

UNIT QUANTITY 3FL	
Name	Quantity

1 BR	6
2 BR	3
3 BR	1
STUDIO	2

Grand total: 12

REFER TO LEVEL 1 FOR THE DIMENSIONS FOR THIS LEVEL

BRIDGEPARK AVENUE

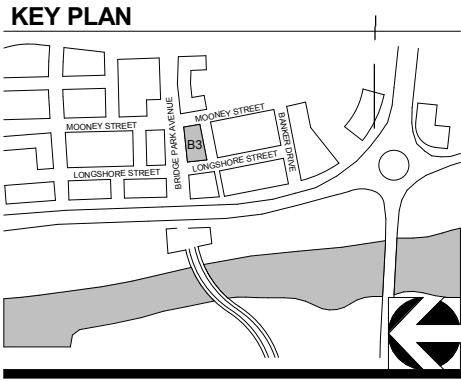
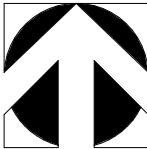
1
B3 - LEVEL 3 (EL. 844.03')

1/16" = 1'-0"

LONGSHORE STREET



MOONEY STREET



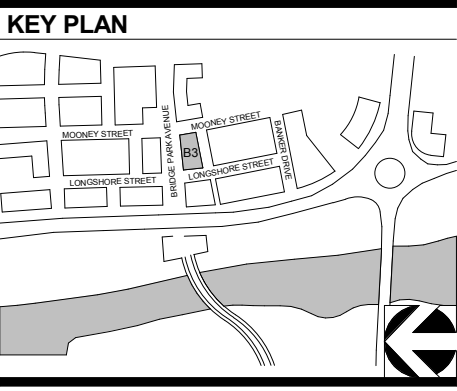
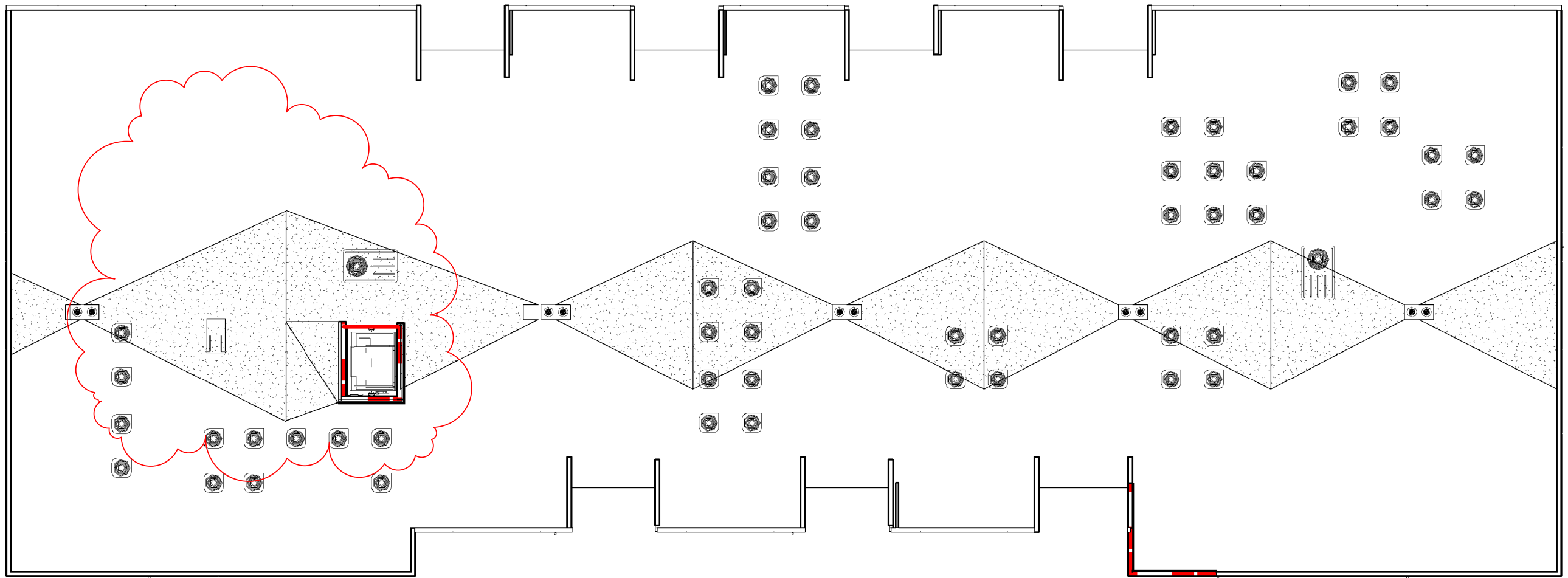
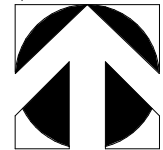
CORRIDOR BUILDING TYPE

06-30-2016

11' X 17" = 1/16" = 1'-0", 22' X 34" = 1/8" = 1'-0"

1

ROOF PLAN (EL. 881.86')
1/16" = 1'-0"



CORRIDOR BUILDING TYPE

11' X 17" = 1/16" = 1'-0", 22" X 34" = 1/8" = 1'-0"

06-30-2016

STREET FACADE
TRANSPARENCY

1st Story	2nd Story	3rd Story	4th Story	5th Story
Story Area: 1,308 sf	Story Area: 3,365 sf	Story Area: 3,365 sf	Story Area: 3,365 sf	Story Area: 3,385 sf
Transparency: 839 sf	Transparency: 1,124 sf	Transparency: 1,124 sf	Transparency: 1,124 sf	Transparency: 1,124 sf
Required: 60%	Required: 30%	Required: 30%	Required: 30%	Required: 30%
Provided: 64%	Provided: 33%	Provided: 33%	Provided: 33%	Provided: 33%

VERTICAL FACADE DIVISIONS
(45' OR LESS REQUIRED)

RESIDENTIAL WINDOW
MODIFICATION - AFTER

Balcony side walls and doors included in story area for transparency and material calculations

TOP OF PARAPET
175'-6 1/2"
(883'-4 3/8")

Story Height
(See Typ. Notes)

ROOF DECK
172'-10"

LEVEL 5
160'-0"
(869'-0 3/8")

LEVEL 4
147'-4"
(856'-4 3/8")

LEVEL 3
134'-8"
(844'-0 3/8")

LEVEL 2
122'-0"
(831'-8 3/8")

LEVEL 1.4
107'-0"
(816'-0 3/8")

LEVEL 1.3
104'-7 5/8"
(814'-4")

LEVEL 1.2
103'-3 5/8"
(813'-0")

LEVEL 1.1
100'-0"
(809'-8 3/8")

LEVEL 1
98'-3 5/8"
(808'-0")

FACADE MATERIALS

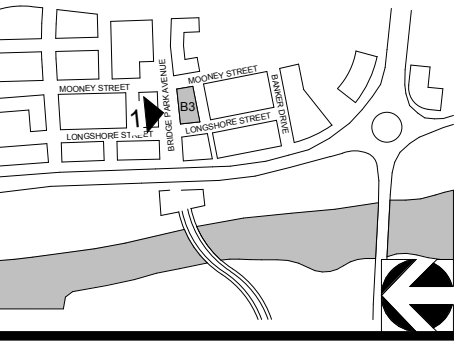
Overall Area of North Elevation: 18,683 sf
Area of Windows/Doors: - 5,189 sf
Net Area of Elevation: 13,494 sf

Material	Primary/Secondary	Area (SF)	Percentage	Required	Met?
Brick	Primary	6,029 sf	45%		
Glass	Primary	1,544 sf	11%		
		7,573 sf	56%	80%	N
Fiber Cement	Secondary	5,586 sf	42%		
Misc. Elements	Trim	335 sf	2%		
		5,921 sf	44%	<20%	N

HORIZONTAL FACADE DIVISIONS

(Required within 3' of top of ground story on buildings 3 stories and taller)

KEY PLAN



1

B3- NORTH ELEVATION

1/16" = 1'-0"

CORRIDOR BUILDING TYPE

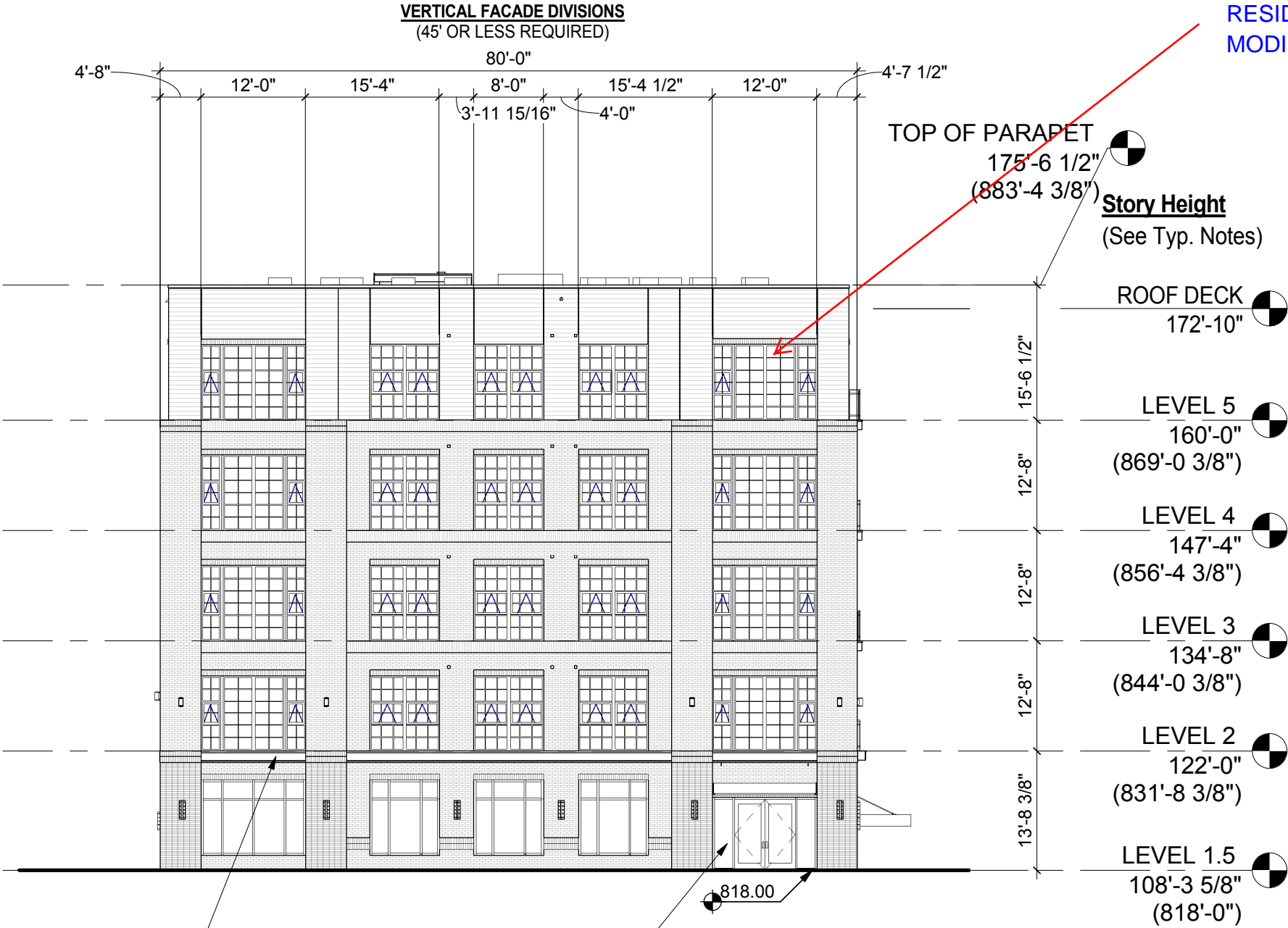
11' X 17" = 1/16" = 1'-0", 22" X 34" = 1/8" = 1'-0"

WAIVER NEEDED: SECONDARY MATERIALS = 24%

06-30-2016

STREET FACADE
TRANSPARENCY

5th Story	
Story Area:	1,003 sf
Transparency:	415 sf
Required:	30%
Provided:	41%
4th Story	
Story Area:	1,044 sf
Transparency:	415 sf
Required:	30%
Provided:	40%
3rd Story	
Story Area:	1,044 sf
Transparency:	415 sf
Required:	30%
Provided:	40%
2nd Story	
Story Area:	1,044 sf
Transparency:	415 sf
Required:	30%
Provided:	40%
1st Story	
Story Area:	480 sf
Transparency:	288 sf
Required:	60%
Provided:	60%



HORIZONTAL FACADE DIVISIONS

(Required within 3' of top of ground story on buildings 3 stories and taller)

PRINCIPAL ENTRANCE LOCATION

(As applicable along any principal frontage street)

FACADE MATERIALS

Overall Area of East Elevation:	5,486 sf
Area of Windows/Doors:	-1,662 sf
Net Area of Elevation:	3,824 sf

Material	Primary/Secondary	Area (SF)	Percentage	Required	Met?
Brick	Primary	2,468 sf	65%		
Glass	Primary	481 sf	13%		
		2,949 sf	78%	80%	N
Fiber Cement	Secondary	800 sf	21%		
Misc. Elements	Trim	75 sf	1%		
		875 sf	22%	<20%	N

1 B3- EAST ELEVATION

1/16" = 1'-0"

CORRIDOR BUILDING TYPE

11' X 17" = 1/16" = 1'-0", 22" X 34" = 1/8" = 1'-0"

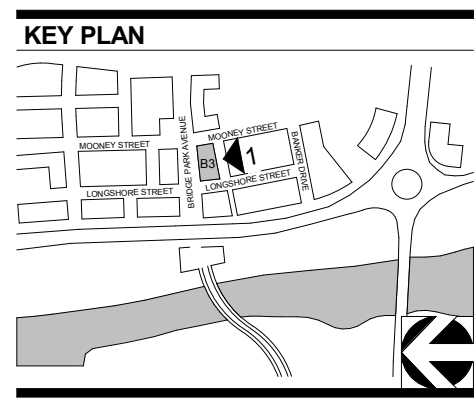
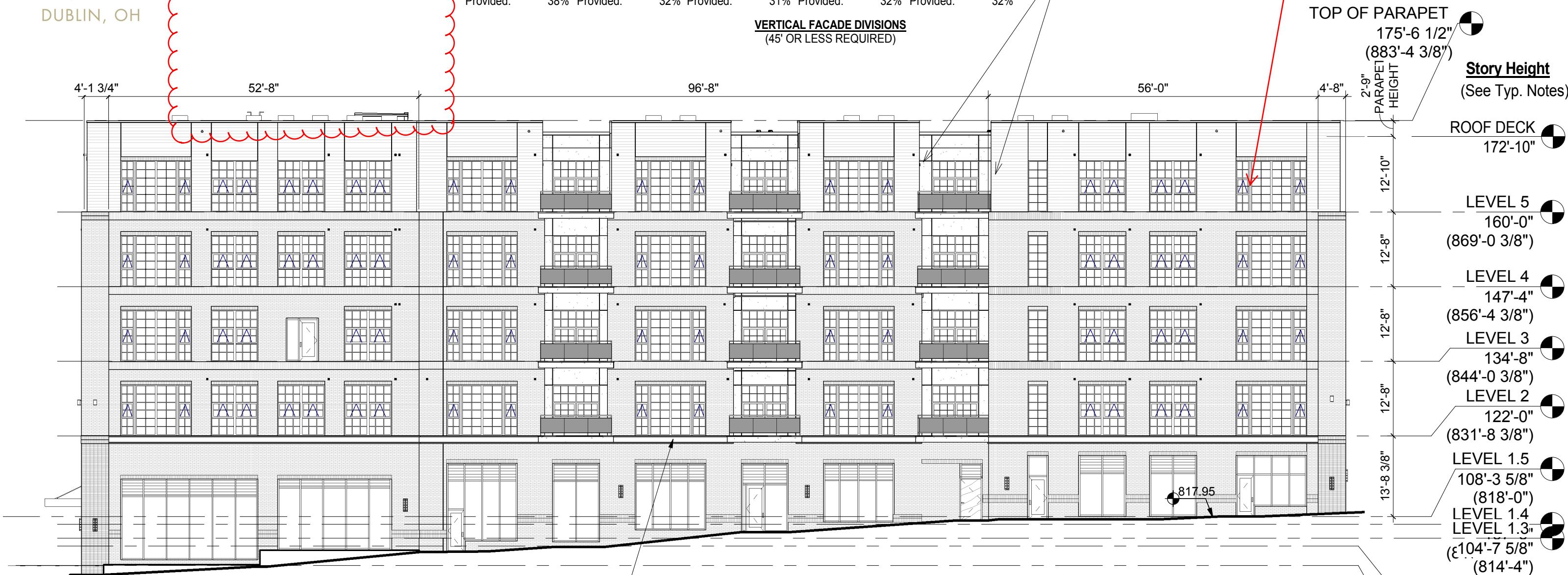
06-30-2016

NON-STREET FACADE
TRANSPARENCY

1st Story	2nd Story	3rd Story	4th Story	5th Story
Story Area: 4,137 sf	Story Area: 3,203 sf	Story Area: 3,203 sf	Story Area: 3,203 sf	Story Area: 3,221 sf
Transparency: 1,592 sf	Transparency: 1,035 sf	Transparency: 1,012 sf	Transparency: 1,035 sf	Transparency: 1,035 sf
Required: 15%	Required: 15%	Required: 15%	Required: 15%	Required: 15%
Provided: 38%	Provided: 32%	Provided: 31%	Provided: 32%	Provided: 32%

VERTICAL FACADE DIVISIONS
(45' OR LESS REQUIRED)

RESIDENTIAL WINDOW
MODIFICATION - AFTER



HORIZONTAL FACADE DIVISIONS
(Required within 3' of top of ground story on buildings 3 stories and taller)

1 B3- SOUTH ELEVATION
1/16" = 1'-0"

FACADE MATERIALS
Overall Area of South Elevation: 17,786 sf
Area of Windows/Doors: - 5,709 sf
Net Area of Elevation: 12,077 sf

Material	Primary/Secondary	Area (SF)	Percentage	Required	Met?
Brick	Primary	7,874 sf	60%		
Glass	Primary	1,497 sf	11%		
		9,371 sf	71%	80%	N
Fiber Cement	Secondary	3,501 sf	27%		
Misc. Elements	Trim	232 sf	2%		
		3,733 sf	29%	<20%	N

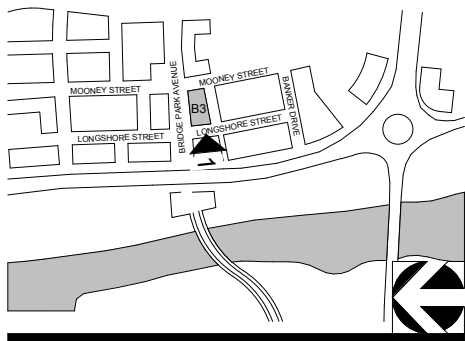
CORRIDOR BUILDING TYPE

11' X 17" = 1/16" = 1'-0", 22" X 34" = 1/8" = 1'-0"

STREET FACADE
TRANSPARENCY

5th Story	
Story Area:	1,003 sf
Transparency:	416 sf
Required:	30%
Provided:	41%
4th Story	
Story Area:	1,044 sf
Transparency:	393 sf
Required:	30%
Provided:	38%
3rd Story	
Story Area:	1,044 sf
Transparency:	387 sf
Required:	30%
Provided:	38%
2nd Story	
Story Area:	1,044 sf
Transparency:	416 sf
Required:	30%
Provided:	39%
1st Story	
Story Area:	480 sf
Transparency:	336 sf
Required:	70%
Provided:	70%

KEY PLAN



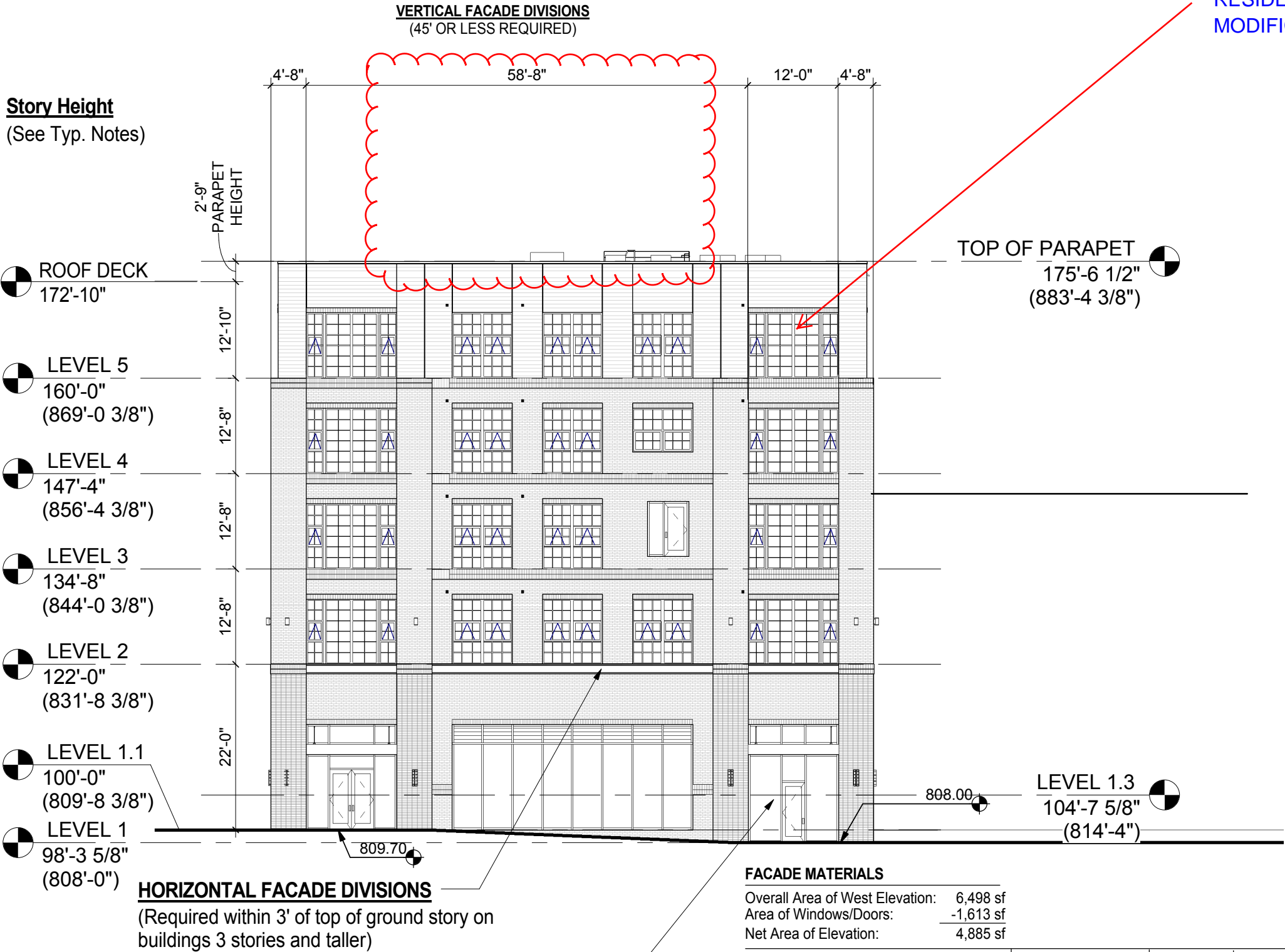
1

B3 - WEST ELEVATION

1/16" = 1'-0"

CORRIDOR BUILDING TYPE

11' X 17" = 1/16" = 1'-0", 22" X 34" = 1/8" = 1'-0"



RESIDENTIAL WINDOW
MODIFICATION - AFTER