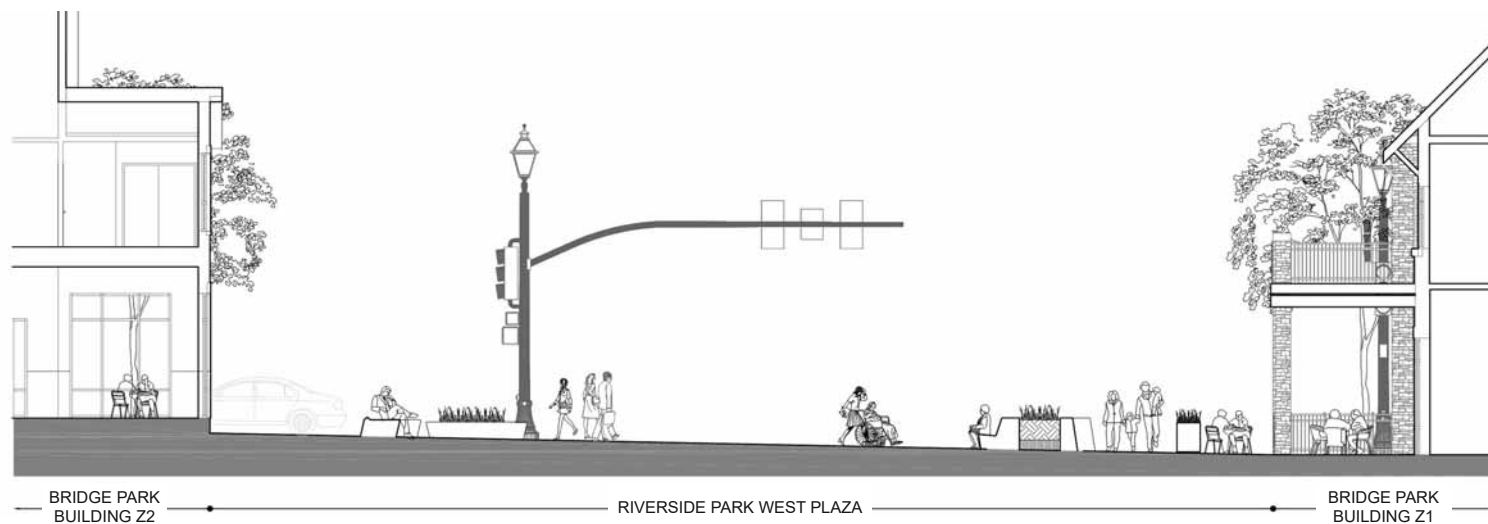




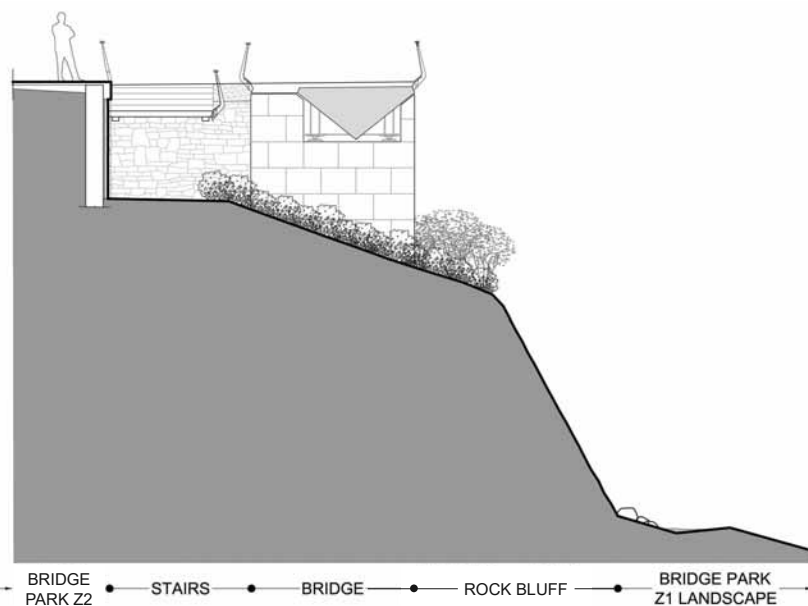
1 | PLAZA SITE SECTION LOOKING SOUTH



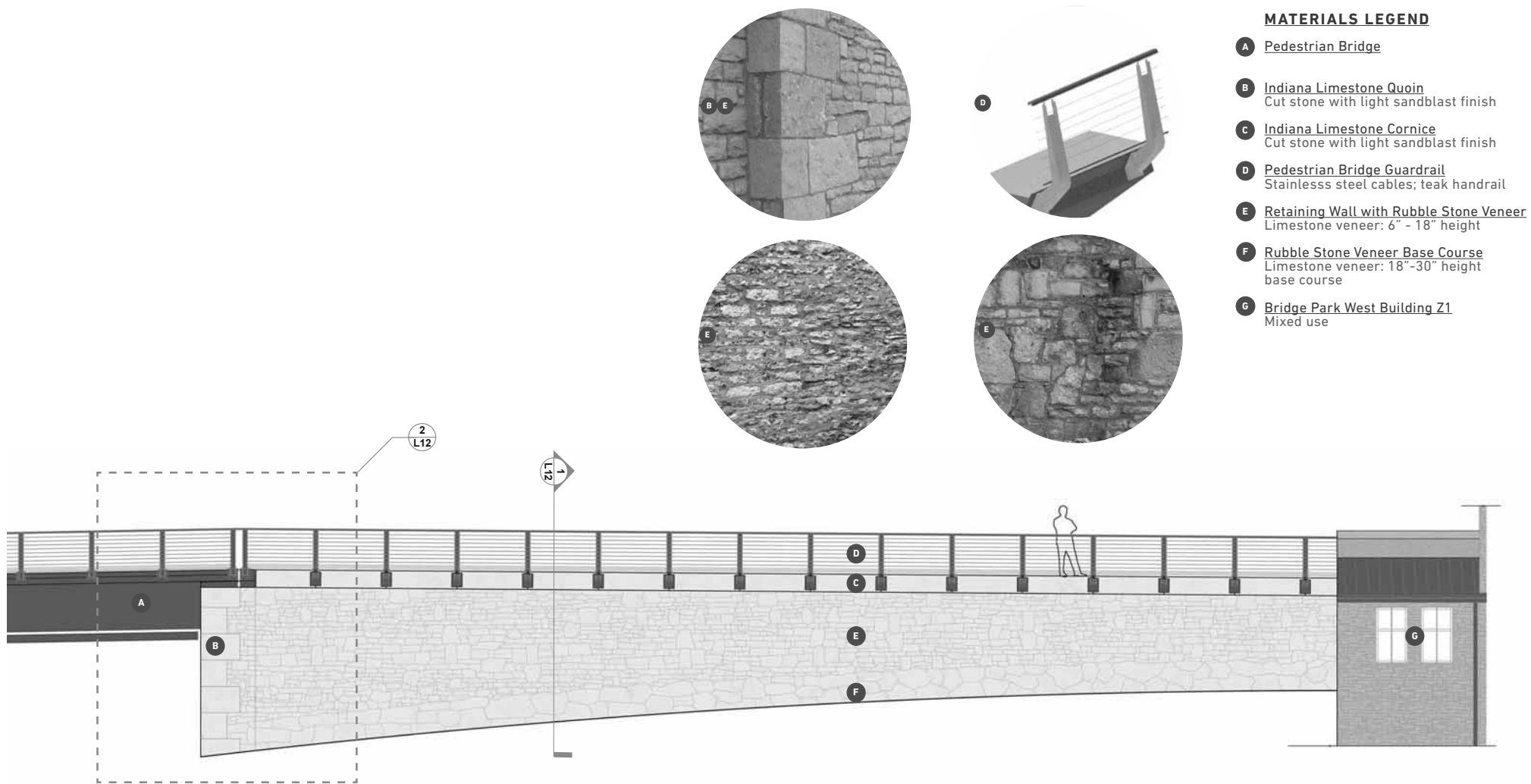
1 | PLAZA SITE SECTION LOOKING NORTH



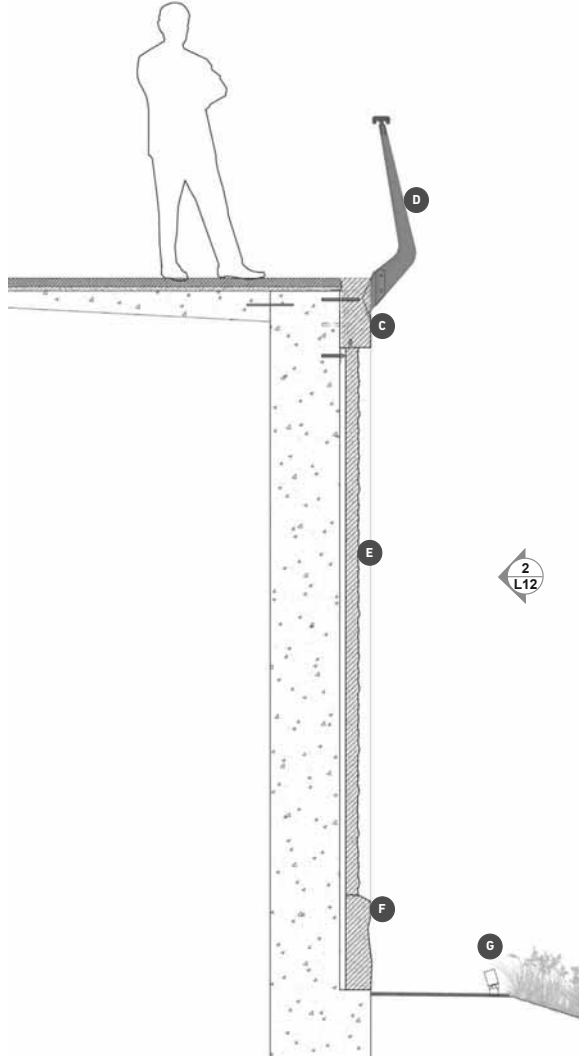
1 | PLAZA TYPICAL CROSS SECTION LOOKING WEST



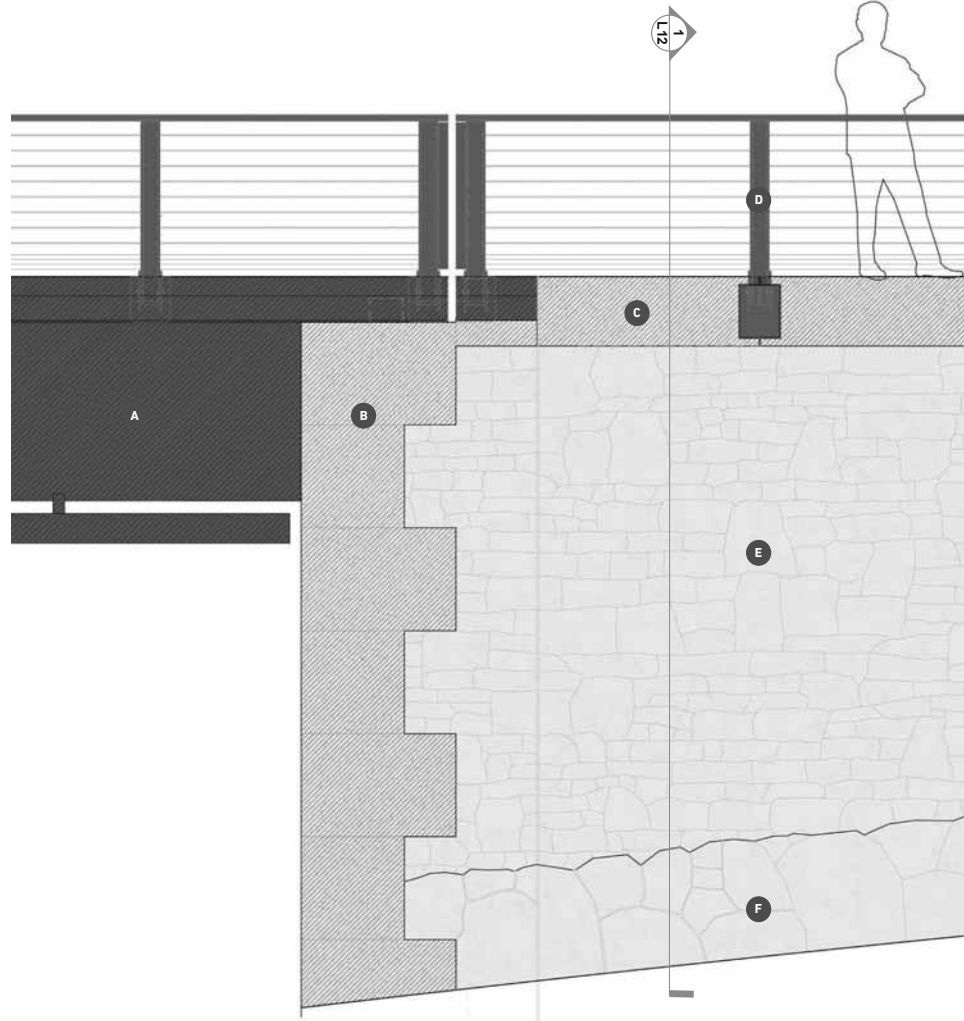
2 | PLAZA SECTION AT STAIRS LOOKING WEST



1 | WALL H1 ELEVATION



1 | WALL H1 TYPICAL SECTION



2 | WALL H1 ELEVATION ENLARGEMENT

MATERIALS LEGEND

- A** Pedestrian Bridge
- B** Indiana Limestone Quoin
Cut stone with light sandblast finish
- C** Indiana Limestone Cornice
Cut stone with light sandblast finish
- D** Pedestrian Bridge Guardrail
Stainless steel cables; teak handrail
- E** Retaining Wall with Rubble Stone Veneer
Limestone veneer: 6" - 18" height
- F** Rubble Stone Veneer Base Course
Limestone veneer: 18"-30" height
base course
- G** Wall Uplight
Linear LED with warm color temperature