

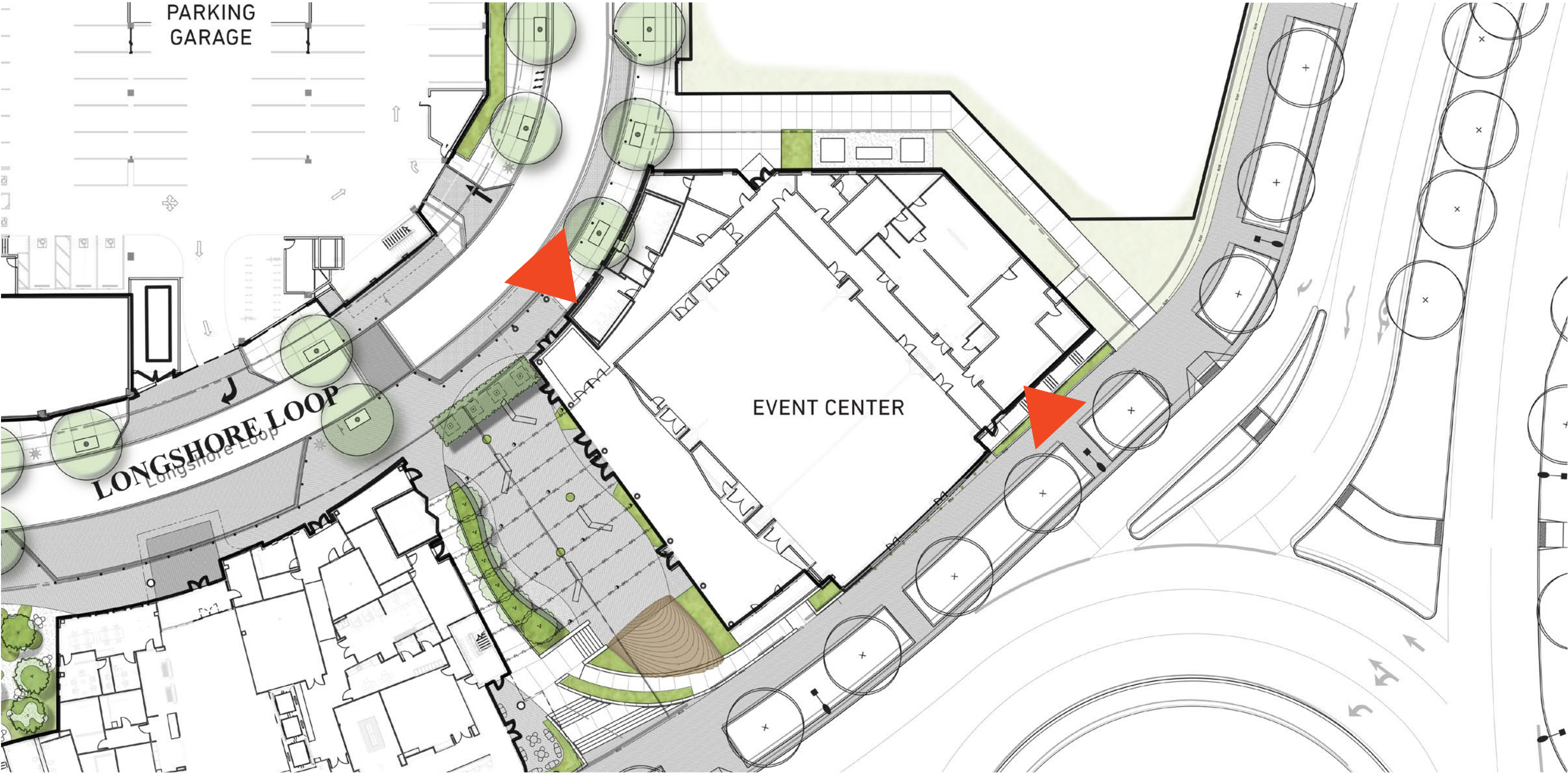


BRIDGE PARK

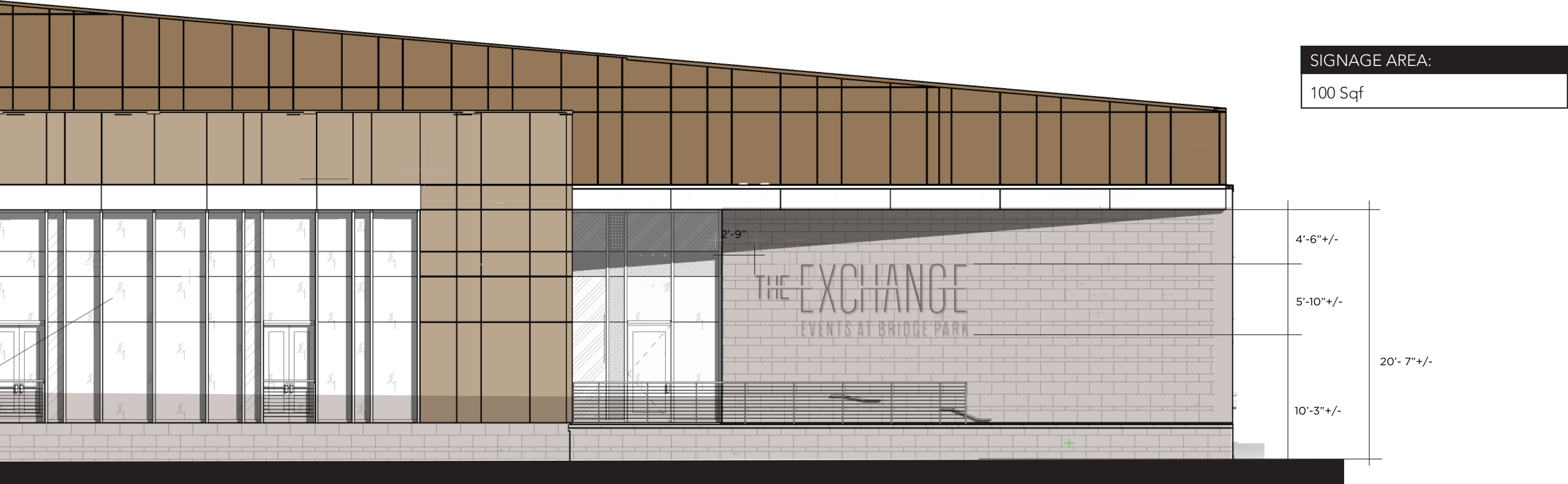
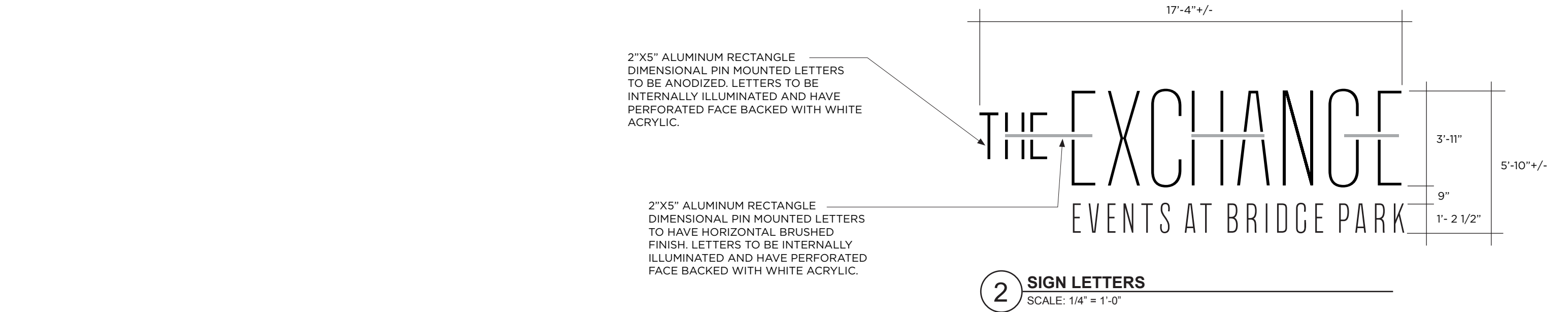
DUBLIN, OH

BLOCK A EXCHANGE EVENT CENTER EXTERIOR SIGNAGE
05.01.17

EVENT CENTER BUILDING ID LOCATIONS

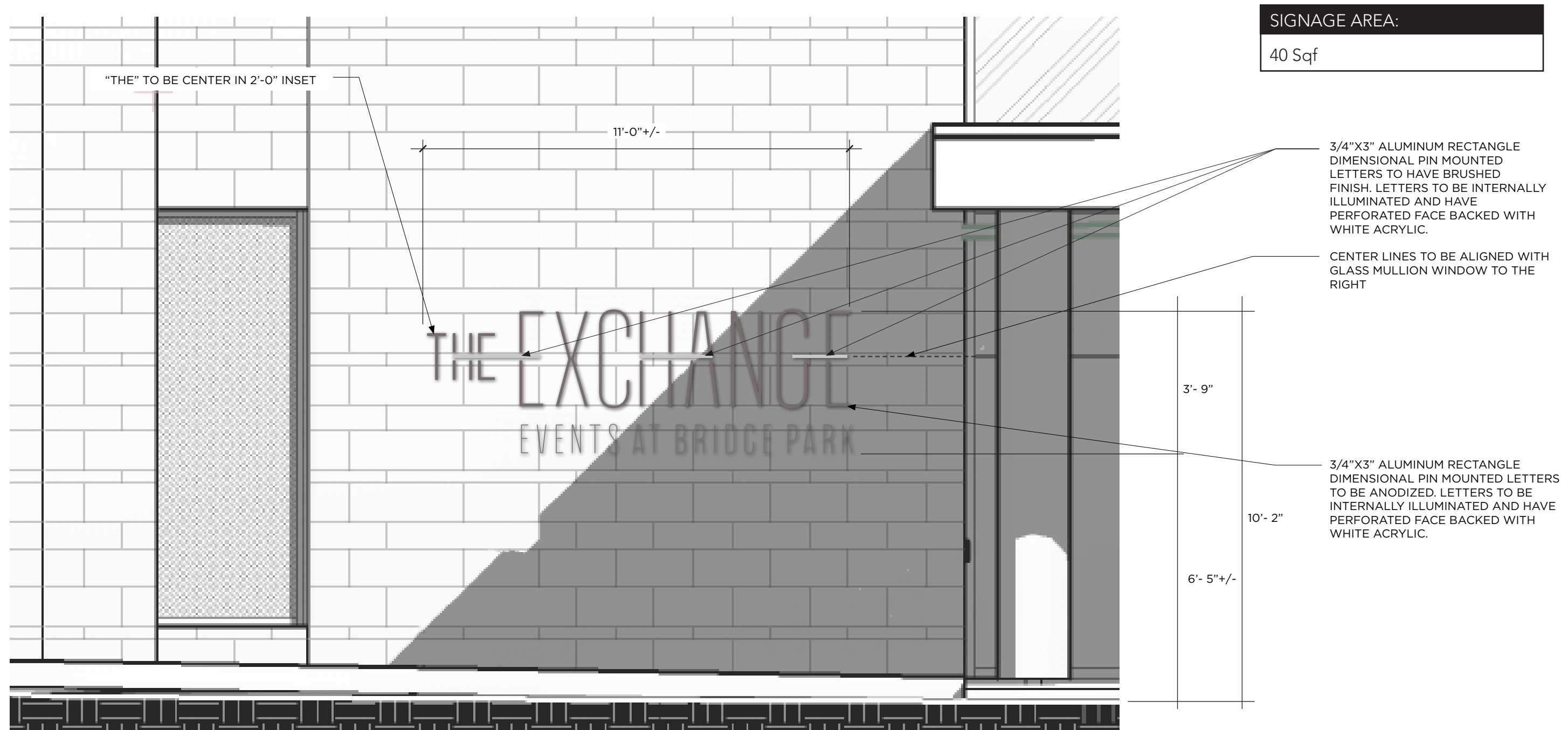


APPROVED WEST FACING EXCHANGE BUILDING ID



1 WEST ELEVATION
SCALE: 1/8" = 1'-0"

APPROVED EAST FACING EXCHANGE BUILDING ID



SIGNAGE AREA:
40 Sqf

3/4"X3" ALUMINUM RECTANGLE
DIMENSIONAL PIN MOUNTED
LETTERS TO HAVE BRUSHED
FINISH. LETTERS TO BE INTERNALLY
ILLUMINATED AND HAVE
PERFORATED FACE BACKED WITH
WHITE ACRYLIC.

CENTER LINES TO BE ALIGNED WITH
GLASS MULLION WINDOW TO THE
RIGHT

3/4"x3" ALUMINUM RECTANGLE
DIMENSIONAL PIN MOUNTED LETTERS
TO BE ANODIZED. LETTERS TO BE
INTERNALLY ILLUMINATED AND HAVE
PERFORATED FACE BACKED WITH
WHITE ACRYLIC.

1 EAST ELEVATION

SCALE: $\frac{3}{8}'' = 1'-0''$

PROPOSED WEST FACING EXCHANGE BUILDING ID

SIGNAGE AREA:

103 Sqf



LOGO FRONT VIEW

Scale: 1/2" = 1'-0"

3"+/- WIDE x 5" DEEP ANODIZED ALUMINUM DIMENSIONAL PIN MOUNTED LETTERS TO BE PAINTED TO MATCH DRIFTWOOD MICA COOL PVDF-2 / GLOSS LEVEL-20. LETTERS TO BE INTERNALLY ILLUMINATED AND HAVE PERFORATED FACE BACKED WITH WHITE ACRYLIC. CLEAR COAT FINISH.

1 1/4"+/- WIDE x 2" DEEP ANODIZED ALUMINUM DIMENSIONAL PIN MOUNTED LETTERS TO BE PAINTED TO MATCH DRIFTWOOD MICA COOL PVDF-2 / GLOSS LEVEL-20. CLEAR COAT FINISH.



WEST ELEVATION

Scale: 1/8" = 1'-0"

WEST FACING EXCHANGE BUILDING ID



PROPOSED EAST FACING EXCHANGE BUILDING ID

SIGNAGE AREA:

41 Sqf

1 3/4"+/- WIDE x 3" DEEP ALUMINUM DIMENSIONAL PIN MOUNTED LETTERS TO BE PAINTED TO MATCH DRIFTWOOD MICA COOL PVDF-2 / GLOSS LEVEL-20. LETTERS TO BE INTERNALLY ILLUMINATED AND HAVE PERFORATED FACE BACKED WITH WHITE ACRYLIC. CLEAR COAT FINISH.

3/4"+/- WIDE x 1" DEEP ALUMINUM DIMENSIONAL PIN MOUNTED LETTERS TO BE PAINTED TO MATCH DRIFTWOOD MICA COOL PVDF-2 / GLOSS LEVEL-20. CLEAR COAT FINISH.



EAST ELEVATION

Scale: 3/8"= 1'-0"

NOTE: VECTOR ARTWORK TO BE PROVIDED BY ARCHITECT