

TENANT A - 94 N. HIGH ST.
TENANT B - 98 N. HIGH ST.
TENANT C - 104 N. HIGH ST.
TENANT D - 108 N. HIGH ST.

THE AVENUE
STEAK TAVERN

TENANT A

TENANT

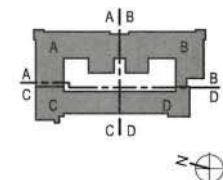
TENANT

TENANT

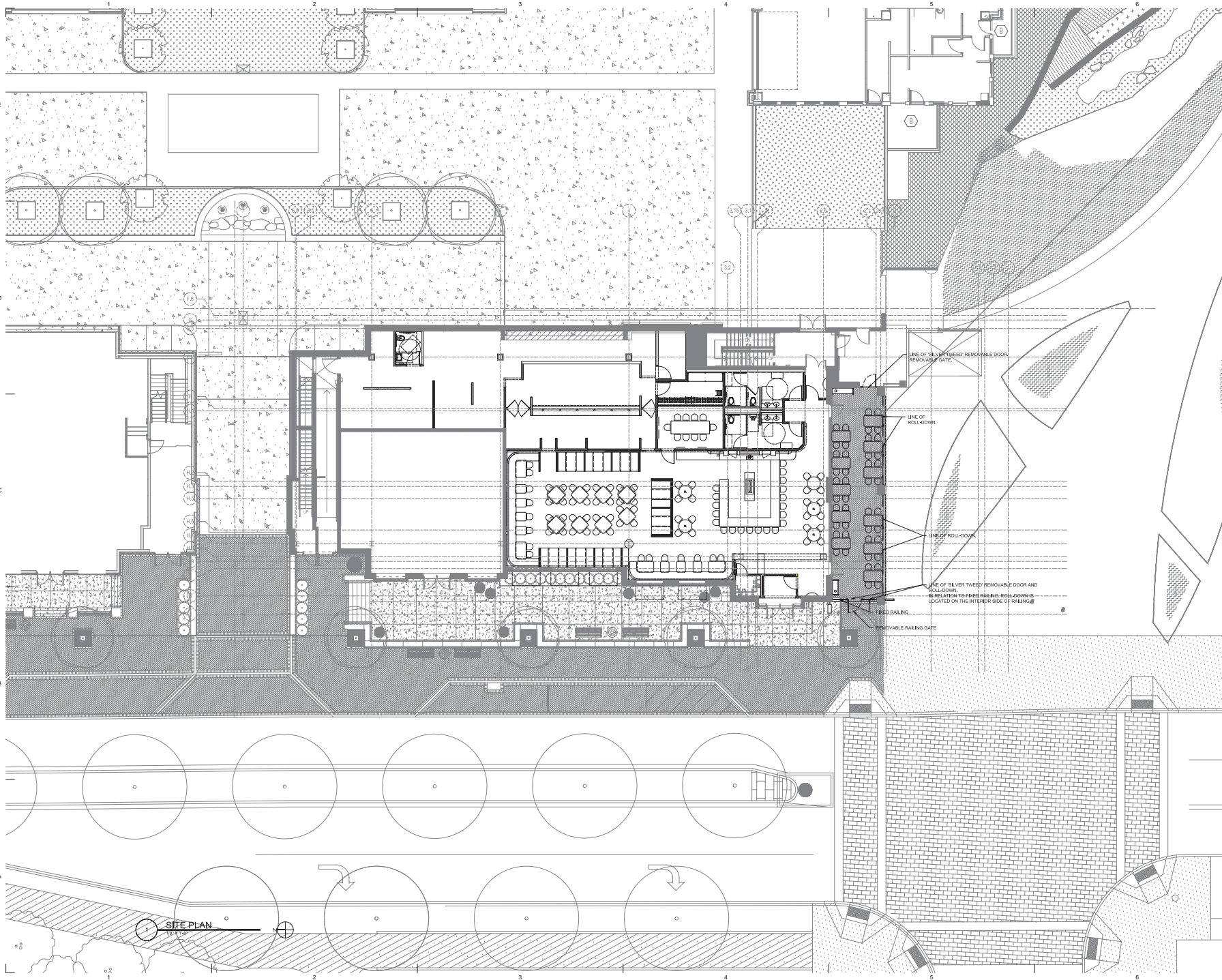
[illegible]

Overall Site Plan

KEY PLAN



A-100



KNAUER

Knauser Incorporated
720 Waukegan Road, Suite 200
Orem, UT 84057
(801) 225-5500
(801) 225-5501 fax
www.knauserinc.com

BEAN

BEAN ARCHITECTS
1000 W. 1000 S.
SUITE 200
OREM, UT 84057
(801) 225-5500
(801) 225-5501 fax

GENERAL SIGNAGE NOTE:
SIGNAGE AND AWINGS ARE SHOWN HEREIN
UNDERSTANDS THAT THESE ITEMS MUST
COMPLY WITH THE APPROVED MASTER SIGN
PLAN AND BE PERMITTED ACCORDINGLY.

06/23/17	AKS SUBMIT
06/23/17	REVISION FOR BID
06/23/17	REVISION FOR PERMIT
03/15/17	REVISION FOR PERMIT
11/15/16	REVISION FOR BID
DATE	DESCRIPTION

**DUBLIN
STEAKHOUSE**

94 NORTH HIGH STREET
DUBLIN, OH 43017

PROJECT NO.	3508
CAD DWG FILE	170117.dwg
DATE	06/23/17
DESIGNED BY	AKS
CHECKED BY	AKS
COPYRIGHT	© 2017 KNAUSER INCORPORATED. ALL RIGHTS RESERVED. NO PART OF THIS DOCUMENT MAY BE REPRODUCED OR TRANSMITTED IN ANY FORM OR BY ANY MEANS, ELECTRONIC OR MECHANICAL, WITHOUT PERMISSION IN WRITING FROM KNAUSER INCORPORATED.

**ARCHITECTURAL
SITE PLAN**

ASP-101



GENERAL SIGNAGE NOTE:
SIGNAGE AND AWNINGS ARE SHOWN HEREIN

UNDERSTANDS THAT THESE ITEMS MUST
COMPLY WITH THE APPROVED MASTER SIGN
PLAN AND BE PERMITTED ACCORDINGLY.

	06/23/17	APP SUBMISSION
	06/29/17	RE ISSUED FOR BID
△	06/01/17	RE ISSUED FOR PERMIT
	03/12/17	ISSUED FOR PERMIT
	11/15/16	RE ISSUED FOR BID
MARK	DATE	DESCRIPTION

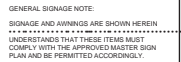
94 NORTH HIGH STREET
DUBLIN, OH 43017

PROJECT NO.	3296
CAD DWG FILE	C:\P01\03296\03296.DWG
DRAWN BY	•
CHECK BY	•

CONSENT OF KNOWER (REQUIRED)
SHEET TITLE
**EXTERIOR
ELEVATIONS**

A-201





DUBLIN
STEAKHOUSE

94 NORTH HIGH STREET
DUBLIN, OH 43017

©1977 KOKLER INCORPORATED
ALL DRAWINGS AND WRITTEN MATERIAL APPEARING HEREIN
CONSTITUTE THE ORIGINAL AND UNPUBLISHED WORK OF
KOKLER INCORPORATED AND THE SAME MAY NOT BE
DUPLICATED, USED, OR DISCLOSED WITHOUT THE WRITTEN

EXTERIOR WALL

SECTIONS

A-302

3/4" = 1'-0"

LD4A-13-D010TE-ERM4A13-8-27 / 4LM1-H-WF

DESCRIPTION

4 inch LED recessed medium beam downlight with 50° cut off specially designed for LED technology. Two-stage reflector system produces smooth distribution with excellent light control and low aperture brightness. Lumen packages include 900, 1300, 1800 and 2800 lumens with color temperatures of 2700K, 3000K, 3500K, 4000K.

PORTFOLIO™

Catalog #	Type
Project	
Comments	
Prepared by	Date

SPECIFICATION FEATURES

Lower Shielding Reflector
Self-flanged, spun .050" thick aluminum lower reflector in combination with a lensed upper optical chamber provides superior lumen output with minimal source brightness. Available in all Portfolio Alzak® finishes.

conduit runs. Listed for (8) #12 AWG (four in, four out) 90°C conductors and feed thru branch wiring.

Thermal
Extruded aluminum heat sink conducts heat away from the LED module for optimal performance and long life.

Trim Retention
Lower reflector is retained with two torsion springs holding the flange tightly to the finished ceiling surface.

Plaster Frame / Collar
New Construction Housing: Die cast aluminum 1-1/2" deep collar accommodates ceiling materials up to 2".

Universal Mounting Bracket
Accepts 1/2" EMT, C channel and bar hangers and adjusts 5" vertically from above and below the ceiling.

Junction Box
(4) 1/2" and (2) 3/4" trade size pry outs positioned to allow straight

Driver
Combination 120-277V 0-10V or 120V trailing edge phase cut driver provides flicker free dimming from 100% to 10%. Optional 1% 0-10V, Fifth Light, DMX or Lutron® Ecosystem. Driver can be serviced from above or through the aperture.

Code Compliance
Thermally protected and cULus listed for protected wet locations. IP66 rated when used with IP66 gasket kit accessory. Optional City of Chicago environmental air (CCEA) marking for plenum applications. EMI/RFI emissions per FCC 47CFR Part 18 Class B consumer limits. Non-IC rated -

Insulation must be kept 3" from top and sides of housing. RoHS Compliant. Photometric testing completed in accordance with IES LM 79 standards. LED life testing completed in accordance with LM 80 standards.

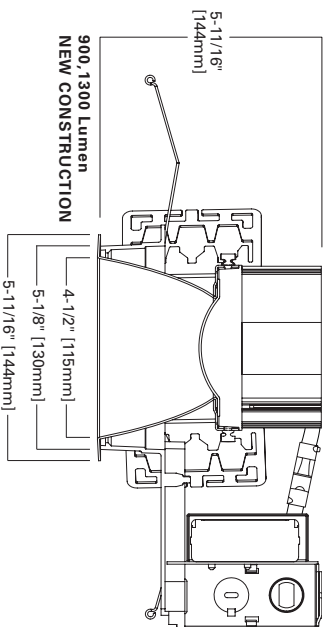
Warranty
5 year warranty.



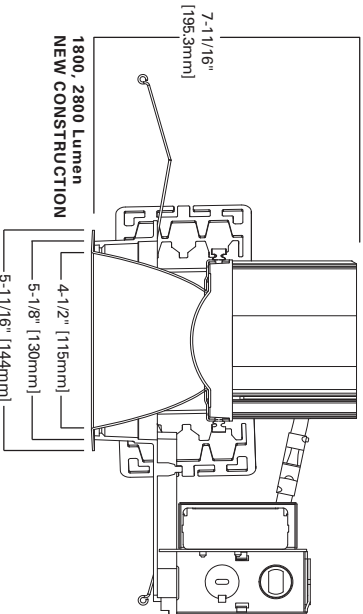
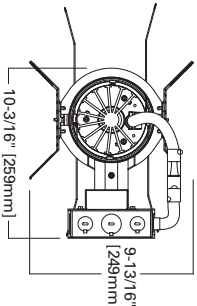
LD4A09 LD4A13
LD4A18 LD4A28
4LM

900, 1300 Lumen LED
1800, 2800 Lumen LED

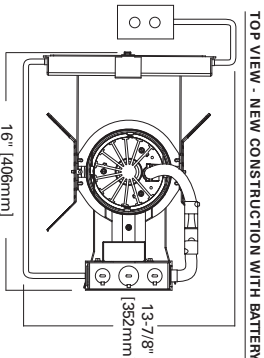
4-inch
Medium Beam Downlight
New Construction



TOP VIEW - NEW CONSTRUCTION



Note: Max Opening 4-3/8" [111mm]



Cooper Lighting

by E.T.N

Specifications and dimensions subject to change without notice.

Consult your representative for additional options and finishes.

GWEN CROSSMAN LIGHTING DESIGN

OCEAN PRIME - BOSTON



Refer to ENERGY STAR® Qualified Products List. Can be used to comply with California Title 24 High Efficiency requirements. Certified to California Title 20 Appliance Efficiency Database.



ADP110786
2014-10-21 14:10:55

ORDERING INFORMATION

EXAMPLE: LD4A13D010TE ERM4A13835 4LM0LI=4" LED Medium Beam Reflector Lens, 1300 lumen, 3,500 K Color with Universal 120 - 277V, 0 - 10 Driver

Housing	Lumens¹	Driver	Options	Power Module	CRI	Color
LD4A=4" Aperture LD4ACP=4" Aperture, Chicago Plenum	09=900 Lumens 13=1300 Lumens 18=1800 Lumens 28=2800 Lumens	900, 1300, 1800 and 2800 Lumen D010TE=120-277V 0-10V 10% Dimming or Trailing Edge 120V Dimming DSLT=5th Light* (DALI) Dimming 1-100% DE010=1 to 100% Dimming, 120-277V 50/60Hz, 0-10V DL3=1 to 100% Dimming, 120-277V Lutron® Hi-Lume, Ecosystem or 3 Wire DLT=1 to 100% Dimming, 120V Lutron® Hi-Lume Forward Phase Dimming DMX=DMX Dimming 1-100%	EMBOB=Bodyne® Emergency Module with Remote Test Switch³ IEMBOB=Bodyne® Emergency Module with Integral Test Switch¹	ERMAA09=4", 900 Lumen Module for Medium Beam Reflector ERMAA13=4", 1300 Lumen Module for Medium Beam Reflector ERMAA18=4", 1800 Lumen Module for Medium Beam Reflector ERMAA28=4", 2800 Lumen Module for Medium Beam Reflector	8=80 CRI 9=90 CRI	27=2700° K 30=3000° K 35=3500° K 40=4000° K 27CP=2700° K, Chicago Plenum 30CP=3000° K, Chicago Plenum 35CP=3500° K, Chicago Plenum 40CP=4000° K, Chicago Plenum
		900, 1300 and 1800 Lumen D010TR=120-277V 0-10V 10% Dimming or Leading Edge 120V Dimming				

Reflector	Finish	Options	Accessories
4LM0=4" Medium Reflector Lens Assembly, White Polymer Trim Ring 4LM1=4" Medium Reflector, Self-flanged 4LM0E=4" Medium Reflector Lens Assembly, White Polymer Trim Ring for Integral Emer- gency Option 4LM1E=4" Medium Reflector Self-flanged for Integral Emer- gency Option	L=Specular Clear H=Semi-Specular Clear WMH=Warm Haze G=Specular Gold WH=Wheat WHH=Wheat Haze GP=Graphite GPH=Graphite Haze	B=Specular Black W=Gloss White 4LM0 Only BB=Black Baffle WB=White Baffle	

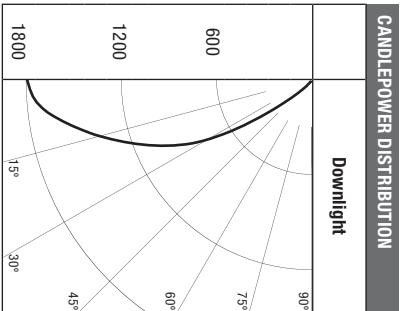
- Notes: 1 Nominal Lumens will vary depending on selected color, driver and reflector finish.
2 Order trim with polymer trim ring (Consult specification sheet for color ordering information and options).
3 Not available with Chicago Plenum.

ENERGY

ENERGY DATA			
Sound Rating: Class A standards			
(Values at non-dimming line voltage)			
Minimum Starting Temperature: -30°C (-22°F)			
EMWIR: FCC Title 47 CFR, Part 15, Class B (Consumer)			
Input Voltage: UNV (120V - 277V)			
Power Factor: >0.90 (at nominal input 120-277 VAC & 100% of Rated Output Power)			
2800 Lumen D010TE		1800 Lumen D010TE	
Input Power: 43.4W	THD: <17%	Input Power: 31.5W	THD: <20%
120V Input Current: 38A	277V Input Current: 16A	120V Input Current: 27A	277V Input Current: 80A
Maximum Non-IC Ambient Continuous		Maximum Non-IC Ambient Continuous	
Input Frequency: 50/60Hz		Input Frequency: 50/60Hz	
1300 Lumen D010TE		900 Lumen D010TE	
Input Power: 22.4W	THD: <20%	Input Power: 14.1W	THD: <20%
120V Input Current: 12A	277V Input Current: 80A	120V Input Current: 12A	277V Input Current: 80A
Maximum Non-IC Ambient Continuous		Maximum Non-IC Ambient Continuous	
Input Frequency: 50/60Hz		Input Frequency: 50/60Hz	

120V		277V	
Lumens	Input (A)	Input (A)	Duration (hrs)
900/1000	0.486	0.486	0.62
1300/1500	0.717	1.58	0.501
1800/2000	0.832	0.405	1.25
2800/3000	1.09	0.3	1.23
			0.294

PHOTOMETRICS



Test Number	P98003
LD4A13D010TE ERM4A13835 4LM1H	
Lumens	1377
Efficacy	61.5 Lm/W
Watts	22.4
CCT	3500K
SC	0.79

CONE OF LIGHT			
Distance Fixture to Lighted Plane	Initial FootCandles at Nadir	Beam Diameter	
5'5"	58	4.2	
7'	36	5.4	
8'	27	6.2	
9'	22	7.0	
10'	17	7.8	
12'	12	9.4	

CANDELA TABLE		
Degrees Vertical	Candela	
0	1780	
5	1719	
15	1371	
25	978	
35	442	
45	100	
55	18	
65	6	
75	2	
85	0	
90	0	

ZONAL LUMEN SUMMARY			
Zone	Lumens	%Fixture	
0-30	984	71.5	
0-40	1264	91.8	
0-60	1369	99.4	
0-90	1377	100	
90-180	0	0	
0-180	1377	100	

LUMINANCE		
Average Candella Degrees	Average 0° Luminance	
45	13755	
55	3126	
65	1407	
75	565	
85	0	

Cooper Lighting

by E.T.O.N

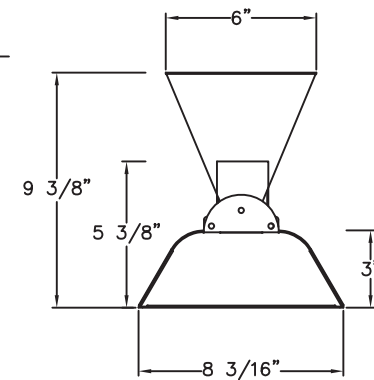
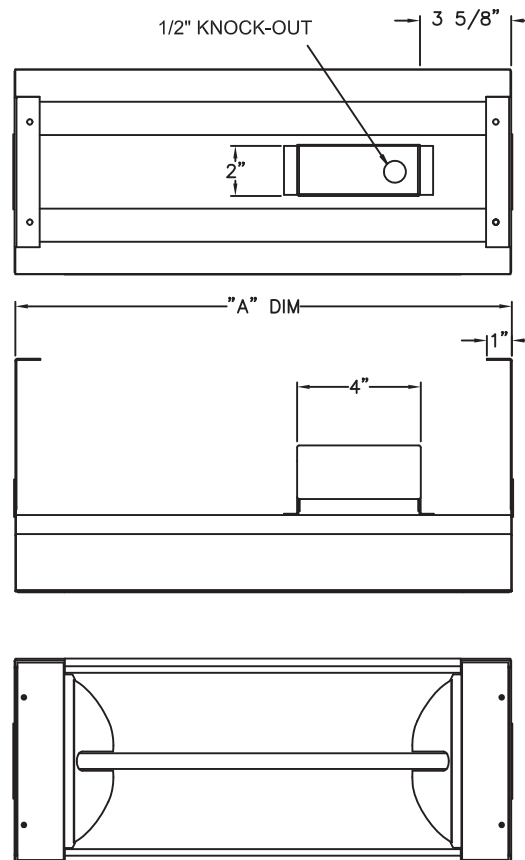
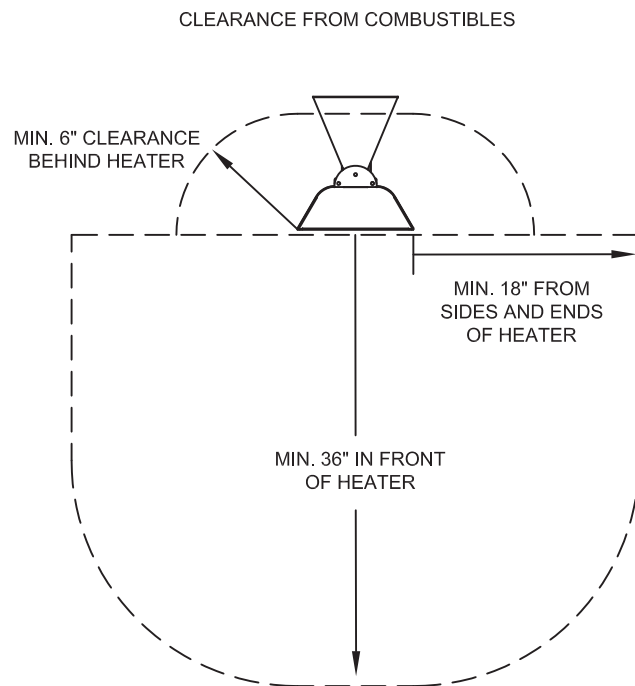
GWEN CROSSMAN LIGHTING DESIGN

Specifications and dimensions subject to change without notice.

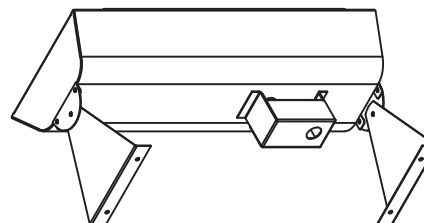
Customer First Center 1121 Highway 74 South Peachtree City, GA 30289 770.486.4800 FAX 770.488.4801

OCEAN PRIME - BOSTON

ADP110786
2014-10-21 14:10:55



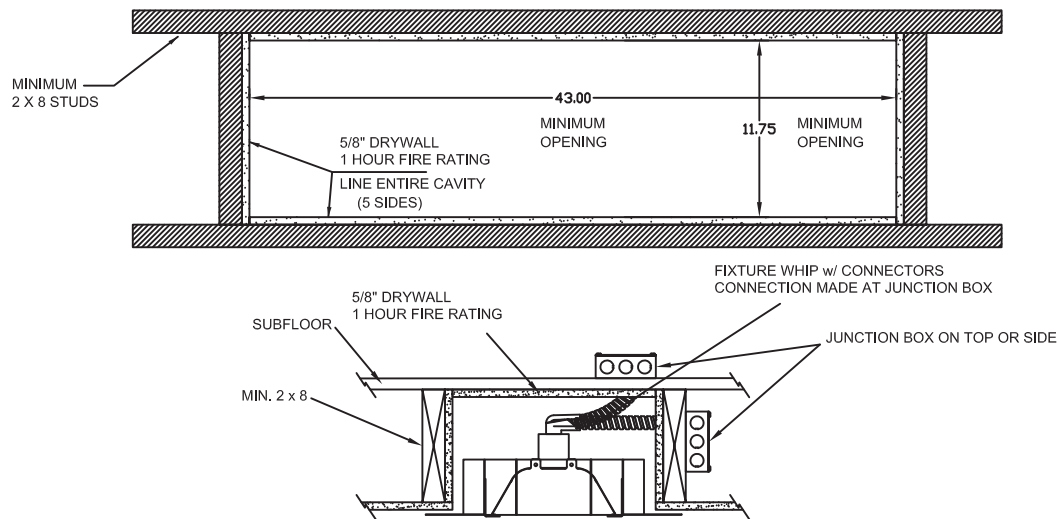
MODEL	"A" DIM.	WATTS	VOLTS	AMPS	BTU's
W512	19"	500	120	4.2	1706
W7512	19"	750	120	6.3	2559
W1012	33"	1000	120	8.3	3412
W1512	33"	1500	120	12.5	5118
W2024	39"	2000	240	8.3	6824
W2524	39"	2500	240	10.4	8530
W3024	61 1/4"	3000	240	12.5	10236
W4024	61 1/4"	4000	240	16.7	13648
WD4024	39"	4000	240	16.7	13648
WD5024	39"	5000	240	20.8	17060
WD6024	61 1/4"	6000	240	25	20472
WD8024	61 1/4"	8000	240	33.4	27296



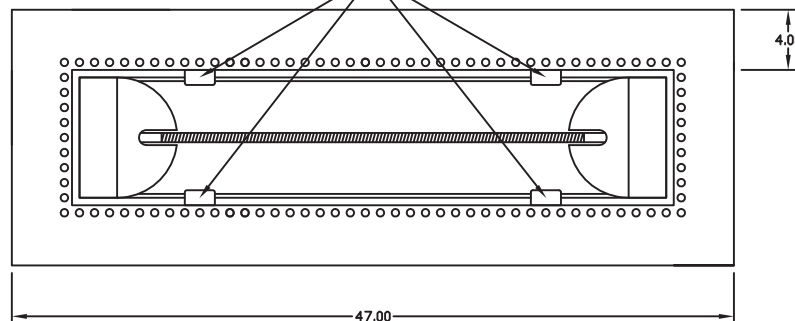
OTHER VOLTAGES ALSO AVAILABLE: 208, 277, 480

XF2

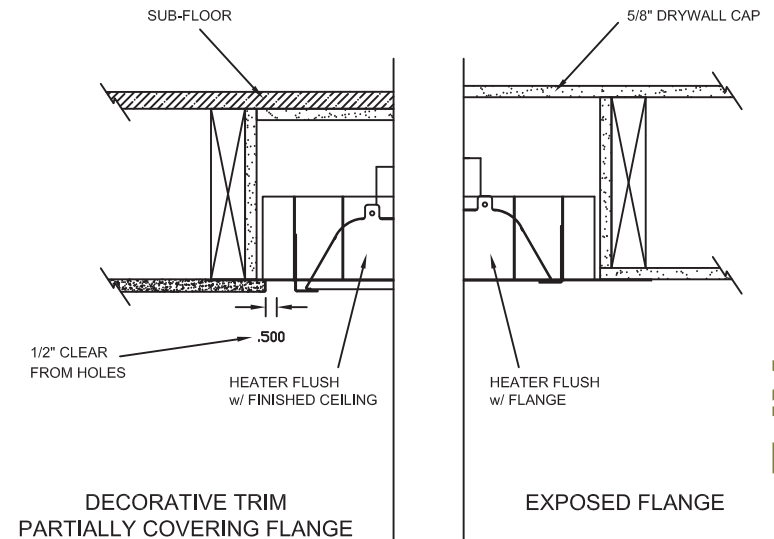
INFRATECH www.infratech-usa.com		15700 S. Figueroa St. Gardena, California 90248 Phone: (310) 354-1250 Fax: (310) 523-3674	
		DESCRIPTION W-SERIES HEATER CAD DRAWING	
DATE Feb. 3, 2010	DRAWN BY: MD	SCALE NONE	



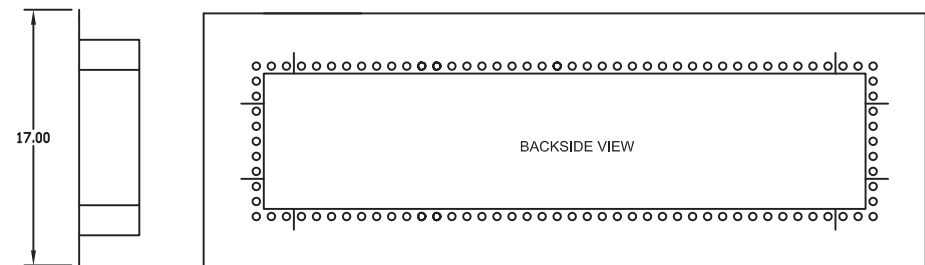
SURFACE VIEW



INSTALLATION TYPES



XF2



WARNINGS:

- This frame is **ONLY** to be used on a flat non-sloped ceiling.
- Heater must face straight down.
- Frame and Heater cannot be installed on a pitched angle.

NOTES:

- Heater suspends (Gravity) by resting on adjustable tabs in flush mount fixture.
- Mounting holes on Surface Flange to be determined and drilled by Contractor/Installer.
- Supplied with Hi-Temp Fixture Whip and Hi-Temp Wire Nuts.
- Coil excess flex into heater cavity.
- Use Licensed Electrician **ONLY**

INFRA^{TECH} www.infratech-usa.com		15700 S. Figueroa St. Gardena, California 90248 Phone: (310) 354-1250 Fax: (310) 523-3674
ITEM #:	X-18-2300	MATERIAL: 304 S.S. #4 FINISH
DESCRIPTION:	W-39 FLUSH MOUNT PLASTER FRAME (FOR USE WITH 39" HEATERS)	
NOTES:	SUPPLIED w/ ELECTRICAL FIXTURE WHIP	
DATE:	July 17, 2015	SCALE: N/A
		DRAWN BY: MD

[Home](#) / [Our Designers](#) / [Ralph Lauren](#) / [Wall\(View All\)](#) / [Bath](#) / Sackett Large Sconce

Sackett Large Sconce

DESIGNER: RALPH LAUREN

\$990.00

ITEM #RL 2157BZ

AVAILABILITY: WITHIN 6 WEEKS

SPECIFICATIONS

Height: 29.5"

Width: 5"

Extension: 4.5"

Backplate: 5.5" Square

Socket: 4 - E26 Keyless

Wattage: 4 - 60 T



SPECIFICATION SHEET



INSTALLATION GUIDE

FINISH/SHADE

QTY

Bronze with Frosted Safety Glass ▼

1

ADD TO CART



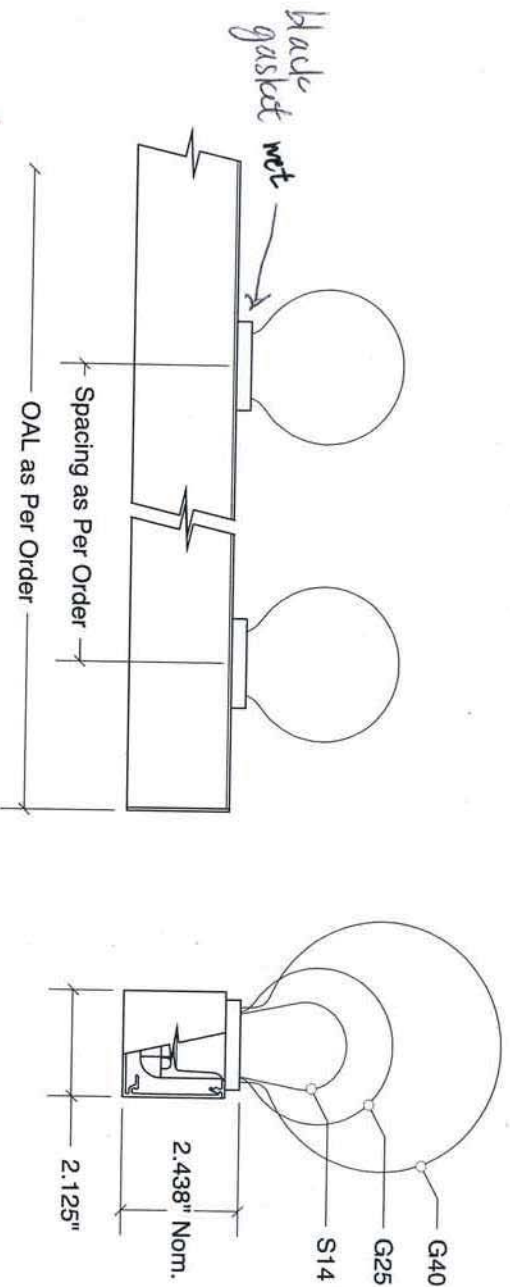
Add To Wishlist



XF3

MQ / MB

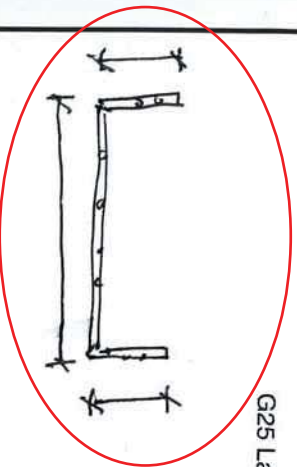
220 / MB - Surface Mount Lamps, Waterproof



Side View
Scale: 1:4

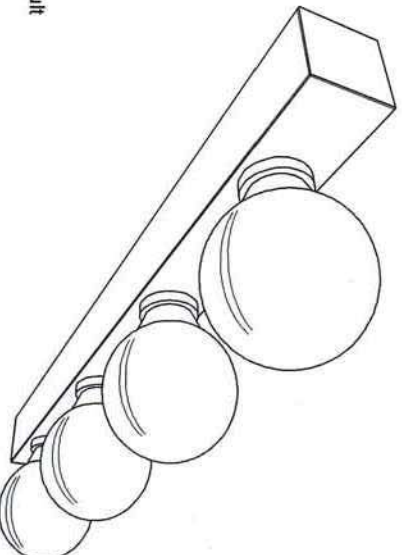
G25 Lamp Shown for Reference

End View
Scale: 1:4



Notes

- 1-Fixture ambient temperature **not to exceed 100°F**
- 2-Available in Satin Aluminum, Polished Chrome, Polished Brass and White or Black semi-gloss painted finishes. Consult factory for alternate finishes.
- 3-Lamps provided by others. Recommended Lamps to be 120 volt incandescent. **Medium base** lamp type and wattage as per order. Warning, risk of fire. Do not exceed maximum recommended wattage.
- 4-Fixtures provided with Ø.875" knockouts for power feed.
- 5-Mitering, mounting and bending options available. Consult factory for details.
- 6-Socket spacing as specified. For custom spacing, consult factory for lamp compatibility.
- 7-For multiple circuit wiring consult factory.



Perspective View
Scale: NTS

can paint in field
or
Custom



Lamp Spacing	
<input type="checkbox"/> 6"	
<input checked="" type="checkbox"/> 12"	
<input type="checkbox"/> Other (Consult Factory)	

Finishes	
<input type="checkbox"/> SA Satin Aluminum	
<input type="checkbox"/> PC Polished Chrome	
<input type="checkbox"/> PB Polished Brass	
<input type="checkbox"/> WH White Paint	
<input checked="" type="checkbox"/> BK Black Paint	
<input type="checkbox"/> Custom (Specify)	

starfire

Starfire Lighting, Inc.
7 Donna Drive, Wood-Ridge, NJ 07075
(201) 438-9540 FAX: (201) 438-9541
Toll Free: (800) 443-8823
E-Mail: info@starfirelighting.com

Date:	Starfire Agent:	Drawing No:
Project:		0464
Specified by:		<i>lead time 6 wks</i>

All designs and scale drawings shall remain the property of STARFIRE LIGHTING, INC., and may not be reproduced or transmitted without the expressed written consent of the manufacturer.
STARFIRE LIGHTING, INC. reserves the right to make changes on approved designs to facilitate manufacturing methods to the extent that such changes do not compromise design integrity.

Outdoor Original

HUNTER ORIGINAL® - 52" CEILING FAN

MODEL 23863

Black

Teak



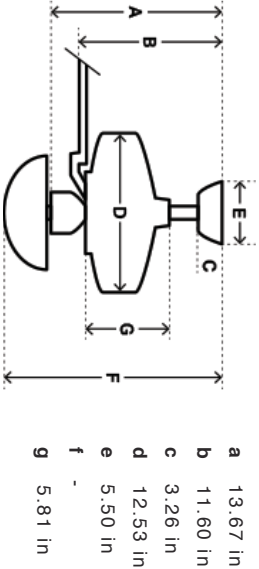
HUNTER ORIGINAL® - 52" CEILING FAN

The one-of-a-kind Hunter Original® has been around for a long time yet it still brings superior performance for years of endurance. This powerful motor features a cast-iron housing and a unique oil bath system that constantly lubricates bearings, virtually eliminating noise and wear. Many patrons have proudly hung their Hunter Originals for decades, and it's never too late for you to join the fun. This product remains a classic that will elevate your home and amaze you with its performance.

- One-of-a-kind Hunter Original® motor promises years of quiet, trouble-free operation. This powerful motor features a cast-iron housing and a unique oil bath lubrication system that constantly lubricates bearings, virtually eliminating noise and wear
 - Original Canopy

Outdoor/Damp rated
- 2.5" downrod included to ensure proper distance from the ceiling and optimize air movement
 - Limited Lifetime Motor Warranty is backed by the only company with over 125 years in the fan business

Dimensions



Energy Information

Airflow
7560 cfm

Electricity Use
85 watts

Airflow Efficiency
89 cfm/watt

Standard dimensions: with 3 inch downrod (included)
Angled dimensions: with 36 inch downrod (not included)

Running at high speed





THE AVENUE





THE AVON

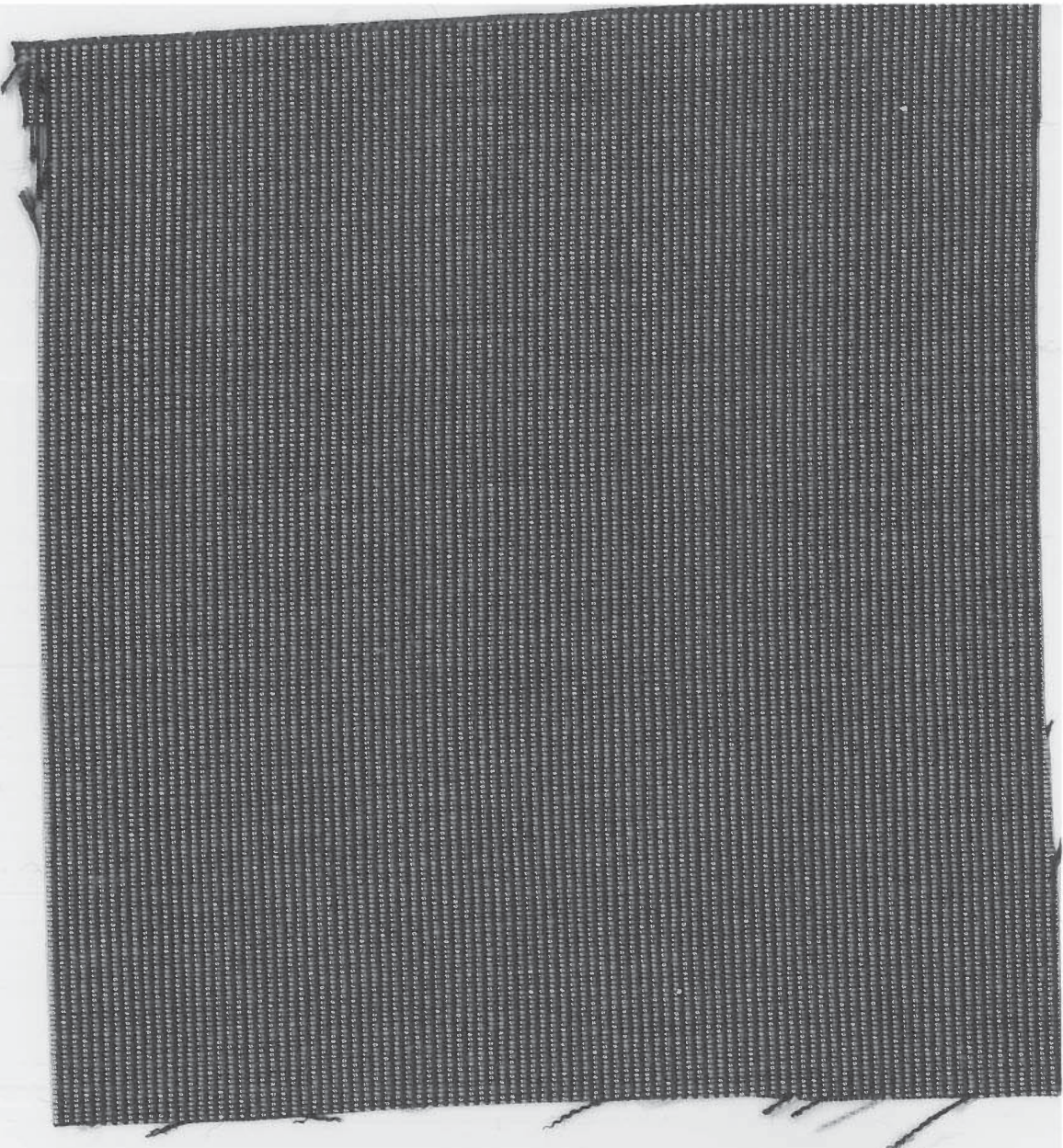


HOURS
Mon-Thurs 4-10
Fri-Sat 4-11
Sunday

SUNBRELLA 4608 'BLACK' w/ WHITE STITCHED PIPING



TEMPOTEST USA - TEMPOTEST MARINE T 40779-60
'SILVER TWEED'



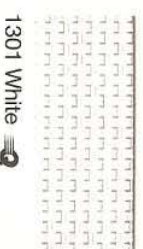
ThermoVeil® Dense Basket Weave Shadecloth 1300 Series

The ThermoVeil® Dense Basket Weave Shadecloth 1300 Series is a technically advanced material woven in a 2x2 basket-weave pattern and available in a wide range of colors.

Content: 75% vinyl, 25% polyester core
Openness factor: approx. 5%
Stocked: 63 in. (160cm), 96 in. (244cm), and 126 in. (320cm) wide
NFPA 701-2004: passed



1313 Grey



1301 White



1316 Eggshell



1317 Straw



1302 Beige



1319 Silver Birch



1320 Shadow Grey



1304 Black/Brown

PROPOSED COLOR

SuperWide

ThermoVeil® Dense Basket Weave Shadecloth 1500 Series

The ThermoVeil® Dense Basket Weave Shadecloth 1500 Series has a 3% openness factor. Its shadecloth colors match the eight colors of the 1300 Series, which is 5% open. Both technically advanced materials are woven in a 2x2 basket-weave pattern. The basket weave provides a uniform scrim effect at the window wall with appropriate densities for sun control.

Content: 75% vinyl, 25% polyester core
Openness factor: 3%
Stocked: 63 in. (160cm), 96 in. (244cm), and 126 in. (320cm) wide
NFPA 701-2004: passed

SuperWide New



1513 Grey



1501 White



1516 Eggshell



1517 Straw



1502 Beige



1519 Silver Birch



1520 Shadow Grey



1504 Black/Brown

ThermoVeil® Open Basket Weave Shadecloth 2100 Series

The ThermoVeil® Open Basket Weave Shadecloth 2100 Series has a more open weave, (10%) than the 1300 and 1500 Series and is available in the same color range as these two series. The 2113 Grey is a representative swatch.

Content: 75% vinyl, 25% polyester core
Openness factor: approx. 10%
Stocked: 63 in. (160cm) and 96 in. (244cm) wide
NFPA 701-2004: passed

2113 Grey

2101 White

2116 Eggshell

2117 Straw

2102 Beige

2119 Silver Birch

2120 Shadow Grey

2104 Black/Brown



2113 Grey

To request 4 x 4 in. (10 x 10cm), 8 x 10 in. (20 x 25cm), or 24 x 24 in. (61 x 61cm) samples, send an e-mail to: samples@mechoshade.com.

Other widths may be available on special order. Minimums and lead times apply.

Available for QuickShip™

MechoShade Systems, Inc.
42-03 35th Street, Long Island City, NY 11101
T: +1 (718) 729-2020
F: +1 (718) 729-2941/+1(800) 899-8081
marketing@mechoshade.com
MechoShadeSystems.com

MechoShade Systems
The Architect's Choice

ThermoVeil®