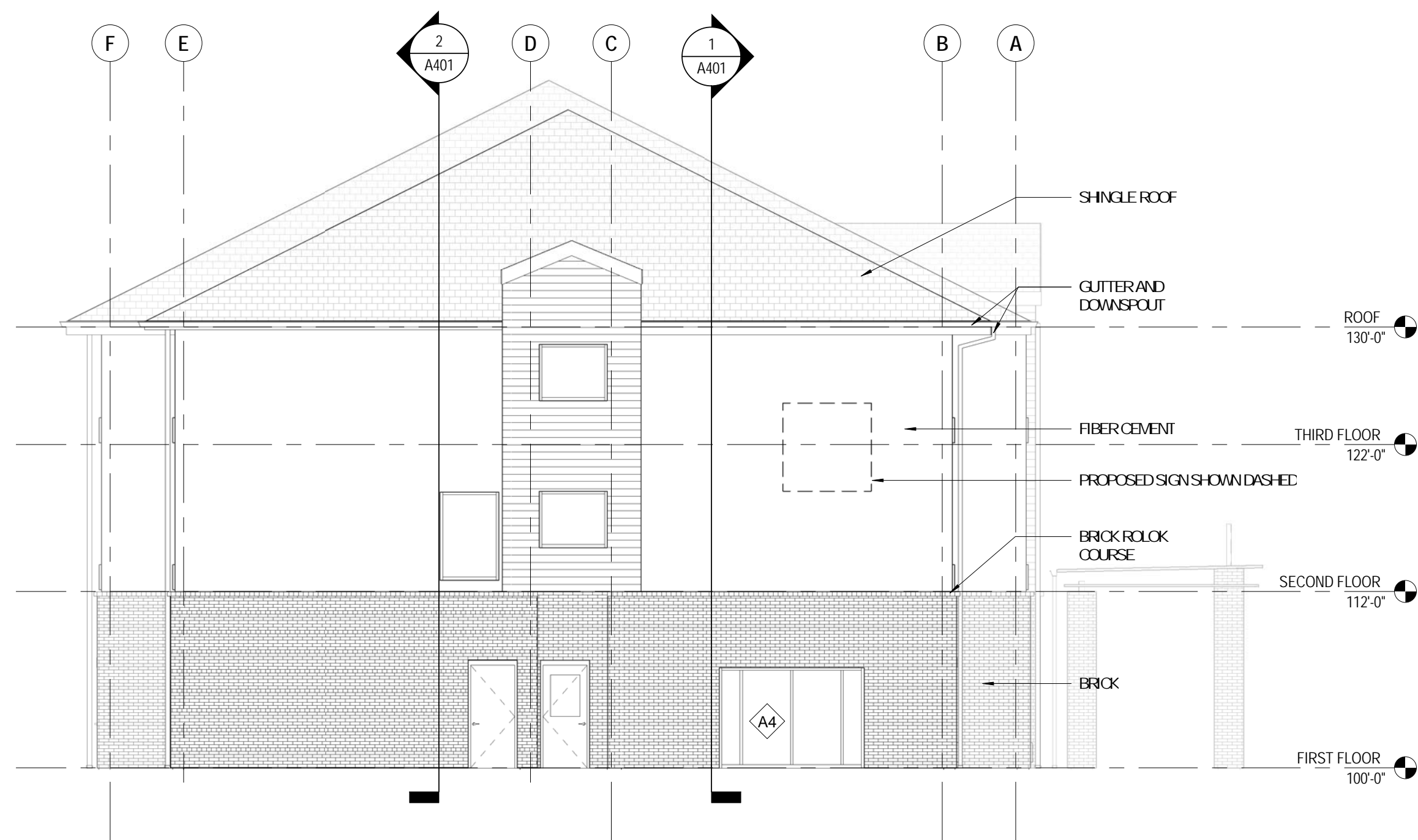
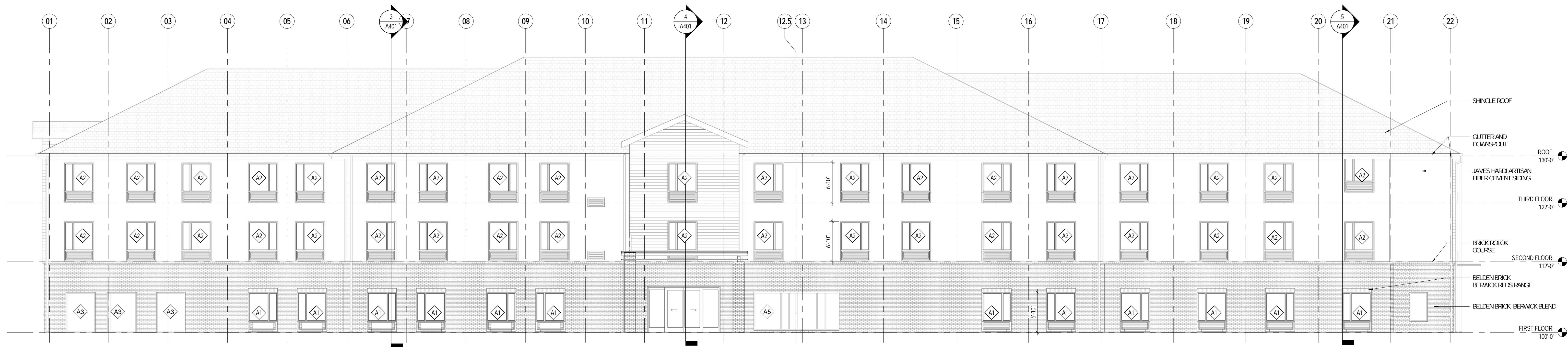


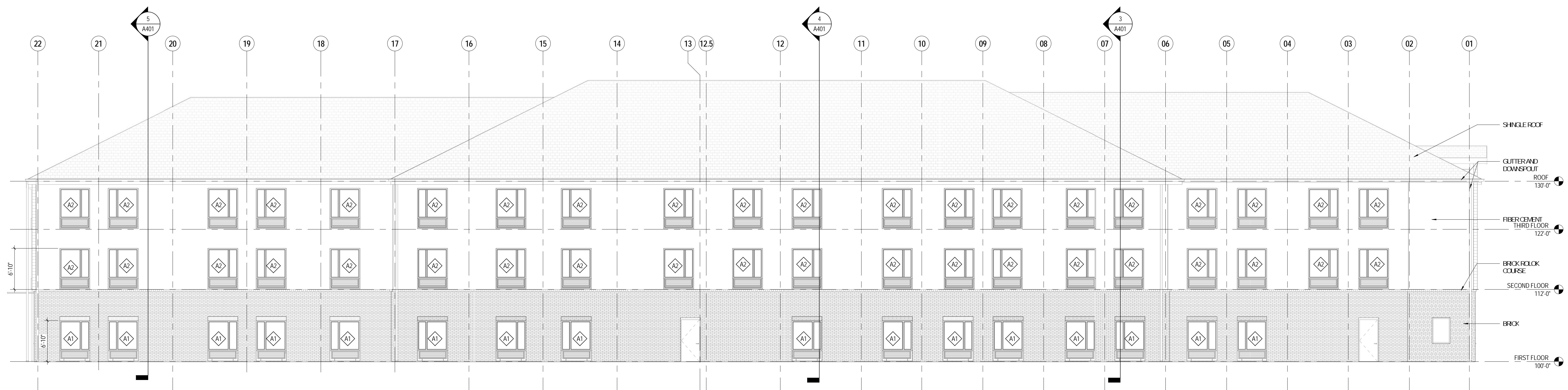
1 ELEVATION NORTH
1/8" = 1'-0"



3 ELEVATION SOUTH
1/8" = 1'-0"



2 ELEVATION EAST
1/8" = 1'-0"



4 ELEVATION WEST
1/8" = 1'-0"

GENERAL NOTES - EXTERIOR ELEVATIONS

1. REFER TO A100 SERIES FOR WINDOW AND DOOR DETAILS.
2. REFER TO REFLECTED CEILING PLANS FOR EXTERIOR SLOTTING INFORMATION.
3. SEE ELEVATIONS AND STRUCTURAL DRAWINGS FOR LOCATIONS OF EXPANSION AND CONTROL JOINTS. CONTRACTORS SHALL PROVIDE ADDITIONAL INTERIOR CONTROL JOINTS AS REQUIRED TO COMPLY WITH MAXIMUM SPACING REQUIREMENTS IN SPECIFICATIONS AND NATIONAL MASONRY INSTITUTE. PROVIDE CONTROL JOINTS AT ALL MASONRY REINFORCEMENT CORNERS.
4. STRUCTURAL STEEL RELATED TO THE EXTERIOR CANOPY SHALL BE GALVANIZED AND PAINTED.
5. WINDOWS TO RECEIVE WINDOW TREATMENTS.
6. 6" WIDE CEMENTITIOUS CORNER TRIM AT ALL TYPICAL AT ALL 90 DEGREE CORNERS. REMOVE TRIM WITH HARD TECT PRIOR TO INSTALLATION.
7. ALL EXPOSED BRICK CRACK OUT TO EXISTING SURFACE OR ALL SURFACES PROTECT FINISHES TO HAVE 4" MAX OPENINGS.
8. REMOVE SPUR FLASHES AT ALL DOWNSPOUTS.
9. AT PENETRATIONS THROUGH SIDING, USE ONE PIECE OF FLAT PANEL WITH HOLES CUT IN AT INSIDE CORNERS OF SIDING. USE 3/4" SQUARE, WHERE SIDING IS LOCATED ON BOTH SIDES.

GLAZING TYPES

	IC-1 EXTERIOR INSULATED GLAZING
	IC-1A EXTERIOR INSULATED GLAZING (TEMPERED)
	IC-2 EXTERIOR INSULATED GLAZING (TRANSLUCENT)
	IC-2A EXTERIOR INSULATED GLAZING (TRANSLUCENT TEMPERED)
	IC-3 EXTERIOR INSULATED GLAZING (SPANDREL - LIGHT GRAY)
	IC-4 EXTERIOR INSULATED GLAZING (SPANDREL - MEDIUM GRAY)
	IC-5 EXTERIOR INSULATED GLAZING (SPANDREL - DARK GRAY)

CODED NOTES

#	DATE	CHANGE DESCRIPTION

6 **studio 6**
5570 TUTTLE CROSSING BLVD
DUBLIN, OHIO 43017
for
Latitude Management

MOODY•NOLAN
300 Spruce Street
Suite 300
Columbus, Ohio 43215
Phone: (614) 461-4664
Fax: (614) 280-8881
www.moodynolan.com

DRAWING TITLE:

EXTERIOR ELEVATIONS

PROGRESS DRAWING NOT FOR CONSTRUCTION	1/28/2017
	DRAWN BY: Author CHECKED BY: Checker
	17148
	A301
50% CD	