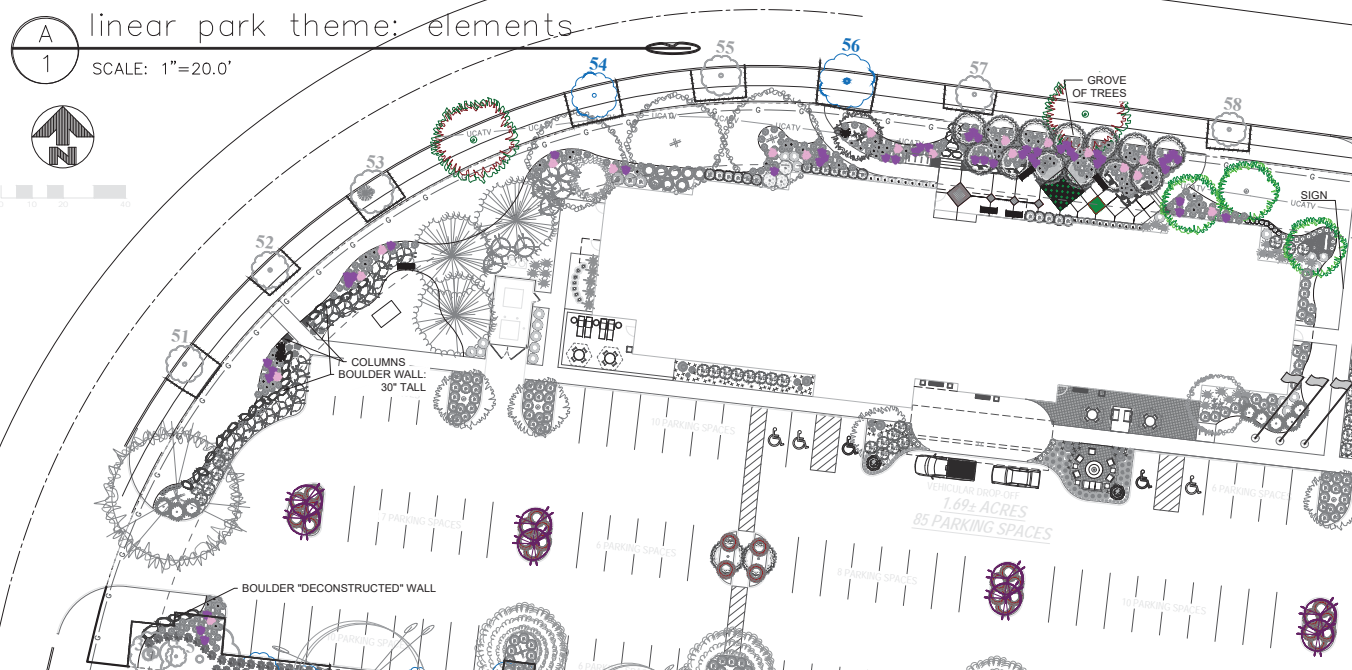


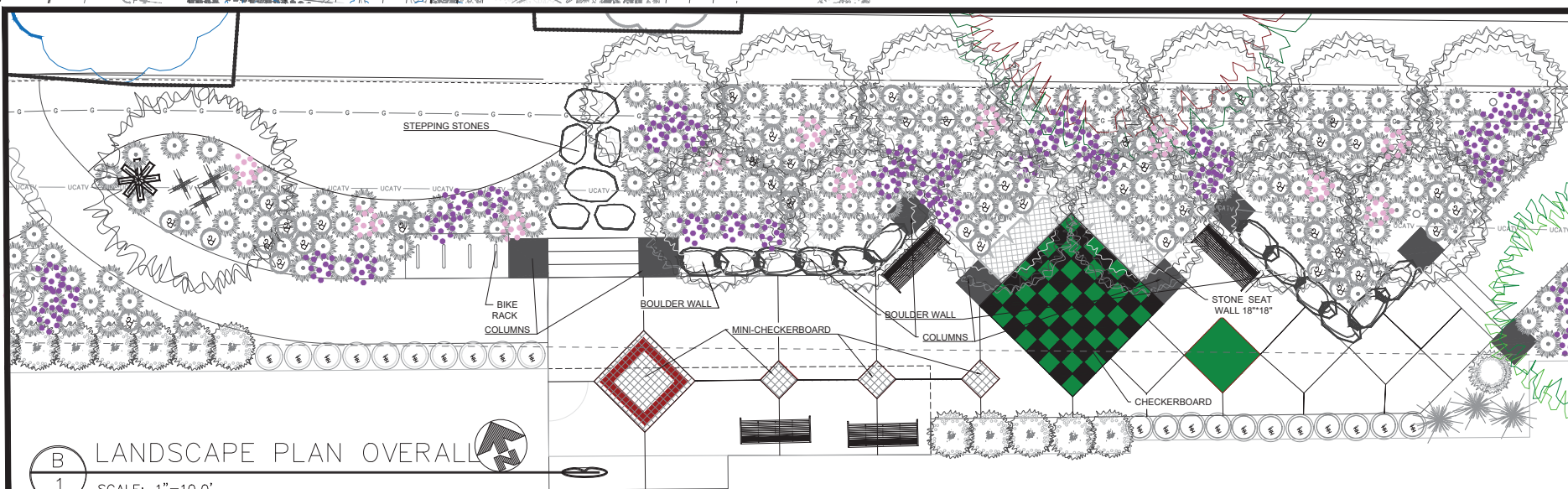
A linear park theme: elements

1 SCALE: 1"=20.0'



LANDSCAPE PLAN OVERALL

SCALE: 1"=10.0'



REVISIONS

○	AUGUST 10, 2017
○	AUGUST 14, 2017
○	SEPTEMBER 14, 2017
○	
○	
○	
○	

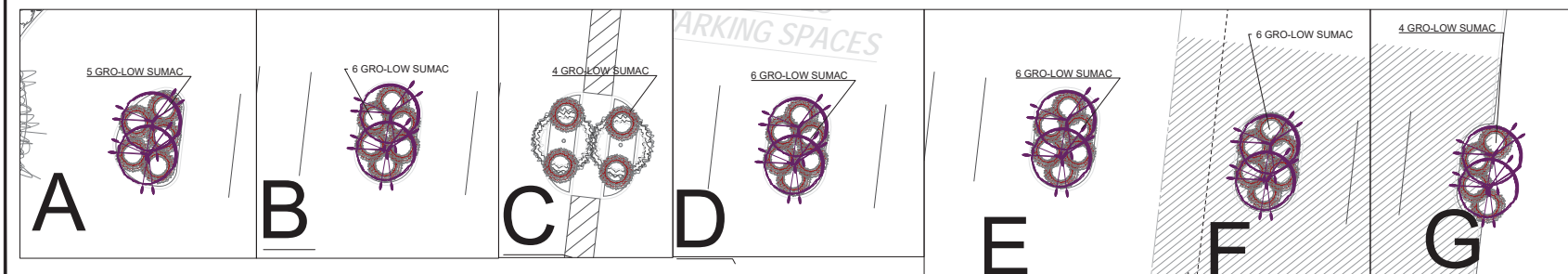
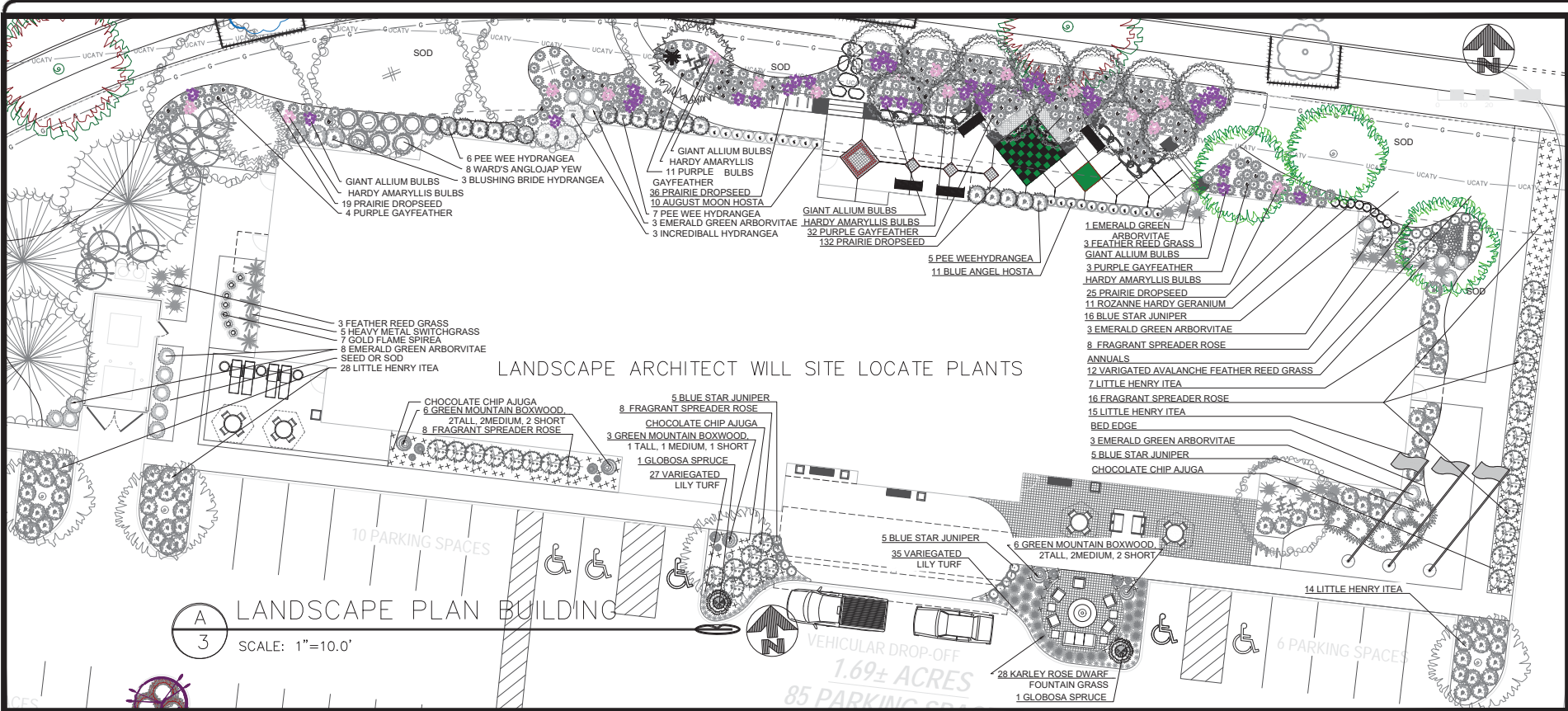
LANDSCAPE PLAN
MARRIOTT HOTEL
LOT #4 UPPER METRO PLACE
CITY OF DUBLIN, FRANKLIN COUNTY, OHIO

SCALE: 1"=20'
DATE: JUNE 1, 2017
DRAWN: WCD
DESIGNED: SAD
CHECKED: RVP
XREF:
JOB NO.: 16061

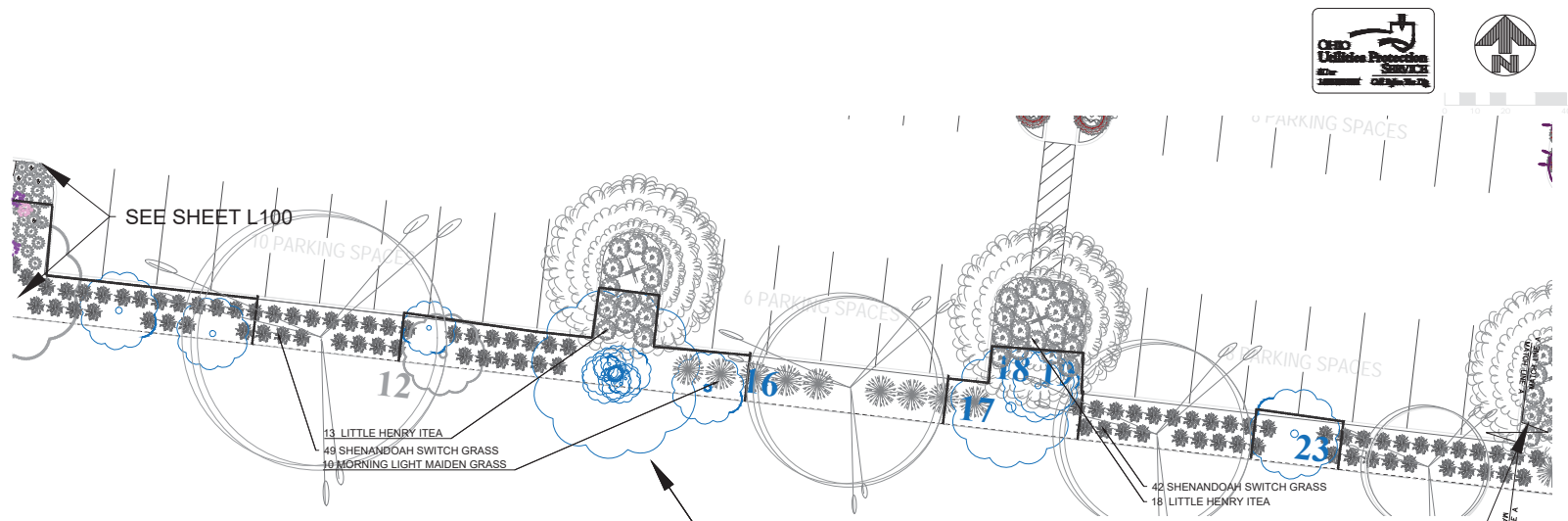
STONEHENGE DUBLIN HOTEL

Page

L200



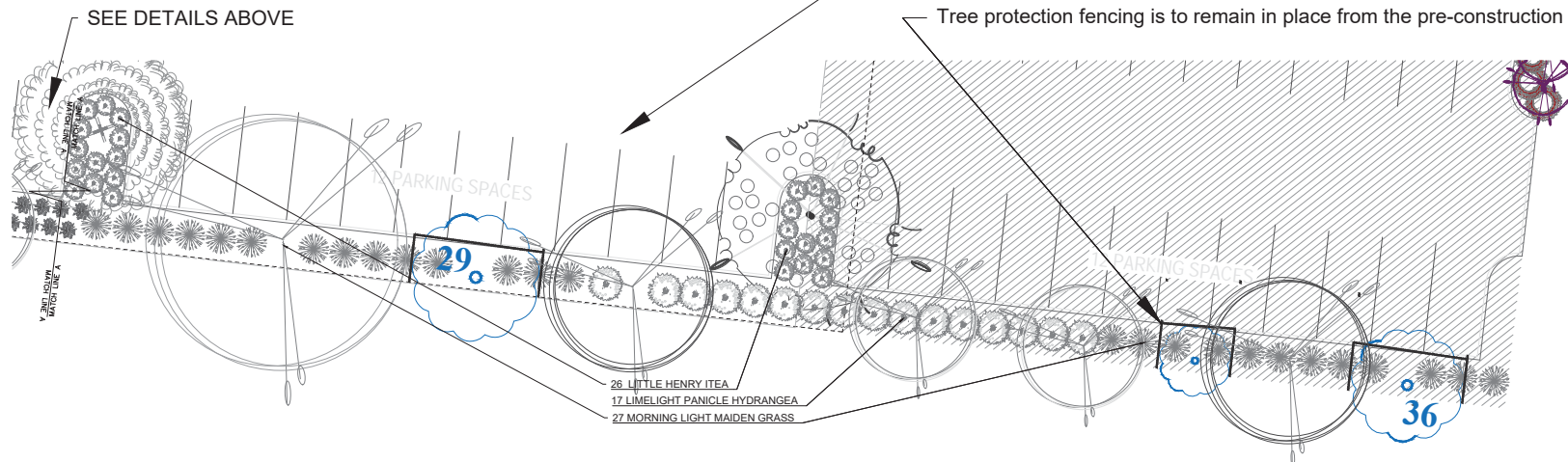
REVISIONS
JUNE 14, 2017
AUGUST 15, 2017
SEPTEMBER 14, 2017



A LANDSCAPE PLAN OVERALL
4 SCALE: 1"=10.0'

SEE DETAILS BELOW

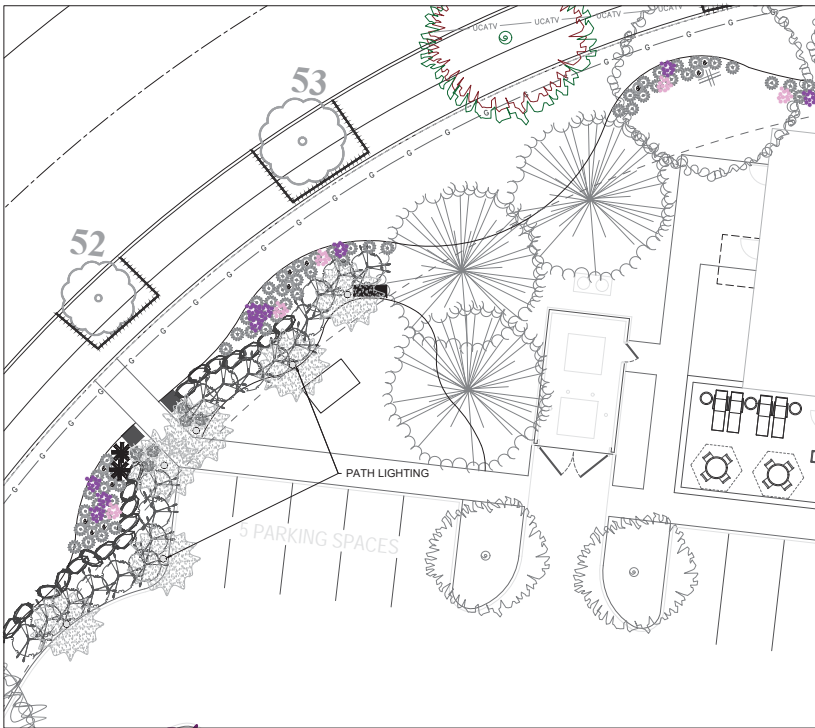
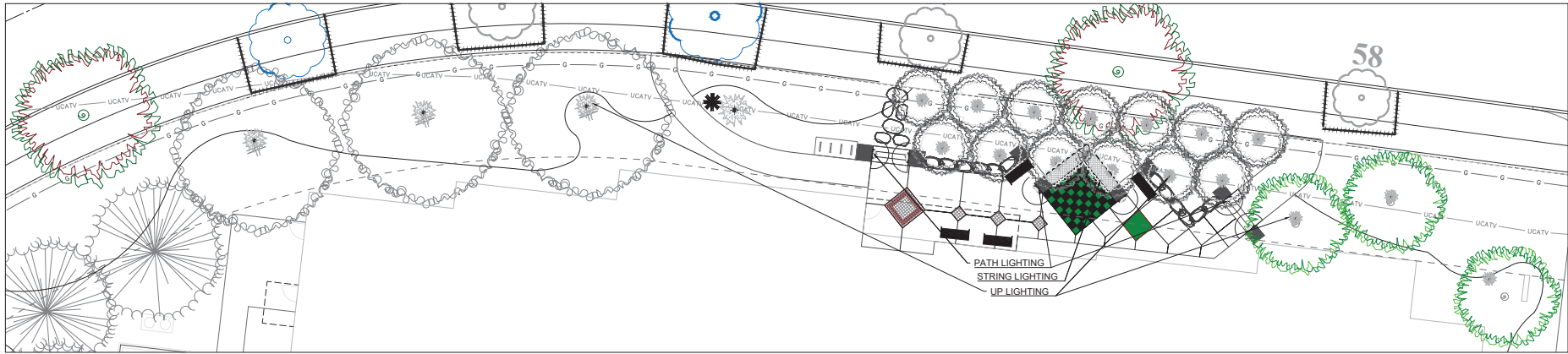
Existing trees will be protected during construction, no utilities or trench's, tunnels, or driveways shall be installed within 10' radius of existing trees without the written approval of the City Forester and/or Zoning Inspector.
Tree protection fencing is to remain in place from the pre-construction to final zoning inspection.



B LANDSCAPE PLAN OVERALL
4 SCALE: 1"=10.0'

REVISIONS

1	AUGUST 10, 2017	
2	AUGUST 15, 2017	
3	SEPTEMBER 14, 2017	
4		
5		
6		
7		
8		
9		
10		



LIGHTING PLAN: PARK

SCALE: 1"=10.0'

GA
Gayle A. Frazier
Registered Landscape Architect

REVISIONS

1	AUGUST 10, 2017	
2	AUGUST 15, 2017	
3	SEPTEMBER 14, 2017	
4		
5		
6		
7		
8		
9		
10		

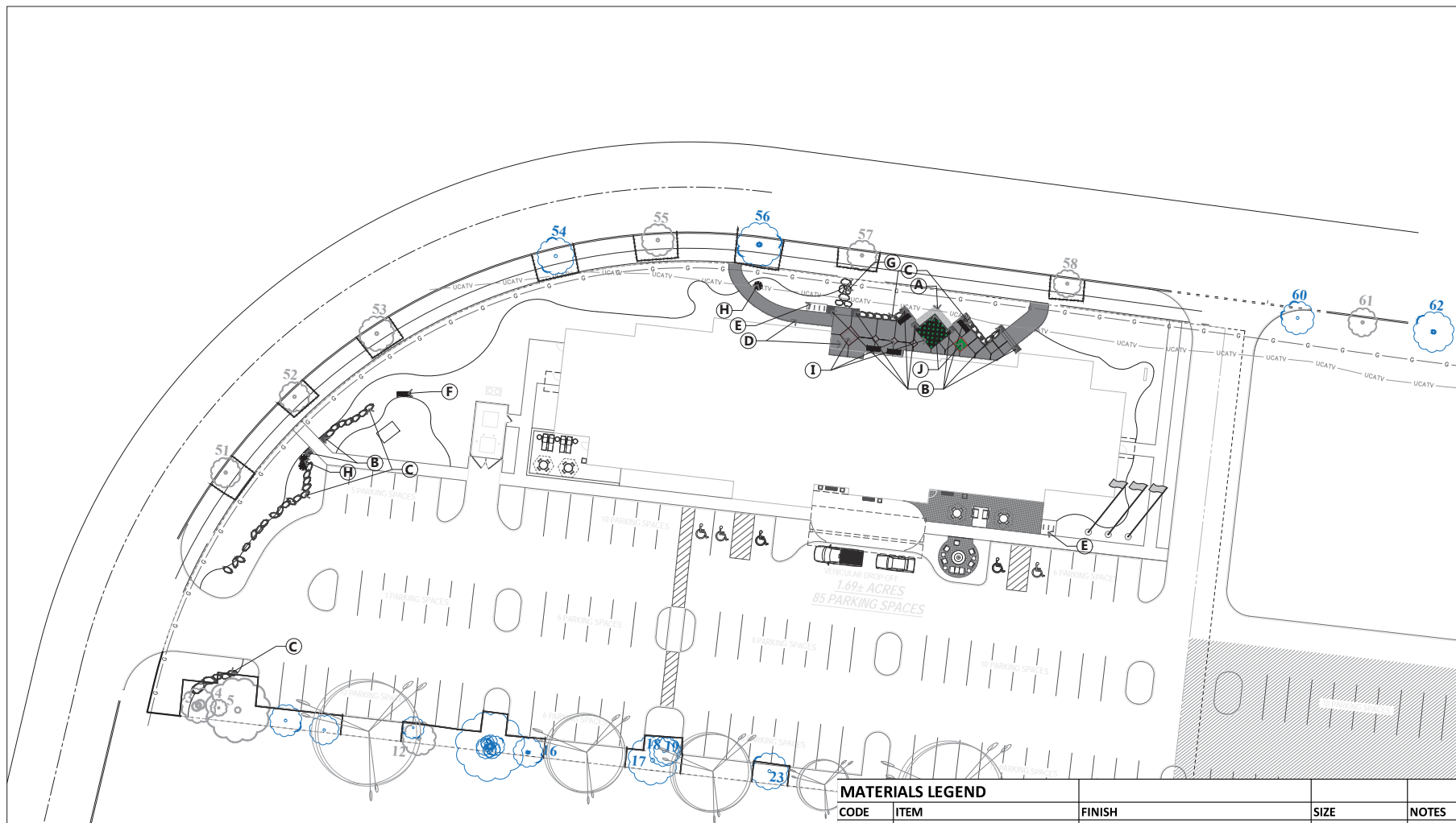
LANDSCAPE PLAN
MARRIOTT HOTEL
LOT #4 UPPER METRO PLACE
CITY OF DUBLIN, FRANKLIN COUNTY, OHIO

SCALE: 1"=20'
DATE: JUNE 1, 2017
DRAWN: WCD
DESIGNED: SAD
CHECKED: RVP
XREF:
JOB NO.: 16061

STONEHEDGE DUBLIN HOTEL

Page

L500



A 1 MATERIALS LEGEND

MATERIALS LEGEND

CODE	ITEM	FINISH	SIZE	NOTES
A	Natural stone retaining wall	see detail	per plan	see detail
B	Natural stone column	see detail	per plan	see detail
C	Boulder wall	see detail	per plan	30" tall, see detail
D	Sidewalk & park area	exposed aggregate	per plan	see detail
E	Bike rack	creative pipe-CP-7-F-SS	per plan	see detail
F	Bench	Steel Arch Bench SKU: 2ZI2217	per plan	see detail
G	Natural stone steppers	TBD	per plan	
H	Sculpture	TBD	per plan	
I	Pavers	Unilock SERIES 3000		
J	Turf		per plan	see detail
K	Trash receptacle	Landscape forms-Scarborough-silver	TBD	TBD

REVISIONS

NO.	DATE	DESCRIPTION
1	JUNE 14, 2017	
2	AUGUST 14, 2017	
3	SEPTEMBER 14, 2017	

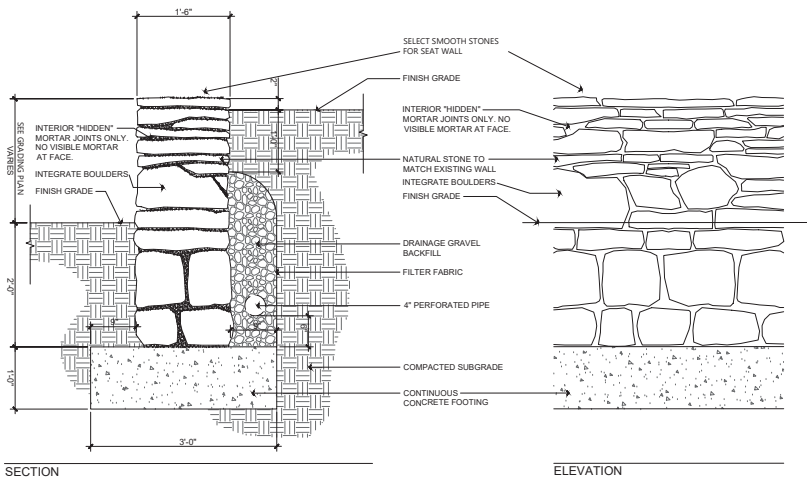
LANDSCAPE PLAN
MARRIOTT HOTEL
LOT #4 UPPER METRO PLACE
CITY OF DUBLIN, FRANKLIN COUNTY, OHIO

SCALE: 1"=20'
DATE: JUNE 1, 2017
DRAWN: WCD
DESIGNED: SAD
CHECKED: RVP
XREF:
JOB NO.: 16061

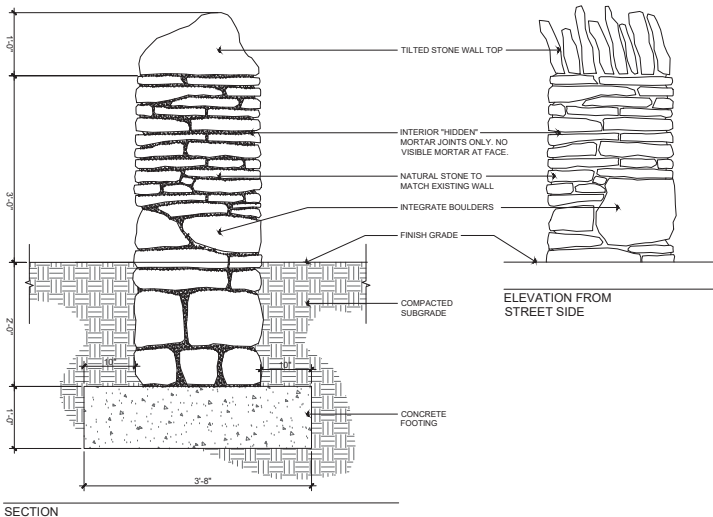
STONEHENGE DUBLIN HOTEL

Page

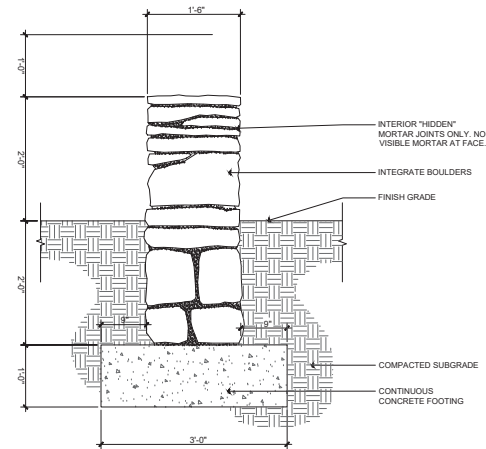
L600



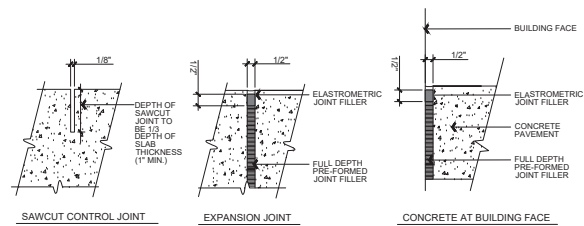
A NATURAL STONE WALL - RETAINING
SCALE: 1" = 1'-0"



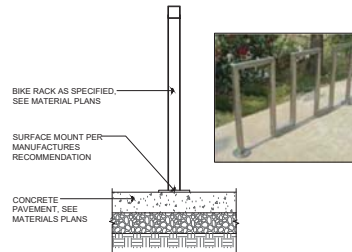
B NATURAL STONE COLUMN
SCALE: 1" = 1'-0"



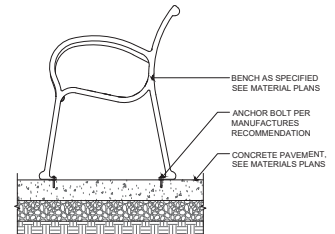
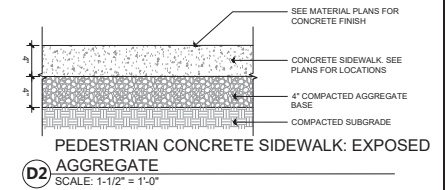
C NATURAL STONE WALL - FREE STANDING
SCALE: 1" = 1'-0"



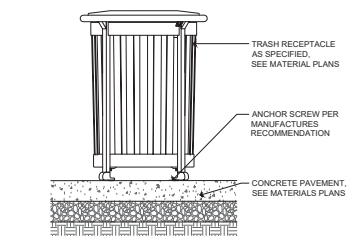
D EXPANSION AND CONTROL JOINTS: EXPOSED AGGREGATE
SCALE: 3" = 1'-0"



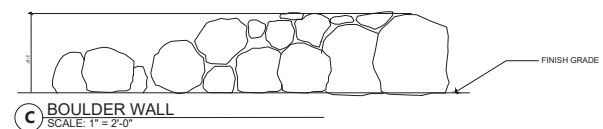
E BIKE RACK MOUNTING
SCALE: 1" = 1'-0"



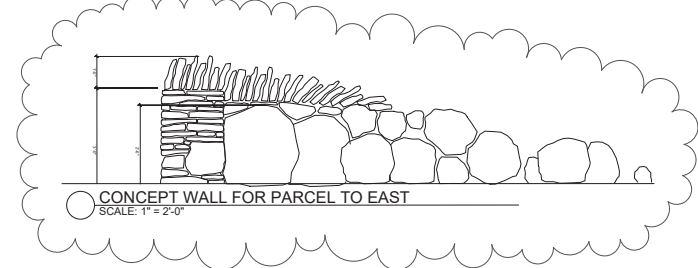
F BENCH MOUNTING
SCALE: 1" = 1'-0"



K TRASH RECEPTACLE
SCALE: 1" = 1'-0"



C BOULDER WALL
SCALE: 1" = 2'-0"



G CONCEPT WALL FOR PARCEL TO EAST
SCALE: 1" = 2'-0"

SPECIFICATIONS AND DETAILS

GENERAL NOTES

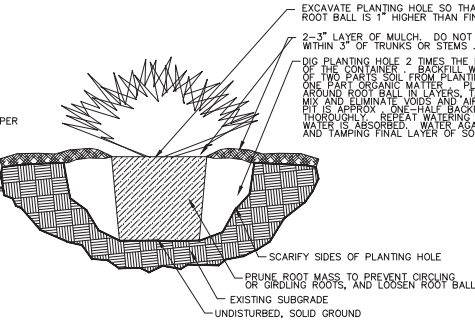
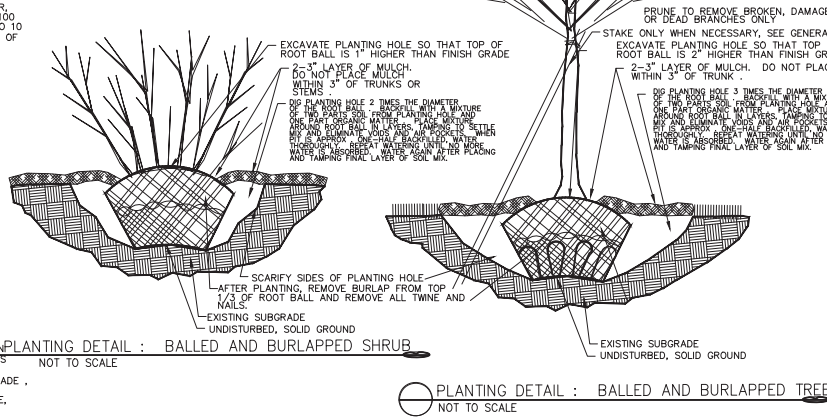
- *ALL TREES AND SPECIMEN PLANT MATERIAL SHALL BE APPROVED BY LANDSCAPE ARCHITECT.
- *PROVIDE QUALITY, SIZE, GENUS, SPECIES, AND VARIETY OF EXTERIOR PLANTS INDICATED, COMPLYING WITH APPLICABLE REQUIREMENTS IN ANSI Z60.1, AMERICAN STANDARD FOR NURSERY STOCK.
- *FURNISH NURSERY-GROWN TREES AND SHRUBS COMPLYING WITH ANSI Z60.1, WITH HEALTHY ROOT SYSTEMS DEVELOPED BY TRANSPLANTING OR ROOT PRUNING. PROVIDE WELL-SHAPED, FULLY BRANCHED, HEALTHY, VIGOROUS STOCK, FREE OF DISEASE, INSECTS, EGGS, LARVAE, AND DEFECTS SUCH AS KNOTS, SUN SCALD, INJURIES, ABRASIONS, AND DISFIGUREMENT.
- *PROVIDE TREES AND SHRUBS OF SIZES AND GRADES COMPLYING WITH ANSI Z60.1 FOR TYPE OF TREES AND SHRUBS REQUIRED. TREES AND SHRUBS OF A LARGER SIZE MAY BE USED, IF ACCEPTABLE TO LANDSCAPE ARCHITECT, WITH A PROPORTIONATE INCREASE IN SIZE OF ROOTS OR BALLS.
- *IF FORMAL ARRANGEMENTS OR CONSECUTIVE ORDER OF TREES OR SHRUBS IS SHOWN, SELECT STOCK FOR UNIFORM HEIGHT AND SPREAD, AND NUMBER LABEL TO ASSURE SYMMETRY IN PLANTING.
- *LABEL AT LEAST ONE TREE AND ONE SHRUB OF EACH VARIETY AND CALIPER WITH A SECURELY ATTACHED, WATERPROOF TAG BEARING LEGIBLE DESIGNATION OF BOTANICAL AND COMMON NAME.
- *LANDSCAPE ARCHITECT MAY OBSERVE TREES AND SHRUBS EITHER AT PLACE OF GROWTH OR AT SITE BEFORE PLANTING FOR COMPLIANCE WITH REQUIREMENTS FOR GENUS, SPECIES, VARIETY, SIZE, AND QUALITY. LANDSCAPE ARCHITECT RETAINS RIGHT TO OBSERVE TREES AND SHRUBS FURTHER FOR SIZE AND CONDITION OF BALLS AND ROOT SYSTEMS, INSECTS, INJURIES, AND LATENT DEFECTS AND TO REJECT UNSATISFACTORY OR DEFECTIVE MATERIAL AT ANY TIME DURING PROGRESS OF WORK. REMOVE REJECTED TREES OR SHRUBS IMMEDIATELY FROM PROJECT SITE.
- *TOPSOIL SHALL BE ASTM D 5286, pH RANGE OF 5.5 TO 7, A MINIMUM OF 4 PERCENT ORGANIC MATTER, FREE OF STONES LARGER THAN 1/2" IN ANY DIMENSION AND OTHER EXTRANEOUS MATERIALS HARMFUL TO PLANT GROWTH.
- *COMPOST SHALL BE WELL-COMPOSTED, STABLE, AND WEED-FREE ORGANIC MATTER, pH RANGE OF 5.5 TO 8; MOISTURE CONTENT 35 TO 55 PERCENT BY WEIGHT; 100 PERCENT PASSING THROUGH ONE INCH SIEVE; SOLUBLE SALT CONTENT OF 5 TO 10 MG/100GMS/M; NOT EXCEEDING 0.5 PERCENT INERT CONTAMINANTS AND FREE OF SUBSTANCES TOXIC TO PLANTINGS.
- *FERTILIZER TO BE SLOW-RELEASE, GRANULAR OR PELLETTED CONSISTING OF 50 PERCENT WATER-INSOLUBLE NITROGEN, PHOSPHORUS, AND POTASSIUM IN AMOUNTS RECOMMENDED FOR TYPE OF PLANT BEING GROWN.
- *MULCH TO BE FREE FROM DELETERIOUS MATERIALS AND SUITABLE AS A TOP DRESSING OF TREES AND SHRUBS AND WILL BE EITHER SHREDDED HARDWOOD OR FINE STRAW UNLESS NOTED OTHERWISE.
- PREPARATION AND PLANTING**
- *LOCATE ALL UNDERGROUND UTILITIES PRIOR TO STARTING WORK. IF A PLANT IS SHOWN ON THE PLAN WITHIN THREE FEET OF AN UNDERGROUND UTILITY, NOTIFY LANDSCAPE ARCHITECT FOR ADJUSTMENT INSTRUCTIONS.
- *PROTECT STRUCTURES, UTILITIES, SIDEWALKS, PAVEMENTS, AND OTHER FACILITIES, AND LAWNS AND EXISTING EXTERIOR PLANTS FROM DAMAGE CAUSED BY PLANTING OPERATIONS.
- *PROVIDE EROSION-CONTROL MEASURES TO PREVENT EROSION OR DISPLACEMENT OF SOILS AND DISCHARGE OF SOIL-BEARING RUNOFF OR AIRBORNE DUST TO ADJACENT PROPERTIES AND WALKWAYS.
- *LAY OUT INDIVIDUAL TREE AND SHRUB LOCATIONS AND AREAS FOR MULTIPLE EXTERIOR PLANTINGS. STAKE LOCATIONS, OUTLINE AREAS, ADJUST LOCATIONS WHEN REQUESTED, AND OBTAIN LANDSCAPE ARCHITECT'S ACCEPTANCE OF LAYOUT BEFORE PLANTING. MAKE MINOR ADJUSTMENTS AS REQUIRED.
- *TREES SHALL BE SITED IN FIELD BY LANDSCAPE ARCHITECT WHERE NOTED ON PLANS.
- *ALL PLANTING BEDS ARE TO BE PREPARED AS FOLLOWS:
 - LOOSEN SUBGRADE TO A DEPTH OF 4" - 6". REMOVE STONES LARGER THAN 1" IN ANY DIMENSION AND STICKS, ROOTS, RUBBISH, AND OTHER EXTRANEOUS MATTER, AND LEGALLY DISPOSE OF THEM OFF OWNER'S PROPERTY.
 - SPREAD COMPOST AT A DEPTH OF 4" - 6" AND TILL WITH LOOSENED SUBGRADE, MIXING THOROUGHLY.
 - GRADE PLANTING BEDS TO A SMOOTH, UNIFORM SURFACE PLANE WITH LOOSE, UNIFORMLY FINE TEXTURE. ROLL AND RAKE, REMOVE RIDGES, AND FILL DEPRESSIONS TO MEET FINISH GRADES.
 - EDGE BEDS 3" - 4" DEEP (SEE DETAIL).
- *NOTIFY LANDSCAPE ARCHITECT IF SUBSOIL CONDITIONS SHOW EVIDENCE OF UNEXPECTED WATER SEEPAGE OR RETENTION IN TREE OR SHRUB PITS.
- *ALL PLANTS ARE TO BE FERTILIZED WITH A SLOW-RELEASE FERTILIZER PER MANUFACTURER'S WRITTEN INSTRUCTIONS.
- *REFER TO TYPICAL PLANTING DETAILS FOR PLANT INSTALLATION.
- *IT IS THE CONTRACTOR'S OPTION WHETHER OR NOT TO STAKE A TREE, BUT IT IS ALSO THE CONTRACTOR'S RESPONSIBILITY TO ASSURE PLANTS REMAIN IN AN UPRIGHT POSITION UNTIL THE END OF THE WARRANTY PERIOD.
- *ALL PLANTING BEDS AND INDIVIDUAL TREES AND SHRUBS ARE TO BE MULCHED AT A DEPTH OF 2" - 3". APPLY PRE-EMERGENT HERBICIDE BEFORE MULCHING PER MANUFACTURER'S WRITTEN INSTRUCTIONS.
- *FOR ALL PLANT MATERIALS, PRUNE TO REMOVE DEAD OR INJURED BRANCHES ONLY, UNLESS OTHERWISE DIRECTED BY LANDSCAPE ARCHITECT.
- *IT IS THE CONTRACTOR'S RESPONSIBILITY TO:
 - KEEP ADJACENT PAVINGS AND CONSTRUCTION CLEAN, AND MAINTAIN WORK AREA IN AN ORDERLY CONDITION, FOR DURATION OF PROJECT.
 - PROTECT EXTERIOR PLANTS FROM DAMAGE DUE TO LANDSCAPE OPERATIONS, OPERATIONS BY OTHER CONTRACTORS AND TRADES, AND OTHERS. MAINTAIN PROTECTION DURING INSTALLATION AND MAINTENANCE PERIODS. TREAT, REPAIR, OR REPLACE DAMAGED EXTERIOR PLANTING.
 - REMOVE SURPLUS SOIL AND WASTE MATERIAL, INCLUDING EXCESS SUBSOIL, UNSUITABLE SOIL, TRASH, AND DEBRIS, AND LEGALLY DISPOSE OF THEM OFF OWNER'S PROPERTY.

WARRANTY

- *CONTRACTOR SHALL PROVIDE OWNER WITH A WRITTEN WARRANTY FOR LABOR AND MATERIALS.
- *CONTRACTOR SHALL WARRANT EXTERIOR PLANTS AGAINST DEFECTS, INCLUDING DEATH AND UNSATISFACTORY GROWTH, EXCEPT FOR DEFECTS RESULTING FROM LACK OF ADEQUATE MAINTENANCE, NEGLECT OR ABUSE BY OWNER, OR INCIDENTS THAT ARE BEYOND CONTRACTOR'S CONTROL.
- *WARRANTY SHALL INCLUDE SPECIFIC WARRANTY PERIODS FOR TREES AND SHRUBS, GROUND COVERS, AND OTHER EXTERIOR PLANTS.
- *SERVICES PROVIDED BY WARRANTY SHALL INCLUDE:
 - MAINTAINING UPRIGHT POSITION OF EXTERIOR PLANTINGS DURING WARRANTY PERIOD.
 - IMMEDIATE REMOVAL OF DEAD EXTERIOR PLANTS AND IMMEDIATE REPLACEMENT, UNLESS REQUIRED TO PLANT IN THE SUCCEEDING PLANTING SEASON.
 - REPLACEMENT OF EXTERIOR PLANTS THAT ARE MORE THAN 25 PERCENT DEAD OR IN UNHEALTHY CONDITION AT END OF WARRANTY PERIOD.
- *WARRANTY SHALL BE LIMITED TO ONE REPLACEMENT OF EACH EXTERIOR PLANT, EXCEPT FOR LOSSES OR REPLACEMENTS DUE TO FAILURE OF CONTRACTOR TO COMPLY WITH REQUIREMENTS.

SEEDING

- *SEED ALL DISTURBED AREAS, THE FINAL GRADE AND TOPSOIL WITHIN +/- .10 FEET WILL BE IN PLACE FOR SEEDING CONTRACTOR.
- *APPLY A HIGH PHOSPHORUS FERTILIZER AT THE RATE OF 2-3 LB PER 1000 SF.
- *TILL AREA TO BE SEED TO A DEPTH OF 4". RAKE TILLED AREA TO REMOVE DEBRIS 1" OR LARGER IN SIZE THAT HAS BEEN BROUGHT TO THE SURFACE DURING TILLING.
- *SEED WITH APPROPRIATE MIXTURE AT THE MANUFACTURER'S WRITTEN RECOMMENDED RATE.
- *RAKE SEED LIGHTLY INTO TOP OF TOPSOIL, ROLL LIGHTLY, AND WATER WITH FINE SPRAY.
- *PROTECT SEEDING AREAS WITH SLOPES EXCEEDING 1:6 WITH EROSION-CONTROL FIBER MESH INSTALLED AND STAPLED ACCORDING TO MANUFACTURER'S WRITTEN INSTRUCTIONS.
- *PROTECT ALL OTHER SEEDING AREAS BY SPREADING STRAW MULCH AT A UNIFORM RATE OF 2 TONS PER ACRE TO FORM A CONTINUOUS BLANKET 1-1/2" IN LOOSE DEPTH OVER SEEDING AREAS.



PLANTING DETAIL : CONTAINERIZED PLANTS
NOT TO SCALE

BED EDGE SHALL NOT BE ROUGH, BUT CLEAN, SMOOTH, AND CONTINUOUS AS SHOWN ON PLANS. MINOR FIELD ADJUSTMENTS ARE ALLOWED DUE TO UNEXPECTED OBSTRUCTIONS.

PLANTING DETAIL : BED EDGE
NOT TO SCALE

PLANT KEY				9.11.17
QNT	SIZE	LATIN	COMMON	
1	2 in	Ulmus americana 'New Harmony'	New Harmony American Elm	
4	2 in	Quercus robur 'Rosehill'	Rosehill Columnar English Oak	
13	2 in	Liquidambar styraciflua 'Slender Silhouette'	Sweetgum slender silhouette	
3	2 in	Gleditsia triacanthos inermis 'Skyline'	Skyline Honeylocust	
3	2 in	Quercus robur 'Rosehill'	Rosehill Columnar English Oak	
2	25	Quercus rubra	Red Oak	
48	47 CALIPER INCHES REQUIRED PER TREE SURVEY TO BE REPLACED: PROVIDED			
2	25	Quercus rubra	Red Oak	
37	3 gal	Rhus aromatica 'Gro-Low'	Gro-Low Fragrant Sumac	
12	2 in	Malus x 'Jelskpe'	Purple Spire Columnar Crabapple	
2	2 in	Liquidambar styraciflua 'Slender Silhouette'	Sweetgum slender silhouette	
14	8 shade trees required: provided per parking 1 per 12 spaces			
2	15 in	Acer saccharum 'Green Mountain'	Green Mountain Maple	
2	15 in	Acer rubrum 'Autumn Blaze'	Autumn Blaze Maple	
3	15 in	Acer saccharum 'Appolo'	Appolo Sugar Maple	
1	15 in	Acer rubrum 'Red Sunset'	Red Sunset Maple	
1	15 in	Acer rubrum 'October Glory'	October Glory Maple	
9	Added as requested per Memo			
18	5 gal	Syringa meyeri 'Palibin'	Dwarf Korean Lilac	
8	3 gal	Juniperus conferta 'Blue Pacific'	Blue Pacific Juniper	
28	5 gal	Hydrangea arborescens 'Incrediball'	Incrediball Hydrangea	
3	5 gal	Hydrangea macrophylla 'Blushing Bride'	Blushing Bride Hydrangea	
7	3 gal	Spiraea x bumalda 'Goldflame'	Goldflame Spiraea	
8	36 in	Viburnum x burkwoodii	Burkwood Viburnum	
18	3 gal	Hydrangea quercifolia 'Pee Wee'	Pee Wee Hydrangea	
58	2 gal	Rosa 'Fragrant Spreader'	Fragrant Spreader Rose	
5	15 in	Buxus x 'Green Mountain'	Green Mountain Boxwood	
5	24 in	Buxus x 'Green Mountain'	Green Mountain Boxwood	
5	36 in	Buxus x 'Green Mountain'	Green Mountain Boxwood	
8	18-24 in	Taxus x media 'Ward'	Ward's Angliop Yew	
2	18-24 in	Picea pungens 'Globoza'	Globoza Spruce	
21	3 gal	Juniperus squamata 'Blue Star'	Blue Star Juniper	
16	6'	Thuja occidentalis 'Emerald'	Emerald Green Arborvitae	
138	(D)(7)(b) foundation planting required 60.2 provided			
78	68 beyond required			
3	2 in	Taxodium distichum	Bald Cypress	
1	2 in	Nyssa sylvatica 'Wildfire'	Black Gum Wildfire	
16	5 gal	Hydrangea paniculata 'Limelight'	Limelight Panicle Hydrangea	
35	3 gal	Miscanthus sinensis 'Morning Light'	Morning Light Maiden Grass	
98	3 gal	Panicum virgatum 'Shenandoah'	Shenandoah Switch Grass	
149	138 ornamental grasses provided, to disturb the existing tree roots the least			
138	(D)(7)(b) foundation planting required 60.2 provided			
120	3 gal	Itea virginica 'Little Henry'	Little Henry Itea	
338	PP	Sporobolus heterolepis	Prairie Dropseed	
10	1 gal	Hosta 'August Moon'	August Moon Hosta	
11	1 gal	Hosta 'Blue Angel'	Blue Angel Hosta	
8	1 gal	Geranium 'Rozanne'	Rozanne Geranium	
6	1 gal	Amsonia hubrechtii	Threadleaf Bluestar	
17	1 gal	Nepeta faassenii 'Drogon'	Catnip	
62	1 gal	Liriodendron 'Variegata'	Variegated Lily Turf	
166	1 gal	Agave 'Chocolate Chip'	Chocolate Chip Agave	
19	6-7'	Thuja occidentalis 'Emerald'	Emerald Green Arborvitae	
1	6-7'	Thuja plicata 'Grovehill'	Spring Grove Arborvitae	
5	3 gal	Panicum virgatum 'Heavy Metal'	Heavy Metal Switch Grass	
27	3 gal	Calamagrostis x acutiflora 'Avalanche'	Variegated Avalanche Feather Reed Grass	
28	2 gal	Pennisetum orientale 'Varley Rose'	Varley Rose Fountain Grass	
67	1 gal	Liatris spicata 'Kobold'	Purple Gayfeather	
150	EA	Giant Allium Bulb		
100	EA	Surprise Lily		

PLAN BY:
7377 BRIDGEPOINT PASS CINCINNATI, OHIO 45248
513-607-4096 GAFLA@FUSE.NET

Gayle A. Frazier
Registered Landscape Architect

Gayle A. Frazier
Registered Landscape Architect

REVISIONS

NO.	DATE	DESCRIPTION
1	JUNE 14, 2017	
2	AUGUST 14, 2017	
3	SEPTEMBER 14, 2017	
4		
5		
6		
7		
8		
9		
10		

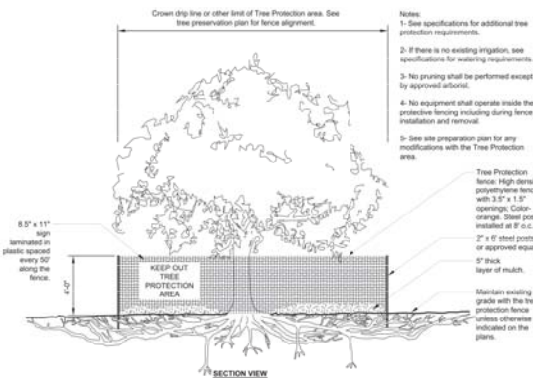
SPECIFICATIONS AND PLANTING DETAILS
MARRIOTT HOTEL
LOT #4 UPPER METRO PLACE
CITY OF DUBLIN, FRANKLIN COUNTY, OHIO

SCALE:
DATE: JUNE 14, 2017
DRAWN: WCD
DESIGNED: SAD
CHECKED: RVP
XREF:
JOB NO.: 16061

STONEHEDGE DUBLIN HOTEL

Page

L800



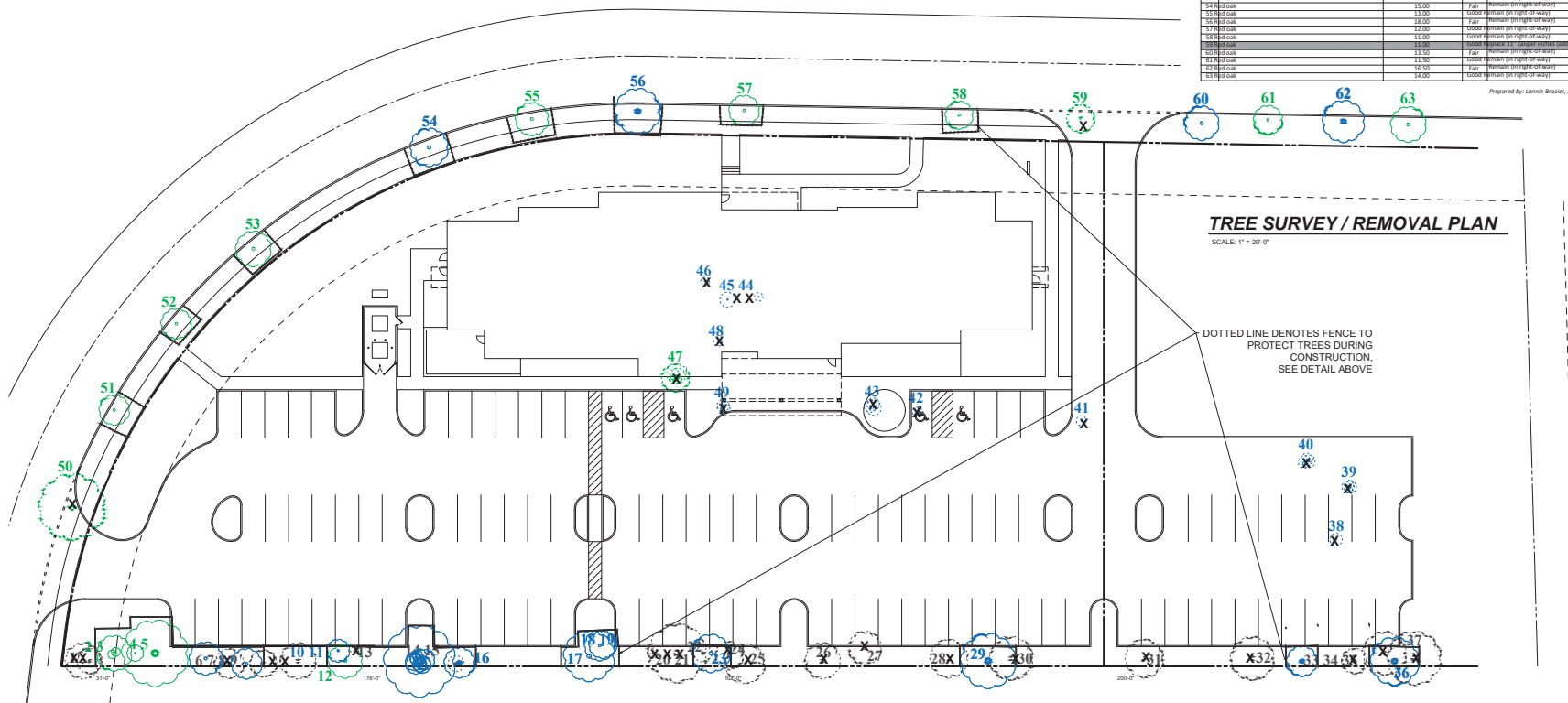
S-X TREE PROTECTION

UPPER TREE FOUNDATION © 2014
OPEN SOURCE TREE TOOLBOX

TREE KING TREE SERVICES, INC.
P.O. Box 1338
Painesville, OH 44062
740-927-4291
www.treekinginc.com

Upper Metro Pl. Lot 4 5155 Upper Metro Pl. Dublin, aOH 43017

Item #	Description	DBH	Condition	Comments	HL Root Boundary
1	Cherry	18.00	Fair	Remove due to poor condition	2
2	Cherry	18.00	Fair	Remove due to poor condition	2
3	Cherry	18.00	Fair	Remove due to poor condition	2
4	Cherry	18.00	Fair	Remove due to poor condition	2
5	Cherry	18.00	Fair	Remove due to poor condition	2
6	Cherry	18.00	Fair	Remove due to poor condition	2
7	Cherry	18.00	Fair	Remove due to poor condition	2
8	Cherry	18.00	Fair	Remove due to poor condition	2
9	Cherry	18.00	Fair	Remove due to poor condition	2
10	Cherry	18.00	Fair	Remove due to poor condition	2
11	Cherry	18.00	Fair	Remove due to poor condition	2
12	Cherry	18.00	Fair	Remove due to poor condition	2
13	Cherry	18.00	Fair	Remove due to poor condition	2
14	Cherry	18.00	Fair	Remove due to poor condition	2
15	Cherry	18.00	Fair	Remove due to poor condition	2
16	Cherry	18.00	Fair	Remove due to poor condition	2
17	Cherry	18.00	Fair	Remove due to poor condition	2
18	Cherry	18.00	Fair	Remove due to poor condition	2
19	Cherry	18.00	Fair	Remove due to poor condition	2
20	Cherry	18.00	Fair	Remove due to poor condition	2
21	Cherry	18.00	Fair	Remove due to poor condition	2
22	Cherry	18.00	Fair	Remove due to poor condition	2
23	Cherry	18.00	Fair	Remove due to poor condition	2
24	Cherry	18.00	Fair	Remove due to poor condition	2
25	Cherry	18.00	Fair	Remove due to poor condition	2
26	Cherry	18.00	Fair	Remove due to poor condition	2
27	Cherry	18.00	Fair	Remove due to poor condition	2
28	Cherry	18.00	Fair	Remove due to poor condition	2
29	Cherry	18.00	Fair	Remove due to poor condition	2
30	Cherry	18.00	Fair	Remove due to poor condition	2
31	Cherry	18.00	Fair	Remove due to poor condition	2
32	Cherry	18.00	Fair	Remove due to poor condition	2
33	Cherry	18.00	Fair	Remove due to poor condition	2
34	Cherry	18.00	Fair	Remove due to poor condition	2
35	Cherry	18.00	Fair	Remove due to poor condition	2
36	Cherry	18.00	Fair	Remove due to poor condition	2
37	Cherry	18.00	Fair	Remove due to poor condition	2
38	Cherry	18.00	Fair	Remove due to poor condition	2
39	Cherry	18.00	Fair	Remove due to poor condition	2
40	Cherry	18.00	Fair	Remove due to poor condition	2
41	Cherry	18.00	Fair	Remove due to poor condition	2
42	Cherry	18.00	Fair	Remove due to poor condition	2
43	Cherry	18.00	Fair	Remove due to poor condition	2
44	Cherry	18.00	Fair	Remove due to poor condition	2
45	Cherry	18.00	Fair	Remove due to poor condition	2
46	Cherry	18.00	Fair	Remove due to poor condition	2
47	Cherry	18.00	Fair	Remove due to poor condition	2
48	Cherry	18.00	Fair	Remove due to poor condition	2
49	Cherry	18.00	Fair	Remove due to poor condition	2
50	Cherry	18.00	Fair	Remove due to poor condition	2
51	Cherry	18.00	Fair	Remove due to poor condition	2
52	Cherry	18.00	Fair	Remove due to poor condition	2
53	Cherry	18.00	Fair	Remove due to poor condition	2
54	Cherry	18.00	Fair	Remove due to poor condition	2
55	Cherry	18.00	Fair	Remove due to poor condition	2
56	Cherry	18.00	Fair	Remove due to poor condition	2
57	Cherry	18.00	Fair	Remove due to poor condition	2
58	Cherry	18.00	Fair	Remove due to poor condition	2
59	Cherry	18.00	Fair	Remove due to poor condition	2
60	Cherry	18.00	Fair	Remove due to poor condition	2
61	Cherry	18.00	Fair	Remove due to poor condition	2
62	Cherry	18.00	Fair	Remove due to poor condition	2
63	Cherry	18.00	Fair	Remove due to poor condition	2



REVISIONS

NO.	DATE	DESCRIPTION
1	JUNE 14, 2017	Initial Survey
2	AUGUST 14, 2017	Final Survey
3	SEPTEMBER 14, 2017	Final Survey

TREE SURVEY
MARRIOTT HOTEL
LOT #4 UPPER METRO PLACE
CITY OF DUBLIN, FRANKLIN COUNTY, OHIO

SCALE:
DATE: JUNE 1, 2017
DRAWN: WCD
DESIGNED: SAD
CHECKED: RVP
XREF:
JOB NO.: 16061

STONEHENGE DUBLIN HOTEL

Page
L900

