

PARKING PROVIDED	
DESIGNATION	QTY
Phase 1 - Accessible Space	2
Phase 1 - Standard 9x20 space	60
Phase 1 - Van Accessible Space	1
Phase 2 - Accessible Space	2
Phase 2 - Standard 9x20 space	56
Phase 2 - Van Accessible Space	1
	122

PARKING REQ'D - PHASE 1
WEST INNOVATION DISTRICT REQUIREMENTS
PER 153.040 - RECREATION USE:
20,000 SF / 150 = 134 SPACES
-OR-
446 OCCUPANTS (BLDG 1) = 446 / 3 = 149 SPACES MAXIMUM
CITY OF DUBLIN ZONING REQUIREMENTS
PER 153.211:
RECREATION, 1 per 250 sf: 20,000 SF / 250 = 80 SPACES MINIMUM
PROVIDED, PHASE 1: 63 SPACES

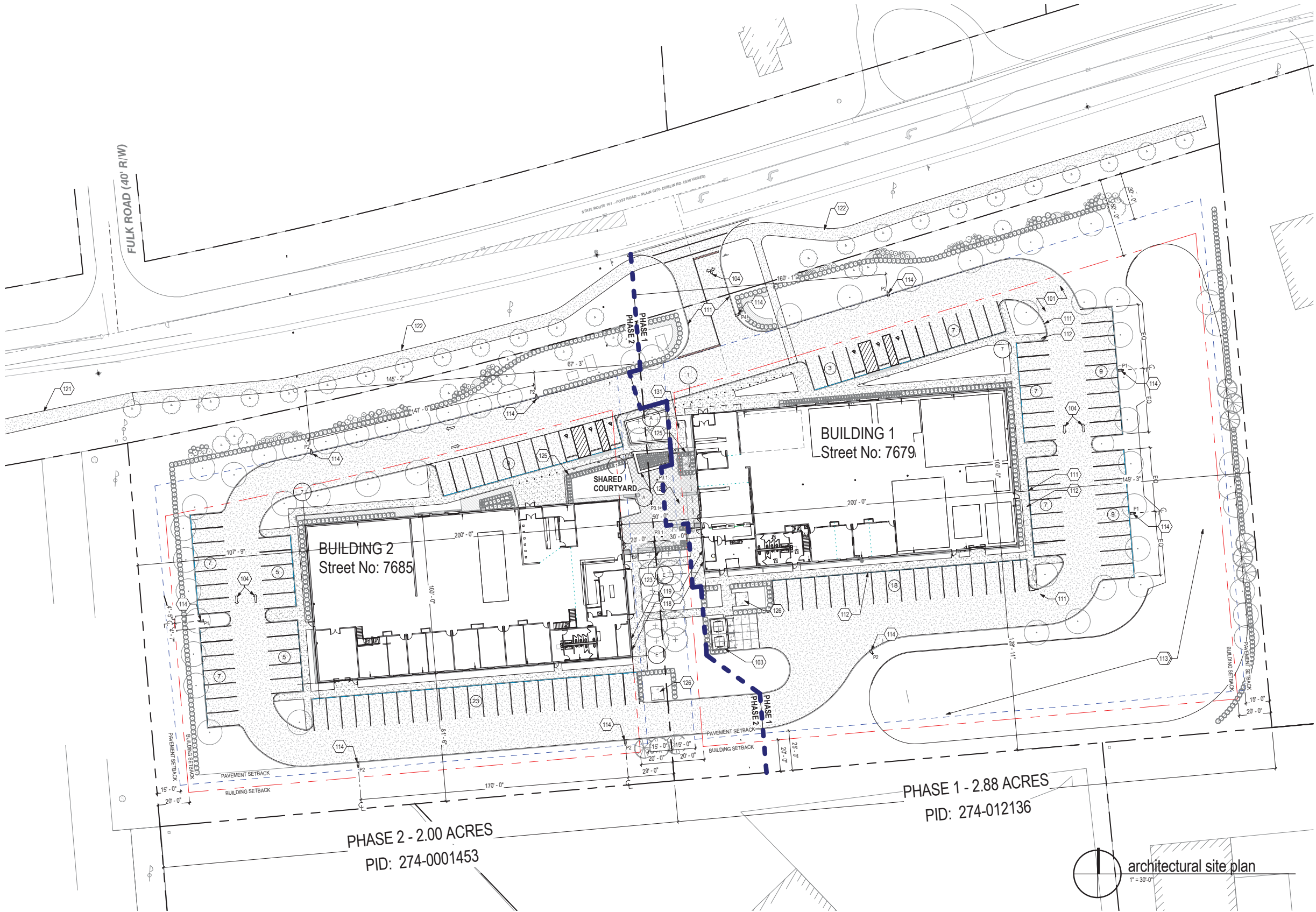
PARKING REQ'D - PHASE 2
WEST INNOVATION DISTRICT REQUIREMENTS
PER 153.040 - RECREATION USE:
20,000 SF / 150 = 134 SPACES
-OR-
533 OCCUPANTS (BLDG 1) = 533 / 3 = 178 SPACES MAXIMUM
CITY OF DUBLIN ZONING REQUIREMENTS
PER 153.211:
RECREATION, 1 per 250 sf: 20,000 SF / 250 = 80 SPACES MINIMUM
PROVIDED, PHASE 2: 59 SPACES

CODED NOTES - SITE PLAN

101 ASPHALT PAVEMENT - SEE CIVIL SHEETS
103 DUMPSTER ENCLOSURE
104 PAINTED DIRECTIONAL ARROW - SEE CIVIL SHEETS
111 CONCRETE CURB (TYP) - SEE CIVIL SHEETS
112 CONCRETE SIDEWALK - SEE CIVIL SHEETS
113 STORMWATER DETENTION BASIN - SEE CIVIL SHEETS
114 PARKING LOT LIGHT FIXTURE AND POLE - SEE CIVIL AND ELECTRICAL SHEETS
118 GAS PIPING AND METER - SEE PLUMBING SHEETS. PAINT TO MATCH ADJACENT WALL FINISH.
119 ELECTRIC SERVICE ENTRY AND METERS - SEE ELECTRICAL SHEETS. PAINT TO MATCH ADJACENT WALL FINISH.

CODED NOTES - SITE PLAN

121 EXISTING MULTI-USE PATH
122 MULTI-USE PATH EXTENSION - SEE CIVIL SHEETS
123 PAINTED WOOD FENCE AND GATE(S) MATCHING BASE OF BUILDING AND DUMPSTER ENCLOSURE (PHASE 2) - SEE DETAILS A1.2
124 COURTYARD AREA TO BE INSTALLED DURING PHASE 2 - SEE LANDSCAPE SHEETS FOR DETAILS
125 CABLE RAIL FENCE AND GATES (PHASE 2) - SEE LANDSCAPE SHEETS FOR DETAILS
126 ELECTRICAL TRANSFORMER(S) ON CONCRETE PAD - SEE ELECTRICAL AND CIVIL
131 BIKE RACKS - SEE LANDSCAPE SHEETS



775 Yard Street, Suite 325
Columbus, Ohio 43212
p 614 764 0407
f 614 764 0237
www.ma-architects.com

URBAN AIR ADVENTURE PARK

7679-7685 PLAIN CITY-DUBLIN ROAD | DUBLIN, OH 43064 |

STATUS:

PRELIMINARY
NOT FOR CONSTRUCTION

REVISION:

NO.	DESCRIPTION

PROJECT NUMBER:
2016.223

DRAWN BY:
AL

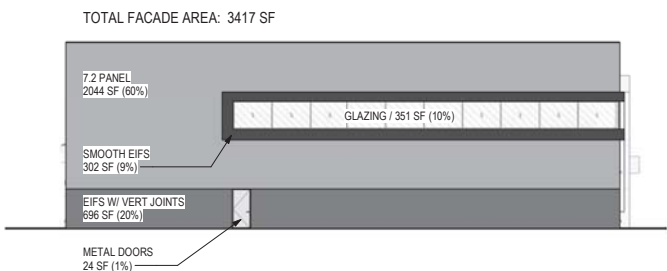
DATE:
23 MAR 2018

SHEET NAME:
ARCHITECTURAL
SITE PLAN

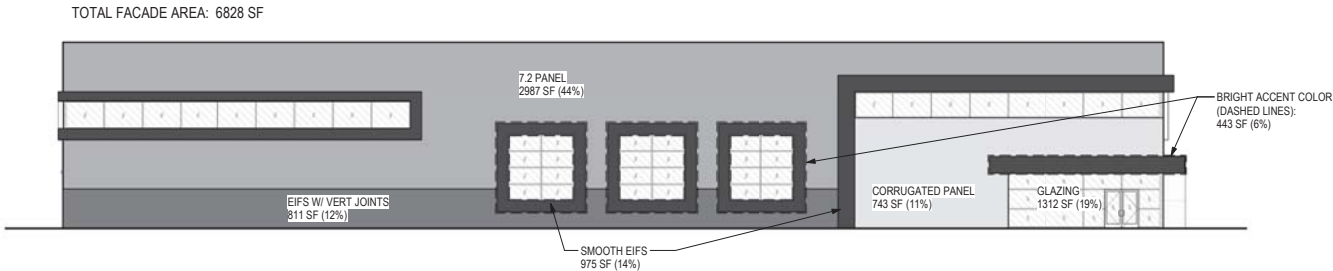
SHEET NUMBER:

A1.1

ma architects

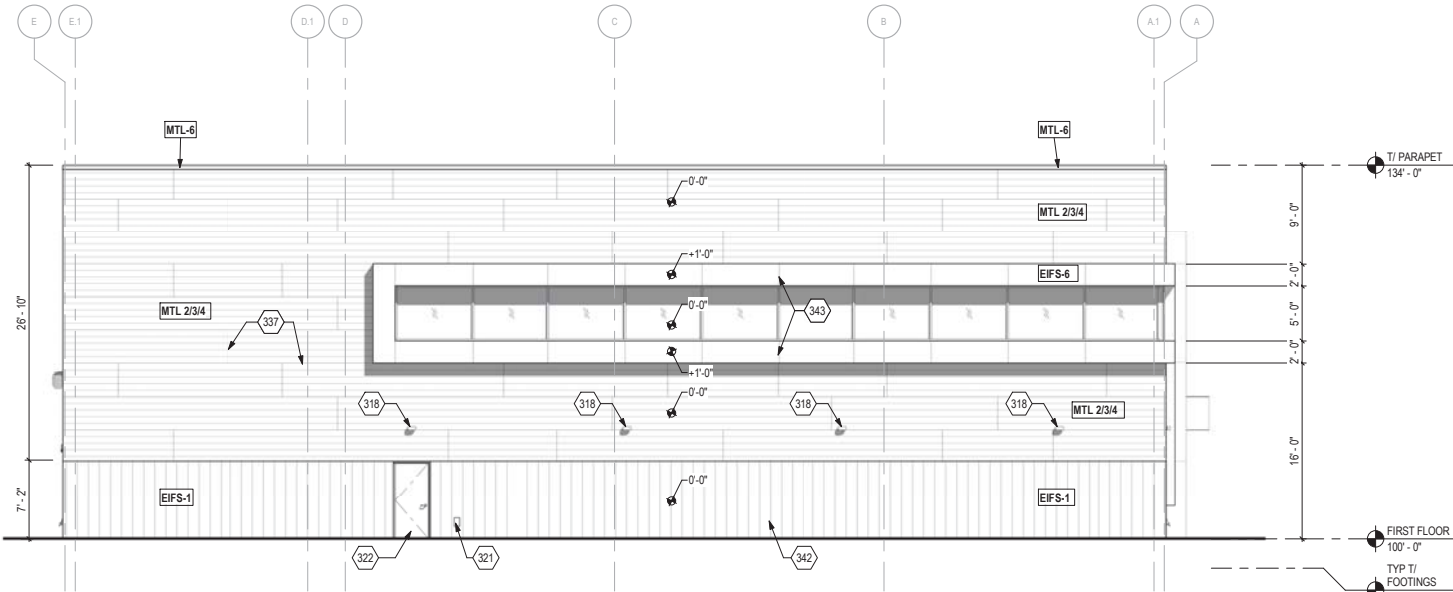


4 east elevation - material ratios
A3.1 1/16" = 1'-0"

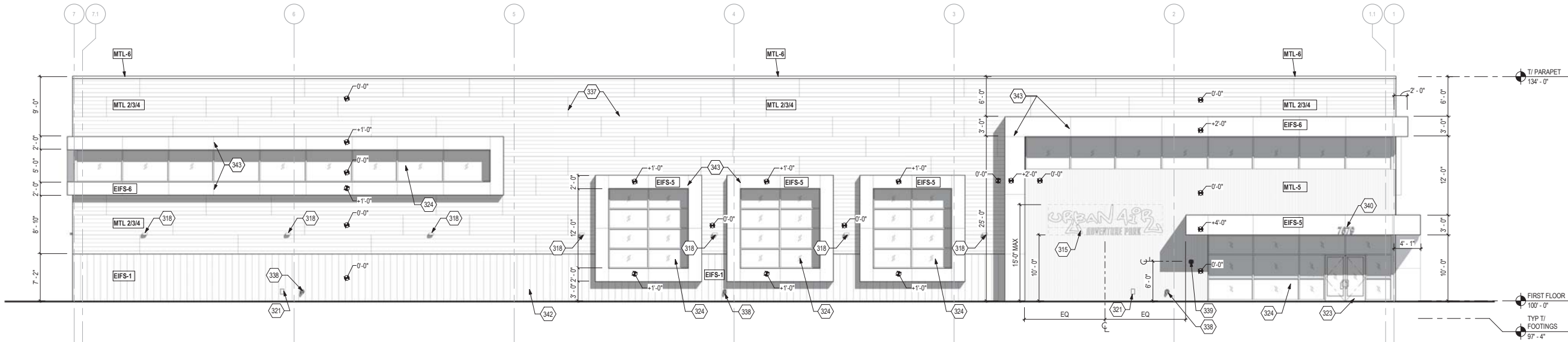


3 north elevation - material ratios
A3.1 1/16" = 1'-0"

EXTERIOR MATERIALS & FINISH SCHEDULE						
MARK	MATERIAL	MANUFACTURER	PRODUCT	COLOR	DIMENSION	ADDITIONAL INFORMATION
EXTERIOR INSULATION FINISH SYSTEM (EIFS)						
EIFS-1	EIFS WITH SMOOTH FINISH	DRYVIT	REFLECTIT	SLATE GRAY (MATCH PAC-CLAD COLOR)		BASE OF BUILDING
EIFS-2	EIFS WITH SMOOTH FINISH	DRYVIT	REFLECTIT	BONE WHITE (MATCH MTL-2)		SAME COLOR RATIO AS NOTE 1
EIFS-3	EIFS WITH SMOOTH FINISH	DRYVIT	REFLECTIT	CITYSCAPE (MATCH MTL-3)		SAME COLOR RATIO AS NOTE 1
EIFS-4	EIFS WITH SMOOTH FINISH	DRYVIT	REFLECTIT	STONE WHITE (MATCH MTL-4)		SAME COLOR RATIO AS NOTE 1
EIFS-5	EIFS WITH SMOOTH FINISH	DRYVIT	REFLECTIT	"URBAN AIR ORANGE"		
EIFS-6	EIFS WITH SMOOTH FINISH	DRYVIT	REFLECTIT	CHARCOAL (MATCH PAC-CLAD COLOR)		
EXTERIOR PAINT						
EPT-1	EXTERIOR DOORS AND FRAMES, MISC. ITEMS		SEE SPECIFICATIONS	SLATE GRAY		SEMI-GLOSS AT DOORS & FRAMES
PREFINISHED METAL						
ALS-1	ALUMINUM STOREFRONTS & ENTRANCES	KAWNEER OR EQUAL	SEE SPECIFICATIONS	CLEAR ANODIZED		
MTL-2	PREFINISHED METAL PANEL	PAC-CLAD	7.2 PANEL	BONE WHITE	36" TALL, NOM.	SEE NOTE 1.
MTL-3	PREFINISHED METAL PANEL	PAC-CLAD	7.2 PANEL	CITYSCAPE	36" TALL, NOM.	SEE NOTE 1.
MTL-4	PREFINISHED METAL PANEL	PAC-CLAD	7.2 PANEL	STONE WHITE	36" TALL, NOM.	SEE NOTE 1.
MTL-5	PREFINISHED METAL PANEL	PAC-CLAD	7/8" CORRUGATED	SILVER		
MTL-6	MANUFACTURED COPINGS	PAC-CLAD OR EQUAL	CITYSCAPE			
GENERAL NOTES:						
1. 7.2 PANELS SHALL BE INSTALLED IN RANDOM LENGTHS (BETWEEN 10' AND 25', IN 5' INCREMENTS) AND PATTERN. REFER TO COLOR RENDERINGS. PERCENTAGE OF MTL-2, MTL-3 AND MTL-4 IS AS FOLLOWS						
40% MTL-2						
20% MTL-3						
40% MTL-4						



2 east elevation (side)
A3.1 1/8" = 1'-0"



1 north elevation (front)
A3.1 1/8" = 1'-0"

CODED NOTES - ELEVATIONS

- 315 SIGNAGE BY OWNER. PROVIDE 5/8" F.R.T.W. PLYWOOD SHEATHING IN LIEU OF GLASS FACED SHEATHING BEHIND.
- 318 WALL MOUNTED LIGHT FIXTURE. SEE ELECTRICAL SHEETS
- 319 GAS METER & PIPING - PAINT (EPT-1). SEE PLUMBING SHEETS
- 321 FROST PROOF WALL HYDRANT - SEE PLUMBING SHEETS.
- 322 HOLLOW METAL DOOR AND FRAME. PAINT (EPT-1)
- 323 MEDIUM STYLE ALUMINUM STOREFRONT ENTRANCE DOOR(S) (ALS-1) WITH 1" INSULATED GLASS. SEE SHEET A3.1.
- 324 2" X 4 1/2" ALUMINUM STOREFRONT SYSTEM WITH 1" INSULATED GLASS (ALS-1)
- 334 KITCHEN HOOD EXHAUST VENT (EPT-1)
- 335 INSULATED OVERHEAD DOOR (EPT-1)
- 337 PANEL JOINT, TYP. JOINTS CONTINUE TO SOFFIT AND AROUND CORNER, UNLESS NOTED.
- 338 DOWNSPOUT NOZZLE - SEE PLUMBING SHEETS
- 339 RECESSED EMERGENCY KEY CABINET (KNOX BOX)
- 340 ADDRESS SIGNAGE (SURFACE MOUNT CHANNEL LETTERS, BY OWNER SIGNAGE VENDOR)
- 342 EIFS REVEAL JOINTS, TYP.
- 343 EIFS REVEAL JOINTS. JOINTS CONTINUE TO SOFFIT AND/OR AROUND CORNER, TYP.



775 Yard Street, Suite 325
Columbus, Ohio 43212
p 614 764 0407
f 614 764 0237
www.ma-architects.com

URBAN AIR - BUILDING 1

7679 PLAIN CITY-DUBLIN ROAD | DUBLIN, OHIO 43016 |

STATUS:

PRELIMINARY
NOT FOR CONSTRUCTION

REVISION:

NO.	DESCRIPTION

PROJECT NUMBER:

2016.223

DRAWN BY:

AL, CG

DATE:

23 MAR 2018

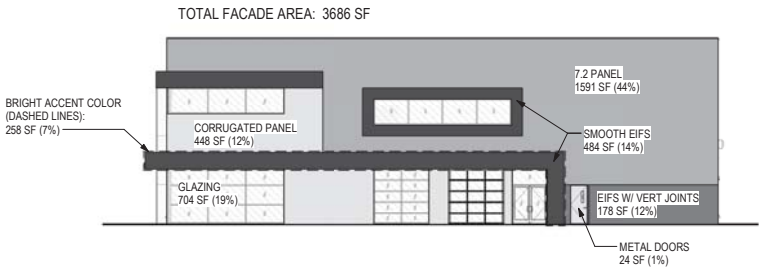
SHEET NAME:

EXTERIOR
ELEVATIONS

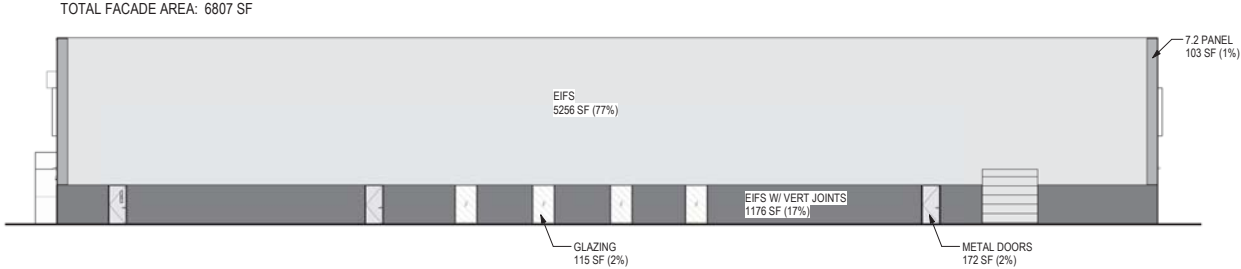
SHEET NUMBER:

A3.1

ma architects

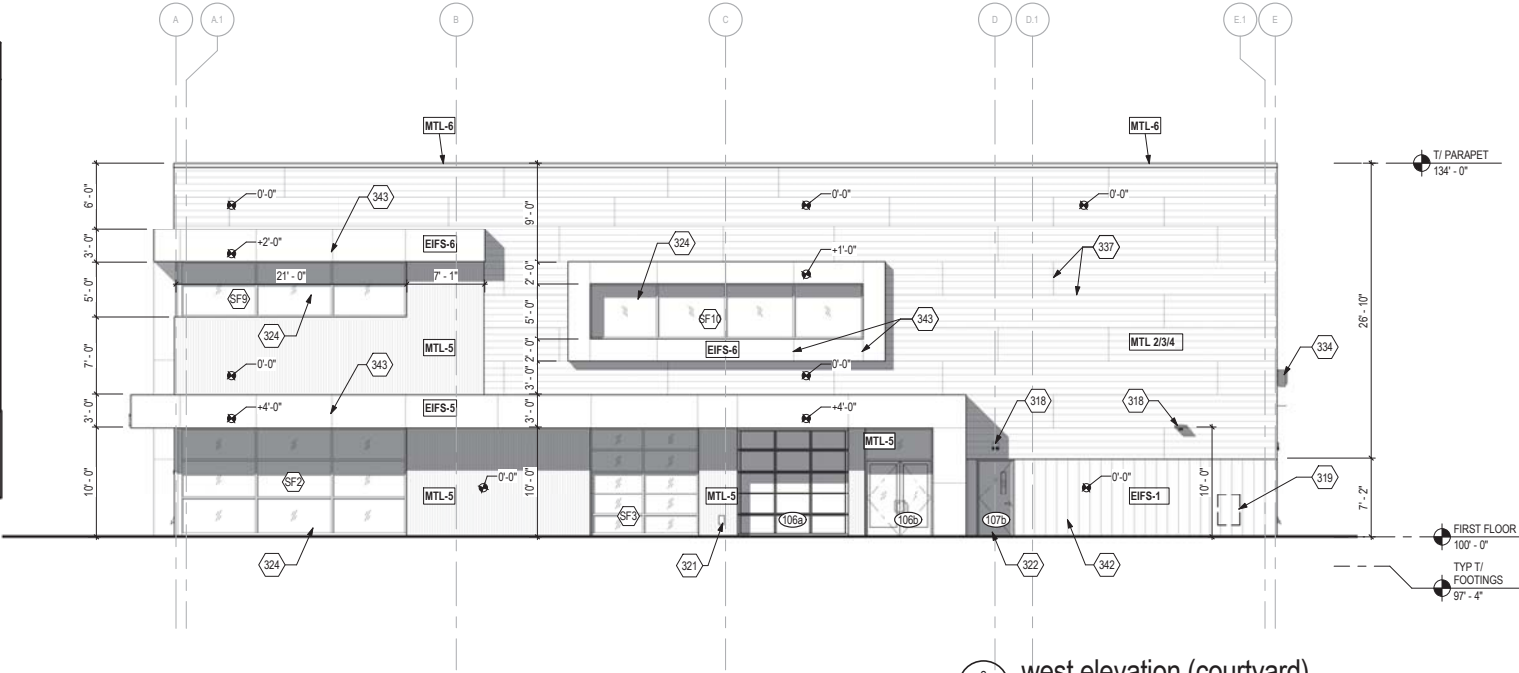


4 west elevation - material ratios
A3.2 1/16" = 1'-0"

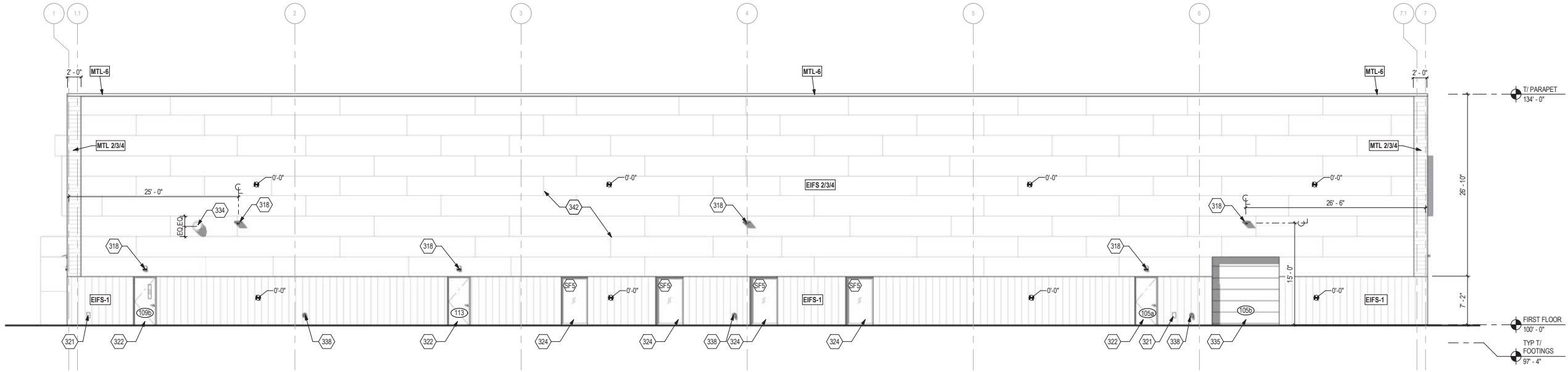


3 south elevation - material ratios
A3.2 1/16" = 1'-0"

EXTERIOR MATERIALS & FINISH SCHEDULE						
MARK	MATERIAL	MANUFACTURER	PRODUCT	COLOR	DIMENSION	ADDITIONAL INFORMATION
EXTERIOR INSULATION FINISH SYSTEM (EIFS)						
EIFS-1	EIFS WITH SMOOTH FINISH	DRYVIT	REFLECTIT	SLATE GRAY (MATCH PAC-CLAD COLOR)		BASE OF BUILDING
EIFS-2	EIFS WITH SMOOTH FINISH	DRYVIT	REFLECTIT	BONE WHITE (MATCH MTL-2)		SAME COLOR RATIO AS NOTE 1
EIFS-3	EIFS WITH SMOOTH FINISH	DRYVIT	REFLECTIT	CITYSCAPE (MATCH MTL-3)		SAME COLOR RATIO AS NOTE 1
EIFS-4	EIFS WITH SMOOTH FINISH	DRYVIT	REFLECTIT	STONE WHITE (MATCH MTL-4)		SAME COLOR RATIO AS NOTE 1
EIFS-5	EIFS WITH SMOOTH FINISH	DRYVIT	REFLECTIT	"URBAN AIR ORANGE"		
EIFS-6	EIFS WITH SMOOTH FINISH	DRYVIT	REFLECTIT	CHARCOAL (MATCH PAC-CLAD COLOR)		
EXTERIOR PAINT						
EPT-1	EXTERIOR DOORS AND FRAMES, MISC. ITEMS		SEE SPECIFICATIONS	SLATE GRAY		SEMI-GLOSS AT DOORS & FRAMES
PREFINISHED METAL						
MTL-1	ALUMINUM STOREFRONTS & ENTRANCES	KAWNEER OR EQUAL	SEE SPECIFICATIONS	CLEAR ANODIZED		
MTL-2	PREFINISHED METAL PANEL	PAC-CLAD	7.2 PANEL	BONE WHITE	36" TALL, NOM.	SEE NOTE 1.
MTL-3	PREFINISHED METAL PANEL	PAC-CLAD	7.2 PANEL	CITYSCAPE	36" TALL, NOM.	SEE NOTE 1.
MTL-4	PREFINISHED METAL PANEL	PAC-CLAD	7.2 PANEL	STONE WHITE	36" TALL, NOM.	SEE NOTE 1.
MTL-5	PREFINISHED METAL PANEL	PAC-CLAD	7/8" CORRUGATED	SILVER		
MTL-6	MANUFACTURED COPINGS	PAC-CLAD OR EQUAL	CITYSCAPE			
GENERAL NOTES:						
1. 7.2 PANELS SHALL BE INSTALLED IN RANDOM LENGTHS (BETWEEN 10' AND 25', IN 5' INCREMENTS) AND PATTERN. REFER TO COLOR RENDERINGS. PERCENTAGE OF MTL-2, MTL-3 AND MTL-4 IS AS FOLLOWS						
40% MTL-2						
20% MTL-3						
40% MTL-4						



2 west elevation (courtyard)
A3.2 1/8" = 1'-0"



1 south elevation (rear)
A3.2 1/8" = 1'-0"

CODED NOTES - ELEVATIONS

- 315 SIGNAGE BY OWNER. PROVIDE 5/8" F.R.T.W. PLYWOOD SHEATHING IN LIEU OF GLASS FACED SHEATHING BEHIND.
- 318 WALL MOUNTED LIGHT FIXTURE. SEE ELECTRICAL SHEETS
- 319 GAS METER & PIPING - PAINT (EPT-1). SEE PLUMBING SHEETS
- 321 FROST PROOF WALL HYDRANT - SEE PLUMBING SHEETS.
- 322 HOLLOW METAL DOOR AND FRAME. PAINT (EPT-1)
- 323 MEDIUM STYLE ALUMINUM STOREFRONT ENTRANCE DOOR(S) (ALS-1) WITH 1" INSULATED GLASS. SEE SHEET AS.1.
- 324 2" X 4 1/2" ALUMINUM STOREFRONT SYSTEM WITH 1" INSULATED GLASS (ALS-1)
- 334 KITCHEN HOOD EXHAUST VENT (EPT-1)
- 335 INSULATED OVERHEAD DOOR (EPT-1)
- 337 PANEL JOINT, TYP. JOINTS CONTINUE TO SOFFIT AND AROUND CORNER, UNLESS NOTED.
- 338 DOWNSPOUT NOZZLE - SEE PLUMBING SHEETS
- 339 RECESSED EMERGENCY KEY CABINET (KNOX BOX)
- 340 ADDRESS SIGNAGE (SURFACE MOUNT CHANNEL LETTERS, BY OWNER SIGNAGE VENDOR)
- 342 EIFS REVEAL JOINTS, TYP.
- 343 EIFS REVEAL JOINTS. JOINTS CONTINUE TO SOFFIT AND/OR AROUND CORNER, TYP.



775 Yard Street, Suite 325
Columbus, Ohio 43212
p 614 764 0407
f 614 764 0237
www.ma-architects.com

URBAN AIR - BUILDING 1

7679 PLAIN CITY-DUBLIN ROAD | DUBLIN, OHIO 43016 |

STATUS:

PRELIMINARY
NOT FOR CONSTRUCTION

REVISION:

no	Date	Year	VE

PROJECT NUMBER:

2016.223

DRAWN BY:

AL, CG

DATE:

23 MAR 2018

SHEET NAME:

EXTERIOR
ELEVATIONS

SHEET NUMBER:

A3.2

ma architects

CODED NOTES - ELEVATIONS

- 315
- SIGNAGE BY OWNER. PROVIDE 5/8" F.R.T.W. PLYWOOD SHEATHING IN LIEU OF GLASS FACED SHEATHING BEHIND.
- 322
- HOLLOW METAL DOOR AND FRAME. PAINT (EPT-1)
- 324
- 2" X 4 1/2" ALUMINUM STOREFRONT SYSTEM WITH 1" INSULATED GLASS (ALS-1)
- 336
- ALUMINUM OVERHEAD DOOR WITH 1" INSULATED GLAZING (ALS-1)



775 Yard Street, Suite 325
Columbus, Ohio 43212
p 614 764 0407
f 614 764 0237
www.ma-architects.com

URBAN AIR - BUILDING 2

7685 PLAIN CITY-DUBLIN ROAD | DUBLIN, OHIO 43064 |

STATUS:

PRELIMINARY
NOT FOR CONSTRUCTION

REVISION:

PROJECT NUMBER:

2016.223

DRAWN BY:

CG, AL

DATE:

23 MARCH 2018

SHEET NAME:

EXTERIOR
ELEVATIONS

SHEET NUMBER:

A3.1

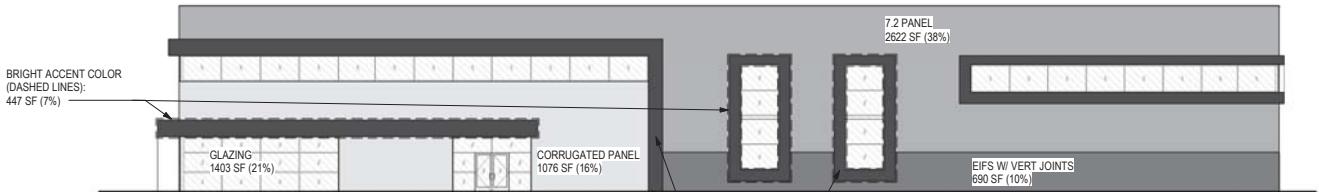
ma architects

TOTAL FACADE AREA: 3686 SF



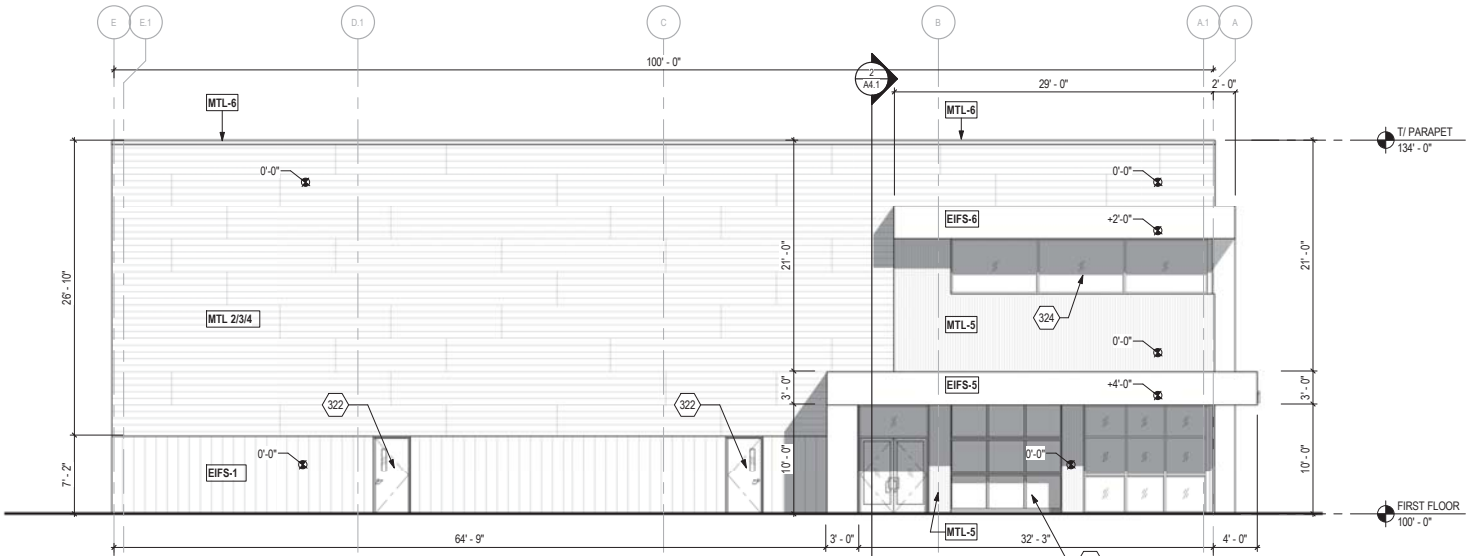
4 east elevation
A3.1 1/16" = 1'-0"

TOTAL FACADE AREA: 6828 SF

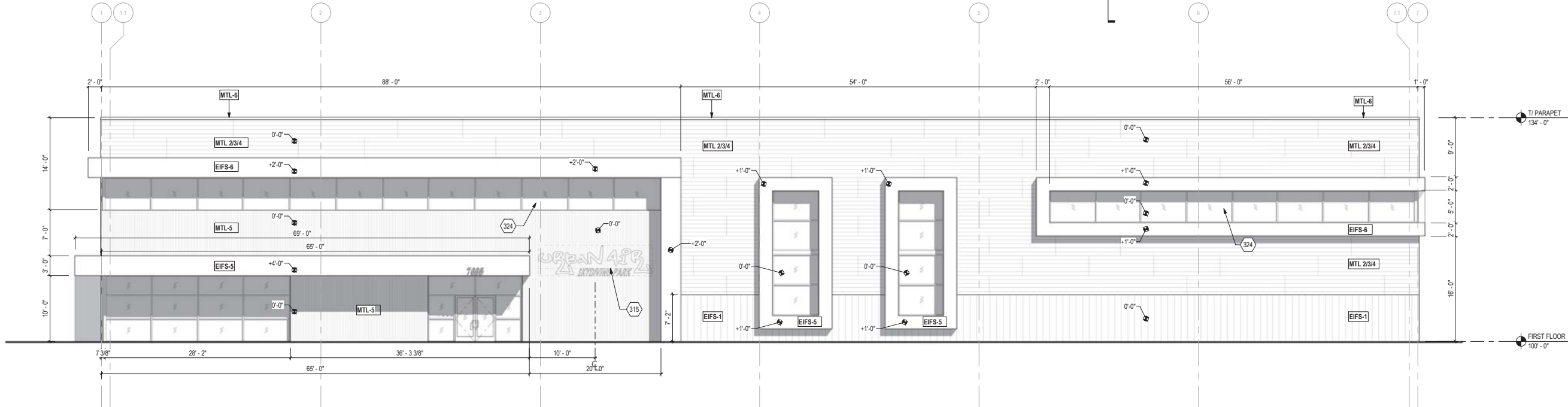


3 north elevation
A3.1 1/16" = 1'-0"

EXTERIOR MATERIALS & FINISH SCHEDULE						
MARK	MATERIAL	MANUFACTURER	PRODUCT	COLOR	DIMENSION	ADDITIONAL INFORMATION
EXTERIOR INSULATION FINISH SYSTEM (EIFS)						
EIFS-1	EIFS WITH SMOOTH FINISH	DRYVIT	REFLECTIT	SLATE GRAY (MATCH PAC-CLAD COLOR)		BASE OF BUILDING
EIFS-2	EIFS WITH SMOOTH FINISH	DRYVIT	REFLECTIT	BONE WHITE (MATCH MTL-2)		SAME COLOR RATIO AS NOTE 1
EIFS-3	EIFS WITH SMOOTH FINISH	DRYVIT	REFLECTIT	CITYSCAPE (MATCH MTL-3)		SAME COLOR RATIO AS NOTE 1
EIFS-4	EIFS WITH SMOOTH FINISH	DRYVIT	REFLECTIT	STONE WHITE (MATCH MTL-4)		SAME COLOR RATIO AS NOTE 1
EIFS-5	EIFS WITH SMOOTH FINISH	DRYVIT	REFLECTIT	"URBAN AIR ORANGE"		
EIFS-6	EIFS WITH SMOOTH FINISH	DRYVIT	REFLECTIT	CHARCOAL (MATCH PAC-CLAD COLOR)		
EXTERIOR PAINT						
EPT-1	EXTERIOR DOORS AND FRAMES, MISC. ITEMS		SEE SPECIFICATIONS	SLATE GRAY		SEMI-GLOSS AT DOORS & FRAMES
PREFINISHED METAL						
ALS-1	ALUMINUM STOREFRONTS & ENTRANCES	KAWNEER OR EQUAL	SEE SPECIFICATIONS	CLEAR ANODIZED		
MTL-2	PREFINISHED METAL PANEL	PAC-CLAD	7.2 PANEL	BONE WHITE	36" TALL, NOM.	SEE NOTE 1.
MTL-3	PREFINISHED METAL PANEL	PAC-CLAD	7.2 PANEL	CITYSCAPE	36" TALL, NOM.	SEE NOTE 1.
MTL-4	PREFINISHED METAL PANEL	PAC-CLAD	7.2 PANEL	STONE WHITE	36" TALL, NOM.	SEE NOTE 1.
MTL-5	PREFINISHED METAL PANEL	PAC-CLAD	7/8" CORRUGATED	SILVER		
MTL-6	MANUFACTURED COPINGS	PAC-CLAD OR EQUAL	CITYSCAPE			
GENERAL NOTES:						
1. 7.2 PANELS SHALL BE INSTALLED IN RANDOM LENGTHS AND PATTERN. PERCENTAGE OF MTL-2, MTL-3 AND MTL-4 SHALL BE: 20% MTL-2 20% MTL-3 40% MTL-4						



2 east elevation (courtyard)
A3.1 1/8" = 1'-0"



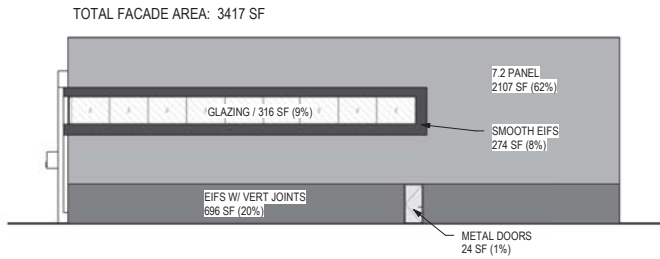
1 north (front) elevation
A3.1 1/8" = 1'-0"

CODED NOTES - ELEVATIONS

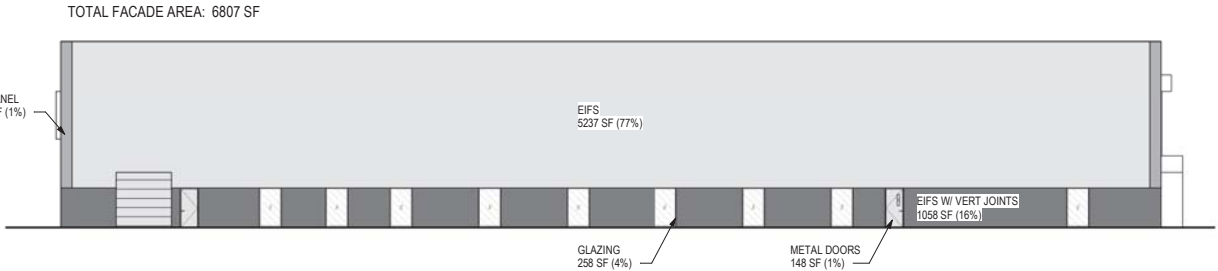
- 322 HOLLOW METAL DOOR AND FRAME, PAINT (EPT-1)
324 2" X 4 1/2" ALUMINUM STOREFRONT SYSTEM WITH 1" INSULATED GLASS (ALS-1)
335 INSULATED OVERHEAD DOOR (EPT-1)



775 Yard Street, Suite 325
Columbus, Ohio 43212
p 614 764 0407
f 614 764 0237
www.ma-architects.com

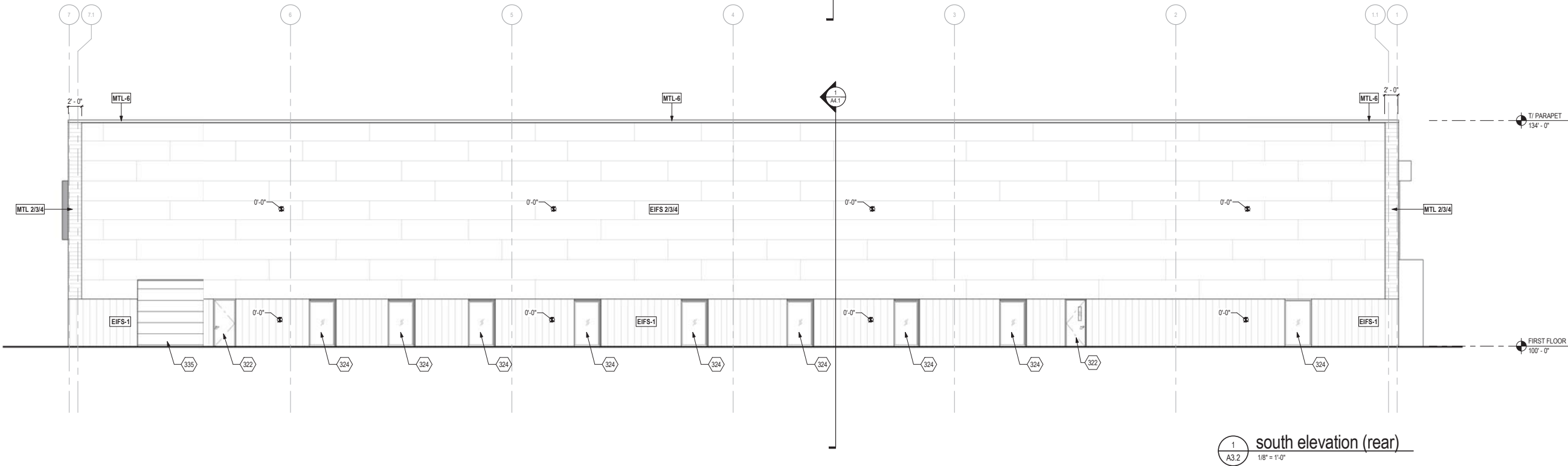
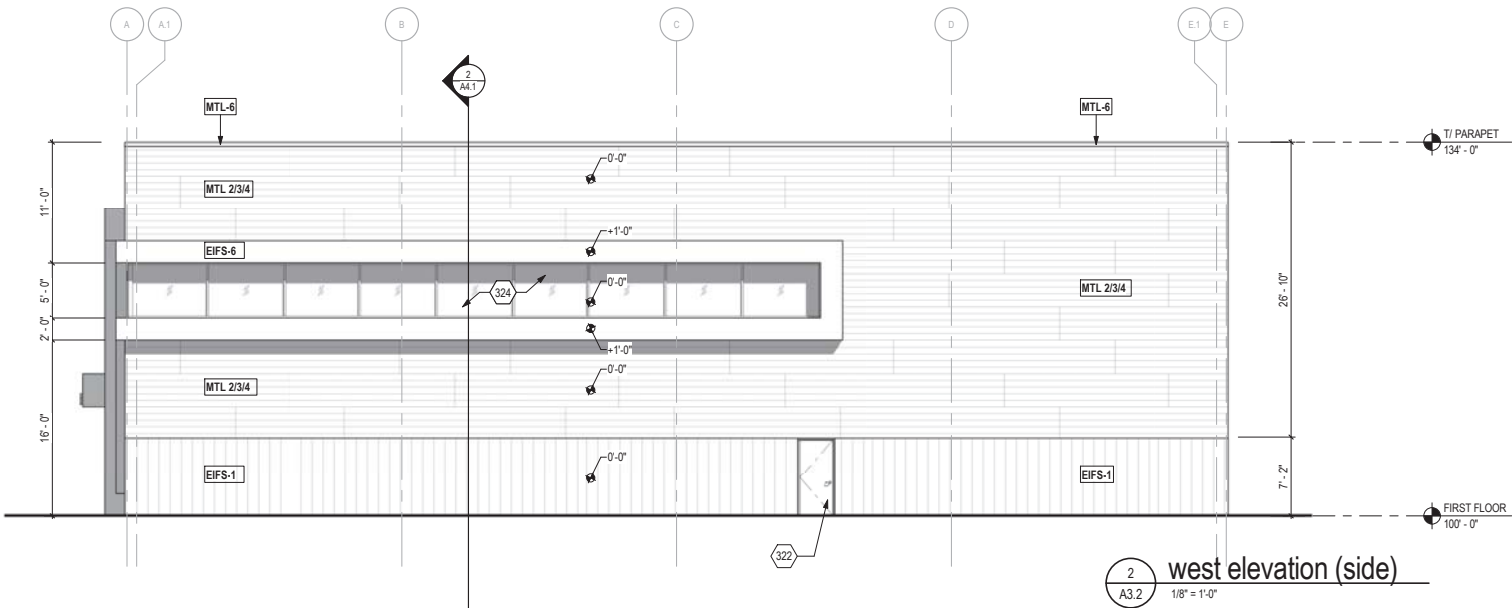


4 west elevation - material ratios
A3.2 1/16" = 1'-0"



3 south elevation - material ratios
A3.2 1/16" = 1'-0"

EXTERIOR MATERIALS & FINISH SCHEDULE					
MARK	MATERIAL	MANUFACTURER	PRODUCT	COLOR	ADDITIONAL INFORMATION
EXTERIOR INSULATION FINISH SYSTEM (EIFS)					
EIFS-1	EIFS WITH SMOOTH FINISH	DRYVIT	REFLECTIT	SLATE GRAY (MATCH PAC-CLAD COLOR)	BASE OF BUILDING
EIFS-2	EIFS WITH SMOOTH FINISH	DRYVIT	REFLECTIT	BONE WHITE (MATCH MTL-2)	SAME COLOR RATIO AS NOTE 1
EIFS-3	EIFS WITH SMOOTH FINISH	DRYVIT	REFLECTIT	CITYSCAPE (MATCH MTL-3)	SAME COLOR RATIO AS NOTE 1
EIFS-4	EIFS WITH SMOOTH FINISH	DRYVIT	REFLECTIT	STONE WHITE (MATCH MTL-4)	SAME COLOR RATIO AS NOTE 1
EIFS-5	EIFS WITH SMOOTH FINISH	DRYVIT	REFLECTIT	"URBAN AIR ORANGE"	
EIFS-6	EIFS WITH SMOOTH FINISH	DRYVIT	REFLECTIT	CHARCOAL (MATCH PAC-CLAD COLOR)	
EXTERIOR PAINT					
EPT-1	EXTERIOR DOORS AND FRAMES, MISC. ITEMS		SEE SPECIFICATIONS	SLATE GRAY	SEMI-GLOSS AT DOORS & FRAMES
PREFINISHED METAL					
ALS-1	ALUMINUM STOREFRONTS & ENTRANCES	KAWNEER OR EQUAL	SEE SPECIFICATIONS	CLEAR ANODIZED	
MTL-2	PREFINISHED METAL PANEL	PAC-CLAD	7.2 PANEL	BONE WHITE	36" TALL, NOM. SEE NOTE 1.
MTL-3	PREFINISHED METAL PANEL	PAC-CLAD	7.2 PANEL	CITYSCAPE	36" TALL, NOM. SEE NOTE 1.
MTL-4	PREFINISHED METAL PANEL	PAC-CLAD	7.2 PANEL	STONE WHITE	36" TALL, NOM. SEE NOTE 1.
MTL-5	PREFINISHED METAL PANEL	PAC-CLAD	7/8" CORRUGATED	SILVER	
MTL-6	MANUFACTURED COPINGS	PAC-CLAD OR EQUAL	CITYSCAPE		
GENERAL NOTES: 1. 7.2 PANELS SHALL BE INSTALLED IN RANDOM LENGTHS AND PATTERN. PERCENTAGE OF MTL-2, MTL-3 AND MTL-4 SHALL BE: 20% MTL-2 20% MTL-3 40% MTL-4					



URBAN AIR - BUILDING 2

7685 PLAIN CITY-DUBLIN ROAD | DUBLIN, OHIO 43064 |

STATUS:

PRELIMINARY
NOT FOR CONSTRUCTION

REVISION:

PROJECT NUMBER:

2016.223

DRAWN BY:

CG, AL

DATE:

23 MARCH 2018

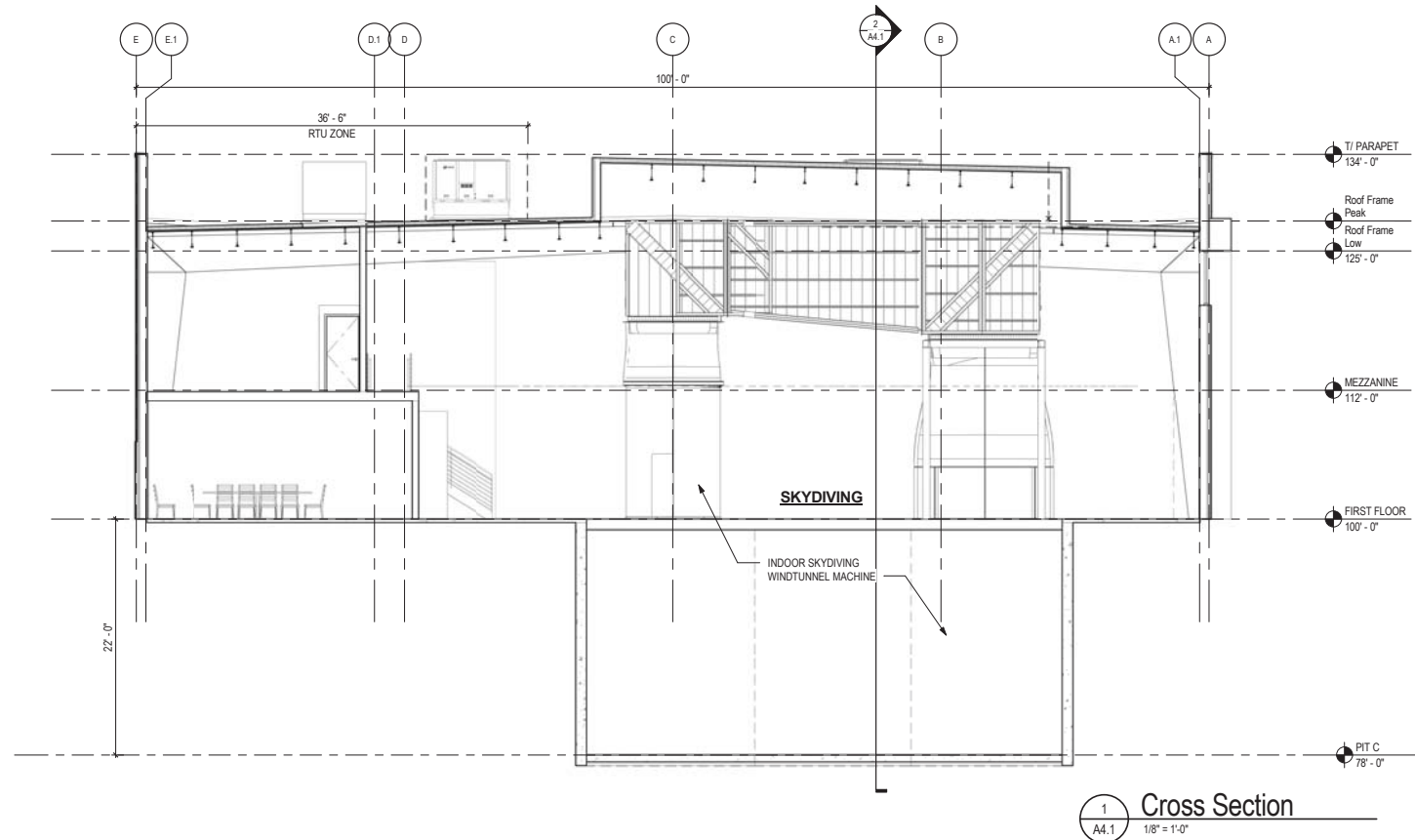
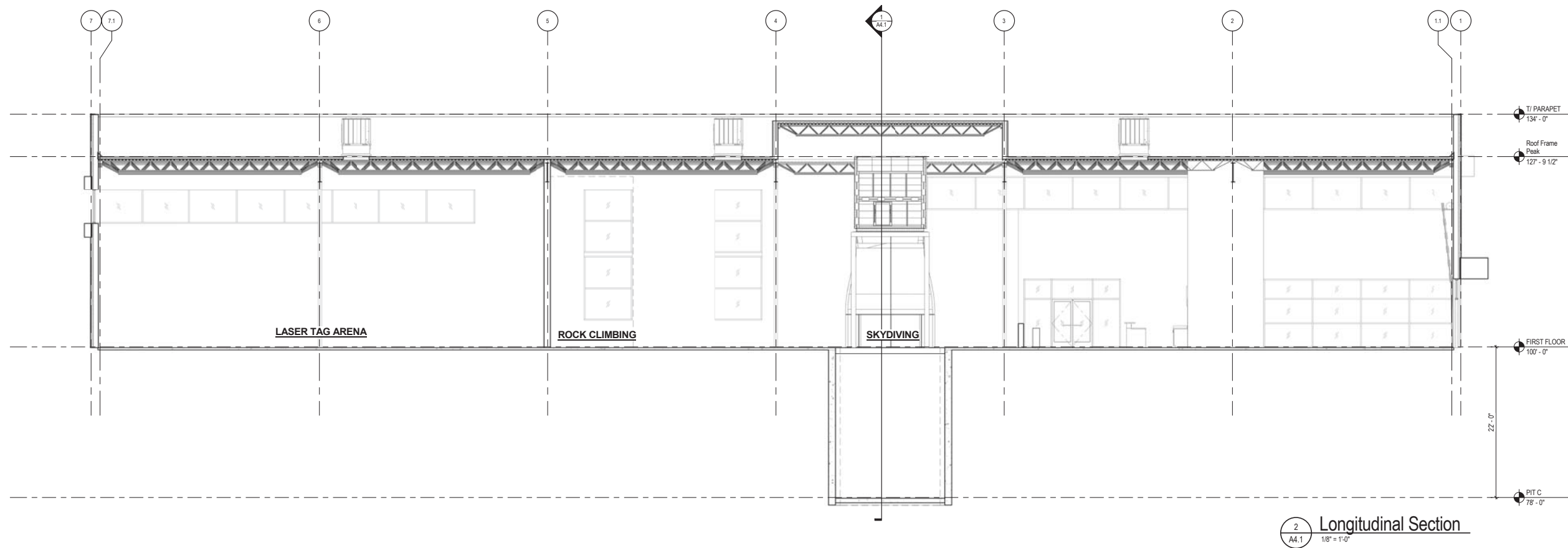
SHEET NAME:

EXTERIOR
ELEVATIONS

SHEET NUMBER:

A3.2

ma architects



775 Yard Street, Suite 325
Columbus, Ohio 43212
p 614 764 0407
f 614 764 0237
www.ma-architects.com

URBAN AIR - BUILDING 2

7685 PLAIN CITY-DUBLIN ROAD | DUBLIN, OHIO 43064 |

STATUS:

PRELIMINARY
NOT FOR CONSTRUCTION

REVISION:

PROJECT NUMBER:

2016.223

DRAWN BY:

AL

DATE:

23 MARCH 2018

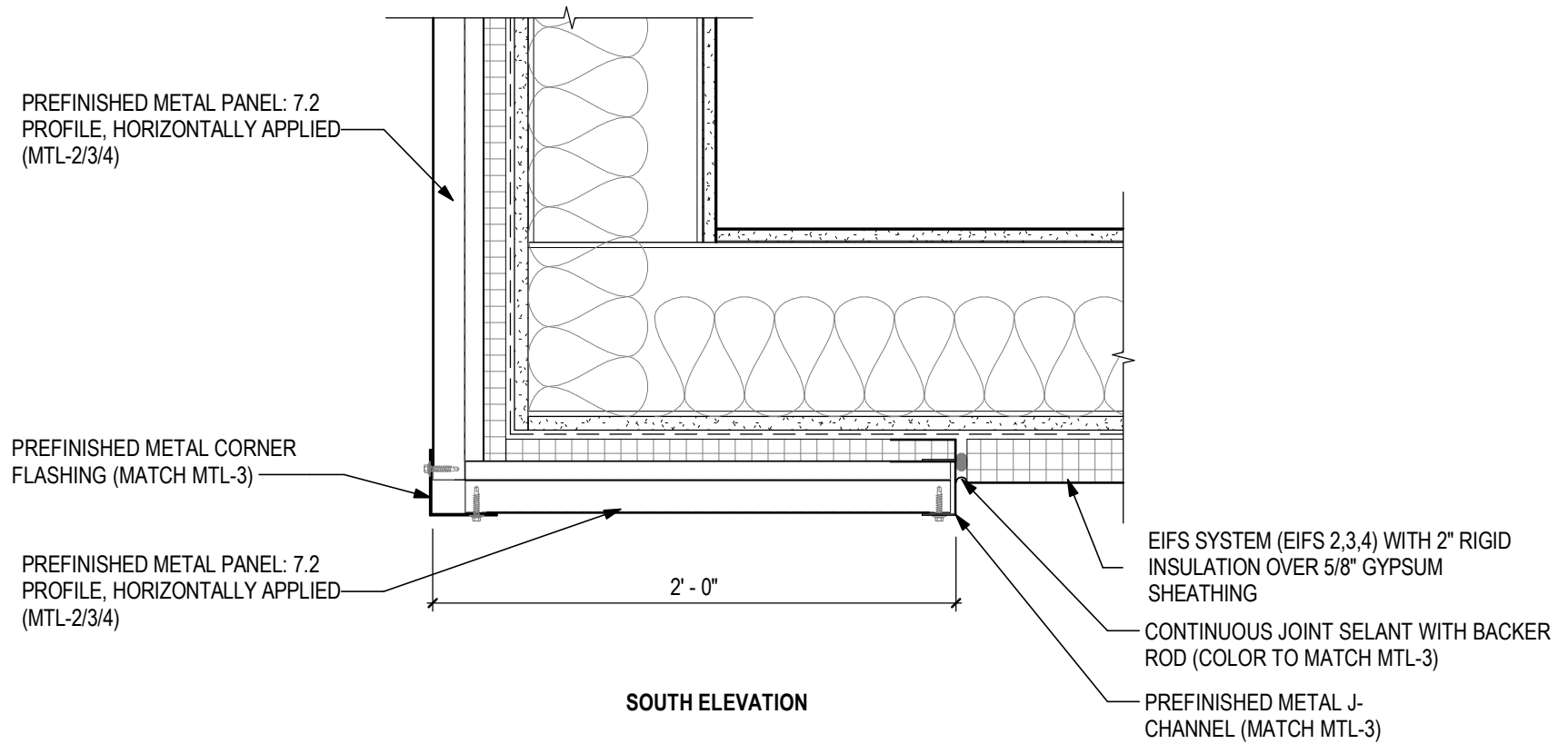
SHEET NAME:

BUILDING SECTIONS

SHEET NUMBER:

A4.1

ma architects



Mtl 7.2 Panel to EIFS - Plan Detail

1 1/2" = 1'-0"