

Todd Mitchell
Innerface Architectural Signage, Inc.
November 17, 2017

Signage Rationale Report

This letter is in regards to comments and recommendations related to the proposed signage and wayfinding package developed for TH and the City of Dublin. The rationale provided below addresses the sign types/locations that TH feels is necessary for their patient and/or visitors to access emergency and acute care.

Location 4: AMBULANCE - This sign is not required by any governing body but is necessary from a wayfinding standpoint. There will be different EMS vehicles providing emergency transport and knowing the correct drop off location for patients needing acute care is critical to overall patient outcomes. It is always recommended to have an internally lit entry sign for EMS staff to enter.

Locations 3 & 5: Directional Signs - The “blank” space is recommended in the event additional services are added in the future, it eliminates the owner from having to replace the entire sign. Regarding replacing the posts with a brick/masonry base, this is not recommended as it will block all visibility of traffic flow and the site triangles.

The proposed signage included follows all Americans with Disabilities Act (ADA) and Joint Commission recommendations for signage.

Exterior Signage

Draft (1) 7.31.17

Draft (2) 8.3.17

Draft (3) 8.7.17

Draft (4) 11.17.17

Draft (5) 11.21.17

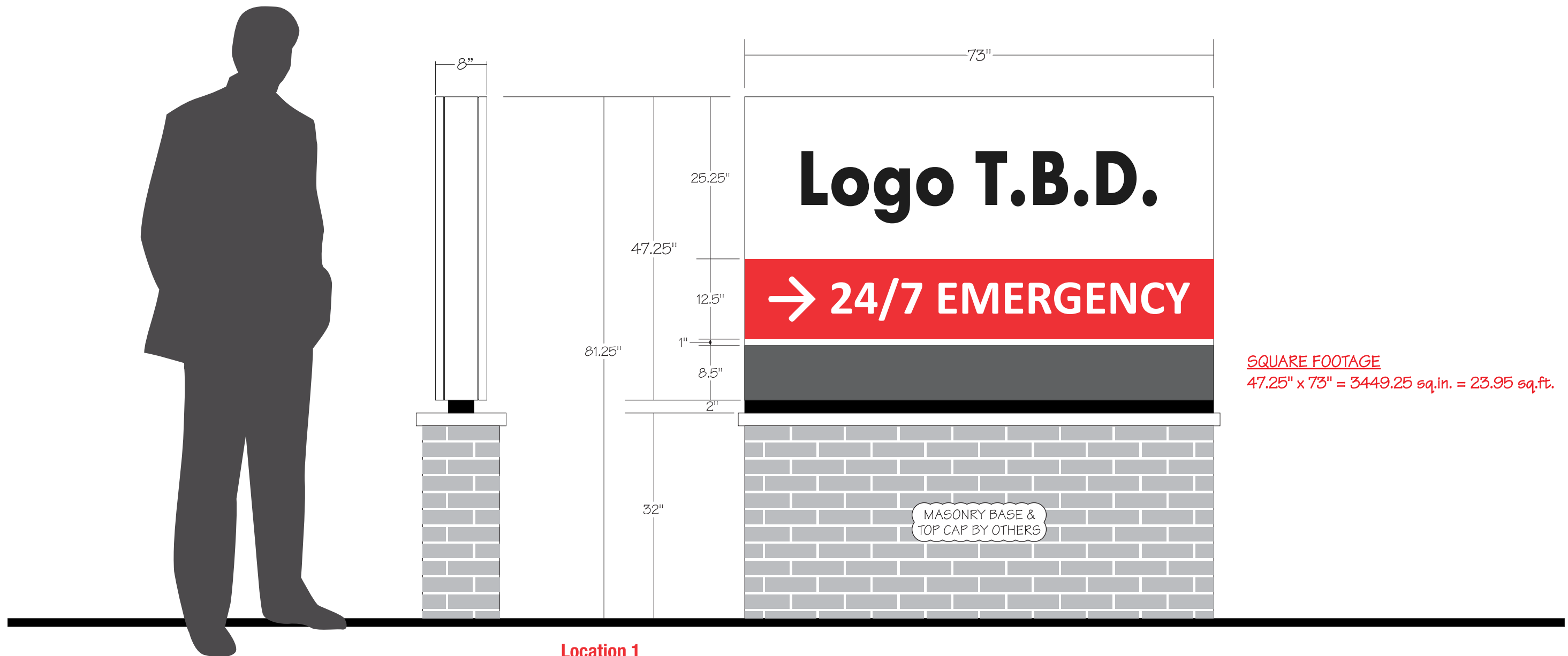
ECHO Neighborhood Hospital

Dublin, OH



ARCHITECTURAL
SIGNAGE, INC.

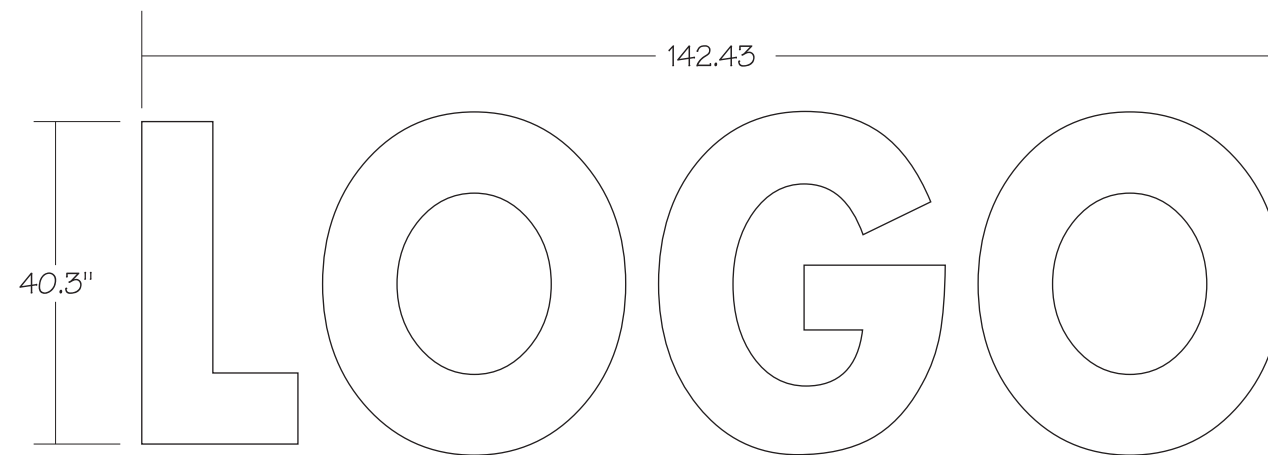
5849 PEACHTREE ROAD
ATLANTA, GEORGIA 30341
T 770 921 5566
TF 800 445 4796
F 770 279 1327
INNERFACESIGN.COM



Location 1

MAIN ENTRANCE MONUMENT - Double Sided - LED Illuminated

- 47.25" x 73" x 8" deep fabricated aluminum hingebody cabinet w/ retro hingebody extrusion and bleed retainers
- 2" base reveal
- Faces are White translucent fiberglass w/ surface applied translucent vinyl graphics
- 8.5" x 73" x 1/8" painted aluminum panel applied to bottom of face
- Masonry base/cap by others
- Brick color is Dove Gray

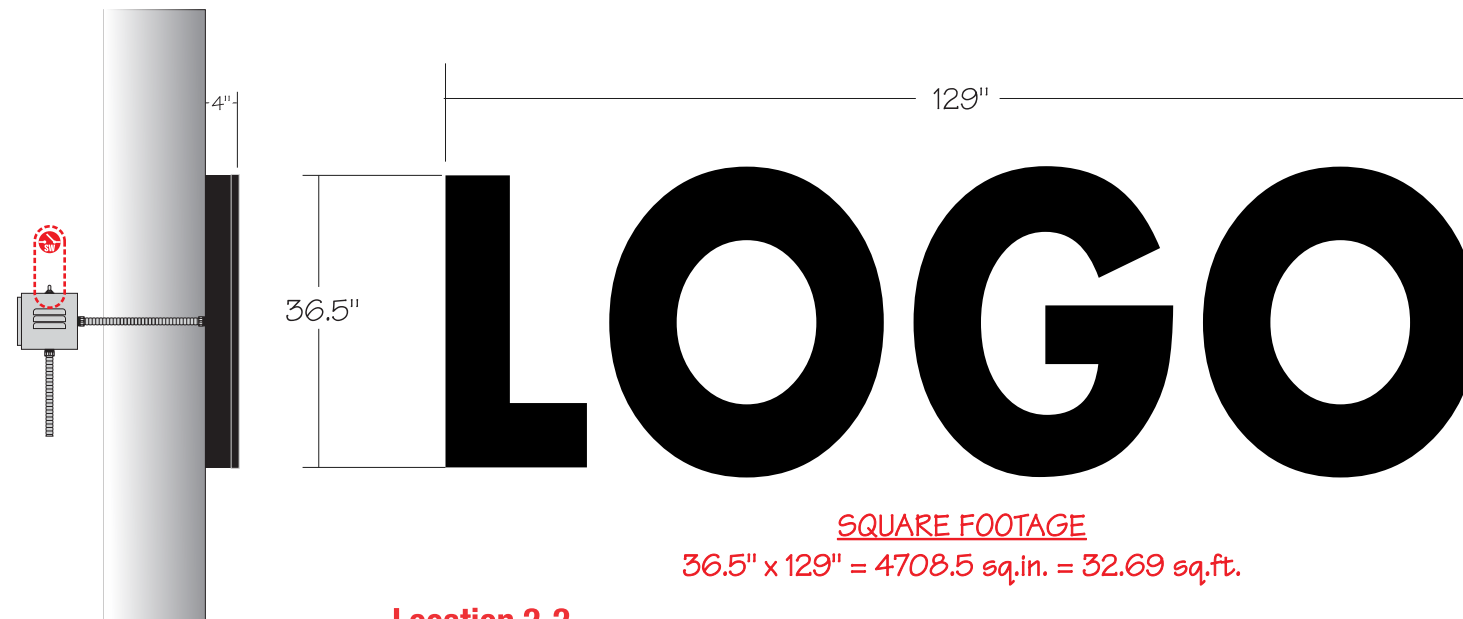


SQUARE FOOTAGE - OPTIONAL
 $40.3" \times 142.43" = 5739.9 \text{ sq.in.} = 39.86 \text{ sq.ft.}$

Location 2.1

CHANNEL LETTERS - Facelit - LED Illuminated

- 40.3" x 4" deep facelit channel letters base-mounted to East elevation canopy
- Internal illumination by White LED module and remote mounted power supplies
- Face and return colors TBD

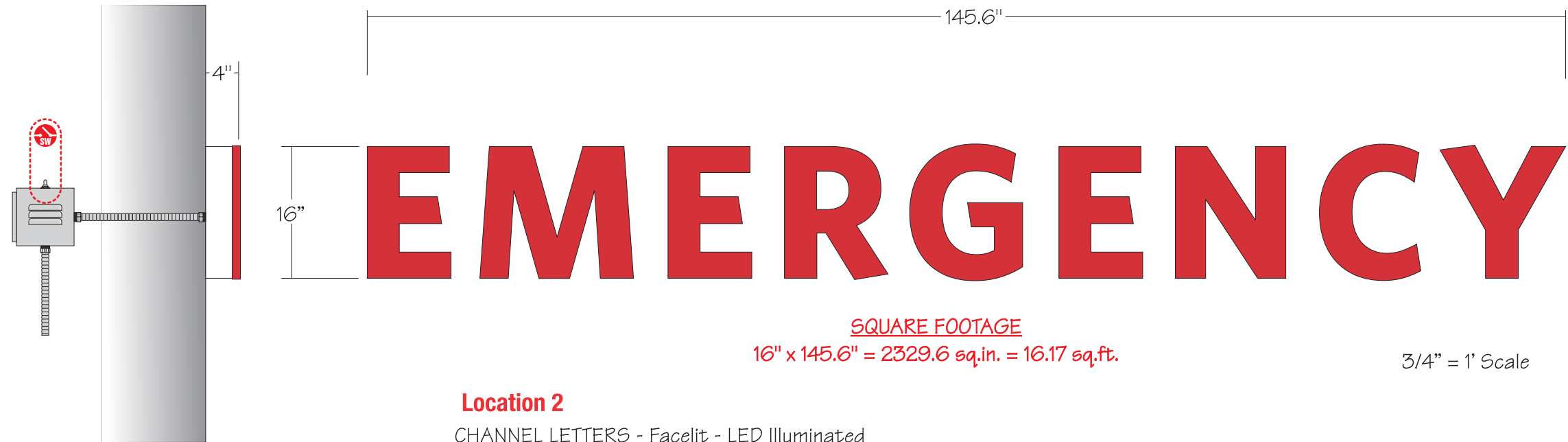


Location 2.2

CHANNEL LETTERS - Facelit - LED Illuminated

- 36.5" x 4" deep facelit channel letters flush mounted on existing wall
- Internal illumination by White LED module and remote mounted power supplies
- Face and return colors TBD



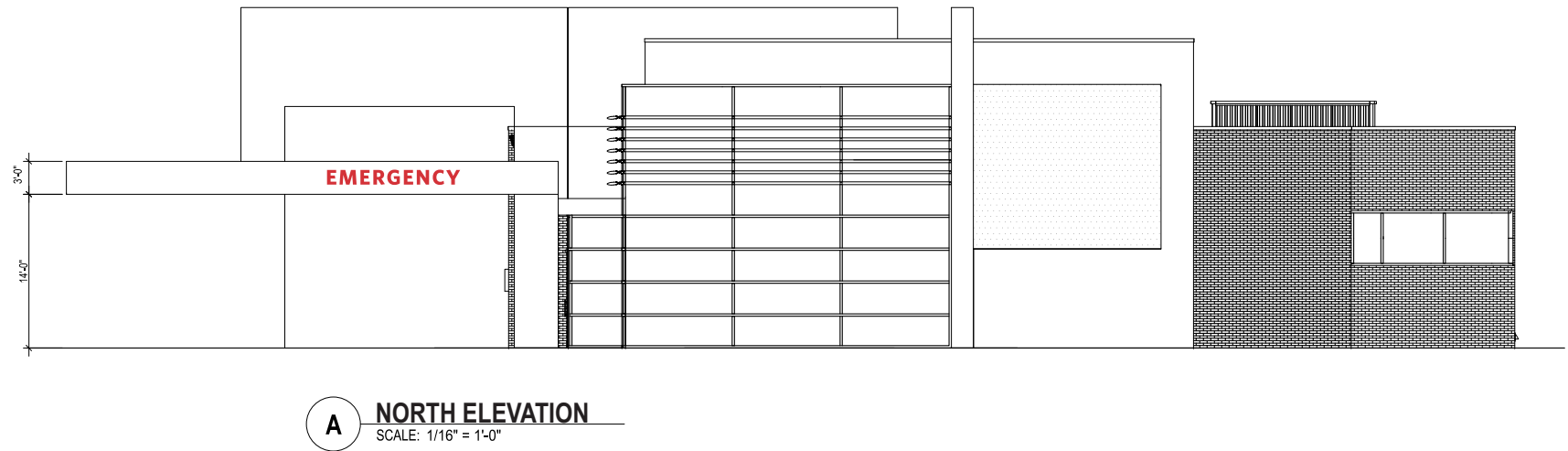


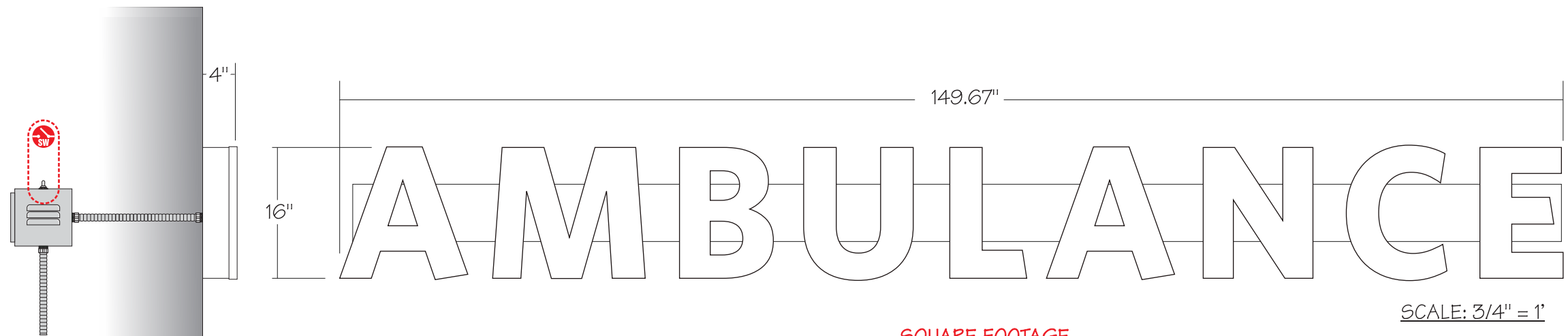
SQUARE FOOTAGE
 $16" \times 145.6" = 2329.6 \text{ sq.in.} = 16.17 \text{ sq.ft.}$

$3/4" = 1' \text{ Scale}$

Location 2

- CHANNEL LETTERS - Facelit - LED Illuminated
- (2) sets of 16" x 4" deep facelit channel letters mounted on faces of an existing canopy
 - Internal illumination by White LED module and remote mounted power supplies
 - Faces are 1/8" White trans acrylic w/ surface applied Calor #2510 Red trans vinyl
 - 1" standard Red trimcap
 - Returns are painted MAP 11477 Natural White





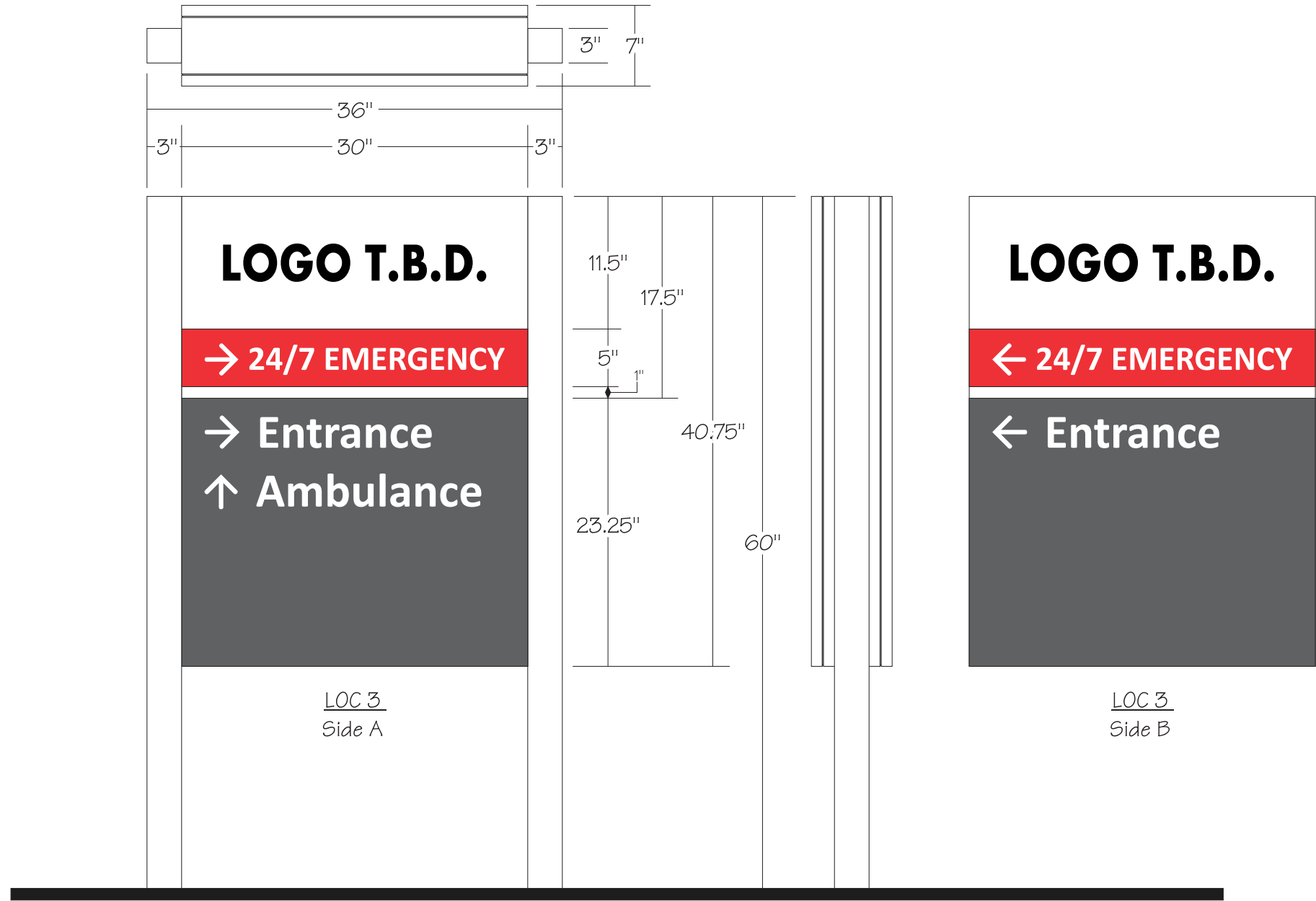
SQUARE FOOTAGE

16" x 145.6" = 2394.72 sq.in. = 16.63 sq.ft.

Location 4

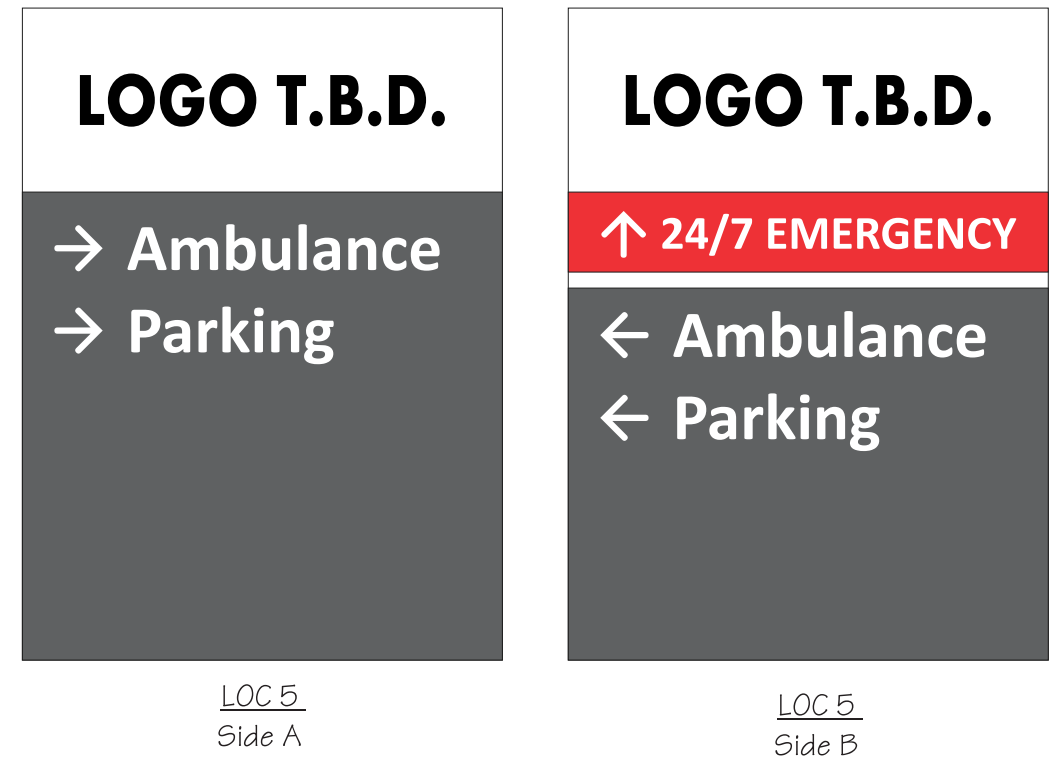
CHANNEL LETTERS - Facelit - LED Illuminated

- 16" x 4" deep facelit channel letters mounted to an extruded aluminum raceway
- Internal illumination by White LED module and remote mounted power supplies
- Faces are 1/8" White trans acrylic
- 1" standard White trimcap
- Returns are painted MAP 11477 Natural White



SQUARE FOOTAGE
40.75" x 30" = 1222.5 sq.in. = 8.48 sq.ft.

SCALE: 1" = 1'



POST & PANEL - Double Sided - LED Illuminated

- 60" x 36" x 7" overall size
- 40.75" x 30" x 7" fabricated aluminum cabinet w/ hinged faces
 - Frame construction w/retro hinge extrusion
 - Bleed retainers
 - 17.5" header and EMERGENCY panel are 1/8" White trans fiberglass
- Directional panel is routed aluminum backed w/ 1/8" White trans acrylic
- Dual 3" square posts - extended for direct burial in concrete footers
- Logo to be digitally printed on trans vinyl and surface applied
- EMERGENCY panel is Calon #33 Red trans w/ reverse cut copy to illuminate White on a Red background
- Cabinet and posts are painted MAP 11477 Natural White
- Directional panel is painted 80% Black
- All electrical service is 277v
- Estimated service load is 1A @ 277v

<input type="checkbox"/> 120v	
<input checked="" type="checkbox"/> 277v	
<input checked="" type="checkbox"/> LED	
<input type="checkbox"/>	
<input checked="" type="checkbox"/> Ext.	
<input type="checkbox"/> Int.	

Logo T.B.D.

INNERFACE
DIRECTING
PEOPLE
BY DESIGN

PMS# 80 % Grey	Calon# 33 Red Trans	PMS# 485 Red
MAP White paint	MAP-Brushed Alum Paint	

7.31.17 TR - 8.3.17 TR - 8.7.17 TR
11.16.17avh - 11.17.17 TB

This drawing and the ideas expressed remain the confidential property of INNERFACE. This drawing and its ideas are not to be reproduced, copied, or disclosed to any other person or entity without the express written consent of a representative of INNERFACE.

ECHO PROTOTYPE DESIGN DEVELOPMENT

[illegible]

REVISION	DESCRIPTION	DATE
PROFESSIONAL SEALS		
INTERIM REVIEW		
THIS DOCUMENT IS RELEASED FOR THE PURPOSE OF INTERIM REVIEW UNDER THE AUTHORITY OF KURT M NEUBECK, ARCHITECT TEXAS REGISTRATION NO. 19490 IT IS NOT TO BE USED FOR REGULATORY APPROVAL, BIDDING, PERMIT, OR CONSTRUCTION PURPOSES.		

ARCHITECTURAL - EXTERIOR
ELEVATIONS

DRAWN BY	CHECKED BY
TS	PROJECT
PROJECT NUMBER	ABBREVIATION
17034.04	ECH
ORIGINAL ISSUE	DATE
ITE PLAN REVIEW	02 AUG 201

A-201

