

**GENERAL NOTES**

- G1. (X) INDICATES DOOR NUMBER, REFER SHEET A-900
- G2. (X) INDICATES WINDOW AND LOUVER NUMBER, REFER SHEET A-910
- G3. (X) INDICATES WALL TYPE, REFER TO SHEET G-003
- G4. (FE) INDICATE WALL MOUNTED FIRE EXTINGUISHER & SEMI-RECESSED FIRE EXTINGUISHER CABINET.
- G5. SEE CODE SHEET G-003 FOR EXTENTS OF FIRE RATED PARTITIONS AND UL LISTINGS
- G6. SEE ENLARGED MECHANICAL, ELECTRICAL AND PLUMBING PLAN DRAWINGS FOR ADDITIONAL INFORMATION
- G7. COORDINATE ALL FINISH DIMENSIONS, PLUMB, MECH., ELECT., AND FIXTURE REQUIREMENTS WITH FINAL FIREWALL CONSTRUCTION
- G8. REFER TO ENLARGED PLANS, SHEETS I-400 SERIES FOR ADDITIONAL PUBLIC INFORMATION G14.
- G9. WATER CLOSET WASTE AND SUPPLY LINES ARE TO BE LOCATED IN WALL CHASE, NOT IN EXTERIOR WALLS, TYPICAL
- G10. TO THE MAXIMUM EXTENT POSSIBLE, FLOOR CLEAN-OUTS ARE TO BE LOCATED IN INCONSPICUOUS LOCATIONS. ALL FLOOR CLEAN-OUTS LOCATED IN CARPETED AREAS ARE TO BE FITTED WITH CARPET INSERTS. ALL CLEAN-OUTS ARE TO BE FLUSH TO FLOORS/WALLS
- G11. FOR ALL ARTWORK & ACCESSORIES, REFERENCE ARTWORK FF&E GUIDE
- G12. (XX) INDICATES FIXTURE, FURNITURE, & DECORATIVE LIGHTING
- G13. (TA) INDICATES PLUMBING/BATHROOM ACCESSORY
- G14. (EQ) INDICATES EQUIPMENT
- G15. (T) INDICATES FINISH TAG, REFER TO INTERIOR FINISH INDEX
- G16. (Hatched) INDICATES INTERIOR WALLS TO RECEIVE SOUND BATT INSULATION

**FLOOR PLAN KEY NOTES**

- 1. HOSE BIB LOCATION, SEE PLUMBING DRAWINGS
- 2. PROVIDE THICKENED SLAB WITH ISOLATION JOINTS AT WASHERS (COORD. WITH EQUIP.)
- 3. DECORATIVE HOOK MOUNTED AT 5'-6" UNLESS OTHERWISE NOTED ON INTERIOR ELEVATION, G.C. TO PROVIDE BLOCKING AS NEEDED
- 4. OWNER PROVIDED ICE MACHINE, COORDINATE WITH MEP DRAWINGS
- 5. ALTERNATING TREAD METAL ACCESS LADDER
- 6. ALIGN FINISHES
- 7. UTILITY SINK - REFER TO PLUMBING DRAWINGS
- 8. NOT USED
- 9. CORRUGATED METAL PANEL (HORIZ.) MECHANICAL SCREEN WITH GALV. METAL POSTS, COLOR TO MATCH BUILDING METAL PANEL SYSTEM
- 10. GAS METER, REFER TO PLUMBING DRAWINGS
- 11. MECHANICAL EQUIPMENT, REFER TO MECHANICAL DRAWINGS
- 12. PLUMBING EQUIPMENT, REFER TO PLUMBING DRAWINGS
- 13. FRIT PLYWOOD BACKER BOARD BLOCKING AT THIS AREA, COORDINATE EXTENTS WITH ELECTRICAL DRAWINGS AND LOW VOLTAGE REQUIREMENTS
- 14. 6" SQUARE METAL GUTTER
- 15. DOWNSPOUT LOCATION (DS)
- 16. STRUCTURAL STEEL COLUMN, REFER TO STRUCT. DRAWINGS
- 17. ROOF HATCH
- 18. INSET WALK-OFF MAT
- 19. MOP SINK, PROVIDE MOP HOOKS ABOVE AND FRP SURROUND UP TO 48" AFF.
- 20. FLOOR OUTLET
- 21. CENTER DOOR FRAME IN CORRIDOR
- 22. DRYER EXHAUST, REFER TO MECHANICAL DRAWINGS
- 23. PROVIDE LAMINATE SHELF & COAT ROD
- 24. PROVIDE PLYWOOD BLOCKING FOR INSTALLATION OF EQUIPMENT
- 25. T.V. LOCATION
- 26. PROVIDE FULL HEIGHT NEOPRENE GASKET (BLACK) BETWEEN STOREFRONT WINDOW FRAME AND FINISHED END OF ADJACENT WALL, FINISH END OF WALL WITH FULL HEIGHT PRE-FINISH ALUM. BRAKE METAL CHANNEL (HEMMED EDGES)
- 27. RECESSED FLOOR RECEPTACLE, REFER TO ELECTRICAL
- 28. LOCKERS TO BE SECURED THROUGH BACK
- 29. CLOSET TO INCLUDE OWNER PROVIDED LAUNDRY BIN
- 30. TILE START POINT, KEYSTONE TILE HIGHLIGHTED
- 31. RUBBER FLOOR START POINT, 48" ROLL WIDTHS
- 32. TILE START POINT IN CORRIDOR CENTER SPLIT BETWEEN TWO TILES
- 33. FLOOR TRANSITION, SEE SHEET I-901 FOR MORE INFORMATION
- 34. CORNER GUARD, SEE DETAIL F9-I-901
- 35. ART WORK, PROVIDE BLOCKING AS NEEDED. REFERENCE INTERIOR ELEVATIONS FOR EXACT LOCATIONS
- 36. SELFIE STATION, REFERENCE INTERIOR ELEVATION ON I-400 FOR EXACT LOCATION, PROVIDE BLOCKING AS NEEDED.
- 37. LINE OF SOLID SURFACE TRANSITION, CENTERED ON UNIT
- 38. DRAPERY TRACK FOR SHEERS TO BE SURFACE MOUNTED CEILING
- 39. NAIL POLISH DISPLAY SHELVES, FF&E ITEM, GC TO PROVIDE BLOCKING AS REQUIRED.
- 40. SCREEN WALL, SEE IFI SPECIFICATIONS FOR MATERIAL EXTENTS
- 41. DECORATIVE HOOK MOUNTED AT 5'-6" ON BACK SIDE OF DOOR
- 42. SPA BED PROVIDED BY OWNER

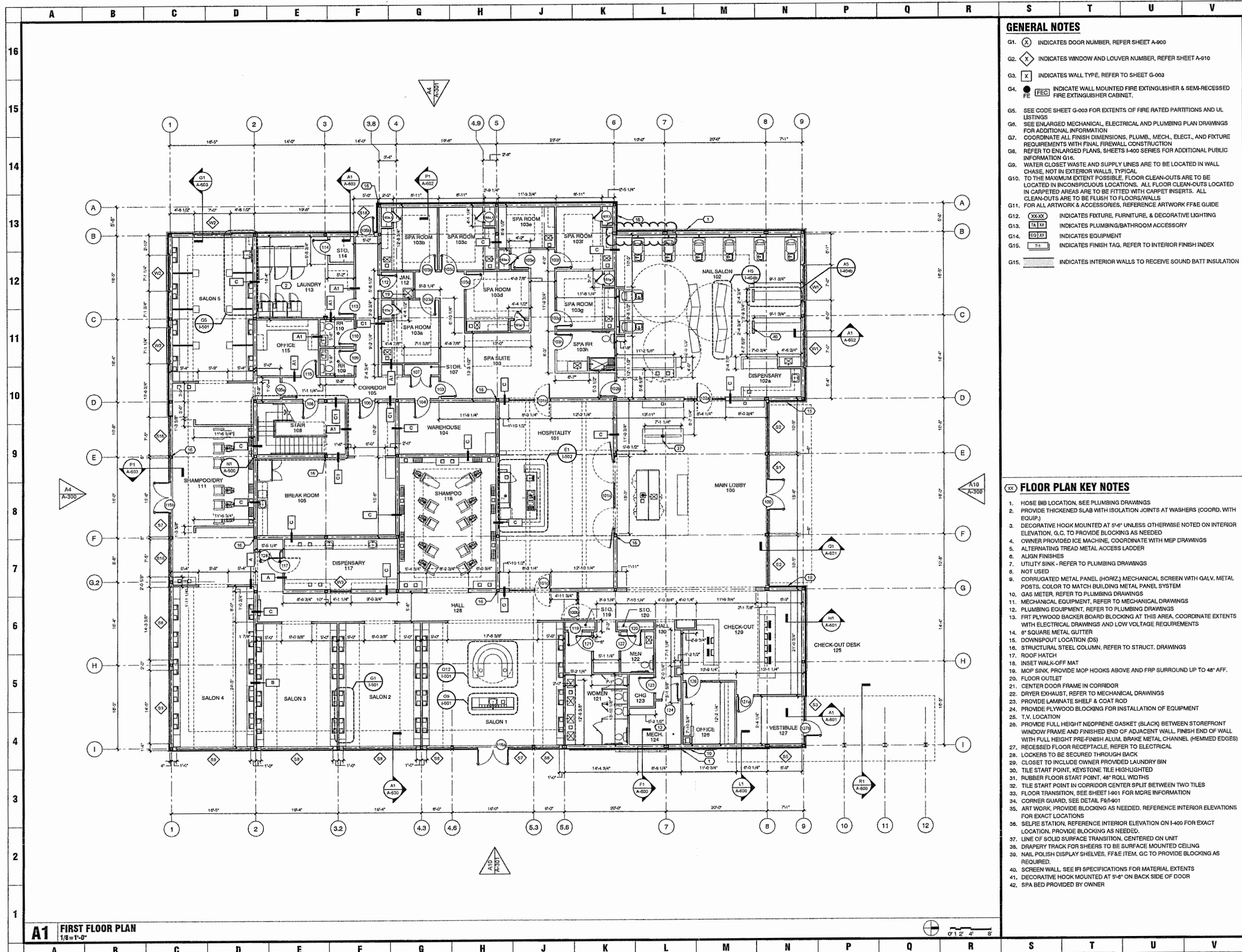
DESCRIPTION	DATE
PERMITTED DOCUMENTS	12.14.2016
BULLETIN 02	3.15.2017
CONSTRUCTION DOCUMENTS	7.28.2017

**THE GRAND SALON**  
VILLAGE PARKWAY  
DUBLIN, OHIO 43017



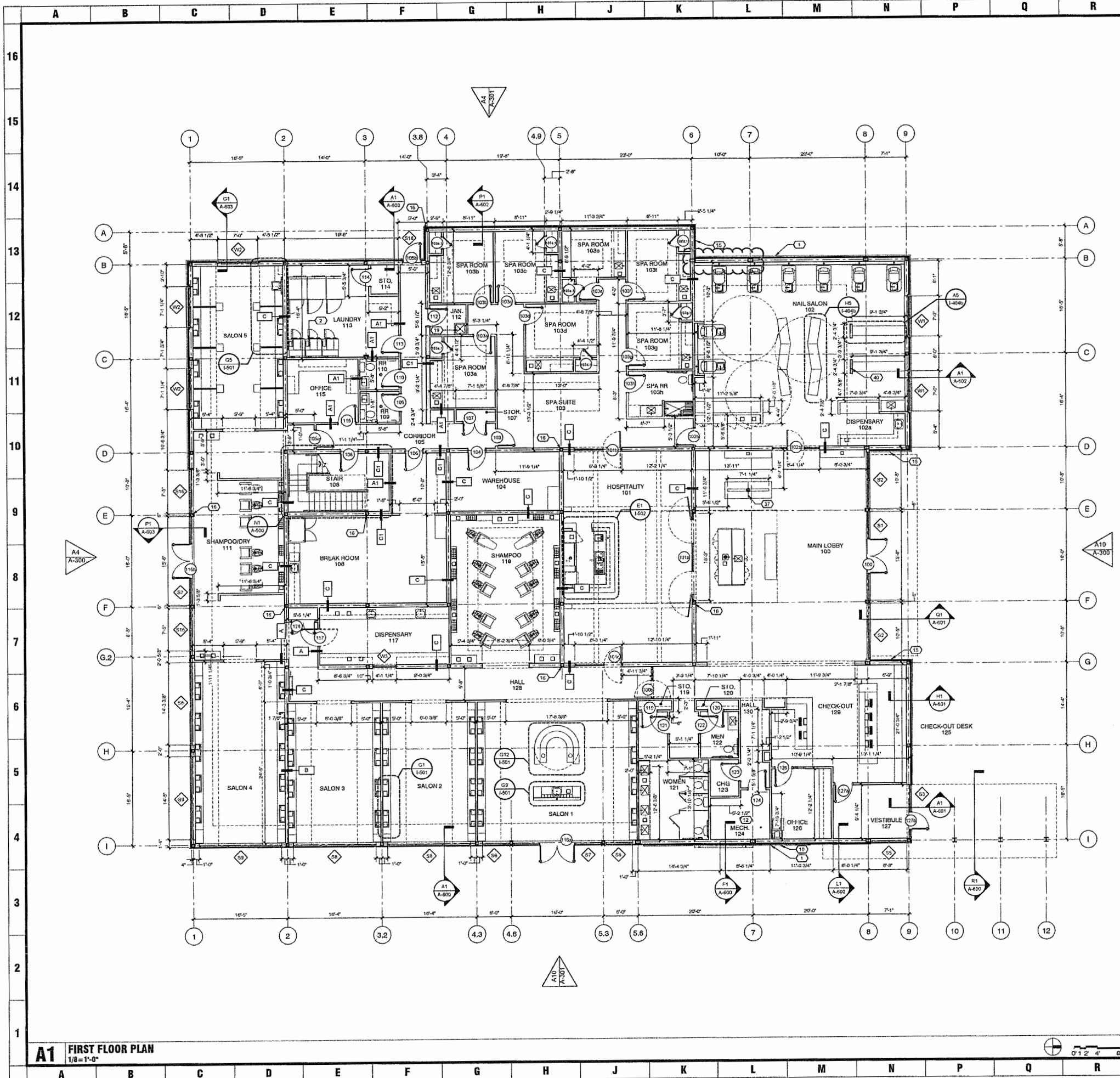
MEYERS + ASSOCIATES PROJECT NUMBER:  
**2015-46**

SHEET NUMBER  
**A-101**



**A1 FIRST FLOOR PLAN**  
1/8" = 1'-0"

**meyers+associates**  
ARCHITECTURE  
233 S. HILL STREET, 3RD FLOOR, COLUMBUS, OH 43215  
1 (614) 233-9437 f (614) 233-9444 www.meyersarchitects.com



- GENERAL NOTES**
- G1. (X) INDICATES DOOR NUMBER, REFER SHEET A-900
  - G2. (◇) INDICATES WINDOW AND LOUVER NUMBER, REFER SHEET A-910
  - G3. (X) INDICATES WALL TYPE, REFER TO SHEET G-003
  - G4. (FE) INDICATE WALL MOUNTED FIRE EXTINGUISHER & SEMI-RECESSED FIRE EXTINGUISHER CABINET.
  - G5. SEE CODE SHEET G-003 FOR EXTENTS OF FIRE RATED PARTITIONS AND UL LISTINGS
  - G6. SEE ENLARGED MECHANICAL, ELECTRICAL AND PLUMBING PLAN DRAWINGS FOR ADDITIONAL INFORMATION
  - G7. COORDINATE ALL FINISH DIMENSIONS, PLUMB., MECH., ELECT., AND FIXTURE REQUIREMENTS WITH FINAL FIREWALL CONSTRUCTION
  - G8. REFER TO ENLARGED PLANS, SHEETS I-400 SERIES FOR ADDITIONAL PUBLIC INFORMATION G18.
  - G9. WATER CLOSET WASTE AND SUPPLY LINES ARE TO BE LOCATED IN WALL CHASE, NOT IN EXTERIOR WALLS, TYPICAL
  - G10. TO THE MAXIMUM EXTENT POSSIBLE, FLOOR CLEAN-OUTS ARE TO BE LOCATED IN INCONSPICUOUS LOCATIONS. ALL FLOOR CLEAN-OUTS LOCATED IN CARPETED AREAS ARE TO BE FITTED WITH CARPET INSERTS. ALL CLEAN-OUTS ARE TO BE FLUSH TO FLOORS/WALLS
  - G11. FOR ALL ARTWORK & ACCESSORIES, REFERENCE ARTWORK FF&E GUIDE
  - G12. (XXX) INDICATES FIXTURE, FURNITURE, & DECORATIVE LIGHTING
  - G13. (TA) (XX) INDICATES PLUMBING/BATHROOM ACCESSORY
  - G14. (EQ) (XX) INDICATES EQUIPMENT
  - G15. (T1) INDICATES FINISH TAG, REFER TO INTERIOR FINISH INDEX
  - G15. (---) INDICATES INTERIOR WALLS TO RECEIVE SOUND BATT INSULATION

- FLOOR PLAN KEY NOTES**
- 1. HOSE BIB LOCATION, SEE PLUMBING DRAWINGS
  - 2. PROVIDE THICKENED SLAB WITH ISOLATION JOINTS AT WASHERS (COORD. WITH EQUIP.)
  - 3. DECORATIVE HOOK MOUNTED AT 5'-6" UNLESS OTHERWISE NOTED ON INTERIOR ELEVATION, G.C. TO PROVIDE BLOCKING AS NEEDED
  - 4. OWNER PROVIDED ICE MACHINE, COORDINATE WITH MEP DRAWINGS
  - 5. ALTERNATING THREAD METAL ACCESS LADDER
  - 6. ALIGN FINISHES
  - 7. UTILITY SINK - REFER TO PLUMBING DRAWINGS
  - 8. NOT USED
  - 9. CORRUGATED METAL PANEL (HORIZ.) MECHANICAL SCREEN WITH GALV. METAL POSTS. COLOR TO MATCH BUILDING METAL PANEL SYSTEM
  - 10. GAS METER, REFER TO PLUMBING DRAWINGS
  - 11. MECHANICAL EQUIPMENT, REFER TO MECHANICAL DRAWINGS
  - 12. PLUMBING EQUIPMENT, REFER TO PLUMBING DRAWINGS
  - 13. FRP PLYWOOD BACKER BOARD BLOCKING AT THIS AREA, COORDINATE EXTENTS WITH ELECTRICAL DRAWINGS AND LOW VOLTAGE REQUIREMENTS
  - 14. 6" SQUARE METAL GUTTER
  - 15. DOWNSPOUT LOCATION (DS)
  - 16. STRUCTURAL STEEL COLUMN, REFER TO STRUCT. DRAWINGS
  - 17. ROOF HATCH
  - 18. INSET WALK-OFF MAT
  - 19. MOP SINK, PROVIDE MOP HOOKS ABOVE AND FRP SURROUND UP TO 48" AFF.
  - 20. FLOOR OUTLET
  - 21. CENTER DOOR FRAME IN CORRIDOR
  - 22. DRYER EXHAUST, REFER TO MECHANICAL DRAWINGS
  - 23. PROVIDE LAMINATE SHELF & COAT ROD
  - 24. PROVIDE PLYWOOD BLOCKING FOR INSTALLATION OF EQUIPMENT
  - 25. T.V. LOCATION
  - 26. PROVIDE FULL HEIGHT NEOPRENE GASKET (BLACK) BETWEEN STOREFRONT WINDOW FRAME AND FINISHED END OF ADJACENT WALL, FINISH END OF WALL WITH FULL HEIGHT PRE-FINISH ALUM. BRAKE METAL CHANNEL (HEMMED EDGES)
  - 27. RECESSED FLOOR RECEPTACLE, REFER TO ELECTRICAL
  - 28. LOCKERS TO BE SECURED THROUGH BACK
  - 29. CLOSET TO INCLUDE OWNER PROVIDED LAUNDRY BIN
  - 30. TILE START POINT, KEYSTONE TILE HIGHLIGHTED
  - 31. RUBBER FLOOR START POINT, 48" ROLL WIDTHS
  - 32. TILE START POINT IN CORRIDOR CENTER SPLIT BETWEEN TWO TILES
  - 33. FLOOR TRANSITION, SEE SHEET I-901 FOR MORE INFORMATION
  - 34. CORNER GUARD, SEE DETAIL F9/I-901
  - 35. ART WORK, PROVIDE BLOCKING AS NEEDED, REFERENCE INTERIOR ELEVATIONS FOR EXACT LOCATIONS
  - 36. SELFIE STATION, REFERENCE INTERIOR ELEVATION ON I-400 FOR EXACT LOCATION, PROVIDE BLOCKING AS NEEDED.
  - 37. LINE OF SOLID SURFACE TRANSITION, CENTERED ON UNIT
  - 38. DRAPERY TRACK FOR SHEERS, FF&E ITEM. GC TO PROVIDE BLOCKING AS REQUIRED.
  - 39. NAIL POLISH DISPLAY SHELVES, FF&E ITEM. GC TO PROVIDE BLOCKING AS REQUIRED.
  - 40. SCREEN WALL, SEE IFI SPECIFICATIONS FOR MATERIAL EXTENTS
  - 41. DECORATIVE HOOK MOUNTED AT 5'-6" ON BACK SIDE OF DOOR
  - 42. SPA BED PROVIDED BY OWNER

**meyers+associates**  
 ARCHITECTURE  
 222 N. High Street, 9th Floor, Columbus, OH 43215  
 T (614) 221-9433 F (614) 221-9441  
 www.meyersarchitects.com

THIS DRAWING IS COPYRIGHTED AND IS THE SOLE PROPERTY OF MEYERS+ASSOCIATES ARCHITECTURE, LLC. IT IS PROVIDED FOR USE BY THE PROPERTY OWNER FOR REPRODUCTION OR OTHER USE OF THIS DRAWING OR THE INFORMATION CONTAINED HEREIN WITHOUT THE WRITTEN PERMISSION OF THE ARCHITECT IS STRICTLY PROHIBITED. ALL RIGHTS RESERVED. COPYRIGHT 2017

DESCRIPTION	DATE
PERMITS/DC DOCUMENTS	12.14.2016
BULLETIN 02	9.16.2017
CONSTRUCTION DOCUMENTS	7.28.2017

**FIRST FLOOR PLAN**  
**THE GRAND SALON**  
 VILLAGE PARKWAY  
 DUBLIN, OHIO 43017



MEYERS+ASSOCIATES PROJECT NUMBER:  
**2015-46**  
 SHEET NUMBER  
**A-101**

**A1 FIRST FLOOR PLAN**  
 1/8" = 1'-0"

