

WELCOME

Neighborhood Leadership Meeting

Mayor Jane Fox
Oct. 18, 2023

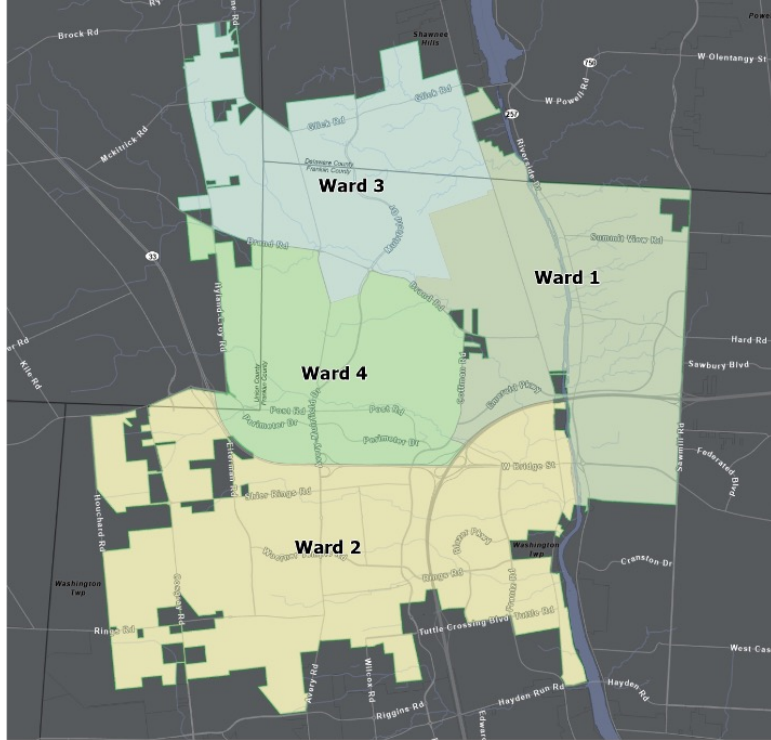


Current City Highlights & Envision Dublin Update

Megan O'Callaghan
City Manager



Dublin City Council



The Dublin City Council is comprised of 4 members elected by their Ward and 3 At-Large members.



Back row from left: **Vice Mayor Cathy De Rosa** (Ward 4), **Mayor Jane Fox** (Ward 2) **John Reiner** (Ward 3), Amy Kramb (Ward 1)
Front row from left: **Christina A. Alutto** (At-Large),
Andy Keeler (At-Large) **Chris Amorose Groomes** (At-Large)



Boards and Commissions



Show your interest!

fuelthefuture.dublinohiousa.gov

- Architectural Review Board
- Board of Zoning Appeals
- Chief's Advisory Committee
- Community Inclusion Advisory Committee
- Community Services Advisory Commission
- Planning & Zoning Commission



Strategic Framework

Vision: Dublin, Ohio is the Most **Sustainable**, **Connected** and **Resilient** Global City of Choice



Sustainable

- Economic
- Fiscal
- Environmental
- Services



Connected

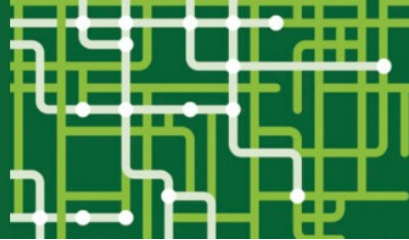
- Democracy
- Mobility
- Infrastructure
- Land Use



Resilient

- Physical
- Mental
- Safety
- Social





10-Gig fiber is coming to Dublin

The most connected community in the U.S.



**Have you signed up
for updates yet?**

DublinOhioUSA.gov/most-connected



altafiber



SIGMA TECHNOLOGIES



EVERYTHING GROWS HERE.

Parks & Recreation Master Plan

- Comprehensive parks, recreation facilities and recreation program assessment
- Long-term use and development of parks and facilities
- Extensive community engagement
- Adopted by City Council Oct. 9





ENVISION DUBLIN

Community Plan

Sustainable, Connected & Resilient

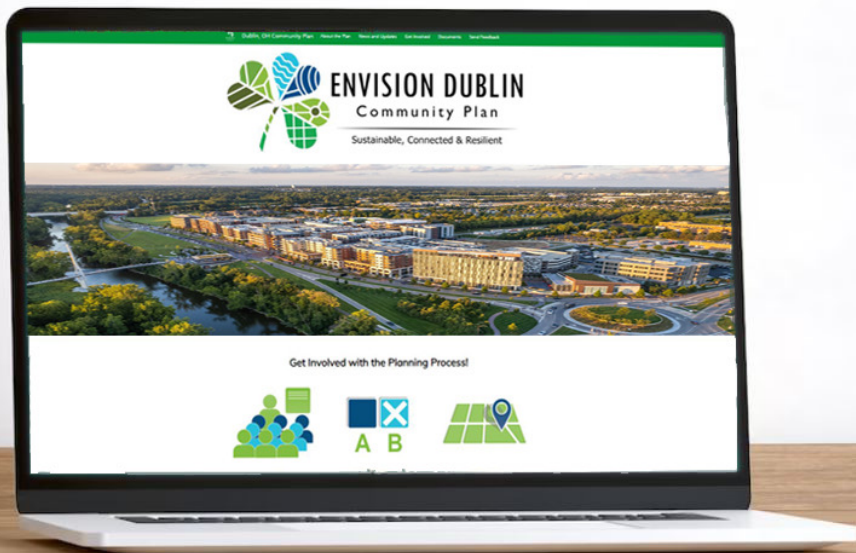


Dublin Sustainability Plan

DUBLINOHIOUSA.GOV



Visit: EnvisionDublin.org



Community Plan Involvement



Visit the project website – envisiondublin.org





DEVELOPMENT UPDATES



Mount Carmel Health Campus

Site

- NW of I-270 and Sawmill Rd interchange

Project

Phase 1 (204,500 SF Total)

- 4-story, 30-bed, 153,000 SF hospital
Excluding 25,000 SF shell space on 4th floor
- 2-story, 51,500 SF attached MOB
- 728 parking spaces

Status

- Under construction



Towns on the Parkway

Site:

- 11 acres
- John Shields and Village Parkways

Project:

- 154 Townhomes

Status:

- Under construction



Bridge Park, Block F – The Bailey



Site

- 4351 Mooney Street

Project

- 6-story senior living building
- 87 dwelling units

Status

- Permit review/construction



Bridge Park – Block Y



Site

- Southeast of W. Dublin-Granville Rd. / Riverside Dr. roundabout

Project

- condo tower
- hotel
- events center
- Podium parking

Status

- 11/3/22 – PZC Informal
- Development Agreement



North Riverview Street Properties

Site:

- City-owned parcels
- Historic District

Project:

- City issued RFP
- Riverview Village

Status:

- Development agreement with COhatch approved
- Successful auction of 3 properties



The Corners

Site

- Northwest of the intersection of Rings Road and Frantz Road

Project

- 70,000 SF of restaurant, service-oriented retail, offices, and public park space

Status

- Development Ongoing



Hyland Glen Subdivision

Site

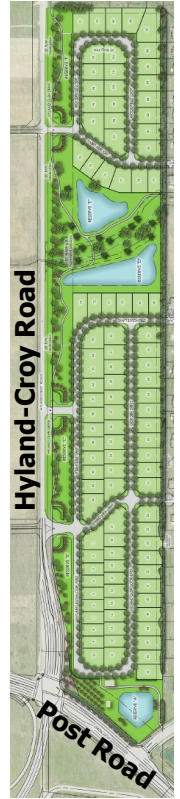
- 42.5-acres
- Hyland Croy and Post Roads

Project

- 102 residential lots, single-family
- 12.8-acres of open space

Status

- Permitting/construction



U.S. 33/S.R. 161/Post Road Interchange

Project

- Improvements to the U.S. 33/S.R. 161/Post Road Interchange Project
- Ramp realignment, bridge replacement and widening, signal upgrades, roadway widening, aesthetics, etc.

Status

- Ongoing
- Construction expected to be complete in 2025



Franklin Street (North) Extension

Project

- Construction of Franklin Street from Bridge Street to North Street including a waterline, brick paver sidewalks and a new traffic signal

Status

- Opening Monday!



`Tis the Season: Leaf and Snow Removal

Jay Anderson
Director Public Service



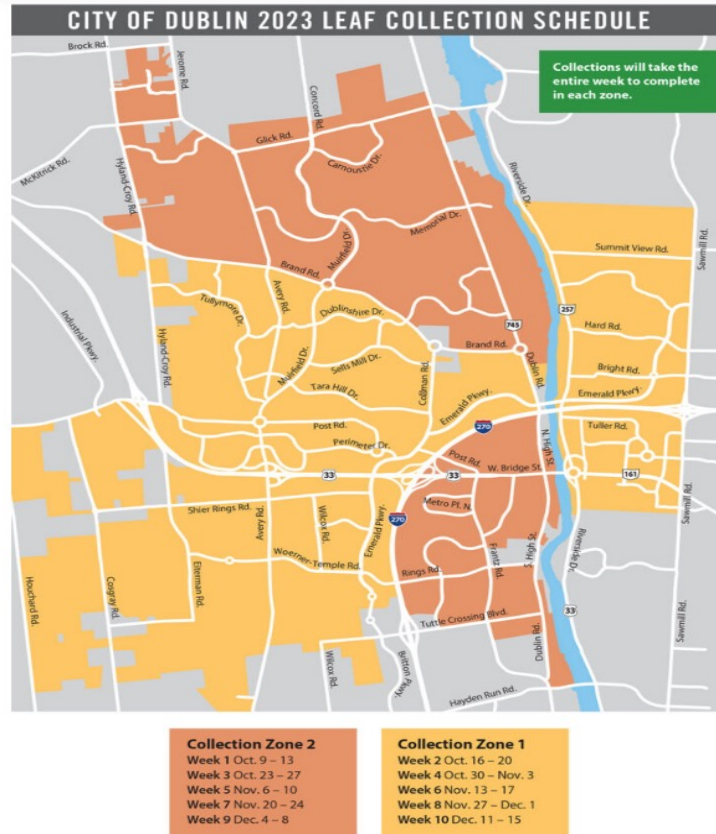
Leaf Collection Program

LEAF

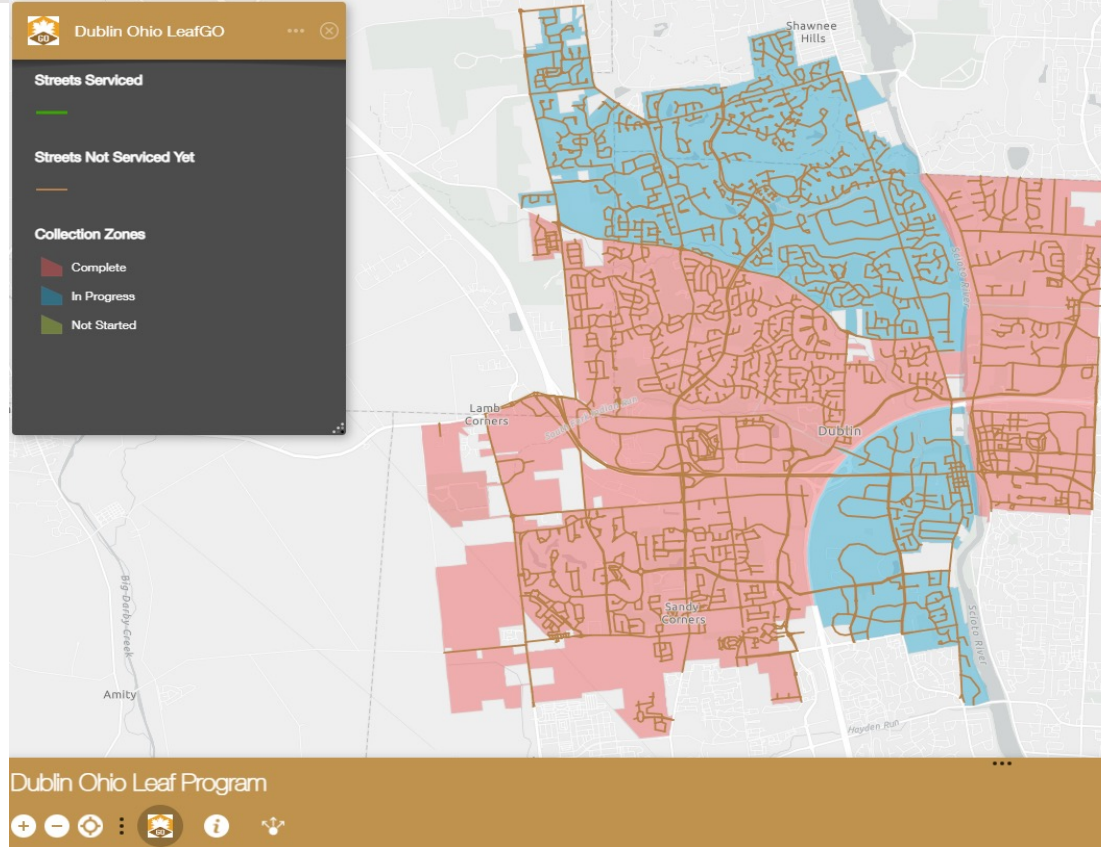
DublinOhioUSA.gov/leafgo



2023 Leaf Collection Schedule



Leaf Program Service Map



Remember to Rake Them Right

- Rake to grassy area between the street and sidewalk/ by the curb.
- Never put leaf piles in the street.
- Rake leaves to the curb by 7 a.m. Monday of your Zone week.
- Collections typically take the entire week to complete.
- Residents may bag leaves in biodegradable bags for weekly curbside yard waste pickup.
- Please share this information with your lawn care companies.



Snow and Ice Removal Program

SNOW

www.DublinOhioUSA.gov/snowgo



Snow Operations — What We Do...

Servicing 657 lane miles of roadway

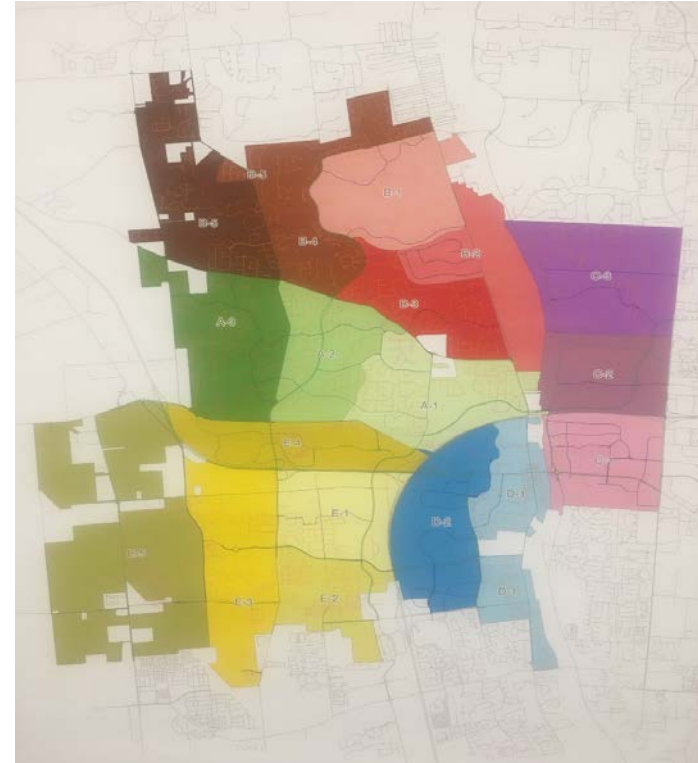
33 miles of shared use path

16.5 miles of sidewalks



Snow Operations — Service Districts and Staffing Levels

- The City provides 24/7 coverage throughout the winter months.
- 22 routes = 22 trucks and 1 loader operator per shift.
- Staff work 12-hour shifts
- Total of 46 employees work on street snow removal operations in a 24-hour snow shift.

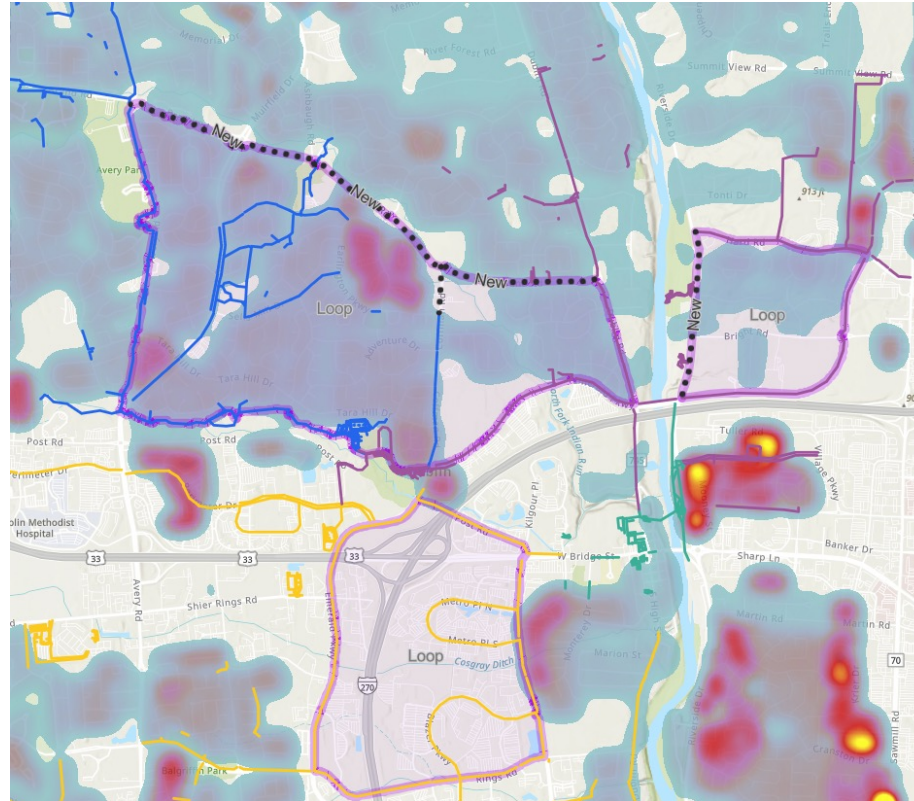


Snow Operations

- City buildings, bike paths and City sidewalks
- Total of 14 employees to cover a 24-hour snow shift
- 3 shared use path routes
- 2 building routes
- 1 parking lot route
- 1 Historic Dublin route



Shared Use Path Plowing “Loops”



Snow Operations – Fleet

Fleet technicians divide to provide an equal response and support to both AM and PM snow shifts.

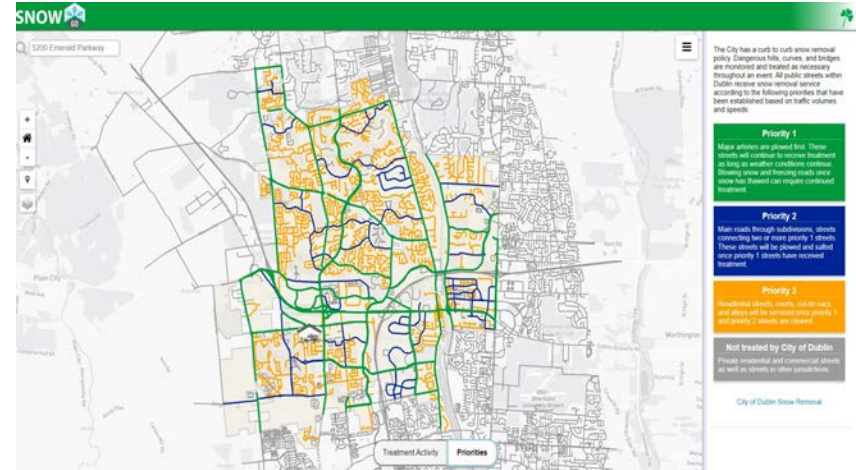
Their response and accessibility are critical to every departments' success!



Snow Operations — SnowGo

Route Priorities — Established based on traffic volumes and speeds

- Priority Routes 1-3
- Real time tracking
- Treated in last hour
- Treated in last 6 hours
- Treated +6 hours ago
- Not treated yet
- Not treated by Dublin

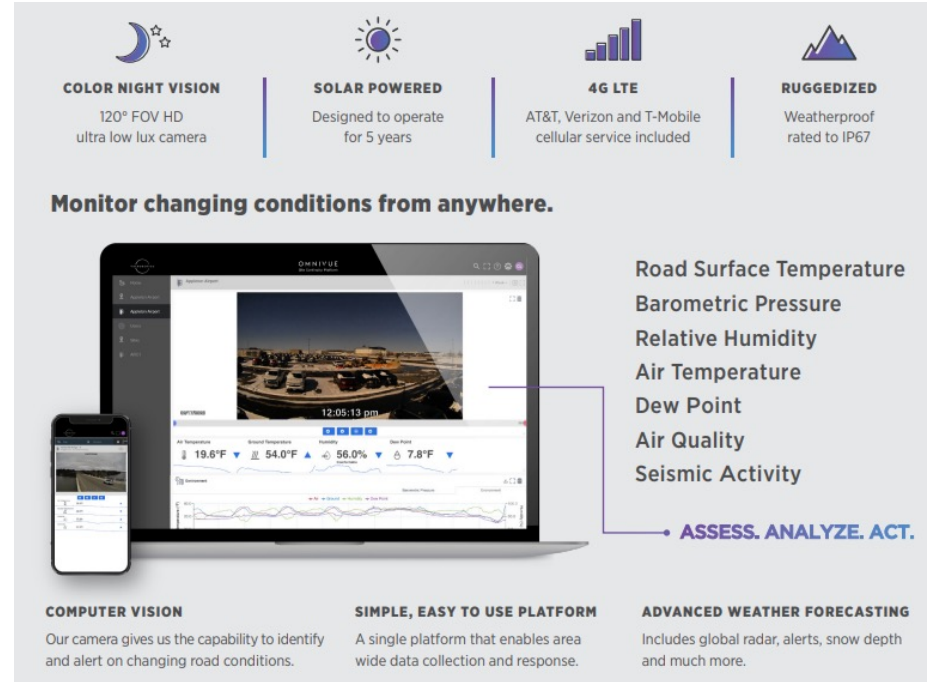


RWIS – Roadway Weather Information Stations

- Weather data
- Surface temperatures
- Air temperatures
- AI – Snow Detection (New for 2024)

Three RWIS Stations

- Avery over S.R. 33
- Emerald Parkway bridge
- Hyland-Croy at Glacier Ridge



The graphic illustrates the RWIS system's capabilities and user interface. At the top, four icons represent key features: Color Night Vision (moon and stars), Solar Powered (sun), 4G LTE (signal bars), and Ruggedized (mountain peak). Below these, a central section shows a laptop and smartphone displaying the RWIS dashboard. The dashboard includes a live camera feed, a list of weather data points, and a line graph showing historical trends. To the right of the devices, a list of monitored conditions is shown. At the bottom, three sections describe the system's vision, platform, and forecasting capabilities.

COLOR NIGHT VISION
120° FOV HD
ultra low lux camera

SOLAR POWERED
Designed to operate
for 5 years

4G LTE
AT&T, Verizon and T-Mobile
cellular service included

RUGGEDIZED
Weatherproof
rated to IP67

Monitor changing conditions from anywhere.

Road Surface Temperature
Barometric Pressure
Relative Humidity
Air Temperature
Dew Point
Air Quality
Seismic Activity

ASSESS. ANALYZE. ACT.

COMPUTER VISION
Our camera gives us the capability to identify
and alert on changing road conditions.

SIMPLE, EASY TO USE PLATFORM
A single platform that enables area
wide data collection and response.

ADVANCED WEATHER FORECASTING
Includes global radar, alerts, snow depth
and much more.



Paint the Plow Program



Name the Snow Plow



Parks & Recreation Master Plan & Park Improvements

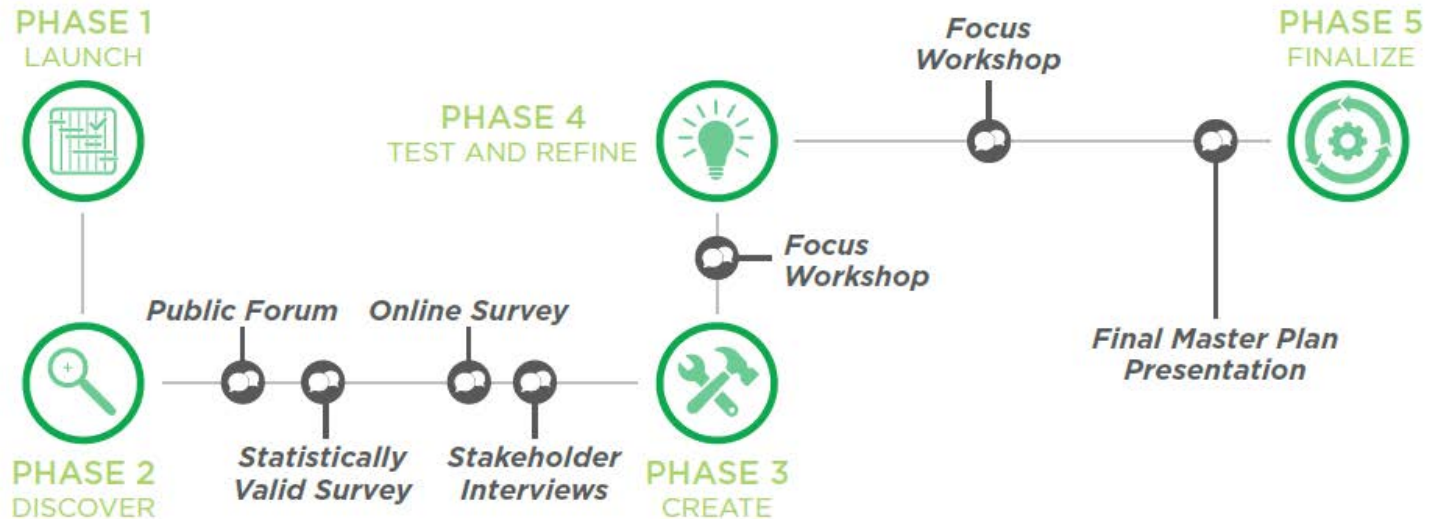
Matt Earman
Director Parks & Recreation



Background

TIMELINE & ENGAGEMENT

The process included data collection, public input, field assessments, review of existing conditions, market research, and open dialogue with local leadership and key stakeholders. The overall planning process followed a path, as illustrated below:



“Provide every resident of the City of Dublin an exceptional parks and recreation experience to elevate Dublin to a global city of choice.”



Key Focus Areas

FOCUS FOR PARK LAND:

Acquire and develop new parkland, and maximize the value of each park type currently in the system to reach the full recreation value associated with its design.

FOCUS FOR RECREATION FACILITIES:

Enhance parks and recreation facilities through new or improved program services to maximize the community's investment in its parks and recreation facilities and enhance their impact on the quality of life for Dublin residents.

FOCUS FOR PROGRAM SERVICES:

Activate parks and recreation facilities through program services to maximize the community's investments made in these facilities and enhance their value and impact on the quality of life for living in Dublin.

FOCUS FOR PARK AND RECREATION OPERATIONS:

Provide industry-leading and innovative services for parks and recreation operations to deliver an exciting and high-quality experience for Dublin residents.

FOCUS FOR FINANCING:

Expand the funding options available to the Parks and Recreation Department to fund the community's desire for a world class parks and recreation system that meets or exceeds the community's vision for Dublin.



Prioritize the Maintenance of Existing Facilities and Balance with New Investment

MAINTENANCE PROJECTS

The following maintenance projects were identified as part of the site assessments and are predominantly able to be completed in house.

MAINTENANCE PROJECTS (Priority to Address)				
LOCATION	FACILITY / AMENITY / INFRASTRUCTURE	PROJECT	ESTIMATED TOTAL PROJECT COST	RATIONALE
Coffman Park	Ice rink plaza	Replace sealant in joints around ice-rink area	Overhead Cost	Site Assessments
Coffman Park	Tennis courts	Repair tennis court surface	\$10,000.00	Site Assessments
Coffman Park	Casting Pond	Repair stair handrail between ice rink and casting pond	Overhead Cost	Site Assessments
Coffman Park	Ice rink plaza	Replace missing tree at ice rink plaza	\$500.00	Site Assessments
Coffman Park	Wooded playground	Reset pavers at seating area in wooded playground	Overhead Cost	Site Assessments
Darree Fields	Houchard entry	Repair rutted edges along Houchard access drive	Overhead Cost	Site Assessments
Darree Fields	Houchard entry	Remove Houchard entrance metal entrance sign	Overhead Cost	Site Assessments
Darree Fields	Soccer	Repair soccer lawn that has failed to establish	Overhead Cost	Site Assessments
Darree Fields	Shier-Rings entry	Repair stone falling off entry columns at Shier-Rings entry	Overhead Cost	Site Assessments
Darree Fields	Baseball	Remove vines and repaint baseball "barn" pavilion	Overhead Cost	Site Assessments
Dublin Community Pool - North	Lighting	Repair broken up-light along fence near road	Overhead Cost	Site Assessments
Dublin Community Pool - North	Landscaping	Trim trees or relocate flagpole along south fence	Overhead Cost	Site Assessments
Dublin Community Pool - South	Dumpster	Add dumpster enclosure for extra dumpster	\$10,000.00	Site Assessments
Dublin Community Pool - South	Landscaping	Correct drainage and soil erosion along outside of parking	Overhead Cost	Site Assessments
Dublin Veterans Park	Landscaping	Confirm planting bed design with what has established.	Overhead Cost	Site Assessments
Earlington Park	Bike path	Repair buckled bike path around pond	\$7,500.00	Site Assessments
Earlington Park	Furnishings	Replace green picnic table at pond	\$2,000.00	Site Assessments

The Plan focuses on maintaining and enhancing existing facilities, with an eye towards ensuring current maintenance needs are prioritized.

Specific recommendations for maintenance and renovation projects in existing community parks are provided in the PRMP document.

Several potential major projects identified in the PRMP are for the maintenance of existing facilities. Some examples include:

- DCRC Renovations
- Updating specific master plans for parks that are more than 25 years old
- Adding smart park site amenities to existing parks



PRMP Implementation Plan Time Frames

Potential Implementation Plan Time Frame Distribution			
In Progress	Short - 1-3 Years	Medium 4-7 Years	Long 7+ Years
1.3 - (a) Update RCP Master Plan (East and West)	1.1 - Increase the number of sports fields	1.4 - Update older parks' master plans	1.5 - Determine viability of an arboretum
2.3 - Update the DCRC Master Plan	1.2 - Develop adventure facilities	2.1 - Conduct feasibility studies of new facilities	1.6 - Focus on strategic land acquisition
3.1 - Revise the recreation program plan	1.3 - (b) Update Coffman Park Master Plan	5.1 - Identify new dedicated funding options	4.1 - Research smart parks technology
3.2 - Update park facilities based on PIR data	2.2 - Develop revenue producing business plans	5.2 - Develop diversified funding strategies	
3.3 - Annually assess the Core Program areas	4.2 - Determine parks operational services costs		
4.4 - Create Parks and Recreation marketing plan	4.3 - Maintain life cycle replacement program		
5.4 - Update the pricing and partnership policies	5.3 - Establish financial direction across divisions		



Strategies for Projected Growth



2023 Housing Study Map

The PRMP includes the following strategies to balance the parks and recreation needs of Dublin residents with the projected growth of non-residents served by Dublin parks and recreation amenities.

- Create partnerships with neighboring communities for collaborative regional planning of additional parks and recreation amenities in the future.
- Establish funding partnerships with regional stakeholders for additional amenities provided by the City of Dublin.
- Consider new pricing strategies for City facilities and partner with other entities to offset current operational and maintenance costs of parks and recreation amenities.
- Consider policy amendments with limitations for non-residents for usage of City parks and recreation amenities that are near or at capacity, as is done in other parks and recreation systems across the country.



Potential PRMP Projects Programmed in the Five-Year Capital Improvements Program

In Progress

- Updating the Riverside Crossing Park (RCP) Master Plan, which will potentially include the following projects identified in the PRMP:
 - Event lawn improvements on the east side of RCP
 - Outdoor adventure activities, to include a kayak livery, high ropes course, and/or via ferrata

Budgeted in 2024

- DCRC Improvements: \$4,494,000
- Design for additional pickleball courts in Coffman Park: \$150,000

Programmed in 2025 – 2028

- Construction of additional pickleball courts in Coffman Park: \$600,000 (2025)
- Event lawn improvements on the east side of RCP: \$1,000,000 (2026)
- Kayak livery and launch on west side of RCP
 - Design – \$500,000 (2025)
 - Construction – \$2,000,000 (2026)
- Darree Fields Park Enhancements, to include additional synthetic turf fields
 - Design – \$2,250,000 (2025)
 - Construction – \$10,300,000 (2026)

Implementation of capital projects and maintenance items identified in the PRMP will be identified in future operating budgets and CIPs.

Planning for some capital projects identified in the PRMP is already in progress.

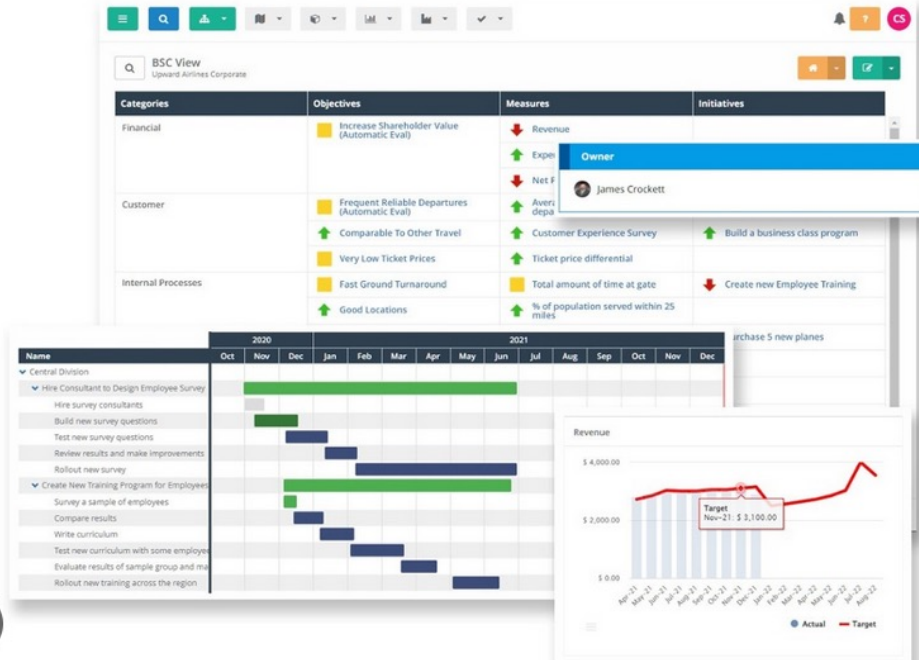
Additionally, in the recently adopted 2024 – 2028 CIP, funds were either budgeted or programmed for projects identified in the PRMP.



PRMP Implementation Communication



ClearPoint Strategy



Park Renovations and Improvements

- Neighborhood Playground Renovations
 - Donegal Cliffs
 - Monterey Park
 - Shannon Glen Park



Dublin's Backyard with Barbara Ray: Deer

Barbara Ray
Nature Education Coordinator



Deer Behavior

- Deer move in and out of Dublin from surrounding areas
- Managing deer in an open environment is difficult
- Typically, deer use a 2-5 mile “circle” for their daily activities
- Deer will use a smaller “circle” where feed and salt licks are provided
- May become defensive in the spring and early summer
- Eliminating feeding, practicing hazing (when appropriate) and using strategic landscape design can reduce deer conflict and damage

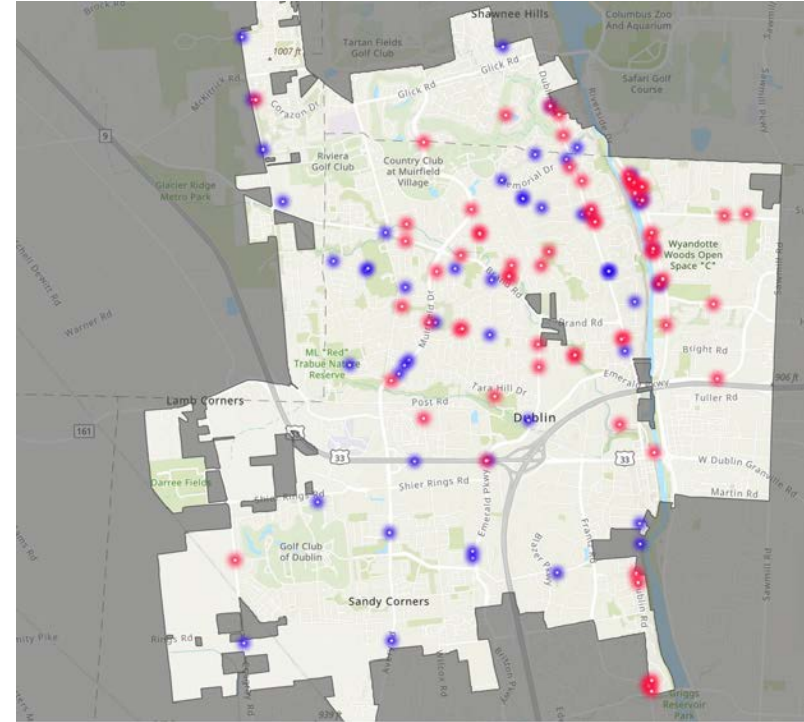


Dublin works closely with the Ohio Department of Natural Resources and communities throughout Ohio to understand best management practices



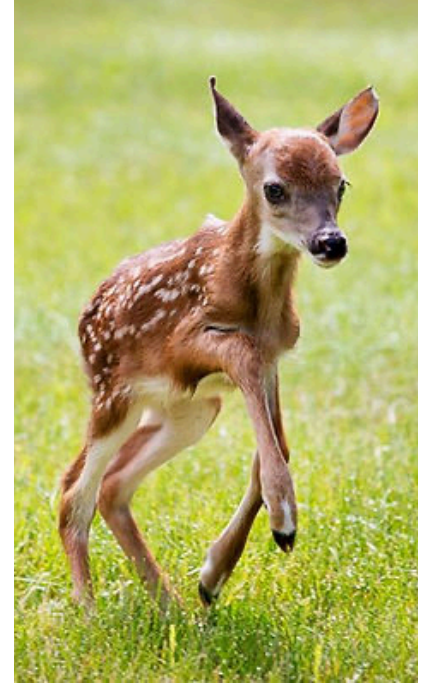
Deer Conflicts

- **Tolerance** is measured through number of deer damage and safety complaints/amounts and deer vehicle accident numbers
- **Habitat** is assessed by deer damage to habitat, browse line, deer condition and reproduction
- 74 dead deer picked up by Dublin in 2022
- In 2022, there were 12 deer vehicle accidents
 - One resulted in minor injury to the driver
- Dublin's deer do not present a public safety issue at this time



You Can Help!

- Neighborhood leadership can help communicate the following points to residents:
 - Do not feed wildlife, especially grains and salt
 - Place bird feeders above 5' to prevent deer from raiding them
 - Implement suggestions from the Nature Education webpage to deter deer from your yard
 - Suggest carrying an umbrella when walking dogs where deer are known to be active
- Ask residents to communicate defensive deer behavior so neighbors can avoid these areas for a couple of weeks
- Drive cautiously during the fall rut (October-December) and anywhere deer crossing signs are marked
- The Community Services Advisory Commission will make a recommendation to City Council on this topic
- Visit the Nature Education webpage for more information



DUBLIN'S BACKYARD



With Barbara Ray



Nature Education Coordinator
Barbara Ray
614.309.6916
bray@dublin.oh.us

or submit a "Wildlife Information" request via
GoDublin



Slow Down Dublin – Speed Management Plan

Jeannie Willis
Director Transportation & Mobility



Slow Down Dublin

- Community campaign to encourage awareness, education and engagement
- Evolved from Speed Management program to create safe and comfortable streets for all residents and road users in Dublin, including those walking and rolling
- A data-driven approach to speed management to reduce traffic-related fatalities and serious injuries
- Partnership between the City, including Dublin Police, and community members



Slow Down Dublin

Goals

1. Reduce traffic-related fatalities and serious injuries in the City of Dublin for all roadway users, including those walking and rolling.
2. Reduce excessive speeding across Dublin. Excessive speeding is defined as traveling more than 15 mph over the speed limit.
3. Develop strategies to address speeding concerns on Dublin streets.

Data-Driven Approach

The program offers a three-step process for each speeding concern received:

1. Collect data and educate
2. Police and Transportation & Mobility Staff evaluate to determine speed management category
3. Use the Speed Management Toolbox and implementation guide to select appropriate solutions



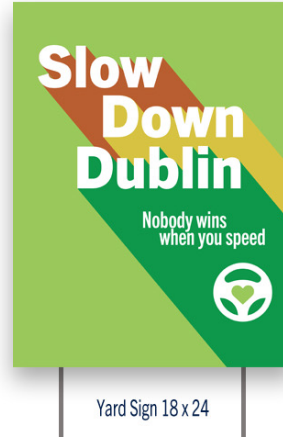
Speed Management Toolkit

Use The Tools

Use our resources to support the Slow Down Dublin initiative or gather data and information for your neighborhood:

- Car Magnets
- Vinyl Stickers
- Yard Signs
- Police Ride-along
- Police Speed Laser
- Request a speed study on your street
- Report a speed concern

Request at DublinOhioUSA.gov/SlowDown or use the QR code on the back of the agenda



Speed Management Program

Speed Management Categories

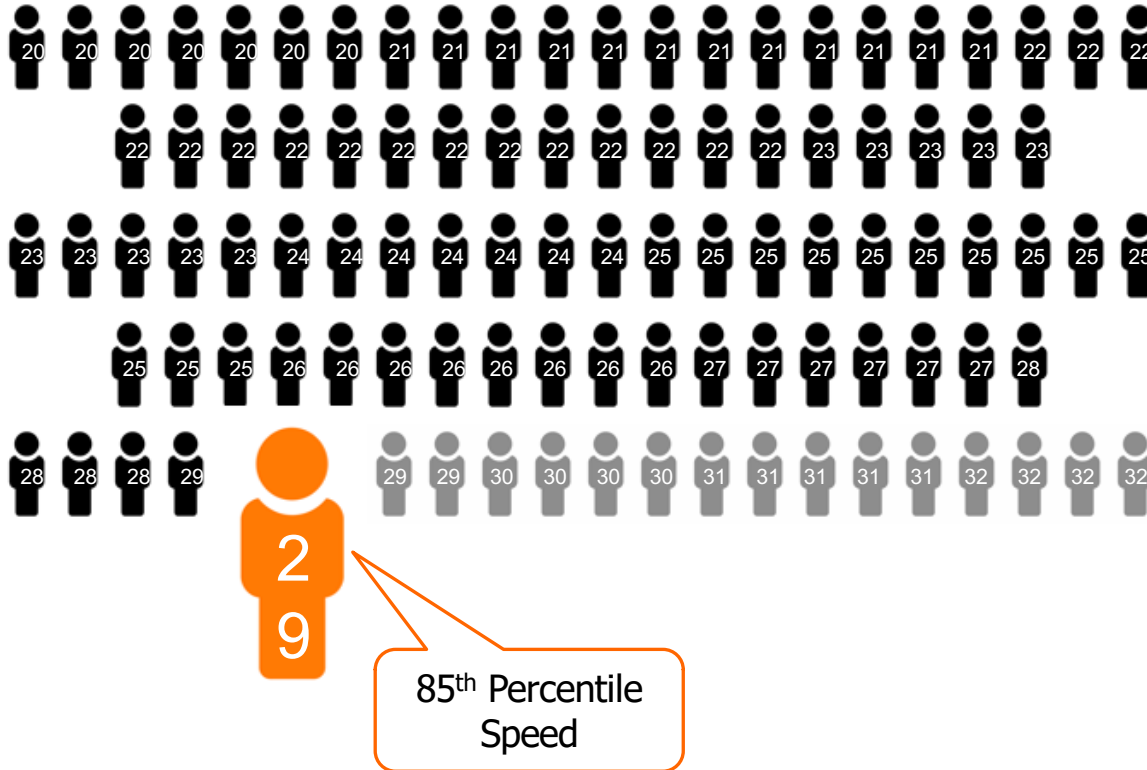
Speed Limit (mph)	Category 1	Category 2	Category 3	
	85 th Percentile Speed over the Posted Speed Limit (mph)	85 th Percentile Speed over the Posted Speed Limit (mph)	85 th Percentile Speed over the Posted Speed Limit (mph)	Or one percent of motorists are traveling more than 15 mph over the posted speed limit
30 or Over	5 mph or less	Between 6 and 10 mph	Over 10 mph	
15 or 25	3 mph or less	Between 4 and 10 mph	Over 10 mph	
20	N/A	5 mph or less	Over 5 mph	

Definitions:

- Arterial roadway: Carries the highest traffic volumes and speeds, i.e., Riverside Drive
- Collector Roadway: Carries a moderate amount of traffic volumes and speeds, i.e., Brand Road
- Local Roadway: Provides access multiple driveways and is designated for low volume and slower traffic, i.e., neighborhood streets
- The 85% Speed: Maximum speed at which 85% of the traffic is traveling.



85th Percentile Speed



- Commonly used and universally recognized metric in speed studies and enforcement
- Of 100 drivers, this is the max speed of 85 drivers
- This metric is compared to the posted speed limit
- The higher the difference is between the speed limit and the 85th percentile speed, the higher the speed category
- Higher categories qualify for more aggressive solutions in the Speed Management Toolbox

Speed Management Solutions By Category



Category 1

- Mobile Speed Trailers
- Driver Feedback Signs
- Education & Awareness

Category 2

- Permanent Driver Feedback Signs
- Police Observations and Engagement with Community Members
- Speed Safety Cameras
- Tactical Urbanism
- Education & Awareness

Category 3

- High-Visibility Law Enforcement
- Signs and Markings
- Horizontal Measures
- Streetscape Improvements
- Technology Solutions
- Speed Safety Cameras
- Vertical Measures
- Education & Awareness



Example Included in Program Materials

Speed Limit (mph)	Category 1	Category 2	Category 3	
	85 th Percentile Speed over the Posted Speed Limit (mph)	85 th Percentile Speed over the Posted Speed Limit (mph)	85 th Percentile Speed over the Posted Speed Limit (mph)	<div>Or one percent of motorists are traveling more than 15 mph over the posted speed limit</div>
30 or Over	5 mph or less	Between 6 & 10 mph	Over 10 mph	
15 or 25	3 mph or less	Between 4 & 10 mph	Over 10 mph	
20	N/A	5 mph or less	Over 5 mph	

1. 85% speed over speed limit calculation: $28.67 - 25.00 = 3.67$ mph
2. Round up to 4 mph over posted speed limit
3. Category 2 solutions would apply



Riverside Drive Speed Limit Change

- Council established the Bridge Street/Riverside Drive Business District
- Riverside Drive reduced to 25 mph between Martin Road and Tuller Road
- Enforcement begins Oct. 30.



Neighborhood Safety Updates

Dublin Police Chief
Justin Páez



Dublin Police Department

Protection, service and public safety in partnership with the community

2023 Police Department Goals

- Critical incident response and preparedness
- Theft offense reduction throughout the city
- **Overall traffic safety improvement**
- Effectively address issues of significant community concern



Speed Management Program

**Slow
Down
Dublin**

Nobody wins
when you speed



Police Enforcement

Riverside Drive Speed Limit

- 25 mph (down from 40 mph)
- Warnings issued until Oct. 30

Monthly Campaigns

- General Speeding
- School Zone Limits
- Reckless Driving

Excessive Noise

- Targeted campaign Oct. 9 on Riverside Drive
- Researching new technologies



Community Impact Unit – Traffic Officers



Sergeant Dave Gatterdam

Officer Deron Steinke

Officer Nick Moreland

Officer Joe Popson

Lieutenant Alex Carlson

Officer Matt Willams



Crime Trends



Crimes Trends and Police Response

Year to date, Dublin Police officers have seen

- Increases in theft from vehicles, theft of vehicles
- Increases in burglary and breaking and entering offenses
 - Detectives and investigators continue to hold offenders accountable

Officers have adjusted strategies and tactics to

- Provide theft prevention materials to local hotels
- Increase targeted patrols across the city
- Focus on citywide speed management enforcement



Crime Statistics

Year-to-Date 2023

- **increase** in overall theft offenses
- **increase** in theft **from** vehicle and theft **of** vehicle
- **increase** in traffic stops and OVI arrests
- **increase** in burglary and breaking and entering offenses
- **increase** in Part I serious offenses

YTD 2021, **18** vehicles were stolen
YTD 2022, **40** vehicles were stolen
YTD 2023, **71** vehicles stolen

YTD 2021, **4,494** traffic stops
YTD 2022, **3,694** traffic stops
YTD 2023, **5,519** traffic stops

YTD 2021, **36** burglaries and B&Es
YTD 2022, **30** burglaries and B&Es
YTD 2023, **38** burglaries and B&Es

YTD 2021, **19** Part I violent crimes
YTD 2022, **26** Part I violent crimes
YTD 2023, **29** Part I violent crimes

Year-to-Date: Jan. 1 to Oct. 1



Theft Prevention

LIKE IT?
LOCK IT.



Most **stolen vehicles** were
Kia and Hyundai
models

Remember to
secure firearms
safely in vehicles



Motor Vehicle Theft Prevention



Police Distributing Free Steering Wheel Locks for Kia and Hyundai Owners

Pickup Location:

Dublin Justice Center

Times: 8 a.m. to 5 p.m.

Affected: All Kia and Hyundai models from 2011 to 2021; steel-key and turn-to-start ignitions

Reason: Recent thefts based on Kia and Hyundai models' lack of an immobilizer



Community Outreach and Engagement



The Asian American Commerce Group is excited to announce our 2023 Ohio Asian Award Winners!



DIVERSITY LEADER

Scott Brown

Dublin City Police



Community Events

Upcoming:

Oct. 28 – Drug Take Back

10 a.m. to 2 p.m.

Dublin Justice Center

Dec. 2 – ‘Fill-A-Cruiser’ Holiday Toy Drive

10 a.m. to 1 p.m.

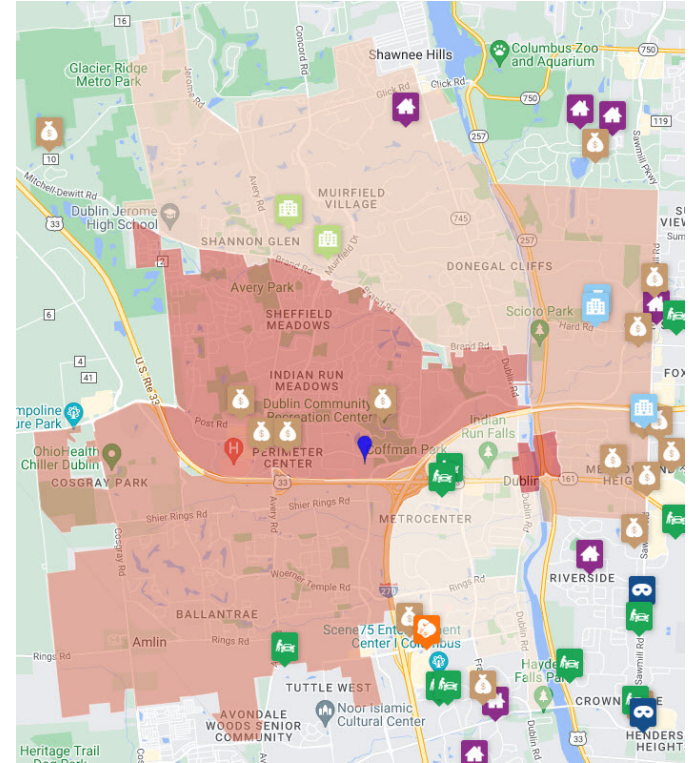
Dublin Justice Center



Community Crime Map

View Crimes in Your Area

- Visit communitycrimemap.com
- Select Dublin
- Receive alerts about recent crime activity
- Submit anonymous tips
- See the source of crime data for any incident by clicking on the incident on the map
- View data using a computer or smartphone



Schedule an HOA conversation or share a testimonial with the Dublin Police

Contact
Administrative Specialist
Becky Metcalf
bmetcalf@dublin.oh.us



Ask a Neighbor



Wrap Up

- On the back of your agenda, you'll find several resources
- Please fill out our survey
- Please save the dates for our 2024 meetings:
 - April 15
 - Oct. 28

