

**CITY OF DUBLIN**  
**REQUEST FOR QUOTATION**

**DEMOLITION AND RE-ESTABLISHMENT**  
**6611 LIGGETT ROAD, DUBLIN OH**

August 25, 2023



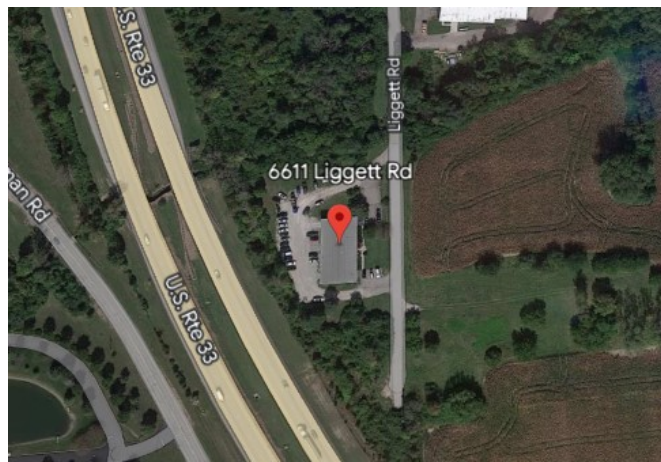
# CITY OF DUBLIN – REQUEST FOR QUOTATION

## DEMOLITION AND RE-ESTABLISHMENT

### 6611 LIGGETT ROAD, DUBLIN OH

#### I. Introduction

The City of Dublin is seeking written responses from licensed qualified firms for this Request for Quotation (RFQ) to provide for the removal of asbestos-containing materials (ACM) and the demolition and disposal of the commercial building, driveway, gravel lot, and any other above ground structure on the parcel identified as 6611 Liggett Road.



- The commercial building at 6611 Liggett Road is a vacant, 7,200 ft<sup>2</sup>, single-story, slab-on-grade structure.
- The exterior is mixed brick, sheet metal, and stucco with a sheet metal roof.
- The interior areas consist of two large shop rooms opening with bay doors, several smaller offices, storage rooms, three restrooms, a breakroom, mechanical room, closets, and hallways.
- According to the asbestos survey, the commercial building contains approx. 240 ft<sup>2</sup> of vinyl and linoleum flooring containing asbestos within rooms 111, 112, 113, 114, and 115.
- The Telecommunications building is a 390 ft<sup>2</sup> modular building.
- There is approx. 2500 yd<sup>2</sup> of asphalt driveway, concrete sidewalk, and gravel lot.

A copy of the Asbestos-Containing Materials Assessment Report is attached.

The report does not include non-visible, or inaccessible asbestos-materials. These materials may be revealed during the course of demolition activities and the Contractor will need to address.

## II. Scope of Services

The following outline includes the service parameters that will be necessary to fulfill the terms of an agreed upon contract:

### 6611 Liggett Road:

This project requires:

- The removal of approx. 240 ft<sup>2</sup> of asbestos-containing tile from the property, disposed of at an OEPA permitted asbestos landfill before any demolition activities that may disturb or dislodge the asbestos containing materials (ACM).
- The demolition and removal of all trash and debris, as well as, any above ground structure on the property including the commercial building, telecommunications modular building, light pole, gates, telecommunication tower, fence, etc.
- The following utility services are known to exist at the property and will require verification of abandonment by the utility company. The contractor will be required to coordinate abandonment/removal to the satisfaction of the utility company and the City:
  - Natural Gas
  - Well
  - Septic
  - Phone and/or cable
  - Electric
- The drainage and removal of natural gas cylinder tank and surrounding fence.
- The removal of all electrical utilities in extension from Liggett Rd. transmission lines.
- Capping of water well to applicable OEPA and ODNR requirements is to be performed by the contractor. Copies of all communication shall be provided to the City of Dublin.
- The performance of all services necessary to abandon existing septic tank and system. Secure permits and necessary approvals from Franklin County Health Department. The City of Dublin will reimburse contractor for all permit fees. Copies of all communication shall be provided to the City of Dublin.
- The removal of commercial building foundation slab, as well as, footers cut 6" below bottom of slab.
- The removal and disposal of telecommunication tower and support system poles 6" below grade.
- The demolition and removal of existing on-site concrete (sidewalk), pavement and gravel areas.

- Trees and foliage of property to remain unchanged and unharmed.
- Use of erosion control measures are required.
- The backfill and grading of all affected land to be fine graded to drain with positive drainage. No ponding or holes are permitting.
- The backfill of all affected land including building foundation, concrete drive, gravel lot, and sidewalk area with 4" of topsoil per Columbus CMS Item 653. (approximately 4800 yd<sup>2</sup>)
  - Track rolled compacted 85% and scarified
- The reseeded and re-establishment of all affected land per Columbus CMS Item 659. (4800 yd<sup>2</sup>)
  - Seeding shall consist of the following:
    - 50 percent Kentucky Bluegrass (POA Pratensis, minimum of two "improved" cultivars.
    - 50 percent Perennial Ryegrass (Loium Perenne)

Contractor Project Responsibilities/Requirements:

- Maintain a safe and clean worksite at the completion of each day of work, keep roadway free of debris and hazards
- Obtain any permits required from any agency including, but limited to the Ohio EPA, ODNR and the Franklin County Board of Health.
- File any forms required by any agency including, but limited to the Ohio EPA, ODNR and the Franklin County Board of Health. Copies of all communication shall be provided to the City of Dublin.
- Submit EPA approved landfill dumping certificate of each load dumped with the final invoice.
- Demonstrate safety program and training needed for project
- Asbestos removal must be performed in accordance with EPA and OSHA regulatory requirements by OPEA-Licensed Asbestos Abatement Contractor using appropriate engineering controls, work methods, respiratory protection and protective clothing.
- Adequate wetting during demolition to suppress dust.
- Contractor will consult all utilities to plan removal of electric lines and telecommunications in extension from transmission lines from property.
- Demonstrate compliance with Prevailing Wage if it is a Prevailing Wage project.

- Conduct all work between the hours of 7:00am and 7:00pm. Monday through Friday and in compliance with the City of Dublin's noise ordinance.
- On-site supervisor during all contracted work
- Emergency numbers available and onsite containing Fire, Ambulance, Police, Utility Companies, and Company contacts
- Provide the City with a copy of an appropriate Certificate of Insurance for a comprehensive general liability policy (occurrence form) including personal injury liability, broad form property damage, operations liability and contractual liability in amount not less than One Million Dollars (\$1,000,000) which covers the direct and indirect acts omissions of the Service Provider, their agents, contractors, employees, members, or guests
- Provide current certificate of workers compensation
- Performance bond in the amount of the contract.

Demolition Schedule:

- The successful contractor will commence work on or after October 1, 2023 and conclude all work within 30 calendar days. All work shall be completed by November 24, 2023.
- Any derivation must be approved in writing and may not be considered as part of the base quote.
- The contractor must provide a detailed work schedule, clearly stating each day's operations.

### III. RFQ Submission Requirements

The following includes information regarding Request for Quotation Submission.

- a. Price Proposal – Provide a cost proposal for delivering the services described in this RFQ. Provide lump sum fee for all work associated with this project.
  - a. Please break out labor and material costs.
  - b. Qualified contractor for asbestos abatement priced separately.
  - c. This is a prevailing wage project.
- b. Deadline for Submission –
  - a. **All quotations must be received by September 15, 2023 at 3:00pm**
- c. Submissions – Quotations shall be submitted via email to:

Brian Gable, P.E.  
Deputy Director – Design & Construction  
6555 Shier Rings Rd.  
614-410-4641  
[bgable@dublin.oh.us](mailto:bgable@dublin.oh.us)
- d. Inquiries/Tours – Inquiries regarding this proposal or requests for additional site visits can be directed to Brian Gable at the email address above. A site visit/walk through is scheduled for September 1, 2023 starting promptly at 1:00pm. We will meet at 6611 Liggett Rd and discuss attached scope of work. We will walk through the areas and discuss any questions you might have. Access to the property prior to the scheduled site visit will be reviewed on a case by case basis.







Figure 1. Commercial Building North



Figure 2. Commercial Building South



Figure 3. Telecommunications Building



Figure 4. Natural Gas Tank



Figure 5. Telecommunication Tower Support (1 of 3)



Figure 6. Telecommunication Tower



April 11, 2023  
23-0886-007

Chris Huber  
City of Dublin  
6555 Shier Rings Road  
Dublin, Ohio 43016  
chuber@dublin.oh.us

**Re: Asbestos-Containing Materials (ACM) Assessment Report**  
Commercial Building and Telecommunications Building - 6611 Liggett Road  
Dublin, Franklin County, Ohio

Dear Mr. Huber,

**CAP-STONE & Associates, Inc. dba STONE Environmental Engineering & Science (STONE)**, is herewith submitting this Asbestos-Containing Materials (ACM) Assessment Report for the referenced buildings (Buildings). The purpose of the assessment was to determine the presence of asbestos-containing materials (ACM) prior to demolition of the buildings. A Vicinity Map illustrating the location of the building is attached as Figure 1.

## **BACKGROUND**

STONE was retained by The City of Dublin (6555 Shier Rings Road, Dublin, Ohio 43016) to conduct an assessment of suspect ACM for the vacant commercial building and vacant telecommunications building located at 6611 Liggett Road in Dublin, Ohio (latitude 40.104984°/longitude -83.176308°).

An ACM is generally defined by state and federal regulations as a material or product containing greater than one percent of one of the six asbestiform varieties (chrysotile, crocidolite, amosite, anthophyllite, tremolite, and actinolite) regulated by the United States Environmental Protection Agency (EPA) and Occupational Health and Safety Administration (OSHA).

The EPA and OSHA regulate the demolition of structures. Code 40 of Federal Regulations (CFR) Part 61, Subpart M, Final Rule, National Emissions Standards for Hazardous Air Pollutants (NESHAP), Ohio Administrative Code (OAC) 3745-20 Asbestos Emission Control, and OAC 3745-22 Asbestos Licensing, require asbestos assessments be performed by accredited individuals prior to all demolitions of structures and renovations that disturb at least 260 linear feet (l.f.) or 160 square feet (ft<sup>2</sup>), or 35 cubic feet (ft<sup>3</sup>) of ACM. Identification of ACM is also required by OSHA 1926.1101. The EPA and OSHA define ACM as materials containing greater than one percent asbestos; however, OSHA also regulates materials containing less than or equal to one percent asbestos.

## **BUILDING DESCRIPTION**

The buildings are located at 6611 Liggett Road in Dublin, Franklin County, Ohio. The commercial building is a vacant, 7,200 ft<sup>2</sup>, single-story, slab-on-grade structure (Photographs 12 and 13). The exterior is mixed brick, sheet metal, and stucco and the roof is sheet metal. Based



on the Franklin County Auditor on-line property information, it is believed the building was constructed during 1979.

The interior areas consist of two large rooms (Photographs 15 and 16) with bay doors, several smaller shop/storage rooms (Photographs 17 and 18), offices (Photographs 19 and 20), three restrooms, a break room, mechanical room, closets, and hallways. The interior walls of the office area consist generally of drywall construction and the exterior walls of the large rooms and shop areas have fiberglass insulation over sheet metal and wood panels. Ceilings are mixed 2'x4' drywall panels or 2'x4' drop ceiling tiles concealing wood, drywall, or metal ceilings (Photograph 23). Fiberglass insulation was noted above ceiling tiles (Photograph 21). Floors are mixed carpet, vinyl floor tile, linoleum, or wood over concrete in the office area. Shop areas have concrete or a blue coating over concrete.

The telecommunications building (Photograph 14) is an approximately 390 ft<sup>2</sup>, modular building. The interior has two rooms with vinyl floor cover over wood (Photograph 24). The age of the building is not known.

## **BUILDING PLANS**

Building plans were not reviewed for this assessment.

## **METHODOLOGY**

On March 21, 2023, Mr. Eric P. Slosser of STONE, Certified Asbestos Hazard Evaluation Specialist (AHES #ES32382) per OAC 3701-34-02, conducted the assessment. All interior rooms and accessible exterior areas were observed to determine the homogeneous areas (HAs) of suspect ACM. Based on EPA definitions used in the Asbestos Hazard Emergency Response Act (AHERA), 40 CFR 763, an HA has the same color, texture, and installation timeframe. The buildings were then assessed for suspect ACMs, including thermal system insulation (TSI), surfacing materials, and miscellaneous materials.

The HAs were categorized as Friable, Category I Non-friable, and Category II Non-friable based on the EPA's NESHAP regulation. Friable material is defined as a material that when dry can be crumbled, pulverized, or reduced to a powder by moderate hand pressure. Non-friable materials are defined as material that when dry cannot be crumbled, pulverized, or reduced to a powder by moderate hand pressure. Non-friable materials are further categorized into Category I Non-friable materials and Category II Non-friable materials. Category I Non-friable materials are packings, gaskets, resilient floor covering, and asphalt roofing products. Category II Non-friable material include all other non-friable materials. All Friable ACM, Category I Non-friable ACM that has become friable, Category I Non-friable ACM that will be, or has been subjected to sanding, grinding, cutting or abrading, or Category II Non-friable ACM that has a high probability of becoming, or has become, crumbled, pulverized, or reduced to powder by the forces expected to act on the material in the course of demolition or renovation operations are considered to be a Regulated Asbestos-Containing Material (RACM). The NESHAP category for each identified ACM is provided on the attached bulk sample logs.

Representative samples of suspected ACMs from each HA were collected. The AHERA category assigned to a specific HA and the quantity determines the bulk sampling protocol. For surfacing materials, if the size of the HA is less than 1,000 ft<sup>2</sup> then a minimum of three bulk samples are collected. If the size of the HA is between 1,000 ft<sup>2</sup> and 5,000 ft<sup>2</sup>,

then a minimum of five bulk samples are collected. If the size of the HA is greater than 5,000 ft<sup>2</sup>, then a minimum of seven bulk samples are collected. For TSI, a minimum of three bulk samples are collected. For areas where insulation is patched, a minimum of one sample shall be collected. For insulating cement, such as fittings, tees and valves, the number of bulk samples is determined by the inspector. Fibrous glass, foam glass, wood, metal, Styrofoam and rubber are not considered suspect ACM unless they potentially cover ACM. Miscellaneous and nonfriable materials are sampled in a manner sufficient as determined by the assessor, with generally a minimum of two samples.

The samples were collected using clean hand-tools and placed in sealable plastic bags. The sample equipment was cleaned between HAs to minimize the potential for cross-contamination. The samples were double-bagged subsequent to collection. Sample locations are illustrated on the attached Figure 2– Sample Location Diagram and the samples are summarized on the attached bulk sample log. Photographs of each HA are included in the attached Photograph Log (Photographs 1 through 11).

The bulk samples were submitted under chain-of-custody to EMSL, a National Voluntary Laboratory Accreditation Program (NVLAP) accredited laboratory (6340 Castleplace Drive, Indianapolis, IN 46250, Phone 713-803-2997) for analysis.

**SAMPLE SUMMARY AND RESULTS**

The bulk samples were analyzed for asbestos via Polarized Light Microscopy (PLM), by EPA Method 600/R-93/116. The laboratory analysis reports the specific type of asbestos mineral identified (if any) and the percentage of asbestos present in each sample. When samples contained different layers of materials, each layer was analyzed separately and the results were reported for each layer.

Non-friable organically bound (NOBs) materials, such as vinyl floor covering, roofing materials, and caulk, may contain small asbestos fibers which may not be detected by PLM. When no asbestos was detected via PLM in the NOBs, or asbestos was detected at 2% or less, the samples were re-analyzed via transmission electron microscopy (TEM) (EPA/600/R-93/116, Section 2.5.5.1) analysis and the results of the TEM analysis were reported. The laboratory data sheets for the PLM and TEM analysis are attached. Based on the analysis, the material summarized in Table 1 is ACM.

<b>TABLE 1 – ASBESTOS-CONTAINING MATERIALS (ACM) 6611 LIGGETT ROAD DUBLIN, FRANKLIN COUNTY, OHIO</b>			
<b>Homogeneous Area</b>	<b>Location</b>	<b>EPA Category &amp; Type</b>	<b>Quantity</b>
Vinyl Floor Cover (Brown, Imitation Wood) with Backing (White) (Photo 4)	Room 111 and Hallways	Non-Friable I/ Miscellaneous	240 ft <sup>2</sup>

Based on the TEM analysis, asbestos was detected at less than one percent in one HA. A material with an asbestos content less than one percent is not classified as an ACM applicable to EPA; however, trace levels of asbestos (less than one percent) in a material is subject to OSHA regulatory requirements, to include, but not limited to, worker protection, using wet methods, proper clean-up, use of proper tools/equipment, engineering controls, etc. The HA containing less than 1% asbestos is summarized in Table 2.

<b>TABLE 2 – MATERIALS CONTAINING LESS THAN 1% ASBESTOS</b> <b>6611 LIGGETT ROAD</b> <b>DUBLIN, FRANKLIN COUNTY, OHIO</b>		
Homogeneous Area	Location	EPA Category & Type
Linoleum (Gray, 12"x12" Ceramic Tile Pattern) (Photo 5)	Restrooms (Rooms 113, 114, and 115) and N Side of Room 112	Non-Friable I/ Miscellaneous

The bulk sample locations are illustrated on the Sample Location Diagram (Figure 2). Representative photographs of the HAs are included on the attached Photograph Log. The bulk analysis laboratory report and chain-of-custody documentation are attached.

According to the Ohio EPA, written notification must be submitted at least ten working days before every demolition of a facility, regardless of whether asbestos is involved, and a renovation when the amount of RACM stripped, removed, dislodged, cut, drilled or similarly disturbed exceeds 260 l.f. on pipes, or 160 ft<sup>2</sup> on other facility components, or 35 ft<sup>3</sup> off facility components. Notification may be submitted online using the Ohio EPA web page at <https://epa.ohio.gov/divisions-and-offices/air-pollution-control/asbestos-abatement-and-demolition/project-notification>. If submitting by hard copy, notification should be completed and both the ACM report and completed notification form should be submitted to the Ohio EPA Division of Air Pollution Control, Central District Office, P.O. Box 1049 Columbus, Ohio 43216 prior to the planned demolition. The EPA has ten working days to respond to the notification.

**LIMITATIONS**

Use of this report by parties other than the client will be at such party’s sole risk. STONE disclaims liability for use or reliance by third parties. The results presented in this report are indicative of conditions only during the time of the sampling period and of the specific areas referenced. Under no circumstances is this report to be used as a bidding document, or as a project design or specification.

STONE performed the services in accordance with generally accepted standard of care in the same geographical area and at the same time. Users of this report should consider the scope and limitations related to these services when developing opinions as to risks associated with the structure.

The possibility exists that suspect materials were undetected in inaccessible or concealed areas such as under multiple flooring layers, and inside pipe chases or wall voids. If additional suspect materials are discovered during the planned destructive activities, bulk samples must be collected by an accredited asbestos hazard evaluation specialist and analyzed for asbestos content.

Thank you for the opportunity to provide asbestos survey services. Please contact STONE if you have any questions or concerns.

Sincerely,

**CAP-STONE & Associates, Inc., dba STONE Environmental Engineering & Science**



Eric P. Slosser, AHES  
Senior Environmental Scientist

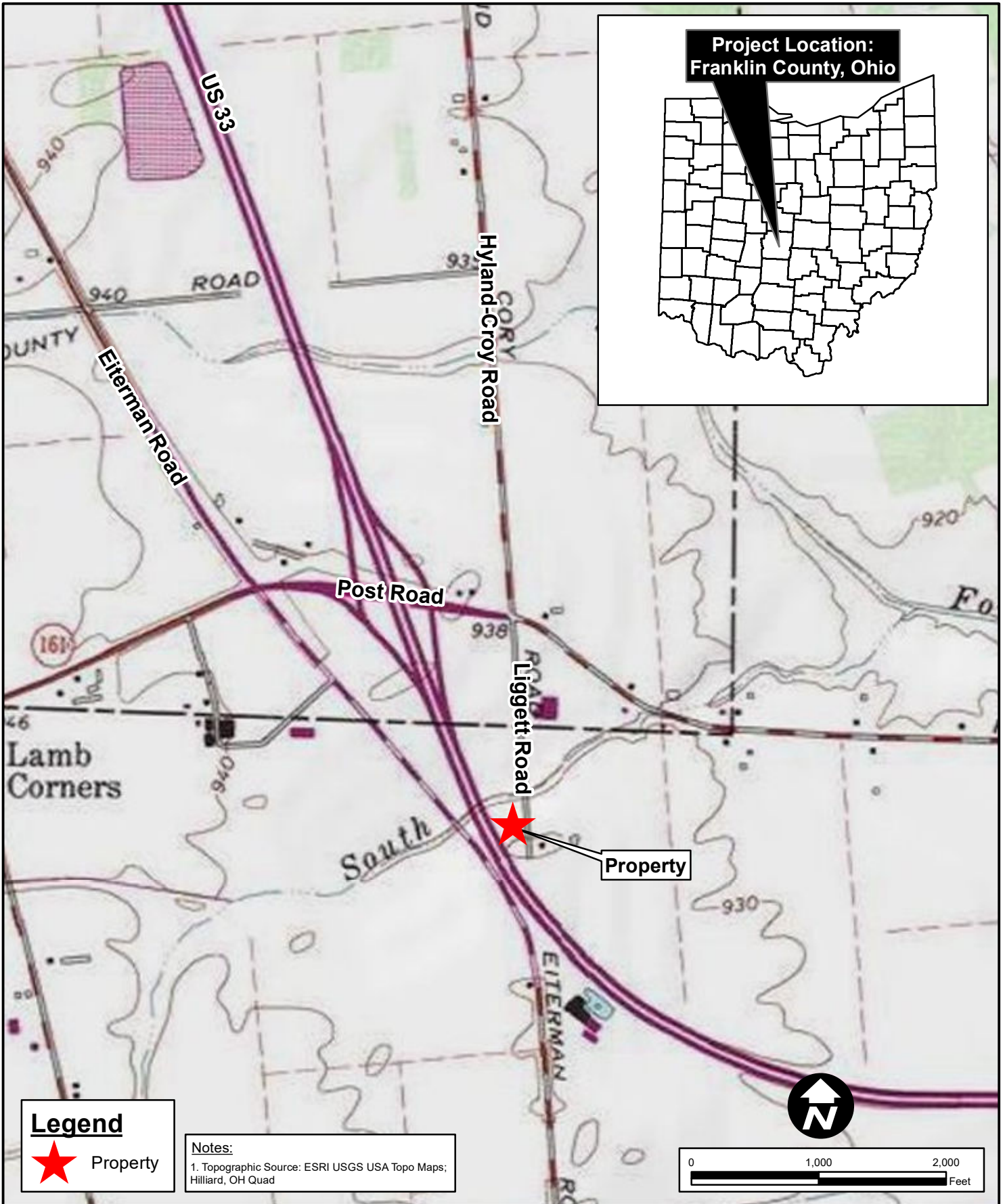



Julie Carpenter, CPG, VAP CP  
Environmental Service Manager

Submitted: 1 electronic copy (PDF) via e-mail

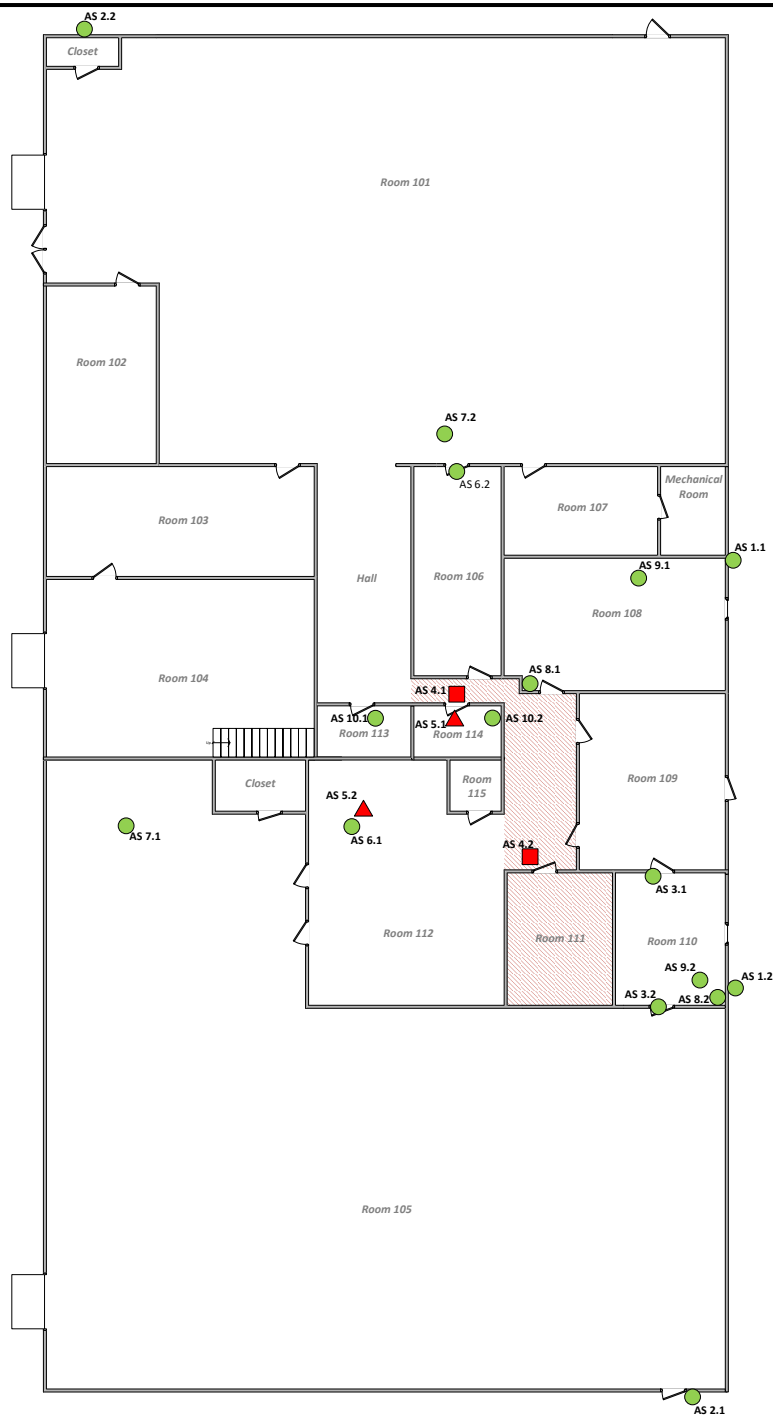
Attachments:

- Figure 1 – Vicinity Map
- Figure 2 – Sample Location Diagram
- Bulk Sample Logs
- Photograph Log
- Bulk Analysis Laboratory Report and Chain-of-custody Documentation
- Certified Asbestos Hazard Evaluation Specialist (AHES) License







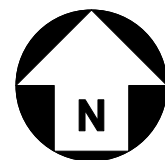
<p><b>Figure 1</b></p>	<p align="center"><b>VICINITY MAP</b>          6611 Liggett Road          Dublin, Franklin County, Ohio</p>	<p align="center">             ENVIRONMENTAL, ENGINEERING &amp; SCIENCE            Date: March 30, 2023         </p>
<p>Drafted By: CO          Reviewed By: EPS</p>		
<p>Project: 23-0886-007</p>		





**Legend**

-  **AS 1.1** Sample ID and Location (Non-ACM)
-  **AS 1.1** Sample ID and Location (ACM)
-  **AS 1.1** Sample ID and Location (<1% Asbestos)
-  ACM Floor Cover



**Figure 2**

Drafted By: CO  
Reviewed By: EPS

Project: 23-0866-007

**SAMPLE LOCATION DIAGRAM**

6611 Liggett Road

Dublin, Franklin County, Ohio



Date: March 27, 2023

STONE ENVIRONMENTAL, ENGINEERING, & SCIENCE  
BULK SAMPLE LOG



Project No: 23-0886-007		Project Name: Liggett Road												
Location: 6611 Liggett Road, Dublin, Ohio						Client: City of Dublin								
Date: 3/21/2023			Accreditation No: ES32382				Inspector: Eric Slosser							
Homogeneous Area Number	Description	Sample Location	Category			Material Type			Quantity	Sample Number	Asbestos Content			Remarks
			Friable	Non-Friable I	Non-Friable II	Surfacing	TSI	Miscellaneous			% Chrysotile	% Other	Less Than 1%	
1	Stucco (Gray) (Photo 1)	Exterior - E Side, Ground Level, N of Door			X			X	N/A	AS1.1				1
		Exterior - E Side, Ground Level, S End of Stucco			X			X		AS1.2				
2	Caulk (Gray) (Photo 2)	Exterior - S Side at Door		X				X	N/A	AS2.1				1
		Exterior - N Side at W End of Bldg.		X				X		AS2.2				
3	Vinyl Floor Tile (White with Gray Mottles, 12"x12") with Mastic (Tan) (Photo 3)	Rm 110, at N Doorway		X				X	N/A	AS3.1				1
		Rm 110, at S Doorway		X				X		AS3.2				
4	Vinyl Floor Cover (Brown, Imitation Wood) with Backing (White) (Photo 4)	Hall Outside Rm 114 (Restroom)		X				X	240 ft <sup>2</sup>	AS4.1	8.2			2 (White Backing Layer)
		Hall Outside Rm 111		X				X		AS4.2	9.4			
5	Linoleum (Gray, 12"x12" Ceramic Tile Pattern) (Photo 5)	Rm 114 (Restroom), Floor at Door		X				X	N/A	AS5.1			0.16	3
		Rm 112, N Side of Floor Near Sink		X				X		AS5.2				
6	Carpet Mastic (Tan) (Photo 6)	Rm 112, Floor at N Side of Room		X				X	N/A	AS6.1				1
		Rm 106 - Floor at N Door		X				X		AS6.2				
7	Floor Coating (Blue) (Photo 7)	Rm 105 - NW Corner of Floor		X				X	N/A	AS7.1				1
		Rm 101 - Floor at Door to Rm 106		X				X		AS7.2				
8	Drywall (White) with Joint Compound (White) (Photo 8)	Rm 108, SW Corner of Walls Above Ceiling Tile			X			X	N/A	AS8.1				1
		Rm 110, SE Corner of Walls			X			X		AS8.2				
9	Drop Ceiling Tile (Gray with White Surface, 2'x4') (Photo 9)	Rm 108, Near Center of Ceiling	X					X	N/A	AS9.1				1
		Rm 110, Near Center of Ceiling	X					X		AS9.2				
10	Cove Base (Beige, 4") with Mastic (Photo 10)	Rm 113 (Restroom), at Door		X				X	N/A	AS10.1				1
		Rm 114 (Restroom), at Door		X				X		AS10.2				
11	Vinyl Floor Tile (Gray, 12"x12") with Mastic (Tan) (Photo 11)	Telephone Modular Bldg. at Door		X				X	N/A	AS11.1				1
		Telephone Modular Bldg. N Side		X				X		AS11.2				

1 - No asbestos detected and the sample is not considered RACM by OEPA standards and is not considered ACM by OSHA standards.  
2 - Greater than 1% asbestos was detected and the sample is considered ACM by EPA and OSHA standards.  
3 - Less than 1%



**1** – HA 1 – Stucco (Gray)



**2** – HA 2 - Caulk (Gray)

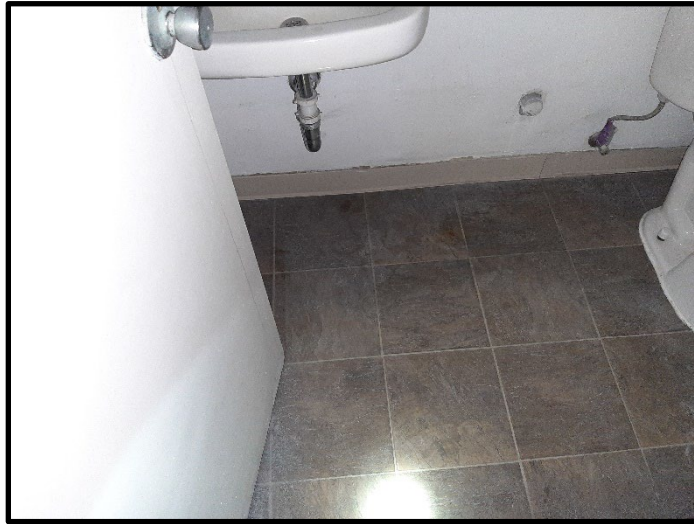


**3** – HA 3 - Vinyl Floor Tile (White with Gray Mottles, 12"x12") with Mastic (Tan)



**4** – HA 4 - Vinyl Floor Cover (Brown, Imitation Wood) with Backing (White)





**5** – HA 5 - Linoleum (Gray, 12"x12" Ceramic Tile Pattern)



**6** – HA 6 – Carpet Mastic (Tan)



**7** – HA 7 – Floor Coating (Blue)



**8** – HA 8 - Drywall (White) with Joint Compound (White)





**9** – HA 9 – Drop Ceiling Tile (Gray with White Surface, 2'x4')



**10** – HA 10 - Cove Base (Beige, 4") with Mastic



**11** – HA 11 - Vinyl Floor Tile (Gray, 12"x12") with Mastic (Tan)



**12** – View of the east and south sides of the building





**13** – View of the north and west sides of the building



**14** – View of the telecommunications building



**15** – View of Room 101



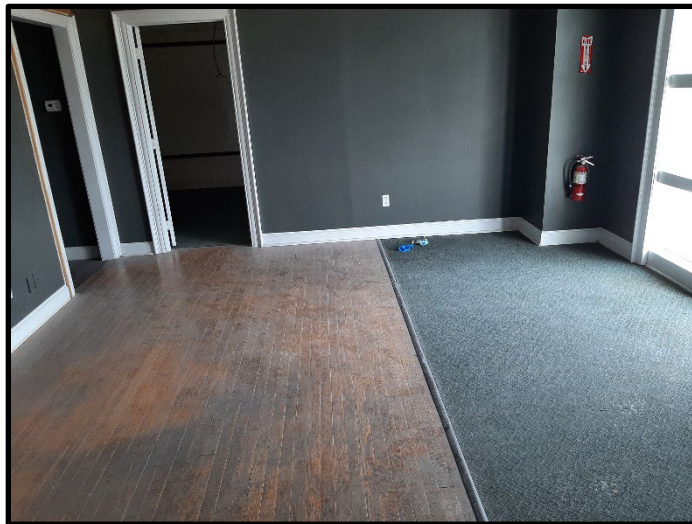
**16** – View of Room 105



**17** – View of Room 104



**18** – View of Room 103



**19** – View of Room 109



**20** – View of Room 106





**21** – View above ceiling tile in office area



**22** – View of ducts with fiberglass insulation above offices



**23** – View of a ceiling at top of the building



**24** – View of inside of the telecommunications building



# EMSL Analytical, Inc.

6340 CastlePlace Dr. Indianapolis, IN 46250

Tel/Fax: (317) 803-2997 / (317) 803-3047

<http://www.EMSL.com> / [indianapolislab@emsl.com](mailto:indianapolislab@emsl.com)

EMSL Order: 162306496

Customer ID: SEES78

Customer PO:

Project ID:

**Attention:** Eric Slosser  
Stone Environmental Engineer. & Science  
748-A Green Crest Drive  
Westerville, OH 43081

**Phone:** (614) 865-1874

**Fax:** (614) 865-1879

**Received Date:** 03/23/2023 9:15 AM

**Analysis Date:** 03/29/2023

**Collected Date:** 03/21/2023

**Project:** Liggett Road - 23-0886-007

## Test Report: Asbestos Analysis of Bulk Materials via AHERA Method 40CFR 763 Subpart E Appendix E supplemented with EPA 600/R-93/116 using Polarized Light Microscopy

Sample	Description	Appearance	Non-Asbestos		Asbestos
			% Fibrous	% Non-Fibrous	% Type
AS1.1 162306496-0001	Stucco (Gray)	Gray Non-Fibrous Homogeneous		20% Quartz 80% Non-fibrous (Other)	None Detected
AS1.2 162306496-0002	Stucco (Gray)	Gray Non-Fibrous Homogeneous		20% Quartz 80% Non-fibrous (Other)	None Detected
AS2.1 162306496-0003	Caulk (Gray)	Brown Non-Fibrous Homogeneous		100% Non-fibrous (Other)	None Detected
AS2.2 162306496-0004	Caulk (Gray)	Brown Non-Fibrous Homogeneous		100% Non-fibrous (Other)	None Detected
AS3.1-Vinyl Floor Tile 162306496-0005	Vinyl Floor Tile (White with Gray Mottles, 12"x12") with Mastic (Tan)	Gray/White Non-Fibrous Homogeneous		100% Non-fibrous (Other)	None Detected
AS3.1-Mastic 162306496-0005A	Vinyl Floor Tile (White with Gray Mottles, 12"x12") with Mastic (Tan)	Tan Non-Fibrous Homogeneous		100% Non-fibrous (Other)	None Detected
AS3.2-Vinyl Floor Tile 162306496-0006	Vinyl Floor Tile (White with Gray Mottles, 12"x12") with Mastic (Tan)	Gray/White Non-Fibrous Homogeneous		100% Non-fibrous (Other)	None Detected
AS3.2-Mastic 162306496-0006A	Vinyl Floor Tile (White with Gray Mottles, 12"x12") with Mastic (Tan)	Tan Non-Fibrous Homogeneous		100% Non-fibrous (Other)	None Detected
AS4.1-Vinyl Floor Cover 162306496-0007	Vinyl Floor Cover (Brown, Imitation Wood) with Backing (White)	Brown/Gray Non-Fibrous Homogeneous		100% Non-fibrous (Other)	None Detected
AS4.1-Mastic 162306496-0007A	Vinyl Floor Cover (Brown, Imitation Wood) with Backing (White)	Yellow Non-Fibrous Homogeneous		100% Non-fibrous (Other)	None Detected
AS4.1-Backing 162306496-0007B	Vinyl Floor Cover (Brown, Imitation Wood) with Backing (White)	White Non-Fibrous Homogeneous		98% Non-fibrous (Other)	2% Chrysotile
AS4.1-Mastic 162306496-0007C	Vinyl Floor Cover (Brown, Imitation Wood) with Backing (White)	Tan Non-Fibrous Homogeneous		100% Non-fibrous (Other)	None Detected
AS4.2-Vinyl Floor Cover 162306496-0008	Vinyl Floor Cover (Brown, Imitation Wood) with Backing (White)	Brown/Black Non-Fibrous Homogeneous		100% Non-fibrous (Other)	None Detected

Initial report from: 03/29/2023 11:07:48



# EMSL Analytical, Inc.

6340 CastlePlace Dr. Indianapolis, IN 46250

Tel/Fax: (317) 803-2997 / (317) 803-3047

<http://www.EMSL.com> / [indianapolislab@emsl.com](mailto:indianapolislab@emsl.com)

EMSL Order: 162306496

Customer ID: SEES78

Customer PO:

Project ID:

## Test Report: Asbestos Analysis of Bulk Materials via AHERA Method 40CFR 763 Subpart E Appendix E supplemented with EPA 600/R-93/116 using Polarized Light Microscopy

Sample	Description	Appearance	Non-Asbestos		Asbestos
			% Fibrous	% Non-Fibrous	% Type
AS4.2-Backing 162306496-0008A	Vinyl Floor Cover (Brown, Imitation Wood) with Backing (White)	White Non-Fibrous Homogeneous		98% Non-fibrous (Other)	2% Chrysotile
AS4.2-Mastic 162306496-0008B	Vinyl Floor Cover (Brown, Imitation Wood) with Backing (White)	Tan Non-Fibrous Homogeneous		100% Non-fibrous (Other)	None Detected
AS5.1-Linoleum 162306496-0009	Linoleum (Gray, 12"x12" Ceramic Tile Pattern)	Gray Fibrous Heterogeneous	20% Cellulose 5% Glass	75% Non-fibrous (Other)	None Detected
AS5.1-Mastic 162306496-0009A	Linoleum (Gray, 12"x12" Ceramic Tile Pattern)	Yellow Non-Fibrous Homogeneous		100% Non-fibrous (Other)	None Detected
AS5.1-Leveler 162306496-0009B	Linoleum (Gray, 12"x12" Ceramic Tile Pattern)	Gray Non-Fibrous Homogeneous		20% Quartz 80% Non-fibrous (Other)	None Detected
AS5.2-Linoleum 162306496-0010	Linoleum (Gray, 12"x12" Ceramic Tile Pattern)	Gray Fibrous Heterogeneous	20% Cellulose	80% Non-fibrous (Other)	None Detected
AS5.2-Mastic 162306496-0010A	Linoleum (Gray, 12"x12" Ceramic Tile Pattern)	Tan Non-Fibrous Homogeneous		100% Non-fibrous (Other)	None Detected
AS6.1-Mastic 162306496-0011	Carpet Mastic (Tan) on Vinyl Floor Tile	Yellow Non-Fibrous Homogeneous		100% Non-fibrous (Other)	None Detected
AS6.1-Vinyl Floor Tile 162306496-0011A	Carpet Mastic (Tan) on Vinyl Floor Tile	Tan Non-Fibrous Homogeneous		100% Non-fibrous (Other)	None Detected
AS6.2 162306496-0012	Carpet Mastic (Tan)	Tan Non-Fibrous Homogeneous		100% Non-fibrous (Other)	None Detected
AS7.1 162306496-0013	Floor Coating (Blue)	Blue Non-Fibrous Homogeneous		100% Non-fibrous (Other)	None Detected
AS7.2 162306496-0014	Floor Coating (Blue)	Blue Non-Fibrous Homogeneous		100% Non-fibrous (Other)	None Detected
AS8.1-Drywall 162306496-0015	Drywall (White) with Joint Compound (White)	Brown/White Fibrous Heterogeneous	30% Cellulose	60% Gypsum 10% Non-fibrous (Other)	None Detected
AS8.1-Joint Compound 162306496-0015A	Drywall (White) with Joint Compound (White)	White Non-Fibrous Homogeneous		100% Non-fibrous (Other)	None Detected
AS8.2-Drywall 162306496-0016	Drywall (White) with Joint Compound (White)	Brown/White Fibrous Heterogeneous	30% Cellulose	60% Gypsum 10% Non-fibrous (Other)	None Detected
AS8.2-Joint Compound 162306496-0016A	Drywall (White) with Joint Compound (White)	White Non-Fibrous Homogeneous		100% Non-fibrous (Other)	None Detected
AS9.1 162306496-0017	Drop Ceiling Tile (Gray with White Surface, 2'x4')	Gray/White Fibrous Homogeneous	50% Cellulose 30% Min. Wool	15% Perlite 5% Non-fibrous (Other)	None Detected
AS9.2 162306496-0018	Drop Ceiling Tile (Gray with White Surface, 2'x4')	Gray/White Fibrous Homogeneous	50% Cellulose 30% Min. Wool	15% Perlite 5% Non-fibrous (Other)	None Detected

Initial report from: 03/29/2023 11:07:48





# EMSL Analytical, Inc.

6340 CastlePlace Dr. Indianapolis, IN 46250

Tel/Fax: (317) 803-2997 / (317) 803-3047

<http://www.EMSL.com> / [indianapolislab@emsl.com](mailto:indianapolislab@emsl.com)

**EMSL Order:** 162306496  
**Customer ID:** SEES78  
**Customer PO:**  
**Project ID:**

## Test Report: Asbestos Analysis of Bulk Materials via AHERA Method 40CFR 763 Subpart E Appendix E supplemented with EPA 600/R-93/116 using Polarized Light Microscopy

Sample	Description	Appearance	Non-Asbestos		Asbestos
			% Fibrous	% Non-Fibrous	% Type
AS10.1-Cove Base <small>162306496-0019</small>	Cove Base (Beige, 4") with Mastic	Beige Non-Fibrous Homogeneous		100% Non-fibrous (Other)	None Detected
AS10.1-Mastic <small>162306496-0019A</small>	Cove Base (Beige, 4") with Mastic	Tan Non-Fibrous Homogeneous		100% Non-fibrous (Other)	None Detected
AS10.2-Cove Base <small>162306496-0020</small>	Cove Base (Beige, 4") with Mastic	Beige Non-Fibrous Homogeneous		100% Non-fibrous (Other)	None Detected
AS10.2-Mastic <small>162306496-0020A</small>	Cove Base (Beige, 4") with Mastic	Tan Non-Fibrous Homogeneous		100% Non-fibrous (Other)	None Detected
AS11.1-Vinyl Floor Cover <small>162306496-0021</small>	Vinyl Floor Cover (Gray, 12"x12") with Mastic (Tan)	Gray Non-Fibrous Homogeneous		100% Non-fibrous (Other)	None Detected
AS11.1-Mastic <small>162306496-0021A</small>	Vinyl Floor Cover (Gray, 12"x12") with Mastic (Tan)	Yellow Non-Fibrous Homogeneous		100% Non-fibrous (Other)	None Detected
AS11.2-Vinyl Floor Cover <small>162306496-0022</small>	Vinyl Floor Cover (Gray, 12"x12") with Mastic (Tan)	Gray Non-Fibrous Homogeneous		100% Non-fibrous (Other)	None Detected
AS11.2-Mastic <small>162306496-0022A</small>	Vinyl Floor Cover (Gray, 12"x12") with Mastic (Tan)	Tan Non-Fibrous Homogeneous		100% Non-fibrous (Other)	None Detected

Analyst(s)

Alison Pacey (21)

Maggie Hayden (18)

Asbestos Laboratory Manager  
or Other Approved Signatory

EMSL maintains liability limited to cost of analysis. Interpretation and use of test results are the responsibility of the client. This report relates only to the samples reported above, and may not be reproduced, except in full, without written approval by EMSL. EMSL bears no responsibility for sample collection activities or analytical method limitations. The report reflects the samples as received. Results are generated from the field sampling data (sampling volumes and areas, locations, etc.) provided by the client on the Chain of Custody. Samples are within quality control criteria and met method specifications unless otherwise noted. The above analyses were performed in general compliance with Appendix E to Subpart E of 40 CFR (previously EPA 600/M4-82-020 "Interim Method") but augmented with procedures outlined in the 1993 ("final") version of the method. This report must not be used by the client to claim product certification, approval, or endorsement by NVLAP, NIST or any agency of the federal government. Non-friable organically bound materials present a problem matrix and therefore EMSL recommends gravimetric reduction prior to analysis. Unless requested by the client, building materials manufactured with multiple layers (i.e. linoleum, wallboard, etc.) are reported as a single sample. Estimation of uncertainty is available on request.

Samples analyzed by EMSL Analytical, Inc. Indianapolis, IN NVLAP Lab Code 200188-0, AZ0939, CA 2575, CO AL-15132, TX 300262, A2LA Accredited - Certificate #2845.25

Initial report from: 03/29/2023 11:07:48



EMSL ANALYTICAL, INC.  
LABORATORY • PRODUCTS • TRAINING

# Asbestos Chain of Custody

EMSL Order Number (Lab Use Only):

162306496

EMSL ANALYTICAL, INC.  
6340 CASTLEPLACE DR.  
INDIANAPOLIS IN, 46250  
713-686-3635 P  
713-686-3645 F

PHONE: 317-803-2997  
FAX: 317-803-3047

Company : Stone Environmental		EMSL-Bill to: <input checked="" type="checkbox"/> Same <input type="checkbox"/> Different <small>If Bill to is Different note instructions in Comments**</small>	
Street: 748 Green Crest Drive		Third Party Billing requires written authorization from third party	
City: Westerville	State/Province: Ohio	Zip/Postal Code: 43081	Country: United States
Report To (Name): Eric Slosser		Fax #:	
Telephone #: 614-865-1874		Email Address: ericslosser@stoneenvironmental.com	
Project Name/Number: Liggett Road - 23-0886-007			
Please Provide Results: <input type="checkbox"/> Fax <input checked="" type="checkbox"/> Email		Purchase Order: _____ U.S. State Samples Taken: Ohio	
<b>Turnaround Time (TAT) Options* – Please Check</b>			
<input type="checkbox"/> 3 Hour	<input type="checkbox"/> 6 Hour	<input type="checkbox"/> 24 Hour	<input type="checkbox"/> 48 Hour
<input type="checkbox"/> 72 Hour	<input type="checkbox"/> 96 Hour	<input checked="" type="checkbox"/> 1 Week	<input type="checkbox"/> 2 Week
<small>*For TEM Air 3 hr through 6 hr, please call ahead to schedule. *There is a premium charge for 3 Hour TEM AHERA or EPA Level II TAT. You will be asked to sign an authorization form for this service. Analysis completed in accordance with EMSL's Terms and Conditions located in the Analytical Price Guide.</small>			
<b>PCM - Air</b> <input type="checkbox"/> NIOSH 7400 <input type="checkbox"/> w/ OSHA 8hr. TWA		<b>TEM - Air</b> <input type="checkbox"/> 4-4.5hr TAT (AHERA only) <input type="checkbox"/> AHERA 40 CFR, Part 763 <input type="checkbox"/> NIOSH 7402 <input type="checkbox"/> EPA Level II <input type="checkbox"/> ISO 10312	
<b>PLM - Bulk (reporting limit)</b> <input checked="" type="checkbox"/> PLM EPA 600/R-93/116 (<1%) <input type="checkbox"/> PLM EPA NOB (<1%) Point Count <input type="checkbox"/> 400 (<0.25%) <input type="checkbox"/> 1000 (<0.1%) Point Count w/Gravimetric <input type="checkbox"/> 400 (<0.25%) <input type="checkbox"/> 1000 (<0.1%) <input type="checkbox"/> NYS 198.1 (friable in NY) <input type="checkbox"/> NYS 198.6 NOB (non-friable-NY) <input type="checkbox"/> NIOSH 9002 (<1%)		<b>TEM - Bulk</b> <input type="checkbox"/> TEM EPA NOB <input type="checkbox"/> NYS NOB 198.4 (non-friable-NY) <input type="checkbox"/> Chatfield SOP <input type="checkbox"/> TEM Mass Analysis-EPA 600 sec. 2.5 <b>TEM - Water: EPA 100.2</b> Fibers >10µm <input type="checkbox"/> Waste <input type="checkbox"/> Drinking All Fiber Sizes <input type="checkbox"/> Waste <input type="checkbox"/> Drinking	
		<b>TEM- Dust</b> <input type="checkbox"/> Microvac - ASTM D 5755 <input type="checkbox"/> Wipe - ASTM D6480 <input type="checkbox"/> Carpet Sonication (EPA 600/J-93/167)	
		<b>Soil/Rock/Vermiculite</b> <input type="checkbox"/> PLM CARB 435 - A (0.25% sensitivity) <input type="checkbox"/> PLM CARB 435 - B (0.1% sensitivity) <input type="checkbox"/> TEM CARB 435 - B (0.1% sensitivity) <input type="checkbox"/> TEM CARB 435 - C (0.01% sensitivity) <input type="checkbox"/> EPA Protocol (Semi-Quantitative) <input type="checkbox"/> EPA Protocol (Quantitative)	
		<b>Other:</b> <input type="checkbox"/>	
<input type="checkbox"/> Check For Positive Stop – Clearly Identify Homogenous Group			
Samplers Name: Eric Slosser		Samplers Signature:	
Sample #	Sample Description	Volume/Area (Air) HA # (Bulk)	Date/Time Sampled
AS1.1	Stucco (Gray)		3/21/2023
AS1.2	Stucco (Gray)		3/21/2023
AS2.1	Caulk (Gray)		3/21/2023
AS2.2	Caulk (Gray)		3/21/2023
AS3.1	Vinyl Floor Tile (White with Gray Mottles, 12"x12") with Mastic (Tan)		3/21/2023
AS3.2	Vinyl Floor Tile (White with Gray Mottles, 12"x12") with Mastic (Tan)		3/21/2023
AS4.1	Vinyl Floor Cover (Brown, Immitation Wood) with Backing (White)		3/21/2023
AS4.2	Vinyl Floor Cover (Brown, Immitation Wood) with Backing (White)		3/21/2023
Client Sample # (s): AS1.1 - AS11.2		Total # of Samples: 22	
Relinquished (Client): Eric Slosser		Date: 3/22/23	Time:
Received (Lab):		Date: 3/23/23	Time: 9:5am

Comments/Special Instructions:

EMSL ANALYTICAL, INC.  
LABORATORY • PRODUCTS • TRAINING**Asbestos Chain of Custody**

EM Page 1 of \_\_\_\_\_ pages (Only):

06496

PHONE:  
FAX*Additional Pages of the Chain of Custody are only necessary if needed for additional sample information*

Sample #	Sample Description	Volume/Area (Air) HA # (Bulk)	Date/Time Sampled
AS5.1	Linoleum (Gray, 12"x12" Ceramic Tile Pattern)		3/21/2023
AS5.2	Linoleum (Gray, 12"x12" Ceramic Tile Pattern)		3/21/2023
AS6.1	Carpet Mastic (Tan) on Vinyl Floor Tile		3/21/2023
AS6.2	Carpet Mastic (Tan)		3/21/2023
AS7.1	Floor Coating (Blue)		3/21/2023
AS7.2	Floor Coating (Blue)		3/21/2023
AS8.1	Drywall (White) with Joint Compound (White)		3/21/2023
AS8.2	Drywall (White) with Joint Compound (White)		3/21/2023
AS9.1	Drop Ceiling Tile (Gray with White Surface, 2'x4')		3/21/2023
AS9.2	Drop Ceiling Tile (Gray with White Surface, 2'x4')		3/21/2023
AS10.1	Cove Base (Beige, 4") with Mastic		3/21/2023
AS10.2	Cove Base (Beige, 4") with Mastic		3/21/2023
AS11.1	Vinyl Floor Cover (Gray, 12"x12") with Mastic (Tan)		3/21/2023
AS11.2	Vinyl Floor Cover (Gray, 12"x12") with Mastic (Tan)		3/21/2023

\*Comments/Special Instructions:



# EMSL Analytical, Inc.

6340 CastlePlace Dr. Indianapolis, IN 46250  
Tel/Fax: (317) 803-2997 / (317) 803-3047  
<http://www.EMSL.com> / [indianapolislaboratory@emsl.com](mailto:indianapolislaboratory@emsl.com)

**EMSL Order:** 162306496  
**Customer ID:** SEES78  
**Customer PO:**  
**Project ID:**

**Attention:** Eric Slosser  
Stone Environmental Engineer. & Science  
748-A Green Crest Drive  
Westerville, OH 43081  
**Phone:** (614) 865-1874  
**Fax:** (614) 865-1879  
**Received Date:** 03/23/2023 9:15 AM  
**Analysis Date:** 04/04/2023  
**Collected Date:** 03/21/2023  
**Project:** Liggett Road - 23-0886-007

## Test Report: Asbestos Analysis of Non-Friable Organically Bound Materials by TEM via EPA/600/R-93/116 Section 2.5.5.1

Sample ID	Description	Appearance	% Matrix Material	% Non-Asbestos Fibers	Asbestos Types
AS3.1-Vinyl Floor Tile 162306496-0005	Vinyl Floor Tile (White with Gray Mottles, 12"x12") with Mastic (Tan)	Gray/White Non-Fibrous Homogeneous	100.0 Other	None	No Asbestos Detected
AS4.1-Backing 162306496-0007B	Vinyl Floor Cover (Brown, Imitation Wood) with Backing (White)	White Non-Fibrous Homogeneous	91.8 Other	None	8.2% Chrysotile
AS4.2-Backing 162306496-0008A	Vinyl Floor Cover (Brown, Imitation Wood) with Backing (White)	White Non-Fibrous Homogeneous	90.6 Other	None	9.4% Chrysotile
AS5.1-Linoleum 162306496-0009	Linoleum (Gray, 12"x12" Ceramic Tile Pattern)	Gray Fibrous Heterogeneous	99.84 Other	None	0.16% Chrysotile
AS11.1-Vinyl Floor Cover 162306496-0021	Vinyl Floor Cover (Gray, 12"x12") with Mastic (Tan)	Gray Non-Fibrous Homogeneous	100.0 Other	None	No Asbestos Detected

Analyst(s)  

---

Paul Rihm (5)

---

Melissa Newkirk  
Asbestos Laboratory Manager  
or other approved signatory

EMSL maintains liability limited to cost of analysis. Interpretation and use of test results are the responsibility of the client. This report relates only to the samples reported above, and may not be reproduced, except in full, without written approval by EMSL. EMSL bears no responsibility for sample collection activities or analytical method limitations. The report reflects the samples as received. Results are generated from the field sampling data (sampling volumes and areas, locations, etc.) provided by the client on the Chain of Custody. Samples are within quality control criteria and met method specifications unless otherwise noted. EMSL recommends that samples reported as none detected or <1% undergo additional analysis via PLM to avoid the possibility of false negatives.

Samples analyzed by EMSL Analytical, Inc. Indianapolis, IN

Initial report from: 04/06/2023 09:15:45



# TRAINING SERVICES INTERNATIONAL

## Asbestos Building Inspector Refresher

### Certificate

This is to certify

**Eric P. Slosser**

**XXX-XX-3406**



has attended and successfully completed the Asbestos Hazard Emergency Response Act mandatory course for the Asbestos Building Inspector Refresher and has passed an examination in that course with a minimum score of 70% or better. Training was in accordance with 40 CFR Part 763 (AHERA). The above student received the requisite training for asbestos accreditation under Title II of the Toxic Substances Control Act and State of Indiana requirements under 326 IAC 18-2 and Chapter 3745-22 Ohio Administrative Code. and the Illinois Department of Public Health (IDPH) under section 855.120 of Title 77. IDPH recognition based on student request.

Training Manager

1/4/24

Expiration Date

1/4/23

Date(s) of Course

1/4/2023

Examination Date

Columbus, OH

Course Location

33150 Lakeland Blvd.  
Cleveland, OH 44095  
www.TSItraining.com

Course Certificate No.

**23 TSI 418588 ir**





# TRAINING SERVICES INTERNATIONAL

## Asbestos Management Planner Refresher

### Certificate

This is to certify

**Eric P. Slosser**

**XXX-XX-3406**



has attended and successfully completed the Asbestos Hazard Emergency Response Act mandatory course for the Asbestos Management Planner Refresher and has passed an examination in that course with a minimum score of 70% or better. Training was in accordance with 40 CFR Part 763 (AHERA). The above student received the requisite training for asbestos accreditation under Title II of the Toxic Substances Control Act and State of Indiana requirements under 326 IAC 18-2 and Chapter 3745-22 Ohio Administrative Code. and the Illinois Department of Public Health (IDPH) under section 855.120 of Title 77. IDPH recognition based on student request.

1/4/24

1/4/23

1/4/2023

Columbus, OH

Training Manager

Expiration Date

Date(s) of Course

Examination Date

Course Location



**Mike DeWine**, Governor  
**Jon Husted**, Lt. Governor  
**Laurie A. Stevenson**, Director

6/23/2022

Eric Slosser  
16109 Hawn Road  
Plain City, OH 43061

RE: Evaluation Specialist  
Certification Number: ES32382  
Expiration Date: 7/15/2023

Dear Eric Slosser:

This letter and enclosed certification card approves your request to be certified as an asbestos Evaluation Specialist. You must present your card upon request at any project site while performing duties. Copies of cards are not acceptable as proof of certification.

This certification may be revoked by the Director of the Ohio Environmental Protection Agency (EPA) for violation of any of the requirements of 3745-22 or 3745-20 of the Ohio Administrative Code.

If you have any questions, please contact the Asbestos Program at 614-644-0226 or by email at [asbestoslicensing@epa.ohio.gov](mailto:asbestoslicensing@epa.ohio.gov).

Sincerely,

Joshua S. Koch  
Manager, Business Operations Support Section  
Ohio EPA - Division of Air Pollution Control

State of Ohio  
Environmental Protection Agency  
Asbestos Program

**Asbestos Hazard Evaluation Specialist**

Eric P  
Slosser



16109 Hawn Road  
Plain City OH 43061

Certification Number: **ES32382**      Expiration Date: **7/15/23**



DOB: 10/14/66  
Card not Valid  
if Altered

Suite 700 • P.O. Box 1049 • Columbus, OH 43216-1049  
Tel • (614) 644-3020 • (614) 644-3184 (fax)