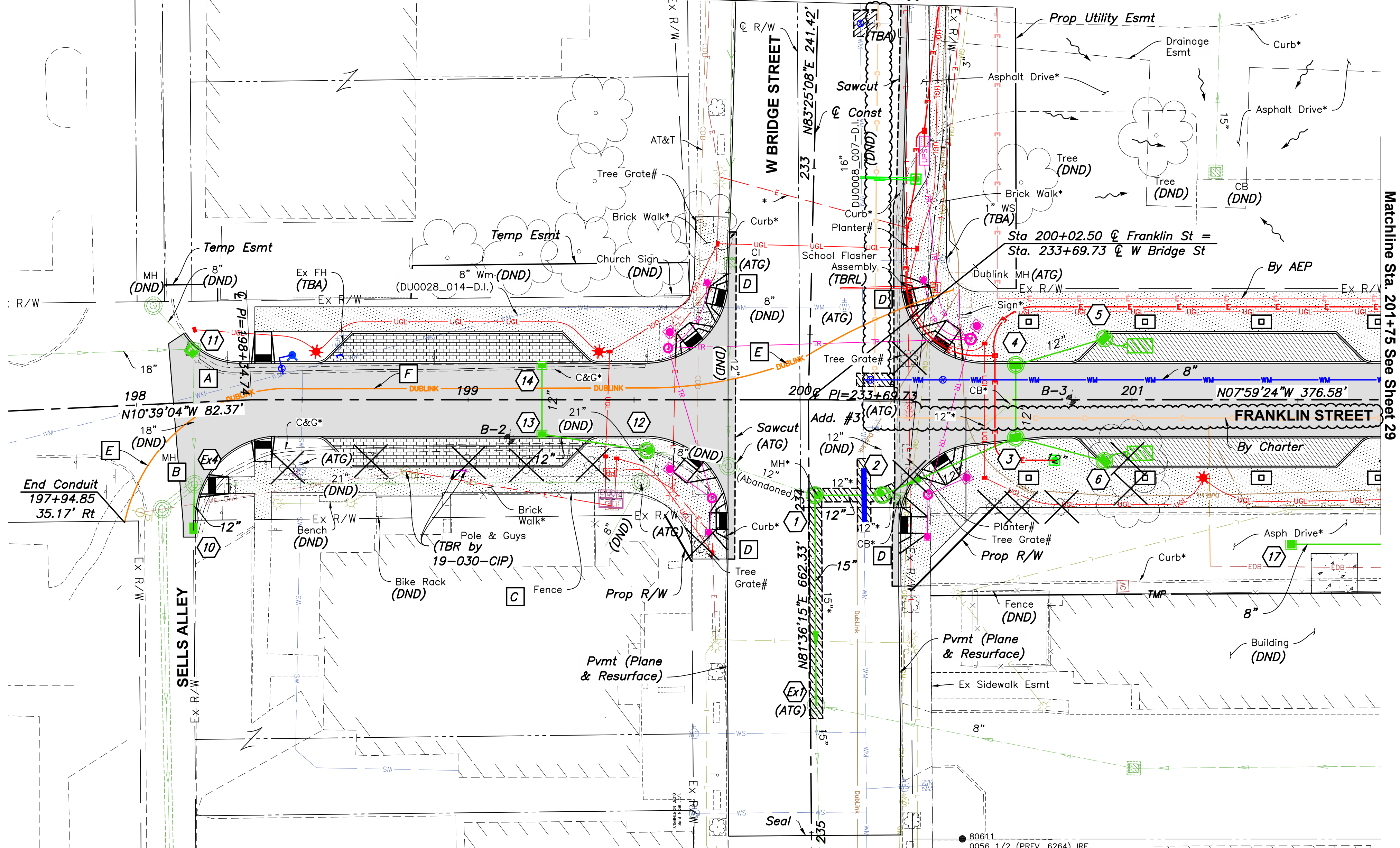
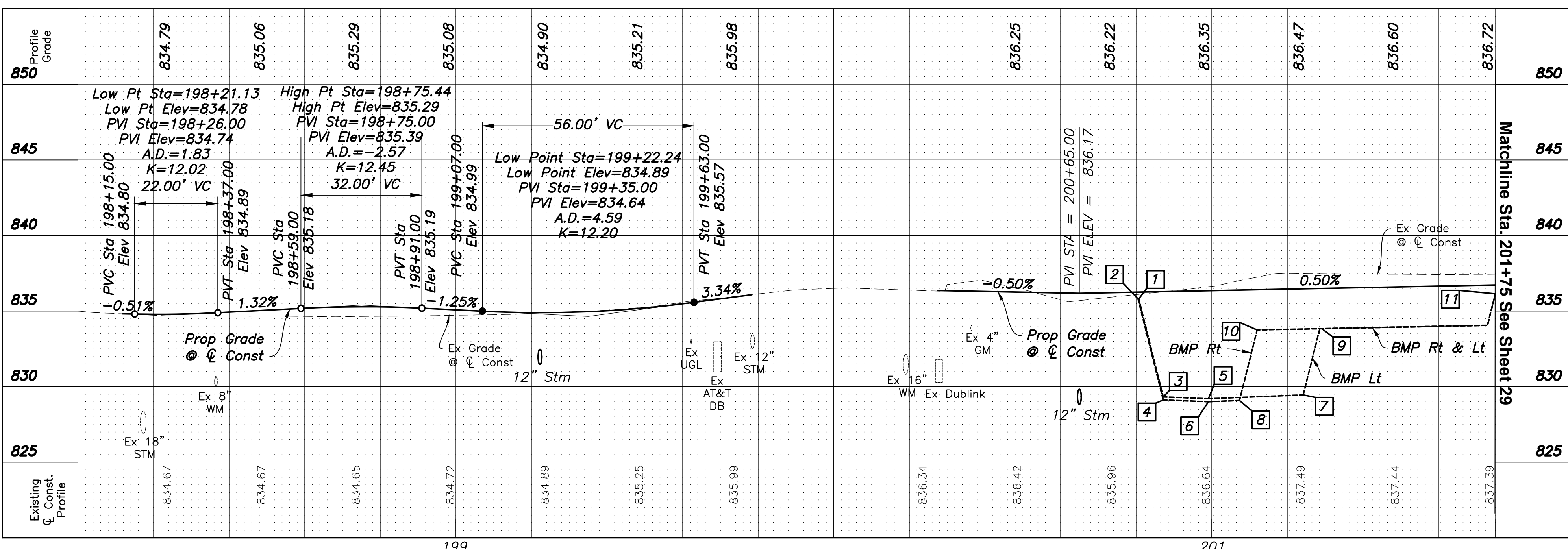


Matchline Sta. 232+50 See Sheet 30



- Provide positive drainage to existing Catch Basin.
- A** Reconstruct to grade with curb and gutter inlet casting AA-S128 TC=835.10 Sta. 198+17.81, 16.04 Lt.
- B** Reconstruct MH to grade solid lid TC=834.17 Sta. 198+16.43, 24.63 Lt.
- C** Existing Metal Fence to be removed and reset and brick patio to be removed and reset as directed to facilitate walk construction.
- D** End concrete curb and begin granite curb at outside edge of curb ramp flares to blend new brick walk to existing.
- E** (1) - 4" Conduit Jacked/Drilled
- F** (1) - 4" Conduit in Trench

Station	Elevation
1	200+80.70 835.81
2	200+80.50 835.81
3	200+87.19 829.32
4	200+87.19 829.12
5	200+99.14 829.20
6	200+99.14 829.00
7	201+24.22 829.45
8	201+07.36 829.08
9	201+28.60 833.83
10	201+12.03 833.75
11	201+75.00 836.14



**Legend**

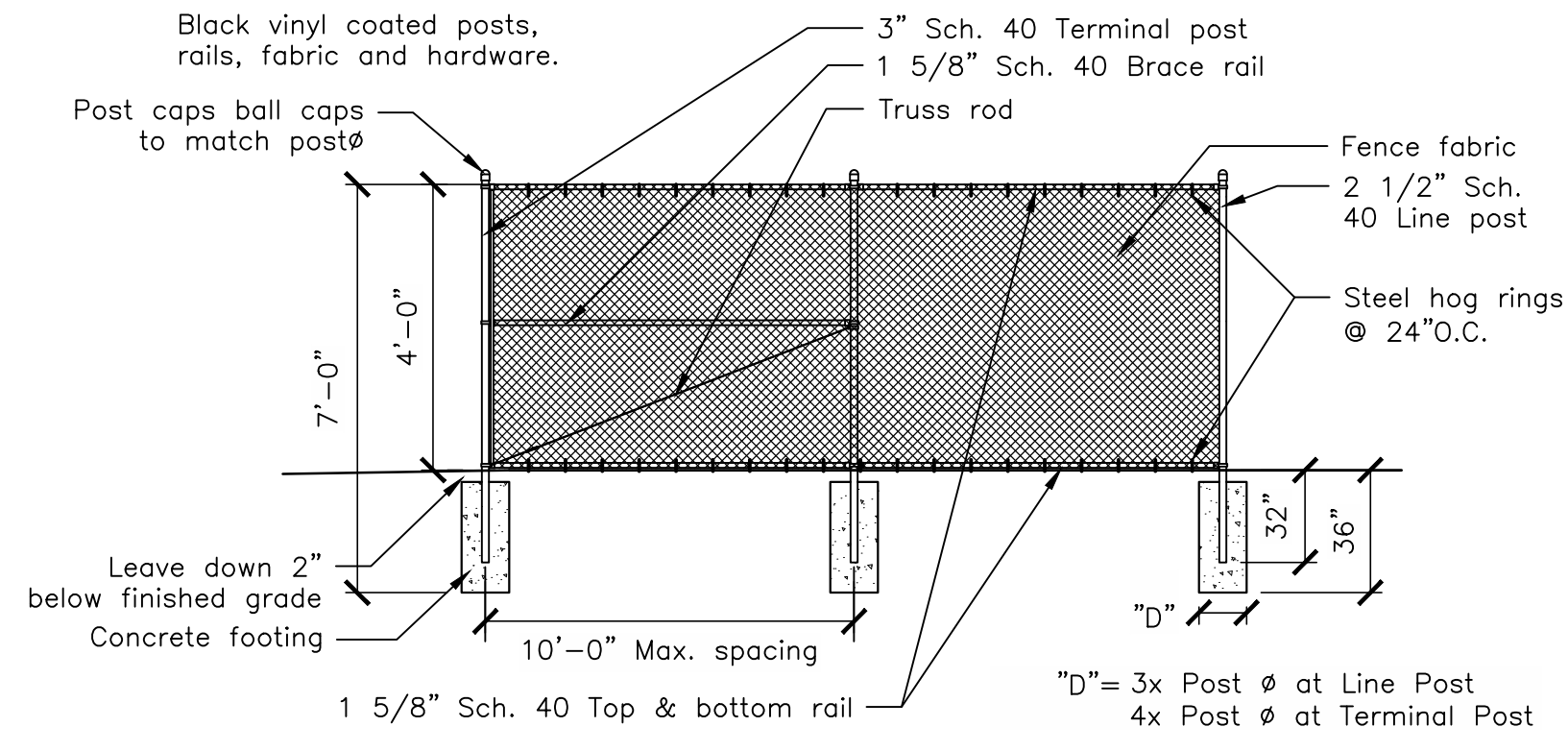
- Permeable Paver Parking
- Brick Crosswalk / Driveway
- Paver Sidewalk
- Pavement Repair per COC Std Dwg 1441
- Full Depth Pavement
- Tree Grate
- Tree and Grate Removed
- \* = (TBR)
- # = (Remove for Storage)
- = Prop WM Lowering

**FRANKLIN STREET EXTENSION**

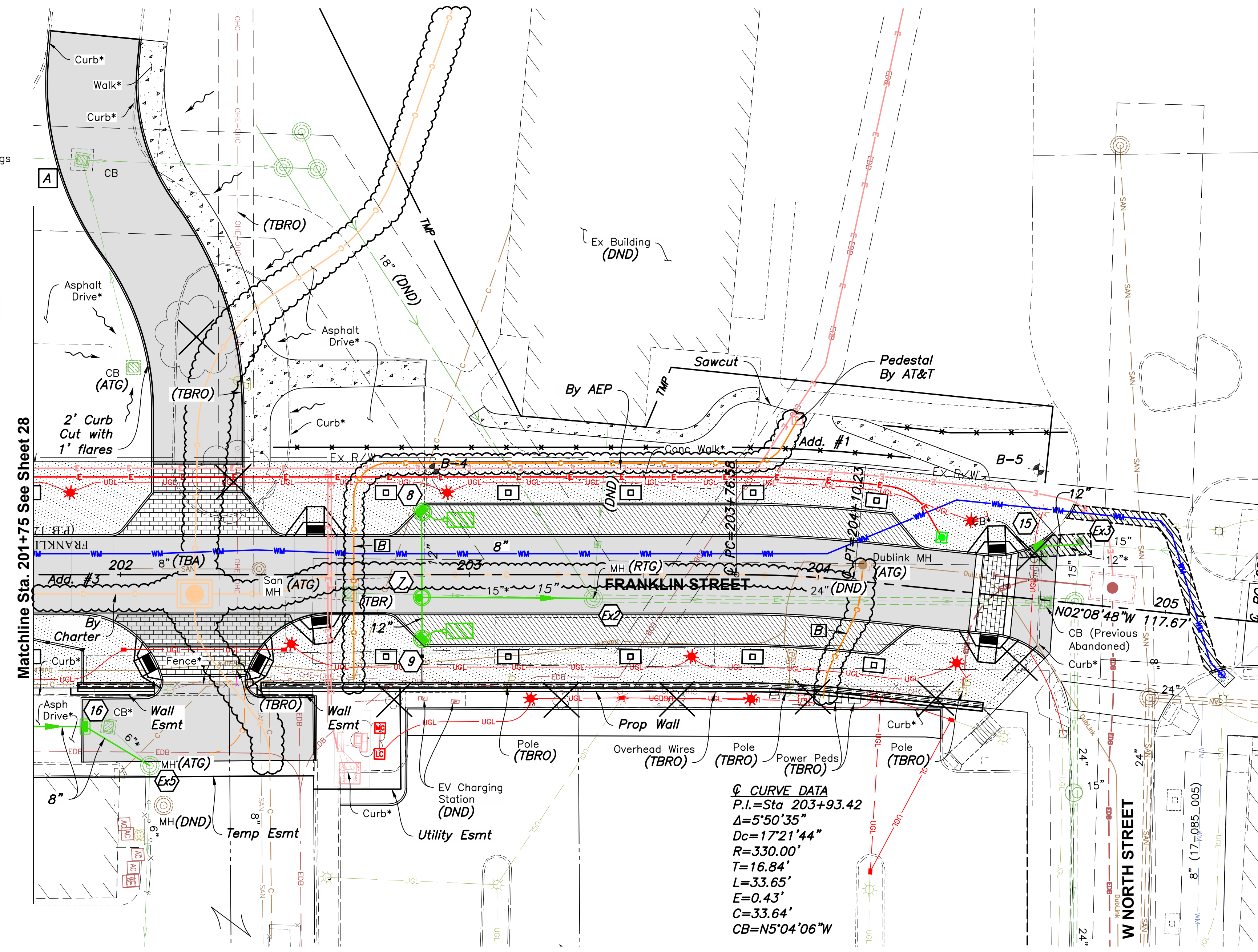
28  
87

J:\2021\405\Drawings\Sheets\2021\405\9001.dwg, Last Saved By: msheehar, 10/28/2022 3:38 PM, Last Printed By: Scheer, Matthew, 10/28/2022 3:41 PM (No Xrefs)



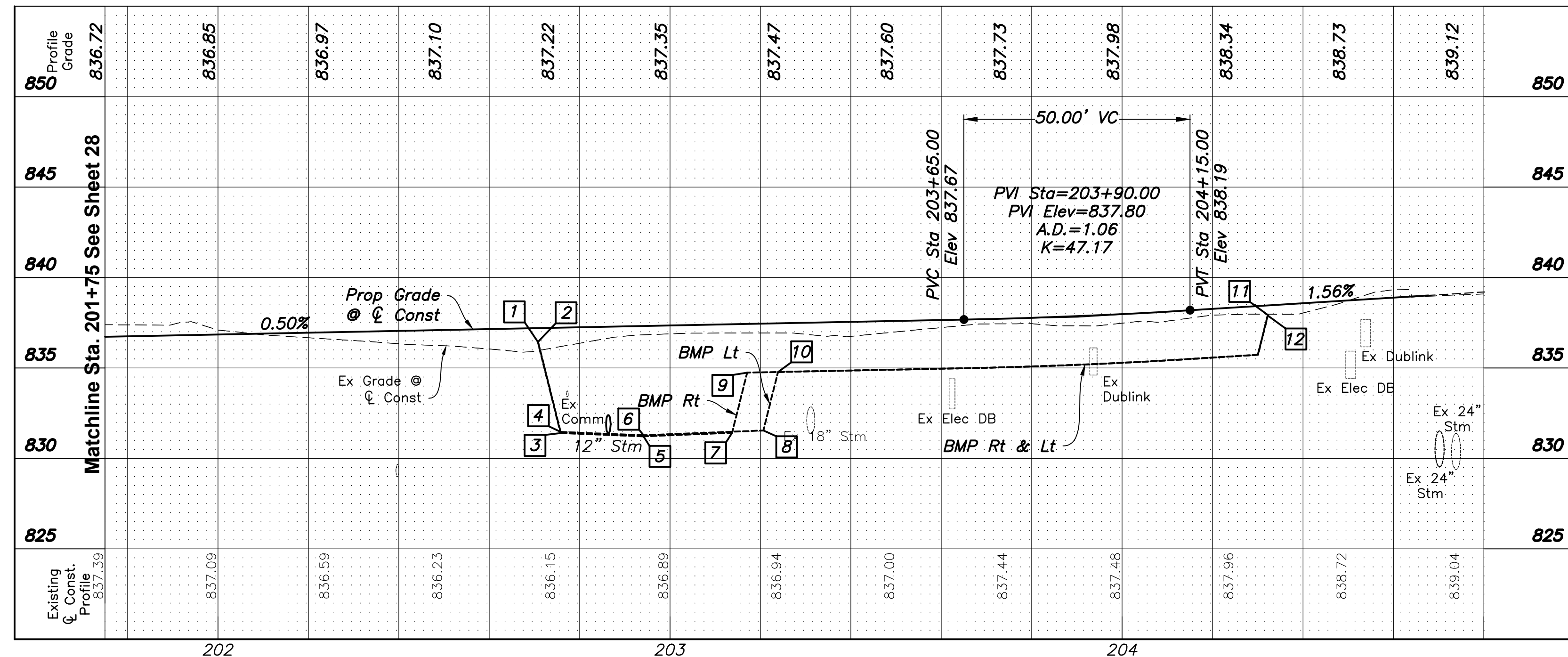


**Typical Chainlink Fence**  
No Scale



- A** Reconstruct to grade with MH casting AA-S112  
TC=838.90  
Sta. 201+89.00, 118.81' Lt.
- B** (1) - 4" Conduit in Trench

- Legend**
- Permeable Paver Parking
  - Paver Sidewalk
  - Brick Crosswalk / Driveway
  - Pavement Repair per COC Std Dwg 1441
  - Full Depth Pavement
  - Concrete Walk (T=4")
  - Tree and Grate Removed
  - Tree Grate
  - \* = (TBR)
  - Prop Fence (See Detail This Sheet)



Station	Elevation
1	202+71.74 836.44
2	202+71.80 836.44
3	202+75.78 831.40
4	202+75.78 831.46
5	202+94.11 831.22
6	202+94.11 831.28
7	203+13.72 831.42
8	203+20.64 831.55
9	203+17.05 834.75
10	203+23.87 834.78
11	204+32.22 837.93
12	204+32.23 837.90

J:\2021\405\DWG\05\Sheets\2021\405\001.dwg, Last Saved By: mscheer, 10/28/2022 3:49 PM, Last Printed By: Scheer, Matthew, 10/28/2022 3:52 PM (No Xrefs)