

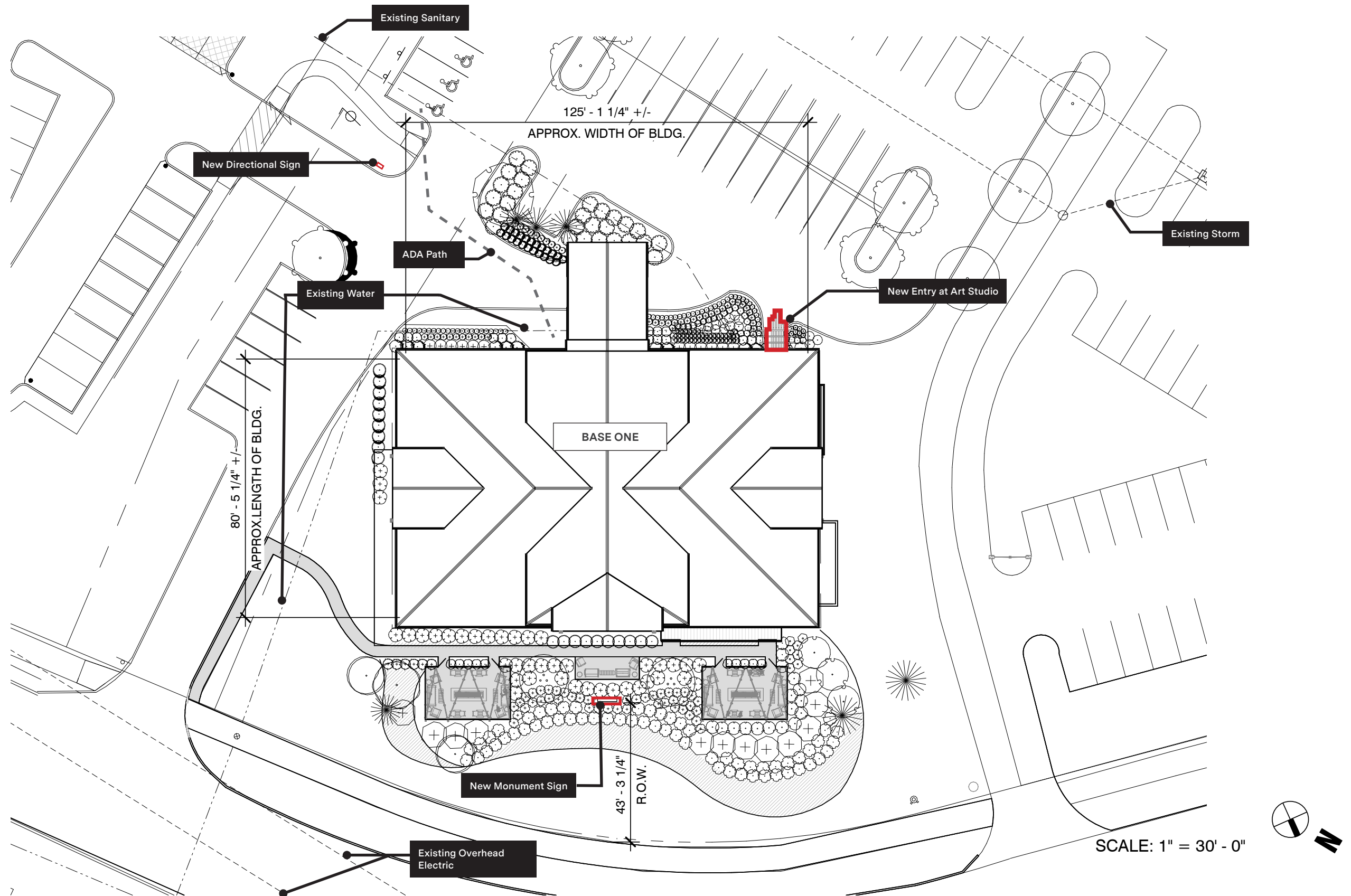


## PENZONE BASE ONE

---

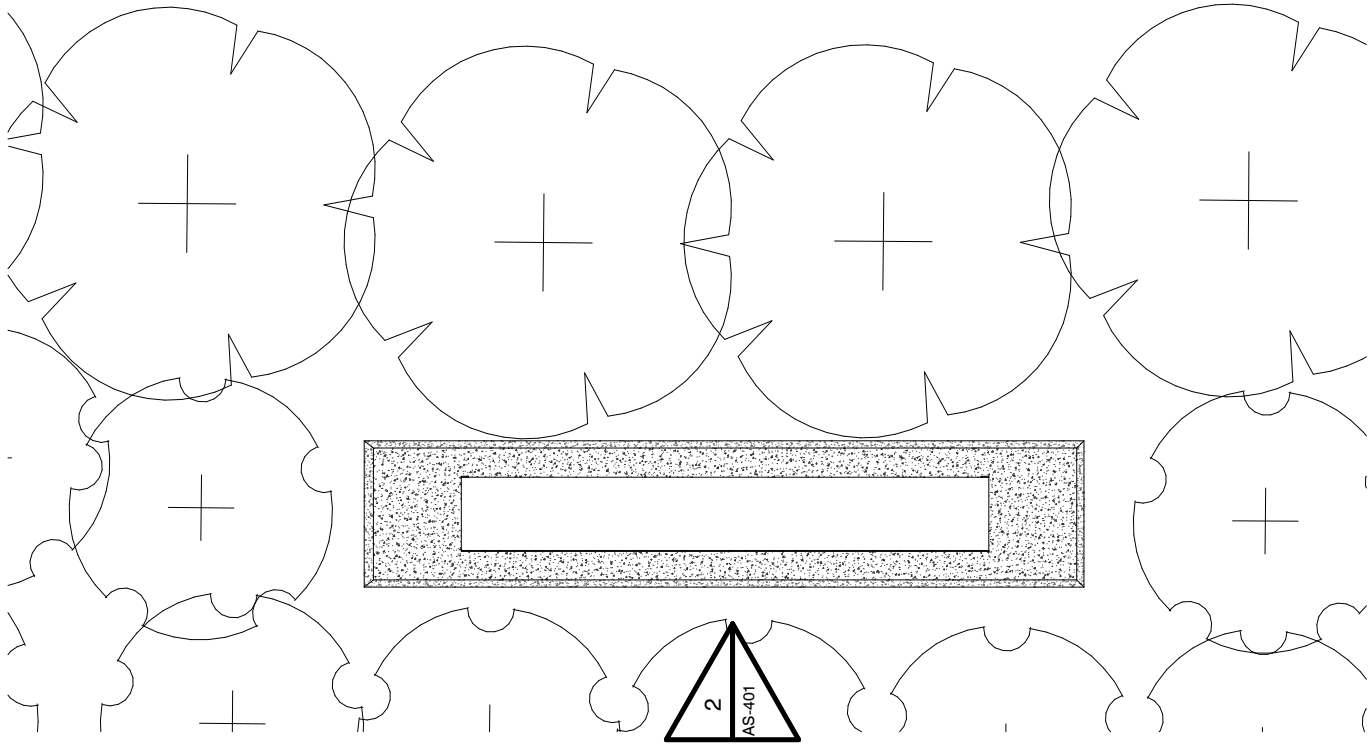
DUBLIN SIGN PACKAGE

MAY 15TH, 2023



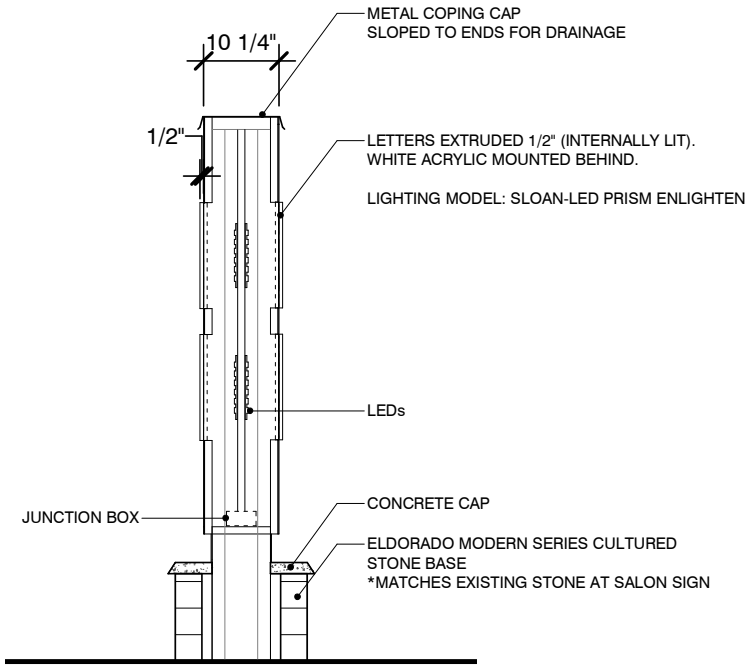


NIGHT TIME  
RENDERED VIEW

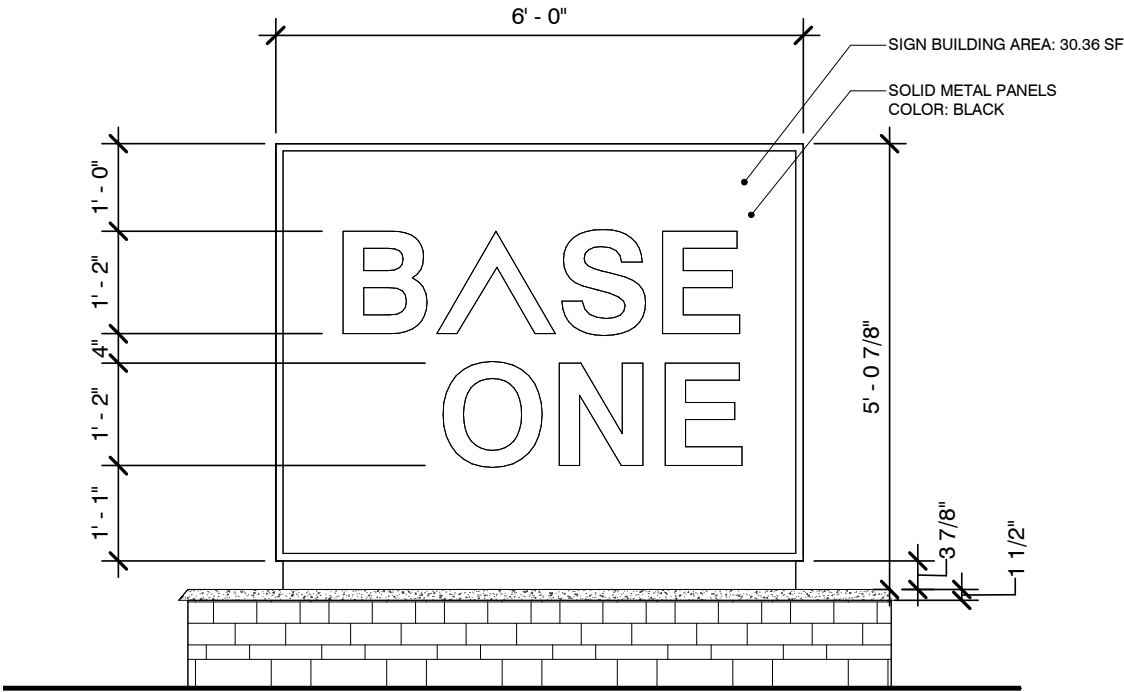


NEW SIGN- BASE ONE  
scale 1/2" = 1'-0"

:



SECTION  
scale 1/2" = 1'-0"



ELEVATION  
scale 1/2" = 1'-0"

:





BACK VIEW

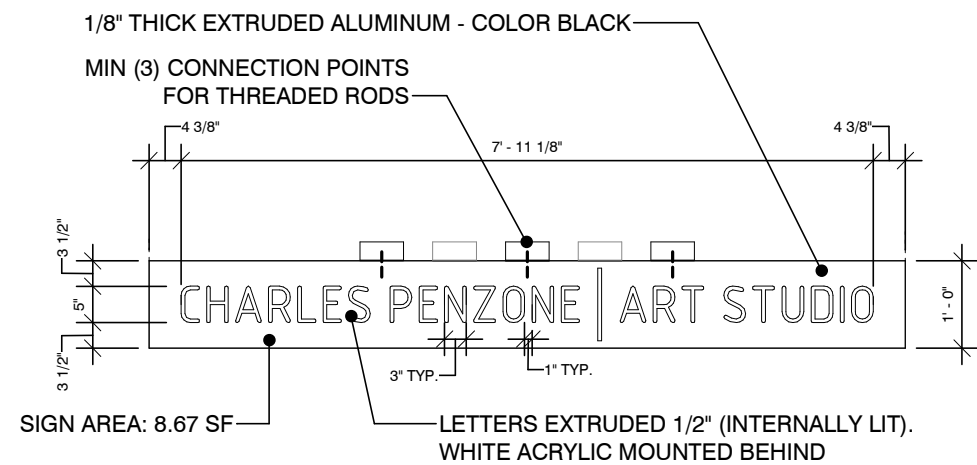


FRONT VIEW



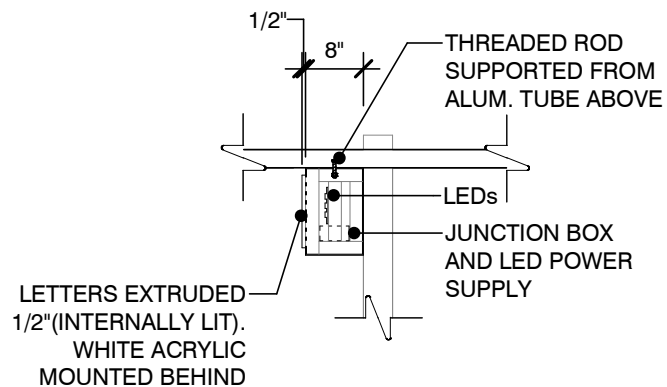




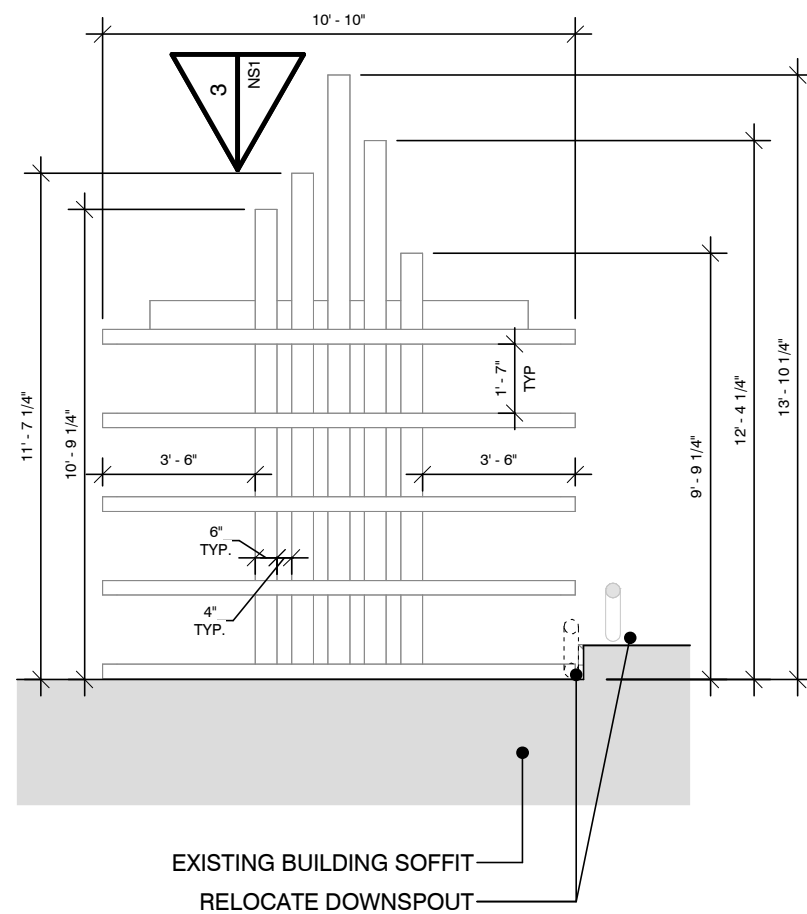
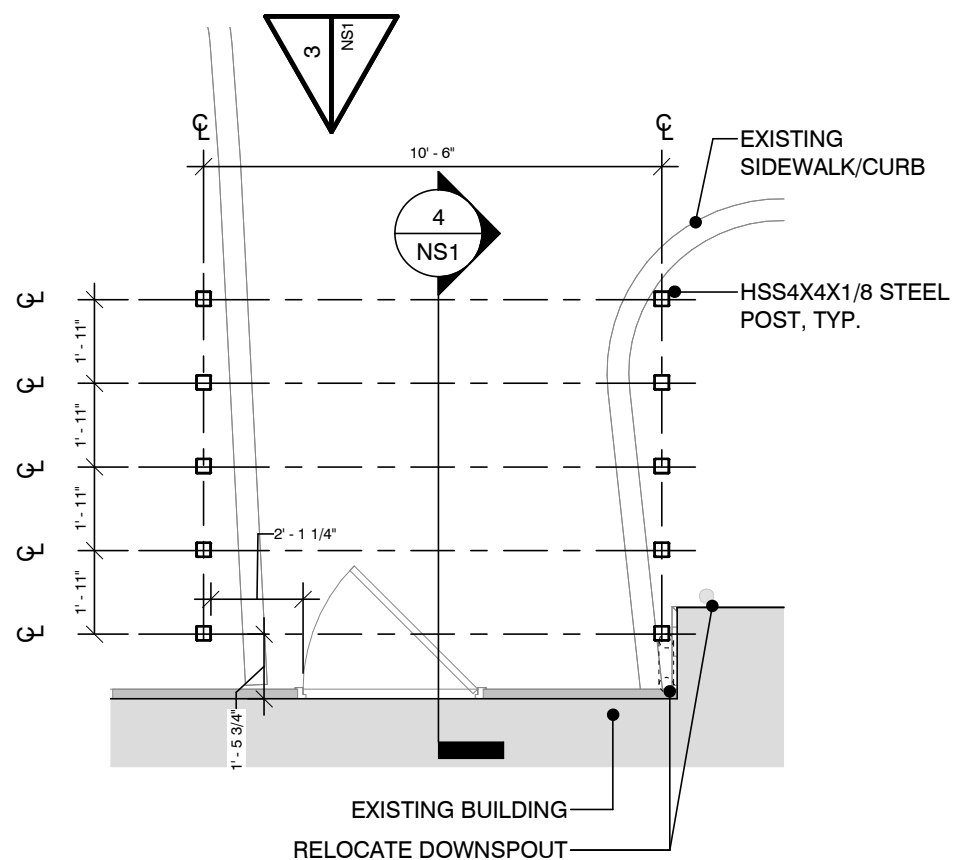
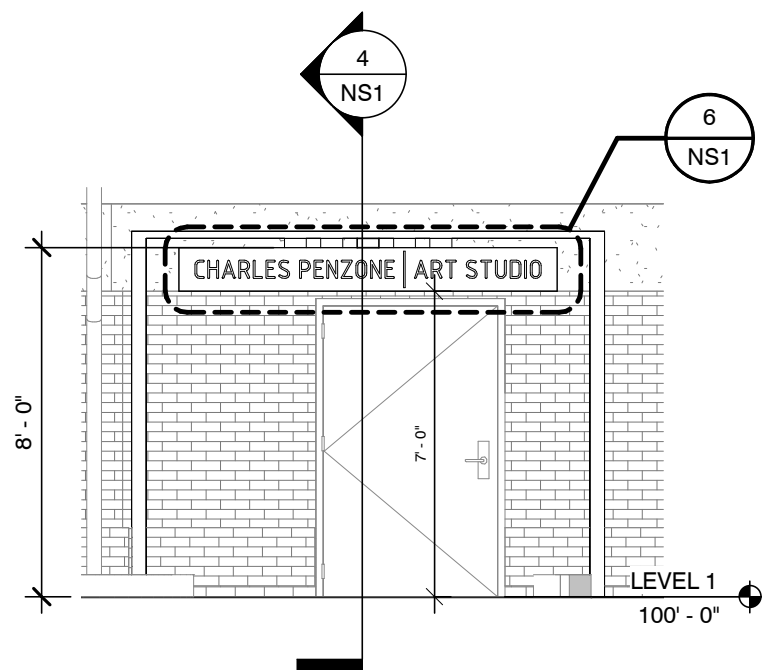
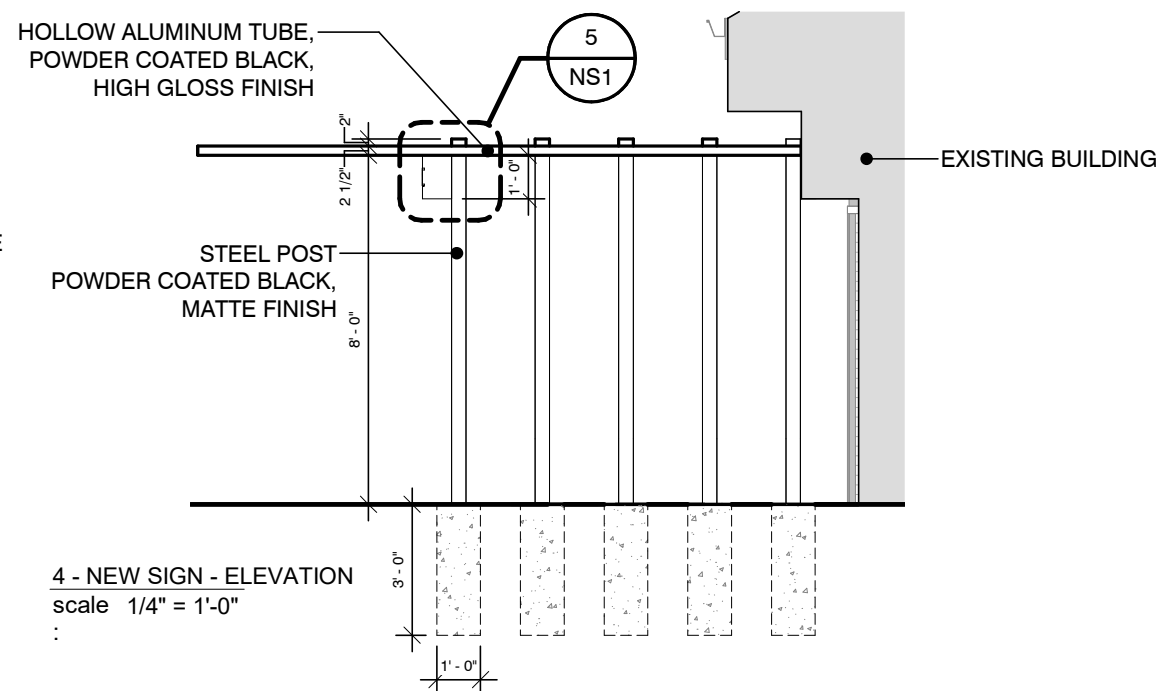


6 - NEW SIGN - ELEVATION  
scale 1/2" = 1'-0"

LIGHTING MODEL: SLOAN-LED PRISM ENLIGHTEN



5 - NEW SIGN - ELEVATION  
scale 1/2" = 1'-0"









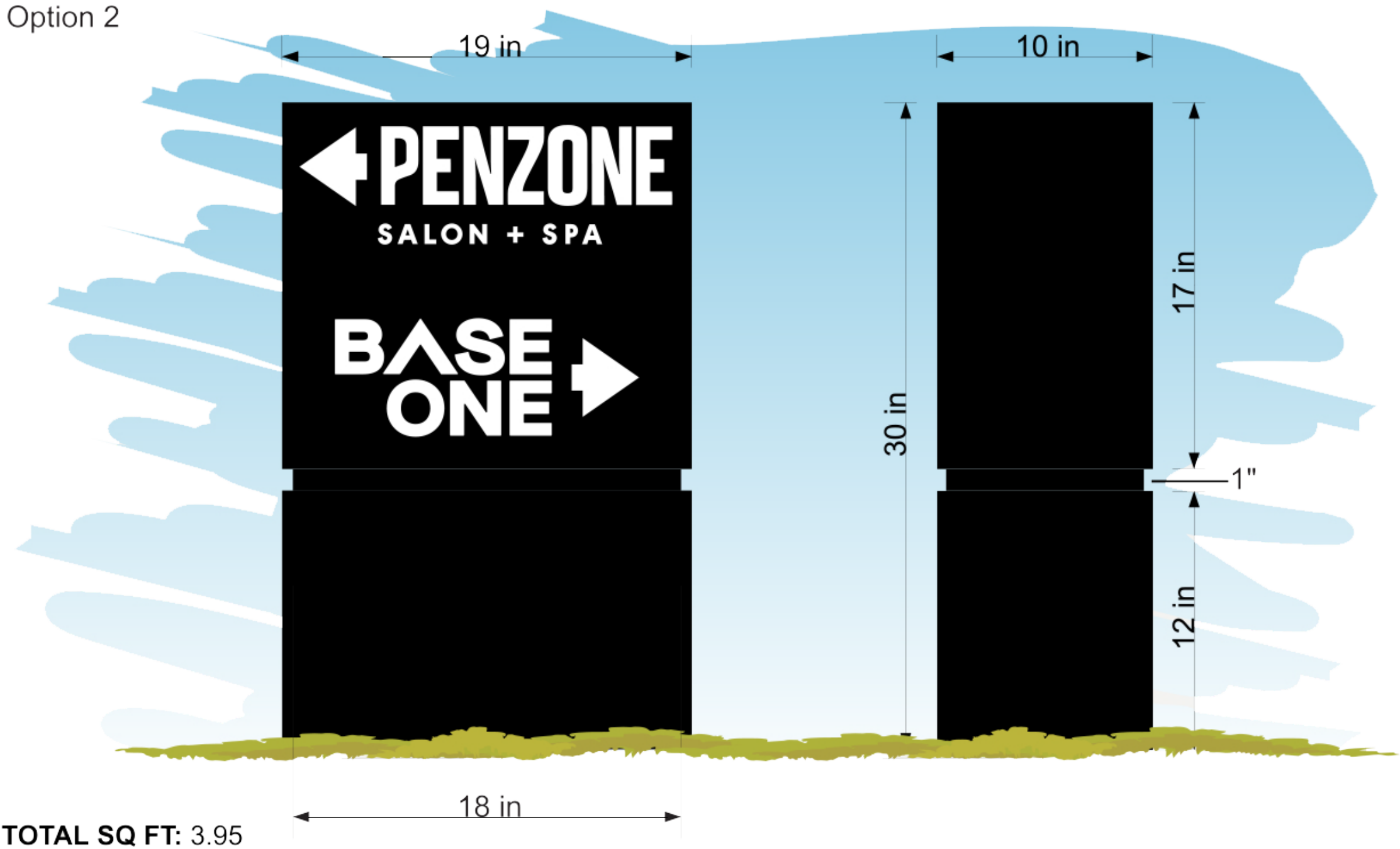




**DESCRIPTION:**

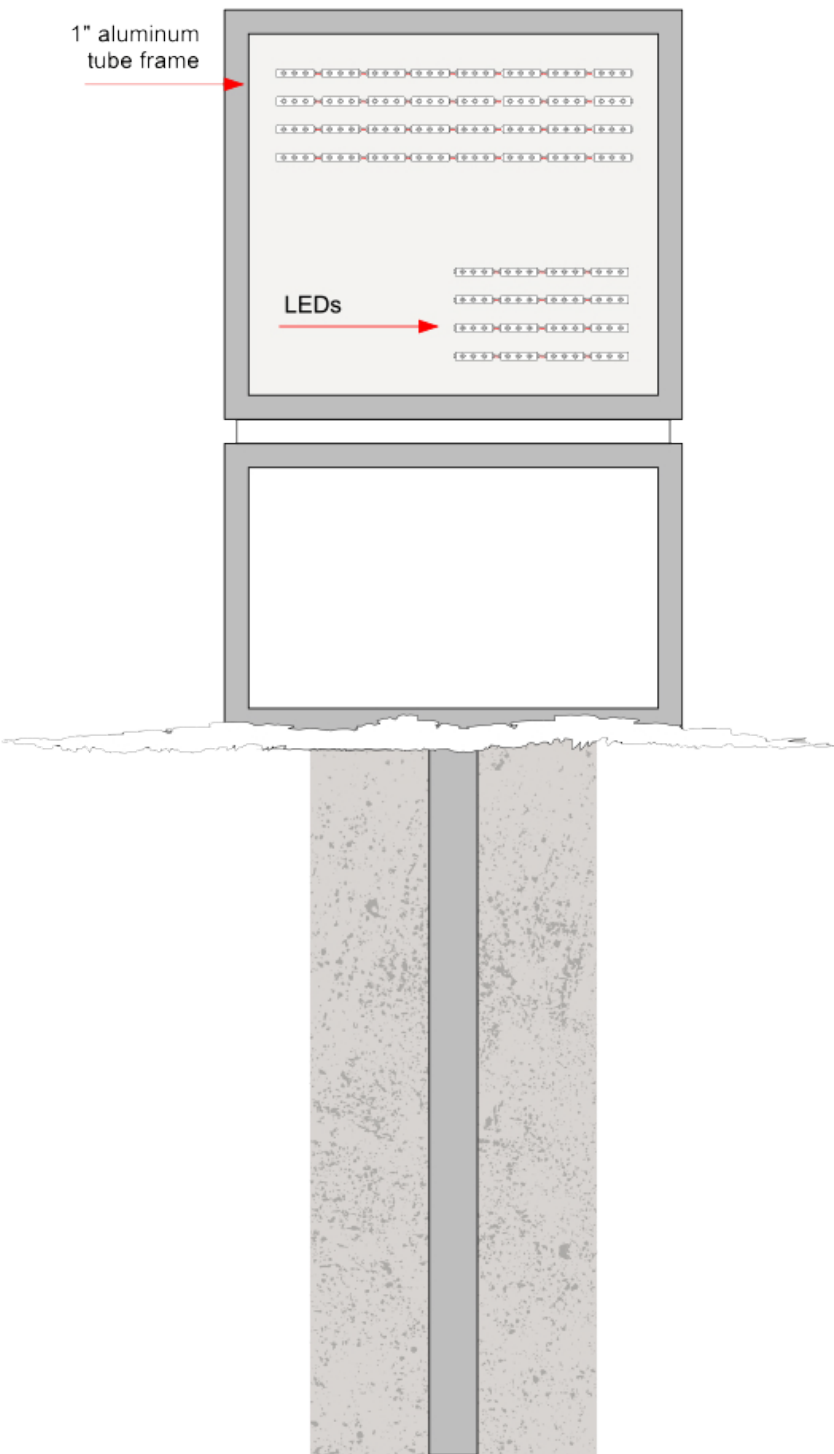
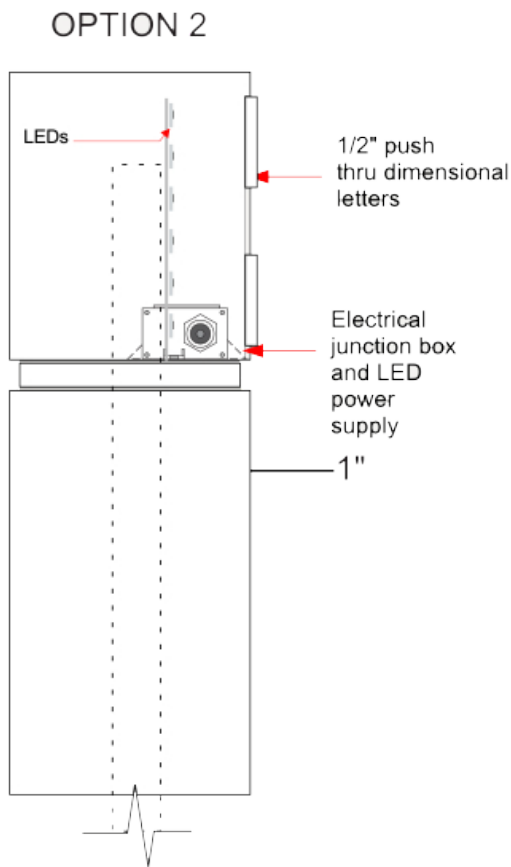
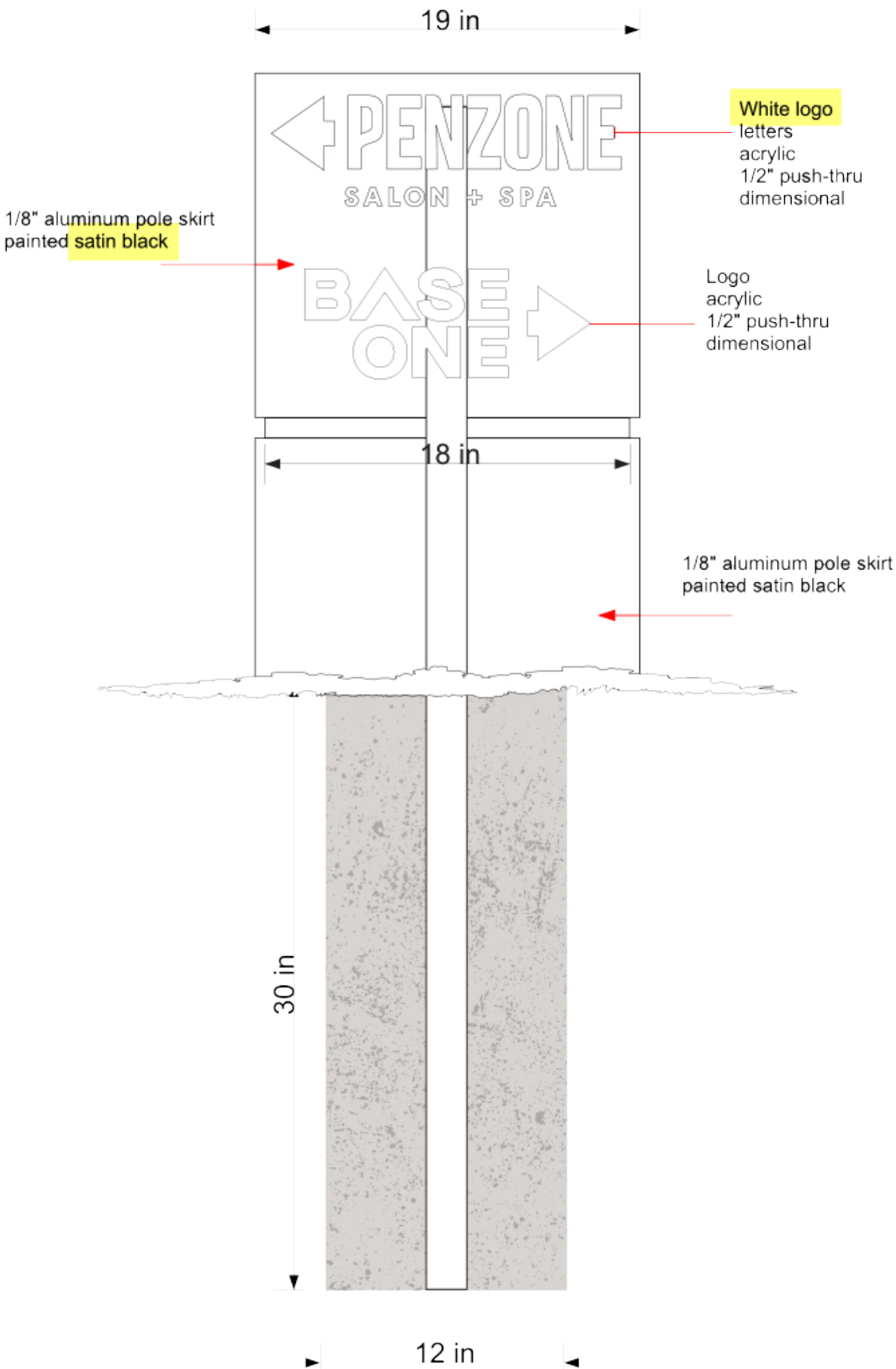
Directional entry sign - internally illuminated single-side 1/2" push-thru dimensional letters, aluminum cabinet with pole skirt - 1/8" aluminum black painted faces, white letters and black base

Option 2



TOTAL SQ FT: 3.95

**DESCRIPTION:**  
Directional entry sign structure - internally illuminated, push-thru dimensional letters, aluminum cabinet with pole skirt - 1/8" aluminum faces and base







## INDEX OF DRAWINGS

TITLE SHEET	C-001
GENERAL NOTES	C-002
EXISTING CONDITIONS	C-003
SITE PLAN	C-004



THIS DRAWING IS COPYRIGHTED  
AND IS THE SOLE PROPERTY OF  
MEYERS+ASSOCIATES ARCHITECTURE, LLC  
IT IS PRODUCED FOR USE BY THE PROPERTY  
OWNER REPRODUCTION OR OTHER USE OF  
THIS DRAWING OR THE INFORMATION CONTAINED  
HEREIN WITHOUT THE WRITTEN PERMISSION  
OF THE ARCHITECT IS STRICTLY PROHIBITED  
ALL RIGHTS RESERVED  
COPYRIGHT 2022

[illegible]

**CITY OF DUBLIN APPROVAL**

SIGNATURES BELOW SIGNIFY ONLY CONCURRENCE WITH THE GENERAL PURPOSES AND THE GENERAL LOCATION OF THE PROJECT AND DOES NOT CONSTITUTE ASSURANCE TO OPERATE AS INTENDED. ALL TECHNICAL DETAILS REMAIN THE RESPONSIBILITY OF THE PROFESSIONAL CIVIL ENGINEER PREPARING THE PLANS.

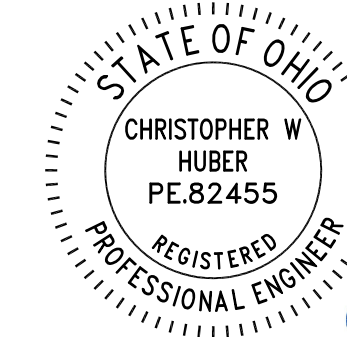
CITY ENGINEER, CITY OF DUBLIN, OHIO  
PAUL A. HAMMERSMITH, P.E.

DIRECTOR OF LAND USE AND LONG RANGE PLANNING      DATE  
CITY OF DUBLIN, OHIO

**PREPARED BY:**



781 Science Blvd, Suite 100  
Gahanna, Ohio 43230  
**ph 614.428.7750**  
**fax 614.428.7755**

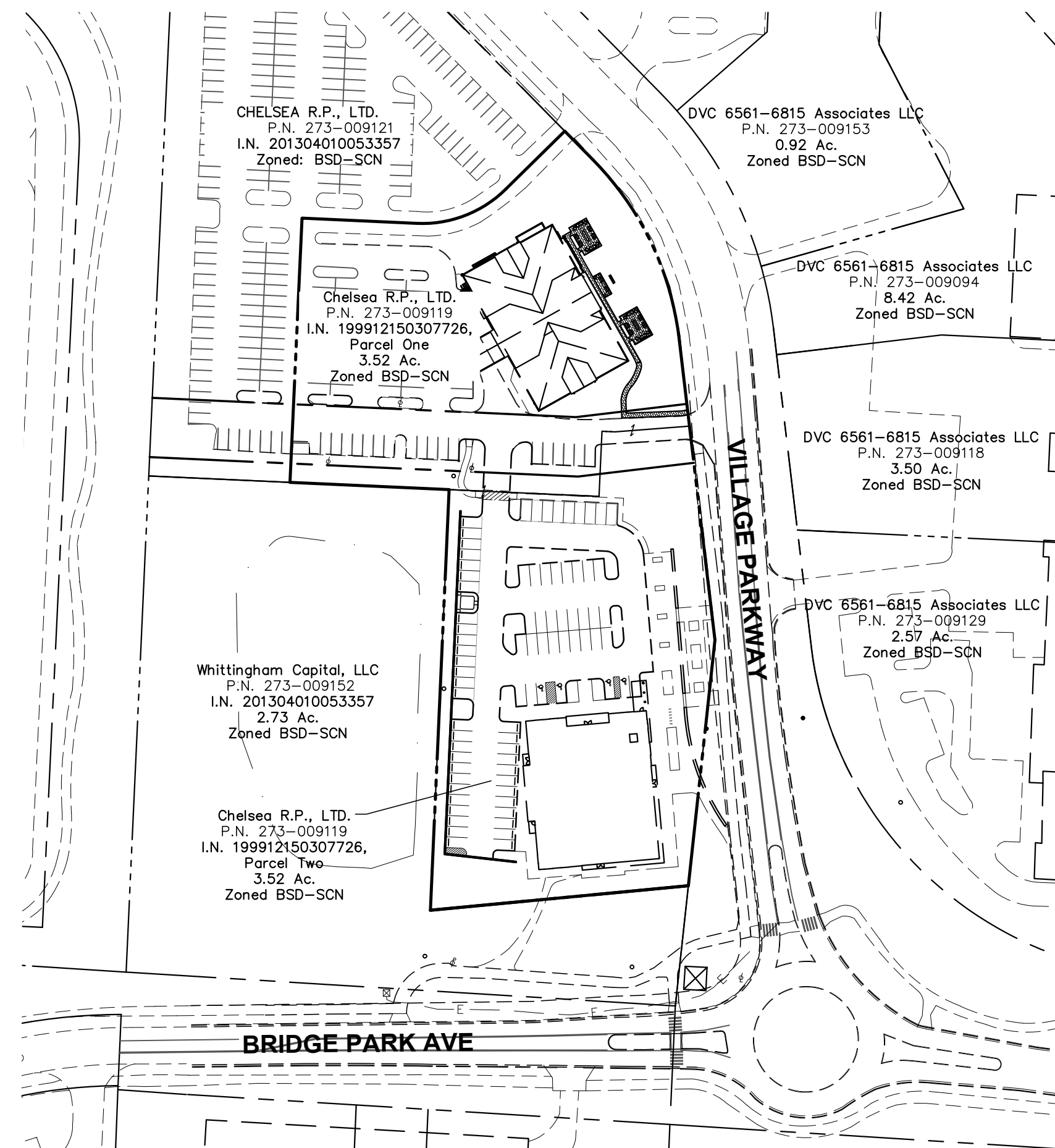


82455 5/9/2023

REGISTERED ENGINEER	NUMBER	DATE
---------------------	--------	------



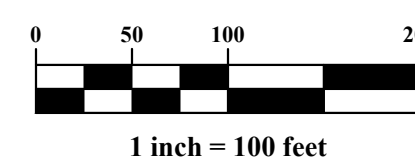
800-362-2764 or 8-1-1  
www.oups.org



## INDEX MAP

**SCALE: 1"=100'**

### GRAPHIC SCALE



**1 inch = 100 feet**

project team

## LANDSCAPE ARCHITECT

**EDGE**

**330 WEST SPRING STREET, SUITE 350  
COLUMBUS, OH 43215  
TEL: (614) 486 3343**

## MEP ENGINEER



**750 BROOKSEGE BLVD.  
WESTERVILLE, OH 43081  
TEL:(614) 839 4639**

**ARCHITECT OF RECORD:**

**meyers+associates**  
ARCHITECTURE

232 n third street, 300, columbus oh 43215  
t (614) 221 9433 f (614) 221 9441 [www.meyersarchitects.com](http://www.meyersarchitects.com)

[www.meyersarchitects.com](http://www.meyersarchitects.com)

## CIVIL ENGINEER



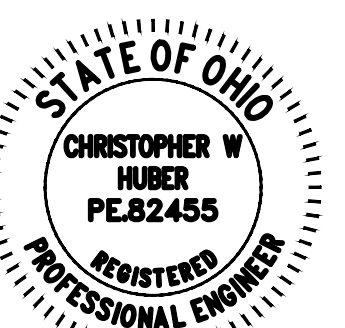
ADVANCED  
CIVIL DESIGN

781 Science Blvd, Suite 100  
Gahanna, Ohio 43230  
**ph 614.428.7750**  
**fax 614.428.7755**

**TITLE SHEET**

# Base One Exterior

5671 Village Parkway, Dublin, Ohio 43017



MEYERS+ASSOCIATES PROJECT NUMBER:

## 2021.33.1

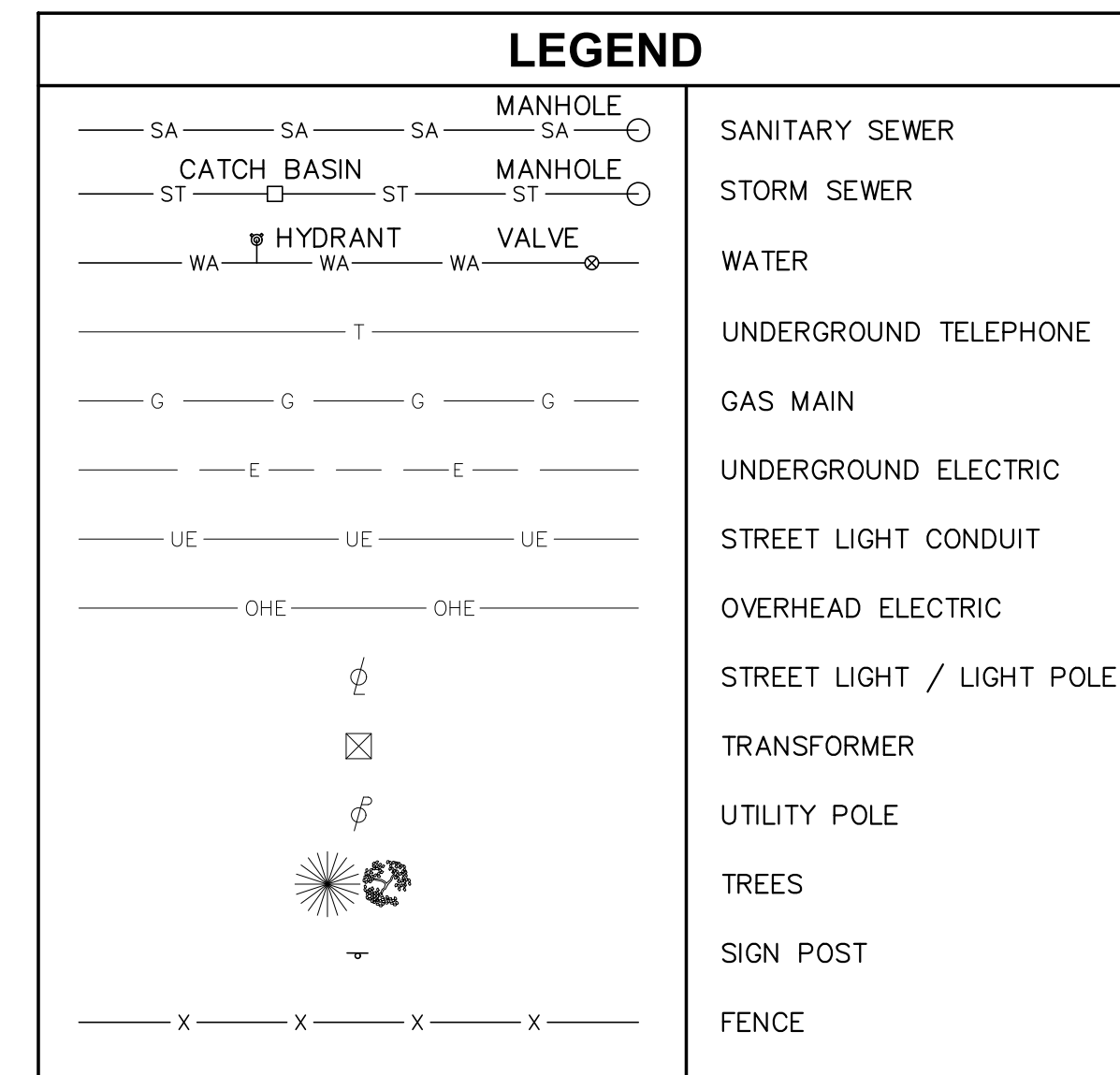
SHEET NUMBER

# C-001









TREES REMOVED			
SIZE (INCHES)	SPECIES	CONDITION	COMMENT
13	AUSTRIAN PINE	POOR	
13	AUSTRIAN PINE	POOR	
15	BLUE SPRUCE	FAIR-POOR	

THIS DRAWING IS COPYRIGHTED  
AND IS THE SOLE PROPERTY OF  
MEYERS+ASSOCIATES ARCHITECTURE, LLC  
IT IS PRODUCED FOR USE BY THE PROPERTY  
OWNER REPRODUCTION OR OTHER USE OF  
THIS DRAWING OR THE INFORMATION CONTAINED  
HEREIN WITHOUT THE WRITTEN PERMISSION  
OF THE ARCHITECT IS STRICTLY PROHIBITED  
ALL RIGHTS RESERVED  
COPYRIGHT 2022

[illegible]

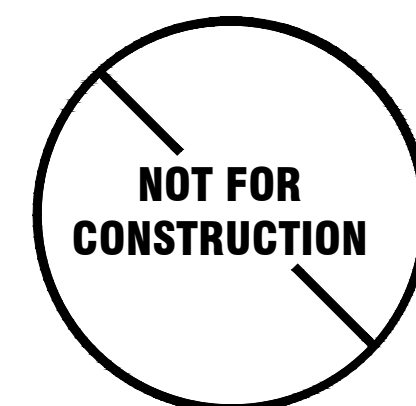
## EXISTING CONDITIONS

PROJECT TITLE

PROJECT TITLE

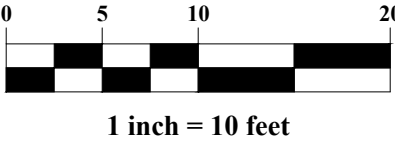
**Base One Exterior**

6671 Village Parkway, Dublin, Ohio 43017

MEYERS+ASSOCIATES PROJECT NUMBER  
**2021 22 1**

SHEET NUMBER

**C-003**

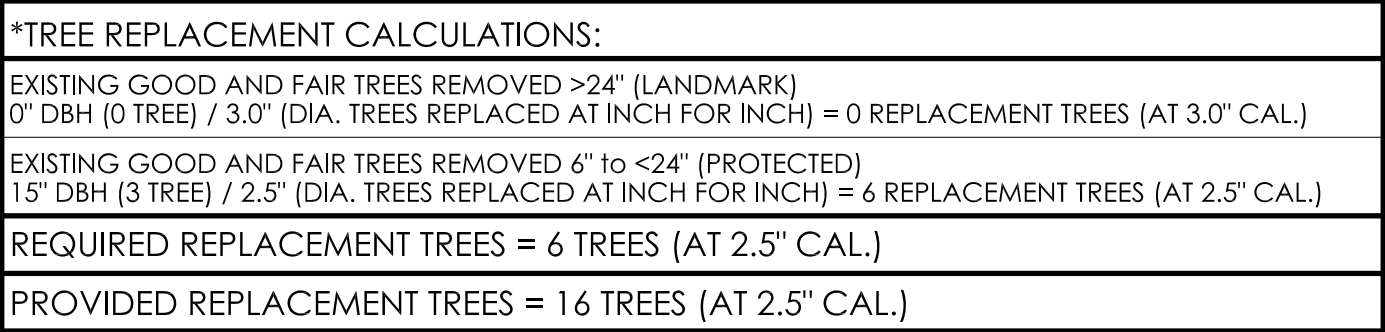


# C-004



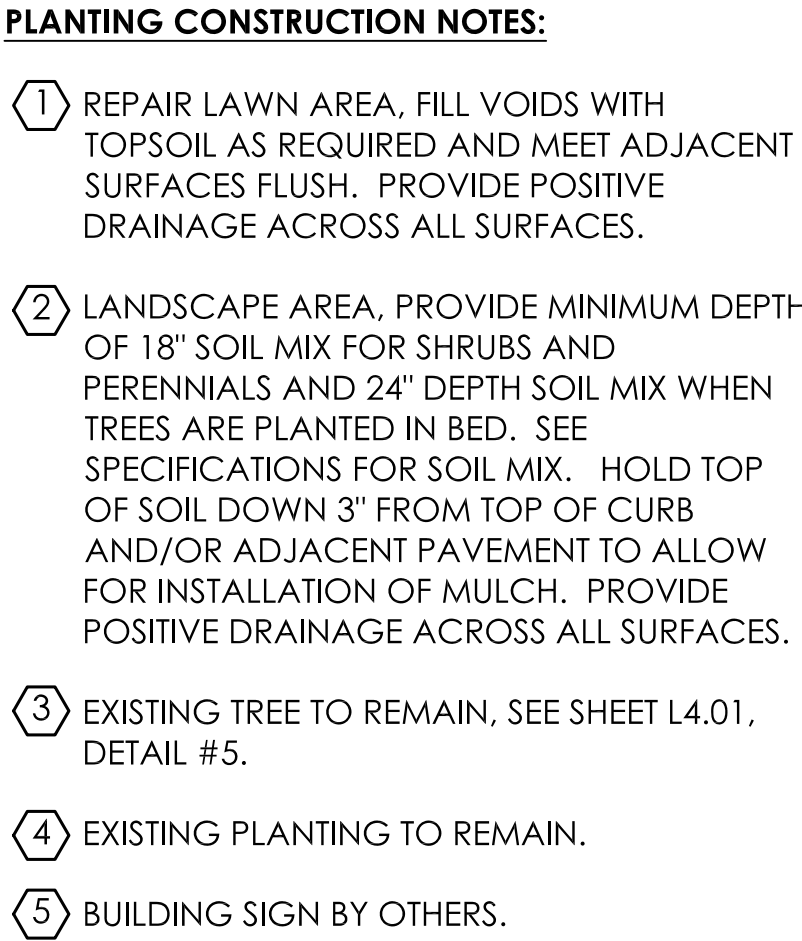






PERENNIALS	BOTANICAL / COMMON NAME	SIZE	CONTAINER	SPACING	QTY
	CAREX PENSYLVANICA / PENNSYLVANIA SEDGE	FLAT	PLUG	12" o.c.	1,569

Scale: 1" = 10'-0"



### **GENERAL NOTES:**

1. EXAMINE FINISH SURFACE, GRADES, TOPSOIL QUALITY AND DEPTH. DO NOT START ANY WORK UNTIL UNSATISFACTORY CONDITIONS HAVE BEEN CORRECTED. VERIFY LIMITS OF WORK BEFORE STARTING.
2. CONTRACTOR IS RESPONSIBLE FOR COST OF REPAIRS TO EXISTING CONDITIONS WHEN DAMAGED BY CONTRACTOR. REPAIR DAMAGES TO THE SATISFACTION OF THE OWNER.
3. ALL PLANT MASSES TO BE CONTAINED WITHIN 3" DEEP HARDWOOD BARK MULCH BED.
4. CONTRACTOR SHALL MAINTAIN POSITIVE DRAINAGE IN ALL LAWN AREAS.
5. FINE GRADE LAWN AREAS TO PROVIDE A SMOOTH AND CONTINUAL GRADE FREE OF IRREGULARITIES OR DEPRESSIONS.
6. CONTRACTOR SHALL SEED OR SOD ALL AREAS DISTURBED DURING CONSTRUCTION. SEE PLAN.
7. ALL PLANTS SHALL MEET OR EXCEED STANDARDS SET IN THE U.S.A. STANDARD FOR NURSERY STOCK.
8. ALL PLANTING OPERATIONS SHALL ADHERE TO THE AMERICAN ASSOCIATION OF NURSERYMEN STANDARDS.

Scale: 1" = 10'-0"

[illegible]