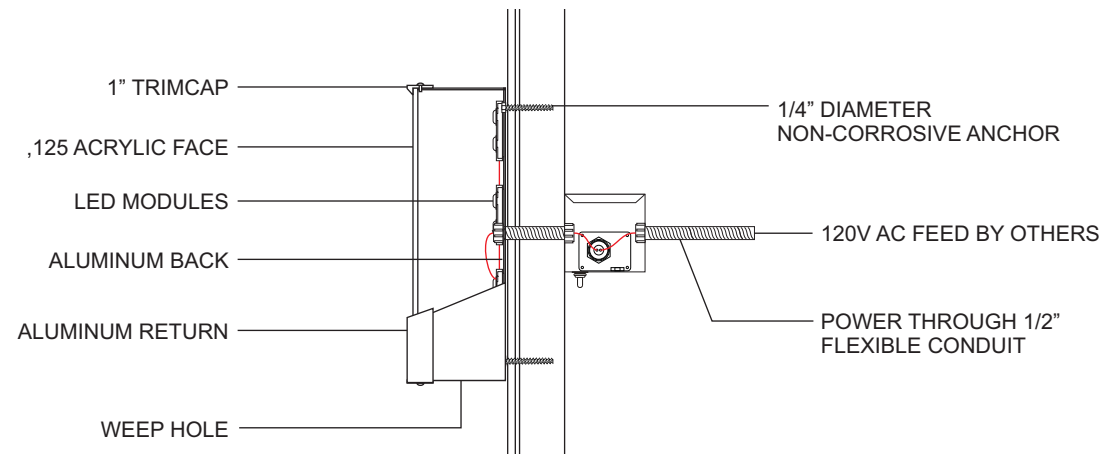


SCALE: 1/2" = 1' - 11.23 SQ FT



NOT TO SCALE - SECTION THRU DETAIL

Face-Lit Illuminated Channel Letters

(2) SETS REQUIRED  
INDIVIDUAL LETTERS ARE FORMED ALUMINUM - BACKS WITH 3" DEEP RETURNS PRIMED AND PAINTED  
FACES ARE .125 7328 TRANSLUCENT WHITE ACRYLIC WITH 1" TRIMCAP  
ILLUMINATED WITH INTERNAL HIGH OUTPUT WHITE LED MODULES WIRED TO REMOTE POWER SUPPLY CONVERTERS - UL LISTED #E153594 -  
HOUSED IN METAL BOX WITH EXTERNAL DISCONNECT SWITCH PLACED IN ACCESSIBLE AREA BEHIND WALL CONNECTED TO 120V AC ELECTRICAL FEED RUN TO LOCATION BY OTHERS  
(1) SET OF LETTERS ARE MOUNTED FLUSH TO CANOPY FACE ABOVE ENTRANCE USING 1/4" DIAMETER X 2"+/- LONG NON-CORROSIVE SCREWS  
(1) SET OF LETTERS MOUNTED FLUSH ON BRICK FASCIA USING 1/4" DIAMETER X 2"+/- LONG NON-CORROSIVE TAPCON MASONRY SCREWS

COLORS


LETTERS - MP 41313SP DARK BRONZE (INSIDE PAINTED WHITE)  
FACES - 7328 WHITE TRANSLUCENT ACRYLIC  
TRIMCAP - DARK BRONZE

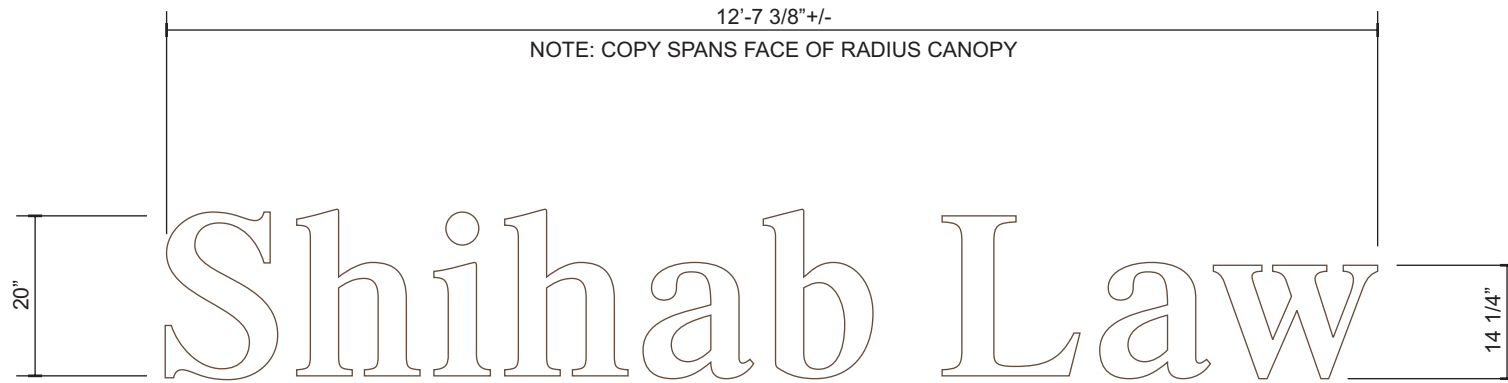
CONSTRUCTION AND INSTALLATION OF SIGN ELEMENTS TO COMPLY WITH NEC ARTICLE 600 - VERIFY ALL MEASUREMENTS PRIOR TO PRODUCTION



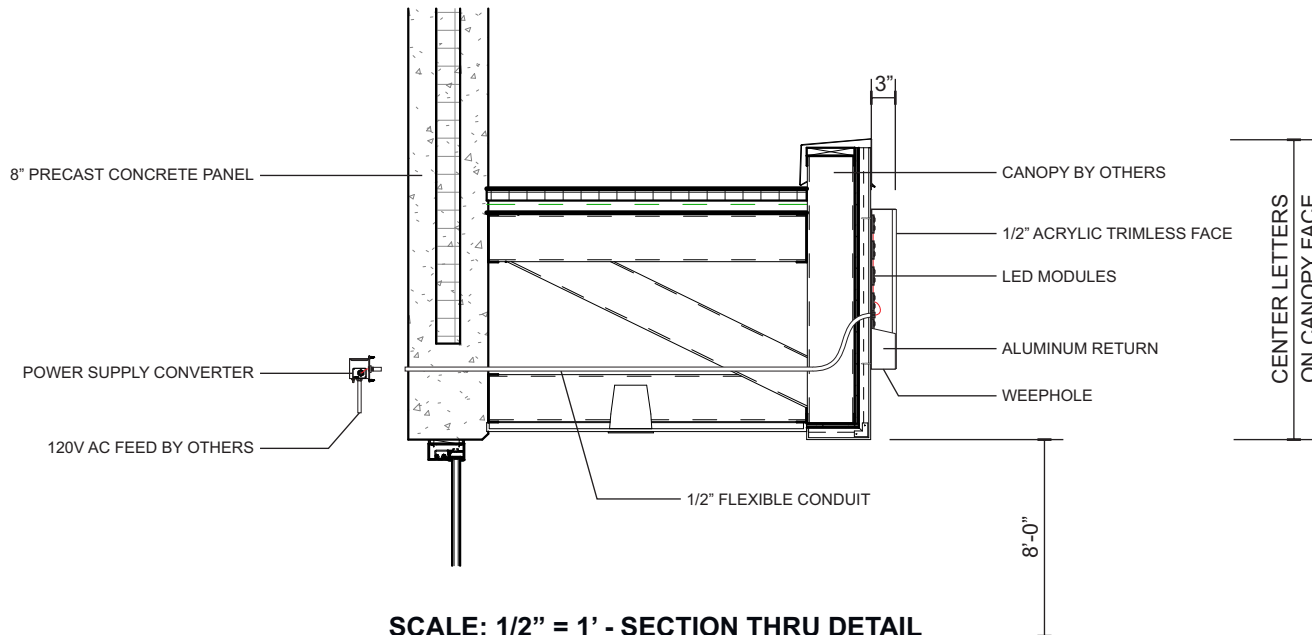
NOT TO SCALE - RENDERINGS SHOWING PROPOSED PLACEMENTS

CONSTRUCTION AND INSTALLATION OF SIGN ELEMENTS TO COMPLY WITH NEC ARTICLE 600 - VERIFY ALL MEASUREMENTS PRIOR TO PRODUCTION

© COPYRIGHT 2023    SIGNCOM, INC. • 527 WEST RICH STREET • COLUMBUS, OHIO 43215 • TEL: 614-228-9999 • FAX: 614-228-4326 • info@signcominc.com									
 Design • Fabrication • Erection • Service	CLIENT APPROVAL _____		DATE _____	<input type="checkbox"/> PRODUCTION ART REQUIRED <i>Colors on Printed Documents May Vary</i>	PROJECT NAME <u>DUBLIN FITNESS CLUB</u>	REVISION _____	SALES <u>BMS</u>	DATE <u>2-23-23</u>	
	_____		_____		LOCATION _____	_____	DESIGN <u>DAW</u>	SCALE <u>Noted</u>	
	_____		_____		CITY <u>DUBLIN</u> STATE <u>OHIO</u>	_____	SIZE <u>14</u>	PROJECT# <u>23197</u>	



SCALE: 1/2" = 1' - 21.02 SQ FT



SCALE: 1/2" = 1' - SECTION THRU DETAIL

## Canopy Mounted Face-Lit Channel Letters

(1) SET REQUIRED

RADIUS CANOPY ABOVE ENTRANCE BY OTHERS

INDIVIDUAL LETTERS ARE FORMED ALUMINUM - BACKS WITH 3" DEEP RETURNS PRIMED AND PAINTED

TRIMLESS FACES ARE 1/2" TRANSLUCENT 7328 WHITE ACRYLIC ILLUMINATED WITH INTERNAL HIGH OUTPUT WHITE LED MODULES

WIRED TO REMOTE POWER SUPPLY CONVERTERS - UL LISTED

#E153594 - HOUSED IN METAL BOX WITH EXTERNAL DISCONNECT SWITCH PLACED IN ACCESSIBLE AREA BEHIND WALL CONNECTED TO 120V AC ELECTRICAL FEED RUN TO LOCATION BY OTHERS - ALL CONDUIT CLAD WIRING TO RUN THROUGH CANOPY LETTERS MOUNT TO RADIUS CANOPY FACE USING NON-CORROSIVE 1/4" DIAMETER X 2"+/- LONG SCREWS

## COLORS

LETTERS - MP 41314SP OLD COPPER (INSIDE PAINTED WHITE)

FACES - 7328 WHITE TRANSLUCENT ACRYLIC

CONSTRUCTION AND INSTALLATION OF SIGN ELEMENTS TO COMPLY WITH NEC ARTICLE 600 - VERIFY ALL MEASUREMENTS PRIOR TO PRODUCTION

© COPYRIGHT 2023

SIGNCOM, INC. • 527 WEST RICH STREET • COLUMBUS, OHIO 43215 • TEL: 614-228-9999 • FAX: 614-228-4326 • info@signcominc.com



CLIENT APPROVAL \_\_\_\_\_ DATE \_\_\_\_\_

☐ PRODUCTION  
ART REQUIRED  
Colors on Printed Documents  
May Vary

PROJECT NAME SHIHAB & ASSOCIATES  
LOCATION \_\_\_\_\_  
CITY COLUMBUS STATE OHIO

REVISION 2-23-23

SALES BMS  
DESIGN DAW  
SIZE 14

DATE 1-26-23  
SCALE Noted  
PROJECT# 23145





NOT TO SCALE - RENDERING SHOWING PROPOSED LETTERS ON CANOPY

CONSTRUCTION AND INSTALLATION OF SIGN ELEMENTS TO COMPLY WITH NEC ARTICLE 600 - VERIFY ALL MEASUREMENTS PRIOR TO PRODUCTION

© COPYRIGHT 2023

SIGNCOM, INC. • 527 WEST RICH STREET • COLUMBUS, OHIO 43215 • TEL: 614-228-9999 • FAX: 614-228-4326 • info@signcominc.com



CLIENT APPROVAL	DATE
_____	_____
_____	_____

☐ PRODUCTION  
ART REQUIRED  
Colors on Printed Documents  
May Vary

PROJECT NAME	<u>SHIHAB &amp; ASSOCIATES</u>
LOCATION	_____
CITY	<u>COLUMBUS</u>
STATE	<u>OHIO</u>

REVISION	<u>2-23-23</u>
_____	_____
_____	_____

SALES	<u>BMS</u>
DESIGN	<u>DAW</u>
SIZE	<u>14</u>

DATE	<u>1-26-23</u>
SCALE	<u>Noted</u>
PROJECT#	<u>23145</u>