

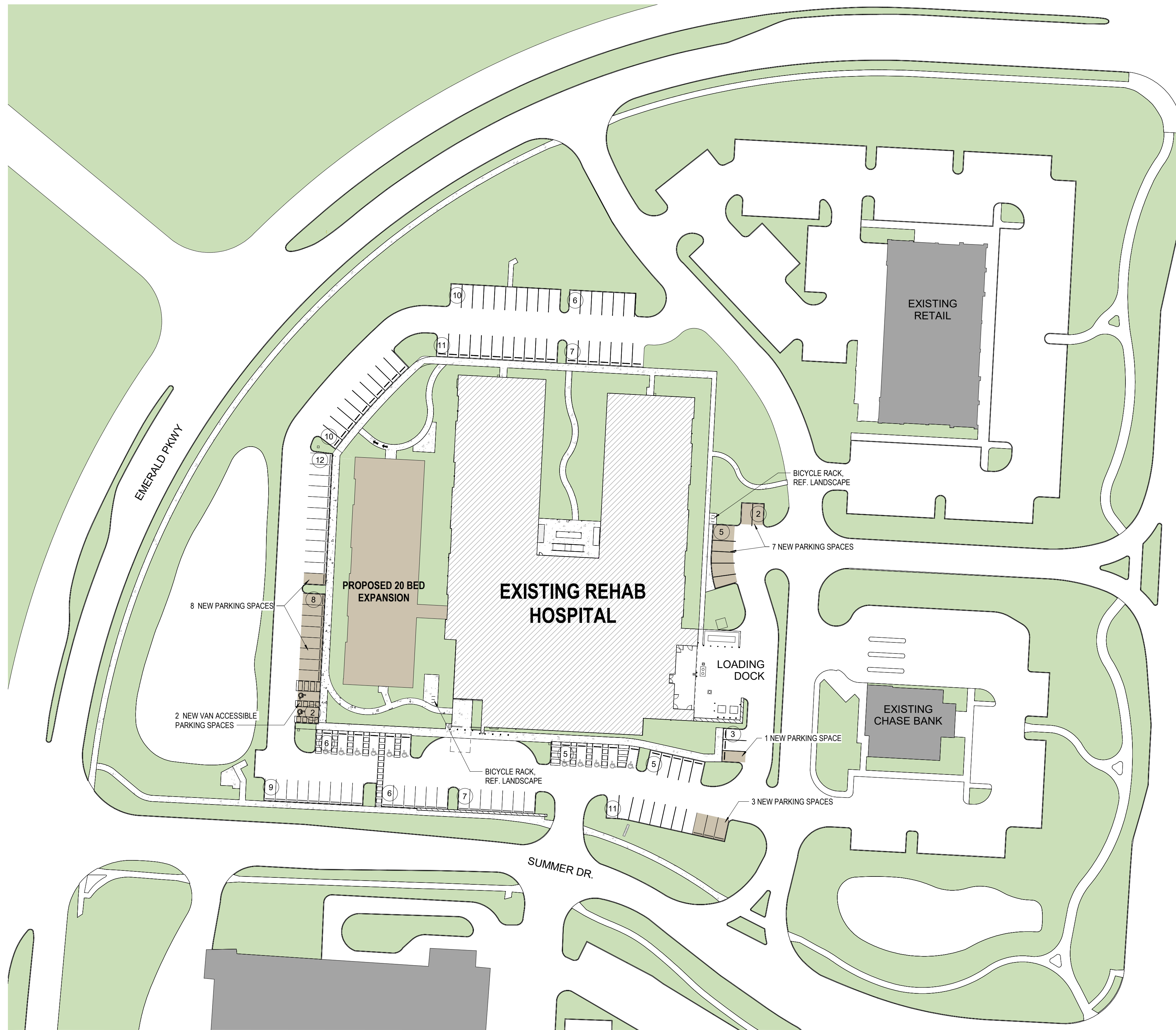


## SHEET INDEX

A0.00	COVER SHEET / AERIAL VIEW
A1.01	SITE PLAN
A1.02	LEVEL 01 FLOOR PLAN
A1.03	ROOF PLAN
A3.01	ELEVATIONS
A3.02	RENDERED ELEVATIONS
A4.01	PERSPECTIVES
A4.02	PERSPECTIVES
A5.01	EXTERIOR MATERIALS
A6.01	PHOTOMETRICS
1	TITLE SHEET
2	GENERAL NOTES
3	EXISTING CONDITIONS & DEMOLITION PLAN
4-5	STORMWATER POLLUTION PREVENTION PLAN
6	SITE STAKING PLAN
7	UTILITY PLAN
8	GRADING PLAN
9	GRADING PLAN
10	MISCELLANEOUS DETAILS
L-1	LANDSCAPE REQUIREMENTS PLAN
L-1.1	OVERALL LANDSCAPE PLAN
L-2	LANDSCAPE ENLARGEMENT PLAN
L-3	PEDESTRIAN AREA LAYOUT PLAN
L-4	TREE RELOCATION PLAN

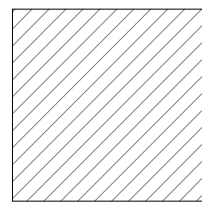
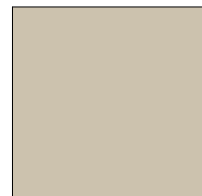
A0.00





**SITE DATA**

EXISTING PARKING SPACES	92
EXISTING ADA SPACES	11
PROPOSED PARKING SPACES	20
PROPOSED ADA SPACES	2
EXISTING TOTAL SPACES	103
<b>TOTAL PROPOSED SPACES</b>	<b>22</b>
<b>NEW PARKING COUNT</b>	<b>125</b>

-  EXISTING REHAB HOSPITAL
-  PROPOSED EXPANSION



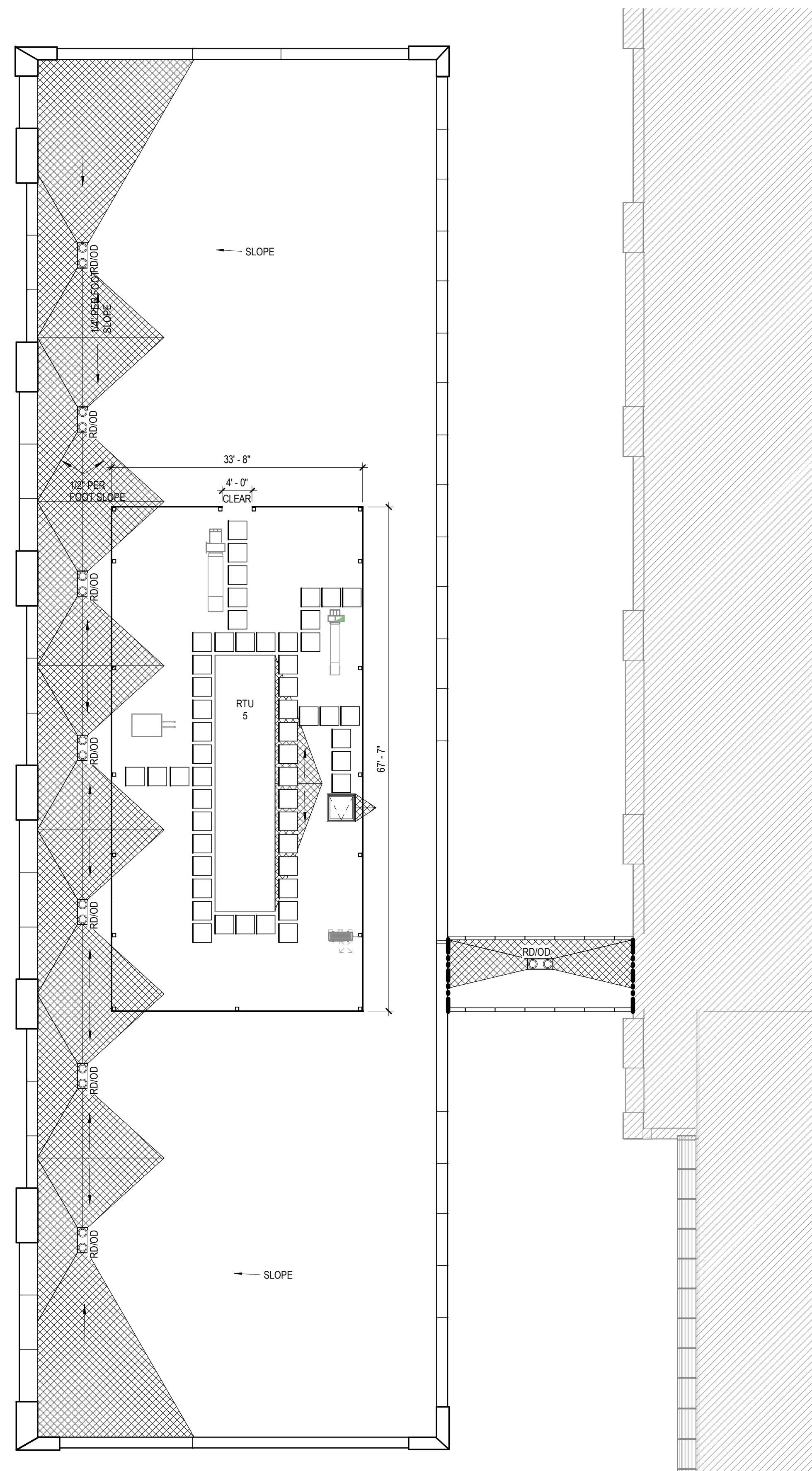


OVERALL FLOOR PLAN

3/32" = 1'-0"

A1.02



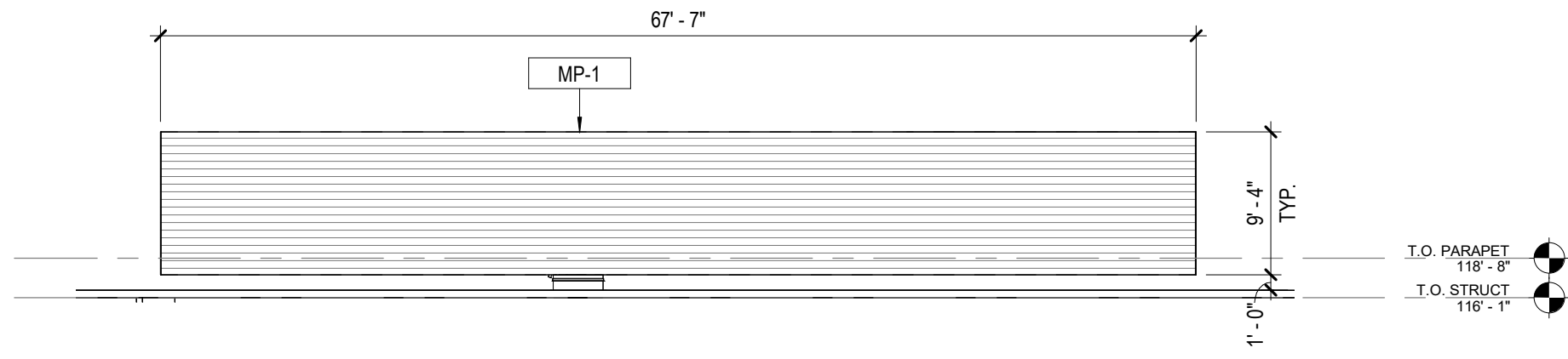


OVERALL ROOF PLAN

3/32" = 1'-0"

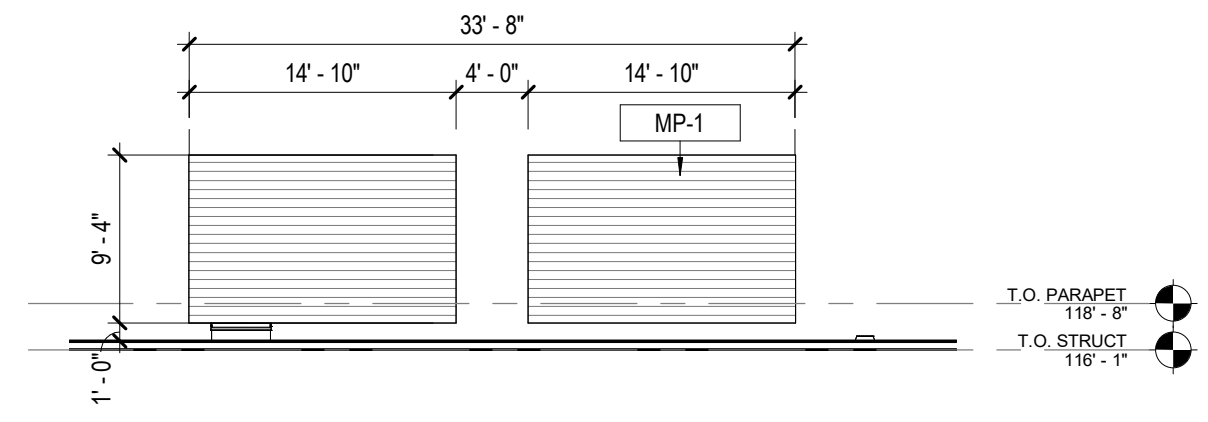
A1.03





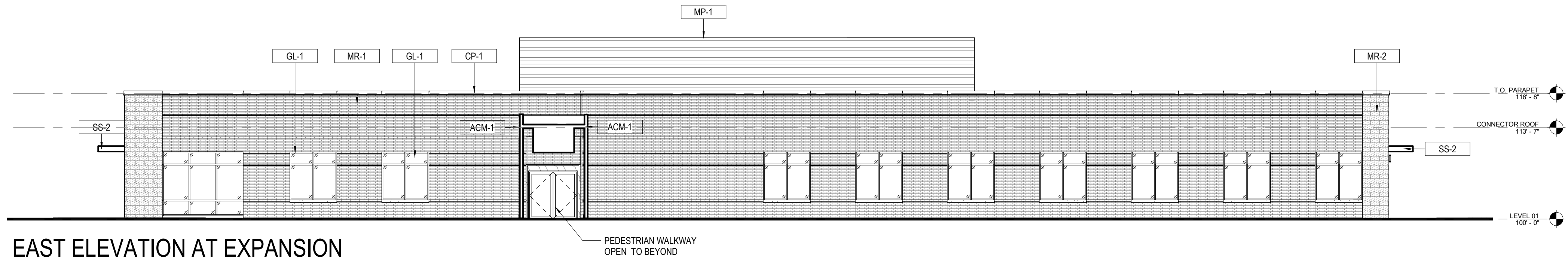
**EAST ELEVATION AT ROOFTOP SCREEN WALL**

3/32" = 1'-0"



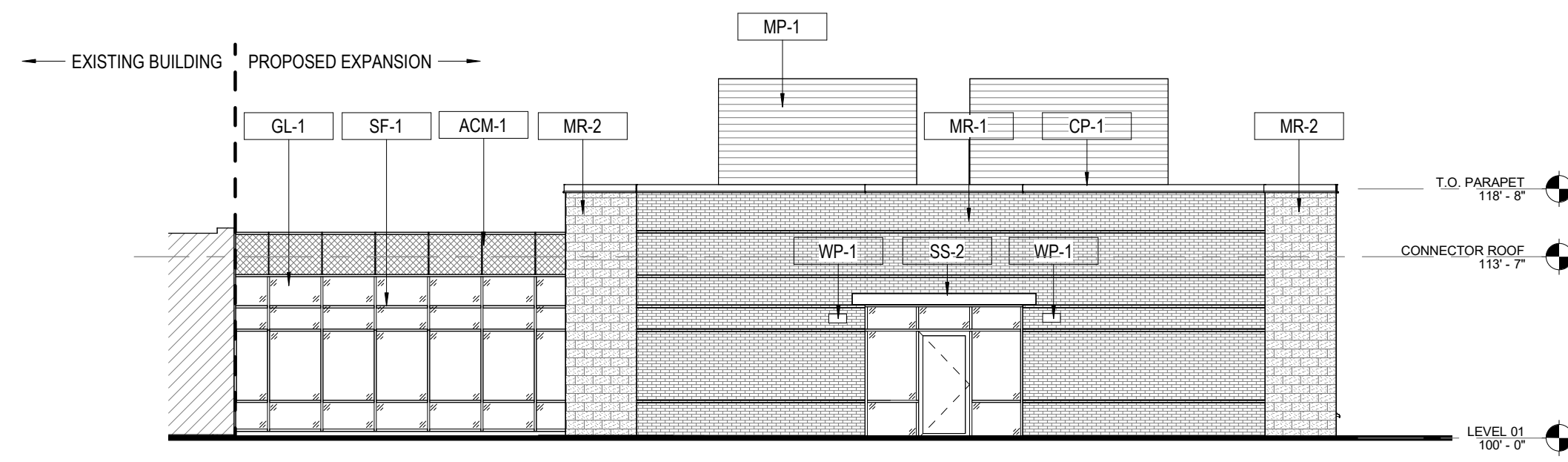
**NORTH ELEVATION AT ROOFTOP SCREENWALL**

3/32" = 1'-0"



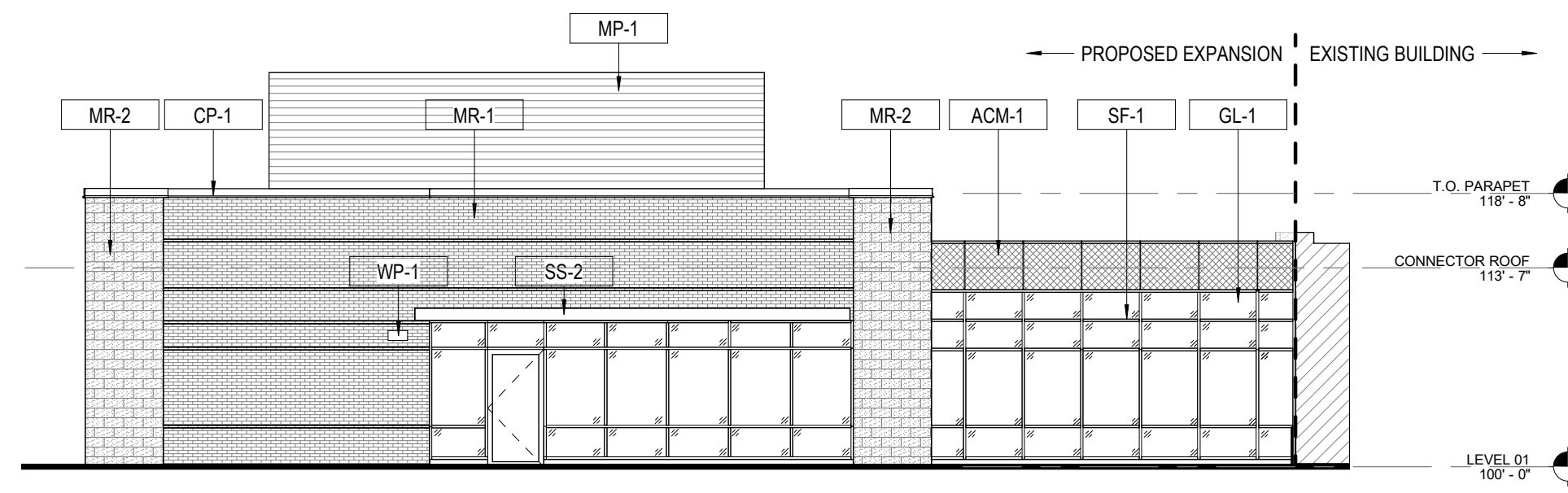
**EAST ELEVATION AT EXPANSION**

3/32" = 1'-0"



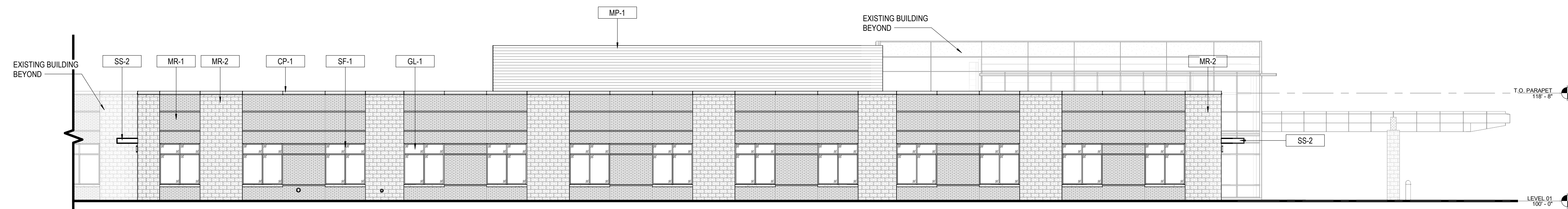
**NORTH ELEVATION AT EXPANSION**

3/32" = 1'-0"



**SOUTH ELEVATION AT EXPANSION**

3/32" = 1'-0"



**WEST ELEVATION AT EXPANSION**

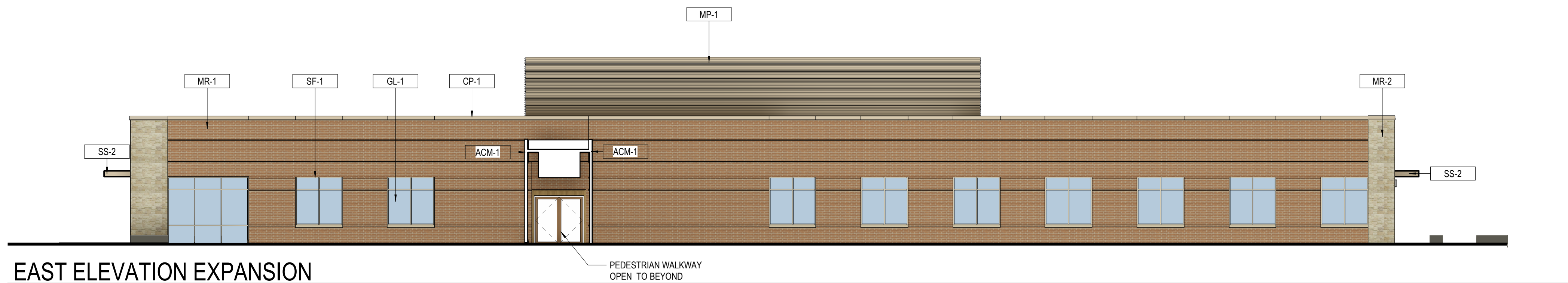
3/32" = 1'-0"

**EXTERIOR FINISH SCHEDULE**

\*VERIFY ALL FINISHES WITH FINISH SCHEDULE

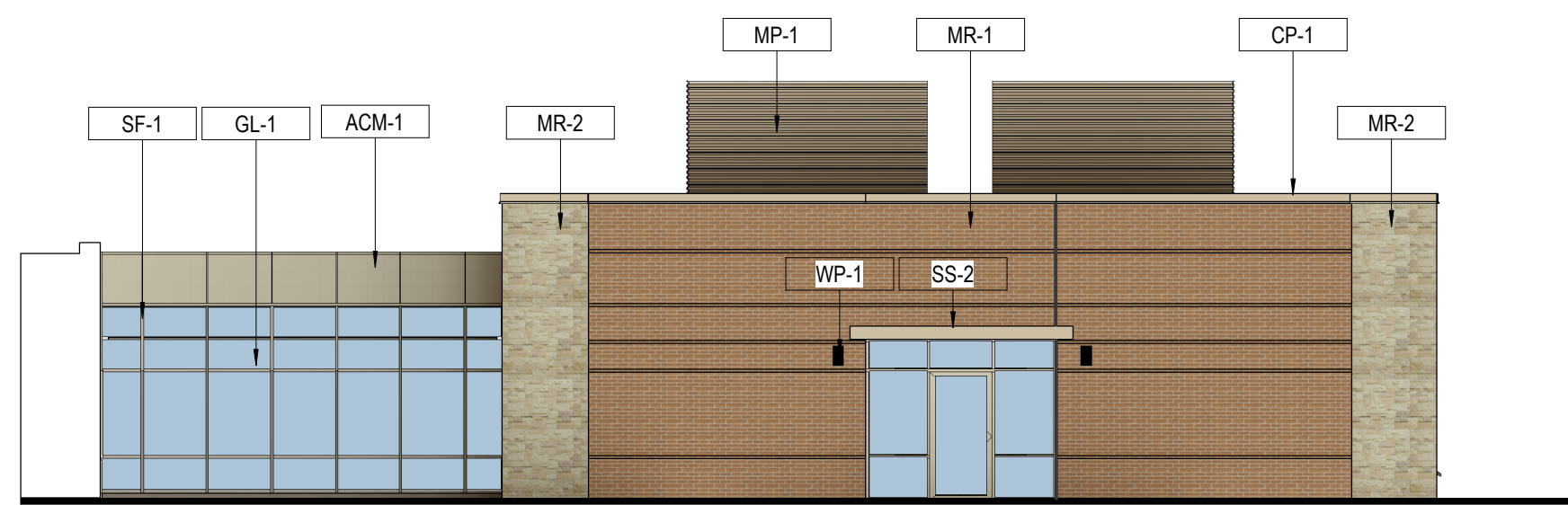
MR-1	DESC.: BRICK MANUF.: GLEN GERY STYLE.: MODULAR FINISH.: OLDE DETROIT
MR-2	DESC.: HADRIAN STONE VENEER MANUF.: TEXASTONE QUARRIES STYLE.: HADRIAN LIMESTONE FINISH.: HONED FINISH
CS-1	DESC.: CAST STONE COPING MANUF.: READINGROCK STYLE.: ROCKCAST FINISH.: SMOOTH; RIESLING
MP-1	DESC.: EXTERIOR SCREEN WALL MANUF.: BERRIDGE STYLE.: M PANEL FINISH.: FINISH TO MATCH SF-1, COLONIAL WHITE
ACM-1	DESC.: ALUMINUM COMPOSITE MATERIAL MANUF.: ALUCOBOND STYLE.: 4MM RAINSCREEN FINISH.: FINISH TO MATCH SF-1, COLONIAL WHITE
CP-1	DESC.: COPING AT BRICK PARAPET MANUF.: FIRESTONE, METAL PRODUCTS STYLE.: UNA CLAD FINISH.: FINISH TO MATCH SF-1, COLONIAL WHITE
SF-1	DESC.: STOREFRONT MANUF.: KAWNEER NORTH AMERICA STYLE.: TRIFAB 451T; 2" SIGHTLINE, 4 1/2" DEEP FINISH.: COLONIAL WHITE, ARCHITECTURAL CLASS 1
GL-1	DESC.: CLEAR GLAZING MANUF.: OLD CASTLE BUILDING ENVELOPE STYLE.: LOW-E FINISH.: 1/4" SN 68 CRYSTAL GRAY
SS-2	DESC.: SOLID CANOPY MANUF.: AVADEK STYLE.: THIN PROFILE FINISH.: FINISH TO MATCH SF-1
WP-1	DESC.: ARCHITECTURAL WALL SCONCE MANUF.: LITHONIA STYLE.: WST LED FINISH.: DARK BRONZE





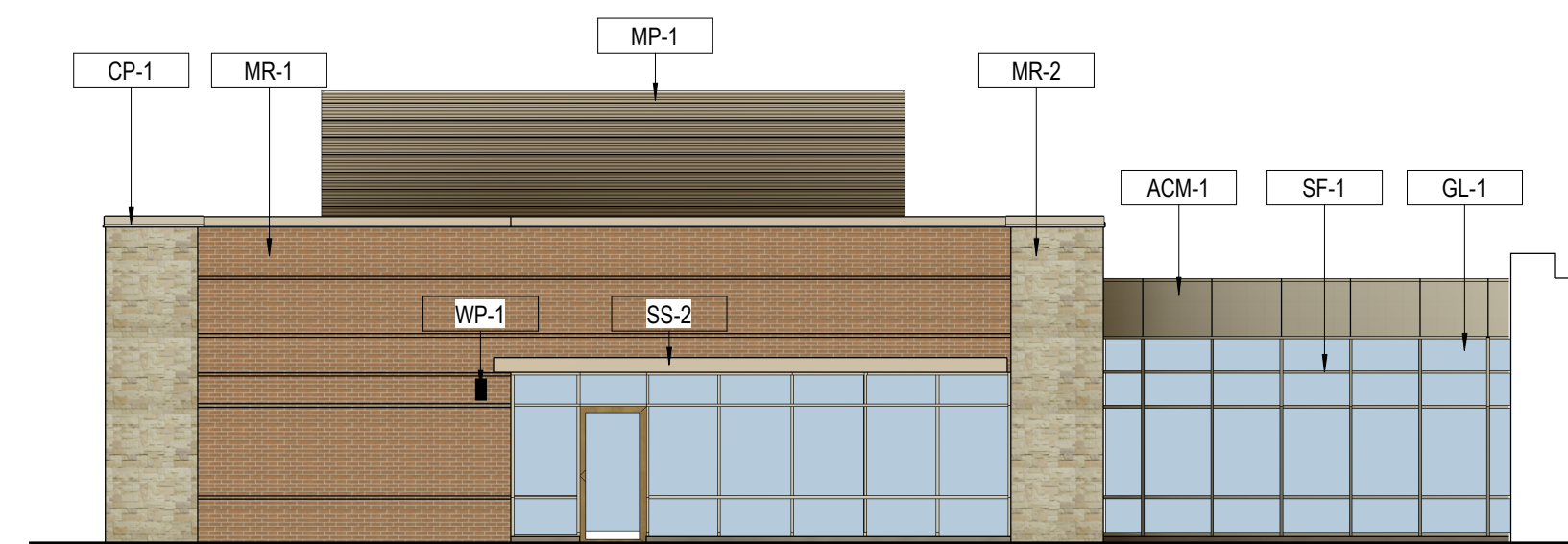
**EAST ELEVATION EXPANSION**

3/32" = 1'-0"



**NORTH ELEVATION EXPANSION**

3/32" = 1'-0"



**SOUTH ELEVATION EXPANSION**

3/32" = 1'-0"



**WEST ELEVATION EXPANSION**

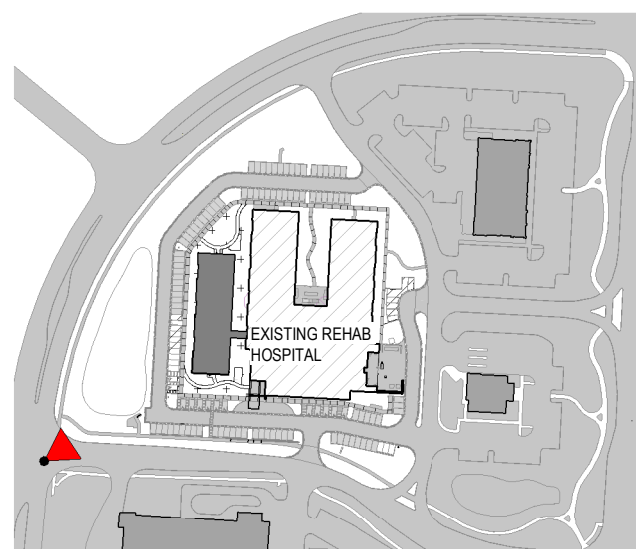
3/32" = 1'-0"

**EXTERIOR FINISH SCHEDULE**

\*VERIFY ALL FINISHES WITH FINISH SCHEDULE

MR-1	DESC.: BRICK MANUF.: GLEN GERY STYLE.: MODULAR FINISH: OLDE DETROIT
MR-2	DESC.: HADRIAN STONE VENEER MANUF.: TEXASTONE QUARRIES STYLE.: HADRIAN LIMESTONE FINISH: HONED FINISH
CS-1	DESC.: CAST STONE COPING MANUF.: READINGROCK STYLE.: ROCKCAST FINISH: SMOOTH, RIESLING
MP-1	DESC.: EXTERIOR SCREEN WALL MANUF.: BERRIDGE STYLE.: M PANEL FINISH: FINISH TO MATCH SF-1, COLONIAL WHITE
ACM-1	DESC.: ALUMINUM COMPOSITE MATERIAL MANUF.: ALUCOBOND STYLE.: 4MM RAINSCREEN FINISH: FINISH TO MATCH SF-1, COLONIAL WHITE
CP-1	DESC.: COPING AT BRICK PARAPET MANUF.: FIRESTONE, METAL PRODUCTS STYLE.: UNA CLAD FINISH: FINISH TO MATCH SF-1, COLONIAL WHITE
SF-1	DESC.: STOREFRONT MANUF.: KAWNEER NORTH AMERICA STYLE.: TRIFAB 451T, 2" SIGHTLINE, 4 1/2" DEEP FINISH: COLONIAL WHITE, ARCHITECTURAL CLASS 1
GL-1	DESC.: CLEAR GLAZING MANUF.: OLD CASTLE BUILDING ENVELOPE STYLE.: LOW-E FINISH: 1/4" SN 68 CRYSTAL GRAY
SS-2	DESC.: SOLID CANOPY MANUF.: AVADEK STYLE.: THIN PROFILE FINISH: FINISH TO MATCH SF-1
WP-1	DESC.: ARCHITECTURAL WALL SCONCE MANUF.: LITHONIA STYLE.: WST LED FINISH: DARK BRONZE





View Reference

View Driving North on Emerald Parkway toward Summer Drive

A4.01