

GENERAL PLANTING NOTES:

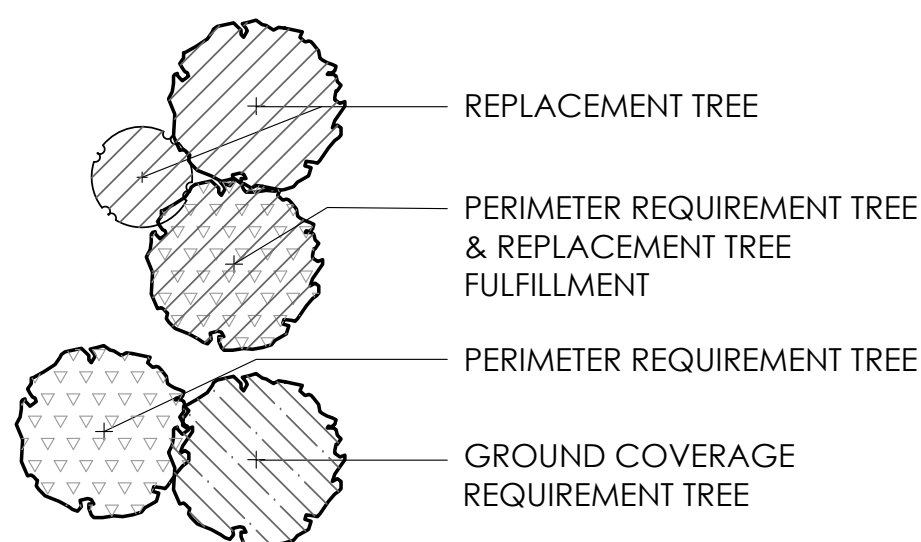
- ALL PLANTS SHALL MEET OR EXCEED STANDARDS SET IN THE USA STANDARD FOR NURSERY STOCK.
- ALL PLANTING OPERATIONS SHALL ADHERE TO THE AMERICAN ASSOCIATION OF NURSERYMEN STANDARDS.
- PLANT LOCATIONS AND BEDS SHALL BE LOCATED BY CONTRACTOR AND APPROVED BY LANDSCAPE ARCHITECT PRIOR TO INSTALLATION.
- PLANTING BEDS SHALL HAVE A MINIMUM 3" DEEP SHREDDED HARDWOOD BARK MULCH. MULCH HEDGES IN A CONTINUOUS BED.
- ALL PLANTING BEDS TO BE TILLED TO A MINIMUM DEPTH OF 12".
- ALL PLANTING BEDS TO BE FERTILIZED WITH 10-10-10 OR APPROVED EQUAL.
- SODDING / SEEDING BY LANDSCAPE CONTRACTOR.
- THE LOCATION OF THE EXISTING UNDERGROUND UTILITIES ARE SHOWN IN AN APPROXIMATE WAY ONLY AND HAVE NOT BEEN INDEPENDENTLY VERIFIED BY THE OWNER OR ITS REPRESENTATIVE. THE CONTRACTOR SHALL DETERMINE THE EXACT LOCATION OF ALL EXISTING UTILITIES PRIOR TO COMMENCING WORK AND AGREES TO BE FULLY RESPONSIBLE FOR ANY AND ALL DAMAGES WHICH MIGHT BE OCCASIONED BY THE CONTRACTOR'S FAILURE TO EXACTLY LOCATE AND PRESERVE ANY AND ALL UNDERGROUND UTILITIES.
- ALL AREAS DISTURBED BY CONSTRUCTION ARE TO BE RESTORED, FINE GRADED AND SEEDED/ SODDED.
- ALL EXISTING PLANT MATERIAL SHOWN ON THIS PLAN IS TO BE PRESERVED UNLESS SPECIFICALLY NOTED OTHERWISE.

CONSTRUCTION NOTES:

- LAWN AREA. PROVIDE POSITIVE DRAINAGE ACROSS ALL SURFACES.
- LANDSCAPE AREA. PROVIDE POSITIVE DRAINAGE ACROSS ALL SURFACES. PROVIDE MIN. 3" DEPTH HARDWOOD BARK MULCH.

PLANT KEY TYPICALS

SEE PLANT LIST FOR SPECIFIC PLANT SPECIES



LANDSCAPE CALCULATIONS

LOT COVERAGE		
- VEHICULAR USE AREA = ± 58,054 S.F.		
- BUILDING AREA = ± 57,336 S.F.		

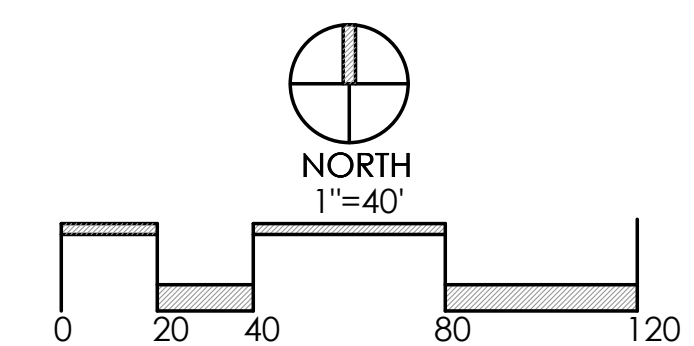
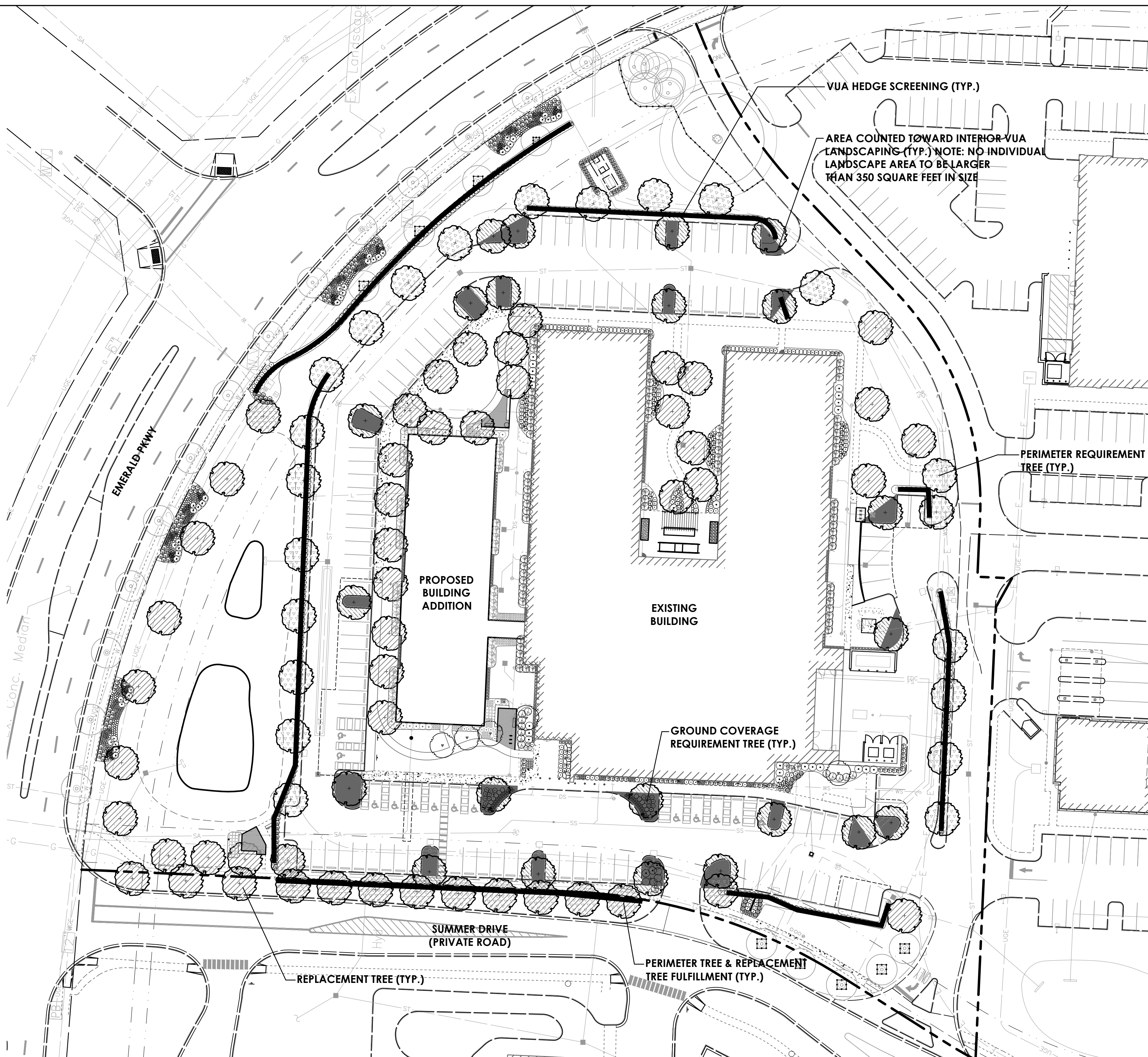
INTERIOR GREEN SPACE	REQUIRED	PROVIDED
	±58,054 S.F. X 5% = 2,903 S.F. REQUIRED	±4,207 S.F. PROVIDED = 7.2%

GROUND COVERAGE TREE REQUIREMENTS - 1 TREE PER 5,000 S.F. OF GROUND COVERAGE	REQUIRED	PROVIDED
	- ±115,390 S.F. OF PROPOSED TOTAL GROUND COVERAGE = ± 23 TREES REQUIRED	23 TREES @ MINIMUM 2" CAL. PROVIDED

LANDSCAPE AREA REQUIREMENTS	REQUIRED	PROVIDED
	- 57,336 S.F. OF PROPOSED BUILDING COVERAGE	- 57,336 X 2% = 1,147 S.F. OF LANDSCAPE AREAS PROVIDED

VEHICULAR USE AREA REQUIREMENTS - 3.5' HGT. MOUND OR HEDGE, AND 1 TREE PER 40 LINEAL FEET	REQUIRED	PROVIDED
	- WEST AND NORTH VUA AREA = ± 670 LF	- WEST AND NORTH VUA: HEDGE AND (17) TREES PROVIDED
	- EAST VUA AREA = ± 230 LF	- EAST VUA: HEDGE AND (6) TREES PROVIDED
	- SOUTH VUA AREA = ± 376 LF	- SOUTH VUA: HEDGE AND (10) TREES PROVIDED

TREE REPLACEMENT	REQUIRED	PROVIDED
	NONE REQUIRED DUE TO RELOCATING/REPLACING OF EXISTING TREES FROM PROPOSED LOCATION OF BUILDING ADDITION.	SEE SHEET L-4 FOR TREE RELOCATION/REPLACEMENT AND SHEET L-1.1 FOR OVERALL LANDSCAPE PLAN.



REVISIONS	

LANDSCAPE REQUIREMENTS PLAN (PHASE 1 & ADDITION)

OHIO HEALTH REHAB HOSPITAL EXPANSION
3805 EMERALD PARKWAY, DUBLIN, OHIO 43016
PREPARED FOR
SELECT MEDICAL

Faris Planning & Design
LAND PLANNING • LANDSCAPE ARCHITECTURE
4874 Cemetery Road
P (614) 487-1964
www.farisplanninganddesign.com
Hilliard, OH 43026

DATE	08/24/23
PROJECT	18144
SHEET	

L-1

CONSTRUCTION NOTES:

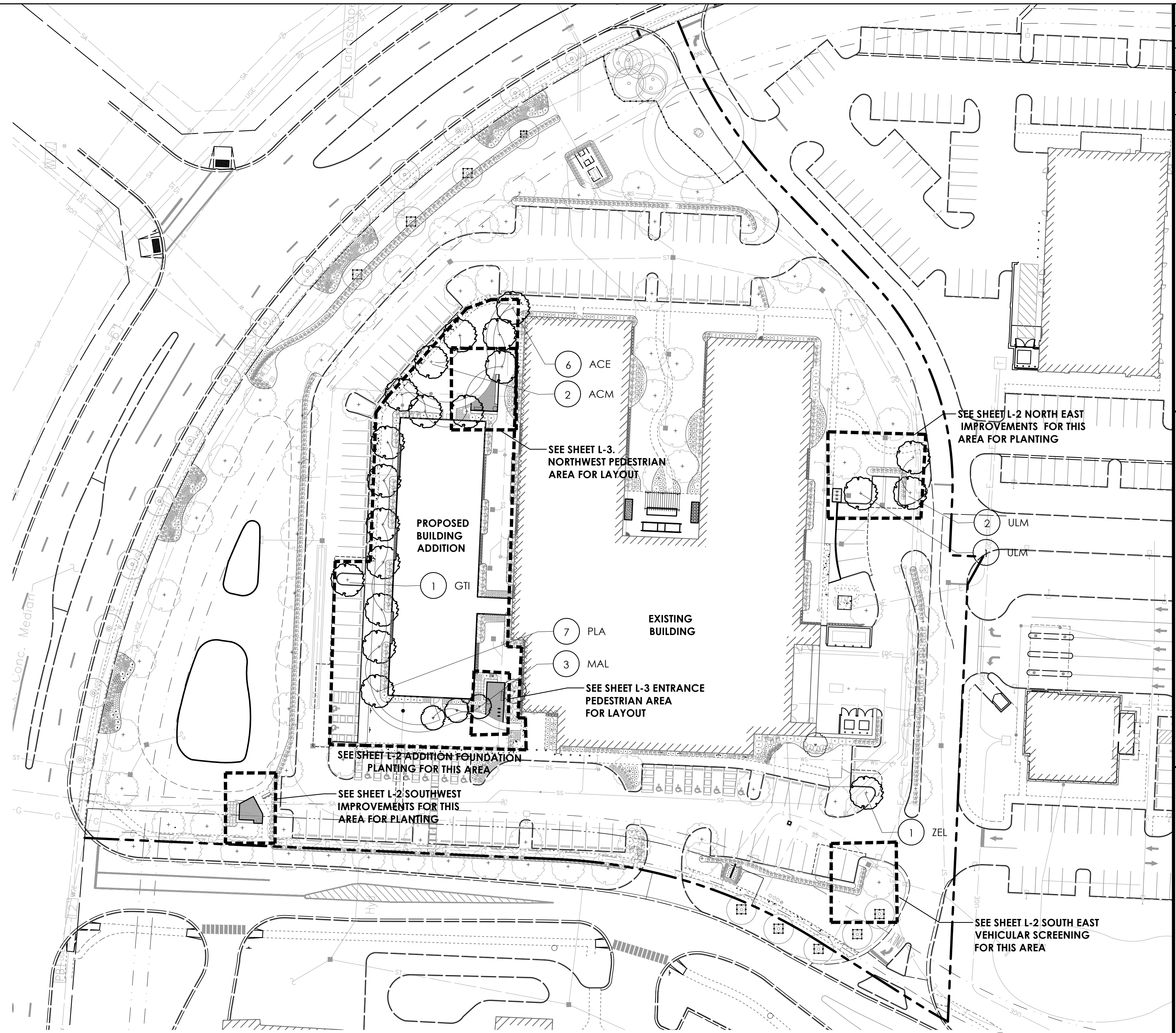
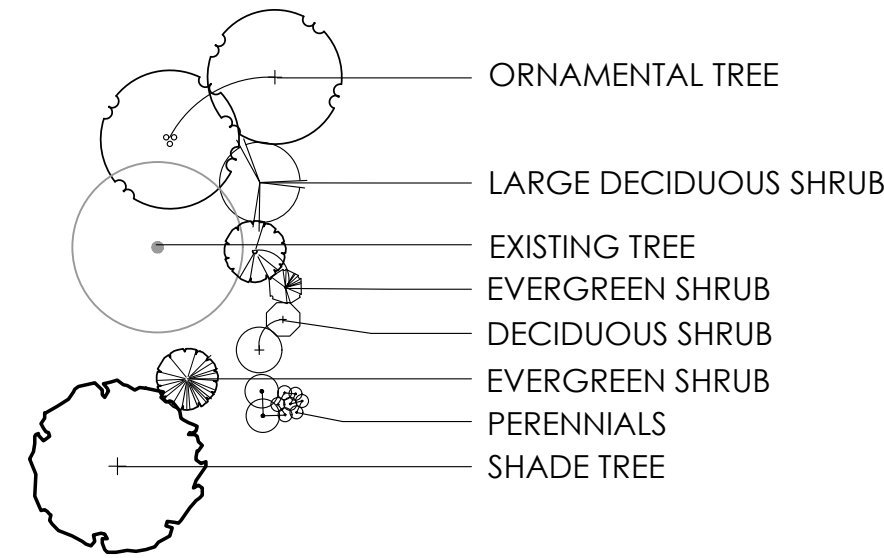
- ① LAWN AREA, PROVIDE POSITIVE DRAINAGE ACROSS ALL SURFACES.
- ② LANDSCAPE AREA, PROVIDE POSITIVE DRAINAGE ACROSS ALL SURFACES. PROVIDE MIN. 3" DEPTH HARDWOOD BARK MULCH.

GENERAL PLANTING NOTES:

1. ALL PLANTS SHALL MEET OR EXCEED STANDARDS SET IN THE USA STANDARD FOR NURSERY STOCK.
2. ALL PLANTING OPERATIONS SHALL ADHERE TO THE AMERICAN ASSOCIATION OF NURSERYMEN STANDARDS.
3. PLANT LOCATIONS AND BEDS SHALL BE LOCATED BY CONTRACTOR AND APPROVED BY LANDSCAPE ARCHITECT PRIOR TO INSTALLATION.
4. PLANTING BEDS SHALL HAVE A MINIMUM 3" DEEP SHREDDED HARDWOOD BARK MULCH. MULCH HEDGES IN A CONTINUOUS BED.
5. ALL PLANTING BEDS TO BE TILLED TO A MINIMUM DEPTH OF 12".
6. ALL PLANTING BEDS TO BE FERTILIZED WITH 10-10-10 OR APPROVED EQUAL.
7. SODDING / SEEDING BY LANDSCAPE CONTRACTOR.
8. THE LOCATION OF THE EXISTING UNDERGROUND UTILITIES ARE SHOWN IN AN APPROXIMATE WAY ONLY AND HAVE NOT BEEN INDEPENDENTLY VERIFIED BY THE OWNER OR ITS REPRESENTATIVE. THE CONTRACTOR SHALL DETERMINE THE EXACT LOCATION OF ALL EXISTING UTILITIES PRIOR TO COMMENCING WORK AND AGREES TO BE FULLY RESPONSIBLE FOR ANY AND ALL DAMAGES WHICH MIGHT BE OCCASIONED BY THE CONTRACTOR'S FAILURE TO EXACTLY LOCATE AND PRESERVE ANY AND ALL UNDERGROUND UTILITIES.
9. ALL AREAS DISTURBED BY CONSTRUCTION ARE TO BE RESTORED, FINE GRADED AND SEEDED/ SODDED.
10. ALL EXISTING PLANT MATERIAL SHOWN ON THIS PLAN IS TO BE PRESERVED UNLESS SPECIFICALLY NOTED OTHERWISE.

PLANT KEY TYPICALS

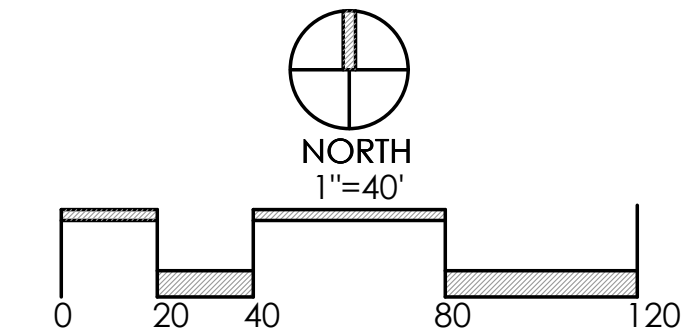
SEE PLANT LIST FOR SPECIFIC PLANT SPECIES



PLANT LIST

(CONTRACTOR RESPONSIBLE FOR ALL PLANTS SHOWN ON PLAN)

QTY	KEY	BOTANICAL NAME	COMMON NAME	SIZE	COND.	REMARKS
TREES						
6	ACE	ACER FREEMANII 'SIENNA'	SIENNA GLEN MAPLE	2.5" CAL.	B&B	RELOCATED/REPLACED
2	ACM	ACER CAMPESTRE	HEDGE MAPLE	2.5" CAL.	B&B	RELOCATED/REPLACED
1	GTI	GLEDITSIA TRIACANTHOS F. INERMIS 'SKYCOLE' SKYLINE	SKYLINE HONEYLOCUST	2.5" CAL.	B&B	NEW
3	MAL	MALUS 'CARDINAL'	CARDINAL CRABAPPLE	2" CAL.	B&B	RELOCATED/REPLACED
7	PLA	PLATANUS X ACERFOLIA 'EXCLAMATION'	LONDON PLANE TREE	2.5" CAL.	B&B	RELOCATED/REPLACED
3	ULM	ULMUS PARVIFOLIA	LACEBARK ELM	2.5" CAL.	B&B	(2) RELOCATED/REPLACED (1) NEW
1	ZEL	ZELKOVA SERATTA 'GREEN VASE'	GREEN VASE ZELKOVA	2.5" CAL.	B&B	RELOCATED/REPLACED



REVISIONS

OVERALL
LANDSCAPE PLAN
(ADDITION ONLY)

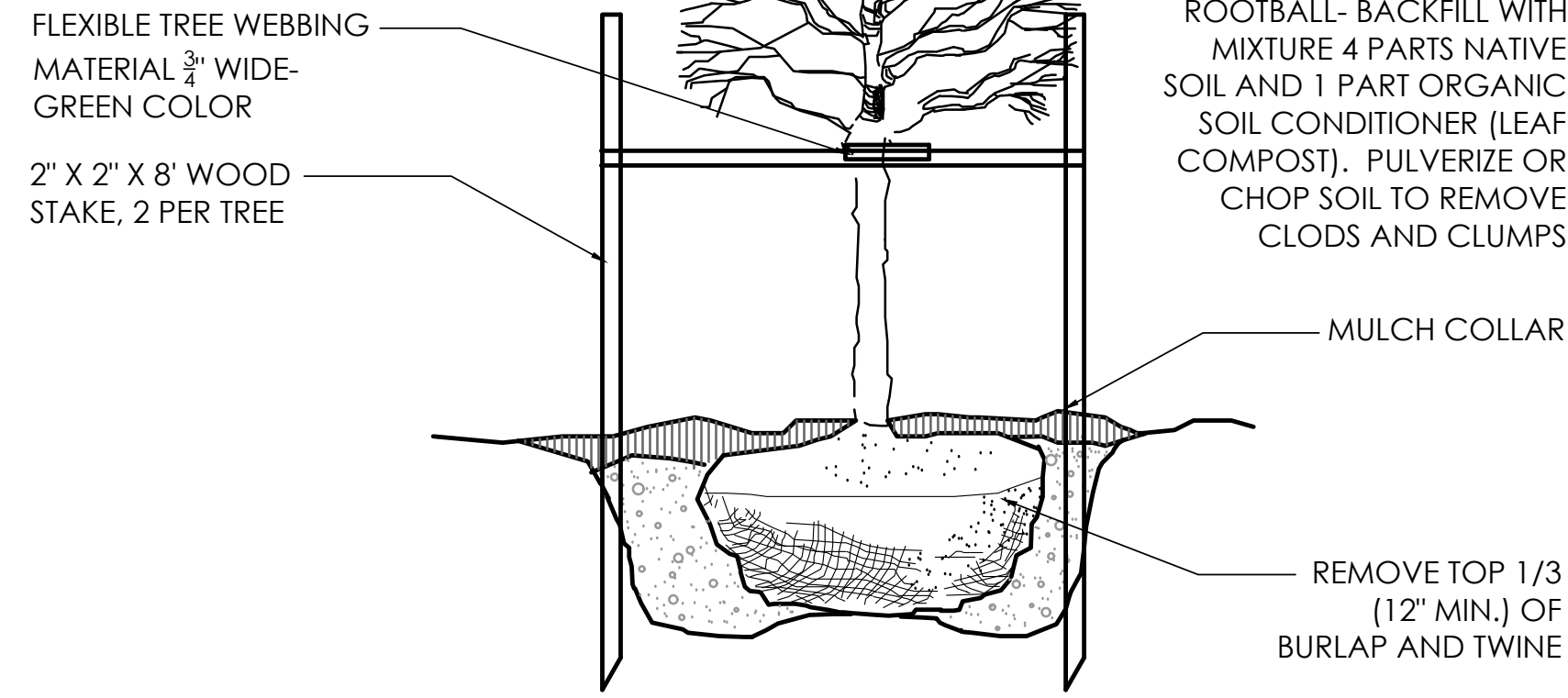
OHIO HEALTH REHAB
HOSPITAL EXPANSION
3805 EMERALD PARKWAY, DUBLIN, OHIO 43016
PREPARED FOR
SELECT MEDICAL

Faris Planning & Design
LAND PLANNING LANDSCAPE ARCHITECTURE
4876 Cemetery Road
P (614) 487-1964
Hilliard, OH 43026
www.farisplanninganddesign.com

DATE	08/24/23
PROJECT	18144
SHEET	

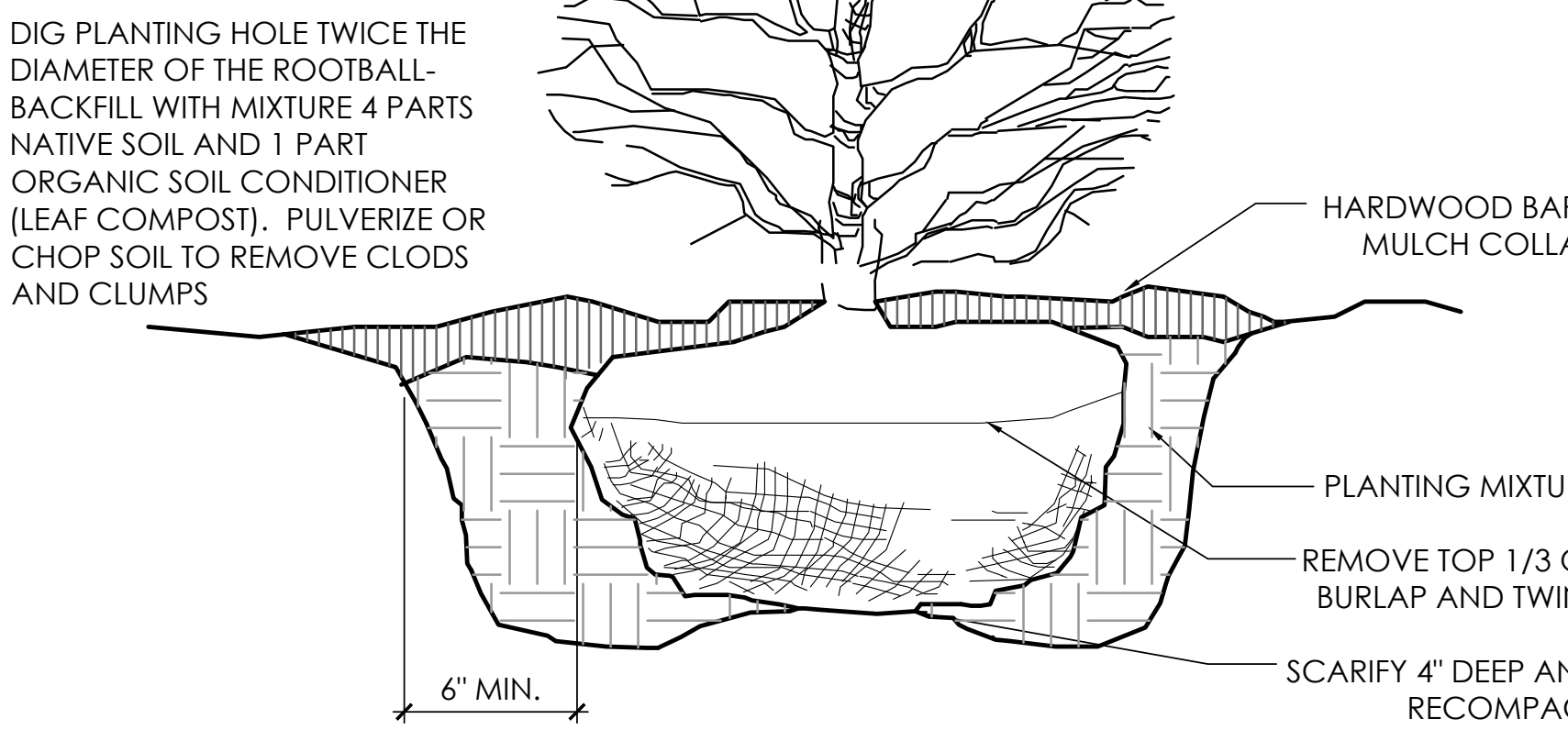
L-1.1

NOTE:
THE AMOUNT OF TREE AND SHRUB PRUNING SHALL BE LIMITED TO THE MINIMUM NECESSARY TO REMOVE DEAD OR INJURED TWIGS & BRANCHES. RETAIN NORMAL SHAPE. PLANT TREES AND EVERGREENS SO THE ROOT FLARE IS 2'-3" ABOVE FINISH GRADE

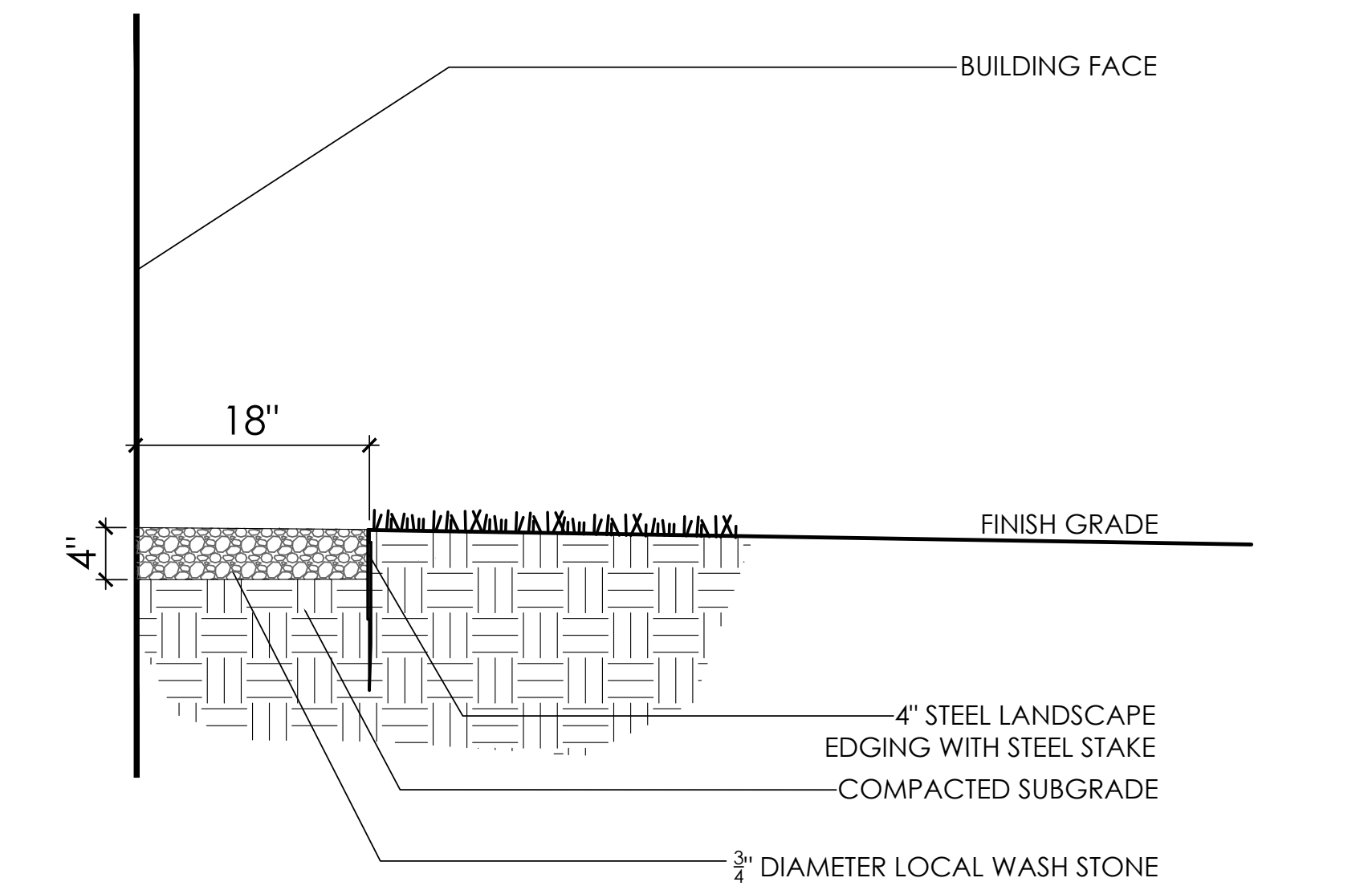


1 DECIDUOUS TREE
N.T.S. 01-1001

NOTE:
THE AMOUNT OF TREE AND SHRUB PRUNING SHALL BE LIMITED TO THE MINIMUM NECESSARY TO REMOVE DEAD OR INJURED TWIGS & BRANCHES. RETAIN NORMAL SHAPE. REMOVE EXCESS SOIL FROM THE TOP OF ROOT MASS. PLANT SHRUBS WITH TOP OF ROOT MASS AT FINISH GRADE.

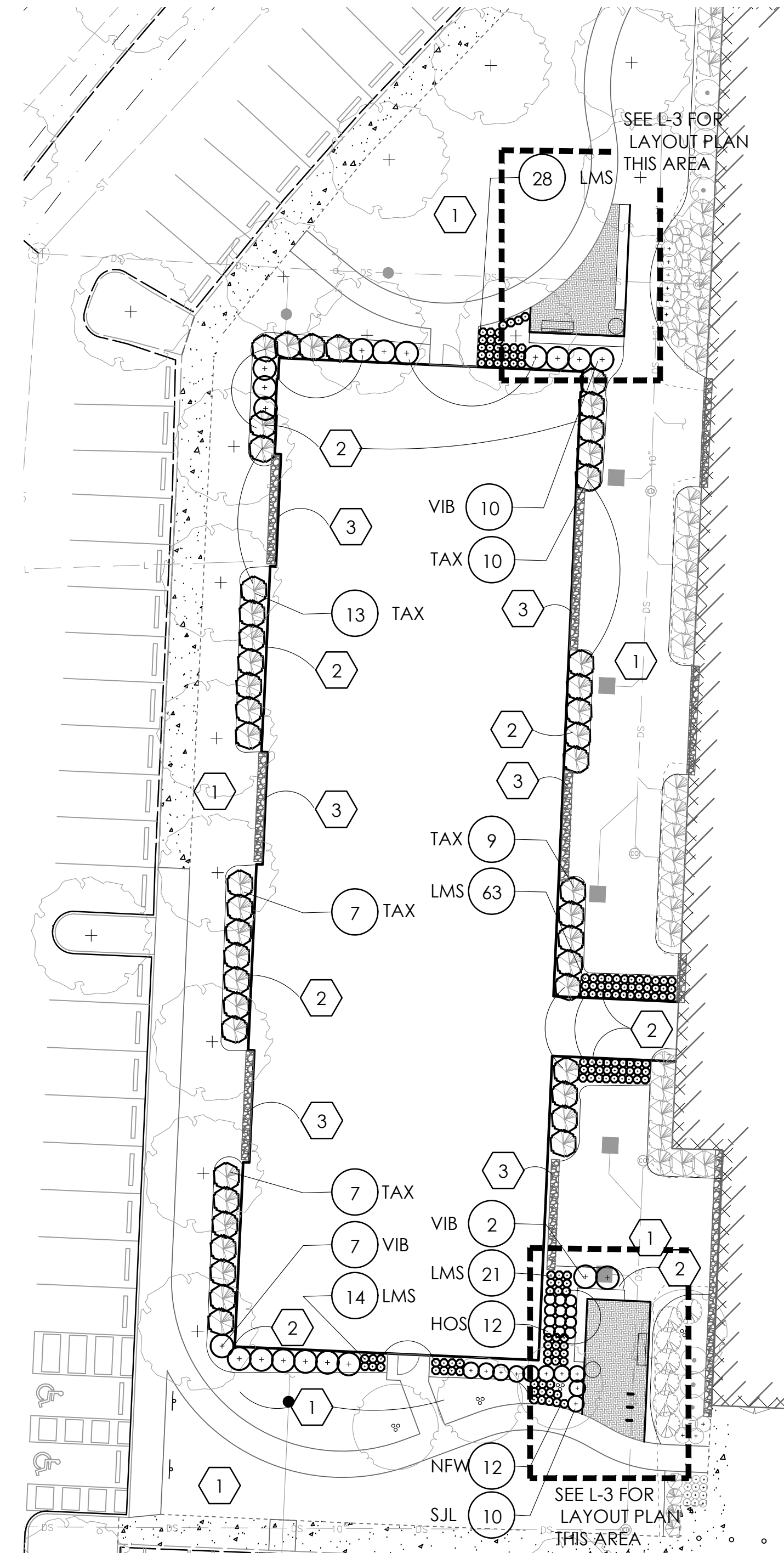


2 SHRUB PLANTING DETAIL
N.T.S. 01-1300

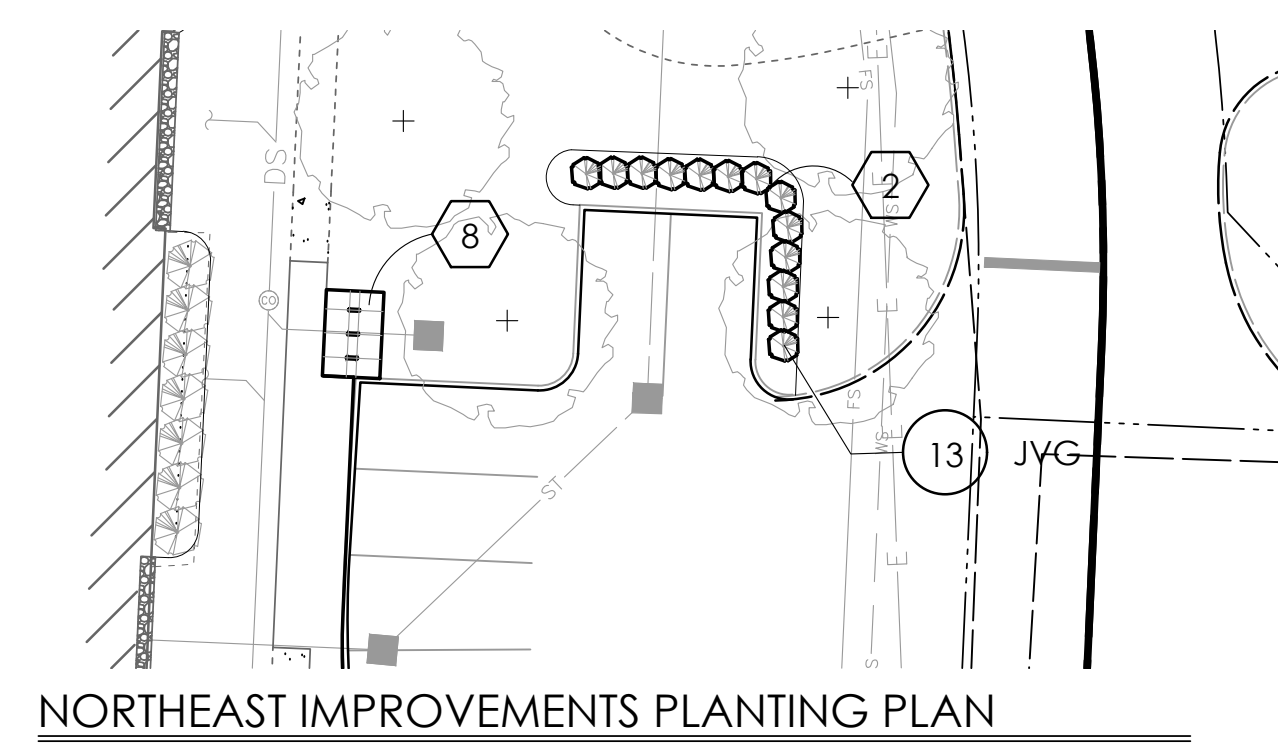


3 GRAVEL MAINTENANCE STRIP WITH STEEL EDGING
N.T.S.

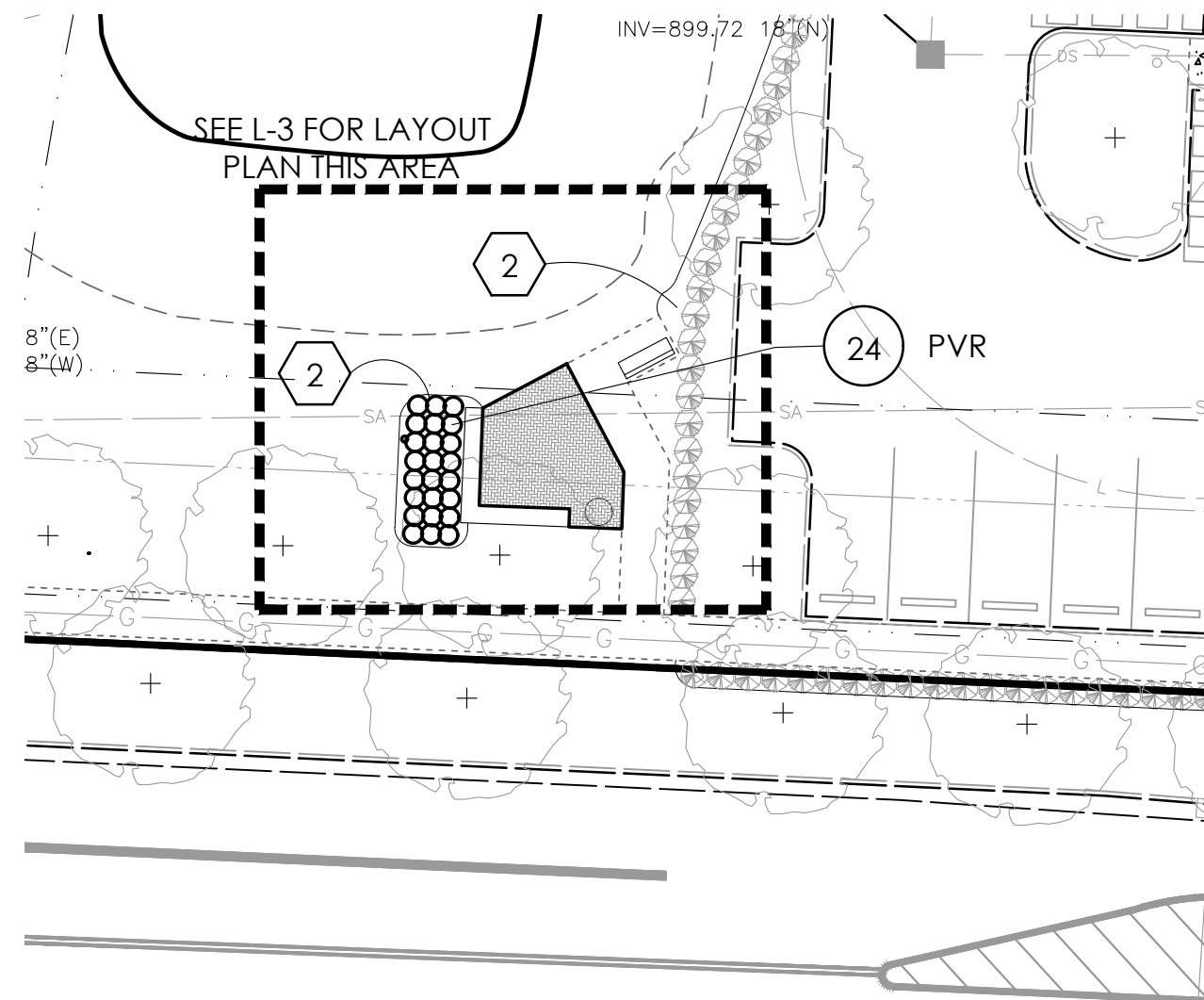
*DIG PLANTING HOLE TWICE THE DIAMETER OF THE ROOTBALL- BACKFILL WITH MIXTURE 4 PARTS NATIVE SOIL AND 1 PART ORGANIC SOIL CONDITIONER (LEAF COMPOST). PULVERIZE OR CHOP SOIL TO REMOVE CLODS AND CLUMPS



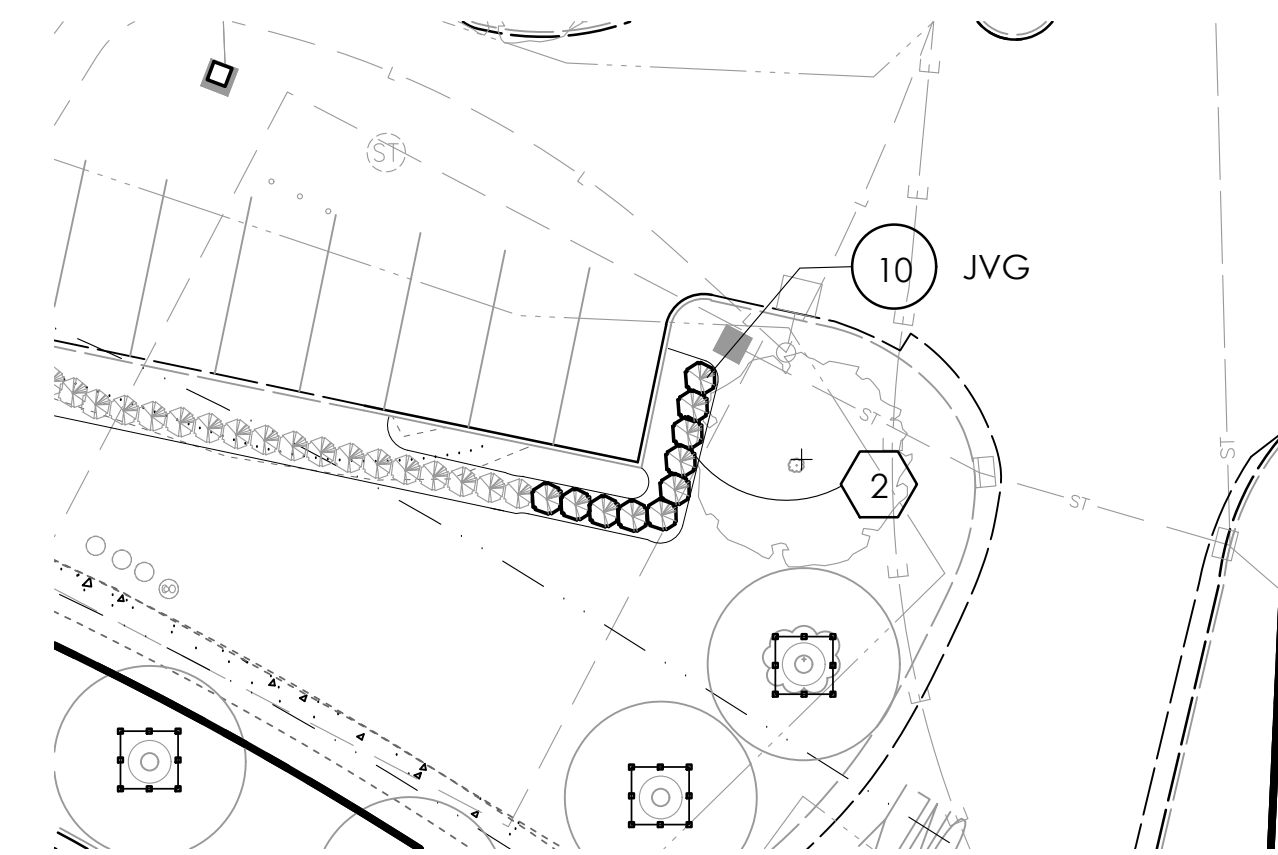
ADDITION FOUNDATION PLANTING PLAN



NORTHEAST IMPROVEMENTS PLANTING PLAN



SOUTHWEST IMPROVEMENTS PLANTING PLAN



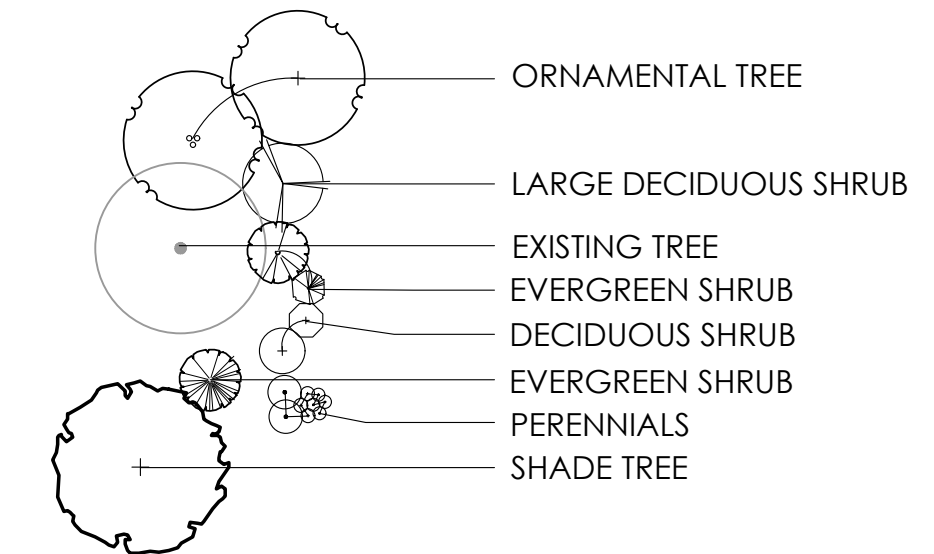
SOUTHEAST VEHICULAR SCREENING PLANTING PLAN

CONSTRUCTION NOTES:

- ① LAWN AREA, PROVIDE POSITIVE DRAINAGE ACROSS ALL SURFACES.
- ② LANDSCAPE AREA, PROVIDE POSITIVE DRAINAGE ACROSS ALL SURFACES. PROVIDE MIN. 3" DEPTH HARDWOOD BARK MULCH.
- ③ 18" WIDE GRAVEL MAINTENANCE STRIP ADJACENT BUILDING, SEE DETAIL 3, THIS SHEET
- ④ BIKE RACK. SEE DETAIL 6, SHEET L-3 FOR MORE INFORMATION.

PLANT KEY TYPICALS

SEE PLANT LIST FOR SPECIFIC PLANT SPECIES



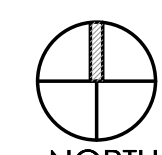
GENERAL PLANTING NOTES:

1. ALL PLANTS SHALL MEET OR EXCEED STANDARDS SET IN THE USA STANDARD FOR NURSERY STOCK.
2. ALL PLANTING OPERATIONS SHALL ADHERE TO THE AMERICAN ASSOCIATION OF NURSERYMEN STANDARDS.
3. PLANT LOCATIONS AND BEDS SHALL BE LOCATED BY CONTRACTOR AND APPROVED BY LANDSCAPE ARCHITECT PRIOR TO INSTALLATION.
4. PLANTING BEDS SHALL HAVE A MINIMUM 3" DEEP SHREDDED HARDWOOD BARK MULCH. MULCH HEDGES IN A CONTINUOUS BED.
5. ALL PLANTING BEDS TO BE TILLED TO A MINIMUM DEPTH OF 12".
6. ALL PLANTING BEDS TO BE FERTILIZED WITH 10-10-10 OR APPROVED EQUAL.
7. SODDING / SEEDING BY LANDSCAPE CONTRACTOR.
8. THE LOCATION OF THE EXISTING UNDERGROUND UTILITIES ARE SHOWN IN AN APPROXIMATE WAY ONLY AND HAVE NOT BEEN INDEPENDENTLY VERIFIED BY THE OWNER OR ITS REPRESENTATIVE. THE CONTRACTOR SHALL DETERMINE THE EXACT LOCATION OF ALL EXISTING UTILITIES PRIOR TO COMMENCING WORK AND AGREES TO BE FULLY RESPONSIBLE FOR ANY AND ALL DAMAGES WHICH MIGHT BE OCCASIONED BY THE CONTRACTOR'S FAILURE TO EXACTLY LOCATE AND PRESERVE ANY AND ALL UNDERGROUND UTILITIES.
9. ALL AREAS DISTURBED BY CONSTRUCTION ARE TO BE RESTORED, FINE GRADED AND SEEDED/ SODDED.
10. ALL EXISTING PLANT MATERIAL SHOWN ON THIS PLAN IS TO BE PRESERVED UNLESS SPECIFICALLY NOTED OTHERWISE.

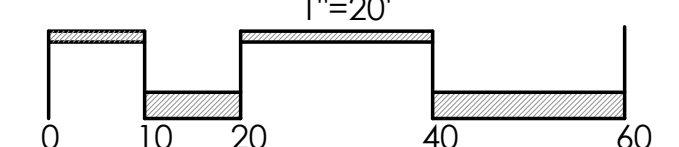
PLANT LIST

(CONTRACTOR RESPONSIBLE FOR ALL PLANTS SHOWN ON PLAN)

SHRUBS/PERENNIALS					
23	JVG	JUNIPERUS VIRGINIANA 'GREY OWL'	GREY OWL JUNIPER	24" HGT.	B&B
46	TAX	TAXUS x MEDIA 'BROWNII'	BROWNII YEW	24" HGT.	B&B
19	VIB	VIBURNUM CARLESII	KOREANSPICE VIBURNUM	24" HGT.	CONT.
10	SJL	SPIRAEA JAPONICA 'LITTLE PRINCESS'	LITTLE PRINCESS SPIREA	18" HGT.	CONT.
24	PVR	PANICUM VIRGATUM 'RR1'	RUBY RIBBONS SWITCH GRASS	NO.1	CONT.
126	LMS	LIRIOPE MUSCARI 'SILVERY SUNPROOF'	SILVERY SUNPROOF LILYTURF	NO.1	CONT.
12	NFW	NEPETA X FAASSENII 'WALKER'S LOW'	WALKER'S LOW CATMINT	NO.1	CONT.
12	HOS	HOSTA X 'PRAIRIE SKY'	PRAIRIE SKY HOSTA	NO.1	CONT.



NORTH
1"=20'



REVISIONS

LANDSCAPE ENLARGEMENT PLAN

OHIO HEALTH REHAB HOSPITAL EXPANSION
3805 EMERALD PARKWAY, DUBLIN, OHIO 43016
PREPARED FOR
SELECT MEDICAL

Faris Planning & Design
LANDSCAPE ARCHITECTURE

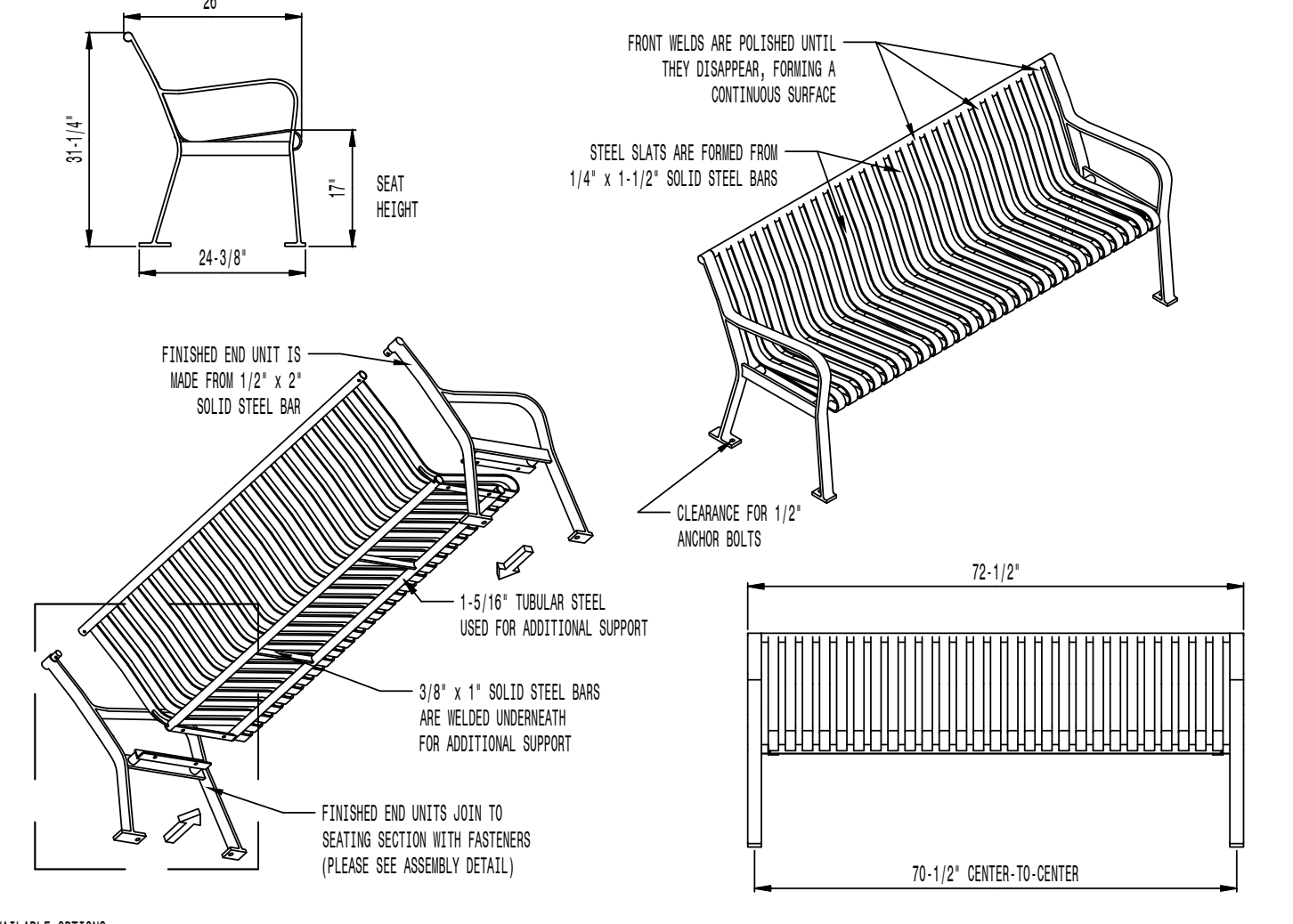
Hilliard, OH 43026
4876 Cemetery Road
P (614) 487-1964
www.farisplanninganddesign.com

DATE 08/24/23

PROJECT 18144

SHEET

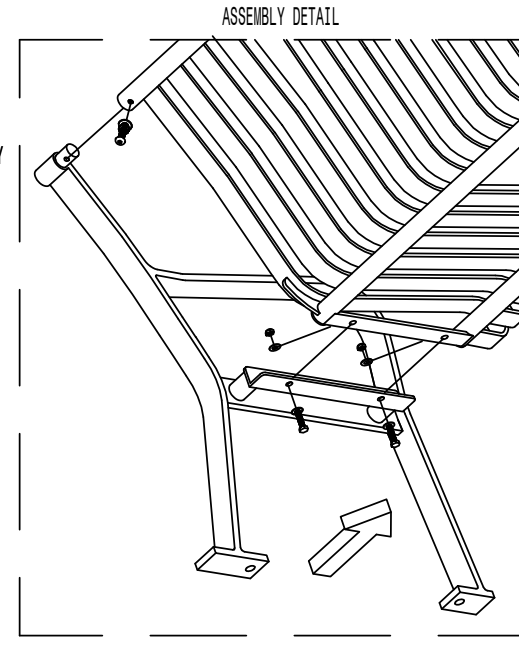
L-2



AVAILABLE OPTIONS
POWDER COATING
10 STANDARD COLORS, 2 OPTIONAL METALLIC COLORS,
CUSTOM COLORS (INCLUDING THE RAL RANGE)
INTERMEDIATE & CENTER ARMRESTS
4', 6', & 8' AVAILABLE WITH OPTIONAL SOLID STEEL ARMRESTS

LENGTHS
STANDARD 4'
STANDARD 6' LENGTH SHOWN
STANDARD 8'

NOTES:
1. DRAWINGS NOT TO SCALE. DO NOT SCALE DRAWINGS.
2. ALL FABRICATED METAL COMPONENTS ARE STEEL SHOT-BLASTED, STONED, PHOSPHATIZED, PRIME-PAINTED, AND ELECTROSTATICALLY POWDER-COATED WITH T.S.I.C. POLYESTER POWDER COATINGS. PRODUCTS ARE FULLY CLEANED AND PRE-TREATED, PRIME-PAINTED AND COATED WHILE HOT TO FILL CREVICES AND BUILD COATING FILM. COATED PARTS ARE THEN FULLY CURED TO COATING MANUFACTURER'S SPECIFICATIONS. THE THICKNESS OF THE RESULTING FINISH AVERAGES 8-10 MILS (200-250 MICRONS).
3. IT IS NOT RECOMMENDED TO LOCATE ANCHOR BOLTS UNTIL BENCH IS IN PLACE. THIS VICTOR STANLEY, INC. PRODUCT MUST BE PERMANENTLY AFFIXED TO THE GROUND. CONSULT YOUR LOCAL CODES FOR REGULATIONS.
4. ANCHOR BOLTS NOT PROVIDED BY VICTOR STANLEY, INC.
5. FOR HIGH SALT ABUSIVE CLIMATES, HOT DIP GALVANIZING BEFORE POWDER COATING IS AVAILABLE. SEE WRITTEN SPECIFICATIONS FOR DETAILS.
6. ALL SPECIFICATIONS ARE SUBJECT TO CHANGE. CONTACT MANUFACTURER FOR DETAILS.
7. THIS PRODUCT IS SHIPPED PARTIALLY UNASSEMBLED.

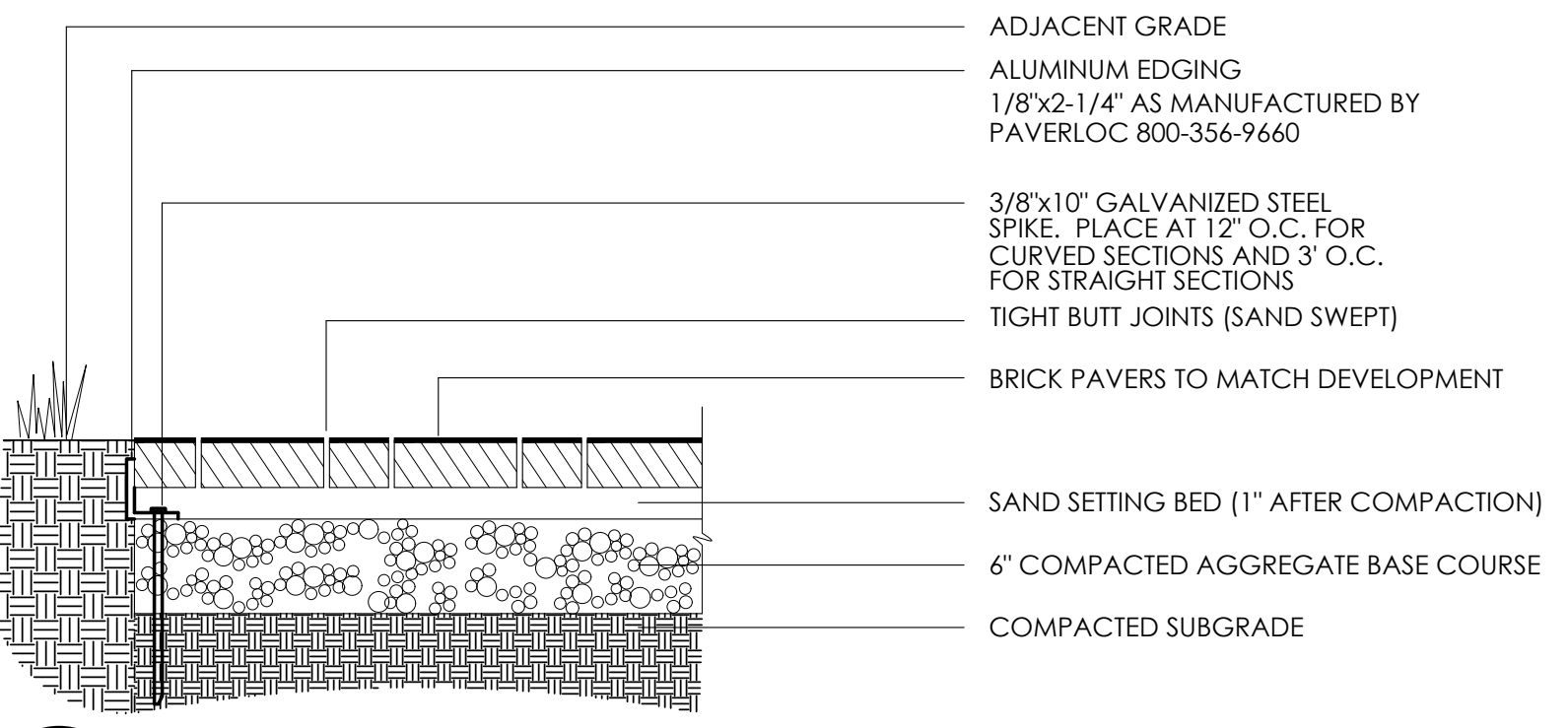


RB-28
STEREOLITES™ RB-SERIES
ALL STEEL CONToured BENCH
SHOWN: STANDARD 6-FOOT LENGTH

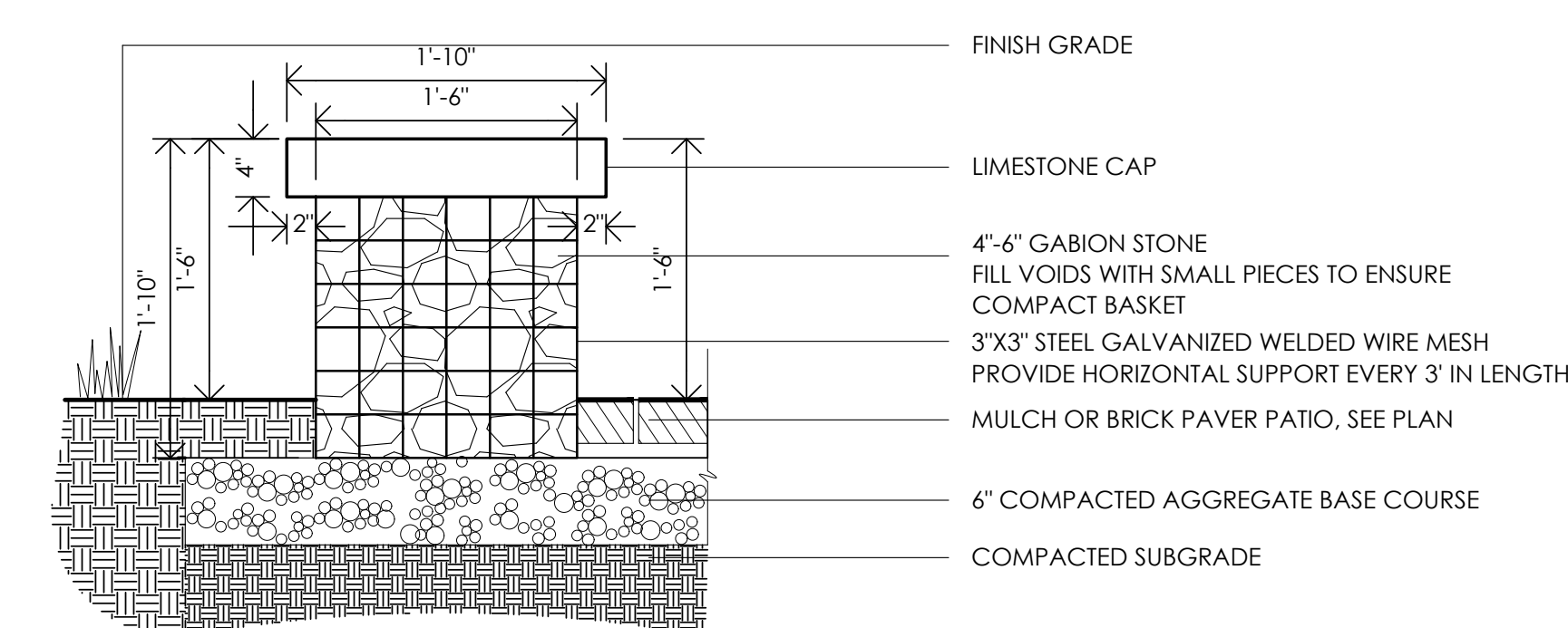
COPYRIGHT 2012 VICTOR STANLEY, INC.® ALL RIGHTS RESERVED
REV. 11/09/12 DRAWN L.S.L. 2012-1126

1 6' BENCH WITH BACK
SCALE: NTS

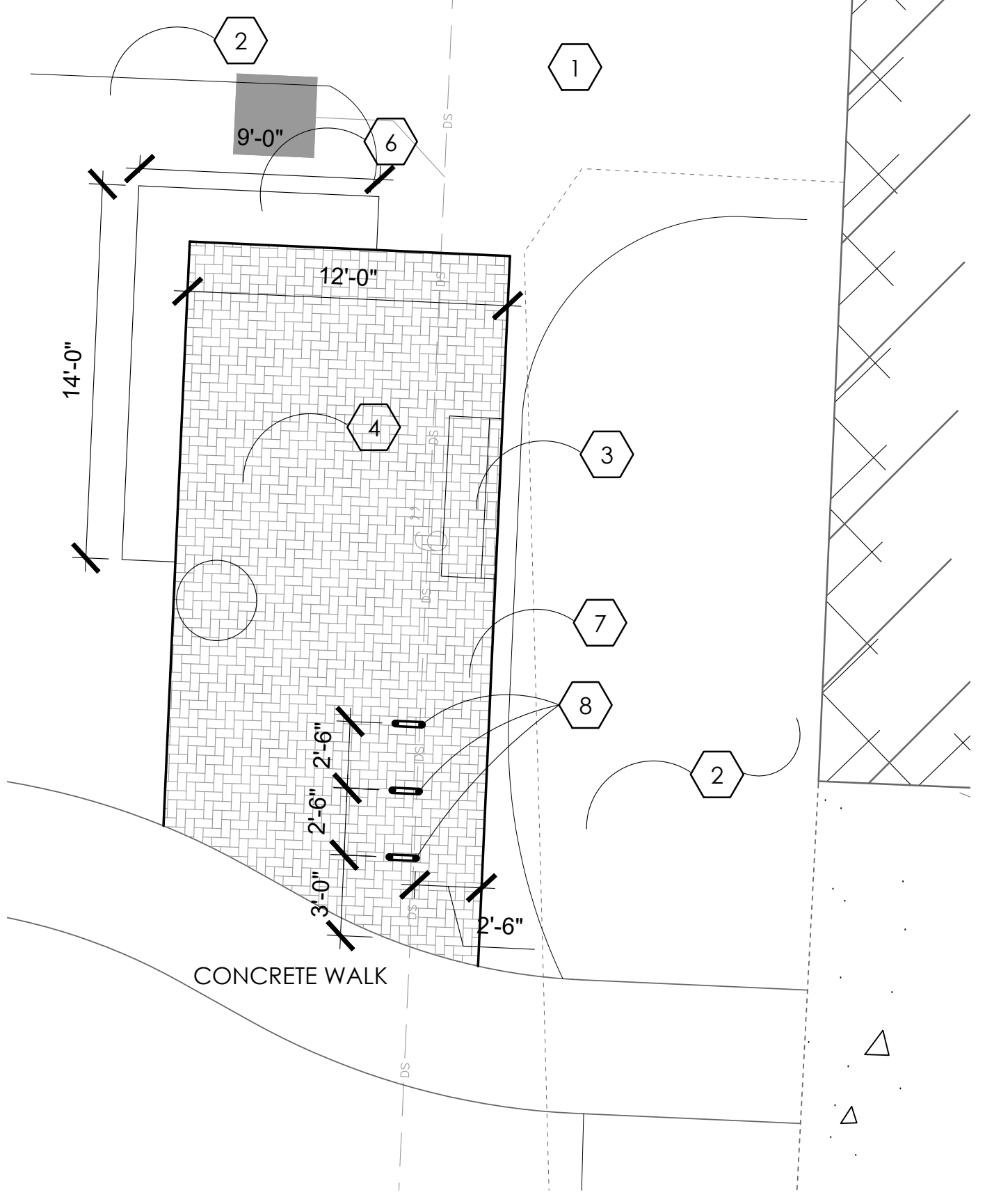
NOTES:
1. HERRINGBONE PATTERN
2. INSTALL ALUMINUM EDGING PER MANUFACTURERS RECOMMENDATIONS.



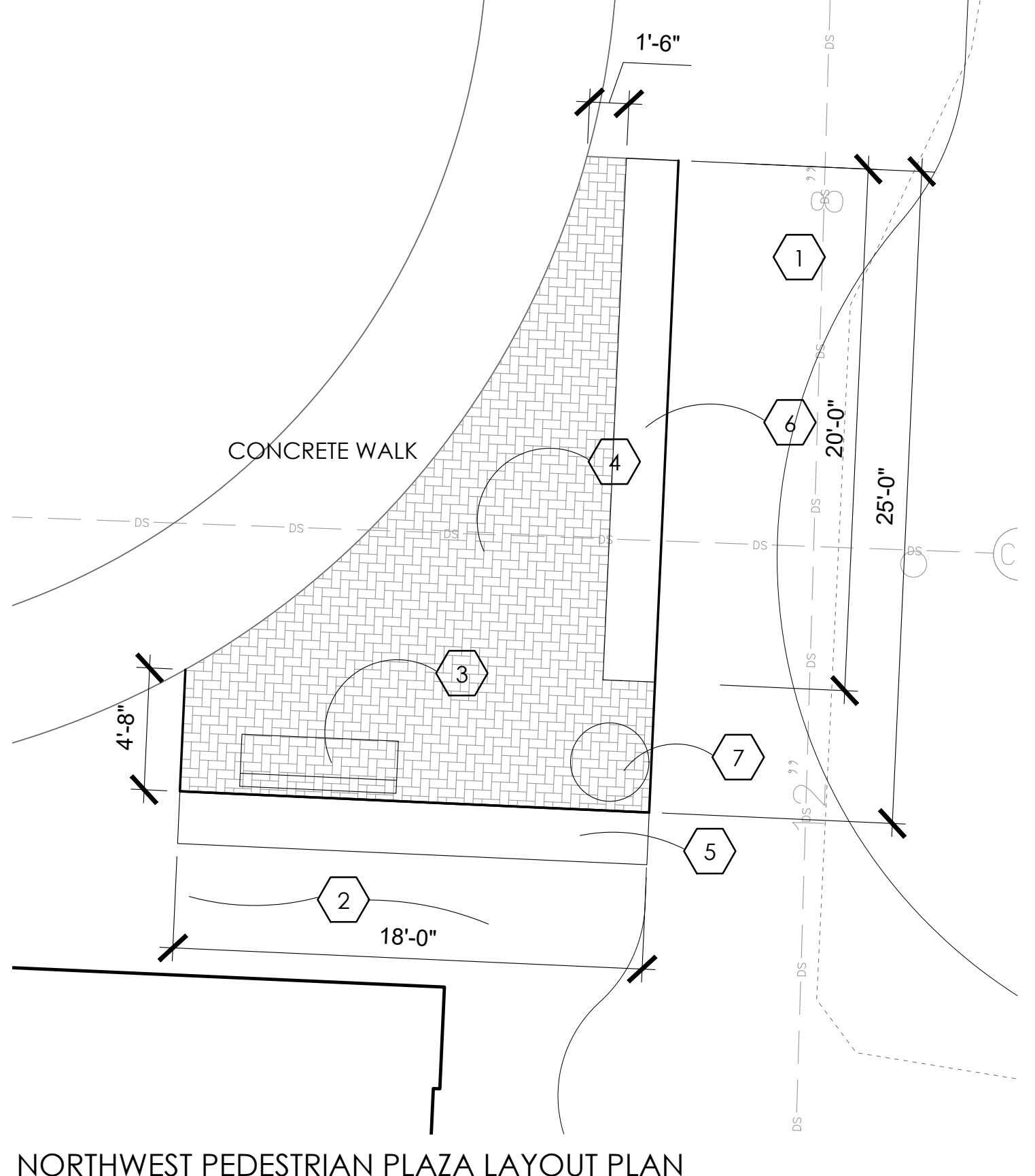
2 BRICK PAVEMENT
SCALE 1"= 1'-0"



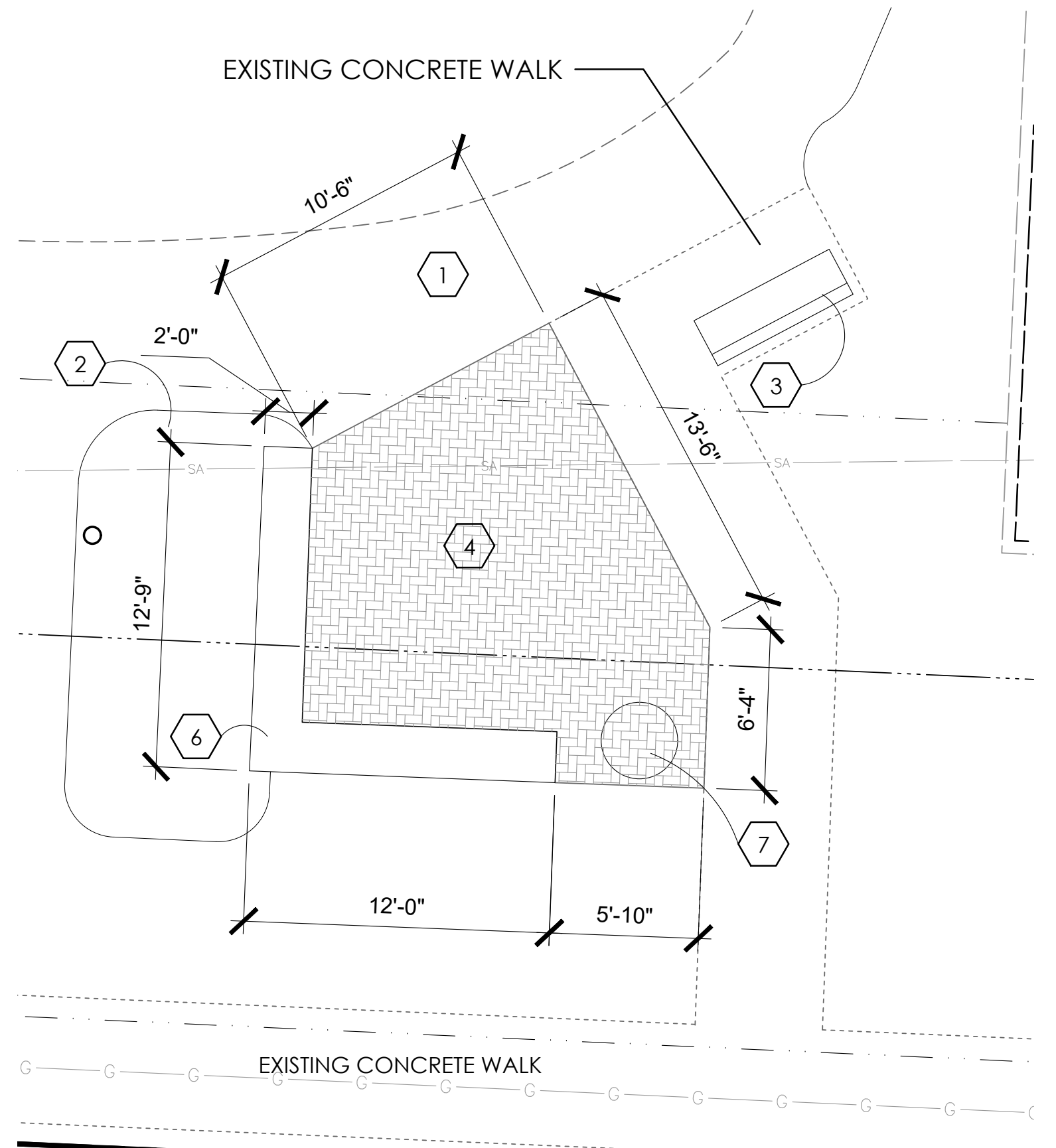
4 LOW GABION WALL
SCALE 1"= 1'-0"



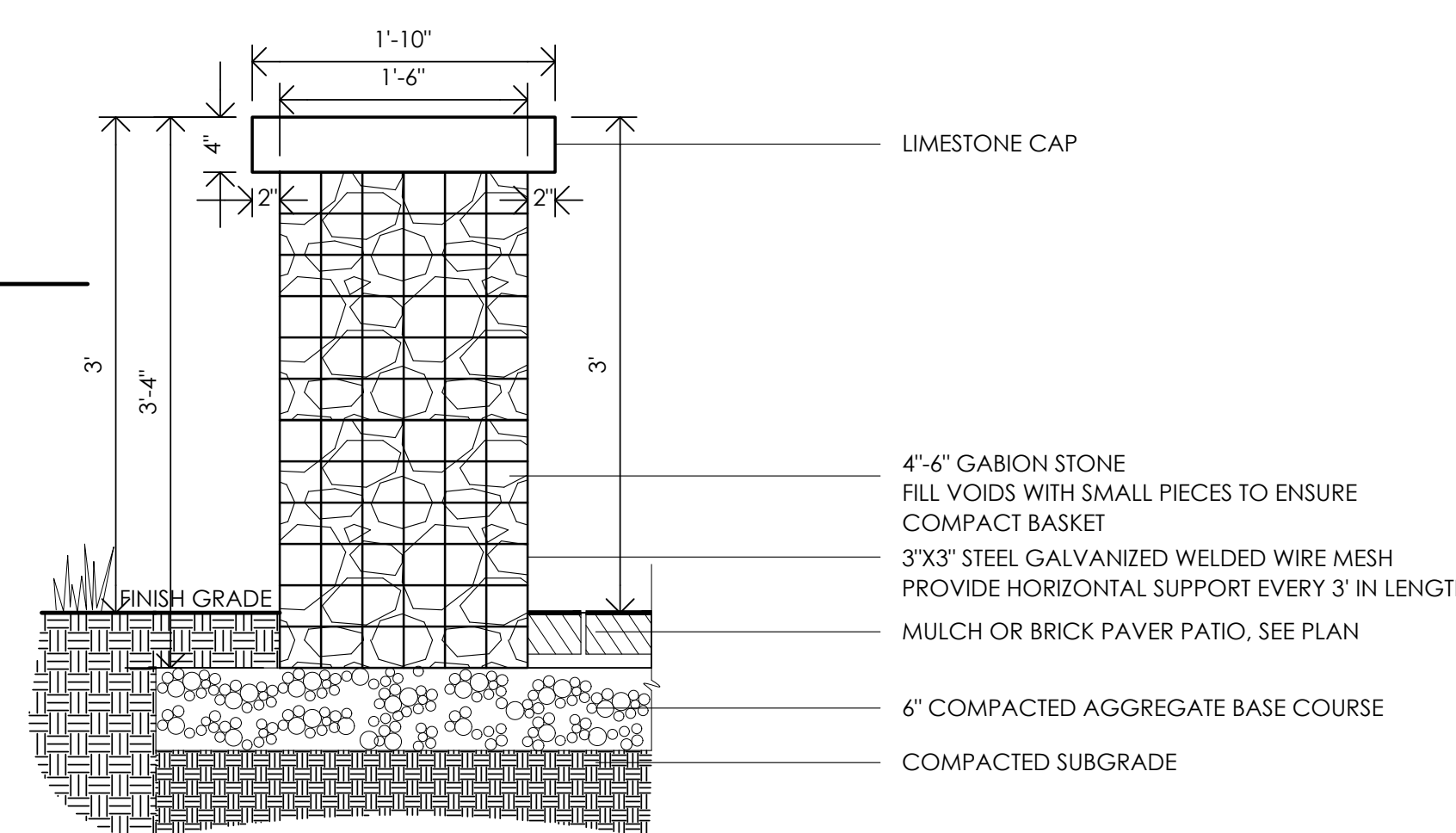
MAIN ENTRANCE PEDESTRIAN PLAZA LAYOUT PLAN



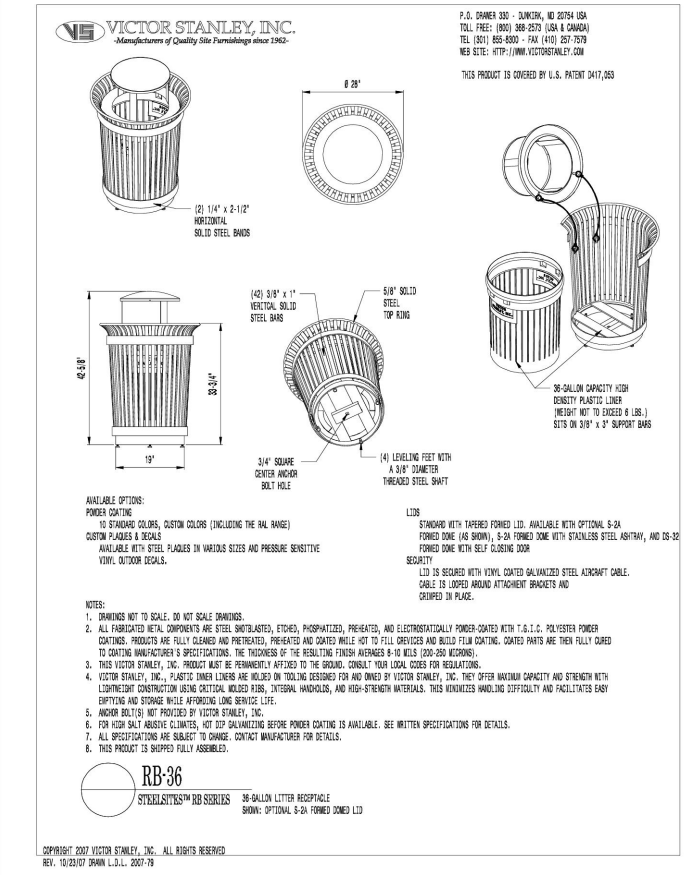
NORTHWEST PEDESTRIAN PLAZA LAYOUT PLAN



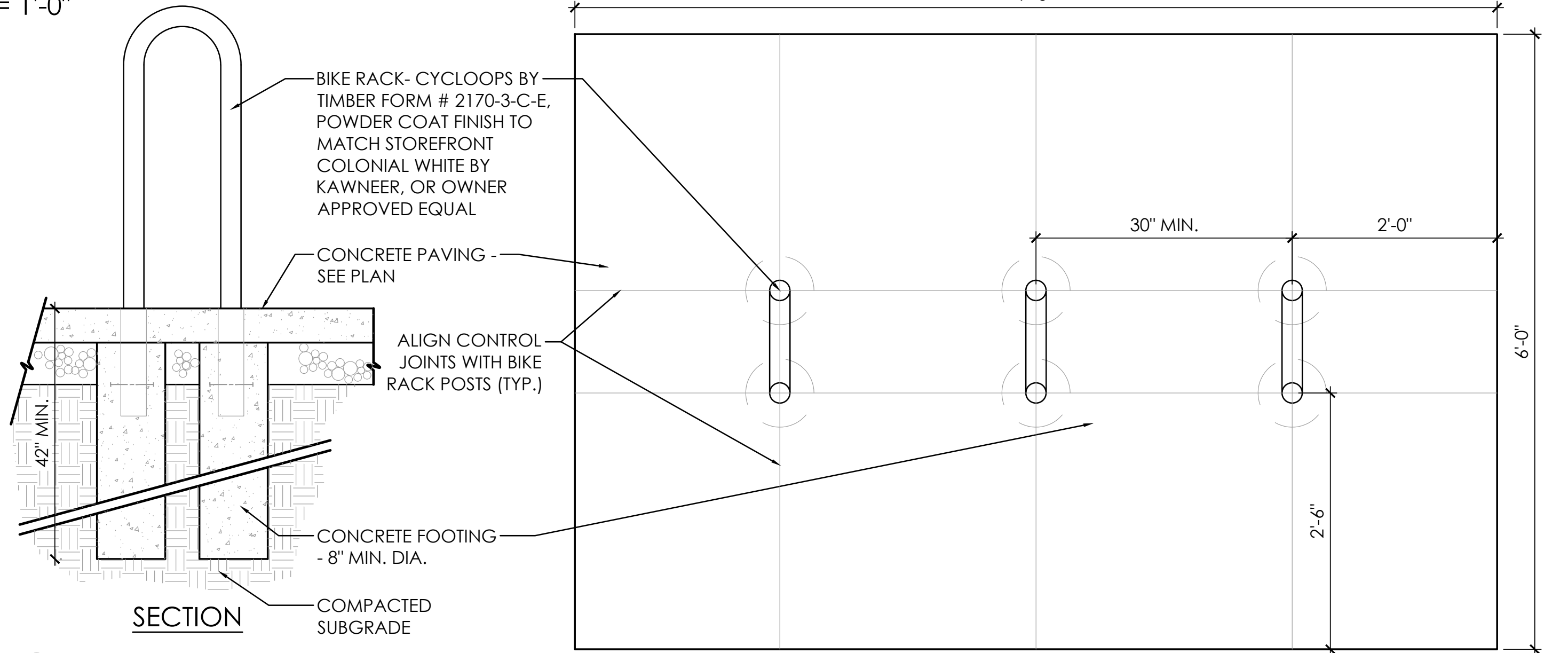
SOUTHWEST PEDESTRIAN PLAZA LAYOUT PLAN



3 HIGH GABION WALL
SCALE 1"= 1'-0"



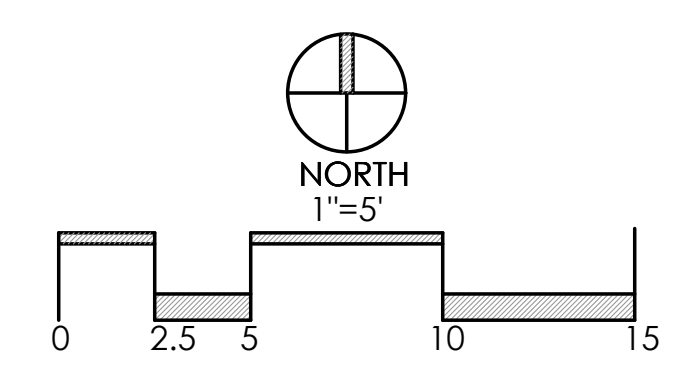
5 LITTER RECEPTACLE WITH DOME LID
SCALE: NTS



6 BIKE RACK DETAIL (MULTIPLES)
N.T.S.

CONSTRUCTION NOTES:

- 1 LAWN AREA. PROVIDE POSITIVE DRAINAGE ACROSS ALL SURFACES.
- 2 LANDSCAPE AREA. PROVIDE POSITIVE DRAINAGE ACROSS ALL SURFACES. PROVIDE MIN. 3" DEPTH HARDWOOD BARK MULCH.
- 3 STEELITES RB-28 6' BENCH OR OWNER APPROVED EQUAL, POWDER COATING BLACK. AVAILABLE THROUGH VICTOR STANLEY, WWW.VICTORSTANLEY.COM. 1800-368-2573. SEE DETAIL 1, THIS SHEET FOR MORE INFORMATION- REUSE EXISTING
- 4 BRICK PAVEMENT PATIO, REUSE EXISTING, BLEND IN NEW IF NEEDED, BRICK COLOR TO MATCH BUILDING. SEE DETAIL 2, THIS SHEET FOR MORE INFORMATION
- 5 3' HGT. GABION WALL WITH LIMESTONE CAP. SEE DETAIL 3, THIS SHEET FOR MORE INFORMATION. REUSE EXISTING STONES, CAP, AND BASKETS. SUPPLEMENT AS NEEDED
- 6 18" HGT. GABION WALL WITH LIMESTONE CAP. SEE DETAIL 4, THIS SHEET FOR MORE INFORMATION. REUSE EXISTING STONES, CAP, AND BASKETS. SUPPLEMENT AS NEEDED
- 7 STEELITES RB-36 36-GALLON LITTER RECEPTACLE WITH DOME LID OR OWNER APPROVED EQUAL POWDER COATING BLACK. AVAILABLE THROUGH VICTOR STANLEY, WWW.VICTORSTANLEY.COM. 1800-368-2573. SEE DETAIL 5, THIS SHEET FOR MORE INFORMATION REUSE EXISTING
- 8 BIKE RACK. SEE DETAIL 6, SHEET L-3 FOR MORE INFORMATION.



REVISIONS	

PEDESTRIAN AREA LAYOUT PLAN

OHIO HEALTH REHAB HOSPITAL EXPANSION
3805 EMERALD PARKWAY, DUBLIN, OHIO 43016
PREPARED FOR
SELECT MEDICAL

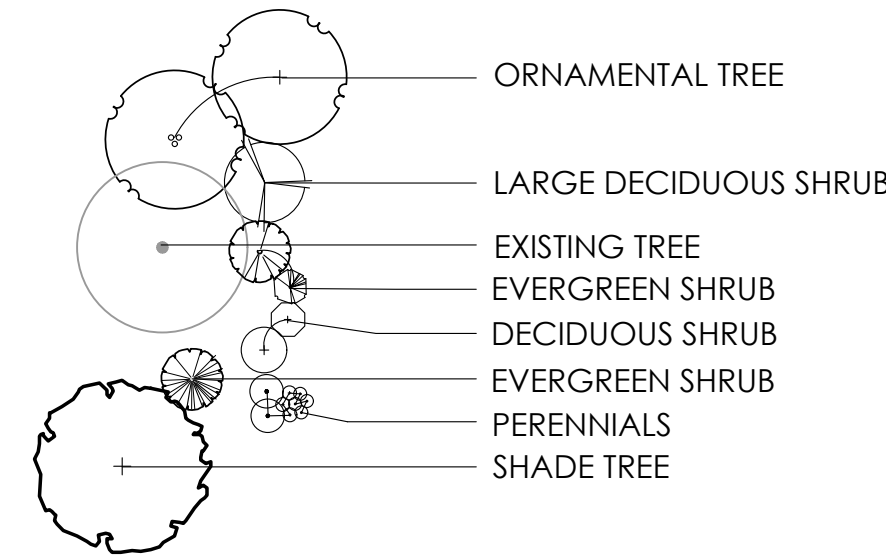
Faris Planning & Design
LAND PLANNING LANDSCAPE ARCHITECTURE
Hilliard, OH 43026
4876 Cemetery Road
P (614) 487-1964
www.farisplanninganddesign.com

DATE	08/24/23
PROJECT	18144
SHEET	

L-3

PLANT KEY TYPICALS

SEE PLANT LIST FOR SPECIFIC PLANT SPECIES

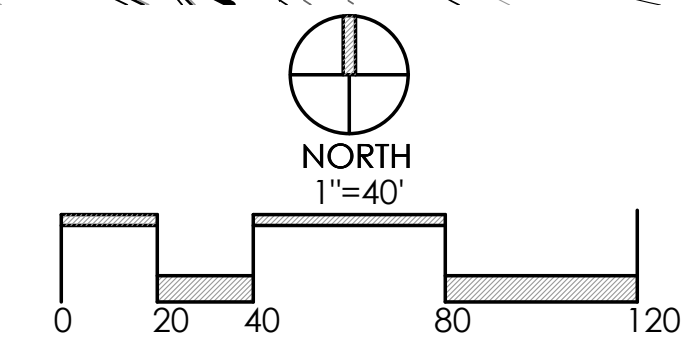
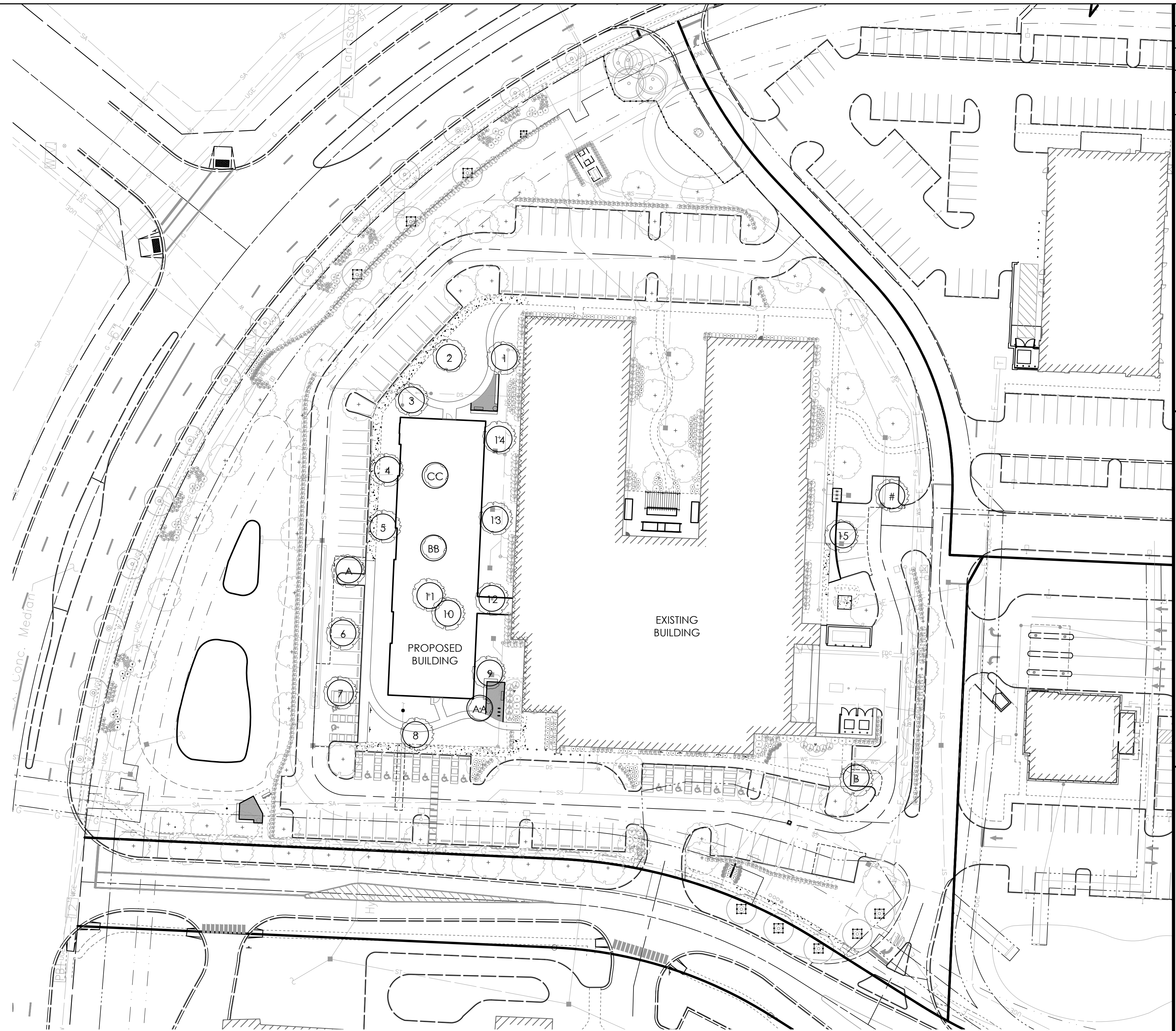


TREE REMOVAL/REPLACEMENT PLANT LIST

(CONTRACTOR RESPONSIBLE FOR ALL PLANTS SHOWN ON PLAN)

KEY	BOTANICAL NAME	COMMON NAME	SIZE	REMARKS
REPLACEMENT TREES				
1	ACER FREEMANII 'SIENNA'	SIENNA GLEN MAPLE	2.5" CAL.	RELOCATED/REPLACED
2	ACER CAMPESTRE	HEDGE MAPLE	2.5" CAL.	RELOCATED/REPLACED
3	ACER CAMPESTRE	HEDGE MAPLE	2.5" CAL.	RELOCATED/REPLACED
4	PLATANUS X ACERFOLIA 'EXCLAMATION'	LONDON PLANETREE	2.5" CAL.	RELOCATED/REPLACED
5	PLATANUS X ACERFOLIA 'EXCLAMATION'	LONDON PLANETREE	2.5" CAL.	RELOCATED/REPLACED
6	PLATANUS X ACERFOLIA 'EXCLAMATION'	LONDON PLANETREE	2.5" CAL.	RELOCATED/REPLACED
7	PLATANUS X ACERFOLIA 'EXCLAMATION'	LONDON PLANETREE	2.5" CAL.	RELOCATED/REPLACED
8	ACER FREEMANII 'SIENNA'	SIENNA GLEN MAPLE	2.5" CAL.	RELOCATED/REPLACED
9	ACER FREEMANII 'SIENNA'	SIENNA GLEN MAPLE	2.5" CAL.	RELOCATED/REPLACED
10	PLATANUS X ACERFOLIA 'EXCLAMATION'	LONDON PLANETREE	2.5" CAL.	RELOCATED/REPLACED
11	PLATANUS X ACERFOLIA 'EXCLAMATION'	LONDON PLANETREE	2.5" CAL.	RELOCATED/REPLACED
12	ACER FREEMANII 'SIENNA'	SIENNA GLEN MAPLE	2.5" CAL.	RELOCATED/REPLACED
13	ACER FREEMANII 'SIENNA'	SIENNA GLEN MAPLE	2.5" CAL.	RELOCATED/REPLACED
14	ACER FREEMANII 'SIENNA'	SIENNA GLEN MAPLE	2.5" CAL.	RELOCATED/REPLACED
15	ULMUS PARVIFOLIA	LACEBARK ELM	2.5" CAL.	RELOCATED/REPLACED
FULFILLED GROUND COVERAGE REQUIREMENTS				
A	PLATANUS X ACERFOLIA 'EXCLAMATION'	LONDON PLANETREE	2.5" CAL.	RELOCATED/REPLACED
B	ZELKOVA SERATTA 'GREEN VASE'	GREEN VASE ZELKOVA	2.5" CAL.	RELOCATED/REPLACED
FULFILLED PERIMETER REQUIREMENTS				
#	ULMUS PARVIFOLIA	LACEBARK ELM	2.5" CAL.	RELOCATED/REPLACED
ORNAMENTAL TREES - NOT REQUIRED				
AA	MALUS 'CARDINAL'	CARDINAL CRABAPPLE	2" CAL.	RELOCATED/REPLACED
BB	MALUS 'CARDINAL'	CARDINAL CRABAPPLE	2" CAL.	RELOCATED/REPLACED
CC	MALUS 'CARDINAL'	CARDINAL CRABAPPLE	2" CAL.	RELOCATED/REPLACED

ALL TREES NOTED AS RELOCATED/REPLACED, THIS SHEET, REFER TO SHEET L-1.1 FOR LOCATION
 REPLACE ONLY DEAD/DISEASED TREES



REVISIONS	

**TREE RELOCATION
PLAN**

**OHIO HEALTH REHAB
HOSPITAL EXPANSION**
PREPARED FOR
 SELECT MEDICAL
 3805 EMERALD PARKWAY, DUBLIN, OHIO 43016

Faris Planning & Design

LAND PLANNING LANDSCAPE ARCHITECTURE
 Hilliard, OH 43026
 4876 Cemetery Road
 P (614) 487-1964
 www.farisplanninganddesign.com

DATE	08/24/23
PROJECT	18144
SHEET	

L-4