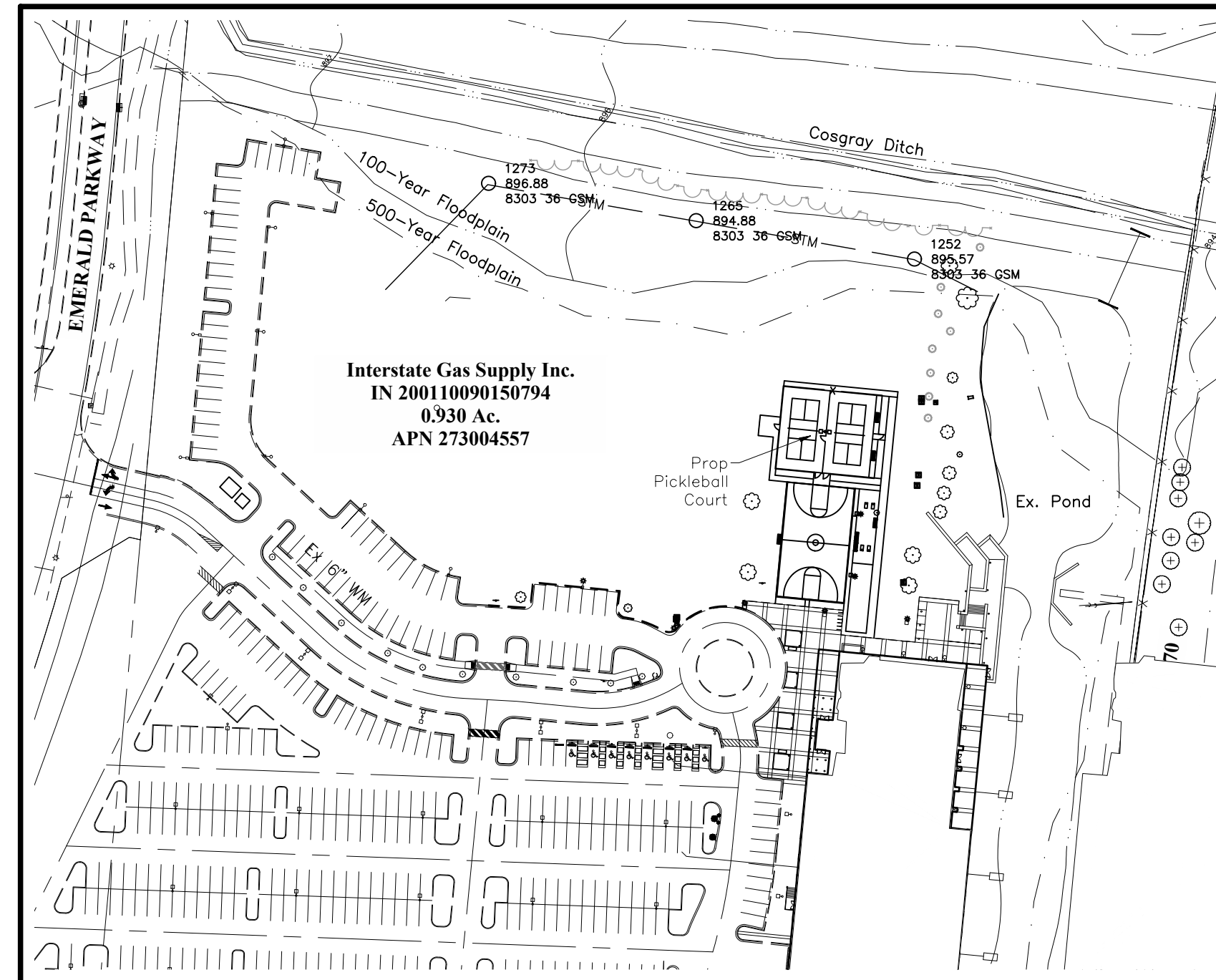
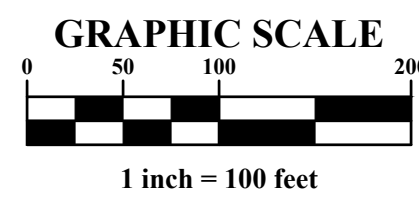


CITY OF DUBLIN, FRANKLIN COUNTY, OHIO
AMENDED FINAL DEVELOPMENT PLAN
 FOR
IGS ENERGY
NEW PICKLEBALL COURT
 6100 EMERALD PARKWAY
 2023



INDEX MAP
 Scale: 1" = 100'

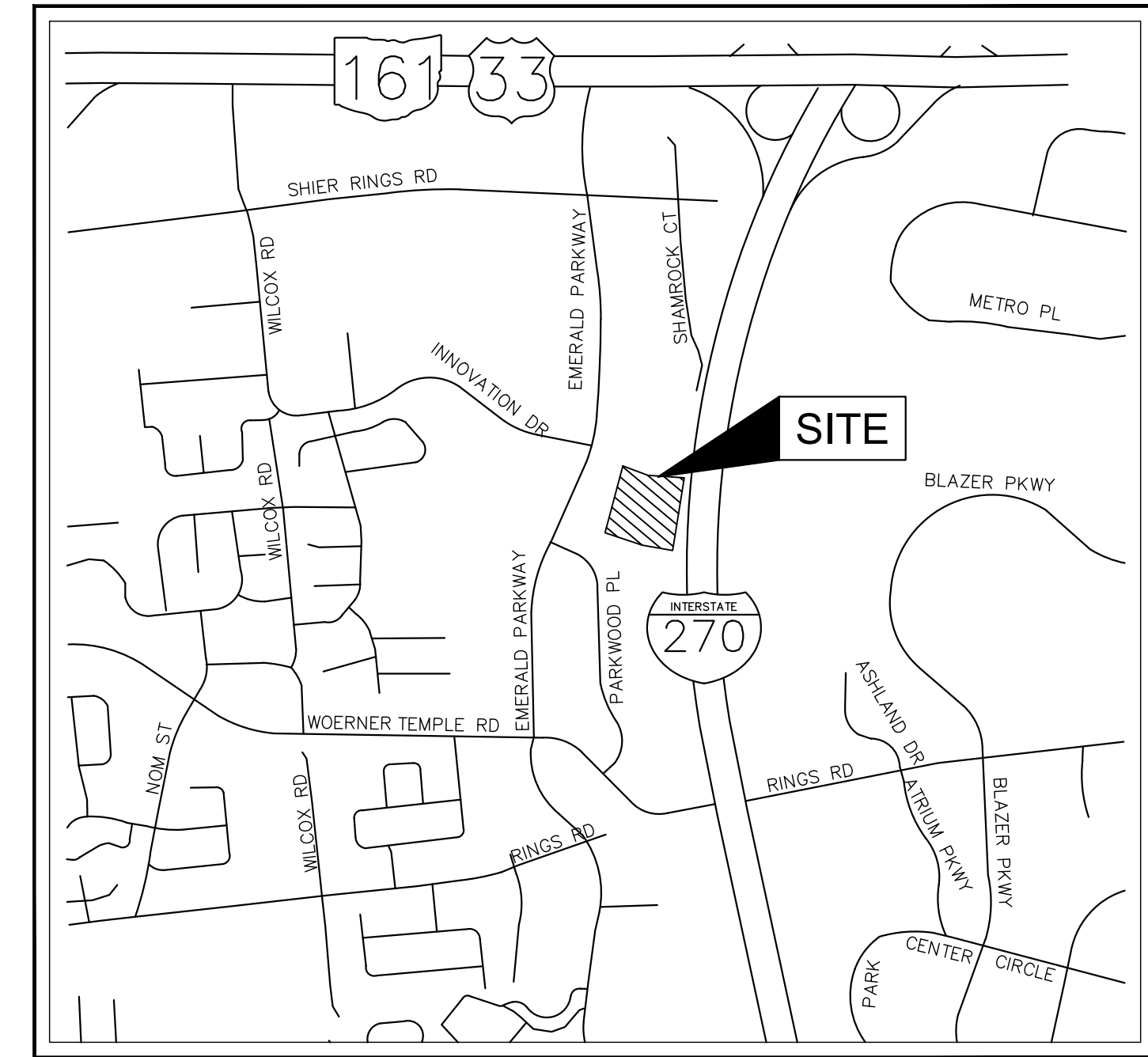


PROJECT DESCRIPTION

This project is a proposal for development on 0.67 acres for a new pickleball court on the existing IGS Headquarter Campus.

ZONING

Zoned Planned
 Unit Development:
 Tuttle North - ISG



VICINITY MAP
 Not to Scale

SHEET INDEX

Title Sheet	C1.00
Existing Conditions	C1.01
Site Plan	C1.02
Grading Plan	C1.03

LANDSCAPE ARCHITECT

OHM Advisors
 580 N. 4th Street #610
 Columbus, Ohio 43215
 Tel: (614) 418-0600
 Fax: (614) 474-1115
 Ashley Efaw
 Ashley.Efaw@ohm-advisors.com

ENGINEER

EMH&T Inc.
 5500 New Albany Road
 Columbus, Ohio 43054
 Tel: (614) 775-4500
 Fax: (614) 775-4800
 Sarah Wilson
 swilson@emht.com

DEVELOPER/OWNER

Interstate Gas Supply Inc.
 6100 Emerald Parkway
 Dublin, OH 43016
 Contact: Anna Sommers
 Tel: (614) 659-5061
 Email: asommers@igsenergy.com

PREPARED BY:



Know what's below.
 Call before you dig.

DUBLIN PROJECT NUMBER: 23-083AFDP

OHM
 ARCHITECTS ENGINEERS PLANNERS
 580 N. Fourth St., Ste 610
 Columbus, Ohio 43215
 P (614) 418-0600
 OHM-ADVISORS.COM

EMH&T
 Evans, Mechwart, Hamilton & Tilton, Inc.
 Engineers • Surveyors • Planners • Scientists
 5500 New Albany Road, Columbus, OH 43054
 Phone: 614.775.4500 Toll Free: 888.775.3648
 emht.com

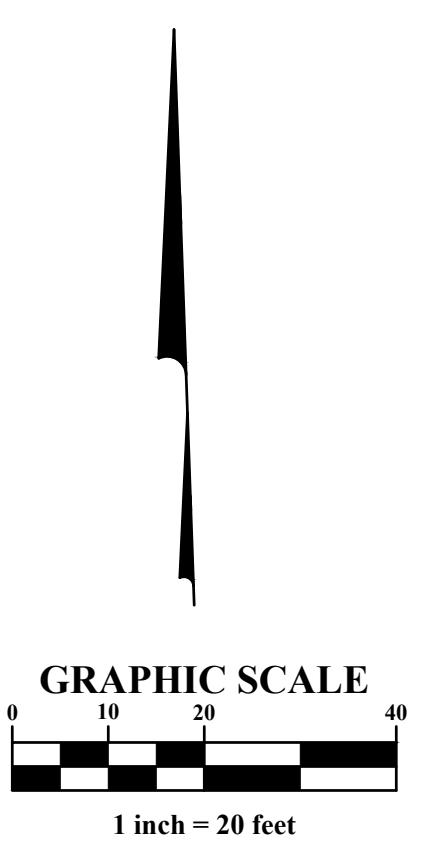
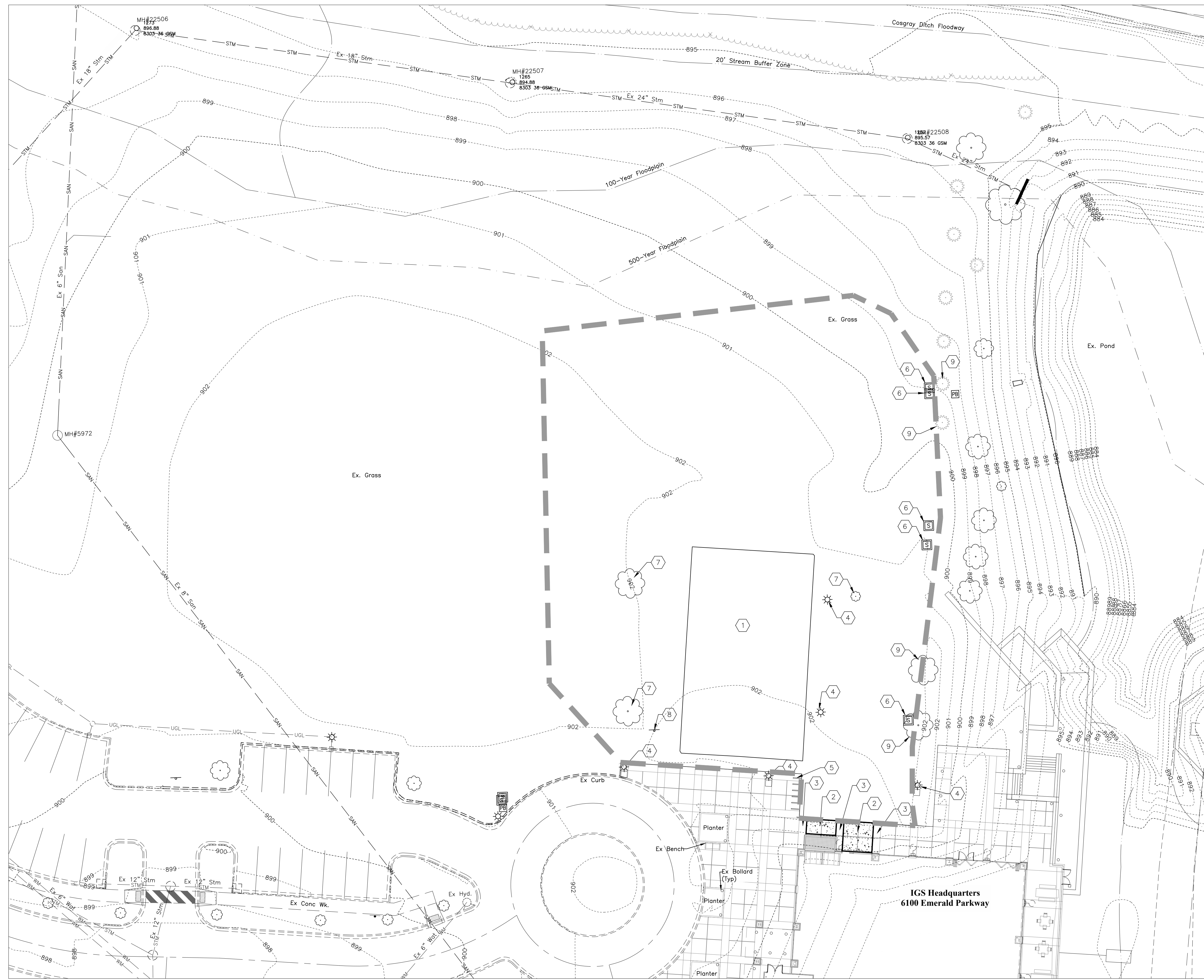
--	--

--	--

DATE	08.05.23	PROJ. NO.	20230567	CADD	JC	COUNTY	FRANKLIN	MUNICIPALITY	DUBLIN
IGS ENERGY NEW PICKLEBALL COURT TITLE SHEET									

SHEET	C1.00
-------	-------

DRAWING PATH: J:\20230567\DWG\05SHEETS\ADP\20230567_EXISTING_CONDITIONS.DWG Aug 11, 2023 - 12:20 PM



- LEGEND**
- STM --- Ex Storm Sewer
 - SAN --- Ex Sanitary Sewer
 - WM --- Ex Water Main
 - UGL --- Ex Lighting
 - Overall Project Limits
 - [Stippled Box] Ex Concrete Pavement/Sidewalk To Be Removed
 - [Solid Grey Box] Ex Pavement To Be Removed

- CODED NOTES**
- ① Do Not Disturb Existing Basketball Court
 - ② Existing Sidewalk To Be Removed
 - ③ Do Not Disturb Existing Pavers
 - ④ Do Not Disturb Existing Light Pole
 - ⑤ Do Not Disturb Existing Bike Rack
 - ⑥ Sprinkler Heads To Be Adjusted To Grade
 - ⑦ Existing Tree To Be Removed
 - ⑧ Existing Sign To Be Removed
 - ⑨ Do Not Disturb Existing Tree



Know what's below.
Call before you dig.

OHM
ARCHITECTS ENGINEERS PLANNERS
580 N. Fourth St., Ste 610
Columbus, Ohio 43215
P (614) 418-0600
OHM-ADVISORS.COM

EMHT
Evans, Mechwart, Hambleton & Tilton, Inc.
Engineers • Surveyors • Planners • Scientists
5500 New Albany Road, Columbus, OH 43054
Phone: 614.775.4500 Toll Free: 888.775.3648
emht.com

--

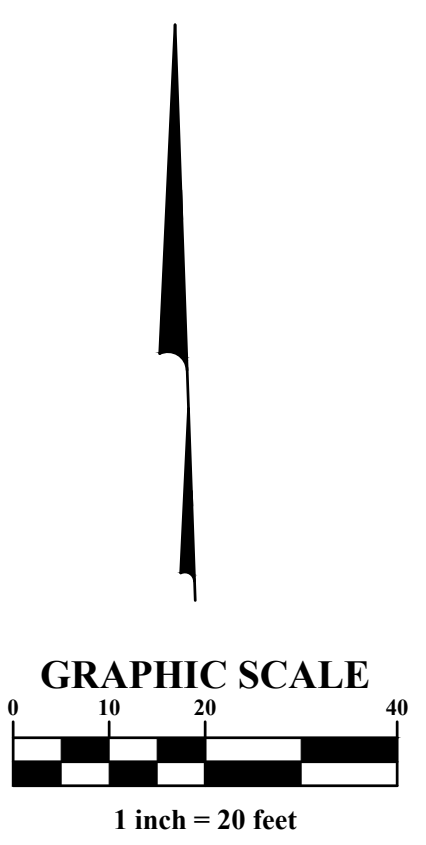
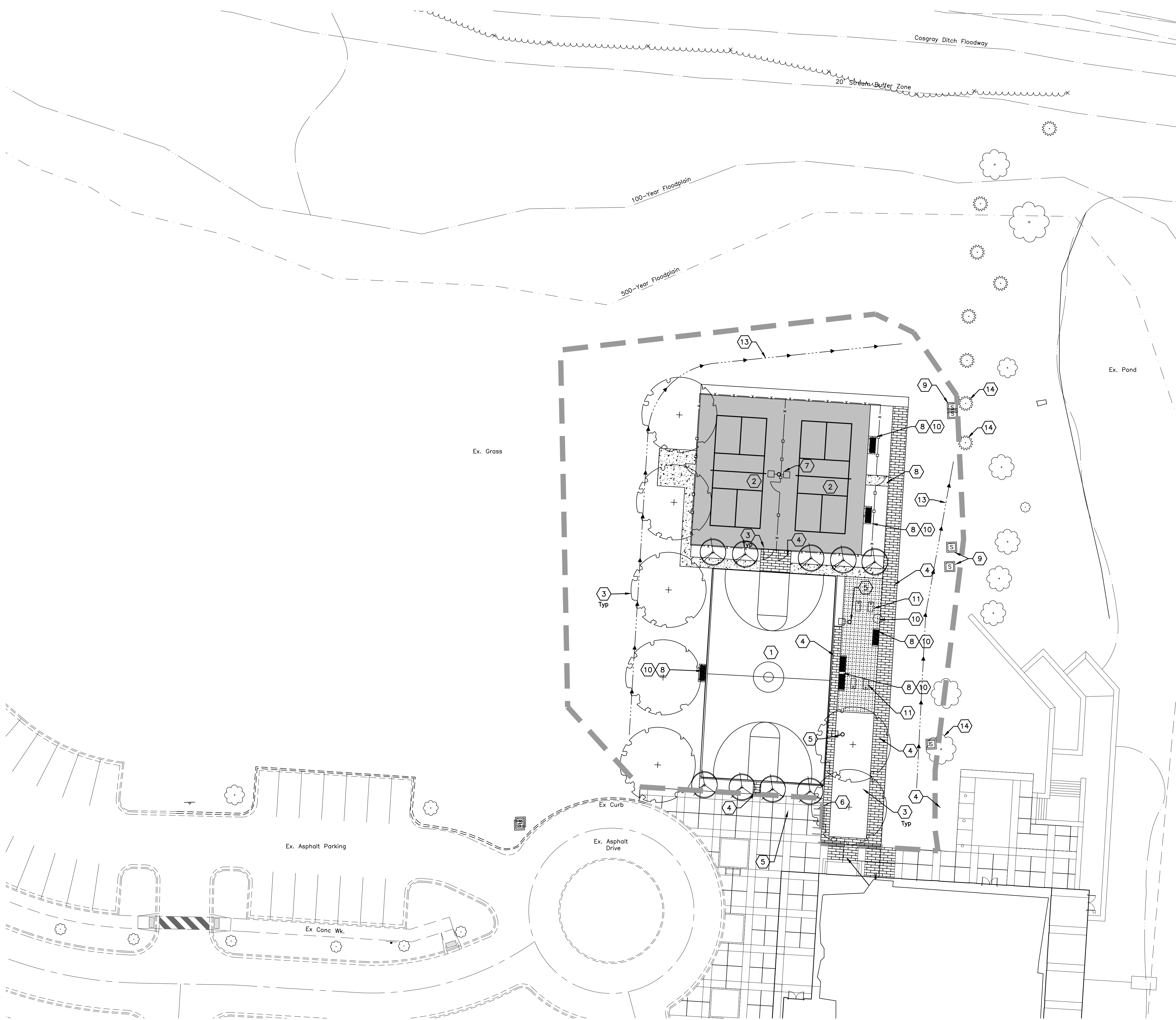
--

DATE	PROJ NUMBER	PROJ MGR	CADD	COUNTY	MUNICIPALITY
08.06.23	20230567	SW	JC	FRANKLIN	DUBLIN
IGS ENERGY NEW PICKLEBALL COURT EXISTING CONDITIONS					

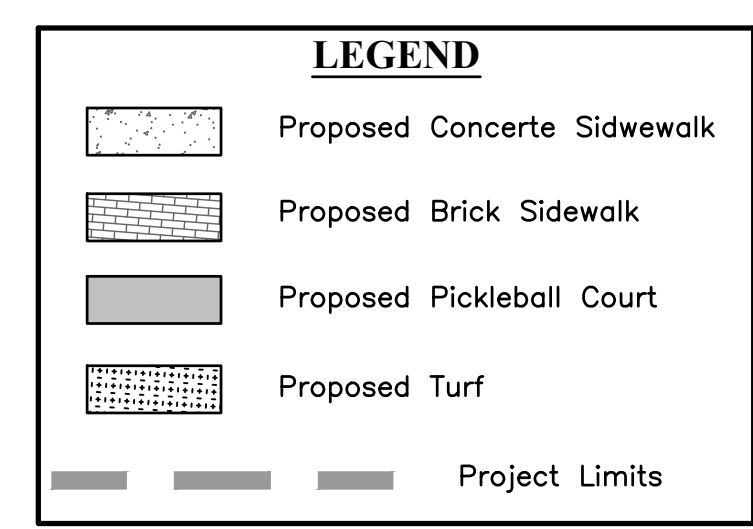
SHEET C1.01

COPYRIGHT © 2023, OHM ALL DRAWINGS AND WRITTEN MATERIALS APPEARING HEREIN CONSTITUTE THE ORIGINAL AND UNPUBLISHED WORK OF OHM AND THE SAME MAY NOT BE DUPLICATED, DISTRIBUTED, OR DISCLOSED WITHOUT PRIOR WRITTEN CONSENT OF OHM

DRAWING PATH: F:\20230567\DWG\SHEETS\ADP\20230567 SITE PLANDWG - Aug 11, 2023 - 12:21 PM



- CODED NOTES**
- 1 Do Not Disturb Existing Basketball Court
 - 2 Proposed Pickleball Courts, See Landscape Plan For Details.
 - 3 Proposed Tree, See Landscape Plan For Details.
 - 4 Proposed Brick Sidewalk, See Landscape Plan For Details.
 - 5 Do Not Disturb Existing Light Pole.
 - 6 Do Not Disturb Existing Bike Racks.
 - 7 Proposed Light Pole.
 - 8 Proposed Concrete Sidewalk, See Landscape Plan For Details.
 - 9 Existing Sprinkler Heads To Be Adjusted To Grade
 - 10 Proposed Bench, See Landscape Plan For Details.
 - 11 Proposed Site Furniture, See Landscape Plan For Details.
 - 12 Proposed Chainlink Fence. See Landscape Plan For Details.
 - 13 Proposed Swale
 - 14 Do Not Disturb Existing Tree



OHM
 ARCHITECTS ENGINEERS PLANNERS
 580 N. Fourth St., Ste 610
 Columbus, Ohio 43215
 P (614) 418-0600
 OHM-ADVISORS.COM

EMH
 Evans, Mechwart, Hambleton & Tilton, Inc.
 Engineers • Surveyors • Planners • Scientists
 5500 New Albany Road, Columbus, OH 43054
 Phone: 614.775.4500 Toll Free: 888.775.3648
 emh.com

ISSUE:	
REVISIONS:	

DATE	PROJ NUMBER	PROJ MGR	CADD	COUNTY	MUNICIPALITY
08.05.23	20230567	SW	JC	FRANKLIN	DUBLIN
ICS ENERGY NEW PICKLEBALL COURT SITE PLAN					

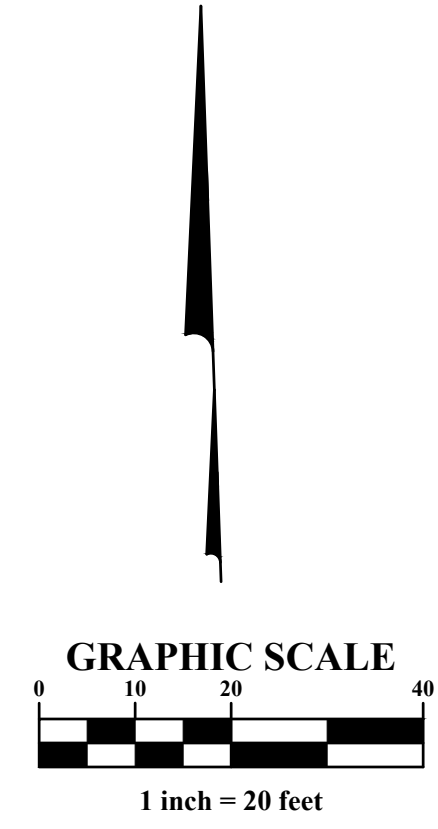
SHEET C1.02



Know what's below.
Call before you dig.

COPYRIGHT © 2023 OHM. ALL DRAWINGS AND WRITTEN MATERIALS APPEARING HEREIN CONSTITUTE THE ORIGINAL AND UNPUBLISHED WORK OF OHM AND THE SAME MAY NOT BE DUPLICATED, DISTRIBUTED, OR DISCLOSED WITHOUT PRIOR WRITTEN CONSENT OF OHM.

DRAWING PATH: F:\20230567\DWG\SHEETS\ADP\20230567 GRADING PLAN.DWG Aug 11, 2023 - 12:42 PM



LEGEND	
x Ex820.00	Ex. Spot Elevation
x 820.00	Prop. Spot Elevation
---	Limit of Disturbance

OHM
 ARCHITECTS ENGINEERS PLANNERS
 580 N. Fourth St., Ste 610
 Columbus, Ohio 43215
 P (614) 418-0600
 OHM-ADVISORS.COM

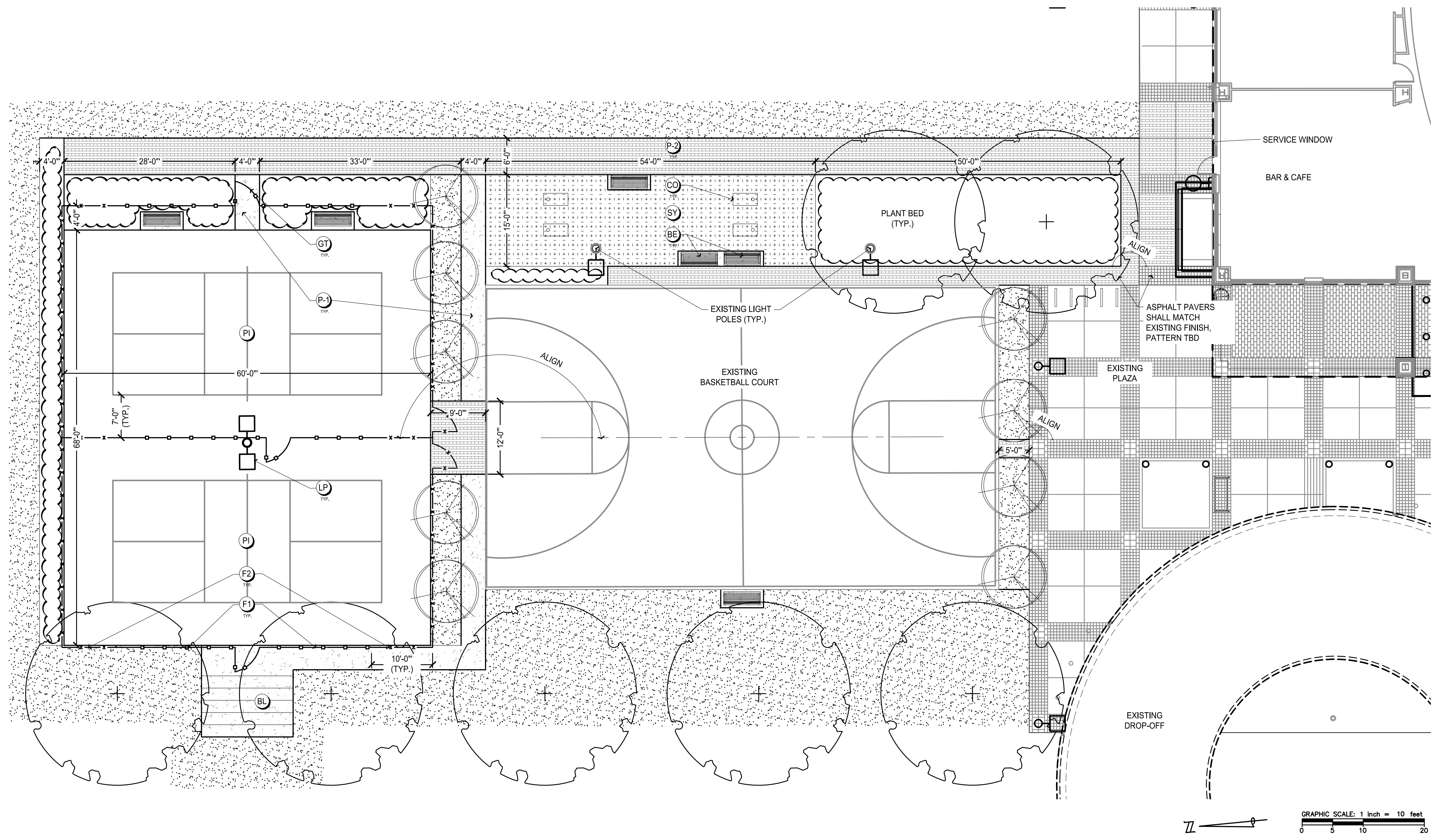
EMH
 Evans, Mechwart, Hambleton & Tilton, Inc.
 Engineers • Surveyors • Planners • Scientists
 5500 New Albany Road, Columbus, OH 43054
 Phone: 614.775.4500 Toll Free: 888.775.3448
 emh.com

DATE	PROJ NUMBER	PROJ MGR	CADD	COUNTY	MUNICIPALITY	ISSUE	REVISIONS
08.05.23	20230567	SW	JC	FRANKLIN	DUBLIN		

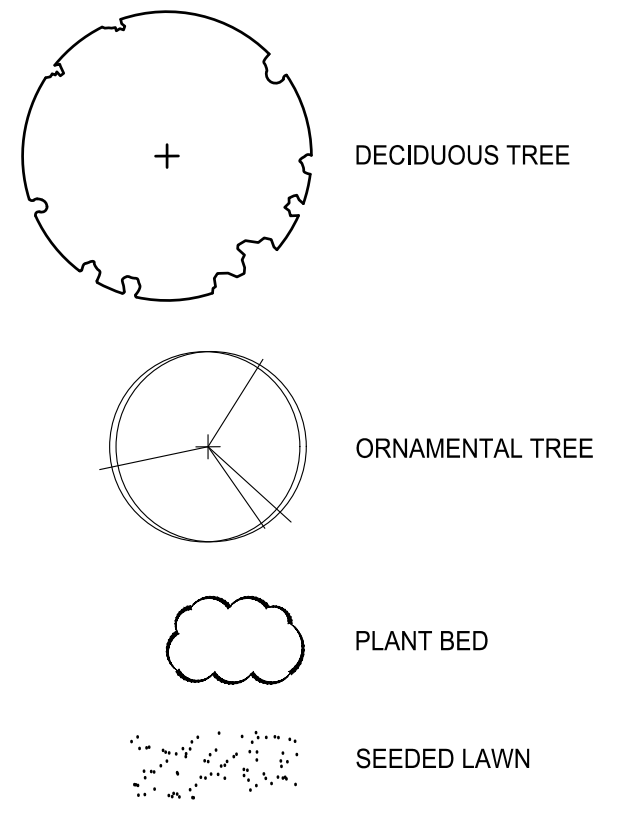
ICS ENERGY
 NEW PICKLEBALL COURT
 GRADING PLAN

SHEET C1.03

Copyright 2023, OHM, ALL DRAWINGS AND WRITTEN MATERIALS APPEARING HEREIN CONSTITUTE THE ORIGINAL AND UNPUBLISHED WORK OF OHM AND THE SAME MAY NOT BE DUPLICATED, DISTRIBUTED, OR DISCLOSED WITHOUT PRIOR WRITTEN CONSENT OF OHM



LAYOUT AND MATERIALS LEGEND:



CODE	ITEM	FINISH	SIZE	NOTES
BE	BENCH	VICTOR STANLEY, RB-28, BLACK, SURFACE-MOUNT	6'-0"	MATCH EXISTING BENCH ON EAST PATIO
BL	PORTABLE 3-ROW BLEACHER	ALUMINUM ATHLETIC EQUIPMENT		
CO	CORNHOLE BOARDS	BRAVADO OUTDOOR PRODUCTS, CONCRETE, BLACK WITH IGS LOGO		SUBMIT SHOP DRAWINGS WITH LOGO
F1	3.5' FENCE	BLACK CHAINLINK, VINYL-COATED, 9-GAUGE, 2" MESH	3'-6" HT	MIN. 42" DEPTH X 12" Ø FOUNDATION. SUBMIT SHOP DRAWINGS FOR APPROVAL.
F2	10' FENCE	BLACK CHAINLINK, VINYL-COATED, 9-GAUGE, 2" MESH	10'-0" HT	MIN. 42" DEPTH X 12" Ø FOUNDATION. SUBMIT SHOP DRAWINGS FOR APPROVAL.
GT	FENCE GATE	SINGLE-LEAF, BLACK CHAINLINK, VINYL-COATED, 9-GAUGE, 2" MESH	4'-0" WIDE	MATCH FENCE HEIGHT PER LOCATION. MIN. 42" DEPTH X 12" Ø FOUNDATION. SUBMIT SHOP DRAWINGS FOR APPROVAL.
LP	LIGHT POLE	GARDCO, GULLWING G-18 FIXTURE, 2-HEAD, DARK BRONZE	18" HT X 5" SQ. POLE	MATCH EXISTING LIGHT POLES. MIN. 5'-0" DEPTH X 2'-0" Ø WITH 2'-6" EXPOSED FOUNDATION. SUBMIT SHOP DRAWINGS FOR APPROVAL.
P-1	CONCRETE WALK	MATCH EXISTING DECORATIVE FINISH		SUBMIT SAMPLES FOR REVIEW
P-2	ASPHALT PAVERS	HANOVER, #55 (RED), GROUND TUDOR FINISH, PATTERN TBD		MATCH EXISTING PAVERS, SUBMIT SAMPLES FOR REVIEW
PI	PICKLEBALL COURT	ASPHALT PAVEMENT, WHITE PAINTED STRIPING, MATCH EXISTING BASKETBALL COURT		BISON PERMANENT RECREATIONAL PICKLEBALL NET SYSTEM, PK05XL, BLUE POSTS. MIN. 42" DEPTH X 24" Ø FOUNDATION. SUBMIT SHOP DRAWINGS FOR APPROVAL.
SY	SYNTHETIC TURF	XGRASS, PROLAWN		

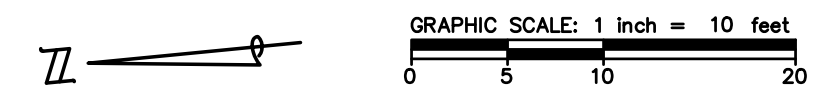
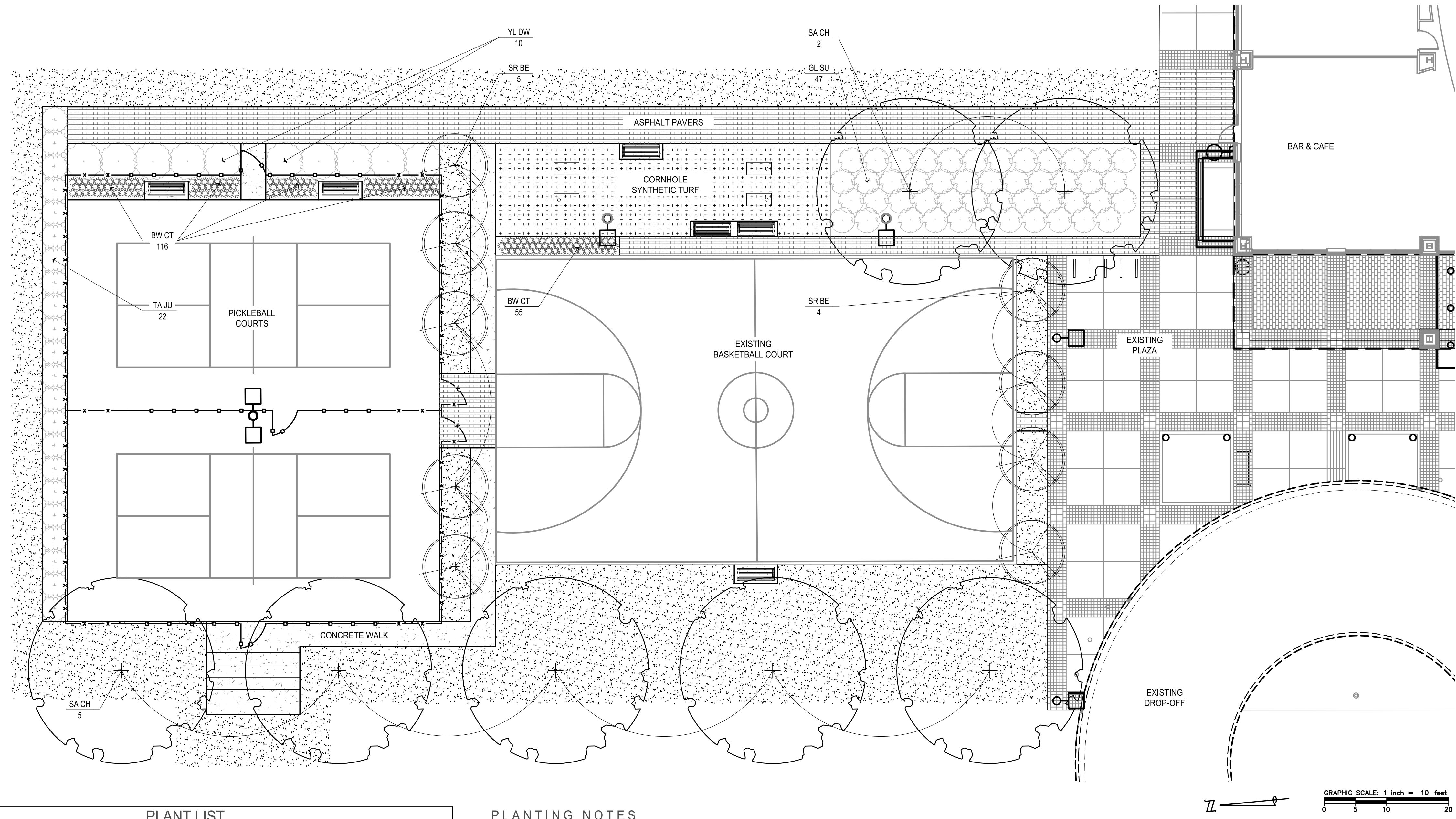
LAYOUT AND MATERIALS NOTES:

- ALL CONCRETE UTILIZED ON THIS PROJECT SHALL BE CLASS MS (MEDIUM-SET) CONCRETE
- ALL DIMENSIONS SHOWN ARE IN FEET AND INCHES UNLESS OTHERWISE NOTED.
- DO NOT SCALE DRAWINGS. UTILIZE DIMENSIONS INDICATED ON THE PLANS.
- ALL DIMENSIONS ARE TO THE EDGE OF PAVEMENT, FACE OF WALL, OR FACE OF CURB UNLESS OTHERWISE NOTED.
- UNLESS INDICATED OTHERWISE, ALL WALKWAYS ABUT AT 90 DEGREE ANGLES.
- ALL CONCRETE SCORING SHALL BE PARALLEL, PERPENDICULAR OR TANGENT TO ADJACENT IMPROVEMENTS UNLESS OTHERWISE NOTED.
- LAYOUT ALL CONSTRUCTION LINES AND VERIFY LAYOUT WITH THE OWNER'S REPRESENTATIVE PRIOR TO BEGINNING ANY CONSTRUCTION WORK.
- PROVIDE ISOLATION JOINTS WHERE CONCRETE PAVING OR PAVING BASE MEETS A FIXED STRUCTURE OR EXISTING PAVEMENT.
- PROVIDE FLUSH CONDITIONS AT JUNCTURE OF ALL WALKWAYS AND DOOR THRESHOLDS.
- REFER TO GENERAL NOTES FOR ADDITIONAL INSTRUCTIONS.



DRAWING PATH: P:\6101_6500\616220010_IGS_Energy_Design_Study_Drawings\PLN_ID_Sheets\22010_L1T.dwg Aug 10, 2023 - 1:00pm

COPYRIGHT 2022 OHM ALL DRAWINGS AND WRITTEN MATERIALS APPEARING HEREIN CONSTITUTE THE ORIGINAL AND UNPUBLISHED WORK OF OHM AND THE SAME MAY NOT BE DUPLICATED, DISTRIBUTED, OR DISCLOSED WITHOUT PRIOR WRITTEN CONSENT OF OHM



PLANT LIST						
CODE	COMMON NAME	LATIN NAME	SIZE	COND.	SPACING	QTY.
SA CH	SARGENT CHERRY	<i>Prunus sargentii</i> 'Columnaris'	2 1/2" CAL.	B&B	PER PLAN	7
SR BE	SERVICEBERRY	<i>Amelachier arborea</i>	6' HT.	CONT.	PER PLAN	9
TA JU	TAYLOR JUNIPER	<i>Juniperus virginiana</i> 'Taylor'	6' HT.	CONT.	PER PLAN	22
GL SU	GRO-LOW FRAGRANT SUMAC	<i>Rhus aromatica</i> 'Gro-Low'	12" HT.	CONT.	PER PLAN	47
YL DW	BUD'S YELLOW TWIG DOGWOOD	<i>Cornus alba</i> 'Bud's Yellow'	24" HT.	CONT.	PER PLAN	10
BW CT	BLUE WONDER CATMINT	<i>Nepeta x faassenii</i> 'Blue Wonder'	8" HT.	CONT.	PER PLAN	171

PLANTING NOTES

- ALL PLANT MATERIAL SHALL BE INSTALLED BY QUALIFIED LANDSCAPE INSTALLER WHOSE WORK HAS RESULTED IN SUCCESSFUL ESTABLISHMENT OF PLANTS, FIVE YEARS' EXPERIENCE IN LANDSCAPE MINIMUM.
- THE CONTRACTOR SHALL VERIFY UTILITY CLEARANCES THROUGH MISS DIG PRIOR TO DETERMINING FINAL LOCATIONS FOR ALL STREETSCAPE FEATURES, INCLUDING ALL PLANTINGS. ANY FIELD ADJUSTMENTS TO FINAL PLANTING LOCATIONS SHALL BE AS DIRECTED BY THE CITY.
- STAKE ALL BED LINES AND TREE LOCATIONS FOR THE OWNER'S REVIEW PRIOR TO INSTALLATION. ALL PLANTING PROCEDURES ARE SUBJECT TO THE REVIEW OF THE OWNER AND THE CONTRACTOR SHALL CORRECT ANY DEFICIENCIES FOUND AT NO ADDITIONAL COST TO THE OWNER.
- SECURE PLANT MATERIAL AS SPECIFIED ON PLANS. IN THE EVENT THAT PLANT MATERIALS SPECIFIED ARE NOT AVAILABLE, CONTACT LANDSCAPE ARCHITECT FOR APPROVED SUBSTITUTIONS. NO SUBSTITUTIONS FOR PLANT MATERIALS WILL BE ALLOWED WITHOUT PRIOR WRITTEN APPROVAL BY THE LANDSCAPE ARCHITECT.
- VERIFY THAT ALL PLANTING PRODUCTS, PLANT MATERIAL, AND PLANT QUANTITIES DELIVERED TO THE SITE MATCH WHAT IS INDICATED ON THE PLANS AND SPECIFICATIONS.
- PROTECT ALL PLANT MATERIAL DURING DELIVERY TO PREVENT DAMAGE TO ROOT BALLS, TRUNKS, BRANCHES AND THE DESICCATION OF LEAVES. PROTECT ALL PLANT MATERIAL DURING SHIPPING WITH SHADE CLOTH OR SHIP WITH ENCLOSED TRANSPORT. MAINTAIN PROTECTIONS AND HEALTH OF PLANT MATERIAL STORED ON SITE. HANDLE ALL TREES WITH NYLON STRAPS. NO CHAINS OR CABLES WILL BE ALLOWED. REMOVE UNACCEPTABLE PLANT MATERIAL IMMEDIATELY FROM THE SITE.
- ALL PLANT MATERIAL SHALL BE NURSERY GROWN, WELL FORMED, TRUE TO SPECIES, HARDENED OFF WITH VIGOROUS ROOT SYSTEMS, FULL CROWN AND CANOPIES, AND FREE FROM DISEASE, PESTS AND INSECTS, AND DEFECTS SUCH AS KNOTS, SUN SCALD, WINDBURN, LEAF DIS-COLORATION, IRREGULAR BRANCHING OR INJURIES.
- ALL ROOT BALLS SHALL CONFORM TO THE SIZE STANDARDS SET FORTH IN 'AMERICAN STANDARDS FOR NURSERY STOCK'.
- ALL PLANT MATERIAL DELIVERED TO THE SITE IS SUBJECT TO THE REVIEW OF THE OWNER BEFORE, DURING AND AFTER INSTALLATION.
- PROVIDE PLANT PHOTOGRAPHS OF EACH PLANT SPECIFIED TO THE LANDSCAPE ARCHITECT FOR COMPLIANCE REVIEW PRIOR TO SHIPPING.
- TEST FILL ALL TREE AND PLANTING PITS WITH WATER, PRIOR TO PLANTING, TO ASSURE PROPER SOIL PERCOLATION. PITS WHICH DO NOT ADEQUATELY DRAIN SHALL BE FURTHER EXCAVATED TO A DEPTH SUFFICIENT FOR DRAINAGE TO OCCUR AND/OR BACKFILLED WITH SUITABLE DRAINAGE GRAVEL. NO ALLOWANCES SHALL BE MADE FOR PLANT MATERIAL LOSS DUE TO IMPROPER DRAINAGE. CONTRACTOR SHALL REPLACE LOST PLANT MATERIAL WITH SAME SIZE AND SPECIES AT NO ADDITIONAL COST TO CITY.
- ALL PLANT MATERIALS, INCLUDING RELOCATED PLANT MATERIAL, SHALL BE PLANTED IN A PROFESSIONAL MANNER TYPICAL TO THE INDUSTRY STANDARDS TO ASSURE COMPLETE SURVIVABILITY OF ALL INSTALLED PLANT MATERIALS AS WELL AS TO PROVIDE AN AESTHETICALLY APPROVED PROJECT. CONTRACTOR SHALL REFER TO THE PLANTING DETAILS FOR MINIMUM SIZE AND WIDTH OF PLANTING PITS AND BEDS, GUYING AND STAKING, MULCHING, AND OTHER PLANTING REQUIREMENTS.
- PLANTING BEDS SHALL HAVE A MINIMUM OF 3" MULCH DEPTH.
- ALL PLANTING AREAS SHALL BE WEED FREE PRIOR TO PLANTING INSTALLATION.
- REMOVE ALL PLANTING AND LANDSCAPE DEBRIS FROM THE PROJECT SITE AND SWEEP AND WASH CLEAN ALL PAVED AND FINISHED SURFACES AFFECTED BY THE LANDSCAPE INSTALLATION.
- REFER TO GENERAL NOTES FOR ADDITIONAL INSTRUCTIONS.



Know what's below.
Call before you dig.

ISSUE: AFPP	REVISIONS:	###	###	###	###	###	###	
DATE:	PROJ NUMBER:	6/16/2020	PROJ MSR:	GS	CADD:	AE	COUNTY:	FRANKLIN
MUNICIPALITY:	###							
IGS ENERGY EMPLOYEE AMENITY SPACES - PHASE 1 PLANTING PLAN								

DRAWING PATH: P:\6101_6500\65722010_IGS_Energy_Design_Study\Drawings\PLN_ID\Sheets\22010_L1T.dwg Aug 10, 2023 - 1:00pm

COPYRIGHT 2022 OHM ALL DRAWINGS AND WRITTEN MATERIALS APPEARING HEREIN CONSTITUTE THE ORIGINAL AND UNPUBLISHED WORK OF OHM AND THE SAME MAY NOT BE DUPLICATED, DISTRIBUTED, OR DISCLOSED WITHOUT PRIOR WRITTEN CONSENT OF OHM



MATCH EXISTING LIGHT POLES

PICKLE BALL COURTS SHALL MATCH EXISTING BASKETBALL ASPHALT & PAINTED STRIPING

MATCH EXISTING CONCRETE PAVEMENT

MATCH EXISTING ASPHALT PAVERS

PROPOSED PAVEMENT & LIGHT POLES



PICKLEBALL NET SYSTEM (PI) - BISON PERMANENT RECREATIONAL PICKLEBALL NET SYSTEM, BLUE POST FINISH



BENCH (BE) - VICTOR STANLEY, MATCH EXISTING EAST PATIO



SYNTHETIC TURF (SY) - XGRASS, PROLAWN



CORNHOLE BOARDS (CO) - BRAVADO CONCRETE BOARDS WITH IGS LOGO



PORTABLE 3-ROW BLEACHER (BL) - ALUMINUM ATHLETIC EQUIPMENT



Know what's below.
Call before you dig.

ISSUE:	AFPP
REVISIONS:	###

DATE:	07/25/23
PROJ NUMBER:	616720010
PROJ MSR:	GS
CADD:	AE
COUNTY:	FRANKLIN
MUNICIPALITY:	###

IGS ENERGY
EMPLOYEE AMENITY SPACES - PHASE 1
SITE MATERIALS

DATE:	07/25/23
PROJ NUMBER:	616720010
PROJ MSR:	GS
CADD:	AE
COUNTY:	FRANKLIN
MUNICIPALITY:	###

SHEET	L1.03
-------	-------

COPYRIGHT 2022 OHM ALL DRAWINGS AND WRITTEN MATERIALS APPEARING HEREIN CONSTITUTE THE ORIGINAL AND UNPUBLISHED WORK OF OHM AND THE SAME MAY NOT BE DUPLICATED, DISTRIBUTED, OR DISCLOSED WITHOUT PRIOR WRITTEN CONSENT OF OHM

DRAWING PATH: P:\6101_65006\6720010_IGS_Energy_Design_Study_Drawings\PI\JD\Sheets\22010_L1T.dwg Aug 10, 2023 - 1:00pm



SARGENT CHERRY
Prunus sargentii 'Columnaris'



SERVICEBERRY
Amelachier arborea



TAYLOR JUNIPER
Juniperus virginiana 'Taylor'



GRO-LOW FRAGRANT SUMAC
Rhus aromatica 'Gro-Low'



BUD'S YELLOW TWIG DOGWOOD
Cornus alba 'Bud's Yellow'



BLUE WONDER CATMINT
Nepeta x faassenii 'Blue Wonder'



ARCHITECTS ENGINEERS PLANNERS

580 N Fourth St., Ste 610
Columbus, OH 43215
P (614) 418-0600 | F (614) 418-0614

OHM-ADVISORS.COM

ISSUE: AFPP

REVISIONS:

###

###

###

###

###

###

DATE: 07/25/23

PROJ NUMBER: 616722010

MUNICIPALITY: ####

COUNTY: FRANKLIN

CAAD: AE

PROJ MSR: GS

IGS ENERGY

EMPLOYEE AMENITY SPACES - PHASE 1

PLANT PALETTE



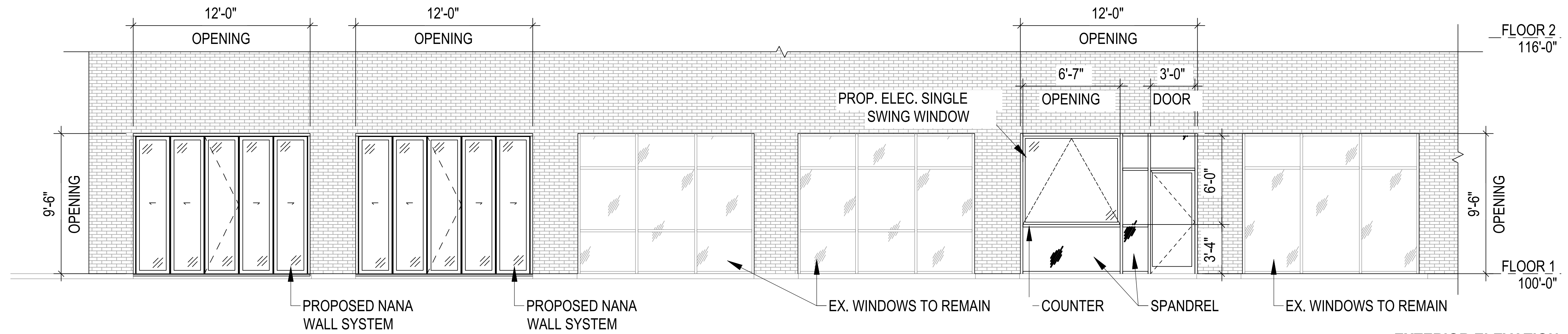
Know what's below.
Call before you dig.

SHEET: L1.04

COPYRIGHT 2022 OHM ALL DRAWINGS AND WRITTEN MATERIALS APPEARING HEREIN CONSTITUTE THE ORIGINAL AND UNPUBLISHED WORK OF OHM AND THE SAME MAY NOT BE DUPLICATED, DISTRIBUTED, OR DISCLOSED WITHOUT PRIOR WRITTEN CONSENT OF OHM

DRAWING PATH: P:\6101_6500\616722010_GS_Energy_Design_Study_Drawings\PLN_UID\Sheets\22010_L1T.dwg Aug 10, 2023 - 1:00pm

DRAWING PATH: P:\01_65016\6722010_IGS_Energy_Design_Study_Drawings\PLN_LID_Sheets\6722010_A_IGS_NRGDS_2023_CEN_Elevation - 1 - 6.dwg Aug 10, 2023 2:39pm



EXTERIOR ELEVATION
 GRAPHIC SCALE: 1/4" inch = 1'-0"
 0 1 2 4 8

OHM
 ARCHITECTS ENGINEERS PLANNERS
 580 N Fourth St., Ste 610
 Columbus, OH 43215
 P (614) 418-0600 | F (614) 418-0614
 OHM-ADVISORS.COM



**REFERENCE IMAGES FOR
 NANAWALL NW640 SYSTEM**



**REFERENCE IMAGES FOR
 CROWN 50/50 HYDRAULIC SINGLE SWING WINDOW**

ISSUE / REVISIONS	DATE	PROJECT NUMBER	PROJECT NAME	CADD	COUNTY	MUNICIPALITY
	07.25.23	618722010	IGS ENERGY EMPLOYEE AMENITY SPACES - PHASE 1	AE	FRANKLIN	###

**IGS ENERGY
 EMPLOYEE AMENITY SPACES - PHASE 1
 EXTERIOR ELEVATION**

SHEET: **A1.01**

COPYRIGHT 2022 OHM. ALL DRAWINGS AND WRITTEN MATERIALS APPEARING HEREIN CONSTITUTE THE ORIGINAL AND UNPUBLISHED WORK OF OHM AND THE SAME MAY NOT BE DUPLICATED, DISTRIBUTED, OR DISCLOSED WITHOUT PRIOR WRITTEN CONSENT OF OHM.