

## EX H.2 - Open Space Enlargement North

### DEVELOPMENT DATA

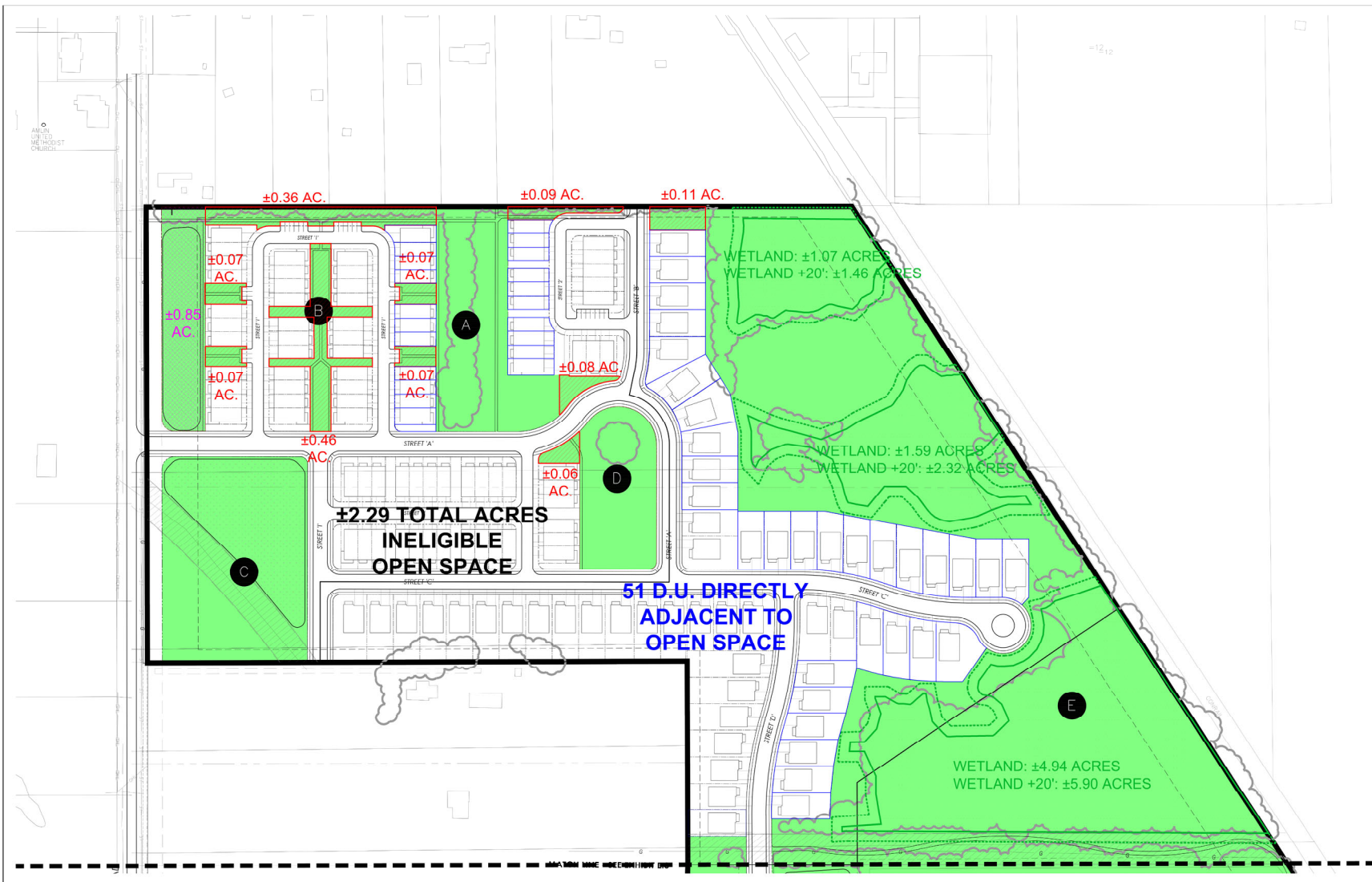
Gross Area: +/-  
 Open Space Requirement per Section 152.086 & 152.087  
 Open Space Required per Resolution 27-04 Conservation Design Resolution  
 Proposed Land Dedication  
 Open Space  
 Future Tuttle Crossing Blvd. R/W

### LEGEND

- Open Space Reserve Area  
 - Includes:  
 Open Green Spaces  
 Ponds and Basins  
 Existing Tree Stands  
 Existing Wetlands  
 Existing Utility Easements
- Future Tuttle Crossing Open Space Area

### LAND DEDICATION/ MAINTENANCE

Name	Area (AC)	Ownership	Maintenance
A	3.35	City of Dublin	HOA
B	0.46	City of Dublin	HOA
C	2.65	City of Dublin	HOA
D	1.12	City of Dublin	HOA
E	23.85	City of Dublin	City of Dublin
F	2.81	City of Dublin	HOA
G	2.98	City of Dublin	HOA
H	1.41	City of Dublin	HOA
I	1.65	City of Dublin	HOA
J	0.56	City of Dublin	HOA
K	0.32	City of Dublin	HOA
L	0.55	City of Dublin	HOA
M	0.18	City of Dublin	HOA
N	5.00	City of Dublin	HOA
SUBTOTAL	46.89		
O	1.97	City of Dublin	HOA
P	2.39	City of Dublin	HOA
SUBTOTAL	4.36		
<b>TOTAL</b>	<b>51.25</b>		



PRELIMINARY DEVELOPMENT PLAN  
**AMLIN CROSSING**  
 Dublin, OH  
 August 4, 2023



## EX H.3 - Open Space Enlargement South

### DEVELOPMENT DATA

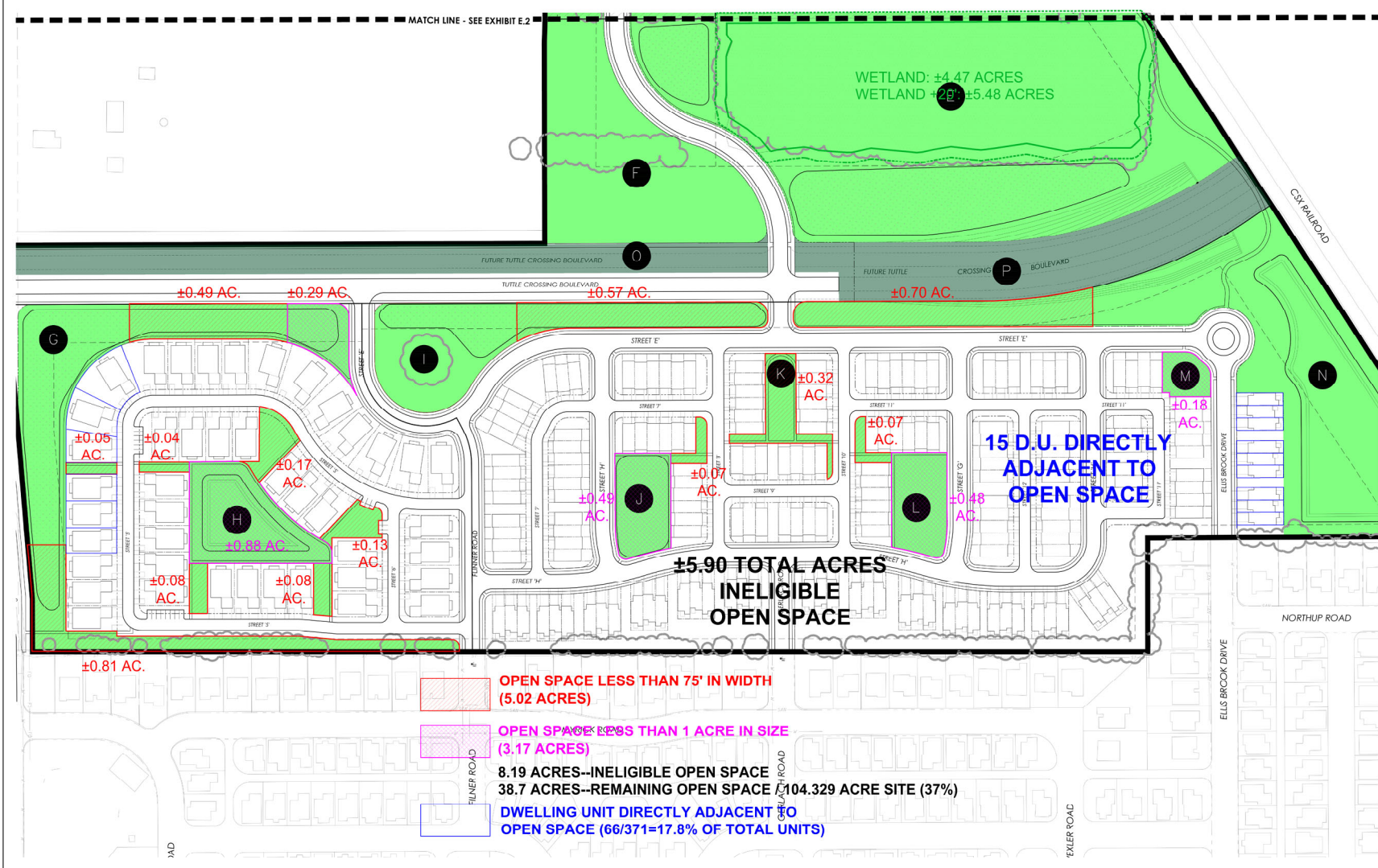
Gross Area: +/-  
 Open Space Requirement per Section 152.086 & 152.087  
 Open Space Required per Resolution 27-04 Conservation Design Resolution  
 Proposed Land Dedication  
 Open Space  
 Future Tuttle Crossing Blvd. R/W

### LEGEND

- Open Space Reserve Area  
 - Includes:  
 Open Green Spaces  
 Ponds and Basins  
 Existing Tree Stands  
 Existing Wetlands  
 Existing Utility Easements
- Future Tuttle Crossing Open Space Area

### LAND DEDICATION/ MAINTENANCE

Name	Area (AC)	Ownership	Maintenance
A	3.35	City of Dublin	HOA
B	0.46	City of Dublin	HOA
C	2.65	City of Dublin	HOA
D	1.12	City of Dublin	HOA
E	23.85	City of Dublin	City of Dublin
F	2.81	City of Dublin	HOA
G	2.98	City of Dublin	HOA
H	1.41	City of Dublin	HOA
I	1.65	City of Dublin	HOA
J	0.56	City of Dublin	HOA
K	0.32	City of Dublin	HOA
L	0.55	City of Dublin	HOA
M	0.18	City of Dublin	HOA
N	5.00	City of Dublin	HOA
SUBTOTAL	46.89		
O	1.97	City of Dublin	HOA
P	2.39	City of Dublin	HOA
SUBTOTAL	4.36		
<b>TOTAL</b>	<b>51.25</b>		



PRELIMINARY DEVELOPMENT PLAN  
**AMLIN CROSSING**  
 Dublin, OH  
 August 4, 2023



## Amlin Crossing Rezoning/Preliminary Development Plan --Open Space Analysis (Conservation Design Resolution)

Prepared for City of Dublin--Division of Planning  
 August 23, 2023

**landplan studios**  
 PLANNING - LANDSCAPE ARCHITECTURE - URBAN DESIGN  
 Daniel Phillabaum, AICP, RIA  
 Owner  
 office: 614.567.2000  
 mobile: 614.327.5524  
 e-mail: dan@landplanstudios.com  
 www.landplanstudios.com