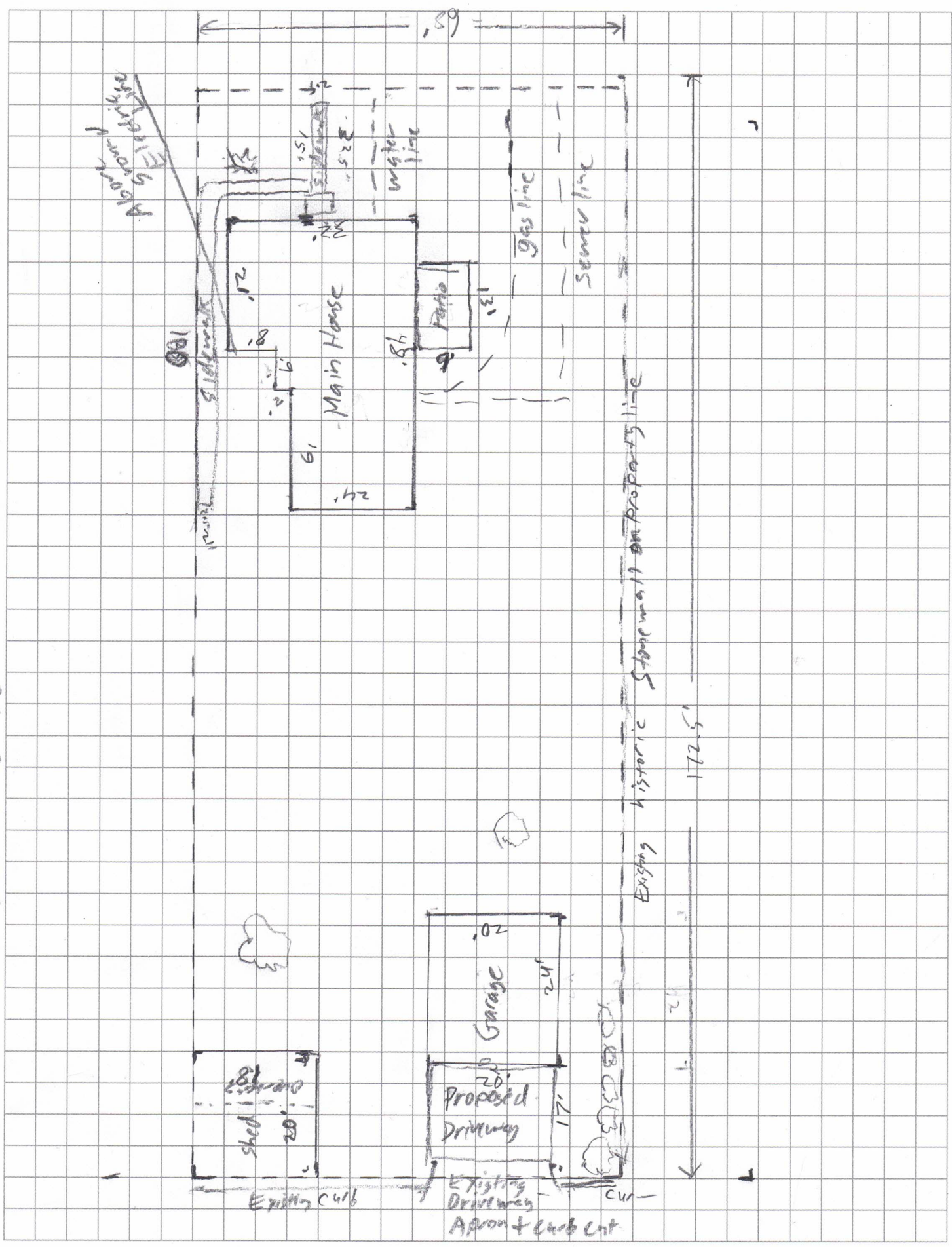
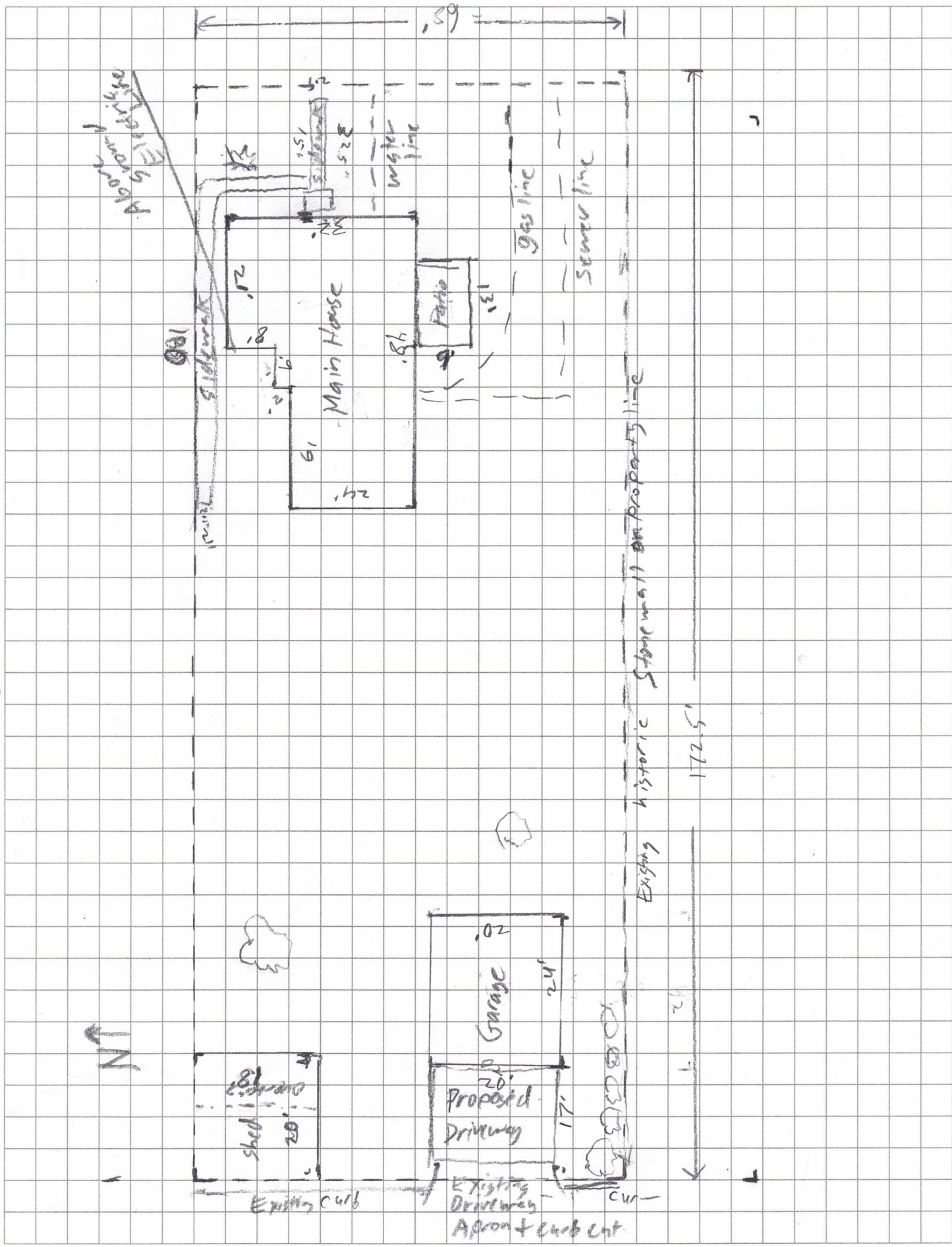


Scale Drawing Lot Plan and Utility Plan 23 South River view Street



Scale Drawing Lot Plan and Utility Plan 23 South River View Street



Scale: 1 square = 5 feet.

Lot Coverage Calculation

Lot Area: 11730 sq ft

Current impermeable surface coverage: 2449.5 sq ft

Current percent coverage: 20.9%

Proposed impermeable surface cover with concrete driveway: 2789.5 sq ft

Proposed percent coverage: 23.8%

Allowable percent coverage: 45% (Zoned Historic Residential)

Additional information: Building dimensions of the garage were requested. The exterior dimensions are 20x24 feet (noted on the lot plan sheet). The building height is 14.5 ft.



Materials specification sheet:

Garage Door:

Manufacturer: Clopay

Model: Gallery Collection 16 ft.x7 ft. 18.4 R-Value Intellicore Insulated Garage Door with SQ24 Windows (see additional sheet for image)

Material: 3 layer construction. Steel on inside and outside with reinforced insulation core 1 7/8" thick.

Color: Sandstone

Siding:

Manufacturer: Reliablit Sawmills (sold by Lowes)

Material: Unfinished pine (to be painted with antique white latex paint)

Style: WP4 tongue and groove 1x8x12 foot boards (see additional sheet for image). Identical to the existing siding on the garage gables.

Driveway:

Material: Concrete 4 inches thick with welded wire mesh over compacted crushed gravel base.

Finish: Typical broom finished concrete

Paint for siding:

Manufacturer: Behr

Paint type: Marquis Exterior Latex Satin

Color: Antique white (color 9850)-identical color to existing siding paint currently on garage.

RELIABILT 7.125-in x 12-ft Unfinished Pine Tongue and Groove Wall Plank

Item #183094 | Model #095043124189

Shop RELIABILT

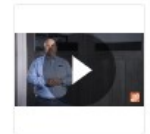
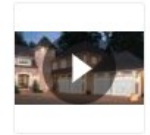
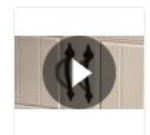
★★★★☆

41



Clopay
Gallery Collection 16 ft. x 7 ft. 18.4 R-Value Intellicore Insulated Sandtone Garage Door with SQ24 Window

★★★★★ (135) Questions & Answers (55)



Hover Image to Zoom

\$4188⁰⁰ Limit 60 per order

 **\$349.00** /mo† suggested payments with 12 months† financing [Apply Now](#) ⓘ

- Integrated locking system for added security
- Deep panel edging improves appearance close-up and from the curb
- Can be painted to complement your home's exterior
- [View More Details](#)

Garage Door Color: **Sandtone**



Garage Door Size: **16 ft x 7 ft**



Insulation R-Value: **18.4**



Unavailable at
Centerville, OH

Delivering to 45459

Pickup

Unavailable

Delivery

Jan 29 - Feb 27

500 available

FREE

[Delivery Details](#)