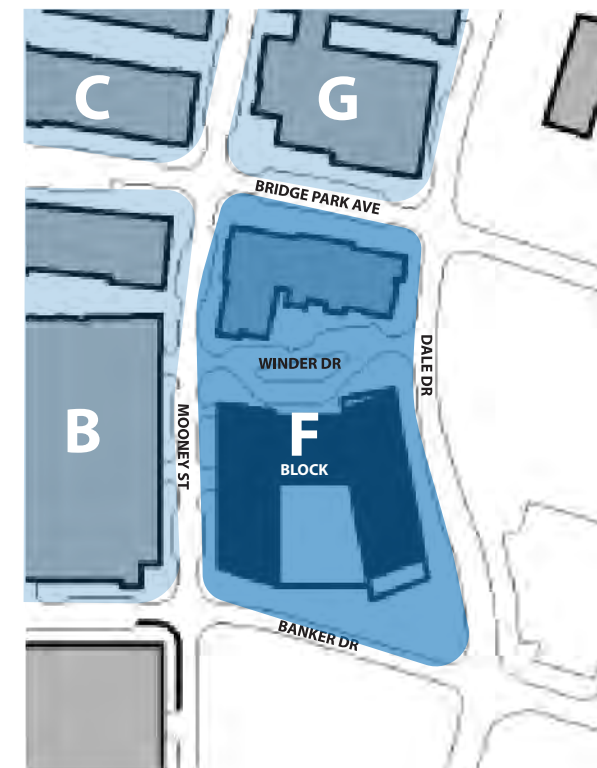
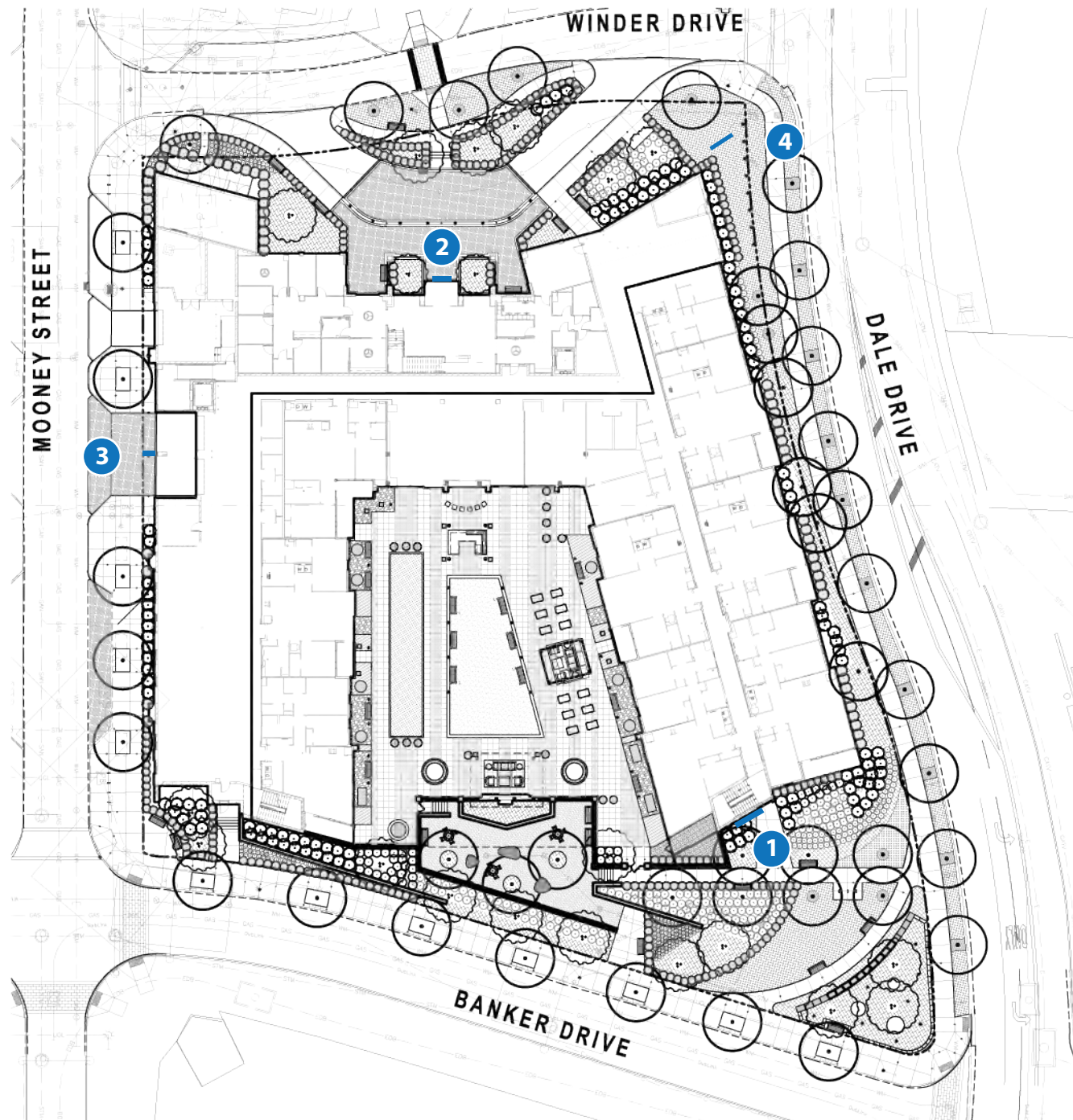


# F Block - The Bailey

## Exterior Signage Key



Elevations  
pages 2-4, 10

Renderings  
pages 5-9

- 1** South Fascia Sign  
pages 11-13  
32' set back
- 2** North Canopy Sign  
pages 14-16  
30' set back
- 3** Blade Sign  
pages 17-22  
15' set back
- 4** Ground Sign  
pages 23-21  
27' set back



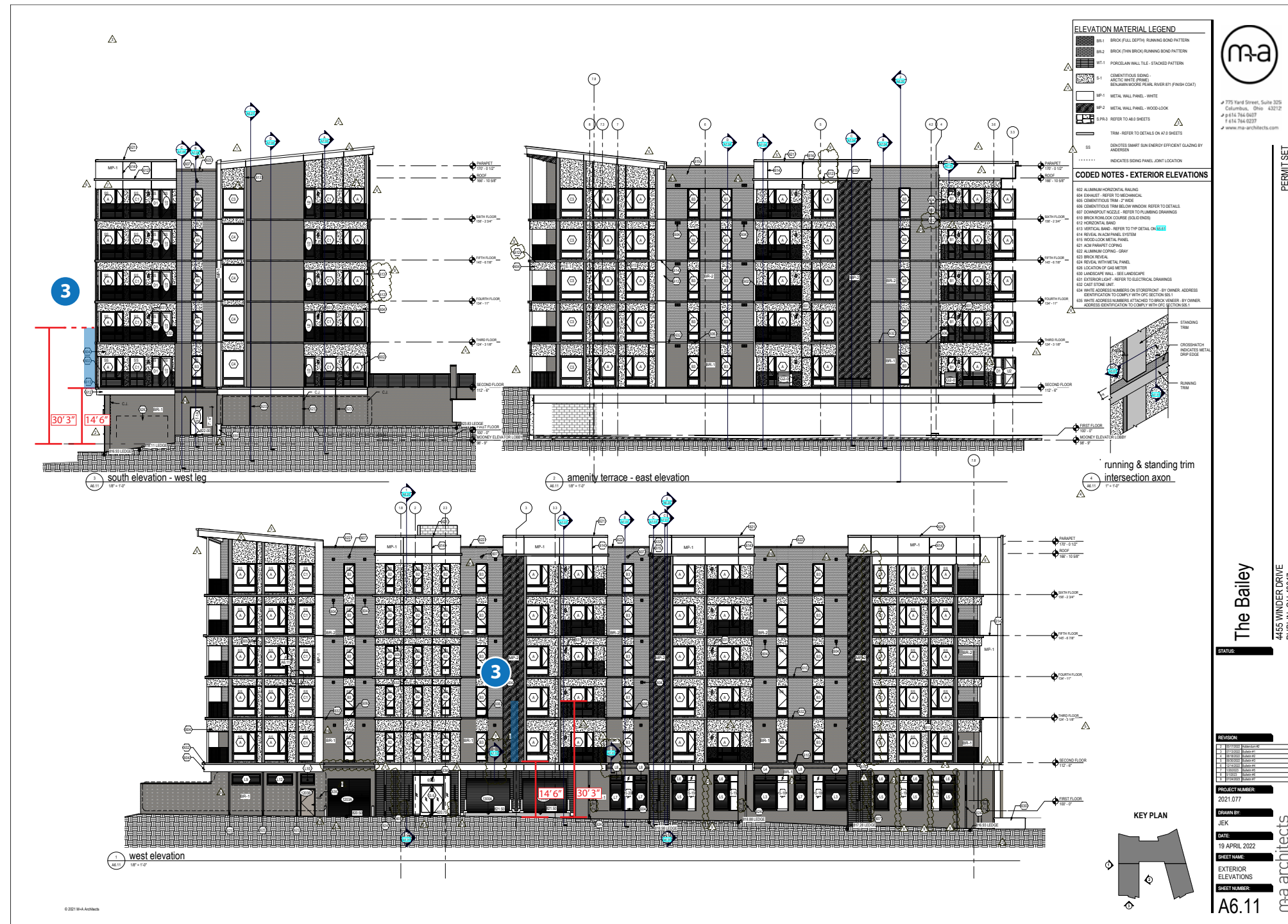
O'Reilly Office  
300 Spruce St. Suite 150  
Columbus, Ohio 43215  
614-754-1895





# F Block - The Bailey Exterior Signage Elevation

- 1 South Fascia Sign
- 2 North Canopy Sign
- 3 Blade Sign
- 4 Ground Sign



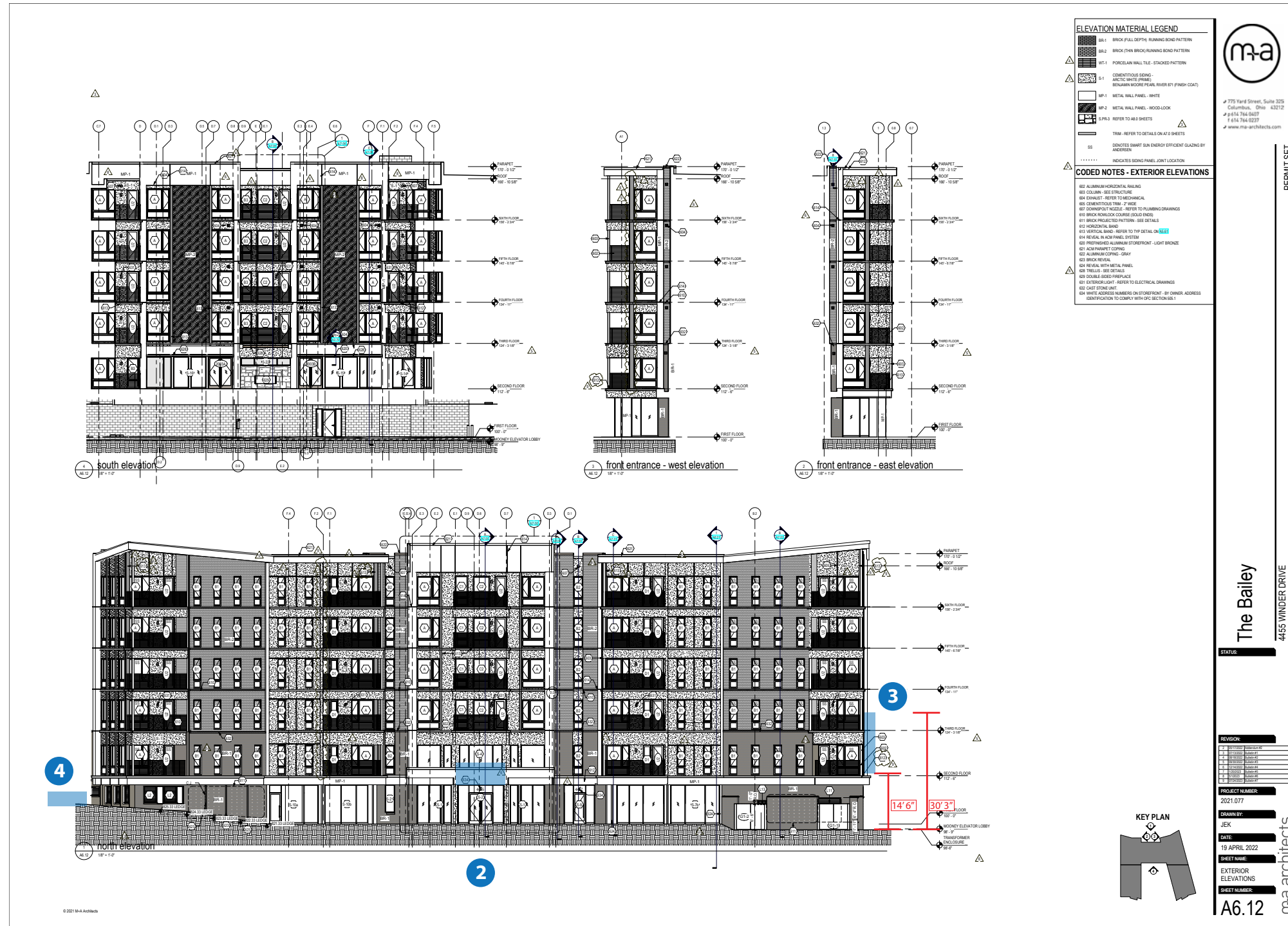
**O'Reilly Office**  
300 Spruce St. Suite 150  
Columbus, Ohio 43215  
614-754-1895



Drawing scaled down to 1" = 32'

# F Block - The Bailey Exterior Signage Elevation

- 1 South Fascia Sign
- 2 North Canopy Sign
- 3 Blade Sign
- 4 Ground Sign



**ELEVATION MATERIAL LEGEND**

- BR1 BRICK (FULL HEIGHT) RUNNING BOND PATTERN
- BR2 BRICK (OVER BRICK) RUNNING BOND PATTERN
- WT1 PORCELAIN WALL TILE - STACKED PATTERN
- CEM1 CEMENTITIOUS BONDING AGENT (WHITE FINISH)
- CEM2 CEMENTITIOUS BONDING AGENT (WHITE FINISH) WITH FINISH COAT
- MP1 METAL PANEL - WHITE
- MP2 METAL PANEL - WOODLOOK
- MP3 REFER TO A&S SHEETS
- TRIM - REFER TO DETAILS ON A&S SHEETS
- SS DENOTES SMART SUN ENERGY EFFICIENT GLAZING BY ANDERSEN
- ..... INDICATES SIGNING PANEL/JOINT LOCATION

**CODED NOTES - EXTERIOR ELEVATIONS**

- RS1 ALUMINUM HORIZONTAL RAILING
- RS2 COLUMN - SEE STRUCTURE
- RS3 EXHAUST - REFER TO MECHANICAL
- RS4 CEMENTITIOUS FINISH - REFER TO PLUMBING DRAWINGS
- RS5 DOWNSPOUT NODULE - REFER TO PLUMBING DRAWINGS
- RS6 BRICK MORTAR COURSE (GLAZED FINISH)
- RS7 BRICK PROJECTED PATTERN - SEE DETAILS
- RS8 HORIZONTAL BAND
- RS9 HORIZONTAL BAND - REFER TO TOP DETAIL ON SEE
- RS10 HORIZONTAL BAND - REFER TO TOP DETAIL ON SEE
- RS11 HORIZONTAL BAND - REFER TO TOP DETAIL ON SEE
- RS12 HORIZONTAL BAND - REFER TO TOP DETAIL ON SEE
- RS13 HORIZONTAL BAND - REFER TO TOP DETAIL ON SEE
- RS14 HORIZONTAL BAND - REFER TO TOP DETAIL ON SEE
- RS15 HORIZONTAL BAND - REFER TO TOP DETAIL ON SEE
- RS16 HORIZONTAL BAND - REFER TO TOP DETAIL ON SEE
- RS17 HORIZONTAL BAND - REFER TO TOP DETAIL ON SEE
- RS18 HORIZONTAL BAND - REFER TO TOP DETAIL ON SEE
- RS19 HORIZONTAL BAND - REFER TO TOP DETAIL ON SEE
- RS20 HORIZONTAL BAND - REFER TO TOP DETAIL ON SEE
- RS21 HORIZONTAL BAND - REFER TO TOP DETAIL ON SEE
- RS22 HORIZONTAL BAND - REFER TO TOP DETAIL ON SEE
- RS23 HORIZONTAL BAND - REFER TO TOP DETAIL ON SEE
- RS24 HORIZONTAL BAND - REFER TO TOP DETAIL ON SEE
- RS25 HORIZONTAL BAND - REFER TO TOP DETAIL ON SEE
- RS26 HORIZONTAL BAND - REFER TO TOP DETAIL ON SEE
- RS27 HORIZONTAL BAND - REFER TO TOP DETAIL ON SEE
- RS28 HORIZONTAL BAND - REFER TO TOP DETAIL ON SEE
- RS29 HORIZONTAL BAND - REFER TO TOP DETAIL ON SEE
- RS30 HORIZONTAL BAND - REFER TO TOP DETAIL ON SEE
- RS31 HORIZONTAL BAND - REFER TO TOP DETAIL ON SEE
- RS32 HORIZONTAL BAND - REFER TO TOP DETAIL ON SEE
- RS33 HORIZONTAL BAND - REFER TO TOP DETAIL ON SEE
- RS34 HORIZONTAL BAND - REFER TO TOP DETAIL ON SEE
- RS35 HORIZONTAL BAND - REFER TO TOP DETAIL ON SEE
- RS36 HORIZONTAL BAND - REFER TO TOP DETAIL ON SEE
- RS37 HORIZONTAL BAND - REFER TO TOP DETAIL ON SEE
- RS38 HORIZONTAL BAND - REFER TO TOP DETAIL ON SEE
- RS39 HORIZONTAL BAND - REFER TO TOP DETAIL ON SEE
- RS40 HORIZONTAL BAND - REFER TO TOP DETAIL ON SEE
- RS41 HORIZONTAL BAND - REFER TO TOP DETAIL ON SEE
- RS42 HORIZONTAL BAND - REFER TO TOP DETAIL ON SEE
- RS43 HORIZONTAL BAND - REFER TO TOP DETAIL ON SEE
- RS44 HORIZONTAL BAND - REFER TO TOP DETAIL ON SEE
- RS45 HORIZONTAL BAND - REFER TO TOP DETAIL ON SEE
- RS46 HORIZONTAL BAND - REFER TO TOP DETAIL ON SEE
- RS47 HORIZONTAL BAND - REFER TO TOP DETAIL ON SEE
- RS48 HORIZONTAL BAND - REFER TO TOP DETAIL ON SEE
- RS49 HORIZONTAL BAND - REFER TO TOP DETAIL ON SEE
- RS50 HORIZONTAL BAND - REFER TO TOP DETAIL ON SEE
- RS51 HORIZONTAL BAND - REFER TO TOP DETAIL ON SEE
- RS52 HORIZONTAL BAND - REFER TO TOP DETAIL ON SEE
- RS53 HORIZONTAL BAND - REFER TO TOP DETAIL ON SEE
- RS54 HORIZONTAL BAND - REFER TO TOP DETAIL ON SEE
- RS55 HORIZONTAL BAND - REFER TO TOP DETAIL ON SEE
- RS56 HORIZONTAL BAND - REFER TO TOP DETAIL ON SEE
- RS57 HORIZONTAL BAND - REFER TO TOP DETAIL ON SEE
- RS58 HORIZONTAL BAND - REFER TO TOP DETAIL ON SEE
- RS59 HORIZONTAL BAND - REFER TO TOP DETAIL ON SEE
- RS60 HORIZONTAL BAND - REFER TO TOP DETAIL ON SEE
- RS61 HORIZONTAL BAND - REFER TO TOP DETAIL ON SEE
- RS62 HORIZONTAL BAND - REFER TO TOP DETAIL ON SEE
- RS63 HORIZONTAL BAND - REFER TO TOP DETAIL ON SEE
- RS64 HORIZONTAL BAND - REFER TO TOP DETAIL ON SEE
- RS65 HORIZONTAL BAND - REFER TO TOP DETAIL ON SEE
- RS66 HORIZONTAL BAND - REFER TO TOP DETAIL ON SEE
- RS67 HORIZONTAL BAND - REFER TO TOP DETAIL ON SEE
- RS68 HORIZONTAL BAND - REFER TO TOP DETAIL ON SEE
- RS69 HORIZONTAL BAND - REFER TO TOP DETAIL ON SEE
- RS70 HORIZONTAL BAND - REFER TO TOP DETAIL ON SEE
- RS71 HORIZONTAL BAND - REFER TO TOP DETAIL ON SEE
- RS72 HORIZONTAL BAND - REFER TO TOP DETAIL ON SEE
- RS73 HORIZONTAL BAND - REFER TO TOP DETAIL ON SEE
- RS74 HORIZONTAL BAND - REFER TO TOP DETAIL ON SEE
- RS75 HORIZONTAL BAND - REFER TO TOP DETAIL ON SEE
- RS76 HORIZONTAL BAND - REFER TO TOP DETAIL ON SEE
- RS77 HORIZONTAL BAND - REFER TO TOP DETAIL ON SEE
- RS78 HORIZONTAL BAND - REFER TO TOP DETAIL ON SEE
- RS79 HORIZONTAL BAND - REFER TO TOP DETAIL ON SEE
- RS80 HORIZONTAL BAND - REFER TO TOP DETAIL ON SEE
- RS81 HORIZONTAL BAND - REFER TO TOP DETAIL ON SEE
- RS82 HORIZONTAL BAND - REFER TO TOP DETAIL ON SEE
- RS83 HORIZONTAL BAND - REFER TO TOP DETAIL ON SEE
- RS84 HORIZONTAL BAND - REFER TO TOP DETAIL ON SEE
- RS85 HORIZONTAL BAND - REFER TO TOP DETAIL ON SEE
- RS86 HORIZONTAL BAND - REFER TO TOP DETAIL ON SEE
- RS87 HORIZONTAL BAND - REFER TO TOP DETAIL ON SEE
- RS88 HORIZONTAL BAND - REFER TO TOP DETAIL ON SEE
- RS89 HORIZONTAL BAND - REFER TO TOP DETAIL ON SEE
- RS90 HORIZONTAL BAND - REFER TO TOP DETAIL ON SEE
- RS91 HORIZONTAL BAND - REFER TO TOP DETAIL ON SEE
- RS92 HORIZONTAL BAND - REFER TO TOP DETAIL ON SEE
- RS93 HORIZONTAL BAND - REFER TO TOP DETAIL ON SEE
- RS94 HORIZONTAL BAND - REFER TO TOP DETAIL ON SEE
- RS95 HORIZONTAL BAND - REFER TO TOP DETAIL ON SEE
- RS96 HORIZONTAL BAND - REFER TO TOP DETAIL ON SEE
- RS97 HORIZONTAL BAND - REFER TO TOP DETAIL ON SEE
- RS98 HORIZONTAL BAND - REFER TO TOP DETAIL ON SEE
- RS99 HORIZONTAL BAND - REFER TO TOP DETAIL ON SEE
- RS100 HORIZONTAL BAND - REFER TO TOP DETAIL ON SEE



775 Ward Street, Suite 305  
Columbus, Ohio 43212  
# 614 744 8837  
F 614 744 9237  
www.ma-architects.com

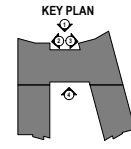
PERMIT SET

The Bailey  
4465 WINDER DRIVE  
DUBLIN, OH 43017

STATUS:

REVISION	DATE	BY	CHKD

PROJECT NUMBER:  
2021.077  
DRAWN BY:  
JEK  
DATE:  
19 APRIL 2022  
SHEET NAME:  
EXTERIOR ELEVATIONS  
SHEET NUMBER:  
A6.12



ma architects



O'Reilly Office  
300 Spruce St. Suite 150  
Columbus, Ohio 43215  
614-754-1895



Drawing scaled down to 1" = 32'



THE BAILEY  
AT BRIDGE PARK

BRIDGE PARK  
DUBLIN, OH

CRAWFORD HOYING

ma<sup>+</sup> design

O'Reilly Office

300 Spruce St. Suite 150  
Columbus, Ohio 43215  
614-754-1895

ksc  
KESSLER  
SIGN  
COMPANY

MA Design Provided Rendierng

ma<sup>+</sup> design



THE BAILEY  
AT BRIDGE PARK

BRIDGE PARK  
DUBLIN, OH

CRAWFORD HOYING

ma<sup>+</sup> design

O'Reilly Office

300 Spruce St. Suite 150  
Columbus, Ohio 43215  
614-754-1895

ksc  
KESSLER  
SIGN  
COMPANY

MA Design Provided Rendierng

ma<sup>+</sup> design



THE BAILEY  
AT BRIDGE PARK

BRIDGE PARK  
DUBLIN, OH

CRAWFORD HOYING

ma+ design

O'Reilly Office

300 Spruce St. Suite 150  
Columbus, Ohio 43215  
614-754-1895

ksc  
KESSLER  
SIGN  
COMPANY

MA Design Provided Rendierng

ma+ design



THE BAILEY  
AT BRIDGE PARK

BRIDGE PARK  
DUBLIN, OH

CRAWFORD HOYING

ma<sup>+</sup> design

O'Reilly Office  
300 Spruce St. Suite 150  
Columbus, Ohio 43215  
614-754-1895

ksc  
KESLER  
SIGN  
COMPANY

MA Design Provided Rendierng

ma<sup>+</sup> design





MA Design Provided Rendierngs -Detail



O'Reilly Office  
 300 Spruce St. Suite 150  
 Columbus, Ohio 43215  
 614-754-1895



2 North Canopy Sign

3 Blade Sign



North Elevation

2

3

Crawford Hoying Provided Rendering  
Modified by O'Reilly Office



1 South Fascia Sign



Backlit Wall Mounted Sign

Crawford Hoying Provided Rendering



South Elevation - East Leg



**CRAWFORD HOYING**

**THE BAILEY**  
AT BRIDGE PARK

CLIENT | Crawford Hoying - The Bailey  
 LOCATION | Dublin, OH  
 SAVED AS |  
 Crawford\_Hoying\_The\_Bailey  
 DATE | 8/10/23  
 REVISIONS | 10/13/23

SALESMAN | Adam Kessler  
 DESIGNER | Jared Faber

SALESMAN INITIAL OF APPROVAL |  
 X \_\_\_\_\_

- GLOSS
- SATIN
- SEMI-GLOSS
- FLAT

CIRCUITS | 1  
 VOLTAGE | 120V



- 5
- 3
- 3
- 3

ALL CONCEPTS, DESIGNS, AND PLANS REPRESENTED BY THIS DOCUMENT ARE THE PROPERTY OF THE KESSLER DESIGN GROUP AND ARE FOR THE USE ON THE PROJECT SPECIFIED IN THIS DOCUMENT.

COPYRIGHT 2023 BY KESSLER DESIGN GROUP  
 ALL RIGHTS RESERVED

2669 NATIONAL ROAD  
 P.O. BOX 0785  
 ZANESVILLE, OHIO 43701-0785  
 740-453-0668 | 1-800-686-1870

**THE KESSLER DESIGN GROUP**

**PAINTED RETURNS - ALL**

SATIN BLACK

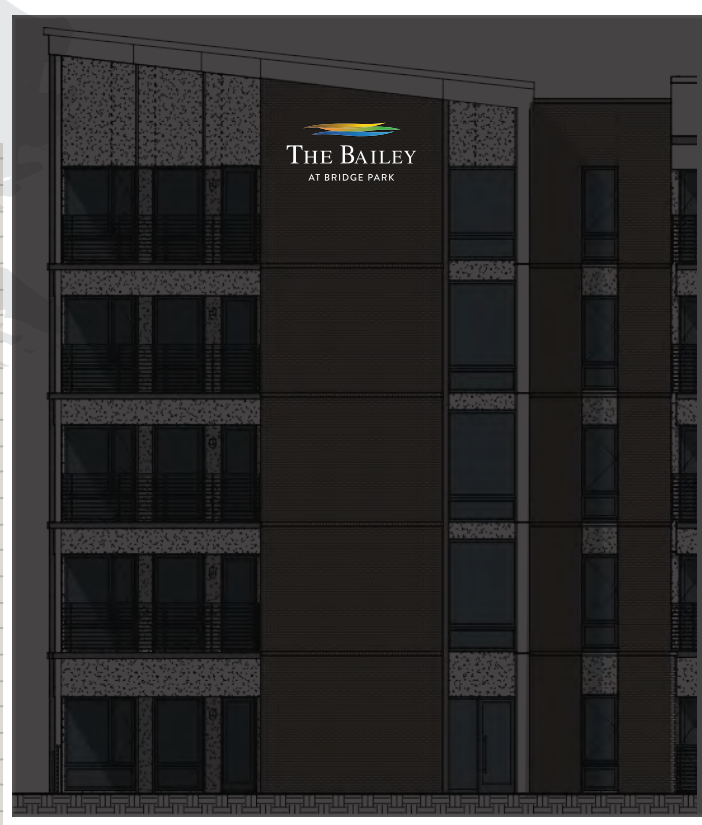
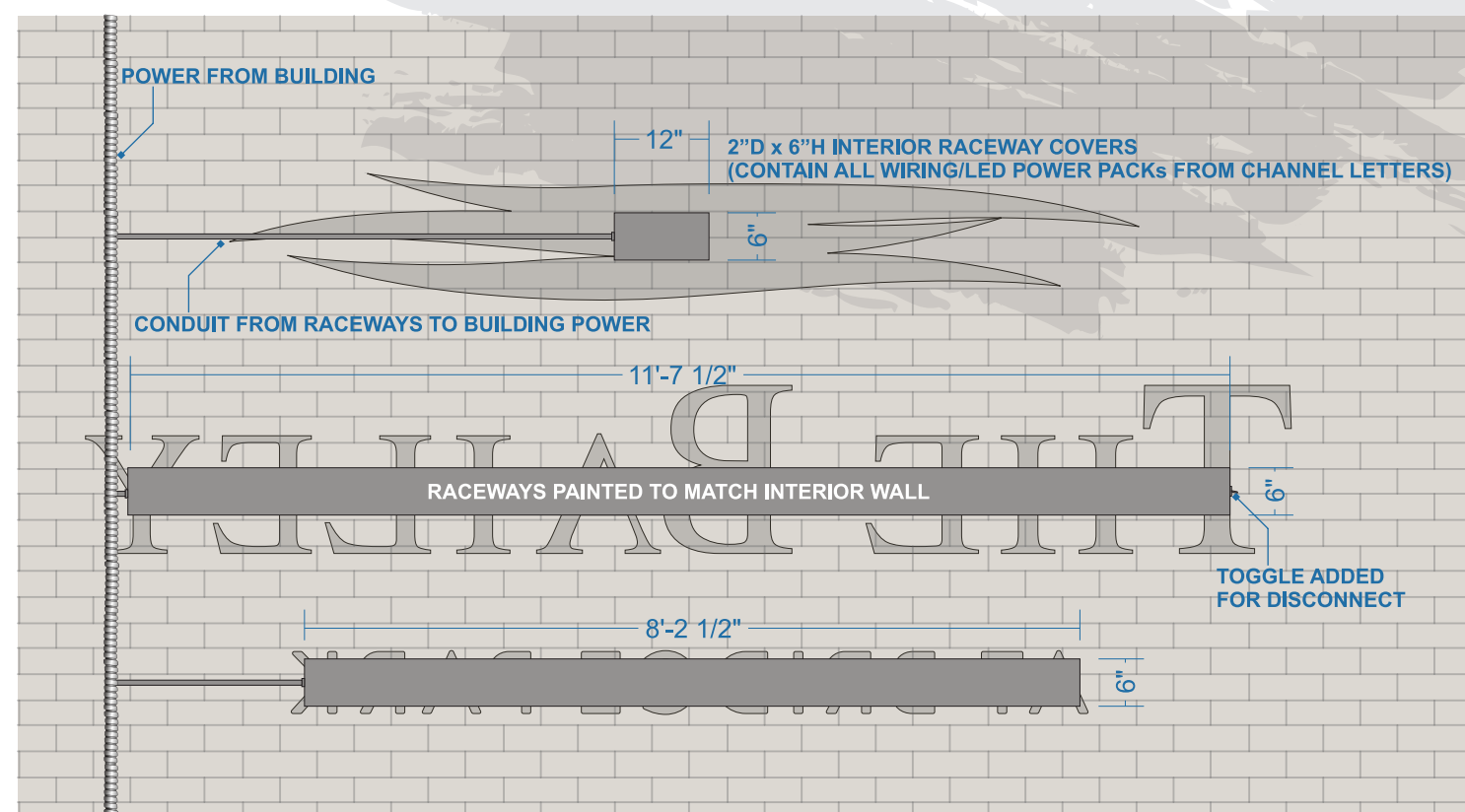
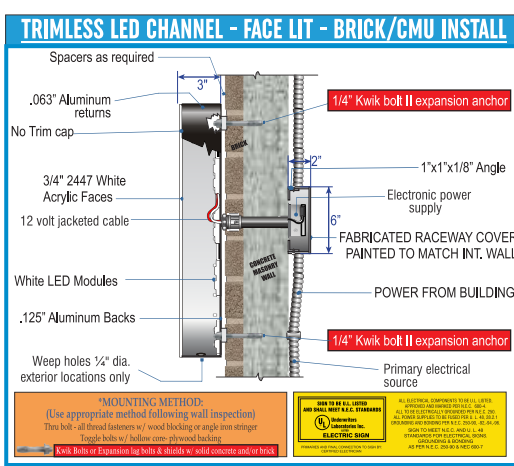
**TRANS. VINYL FACE**

DIGITAL PRINT

**CHANNEL LETTER FACES**

3/4" ACRYLIC

2447 WHITE



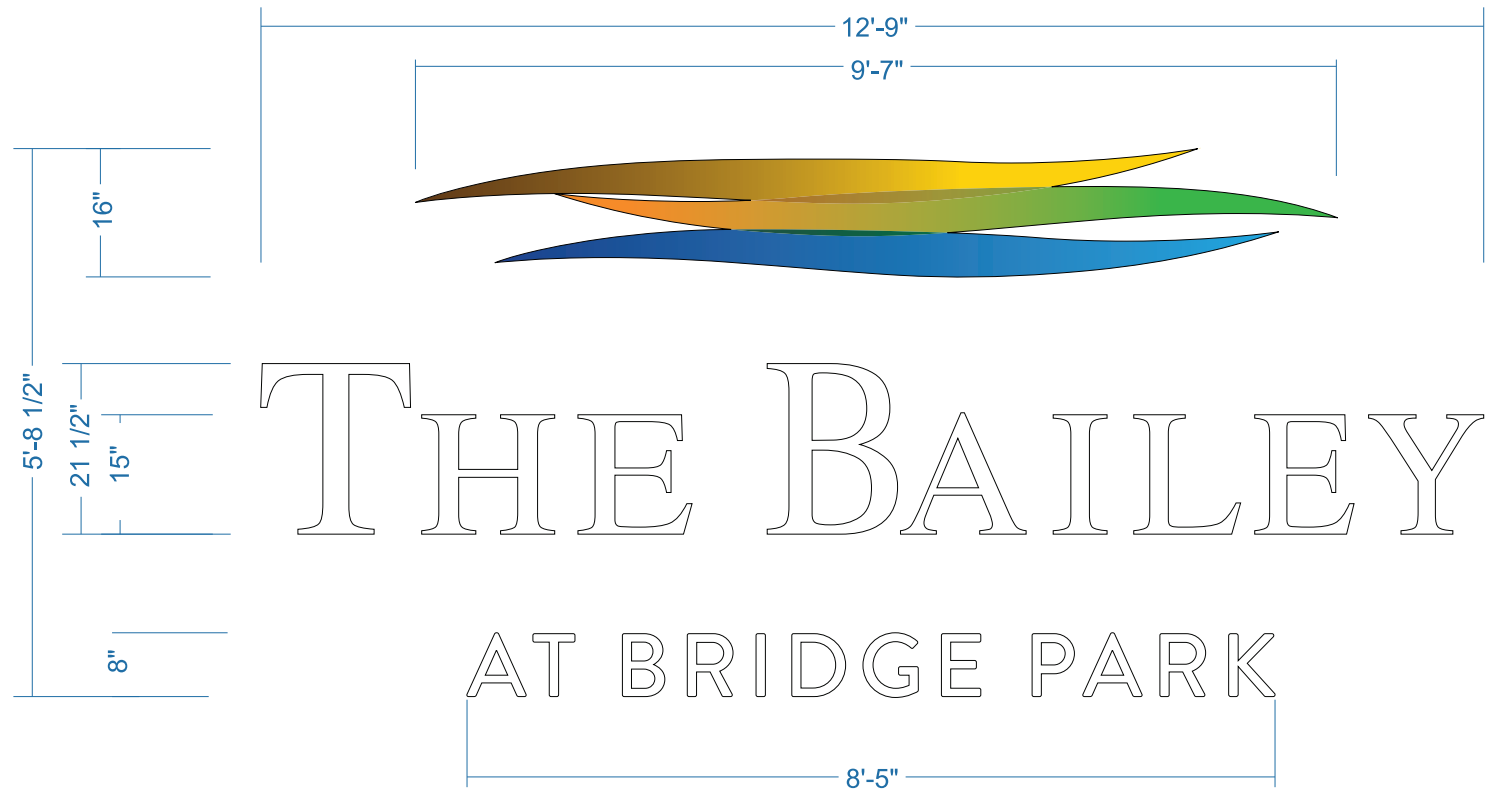
**DIGITAL PRINT**

**WHITE ACRYLIC**

**SATIN BLACK RETURNS**

**NEW S/F LED ILLUMINATED TRIMLESS CHANNEL LETTERS ATTACHED TO BRICK/CMU WALL**

SCALE: 1/2" = 1'



FACES 3/4" 2447 WHITE ACRYLIC w/PRINT APPLIED TO LOGO

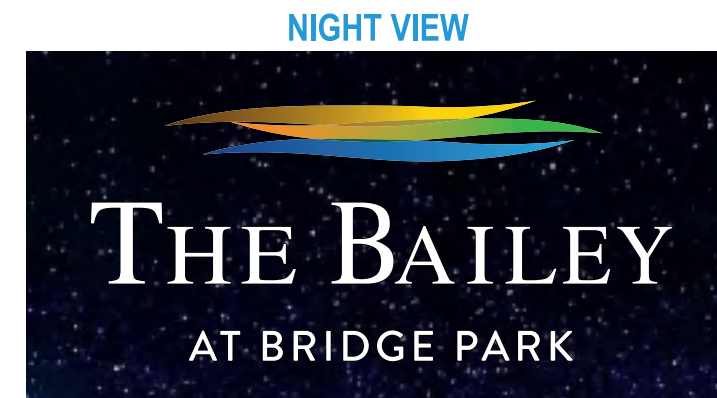
RETURNS 3" STD SATIN BLACK ON LETTERS & 3" DEEP .063 ALUM PAINTED SATIN BLACK w/WELDED .125 ALUM BACK

LEDS GRID IN LOGO USING QWIK MOD 2 WHITE & 1-2 ROWS IN LTRS USING QWIK MOD 2 MINI WHITE BOTH 7100K

POWER 120V PP REMOTE MOUNTED

NEW S/F LED ILLUMINATED TRIMLESS CHANNEL LETTERS ATTACHED TO BRICK/CMU WALL

SCALE: 1/2" = 1'

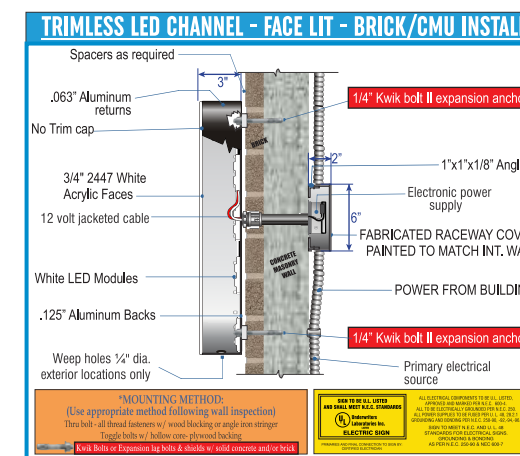


NIGHT VIEW

TRANS. VINYL FACE  
DIGITAL PRINT

PAINTED RETURNS - ALL  
SATIN BLACK

CHANNEL LETTER FACES  
3/4" ACRYLIC 2447 WHITE



SQ. FT:  
41

CRAWFORD HOYING

THE BAILEY  
AT BRIDGE PARK

CLIENT | Crawford Hoying - The Bailey

LOCATION | Dublin, OH

SAVED AS |

Crawford\_Hoying\_The\_Bailey

DATE | 8/10/23

REVISIONS | 10/16/23

SALESMAN | Adam Kessler

DESIGNER | Jared Faber

SALESMAN INITIAL OF APPROVAL |

X \_\_\_\_\_

GLOSS  SATIN  
 SEMI-GLOSS  FLAT

CIRCUITS | 1

VOLTAGE | 120V



5  
3  
3  
3  
2

ALL CONCEPTS, DESIGNS, AND PLANS REPRESENTED BY THIS DOCUMENT ARE THE PROPERTY OF THE KESSLER DESIGN GROUP AND ARE FOR THE USE ON THE PROJECT SPECIFIED IN THIS DOCUMENT.

COPYRIGHT 2023 BY KESSLER DESIGN GROUP  
ALL RIGHTS RESERVED

2669 NATIONAL ROAD  
P.O. BOX 0785  
ZANESVILLE, OHIO 43701-0785  
740-453-0668 | 1-800-686-1870

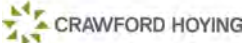


2 North Canopy Sign



Awning Entrance Signage

Crawford Hoying Provided Rendering



North Elevation

CLIENT | Crawford Hoying - The Bailey

LOCATION | Dublin, OH

SAVED AS |

Crawford\_Hoying\_The\_Bailey

DATE | 8/10/23

REVISIONS | 1/9/24

SALESMAN | Adam Kessler

DESIGNER | Jared Faber

SALESMAN INITIAL OF APPROVAL |

X \_\_\_\_\_

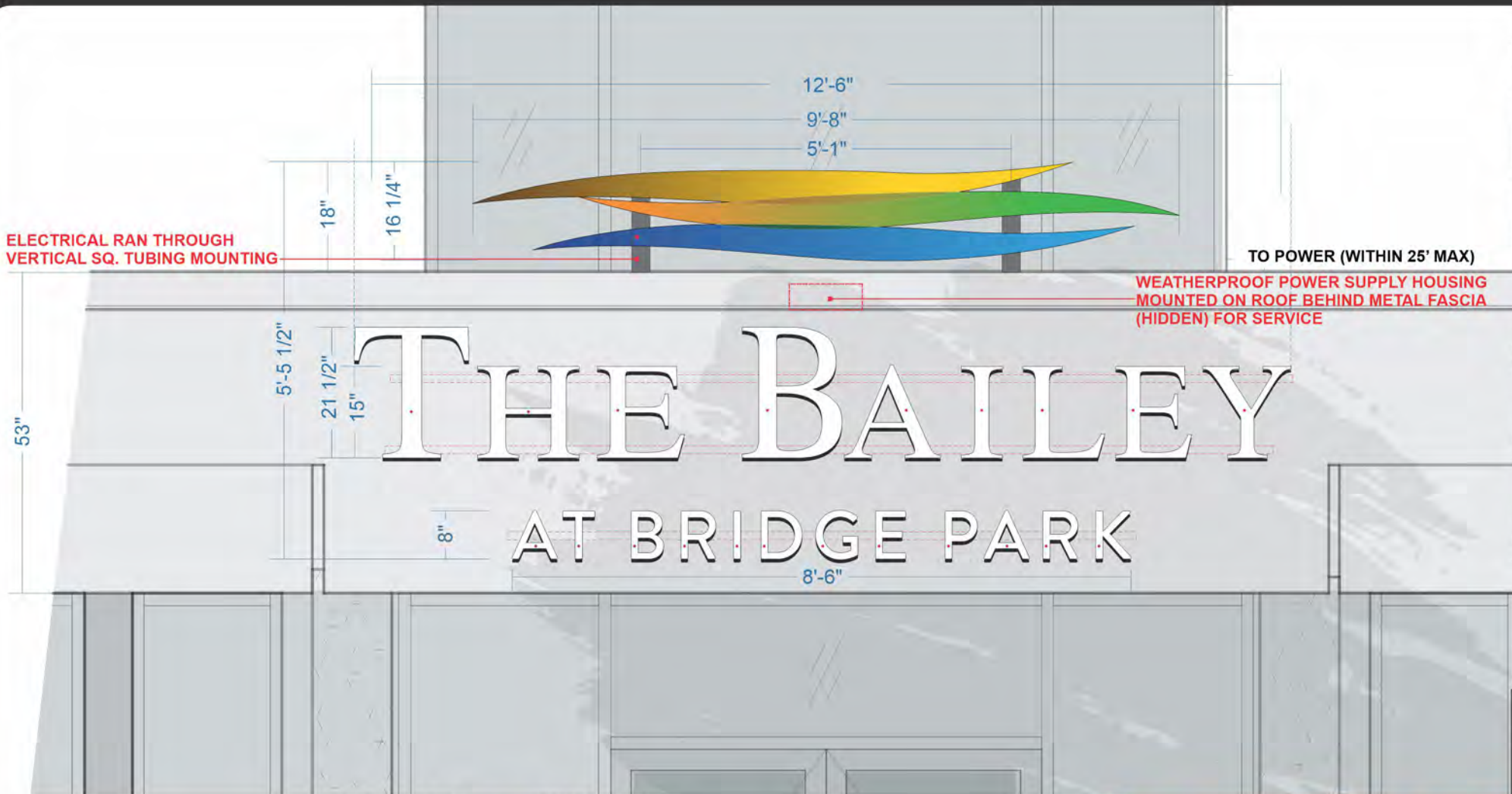
- GLOSS
- SATIN
- SEMI-GLOSS
- FLAT



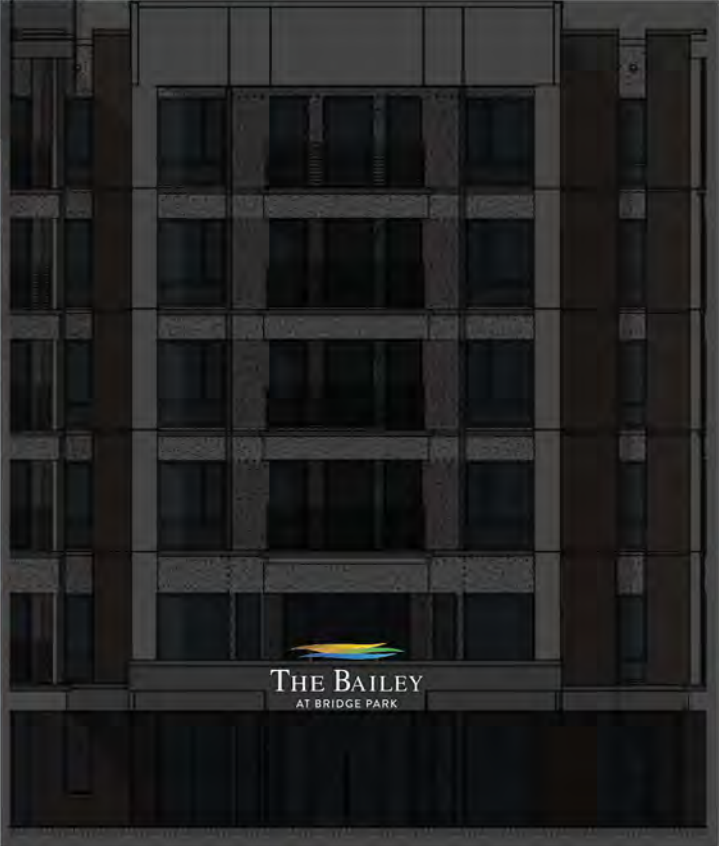
CIRCUITS   1-20AMP	5
VOLTAGE   120V	3
DRAW   5AMP MAX	2
	1

ALL CONCEPTS, DESIGNS, AND PLANS REPRESENTED BY THIS DOCUMENT ARE THE PROPERTY OF THE KESSLER DESIGN GROUP AND ARE FOR THE USE ON THE PROJECT SPECIFIED IN THIS DOCUMENT.

COPYRIGHT 2023 BY KESSLER DESIGN GROUP ALL RIGHTS RESERVED



North Elevation

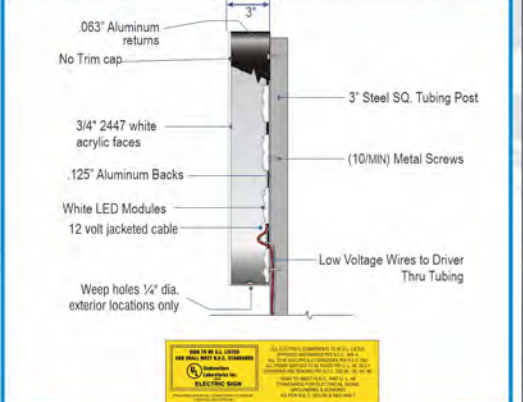


North Elevation

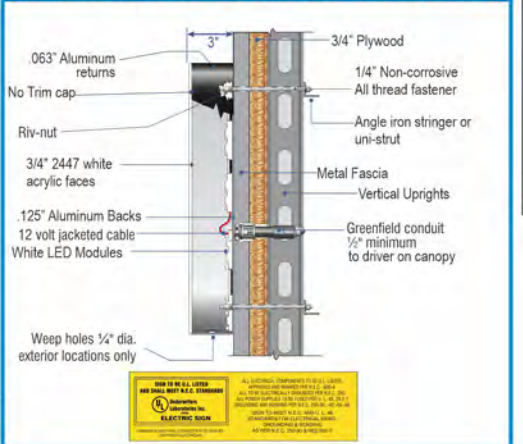
- PAINTED RETURNS - ALL
- SATIN BLACK
- TRANS. VINYL FACE
- DIGITAL PRINT
- CHANNEL LETTER FACES
- 3/4" ACRYLIC
- 2447 WHITE



**TRIMLESS LED CHANNEL - FACE LIT - VERTICAL POST INSTALL**



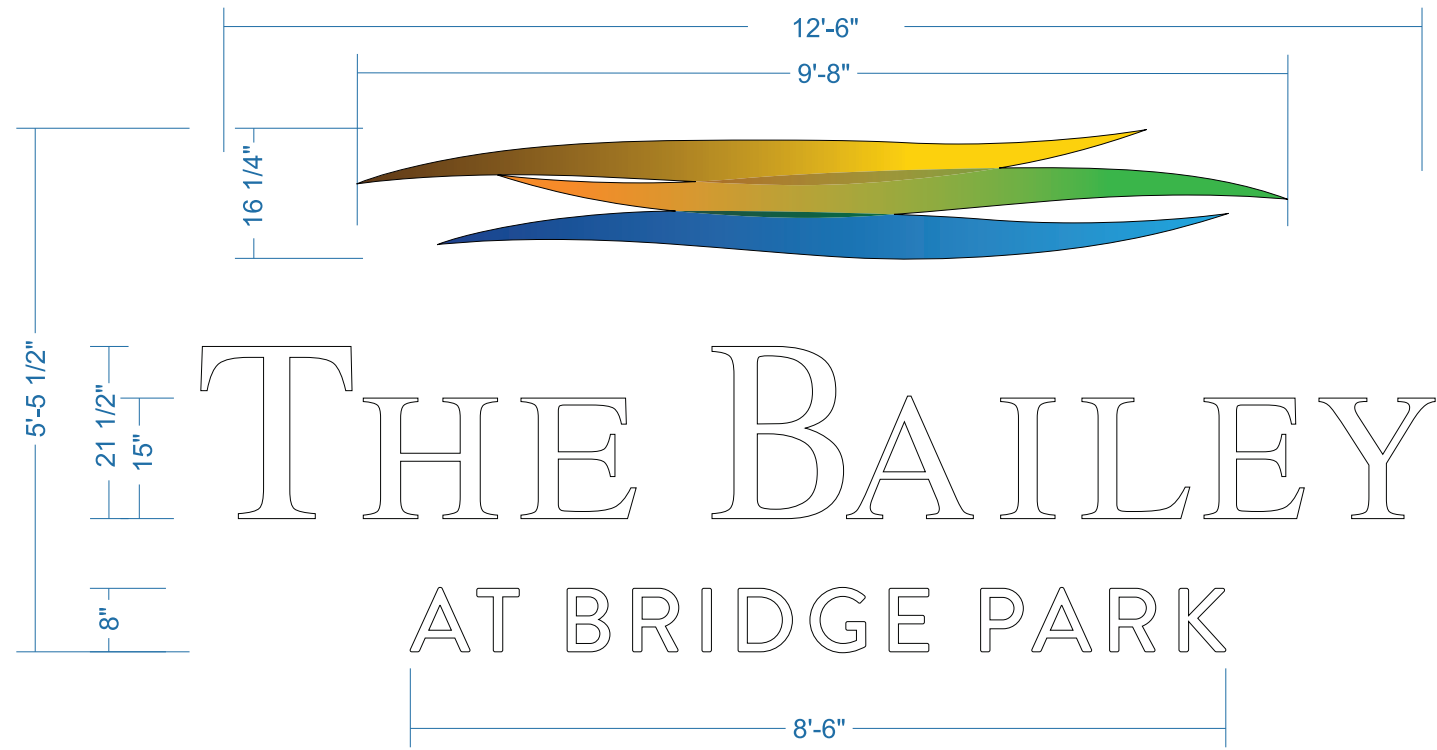
**TRIMLESS LED CHANNEL - FACE LIT - FASCIA INSTALL**



**NEW S/F LED ILLUMINATED TRIMLESS CHANNEL LETTERS ATTACHED TO BUILDING AWNING**

SCALE: 1/2" = 1'

- DIGITAL PRINT
- WHITE ACRYLIC
- SATIN BLACK RETURNS



FACES 3/4" 2447 WHITE ACRYLIC w/PRINT APPLIED TO LOGO

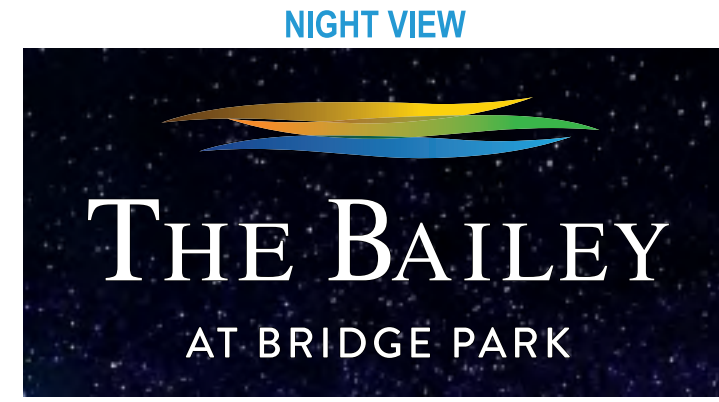
RETURNS 3" STD SATIN BLACK ON LETTERS & 3" DEEP .063 ALUM PAINTED SATIN BLACK w/WELDED .125 ALUM BACK

LEDS GRID IN LOGO USING QWIK MOD 2 WHITE & 1-2 ROWS IN LTRS USING QWIK MOD 2 MINI WHITE BOTH 7100K

POWER 120V PP REMOTE MOUNTED

**NEW S/F LED ILLUMINATED TRIMLESS CHANNEL LETTERS ATTACHED TO BUILDING AWNING**

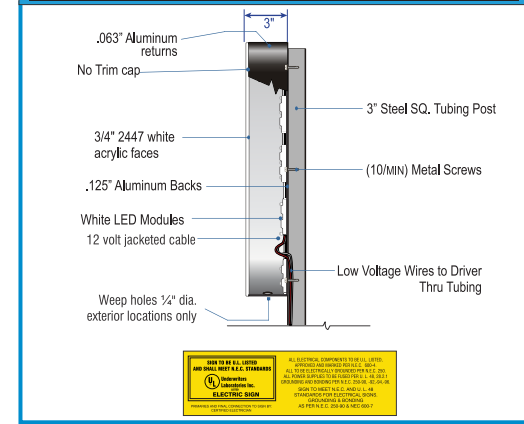
SCALE: 1/2" = 1'



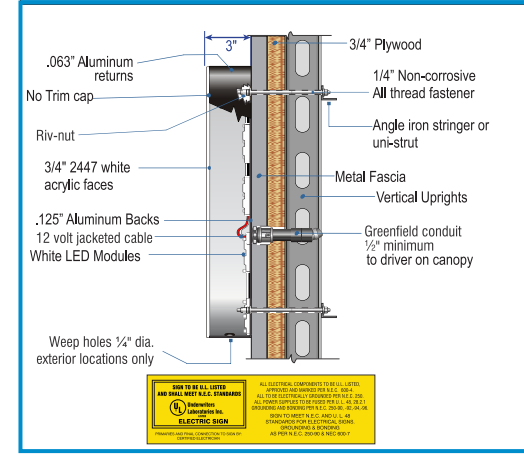
NIGHT VIEW

- TRANS. VINYL FACE
  - DIGITAL PRINT
- PAINTED RETURNS - ALL
  - SATIN BLACK
- CHANNEL LETTER FACES
  - 3/4" ACRYLIC 2447 WHITE

**TRIMLESS LED CHANNEL - FACE LIT - VERTICAL POST INSTALL**



**TRIMLESS LED CHANNEL - FACE LIT - FASCIA INSTALL**



**SQ. FT:**  
**42**



CLIENT | Crawford Hoying - The Bailey

LOCATION | Dublin, OH

SAVED AS |

Crawford\_Hoying\_The\_Bailey

DATE | 8/10/23

REVISIONS | 10/16/23

SALESMAN | Adam Kessler

DESIGNER | Jared Faber

SALESMAN INITIAL OF APPROVAL |

X \_\_\_\_\_

- GLOSS
- SATIN
- SEMI-GLOSS
- FLAT

CIRCUITS | 1

VOLTAGE | 120V



- 5
- 3
- 3
- 3
- 2

ALL CONCEPTS, DESIGNS, AND PLANS REPRESENTED BY THIS DOCUMENT ARE THE PROPERTY OF THE KESSLER DESIGN GROUP AND ARE FOR THE USE ON THE PROJECT SPECIFIED IN THIS DOCUMENT.

COPYRIGHT 2023 BY KESSLER DESIGN GROUP ALL RIGHTS RESERVED

2669 NATIONAL ROAD  
P.O. BOX 0785  
ZANESVILLE, OHIO 43701-0785  
740-453-0668 | 1-800-686-1870



# 3 Blade Sign

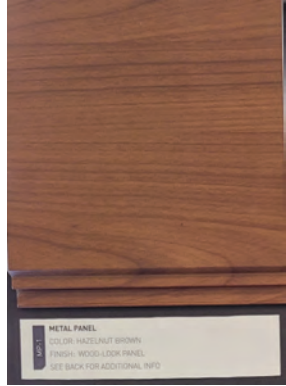


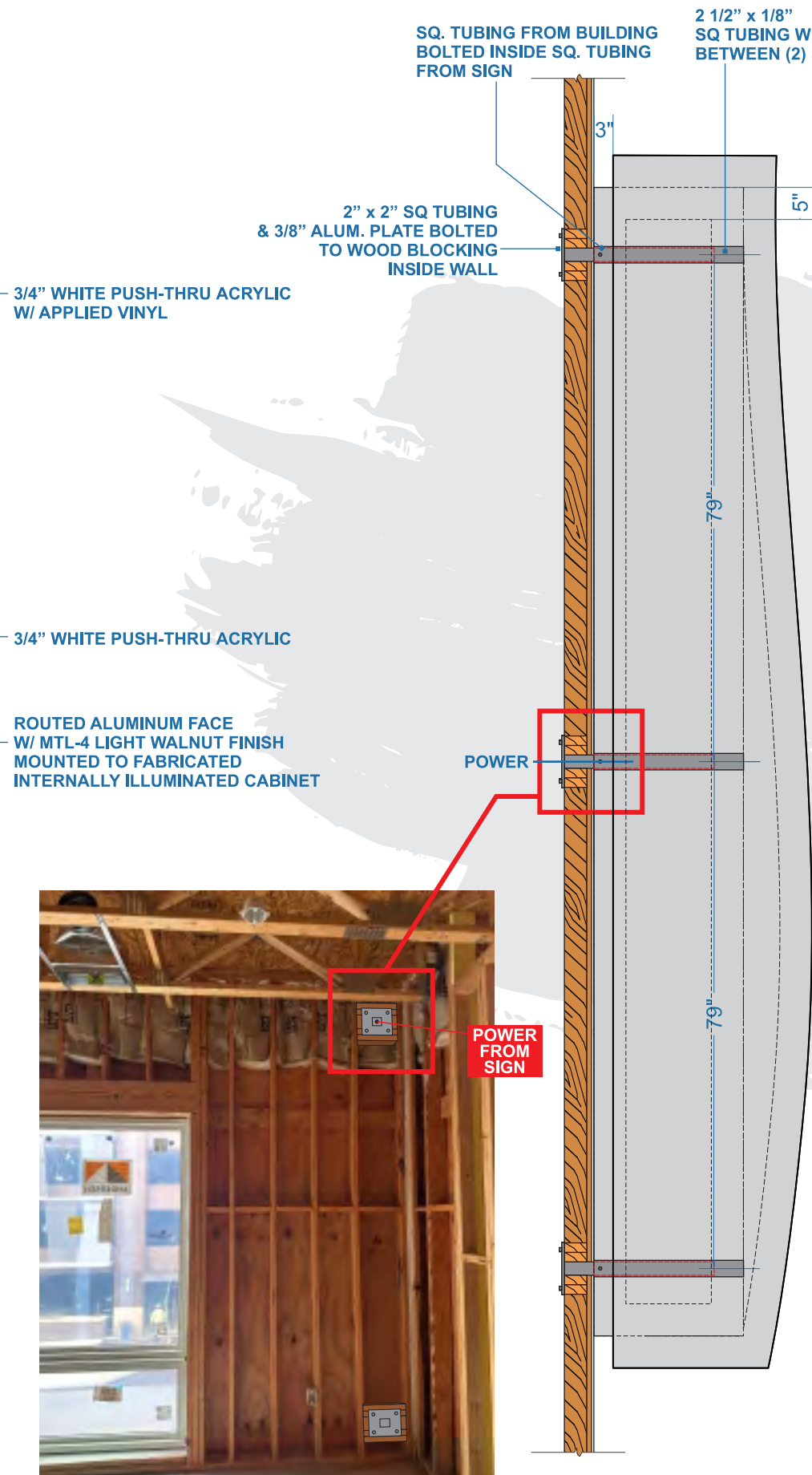
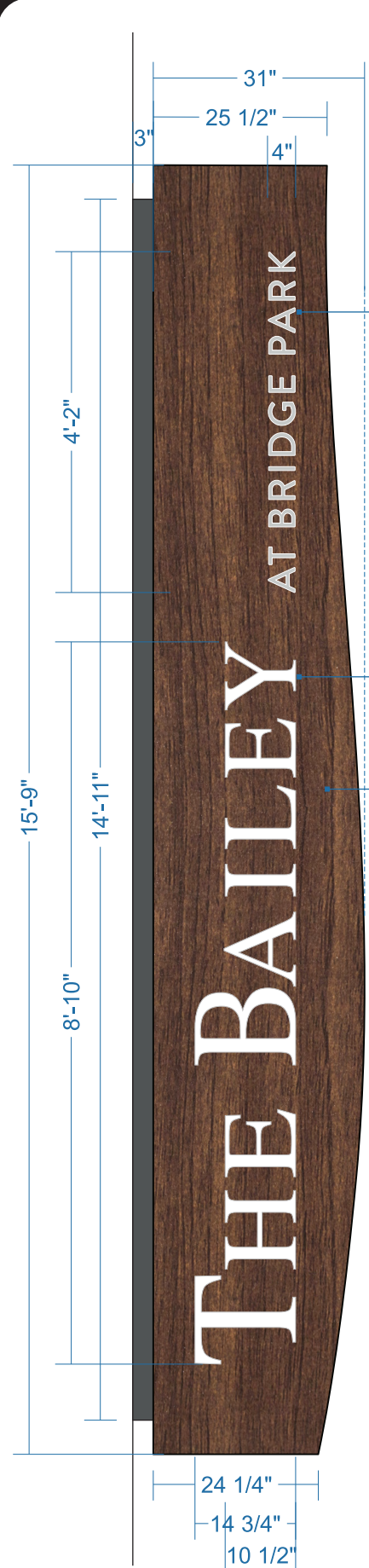
North Elevation

## Blade Sign Notes

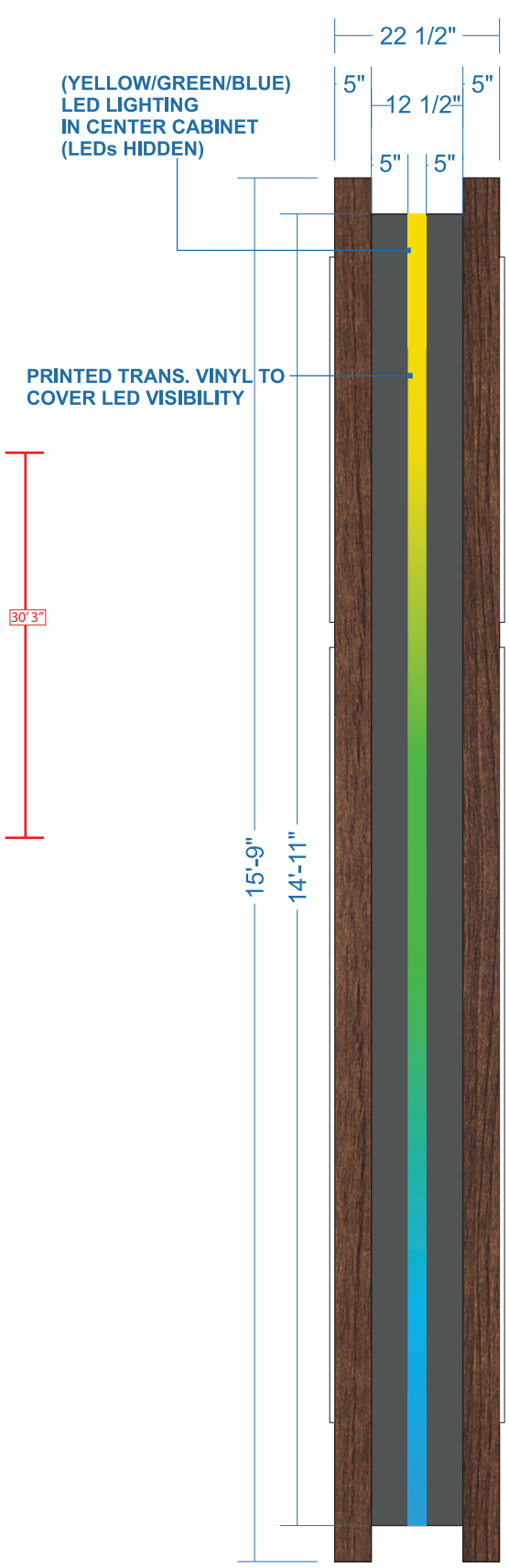
MTL-4 Finish to Match Exterior MP-1 Finish

**MP-1 - Metal Panel**  
Manufacturer: Alumaboard  
Style: 6" Plank  
Color: Hazelnut Brown  
Format: Metal Cladding  
\* Refer to item 1 on page A011 of Design Submission.





North Elevation



**NEW D/F LED ILLUMINATED BLADE SIGN W/ PUSH-THRU ACRYLIC LETTERING & LED LIGHTING**

SCALE: 1/2" = 1'

PANTONE 445	DIGITAL PRINT	PANTONE 428 ORACAL TRANS. 8500-072 LIGHT GREY	MTL-4 LT WALNUT	WHITE ACRYLIC

**CRAWFORD HOYING**

**THE BAILEY**  
AT BRIDGE PARK

CLIENT | Crawford Hoying - The Bailey

LOCATION | Dublin, OH

SAVED AS |

Crawford\_Hoying\_The\_Bailey

DATE | 8/10/23

REVISIONS | 10/16/23

SALESMAN | Adam Kessler

DESIGNER | Jared Faber

SALESMAN INITIAL OF APPROVAL |

X \_\_\_\_\_

- |                                     |                                |
|-------------------------------------|--------------------------------|
| <input type="checkbox"/> GLOSS      | <input type="checkbox"/> SATIN |
| <input type="checkbox"/> SEMI-GLOSS | <input type="checkbox"/> FLAT  |

CIRCUITS | 1

VOLTAGE | 120V



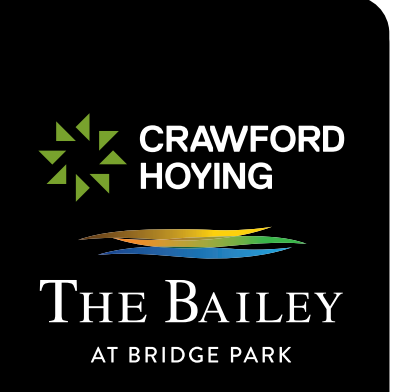
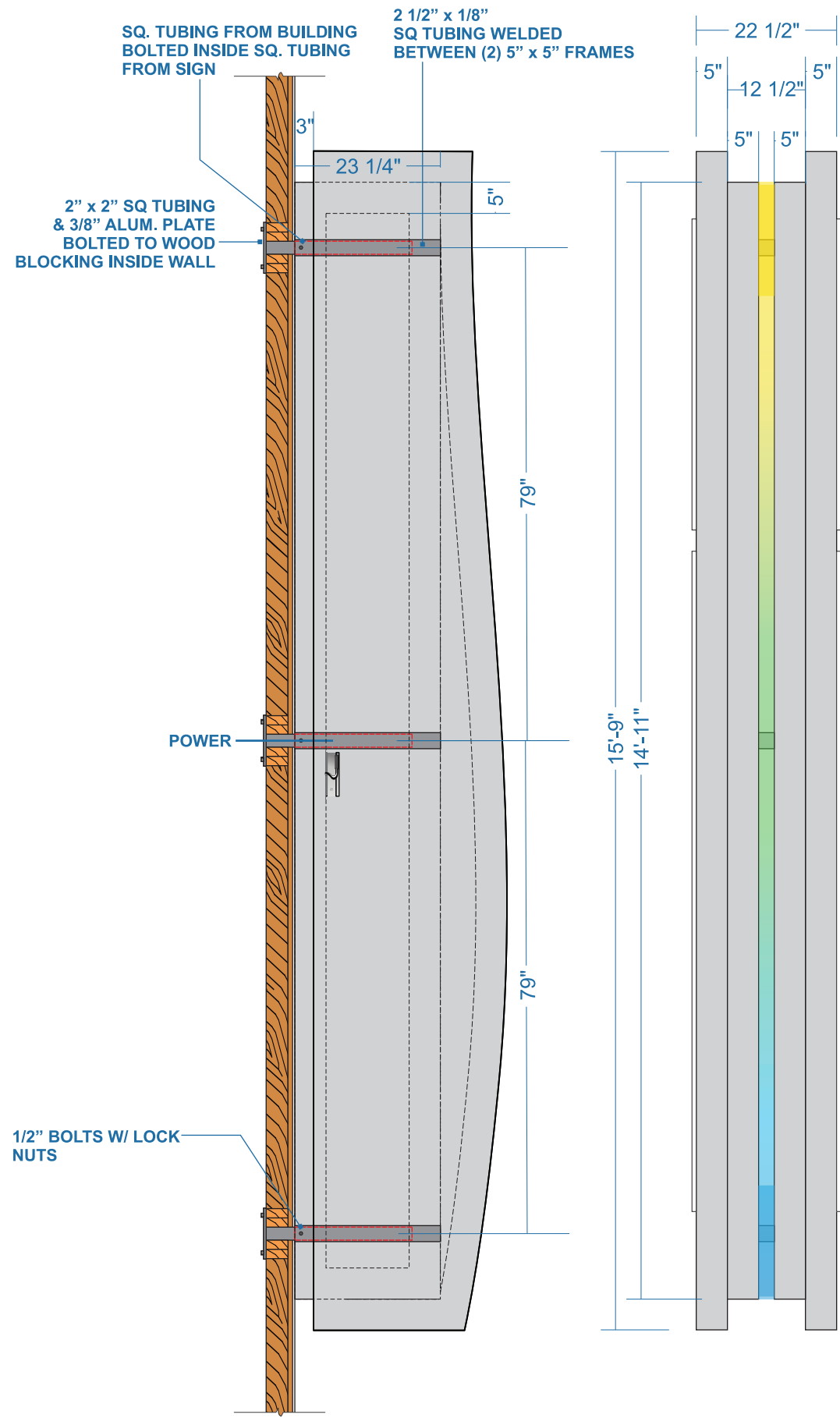
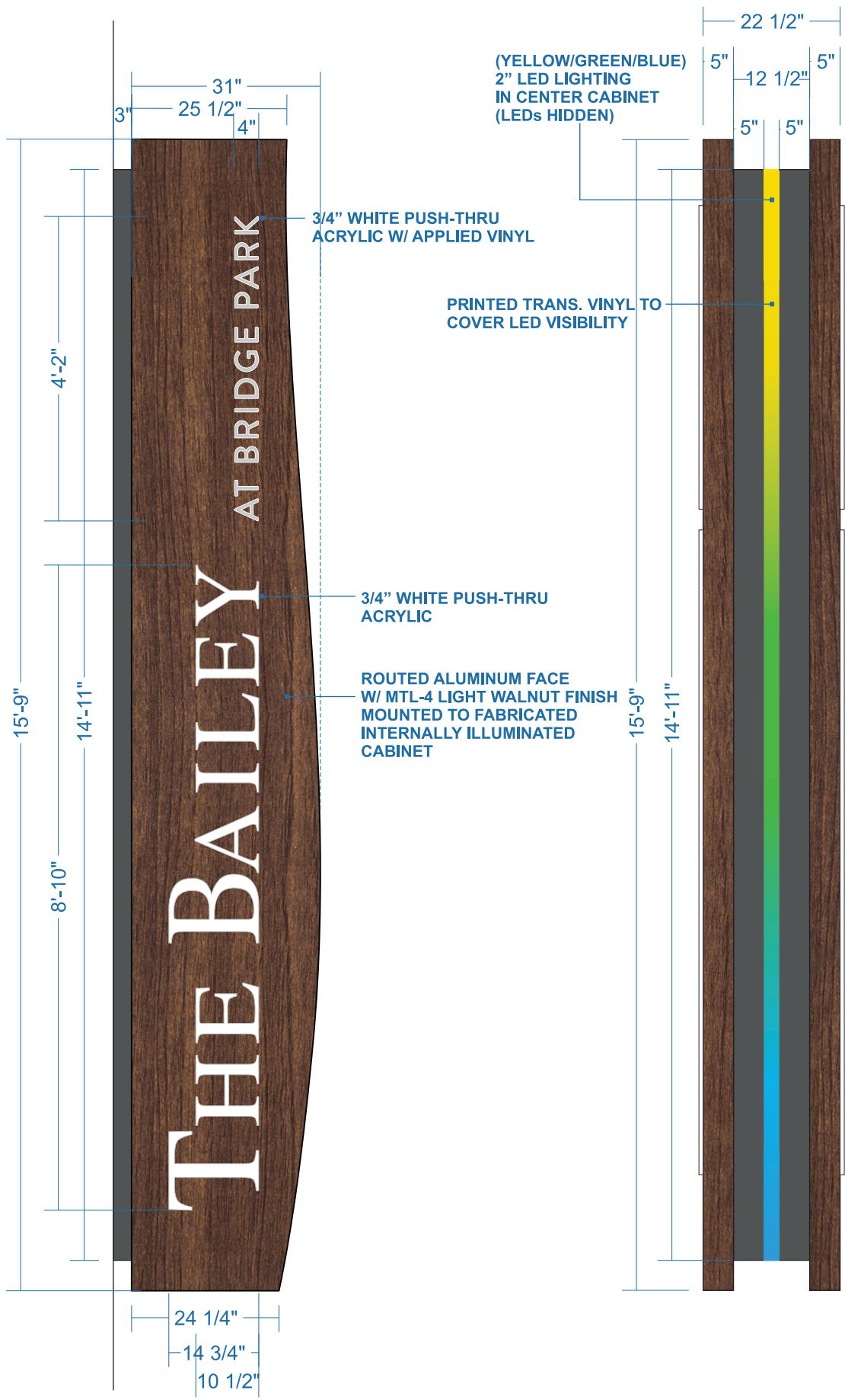
- 5
- 3
- 3
- 3
- 2

ALL CONCEPTS, DESIGNS, AND PLANS REPRESENTED BY THIS DOCUMENT ARE THE PROPERTY OF THE KESSLER DESIGN GROUP AND ARE FOR THE USE ON THE PROJECT SPECIFIED IN THIS DOCUMENT.

COPYRIGHT 2023 BY KESSLER DESIGN GROUP ALL RIGHTS RESERVED

2669 NATIONAL ROAD  
P.O. BOX 0785  
ZANESVILLE, OHIO 43701-0785  
740-453-0668 | 1-800-686-1870

**THE KESSLER DESIGN GROUP**



CLIENT | Crawford Hoying - The Bailey  
 LOCATION | Dublin, OH  
 SAVED AS |  
**Crawford\_Hoying\_The\_Bailey**  
 DATE | 8/10/23  
 REVISIONS | 10/16/23  
 SALESMAN | Adam Kessler  
 DESIGNER | Jared Faber  
 SALESMAN INITIAL OF APPROVAL |  
 X \_\_\_\_\_

- GLOSS
- SATIN
- SEMI-GLOSS
- FLAT

CIRCUITS | 1  
 VOLTAGE | 120V

- 5
- 3
- 3
- 3
- 2

ALL CONCEPTS, DESIGNS, AND PLANS REPRESENTED BY THIS DOCUMENT ARE THE PROPERTY OF THE KESSLER DESIGN GROUP AND ARE FOR THE USE ON THE PROJECT SPECIFIED IN THIS DOCUMENT.

COPYRIGHT 2023 BY KESSLER DESIGN GROUP  
 ALL RIGHTS RESERVED

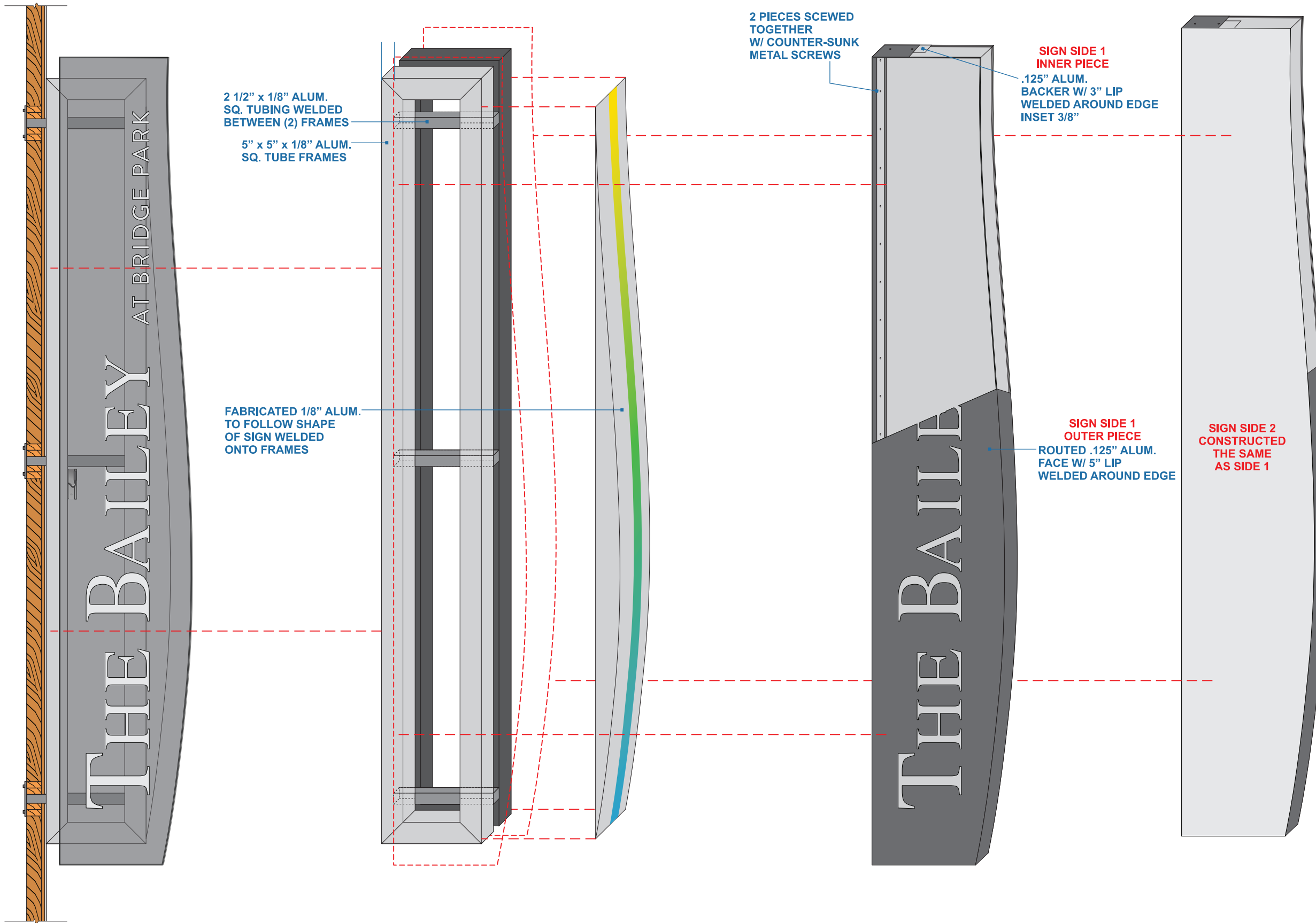
2669 NATIONAL ROAD  
 P.O. BOX 0785  
 ZANESVILLE, OHIO 43701-0785  
 740-453-0668 | 1-800-686-1870

**NEW D/F LED ILLUMINATED BLADE SIGN W/ PUSH-THRU ACRYLIC LETTERING & LED LIGHTING**

SCALE: 1/2" = 1'

PANTONE 445	DIGITAL PRINT	PANTONE 428 ORACAL TRANS. 8500-072 LIGHT GREY	MTL-4 LT WALNUT	WHITE ACRYLIC

**SQ. FT:**  
**41**



CLIENT | Crawford Hoying - The Bailey

LOCATION | Dublin, OH

SAVED AS |

Crawford\_Hoying\_The\_Bailey

DATE | 8/10/23

REVISIONS | 10/16/23

SALESMAN | Adam Kessler

DESIGNER | Jared Faber

SALESMAN INITIAL OF APPROVAL |

X \_\_\_\_\_

- |                                     |                                |
|-------------------------------------|--------------------------------|
| <input type="checkbox"/> GLOSS      | <input type="checkbox"/> SATIN |
| <input type="checkbox"/> SEMI-GLOSS | <input type="checkbox"/> FLAT  |

CIRCUITS | 1

VOLTAGE | 120V



- 5
- 3
- 3
- 3
- 2

ALL CONCEPTS, DESIGNS, AND PLANS REPRESENTED BY THIS DOCUMENT ARE THE PROPERTY OF THE KESSLER DESIGN GROUP AND ARE FOR THE USE ON THE PROJECT SPECIFIED IN THIS DOCUMENT.

COPYRIGHT 2023 BY KESSLER DESIGN GROUP  
ALL RIGHTS RESERVED

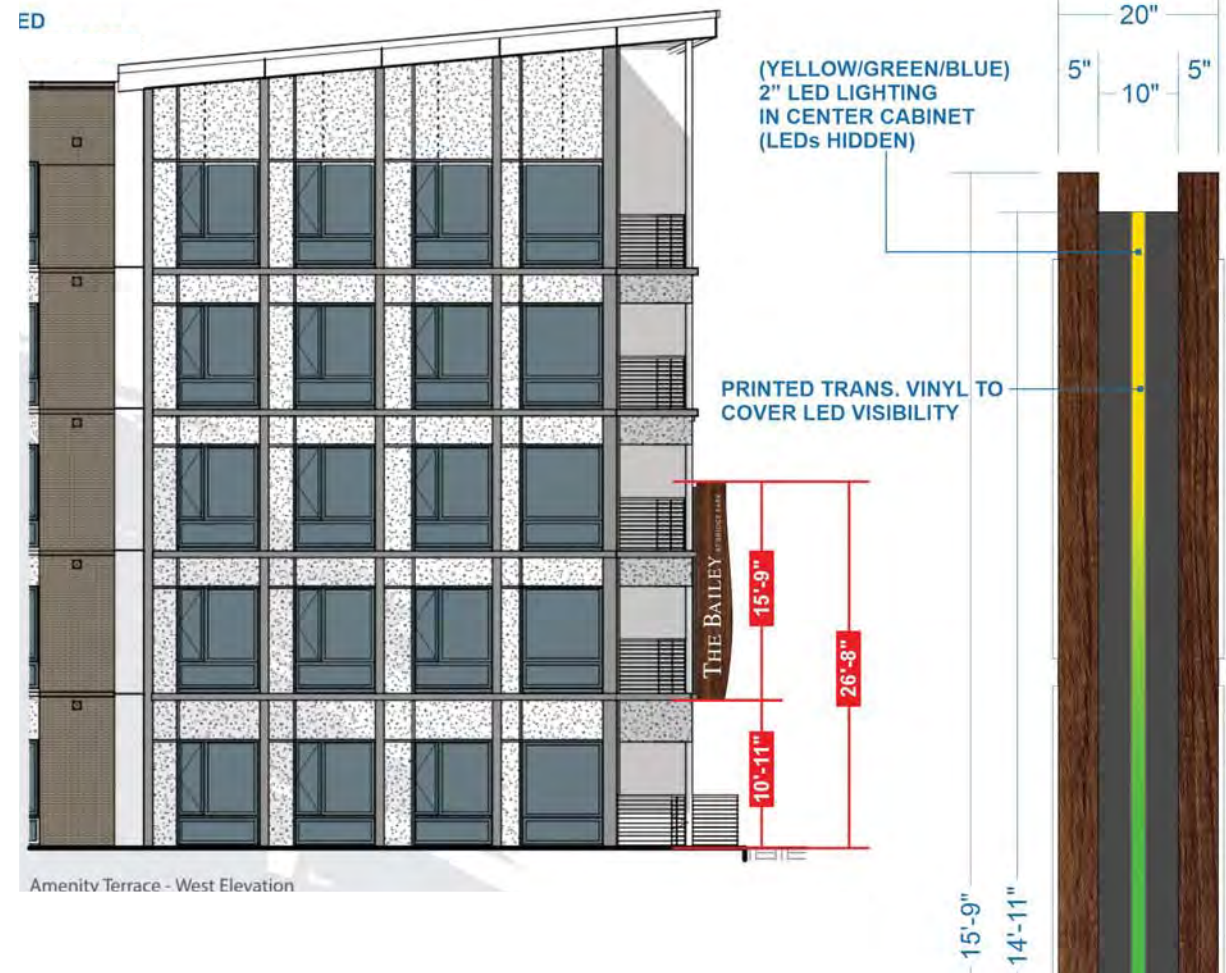
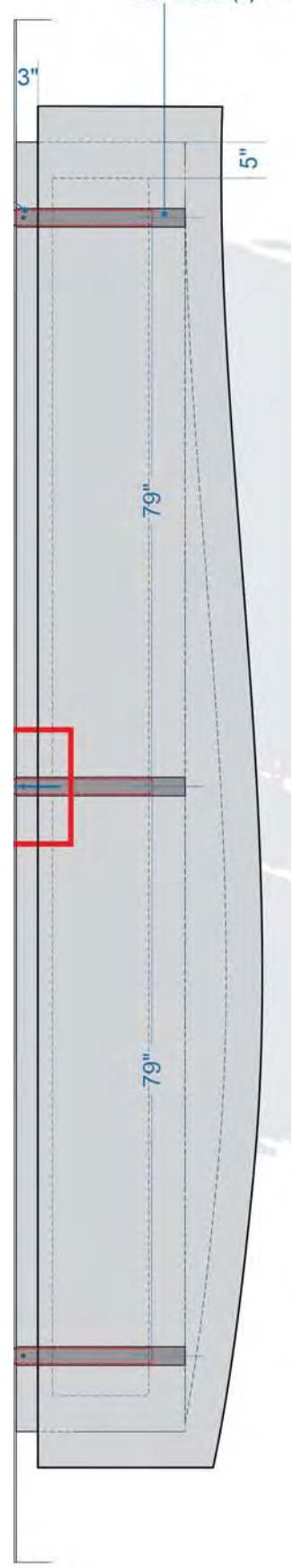
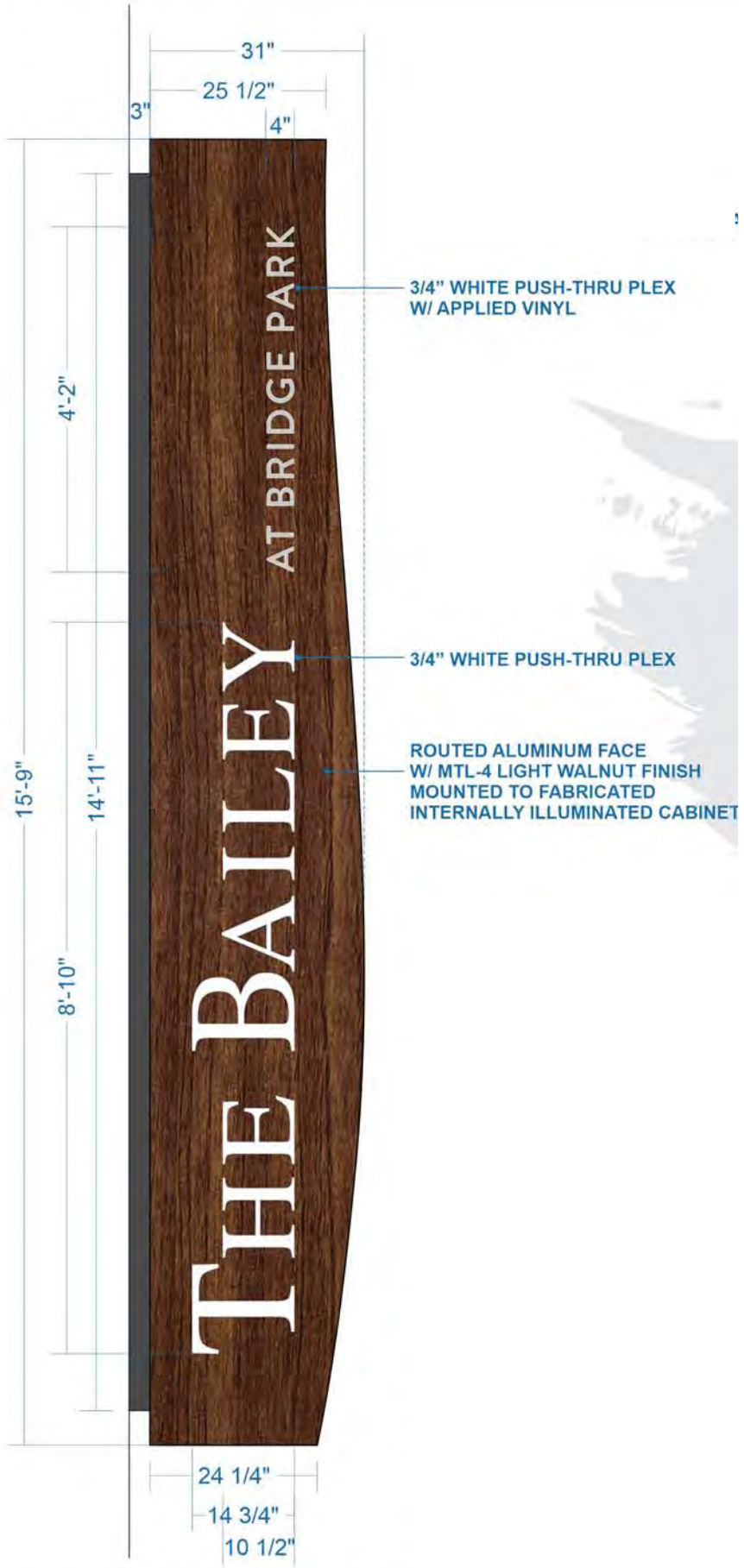
2669 NATIONAL ROAD  
P.O. BOX 0785  
ZANESVILLE, OHIO 43701-0785  
740-453-0668 | 1-800-686-1870



**NEW D/F LED ILLUMINATED BLADE SIGN W/ PUSH-THRU ACRYLIC LETTERING & LED LIGHTING**

SCALE: 1/2" = 1'

**SQ. FT:**  
**41**



CLIENT | Crawford Hoying - The Bailey

LOCATION | Dublin, OH

SAVED AS |

Crawford\_Hoying\_The\_Bailey

DATE | 8/10/23

REVISIONS | 10/13/23

SALESMAN | Adam Kessler

DESIGNER | Jared Faber

SALESMAN INITIAL OF APPROVAL |

X

- GLOSS     SATIN
- SEMI-GLOSS     FLAT

CIRCUITS | 1

VOLTAGE | 120V

- 5
- 3
- 3
- 3

ALL CONCEPTS, DESIGNS, AND PLANS REPRESENTED BY THIS DOCUMENT ARE THE PROPERTY OF THE KESSLER DESIGN GROUP AND ARE FOR THE USE ON THE PROJECT SPECIFIED IN THIS DOCUMENT.

COPYRIGHT 2023 BY KESSLER DESIGN GROUP ALL RIGHTS RESERVED

2669 NATIONAL ROAD  
P.O. BOX 0785  
ZANESVILLE, OHIO 43701-0785  
740-453-0668 | 1-800-686-1870

**THE KESSLER DESIGN GROUP**

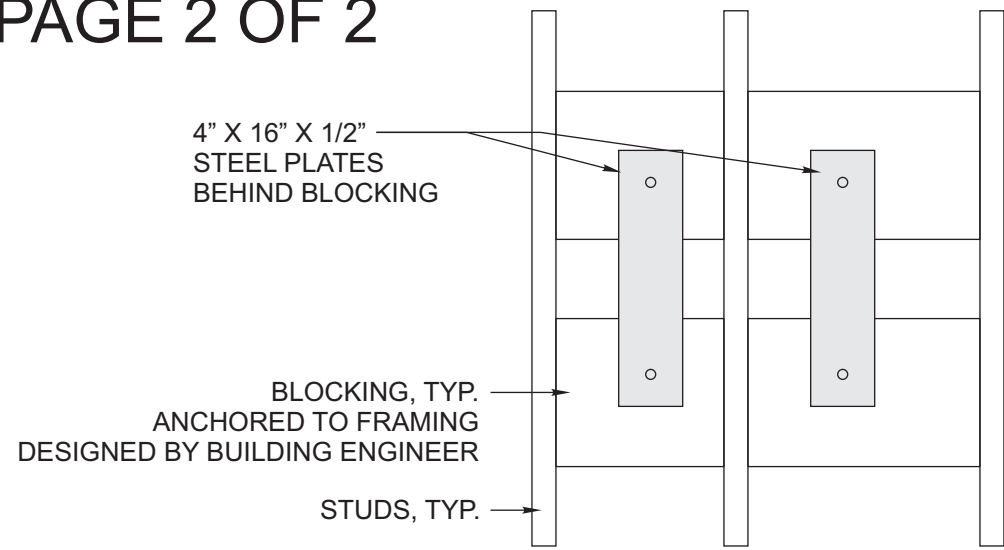
THE BAILEY - DUBLIN, OH  
PRELIMINARY  
PAGE 1 OF 2

 PANTONE 445	 DIGITAL PRINT	 PANTONE 428 ORACAL TRANS. 8500-072 LIGHT GREY	 MTL-4 LT WALNUT	 WHITE PLEX
-----------------	-------------------	--	---------------------	----------------

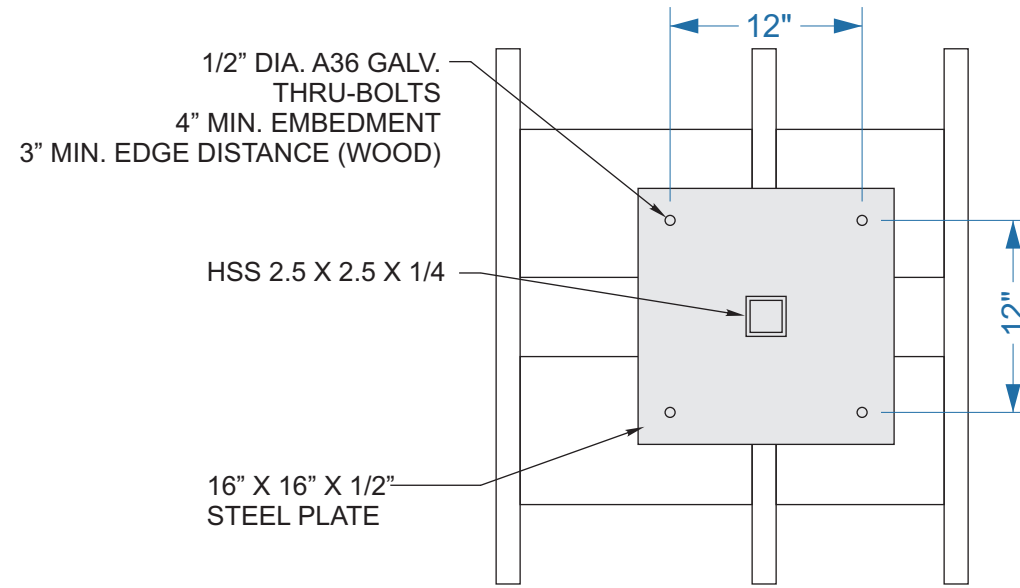
NEW D/F LED ILLUMINATED BLADE SIGN W/ PUSH-THRU LETTERING & LED LIGHTING

SCALE: 1/2" = 1'

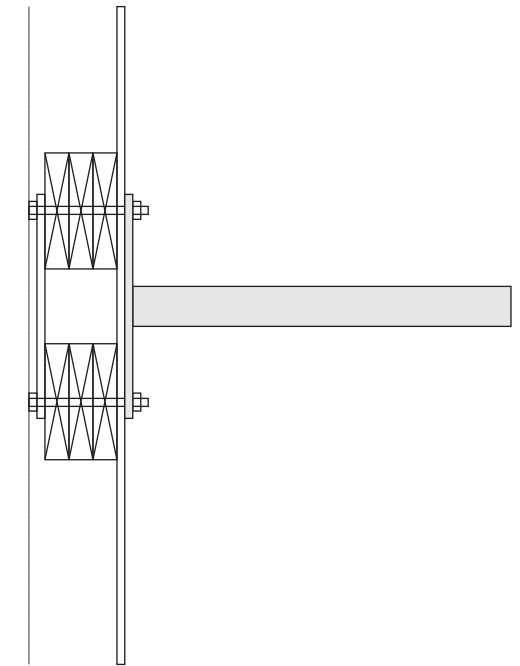
THE BAILEY - DUBLIN, OH  
PRELIMINARY  
PAGE 2 OF 2



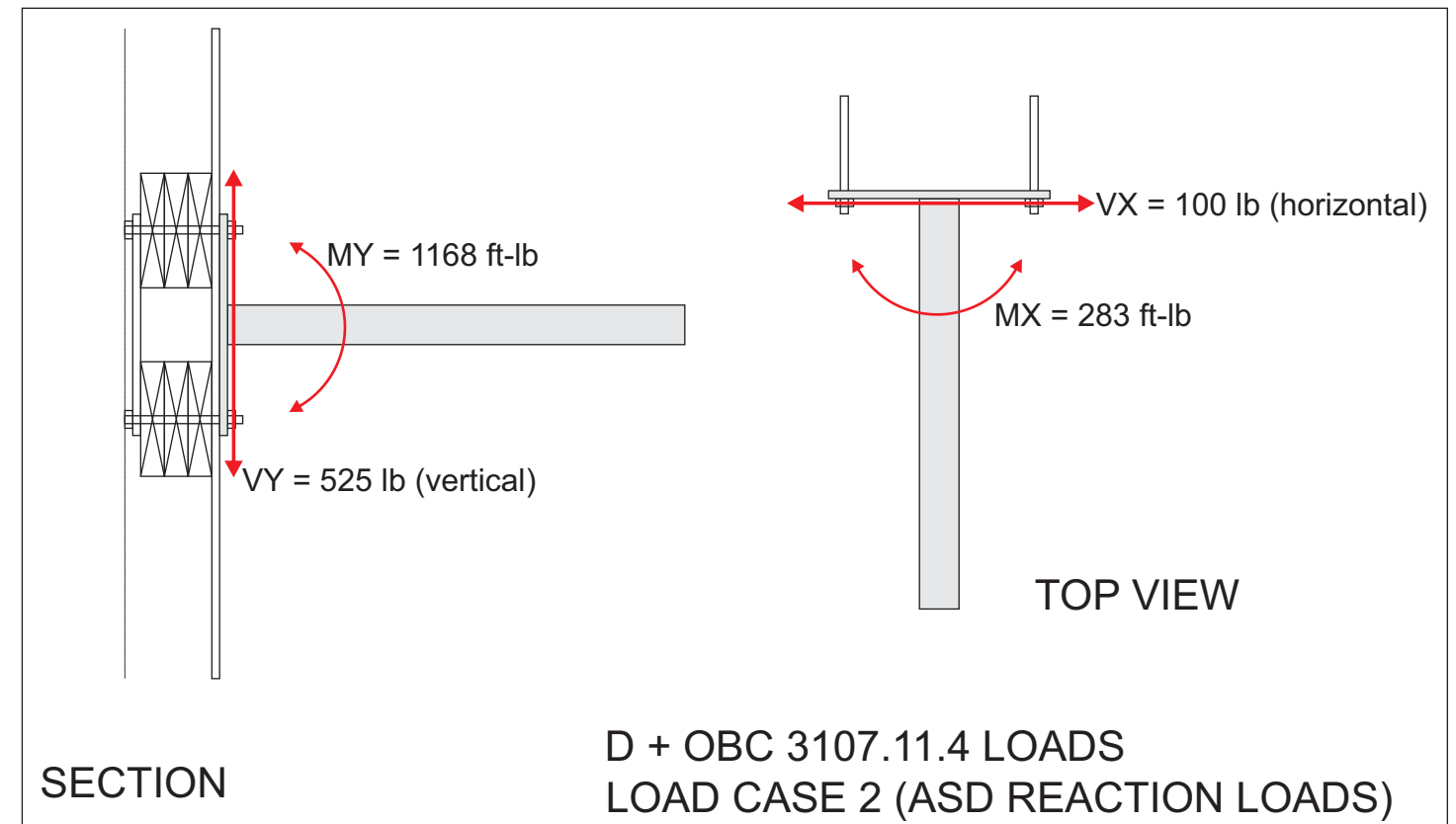
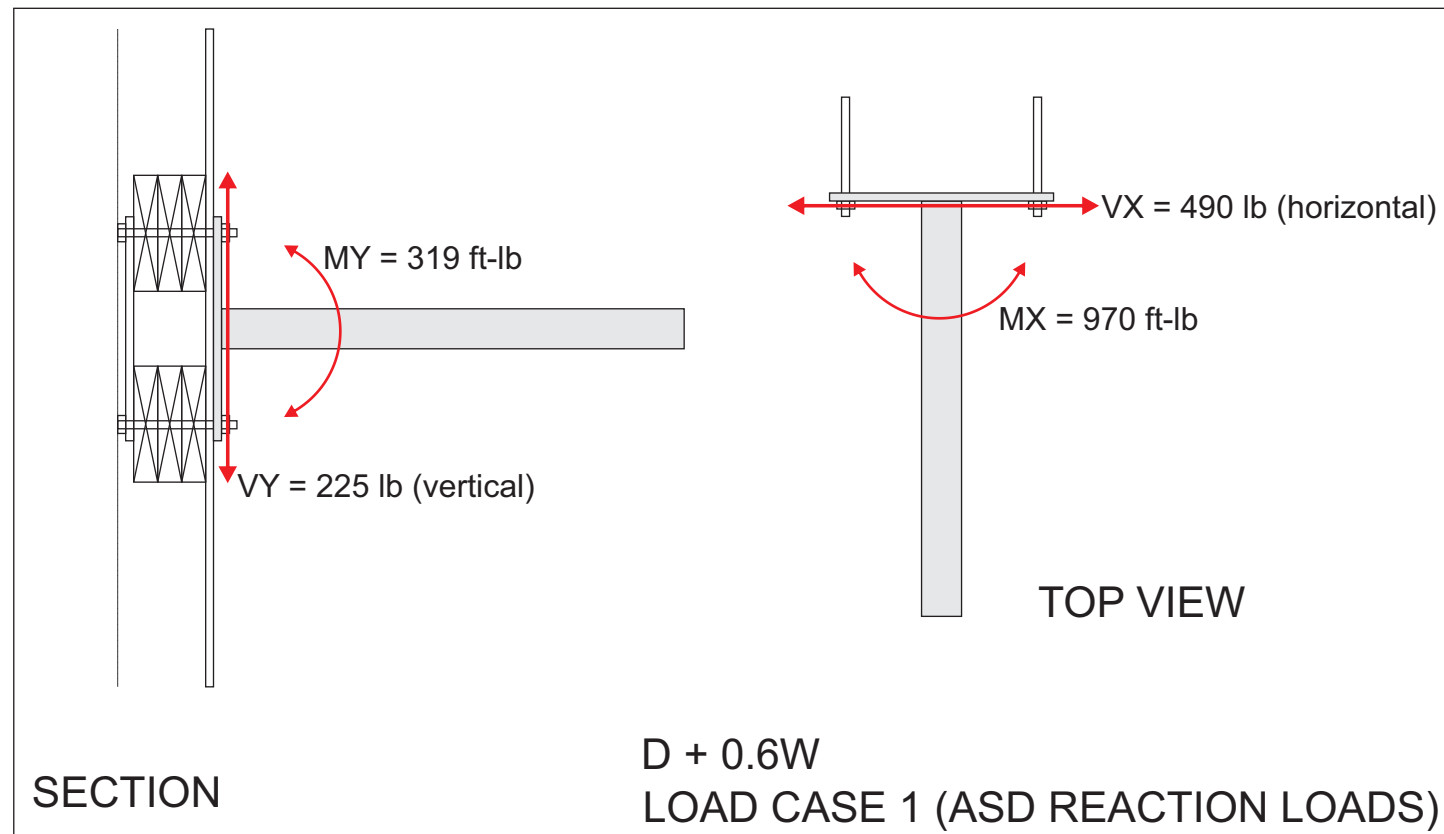
BACK OF WALL



OUTSIDE OF WALL



SECTION



4 Ground Sign



East Elevation

Ground signage



Crawford Hoying Provided Rendering



CLIENT | Crawford Hoying - The Bailey

LOCATION | Dublin, OH

SAVED AS |  
Crawford\_Hoying\_The\_Bailey

DATE | 8/10/23

REVISIONS | 10/25/23

SALESMAN | Adam Kessler

DESIGNER | Jared Faber

SALESMAN INITIAL OF APPROVAL |

X \_\_\_\_\_

- GLOSS       SATIN
- SEMI-GLOSS       FLAT

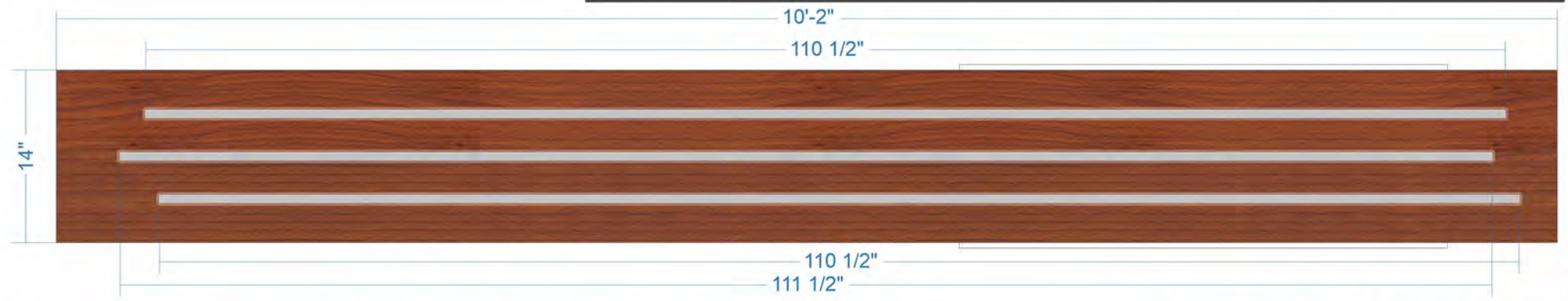
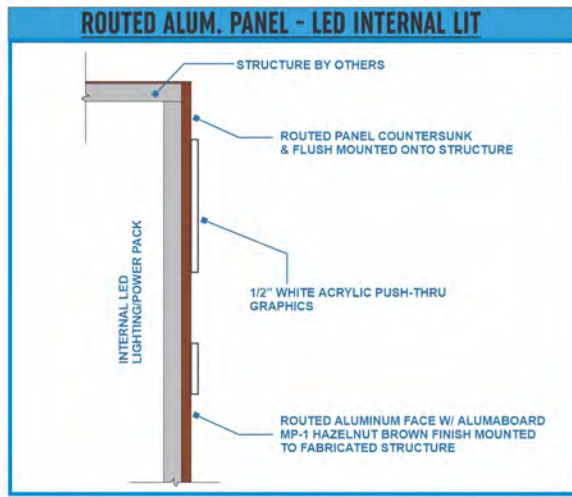
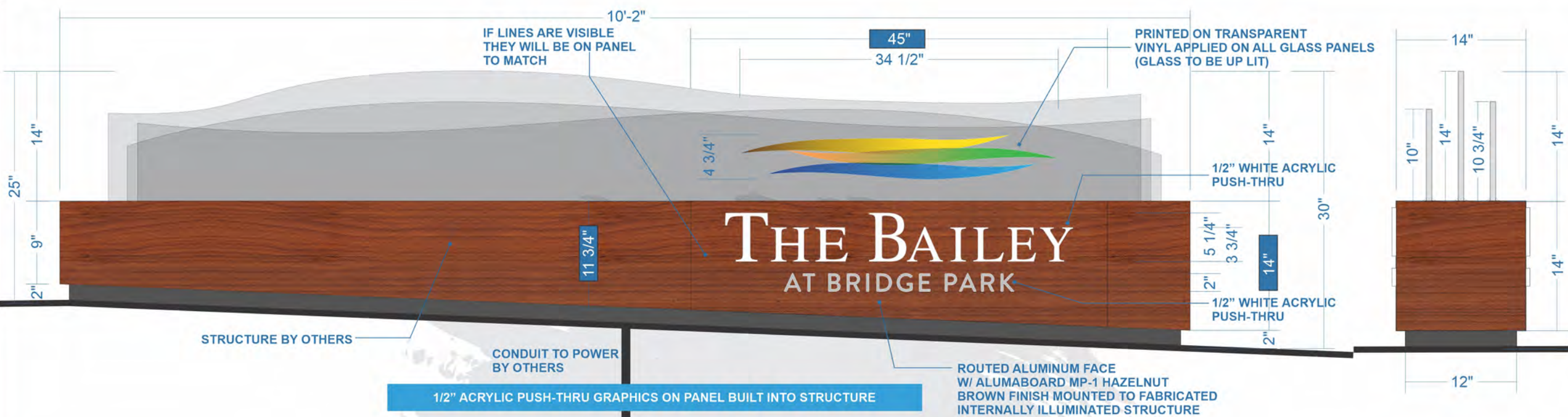


CIRCUITS   1-20AMP	5
VOLTAGE   120V	3
DRAW   5AMP MAX	3

ALL CONCEPTS, DESIGNS, AND PLANS REPRESENTED BY THIS DOCUMENT ARE THE PROPERTY OF THE KESSLER DESIGN GROUP AND ARE FOR THE USE ON THE PROJECT SPECIFIED IN THIS DOCUMENT.

COPYRIGHT 2023 BY KESSLER DESIGN GROUP  
ALL RIGHTS RESERVED

2669 NATIONAL ROAD  
P.O. BOX 0785  
ZANESVILLE, OHIO 43701-0785  
740-453-0668 | 1-800-686-1870



**NEW D/F LED ILLUMINATED ALUM. PANEL W/ ROUTED GRAPHICS & ACRYLIC PUSH-THRU ATTACHED TO MONUMENT SIGN**  
**NEW FABRICATED ALUM. TOP W/ LED UP-LIT CUSTOM GLASS PANELS & TRANSPARENT VINYL LOGO ATTACHED TO MONUMENT SIGN**

SCALE: 1/2" = 1'

	PANTONE 428	ALUMA BOARD MP-1	WHITE ACRYLIC
DIGITAL PRINT	ORACAL TRANS. 8500-072 LIGHT GREY	MATCH HAZELNUT BROWN	



CLIENT | Crawford Hoying - The Bailey

LOCATION | Dublin, OH

SAVED AS |

Crawford\_Hoying\_The\_Bailey

DATE | 8/10/23

REVISIONS | 10/25/23

SALESMAN | Adam Kessler

DESIGNER | Jared Faber

SALESMAN INITIAL OF APPROVAL |

X

- |                                     |                                |
|-------------------------------------|--------------------------------|
| <input type="checkbox"/> GLOSS      | <input type="checkbox"/> SATIN |
| <input type="checkbox"/> SEMI-GLOSS | <input type="checkbox"/> FLAT  |

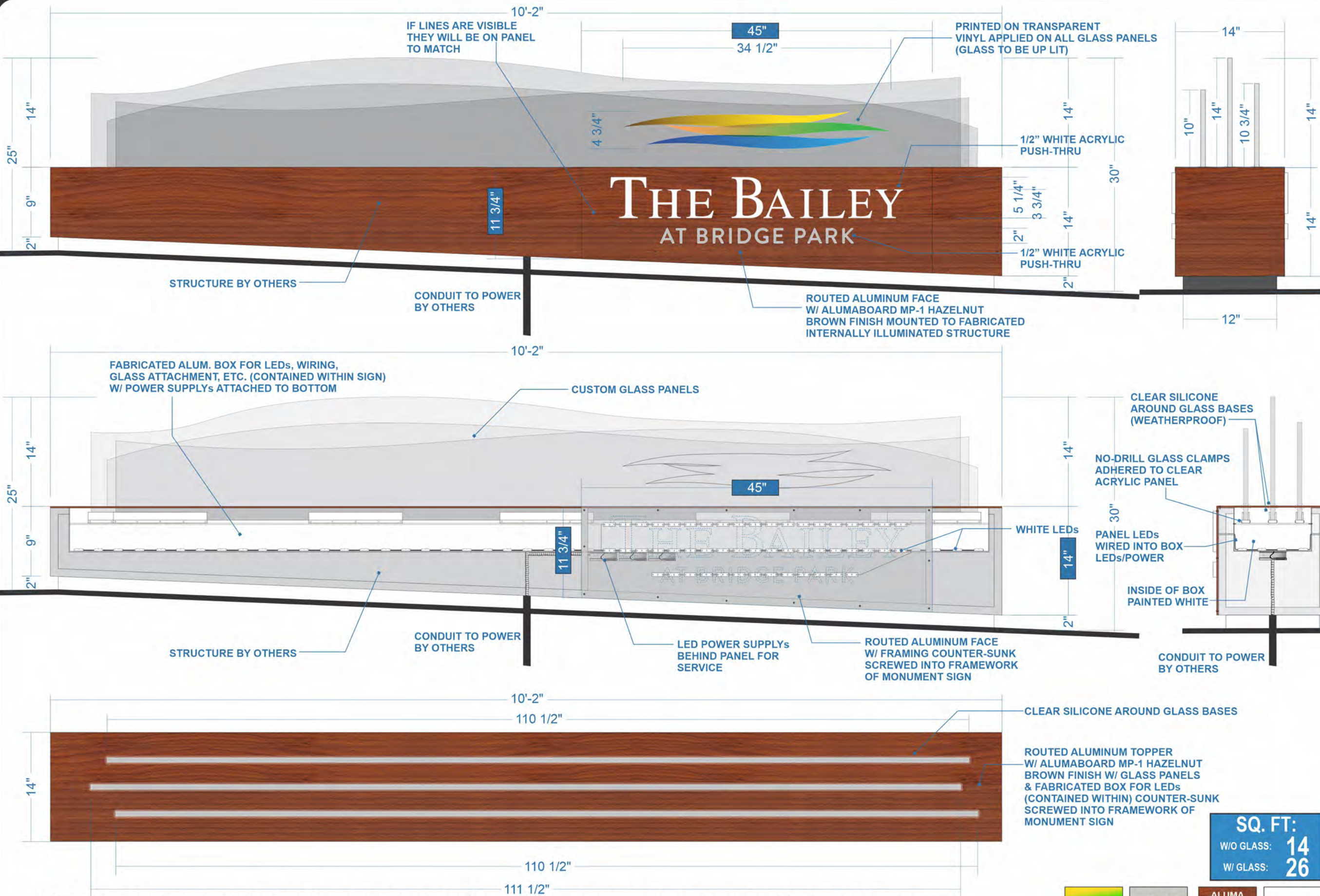


CIRCUITS   1-20AMP	5
VOLTAGE   120V	3
DRAW   5AMP MAX	3

ALL CONCEPTS, DESIGNS, AND PLANS REPRESENTED BY THIS DOCUMENT ARE THE PROPERTY OF THE KESSLER DESIGN GROUP AND ARE FOR THE USE ON THE PROJECT SPECIFIED IN THIS DOCUMENT.

COPYRIGHT 2023 BY KESSLER DESIGN GROUP ALL RIGHTS RESERVED

2669 NATIONAL ROAD  
P.O. BOX 0785  
ZANESVILLE, OHIO 43701-0785  
740-453-0668 | 1-800-686-1870



**NEW D/F LED ILLUMINATED ALUM. PANEL W/ ROUTED GRAPHICS & ACRYLIC PUSH-THRU ATTACHED TO MONUMENT SIGN**  
**NEW FABRICATED ALUM. TOP W/ LED UP-LIT CUSTOM GLASS PANELS & TRANSPARENT VINYL LOGO ATTACHED TO MONUMENT SIGN**

SCALE: 1/2" = 1'

DIGITAL PRINT	PANTONE 428 ORACAL TRANS. 8500-072 LIGHT GREY	MATCH HAZELNUT BROWN	WHITE ACRYLIC

**SQ. FT:**  
W/O GLASS: 14  
W/ GLASS: 26

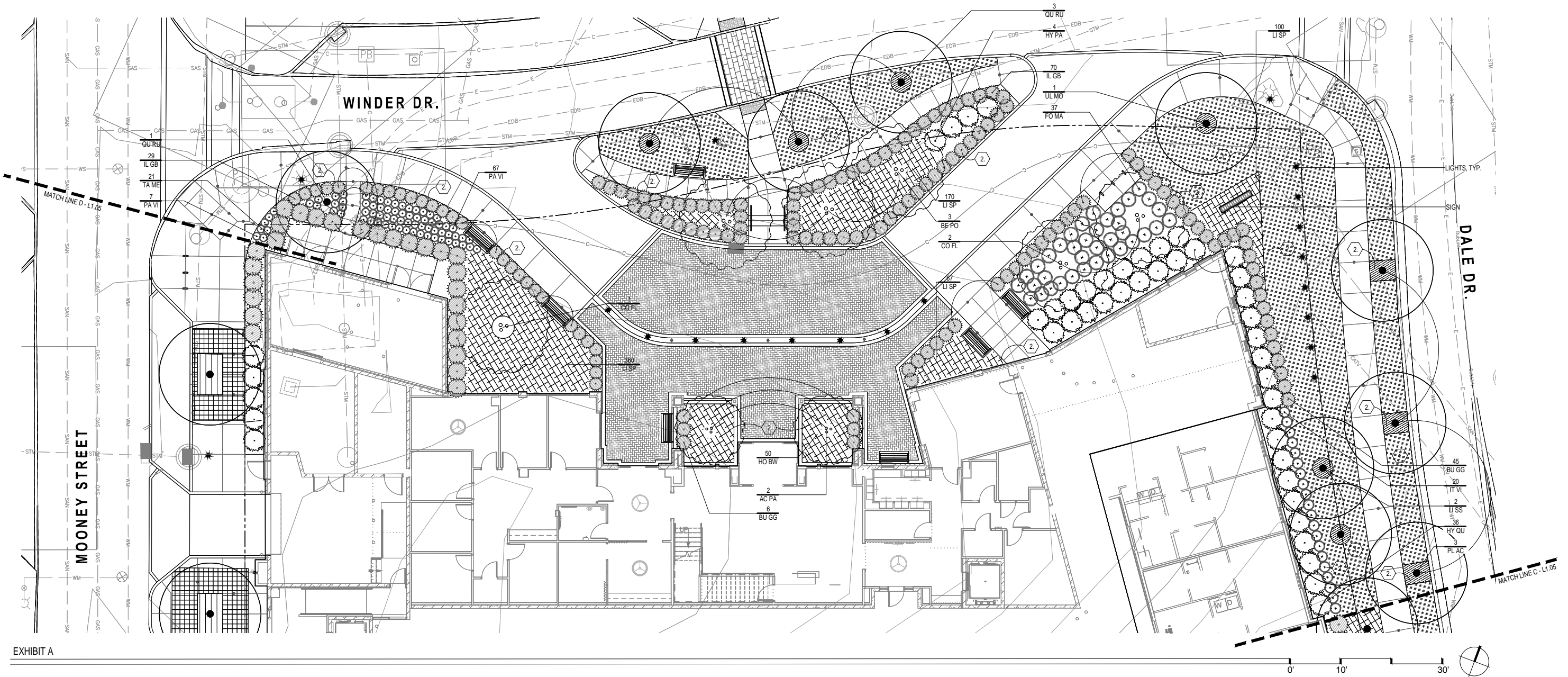


EXHIBIT A

**PLANT LIST (NOTE - ALL PLANTING AREAS ARE TO BE IRRIGATED)**

CODE	BOT. NAME/COMMON NAME	SIZE	COND.	SPACING	NOTES	CODE	BOT. NAME/COMMON NAME	SIZE	COND.	SPACING	NOTES
<b>DECIDUOUS TREES</b>											
QU RU	Quercus Rubra Red Oak	2.5' CAL.	B+B	PER PLAN	MATCH FORM	BU GG	Buxus x 'Green Gem' Green Gem Boxwood	18' HT.	#3 CONT.	PER PLAN	-
LI SS	Liquidambar styraciflua 'Slender Silhouette' Slender Silhouette Sweetgum	2.5' CAL.	B+B	PER PLAN	MATCH FORM	TA ME	Taxus x media 'Hicksii' Hicks' Yew	30' HT.	B+B OR #5 CONT.	PER PLAN	-
PL AC	Platanus x acerifolia 'Morton Circle' Exclamation London Planetree	2.5' CAL.	B+B	PER PLAN	MATCH FORM	HY PA	Hydrangea paniculata 'Jane' Little Lime Hydrangea	30' HT.	B+B OR #5 CONT.	PER PLAN	-
UL MO	Ulmus x 'Morton' Accolade Elm	2.5' CAL.	B+B	PER PLAN	MATCH FORM	HY QU	Hydrangea quercifolia 'Snow Queen' Oakleaf Hydrangea	30' HT.	B+B OR #5 CONT.	PER PLAN	-
<b>SMALL / ORNAMENTAL TREES</b>											
BE PO	Betula populifolia 'Whitespire' Whitespire Birch	10' HT.	B+B	PER PLAN	MULTI-STEM (3 STEM MIN.)	IT VI	Itea virginica 'Little Henry' Virginia sweetspire	18' HT.	#3 CONT.	PER PLAN	-
CO FL	Cornus florida Flowering Dogwood	12' HT.	B+B	PER PLAN	MATCH FORM	FO MA	Fothergilla gardenii Dwarf Fothergilla	24' HT.	B+B OR #5 CONT.	PER PLAN	-
AC PA	Acer palmatum 'Ryugu' Ryugu Japanese Maple	12' HT.	B+B	PER PLAN	MATCH FORM	IL GB	Ilex glabra 'Gem Box' Gem Box Inkberry	18' HT.	#3 CONT.	PER PLAN	-
<b>GRASSES, GROUNDCOVERS, &amp; VINES</b>											
LI SP	Lilipoe muscari 'Variegata' Variegated Lily Turf	-	-	#1 CONT.	12' O.C.	HO BW	Hosta 'Blue Wedgwood' 'Blue Wedgwood' Hosta	-	#1 CONT.	18' O.C.	-
						PA VI	Panicum virgatum 'Heavy Metal' Heavy Metal Switch Grass		#3 CONT.	PER PLANS	

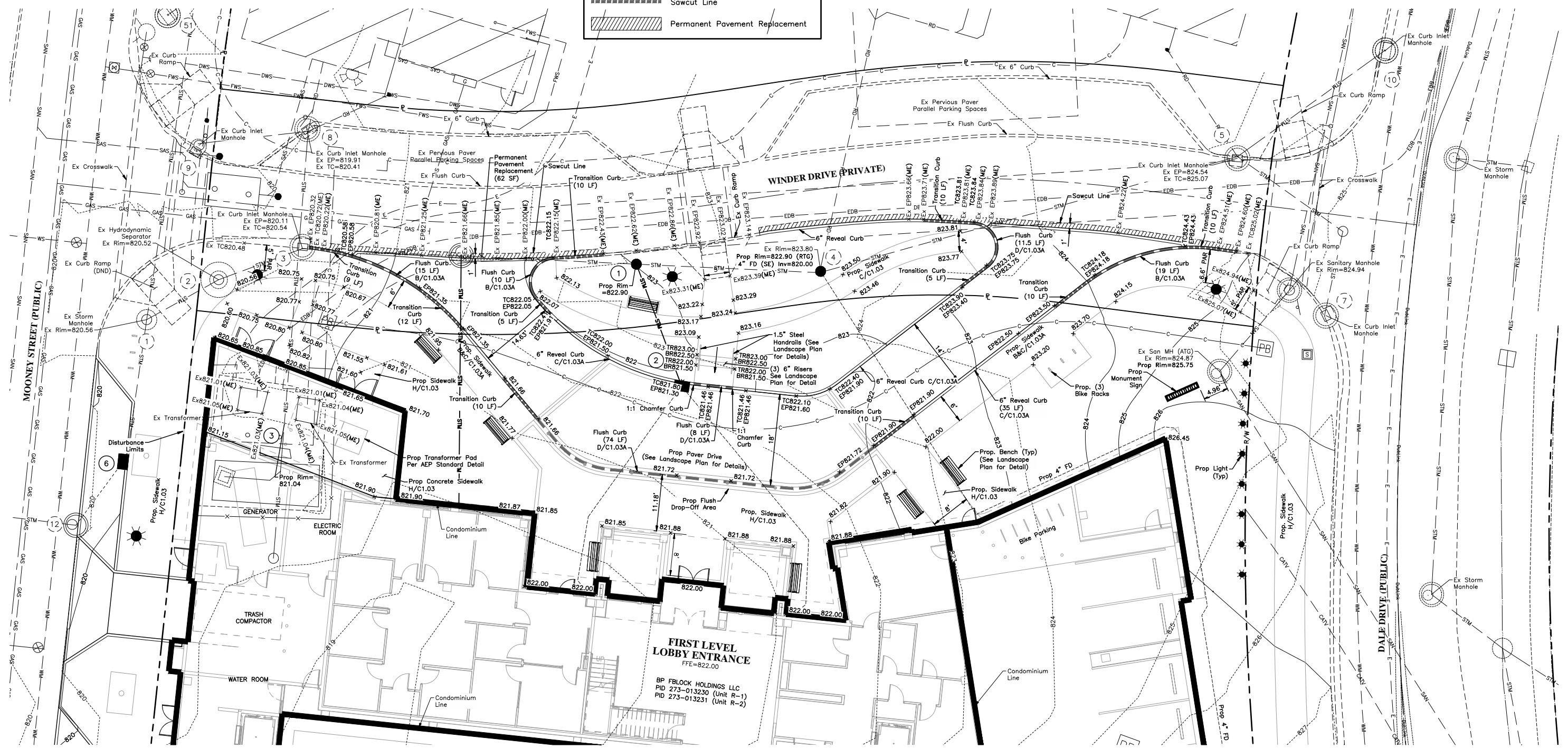
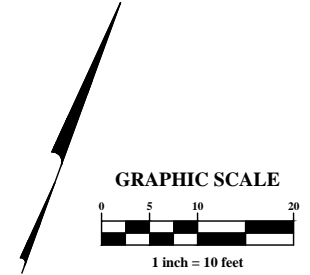
**CODED LANDSCAPE NOTES**

- ① TURF AREA - ALL TURF TO BE IRRIGATED
- ② LANDSCAPE BED - PROVIDE MIN. 3" DEPTH BLACK MULCH, POSITIVE DRAINAGE IN ALL DIRECTIONS. HAND SPADE EDGE ADJACENT TURF.

**PLAN KEY**

SYMBOL	ITEM	REFERENCE AND NOTES
	DECIDUOUS SHADE TREE	A L6.01
	FLOWERING ORNAMENTAL TREE	A L6.01
	DECIDUOUS SHRUBS	B L6.01
	EVERGREEN SHRUBS	B L6.01
	GROUND COVER	C L6.01

LEGEND	
*Ex820.00	Ex. Spot Elevation
*820.00	Prop. Spot Elevation
EP	Edge of Pavement
TC	Top of Curb
FF	Finish Floor
TR	Top of Riser
BR	Bottom of Riser
LF	Linear Foot
(ATG)	Adjust To Grade
(RTG)	Reconstruct to Grade
(ME)	Meet Existing
(DND)	Do Not Disturb
---	Flush Curb (0" Reveal)
-----	Transition Curb (0" to 6" Reveal)
-----	Sawcut Line
	Permanent Pavement Replacement



**FIRST LEVEL LOBBY ENTRANCE**  
FFE=822.00  
BP FBLOCK HOLDINGS LLC  
PID 273-013230 (Unit R-1)  
PID 273-013231 (Unit R-2)

MARK	DATE	DESCRIPTION

CITY OF DUBLIN, FRANKLIN COUNTY, OHIO  
PRELIMINARY & FINAL DEVELOPMENT PLAN  
**BRIDGE PARK FOR**  
**BLOCK F**  
**WINDER DRIVE ENTRANCE - GRADING DETAIL**



DATE	May 1, 2023
SCALE	1" = 10'
JOB NO.	2021-0553
SHEET	C1.09

J:\20210553\Drawings\4Sheets\Exhibits\Monument\_Sign\20210553\_PSP\_Winder\_Drive\_Entrance - Grading Detail.dwg, Last Saved By: wilson, 12/28/2023 11:45 AM, Last Printed By: Wilson, Sarah, 12/28/2023 11:46 AM (No Xrefs)