

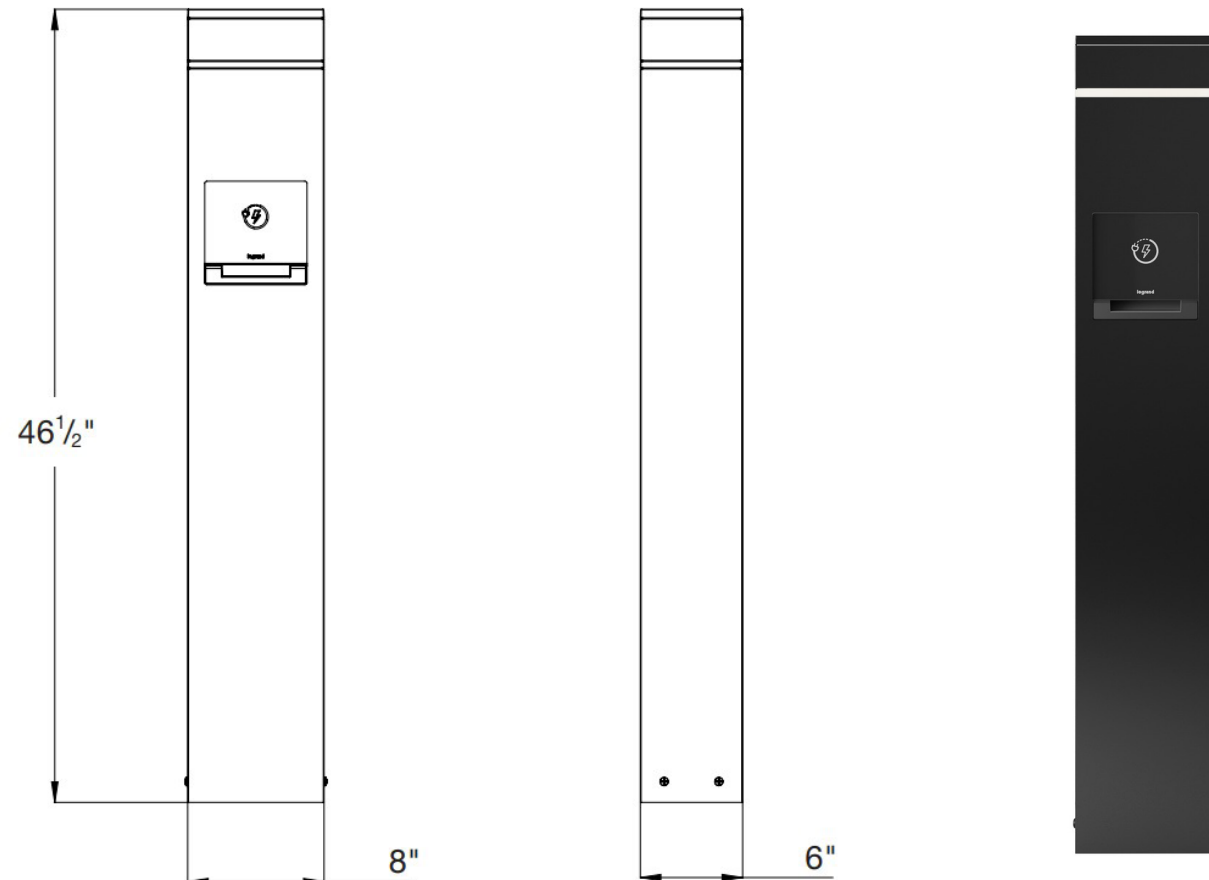
Historic Dublin E-Bike Charging Station

Legrand Charging Station with Accent Light

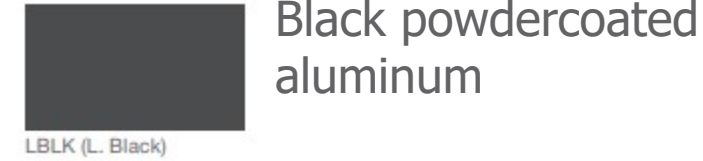
Project Narrative

The Historic Dublin E-Bike Charging Stations provides a publicly-accessible point to charge electric bikes and other mobility devices. The charging station features a LED accent light to enable device charging during the day and after dark. The accent light ensures the station stands out from standard bollards in the Historic District and clearly indicates charging. This station includes a 3-gang, two duplex GFCI receptacles and one 4-port USB outlet. Staff proposes the charging station exterior as a black powder coated aluminum.

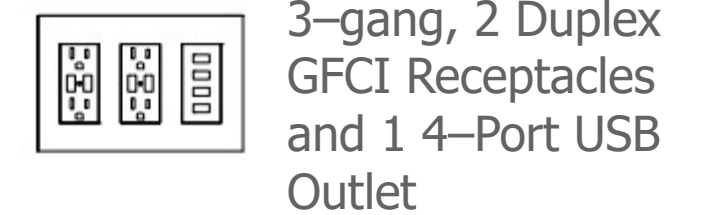
Elevations



Material & Colors



Power Module



Supplemental Images



Historic Dublin E-Bike Charging Station

Legrand Charging Station with Accent Light

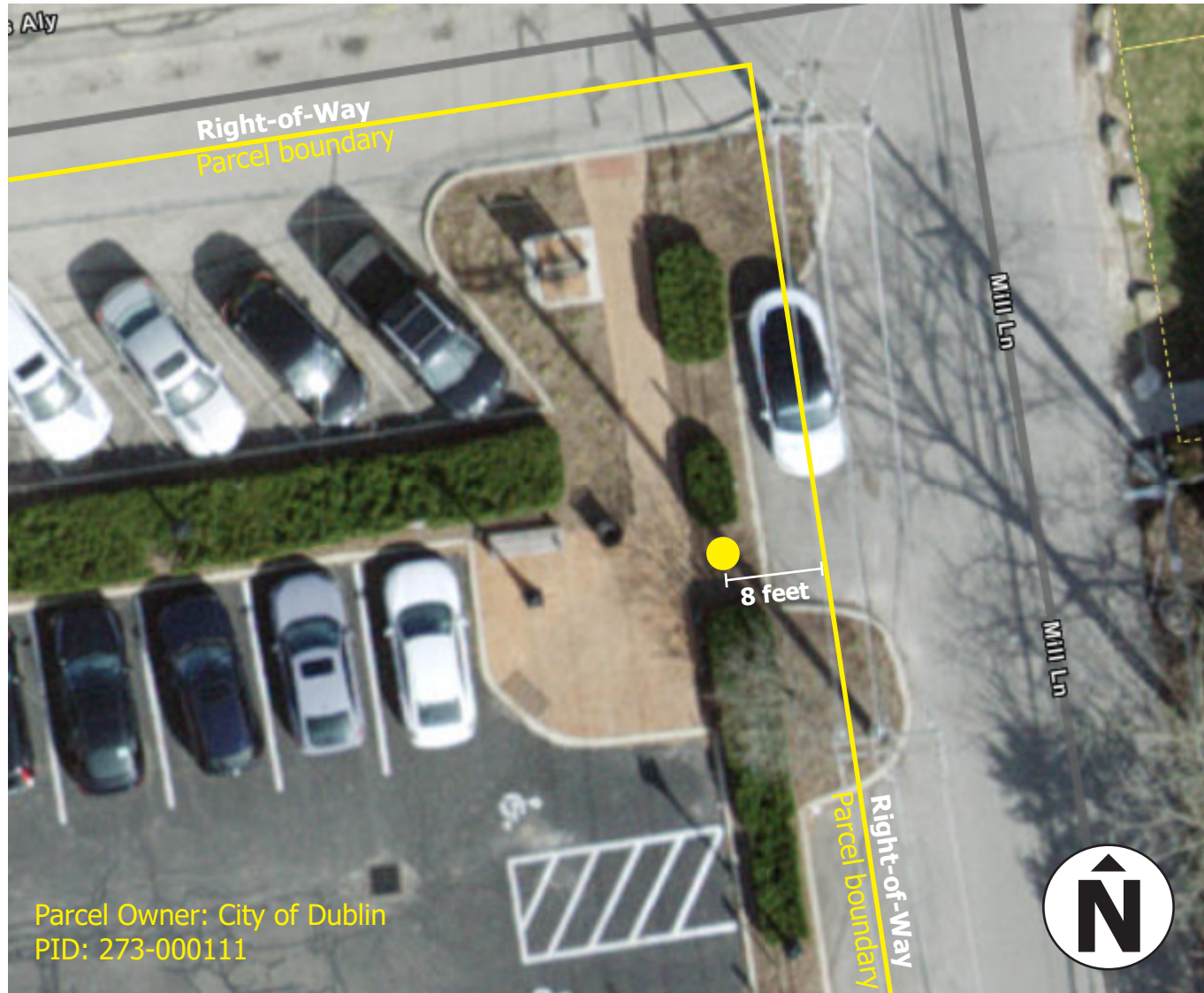
Historic Dublin



Historic Dublin E-Bike Charging Station

Legrand Charging Station with Accent Light

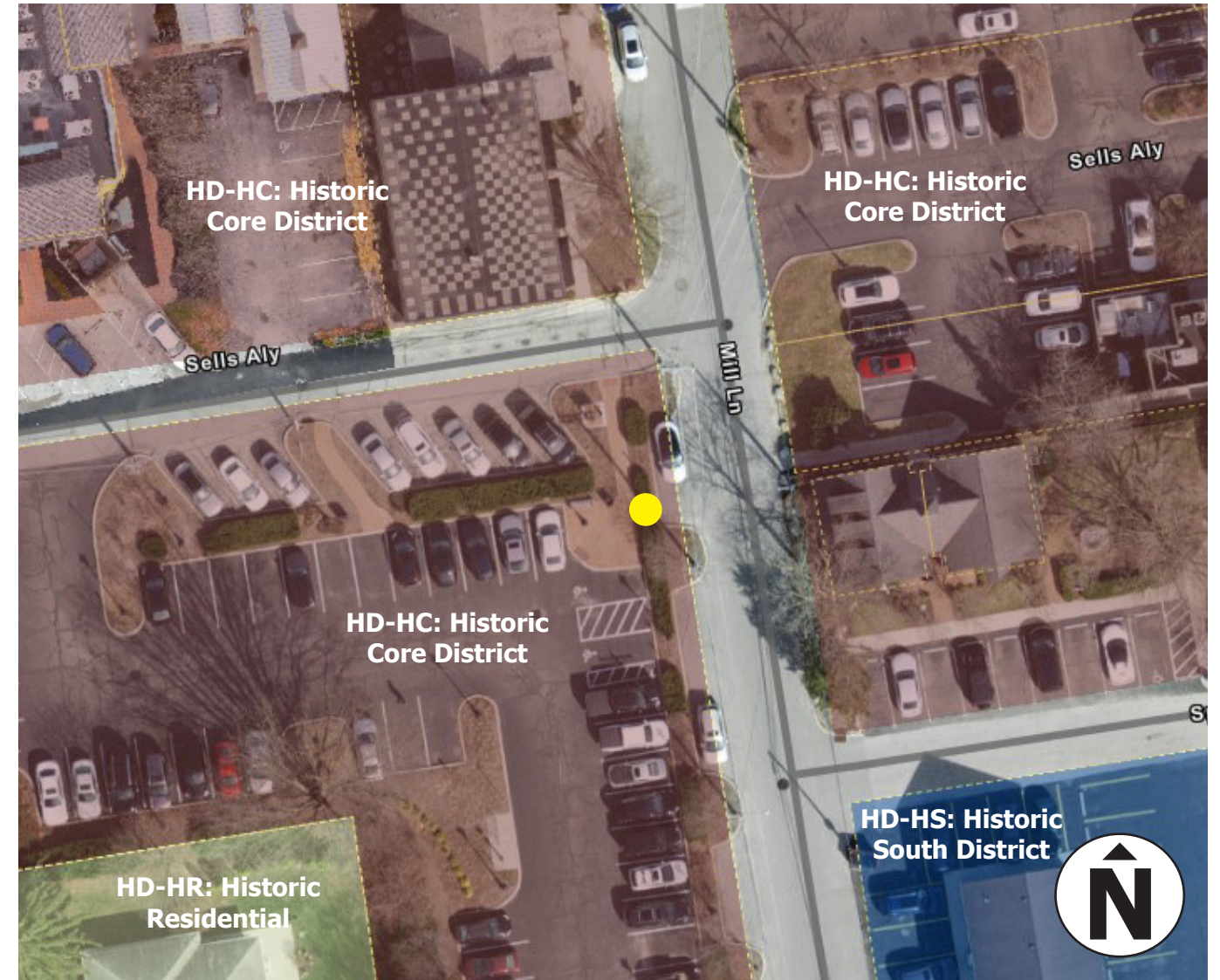
Site Details



Compliance

The design complies with ADA guidelines and is UL Listed to meet NEMA 3R requirements for use in outdoor locations.

Zoning Map

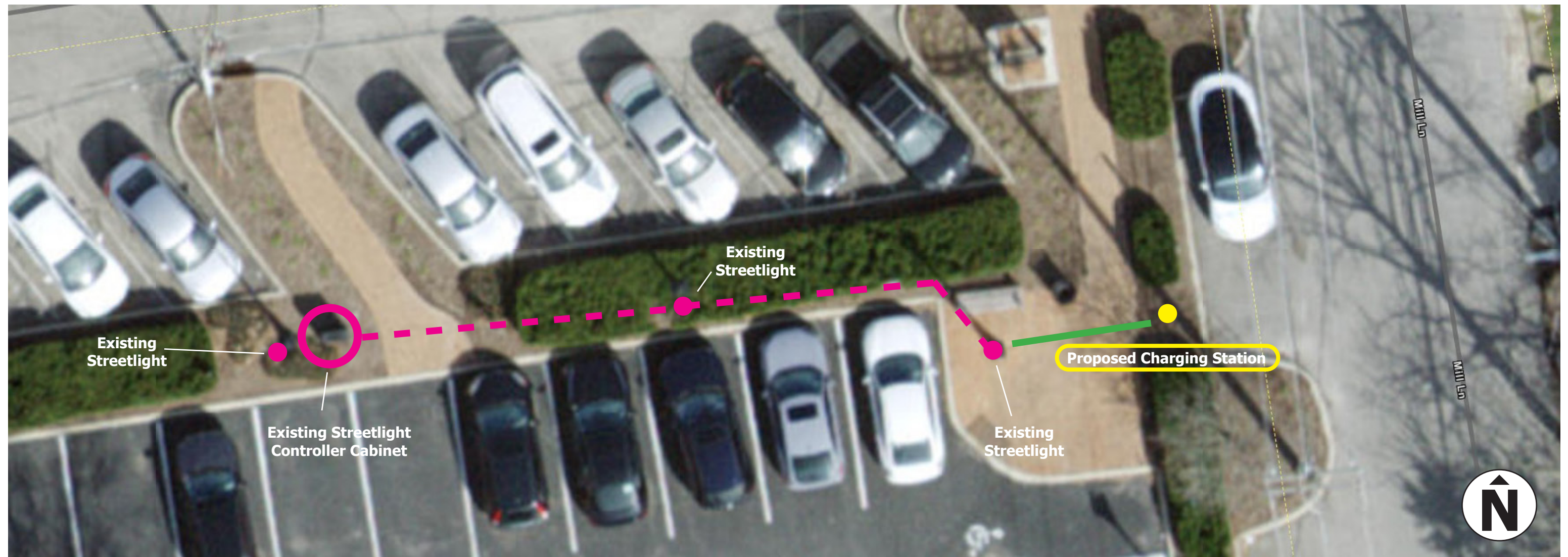


Zoning Details

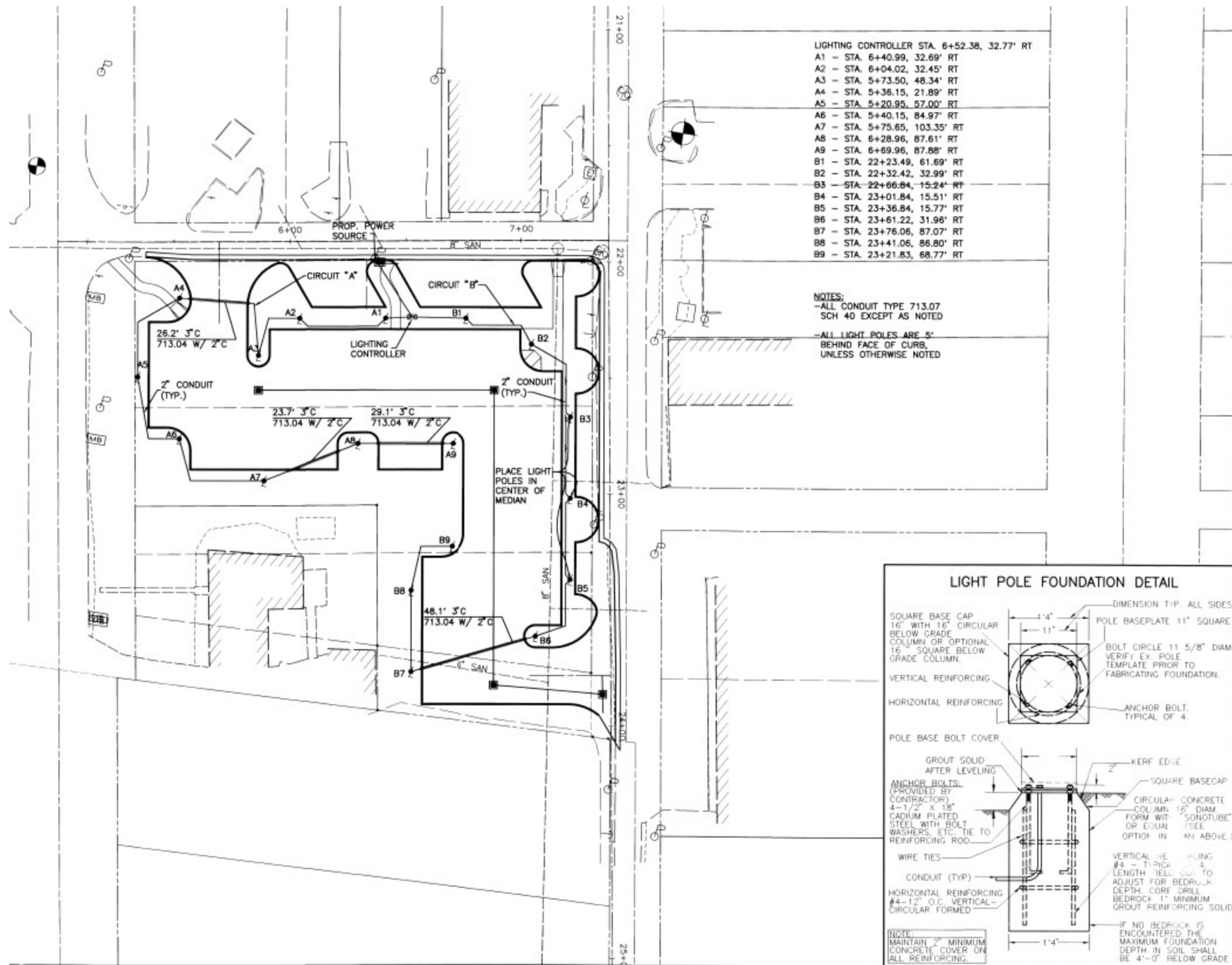
The proposed E-bike charging station is located in a City-owned parking lot zoned HD-HC: Historic Core District. The parcels to the north and east are also zoned HD-HC: Historic Core District.

Installation Details

The City's electric crew will pull electric power from a nearby streetlight controller cabinet where there is ample capacity to power the proposed e-bike charging station. The electric line will be housed in the existing raceway for the streetlights (shown as a **dotted magenta line** below). A 2-inch conduit will then be bored approximately 16 feet from the proposed charging station to the nearby existing streetlight (shown as a **solid green line** below). Should any complications arise during the boring process, an alternative installation plan includes the temporary removal of some of the brick pavers to install the conduit and then re-installing the brick pavers to match the existing conditions. Permanent demolition of hardscape or landscape is not part of the scope of installation.



Streetlight Conduit Plan and Light Pole Foundation Detail

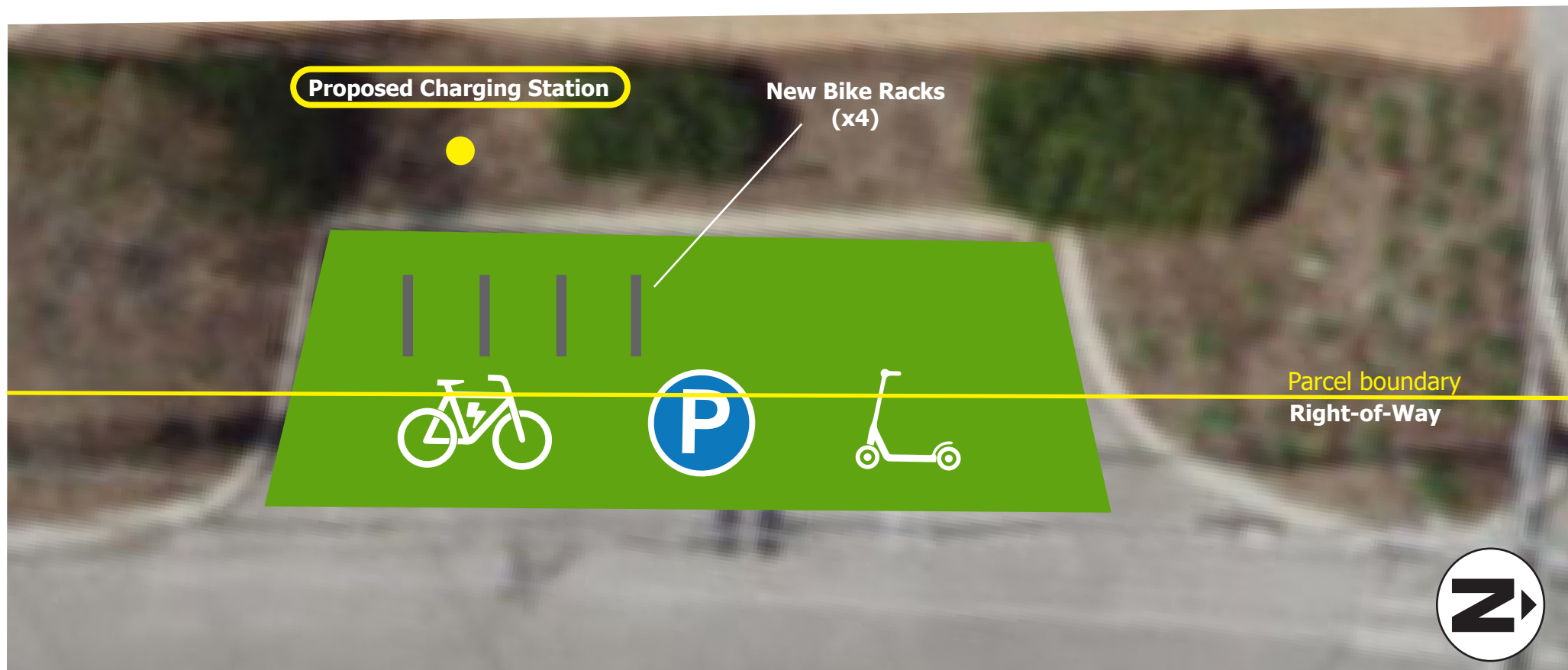


Sign and Lighting Details

An educational/informational sign will be included for the proposed e-bike charging station. The City's logo will also be incorporated onto the charging station in a white color, as shown to the right. The approximate dimensions are 3.75 inches by 4 inches, or 1.25 square feet. The e-bike charging station features an accent light band towards the top of the post. Additional lighting is not proposed.

Parking Space Conversion

The City's Division of Transportation & Mobility proposes the e-bike charging station to complement the conversion of one on-street parking space to accommodate micro-mobility vehicles such as e-bikes, e-scooters and traditional bicycles. The parking conversion includes the installation of four (4) new black bike racks, a green-colored paint application to the pavement and iconography to indicate parking for bikes and scooters.



BRIDGE ST. S.R. 161, US 33

1-19
W. BRIDGE ST.

55 S. HIGH ST.



R-1-30
EX. 6" STM

12" STM TO BE REMOVED
MILL LANE
FULL DEPTH SAWCUT

EX. 12" STM
2' MIN.

12" STM

37 W. BRIDGE ST. LLC

41 W. BRIDGE ST.

THOMAS L. BASSETT, ET.AL.

GRABILL & CO. LLC

GRABILL & CO. LLC

34-36 FRANKLIN ST.

ELIND SELLS ADDITION
P.B. 40, PG. 89

BETTY J. CASSADY
40-42
FRANKLIN ST.

VACATED
DAVIS ALLEY

56
FRANKLIN ST.

60
FRANKLIN ST.

SELLS ALLEY
FULL-DEPTH SAWCUT
EX. 12" STM
EX. 8" SAN

EX. SIGN TO BE REMOVED & REPLACED

R-59A-12
PARKING ONLY

R-59A-12
PARKING ONLY

R-59C-12
VAN ACCESSIBLE

R-59A-12
12" STM

12" STM TO BE REMOVED

2' MIN.

12" STM TO BE REMOVED

12" STM

12" STM

12" STM

12" STM

12" STM

12" STM

12" STM

12" STM

12" STM

12" STM

12" STM

12" STM

12" STM

12" STM

12" STM

12" STM

12" STM

12" STM

12" STM

12" STM

12" STM

12" STM

12" STM

12" STM

12" STM

12" STM

12" STM

12" STM

12" STM

12" STM

12" STM

12" STM

12" STM

12" STM

12" STM

12" STM

12" STM

12" STM

12" STM

12" STM

12" STM

12" STM

12" STM

12" STM

12" STM

12" STM

12" STM

12" STM

12" STM

12" STM

12" STM

12" STM

12" STM

12" STM

12" STM

12" STM

12" STM

12" STM

12" STM

12" STM

12" STM

12" STM

12" STM

12" STM

12" STM

12" STM

12" STM

12" STM

12" STM

12" STM

12" STM

12" STM

12" STM

12" STM

12" STM

12" STM

12" STM

12" STM

12" STM

12" STM

12" STM

12" STM

12" STM

12" STM

12" STM

12" STM

12" STM

12" STM

12" STM

12" STM

12" STM

12" STM

12" STM

12" STM

12" STM

12" STM

12" STM

12" STM

12" STM

12" STM

12" STM

12" STM

12" STM

12" STM

12" STM

12" STM

12" STM

12" STM

12" STM

12" STM

12" STM

12" STM

12" STM

12" STM

12" STM

12" STM

12" STM

12" STM

12" STM

12" STM

12" STM

12" STM

12" STM

12" STM

12" STM

12" STM

12" STM

12" STM

12" STM

12" STM

12" STM

12" STM

12" STM

12" STM

12" STM

12" STM

12" STM

12" STM

12" STM

12" STM

12" STM

12" STM

12" STM

12" STM

12" STM

12" STM

12" STM

12" STM

12" STM

12" STM

12" STM

12" STM

12" STM

12" STM

12" STM

12" STM

12" STM

CAUTION
EX. UTILITY

CAUTION
EX. UTILITY

CIVIC ADDITION
P.B. 21, PG. 27

KATHRYN H. HAYDOCY

56
FRANKLIN ST.

60
FRANKLIN ST.

Ⓢ CONTRACTOR Ⓣ FIELD VERIFY
EX. 6" SANITARY SEWER
CONFLICTING W/ PROPOSED
12" STM.

CALCULATED