

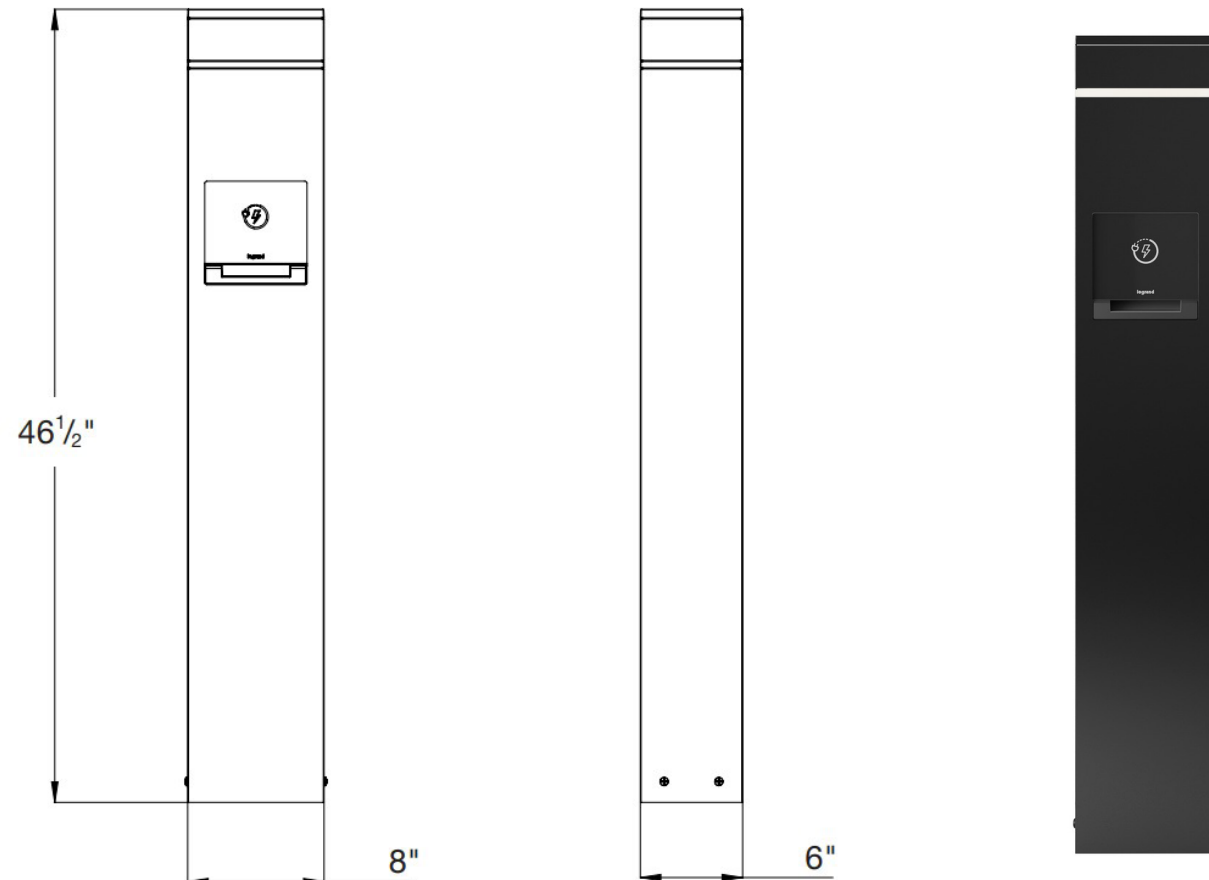
# Historic Dublin E-Bike Charging Station

Legrand Charging Station with Accent Light

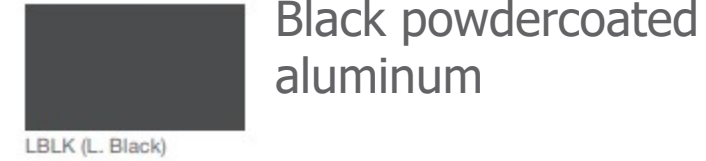
## Project Narrative

The Historic Dublin E-Bike Charging Stations provides a publicly-accessible point to charge electric bikes and other mobility devices. The charging station features a LED accent light to enable device charging during the day and after dark. The accent light ensures the station stands out from standard bollards in the Historic District and clearly indicates charging. This station includes a 3-gang, two duplex GFCI receptacles and one 4-port USB outlet. Staff proposes the charging station exterior as a black powder coated aluminum.

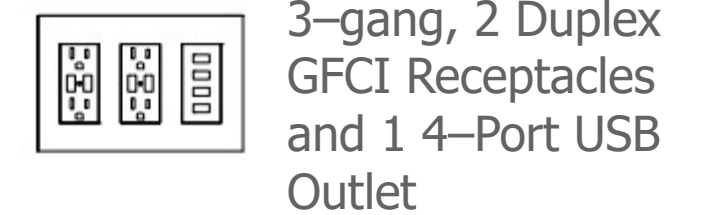
## Elevations



## Material & Colors



## Power Module



## Supplemental Images



# Historic Dublin E-Bike Charging Station

Legrand Charging Station with Accent Light

## Historic Dublin

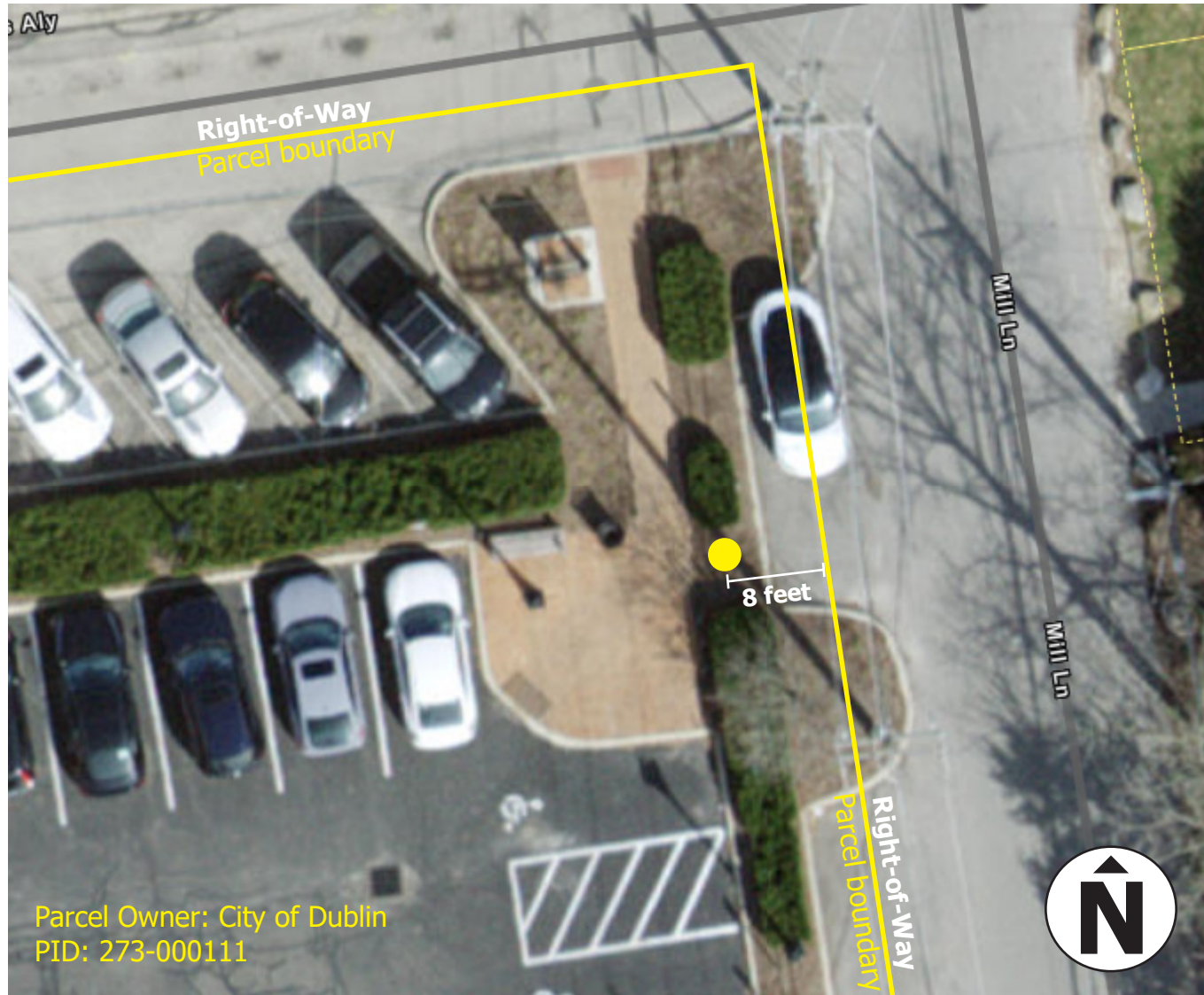




# Historic Dublin E-Bike Charging Station

Legrand Charging Station with Accent Light

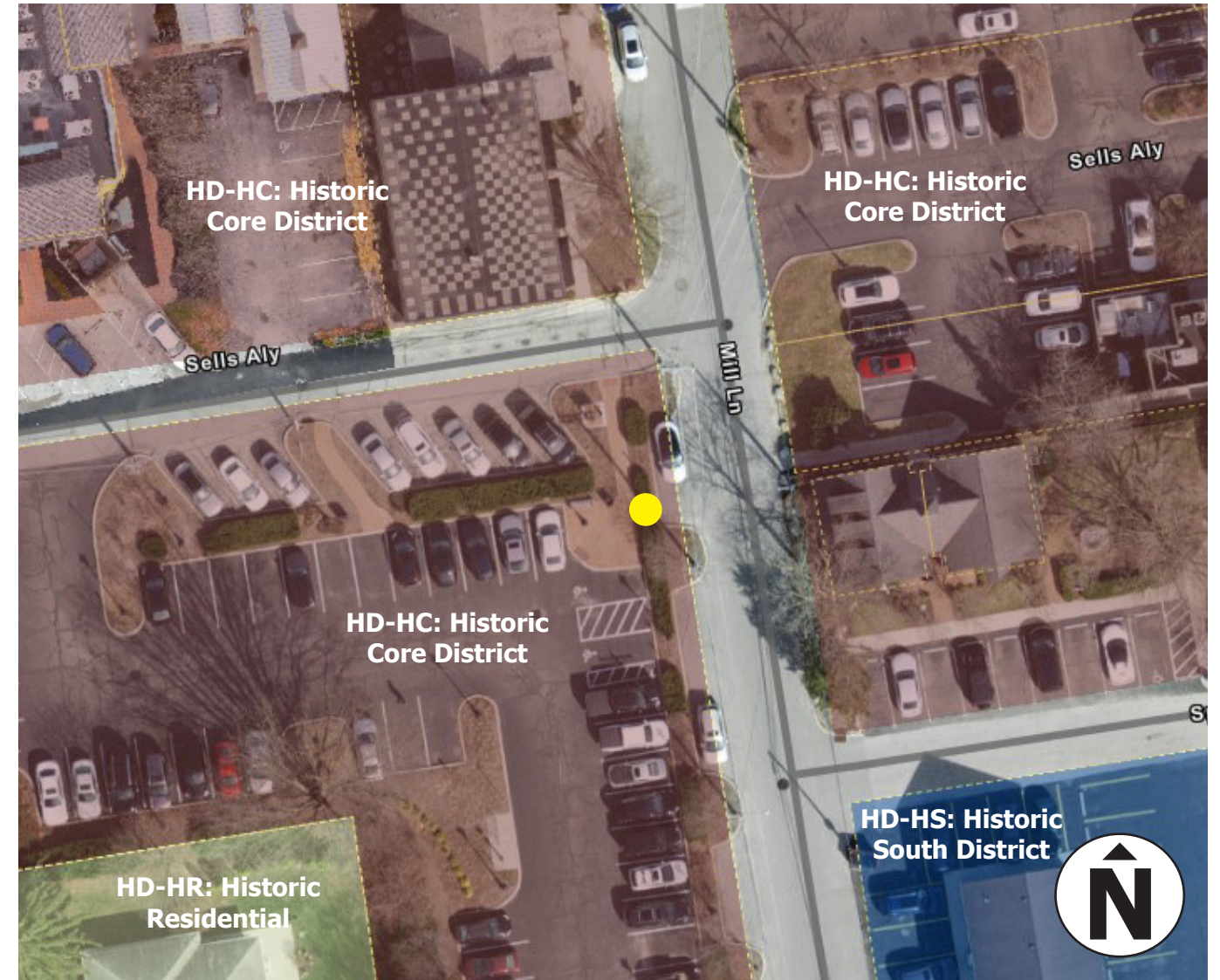
## Site Details



## Compliance

The design complies with ADA guidelines and is UL Listed to meet NEMA 3R requirements for use in outdoor locations.

## Zoning Map



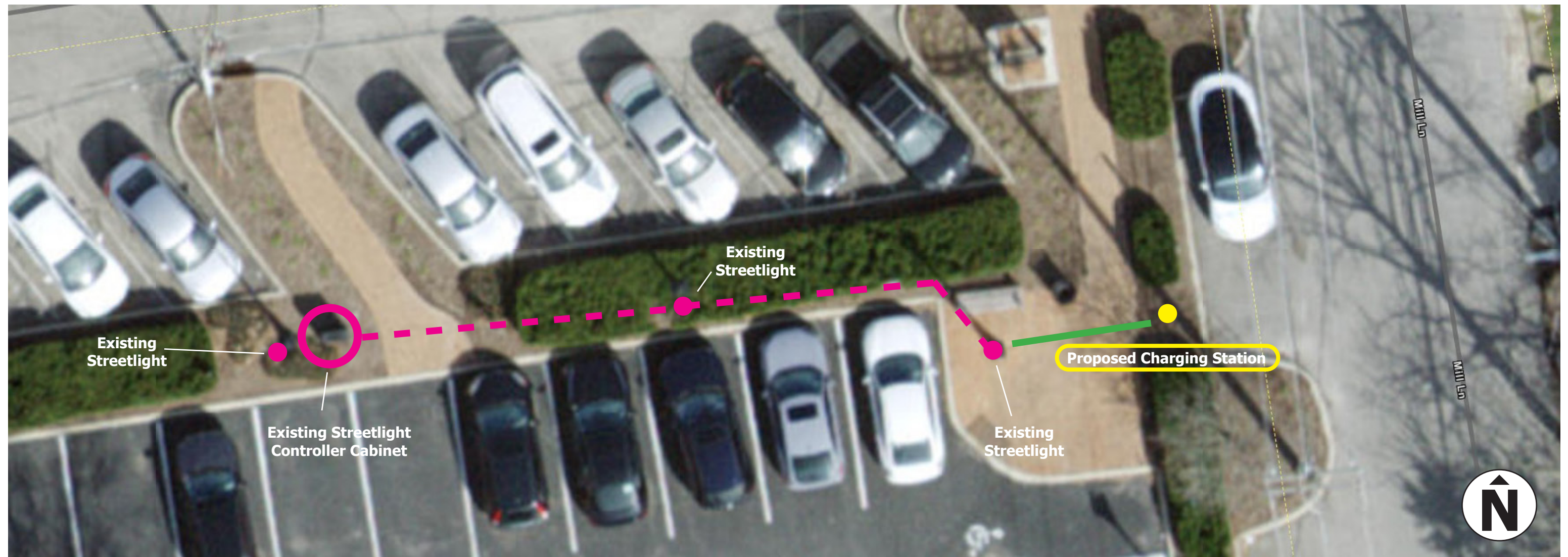
## Zoning Details

The proposed E-bike charging station is located in a City-owned parking lot zoned HD-HC: Historic Core District. The parcels to the north and east are also zoned HD-HC: Historic Core District.



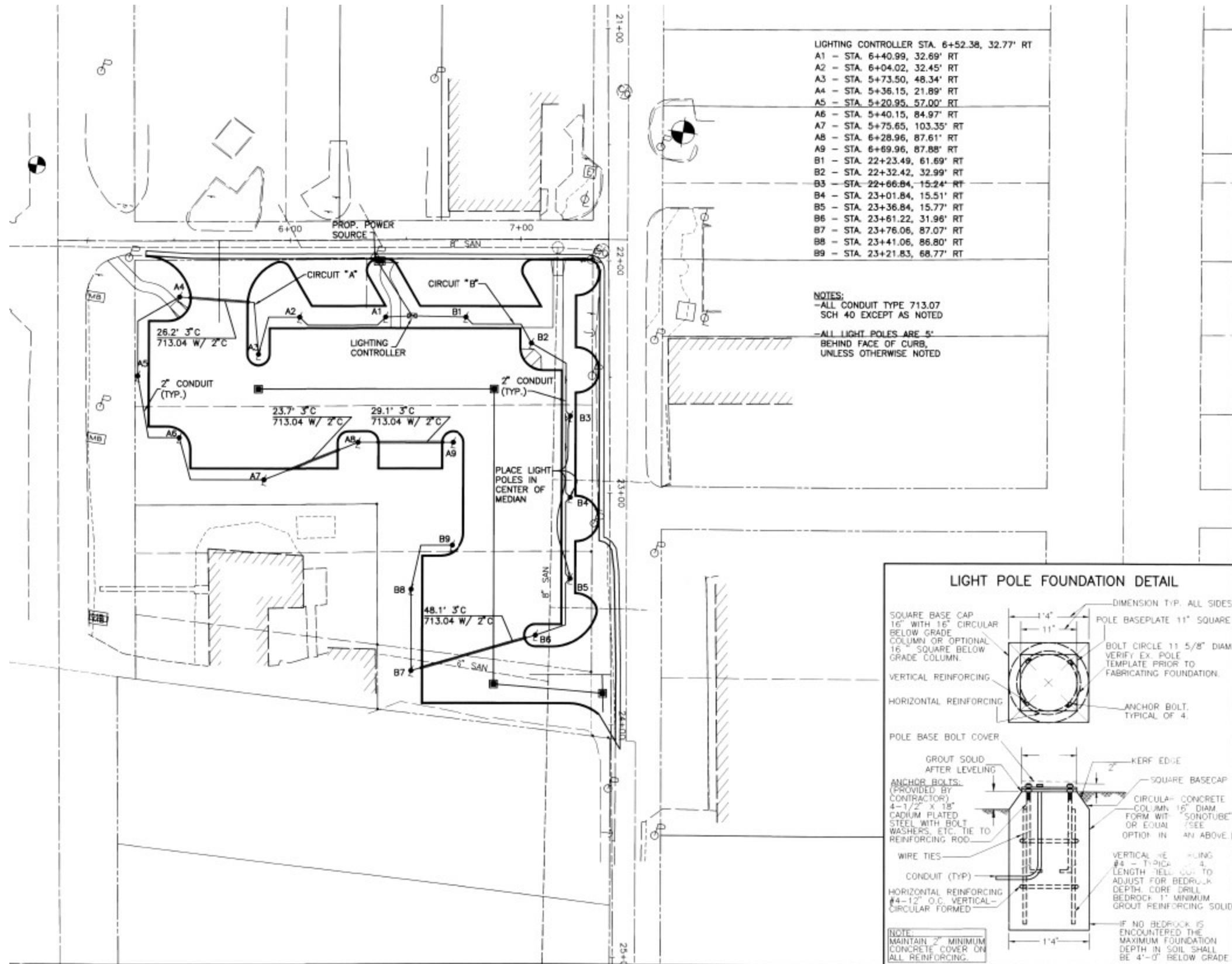
## Installation Details

The City's electric crew will pull electric power from a nearby streetlight controller cabinet where there is ample capacity to power the proposed e-bike charging station. The electric line will be housed in the existing raceway for the streetlights (shown as a **dotted magenta line** below). A 2-inch conduit will then be bored approximately 16 feet from the proposed charging station to the nearby existing streetlight (shown as a **solid green line** below). Should any complications arise during the boring process, an alternative installation plan includes the temporary removal of some of the brick pavers to install the conduit and then re-installing the brick pavers to match the existing conditions. Permanent demolition of hardscape or landscape is not part of the scope of installation.





# Streetlight Conduit Plan and Light Pole Foundation Detail



## Sign and Lighting Details

An educational/informational sign will be included for the proposed e-bike charging station. The City's logo will also be incorporated onto the charging station in a white color, as shown to the right. The e-bike charging station features an accent light band towards the top of the post. Additional lighting is not proposed.



## Parking Space Conversion

The City's Division of Transportation & Mobility proposes the e-bike charging station to complement the conversion of one on-street parking space to accommodate micro-mobility vehicles such as e-bikes, e-scooters and traditional bicycles. The parking conversion includes the installation of four (4) new bike racks, a green-colored paint application to the pavement and iconography to indicate parking for bikes and scooters.

