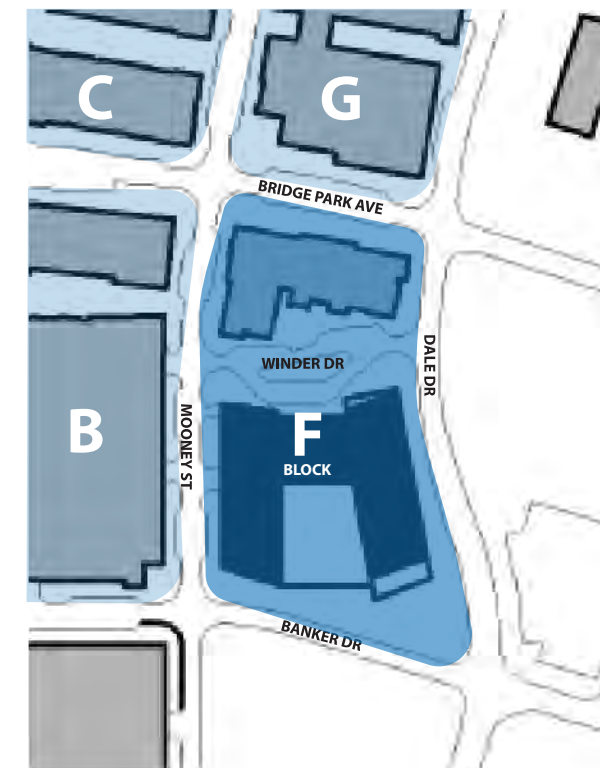
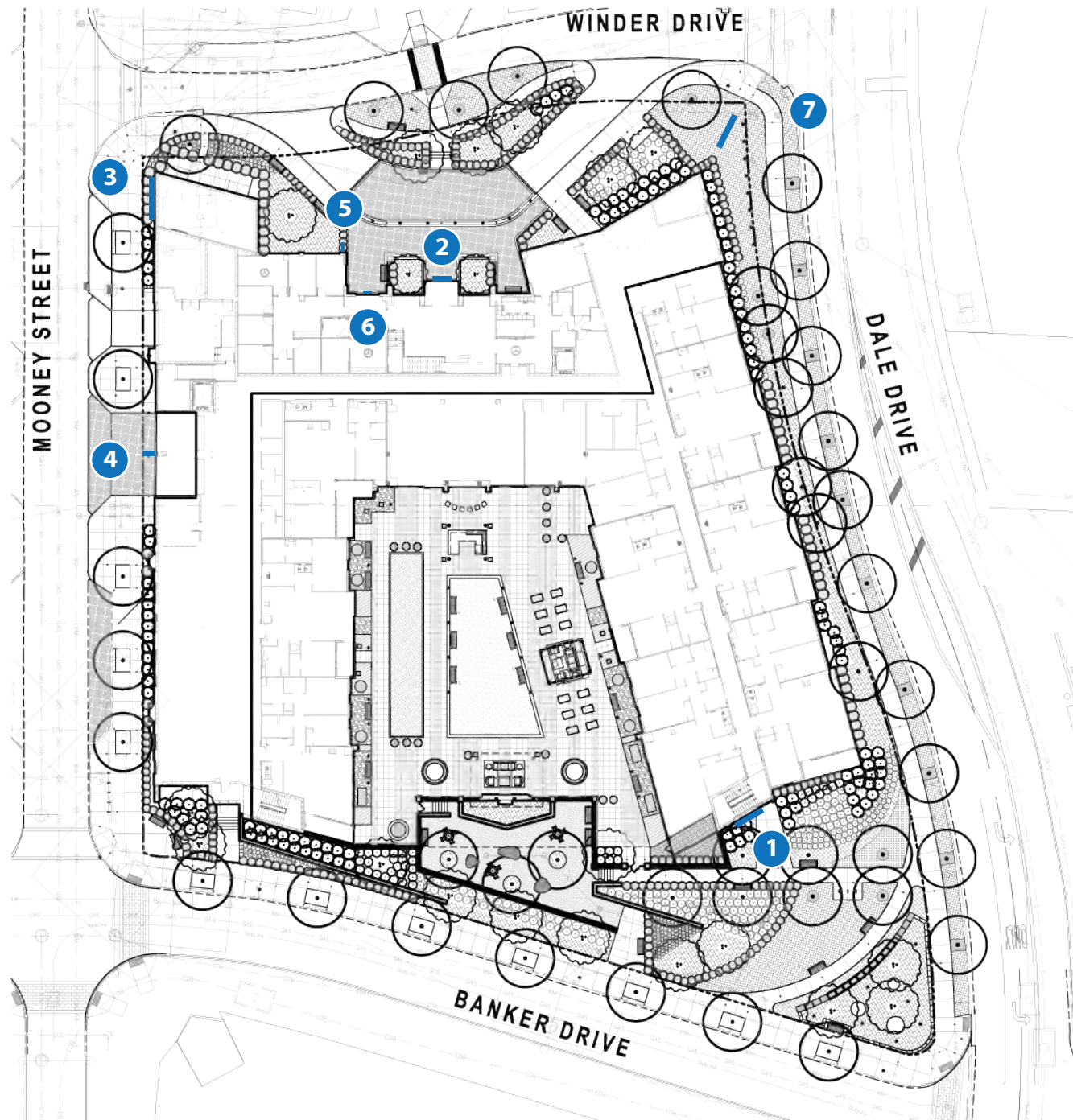


F Block - The Bailey

Exterior Signage Key



Elevations
pages 2-4, 10

Renderings
pages 5-9

1 South Fascia Sign
pages 11-13

2 North Canopy Sign
pages 14-16

3 West Fascia Sign
pages 17-19

4 Blade Sign
pages 20-25

5 Projecting Sign
pages 26-27

6 Door Sign
pages 26-27

7 Ground Sign
pages 28-30

O'Reilly Office

300 Spruce St. Suite 150
Columbus, Ohio 43215
614-754-1895



F Block - The Bailey Exterior Signage Elevation

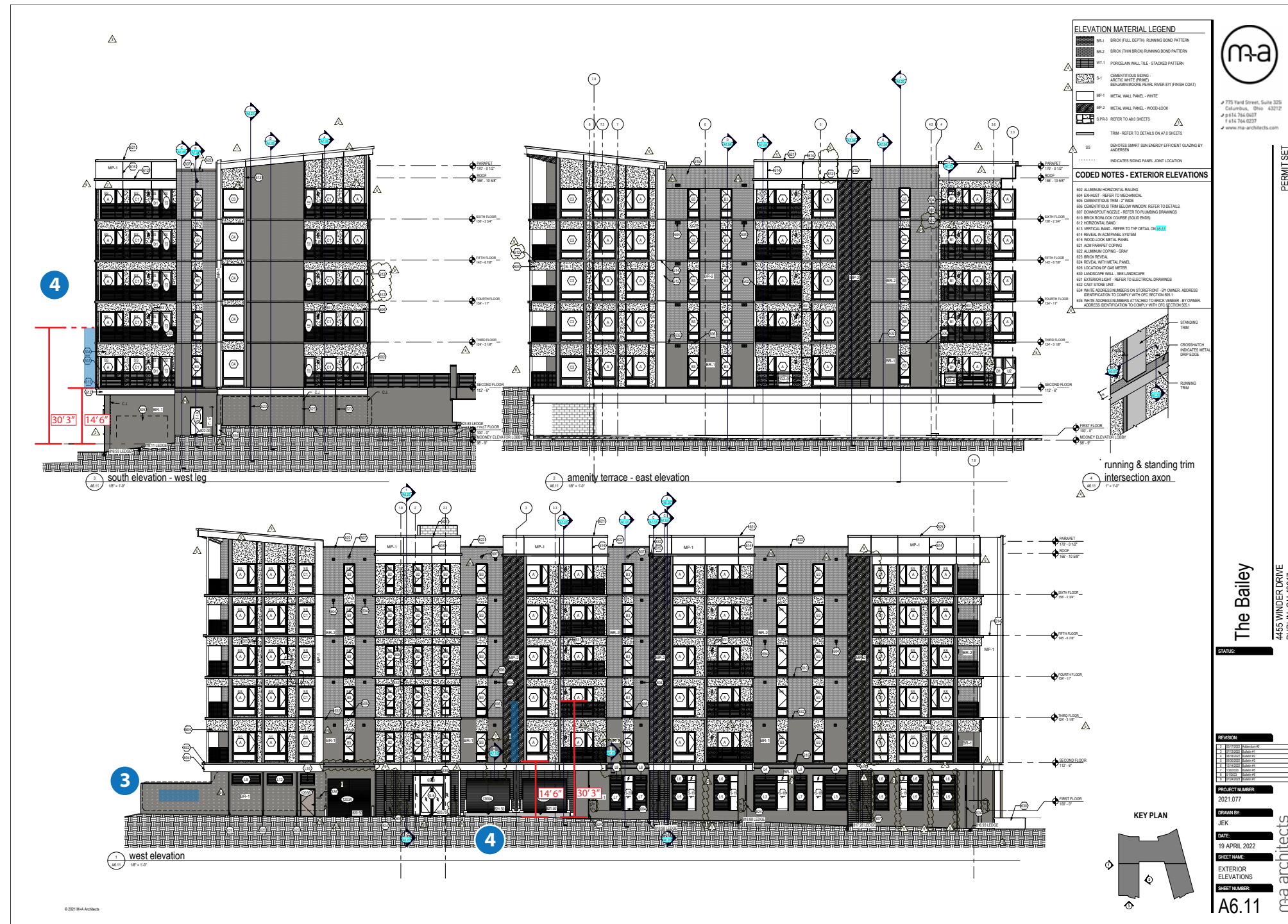
- 1 South Fascia Sign
- 2 North Canopy Sign
- 3 West Fascia Sign
- 4 Blade Sign
- 5 Projecting Sign
- 6 Door Sign
- 7 Ground Sign



Drawing scaled down to 1" = 32'

F Block - The Bailey Exterior Signage Elevation

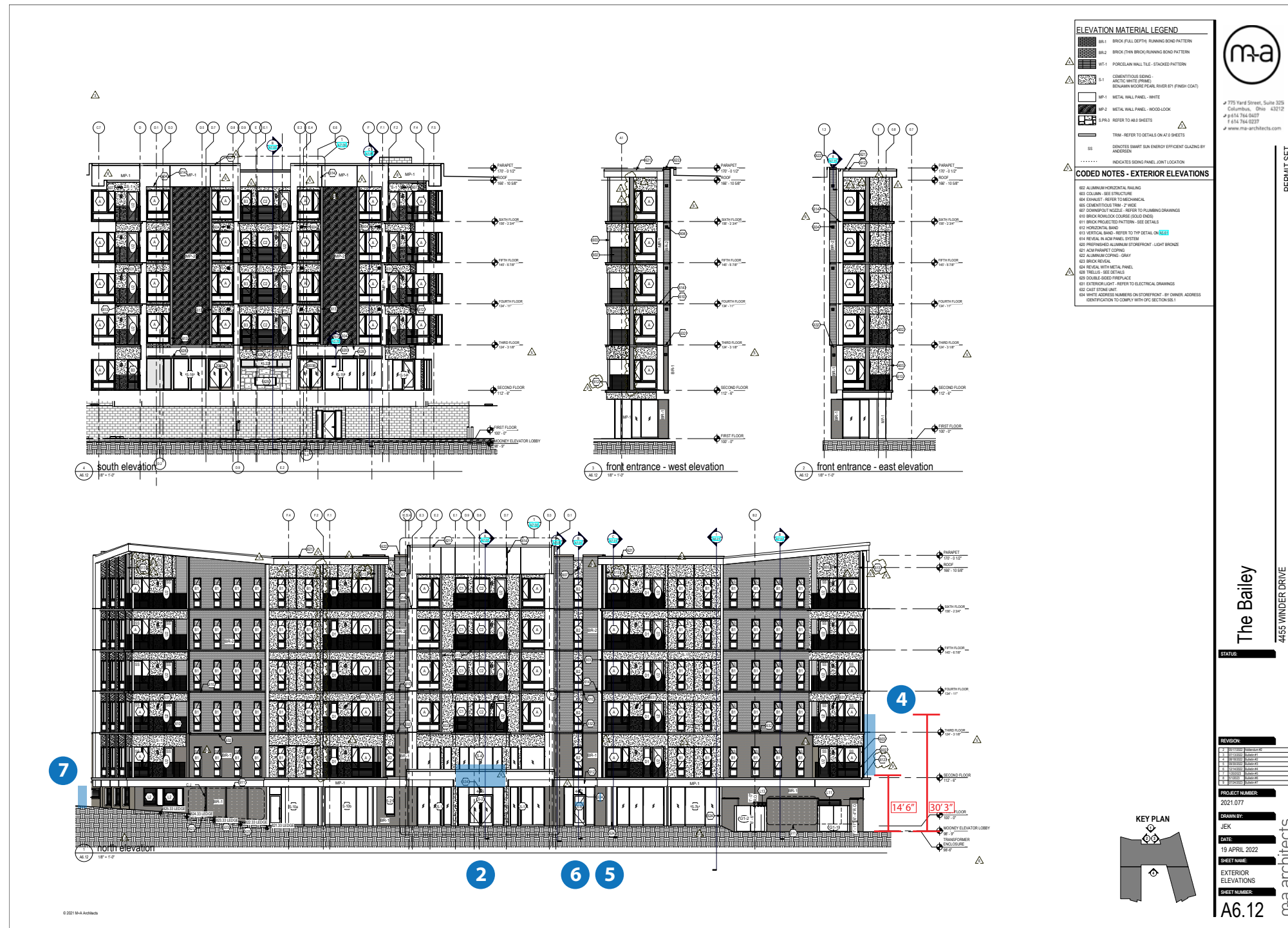
- 1 South Fascia Sign
- 2 North Canopy Sign
- 3 West Fascia Sign
- 4 Blade Sign
- 5 Projecting Sign
- 6 Door Sign
- 7 Ground Sign



Drawing scaled down to 1" = 32'

F Block - The Bailey Exterior Signage Elevation

- 1 South Fascia Sign
- 2 North Canopy Sign
- 3 West Fascia Sign
- 4 Blade Sign
- 5 Projecting Sign
- 6 Door Sign
- 7 Ground Sign



Drawing scaled down to 1"=32'



THE BAILEY
AT BRIDGE PARK

BRIDGE PARK
DUBLIN, OH

CRAWFORD HOYING

ma+ design

O'Reilly Office
300 Spruce St. Suite 150
Columbus, Ohio 43215
614-754-1895

ksc
KESLER
SIGN
COMPANY

MA Design Provided Rendierng

ma+ design



THE BAILEY
AT BRIDGE PARK

BRIDGE PARK
DUBLIN, OH

CRAWFORD HOYING

ma⁺ design

O'Reilly Office

300 Spruce St. Suite 150
Columbus, Ohio 43215
614-754-1895

ksc
KESSLER
SIGN
COMPANY


MA Design Provided Rendierng

ma⁺ design



THE BAILEY
AT BRIDGE PARK


BRIDGE PARK
DUBLIN, OH

 CRAWFORD HOYING

 ma+ design

O'Reilly Office

300 Spruce St. Suite 150
Columbus, Ohio 43215
614-754-1895



MA Design Provided Rendierng





THE BAILEY
AT BRIDGE PARK

BRIDGE PARK
DUBLIN, OH

CRAWFORD HOYING

ma⁺ design

O'Reilly Office
300 Spruce St. Suite 150
Columbus, Ohio 43215
614-754-1895



MA Design Provided Rendierng





MA Design Provided Rendierngs -Detail



THE BAILEY
AT BRIDGE PARK

BRIDGE PARK
DUBLIN, OH

CRAWFORD HOYING

ma+ design

O'Reilly Office

300 Spruce St. Suite 150
Columbus, Ohio 43215
614-754-1895



2 North Canopy Sign

4 Blade Sign

5 Projecting Sign

6 Door Sign



North Elevation

2

6

5

4

Crawford Hoying Provided Rendering
Modified by O'Reilly Office



1 South Fascia Sign



Backlit Wall Mounted Sign

Crawford Hoying Provided Rendering



South Elevation - East Leg

CLIENT | Crawford Hoying - The Bailey

LOCATION | Dublin, OH

SAVED AS |

Crawford_Hoying_The_Bailey

DATE | 8/10/23

REVISIONS | 10/20/23

SALESMAN | Adam Kessler

DESIGNER | Jared Faber

SALESMAN INITIAL OF APPROVAL |

X

- | | |
|-------------------------------------|--------------------------------|
| <input type="checkbox"/> GLOSS | <input type="checkbox"/> SATIN |
| <input type="checkbox"/> SEMI-GLOSS | <input type="checkbox"/> FLAT |



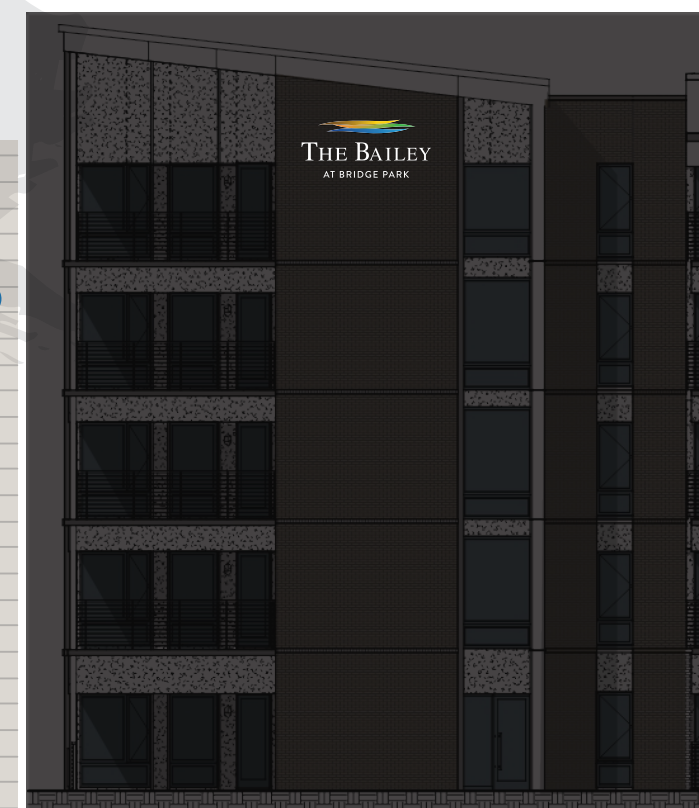
CIRCUITS 1-20AMP	5
VOLTAGE 120V	3
DRAW 5AMP MAX	2
	1

ALL CONCEPTS, DESIGNS, AND PLANS REPRESENTED BY THIS DOCUMENT ARE THE PROPERTY OF THE KESSLER DESIGN GROUP AND ARE FOR THE USE ON THE PROJECT SPECIFIED IN THIS DOCUMENT.

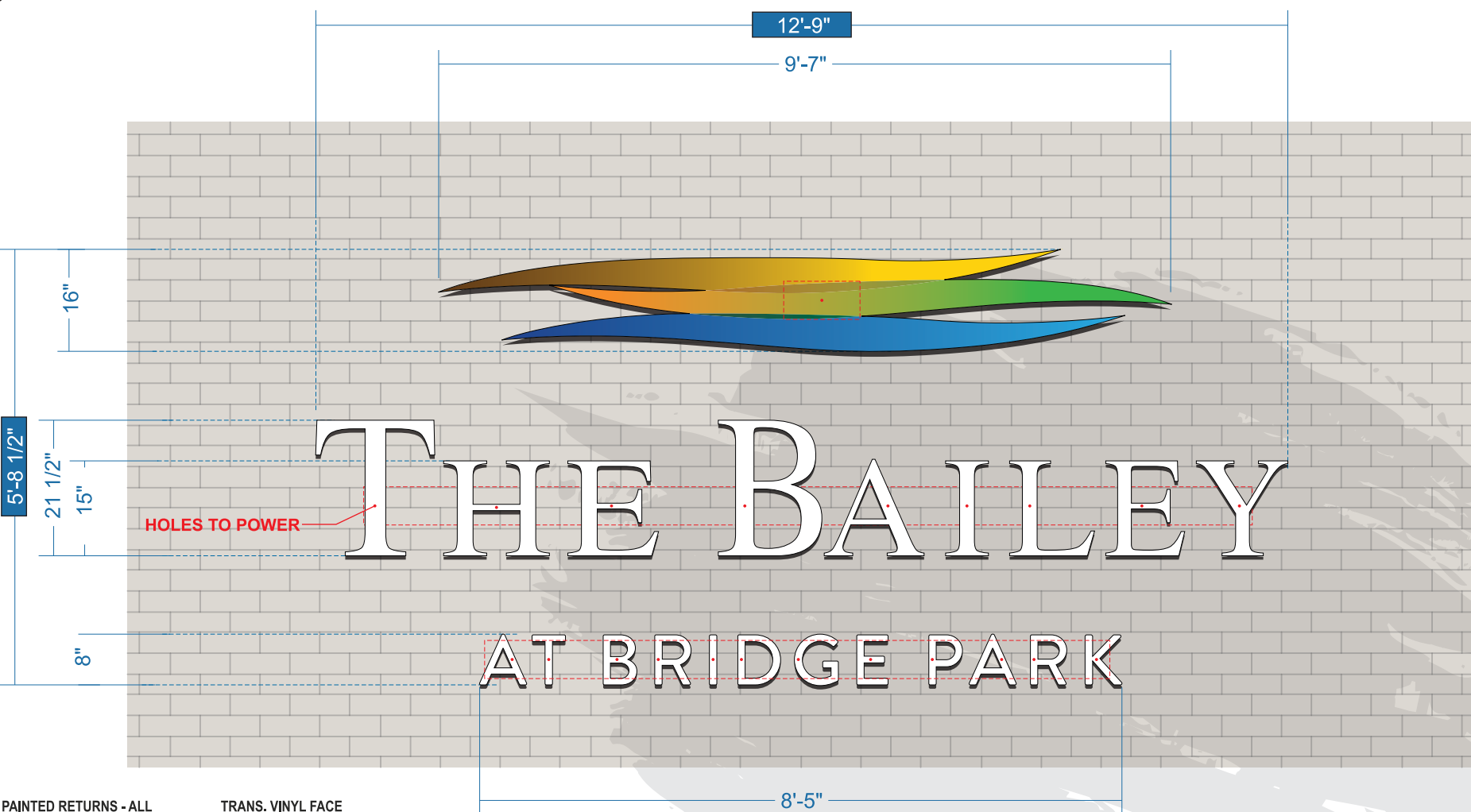
COPYRIGHT 2023 BY KESSLER DESIGN GROUP
ALL RIGHTS RESERVED



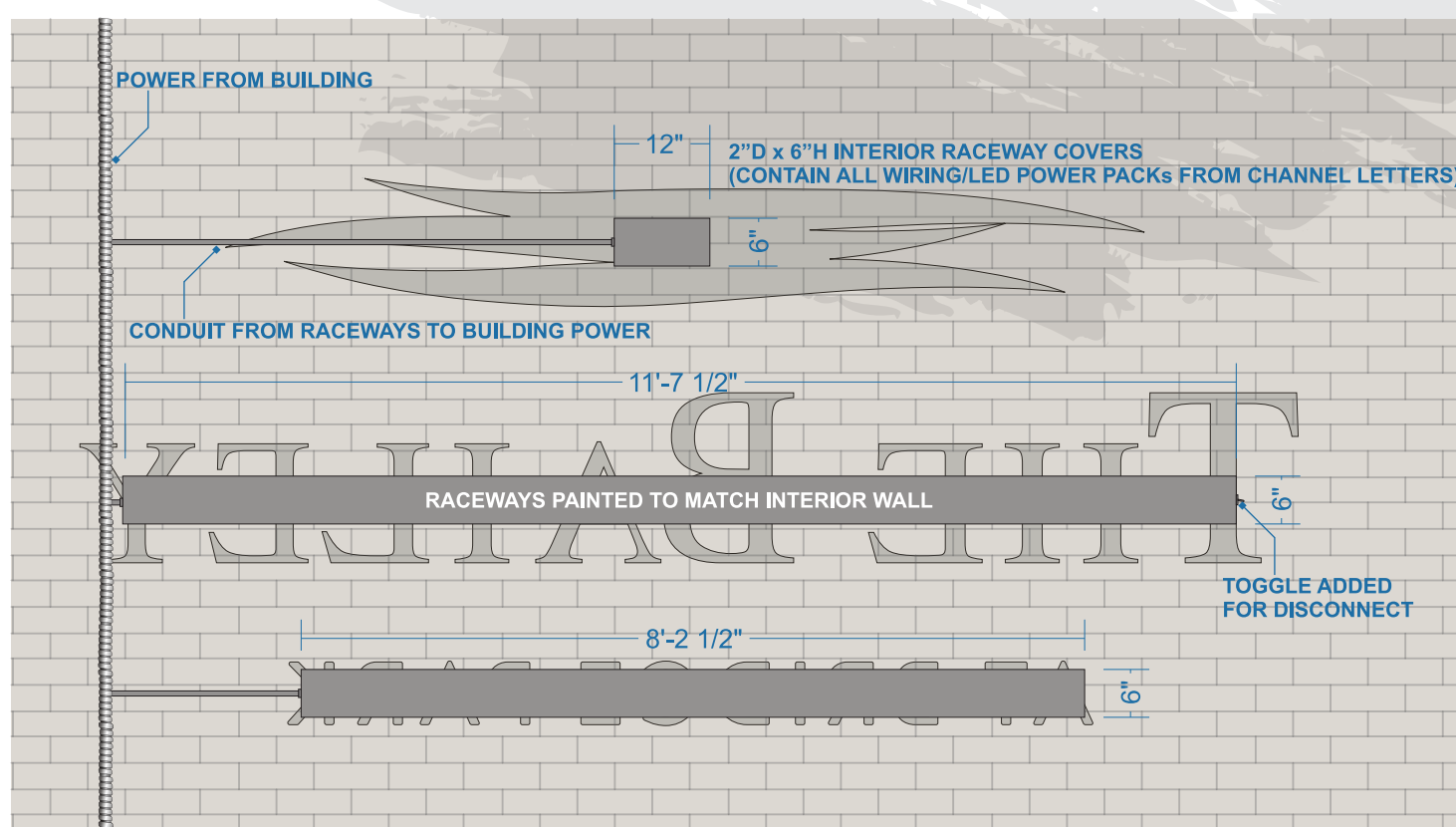
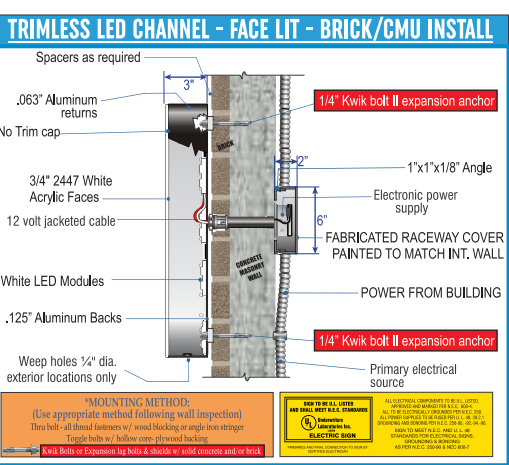
South Elevation - East Leg



South Elevation - East Leg



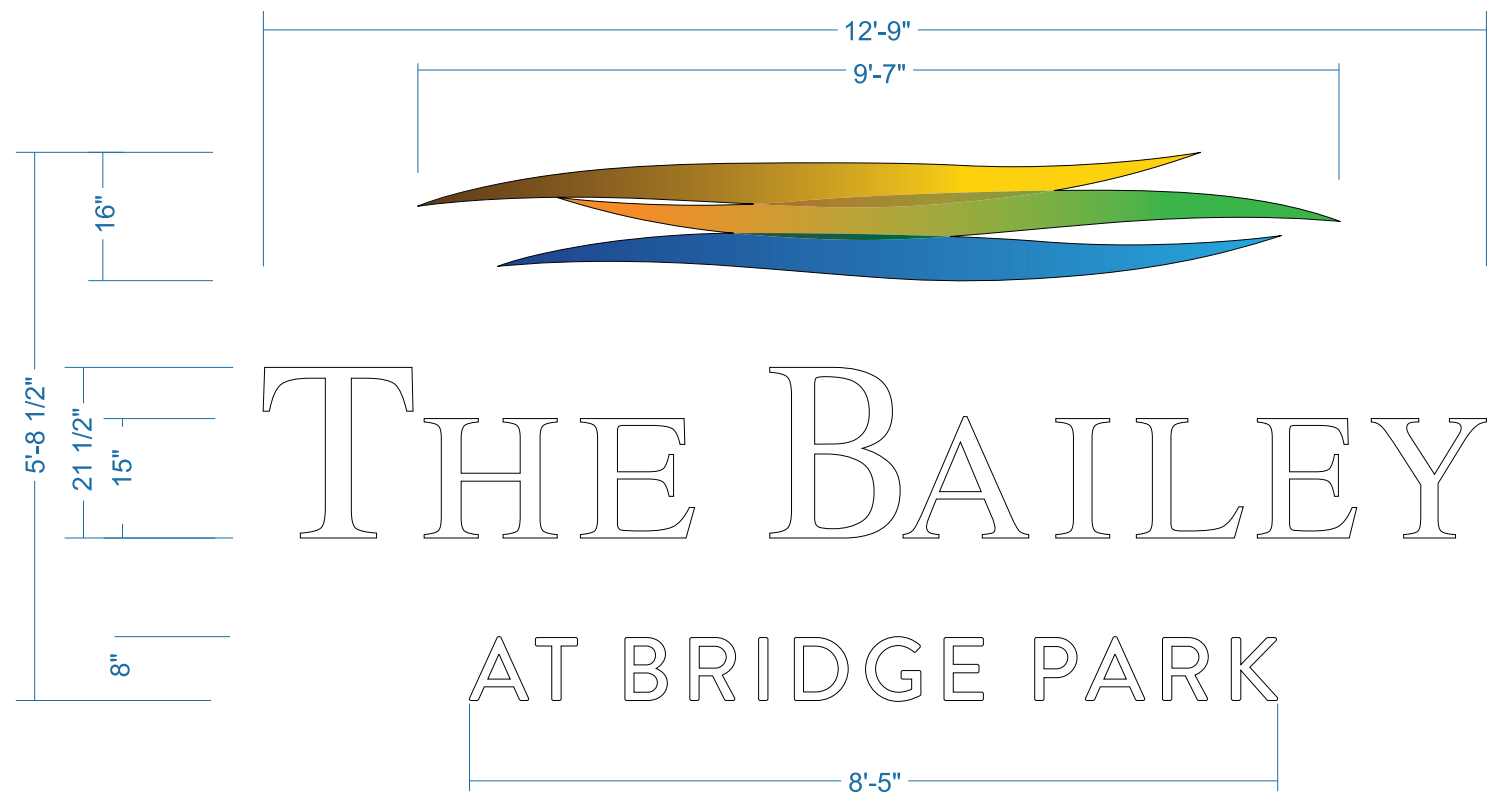
- PAINTED RETURNS - ALL**
- SATIN BLACK
- TRANS. VINYL FACE**
- DIGITAL PRINT
- CHANNEL LETTER FACES**
- 3/4" ACRYLIC
 - 2447 WHITE



NEW S/F LED ILLUMINATED TRIMLESS CHANNEL LETTERS ATTACHED TO BRICK/CMU WALL

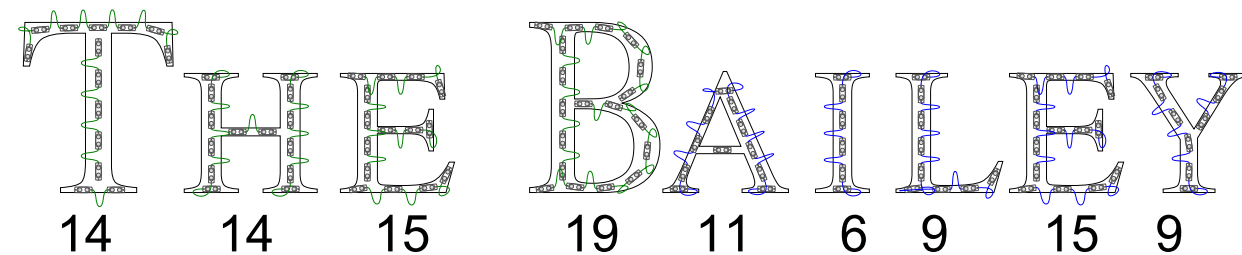
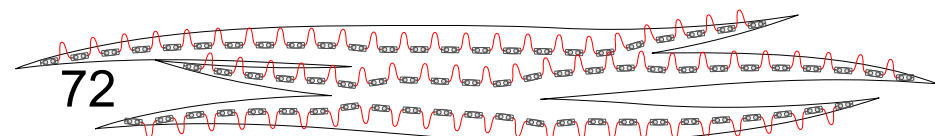
SCALE: 1/2" = 1'

- DIGITAL PRINT
- WHITE ACRYLIC
- SATIN BLACK RETURNS



THE BAILEY

AT BRIDGE PARK



<p>Load: 93.6 % Modules: 72.0 Watts: 56.2 of 60.0 PS: Energizer Series Universal 60W</p>	<p>Load: 80.6 % Modules: 62.0 Watts: 48.4 of 60.0 PS: Energizer Series Universal 60W</p>	<p>Load: 65.0 % Modules: 50.0 Watts: 39.0 of 60.0 PS: Energizer Series Universal 60W</p>	<p>Load: 80.6 % Modules: 62.0 Watts: 48.4 of 60.0 PS: Energizer Series Universal 60W</p>
---	---	---	---

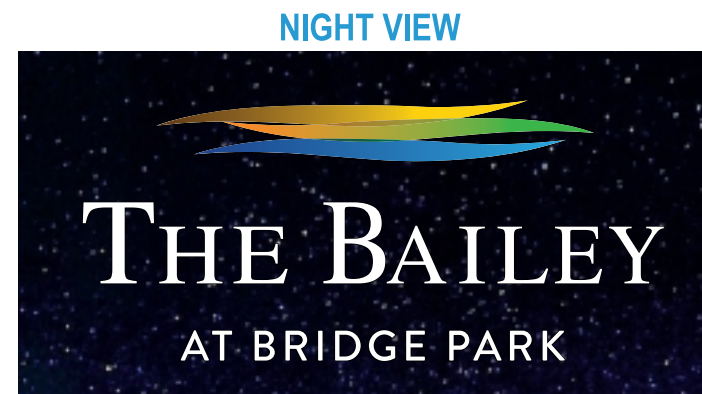
ESTIMATED PRODUCT PER SIGN

(246) Qwik Mod 2 Modules:
 (UL#: PL-QM2-TW150-P, SKU#:)

(4) Energizer Series Universal 60W Driver(s):
 (UL#: P-OH060-12-EC, SKU#: P-OH060-12-EC)

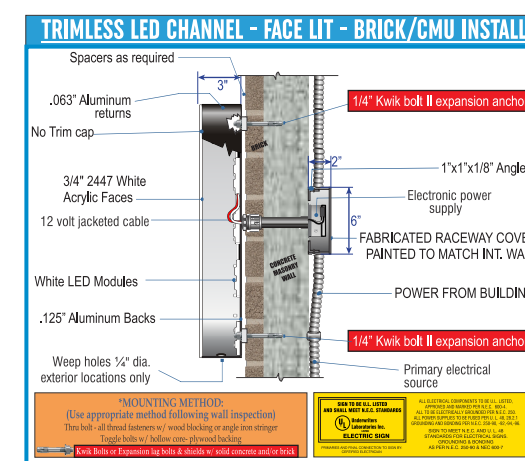
FACES 3/4" 2447 WHITE ACRYLIC W/PRINT APPLIED TO LOGO

RETURNS 3" STD SATIN BLACK ON LETTERS & 3" DEEP .063 ALUM PAINTED SATIN BLACK W/WELDED .125 ALUM BACK



NIGHT VIEW

TRANS. VINYL FACE	
	DIGITAL PRINT
PAINTED RETURNS - ALL	
	SATIN BLACK
CHANNEL LETTER FACES	
	3/4" ACRYLIC 2447 WHITE



CLIENT | Crawford Hoying - The Bailey

LOCATION | Dublin, OH

SAVED AS |

Crawford_Hoying_The_Bailey

DATE | 8/10/23

REVISIONS | 10/24/23

SALESMAN | Adam Kessler

DESIGNER | Jared Faber

SALESMAN INITIAL OF APPROVAL |

X

<input type="checkbox"/>	GLOSS	<input type="checkbox"/>	SATIN
<input type="checkbox"/>	SEMI-GLOSS	<input type="checkbox"/>	FLAT



CIRCUITS 1-20AMP	5
VOLTAGE 120V	3
DRAW 5AMP MAX	2
	1

ALL CONCEPTS, DESIGNS, AND PLANS REPRESENTED BY THIS DOCUMENT ARE THE PROPERTY OF THE KESSLER DESIGN GROUP AND ARE FOR THE USE ON THE PROJECT SPECIFIED IN THIS DOCUMENT.

COPYRIGHT 2023 BY KESSLER DESIGN GROUP ALL RIGHTS RESERVED

SQ. FT:
41

NEW S/F LED ILLUMINATED TRIMLESS CHANNEL LETTERS ATTACHED TO BRICK/CMU WALL

SCALE: 1/2" = 1'

2 North Canopy Sign



Awning Entrance Signage

Crawford Hoying Provided Rendierng



North Elevation

CLIENT | Crawford Hoying - The Bailey

LOCATION | Dublin, OH

SAVED AS |

Crawford_Hoying_The_Bailey

DATE | 8/10/23

REVISIONS | 10/20/23

SALESMAN | Adam Kessler

DESIGNER | Jared Faber

SALESMAN INITIAL OF APPROVAL |

X _____

- | | |
|-------------------------------------|--------------------------------|
| <input type="checkbox"/> GLOSS | <input type="checkbox"/> SATIN |
| <input type="checkbox"/> SEMI-GLOSS | <input type="checkbox"/> FLAT |



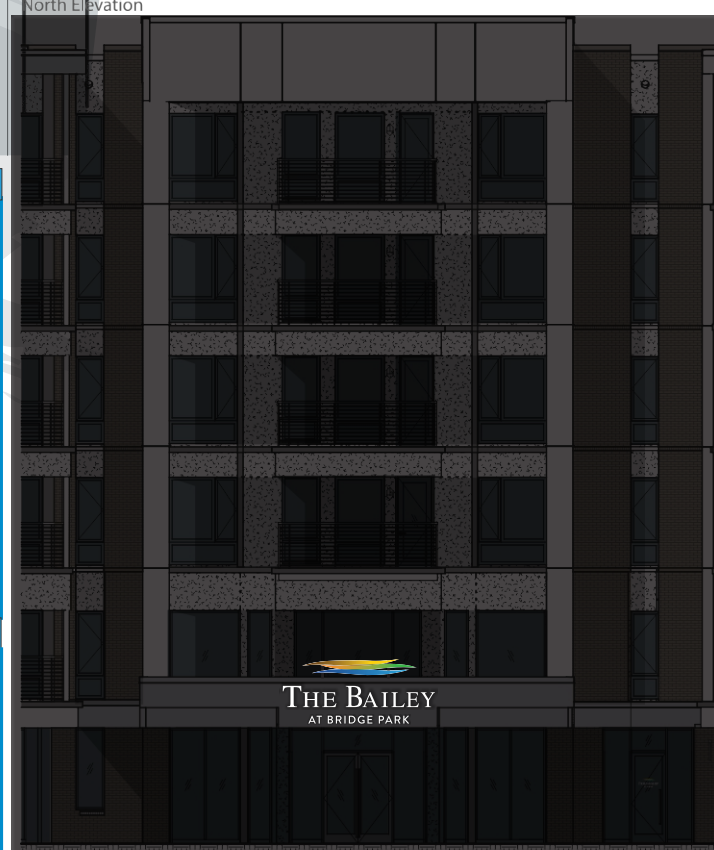
CIRCUITS 1-20AMP	5
VOLTAGE 120V	3
DRAW 5AMP MAX	2
	1

ALL CONCEPTS, DESIGNS, AND PLANS REPRESENTED BY THIS DOCUMENT ARE THE PROPERTY OF THE **KESSLER DESIGN GROUP** AND ARE FOR THE USE ON THE PROJECT SPECIFIED IN THIS DOCUMENT.

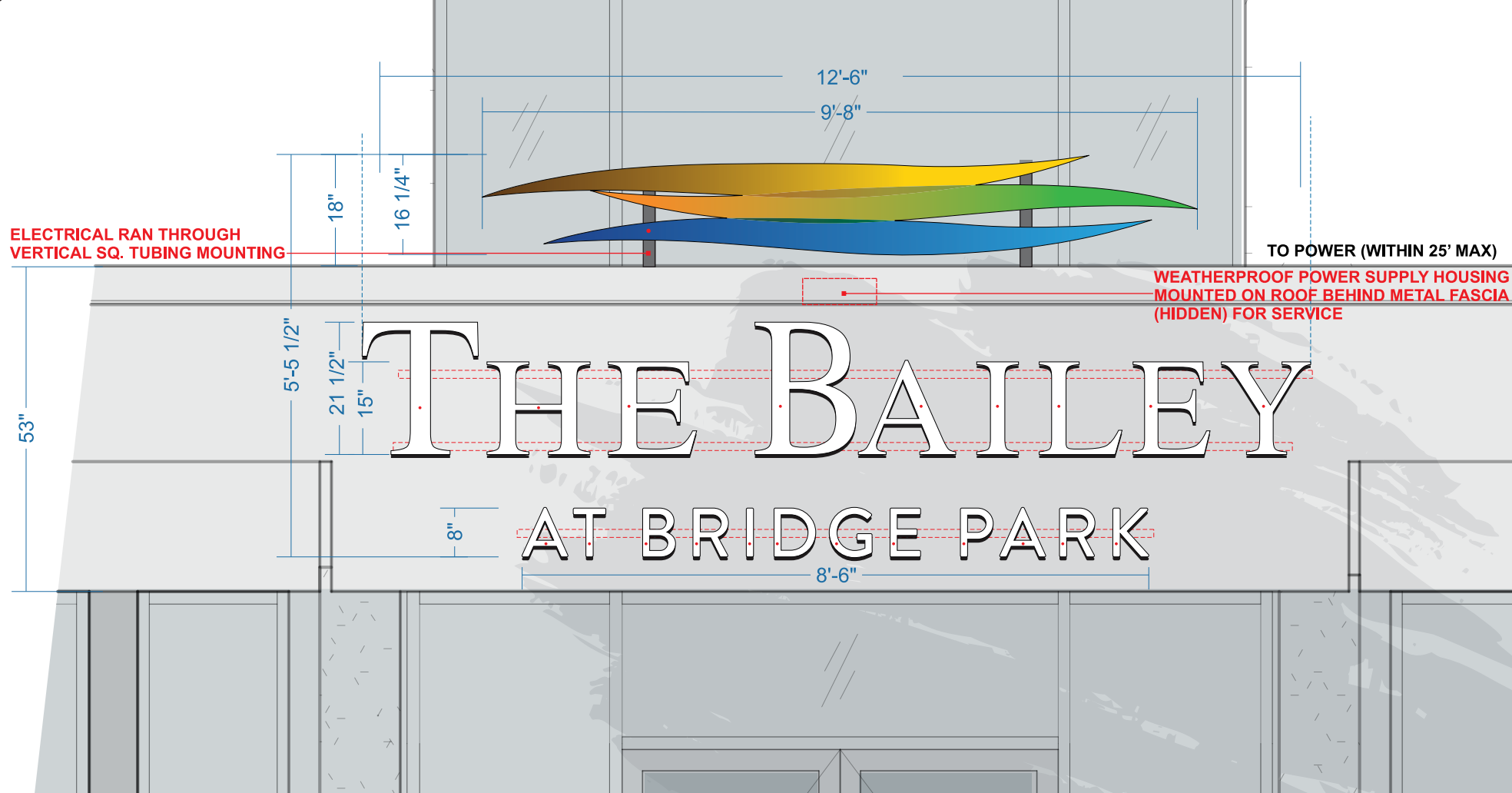
COPYRIGHT 2023 BY **KESSLER DESIGN GROUP**
ALL RIGHTS RESERVED



North Elevation



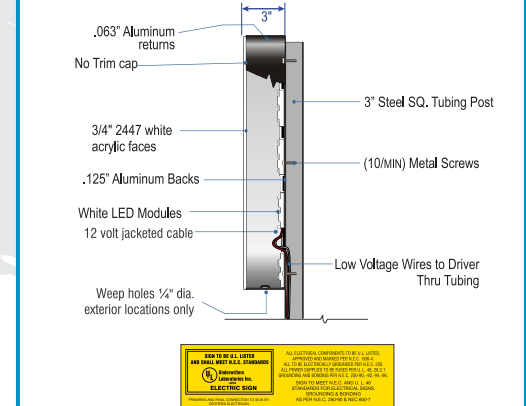
North Elevation



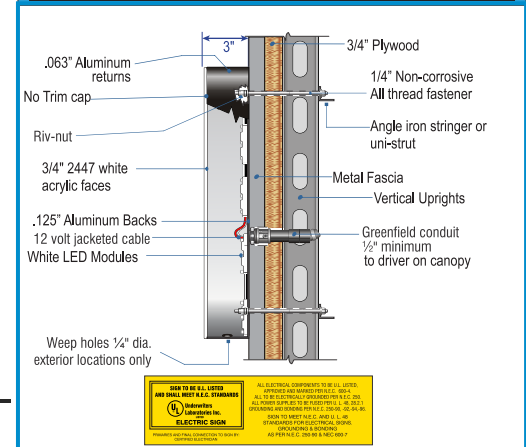
- PAINTED RETURNS - ALL**
- SATIN BLACK
- TRANS. VINYL FACE**
- DIGITAL PRINT
- CHANNEL LETTER FACES**
- 3/4" ACRYLIC
 - 2447 WHITE



TRIMLESS LED CHANNEL - FACE LIT - VERTICAL POST INSTALL



TRIMLESS LED CHANNEL - FACE LIT - FASCIA INSTALL



NEW S/F LED ILLUMINATED TRIMLESS CHANNEL LETTERS ATTACHED TO BUILDING AWNING

SCALE: 1/2" = 1'

- DIGITAL PRINT
- WHITE ACRYLIC
- SATIN BLACK RETURNS