

Proudly Serving Central Ohio Since 1954
 1640 Harmon Ave, Columbus, Ohio, 43223
 (614) 444-3333 (FAX) 444-3026
 www.danitesign.com

UL LISTED via STANDARD UL48
FILE NO: E60042 DaNITE SIGN CO.
UL APPLIES TO ILLUMINATED SIGNS ONLY.

COLORS

- MATTHEWS BRUSHED ALUMINUM PAINT
- MATTHEWS MP18249 DARK PEWTER METALLIC.
- BLACK PAINT

APPROVED-CUSTOMER _____ DATE _____



JOB NAME	TWINS AUTO OF DUBLIN	#S1-1264.22
STREET	5035 POST RD.	
CITY, STATE	DUBLIN, OH	
SIGN TYPE	NEW MONUMENT ON NEW FOUNDATION / POLE	
DATE	2/17/22	REV. DATE:
FILE NAME	TWINS AUTO OF DUBLIN.CDR	
DIRECTORY	THAD > 2021 > T	

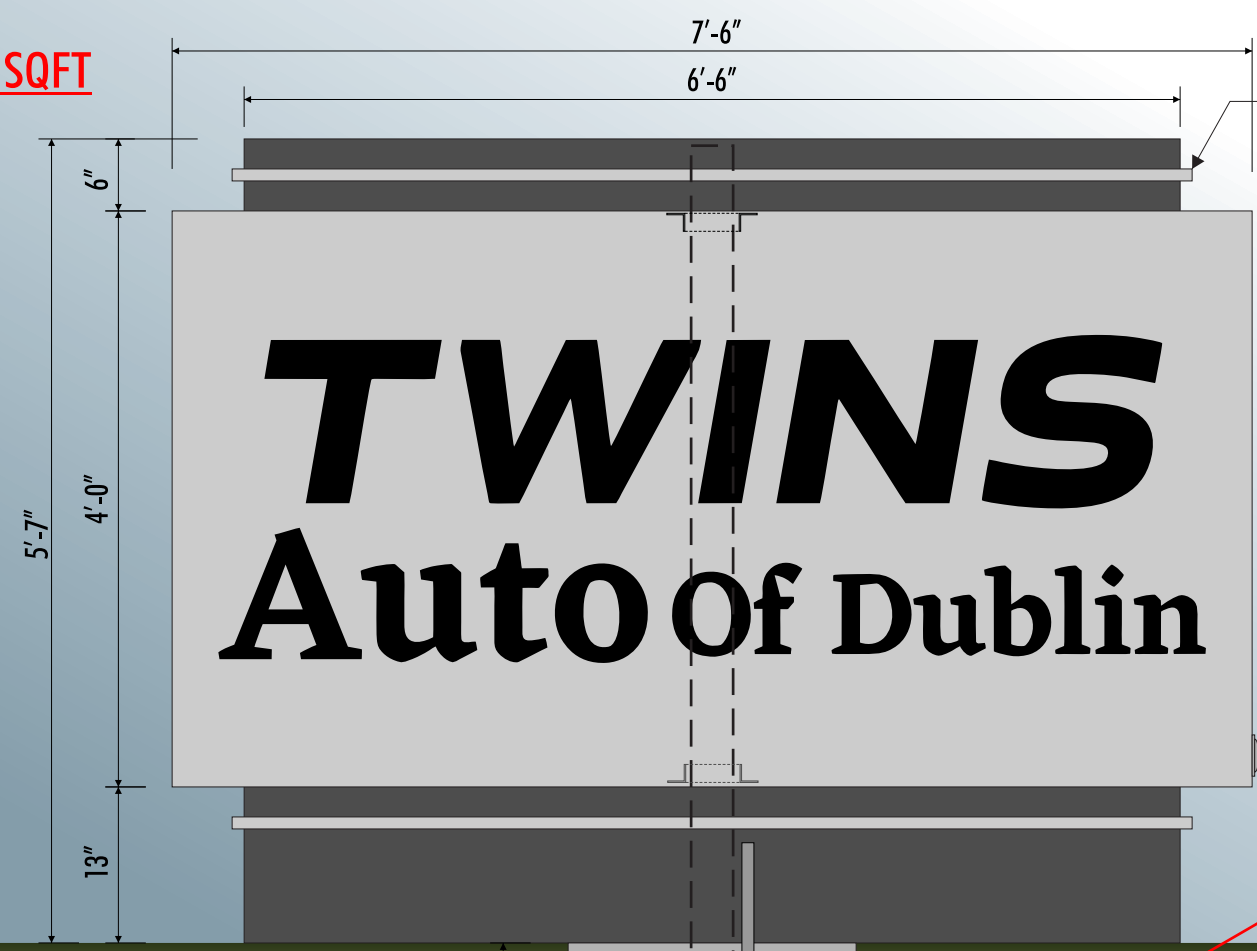
SCALE AS NOTED SALE OH DESIGNER AG

This project is an original unpublished design concept protected by copyright laws of The United States of America. Prior to sale or print design fees, all visual materials, specifications, annexes and revisions remain the exclusive property of DaNite Sign Company. The use of any part herein to manufacture, sell or adapt this concept to other mediums by unauthorized parties constitutes an actionable plagiarism.

TOP VIEW



30 SQFT

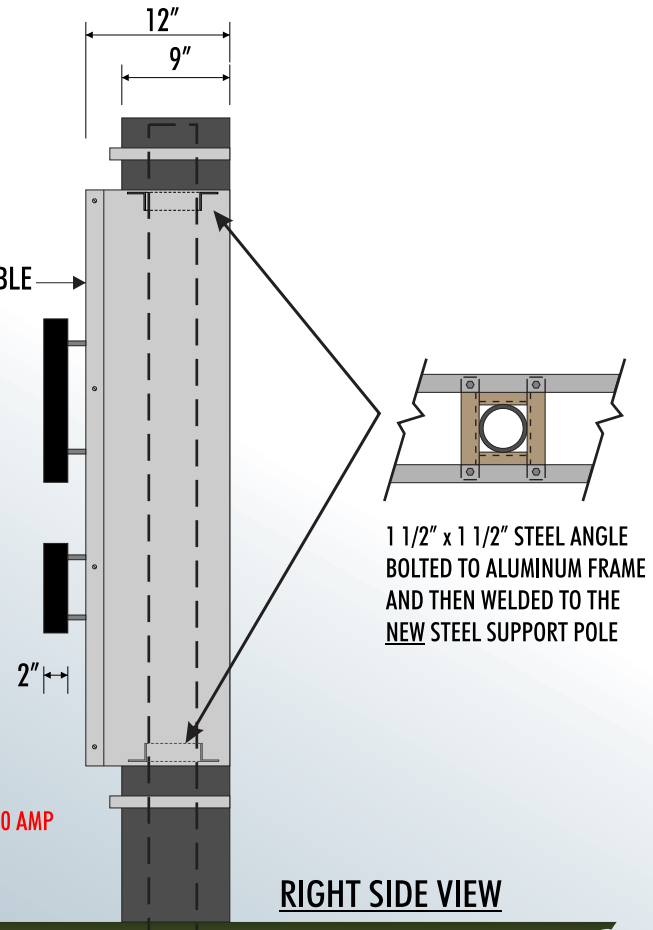


1" X 1" ALUMINUM TUBING

SIGN FACE IS AN ALUMINUM PAN - REMOVEABLE

DISCONNECT SWITCH
 (1) EXISTING 120 VOLT / 20 AMP DEDICATED CIRCUIT.
 12/2 WIRE WITH GROUND

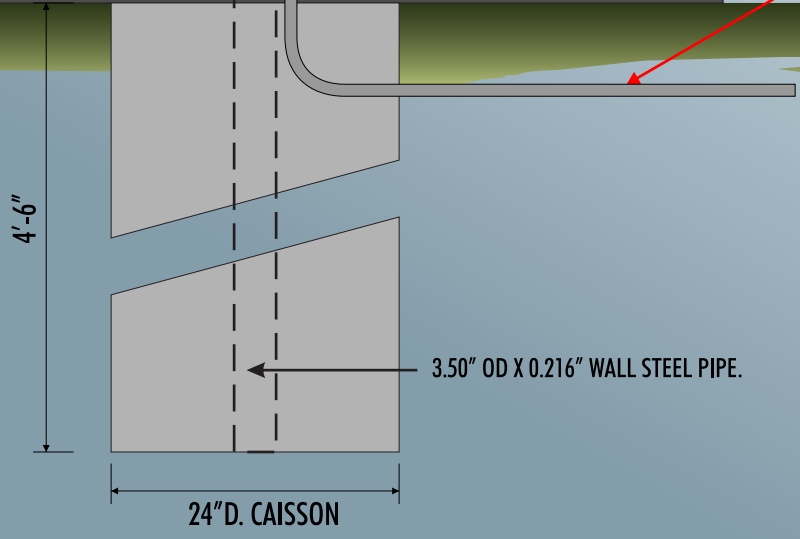
RIGHT SIDE VIEW



1 1/2" x 1 1/2" STEEL ANGLE BOLTED TO ALUMINUM FRAME AND THEN WELDED TO THE NEW STEEL SUPPORT POLE

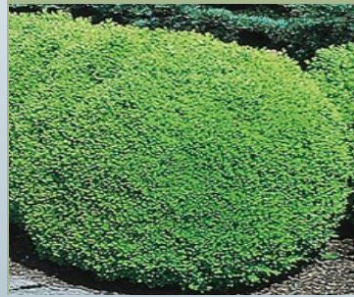
#S1-1264.22: NEW S/F MONUMENT SIGN WITH HALO-LIT LETTERS SCALE: 3/4" = 1'-0"

- CABINET: FABRICATED ALUMINUM PAINTED MATTHEWS BRUSHED ALUMINUM METALLIC AND MATTHEWS MP18249 DARK PEWTER METALLIC.
- LETTERING: 2" DEEP HALO-LIT LETTERS PAINTED BLACK WITH WHITE LED ILLUMINATION.
- DETAIL TRIM: 1" X 1" ALUMINUM TUBING PAINTED MATTHEWS BRUSHED ALUMINUM.

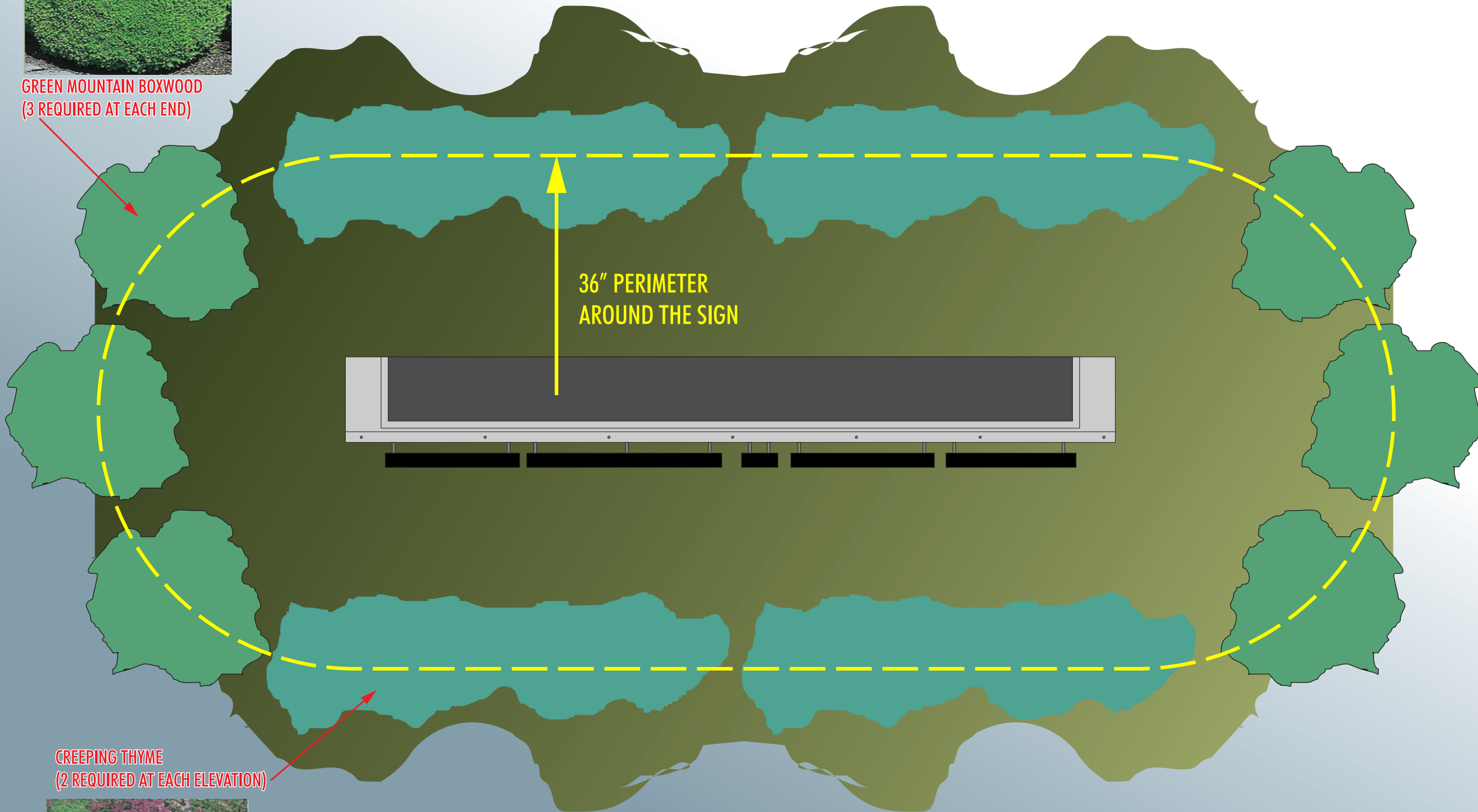


NIGHT VIEW





GREEN MOUNTAIN BOXWOOD
(3 REQUIRED AT EACH END)



36" PERIMETER
AROUND THE SIGN

CREeping THYME
(2 REQUIRED AT EACH ELEVATION)



MONUMENT SIGN - LANDSCAPE PLAN $3/4" = 1'-0"$



Proudly Serving Central Ohio Since 1954
1640 Harmon Ave, Columbus, Ohio, 43223
(614) 444-3333 (FAX) 444-3026
www.danitesign.com

UL LISTED via STANDARD UL48
FILE NO: E60042 DaNITE SIGN CO.

UL APPLIES TO ILLUMINATED SIGNS ONLY.

COLORS

APPROVED-CUSTOMER _____ DATE _____

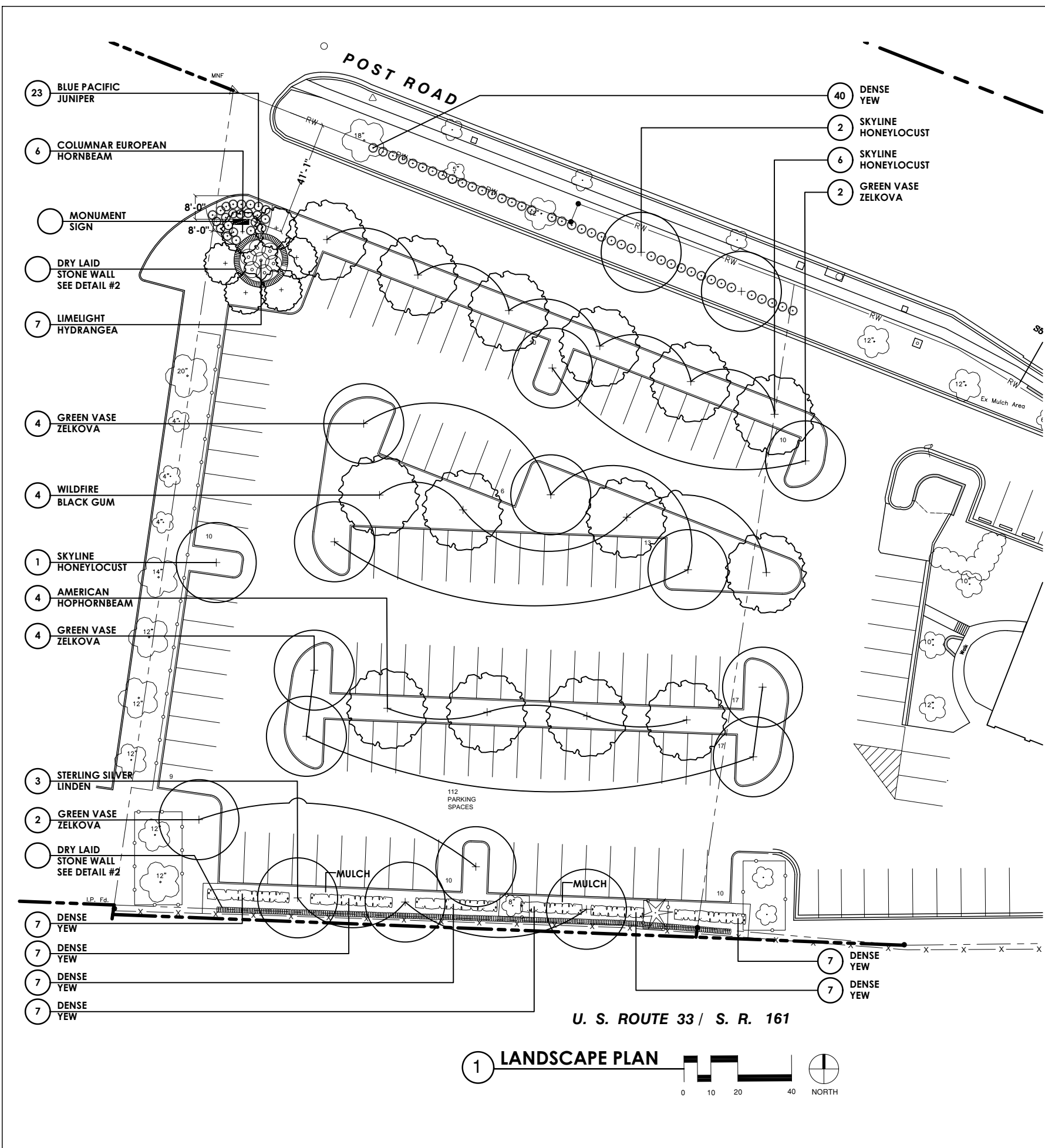


JOB NAME	TWINS AUTO OF DUBLIN	#S1-39723-R3
STREET	5035 POST RD.	
CITY, STATE	DUBLIN, OH	
SIGN TYPE	NEW MONUMENT ON EXISTING FOUNDATION / POLE	
DATE	1/28/21	REV. DATE: 1/29/21
FILE NAME	TWINS AUTO OF DUBLIN.CDR	
DIRECTORY	THAD > 2021 > T	

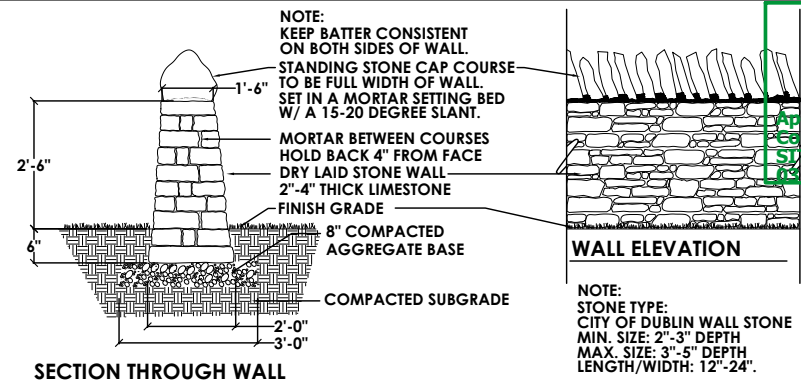
SCALE AS NOTED SALE OH DESIGNER TK

This project is an original unpublished design concept protected by copyright laws of The United States of America. Prior to sale or print design fees, all visual materials, specifications, annexes and revisions remain the exclusive property of DaNite Sign Company. The use of any part herein to manufacture, sell or adapt this concept to other mediums by unauthorized parties constitutes an actionable plagiarism.





1 LANDSCAPE PLAN



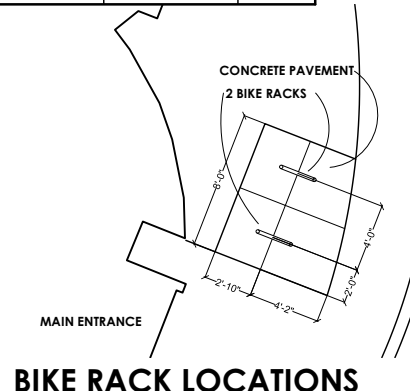
2 DRY LAID STONE WALL

PLANT MATERIALS LIST

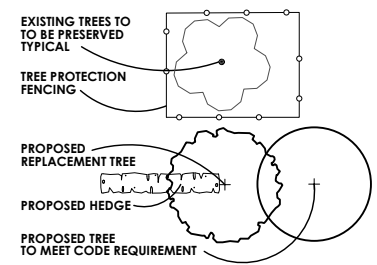
QTY.	COMMON NAME	BOTANICAL NAME	SIZE	ROOT
TREES				
9	SKYLINE HONEYLOCUST	<i>Geditsia l. l. 'Skyline'</i>	2 1/2" Cal.	B&B
3	STERLING SILVER LINDEN	<i>Tilia tomentosa 'Sterling'</i>	2 1/2" Cal.	B&B
6	COLUMNAR EUROPEAN HORNBEAM	<i>Carpinus betulus 'Columnaris'</i>	2 1/2" Cal.	B&B
12	GREEN VASE ZELKOVA	<i>Zelkova serrata 'Green Vase'</i>	2 1/2" Cal.	B&B
4	WILDFIRE BLACK GUM	<i>Nyssa sylvatica 'Wildfire'</i>	2 1/2" Cal.	B&B
4	AMERICAN HOPHORNBEAM	<i>Ostrya virginiana</i>	2 1/2" Cal.	B&B
SHRUBS				
82	DENSE YEW	<i>Taxus x media 'Densiflora'</i>	30" Hgt.	B&B
23	BLUE PACIFIC JUNIPER	<i>Juniperus conferta 'Blue Pacific'</i>	18" Spr.	Cont.
7	LIMELIGHT HYDRANGEA	<i>Hydrangea p.g. 'Limelight'</i>	#5	Cont.

GENERAL PLANTING NOTES

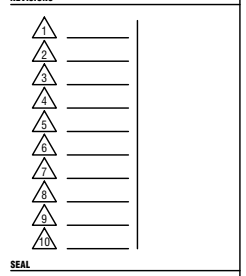
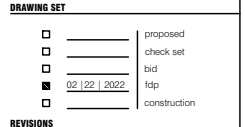
- EACH CONTRACTOR IS TO VERIFY WITH OWNER AND UTILITY COMPANIES THE LOCATIONS OF ALL UTILITIES PRIOR TO CONSTRUCTION. TO DETERMINE IN THE FIELD THE ACTUAL LOCATIONS AND ELEVATIONS OF ALL EXISTING UTILITIES, WHETHER SHOWN ON THE PLANS OR NOT. THE CONTRACTOR SHALL CALL UTILITY PROTECTION SERVICE 72 HOURS PRIOR TO CONSTRUCTION.
- EXAMINE FINISH SURFACE, GRADES, TOPSOIL QUALITY AND DEPTH. DO NOT START ANY WORK UNTIL UNSATISFACTORY CONDITIONS HAVE BEEN CORRECTED. VERIFY LIMITS OF WORK BEFORE STARTING.
- CONTRACTOR RESPONSIBLE FOR COST OF REPAIRS TO EXISTING SITE CONDITIONS WHEN DAMAGED BY CONTRACTOR. REPAIR TO THE SATISFACTION OF THE OWNER.
- ALL PLANT MASSES TO BE CONTAINED WITHIN 3" DP. BLACK HARDWOOD BARK MULCH BED. ALL PLANT MASSES TO BE INCORPORATED BY A CONTINUOUS MULCH BED TO THE LIMITS SHOWN.
- CONTRACTOR SHALL MAINTAIN POSITIVE DRAINAGE IN LAWN AREAS.
- FINE GRADE LAWN AREAS TO PROVIDE A SMOOTH AND CONTINUAL GRADE FREE OF IRREGULARITIES OR DEPRESSIONS.
- CONTRACTOR SHALL SEED ALL AREAS DISTURBED DURING CONSTRUCTION INCLUDING ISLANDS AND PENINSULAS.
- ALL PLANTS SHALL MEET OR EXCEED STANDARDS SET IN THE U.S.A. STANDARD FOR NURSERY STOCK.
- ALL PLANTING OPERATIONS SHALL ADHERE TO THE AMERICAN ASSOCIATION OF NURSERYMEN STANDARDS.
- EACH CONTRACTOR SHALL NOTIFY THE OWNER'S REPRESENTATIVE IMMEDIATELY IF A DISCREPANCY IS FOUND BETWEEN THE DRAWINGS AND THE ACTUAL CONDITIONS IN THE FIELD, PRIOR TO CONSTRUCTION.
- ALL EXISTING PLANT MATERIAL IS TO BE PRESERVED UNLESS SPECIFICALLY NOTED OTHERWISE.
- CONTRACTOR IS RESPONSIBLE FOR ALL PLANTS DRAWN ON PLANS. PLANT MATERIALS LIST QUANTITIES ARE FOR CONVENIENCE ONLY.
- CONTRACTOR TO PROVIDE A COMPLETE 1 YEAR WARRANTY OF PLANT MATERIAL INCLUDING PLANTS AS VIABLE AND THRIVING.
- ANY SUBSTITUTIONS OF PLANT MATERIAL OR CHANGES TO THE DESIGN SHALL BE AUTHORIZED.



BY LANDSCAPE FORMS PLANT LEGEND



AUTOMOTIVE FACILITY
5067 POST ROAD
DUBLIN, OHIO 43017



PROJECT NUMBER: 22005
SHEET TITLE: LANDSCAPE PLAN
SHEET NUMBER: **L2.01**