

Landscape Calculations

- 153.133 - Minimum Landscape Requirements:
- ▲ (A) Perimeter buffer landscape requirements
 - (5) Vehicular use area perimeter requirements. Appendix B. Evergreen hedge provided. ±280 LF / 40 = 7 Perimeter Trees Required / 7 Perimeter Trees Provided
 - ▲ (B) Interior Landscaping for Vehicular Use Areas:
 - One Tree per peninsula or island counted towards required landscape area. 3 islands provided = 3 Trees Required / 3 Trees Provided
 - (2) Landscape Area: For each 100 SF a minimum of 5 SF of landscaped area required. ±15,900 SF VUA (5%) = ±795 SF Landscape Area Required / ±1,320 SF Landscape Provided
 - (3) Tree planting Requirement: Following number and size of trees are required within interior landscaped area. One tree for every 5,000 SF of total ground coverage of structures and VUA.
 - 1 Tree / 5,000 SF Ground Coverage
 - ±30,000 SF / 5000 SF = 6 Trees Required, 2" Caliper / 6 Trees Provided, 2" Caliper
 - (D): Additional Site Planting Requirements
 - (2) Site Planting Requirements: 1" in tree size for every 1,500 SF of building ground coverage ±14,150 SF Building Ground Coverage / ±14,150 / 1,500 = ±10" Caliper Required (5 trees at 2" caliper) / 28" Caliper Provided (14 Site Trees at 2" caliper) / 54" Total Caliper Provided (14 Site Trees + 13 Parking Lot Trees)

PLANT SCHEDULE

SITE TREES	CODE	QTY	BOTANICAL / COMMON NAME	SIZE	CONDITION
	NW	4	Nyssa sylvatica 'Wildfire' Wildfire Black Gum	2" Cal.	B&B
	TM	2	Taxodium distichum 'Mickelson' Shawnee Bald Cypress	6' Ht.	B&B
	TT	4	Tilia tomentosa 'Sterling' Sterling Silver Linden	2" Cal.	B&B
	UD	4	Ulmus parvifolia 'Dynasty' Dynasty Lacebark Elm	2" Cal.	B&B
PARKING LOT TREES	CODE	QTY	BOTANICAL / COMMON NAME	SIZE	CONDITION
	PL	6	Platanus x acerifolia 'Liberty' Liberty London Plane Tree	2" Cal.	B&B
	QR	7	Quercus rubra Red Oak	2" Cal.	B&B
SHRUBS	CODE	QTY	BOTANICAL / COMMON NAME	SIZE	CONDITION
	BG	52	Buxus x 'Glencoe' Chicagoland Green Boxwood	24" Ht.	Cont.
	HJ	18	Hydrangea paniculata 'Jane' Little Lime Panicle Hydrangea	24" Ht.	Cont.
	IB	23	Ilex x meserveae 'Blue Boy' Blue Boy Holly	36" Ht.	Cont.
	JG	28	Juniperus chinensis 'Gold Coast' Gold Coast Juniper	24" Ht.	Cont.
	JF	38	Juniperus chinensis 'Sea Green' Sea Green Juniper	24" Ht.	Cont.
	JB	6	Juniperus virginiana 'Burburk' Burburk Eastern Redcedar	4' Ht.	Cont.
	SD	24	Spiraea x bumalda 'Denistar' Denistar Spirea	24" Ht.	Cont.
	TR	25	Thuja occidentalis 'Rheingold' Rheingold Arborvitae	24" Ht.	Cont.
	VC	16	Viburnum carlesii 'Coyuga' Coyuga Koreanspice Viburnum	30" Ht.	Cont.
GRASSES	CODE	QTY	BOTANICAL / COMMON NAME	SIZE	CONDITION
	SH	6	Sporobolus heterolepis Prairie Dropseed	#2	Cont.

NOTE:

- Sight Distance Triangle shown, per Policy No. 08-013, to illustrate compliance with the proposed site grading and landscape features.
- Contractor shall field verify locations of existing ductbanks and sewer utilities prior to ordering materials. Coordinate utility locations with sign vendor and owner/developer.



600 Main Street
Suite 300
North Little Rock, AR 72114
Phone: 501-758-7443

www.taggarch.com

PRIVATE SITE IMPROVEMENT PLAN



NEUROLOGICAL TRANSITIONAL CENTER

DUBLIN, OH

PROJECT NAME _____

SEAL _____

REVISIONS

NO.	DESCRIPTION	DATE
3	PR 003	2024-03-20

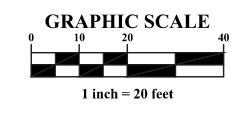
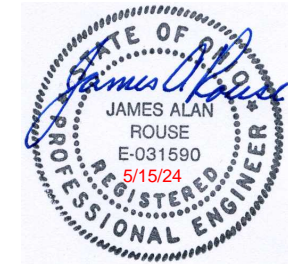
LANDSCAPE PLAN

SHEET NAME _____

DATE April 3, 2024

PROJECT NUMBER 20220237

SHEET NUMBER **L0.1**



QTY (1) Double-faced Internally Illuminated Horizontal Monument Two Messages (50 sq. ft.)

Cabinet

1/8" aluminum painted Akzo Nobel Silver Satin page 359 A4. Tamper-proof stainless steel hardware for service access. Inside cabinet painted Spraylat Sign Coatings Starbrite White EF (or approved alternative reflective paint). Provide baffles to direct and maximize internal lighting through face messages.

Sign Faces

1/8" aluminum routed messages and logos with backed up white translucent polycarbonate, surface mounted 3M Translucent Bright Blue 3630-167 vinyl & PMS 534 C Vinyl.

Base Cap

1/8" aluminum painted Akzo Nobel Silver Satin page 359 A4.

Base Cladding

Masonry to match architecture of facility/site. Type - Queensland Dimensional Limestone Stone Veneer on aluminum tube frame.

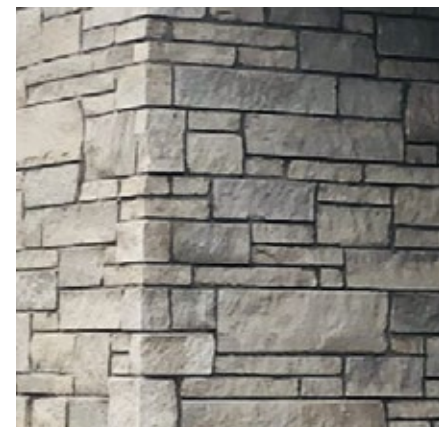
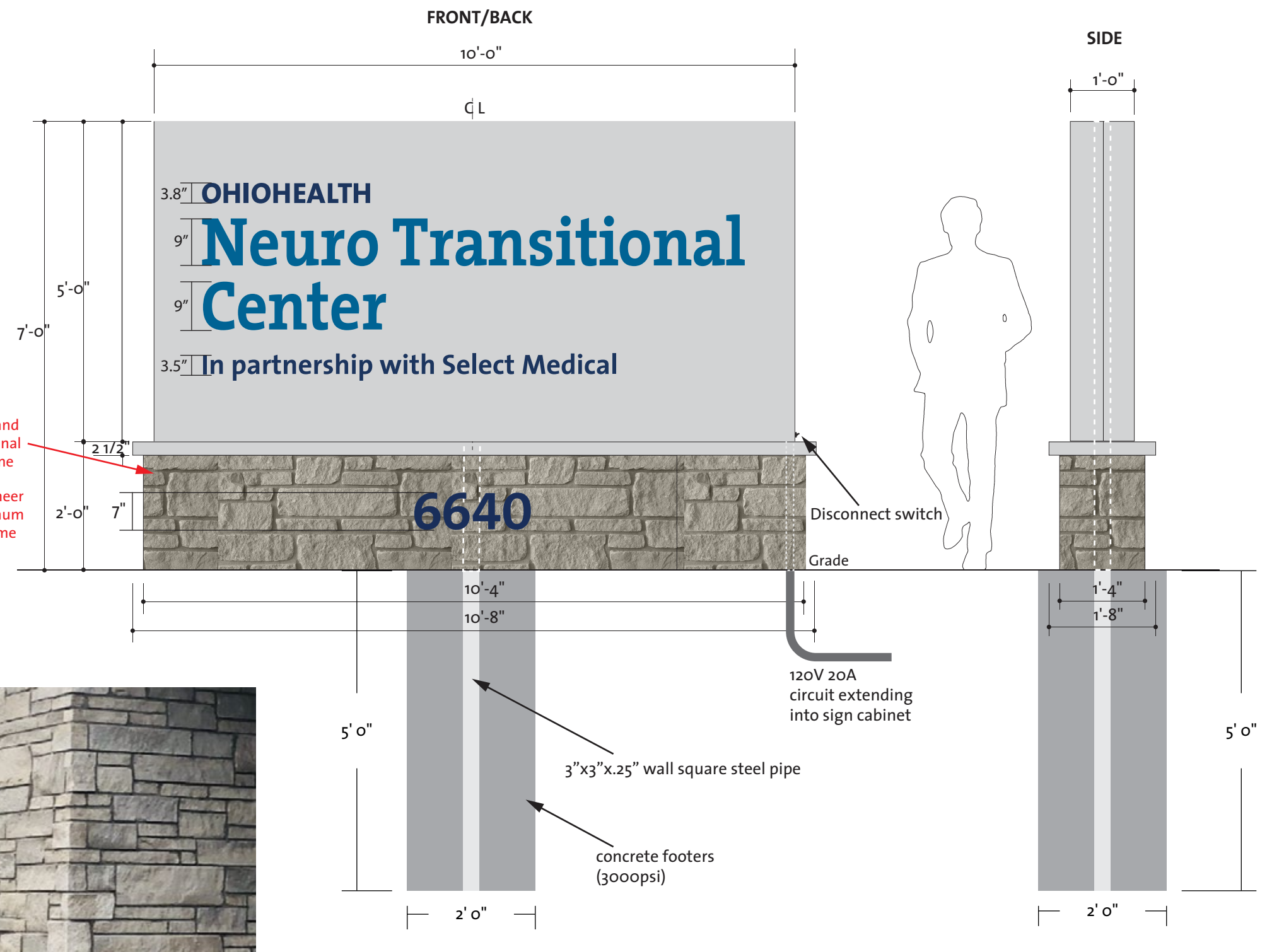
Address

1/2" acrylic, painted to match PMS 534C, centered on monument base.

Internal Illumination

High output fluorescent T8 lamps positioned for optimal light output with even illumination. Also estimate alternative Sloan V Series cool white (7200K) LEDs at 85 lumens per foot, recommended for distances of 3" to 5" depth as optimal.

- Akzo Nobel Sign 4374.
- Akzo Nobel ANP 5152.
- Akzo Nobel Silver Satin page 359 A4



Queensland Dimensional Limestone Example

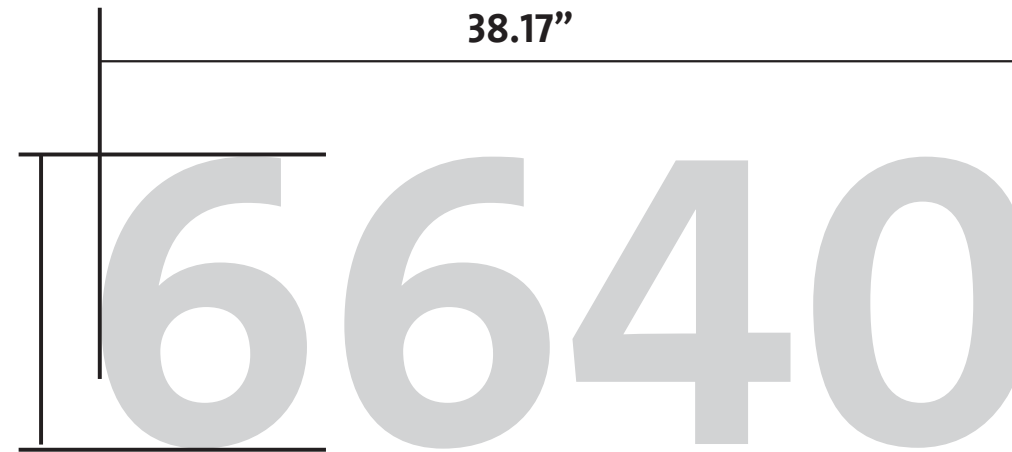
Building Address - 38.17"W X 1'-0"H

QTY 1

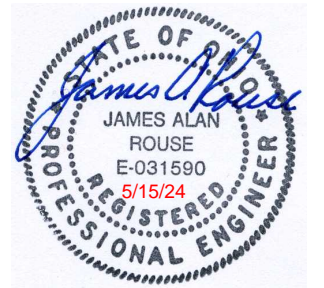
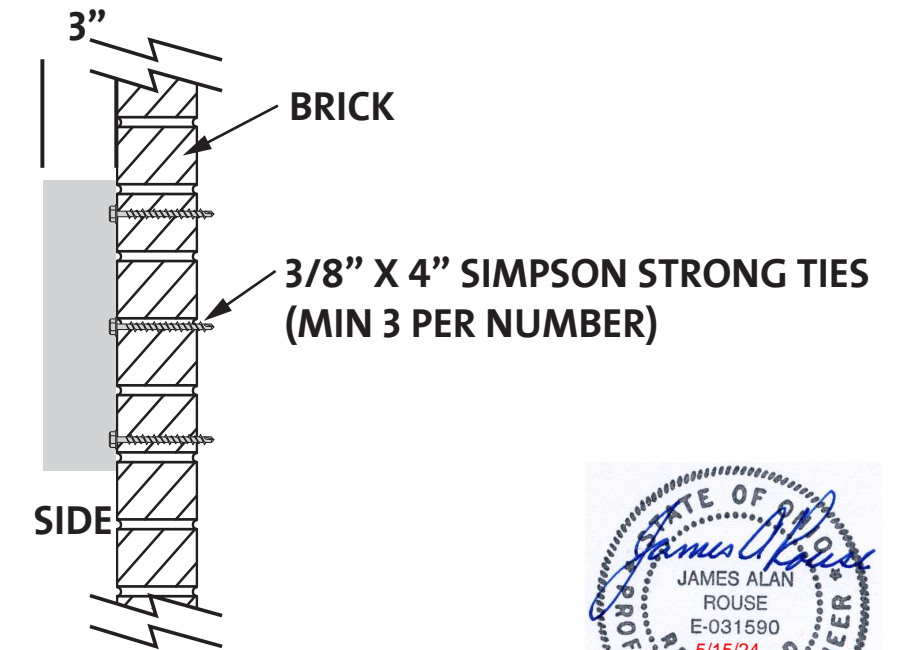
3" deep aluminum channel numbers and returns painted Akzo Nobel Silver Satin page 359 A4.
 Mounted to brick using 3/8" X 4" Simpson Strong Ties (min. 3 per number)

Akzo Nobel Silver Satin page 359 A4

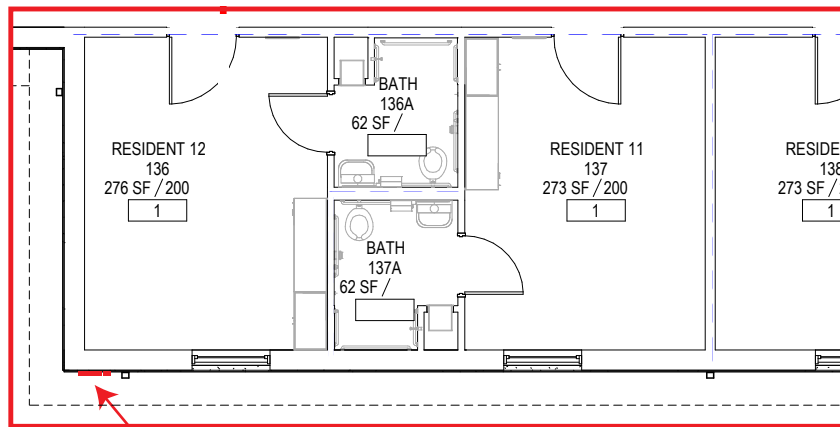
1'-0"
CAP
HEIGHTS



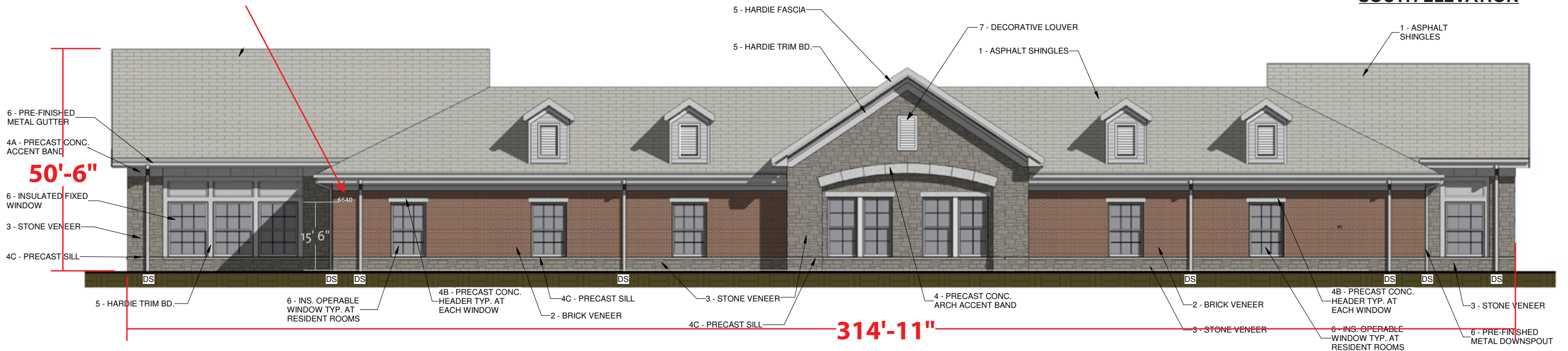
FRONT



2024 OBC - ASCE 7-16
 * Wind Load - Risk Category II:
 Speed - V = 107 mph
 Exposure B



Address Location



Client: OhioHealth | Dublin Neurotransitional Center Drawing Date: 05-15-24
 Project: Monument Sign Drawing #: 24-165 SP: DH D: BW

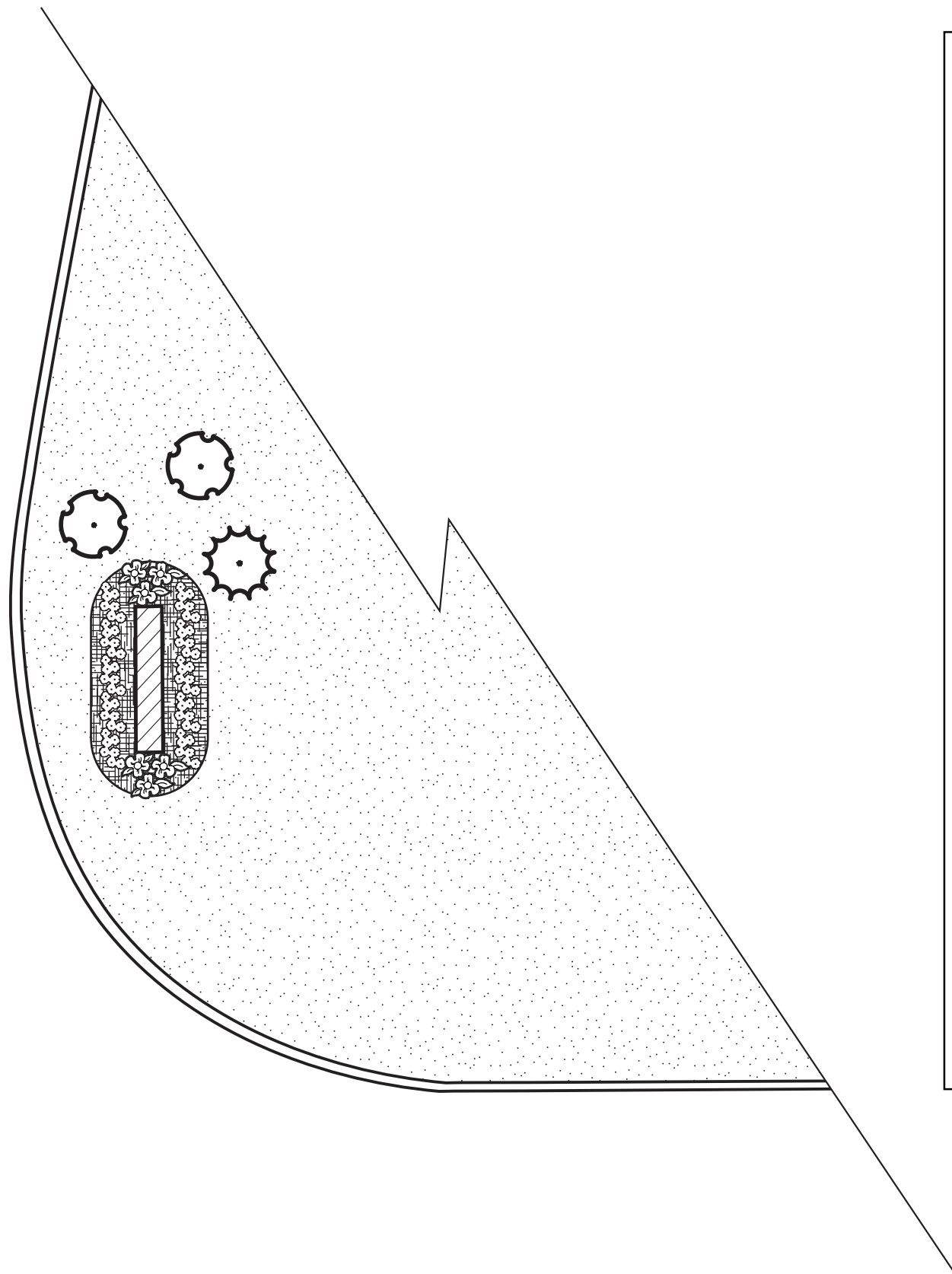


This sign is intended to be installed in accordance of article 600 of the National Electric Code and or other applicable local codes. This includes proper grounding and bonding of the sign.





AS-DRAWN APPROVAL:

Client Signature: _____ Date: _____

Morrison will not begin production until client signature is received on proof. Your signature indicates responsibility for the accuracy of this proof and any adjustments after signature is received will incur additional costs and/or delays.



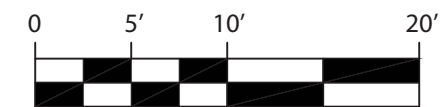
MONUMENT SIGN LANDSCAPE PLAN

- 
 QTY (1) *Thuja occidentalis 'Rheingold'* 24" Ht.
 Rheingold Arborvitae
- 
 QTY (2) *Viburnum carlesii 'Cayuga'* 30" Ht.
 Cayuga Koreanspice Viburnum
- 
 QTY (10) Moss Phlox 6" Ht.
- 
 QTY (2) Black Eye Susans 36" Ht.

 Grass

 Shredded Hardwood Mulch Bed

 Sign



1 inch = 10 feet