

---

# Communicating Your Brand



**CLIENT:**



**PROJECT NAME:**

Dean Insurance Group  
Bracket Sign

**PROJECT LOCATION:**

37 W Bridge St.,  
Dublin, OH 43017, USA

**SALES CONTACT:**

Margie Hegg • 614.410.5354  
margie@americansignstudio.com

24" w x 30" t 0.75" d PVC Panel with  
1/2" Acrylic Dimensional Logos and Text.

PVC Panel Painted to Match Sherwin-  
Williams SW6258 Tricorn Black.

24" w x 12" t 0.75" d PVC Panel with  
1/2" Acrylic Dimensional Logos and Text.  
Hung Below Top Panel

Hung from Custom Bracket Mounted to  
East Stone Wall with Heavy Duty TapCon  
Screws

**PLEASE CHECK YOUR  
PROOF CAREFULLY**

Before giving approval, please check your  
proof carefully, verifying all information  
such as spelling, measurements,  
punctuation, numbers, and graphics. The  
final verification for accuracy of all  
information is your responsibility.

Please be aware that a monitor displays  
RGB color, while print uses CMYK. Colors  
will vary slightly due to media, screen  
calibration, lighting and other  
atmospheric conditions.

**EXISTING**



**PROPOSED**



**CLIENT:**  DEAN INSURANCE GROUP

**PROJECT NAME:**  
Dean Insurance Group  
Bracket Sign

**PROJECT LOCATION:**  
37 W Bridge St.,  
Dublin, OH 43017, USA

**SALES CONTACT:**  
Margie Hegg • 614.410.5354  
margie@americansignstudio.com

24" w x 30" t 0.75" d PVC Panel with  
1/2" Acrylic Dimensional Logos and Text.

PVC Panel Painted to Match Sherwin-  
Williams SW6258 Tricorn Black.

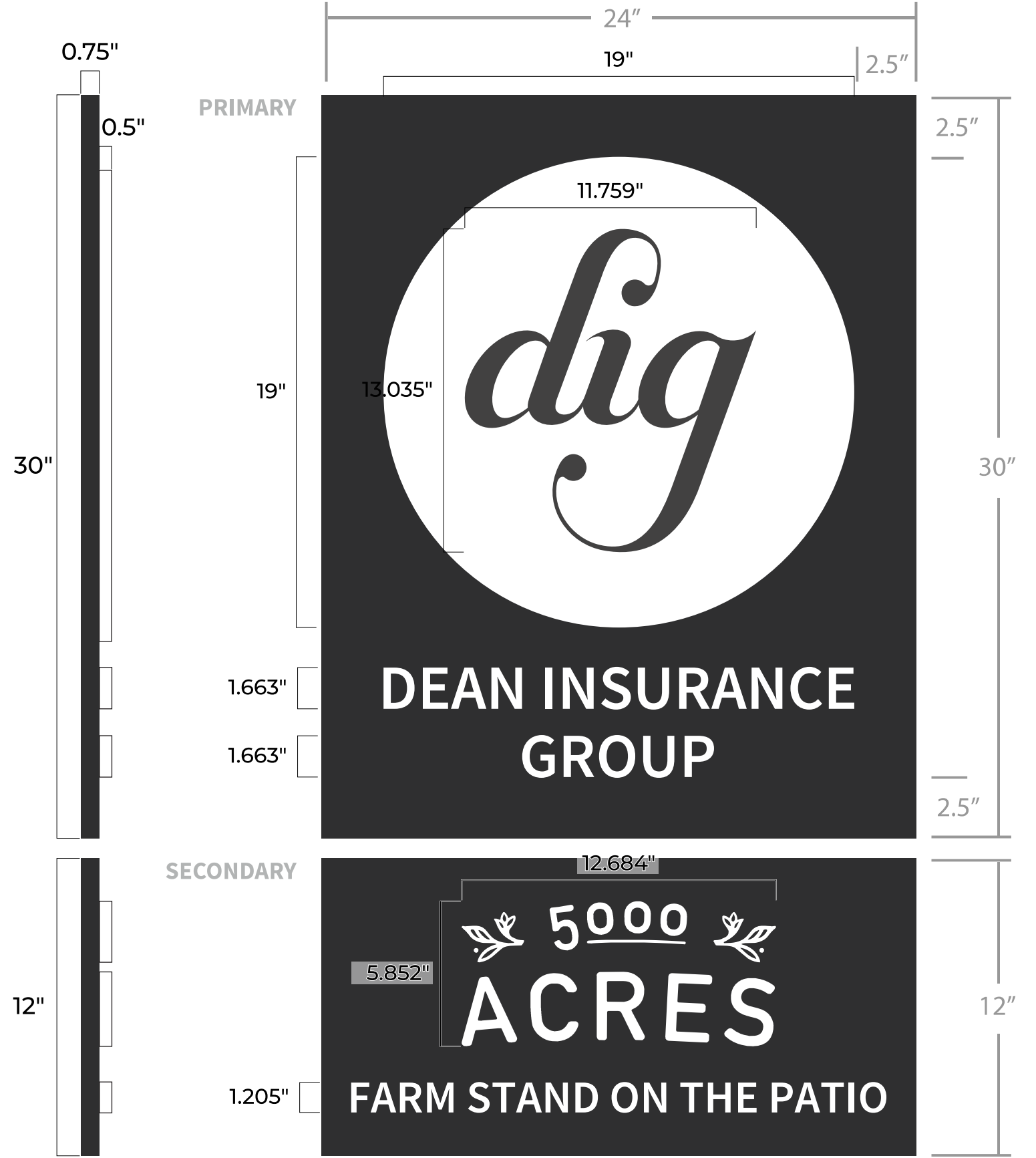
24" w x 12" t 0.75" d PVC Panel with  
1/2" Acrylic Dimensional Logos and Text.  
Hung Below Top Panel

Hung from Custom Bracket Mounted to  
East Stone Wall with Heavy Duty TapCon  
Screws

**PLEASE CHECK YOUR  
PROOF CAREFULLY**

Before giving approval, please check your  
proof carefully, verifying all information  
such as spelling, measurements,  
punctuation, numbers, and graphics. The  
final verification for accuracy of all  
information is your responsibility.

Please be aware that a monitor displays  
RGB color, while print uses CMYK. Colors  
will vary slightly due to media, screen  
calibration, lighting and other  
atmospheric conditions.



CLIENT:



PROJECT NAME:

Dean Insurance Group  
Bracket Sign

PROJECT LOCATION:

37 W Bridge St.,  
Dublin, OH 43017, USA

SALES CONTACT:

Margie Hegg · 614.410.5354  
margie@americansignstudio.com

24" w x 30" t 0.75" d PVC Panel with  
1/2" Acrylic Dimensional Logos and Text.

PVC Panel Painted to Match Sherwin-  
Williams SW6258 Tricorn Black.

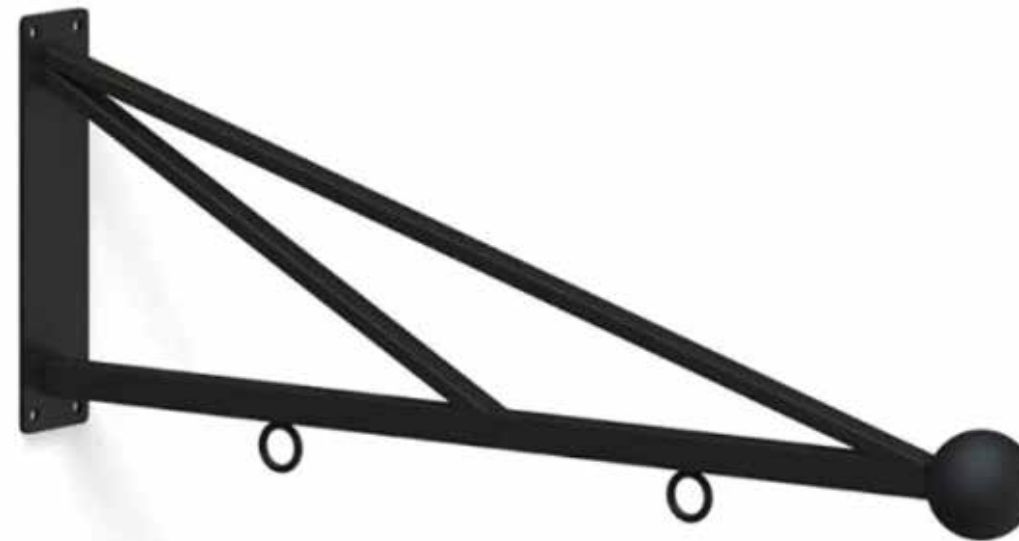
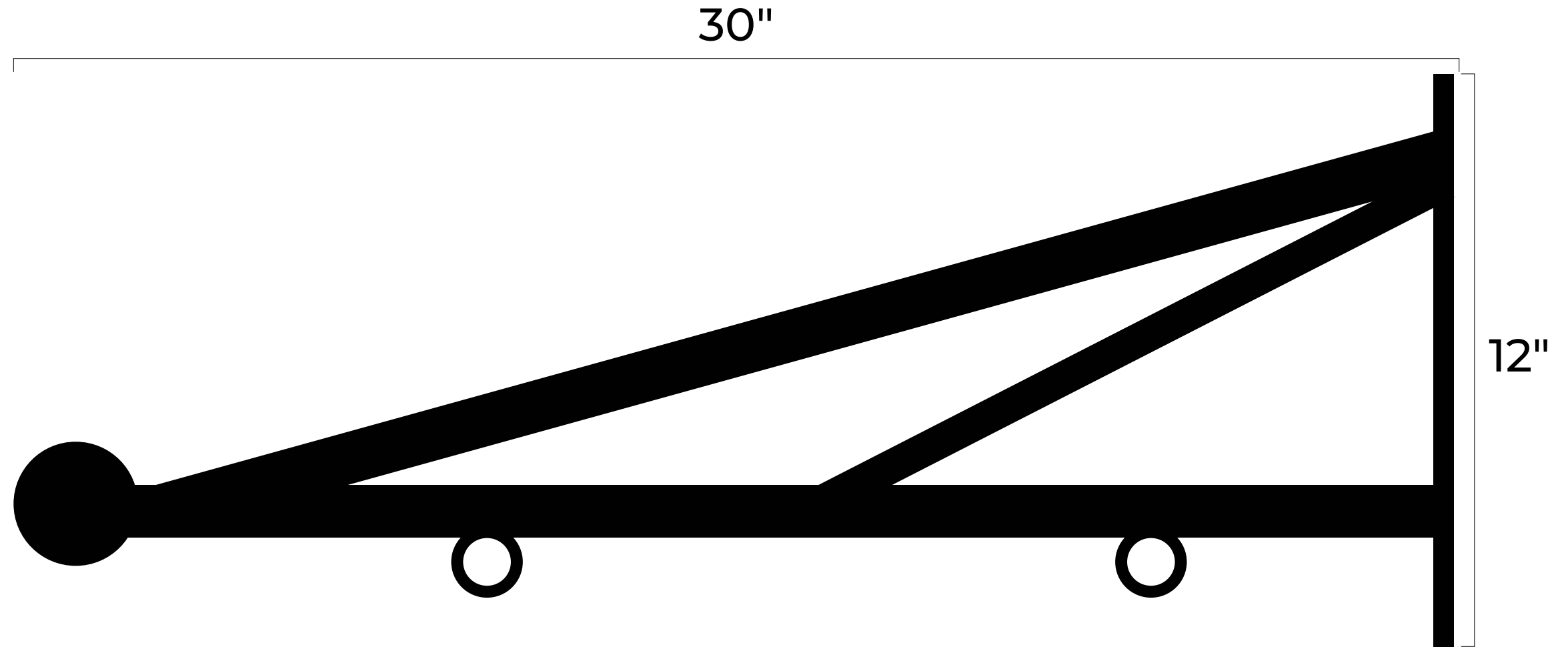
24" w x 12" t 0.75" d PVC Panel with  
1/2" Acrylic Dimensional Logos and Text.  
Hung Below Top Panel

Hung from Custom Bracket Mounted to  
East Stone Wall with Heavy Duty TapCon  
Screws

**PLEASE CHECK YOUR  
PROOF CAREFULLY**

Before giving approval, please check your  
proof carefully, verifying all information  
such as spelling, measurements,  
punctuation, numbers, and graphics. The  
final verification for accuracy of all  
information is your responsibility.

Please be aware that a monitor displays  
RGB color, while print uses CMYK. Colors  
will vary slightly due to media, screen  
calibration, lighting and other  
atmospheric conditions.



**CLIENT:**



**PROJECT NAME:**

Dean Insurance Group  
Bracket Sign

**PROJECT LOCATION:**

37 W Bridge St.,  
Dublin, OH 43017, USA

**SALES CONTACT:**

Margie Hegg · 614.410.5354  
margie@americansignstudio.com

24" w x 30" t 0.75" d PVC Panel with  
1/2" Acrylic Dimensional Logos and Text.

PVC Panel Painted to Match Sherwin-  
Williams SW6258 Tricorn Black.

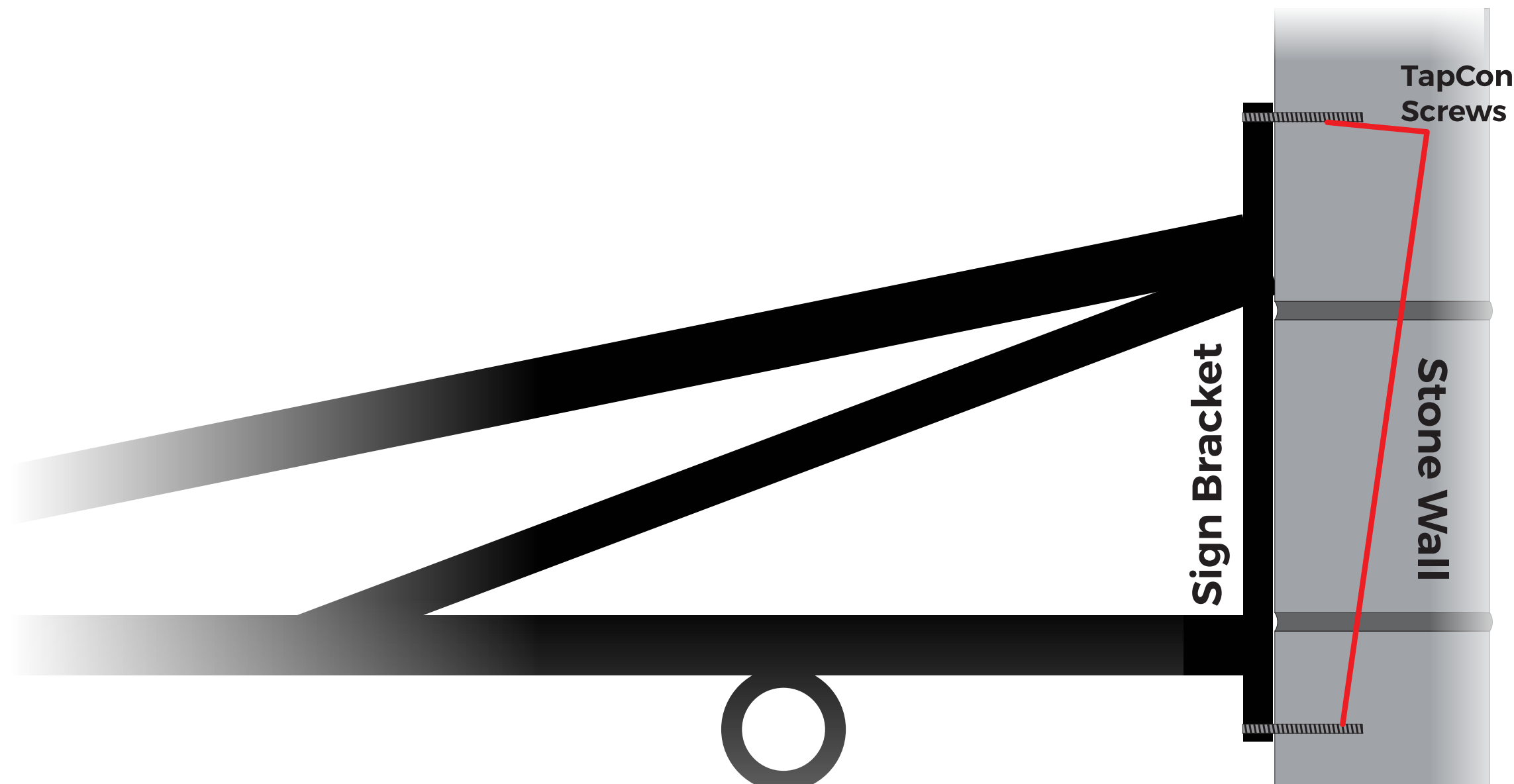
24" w x 12" t 0.75" d PVC Panel with  
1/2" Acrylic Dimensional Logos and Text.  
Hung Below Top Panel

Hung from Custom Bracket Mounted to  
East Stone Wall with Heavy Duty TapCon  
Screws

**PLEASE CHECK YOUR  
PROOF CAREFULLY**

Before giving approval, please check your proof carefully, verifying all information such as spelling, measurements, punctuation, numbers, and graphics. The final verification for accuracy of all information is your responsibility.

Please be aware that a monitor displays RGB color, while print uses CMYK. Colors will vary slightly due to media, screen calibration, lighting and other atmospheric conditions.



CLIENT:  DEAN INSURANCE GROUP

PROJECT NAME:  
Dean Insurance Group  
Bracket Sign

PROJECT LOCATION:  
37 W Bridge St.,  
Dublin, OH 43017, USA

SALES CONTACT:  
Margie Hegg • 614.410.5354  
margie@americansignstudio.com

24" w x 30" t 0.75" d PVC Panel with  
1/2" Acrylic Dimensional Logos and Text.

PVC Panel Painted to Match Sherwin-  
Williams SW6258 Tricorn Black.

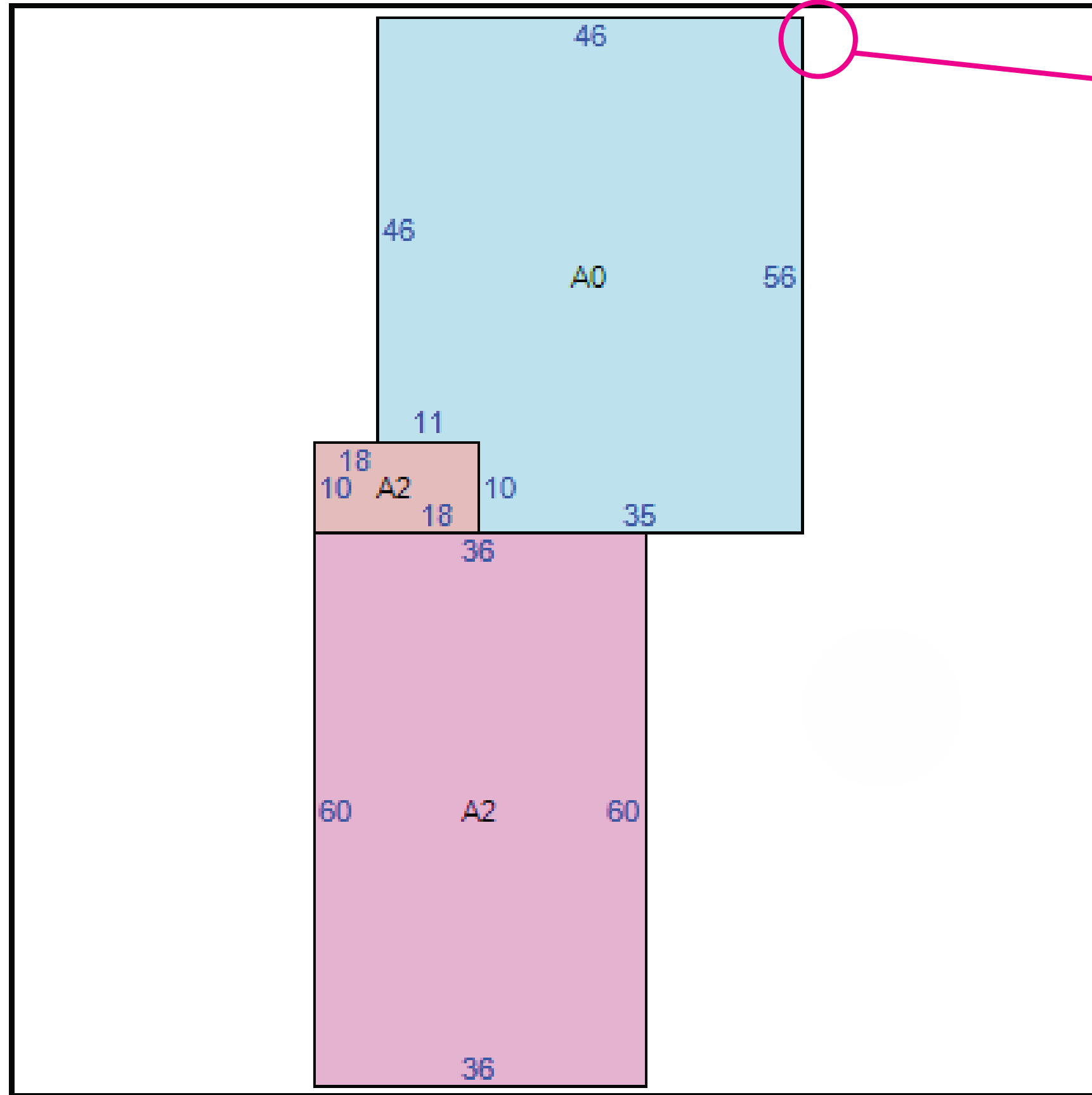
24" w x 12" t 0.75" d PVC Panel with  
1/2" Acrylic Dimensional Logos and Text.  
Hung Below Top Panel

Hung from Custom Bracket Mounted to  
East Stone Wall with Heavy Duty TapCon  
Screws

**PLEASE CHECK YOUR  
PROOF CAREFULLY**

Before giving approval, please check your  
proof carefully, verifying all information  
such as spelling, measurements,  
punctuation, numbers, and graphics. The  
final verification for accuracy of all  
information is your responsibility.

Please be aware that a monitor displays  
RGB color, while print uses CMYK. Colors  
will vary slightly due to media, screen  
calibration, lighting and other  
atmospheric conditions.



**SIGN  
LOCATION**



CLIENT:



PROJECT NAME:

Dean Insurance Group  
Bracket Sign

PROJECT LOCATION:

37 W Bridge St.,  
Dublin, OH 43017, USA

SALES CONTACT:

Margie Hegg • 614.410.5354  
margie@americansignstudio.com

24" w x 30" t 0.75" d PVC Panel with  
1/2" Acrylic Dimensional Logos and Text.

PVC Panel Painted to Match Sherwin-  
Williams SW6258 Tricorn Black.

24" w x 12" t 0.75" d PVC Panel with  
1/2" Acrylic Dimensional Logos and Text.  
Hung Below Top Panel

Hung from Custom Bracket Mounted to  
East Stone Wall with Heavy Duty TapCon  
Screws

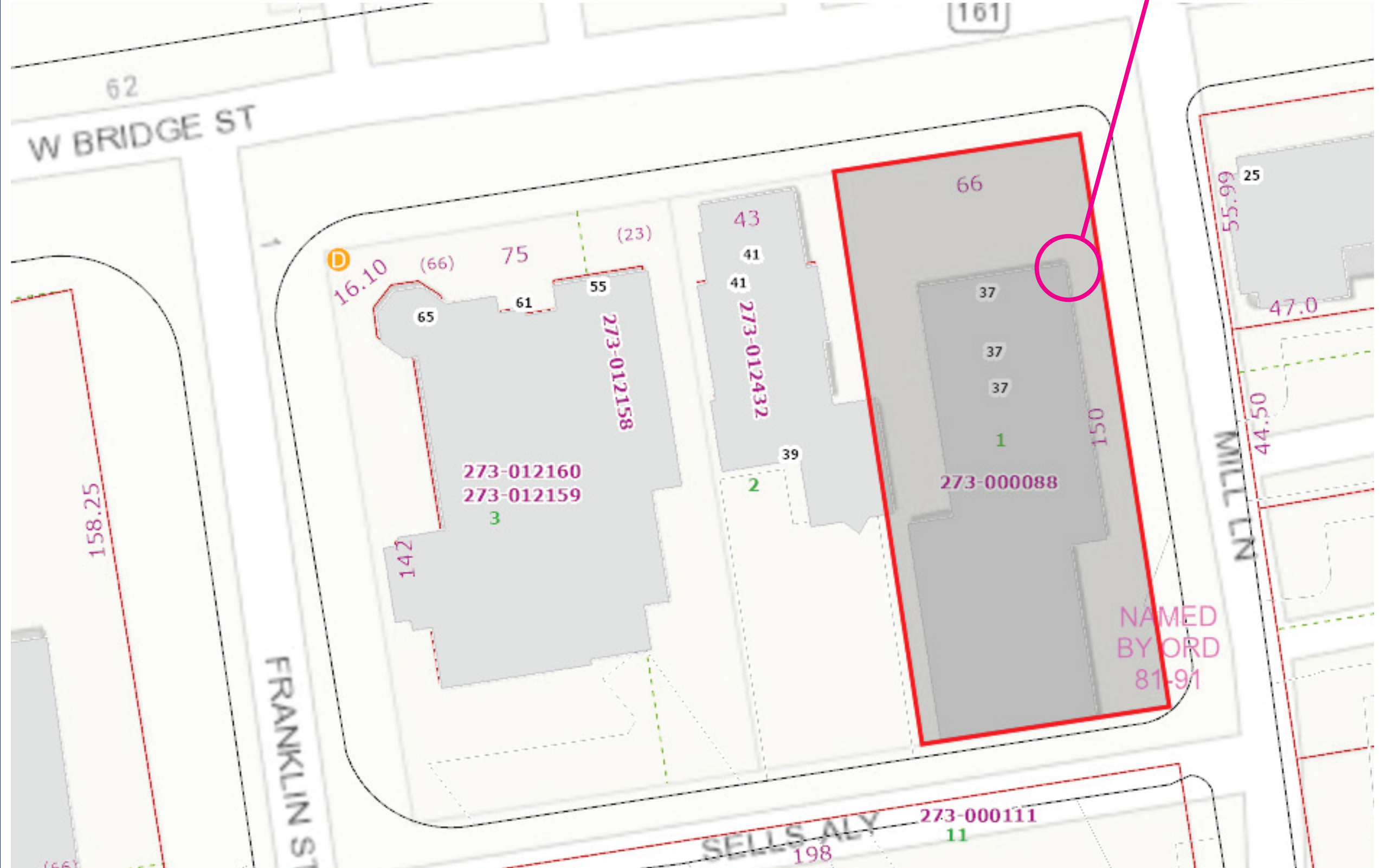
PLEASE CHECK YOUR  
PROOF CAREFULLY

Before giving approval, please check your  
proof carefully, verifying all information  
such as spelling, measurements,  
punctuation, numbers, and graphics. The  
final verification for accuracy of all  
information is your responsibility.

Please be aware that a monitor displays  
RGB color, while print uses CMYK. Colors  
will vary slightly due to media, screen  
calibration, lighting and other  
atmospheric conditions.



# SIGN LOCATION



**CLIENT:**



**PROJECT NAME:**

Dean Insurance Group  
Bracket Sign

**PROJECT LOCATION:**

37 W Bridge St.,  
Dublin, OH 43017, USA

**SALES CONTACT:**

Margie Hegg • 614.410.5354  
margie@americansignstudio.com

24" w x 30" t 0.75" d PVC Panel with  
1/2" Acrylic Dimensional Logos and Text.

PVC Panel Painted to Match Sherwin-  
Williams SW6258 Tricorn Black.

24" w x 12" t 0.75" d PVC Panel with  
1/2" Acrylic Dimensional Logos and Text.  
Hung Below Top Panel

Hung from Custom Bracket Mounted to  
East Stone Wall with Heavy Duty TapCon  
Screws

**PLEASE CHECK YOUR  
PROOF CAREFULLY**

Before giving approval, please check your  
proof carefully, verifying all information  
such as spelling, measurements,  
punctuation, numbers, and graphics. The  
final verification for accuracy of all  
information is your responsibility.

Please be aware that a monitor displays  
RGB color, while print uses CMYK. Colors  
will vary slightly due to media, screen  
calibration, lighting and other  
atmospheric conditions.

