

**QTY ( 1 ) Double-faced Internally Illuminated Horizontal Monument Two Messages (50 sq. ft.)**

**Cabinet**

1/8" aluminum painted Akzo Nobel Silver Satin page 359 A4. Tamper-proof stainless steel hardware for service access. Inside cabinet painted Spraylat Sign Coatings Starbrite White EF (or approved alternative reflective paint). Provide baffles to direct and maximize internal lighting through face messages.

**Sign Faces**

1/8" aluminum routed messages and logos with backed up white translucent polycarbonate, surface mounted 3M Translucent Bright Blue 3630-167 vinyl & PMS 534 C Vinyl.

**Base Cap**

1/8" aluminum painted Akzo Nobel Silver Satin page 359 A4.

**Base Cladding**

Masonry to match architecture of facility/site. Type - Queensland Dimensional Limestone Stone Veneer on aluminum tube frame.

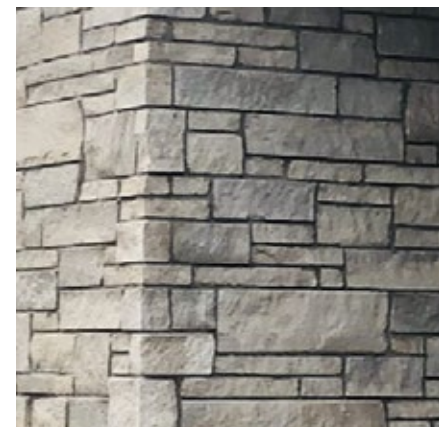
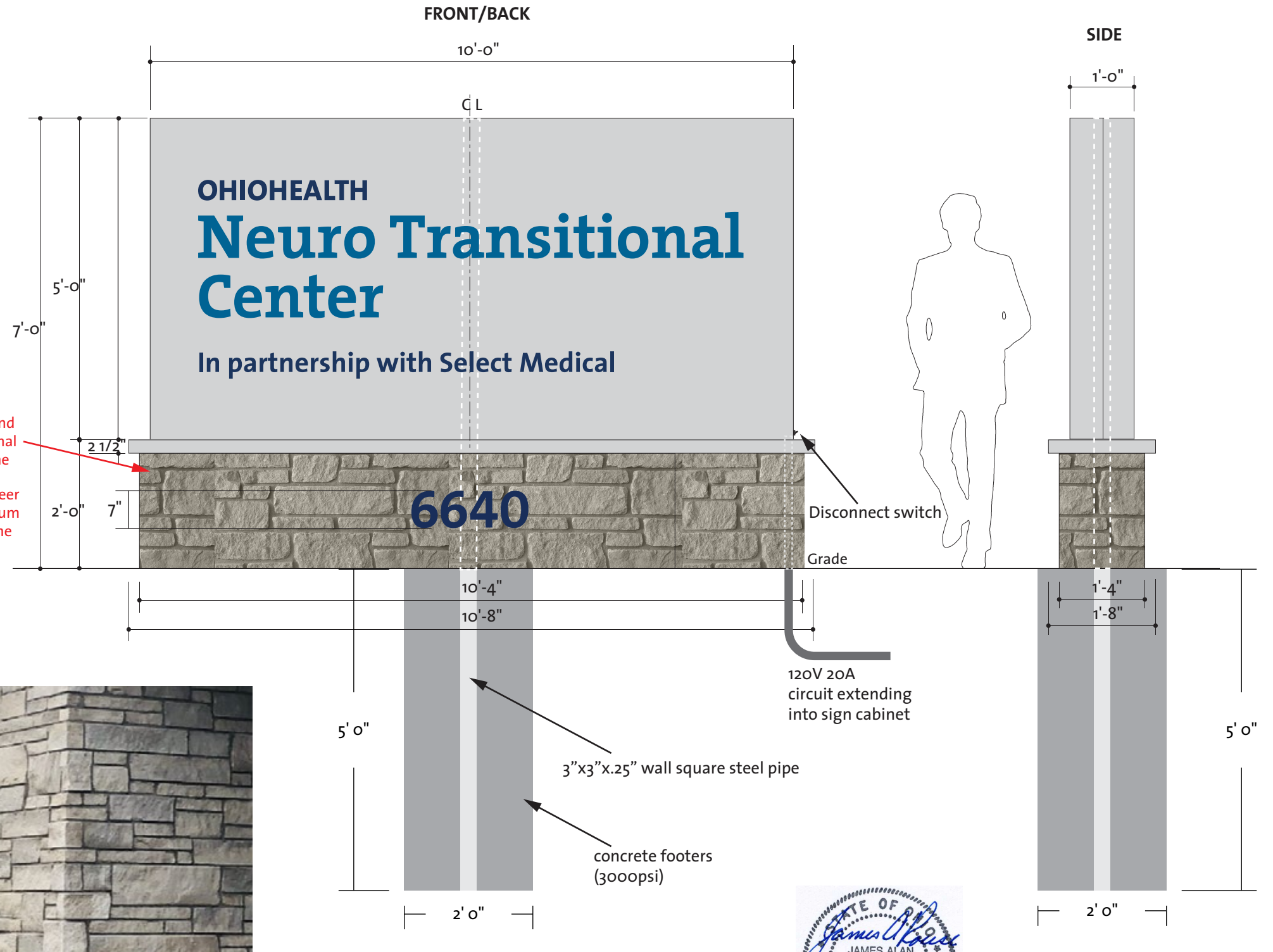
**Address**

1/2" acrylic, painted to match PMS 534C, centered on monument base.

**Internal Illumination**

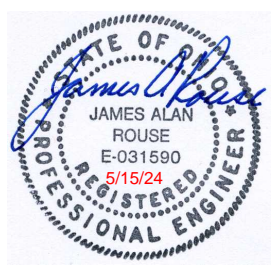
High output fluorescent T8 lamps positioned for optimal light output with even illumination. Also estimate alternative Sloan V Series cool white (7200K) LEDs at 85 lumens per foot, recommended for distances of 3" to 5" depth as optimal.

- 3M Translucent Bright Blue 3630-167 vinyl.
- Approximately PMS 534C. Customer to verify.
- Akzo Nobel Silver Satin page 359 A4



Queensland Dimensional Limestone Example

**2024 OBC - ASCE 7-16**  
 \* Wind Load - Risk Category II:  
 Speed - V = 107 mph  
 Exposure B  
 \* Class 4 Soil with  
 Lateral Bearing = 150 psf/ft



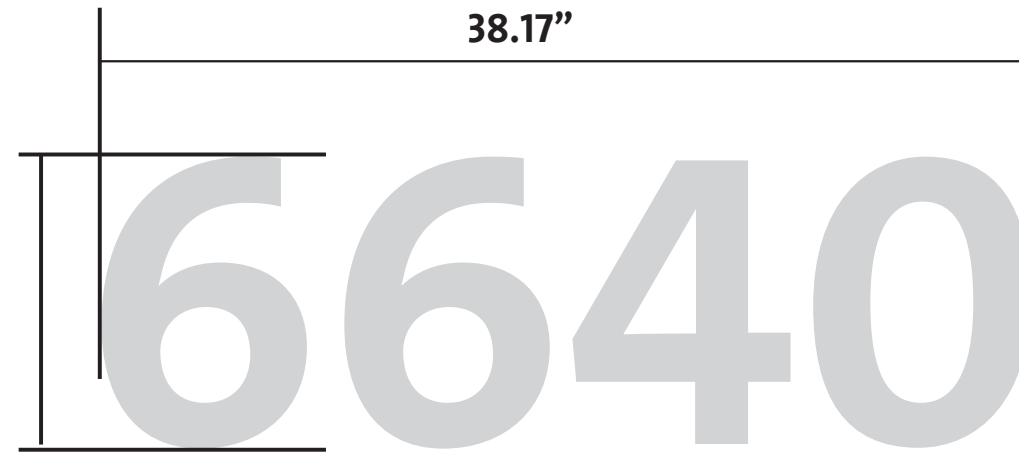
**Building Address - 38.17"W X 1'-0"H**

**QTY 1**

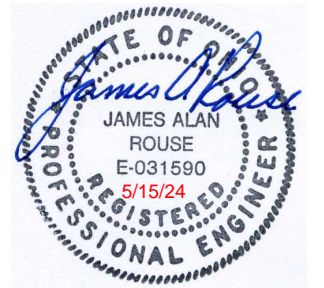
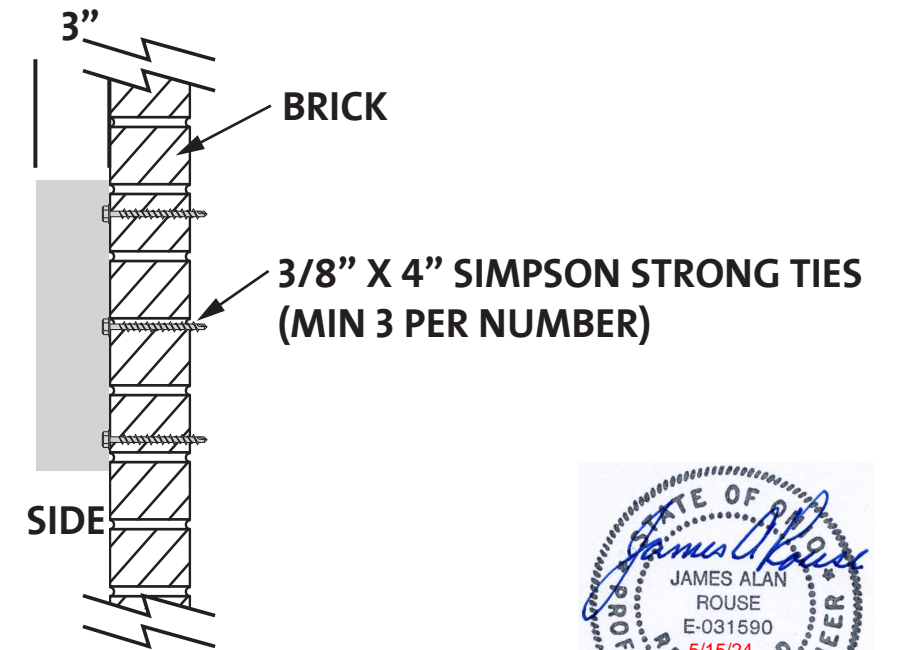
3" deep aluminum channel numbers and returns painted Akzo Nobel Silver Satin page 359 A4.  
 Mounted to brick using 3/8" X 4" Simpson Strong Ties (min. 3 per number)

Akzo Nobel Silver Satin page 359 A4

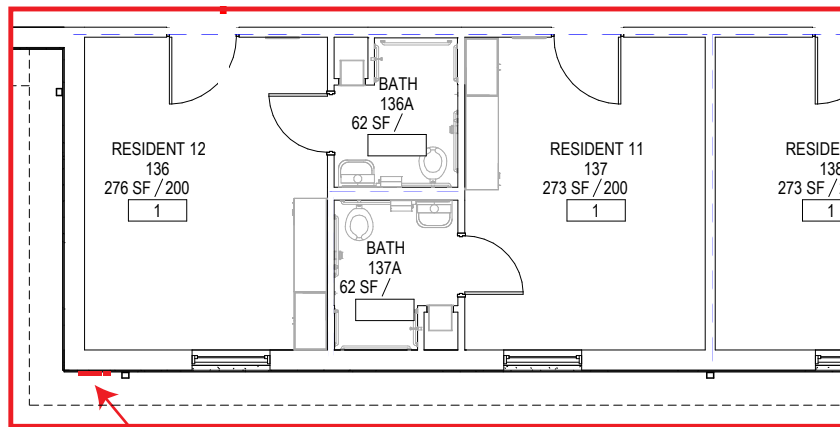
**1'-0"  
CAP  
HEIGHTS**



**FRONT**

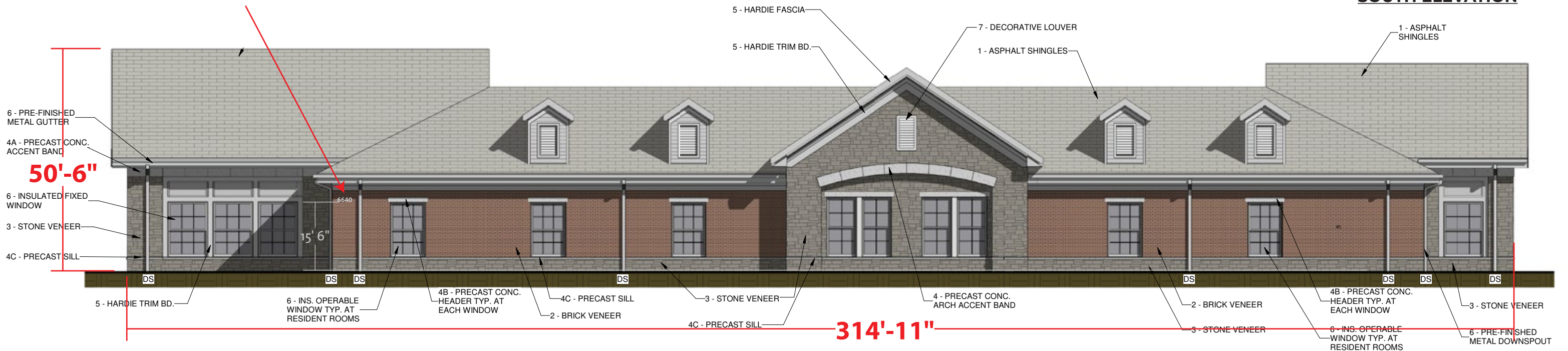


**2024 OBC - ASCE 7-16**  
 \* Wind Load - Risk Category II:  
 Speed - V = 107 mph  
 Exposure B



**Address Location**

**SOUTH ELEVATION**



Client: OhioHealth | Dublin Neurotransitional Center Drawing Date: 05-15-24  
 Project: Monument Sign Drawing #: 24-165 SP: DH D: BW



This sign is intended to be installed in accordance of article 600 of the National Electric Code and or other applicable local codes. This includes proper grounding and bonding of the sign.

AS-DRAWN APPROVAL:

Client Signature: \_\_\_\_\_ Date: \_\_\_\_\_

Morrison will not begin production until client signature is received on proof. Your signature indicates responsibility for the accuracy of this proof and any adjustments after signature is received will incur additional costs and/or delays.