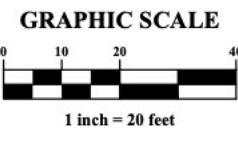
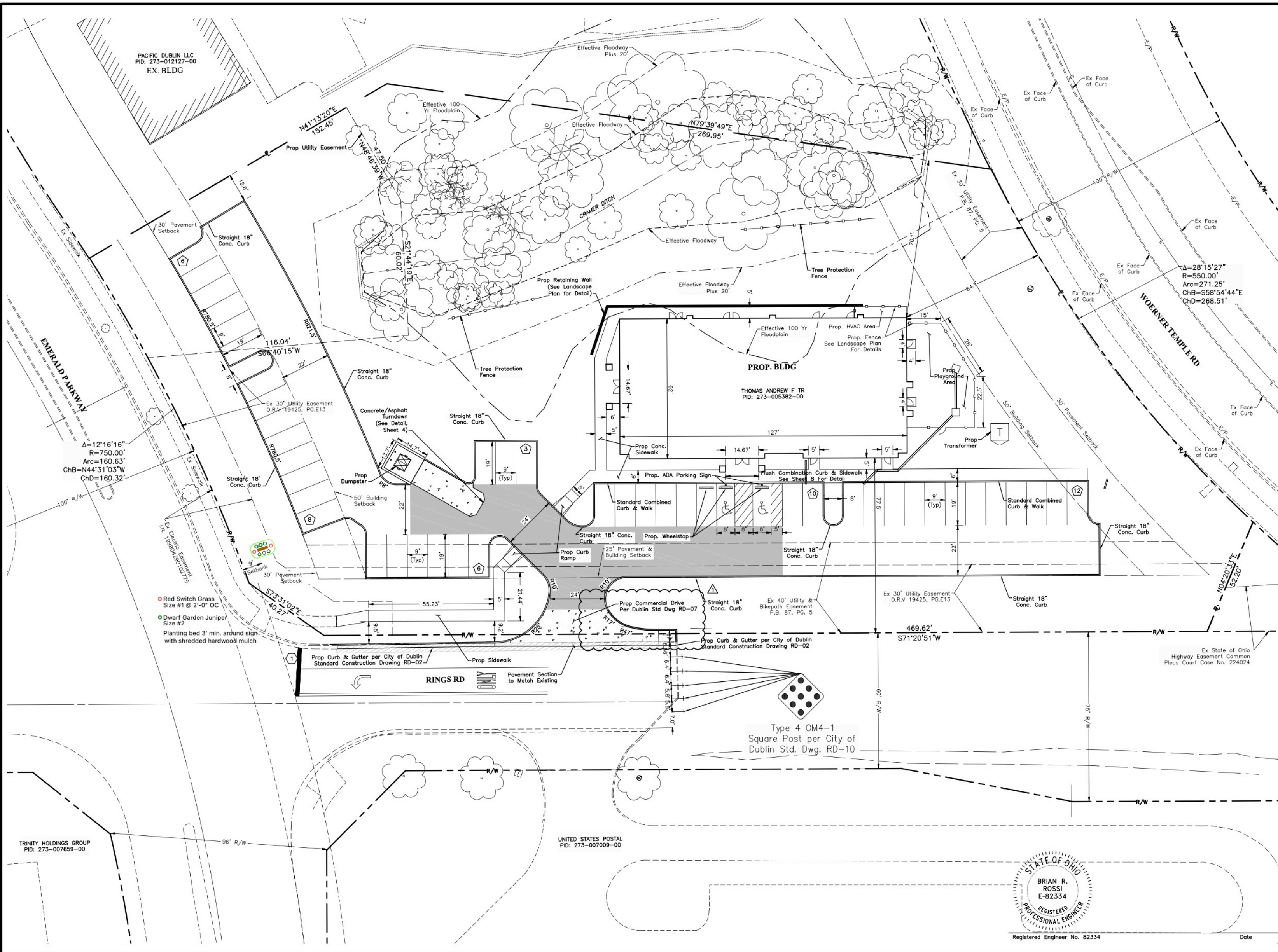


I:\20190874\Drawings\45Sheets\Private Site Improvement Plan\20190874\_Site Staking Plan.dwg, Last Saved By: kcorleton, 5/24/2023 8:15 AM, Last Printed By: Corleton, Kallyn, 5/24/2023 8:48 AM (No Xrefs)



**NOTES:**  
 All radii are 5' unless otherwise noted.  
 A LOMR is in process for Cramer ditch to adjust the floodplain and floodway.

**CODED NOTES:**  
 ① Per Policy No. 08-013, the necessary intersection sight distance is 470ft. The limits of the sight distance triangles for left turns are contained within the right-of-way.

- LEGEND**
- Light Duty Pavement, See Detail, Sheet 4
  - Heavy Duty Pavement, See Detail, Sheet 4
  - Concrete Pavement, See Detail, Sheet 4
  - Proposed Permanent Pavement Replacement, See Detail, Sheet 3
  - Parking Count

**SITE DATA**

Zoned PUD: Planned Unit Development District

Total Site Area:	±2.12 Acres
Disturbed Area:	±1.60 Acres
Impervious Area:	±0.74 Acres
Pervious Area:	±1.38 Acres
Building Area:	±7,849 SF
Required Parking: (1 space per Employee + 1 space per 6 Kids: 22 employees +126 kids/6=43)	43 Spaces
Proposed Parking:	45 Spaces
Required Handicap Spaces:	2 Spaces
Provided Handicap Spaces:	2 Spaces

**ADJACENT PROPERTY OWNERS**

THOMAS ANDREW F TR PID: 273-005382-00
PACIFIC DUBLIN LLC PID: 273-012127-00
TUTTLE EMERALD DEVELOPMENT LLC PID: 273-012234-00
DUBLIN YORK PROPERTIES LLC PID: 273-007010-00
UNITED STATES POSTAL PID: 273-007009-00
TRINITY HOLDINGS GROUP PID: 273-007659-00
ARENSTEIN G GREGORY TR PID: 273-012207-00



REVISIONS

MARK	DATE	DESCRIPTION
A	06/24/23	DRIVE ENTRANCE CURB INLET MODIFICATION

CITY OF DUBLIN, FRANKLIN COUNTY, OHIO  
 PRIVATE SITE IMPROVEMENT PLAN  
**MANGO'S PLACE**  
**5600 RINGS RD**  
 SITE STAKING PLAN

DATE: August 29, 2022

SCALE: 1" = 20'

JOB NO.: 2019-0874

SHEET: 6/15



Proudly Serving Central Ohio Since 1954  
 1640 Harmon Ave, Columbus, Ohio, 43223  
 (614) 444-3333 (FAX) 444-3026  
 www.danitesign.com

UL LISTED via STANDARD UL48  
 FILE NO: E60042 DaNITE SIGN CO.

UL APPLIES TO ILLUMINATED SIGNS ONLY.



EXISTING STOREFRONT

COLORS

- PMS 7737 GREEN
- PMS 7665 PURPLE
- SW9542 NATURAL WHITE
- BLACK

APPROVED-CUSTOMER \_\_\_\_\_ DATE \_\_\_\_\_

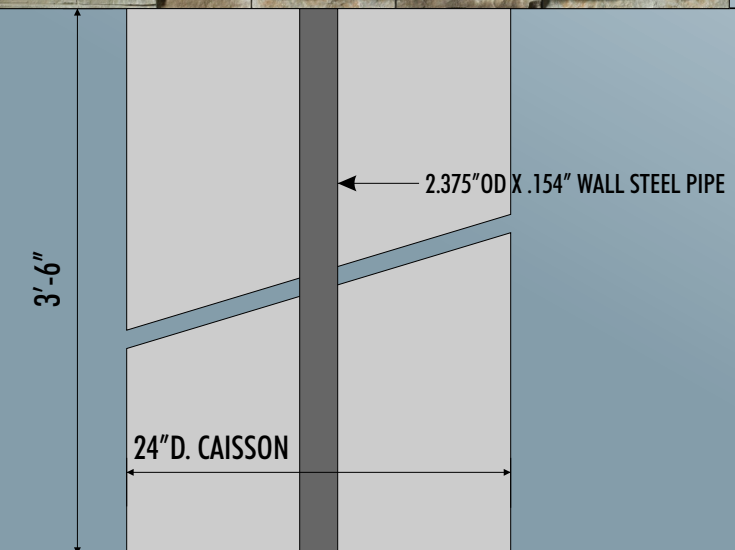
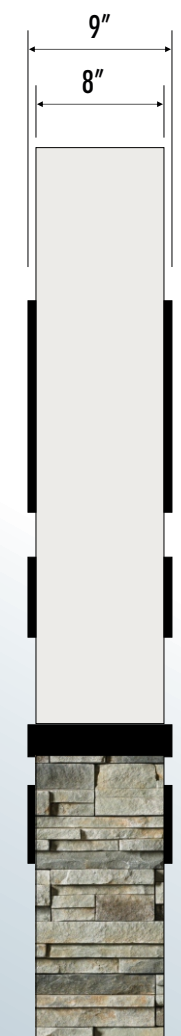
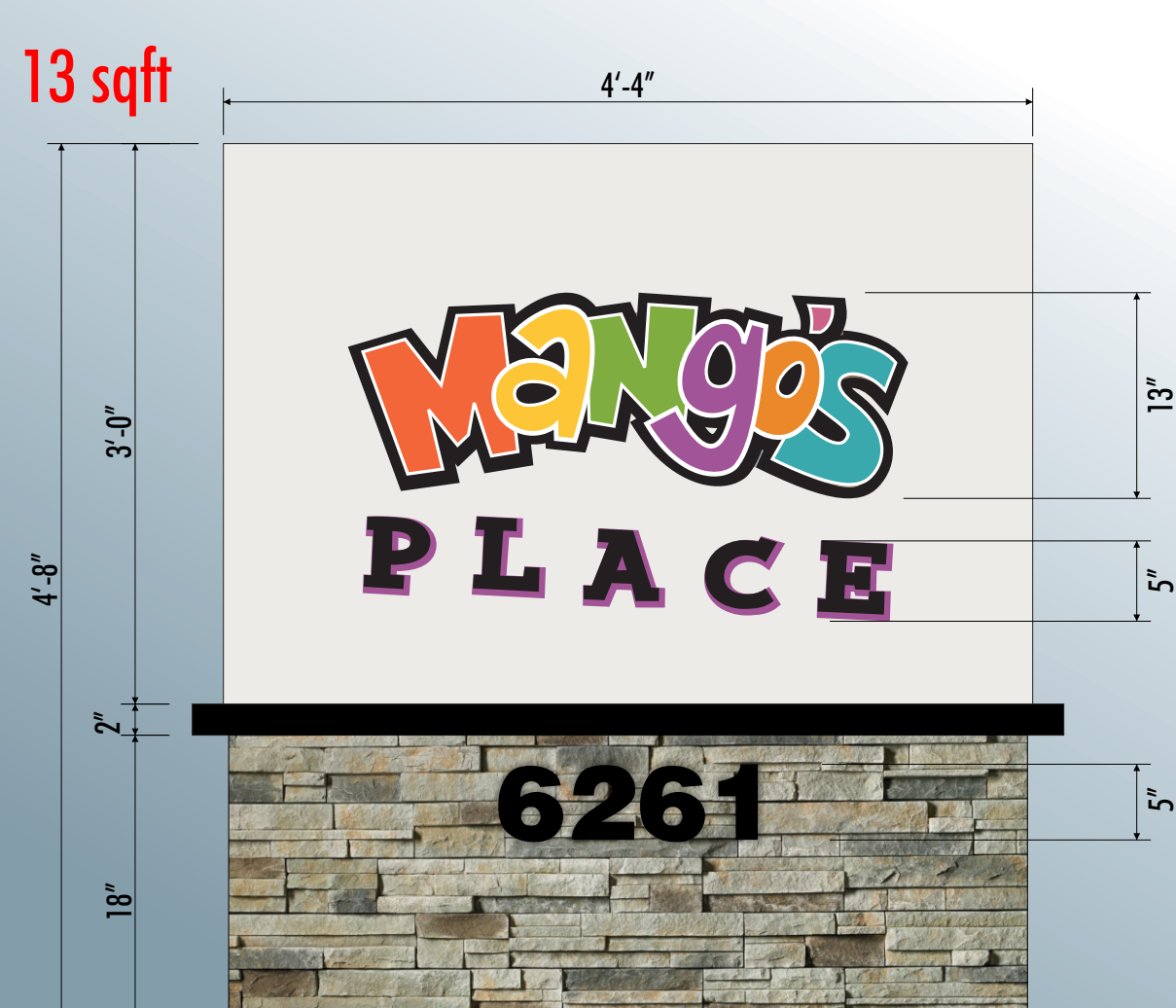


JOB NAME	MANGO'S PLACE	#S1-1323.24 R5
STREET	5600 RINGS RD.	
CITY, STATE	DUBLIN, OH	
SIGN TYPE	MONUMENT SIGN	
DATE	2/27/24	REV. DATE: 7/24/24
FILE NAME	MANGO'S PLACE.CDR	
DIRECTORY	BELLA > 2024 > M	

SCALE AS NOTED SALE CB DESIGNER BY/TK

This project is an original unpublished design concept protected by copyright laws of The United States of America. Prior to sale or print design fees, all visual materials, specifications, annexes and revisions remain the exclusive property of DaNite Sign Company. The use of any part herein to manufacture, sell or adapt this concept to other mediums by unauthorized parties constitutes an actionable plagiarism.

13 sqft



#S1-1323.24 R5: D/F NON-ILLUMINATED MONUMENT SIGN 1" = 1'-0"

- CABINET: FABRICATED ALUMINUM PAINTED SW9542 NATURAL WHITE.
- GRAPHICS: 1/2" THICK ACRYLIC OVERLAID WITH DIGITALLY PRINTED VINYL.
- CAP: FABRICATED ALUM. PAINTED BLACK.
- ADDRESS NUMBERS: 1/2" THICK BLACK PVC.
- FOUNDATION/BASE: STONE VENEER (TO MATCH BUILDING) OVER ALUMINUM ANGLE FRAMEWORK THAT IS COVERED WITH 3/4" TREATED PLYWOOD.

<b>SYMBOL</b>	<b>COMMON NAME</b>	<b>BOTANICAL NAME</b>	<b>QTY</b>	<b>SIZE</b>	<b>REMARKS</b>
SIL	SILVER LINDEN	TILIA TOMENTOSA	15	2.0" CAL	B & B
AMU	AMUR MAPLE	ACER GINNALA	5	2.0" CAL	B & B
HEG	HEDGE MAPLE	ACER CAMPESTRE	19	2.0" CAL	B & B
WHI	WHITE SPRUCE	PICEA GLAUCA	13	6'-0"H MIN	B & B
QCK	QUICKFIRE HYDRANGEA	HYDRANGEA PANICULATA	19	1 GAL	PLANT @ 3'-6" OC
RED	RED SWITCH GRASS	PANICUM VIRGATUM	6	#1	PLANT @ 2'-0" OC
GLD	GOLD COAST JUNIPER	JUNIPERUS CHIENSIS GOLD COAST	11	18"	PLANT @ 3'-0" OC
COM	COMPACT BURNING BUSH	EUONYMUS ALATUS	7	#1	PLANT @ 2'-0" OC
MAI	MAIDEN GRASS	MISCANTHUS SINENSIS GRACILLIMUS	8	#1	PLANT @ 2'-0" OC
DEN	DENSE YEW	TAXUS X MEDIA DENSIFORMIS	49	24"H MIN	PLANT @ 2'-6" OC
TEC	TECHNY ABORVITAE	THUJA OCCIDENTALIS TECHNY	11	4'-0"H MIN	
BOX	GREEN VELVET BOXWOOD	BOXUS X GREEN VELVET	6	1'-6"H MIN	PLANT @ 3'-0" OC
SHR	SHAMROCK INKBERRY	ILEX GLABRA SHAMROCK	3	1'-6"H MIN	PLANT @ 3'-0" OC
SJW	ST. JOHN'S WORT	HYPERICUM CALYGINUM	6	#3	
ASA	FALSE SPIRAEA	ASTILBE AMETHYST	1	STARTER	
ASG	FALSE SPIRAEA	ASTILBE GLUT	1	STARTER	
DAY	DAYLILLIES	HEMEROCALLIS	8	STARTER	
DOG	WHITE DOGWOOD	CORNUS FLORIDA	6	6'-0"H MIN	B & B