

Proudly Serving Central Ohio Since 1954
 1640 Harmon Ave, Columbus, Ohio, 43223
 (614) 444-3333 (FAX) 444-3026
 www.danitesign.com

UL LISTED via STANDARD UL48
 FILE NO: E60042 DaNITE SIGN CO.

UL APPLIES TO ILLUMINATED SIGNS ONLY.



EXISTING STOREFRONT

COLORS

- PMS 7737 GREEN
- PMS 7665 PURPLE
- WHITE
- BLACK

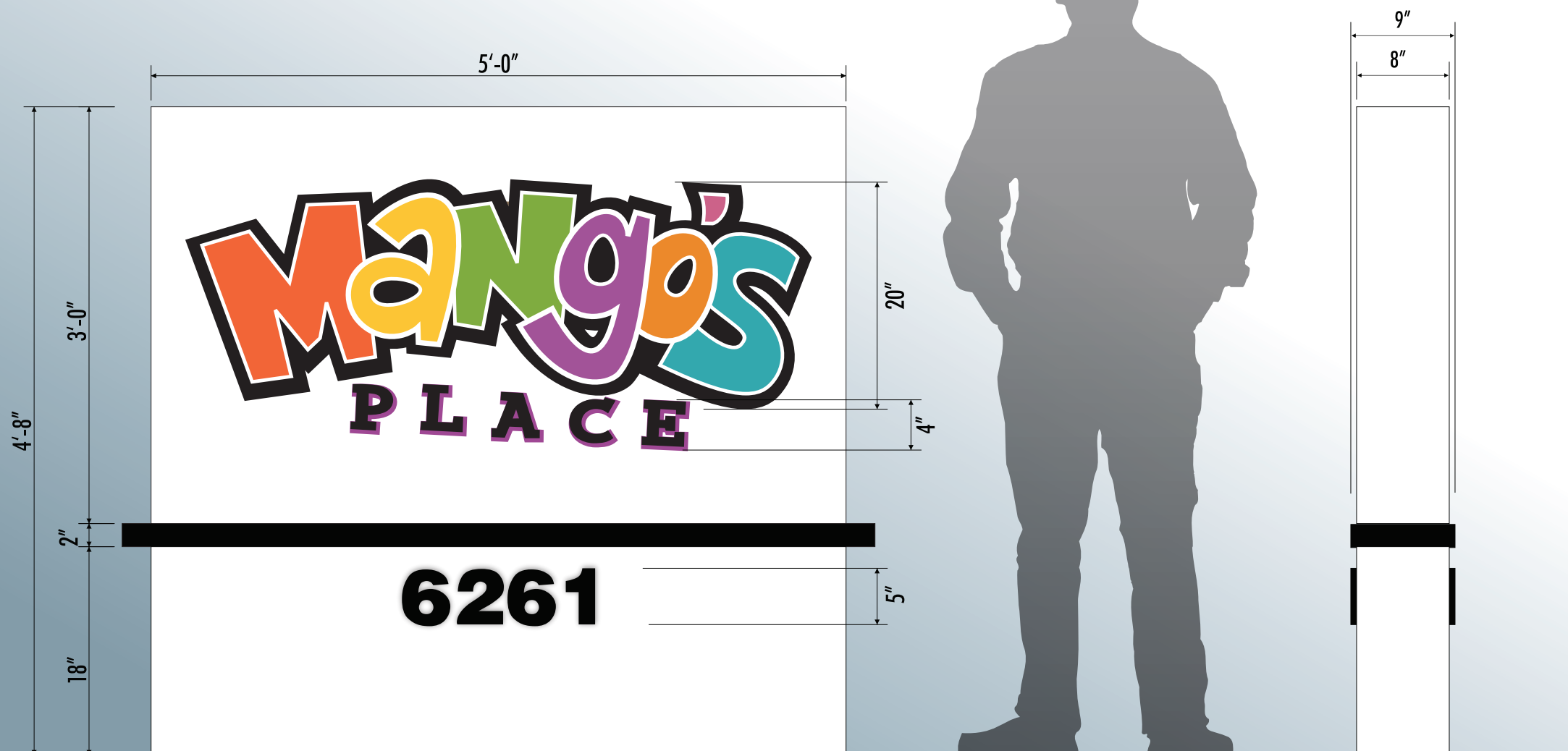
APPROVED-CUSTOMER _____ DATE _____



JOB NAME	MANGO'S PLACE	#S1-1323.24 R3
STREET	5600 RINGS RD.	
CITY, STATE	DUBLIN, OH	
SIGN TYPE	MONUMENT SIGN	
DATE	2/27/24	REV. DATE: 3/14/24
FILE NAME	MANGO'S PLACE.CDR	
DIRECTORY	BELLA > 2024 > M	

SCALE AS NOTED SALE CB DESIGNER BY

This project is an original unpublished design concept protected by copyright laws of The United States of America. Prior to sale or print design fees, all visual materials, specifications, annexes and revisions remain the exclusive property of DaNite Sign Company. The use of any part herein to manufacture, sell or adapt this concept to other mediums by unauthorized parties constitutes an actionable plagiarism.

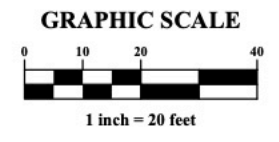
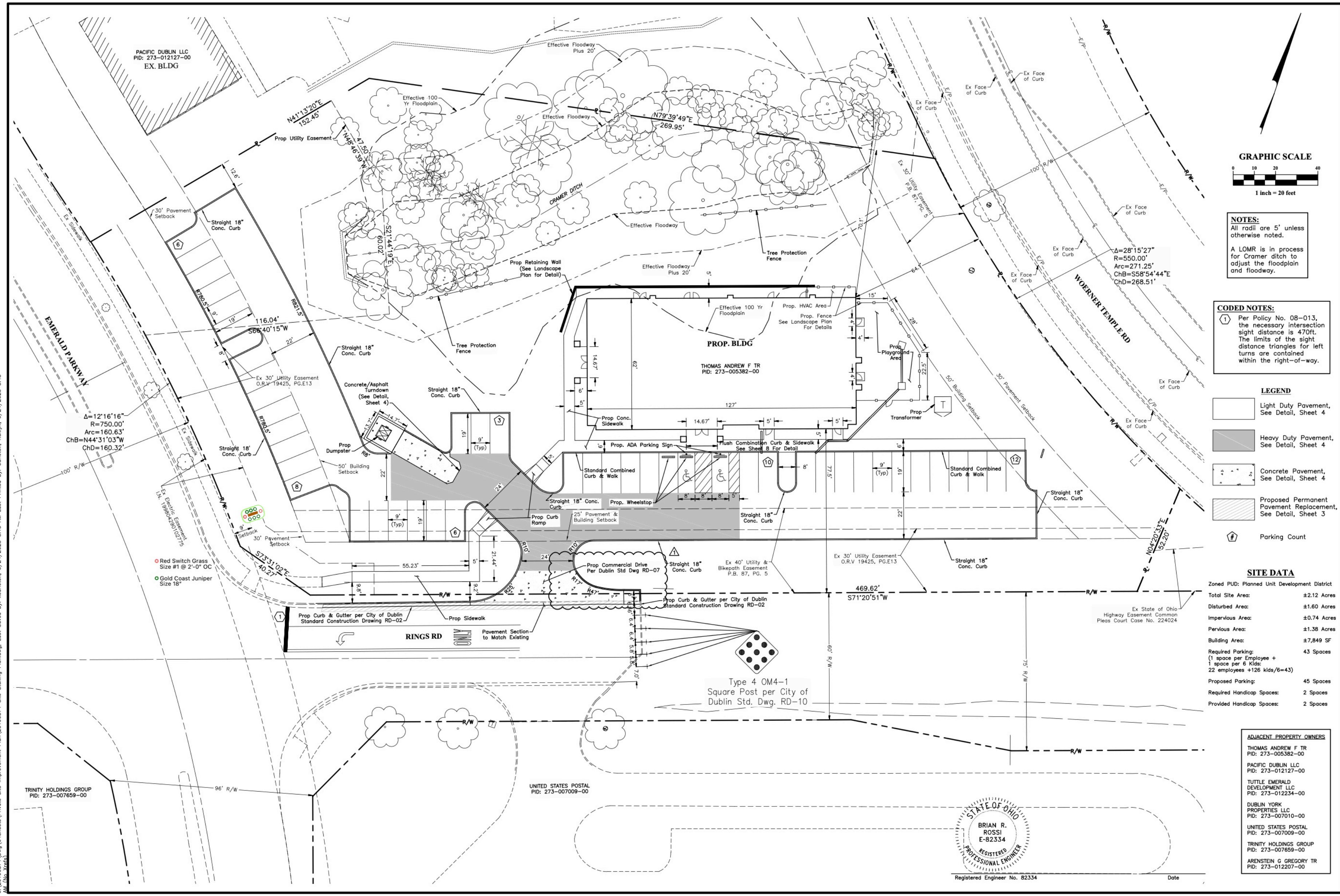


#S1-1323.24 R3: D/F NON-ILLUMINATED MONUMENT SIGN 1" = 1'-0"

- CABINET: FABRICATED ALUMINUM PAINTED WHITE.
- GRAPHICS: DIGITALLY PRINTED VINYL.
- CAP: FABRICATED ALUM. PAINTED BLACK.
- POLE COVER: FABRICATED ALUMINUM PAINTED WHITE.
- ADDRESS NUMBERS: 1/2" THICK BLACK PVC.
- POLE: 2.874" OD X 0.203" WALL STEEL PIPE.
- FOUNDATION: 12" DIAM X 4'-6" DEEP CAISSON FOUNDATION.



\\20190874\Drawings\45Sheets\Private Site Improvement Plan\20190874_Site Staking Plan.dwg, Last Saved By: kcarleton, 5/24/2023 8:15 AM, Last Printed By: Carleton, Kallyn, 5/24/2023 8:48 AM (No Xrefs)



NOTES:
All radii are 5' unless otherwise noted.
A LOMR is in process for Cramer ditch to adjust the floodplain and floodway.

CODED NOTES:
① Per Policy No. 08-013, the necessary intersection sight distance is 470ft. The limits of the sight distance triangles for left turns are contained within the right-of-way.

- LEGEND**
- Light Duty Pavement, See Detail, Sheet 4
 - Heavy Duty Pavement, See Detail, Sheet 4
 - Concrete Pavement, See Detail, Sheet 4
 - Proposed Permanent Pavement Replacement, See Detail, Sheet 3
 - Parking Count

SITE DATA

Zoned PUD: Planned Unit Development District

Total Site Area:	±2.12 Acres
Disturbed Area:	±1.60 Acres
Impervious Area:	±0.74 Acres
Pervious Area:	±1.38 Acres
Building Area:	±7,849 SF
Required Parking: (1 space per Employee + 1 space per 6 Kids: 22 employees +126 kids/6=43)	43 Spaces
Proposed Parking:	45 Spaces
Required Handicap Spaces:	2 Spaces
Provided Handicap Spaces:	2 Spaces

ADJACENT PROPERTY OWNERS

THOMAS ANDREW F TR PID: 273-005382-00
PACIFIC DUBLIN LLC PID: 273-012127-00
TUTTLE EMERALD DEVELOPMENT LLC PID: 273-012234-00
DUBLIN YORK PROPERTIES LLC PID: 273-007010-00
UNITED STATES POSTAL PID: 273-007009-00
TRINITY HOLDINGS GROUP PID: 273-007659-00
ARENSTEIN G GREGORY TR PID: 273-012207-00



REVISIONS

MARK	DATE	DESCRIPTION
A	06/24/23	DRIVE ENTRANCE CURB INLET MODIFICATION

CITY OF DUBLIN, FRANKLIN COUNTY, OHIO
PRIVATE SITE IMPROVEMENT PLAN
FOR
MANGO'S PLACE
5600 RINGS RD
SITE STAKING PLAN

DATE
August 29, 2022

SCALE
1" = 20'

JOB NO.
2019-0874

SHEET
6/15

SYMBOL	COMMON NAME	BOTANICAL NAME	QTY	SIZE	REMARKS
SIL	SILVER LINDEN	TILIA TOMENTOSA	15	2.0" CAL	B & B
AMU	AMUR MAPLE	ACER GINNALA	5	2.0" CAL	B & B
HEG	HEDGE MAPLE	ACER CAMPESTRE	19	2.0" CAL	B & B
WHI	WHITE SPRUCE	PICEA GLAUCA	13	6'-0"H MIN	B & B
QCK	QUICKFIRE HYDRANGEA	HYDRANGEA PANICULATA	19	1 GAL	PLANT @ 3'-6" OC
RED	RED SWITCH GRASS	PANICUM VIRGATUM	6	#1	PLANT @ 2'-0" OC
GLD	GOLD COAST JUNIPER	JUNIPERUS CHIENSIS GOLD COAST	11	18"	PLANT @ 3'-0" OC
COM	COMPACT BURNING BUSH	EUONYMUS ALATUS	7	#1	PLANT @ 2'-0" OC
MAI	MAIDEN GRASS	MISCANTHUS SINENSIS GRACILLIMUS	8	#1	PLANT @ 2'-0" OC
DEN	DENSE YEW	TAXUS X MEDIA DENSIFORMIS	49	24"H MIN	PLANT @ 2'-6" OC
TEC	TECHNY ABORVITAE	THUJA OCCIDENTALIS TECHNY	11	4'-0"H MIN	
BOX	GREEN VELVET BOXWOOD	BOXUS X GREEN VELVET	6	1'-6"H MIN	PLANT @ 3'-0" OC
SHR	SHAMROCK INKBERRY	ILEX GLABRA SHAMROCK	3	1'-6"H MIN	PLANT @ 3'-0" OC
SJW	ST. JOHN'S WORT	HYPERICUM CALYGINUM	6	#3	
ASA	FALSE SPIRAEA	ASTILBE AMETHYST	1	STARTER	
ASG	FALSE SPIRAEA	ASTILBE GLUT	1	STARTER	
DAY	DAYLILLIES	HEMEROCALLIS	8	STARTER	
DOG	WHITE DOGWOOD	CORNUS FLORIDA	6	6'-0"H MIN	B & B