
Communicating Your Brand



CLIENT:



PROJECT NAME:

Dean Insurance Group
Bracket Sign

PROJECT LOCATION:

37 W Bridge St.,
Dublin, OH 43017, USA

SALES CONTACT:

Margie Hegg • 614.410.5354
margie@americansignstudio.com

9" w x 14" t 0.25" d Aluminum Composite Panel with 1/4" Acrylic Dimensional Logo and Text.

Aluminum Composite Panel Painted to Match Sherwin-Williams SW6258 Tricorn Black.

Mounted to East Stone Wall with Heavy Duty TapCon Screws in Mortar.

Sign Placement Height May Vary Slightly to Make Sure Screws Go Into Mortar.

PLEASE CHECK YOUR PROOF CAREFULLY

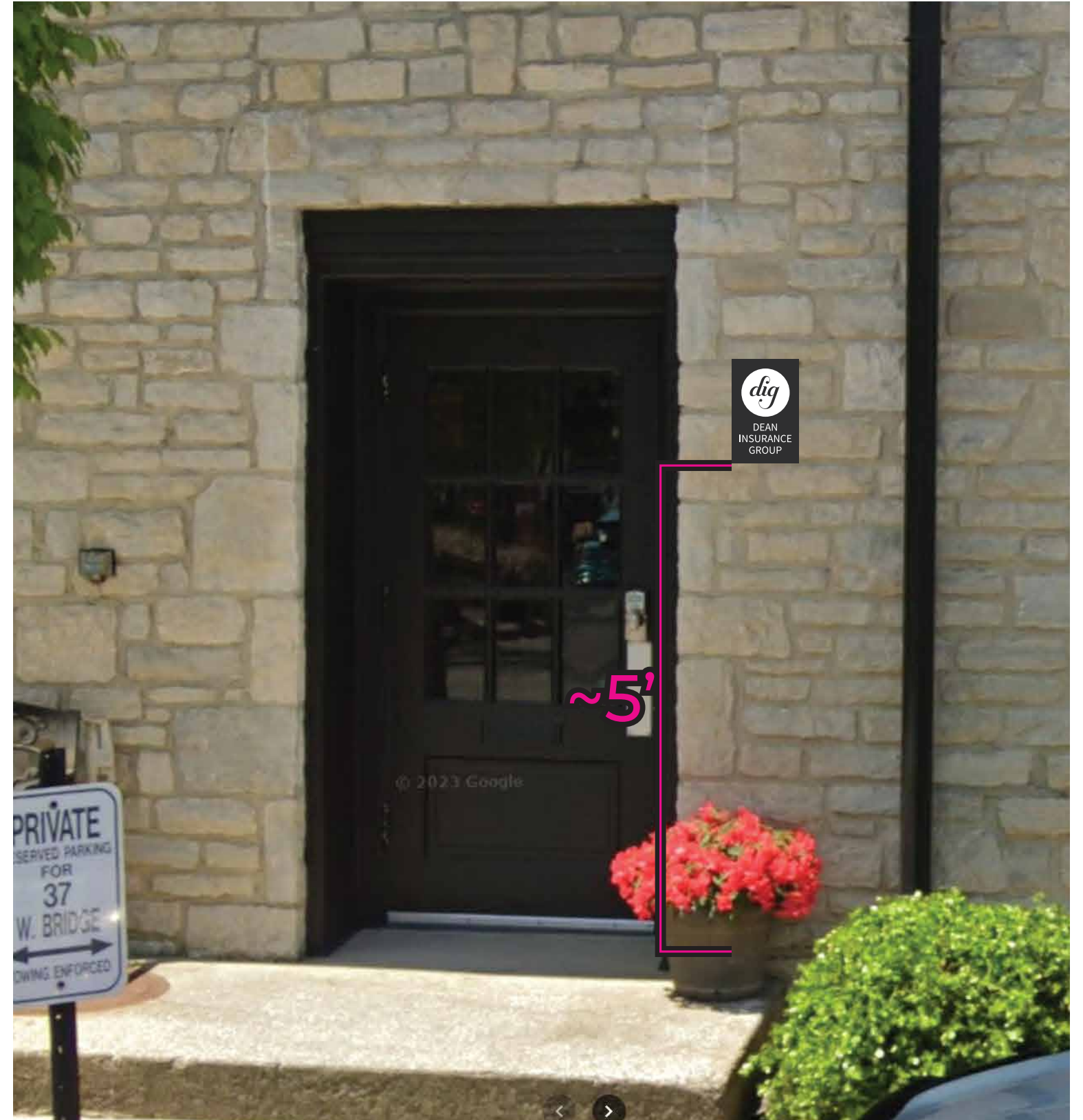
Before giving approval, please check your proof carefully, verifying all information such as spelling, measurements, punctuation, numbers, and graphics. The final verification for accuracy of all information is your responsibility.

Please be aware that a monitor displays RGB color, while print uses CMYK. Colors will vary slightly due to media, screen calibration, lighting and other atmospheric conditions.

EXISTING



PROPOSED



CLIENT:  DEAN INSURANCE GROUP

PROJECT NAME:
Dean Insurance Group
Bracket Sign

PROJECT LOCATION:
37 W Bridge St.,
Dublin, OH 43017, USA

SALES CONTACT:
Margie Hegg • 614.410.5354
margie@americansignstudio.com

9"w x 14"h x 0.25"d Aluminum Composite
Panel with 1/4" Acrylic Dimensional Logo
and Text.

Aluminum Composite Panel Painted to
Match Sherwin-Williams SW6258 Tricorn
Black.

Mounted to East Stone Wall with Heavy
Duty TapCon Screws in Mortar.

Sign Placement Height May Vary Slightly
to Make Sure Screws Go Into Mortar.

**PLEASE CHECK YOUR
PROOF CAREFULLY**

Before giving approval, please check your
proof carefully, verifying all information
such as spelling, measurements,
punctuation, numbers, and graphics. The
final verification for accuracy of all
information is your responsibility.

Please be aware that a monitor displays
RGB color, while print uses CMYK. Colors
will vary slightly due to media, screen
calibration, lighting and other
atmospheric conditions.



CLIENT:



PROJECT NAME:

Dean Insurance Group
Bracket Sign

PROJECT LOCATION:

37 W Bridge St.,
Dublin, OH 43017, USA

SALES CONTACT:

Margie Hegg · 614.410.5354
margie@americansignstudio.com

9"w x 14"t 0.25"d Aluminum Composite
Panel with 1/4" Acrylic Dimensional Logo
and Text.

Aluminum Composite Panel Painted to
Match Sherwin-Williams SW6258 Tricorn
Black.

Mounted to East Stone Wall with Heavy
Duty TapCon Screws in Mortar.

Sign Placement Height May Vary Slightly
to Make Sure Screws Go Into Mortar.

**PLEASE CHECK YOUR
PROOF CAREFULLY**

Before giving approval, please check your
proof carefully, verifying all information
such as spelling, measurements,
punctuation, numbers, and graphics. The
final verification for accuracy of all
information is your responsibility.

Please be aware that a monitor displays
RGB color, while print uses CMYK. Colors
will vary slightly due to media, screen
calibration, lighting and other
atmospheric conditions.

Sign Panel

TapCon
Screws

Stone Wall



CLIENT:  DEAN INSURANCE GROUP

PROJECT NAME:
Dean Insurance Group
Bracket Sign

PROJECT LOCATION:
37 W Bridge St.,
Dublin, OH 43017, USA

SALES CONTACT:
Margie Hegg • 614.410.5354
margie@americansignstudio.com

9"w x 14"t 0.25"d Aluminum Composite Panel with 1/4" Acrylic Dimensional Logo and Text.

Aluminum Composite Panel Painted to Match Sherwin-Williams SW6258 Tricorn Black.

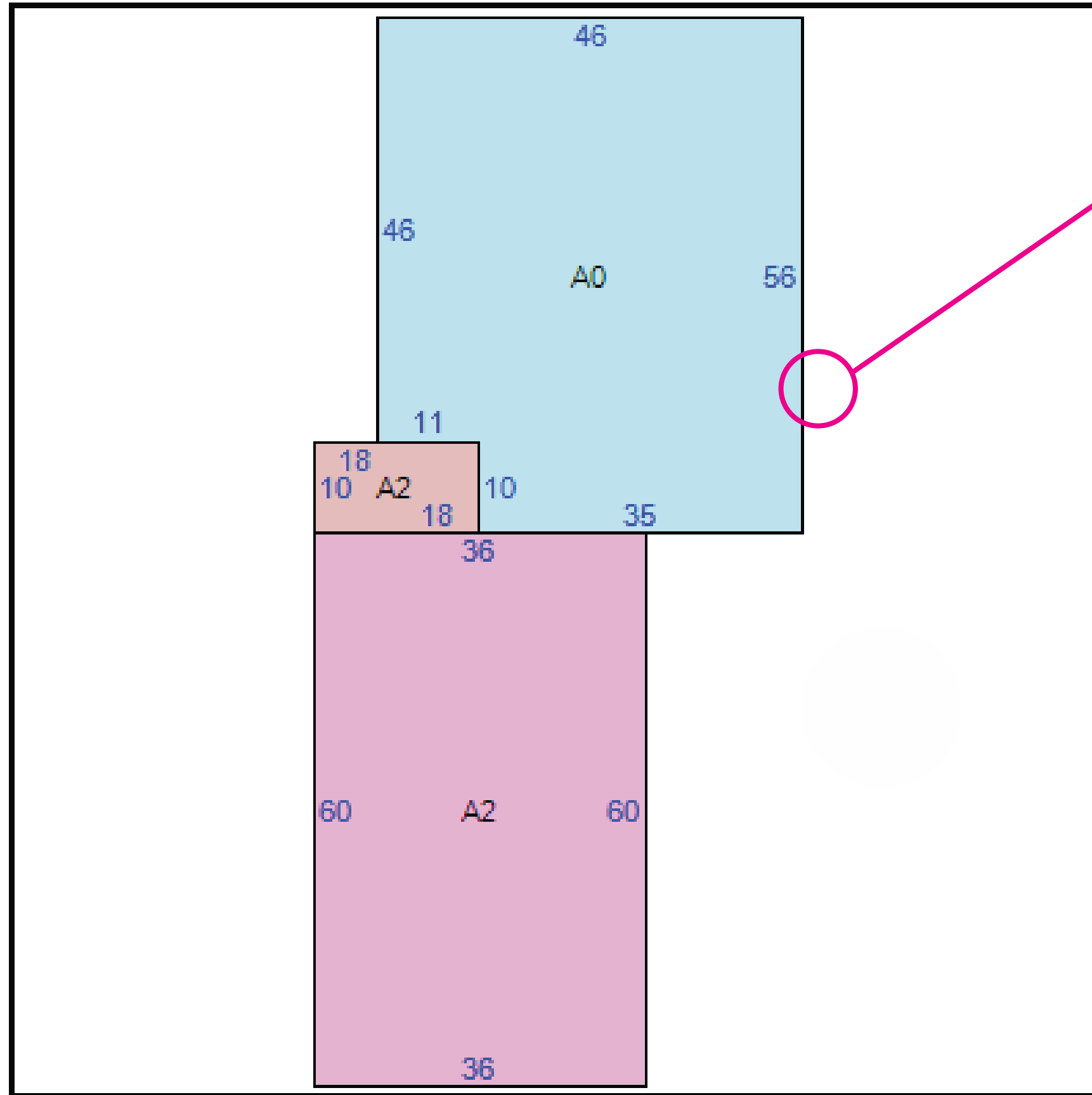
Mounted to East Stone Wall with Heavy Duty TapCon Screws in Mortar.

Sign Placement Height May Vary Slightly to Make Sure Screws Go Into Mortar.

PLEASE CHECK YOUR PROOF CAREFULLY

Before giving approval, please check your proof carefully, verifying all information such as spelling, measurements, punctuation, numbers, and graphics. The final verification for accuracy of all information is your responsibility.

Please be aware that a monitor displays RGB color, while print uses CMYK. Colors will vary slightly due to media, screen calibration, lighting and other atmospheric conditions.



SIGN LOCATION



CLIENT:  DEAN INSURANCE GROUP

PROJECT NAME:
Dean Insurance Group
Bracket Sign

PROJECT LOCATION:
37 W Bridge St.,
Dublin, OH 43017, USA

SALES CONTACT:
Margie Hegg • 614.410.5354
margie@americansignstudio.com

9" w x 14" t 0.25" d Aluminum Composite Panel with 1/4" Acrylic Dimensional Logo and Text.

Aluminum Composite Panel Painted to Match Sherwin-Williams SW6258 Tricorn Black.

Mounted to East Stone Wall with Heavy Duty TapCon Screws in Mortar.

Sign Placement Height May Vary Slightly to Make Sure Screws Go Into Mortar.

PLEASE CHECK YOUR PROOF CAREFULLY

Before giving approval, please check your proof carefully, verifying all information such as spelling, measurements, punctuation, numbers, and graphics. The final verification for accuracy of all information is your responsibility.

Please be aware that a monitor displays RGB color, while print uses CMYK. Colors will vary slightly due to media, screen calibration, lighting and other atmospheric conditions.

