

CITY OF DUBLIN  
1,530 AC.  
O.R. 93, PAGE 165

GORDEN FARMS  
CASTO POST, LTD  
2,627 AC.  
O.R. 93, PAGE 176

CITY OF DUBLIN  
0.325 AC.  
O.R. 93, PAGE 168

S03°51'24"E  
1044.09

# FUTURE CONSTRUCTION

NORTHWEST ASSEMBLY OF GOD, INC  
20,766 AC.  
O.R. 256, PAGE 561

NORTHWEST ASSEMBLY OF GOD, INC  
3,957 AC.  
O.R. 256, PAGE 561

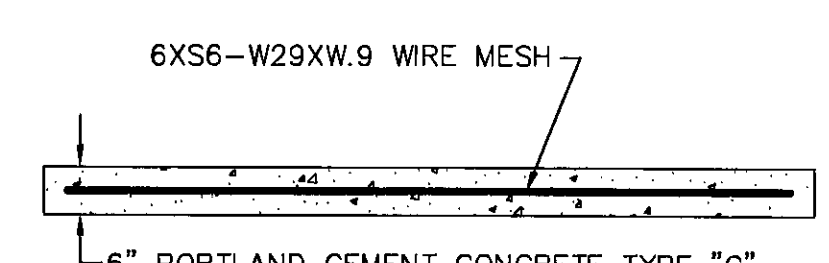
N04°16'31"W  
90.00

S87°09'00"E  
161.24

N85°43'29"E  
354.41

N12°39'03"E  
574.90

N06°03'45"W  
728.36



**REINFORCED CONCRETE DETAIL**  
NOT TO SCALE

### STANDARD DUTY PAVEMENT MATERIALS

- ① 1.5" ODOT 448 ASPHALT CONCRETE, SURFACE COURSE, TYPE I (PARKING STALLS)
- ② 2.0" ODOT 448 ASPHALT CONCRETE, SURFACE COURSE, TYPE I (DRIVE AISLES)
- ③ 1.5" ODOT 448 ASPHALT CONCRETE, INTERMEDIATE COURSE, TYPE II (PARKING STALLS)
- ④ 2.0" ODOT 448 ASPHALT CONCRETE, INTERMEDIATE COURSE, TYPE II (DRIVE AISLES)
- ⑤ ODOT 408 BITUMINOUS PRIME COAT (RC-70, RC-250, MC-30, MC-70, MC-250, OR PRIMER 20) @ 0.35 GAL./S.Y.
- ⑥ 6" ODOT 304 AGGREGATE BASE (PARKING STALLS)
- ⑦ 8" ODOT 304 AGGREGATE BASE (DRIVE AISLES)
- ⑧ ODOT 204 SUBGRADE PREPARATION
- ⑨ ODOT 609 18" STRAIGHT CONCRETE CURB, TYPE 6 (WEST ENTRANCE DRIVE AND AREAS AS SHOWN ON PLAN)

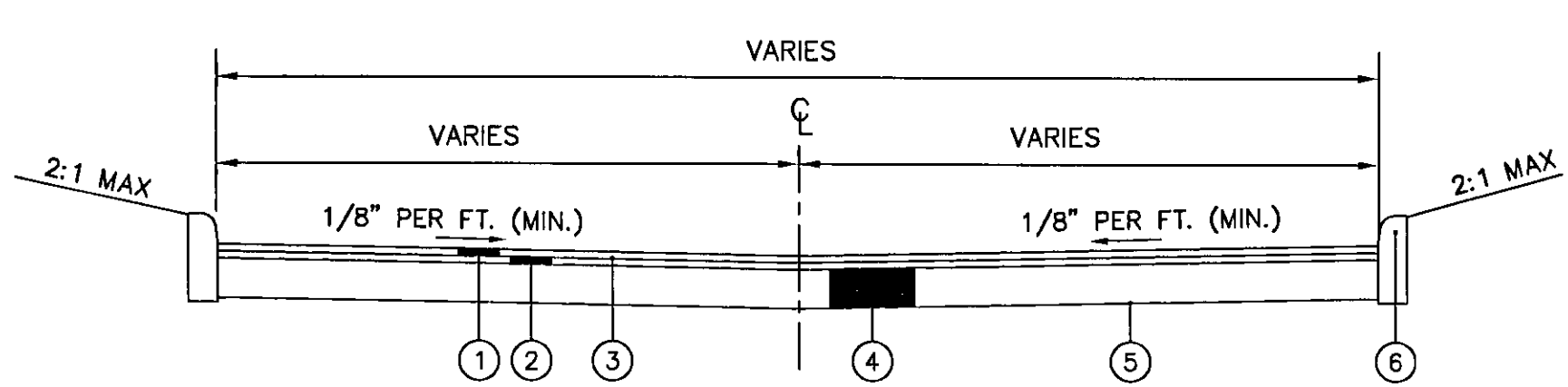
### HEAVY DUTY PAVEMENT MATERIALS

- ① 1.5" ODOT 448 ASPHALT CONCRETE, SURFACE COURSE, TYPE I
- ② 1.5" ODOT 448 ASPHALT CONCRETE, INTERMEDIATE COURSE, TYPE II
- ③ ODOT 408 BITUMINOUS PRIME COAT (RC-70, RC-250, MC-30, MC-70, MC-250, OR PRIMER 20) @ 0.35 GAL./S.Y.
- ④ 12" ODOT 304 AGGREGATE BASE
- ⑤ ODOT 204 SUBGRADE PREPARATION
- ⑥ ODOT 609 18" STRAIGHT CONCRETE CURB, TYPE 6

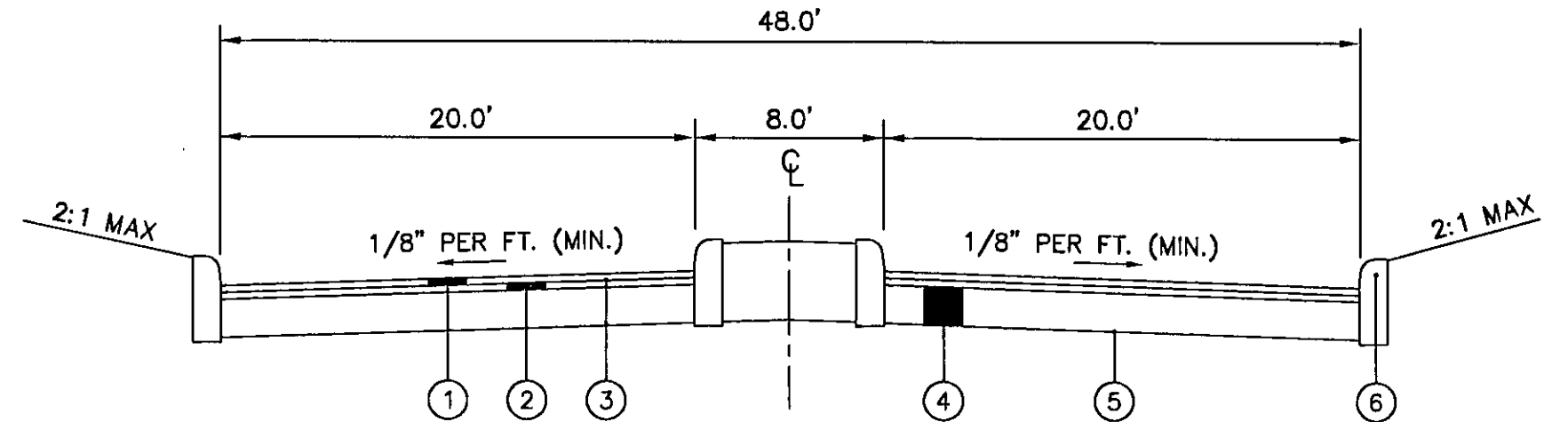
### LEGEND

- PROPERTY LINE
- EXISTING CURB
- PROPOSED CURB
- PROPOSED EDGE OF PAVEMENT (NO CURB)

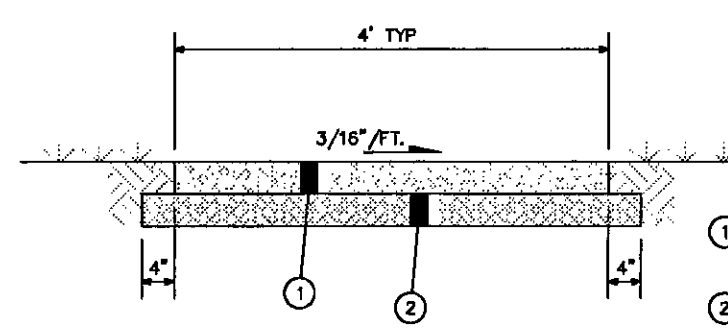
**City of Dublin Contacts**  
INSPECTION LINE 410-4680  
BUILDING DIVISION 410-4670  
ENGINEERING DIVISION 410-4600  
PLANNING DIVISION 410-4600  
CITY FORESTER 410-4701



**PAVEMENT DETAIL (TYPICAL)**  
NOT TO SCALE



**MAIN ENTRANCE DRIVE PAVEMENT DETAIL (TYPICAL)**  
NOT TO SCALE



**SIDEWALK SECTION**  
NOT TO SCALE

- ① ITEM 608 4" CONCRETE WALK (CLASS 'C' CONCRETE)
- ② ITEM 304 4" AGGREGATE BASE

**Tree Protection Fencing**  
MUST BE INSTALLED AND INSPECTED PRIOR TO START OF ANY CONSTRUCTION. CALL PLANNING DIVISION FOR INSPECTION.

**Sign Permit Required**  
CALL PLANNING DIVISION

**Prior To Construction**  
READ ALL PERMIT CONDITIONS AND/OR NOTES ON APPROVED PLANS

**CITY OF DUBLIN, OHIO**  
ZONING PLAN REVIEW  
APPROVED AS NOTED

### NOTE

EXISTING ROAD CENTERLINE INFORMATION IS BASED ON CITY OF DUBLIN GIS DATA.

EXISTING POST PRESERVE BLVD RIGHT-OF-WAY INFORMATION IS BASED ON CITY OF DUBLIN GIS DATA.

### PROJECT DATA

SITE ADDRESS: 7100 POST ROAD  
DUBLIN, OHIO 43017  
SITE AREA: 7.81 AC.  
ZONING: "R" RURAL

**FLOOD DATA**  
SEE FLOOD INSURANCE RATE MAP  
PANEL 106 OF 387, FRANKLIN COUNTY, OHIO.

**SETBACKS**  
FRONT YARD HALF THE WIDTH OF RIGHT OF WAY  
SIDE YARD 8 FEET (MIN), 25 FEET COMBINED  
REAR YARD 50 FEET (MAX)  
MAXIMUM BUILDING HEIGHT 35 FEET (EXCEPT AS ALLOWED BY THE FIRE CHIEF AND AS APPROVED BY THE PLANNING COMMISSION)

**PARKING CALCULATIONS**  
CHURCH-SANCTUARY AREA: 8,635 SF  
PARKING SPACES REQUIRED: 288 SPACES  
(SANCTUARY @ 1 SPACE/30 SF)

**PARKING PROVIDED**  
PARKING SPACES: 279 SPACES  
HANDICAP PARKING SPACES: 9 SPACES (7 REQUIRED)  
TOTAL PARKING PROVIDED: 288 SPACES

LOT COVERAGE: 159,520 SF  
SITE AREA: TOTAL 443,383 SF  
% LOT COVERAGE: 36.0%

**Screen All Service Structures & Mechanical Units**  
PER CITY CODE  
CALL PLANNING DIVISION

PLAN PREPARED BY:  
**Civil & Environmental Consultants, Inc.**  
8740 Orion Place, Suite 100  
Columbus, OH 43240  
(614) 540-8033 (800) 348-8908  
333 Boldwin Rd.  
Middletown, OH 45042  
(412) 429-2324 (800) 355-2324

### AUTHORIZED USE:

- Phase
- Mission
  - Campaign
  - Schematic
  - Design Development
  - Constr. Docs.

### Purpose

- Progress
- Bidding
- Building Permit
- Construction

### REVISIONS


**Radiant Life Church**  
7100 Post Road,  
Dublin, OH 43017

**MIDWEST CHURCH CONSTRUCTION**  
634 Eckel Road  
Perry Township, OH 45351

**SITE PLAN**

**MIDWEST DESIGN, LTD.**  
MIDWEST CHURCH CONSTRUCTION, INC.  
634 ECKEL ROAD, PERRY TOWNSHIP, OH 45351  
TEL: (513) 833-8888 FAX: (513) 833-8888  
WWW.MIDWESTDESIGN.COM

DRAWN: wfp CHECKED: DBB  
DATE: 11-09-05 SCALE: 1"=80'  
JOB NUMBER: 04-022  
SHEET NO.

**C3.00**

COPYRIGHT © 2004 BY MIDWEST CHURCH DESIGN, LTD.