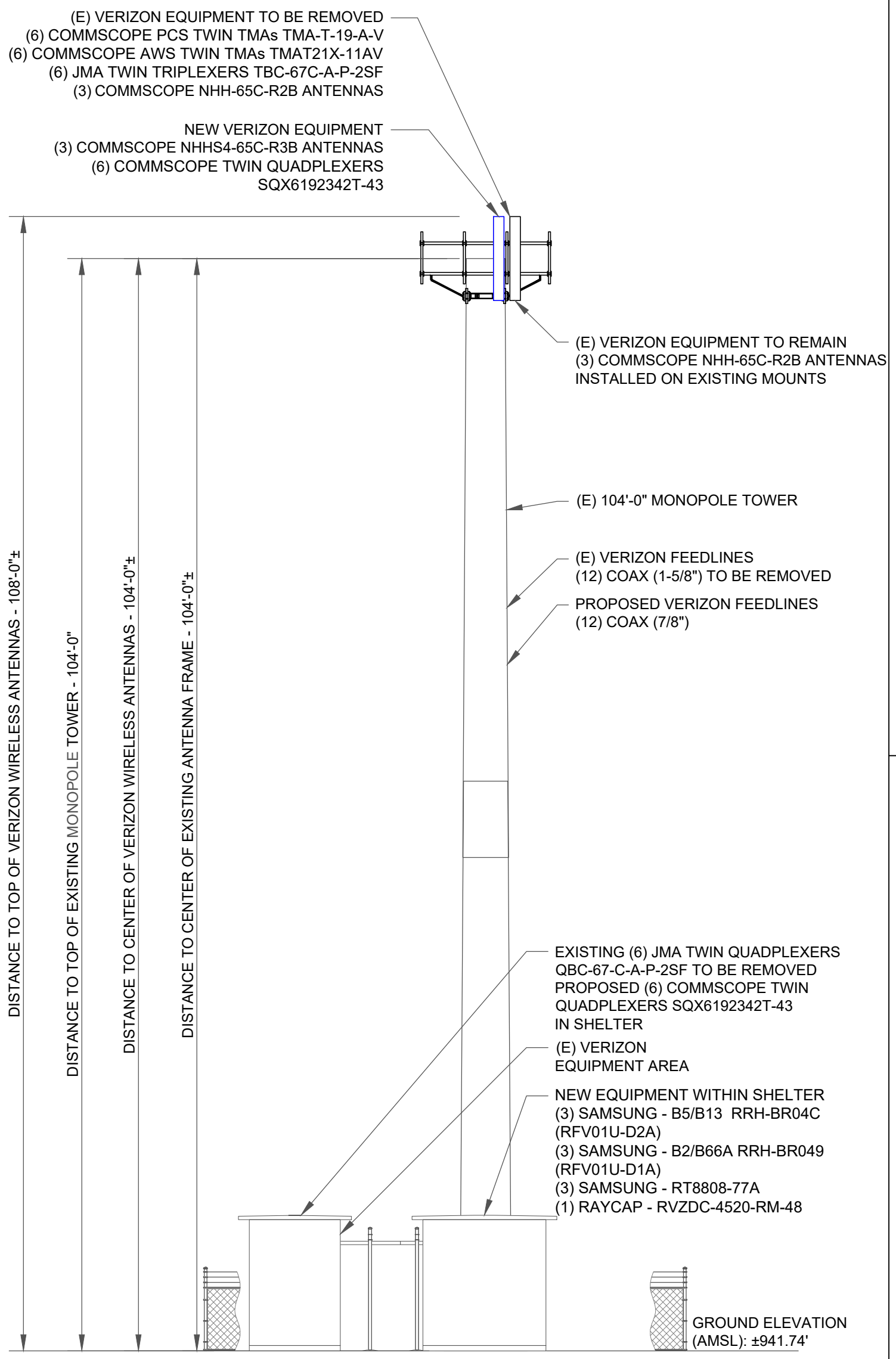


NOTE: THIS DRAWING IS FOR EXHIBIT AND LAYOUT PURPOSES ONLY. PLEASE REFER TO TOWER STRUCTURAL ANALYSIS AND MOUNT ANALYSIS FOR CONFIRMATION OF ADEQUATE STRUCTURE CAPACITY.

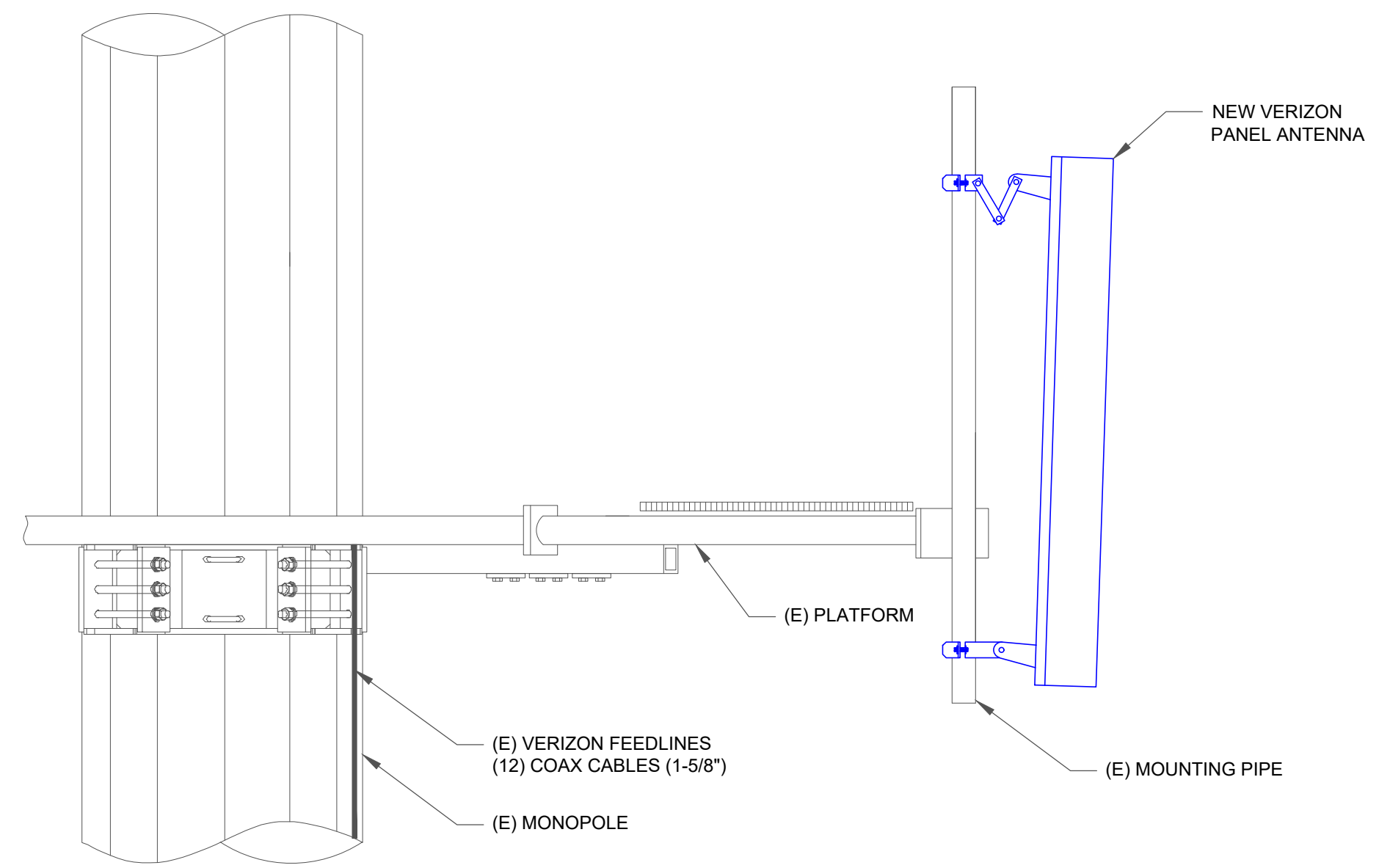
MOUNT ANALYSIS STATUS: COMPLETE  
 MOUNT ANALYSIS RESULTS: PASS  
 MOUNT ANALYSIS DATE: 03/04/2022  
 (BY PAUL J. FORD & COMPANY)

STRUCTURAL ANALYSIS STATUS: PENDING  
 STRUCTURAL ANALYSIS RESULTS: PENDING  
 STRUCTURAL ANALYSIS DATE: PENDING  
 (BY TBD)

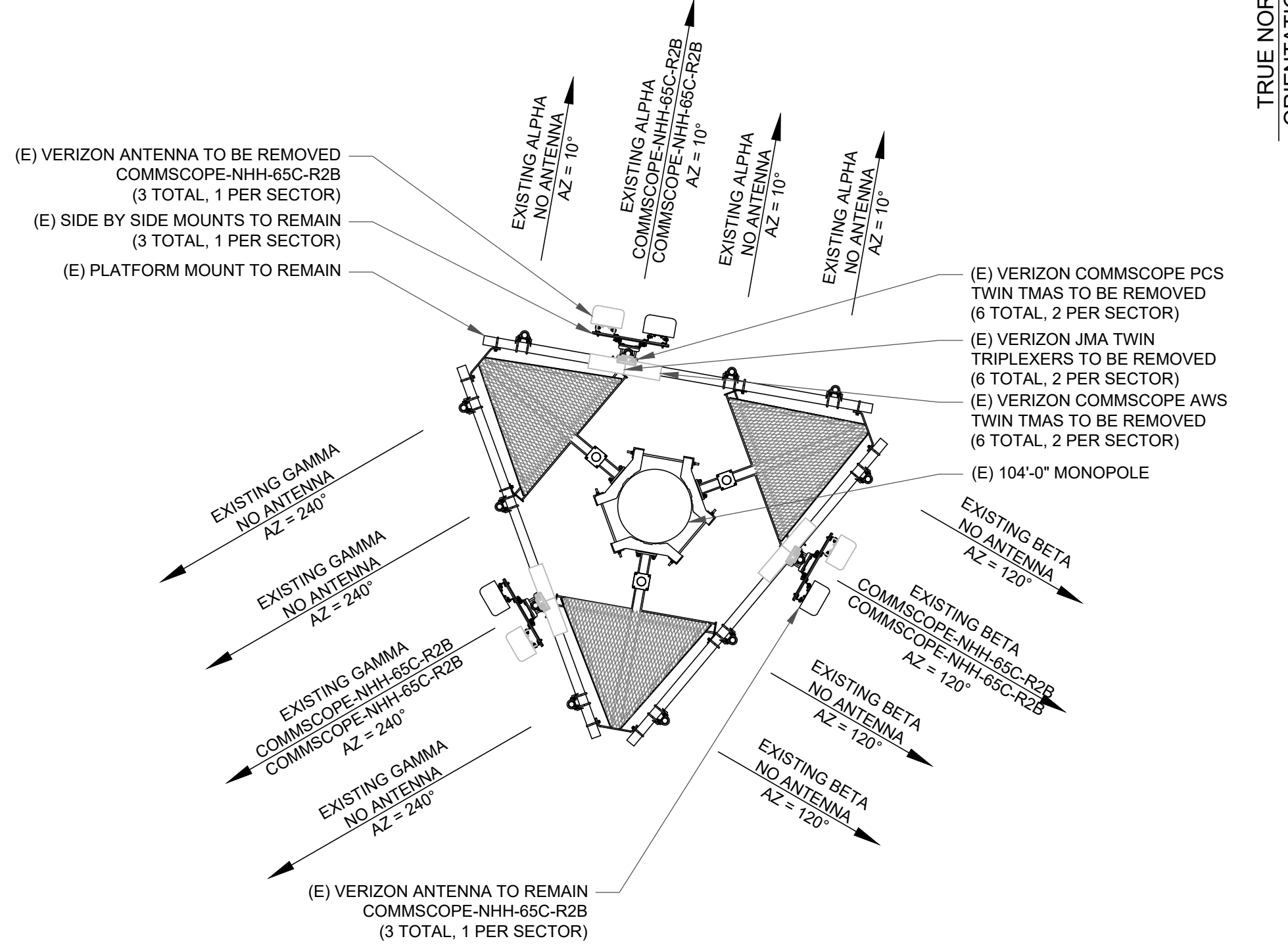
FINAL COAX/HYBRID CABLE COUNT  
 (12) 7/8" COAX CABLES



1 PROPOSED TOWER ELEVATION (LOOKING SOUTHEAST)  
 SCALE: NOT TO SCALE



2 PROPOSED OVP/RRH/ANTENNA DETAIL  
 SCALE: NOT TO SCALE



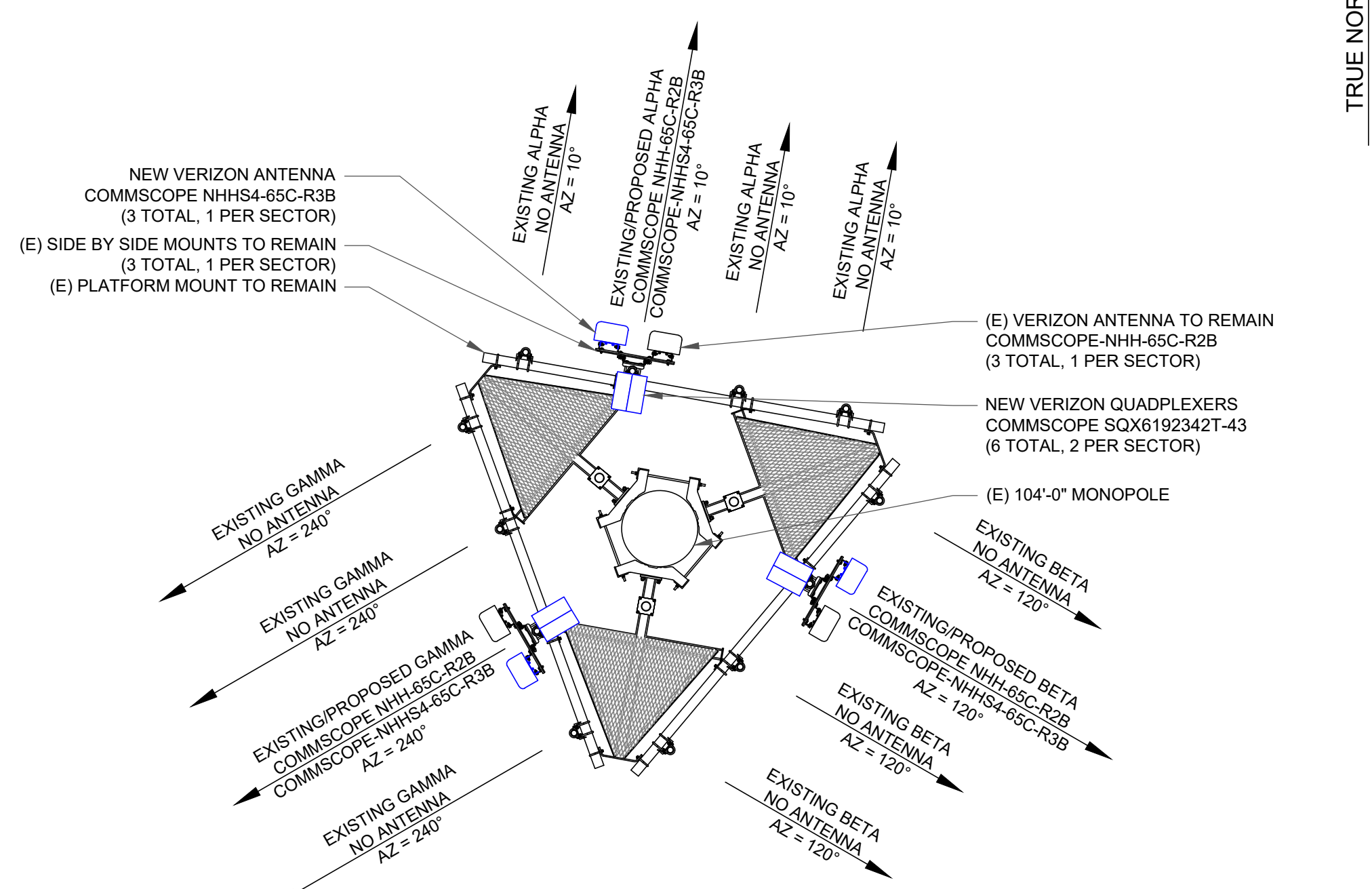
3 EXISTING ANTENNA LAYOUT  
 SCALE: NOT TO SCALE

- SEQUENCE OF OPERATION:
- REMOVE (3) NOKIA UHBA, (3) NOKIA UHFA AND (3) NOKIA UHIE RRRHS FROM SHELTER.
  - REMOVE (3) COMMSCOPE NHH-65C-R2B ANTENNAS FROM POSITION 2L (1 PER SECTOR).
  - REMOVE (12) 1-5/8" COAX AND REPLACE WITH (12) NEW 7/8" COAX.
  - REMOVE (6) JMA TWIN QUADPLEXERS IN SHELTER.
  - REMOVE (6) JMA TWIN TRIPLEXERS.
  - REMOVE (6) COMMSCOPE AWS TWIN TMAs.
  - REMOVE (6) COMMSCOPE PCS TWIN TMAs.
  - INSTALL (3) COMMSCOPE NHH-65C-R3B ANTENNAS IN POSITION 2L SIDE BY SIDE ANTENNA MOUNT VERTICALLY CENTERED ON THE PLATFORM.
  - INSTALL (6) COMMSCOPE TWIN QUADPLEXERS ON TOWER TOP AND (6) COMMSCOPE TWIN QUADPLEXERS WITHIN SHELTER.
  - INSTALL (3) SAMSUNG - B5/B13 RRH-BR04C (RFV01U-D2A), (3) SAMSUNG - B2/B66A RRH-BR049 (RFV01U-D1A), (3) SAMSUNG - RT8808-77A RRUS AND (1) RAYCAP - RVZDC-4520-RM-48 OVP WITHIN SHELTER.
  - RETURN ALL REMOVED EQUIPMENT TO VERIZON WIRELESS.

- NOTES:
- THIS DRAWING IS FOR EXHIBIT PURPOSES ONLY
  - PLEASE REFER TO STRUCTURAL REPORT PROVIDED BY OTHERS FOR CONFIRMATION OF ADEQUATE STRUCTURE CAPACITY.
  - NO LINE OR ANTENNA WORK TO BEGIN PRIOR TO CONFIRMATION OF ADEQUATE TOWER AND MOUNT CAPACITY USING THE FINAL CONFIGURATION.
  - ALL EXISTING & PROPOSED INFORMATION PROVIDED BY LL AND VERIZON WIRELESS.
  - NO NEW AC POWER CIRCUITS REQUIRED FOR THE SCOPE OF THIS PROJECT. POWER SCOPE OF WORK IS LIMITED TO -48VDC ONLY.
  - ALL NEW OVPS MUST BE INSTALLED ON A MOUNT, NOT DIRECTLY ON THE TOWER LEG.
  - ALL ANTENNA MOUNTING PIPES NEED TO BE 2-7/8" x96" O.D. HEAVY DUTY GALVANIZED.



- ANTENNA REPLACEMENT NOTES:
- CONTRACTOR TO INSPECT THE CONDITION OF EXISTING MOUNTING PIPES. CONFIRM THE FOLLOWING:
    - CORROSION; IF MOUNTS ARE FOUND TO BE CORRODED CONTACT VERIZON REP. FOR DIRECTION.
    - CHECK CONDITION OF ATTACHMENT BOLTS. IF FOUND LOOSE, TIGHTEN TO ORIGINAL SPECIFICATIONS (ALSO, TURN OF THE NUT METHOD).
    - IF BOLTS ARE MISSING, REPLACE TO SUITE.
    - CONFIRM MOUNTING PIPE IS ADEQUATELY SIZED TO ACCOMMODATE PROPOSED ANTENNA INSTALL.
  - ALL WORK DEPICTED ON THIS DRAWING DESIGNED IN ACCORDANCE WITH 2017 OBC AND AMENDMENTS.



4 PROPOSED ANTENNA LAYOUT  
 SCALE: NOT TO SCALE

**verizon**  
 1515 E. WOODFIELD ROAD  
 SCHAUMBURG, IL 60173

LATITUDE: 40° 8' 13.4592" N / 40.137072  
 LONGITUDE: 83° 5' 42.2088" W / -83.095058

**GPD GROUP**  
 Glaus, Pyle, Schomer, Burns & DeHaven, Inc.  
 520 South Main Street, Suite 2531  
 Akron, OH 44311  
 330.572.2100 Fax 330.572.2101  
 Copyright: Glaus, Pyle, Schomer, Burns & DeHaven, Inc. 2022

NO	BY	ROL	CJW	CJW	CJW
A	0	0	0	0	0
	DATE	04/22/2022	06/02/2022	07/12/2022	08/15/2022
	DESCRIPTION	ISSUED FOR PERMIT	UPDATED PER CLIENT COMMENTS	ISSUED FOR CONSTRUCTION	ISSUED FOR CONSTRUCTION

STATE OF OHIO  
 REGISTERED PROFESSIONAL ENGINEER  
 CHRISTOPHER J. SCHEKS  
 E-78306  
 08/15/2022

PSLC #: 149818  
**SUMMITVIEW RELO**  
 8358 GLENCREE PLACE  
 DUBLIN, OHIO 43017

DRAWN BY: ROL  
 CHECKED BY: TD  
 DATE: 08/15/2022  
 PROJECT #: 2022737.01.149818.02

SHEET TITLE  
**TOWER ELEVATION & ANTENNA LAYOUTS**

SHEET NUMBER  
**C-1**