

**MOUNT CARMEL HEALTH SYSTEM (MCHS)
DUBLIN CAMPUS FINAL DEVELOPMENT PLAN
AMENDMENT
NOVEMBER 22, 2024**

Amendment Narrative

Narrative..... page 1-2

Package One – Signage Package Revisions

Original FDP Site Sign Quantities & Types..... page 3
Amended FDP Site Sign Quantities & Types page 4
Original FDP Building Sign Quantities & Types..... page 5
Amended FDP Building Sign Quantities & Types..... page 6
Original FDP BE-02 Emergency Canopy Sign..... page 7
Amended FDP BE-02 Emergency Canopy Sign..... page 8
Original FDP BE-02 Ambulance Canopy Sign..... page 9
Amended FDP BE-02 Ambulance Canopy Sign..... page 10
Original FDP WL-02 Secondary Building ID Sign..... page 11
Amended FDP WL-02 Secondary Building ID Sign page 12
Original FDP WL-03 Secondary Building ID Sign..... page 13
Amended FDP WL-03 Secondary Building ID Sign page 14
Original FDP WL-03 Secondary Building ID Sign Detail..... page 15
Amended FDP WL-03 Secondary Building ID Sign Detail..... page 16
Original FDP Ground Signs page 17
Amended FDP Ground Signs page 18

Package Two – Chapel Cross Uplighting

Site Plan page 19
Lighting Fixture Cutsheet..... page 20-21

Amendment Narrative

Signage Description

Sign SE-01 Primary Site Entrance Sign:

- Updated total signage area from 50 SF to 50.05 SF to provide accurate correlation with approved signage permit drawings.

Sign DR-01 Primary Directional Sign:

- Updated total signage area from 28 SF to 28.16 SF and total quantity from 2 to 3 to provide accurate correlation with approved signage permit drawings and site plan.

Sign DR-02 Secondary Directional Sign:

- Updated total signage area from 16 SF to 16.25 SF to provide accurate correlation with approved signage permit drawings.

Sign DR-03 Secondary Directional Sign:

- Updated total signage area from 4 SF to 3.75 SF and total quantity from 33 to 31 to provide accurate correlation with approved signage permit drawings and site plan.

Sign DR-04 Secondary Directional Sign:

- Updated total signage area from 9 SF to 8.45 SF to provide accurate correlation with approved signage permit drawings.

Sign BE-01-001 Building Entrance Sign: Hospital Canopy

- Updated total signage area from 50 SF to 11.33 SF to provide accurate correlation with approved signage permit drawings.

Sign BE-01-002 Building Entrance Sign: MOB Canopy

- Updated total signage area from 50 SF to 11.08 SF to provide accurate correlation with approved signage permit drawings.

Sign BE-02-001 Building Entrance Sign: ED Canopy

- Updated total signage area from 34 SF to 8.67 SF to provide accurate correlation with fabrication drawings.
- Updated elevation to depict accurate dimensions, total signage area, and canopy height.

Sign BE-02-002 Building Entrance Sign: Ambulance Canopy

- Updated total signage area from 34 SF to 8.50 SF to provide accurate correlation with fabrication drawings.
- Updated elevation to depict accurate dimensions, total signage area, and canopy height.

Sign WL-02 Secondary Building ID Sign on South Elevation:

The amended FDP proposes the reduction in size of the “burst” logo to accommodate the addition of “Mount Carmel” lettering to be consistent with institutional brand standards. The total area of the proposed sign is 198.10 SF (21’-5” x 9’-3”), within the allowable 350 SF size limitation, and proportional to the building elevation.

- Allowable total signage area according to approved PUD text: 350 SF
- Total signage area graphically depicted in approved FDP: 124SF (15’-10” x 7’-10”) with “burst” logo only
- Total signage area listed in approved FDP: 96 SF

Sign WL-03 Secondary Building ID Sign at West Elevation:

The amended FDP proposes a total signage area of 97.25 SF (15’-5-1/4” x 6’- 3-5/8”) based upon refinement of fabrication drawings to be consistent with institutional brand standards.

- Allowable total signage area according to approved PUD text: 350 SF
- Total signage area graphically depicted in approved FDP: 97.11SF (15’-4” x 6’-4”) with “burst” logo and “Mount Carmel” lettering
- Total signage area listed in approved FDP: 46 SF

Lighting Description

An important feature of the Mount Carmel Dublin Health Campus is the chapel, centrally located between the main hospital and medical office building. Mount Carmel desires to include exterior uplighting to the chapel cross, which sits atop the chapel façade. Due to the cross rising above the building façade, a backlit or halo effect is not achievable. As such, a single light fixture located at grade level is being proposed in order to illuminate the cross at night. The fixture is over 500’ from the nearest condo at Inverness, and is shielded from view by the medical office building. The fixture is also over 900’ away from the nearest house along Bright Road, and would be substantially shielded by the landscaping both around the chapel and throughout the site.

MOUNT CARMEL HEALTH SYSTEM
SIGN QUANTITIES



462 S Ludlow St.
 Columbus, Ohio, 43215

t: 614.621.2796
www.mkskstudios.com

Client:



Project:

**Mount Carmel Northwest Health
 Campus
 Wayfinding Signage System**

Project Number: C22524
 Wayfinding Signage System

Exterior Signage Design Updates
 Issued For Coordination & Discussion

06.20.2022

Revisions:

Design Intent

Sign Name
 GENERAL - SIGN QUANTITIES &
 TYPES

SE-01 PRIMARY SITE ENTRY SIGN		
	QUANTITY	LOCATION
	1	Emerald Parkway
SE-02 SECONDARY SITE ENTRY SIGN		
	QUANTITY	LOCATION
	2	Sawmill Road & Bright Road

DR-01 PRIMARY DIRECTIONAL SIGN		
	QUANTITY	LOCATION
	2	Primary Campus Intersections
DR-02 SECONDARY DIRECTIONAL SIGN		
	QUANTITY	LOCATION
	7	Road & Main Campus Intersections
DR-03 SECONDARY DIRECTIONAL SIGN		
	QUANTITY	LOCATION
	33	Secondary Campus Intersections
DR-04 SECONDARY DIRECTIONAL SIGN		
	QUANTITY	LOCATION
	2	Bright Road Entry & Access Drive Intersection

MOUNT CARMEL HEALTH SYSTEM
SIGN QUANTITIES



462 S Ludlow St.
 Columbus, Ohio, 43215

t: 614.621.2796
www.mkskstudios.com

Client:



Project:

**Mount Carmel Northwest Health
 Campus
 Wayfinding Signage System**

Project Number: C22524
Wayfinding Signage System

11.22.2024

Revisions:

**Amended Final Development
 Plan**

Sign Name
 GENERAL - SIGN QUANTITIES &
 TYPES

SE-01 PRIMARY SITE ENTRY SIGN		
	QUANTITY	LOCATION
	1	Emerald Parkway
SE-02 SECONDARY SITE ENTRY SIGN		
	QUANTITY	LOCATION
	2	Sawmill Road & Bright Road

DR-01 PRIMARY DIRECTIONAL SIGN		
	QUANTITY	LOCATION
	3	Primary Campus Intersections
DR-02 SECONDARY DIRECTIONAL SIGN		
	QUANTITY	LOCATION
	7	Road & Main Campus Intersections
DR-03 SECONDARY DIRECTIONAL SIGN		
	QUANTITY	LOCATION
	31	Secondary Campus Intersections
DR-04 SECONDARY DIRECTIONAL SIGN		
	QUANTITY	LOCATION
	2	Bright Road Entry & Access Drive Intersection

MOUNT CARMEL HEALTH SYSTEM
SIGN QUANTITIES



462 S Ludlow St.
 Columbus, Ohio, 43215

t: 614.621.2796

www.mkskstudios.com

Site Signs - Parameters & Quantities

Sign Code	Sign Name	City of Dublin Ordinance Type	Mounting Type	Location	Illumination	ft ²	Qty.
SE-01	Primary Site Entry Sign	Site Entry Sign	Ground	Site Entry - Emerald Parkway	Internal	50	1
SE-02	Secondary Site Entry Sign	Site Entry Sign	Ground	Site Entry - Sawmill Rd. & Bright Rd.	Internal	34	2
DR-01	Primary Directional Sign	Primary Directional Sign	Ground	Internal Site Loop Road	Internal	28	2
DR-02	Secondary Directional Sign	Secondary Directional Sign	Ground	Site Entry - Emerald Parkway & Internal Site Loop Road	Internal	16	7
DR-03	Secondary Directional Sign	Secondary Directional Sign	Ground	Internal Site	External	4	33
DR-04	Secondary Directional Sign	Secondary Directional Sign	Ground	Bright Rd. Site Entry & Internal Site Loop Road	N/A	9	2

Client:



Project:

Mount Carmel Northwest Health
 Campus
 Wayfinding Signage System

Project Number: C22524
 Wayfinding Signage System

Exterior Signage Design Updates
 Issued For Coordination & Discussion

06.20.2022

Revisions:

Design Intent

Sign Name

GENERAL - SIGN QUANTITIES &
 TYPES

Building Signs - Parameters & Quantities

Sign Code	Sign Name	City of Dublin Ordinance Type	Mounting Type	Location	Illumination	ft ²	Qty.
BE-01	Building Entrance Sign	Building Entrance Sign	Wall/Canopy	Main & Medical Office Building Entries	Internal	50	2
BE-02	Building Entrance Sign - ER	Building Entrance Sign	Wall/Canopy	ED & Ambulance Entries	Internal	34	2
WL-01	Primary Building ID Sign	Building ID Sign - Wall Sign	Wall	Building Equipment Screen	Internal	350	2
WL-02	Secondary Building ID Sign	Building ID Sign - Wall Sign	Wall	Building Facade	Internal	96	1
WL-03	Secondary Building ID Sign	Building ID Sign - Wall Sign	Wall	Building Facade	Internal	46	1

MOUNT CARMEL HEALTH SYSTEM
SIGN QUANTITIES



462 S Ludlow St.
 Columbus, Ohio, 43215

t: 614.621.2796

www.mkskstudios.com

Site Signs - Parameters & Quantities

Sign Code	Sign Name	City of Dublin Ordinance Type	Mounting Type	Location	Illumination	ft ²	Qty.
SE-01	Primary Site Entry Sign	Site Entry Sign	Ground	Site Entry - Emerald Parkway	Internal	50.05	1
SE-02	Secondary Site Entry Sign	Site Entry Sign	Ground	Site Entry - Sawmill Rd. & Bright Rd.	Internal	34	2
DR-01	Primary Directional Sign	Primary Directional Sign	Ground	Internal Site Loop Road	Internal	28.16	3
DR-02	Secondary Directional Sign	Secondary Directional Sign	Ground	Site Entry - Emerald Parkway & Internal Site Loop Road	Internal	16.25	7
DR-03	Secondary Directional Sign	Secondary Directional Sign	Ground	Internal Site	External	3.75	31
DR-04	Secondary Directional Sign	Secondary Directional Sign	Ground	Bright Rd. Site Entry & Internal Site Loop Road	N/A	8.45	2

Client:



Project:

Mount Carmel Northwest Health
 Campus
 Wayfinding Signage System

Project Number: C22524
 Wayfinding Signage System

11.22.2024

Revisions:

Amended Final Development Plan

Sign Name
 GENERAL - SIGN QUANTITIES & TYPES

Building Signs - Parameters & Quantities

Sign Code	Sign Name	City of Dublin Ordinance Type	Mounting Type	Location	Illumination	ft ²	Qty.
BE-01-001	Building Entrance Sign - HOS	Building Entrance Sign	Wall/Canopy	Main Hospital Entrance	Internal	11.33	1
BE-01-002	Building Entrance Sign - MOB	Building Entrance Sign	Wall/Canopy	Medical Office Building	Internal	11.08	1
BE-02-001	Building Entrance Sign - ED	Building Entrance Sign	Wall/Canopy	Emergency Entrance	Internal	8.67	1
BE-02-002	Building Entrance Sign - AMB	Building Entrance Sign	Wall/Canopy	Ambulance Entrance	Internal	8.5	1
WL-01	Primary Building ID Sign	Building ID Sign - Wall Sign	Wall	Building Equipment Screen	Internal	348	2
WL-02	Secondary Building ID Sign	Building ID Sign - Wall Sign	Wall	Building Facade	Internal	198.1	1
WL-03	Secondary Building ID Sign	Building ID Sign - Wall Sign	Wall	Building Facade	Internal	97.25	1

Client:



MOUNT CARMEL
A Member of Trinity Health

Project:

**Mount Carmel Northwest Health
Campus
Wayfinding Signage System**

Project Number: C22524
Wayfinding Signage System

**Exterior Signage Design Updates
Issued For Coordination & Discussion**

06.20.2022

Revisions:

Elevation Updated 07.13.2022

Design Intent

Set Out

Sign Name

Building Entrance Sign

Canopy Emergency

BE-02

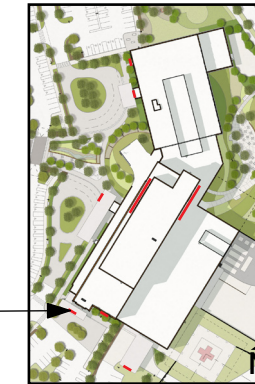
Notes:

1. Internally illuminated awning mounted sign (see sign layout for details).
2. Awning over entry.
3. Sign centered on awning face over entry doors.

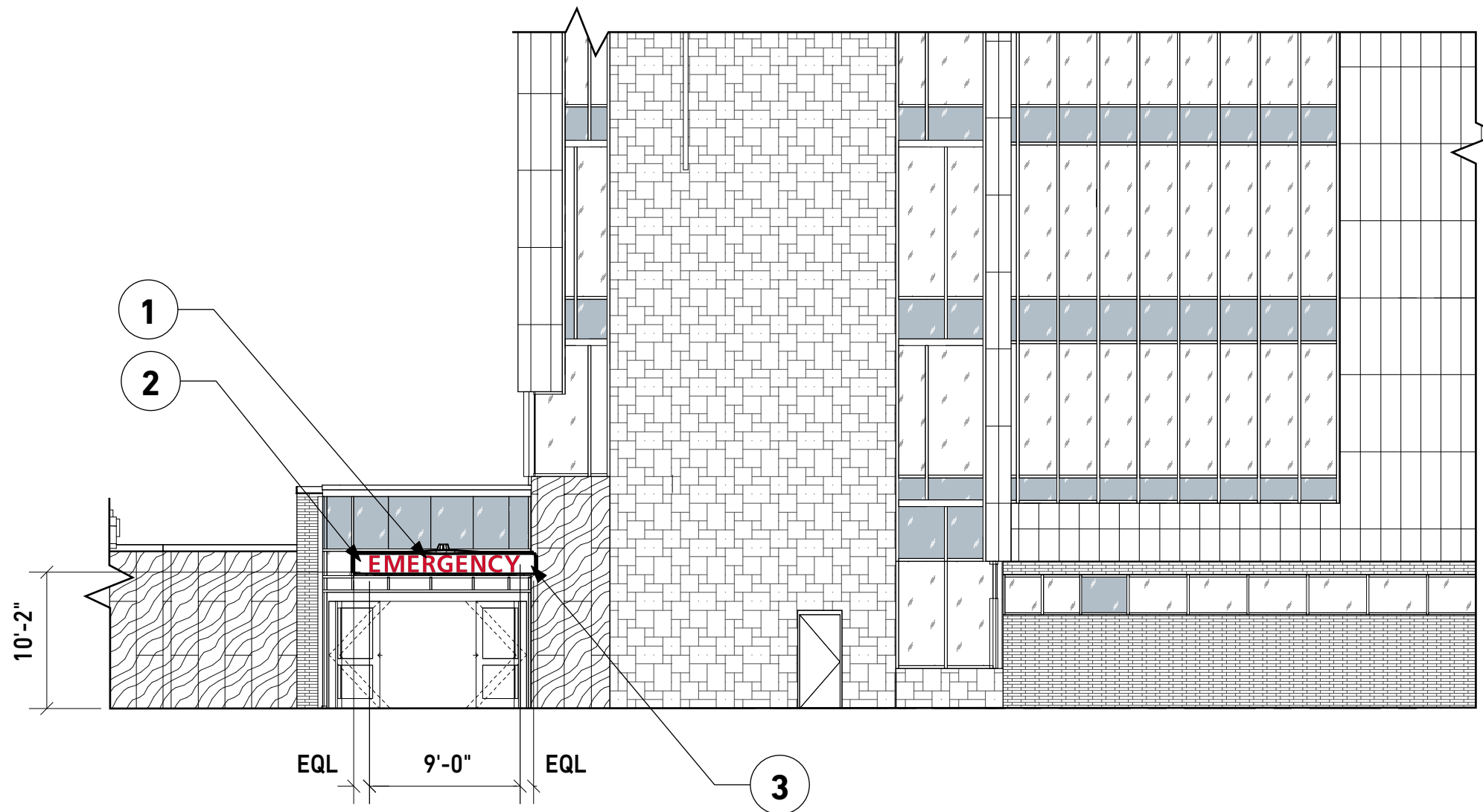
Signage Parameters:

- Overall Sign Dimensions - 9'-0" x 1'-0"
- Total Signage Area - 9 ft²
- Height from Grade - 11'-2" (to top of sign)

BE-02-001



Locations



01 | **Emergency Entrance - South Elevation**
Scale: 1:128

Client:



MOUNT CARMEL
A Member of Trinity Health

Project:

**Mount Carmel Northwest Health
Campus
Wayfinding Signage System**

Project Number: C22524
Wayfinding Signage System

11.22.2024

Revisions:

**Amended Final Development
Plan
Set Out**

Sign Name

Building Entrance Sign

Canopy Emergency

BE-02

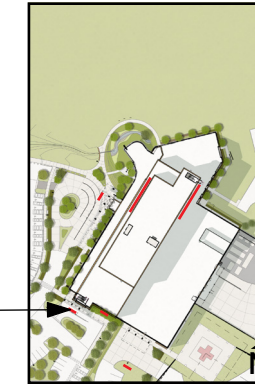
Notes:

1. Internally illuminated awning mounted sign (see sign layout for details).
2. Awning over entry.
3. Sign centered on awning face over entry doors.

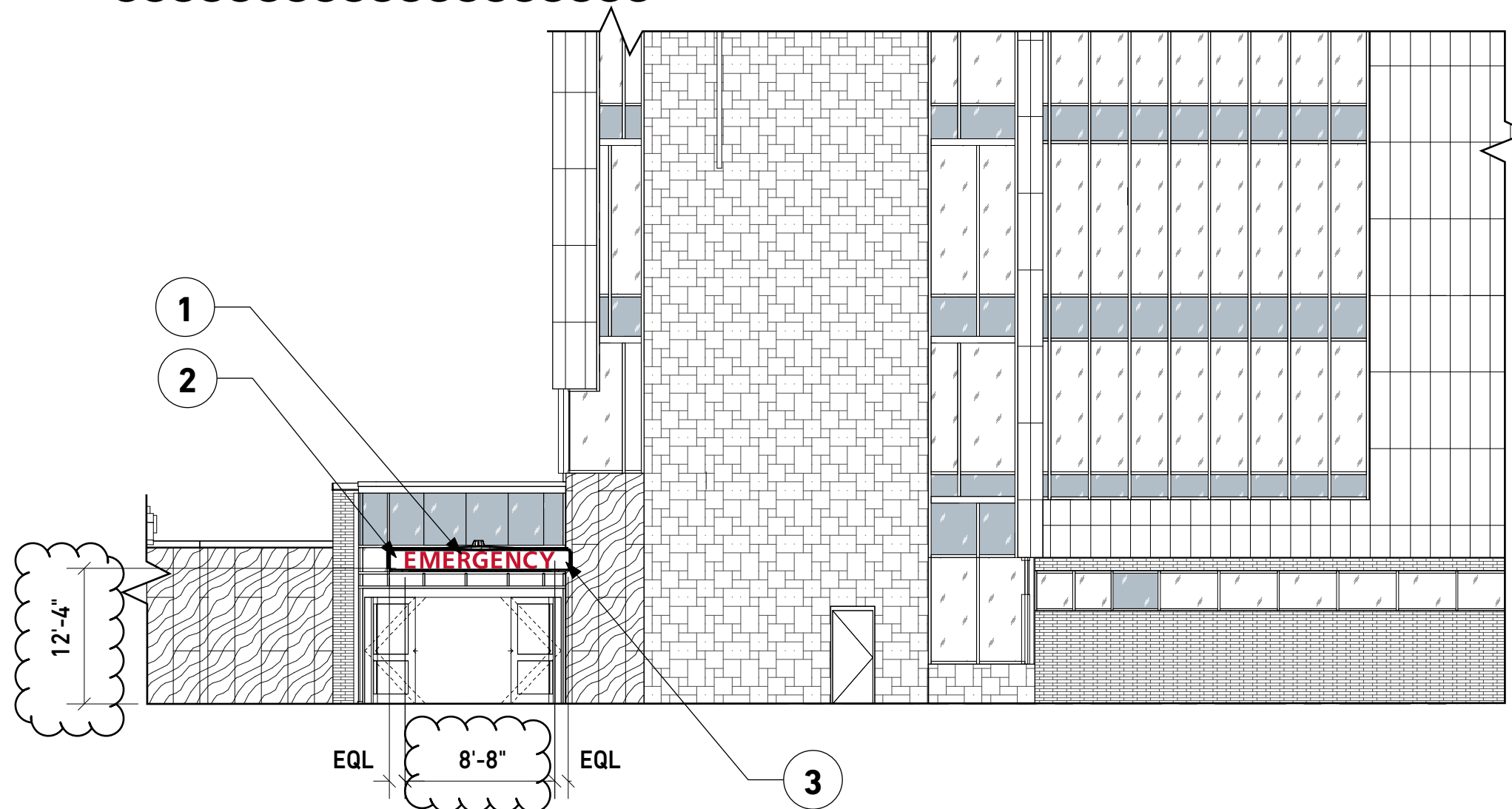
Signage Parameters:

- Overall Sign Dimensions - 8'-8" x 1'-0"
- Total Signage Area - 8.67 ft²
- Height from Grade - 12'-4" to bottom of canopy

BE-02-001

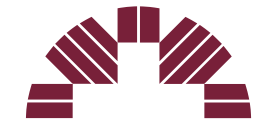


Locations



01 | **Emergency Entrance - South Elevation**
Scale: 1:128

Client:



MOUNT CARMEL
A Member of Trinity Health

Project:

**Mount Carmel Northwest Health
Campus
Wayfinding Signage System**

Project Number: C22524
Wayfinding Signage System

**Exterior Signage Design Updates
Issued For Coordination & Discussion**

06.20.2022

Revisions:

Elevation Updated 07.13.2022

Design Intent

Set Out

Sign Name

Building Entrance Sign

Canopy Emergency

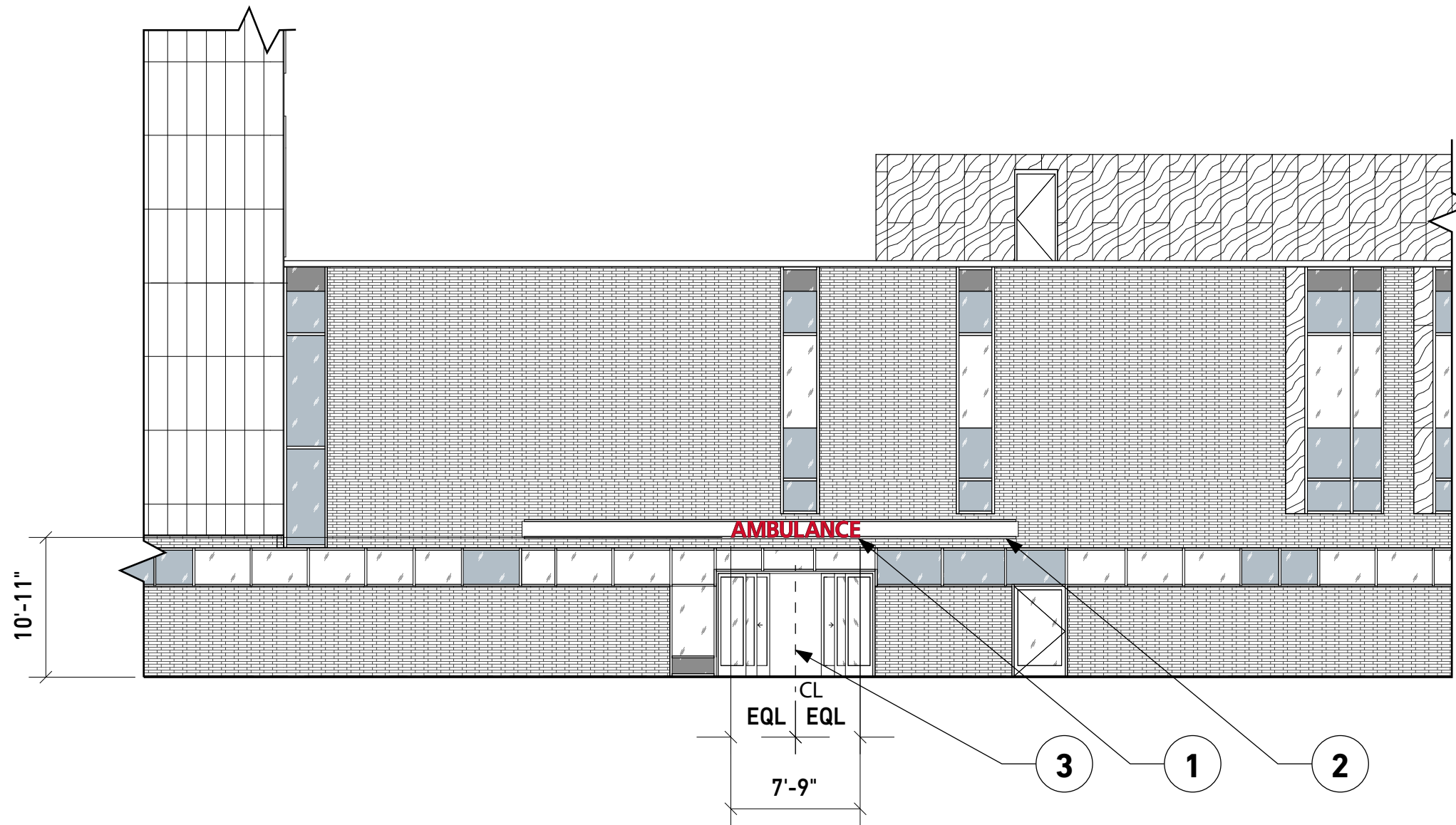
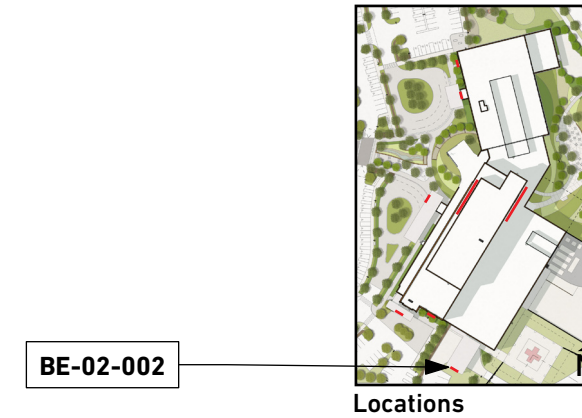
BE-02

Notes:

1. Internally illuminated awning mounted sign (see sign layout for details).
2. Awning over entry.
3. Sign centered over entry doors.

Signage Parameters:

- Overall Sign Dimensions - 7'-9" x 1'-0"
- Total Signage Area - 7.75 ft²
- Height from Grade - 11'-11" (to top of sign)



01 | Ambulance Entrance - South Elevation
Scale: 1:128

Client:



MOUNT CARMEL
A Member of Trinity Health

Project:

**Mount Carmel Northwest Health
Campus
Wayfinding Signage System**

Project Number: C22524
Wayfinding Signage System

11.22.2024

Revisions:

**Amended Final Development
Plan
Set Out**

Sign Name

Building Entrance Sign

Canopy Emergency

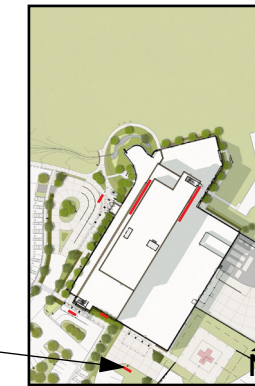
BE-02

Notes:

1. Internally illuminated awning mounted sign (see sign layout for details).
2. Awning over entry.
3. Sign centered over entry doors.

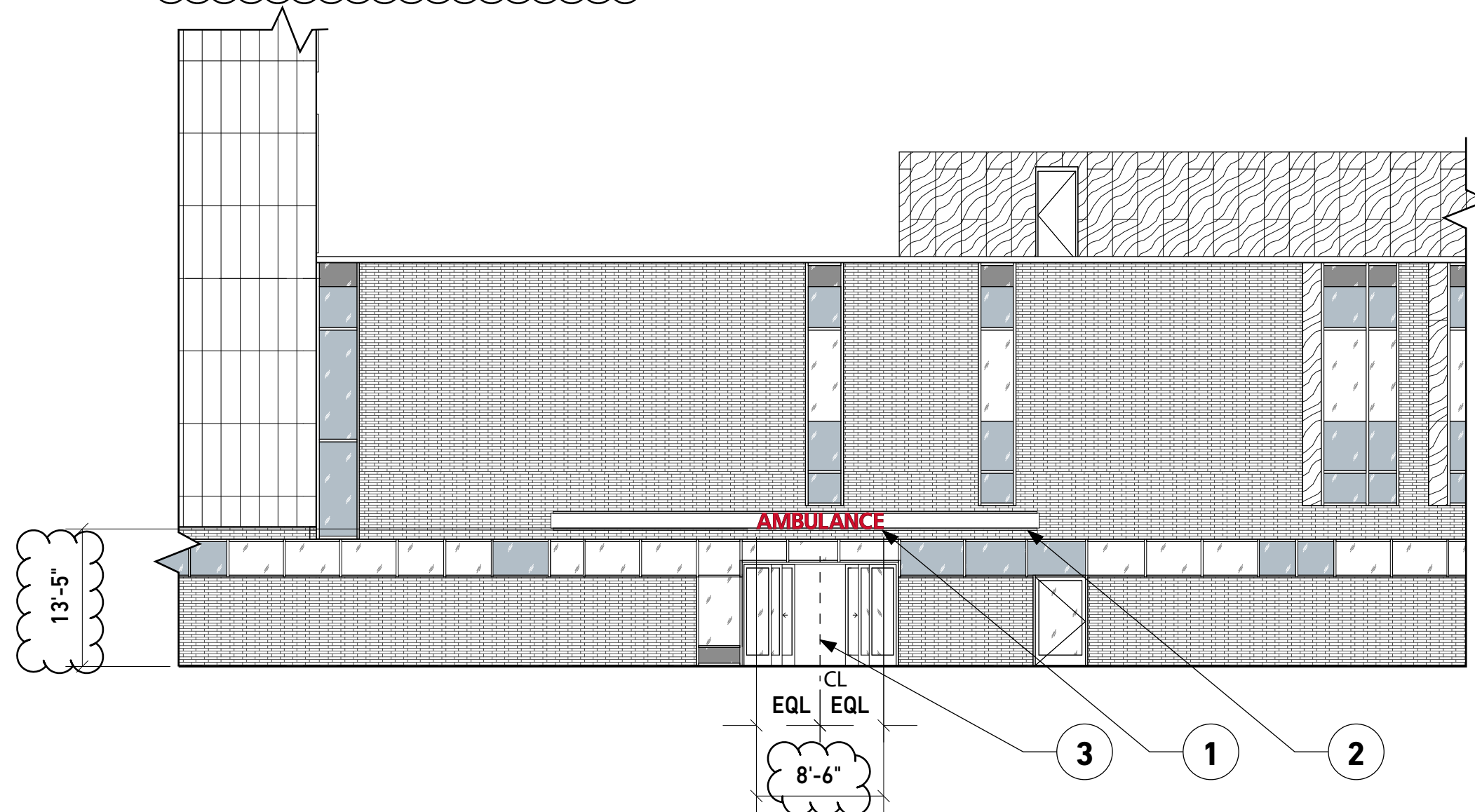
Signage Parameters:

- Overall Sign Dimensions - 8'-6" x 1'-0"
- Total Signage Area - 8.5 ft²
- Height from Grade - 13'-5" to bottom of canopy



Locations

BE-02-002



01 | Ambulance Entrance - South Elevation
Scale: 1:128

Client:



Project:

Mount Carmel Northwest Health
Campus
Wayfinding Signage System

Project Number: C22524
Wayfinding Signage System

Exterior Signage Design Updates
Issued For Coordination & Discussion

06.20.2022

Revisions:

Elevation Updated 07.13.2022

Design Intent

Set Out

Sign Name

Secondary Building ID Sign

Wall

WL-02

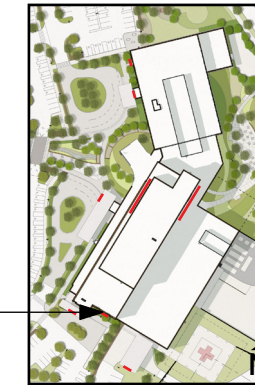
Notes:

1. Internally illuminated sign mounted to building's base structure (see sign layout for details).
Top of sign to align with the top of the adjacent curtain wall.
2. Metal clad facade.
3. Curtain wall.

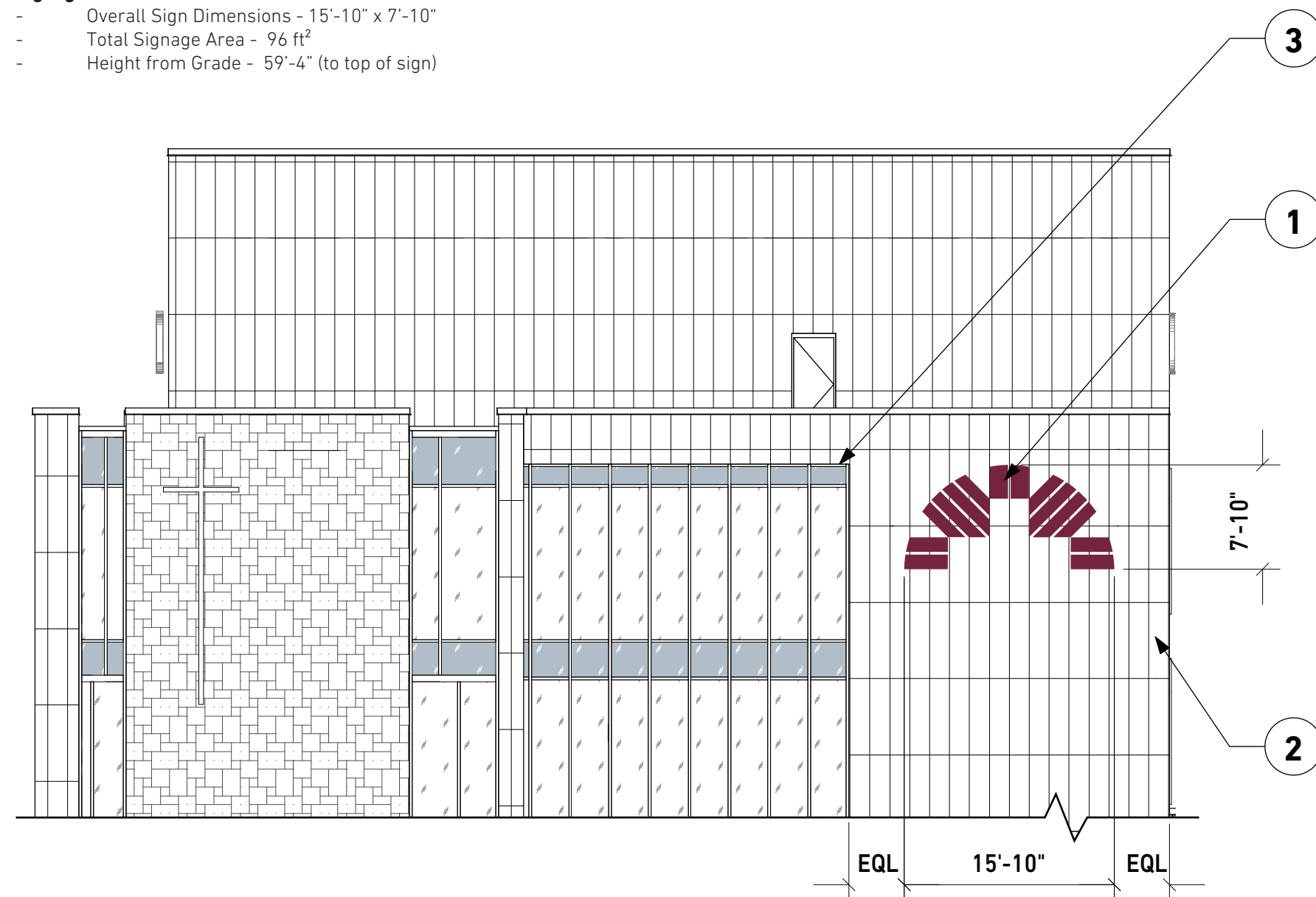
Signage Parameters:

- Overall Sign Dimensions - 15'-10" x 7'-10"
- Total Signage Area - 96 ft²
- Height from Grade - 59'-4" (to top of sign)

WL-02-001



Locations



01 Secondary Building ID Sign- South Elevation
Scale: 1:128

Client:



MOUNT CARMEL
A Member of Trinity Health

Project:

Mount Carmel Northwest Health
Campus
Wayfinding Signage System

Project Number: C22524
Wayfinding Signage System

11.22.2024

Revisions:

**Amended Final Development
Plan
Set Out**

Sign Name

Secondary Building ID Sign

Wall

WL-02

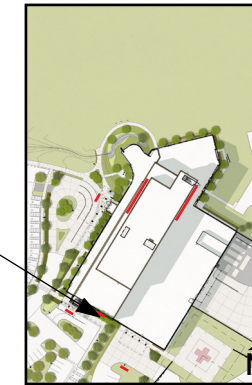
Notes:

1. Internally illuminated sign mounted to building's base structure (see sign layout for details).
Top of sign to align with the top of the adjacent curtain wall.
2. Metal clad facade.
3. Curtain wall.

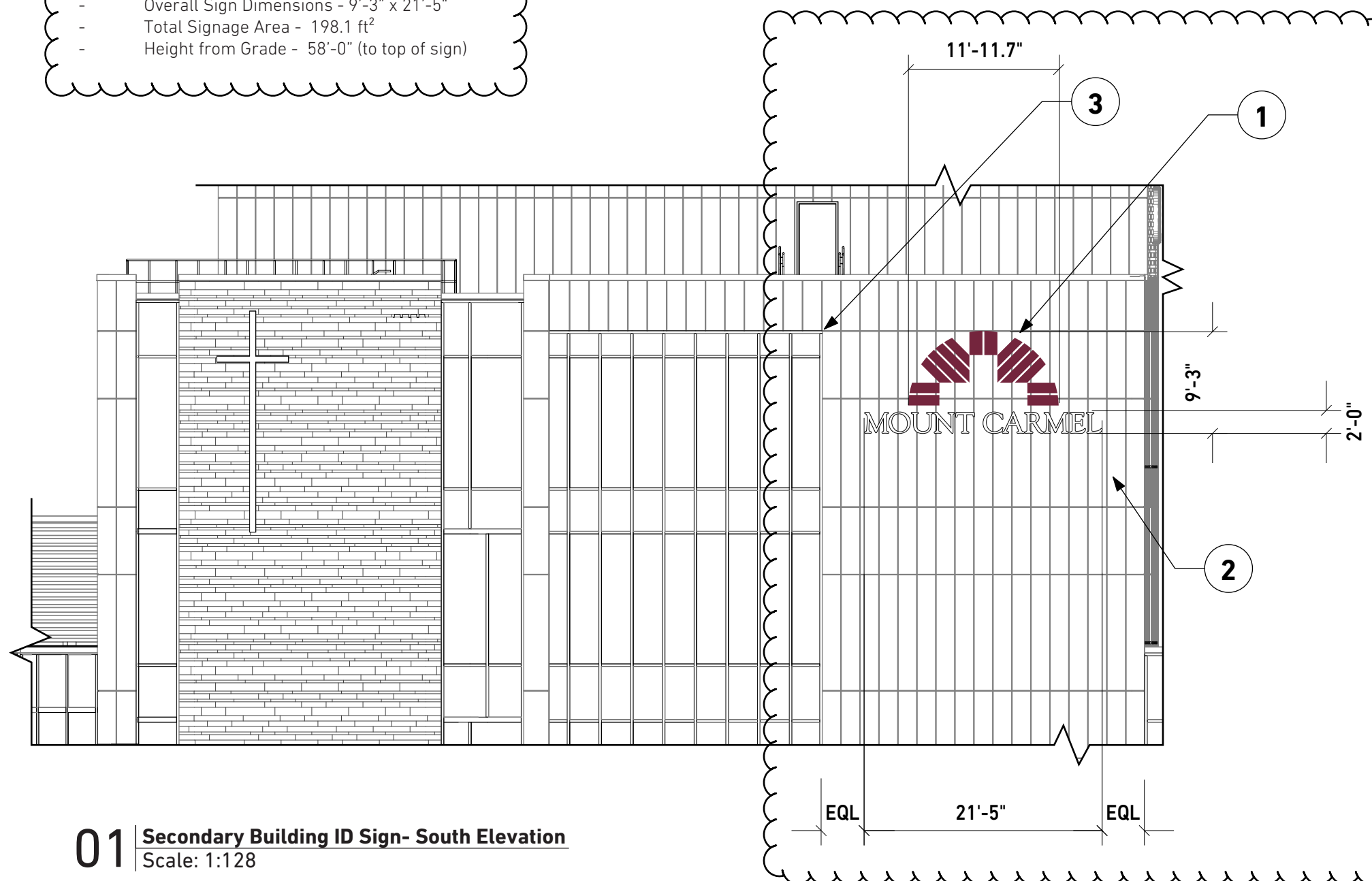
Signage Parameters:

- Overall Sign Dimensions - 9'-3" x 21'-5"
- Total Signage Area - 198.1 ft²
- Height from Grade - 58'-0" (to top of sign)

WL-02-001



Locations



01 Secondary Building ID Sign- South Elevation
Scale: 1:128

Client:



MOUNT CARMEL

A Member of Trinity Health

Project:

**Mount Carmel Northwest Health
Campus
Wayfinding Signage System**

Project Number: C22524
Wayfinding Signage System

**Exterior Signage Design Updates
Issued For Coordination & Discussion**

06.20.2022

Revisions:

Elevation Updated 07.13.2022

Design Intent

Set Out

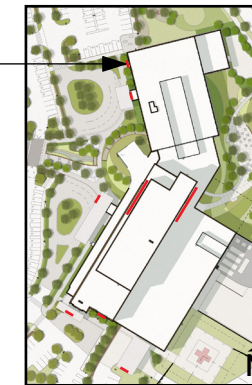
Sign Name

Secondary Building ID Sign

Wall

WL-03

WL-03-001



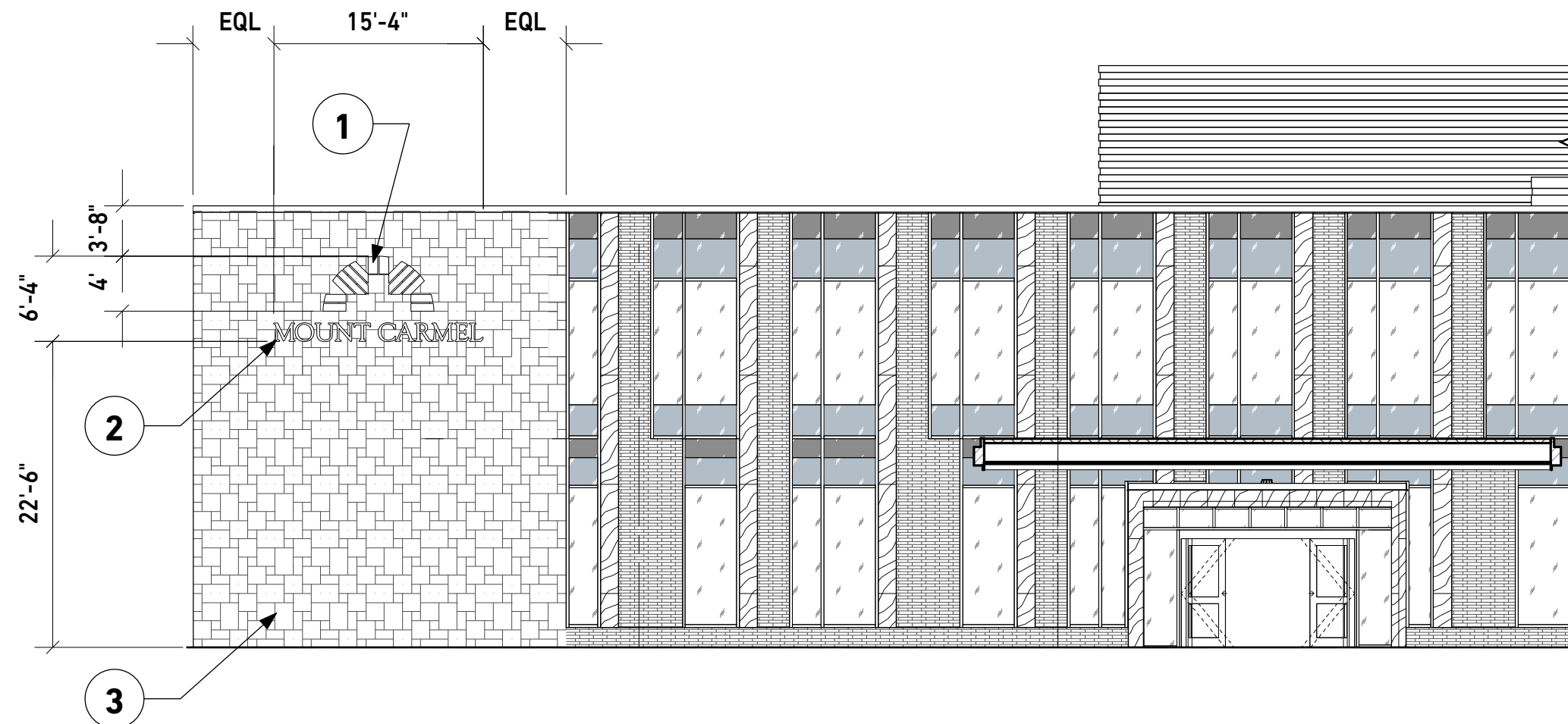
Locations

Notes:

1. Internally illuminated sign mounted to building facade (see sign layout for details).
2. Internally illuminated sign mounted to building facade (see sign layout for details).
3. Masonry Facade.

Signage Parameters:

- Overall Sign Dimensions - 15'-4" x 6'-4"
- Total Signage Area - 46 ft²
- Height from Grade - 29'-0" (to top of sign)



01 | **Secondary Building ID Sign- West Elevation**
Scale: 1:128

Client:



MOUNT CARMEL

A Member of Trinity Health

Project:

Mount Carmel Northwest Health
Campus
Wayfinding Signage System

Project Number: C22524
Wayfinding Signage System

11.22.2024

Revisions:

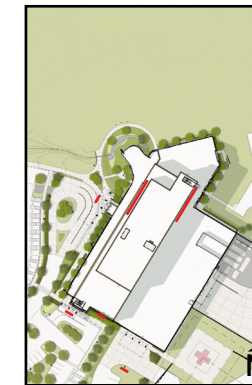
**Amended Final Development
Plan
Set Out**

Sign Name

Secondary Building ID Sign

Wall

WL-03



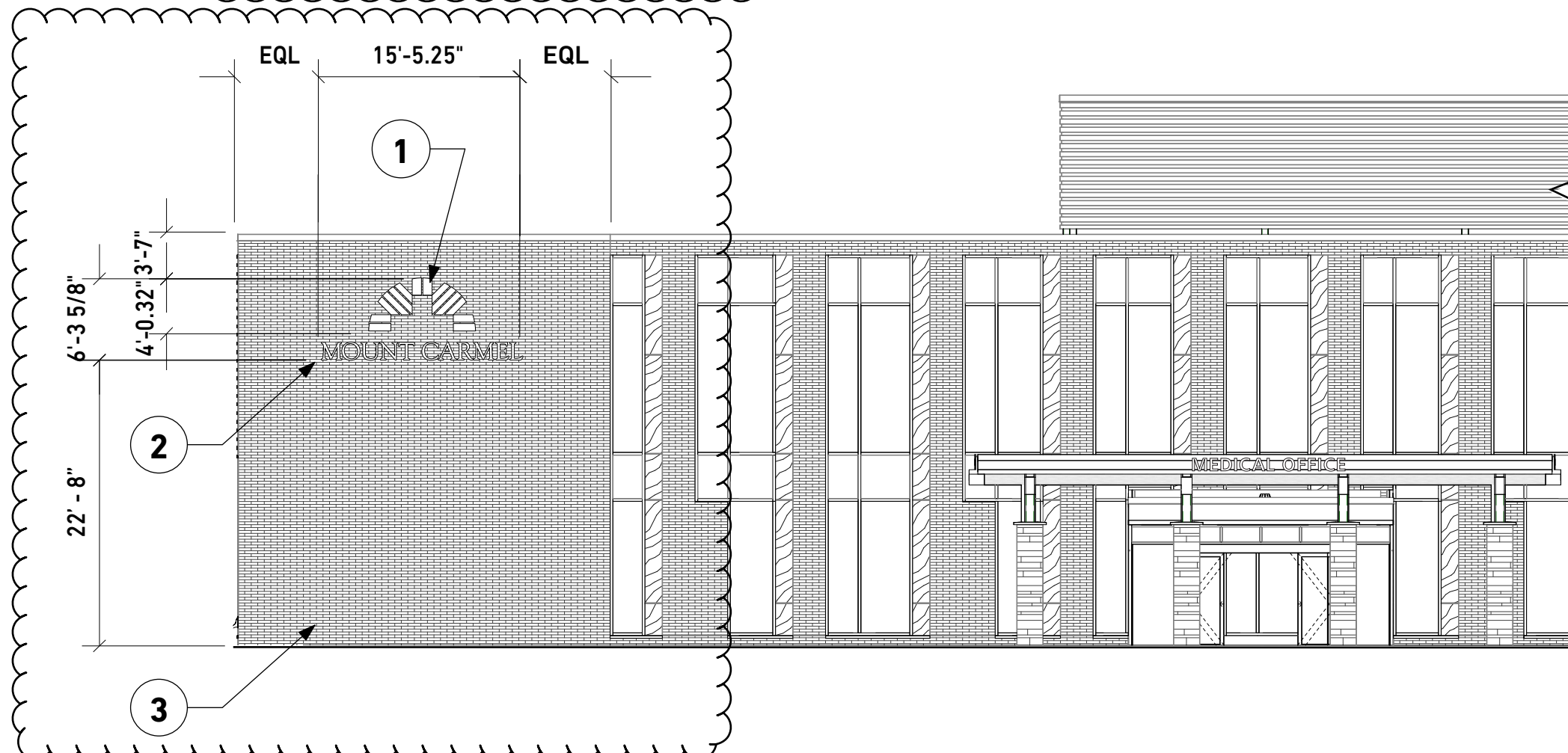
Locations

Notes:

1. Internally illuminated sign mounted to building facade (see sign layout for details).
2. Internally illuminated sign mounted to building facade (see sign layout for details).
3. Masonry Facade.

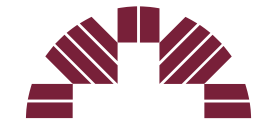
Signage Parameters:

- Overall Sign Dimensions - 15'- 5-1/4" x 6'- 3-5/8"
- Total Signage Area - 97.25 ft²
- Height from Grade - 28'-11-5/8" (to top of sign)



01 Secondary Building ID Sign- West Elevation
Scale: 1:128

Client:



MOUNT CARMEL
A Member of Trinity Health

Project:

**Mount Carmel Northwest Health
Campus
Wayfinding Signage System**

Project Number: C22524
Wayfinding Signage System

**Exterior Signage Design Updates
Issued For Coordination & Discussion**

06.20.2022

Revisions:

Design Intent

Detail

Sign Name

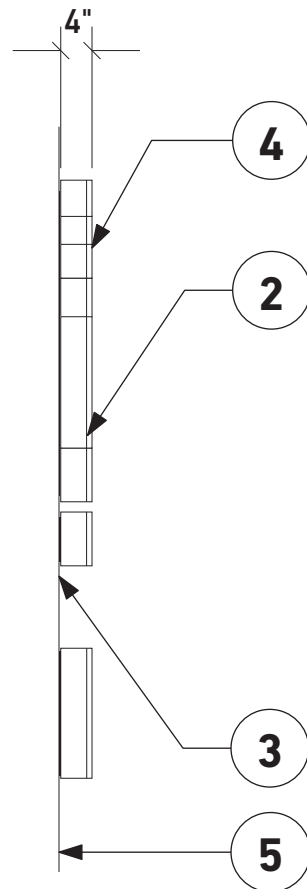
Secondary Building ID Sign

Wall

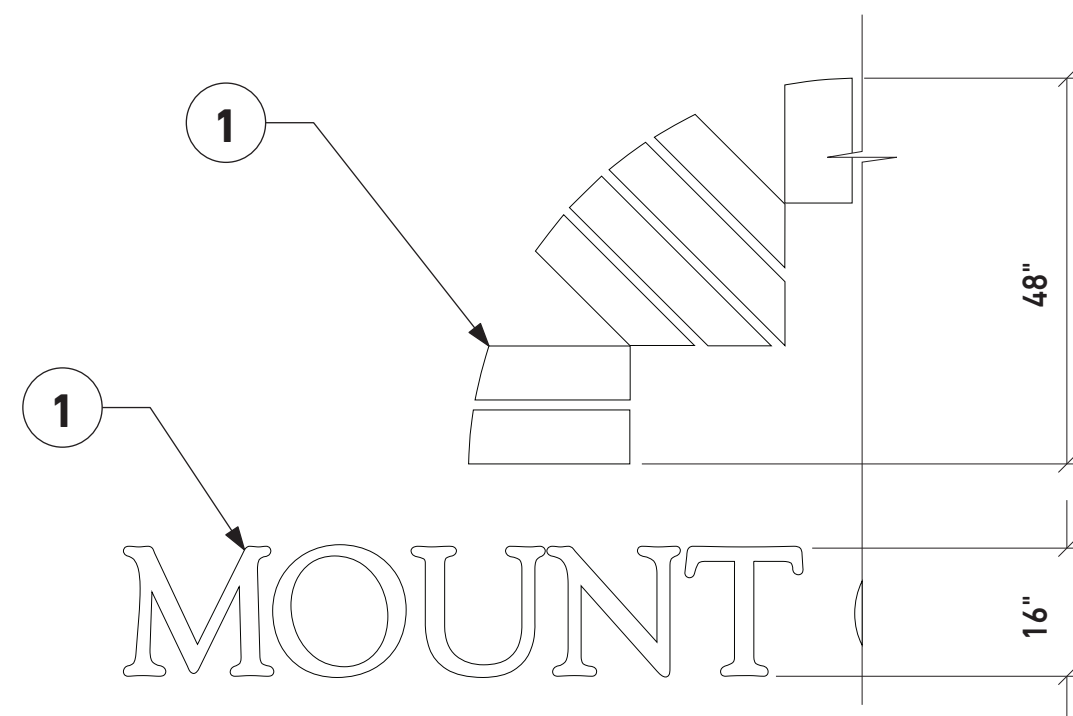
WL-03

Notes:

1. Internally illuminated individual aluminium letters and logo with opal acrylic faces. Sign White by day, illuminating white by night.
2. Aluminum sides and back with white 2Pac Polyurethane satin paint finish to match MP05780.
3. Letters and logo fixed to building structure through facade cladding. Details TBD.
4. Removable face frame.
5. Building Facade.



02 | End View
Scale: 1:24

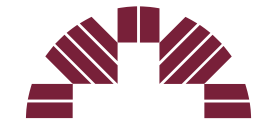


01 | Front View
Scale: 1:24

General Notes:

Sign contractor to ensure sign structure, footings and fixings are fit for purpose.
All footings and fixation methods to be certified by a qualified structural engineer licensed to practice in the state of Ohio.

Client:



MOUNT CARMEL
A Member of Trinity Health

Project:

**Mount Carmel Northwest Health
Campus
Wayfinding Signage System**

**Project Number: C22524
Wayfinding Signage System**

11.22.2024

Revisions:

**Amended Final Development
Plan
Detail**

Sign Name

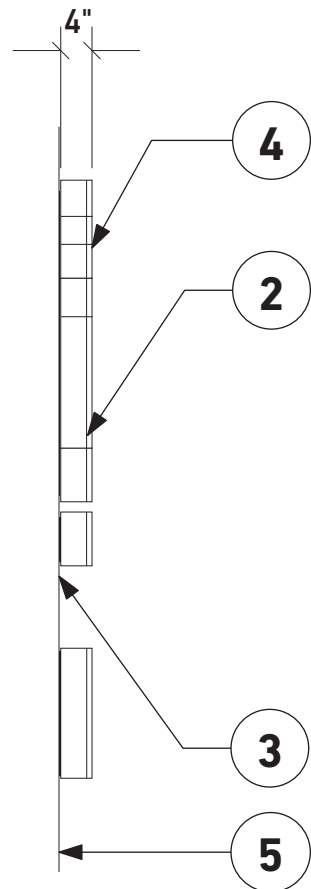
Secondary Building ID Sign

Wall

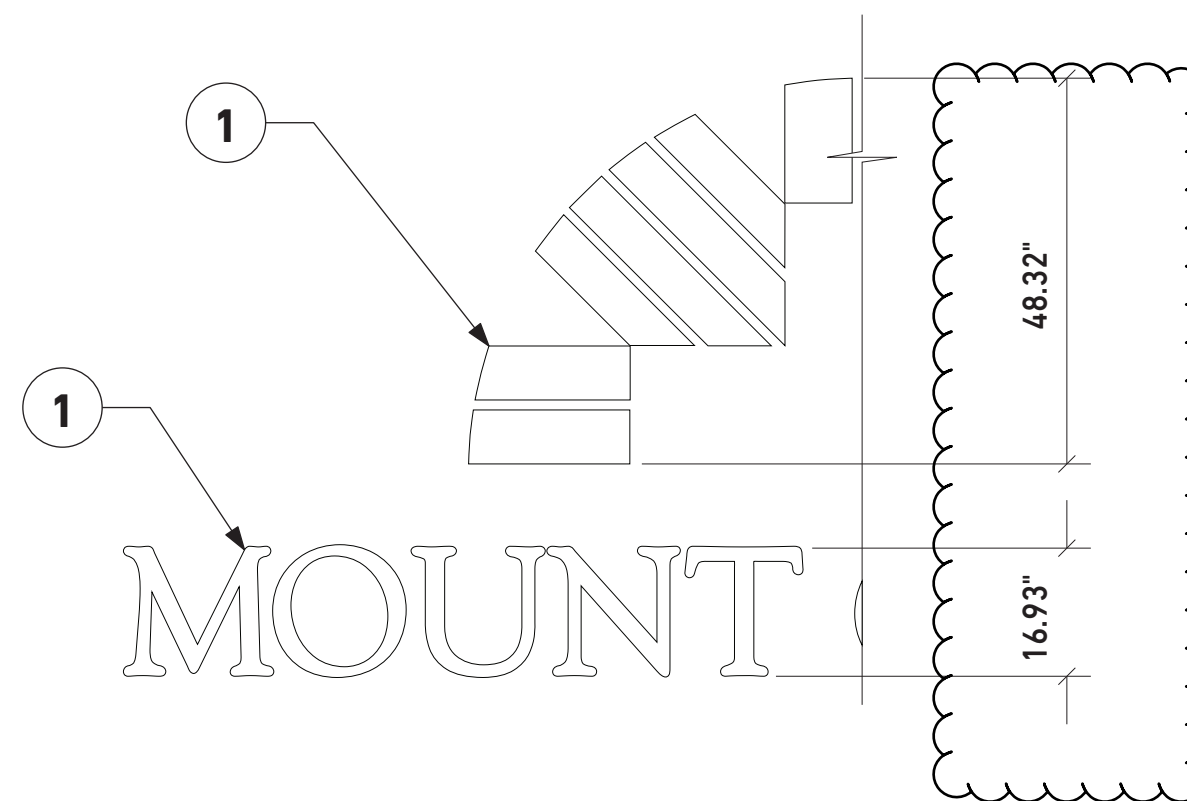
WL-03

Notes:

1. Internally illuminated individual aluminium letters and logo with opal acrylic faces. Sign White by day, illuminating white by night.
2. Aluminum sides and back with white 2Pac Polyurethane satin paint finish to match MP05780.
3. Letters and logo fixed to building structure through facade cladding. Details TBD.
4. Removable face frame.
5. Building Facade.



02 End View
Scale: 1:24



01 Front View
Scale: 1:24

General Notes:

Sign contractor to ensure sign structure, footings and fixings are fit for purpose.
All footings and fixation methods to be certified by a qualified structural engineer licensed to practice in the state of Ohio.



SE-01 Primary Site Entry Sign
(Emerald Parkway)

Total Signage Area:
50² ft

SE-02 Secondary Site Entry Sign
(Sawmill Road)
(Bright Road)

Total Signage Area:
34² ft



DR-01 Primary Directional Sign
(Primary Campus Intersections)

Total Signage Area:
28.16² ft

DR-02 Secondary Directional Sign
(Road & Main Campus Intersections)

Total Signage Area:
16.25² ft

DR-03 Secondary Directional Sign
(Secondary Campus Intersections)

Total Signage Area:
4² ft

DR-04 Secondary Directional Sign
(Bright Road Entry & Access Drive Intersection)

Total Signage Area:
8.5² ft

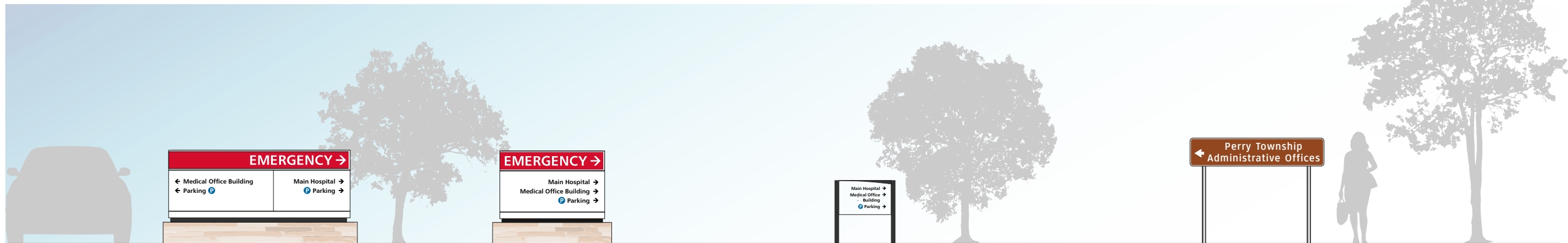


SE-01 Primary Site Entry Sign
(Emerald Parkway)

Total Signage Area:
50.05² ft

SE-02 Secondary Site Entry Sign
(Sawmill Road)
(Bright Road)

Total Signage Area:
34² ft



DR-01 Primary Directional Sign
(Primary Campus Intersections)

Total Signage Area:
28.16² ft

DR-02 Secondary Directional Sign
(Road & Main Campus Intersections)

Total Signage Area:
16.25² ft

DR-03 Secondary Directional Sign
(Secondary Campus Intersections)

Total Signage Area:
3.75² ft

DR-04 Secondary Directional Sign
(Bright Road Entry & Access Drive Intersection)

Total Signage Area:
8.45² ft

SafeTouch™ 150

PROJECT:
TYPE:
SOURCE:
NOTES:

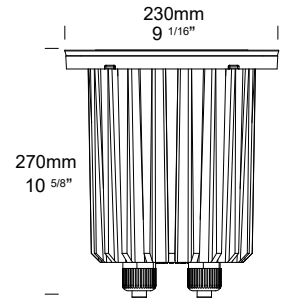
SPECIFICATIONS IK10 IP68

LED Chip	Cree CXB 2540 field replaceable LED board
Luminaire Output*	5000 Lumens @ 1400 (52watts)
Lumens Per Watt*	90 Lumens minimum @ 52 watts
CRI (3000K)	80 Standard, 90+ Optional
LED Life Expectancy	50,000 hours L70
Colour Temperatures	2700K, 3000K, 4000K, 3000K (90+ CRI)
Beam Angles	22, 33, 51
Ingress Protection	IP68 *not for use in pool or ponds
Inverse Kinematics Rating	IK10
Maximum Load	2000kgs (4400lbs)
Warranty	Electronics = 5 years Aluminium Body = 5 years Stainless Steel Flange = 10 years Solid Bronze Flange = 10 years
Standards	BS/EN 60598.2.2 cUL 1598 CE
B Number	94.05

*Delivered from the Luminaire with unobstructed beam



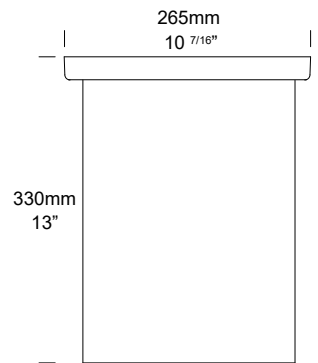
ST150/DB
Direct Burial Model



Direct Burial Model
ST150/DB



ST150/SC
Canister Model



Canister Model (standard)
ST150/SC

PRODUCT CONFIGURATION

Please fill in appropriate codes into boxes provided

Cat. No. ST150

Luminaire	Power	Material/ Flange	Beam	Colour	Accessories
<input type="text" value="ST150/SC"/> Canister Model	<input type="checkbox"/> SR Series Remote - 1400mA Input, 52W Output <input type="checkbox"/> R Retro® - 120-277 VAC Input Parallel Wired	<input type="checkbox"/> SBZ Solid Bronze Flange <input type="checkbox"/> SS Stainless Steel Flange	<input type="checkbox"/> 22 22° <input type="checkbox"/> 33 33° <input type="checkbox"/> 51 51°	<input type="checkbox"/> 2 2700K <input type="checkbox"/> 3 3000K <input type="checkbox"/> 4 4000K <input type="checkbox"/> 39 3000K, 90+ CRI	<input type="checkbox"/> HCL/ST150 Hex Cell Louvre <input type="checkbox"/> GS15 Glare Shield <input type="checkbox"/> ISNT Internal Snoot <input type="checkbox"/> LENST150FR Frosted Lens <input type="checkbox"/> LENST150CAS Anti Slip Lens <input type="checkbox"/> CJK Cable Joint Kit
<input type="text" value="ST150/DB"/> Direct Burial Model					

SR
Series Remote Driver
Constant current driver (included, not installed).
Individual fixtures require:
37VDC @1400mA
0-10V Dimming

R
Retro® 110-277VAC Driver
Integrated constant current driver (included).
Input: 120, 240, 277 VAC
Output: 60 Watts total
37VDC @ 1400mA
(Dimming option available 0-10V)

Additional Comments:

*Due to continued product enhancements, specifications may change without notification.

LUMINAIRE CONSTRUCTION

CNC machined from one of the following metals:

Body - Cast from virgin high corrosion resistant, low copper content (0.001%) aluminium alloy. Finished with chromate substrate, Epoxy layer and a UV resistant polyester powder coat colour.

Colour - Black.

Flanges - Machined from either

Solid Brone 260mm x 6mm (10 1/4" x 1/4")

316 Stainless Steel 260mm x 6mm

(10 1/4" x 1/4")

All fixings are made from 316 Stainless Steel

Cable:

Water resistant rubber SWOOJ cable with HUNZA™ Anti-Syphon™ barrier system

Gaskets:

Silicone, iron impregnated 220°C (428°F).

Step Lens:

12mm (1/2") extra clear, low iron, shatter resistant glass.

Lifetime warranty.

Adjustability:

The gimbal is fully adjustable, allowing 360° rotation and 0-20° elevation.

Mounting:

The ST150 is available with a double layer coated alloy mounting canister for casting into the ground or into concrete.

Maximum drive over speed 10 kph (6mp/h) with a maximum load rating of 2000kgs (4400lbs).

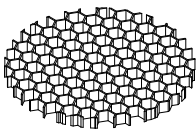
Luminaire Weight:

Stainless Steel 10kg (22lbs 1oz)

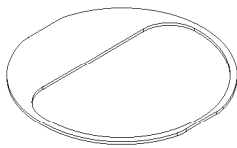
Solid Bronze 11kg (24lbs 4oz)



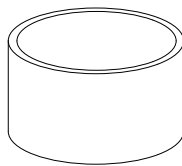
ACCESSORIES



Hex Cell Louvre



Glare Shield

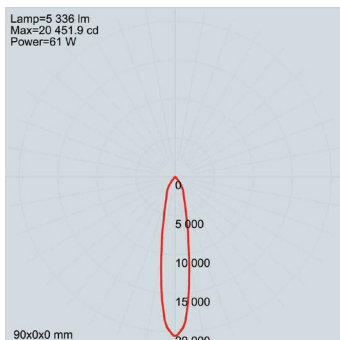


Internal Snoot

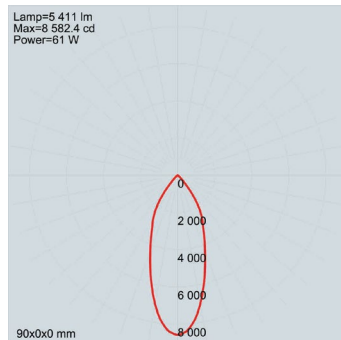
BEAM ANGLES

High efficiency Reflectors. Field replaceable

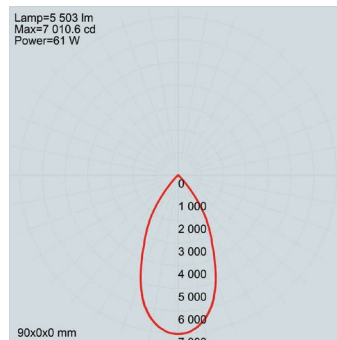
IES files available for download: hunzalighting.com/downloads



22° FWHM REFLECTOR



33° FWHM REFLECTOR

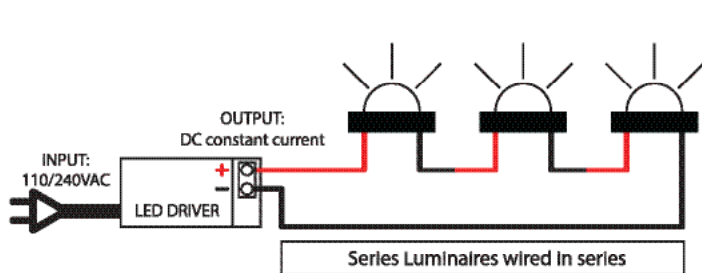


51° FWHM REFLECTOR

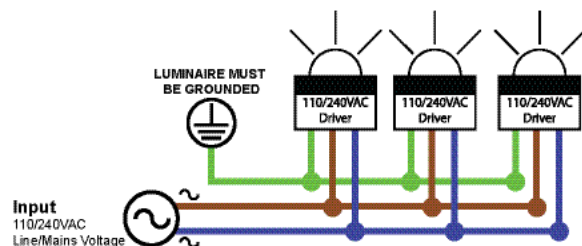
WIRING GUIDE

Available for download: hunzalighting.com/downloads

NOTE: Diagrams are a guide only, wire colours and polarity may change depending on fixture and country.



Series/Remote Driver



Retro® - 120-277 VAC Driver

*Due to continued product enhancements, specifications may change without notification.



HUNZA LIGHTING
130 Felton Mathew Ave
Saint Johns
Auckland 1072
New Zealand

Ph: +64-9-528-9471
hunza@hunza.co.nz
www.hunzalighting.com

INTERNATIONAL CONTACTS:
www.hunzalighting.com/contact

This document contains proprietary information of Hunza™. Its receipt or possession does not convey any rights to reproduce or disclose its content.