

SITE // TOTALS

v1.0

PARKING //

TOTAL PARKING // 107 PROVIDED (+/- 3 HC)

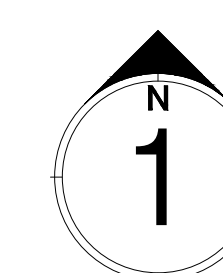
INVENTORY SF // 17,729 SF

DISPLAY PADS (2) // 03,826 SF

TOTAL SF // 21,555 SF

NOTE:

GREEN HATCHED AREA TO BE LANDSCAPED



Proposed Site Plan

SCALE 1" = 30'-0"

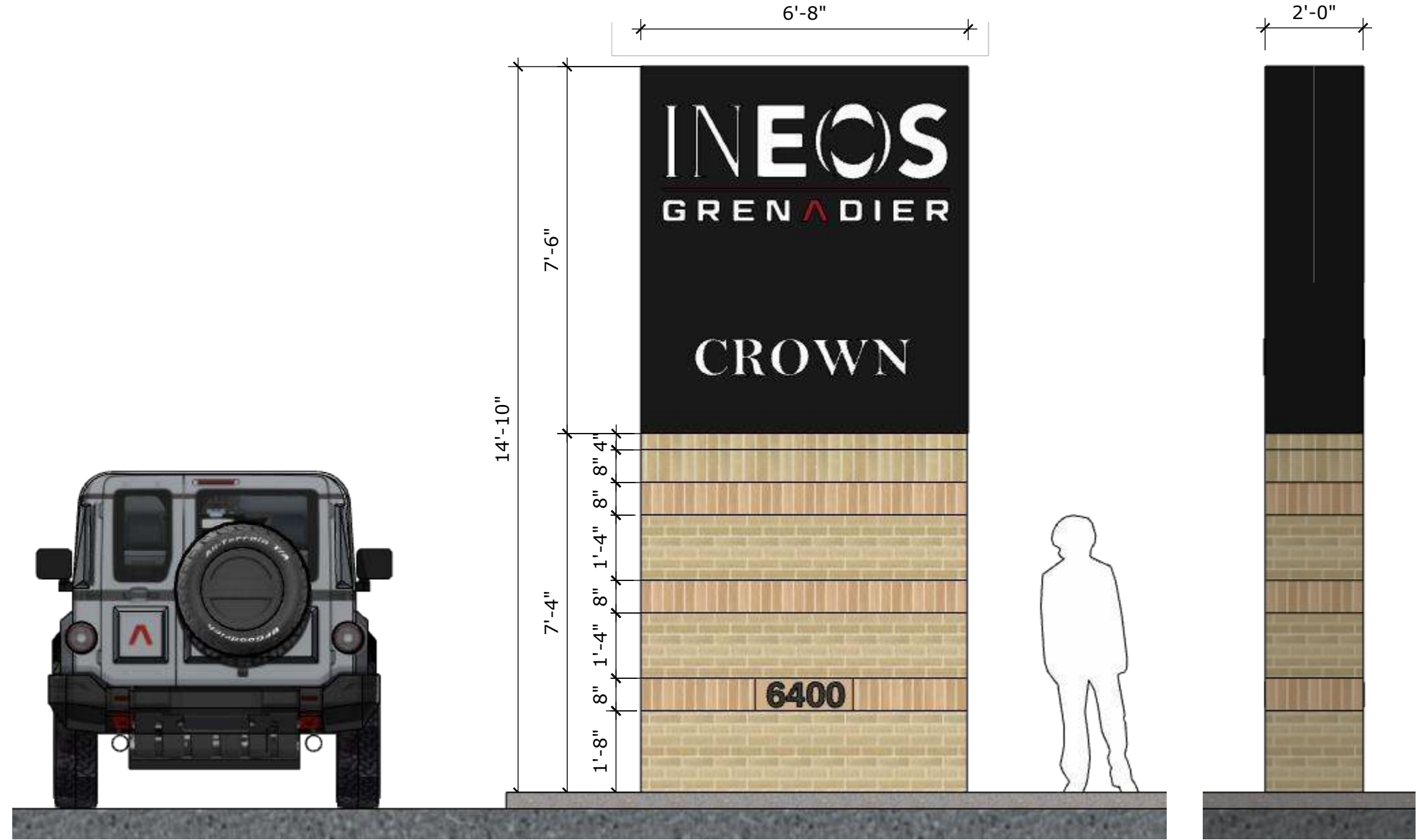
30 15 0



EXISTING SIGNAGE

EXISTING MONUMENT SIGN BASE TO REMAIN

REMOVE UPPER METAL BOX SIGN AND REPLACE WITH SAME SIZE NEW BLACK METAL BOX SIGN. NEW BOX SIGN TO HAVE ROUTED INTERNALLY ILLUMINATED LETTERING



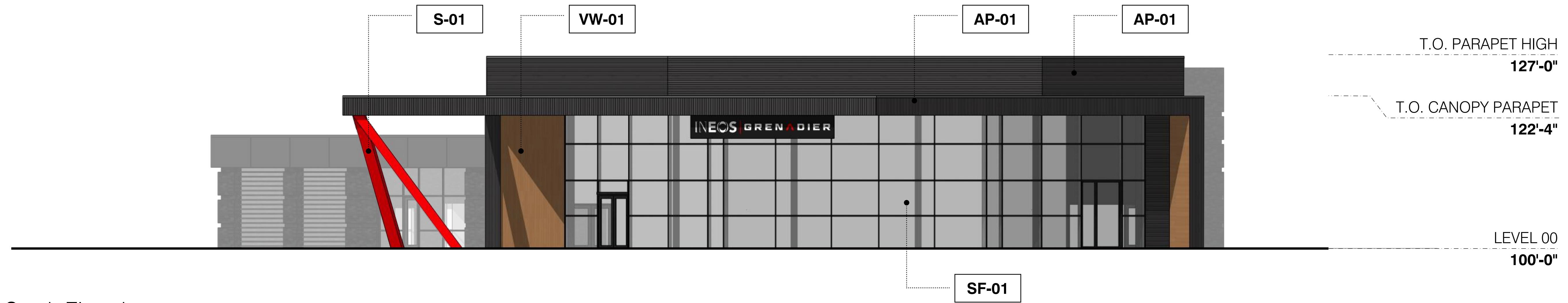
PROPOSED SIGNAGE
3/8" = 1'-0"

SIDE ELEVATION
3/8" = 1'-0"

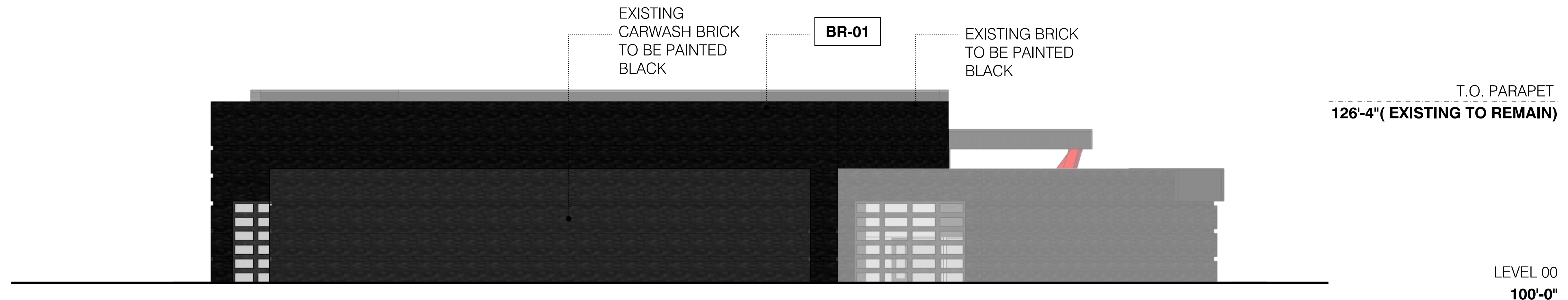




NOTE:
SCOPE IS ONLY THE FACADE OF SHOWROOM
AND FACADE OF RECEPTION. THE REST OF THE
BUILDING TO REMAIN

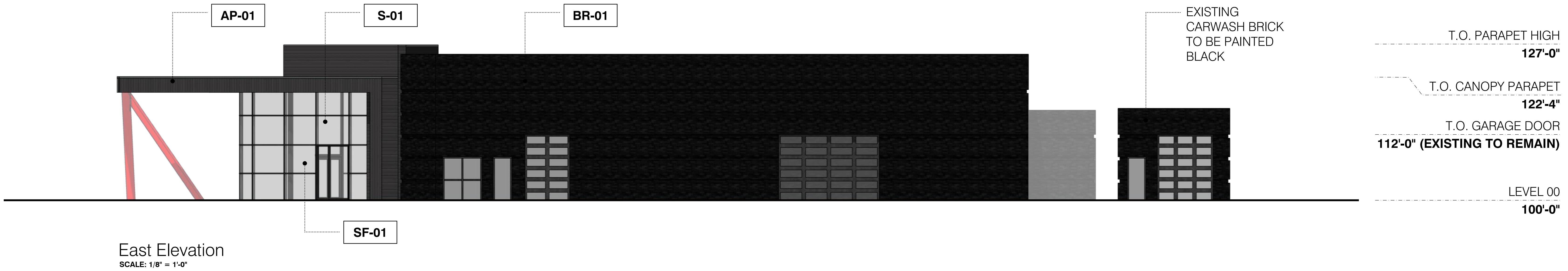


South Elevation
SCALE: 1/8" = 1'-0"



North Elevation
SCALE: 1/8" = 1'-0"

NOTE:
SCOPE IS ONLY THE FACADE OF SHOWROOM
AND FACADE OF RECEPTION. THE REST OF THE
BUILDING TO REMAIN

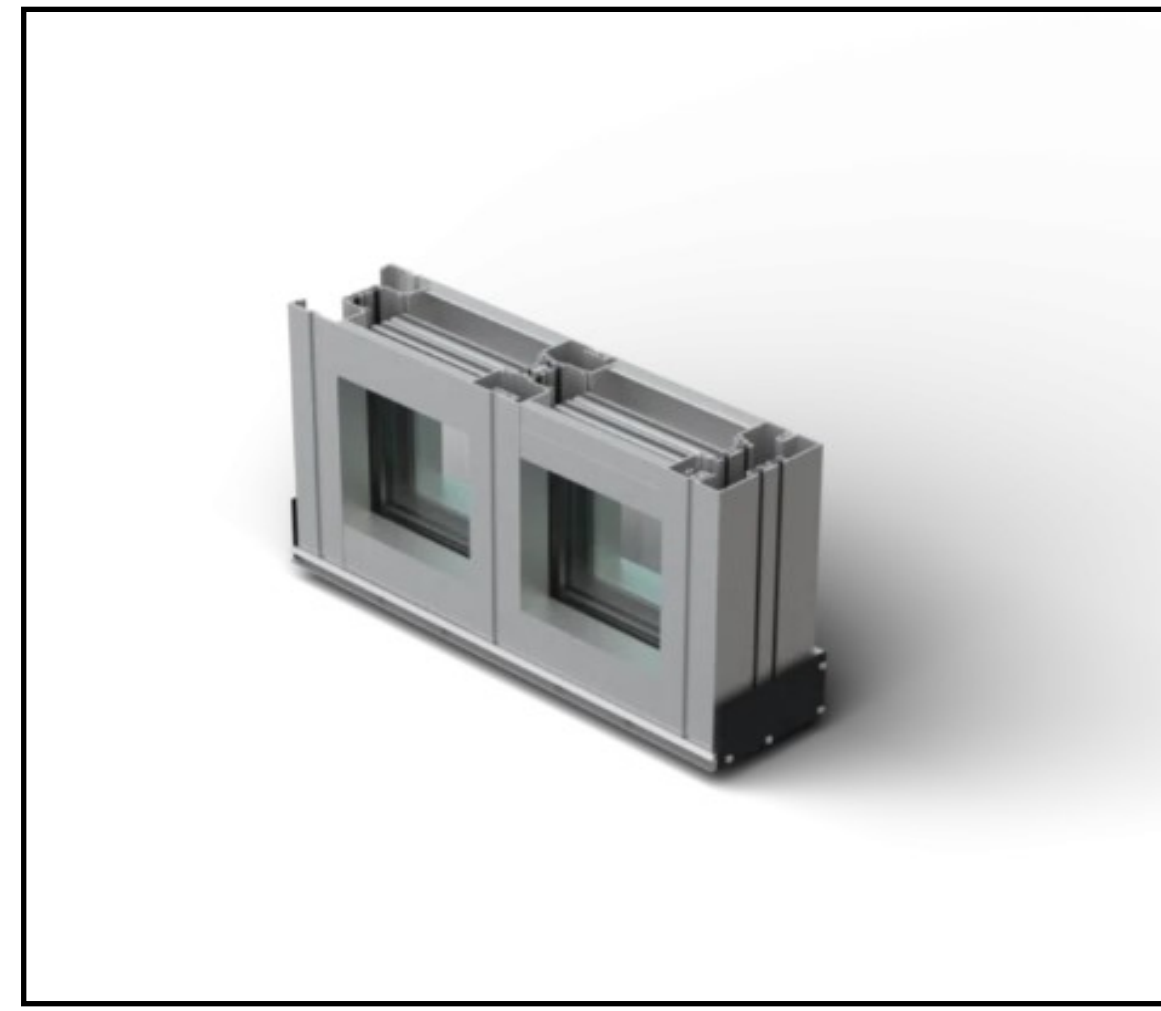




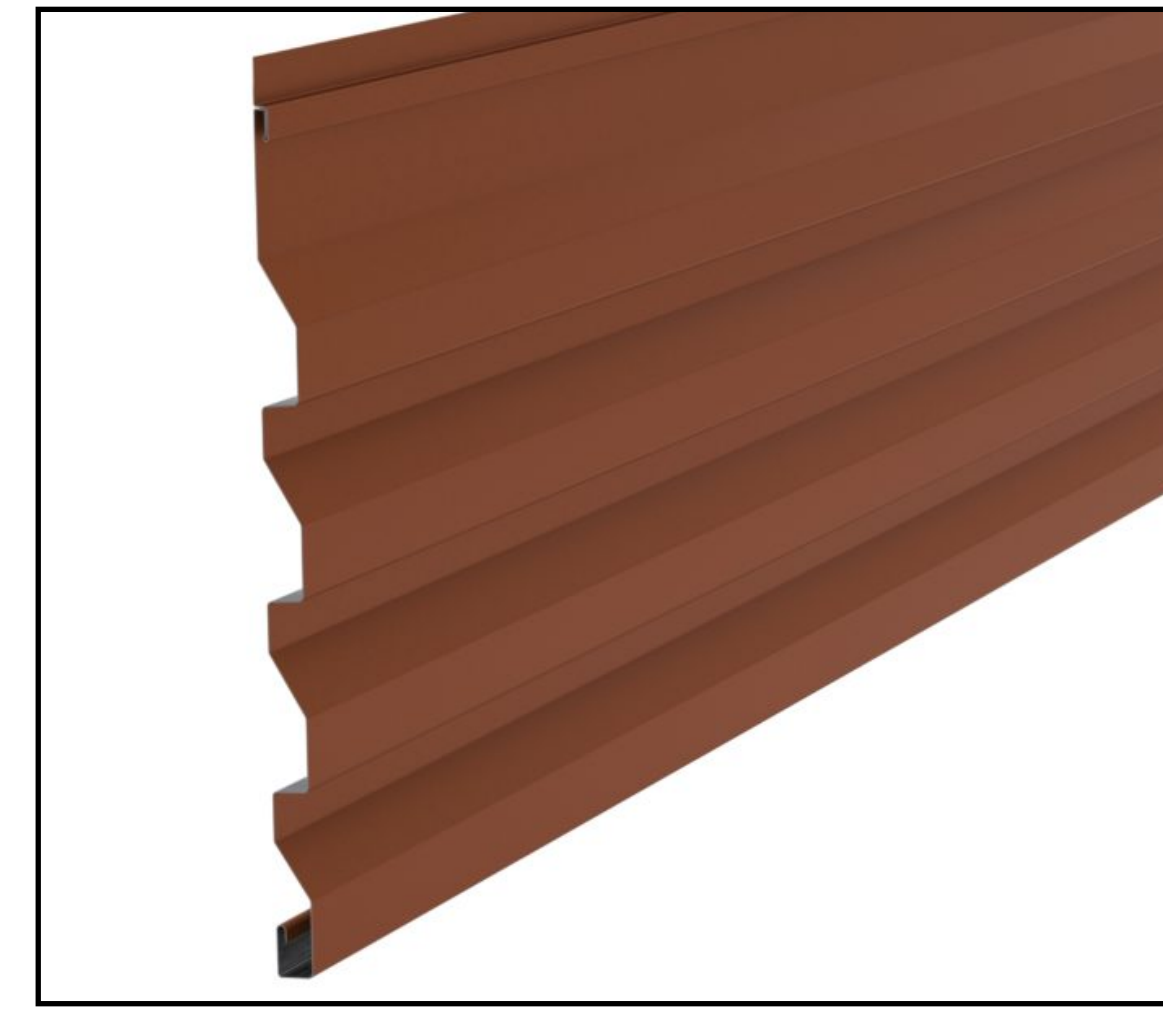
S-01
 Material: Painted Structural steel
 Manufacturer: TBD
 Color: Real Red (SW 6868)



BR 01
 Material: Existing Brick
 Manufacturer: Existing
 Color: Tricorn Black (SW 6258)

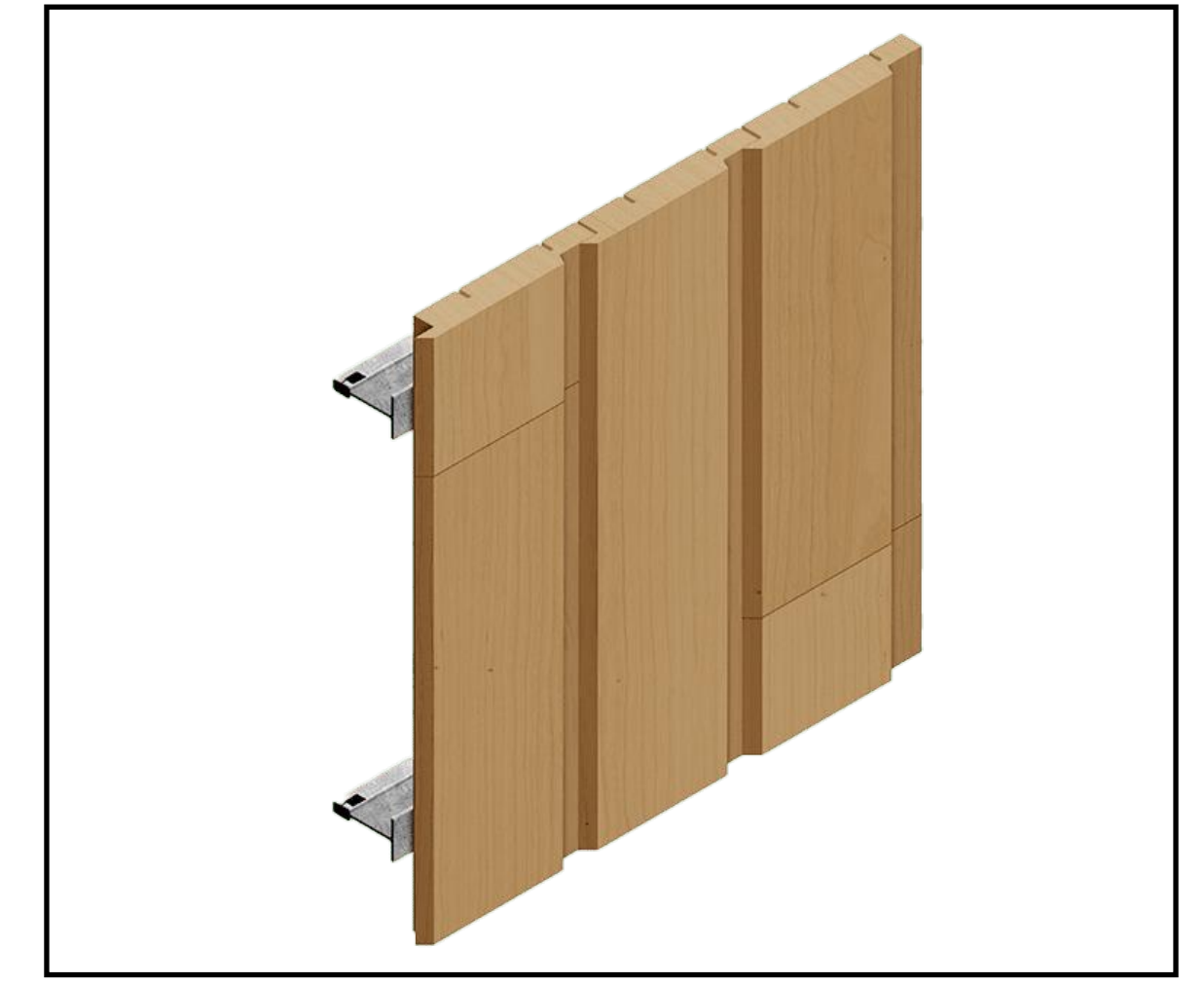


SF-01
 Material: Trifab Versaglaze 451T
 Manufacturer: Kawneer
 Color: Black Frame



AP 01
 Material: Horizontal Wall Panel
 Manufacturer: DMI
 Color: Matte Black
 Type: Horizontally mounted at Parapet High

 Vertically mounted at canopy Parapet low



VW-01
 Material: Vinyl Wood Paneling
 Manufacturer: Rulon
 Style: Linear Closed