

BENCHMARKS

HORIZONTAL (NAD 83) AND VERTICAL (NAVD 88) DATUMS ARE BASED UPON SOURCE CORRS STATION "COLB". THIS IS A CONTINUOUSLY OPERATING REFERENCE STATION LOCATED ON THE GROUNDS OF AN ODOT FACILITY LOCATED AT 1960 WEST BROAD STREET IN COLUMBUS, OHIO, PUBLISHED ELEVATION IS 722.39.

BENCHMARK #1
MAG NAIL IN HEADWALL
N 779801.71 ELEVATION = 944.38
E 1778903.71

BENCHMARK #2
BOX "X" CUT W/ MAG NAIL IN NE CORNER OF FLAG POLE BASE
N 778794.42 ELEVATION = 932.24
E 1779208.06

BENCHMARK #3
"X" CUT IN MH RIM
N 778745.81 ELEVATION = 930.96
E 1779439.67

BASIS OF BEARINGS

BEARINGS ARE BASED ON THE STATE PLANE COORDINATE SYSTEM, OHIO SOUTH ZONE (NAD83-2011), AS DETERMINED BY A GPS SURVEY UTILIZING CORRS STATION "OHUN". THE PROJECT COORDINATES ARE BASED ON STATE PLANE COORDINATES AND HAVE BEEN SCALED TO GROUND BY USING A PROJECT ADJUSTMENT FACTOR OF 1.0000176459 APPLIED AT BASE POINT N 778500.00 E 1779500.00 GRID AND GROUND COORDINATES ARE IDENTICAL AT THE BASE POINT.

SURVEY SOURCE:
THIS DRAWING IS BASED ON AN ACTUAL FIELD SURVEY PERFORMED BY THE KLEINGERS GROUP IN JULY, 2024.

RELATED PERMITS	
OEPA FACILITY PERMIT NUMBER (NOI)	4GC10252*AG

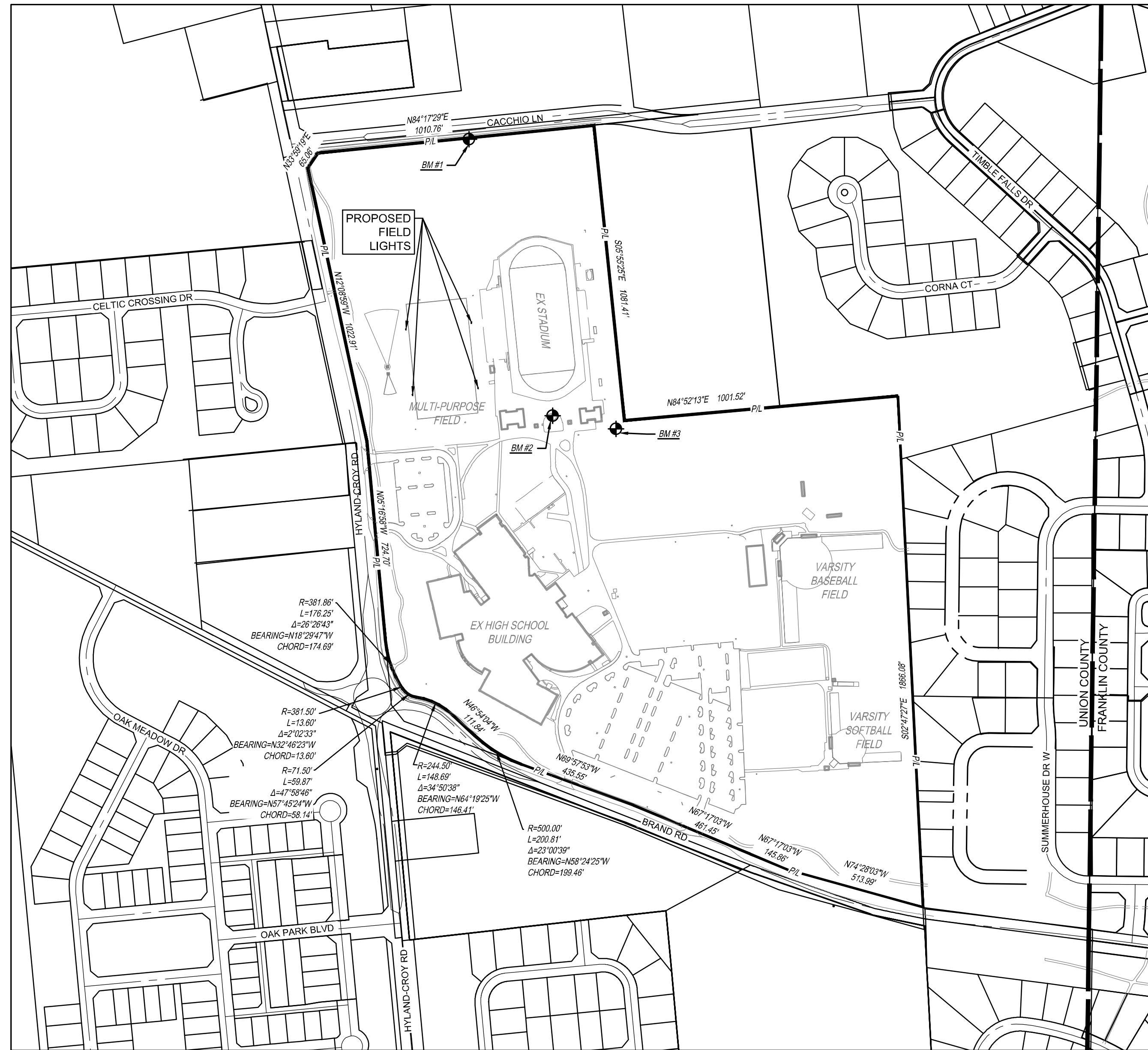
AMENDED FINAL DEVELOPMENT PLAN DUBLIN JEROME HIGH SCHOOL 8300 HYLAND-CROY RD CITY OF DUBLIN, UNION COUNTY, OHIO 43017

2025

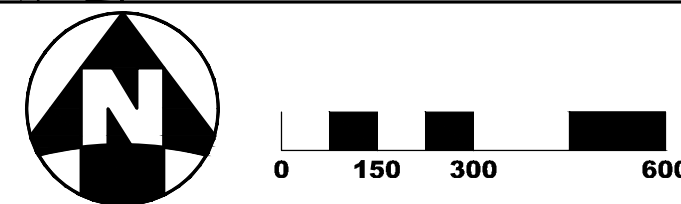
PID: 3900290011000

LEGEND

- CITY OF DUBLIN CORPORATION LIMITS
- JEROME TOWNSHIP



INDEX MAP
1"=300'



ENGINEER
THE KLEINGERS GROUP
350 WORTHINGTON ROAD, SUITE H
WESTERVILLE, OH 43082
PHONE: (614) 882-4311
FAX: (614) 882-4479
CONTACT: MIKE COUVREUR
EMAIL: MIKE.COUVREUR@KLEINGERS.COM

OWNER
DUBLIN CITY SCHOOLS
5175 EMERALD PARKWAY
DUBLIN, OH 43017
CONTACT: JEFF STARK, COO
PHONE: (614) 760-4323
EMAIL: STARK_JEFF@DUBLINSCHOOLS.NET

SITE DEVELOPMENT DATA

EXISTING USE: HIGH SCHOOL CAMPUS
PROPOSED USE: HIGH SCHOOL CAMPUS
ZONING DISTRICT: PUD

TOTAL SITE AREA: 87.58 ACRES

EXISTING IMPERVIOUS AREA: 23.53 ACRES
EXISTING OPEN SPACE AREA: 64.05 ACRES
EXISTING TOTAL SITE COVERAGE: 26.87 %

PROPOSED DISTURBED AREA: 5.66 ACRES
PROPOSED ADDITIONAL IMPERVIOUS AREA: 3.84 ACRES

POST IMPERVIOUS AREA: 27.37 ACRES
POST OPEN SPACE AREA: 60.21 ACRES
POST TOTAL SITE COVERAGE: 31.25 %

FLOOD ZONE DESIGNATION: ZONE X
MAP 39049C0018K, 06/17/2008

PROJECT DESCRIPTION

THIS PROJECT CONSISTS OF THE INSTALLATION OF FOUR (4) NEW 70' LIGHTS FOR THE MULTI-PURPOSE SYNTHETIC TURF FIELD AT DUBLIN JEROME HIGH SCHOOL.



CIVIL ENGINEERING | www.kleingers.com
SURVEYING | 350 Worthington Rd
LANDSCAPE ARCHITECTURE | Suite H
Westerville, OH 43082
614.882.4311

SEAL:

NO.	DATE	DESCRIPTION

DUBLIN JEROME HIGH SCHOOL TURF FIELD LIGHTS
8300 HYLAND-CROY ROAD
CITY OF DUBLIN
DUBLIN, OH 43016

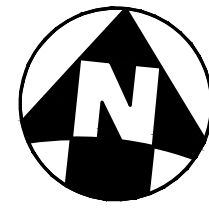
PROJECT NO: 240173.002
DATE: 12/16/2024

SCALE: AS SHOWN

SHEET NAME: ZONING TITLE SHEET

SHEET NO: C201





THE KLEINGERS GROUP
 CIVIL ENGINEERING SURVEYING LANDSCAPE ARCHITECTURE
 www.kleingers.com
 350 Worthington Rd
 Suite H
 Westerville, OH 43082
 614.882.4311

SEAL:

NO. DATE DESCRIPTION

DUBLIN JEROME HIGH SCHOOL TURF FIELD LIGHTS
 8300 HYLAND-CROY ROAD
 CITY OF DUBLIN
 DUBLIN, OH 43016

PROJECT NO: 240173.002

DATE: 12/16/2024

SCALE:

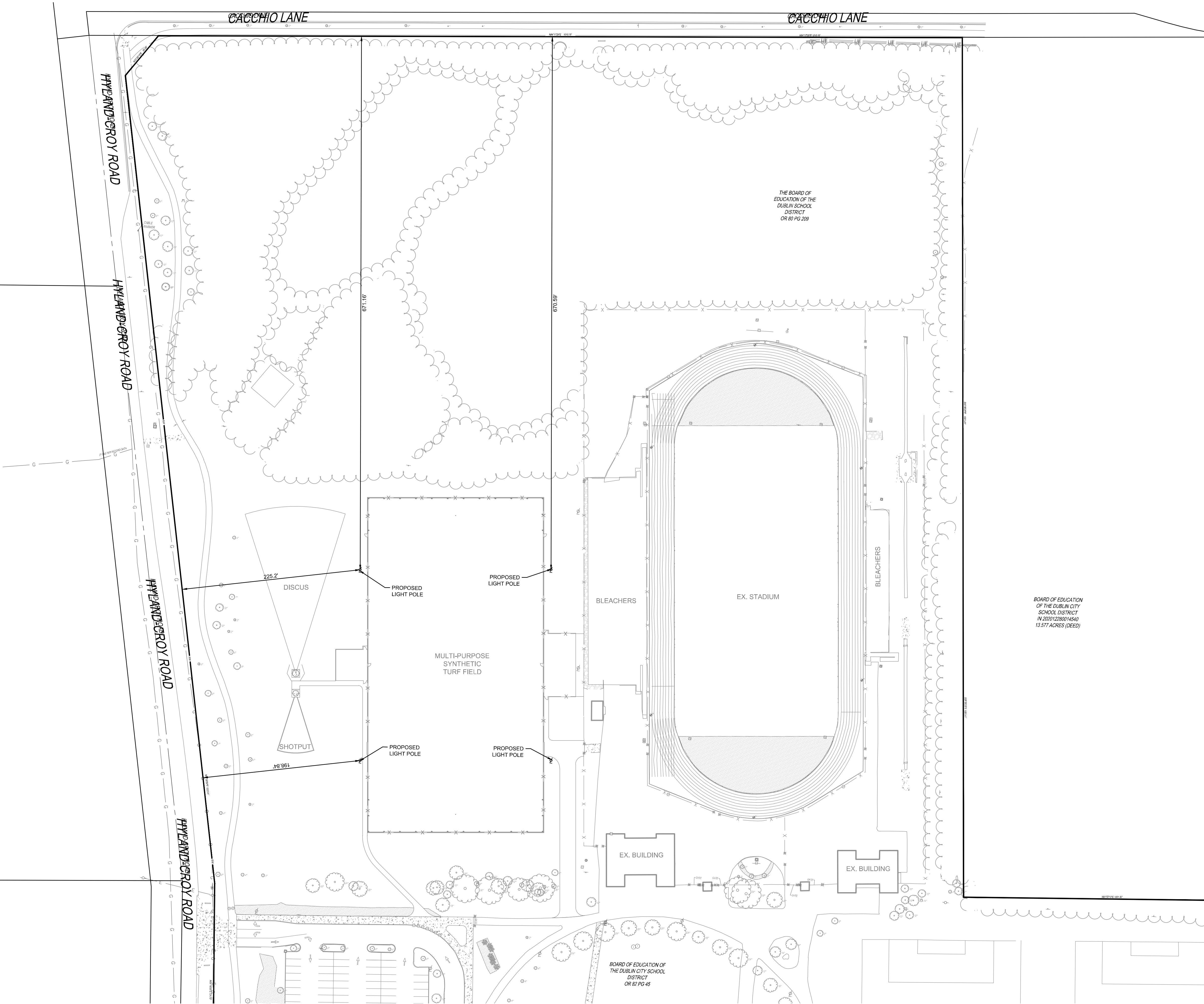


SHEET NAME:

SITE PLAN

SHEET NO.

C202



Dublin Jerome High School Turf

Dublin, OH

Lighting System

Pole/Fixture Summary						
Pole ID	Pole Height	Mtg Height	Fixture Qty	Luminaire Type	Load	Circuit
F1-F4	70'	70'	6	TLC-LED-1500	8.46 kW	A
		16'	2	TLC-BT-575	1.15 kW	A
4			32		38.44 kW	

Circuit Summary			
Circuit	Description	Load	Fixture Qty
A	Football	38.44 kW	32

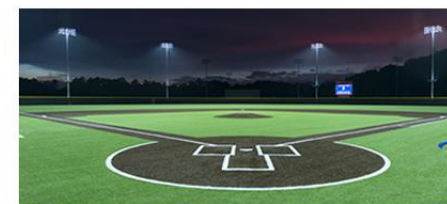
Fixture Type Summary							
Type	Source	Wattage	Lumens	L90	L80	L70	Quantity
TLC-BT-575	LED 5700K - 75 CRI	575W	52,000	>120,000	>120,000	>120,000	8
TLC-LED-1500	LED 5700K - 75 CRI	1410W	181,000	>120,000	>120,000	>120,000	24

Single Luminaire Amperage Draw Chart							
Driver Specifications (.90 min power factor)	Line Amperage Per Luminaire (max draw)						
	208 (60)	220 (60)	240 (60)	277 (60)	347 (60)	380 (60)	480 (60)
Single Phase Voltage							
TLC-BT-575	3.3	3.2	2.9	2.5	2.0	1.8	1.5
TLC-LED-1500	8.4	7.9	7.3	6.3	5.0	4.6	3.6

Light Level Summary

Calculation Grid Summary								
Grid Name	Calculation Metric	Illumination Ave					Circuits	Fixture Qty
		Ave	Min	Max	Max/Min	Ave/Min		
Blanket	Horizontal	11.38	0	62	-	-	A	32
Football	Horizontal Illuminance	50.27	38	60	1.57	1.31	A	32
Property Line Spill @ 3ft.	Horizontal Illuminance	0.0000	0.00	0.00	-	-	A	32
Property Line Spill @ 5ft.	Max Candela Metric	4.3654	0.00	30.28	-	-	A	32
Property Line Spill @ 5ft.	Max Vertical Illuminance Metric	0.0000	0.00	0.00	-	-	A	32
Property Line Spill @ 5ft.	True Max Vert Illuminance Metric	0.0000	0.00	0.00	-	-	A	32

From Hometown to Professional



L1.0

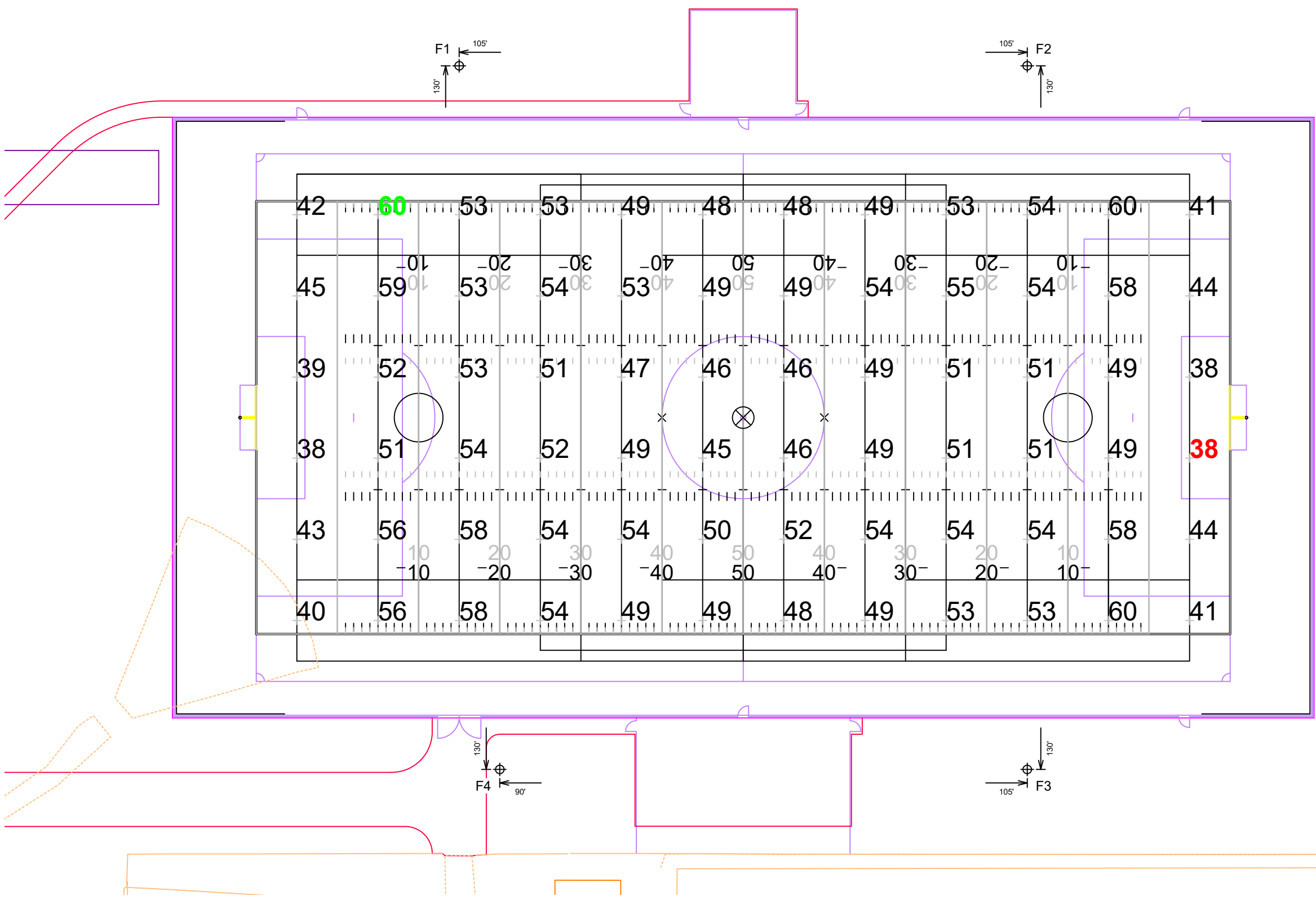


We Make It Happen.

Not to be reproduced in whole or part without the written consent of Musco Sports Lighting, LLC. ©1981, 2023 Musco Sports Lighting, LLC.

Equipment List For Areas Shown				Luminaires				
Pole								
QTY	LOCATION	SIZE	GRADE ELEVATION	ABOVE GRADE LEVEL	LUMINAIRE TYPE	QTY/POLE	THIS GRID	OTHER GRIDS
4	F1-F4	70'	-	70'	TLC-LED-1500	6	6	0
				15.5'	TLC-BT-575	2	2	0
4				Totals		32	32	0

*Above Grade level relative to the field



Dublin Jerome High School Turf

Dublin, OH

Grid Summary	
Name	Football
Size	360' x 160'
Spacing	30.0'
Height	3.0' above grade

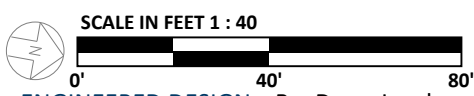
Illumination Summary	
MAINTAINED HORIZONTAL FOOTCANDLES	
Guaranteed Average	Entire Grid 50
Scan Average	50.27
Maximum	60
Minimum	38
Avg/Min	1.31
Guaranteed Max/Min	2
Max/Min	1.57
UG (adjacent pts)	1.46
CU	0.67
No. of Points	72
LUMINAIRE INFORMATION	
Applied Circuits	A
No. of Luminaires	32
Total Load	38.44 kW

Guaranteed Performance: The ILLUMINATION described above is guaranteed per your Musco Warranty document and includes a 0.95 dirt depreciation factor.

Field Measurements: Individual field measurements may vary from computer-calculated predictions and should be taken in accordance with IESNA RP-6-15.

Electrical System Requirements: Refer to Amperage Draw Chart and/or the "Musco Control System Summary" for electrical sizing.

Installation Requirements: Results assume ± 3% nominal voltage at line side of the driver and structures located within 3 feet (1m) of design locations.



ENGINEERED DESIGN By: Drew Jacobson • File #239555B • 11-Nov-24

Pole location(s) ⊕ dimensions are relative to 0,0 reference point(s) ⊗

L1.1



We Make It Happen.

Not to be reproduced in whole or part without the written consent of Musco Sports Lighting, LLC. ©1981, 2023 Musco Sports Lighting, LLC.

ILLUMINATION SUMMARY

Equipment List For Areas Shown								
Pole				Luminaires				
QTY	LOCATION	SIZE	GRADE ELEVATION	ABOVE GRADE LEVEL	LUMINAIRE TYPE	QTY/POLE	THIS GRID	OTHER GRIDS
4	F1-F4	70'	-	70'	TLC-LED-1500	6	6	0
				15.5'	TLC-BT-575	2	2	0
4				Totals		32	32	0

*Above Grade level relative to the field

Dublin Jerome High School Turf

Dublin, OH

Grid Summary	
Name	Blanket
Spacing	10.0'
Height	3.0' above grade

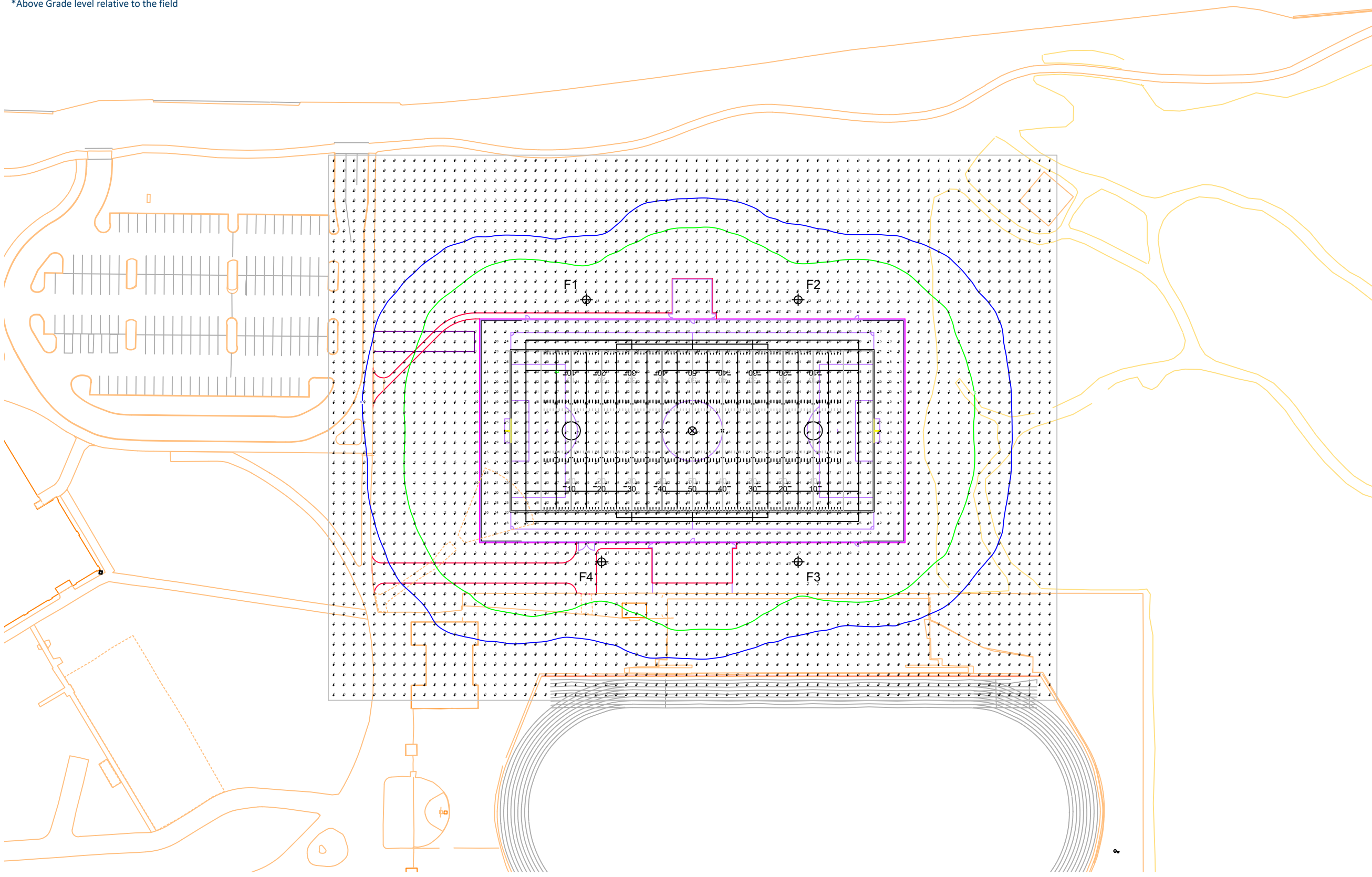
Illumination Summary	
MAINTAINED HORIZONTAL FOOTCANDLES	
Entire Grid	
Scan Average	11.38
Maximum	62
Minimum	0
Avg/Min	-
Max/Min	-
UG (adjacent pts)	25.10
CU	0.91
No. of Points	3888
LUMINAIRE INFORMATION	
Applied Circuits	A
No. of Luminaires	32
Total Load	38.44 kW

Guaranteed Performance: The ILLUMINATION described above is guaranteed per your Musco Warranty document and includes a 0.95 dirt depreciation factor.

Field Measurements: Individual field measurements may vary from computer-calculated predictions and should be taken in accordance with IESNA RP-6-15.

Electrical System Requirements: Refer to Amperage Draw Chart and/or the "Musco Control System Summary" for electrical sizing.

Installation Requirements: Results assume ± 3% nominal voltage at line side of the driver and structures located within 3 feet (1m) of design locations.



SCALE IN FEET 1 : 100

ENGINEERED DESIGN By: Drew Jacobson • File #239555B • 11-Nov-24

Pole location(s) ⊕ dimensions are relative to 0,0 reference point(s) ⊗

L1.2



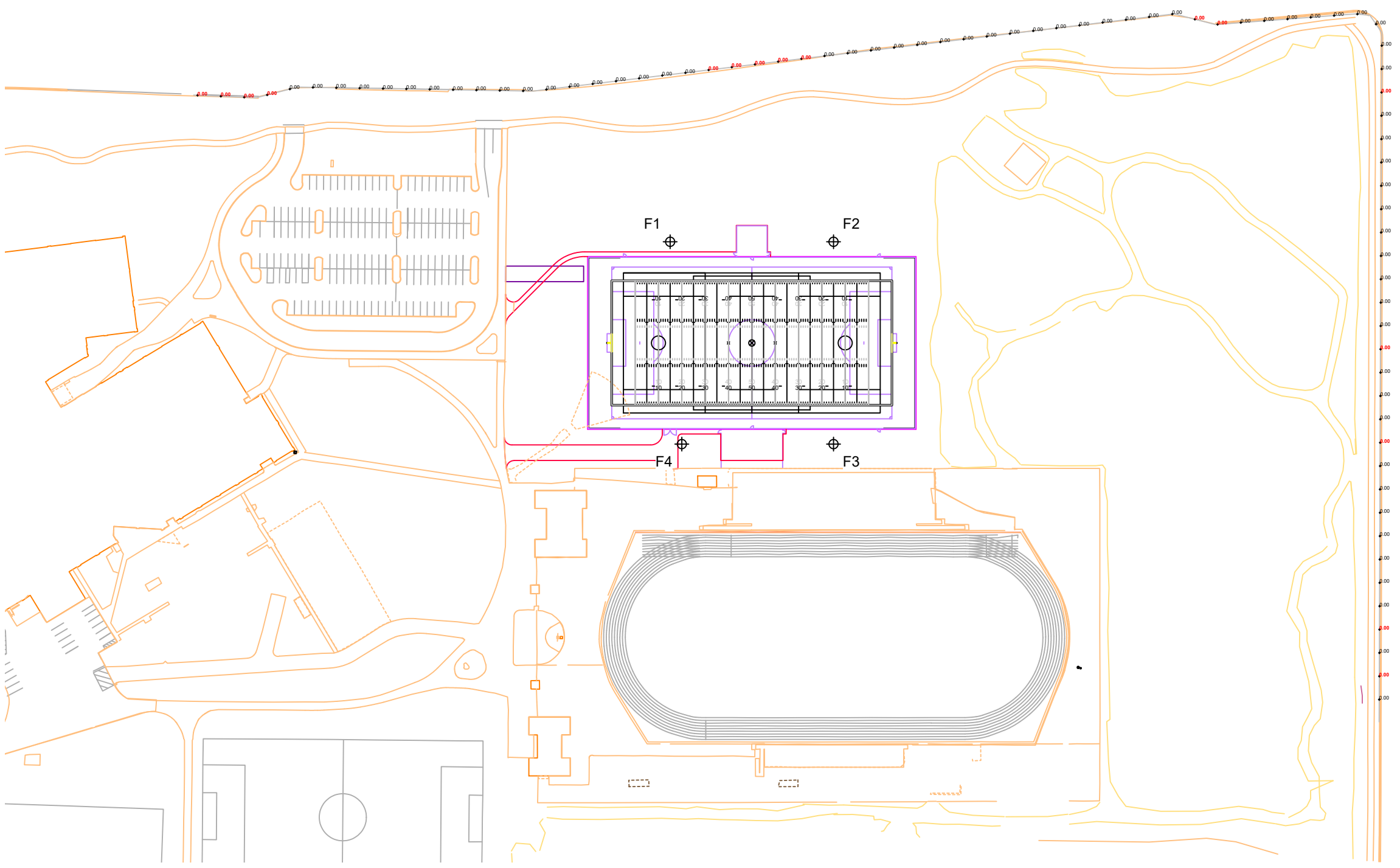
We Make It Happen.

Not to be reproduced in whole or part without the written consent of Musco Sports Lighting, LLC. ©1981, 2023 Musco Sports Lighting, LLC.

ILLUMINATION SUMMARY

Equipment List For Areas Shown								
Pole				Luminaires				
QTY	LOCATION	SIZE	GRADE ELEVATION	ABOVE GRADE LEVEL	LUMINAIRE TYPE	QTY/POLE	THIS GRID	OTHER GRIDS
4	F1-F4	70'	-	70'	TLC-LED-1500	6	6	0
				15.5'	TLC-BT-575	2	2	0
4				Totals		32	32	0

*Above Grade level relative to the field



SCALE IN FEET 1 : 150
 0' 150' 300'
 ENGINEERED DESIGN By: Drew Jacobson • File #239555B • 11-Nov-24

Pole location(s) ⊕ dimensions are relative to 0,0 reference point(s) ⊗

Dublin Jerome High School Turf

Dublin, OH

Grid Summary	
Name	Property Line Spill @ 3ft.
Spacing	30.0'
Height	3.0' above grade

Illumination Summary	
INITIAL HORIZONTAL FOOTCANDLES	
Entire Grid	
Scan Average	0.0000
Maximum	0.00
Minimum	0.00
CU	0.00
No. of Points	81
LUMINAIRE INFORMATION	
Applied Circuits	A
No. of Luminaires	32
Total Load	38.44 kW

Guaranteed Performance: The ILLUMINATION described above is guaranteed per your Musco Warranty document.

Field Measurements: Individual field measurements may vary from computer-calculated predictions and should be taken in accordance with IESNA RP-6-15.

Electrical System Requirements: Refer to Amperage Draw Chart and/or the "Musco Control System Summary" for electrical sizing.

Installation Requirements: Results assume ± 3% nominal voltage at line side of the driver and structures located within 3 feet (1m) of design locations.

L1.3



We Make It Happen.

Not to be reproduced in whole or part without the written consent of Musco Sports Lighting, LLC. ©1981, 2023 Musco Sports Lighting, LLC.

ILLUMINATION SUMMARY

Equipment List For Areas Shown								
Pole				Luminaires				
QTY	LOCATION	SIZE	GRADE ELEVATION	ABOVE GRADE LEVEL	LUMINAIRE TYPE	QTY/POLE	THIS GRID	OTHER GRIDS
4	F1-F4	70'	-	70'	TLC-LED-1500	6	6	0
				15.5'	TLC-BT-575	2	2	0
4				Totals		32	32	0

*Above Grade level relative to the field

Dublin Jerome High School Turf

Dublin, OH

Grid Summary	
Name	Property Line Spill @ 5ft.
Spacing	30.0'
Height	5.0' above grade

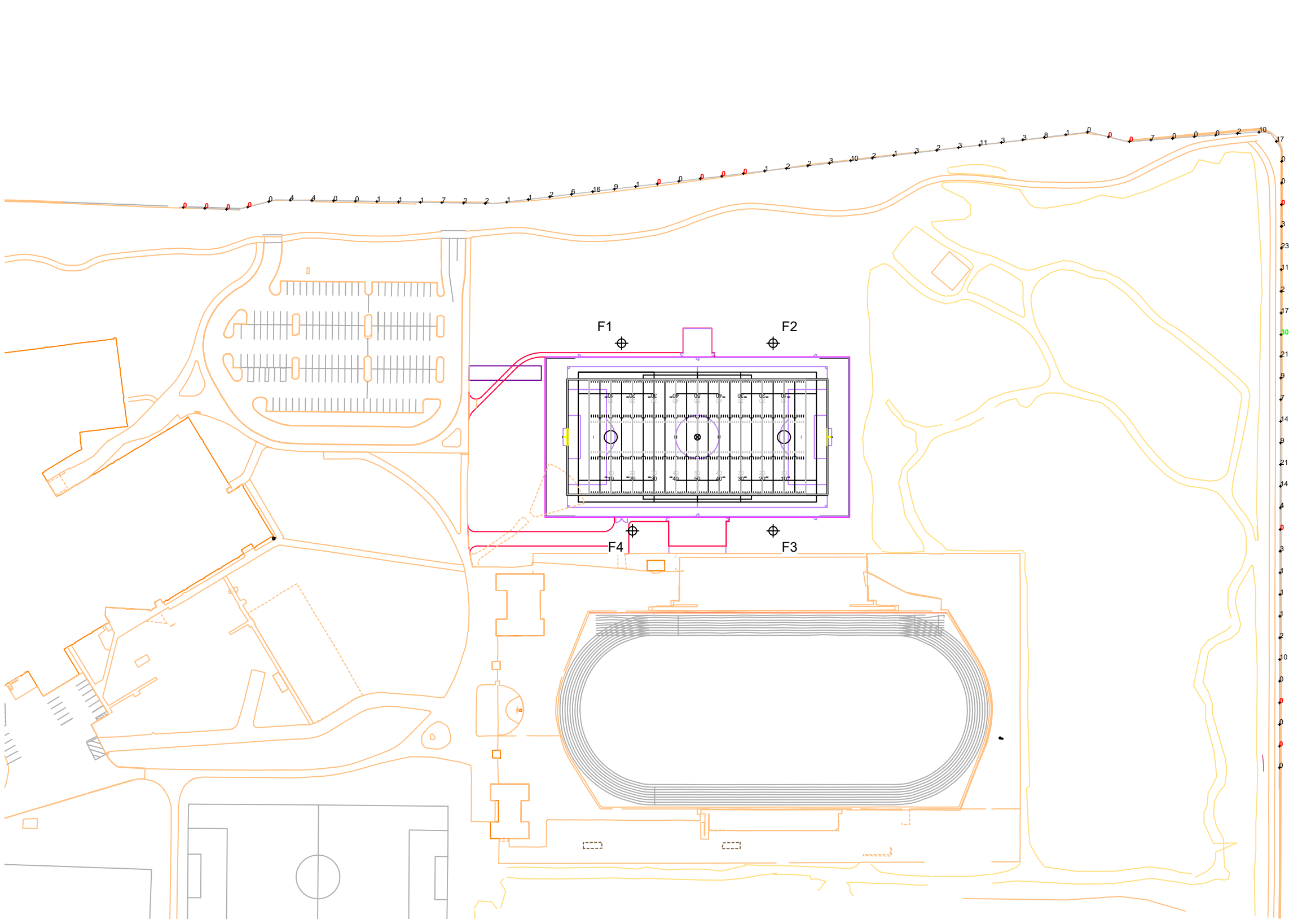
Illumination Summary		INITIAL CANDELA (PER FIXTURE)
		Entire Grid
Scan Average	4.3654	
Maximum	30.28	
Minimum	0.00	
CU	0.00	
No. of Points	81	
LUMINAIRE INFORMATION		
Applied Circuits	A	
No. of Luminaires	32	
Total Load	38.44 kW	

Guaranteed Performance: The ILLUMINATION described above is guaranteed per your Musco Warranty document.

Field Measurements: Individual field measurements may vary from computer-calculated predictions and should be taken in accordance with IESNA RP-6-15.

Electrical System Requirements: Refer to Amperage Draw Chart and/or the "Musco Control System Summary" for electrical sizing.

Installation Requirements: Results assume ± 3% nominal voltage at line side of the driver and structures located within 3 feet (1m) of design locations.



SCALE IN FEET 1 : 150
 0' 150' 300'
 ENGINEERED DESIGN By: Drew Jacobson • File #239555B • 11-Nov-24

Pole location(s) ⊕ dimensions are relative to 0,0 reference point(s) ⊗

L1.4



We Make It Happen.

Not to be reproduced in whole or part without the written consent of Musco Sports Lighting, LLC. ©1981, 2023 Musco Sports Lighting, LLC.

ILLUMINATION SUMMARY

Equipment List For Areas Shown								
Pole				Luminaires				
QTY	LOCATION	SIZE	GRADE ELEVATION	ABOVE GRADE LEVEL	LUMINAIRE TYPE	QTY/POLE	THIS GRID	OTHER GRIDS
4	F1-F4	70'	-	70'	TLC-LED-1500	6	6	0
				15.5'	TLC-BT-575	2	2	0
4				Totals		32	32	0

*Above Grade level relative to the field

Dublin Jerome High School Turf

Dublin, OH

Grid Summary	
Name	Property Line Spill @ 5ft.
Spacing	30.0'
Height	5.0' above grade

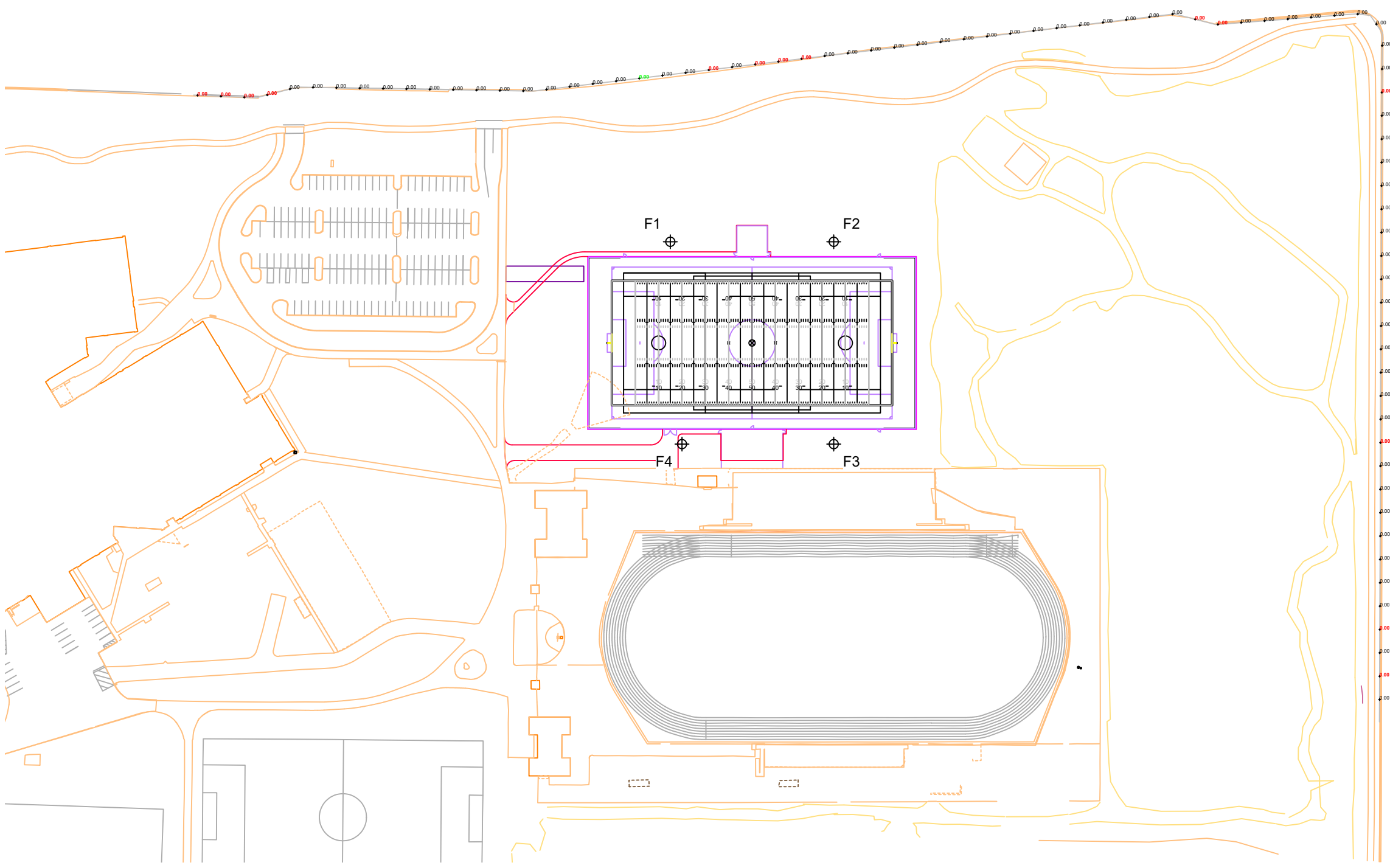
Illumination Summary		INITIAL MAX VERTICAL FOOTCANDLES
		Entire Grid
Scan Average	0.0000	
Maximum	0.00	
Minimum	0.00	
CU	0.00	
No. of Points	81	
LUMINAIRE INFORMATION		
Applied Circuits	A	
No. of Luminaires	32	
Total Load	38.44 kW	

Guaranteed Performance: The ILLUMINATION described above is guaranteed per your Musco Warranty document.

Field Measurements: Individual field measurements may vary from computer-calculated predictions and should be taken in accordance with IESNA RP-6-15.

Electrical System Requirements: Refer to Amperage Draw Chart and/or the "Musco Control System Summary" for electrical sizing.

Installation Requirements: Results assume ± 3% nominal voltage at line side of the driver and structures located within 3 feet (1m) of design locations.



SCALE IN FEET 1 : 150
 0' 150' 300'
 ENGINEERED DESIGN By: Drew Jacobson • File #239555B • 11-Nov-24

Pole location(s) ⊕ dimensions are relative to 0,0 reference point(s) ⊗



Not to be reproduced in whole or part without the written consent of Musco Sports Lighting, LLC. ©1981, 2023 Musco Sports Lighting, LLC.

ILLUMINATION SUMMARY

Dublin Jerome High School Turf

Dublin, OH

Equipment Layout

INCLUDES:
· Football

Electrical System Requirements: Refer to Amperage Draw Chart and/or the "Musco Control System Summary" for electrical sizing.

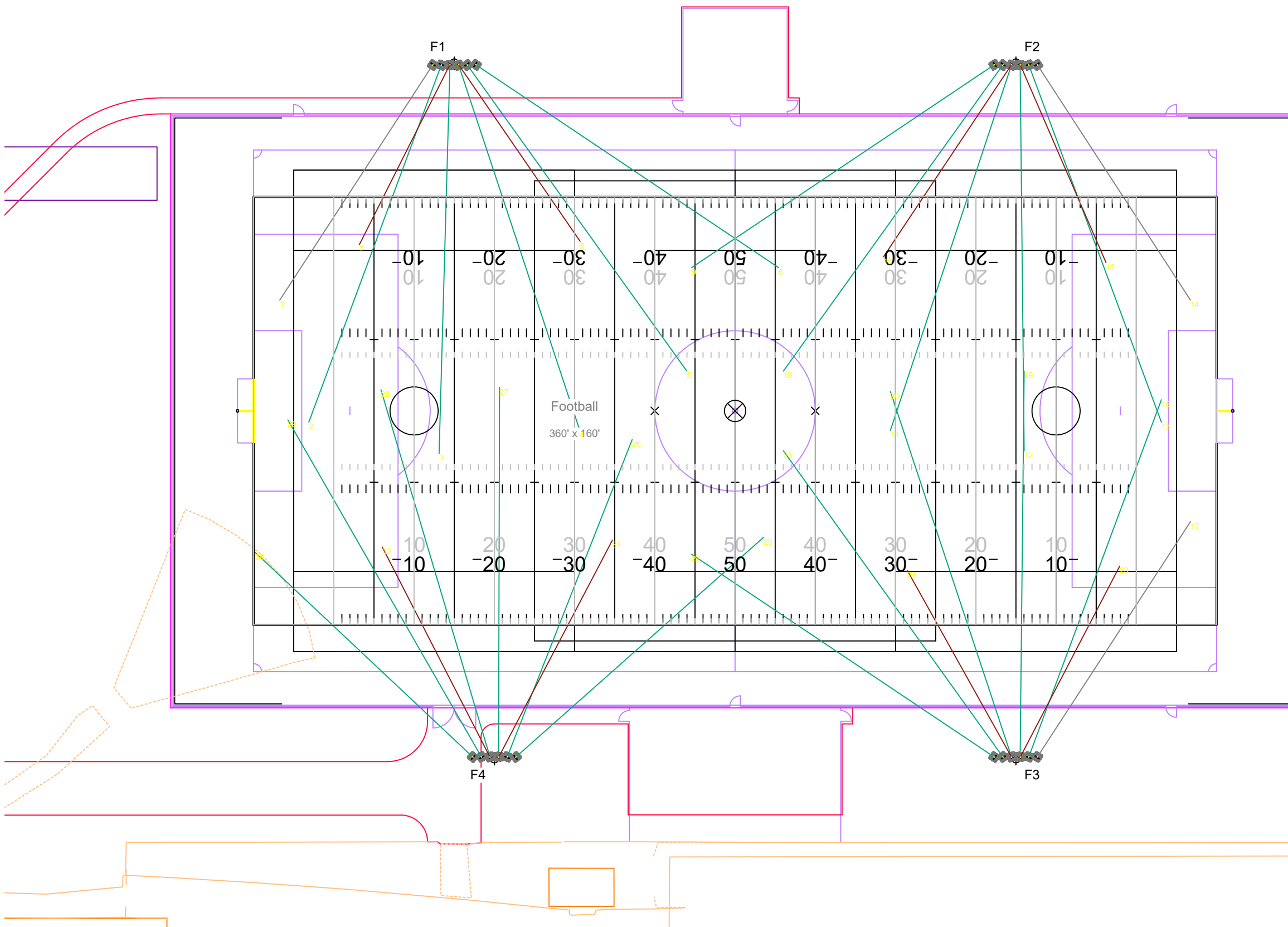
Installation Requirements: Results assume ± 3% nominal voltage at line side of the driver and structures located within 3 feet (1m) of design locations.

Equipment List For Areas Shown

QTY	LOCATION	SIZE	GRADE ELEVATION	ABOVE GRADE LEVEL	Luminaires	
					LUMINAIRE TYPE	QTY/POLE
4	F1-F4	70'	-	70' 15.5'	TLC-LED-1500	6
					TLC-BT-575	2
4	Totals					32

Single Luminaire Amperage Draw Chart

Driver Specifications (.90 min power factor)	Line Amperage Per Luminaire (max draw)						
	208 (60)	220 (60)	240 (60)	277 (60)	347 (60)	380 (60)	480 (60)
Single Phase Voltage	3.3	3.2	2.9	2.5	2.0	1.8	1.5
TLC-BT-575	3.3	3.2	2.9	2.5	2.0	1.8	1.5
TLC-LED-1500	8.4	7.9	7.3	6.3	5.0	4.6	3.6



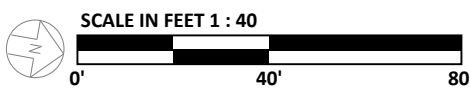
L1.6



We Make It Happen.

Not to be reproduced in whole or part without the written consent of Musco Sports Lighting, LLC. ©1981, 2023 Musco Sports Lighting, LLC.

EQUIPMENT LAYOUT



ENGINEERED DESIGN By: Drew Jacobson • File #239555B • 11-Nov-24

Pole location(s) ⊕ dimensions are relative to 0,0 reference point(s) ⊗