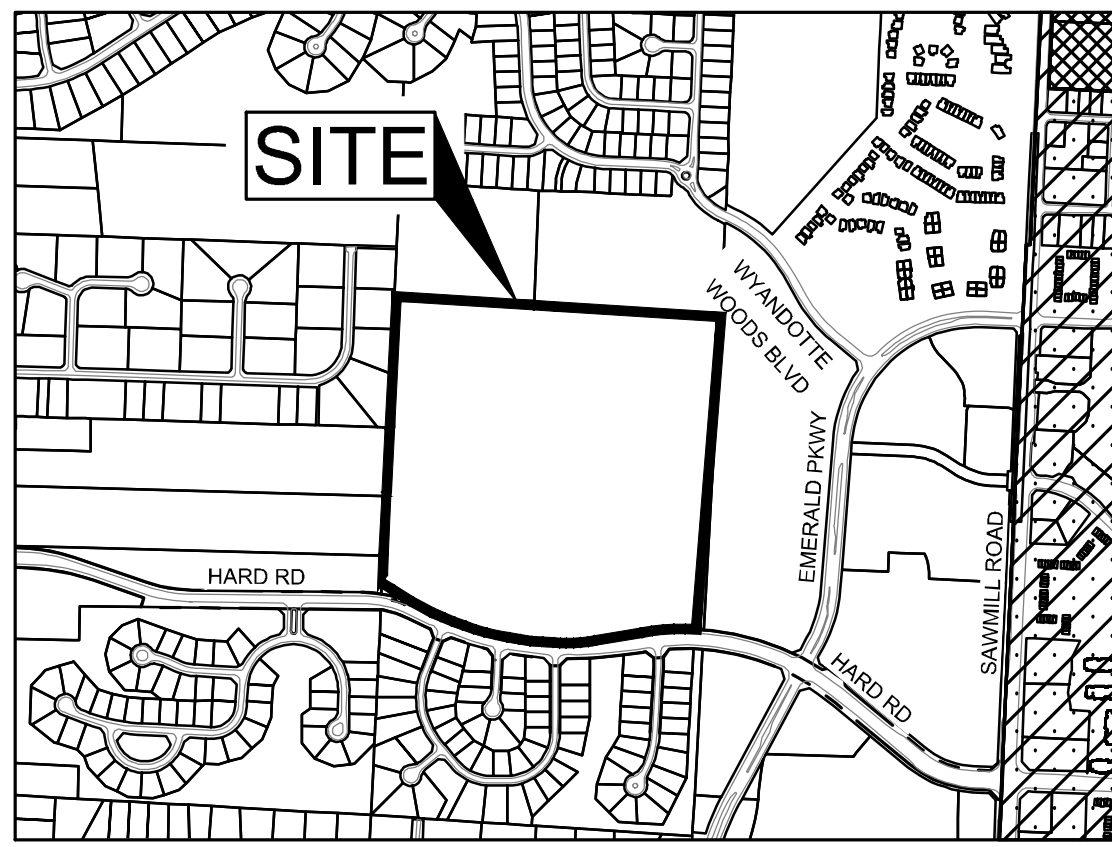


# AMENDED FINAL DEVELOPMENT PLAN FOR DUBLIN SCIOTO HIGH SCHOOL

## 4000 HARD ROAD CITY OF DUBLIN, FRANKLIN COUNTY, OHIO 43016

### 2025 PID: 273-009140



**BENCHMARKS**

HORIZONTAL (NAD 83) AND VERTICAL (NAVD 88) DATUMS ARE BASED UPON SOURCE CORRS STATION "COLB". THIS IS A CONTINUOUSLY OPERATING REFERENCE STATION LOCATED ON THE GROUNDS OF AN ODOT FACILITY LOCATED AT 1960 WEST BROAD STREET IN COLUMBUS, OHIO. PUBLISHED ELEVATION IS 722.39.

**BENCHMARK #1**  
PONY SPIKE IN TREE  
N 774438.76  
E 1800559.85  
ELEVATION = 917.38

**BENCHMARK #2**  
CUT "X" ON TOWER BOLT  
N 773897.60  
E 1801588.54  
ELEVATION = 905.03

**BENCHMARK #3**  
CUT "X" ON HYDRANT FLANGE BOLT  
N 772652.47  
E 1801690.64  
ELEVATION = 895.41

**BASIS OF BEARINGS**

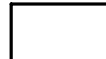
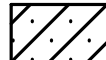

BEARINGS ARE BASED ON THE STATE PLANE COORDINATE SYSTEM, OHIO SOUTH ZONE (NAD83-2011), AS DETERMINED BY A GPS SURVEY UTILIZING CORRS STATION "COLB". THE PROJECT COORDINATES ARE BASED ON STATE PLANE COORDINATES AND HAVE BEEN SCALED TO GROUND BY USING A PROJECT ADJUSTMENT FACTOR OF 1.0000383426 APPLIED AT BASE POINT N 732,000.00 E 1,856,000.00 GRID AND GROUND COORDINATES ARE IDENTICAL AT THE BASE POINT.

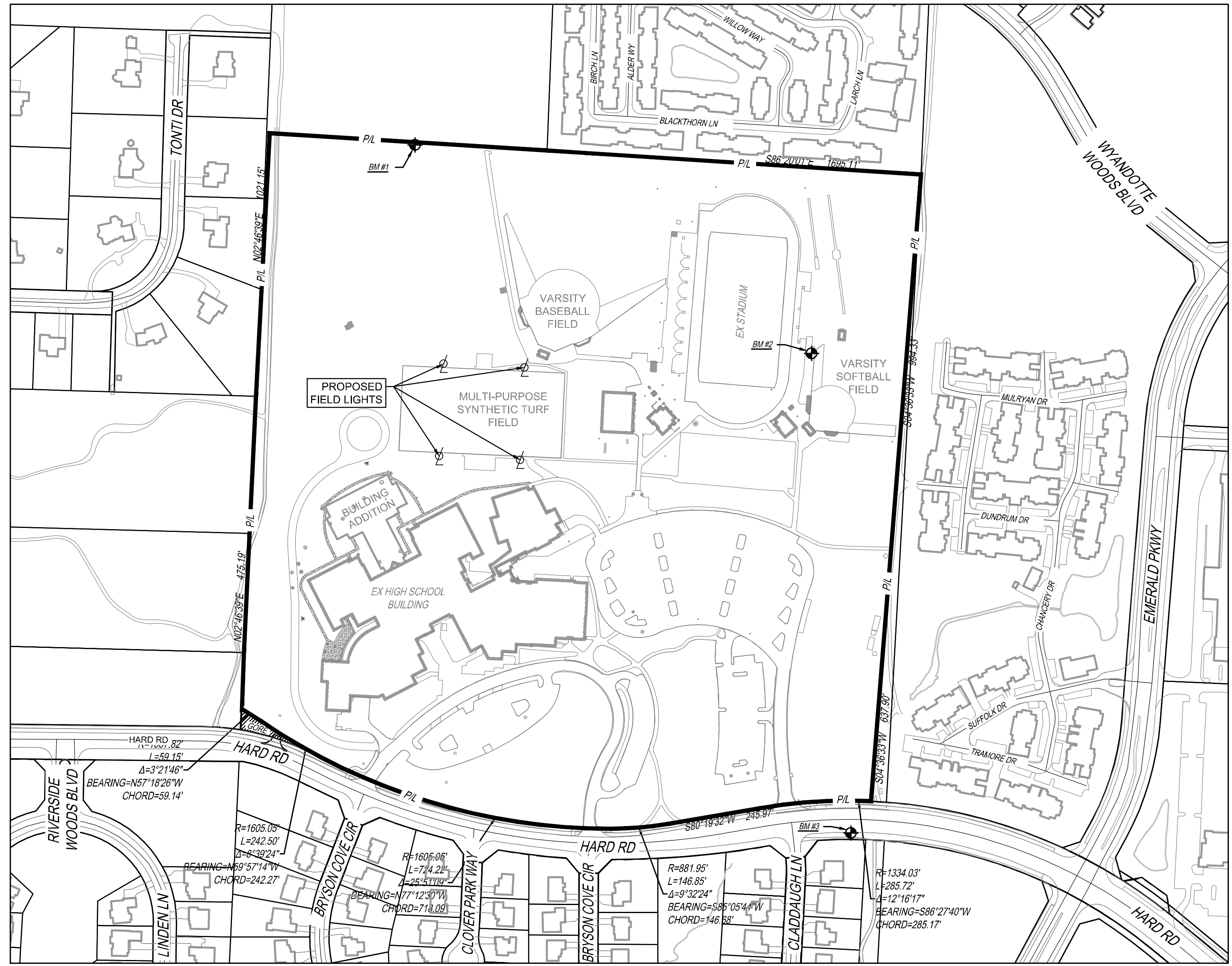
**SURVEY SOURCE:**  
THIS DRAWING IS BASED ON AN ACTUAL FIELD SURVEY PERFORMED BY THE KLEINGERS GROUP IN MARCH, 2024.

**RELATED PERMITS**

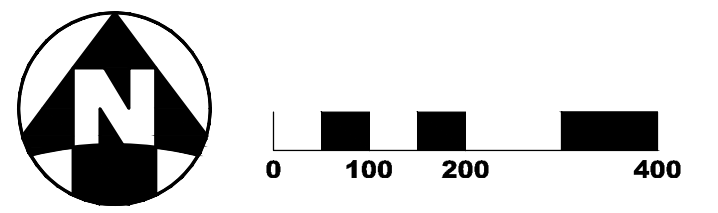
OEPA FACILITY PERMIT NUMBER (NOI) 4GC10251\*AG

**LEGEND**

-  CITY OF DUBLIN CORPORATION LIMITS
-  CITY OF COLUMBUS CORPORATION LIMITS
-  PERRY TOWNSHIP



**INDEX MAP**  
1"=200'



**ENGINEER**  
THE KLEINGERS GROUP  
350 WORTHINGTON ROAD, SUITE H  
WESTERVILLE, OH 43082  
PHONE: (614) 882-4311  
FAX: (614) 882-4479  
CONTACT: MIKE COUVREUR  
EMAIL: MIKE.COUVREUR@KLEINGERS.COM

**OWNER**  
DUBLIN CITY SCHOOLS  
5175 EMERALD PARKWAY  
DUBLIN, OH 43017  
CONTACT: JEFF STARK, COO  
PHONE: (614) 760-4323  
EMAIL: STARK\_JEFF@DUBLINSCHOOLS.NET

**SITE DEVELOPMENT DATA**

EXISTING USE: HIGH SCHOOL CAMPUS  
PROPOSED USE: HIGH SCHOOL CAMPUS  
ZONING DISTRICT: PUD

TOTAL SITE AREA: 54.30 ACRES

EXISTING IMPERVIOUS AREA: 25.43 ACRES  
EXISTING OPEN SPACE AREA: 28.87 ACRES  
EXISTING TOTAL SITE COVERAGE: 46.83 %

FLOOD ZONE DESIGNATION: ZONE X  
MAP 39049C0018K, 06/17/2008

**PROJECT DESCRIPTION**

THIS PROJECT CONSISTS OF THE INSTALLATION OF FOUR (4) NEW 70' LIGHTS FOR THE MULTI-PURPOSE SYNTHETIC TURF AT DUBLIN SCIOTO HIGH SCHOOL.



**CIVIL ENGINEERING** | www.kleingers.com  
**SURVEYING** | 350 Worthington Rd  
**LANDSCAPE ARCHITECTURE** | Suite H  
Westerville, OH 43082  
614.882.4311

SEAL:	
NO.	DATE DESCRIPTION

SEAL:	
NO.	DATE DESCRIPTION

**DUBLIN SCIOTO HIGH SCHOOL TURF FIELD LIGHTS**  
4000 HARD ROAD  
CITY OF DUBLIN  
DUBLIN, OH 43016

PROJECT NO: 240173.003  
DATE: 03/19/2025

SCALE: **AS SHOWN**

SHEET NAME: **ZONING TITLE SHEET**

SHEET NO: **C501**

THE WOODLANDS  
SECTION 2  
PB 66 PG 99

24

25

26

26

27

M22°16'30"E 1021.15'

BOARD OF EDUCATION, WASHINGTON  
LOCAL SCHOOL DISTRICT  
DB 3265 PG 637  
10.00 A

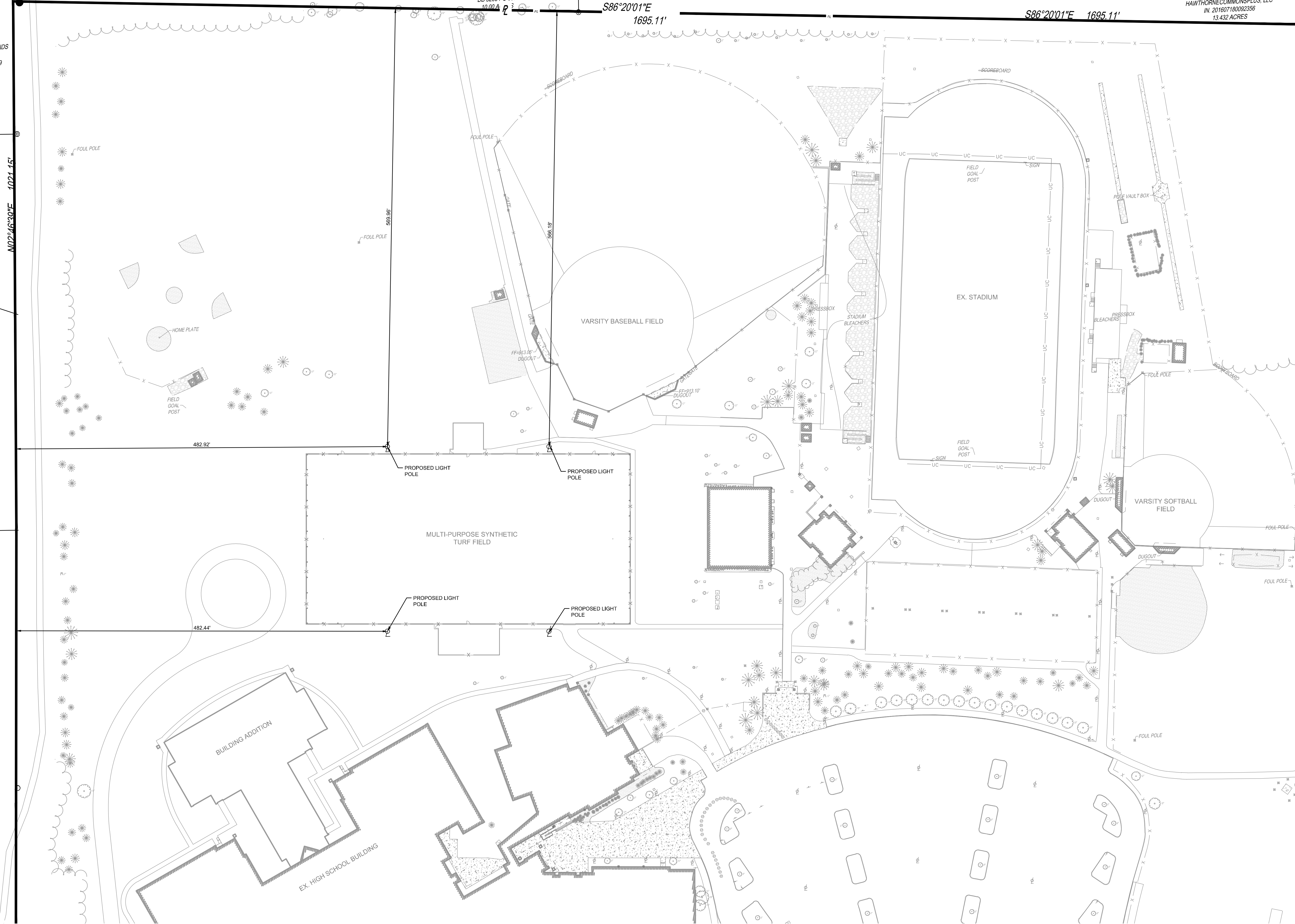
S86°20'01"E  
1695.11'

S86°20'01"E 1695.11'

HAWTHORNECOMMONSPUS, LLC  
IN. 201607180092356  
13.432 ACRES



CIVIL ENGINEERING SURVEYING LANDSCAPE ARCHITECTURE  
www.kleingers.com  
350 Worthington Rd  
Suite H  
Westonville, OH 43082  
614.882.4311



SEAL:

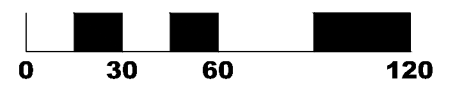
NO. DATE DESCRIPTION

**DUBLIN SCIOTO  
HIGH SCHOOL  
TURF FIELD  
LIGHTS**  
4000 HARD ROAD  
CITY OF DUBLIN  
DUBLIN, OH 43016

PROJECT NO: 240173.003

DATE: 03/19/2025

SCALE:



SHEET NAME:

**SITE PLAN**

SHEET NO.

**C502**

# Dublin Scioto High School Turf Field

Dublin, OH

## Lighting System

Pole/Fixture Summary						
Pole ID	Pole Height	Mtg Height	Fixture Qty	Luminaire Type	Load	Circuit
F1-F4	70'	70'	6	TLC-LED-1500	8.46 kW	A
		16'	2	TLC-BT-575	1.15 kW	A
4			32		38.44 kW	

Circuit Summary			
Circuit	Description	Load	Fixture Qty
A	Football	38.44 kW	32

Fixture Type Summary							
Type	Source	Wattage	Lumens	L90	L80	L70	Quantity
TLC-BT-575	LED 5700K - 75 CRI	575W	52,000	>120,000	>120,000	>120,000	8
TLC-LED-1500	LED 5700K - 75 CRI	1410W	181,000	>120,000	>120,000	>120,000	24

Single Luminaire Amperage Draw Chart							
Driver Specifications (.90 min power factor)	Line Amperage Per Luminaire (max draw)						
	208 (60)	220 (60)	240 (60)	277 (60)	347 (60)	380 (60)	480 (60)
Single Phase Voltage							
TLC-BT-575	3.3	3.2	2.9	2.5	2.0	1.8	1.5
TLC-LED-1500	8.4	7.9	7.3	6.3	5.0	4.6	3.6

## Light Level Summary

Calculation Grid Summary								
Grid Name	Calculation Metric	Illumination Ave					Circuits	Fixture Qty
		Ave	Min	Max	Max/Min	Ave/Min		
Blanket	Horizontal	13.30	0	56	85665.75	20231.98	A	32
Football	Horizontal Illuminance	50.37	41	56	1.36	1.23	A	32
Spill @ 3ft.	Horizontal Illuminance	0.0000	0.00	0.00	-	-	A	32
Spill @ 5ft.	Max Candela Metric	2.2596	0.00	13.19	-	-	A	32
Spill @ 5ft.	Max Vertical Illuminance Metric	0.0000	0.00	0.00	-	-	A	32
Spill @ 5ft.	True Max Vert Illuminance Metric	0.0000	0.00	0.00	-	-	A	32

## From Hometown to Professional



# L1.0



**We Make It Happen.**

Not to be reproduced in whole or part without the written consent of Musco Sports Lighting, LLC. ©1981, 2023 Musco Sports Lighting, LLC.

**PROJECT SUMMARY**

Equipment List For Areas Shown				Luminaires				
Pole								
QTY	LOCATION	SIZE	GRADE ELEVATION	ABOVE GRADE LEVEL	LUMINAIRE TYPE	QTY/POLE	THIS GRID	OTHER GRIDS
4	F1-F4	70'	-	70'	TLC-LED-1500	6	6	0
				15.5'	TLC-BT-575	2	2	0
4				Totals		32	32	0

\*Above Grade level relative to the field

### Dublin Scioto High School Turf Field

Dublin, OH

Grid Summary	
Name	Football
Size	360' x 160'
Spacing	30.0'
Height	3.0' above grade

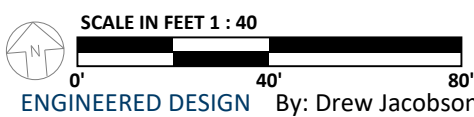
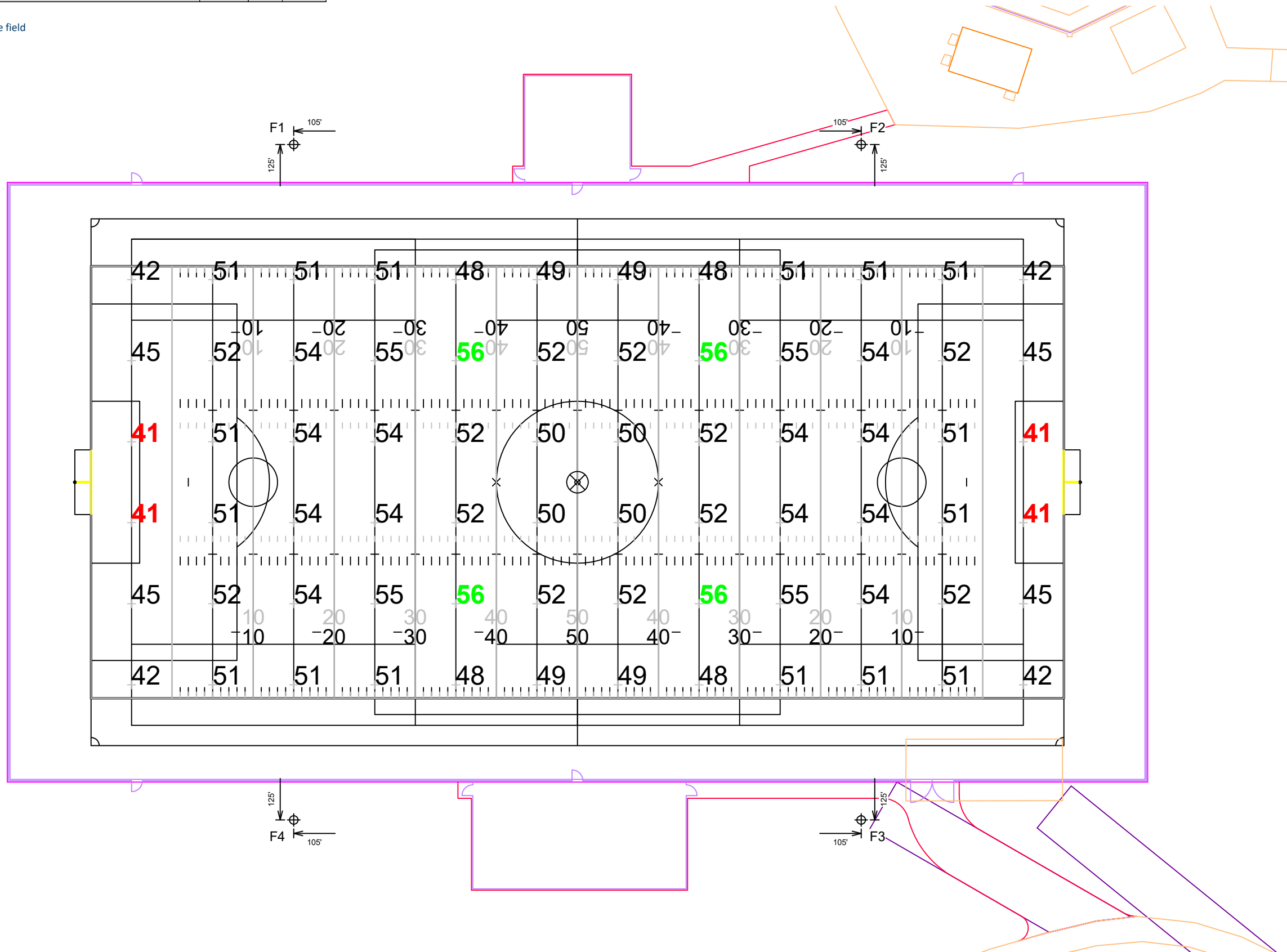
Illumination Summary	
MAINTAINED HORIZONTAL FOOTCANDLES	
Entire Grid	
Guaranteed Average	50
Scan Average	50.37
Maximum	56
Minimum	41
Avg/Min	1.23
Guaranteed Max/Min	2
Max/Min	1.36
UG (adjacent pts)	1.23
CU	0.67
No. of Points	72
LUMINAIRE INFORMATION	
Applied Circuits	A
No. of Luminaires	32
Total Load	38.44 kW

**Guaranteed Performance:** The ILLUMINATION described above is guaranteed per your Musco Warranty document and includes a 0.95 dirt depreciation factor.

**Field Measurements:** Individual field measurements may vary from computer-calculated predictions and should be taken in accordance with IESNA RP-6-15.

**Electrical System Requirements:** Refer to Amperage Draw Chart and/or the "Musco Control System Summary" for electrical sizing.

**Installation Requirements:** Results assume ± 3% nominal voltage at line side of the driver and structures located within 3 feet (1m) of design locations.



Pole location(s) ⊕ dimensions are relative to 0,0 reference point(s) ⊗

# L1.1

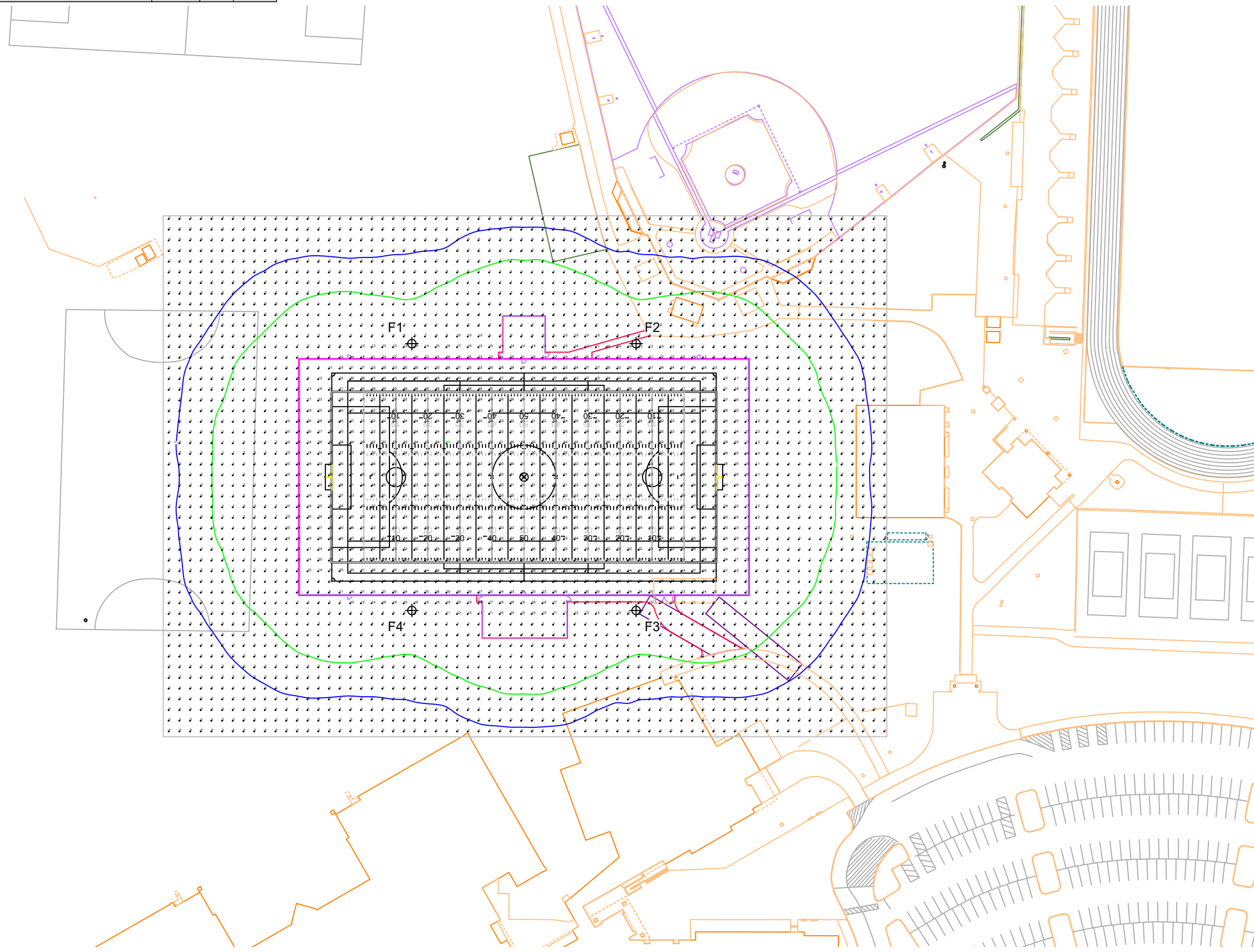


Not to be reproduced in whole or part without the written consent of Musco Sports Lighting, LLC. ©1981, 2023 Musco Sports Lighting, LLC.

## ILLUMINATION SUMMARY

Pole				Luminaires				
QTY	LOCATION	SIZE	GRADE ELEVATION	ABOVE GRADE LEVEL	LUMINAIRE TYPE	QTY/POLE	THIS GRID	OTHER GRIDS
4	F1-F4	70'	-	70'	TLC-LED-1500	6	6	0
				15.5'	TLC-BT-575	2	2	0
4				Totals		32	32	0

\*Above Grade level relative to the field



## Dublin Scioto High School Turf Field

Dublin, OH

Grid Summary	
Name Blanket	
Spacing	10.0'
Height	3.0' above grade

Illumination Summary	
MAINTAINED HORIZONTAL FOOTCANDLES	
Entire Grid	
Scan Average	13.30
Maximum	56
Minimum	0
Avg/Min	20231.98
Max/Min	85665.75
UG (adjacent pts)	2.73
CU	0.91
No. of Points	3332
LUMINAIRE INFORMATION	
Applied Circuits	A
No. of Luminaires	32
Total Load	38.44 kW

**Guaranteed Performance:** The ILLUMINATION described above is guaranteed per your Musco Warranty document and includes a 0.95 dirt depreciation factor.

**Field Measurements:** Individual field measurements may vary from computer-calculated predictions and should be taken in accordance with IESNA RP-6-15.

**Electrical System Requirements:** Refer to Amperage Draw Chart and/or the "Musco Control System Summary" for electrical sizing.

**Installation Requirements:** Results assume ± 3% nominal voltage at line side of the driver and structures located within 3 feet (1m) of design locations.

# L1.2



**We Make It Happen.**

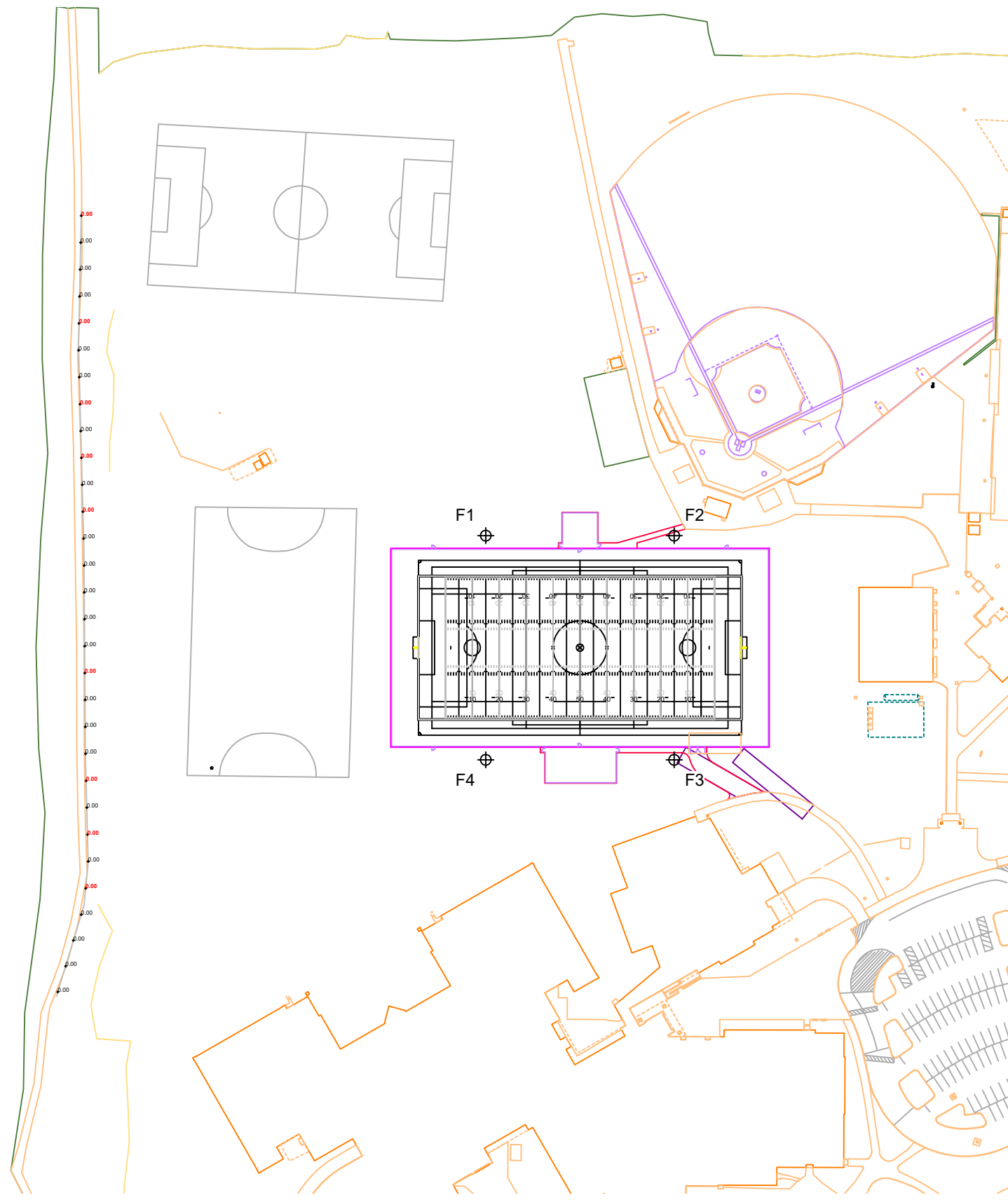
Not to be reproduced in whole or part without the written consent of Musco Sports Lighting, LLC. ©1981, 2023 Musco Sports Lighting, LLC.

**ILLUMINATION SUMMARY**

Pole location(s) ⊕ dimensions are relative to 0,0 reference point(s) ⊗

Equipment List For Areas Shown								
Pole				Luminaires				
QTY	LOCATION	SIZE	GRADE ELEVATION	ABOVE GRADE LEVEL	LUMINAIRE TYPE	QTY/POLE	THIS GRID	OTHER GRIDS
4	F1-F4	70'	-	70'	TLC-LED-1500	6	6	0
				15.5'	TLC-BT-575	2	2	0
4				Totals		32	32	0

\*Above Grade level relative to the field



## Dublin Scioto High School Turf Field

Dublin, OH

Grid Summary	
Name	Spill @ 3ft.
Spacing	30.0'
Height	3.0' above grade

Illumination Summary	
	INITIAL HORIZONTAL FOOTCANDLES
Entire Grid	
Scan Average	0.0000
Maximum	0.00
Minimum	0.00
CU	0.00
No. of Points	30
<b>LUMINAIRE INFORMATION</b>	
Applied Circuits	A
No. of Luminaires	32
Total Load	38.44 kW

**Guaranteed Performance:** The ILLUMINATION described above is guaranteed per your Musco Warranty document.

**Field Measurements:** Individual field measurements may vary from computer-calculated predictions and should be taken in accordance with IESNA RP-6-15.

**Electrical System Requirements:** Refer to Amperage Draw Chart and/or the "Musco Control System Summary" for electrical sizing.

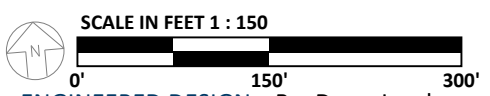
**Installation Requirements:** Results assume ± 3% nominal voltage at line side of the driver and structures located within 3 feet (1m) of design locations.

# L1.3



**We Make It Happen.**

Not to be reproduced in whole or part without the written consent of Musco Sports Lighting, LLC. ©1981, 2023 Musco Sports Lighting, LLC.



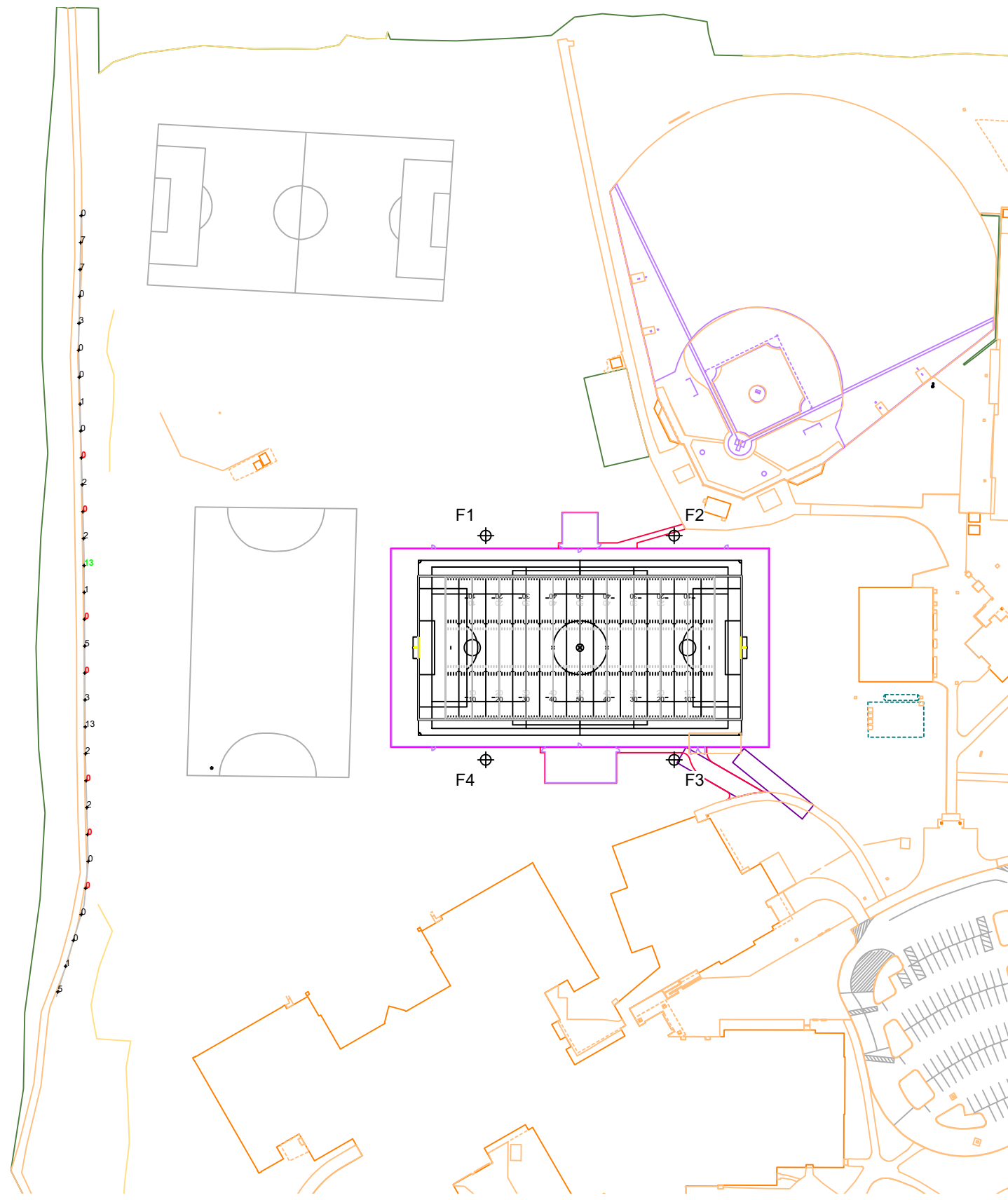
ENGINEERED DESIGN By: Drew Jacobson • File #239556B • 11-Nov-24

Pole location(s) ⊕ dimensions are relative to 0,0 reference point(s) ⊗

## ILLUMINATION SUMMARY

Equipment List For Areas Shown								
Pole				Luminaires				
QTY	LOCATION	SIZE	GRADE ELEVATION	ABOVE GRADE LEVEL	LUMINAIRE TYPE	QTY/POLE	THIS GRID	OTHER GRIDS
4	F1-F4	70'	-	70'	TLC-LED-1500	6	6	0
				15.5'	TLC-BT-575	2	2	0
4				Totals		32	32	0

\*Above Grade level relative to the field



## Dublin Scioto High School Turf Field

Dublin, OH

Grid Summary	
Name	Spill @ 5ft.
Spacing	30.0'
Height	5.0' above grade

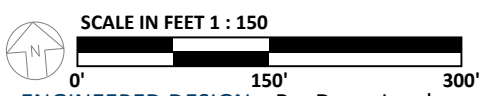
Illumination Summary		INITIAL CANDELA (PER FIXTURE)
		Entire Grid
Scan Average	2.2596	
Maximum	13.19	
Minimum	0.00	
CU	0.00	
No. of Points	30	
<b>LUMINAIRE INFORMATION</b>		
Applied Circuits	A	
No. of Luminaires	32	
Total Load	38.44 kW	

**Guaranteed Performance:** The ILLUMINATION described above is guaranteed per your Musco Warranty document.

**Field Measurements:** Individual field measurements may vary from computer-calculated predictions and should be taken in accordance with IESNA RP-6-15.

**Electrical System Requirements:** Refer to Amperage Draw Chart and/or the "Musco Control System Summary" for electrical sizing.

**Installation Requirements:** Results assume ± 3% nominal voltage at line side of the driver and structures located within 3 feet (1m) of design locations.



ENGINEERED DESIGN By: Drew Jacobson • File #239556B • 11-Nov-24

Pole location(s) ⊕ dimensions are relative to 0,0 reference point(s) ⊗

# L1.4



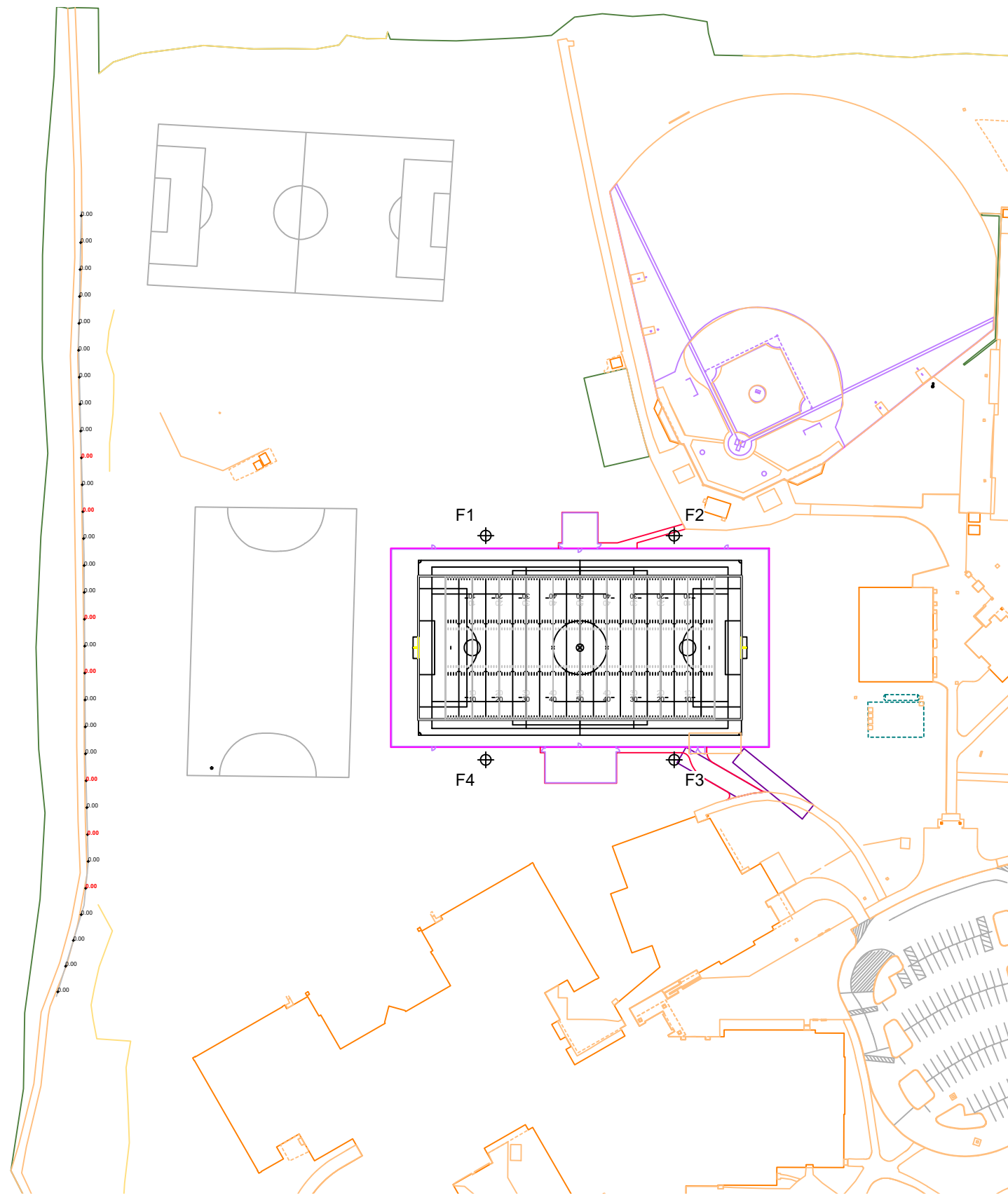
**We Make It Happen.**

Not to be reproduced in whole or part without the written consent of Musco Sports Lighting, LLC. ©1981, 2023 Musco Sports Lighting, LLC.

## ILLUMINATION SUMMARY

Equipment List For Areas Shown								
Pole				Luminaires				
QTY	LOCATION	SIZE	GRADE ELEVATION	ABOVE GRADE LEVEL	LUMINAIRE TYPE	QTY/POLE	THIS GRID	OTHER GRIDS
4	F1-F4	70'	-	70'	TLC-LED-1500	6	6	0
				15.5'	TLC-BT-575	2	2	0
4				Totals		32	32	0

\*Above Grade level relative to the field



## Dublin Scioto High School Turf Field

Dublin, OH

Grid Summary	
Name	Spill @ 5ft.
Spacing	30.0'
Height	5.0' above grade

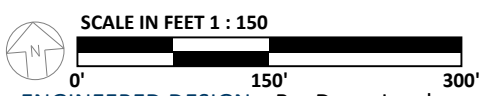
Illumination Summary		INITIAL MAX VERTICAL FOOTCANDLES
		Entire Grid
Scan Average	0.0000	
Maximum	0.00	
Minimum	0.00	
CU	0.00	
No. of Points	30	
LUMINAIRE INFORMATION		
Applied Circuits	A	
No. of Luminaires	32	
Total Load	38.44 kW	

**Guaranteed Performance:** The ILLUMINATION described above is guaranteed per your Musco Warranty document.

**Field Measurements:** Individual field measurements may vary from computer-calculated predictions and should be taken in accordance with IESNA RP-6-15.

**Electrical System Requirements:** Refer to Amperage Draw Chart and/or the "Musco Control System Summary" for electrical sizing.

**Installation Requirements:** Results assume ± 3% nominal voltage at line side of the driver and structures located within 3 feet (1m) of design locations.



ENGINEERED DESIGN By: Drew Jacobson • File #239556B • 11-Nov-24

Pole location(s) ⊕ dimensions are relative to 0,0 reference point(s) ⊗

# L1.5



**We Make It Happen.**

Not to be reproduced in whole or part without the written consent of Musco Sports Lighting, LLC. ©1981, 2023 Musco Sports Lighting, LLC.

**ILLUMINATION SUMMARY**



# Dublin Scioto High School Turf Field

Dublin, OH

## Equipment Layout

**INCLUDES:**  
 · Football

**Electrical System Requirements:** Refer to Amperage Draw Chart and/or the "Musco Control System Summary" for electrical sizing.

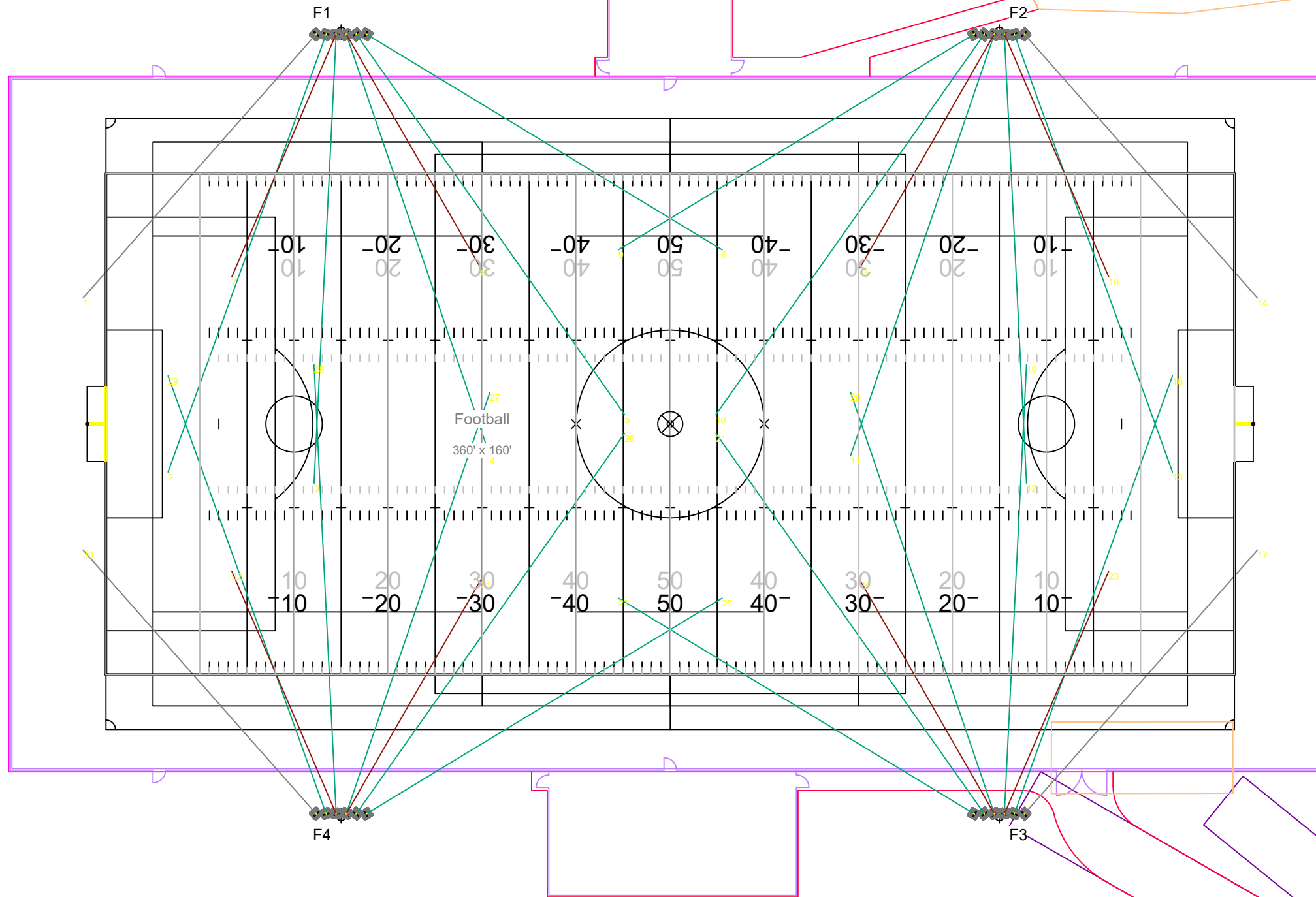
**Installation Requirements:** Results assume ± 3% nominal voltage at line side of the driver and structures located within 3 feet (1m) of design locations.

## Equipment List For Areas Shown

QTY	LOCATION	SIZE	GRADE ELEVATION	ABOVE GRADE LEVEL	Luminaires	
					LUMINAIRE TYPE	QTY/POLE
4	F1-F4	70'	-	70' 15.5'	TLC-LED-1500 TLC-BT-575	6 2
4	Totals					32

## Single Luminaire Amperage Draw Chart

Driver Specifications (.90 min power factor)	Line Amperage Per Luminaire (max draw)						
	208 (60)	220 (60)	240 (60)	277 (60)	347 (60)	380 (60)	480 (60)
Single Phase Voltage	3.3	3.2	2.9	2.5	2.0	1.8	1.5
TLC-BT-575	3.3	3.2	2.9	2.5	2.0	1.8	1.5
TLC-LED-1500	8.4	7.9	7.3	6.3	5.0	4.6	3.6



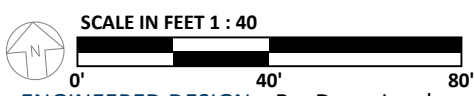
# L1.6



**We Make It Happen.**

Not to be reproduced in whole or part without the written consent of Musco Sports Lighting, LLC. ©1981, 2023 Musco Sports Lighting, LLC.

**EQUIPMENT LAYOUT**



ENGINEERED DESIGN By: Drew Jacobson • File #239556B • 11-Nov-24

Pole location(s) ⊕ dimensions are relative to 0,0 reference point(s) ⊗