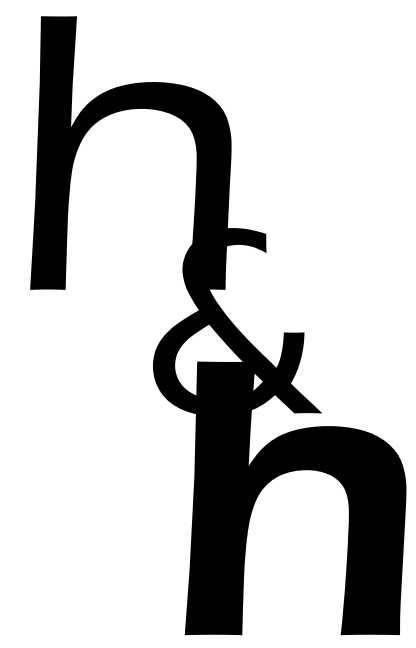




SITE PLAN
SCALE: 1"=10'-0"



HIS & HERS
ARCHITECTS
7422 SILVERLEAF CT
COLUMBUS, OHIO 43232

9372607927
HISANDHERSARCHITECTS@GMAIL.COM

PROJECT INFORMATION

PROPOSED IS THE NEW CONSTRUCTION OF A 1 1/2 STORY SINGLE FAMILY RESIDENCE ON A CURRENTLY VACANT LOT LOCATED BETWEEN S. RIVERVIEW ST AND THE SCIOTO RIVER.

BUILDING ZONING INFORMATION

PARCEL ID:	273413558-00
ZONING:	HR HISTORIC RESIDENTIAL
HEIGHT DISTRICT:	24' TO MEAN OF GABLE
PROPOSED HEIGHT:	21'-0"
LOT AREA:	11,630 SF
HISTORIC DISTRICT:	YES
FLOOD ZONE:	YES
EXISTING USE:	VACANT
PROPOSED USE:	SINGLE FAMILY RESIDENCE
MAX LOT COVERAGE:	45% OR 5,233 SF
PROPOSED LOT COVERAGE:	4,571 SF OR 39.3%
MAX BUILDING COVERAGE:	25% OR 2,907.5 SF
PROPOSED BUILDING COVERAGE:	2,896 SF OR 24.9%
FRONT YARD SETBACK:	0'
SIDE YARD SETBACK:	3'
TOTAL COMBINED SIDE YARD SETBACK:	12'
REAR YARD SETBACK:	20%

SQUARE FOOTAGE

LOWER LEVEL UNFINISHED	1008	SQ. FT.
LOWER LEVEL FINISHED	1168	SQ. FT.
FIRST FLOOR	2447	SQ. FT.
SECOND FLOOR	1368	SQ. FT.
TOTAL FINISHED	4983	SQ. FT.

LOCATION MAP



LAIRD RESIDENCE

S. RIVERVIEW ST
DUBLIN OH 43017

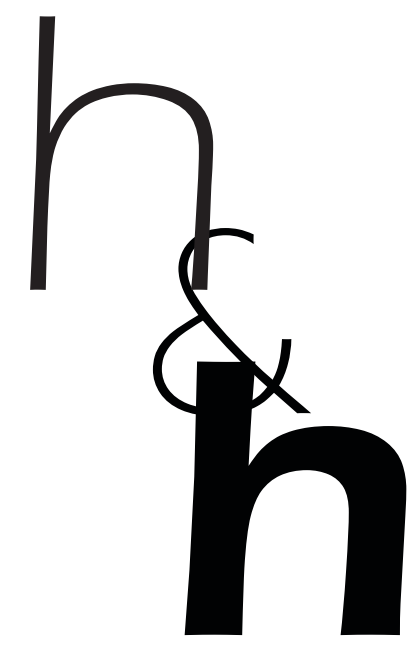
G1

SITE PLAN

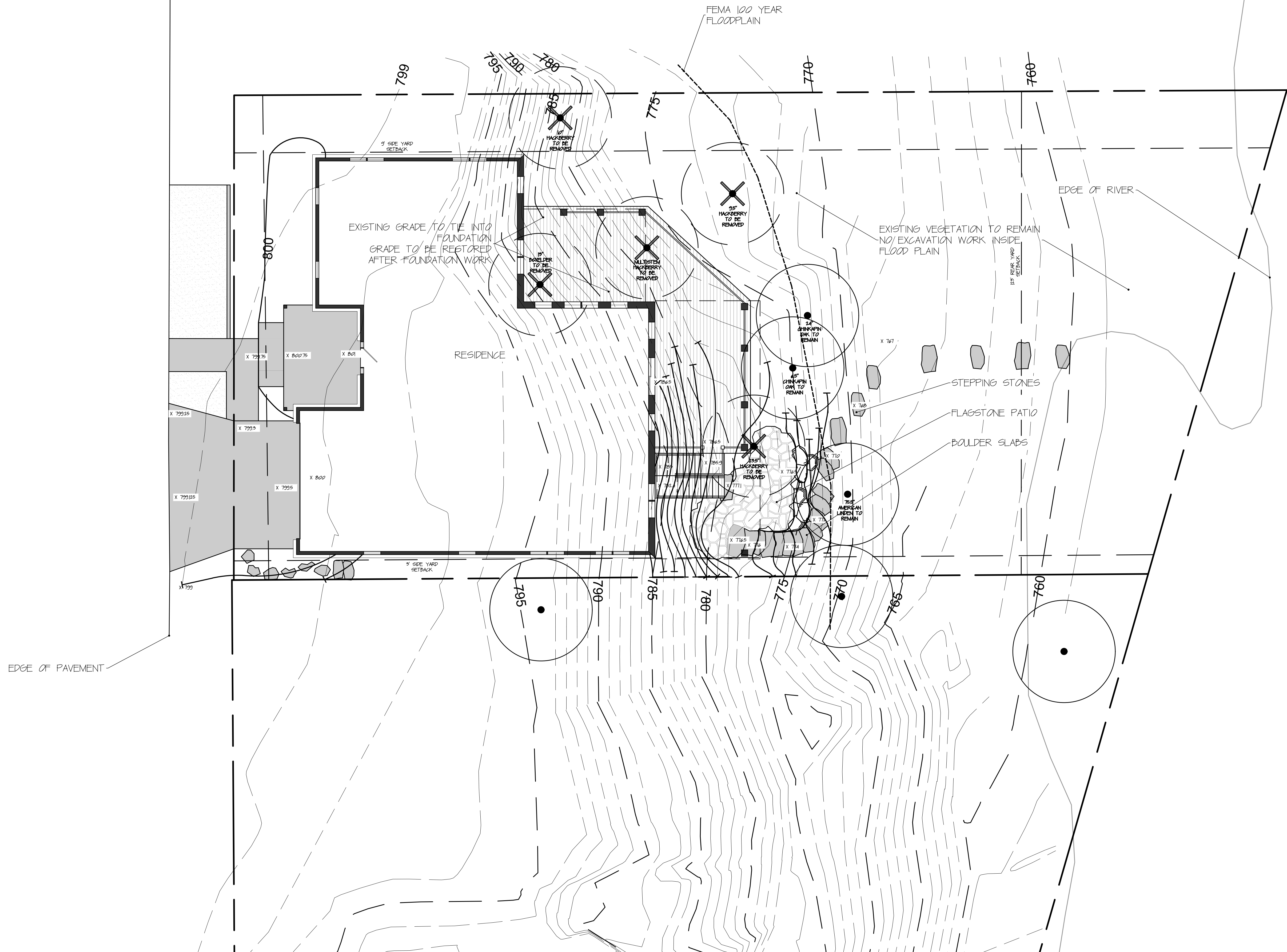


PHOTOS OF HOMES ON THE WEST SIDE OF S. RIVERVIEW STREET

PHOTOS OF HOMES ON THE EAST SIDE OF S. RIVERVIEW ST.



HIS & HERS ARCHITECTS
7422 SILVERLEAF CT
COLUMBUS, OHIO 43232
937.260.7927
HISANDHERSARCHITECTS@GMAIL.COM



Revisions:

DATE	
03.04.2025	

M.J. Design
ASSOCIATES INC.
LANDSCAPE DESIGN • BUILD • MAINTENANCE
www.mjdesignassociates.com

ADDRESS
8463 ESTATES CT.
PLAIN CITY, OH 43064

PHONE
614.873.7333
614.873.7444

LAIRD RESIDENCE

S. RIVERVIEW STREET
Dublin, Ohio 43017

Designed By: Joel John

Drawn By: Ashley Rogers

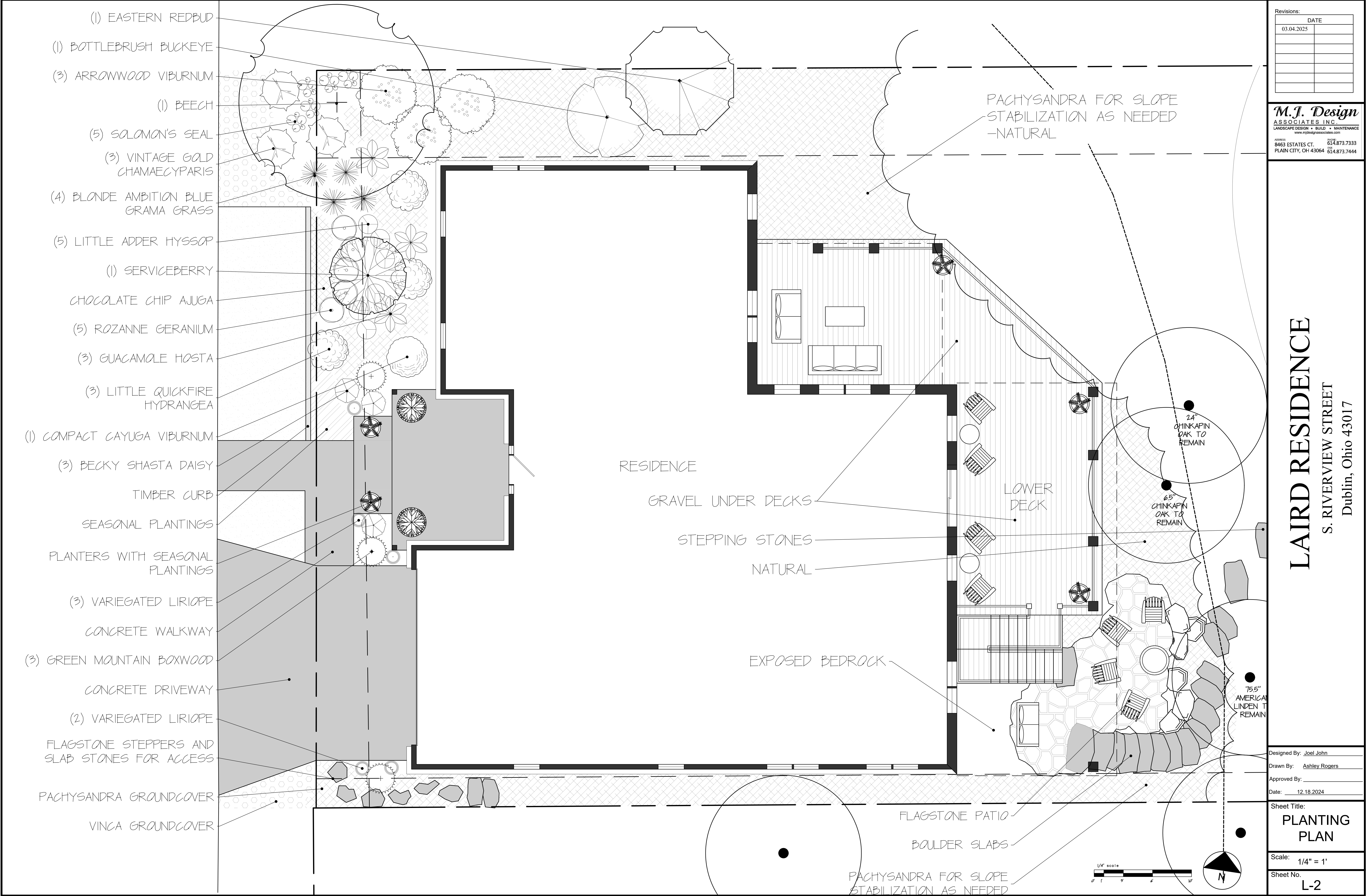
Approved By: _____

Date: 12.18.2024

Sheet Title:
SITE LAYOUT +
GRADING PLAN

Scale: 1/8" = 1'

Sheet No.
L-1



Revisions:

DATE	
03.04.2025	

M.J. Design
ASSOCIATES INC.
LANDSCAPE DESIGN • BUILD • MAINTENANCE
www.mjdesignassociates.com

ADDRESS: 8463 ESTATES CT.
PLAIN CITY, OH 43064

PHONE: 614.873.7333
FAX: 614.873.7444

LAIRD RESIDENCE
S. RIVERVIEW STREET
Dublin, Ohio 43017

Designed By: Joel John
Drawn By: Ashley Rogers
Approved By:
Date: 12.18.2024

Sheet Title:
PLANTING PLAN

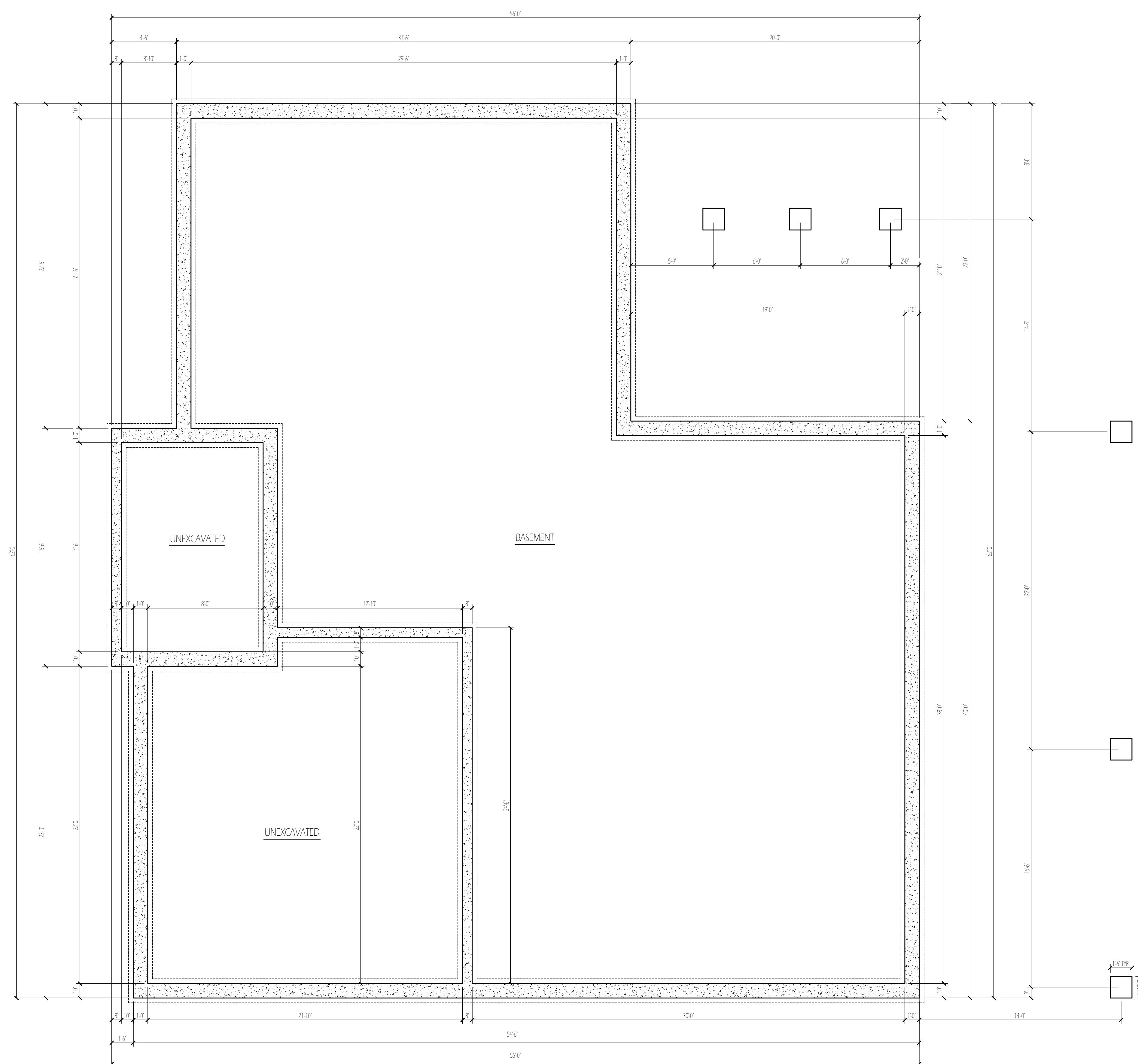
Scale: 1/4" = 1'
Sheet No.
L-2



HIS & HERS ARCHITECTS
7422 SILVERLEAF CT
COLUMBUS, OHIO 43232
9372607927
HISANDHERSARCHITECTS@GMAIL.COM

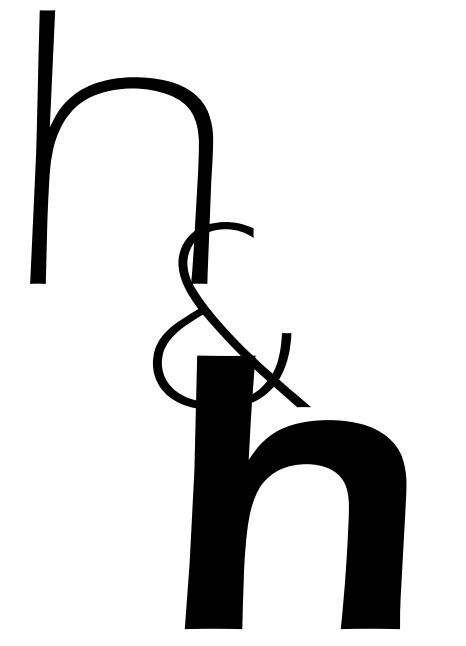
S. RIVERVIEW ST
DUBLIN, OH 43017

FOUNDATION PLAN

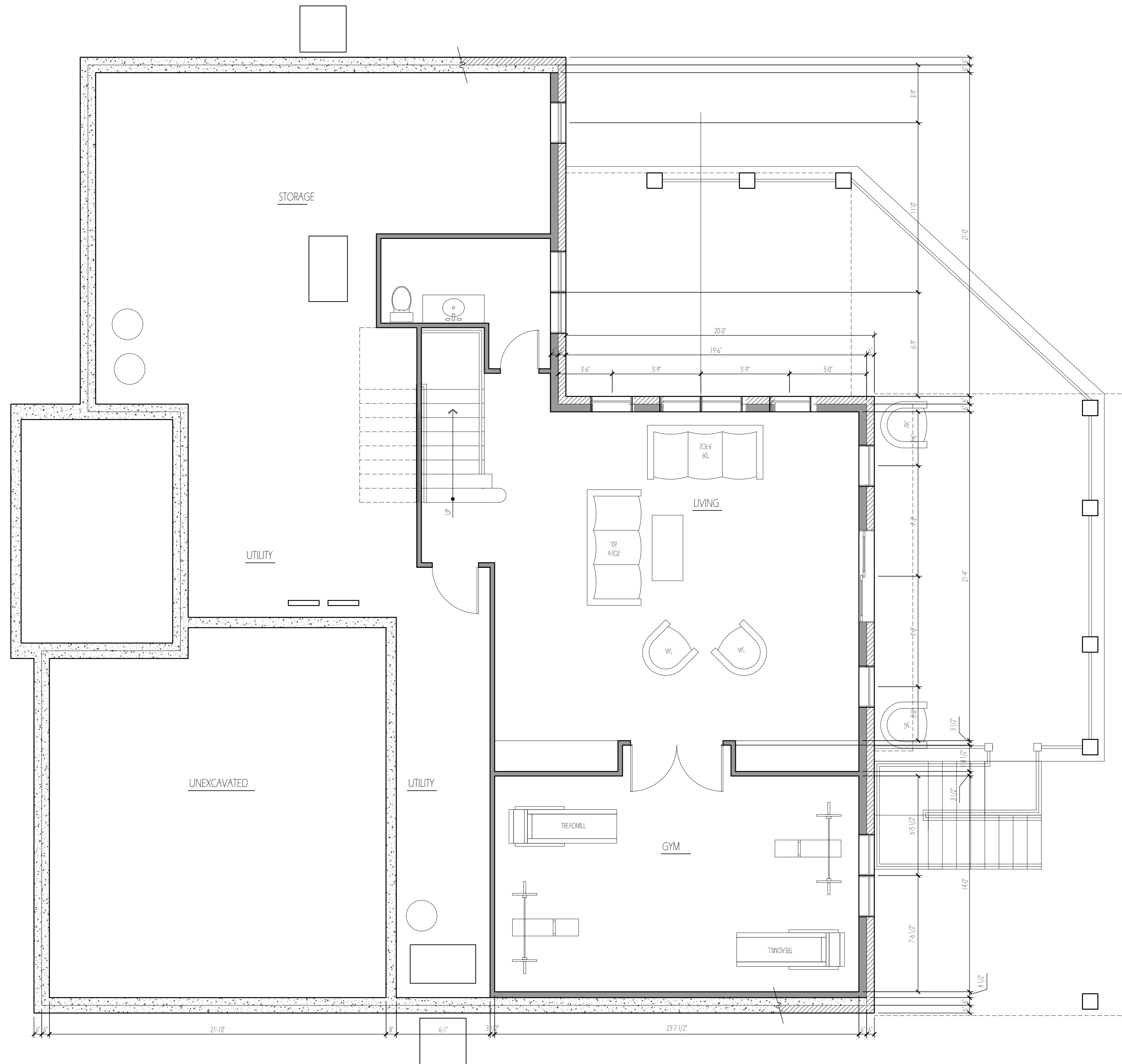


FOUNDATION PLAN

SCALE: 1/4" = 1'-0"



HIS & HERS ARCHITECTS
7422 SILVERLEAF CT
COLUMBUS, OHIO 43232
937.260.7927
HISANDHERSARCHITECTS@GMAIL.COM



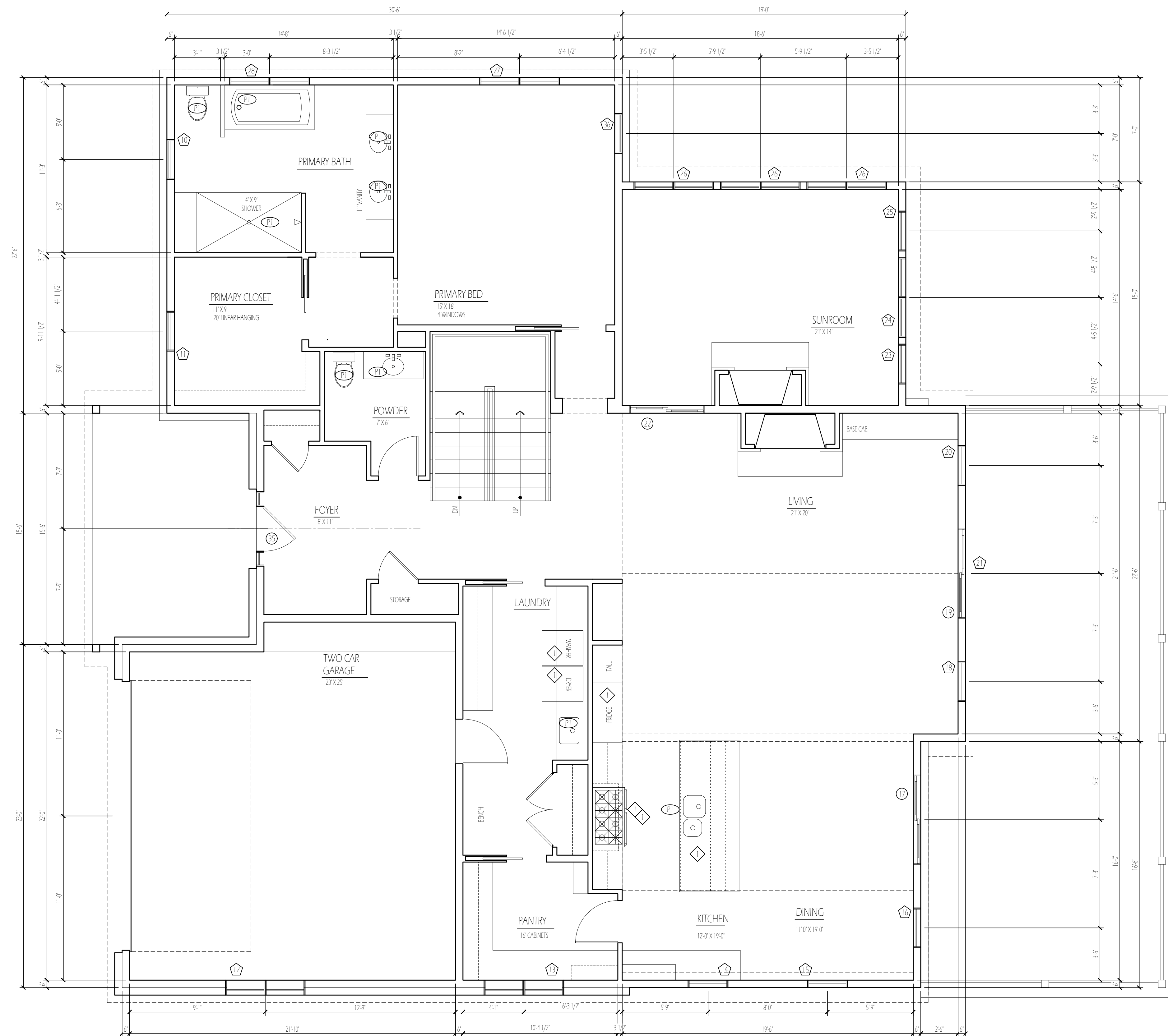
LOWER LEVEL PLAN
SCALE: 1/4" = 1'-0"

LAIRD RESIDENCE

S. RIVERVIEW ST
DUBLIN, OH 43017

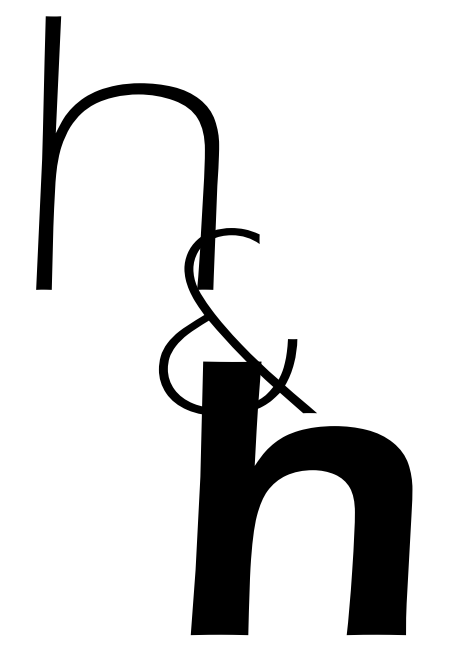
A1.1

LOWER LEVEL/FIRST FLOOR FRAMING PLAN



FIRST FLOOR PLAN

SCALE 1/4"=1'-0"



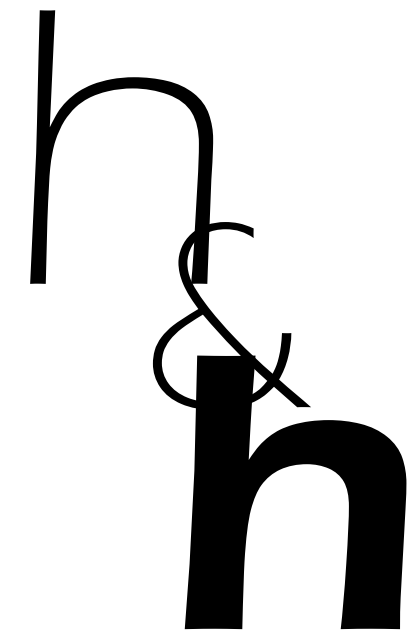
HIS & HERS ARCHITECTS
7422 SILVERLEAF CT
COLUMBUS, OHIO 43232

937.260.7927
HISANDHERSARCHITECTS@GMAIL.COM

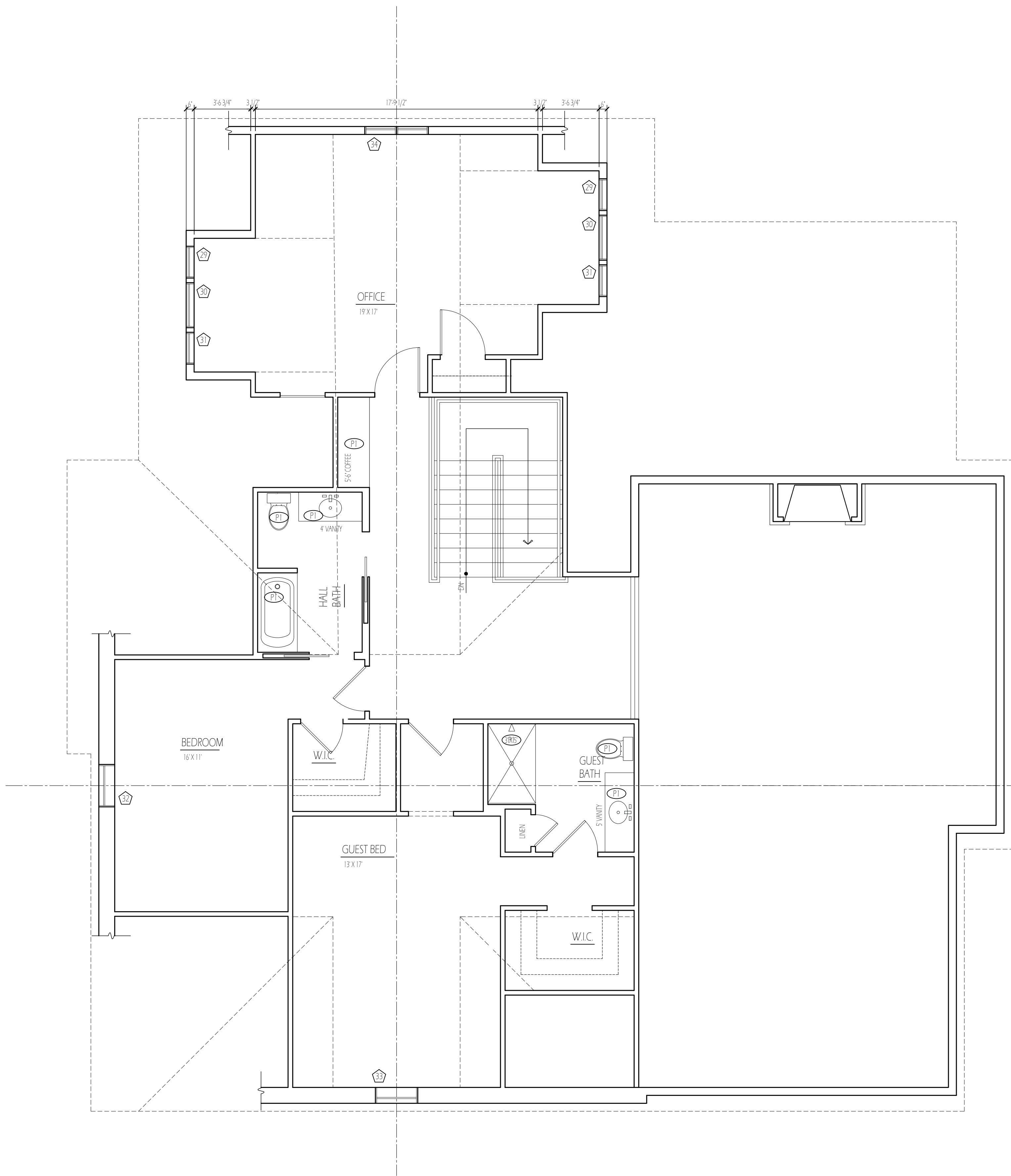
LAIRD RESIDENCE

S. RIVERVIEW ST
DUBLIN, OH 43017

A1.2



HIS & HERS ARCHITECTS
7422 SILVERLEAF CT
COLUMBUS, OHIO 43232
937.260.7927
HISANDHERSARCHITECTS@GMAIL.COM



SECOND FLOOR PLAN
SCALE: 1/4" = 1'-0"

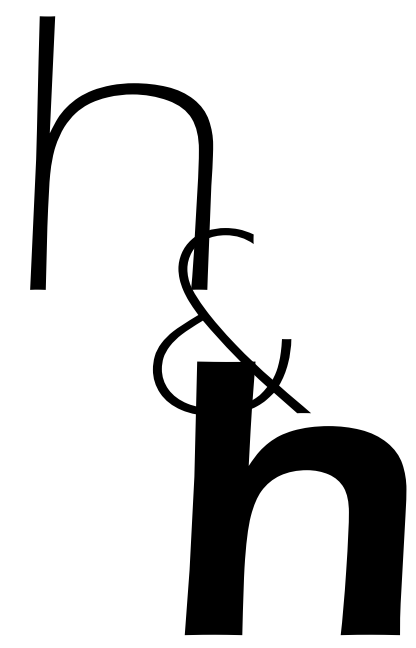
WINDOW SCHEDULE									
SEE EXTERIOR ELEVATIONS FOR LIFE CUTS AND EGRESS INFORMATION									
MARK	ROOM NAME	MANUFACTURER	MATERIAL	TYPE	R.O. WIDTH	R.O. HEIGHT	R.O. HEAD HEIGHT	U.I. FACTOR	REMARKS
1	GIM	MARVIN-ULTIMATE	WOOD-CLAD	CASEMENT	5'-5"	4'-11 5/8"	8'-2 1/2"	0.30	
2	LL LIVING	MARVIN-ULTIMATE	WOOD-CLAD	CASEMENT	2'-9"	7'-11 5/8"	8'-2 1/2"	0.30	
3	LL LIVING	MARVIN-ULTIMATE	WOOD-CLAD	CASEMENT	6'-1 5/8"	8'-2 1/2"	8'-2 1/2"	0.30	
4	LL LIVING	MARVIN-ULTIMATE	WOOD-CLAD	CASEMENT	2'-9"	7'-11 5/8"	8'-2 1/2"	0.30	
5	LL LIVING	MARVIN-ULTIMATE	WOOD-CLAD	CASEMENT	2'-9"	4'-11 5/8"	8'-2 1/2"	0.30	
6	LL LIVING	MARVIN-ULTIMATE	WOOD-CLAD	CASEMENT	5'-5"	4'-11 5/8"	8'-2 1/2"	0.30	
7	LL LIVING	MARVIN-ULTIMATE	WOOD-CLAD	CASEMENT	2'-9"	4'-11 5/8"	8'-2 1/2"	0.30	
8	POWDER	MARVIN-ULTIMATE	WOOD-CLAD	CASEMENT	5'-5"	4'-11 5/8"	8'-2 1/2"	0.30	
9	STORAGE	MARVIN-ULTIMATE	WOOD-CLAD	CASEMENT	2'-9"	4'-11 5/8"	8'-2 1/2"	0.30	
10	PRIMARY BATH	MARVIN-ULTIMATE	WOOD-CLAD	CASEMENT	2'-9"	4'-11 5/8"	8'-2 1/2"	0.30	
11	PRIMARY CLOSET	MARVIN-ULTIMATE	WOOD-CLAD	CASEMENT	2'-9"	4'-11 5/8"	8'-2 1/2"	0.30	
12	GARAGE	MARVIN-ULTIMATE	WOOD-CLAD	CASEMENT	5'-5"	4'-11 5/8"	8'-2 1/2"	0.30	
13	PANTRY	MARVIN-ULTIMATE	WOOD-CLAD	CASEMENT	5'-5"	4'-11 5/8"	8'-2 1/2"	0.30	
14	KITCHEN	MARVIN-ULTIMATE	WOOD-CLAD	CASEMENT	2'-9"	4'-11 5/8"	8'-2 1/2"	0.30	
15	DINING	MARVIN-ULTIMATE	WOOD-CLAD	CASEMENT	2'-9"	4'-11 5/8"	8'-2 1/2"	0.30	
16	DINING	MARVIN-ULTIMATE	WOOD-CLAD	CASEMENT	2'-9"	7'-11 5/8"	8'-2 1/2"	0.30	
17	DINING	MARVIN-ULTIMATE	WOOD-CLAD	CASEMENT	6'-1 5/8"	8'-2 1/2"	8'-2 1/2"	0.30	
18	LIVING	MARVIN-ULTIMATE	WOOD-CLAD	CASEMENT	2'-9"	9'-9 5/8"	10'-0 1/2"	0.30	
19	LIVING	MARVIN-ULTIMATE	WOOD-CLAD	CASEMENT	6'-1 5/8"	10'-0 1/2"	10'-0 1/2"	0.30	
20	LIVING	MARVIN-ULTIMATE	WOOD-CLAD	CASEMENT	2'-9"	9'-9 5/8"	10'-0 1/2"	0.30	
21	LIVING	MARVIN-ULTIMATE	WOOD-CLAD	FIXED	2'-1 1/2"	2'-1 1/2"		0.30	
22	SUNROOM	MARVIN-ULTIMATE	WOOD-CLAD	CASEMENT	5'-5"	7'-11 5/8"	8'-2 1/2"	0.30	
23	SUNROOM	MARVIN-ULTIMATE	WOOD-CLAD	CASEMENT	2'-9"	7'-11 5/8"	8'-2 1/2"	0.30	
24	SUNROOM	MARVIN-ULTIMATE	WOOD-CLAD	CASEMENT	5'-5"	7'-11 5/8"	8'-2 1/2"	0.30	
25	SUNROOM	MARVIN-ULTIMATE	WOOD-CLAD	CASEMENT	2'-9"	7'-11 5/8"	8'-2 1/2"	0.30	
26	SUNROOM	MARVIN-ULTIMATE	WOOD-CLAD	CASEMENT	5'-5"	7'-11 5/8"	8'-2 1/2"	0.30	
27	PRIMARY BEDROOM	MARVIN-ULTIMATE	WOOD-CLAD	CASEMENT	5'-5"	4'-11 5/8"	8'-2 1/2"	0.30	
28	PRIMARY BATH	MARVIN-ULTIMATE	WOOD-CLAD	CASEMENT	5'-5"	4'-11 5/8"	8'-2 1/2"	0.30	
29	OFFICE	MARVIN-ULTIMATE	WOOD-CLAD	CASEMENT	2'-1"	3'-11 5/8"	7'-0"	0.30	
30	OFFICE	MARVIN-ULTIMATE	WOOD-CLAD	CASEMENT	3'-1"	3'-11 5/8"	7'-0"	0.30	
31	OFFICE	MARVIN-ULTIMATE	WOOD-CLAD	CASEMENT	2'-1"	3'-11 5/8"	7'-0"	0.30	
32	BEDROOM	MARVIN-ULTIMATE	WOOD-CLAD	CASEMENT	2'-9"	4'-11 5/8"	8'-0"	0.30	
33	GUEST BEDROOM	MARVIN-ULTIMATE	WOOD-CLAD	CASEMENT	4'-1"	3'-11 5/8"	7'-0"	0.30	
34	OFFICE	MARVIN-ULTIMATE	WOOD-CLAD	CASEMENT	4'-1"	3'-11 5/8"	7'-0"	0.30	

LAIRD RESIDENCE

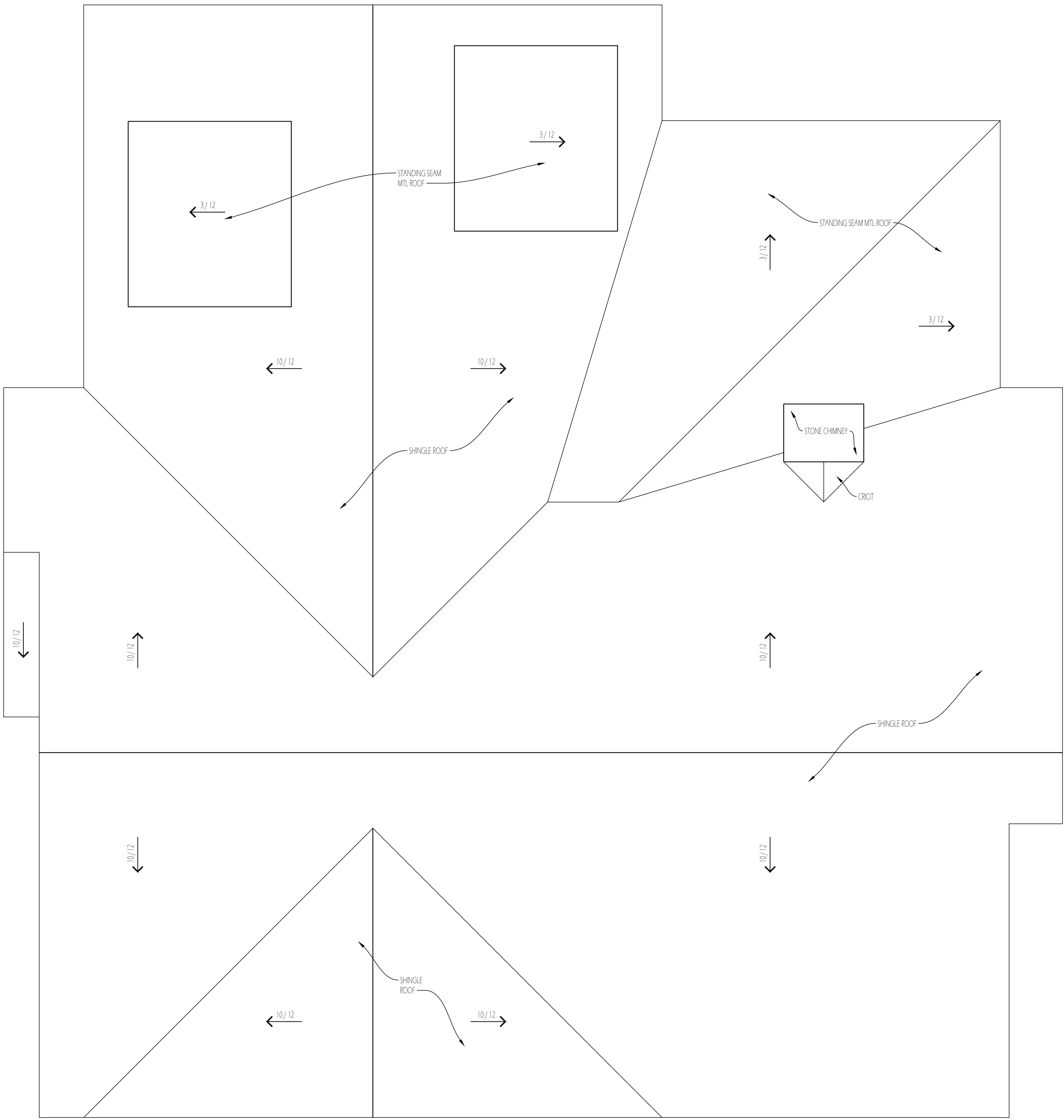
S. RIVERVIEW ST
DUBLIN, OH 43017

A1.3

SECOND FLOOR / ROOF FRAMING PLAN



HIS & HERS ARCHITECTS
7422 SILVERLEAF CT
COLUMBUS, OHIO 43232
937.260.7927
HISANDHERSARCHITECTS@GMAIL.COM

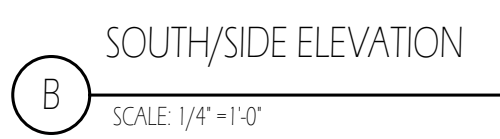


ROOF PLAN
SCALE 1/4"=1'-0"

LAIRD RESIDENCE
S. RIVERVIEW ST
DUBLIN, OH 43017

A1.4

ROOF PLAN



S. RIVERVIEW ST
DUBLIN, OH 43017

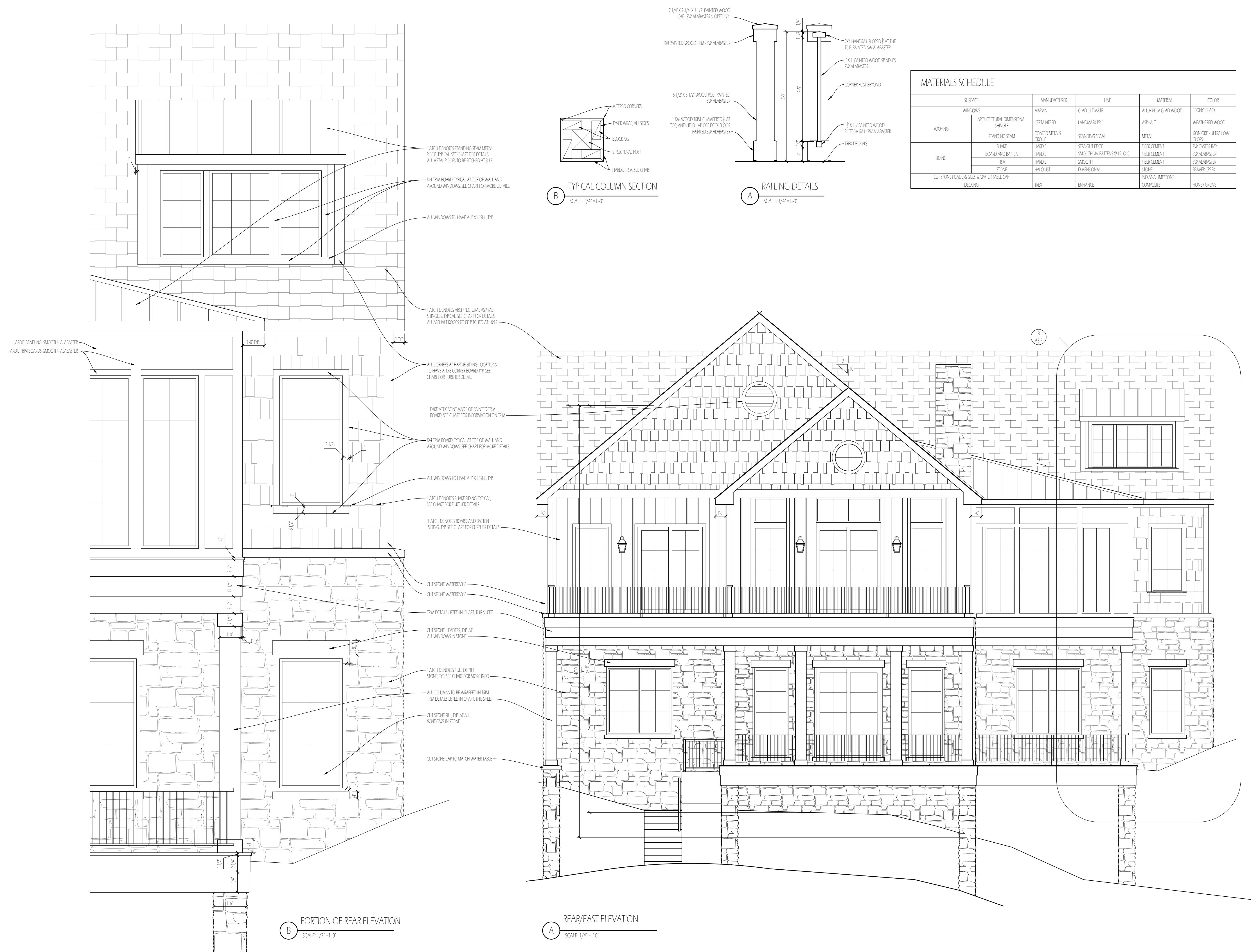
EXTERIOR ELEVATIONS

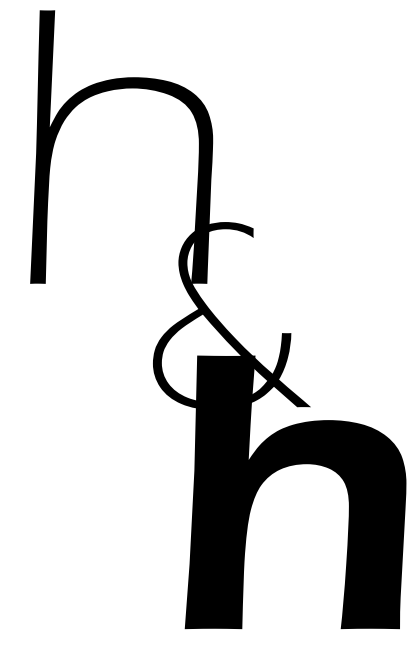


S. RIVERVIEW ST
DUBLIN, OH 43017

EXTERIOR ELEVATIONS

MATERIALS SCHEDULE					
SURFACE		MANUFACTURER	LINE	MATERIAL	COLOR
WINDOWS		MARVIN	CLAD ULTIMATE	ALUMINUM CLAD WOOD	BROWN (BLACK)
ROOFING	ARCHITECTURAL DIMENSIONAL SHINGLE	CERTAINTEED	LANDMARK PRO	ASPHALT	WEATHERED WOOD
	STANDING SEAM	COATED METALS GROUP	STANDING SEAM	METAL	IRON GREY - ULTRA LOW GLOSS
	SHAKE	HARDIE	STRAIGHT EDGE	FIBER CEMENT	SW OYSTER BAY
SIDING	BOARD AND BATTEN	HARDIE	SMOOTH W/ BATTENS @ 12" O.C.	FIBER CEMENT	SW ALABASTER
	TRIM	HARDIE	SMOOTH	FIBER CEMENT	SW ALABASTER
	STONE	HA/CURT	DIMENSIONAL	STONE	BEAVER CREEK
CUT STONE-HEADER, SILLS & WATER TABLE CAP				INDIANA LIMESTONE	
DECORATIVE		TEPEX	FINCHAM	COMPOSITE	HONEY GROUP





HIS & HERS ARCHITECTS
7422 SILVERLEAF CT
COLUMBUS, OHIO 43232
937.260.7927
HISANDHERSARCHITECTS@GMAIL.COM



NO DETAILS ON THIS ELEVATION ARE UNIQUE TO THE REST OF THE HOUSE.
PLEASE SEE THE OTHER ELEVATION SHEETS FOR DETAIL AND SPECIFICATIONS.

B NORTH/SIDE ELEVATION
SCALE: 1/4" = 1'-0"

LAIRD RESIDENCE

S. RIVERVIEW ST
DUBLIN, OH 43017

A3.3

EXTERIOR ELEVATIONS



BIRD'S EYE VIEW OF REAR FACADE



REAR FACADE VIEWED FROM RIVER'S EDGE



SOUTH FACADE VIEWED FROM NEIGHBORING LOT



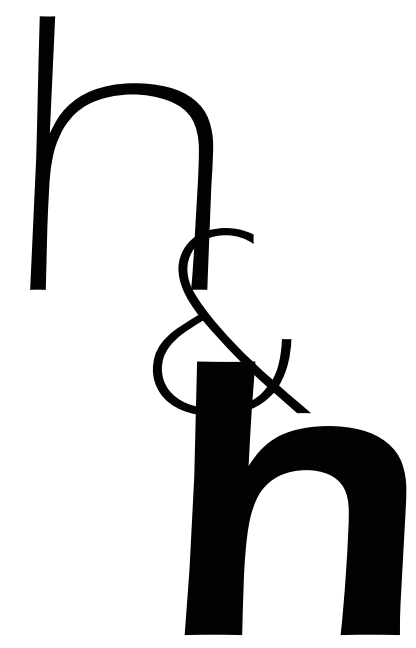
SOUTH FACADE VIEWED FROM S. RIVERVIEW ST



NORTH FACADE VIEWED FROM S. RIVERVIEW ST



FRONT FACADE VIEWED FROM S. RIVERVIEW ST



HIS & HERS ARCHITECTS
7422 SILVERLEAF CT
COLUMBUS, OHIO 43232
937.260.7927
HISANDHERSARCHITECTS@GMAIL.COM

LAIRD RESIDENCE

S. RIVERVIEW ST
DUBLIN OH 43017

A1

RENDERINGS



Standing seam



Roof shingles



Shake



Shake color

Trim &
Board & Batten



Stone



America's Favorite Garage Doors®

THE BEAUTY OF NATURAL WOOD



WOOD PRODUCT SELECTION GUIDE



CLASSIC™ WOOD

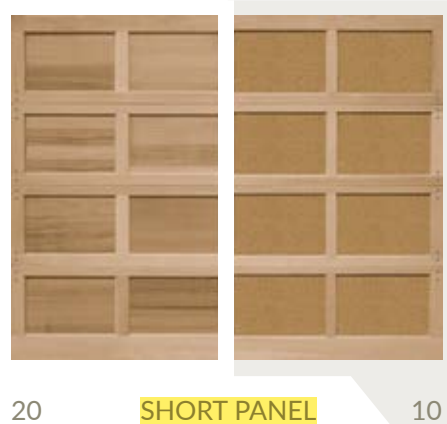
Add the beauty of natural wood to your home with a handcrafted door from Clopay's Classic™ Wood garage doors, featuring traditional raised, recessed and flush panel styles that complement most homes.

CLASSIC™ WOOD

MODELS 20 & 10

RECESSED PANEL WOOD DOORS

- Handcrafted 1-3/8" section thickness with stile and rail construction in Hemlock.
- Model 20 offers Luan or Okoume panels, both available in stain grade or paint grade options.
- Model 10 features paint grade Hardboard panels.
- Multiple panel and section configurations available. Visit www.clopaydoor.com for details.
- All doors can be factory primed or finish painted White. Custom stain and paint colors also available.
- Nine factory finished stain options are available on all stain grade wood species, resulting in stain colors that complement most home trim and entry door colors. See pages 40–43 for staining options.



20

SHORT PANEL

10



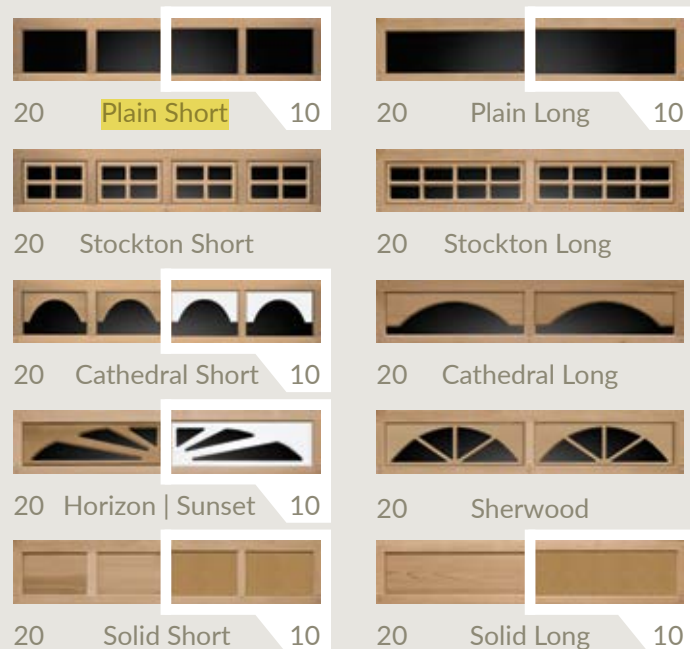
20

LONG PANEL

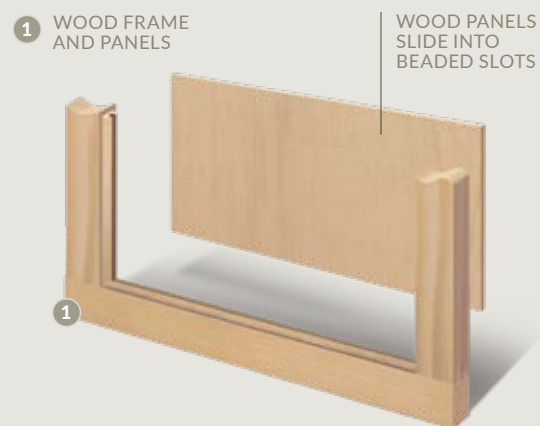
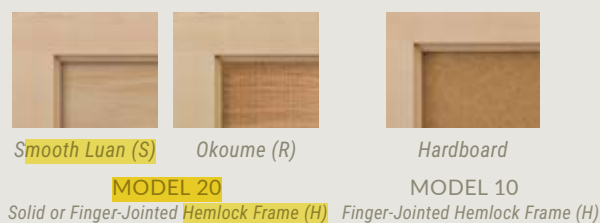
10

Door designs shown 8' wide × 7' high.

Window/Top Sections



Wood Options



Designer inserts constructed of carved wood on Model 20 and White ABS with UV resistant capstock on Model 10.

To view additional designs, windows and top sections available, please visit www.clopaydoor.com.



Wood Base

Latex Primer

White Latex

Exterior Paint First Coat

White Latex

Exterior Paint Second Coat

- Factory painted Clopay wood doors have one layer of primer and two coats of White exterior latex paint.
- Additionally, doors can be painted by the consumer with a high-quality exterior latex paint to match the home's trim.
- Door panels are sealed with a paintable caulk to resist moisture.

With Clopay's factory finish White paint option, your wood door arrives primed, painted and ready to install. We've eliminated the extra expense of hiring a contractor to finish the door on-site and the added worry that the job will be done right. You have peace of mind knowing that the door is stored and finished according to Clopay warranty guidelines for a durable, flawless, vibrant finish that is worthy of the most discriminating close-ups.

PAINT

LIMITED
1 YR
WARRANTY

DESIGNING YOUR DOOR

Use the information below to select the appropriate model number.

RESERVE® WOOD LIMITED EDITION

Custom Reserve Door Design Base Material Overlay Material

CRD 1 L F

MATERIAL ORDERING CODES KEY:

BASE MATERIAL

M = Meranti R = Redwood
C = Cedar F = Fir
L = Luan P = Smooth Extria
G = Grooved Extria

OVERLAY MATERIAL

M = Meranti
R = Redwood
C = Cedar
F = Fir

CLASSIC™ WOOD MODEL 44

Raised Panel Rail/Style Material Panel Material Panels Wide Panels High

44 F P # #

ORDERING CODES KEY:

RAIL/STYLE MATERIAL

R = Redwood F = FJ Hemlock
C = Cedar P = Extria
H = Hemlock

PANEL MATERIAL

R = Redwood
C = Cedar
H = Hemlock
P = Smooth Extria

RESERVE® WOOD SEMI-CUSTOM

Reserve Door Rail/Style Material Design Panel Material

R H 1 C

MATERIAL ORDERING CODES KEY:

RAIL/STYLE MATERIAL

R = Redwood
C = Cedar
H = Hemlock

PANEL MATERIAL

R = Redwood P = Smooth Extria
C = Cedar G = Grooved Extria
H = Hemlock

CLASSIC™ WOOD MODEL 20

Recessed Panel Material Finish Panels Wide Panels High

20 S P 8# 4#

MODEL 10

Recessed Panel Number of Panels Wide Numbers of Panels High

10 # #

ORDERING CODES KEY:

MATERIAL

F = FJ Hemlock R = Okoume
S = Smooth Luan

FINISH

S = Stain Grade
P = Paint Grade

RESERVE® WOOD MODERN

OFFSET WINDOW

Modern Reserve Door Design Material

MRD OW M

ACCENT STRIP

Modern Reserve Door Design Material

MRD AS C

HORIZONTAL CLADDING

Modern Reserve Door Design Material

MRD HC R

MATERIAL ORDERING CODES KEY:

C = Cedar F = Fir
R = Redwood M = Meranti

CLASSIC™ WOOD MODEL 33

Flush Material Finish

33 S S

ORDERING CODES KEY:

MATERIAL

S = Smooth Luan R = Okoume

FINISH

S = Stain Grade P = Paint Grade



Visit clopaydoor.com or call 1-800-2CLOPAY (225-6729) for more information on Clopay, America's Favorite Garage Doors.

Follow us on



©2025 Clopay Corporation. All rights reserved.

RSR-WOODIDEA-10_REV0425



START DESIGNING
YOUR NEW
GARAGE DOOR
OPEN CAMERA
AND POINT!

DECORATIVE HARDWARE

STANDARD



Spade Step Plate



Spade Lift
Handles

Attractive black powder coated handles and step plates are provided standard on Reserve® Wood garage doors. To further enhance the design of your door, optional decorative hardware, including handles, operable L-keylocks and strap hinges are available.

OPTIONAL



Spear Lift
Handles



Colonial Lift
Handles



Spade Strap Hinge*

*Complements Standard Spade Lift Handles
and Spade Step Plate*



Escutcheon
Plates



Spear
Step Plate



Colonial
Step Plate



Decorative Handles
with Keyholes



Spear Strap Hinge*



Colonial Strap Hinge*



Ring Door
Knocker



Aluminum Grip
Handles

(Reserve® Wood Modern)

*Door may not open properly if installed near the top depending on opening dimensions and lift type. See your Clopay Dealer for more details.

VISUAL COMFORT & Co.

8831101EN7-12: Extra Large One Light Outdoor Wall Lantern



Dimensions:

Width: 8.0"
Height: 23.0"

Extends: 9.5'
Wire: 6.5" (color;Black/White)
Mounting Proc.: Cap Nuts
Connection: Mounted To Box
Watts: 8
Lumens: 800

Bulbs:

1 - LEDMedium A19 8.0w Max. 120v included

Features:

- ENERGY STAR® Qualified
- LED Bulbs are an efficient, versatile and durable light source that deliver exceptional performance.
- Meets Title 24 energy efficiency standards
- Title 24 compliant when used with included Joint Appendix (JA8) approved lamp.

Material List:

1 Body - Aluminum - Black

Safety Listing:

Safety Listed for Wet Locations

Instruction Sheets:

Trilingual (English, Spanish, and French) (VADO_OD_WALL)
Trilingual (English, Spanish, and French) (8531101 8631101 8731101 8831101)

Collection: Vado

UPC #:785652130441

Finish: Black (12)

Shade / Glass / Diffuser Details:

Part	Material	Finish	Quantity	Item Number	Length	Width	Height	Diameter	Fitter Diameter	Shade Top Length	Shade Top Width	Shade Top Diameter
Shade	Glass	Clear	1				12.0	5.0				

Backplate / Canopy Details:

Type	Height / Length	Width	Depth	Diameter	Outlet Box Up	Outlet Box Down
Back Plate	8.0	6.0	0.75		3.5	

Replacement Bulb Data:

Product #	Type	Base	Watts	Watts Consumed	Volts	Hours	Lumens	Temp (°K)	CRI
-----------	------	------	-------	----------------	-------	-------	--------	-----------	-----

Shipping Information:

Package Type	Product #	Quantity	UPC	Length	Width	Height	Cube	Weight	Frt. Class	UPS Ship
Individual	8531101-12	1	785652130441	27.1	11.2	10.4	1.83	6.35	0	Yes
Master Pack	8831101EN7-12	0	10785652130448							No
NJ Pallet		42		48.0	40.0	77.0	85.56	266.7		No
NV Pallet		42		48.0	40.0	77.0	85.56	266.7		No

Epic Group S Riverview St

Quote #: AHXPC1N

A Proposal for Window and Door Products prepared for:

End Customer:

EPIC HOME GROUP OHIO

Job Site:

43017

Shipping Address:

SPECIALTY NORTH AMERICAN-NWD WAREHOUSE
2740 ROSEDALE PLAIN CITY RD
PLAIN CITY, OH 43064-9606

Project Description:

Laird residence

Featuring products from:

Marvin Windows and Doors



VERN ELLIS
SPECIALTY NORTH AMERICAN-NWD
WAREHOUSE
893 EASTWIND DR
WESTERVILLE, OH 43081-3328
Phone: (614) 505-7336

Email: vellis@snaohio.com

This report was generated on 5/1/2025 10:55:44 AM using the Marvin Order Management System, version 0004.15.00 (Current). Price in USD. Unit availability and price are subject to change. Dealer terms and conditions may apply.

UNIT SUMMARY

The following is a schedule of the windows and doors for this project. For additional unit details, please see Line Item Quotes.

Additional charges, tax or Terms and Conditions may apply. Detail pricing is per unit.

NUMBER OF LINES: 36		TOTAL UNIT QTY: 41		EXT NET PRICE: USD		133,230.33
LINE	MARK UNIT	PRODUCT LINE	ITEM	NET PRICE	QTY	EXTENDED NET PRICE
1	Gym	Ultimate	Marvin Assembly RO 73" X 71 5/8" Entered as Size by Units	3,858.51	1	3,858.51
2	Living	Ultimate	Casement CN 3696 RO 37" X 95 5/8" Entered as CN 3696	2,718.54	1	2,718.54
3	Living	Ultimate	Sliding Door (3" Stiles) CN 6080 RO 73 5/8" X 98 1/2" Entered as CN 6080	6,180.70	1	6,180.70
4	Living	Ultimate	Casement CN 3696 RO 37" X 95 5/8" Entered as CN 3696	2,718.54	1	2,718.54
5	Living	Ultimate	Casement CN 3672 RO 37" X 71 5/8" Entered as CN 3672	1,937.32	1	1,937.32
6	Living	Ultimate	Marvin Assembly RO 73" X 71 5/8" Entered as Size by Units	3,588.11	1	3,588.11
7	Living	Ultimate	Casement CN 3672 RO 37" X 71 5/8" Entered as CN 3672	1,937.32	1	1,937.32
8	Powder	Ultimate	Marvin Assembly RO 73" X 71 5/8" Entered as Size by Units	3,858.51	1	3,858.51
9	Storage	Ultimate	Casement CN 3672 RO 37" X 71 5/8" Entered as CN 3672	1,802.12	1	1,802.12
10	Primary Bath	Ultimate	Casement CN 3672 RO 37" X 71 5/8" Entered as CN 3672	1,937.32	1	1,937.32
11	Primary Closet	Ultimate	Casement CN 3272 RO 33" X 71 5/8"	1,799.05	1	1,799.05

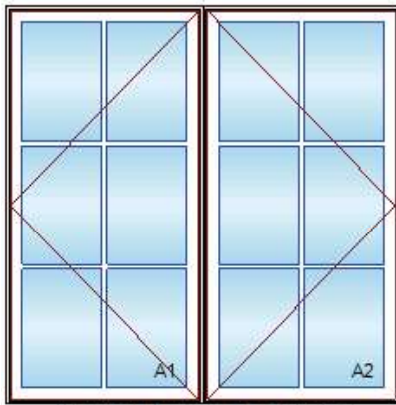
12	Garage	Ultimate	Entered as CN 3272 Marvin Assembly RO 65" X 59 5/8"	2,274.55	1	2,274.55
13	Pantry	Ultimate	Entered as Size by Units Marvin Assembly RO 65" X 59 5/8"	2,528.05	1	2,528.05
14	Kitchen	Ultimate	Entered as Size by Units Casement CN 3260 RO 33" X 59 5/8"	1,267.48	1	1,267.48
15	Dining	Ultimate	Entered as CN 3260 Casement CN 3260 RO 33" X 59 5/8"	1,267.48	1	1,267.48
16	Dining	Ultimate	Entered as CN 3260 Casement CN 3696 RO 37" X 95 5/8"	2,718.54	1	2,718.54
17	Dining	Ultimate	Entered as CN 3696 Sliding Door (3" Stiles) CN 6080 RO 73 5/8" X 98 1/2"	6,180.70	1	6,180.70
18	Living	Ultimate	Entered as CN 6080 Marvin Assembly RO 37" X 123 5/8"	3,874.64	1	3,874.64
19	Living	Ultimate	Entered as Size by Units Marvin Assembly RO 73 5/8" X 126 1/2"	8,671.87	1	8,671.87
20	Living	Ultimate	Entered as Size by Units Marvin Assembly RO 37" X 123 5/8"	3,874.64	1	3,874.64
21	Living	Ultimate	Entered as Size by Units Direct Glaze Round Top RO 31" X 31"	4,821.02	1	4,821.02
22	Sunroom Entry	Ultimate	Entered as FS 30" X 30" Sliding Door (3" Stiles) CN 5080 RO 61 5/8" X 98 1/2"	5,776.63	1	5,776.63
23	Sun Room	Ultimate	Entered as CN 5080 Casement CN 3296 RO 33" X 95 5/8"	2,737.75	1	2,737.75
24	Sunroom	Ultimate	Entered as CN 3296 Marvin Assembly RO 65" X 95 5/8"	5,439.40	1	5,439.40
25	Sun Room	Ultimate	Entered as Size by Units Casement CN 3296 RO 33" X 95 5/8"	2,737.75	1	2,737.75

26	Sunroom	Ultimate	CN 3296 Marvin Assembly RO 65" X 95 5/8" Entered as Size by Units	5,439.40	3	16,318.20
27	Primary Bedroom	Ultimate	Marvin Assembly RO 73" X 71 5/8" Entered as Size by Units	3,858.51	1	3,858.51
28	Primary Bath	Ultimate	Marvin Assembly RO 73" X 71 5/8" Entered as Size by Units	3,858.51	1	3,858.51
29	Office Front / Rear	Ultimate	Casement CN 2448 RO 25" X 47 5/8" Entered as CN 2448	1,181.43	2	2,362.86
30	Office Front / Rear	Ultimate	Casement CN 3648 RO 37" X 47 5/8" Entered as CN 3648	1,381.16	2	2,762.32
31	Office Front / Rear	Ultimate	Casement CN 2448 RO 25" X 47 5/8" Entered as CN 2448	1,181.43	2	2,362.86
32	Bedroom	Ultimate	Casement CN 3260 RO 33" X 59 5/8" Entered as CN 3260	1,563.23	1	1,563.23
33	Guest	Ultimate	Casement CN 3260 RO 33" X 59 5/8" Entered as CN 3260	1,563.23	1	1,563.23
34	Office Side	Ultimate	Marvin Assembly RO 49" X 47 5/8" Entered as Size by Units	1,748.35	1	1,748.35
35	Front Entry	Ultimate	Inswing French Door G2 RO 73 5/8" X 98 1/2" Entered as FS 72 5/8" X CN 80	8,325.41	1	8,325.41
36	Owner Bedroom	Ultimate	Casement CN 3672 RO 37" X 71 5/8" Entered as CN 3672	2,000.31	1	2,000.31

LINE ITEM QUOTES

The following is a schedule of the windows and doors for this project. For additional unit details, please see Line Item Quotes. Additional charges, tax or Terms and Conditions may apply. Detail pricing is per unit.

Line #1	Mark Unit: Gym	Net Price:		3,858.51
Qty: 1		Ext. Net Price:	USD	3,858.51



As Viewed From The Exterior

Entered As: Size by Units

MO 72 1/2" X 71 3/8"

FS 72" X 71 1/8"

RO 73" X 71 5/8"

Egress Information A1, A2

Width: 28 57/64" Height: 66 1/64"

Net Clear Opening: 13.24 SqFt

Performance Information A1, A2

U-Factor: 0.3

Solar Heat Gain Coefficient: 0.26

Visible Light Transmittance: 0.44

Condensation Resistance: 58

CPD Number: MAR-N-342-40342-00001

Performance Information OA

Paint Specification

Clad Exterior Color: AAMA 2605

Ebony Clad Exterior
Primed Pine Interior89.11
2W1H - Rectangle Assembly
Assembly Rough Opening
73" X 71 5/8"

Unit: A1 1,091.57

Ultimate Casement - Left Hand

CN 3672

Rough Opening 37" X 71 5/8"

Frame Size 36" X 71 1/8"

Ebony Clad Sash Exterior

Primed Pine Sash Interior

IG - 3/4"

Tempered Low E2 w/Argon

Black Perimeter and Spacer Bar

7/8" SDL - With Spacer Bar - Black 325.70

Rectangular - Special Cut 2W3H

Ebony Clad Ext - Primed Pine Int

Putty Exterior Glazing Profile

Ogee Interior Glazing Profile

Standard Bottom Rail

Black Weather Strip

White Folding Handle

***Handles/Covers Ship Loose

White Multi - Point Lock

Extruded Aluminum Screen

White Surround

Bright View Mesh

***Screen/Combo Ship Loose

Unit: A2 1,091.57

Ultimate Casement - Right Hand

CN 3672

Rough Opening 37" X 71 5/8"

Frame Size 36" X 71 1/8"

Ebony Clad Sash Exterior

Primed Pine Sash Interior

IG - 3/4"

Tempered Low E2 w/Argon

Black Perimeter and Spacer Bar

7/8" SDL - With Spacer Bar - Black 325.70

Rectangular - Special Cut 2W3H

Ebony Clad Ext - Primed Pine Int

Putty Exterior Glazing Profile

Ogee Interior Glazing Profile

Standard Bottom Rail

Black Weather Strip

White Folding Handle

***Handles/Covers Ship Loose

White Multi - Point Lock

Extruded Aluminum Screen

White Surround

Bright View Mesh

***Screen/Combo Ship Loose

Standard Mull Charge 39.94

6 9/16" Jambs 112.92

Nailing Fin

***Note: This configuration meets a minimum structural performance of DP 20 through either physical testing or calculations in accordance with AAMA 450 and

building code requirements. Mull certification ratings may vary from individual unit certification ratings. Reference the mulling chapter of the ADM for additional information.

***Note: Unit Availability and Price is Subject to Change

Line #2	Mark Unit: Living	Net Price:		2,718.54
Qty: 1		Ext. Net Price:	USD	2,718.54



As Viewed From The Exterior

Entered As: CN

MO 36 1/2" X 95 3/8"

CN 3696

FS 36" X 95 1/8"

RO 37" X 95 5/8"

Egress Information

No Egress Information available.

Performance Information

U-Factor: 0.29

Solar Heat Gain Coefficient: 0.26

Visible Light Transmittance: 0.44

Condensation Resistance: 58

CPD Number: MAR-N-342-40329-00009

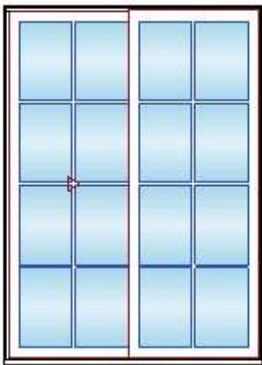
Paint Specification

Clad Exterior Color: AAMA 2605

Ebony Clad Exterior	
Primed Pine Interior	44.55
Ultimate Casement - Stationary	1,486.41
CN 3696	
Rough Opening 37" X 95 5/8"	
Frame Size 36" X 95 1/8"	
Ebony Clad Sash Exterior	
Primed Pine Sash Interior	
IG - 3/4"	590.72
Tempered Low E2 w/Argon	
Black Perimeter and Spacer Bar	
7/8" SDL - With Spacer Bar - Black	493.16
Rectangular - Special Cut 2W4H	
Ebony Clad Ext - Primed Pine Int	
Putty Exterior Glazing Profile	
Ogee Interior Glazing Profile	
Standard Bottom Rail	
Black Weather Strip	
Solid Wood Covers	
6 9/16" Jamb	103.70
Nailing Fin	

***Note: Unit Availability and Price is Subject to Change

Line #3	Mark Unit: Living	Net Price:		6,180.70
Qty: 1		Ext. Net Price:	USD	6,180.70



As Viewed From The Exterior

Entered As: CN

MO 73 1/8" X 98 1/4"

CN 6080

FS 72 5/8" X 98"

Ebony Clad Exterior	
Primed Pine Interior	119.83
Ultimate Sliding Door (3" Stiles) 4 9/16" - XO	4,281.01
CN 6080	
Rough Opening 73 5/8" X 98 1/2"	
Left Panel	
Ebony Clad Sash Exterior	
Primed Pine Sash Interior	
IG	
Tempered Low E2 w/Argon	
Black Perimeter and Spacer Bar	
7/8" SDL - With Spacer Bar - Black	424.03
Rectangular - Special Cut 2W4H	
Ebony Clad Ext - Primed Pine Int	
Putty Exterior Glazing Profile	
Ogee Interior Glazing Profile	98.33
Right Panel	
Ebony Clad Sash Exterior	
Primed Pine Sash Interior	
IG	
Tempered Low E2 w/Argon	
Black Perimeter and Spacer Bar	

RO 73 5/8" X 98 1/2"

Egress Information

Width: 28 3/4" Height: 94 3/8"

Net Clear Opening: 18.84 SqFt

Performance Information

U-Factor: 0.29

Solar Heat Gain Coefficient: 0.28

Visible Light Transmittance: 0.47

Condensation Resistance: 57

CPD Number: MAR-N-484-01651-00009

Paint Specification

Clad Exterior Color: AAMA 2605

7/8" SDL - With Spacer Bar - Black 424.03
Rectangular - Special Cut 2W4H
Ebony Clad Ext - Primed Pine Int
Putty Exterior Glazing Profile
Ogee Interior Glazing Profile 98.33
Harp G2 Handle(s)
Harp G2 Interior Handle(s)
2 Point Multi-Point Lock on Active Panel
Dark Bronze Active Exterior Handle Set on Active Panel Keyed 66.83
Dark Bronze Active Interior Handle Set on Active Panel 55.31
Keyed
Keyed Alike - Keyed Alike Group 1 19.97
Exterior Ultimate Sliding Screen G2 487.02
Ebony Surround
Bright View Mesh
***Screen/Combo Ship Loose
Ebony Performance Sill
Black Weather Strip
6 9/16" Jambs 106.01
Thru Jamb Installation w/ Nailing Fin

***Note: Unit Availability and Price is Subject to Change

Line #4	Mark Unit: Living	Net Price:		2,718.54
Qty: 1		Ext. Net Price:	USD	2,718.54



As Viewed From The Exterior

Entered As: CN

MO 36 1/2" X 95 3/8"

CN 3696

FS 36" X 95 1/8"

RO 37" X 95 5/8"

Egress Information

No Egress Information available.

Performance Information

U-Factor: 0.29

Solar Heat Gain Coefficient: 0.26

Visible Light Transmittance: 0.44

Condensation Resistance: 58

CPD Number: MAR-N-342-40329-00009

Paint Specification

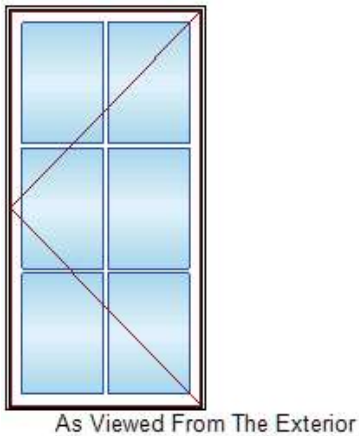
Clad Exterior Color: AAMA 2605

Ebony Clad Exterior
Primed Pine Interior 44.55
Ultimate Casement - Stationary 1,486.41
CN 3696
Rough Opening 37" X 95 5/8"
Frame Size 36" X 95 1/8"
Ebony Clad Sash Exterior
Primed Pine Sash Interior
IG - 3/4" 590.72
Tempered Low E2 w/Argon
Black Perimeter and Spacer Bar
7/8" SDL - With Spacer Bar - Black 493.16
Rectangular - Special Cut 2W4H
Ebony Clad Ext - Primed Pine Int
Putty Exterior Glazing Profile
Ogee Interior Glazing Profile
Standard Bottom Rail
Black Weather Strip
Solid Wood Covers
6 9/16" Jambs 103.70
Nailing Fin

***Note: Unit Availability and Price is Subject to Change

Line #5	Mark Unit: Living	Net Price:		1,937.32
Qty: 1		Ext. Net Price:	USD	1,937.32

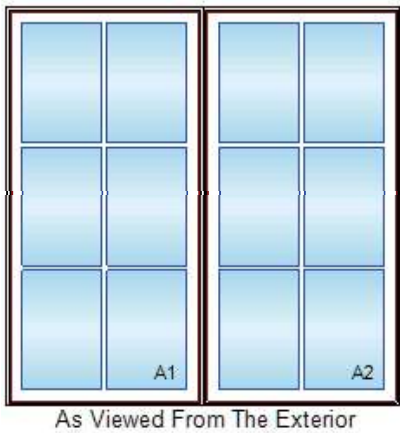
Ebony Clad Exterior
Primed Pine Interior 44.55
Ultimate Casement - Left Hand 1,091.57
CN 3672
Rough Opening 37" X 71 5/8"



Entered As: CN
MO 36 1/2" X 71 3/8"
CN 3672
FS 36" X 71 1/8"
RO 37" X 71 5/8"
Egress Information
Width: 28 57/64" Height: 66 1/64"
Net Clear Opening: 13.24 SqFt
Performance Information
U-Factor: 0.3
Solar Heat Gain Coefficient: 0.26
Visible Light Transmittance: 0.44
Condensation Resistance: 58
CPD Number: MAR-N-342-40342-00001
Paint Specification
Clad Exterior Color: AAMA 2605

Frame Size 36" X 71 1/8"
Ebony Clad Sash Exterior
Primed Pine Sash Interior
IG - 3/4" 391.00
Tempered Low E2 w/Argon
Black Perimeter and Spacer Bar
7/8" SDL - With Spacer Bar - Black 325.70
Rectangular - Special Cut 2W3H
Ebony Clad Ext - Primed Pine Int
Putty Exterior Glazing Profile
Ogee Interior Glazing Profile
Standard Bottom Rail
Black Weather Strip
White Folding Handle
***Handles/Covers Ship Loose
White Multi - Point Lock
Extruded Aluminum Screen
White Surround
Bright View Mesh
***Screen/Combo Ship Loose
6 9/16" Jambs 84.50
Nailing Fin
***Note: Unit Availability and Price is Subject to Change

Line #6	Mark Unit: Living	Net Price:		3,588.11
Qty: 1		Ext. Net Price:	USD	3,588.11



Entered As: Size by Units
MO 72 1/2" X 71 3/8"
FS 72" X 71 1/8"
RO 73" X 71 5/8"
Egress Information A1, A2
No Egress Information available.
Performance Information A1, A2
U-Factor: 0.3
Solar Heat Gain Coefficient: 0.26
Visible Light Transmittance: 0.44
Condensation Resistance: 58
CPD Number: MAR-N-342-40342-00001
Performance Information OA
Paint Specification

Ebony Clad Exterior
Primed Pine Interior 89.11
2W1H - Rectangle Assembly
Assembly Rough Opening
73" X 71 5/8"

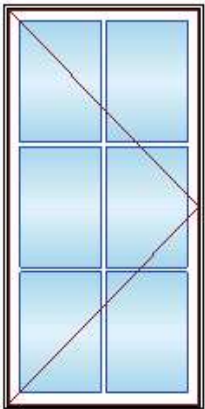
Unit: A1 956.37
Ultimate Casement - Stationary
CN 3672
Rough Opening 37" X 71 5/8"
Frame Size 36" X 71 1/8"
Ebony Clad Sash Exterior
Primed Pine Sash Interior
IG - 3/4" 391.00
Tempered Low E2 w/Argon
Black Perimeter and Spacer Bar
7/8" SDL - With Spacer Bar - Black 325.70
Rectangular - Special Cut 2W3H
Ebony Clad Ext - Primed Pine Int
Putty Exterior Glazing Profile
Ogee Interior Glazing Profile
Standard Bottom Rail
Black Weather Strip
Solid Wood Covers

Unit: A2 956.37
Ultimate Casement - Stationary
CN 3672
Rough Opening 37" X 71 5/8"
Frame Size 36" X 71 1/8"
Ebony Clad Sash Exterior

Clad Exterior Color: AAMA 2605

Primed Pine Sash Interior	
IG - 3/4"	391.00
Tempered Low E2 w/Argon	
Black Perimeter and Spacer Bar	
7/8" SDL - With Spacer Bar - Black	325.70
Rectangular - Special Cut 2W3H	
Ebony Clad Ext - Primed Pine Int	
Putty Exterior Glazing Profile	
Ogee Interior Glazing Profile	
Standard Bottom Rail	
Black Weather Strip	
Solid Wood Covers	
Standard Mull Charge	39.94
6 9/16" Jambs	112.92
Nailing Fin	
***Note: This configuration meets a minimum structural performance of DP 20 through either physical testing or calculations in accordance with AAMA 450 and building code requirements. Mull certification ratings may vary from individual unit certification ratings. Reference the mulling chapter of the ADM for additional information.	
***Note: Unit Availability and Price is Subject to Change	

Line #7	Mark Unit: Living	Net Price:		1,937.32
Qty: 1		Ext. Net Price:	USD	1,937.32



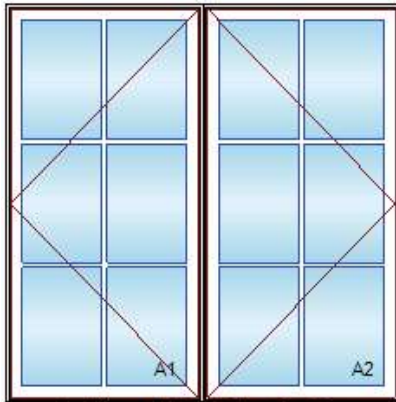
As Viewed From The Exterior

Entered As: CN
MO 36 1/2" X 71 3/8"
CN 3672
FS 36" X 71 1/8"
RO 37" X 71 5/8"
Egress Information
Width: 28 57/64" Height: 66 1/64"
Net Clear Opening: 13.24 SqFt
Performance Information
U-Factor: 0.3
Solar Heat Gain Coefficient: 0.26
Visible Light Transmittance: 0.44
Condensation Resistance: 58
CPD Number: MAR-N-342-40342-00001
Paint Specification
Clad Exterior Color: AAMA 2605

Ebony Clad Exterior	
Primed Pine Interior	44.55
Ultimate Casement - Right Hand	1,091.57
CN 3672	
Rough Opening 37" X 71 5/8"	
Frame Size 36" X 71 1/8"	
Ebony Clad Sash Exterior	
Primed Pine Sash Interior	
IG - 3/4"	391.00
Tempered Low E2 w/Argon	
Black Perimeter and Spacer Bar	
7/8" SDL - With Spacer Bar - Black	325.70
Rectangular - Special Cut 2W3H	
Ebony Clad Ext - Primed Pine Int	
Putty Exterior Glazing Profile	
Ogee Interior Glazing Profile	
Standard Bottom Rail	
Black Weather Strip	
White Folding Handle	
***Handles/Covers Ship Loose	
White Multi - Point Lock	
Extruded Aluminum Screen	
White Surround	
Bright View Mesh	
***Screen/Combo Ship Loose	
6 9/16" Jambs	84.50
Nailing Fin	
***Note: Unit Availability and Price is Subject to Change	

Line #8	Mark Unit: Powder	Net Price:		3,858.51
Qty: 1		Ext. Net Price:	USD	3,858.51

Ebony Clad Exterior	
Primed Pine Interior	89.11
2W1H - Rectangle Assembly	
Assembly Rough Opening	



As Viewed From The Exterior

Entered As: Size by Units

MO 72 1/2" X 71 3/8"

FS 72" X 71 1/8"

RO 73" X 71 5/8"

Egress Information A1, A2

Width: 28 57/64" Height: 66 1/64"

Net Clear Opening: 13.24 SqFt

Performance Information A1, A2

U-Factor: 0.3

Solar Heat Gain Coefficient: 0.26

Visible Light Transmittance: 0.44

Condensation Resistance: 58

CPD Number: MAR-N-342-40342-00001

Performance Information OA

Paint Specification

Clad Exterior Color: AAMA 2605

73" X 71 5/8"

Unit: A1 1,091.57

Ultimate Casement - Left Hand

CN 3672

Rough Opening 37" X 71 5/8"

Frame Size 36" X 71 1/8"

Ebony Clad Sash Exterior

Primed Pine Sash Interior

IG - 3/4"

Tempered Low E2 w/Argon

Black Perimeter and Spacer Bar

7/8" SDL - With Spacer Bar - Black 325.70

Rectangular - Special Cut 2W3H

Ebony Clad Ext - Primed Pine Int

Putty Exterior Glazing Profile

Ogee Interior Glazing Profile

Standard Bottom Rail

Black Weather Strip

White Folding Handle

***Handles/Covers Ship Loose

White Multi - Point Lock

Extruded Aluminum Screen

White Surround

Bright View Mesh

***Screen/Combo Ship Loose

Unit: A2 1,091.57

Ultimate Casement - Right Hand

CN 3672

Rough Opening 37" X 71 5/8"

Frame Size 36" X 71 1/8"

Ebony Clad Sash Exterior

Primed Pine Sash Interior

IG - 3/4"

Tempered Low E2 w/Argon

Black Perimeter and Spacer Bar

7/8" SDL - With Spacer Bar - Black 325.70

Rectangular - Special Cut 2W3H

Ebony Clad Ext - Primed Pine Int

Putty Exterior Glazing Profile

Ogee Interior Glazing Profile

Standard Bottom Rail

Black Weather Strip

White Folding Handle

***Handles/Covers Ship Loose

White Multi - Point Lock

Extruded Aluminum Screen

White Surround

Bright View Mesh

***Screen/Combo Ship Loose

Standard Mull Charge 39.94

6 9/16" Jamb 112.92

Nailing Fin

***Note: This configuration meets a minimum structural performance of DP 20 through either physical testing or calculations in accordance with AAMA 450 and building code requirements. Mull certification ratings may vary from individual unit certification ratings. Reference the mulling chapter of the ADM for additional information.

***Note: Unit Availability and Price is Subject to Change

Line #9	Mark Unit: Storage	Net Price:		1,802.12
Qty: 1		Ext. Net Price:	USD	1,802.12

Ebony Clad Exterior

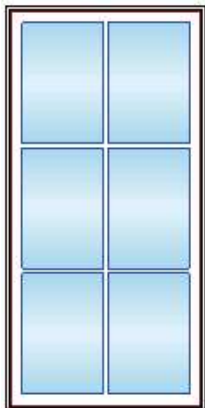
Primed Pine Interior 44.55

Ultimate Casement - Stationary 956.37

CN 3672

Rough Opening 37" X 71 5/8"

Frame Size 36" X 71 1/8"

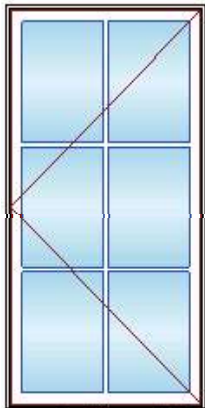


As Viewed From The Exterior

Entered As: CN
MO 36 1/2" X 71 3/8"
CN 3672
FS 36" X 71 1/8"
RO 37" X 71 5/8"
Egress Information
No Egress Information available.
Performance Information
U-Factor: 0.3
Solar Heat Gain Coefficient: 0.26
Visible Light Transmittance: 0.44
Condensation Resistance: 58
CPD Number: MAR-N-342-40342-00001
Paint Specification
Clad Exterior Color: AAMA 2605

Ebony Clad Sash Exterior
Primed Pine Sash Interior
IG - 3/4" 391.00
Tempered Low E2 w/Argon
Black Perimeter and Spacer Bar
7/8" SDL - With Spacer Bar - Black 325.70
Rectangular - Special Cut 2W3H
Ebony Clad Ext - Primed Pine Int
Putty Exterior Glazing Profile
Ogee Interior Glazing Profile
Standard Bottom Rail
Black Weather Strip
Solid Wood Covers
6 9/16" Jambs 84.50
Nailing Fin
***Note: Unit Availability and Price is Subject to Change

Line #10	Mark Unit: Primary Bath	Net Price:		1,937.32
Qty: 1		Ext. Net Price:	USD	1,937.32



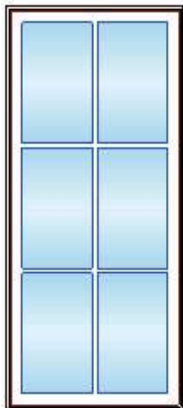
As Viewed From The Exterior

Entered As: CN
MO 36 1/2" X 71 3/8"
CN 3672
FS 36" X 71 1/8"
RO 37" X 71 5/8"
Egress Information
Width: 28 57/64" Height: 66 1/64"
Net Clear Opening: 13.24 SqFt
Performance Information
U-Factor: 0.3
Solar Heat Gain Coefficient: 0.26
Visible Light Transmittance: 0.44
Condensation Resistance: 58
CPD Number: MAR-N-342-40342-00001

Ebony Clad Exterior
Primed Pine Interior 44.55
Ultimate Casement - Left Hand 1,091.57
CN 3672
Rough Opening 37" X 71 5/8"
Frame Size 36" X 71 1/8"
Ebony Clad Sash Exterior
Primed Pine Sash Interior
IG - 3/4" 391.00
Tempered Low E2 w/Argon
Black Perimeter and Spacer Bar
7/8" SDL - With Spacer Bar - Black 325.70
Rectangular - Special Cut 2W3H
Ebony Clad Ext - Primed Pine Int
Putty Exterior Glazing Profile
Ogee Interior Glazing Profile
Standard Bottom Rail
Black Weather Strip
White Folding Handle
***Handles/Covers Ship Loose
White Multi - Point Lock
Extruded Aluminum Screen
White Surround
Bright View Mesh
***Screen/Combo Ship Loose
6 9/16" Jambs 84.50
Nailing Fin
***Note: Unit Availability and Price is Subject to Change

Paint Specification
Clad Exterior Color: AAMA 2605

Line #11	Mark Unit: Primary Closet	Net Price:		1,799.05
Qty: 1		Ext. Net Price:	USD	1,799.05

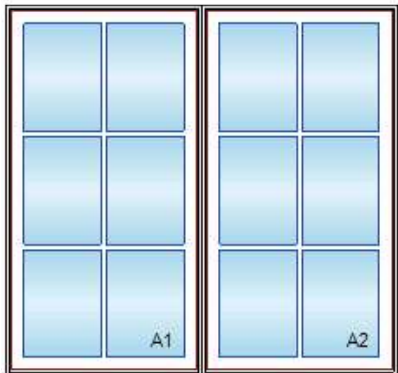


As Viewed From The Exterior

Entered As: CN
MO 32 1/2" X 71 3/8"
CN 3272
FS 32" X 71 1/8"
RO 33" X 71 5/8"
Egress Information
No Egress Information available.
Performance Information
U-Factor: 0.3
Solar Heat Gain Coefficient: 0.26
Visible Light Transmittance: 0.44
Condensation Resistance: 58
CPD Number: MAR-N-342-40342-00001
Paint Specification
Clad Exterior Color: AAMA 2605

Ebony Clad Exterior
Primed Pine Interior44.55
Ultimate Casement - Stationary 956.37
CN 3272
Rough Opening 33" X 71 5/8"
Frame Size 32" X 71 1/8"
Ebony Clad Sash Exterior
Primed Pine Sash Interior
IG - 3/4" 391.00
Tempered Low E2 w/Argon
Black Perimeter and Spacer Bar
7/8" SDL - With Spacer Bar - Black 325.70
Rectangular - Special Cut 2W3H
Ebony Clad Ext - Primed Pine Int
Putty Exterior Glazing Profile
Ogee Interior Glazing Profile
Standard Bottom Rail
Black Weather Strip
Solid Wood Covers
6 9/16" Jambs 81.43
Nailing Fin
***Note: Unit Availability and Price is Subject to Change

Line #12	Mark Unit: Garage	Net Price:		2,274.55
Qty: 1		Ext. Net Price:	USD	2,274.55



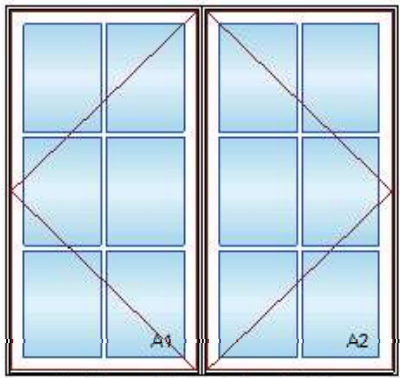
As Viewed From The Exterior

Entered As: Size by Units
MO 64 1/2" X 59 3/8"
FS 64" X 59 1/8"
RO 65" X 59 5/8"
Egress Information A1, A2
No Egress Information available.
Performance Information A1, A2

Ebony Clad Exterior
Primed Pine Interior89.11
2W1H - Rectangle Assembly
Assembly Rough Opening
65" X 59 5/8"
Unit: A1 758.95
Ultimate Casement - Stationary
CN 3260
Rough Opening 33" X 59 5/8"
Frame Size 32" X 59 1/8"
Ebony Clad Sash Exterior
Primed Pine Sash Interior
IG - 3/4"
Low E2 w/Argon
Black Perimeter and Spacer Bar
7/8" SDL - With Spacer Bar - Black 265.02
Rectangular - Special Cut 2W3H
Ebony Clad Ext - Primed Pine Int
Putty Exterior Glazing Profile
Ogee Interior Glazing Profile
Standard Bottom Rail
Black Weather Strip
Solid Wood Covers

U-Factor: 0.3	Unit: A2	758.95
Solar Heat Gain Coefficient: 0.26	Ultimate Casement - Stationary	
Visible Light Transmittance: 0.44	CN 3260	
Condensation Resistance: 58	Rough Opening 33" X 59 5/8"	
CPD Number: MAR-N-342-40342-00001	Frame Size 32" X 59 1/8"	
Performance Information OA	Ebony Clad Sash Exterior	
Paint Specification	Primed Pine Sash Interior	
Clad Exterior Color: AAMA 2605	IG - 3/4"	
	Low E2 w/Argon	
	Black Perimeter and Spacer Bar	
	7/8" SDL - With Spacer Bar - Black	265.02
	Rectangular - Special Cut 2W3H	
	Ebony Clad Ext - Primed Pine Int	
	Putty Exterior Glazing Profile	
	Ogee Interior Glazing Profile	
	Standard Bottom Rail	
	Black Weather Strip	
	Solid Wood Covers	
	Standard Mull Charge	39.94
	6 9/16" Jambs	97.56
	Nailing Fin	
	***Note: This configuration meets a minimum structural performance of DP 20 through either physical testing or calculations in accordance with AAMA 450 and building code requirements. Mull certification ratings may vary from individual unit certification ratings. Reference the mulling chapter of the ADM for additional information.	
	***Note: Unit Availability and Price is Subject to Change	

Line #13	Mark Unit: Pantry	Net Price:		2,528.05
Qty: 1		Ext. Net Price:	USD	2,528.05

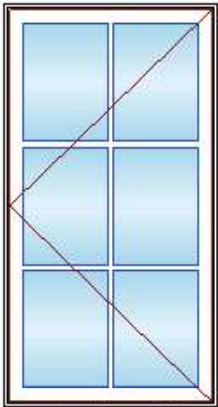


As Viewed From The Exterior

Entered As: Size by Units	Ebony Clad Exterior	
MO 64 1/2" X 59 3/8"	Primed Pine Interior	89.11
FS 64" X 59 1/8"	2W1H - Rectangle Assembly	
RO 65" X 59 5/8"	Assembly Rough Opening	
Egress Information A1, A2	65" X 59 5/8"	
Width: 24 57/64" Height: 54 1/64"	Unit: A1	885.70
Net Clear Opening: 9.34 SqFt	Ultimate Casement - Left Hand	
Performance Information A1, A2	CN 3260	
U-Factor: 0.3	Rough Opening 33" X 59 5/8"	
Solar Heat Gain Coefficient: 0.26	Frame Size 32" X 59 1/8"	
Visible Light Transmittance: 0.44	Ebony Clad Sash Exterior	
Condensation Resistance: 58	Primed Pine Sash Interior	
CPD Number: MAR-N-342-40342-00001	IG - 3/4"	
Performance Information OA	Low E2 w/Argon	
Paint Specification	Black Perimeter and Spacer Bar	
Clad Exterior Color: AAMA 2605	7/8" SDL - With Spacer Bar - Black	265.02
	Rectangular - Special Cut 2W3H	
	Ebony Clad Ext - Primed Pine Int	
	Putty Exterior Glazing Profile	
	Ogee Interior Glazing Profile	
	Standard Bottom Rail	
	Black Weather Strip	
	White Folding Handle	
	***Handles/Covers Ship Loose	
	White Multi - Point Lock	
	Extruded Aluminum Screen	
	White Surround	
	Bright View Mesh	
	***Screen/Combo Ship Loose	
	Unit: A2	885.70
	Ultimate Casement - Right Hand	
	CN 3260	
	Rough Opening 33" X 59 5/8"	
	Frame Size 32" X 59 1/8"	
	Ebony Clad Sash Exterior	
	Primed Pine Sash Interior	

IG - 3/4"
Low E2 w/Argon
Black Perimeter and Spacer Bar
7/8" SDL - With Spacer Bar - Black 265.02
Rectangular - Special Cut 2W3H
Ebony Clad Ext - Primed Pine Int
Putty Exterior Glazing Profile
Ogee Interior Glazing Profile
Standard Bottom Rail
Black Weather Strip
White Folding Handle
***Handles/Covers Ship Loose
White Multi - Point Lock
Extruded Aluminum Screen
White Surround
Bright View Mesh
***Screen/Combo Ship Loose
Standard Mull Charge 39.94
6 9/16" Jambs 97.56
Nailing Fin
***Note: This configuration meets a minimum structural performance of DP 20
through either physical testing or calculations in accordance with AAMA 450 and
building code requirements. Mull certification ratings may vary from individual
unit certification ratings. Reference the mulling chapter of the ADM for
additional information.
***Note: Unit Availability and Price is Subject to Change

Line #14	Mark Unit: Kitchen	Net Price:		1,267.48
Qty: 1		Ext. Net Price:	USD	1,267.48

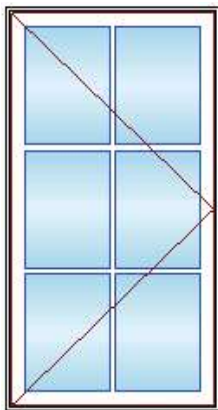


As Viewed From The Exterior

Entered As: CN
MO 32 1/2" X 59 3/8"
CN 3260
FS 32" X 59 1/8"
RO 33" X 59 5/8"
Egress Information
Width: 24 57/64" Height: 54 1/64"
Net Clear Opening: 9.34 SqFt
Performance Information
U-Factor: 0.3
Solar Heat Gain Coefficient: 0.26
Visible Light Transmittance: 0.44
Condensation Resistance: 58
CPD Number: MAR-N-342-40342-00001
Paint Specification
Clad Exterior Color: AAMA 2605

Ebony Clad Exterior
Primed Pine Interior 44.55
Ultimate Casement - Left Hand 885.70
CN 3260
Rough Opening 33" X 59 5/8"
Frame Size 32" X 59 1/8"
Ebony Clad Sash Exterior
Primed Pine Sash Interior
IG - 3/4"
Low E2 w/Argon
Black Perimeter and Spacer Bar
7/8" SDL - With Spacer Bar - Black 265.02
Rectangular - Special Cut 2W3H
Ebony Clad Ext - Primed Pine Int
Putty Exterior Glazing Profile
Ogee Interior Glazing Profile
Standard Bottom Rail
Black Weather Strip
White Folding Handle
***Handles/Covers Ship Loose
White Multi - Point Lock
Extruded Aluminum Screen
White Surround
Bright View Mesh
***Screen/Combo Ship Loose
6 9/16" Jambs 72.21
Nailing Fin
***Note: Unit Availability and Price is Subject to Change

Line #15	Mark Unit: Dining	Net Price:		1,267.48
Qty: 1		Ext. Net Price:	USD	1,267.48

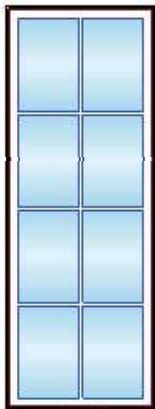


As Viewed From The Exterior

Entered As: CN
MO 32 1/2" X 59 3/8"
CN 3260
FS 32" X 59 1/8"
RO 33" X 59 5/8"
Egress Information
Width: 24 57/64" Height: 54 1/64"
Net Clear Opening: 9.34 SqFt
Performance Information
U-Factor: 0.3
Solar Heat Gain Coefficient: 0.26
Visible Light Transmittance: 0.44
Condensation Resistance: 58
CPD Number: MAR-N-342-40342-00001
Paint Specification
Clad Exterior Color: AAMA 2605

Ebony Clad Exterior
Primed Pine Interior44.55
Ultimate Casement - Right Hand885.70
CN 3260
Rough Opening 33" X 59 5/8"
Frame Size 32" X 59 1/8"
Ebony Clad Sash Exterior
Primed Pine Sash Interior
IG - 3/4"
Low E2 w/Argon
Black Perimeter and Spacer Bar
7/8" SDL - With Spacer Bar - Black265.02
Rectangular - Special Cut 2W3H
Ebony Clad Ext - Primed Pine Int
Putty Exterior Glazing Profile
Ogee Interior Glazing Profile
Standard Bottom Rail
Black Weather Strip
White Folding Handle
***Handles/Covers Ship Loose
White Multi - Point Lock
Extruded Aluminum Screen
White Surround
Bright View Mesh
***Screen/Combo Ship Loose
6 9/16" Jambos72.21
Nailing Fin
***Note: Unit Availability and Price is Subject to Change

Line #16	Mark Unit: Dining	Net Price:		2,718.54
Qty: 1		Ext. Net Price:	USD	2,718.54



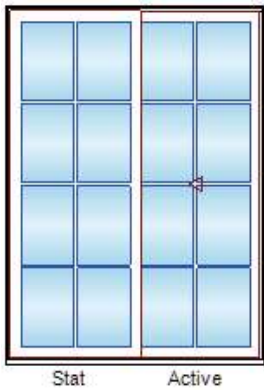
As Viewed From The Exterior

Entered As: CN
MO 36 1/2" X 95 3/8"
CN 3696
FS 36" X 95 1/8"
RO 37" X 95 5/8"
Egress Information
No Egress Information available.
Performance Information
U-Factor: 0.29
Solar Heat Gain Coefficient: 0.26
Visible Light Transmittance: 0.44
Condensation Resistance: 58

Ebony Clad Exterior
Primed Pine Interior44.55
Ultimate Casement - Stationary1,486.41
CN 3696
Rough Opening 37" X 95 5/8"
Frame Size 36" X 95 1/8"
Ebony Clad Sash Exterior
Primed Pine Sash Interior
IG - 3/4"
Tempered Low E2 w/Argon
Black Perimeter and Spacer Bar
7/8" SDL - With Spacer Bar - Black493.16
Rectangular - Special Cut 2W4H
Ebony Clad Ext - Primed Pine Int
Putty Exterior Glazing Profile
Ogee Interior Glazing Profile
Standard Bottom Rail
Black Weather Strip
Solid Wood Covers
6 9/16" Jambos103.70
Nailing Fin
***Note: Unit Availability and Price is Subject to Change

CPD Number: MAR-N-342-40329-00009
Paint Specification
Clad Exterior Color: AAMA 2605

Line #17	Mark Unit: Dining	Net Price:		6,180.70
Qty: 1		Ext. Net Price:	USD	6,180.70



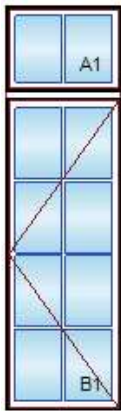
As Viewed From The Exterior

Entered As: CN
MO 73 1/8" X 98 1/4"
CN 6080
FS 72 5/8" X 98"
RO 73 5/8" X 98 1/2"
Egress Information
Width: 28 3/4" Height: 94 3/8"
Net Clear Opening: 18.84 SqFt
Performance Information
U-Factor: 0.29
Solar Heat Gain Coefficient: 0.28
Visible Light Transmittance: 0.47
Condensation Resistance: 57
CPD Number: MAR-N-484-01651-00009
Paint Specification
Clad Exterior Color: AAMA 2605

Ebony Clad Exterior	
Primed Pine Interior	119.83
Ultimate Sliding Door (3" Stiles) 4 9/16" - OX	4,281.01
CN 6080	
Rough Opening 73 5/8" X 98 1/2"	
Left Panel	
Ebony Clad Sash Exterior	
Primed Pine Sash Interior	
IG	
Tempered Low E2 w/Argon	
Black Perimeter and Spacer Bar	
7/8" SDL - With Spacer Bar - Black	424.03
Rectangular - Special Cut 2W4H	
Ebony Clad Ext - Primed Pine Int	
Putty Exterior Glazing Profile	
Ogee Interior Glazing Profile	98.33
Right Panel	
Ebony Clad Sash Exterior	
Primed Pine Sash Interior	
IG	
Tempered Low E2 w/Argon	
Black Perimeter and Spacer Bar	
7/8" SDL - With Spacer Bar - Black	424.03
Rectangular - Special Cut 2W4H	
Ebony Clad Ext - Primed Pine Int	
Putty Exterior Glazing Profile	
Ogee Interior Glazing Profile	98.33
Harp G2 Handle(s)	
Harp G2 Interior Handle(s)	
2 Point Multi-Point Lock on Active Panel	
Dark Bronze Active Exterior Handle Set on Active Panel Keyed	66.83
Dark Bronze Active Interior Handle Set on Active Panel	55.31
Keyed	
Keyed Alike - Keyed Alike Group 1	19.97
Exterior Ultimate Sliding Screen G2	487.02
Ebony Surround	
Bright View Mesh	
***Screen/Combo Ship Loose	
Ebony Performance Sill	
Black Weather Strip	
6 9/16" Jambs	106.01
Thru Jamb Installation w/ Nailing Fin	
***Note: Unit Availability and Price is Subject to Change	

Line #18	Mark Unit: Living	Net Price:		3,874.64
Qty: 1		Ext. Net Price:	USD	3,874.64

Ebony Clad Exterior	
Primed Pine Interior	89.11
1W2H - Rectangle Assembly	
Assembly Rough Opening	
37" X 123 5/8"	
Unit: A1	648.33
Ultimate Casement - Stationary	
CN 36 X Basic Frame 26"	
Rough Opening 37" X 26 1/2"	
Frame Size 36" X 26"	
Ebony Clad Sash Exterior	
Primed Pine Sash Interior	



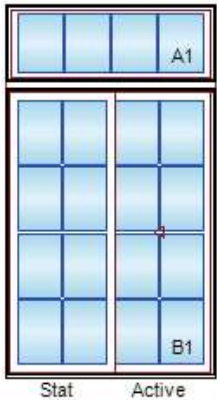
As Viewed From The Exterior

Entered As: Size by Units
MO 36 1/2" X 123 3/8"
FS 36" X 123 1/8"
RO 37" X 123 5/8"
Egress Information A1
No Egress Information available.
Egress Information B1
Width: 28 57/64" Height: 90 1/64"
Net Clear Opening: 18.06 SqFt
Performance Information A1
U-Factor: 0.3
Solar Heat Gain Coefficient: 0.26
Visible Light Transmittance: 0.44
Condensation Resistance: 58
CPD Number: MAR-N-342-40342-00001
Performance Information B1
U-Factor: 0.29
Solar Heat Gain Coefficient: 0.26
Visible Light Transmittance: 0.44
Condensation Resistance: 58
CPD Number: MAR-N-342-40329-00009
Paint Specification
Clad Exterior Color: AAMA 2605

IG - 3/4"
Low E2 w/Argon
Black Perimeter and Spacer Bar
7/8" SDL - With Spacer Bar - Black 72.98
Rectangular - Special Cut 2W1H
Ebony Clad Ext - Primed Pine Int
Putty Exterior Glazing Profile
Ogee Interior Glazing Profile
Standard Bottom Rail
Black Weather Strip
Solid Wood Covers

Unit: B1 1,650.80
Ultimate Casement - Left Hand
CN 3696
Rough Opening 37" X 95 5/8"
Frame Size 36" X 95 1/8"
Ebony Clad Sash Exterior
Primed Pine Sash Interior
IG - 3/4" 590.72
Tempered Low E2 w/Argon
Black Perimeter and Spacer Bar
7/8" SDL - With Spacer Bar - Black 493.16
Rectangular - Special Cut 2W4H
Ebony Clad Ext - Primed Pine Int
Putty Exterior Glazing Profile
Ogee Interior Glazing Profile
Standard Bottom Rail
Black Weather Strip
White Folding Handle
***Handles/Covers Ship Loose
White Multi - Point Lock
Extruded Aluminum Screen
White Surround
Bright View Mesh
***Screen/Combo Ship Loose
Horizontal Solid Space Mull 2" 164.39
Standard Mull Charge 39.94
6 9/16" Jamb 125.21
Nailing Fin
***Note: This configuration meets a minimum structural performance of DP 20 through either physical testing or calculations in accordance with AAMA 450 and building code requirements. Mull certification ratings may vary from individual unit certification ratings. Reference the mulling chapter of the ADM for additional information.
***Note: Unit Availability and Price is Subject to Change

Line #19	Mark Unit: Living	Net Price:		8,671.87
Qty: 1		Ext. Net Price:	USD	8,671.87



As Viewed From The Exterior

Entered As: Size by Units
MO 73 1/8" X 126 1/4"

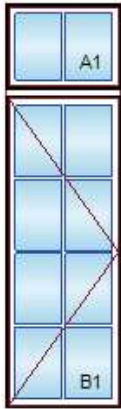
Feature Mismatch: Configuration
Ebony Clad Exterior
Primed Pine Interior 164.39
1W2H - Rectangle Assembly
Assembly Rough Opening
73 5/8" X 126 1/2"

Unit: A1 1,873.56
Ultimate Sliding Door Transom (3" Stiles) - 4 9/16" Above O
Basic Frame 72 5/8" X 26"
Rough Opening 73 5/8" X 26 1/2"
Extended Size Unit
Ebony Clad Sash Exterior
Primed Pine Sash Interior
IG
Low E2 w/Argon
Black Perimeter and Spacer Bar
7/8" SDL - With Spacer Bar - Black 146.72
Rectangular - Special Cut 4W1H
Ebony Clad Ext - Primed Pine Int

FS 72 5/8" X 126"
RO 73 5/8" X 126 1/2"
Egress Information A1
No Egress Information available.
Egress Information B1
Width: 28 3/4" Height: 94 3/8"
Net Clear Opening: 18.84 SqFt
Performance Information A1
U-Factor: 0.29
Solar Heat Gain Coefficient: 0.28
Visible Light Transmittance: 0.48
Condensation Resistance: 61
CPD Number: MAR-N-481-00954-00001
Performance Information B1
U-Factor: 0.29
Solar Heat Gain Coefficient: 0.28
Visible Light Transmittance: 0.47
Condensation Resistance: 57
CPD Number: MAR-N-484-01651-00009
Paint Specification
Clad Exterior Color: AAMA 2605

Putty Exterior Glazing Profile	
Ogee Interior Glazing Profile	39.94
Unit: B1	4,281.01
Ultimate Sliding Door (3" Stiles) 4 9/16" - OX	
CN 6080	
Rough Opening 73 5/8" X 98 1/2"	
**Operator Panels Ship Separate	
Left Panel	
Ebony Clad Sash Exterior	
Primed Pine Sash Interior	
IG	
Tempered Low E2 w/Argon	
Black Perimeter and Spacer Bar	
7/8" SDL - With Spacer Bar - Black	424.03
Rectangular - Special Cut 2W4H	
Ebony Clad Ext - Primed Pine Int	
Putty Exterior Glazing Profile	
Ogee Interior Glazing Profile	98.33
Right Panel	
Ebony Clad Sash Exterior	
Primed Pine Sash Interior	
IG	
Tempered Low E2 w/Argon	
Black Perimeter and Spacer Bar	
7/8" SDL - With Spacer Bar - Black	424.03
Rectangular - Special Cut 2W4H	
Ebony Clad Ext - Primed Pine Int	
Putty Exterior Glazing Profile	
Ogee Interior Glazing Profile	98.33
Harp G2 Handle(s)	
Harp G2 Interior Handle(s)	
2 Point Multi-Point Lock on Active Panel	
Dark Bronze Active Exterior Handle Set on Active Panel Keyed	66.83
Dark Bronze Active Interior Handle Set on Active Panel	55.31
Keyed	
Keyed Alike - Keyed Alike Group 1	19.97
Exterior Ultimate Sliding Screen G2	487.02
Ebony Surround	
Bright View Mesh	
***Screen/Combo Ship Loose	
Ebony Performance Sill	
Black Weather Strip	
Horizontal Structural Mull 2"	324.17
Standard Mull Charge	168.23
4 9/16" Jambs	
Thru Jamb Installation w/ Nailing Fin	
***Note: Unit Availability and Price is Subject to Change	

Line #20	Mark Unit: Living	Net Price:		3,874.64
Qty: 1		Ext. Net Price:	USD	3,874.64

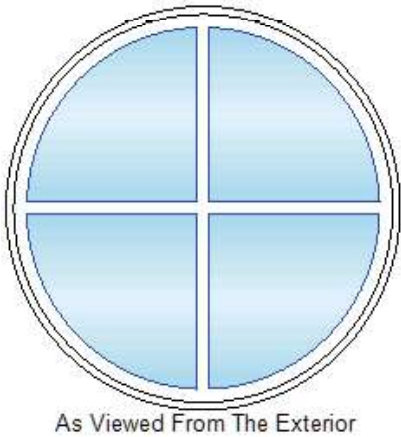


As Viewed From The Exterior

Ebony Clad Exterior	
Primed Pine Interior	89.11
1W2H - Rectangle Assembly	
Assembly Rough Opening	
37" X 123 5/8"	
Unit: A1	648.33
Ultimate Casement - Stationary	
CN 36 X Basic Frame 26"	
Rough Opening 37" X 26 1/2"	
Frame Size 36" X 26"	
Ebony Clad Sash Exterior	
Primed Pine Sash Interior	
IG - 3/4"	
Low E2 w/Argon	
Black Perimeter and Spacer Bar	
7/8" SDL - With Spacer Bar - Black	72.98
Rectangular - Special Cut 2W1H	

Entered As: Size by Units MO 36 1/2" X 123 3/8" FS 36" X 123 1/8" RO 37" X 123 5/8" Egress Information A1 No Egress Information available. Egress Information B1 Width: 28 57/64" Height: 90 1/64" Net Clear Opening: 18.06 SqFt Performance Information A1 U-Factor: 0.3 Solar Heat Gain Coefficient: 0.26 Visible Light Transmittance: 0.44 Condensation Resistance: 58 CPD Number: MAR-N-342-40342-00001 Performance Information B1 U-Factor: 0.29 Solar Heat Gain Coefficient: 0.26 Visible Light Transmittance: 0.44 Condensation Resistance: 58 CPD Number: MAR-N-342-40329-00009 Paint Specification Clad Exterior Color: AAMA 2605	Ebony Clad Ext - Primed Pine Int Putty Exterior Glazing Profile Ogee Interior Glazing Profile Standard Bottom Rail Black Weather Strip Solid Wood Covers Unit: B1, 1,650.80 Ultimate Casement - Right Hand CN 3696 Rough Opening 37" X 95 5/8" Frame Size 36" X 95 1/8" Ebony Clad Sash Exterior Primed Pine Sash Interior IG - 3/4" 590.72 Tempered Low E2 w/Argon Black Perimeter and Spacer Bar 7/8" SDL - With Spacer Bar - Black 493.16 Rectangular - Special Cut 2W4H Ebony Clad Ext - Primed Pine Int Putty Exterior Glazing Profile Ogee Interior Glazing Profile Standard Bottom Rail Black Weather Strip White Folding Handle ***Handles/Covers Ship Loose White Multi - Point Lock Extruded Aluminum Screen White Surround Bright View Mesh ***Screen/Combo Ship Loose Horizontal Solid Space Mull 2" 164.39 Standard Mull Charge 39.94 6 9/16" Jambes 125.21 Nailing Fin ***Note: This configuration meets a minimum structural performance of DP 20 through either physical testing or calculations in accordance with AAMA 450 and building code requirements. Mull certification ratings may vary from individual unit certification ratings. Reference the mulling chapter of the ADM for additional information. ***Note: Unit Availability and Price is Subject to Change
--	--

Line #21	Mark Unit: Living	Net Price:		4,821.02
Qty: 1		Ext. Net Price:	USD	4,821.02



Entered As: FS MO 30 1/2" X 30 1/2" FS 30" X 30" RO 31" X 31" Egress Information No Egress Information available.	Ebony Clad Exterior Primed Pine Interior 44.55 Ultimate Direct Glaze Round Top - RT27 3,968.36 Frame Size 30" X 30" Rough Opening 31" X 31" IG Low E2 w/Argon Black Perimeter and Spacer Bar 7/8" SDL - With Spacer Bar - Black 236.60 Rectangular - Special Cut 2W2H 4 Rect Lites Ebony Clad Ext - Primed Pine Int W1144 Interior Trim Primed Pine 455.52 6 9/16" Jambes 115.99 Nailing Fin ***Note: Unit Availability and Price is Subject to Change
--	---

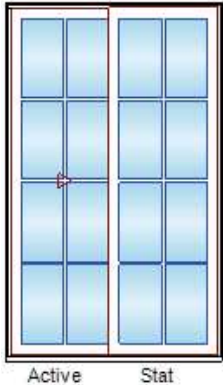
Performance Information

U-Factor: 0.29
Solar Heat Gain Coefficient: 0.33
Visible Light Transmittance: 0.57
Condensation Resistance: 53
CPD Number: MAR-N-420-10628-00001

Paint Specification

Clad Exterior Color: AAMA 2605

Line #22	Mark Unit: Sunroom Entry	Net Price:		5,776.63
Qty: 1		Ext. Net Price:	USD	5,776.63



As Viewed From The Exterior

Entered As: CN

MO 61 1/8" X 98 1/4"

CN 5080

FS 60 5/8" X 98"

RO 61 5/8" X 98 1/2"

Egress Information

Width: 22 3/4" Height: 94 3/8"

Net Clear Opening: 14.91 SqFt

Performance Information

U-Factor: 0.29
Solar Heat Gain Coefficient: 0.28
Visible Light Transmittance: 0.47
Condensation Resistance: 57
CPD Number: MAR-N-484-01651-00009

Paint Specification

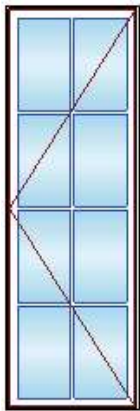
Clad Exterior Color: AAMA 2605

Ebony Clad Exterior	
Primed Pine Interior	119.83
Ultimate Sliding Door (3" Stiles) 4 9/16" - XO	3,892.31
CN 5080	
Rough Opening 61 5/8" X 98 1/2"	
Left Panel	
Ebony Clad Sash Exterior	
Primed Pine Sash Interior	
IG	
Tempered Low E2 w/Argon	
Black Perimeter and Spacer Bar	
7/8" SDL - With Spacer Bar - Black	424.03
Rectangular - Special Cut 2W4H	
Ebony Clad Ext - Primed Pine Int	
Putty Exterior Glazing Profile	
Ogee Interior Glazing Profile	98.33
Right Panel	
Ebony Clad Sash Exterior	
Primed Pine Sash Interior	
IG	
Tempered Low E2 w/Argon	
Black Perimeter and Spacer Bar	
7/8" SDL - With Spacer Bar - Black	424.03
Rectangular - Special Cut 2W4H	
Ebony Clad Ext - Primed Pine Int	
Putty Exterior Glazing Profile	
Ogee Interior Glazing Profile	98.33
Harp G2 Handle(s)	
Harp G2 Interior Handle(s)	
2 Point Multi-Point Lock on Active Panel	
Dark Bronze Active Exterior Handle Set on Active Panel Keyed	66.83
Dark Bronze Active Interior Handle Set on Active Panel	55.31
Keyed	
Keyed Alike - Keyed Alike Group 1	19.97
Exterior Ultimate Sliding Screen G2	477.03
Ebony Surround	
Bright View Mesh	
***Screen/Combo Ship Loose	
Ebony Performance Sill	
Black Weather Strip	
6 9/16" Jambs	100.63
Thru Jamb Installation w/ Nailing Fin	

***Note: Unit Availability and Price is Subject to Change

Line #23	Mark Unit: Sun Room	Net Price:		2,737.75
Qty: 1		Ext. Net Price:	USD	2,737.75

Ebony Clad Exterior	
Primed Pine Interior	44.55
Ultimate Casement - Left Hand	1,527.89
CN 3296	
Rough Opening 33" X 95 5/8"	
Frame Size 32" X 95 1/8"	
Ebony Clad Sash Exterior	
Primed Pine Sash Interior	



As Viewed From The Exterior

Entered As: CN
MO 32 1/2" X 95 3/8"
CN 3296
FS 32" X 95 1/8"
RO 33" X 95 5/8"

Egress Information
Width: 24 57/64" Height: 90 1/64"
Net Clear Opening: 15.56 SqFt
Sash Limiters and Window Opening Control
Devices, when engaged, may reduce the egress
opening dimensions of windows.

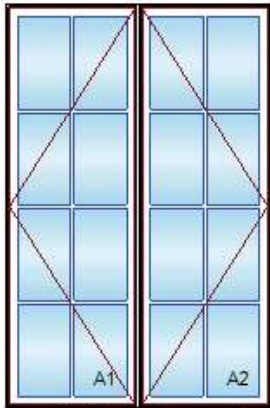
Performance Information
U-Factor: 0.29
Solar Heat Gain Coefficient: 0.26
Visible Light Transmittance: 0.44
Condensation Resistance: 58
CPD Number: MAR-N-342-40329-00009

Paint Specification
Clad Exterior Color: AAMA 2605

IG - 3/4" 543.86
Tempered Low E2 w/Argon
Black Perimeter and Spacer Bar
7/8" SDL - With Spacer Bar - Black 457.83
Rectangular - Special Cut 2W4H
Ebony Clad Ext - Primed Pine Int
Putty Exterior Glazing Profile
Ogee Interior Glazing Profile
Standard Bottom Rail
Black Weather Strip
White Folding Handle
***Handles/Covers Ship Loose
White Multi - Point Lock
Sash Limiter - 3" Travel 62.99
Extruded Aluminum Screen
White Surround
Bright View Mesh
***Screen/Combo Ship Loose
6 9/16" Jambos 100.63
Nailing Fin

***Note: Unit Availability and Price is Subject to Change

Line #24	Mark Unit: Sunroom	Net Price:		5,439.40
Qty: 1		Ext. Net Price:	USD	5,439.40



As Viewed From The Exterior

Entered As: Size by Units
MO 64 1/2" X 95 3/8"
FS 64" X 95 1/8"
RO 65" X 95 5/8"
Egress Information A1, A2
Width: 24 57/64" Height: 90 1/64"
Net Clear Opening: 15.56 SqFt
Sash Limiters and Window Opening Control
Devices, when engaged, may reduce the egress
opening dimensions of windows.

Ebony Clad Exterior
Primed Pine Interior 89.11
2W1H - Rectangle Assembly
Assembly Rough Opening
65" X 95 5/8"
Unit: A1 1,527.89
Ultimate Casement - Left Hand
CN 3296
Rough Opening 33" X 95 5/8"
Frame Size 32" X 95 1/8"
Ebony Clad Sash Exterior
Primed Pine Sash Interior
IG - 3/4" 543.86
Tempered Low E2 w/Argon
Black Perimeter and Spacer Bar
7/8" SDL - With Spacer Bar - Black 457.83
Rectangular - Special Cut 2W4H
Ebony Clad Ext - Primed Pine Int
Putty Exterior Glazing Profile
Ogee Interior Glazing Profile
Standard Bottom Rail
Black Weather Strip
White Folding Handle
***Handles/Covers Ship Loose
White Multi - Point Lock
Sash Limiter - 3" Travel 62.99
Extruded Aluminum Screen

Performance Information A1, A2

U-Factor: 0.29
Solar Heat Gain Coefficient: 0.26
Visible Light Transmittance: 0.44
Condensation Resistance: 58
CPD Number: MAR-N-342-40329-00009

Performance Information OA

Paint Specification

Clad Exterior Color: AAMA 2605

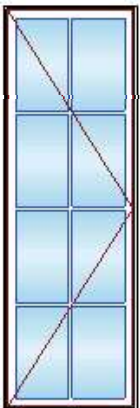
White Surround
Bright View Mesh
***Screen/Combo Ship Loose

Unit: A2 1,527.89
Ultimate Casement - Right Hand
CN 3296
Rough Opening 33" X 95 5/8"
Frame Size 32" X 95 1/8"
Ebony Clad Sash Exterior
Primed Pine Sash Interior
IG - 3/4" 543.86
Tempered Low E2 w/Argon
Black Perimeter and Spacer Bar
7/8" SDL - With Spacer Bar - Black 457.83
Rectangular - Special Cut 2W4H
Ebony Clad Ext - Primed Pine Int
Putty Exterior Glazing Profile
Ogee Interior Glazing Profile
Standard Bottom Rail
Black Weather Strip
White Folding Handle
***Handles/Covers Ship Loose
White Multi - Point Lock
Sash Limiter - 3" Travel 62.99
Extruded Aluminum Screen
White Surround
Bright View Mesh
***Screen/Combo Ship Loose
Standard Mull Charge 39.94
6 9/16" Jambs 125.21
Nailing Fin

***Note: This configuration meets a minimum structural performance of DP 20 through either physical testing or calculations in accordance with AAMA 450 and building code requirements. Mull certification ratings may vary from individual unit certification ratings. Reference the mulling chapter of the ADM for additional information.

***Note: Unit Availability and Price is Subject to Change

Line #25	Mark Unit: Sun Room	Net Price:		2,737.75
Qty: 1		Ext. Net Price:	USD	2,737.75



As Viewed From The Exterior

Entered As: CN
MO 32 1/2" X 95 3/8"
CN 3296
FS 32" X 95 1/8"
RO 33" X 95 5/8"

Egress Information

Width: 24 57/64" Height: 90 1/64"
Net Clear Opening: 15.56 SqFt
Sash Limiters and Window Opening Control

Ebony Clad Exterior
Primed Pine Interior 44.55
Ultimate Casement - Right Hand 1,527.89
CN 3296
Rough Opening 33" X 95 5/8"
Frame Size 32" X 95 1/8"
Ebony Clad Sash Exterior
Primed Pine Sash Interior
IG - 3/4" 543.86
Tempered Low E2 w/Argon
Black Perimeter and Spacer Bar
7/8" SDL - With Spacer Bar - Black 457.83
Rectangular - Special Cut 2W4H
Ebony Clad Ext - Primed Pine Int
Putty Exterior Glazing Profile
Ogee Interior Glazing Profile
Standard Bottom Rail
Black Weather Strip
White Folding Handle
***Handles/Covers Ship Loose
White Multi - Point Lock
Sash Limiter - 3" Travel 62.99
Extruded Aluminum Screen
White Surround
Bright View Mesh
***Screen/Combo Ship Loose
6 9/16" Jambs 100.63
Nailing Fin

Devices, when engaged, may reduce the egress opening dimensions of windows.

***Note: Unit Availability and Price is Subject to Change

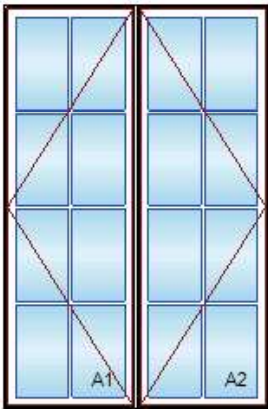
Performance Information

U-Factor: 0.29
Solar Heat Gain Coefficient: 0.26
Visible Light Transmittance: 0.44
Condensation Resistance: 58
CPD Number: MAR-N-342-40329-00009

Paint Specification

Clad Exterior Color: AAMA 2605

Line #26	Mark Unit: Sunroom	Net Price:		5,439.40
Qty: 3		Ext. Net Price:	USD	16,318.20



As Viewed From The Exterior

Entered As: Size by Units

MO 64 1/2" X 95 3/8"

FS 64" X 95 1/8"

RO 65" X 95 5/8"

Egress Information A1, A2

Width: 24 57/64" Height: 90 1/64"

Net Clear Opening: 15.56 SqFt

Sash Limiters and Window Opening Control

Devices, when engaged, may reduce the egress opening dimensions of windows.

Performance Information A1, A2

U-Factor: 0.29
Solar Heat Gain Coefficient: 0.26
Visible Light Transmittance: 0.44
Condensation Resistance: 58
CPD Number: MAR-N-342-40329-00009

Performance Information OA

Paint Specification

Clad Exterior Color: AAMA 2605

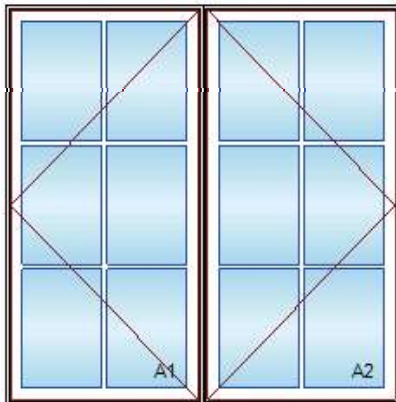
Ebony Clad Exterior
Primed Pine Interior89.11
2W1H - Rectangle Assembly
Assembly Rough Opening
65" X 95 5/8"

Unit: A1 1,527.89
Ultimate Casement - Left Hand
CN 3296
Rough Opening 33" X 95 5/8"
Frame Size 32" X 95 1/8"
Ebony Clad Sash Exterior
Primed Pine Sash Interior
IG - 3/4" 543.86
Tempered Low E2 w/Argon
Black Perimeter and Spacer Bar
7/8" SDL - With Spacer Bar - Black 457.83
Rectangular - Special Cut 2W4H
Ebony Clad Ext - Primed Pine Int
Putty Exterior Glazing Profile
Ogee Interior Glazing Profile
Standard Bottom Rail
Black Weather Strip
White Folding Handle
***Handles/Covers Ship Loose
White Multi - Point Lock
Sash Limiter - 3" Travel 62.99
Extruded Aluminum Screen
White Surround
Bright View Mesh
***Screen/Combo Ship Loose

Unit: A2 1,527.89
Ultimate Casement - Right Hand
CN 3296
Rough Opening 33" X 95 5/8"
Frame Size 32" X 95 1/8"
Ebony Clad Sash Exterior
Primed Pine Sash Interior
IG - 3/4" 543.86
Tempered Low E2 w/Argon
Black Perimeter and Spacer Bar
7/8" SDL - With Spacer Bar - Black 457.83
Rectangular - Special Cut 2W4H
Ebony Clad Ext - Primed Pine Int
Putty Exterior Glazing Profile
Ogee Interior Glazing Profile
Standard Bottom Rail
Black Weather Strip
White Folding Handle
***Handles/Covers Ship Loose
White Multi - Point Lock
Sash Limiter - 3" Travel 62.99
Extruded Aluminum Screen
White Surround

Bright View Mesh
***Screen/Combo Ship Loose
Standard Mull Charge 39.94
6 9/16" Jambs 125.21
Nailing Fin
***Note: This configuration meets a minimum structural performance of DP 20
through either physical testing or calculations in accordance with AAMA 450 and
building code requirements. Mull certification ratings may vary from individual
unit certification ratings. Reference the mulling chapter of the ADM for
additional information.
***Note: Unit Availability and Price is Subject to Change

Line #27	Mark Unit: Primary Bedroom	Net Price:		3,858.51
Qty: 1		Ext. Net Price:	USD	3,858.51



Entered As: Size by Units
MO 72 1/2" X 71 3/8"
FS 72" X 71 1/8"
RO 73" X 71 5/8"
Egress Information A1, A2
Width: 28 57/64" Height: 66 1/64"
Net Clear Opening: 13.24 SqFt
Performance Information A1, A2
U-Factor: 0.3
Solar Heat Gain Coefficient: 0.26
Visible Light Transmittance: 0.44
Condensation Resistance: 58
CPD Number: MAR-N-342-40342-00001
Performance Information OA
Paint Specification
Clad Exterior Color: AAMA 2605

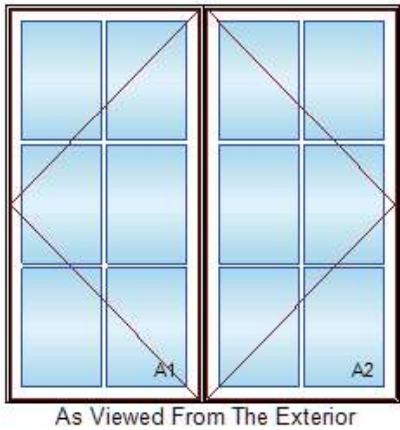
Ebony Clad Exterior
Primed Pine Interior 89.11
2W1H - Rectangle Assembly
Assembly Rough Opening
73" X 71 5/8"

Unit: A1 1,091.57
Ultimate Casement - Left Hand
CN 3672
Rough Opening 37" X 71 5/8"
Frame Size 36" X 71 1/8"
Ebony Clad Sash Exterior
Primed Pine Sash Interior
IG - 3/4" 391.00
Tempered Low E2 w/Argon
Black Perimeter and Spacer Bar
7/8" SDL - With Spacer Bar - Black 325.70
Rectangular - Special Cut 2W3H
Ebony Clad Ext - Primed Pine Int
Putty Exterior Glazing Profile
Ogee Interior Glazing Profile
Standard Bottom Rail
Black Weather Strip
White Folding Handle
***Handles/Covers Ship Loose
White Multi - Point Lock
Extruded Aluminum Screen
White Surround
Bright View Mesh
***Screen/Combo Ship Loose

Unit: A2 1,091.57
Ultimate Casement - Right Hand
CN 3672
Rough Opening 37" X 71 5/8"
Frame Size 36" X 71 1/8"
Ebony Clad Sash Exterior
Primed Pine Sash Interior
IG - 3/4" 391.00
Tempered Low E2 w/Argon
Black Perimeter and Spacer Bar
7/8" SDL - With Spacer Bar - Black 325.70
Rectangular - Special Cut 2W3H
Ebony Clad Ext - Primed Pine Int
Putty Exterior Glazing Profile
Ogee Interior Glazing Profile
Standard Bottom Rail
Black Weather Strip
White Folding Handle
***Handles/Covers Ship Loose
White Multi - Point Lock
Extruded Aluminum Screen
White Surround
Bright View Mesh

***Screen/Combo Ship Loose
Standard Mull Charge39.94
6 9/16" Jamb's112.92
Nailing Fin
***Note: This configuration meets a minimum structural performance of DP 20 through either physical testing or calculations in accordance with AAMA 450 and building code requirements. Mull certification ratings may vary from individual unit certification ratings. Reference the mulling chapter of the ADM for additional information.
***Note: Unit Availability and Price is Subject to Change

Line #28	Mark Unit: Primary Bath	Net Price:	3,858.51
Qty: 1		Ext. Net Price:	USD 3,858.51



Entered As: Size by Units
MO 72 1/2" X 71 3/8"
FS 72" X 71 1/8"
RO 73" X 71 5/8"
Egress Information A1, A2
Width: 28 57/64" Height: 66 1/64"
Net Clear Opening: 13.24 SqFt
Performance Information A1, A2
U-Factor: 0.3
Solar Heat Gain Coefficient: 0.26
Visible Light Transmittance: 0.44
Condensation Resistance: 58
CPD Number: MAR-N-342-40342-00001
Performance Information OA
Paint Specification
Clad Exterior Color: AAMA 2605

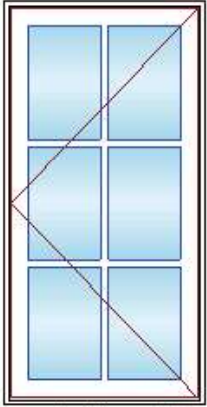
Ebony Clad Exterior
Primed Pine Interior89.11
2W1H - Rectangle Assembly
Assembly Rough Opening
73" X 71 5/8"
Unit: A1 1,091.57
Ultimate Casement - Left Hand
CN 3672
Rough Opening 37" X 71 5/8"
Frame Size 36" X 71 1/8"
Ebony Clad Sash Exterior
Primed Pine Sash Interior
IG - 3/4" 391.00
Tempered Low E2 w/Argon
Black Perimeter and Spacer Bar
7/8" SDL - With Spacer Bar - Black325.70
Rectangular - Special Cut 2W3H
Ebony Clad Ext - Primed Pine Int
Putty Exterior Glazing Profile
Ogee Interior Glazing Profile
Standard Bottom Rail
Black Weather Strip
White Folding Handle
***Handles/Covers Ship Loose
White Multi - Point Lock
Extruded Aluminum Screen
White Surround
Bright View Mesh
***Screen/Combo Ship Loose
Unit: A2 1,091.57
Ultimate Casement - Right Hand
CN 3672
Rough Opening 37" X 71 5/8"
Frame Size 36" X 71 1/8"
Ebony Clad Sash Exterior
Primed Pine Sash Interior
IG - 3/4" 391.00
Tempered Low E2 w/Argon
Black Perimeter and Spacer Bar
7/8" SDL - With Spacer Bar - Black325.70
Rectangular - Special Cut 2W3H
Ebony Clad Ext - Primed Pine Int
Putty Exterior Glazing Profile
Ogee Interior Glazing Profile
Standard Bottom Rail
Black Weather Strip
White Folding Handle
***Handles/Covers Ship Loose
White Multi - Point Lock
Extruded Aluminum Screen
White Surround
Bright View Mesh
***Screen/Combo Ship Loose
Standard Mull Charge39.94

6 9/16" Jambas 112.92
Nailing Fin

***Note: This configuration meets a minimum structural performance of DP 20 through either physical testing or calculations in accordance with AAMA 450 and building code requirements. Mull certification ratings may vary from individual unit certification ratings. Reference the mulling chapter of the ADM for additional information.

***Note: Unit Availability and Price is Subject to Change

Line #29	Mark Unit: Office Front / Rear	Net Price:		1,181.43
Qty: 2		Ext. Net Price:	USD	2,362.86



As Viewed From The Exterior

Entered As: CN
MO 24 1/2" X 47 3/8"
CN 2448
FS 24" X 47 1/8"
RO 25" X 47 5/8"

Egress Information

Width: 16 57/64" Height: 42 1/64"
Net Clear Opening: 4.93 SqFt

Performance Information

U-Factor: 0.3
Solar Heat Gain Coefficient: 0.26
Visible Light Transmittance: 0.44
Condensation Resistance: 58
CPD Number: MAR-N-342-40342-00001

Paint Specification

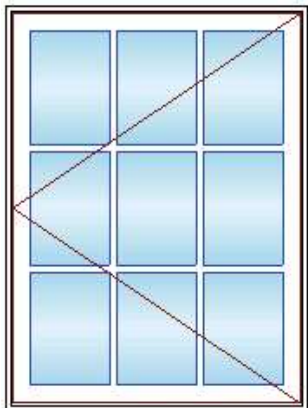
Clad Exterior Color: AAMA 2605

Ebony Clad Exterior
Primed Pine Interior 44.55
Ultimate Casement - Left Hand 685.21
CN 2448
Rough Opening 25" X 47 5/8"
Frame Size 24" X 47 1/8"
Ebony Clad Sash Exterior
Primed Pine Sash Interior
IG - 3/4" 191.27
Tempered Low E2 w/Argon
Black Perimeter and Spacer Bar
7/8" SDL - With Spacer Bar - Black 203.56
Rectangular - Standard Cut 2W3H
Ebony Clad Ext - Primed Pine Int
Putty Exterior Glazing Profile
Ogee Interior Glazing Profile
Standard Bottom Rail
Black Weather Strip
White Folding Handle
***Handles/Covers Ship Loose
White Multi - Point Lock
Aluminum Screen
White Surround
Bright View Mesh
***Screen/Combo Ship Loose
6 9/16" Jambas 56.84
Nailing Fin

***Note: Unit Availability and Price is Subject to Change

Line #30	Mark Unit: Office Front / Rear	Net Price:		1,381.16
Qty: 2		Ext. Net Price:	USD	2,762.32

Ebony Clad Exterior
Primed Pine Interior 44.55
Ultimate Casement - Left Hand 788.14
CN 3648
Rough Opening 37" X 47 5/8"
Frame Size 36" X 47 1/8"
Ebony Clad Sash Exterior
Primed Pine Sash Interior
IG - 3/4" 248.12
Tempered Low E2 w/Argon
Black Perimeter and Spacer Bar
7/8" SDL - With Spacer Bar - Black 234.29
Rectangular - Standard Cut 3W3H
Ebony Clad Ext - Primed Pine Int
Putty Exterior Glazing Profile
Ogee Interior Glazing Profile
Standard Bottom Rail

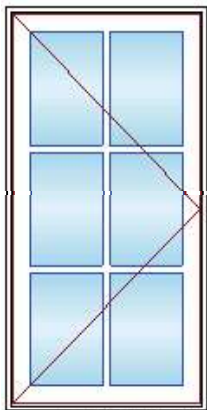


As Viewed From The Exterior

Entered As: CN
MO 36 1/2" X 47 3/8"
CN 3648
FS 36" X 47 1/8"
RO 37" X 47 5/8"
Egress Information
Width: 28 57/64" Height: 42 1/64"
Net Clear Opening: 8.43 SqFt
Performance Information
U-Factor: 0.3
Solar Heat Gain Coefficient: 0.26
Visible Light Transmittance: 0.44
Condensation Resistance: 58
CPD Number: MAR-N-342-40342-00001
Paint Specification
Clad Exterior Color: AAMA 2605

Black Weather Strip
White Folding Handle
***Handles/Covers Ship Loose
White Multi - Point Lock
Aluminum Screen
White Surround
Bright View Mesh
***Screen/Combo Ship Loose
6 9/16" Jambos 66.06
Nailing Fin
***Note: Unit Availability and Price is Subject to Change

Line #31	Mark Unit: Office Front / Rear	Net Price:		1,181.43
Qty: 2		Ext. Net Price:	USD	2,362.86



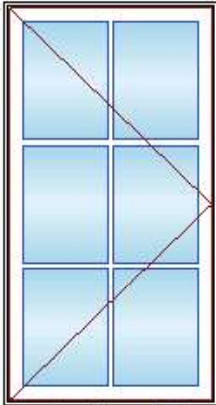
As Viewed From The Exterior

Entered As: CN
MO 24 1/2" X 47 3/8"
CN 2448
FS 24" X 47 1/8"
RO 25" X 47 5/8"
Egress Information
Width: 16 57/64" Height: 42 1/64"
Net Clear Opening: 4.93 SqFt
Performance Information
U-Factor: 0.3
Solar Heat Gain Coefficient: 0.26
Visible Light Transmittance: 0.44
Condensation Resistance: 58

Ebony Clad Exterior
Primed Pine Interior 44.55
Ultimate Casement - Right Hand 685.21
CN 2448
Rough Opening 25" X 47 5/8"
Frame Size 24" X 47 1/8"
Ebony Clad Sash Exterior
Primed Pine Sash Interior
IG - 3/4" 191.27
Tempered Low E2 w/Argon
Black Perimeter and Spacer Bar
7/8" SDL - With Spacer Bar - Black 203.56
Rectangular - Standard Cut 2W3H
Ebony Clad Ext - Primed Pine Int
Putty Exterior Glazing Profile
Ogee Interior Glazing Profile
Standard Bottom Rail
Black Weather Strip
White Folding Handle
***Handles/Covers Ship Loose
White Multi - Point Lock
Aluminum Screen
White Surround
Bright View Mesh
***Screen/Combo Ship Loose
6 9/16" Jambos 56.84
Nailing Fin
***Note: Unit Availability and Price is Subject to Change

CPD Number: MAR-N-342-40342-00001
Paint Specification
Clad Exterior Color: AAMA 2605

Line #32	Mark Unit: Bedroom	Net Price:		1,563.23
Qty: 1		Ext. Net Price:	USD	1,563.23

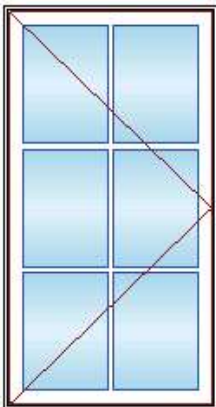


As Viewed From The Exterior

Entered As: CN
MO 32 1/2" X 59 3/8"
CN 3260
FS 32" X 59 1/8"
RO 33" X 59 5/8"
Egress Information
Width: 24 57/64" Height: 54 1/64"
Net Clear Opening: 9.34 SqFt
Performance Information
U-Factor: 0.3
Solar Heat Gain Coefficient: 0.26
Visible Light Transmittance: 0.44
Condensation Resistance: 58
CPD Number: MAR-N-342-40342-00001
Paint Specification
Clad Exterior Color: AAMA 2605

Ebony Clad Exterior
Primed Pine Interior44.55
Ultimate Casement - Right Hand885.70
CN 3260
Rough Opening 33" X 59 5/8"
Frame Size 32" X 59 1/8"
Ebony Clad Sash Exterior
Primed Pine Sash Interior
IG - 3/4"295.75
Tempered Low E2 w/Argon
Black Perimeter and Spacer Bar
7/8" SDL - With Spacer Bar - Black265.02
Rectangular - Special Cut 2W3H
Ebony Clad Ext - Primed Pine Int
Putty Exterior Glazing Profile
Ogee Interior Glazing Profile
Standard Bottom Rail
Black Weather Strip
White Folding Handle
***Handles/Covers Ship Loose
White Multi - Point Lock
Extruded Aluminum Screen
White Surround
Bright View Mesh
***Screen/Combo Ship Loose
6 9/16" Jambos72.21
Nailing Fin
*****Note: Unit Availability and Price is Subject to Change**

Line #33	Mark Unit: Guest	Net Price:		1,563.23
Qty: 1		Ext. Net Price:	USD	1,563.23



As Viewed From The Exterior

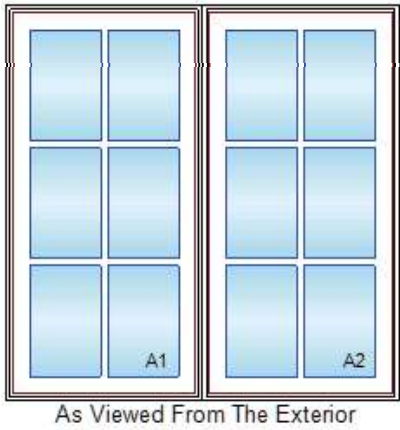
Entered As: CN
MO 32 1/2" X 59 3/8"
CN 3260
FS 32" X 59 1/8"

Ebony Clad Exterior
Primed Pine Interior44.55
Ultimate Casement - Right Hand885.70
CN 3260
Rough Opening 33" X 59 5/8"
Frame Size 32" X 59 1/8"
Ebony Clad Sash Exterior
Primed Pine Sash Interior
IG - 3/4"295.75
Tempered Low E2 w/Argon
Black Perimeter and Spacer Bar
7/8" SDL - With Spacer Bar - Black265.02
Rectangular - Special Cut 2W3H
Ebony Clad Ext - Primed Pine Int
Putty Exterior Glazing Profile
Ogee Interior Glazing Profile
Standard Bottom Rail
Black Weather Strip
White Folding Handle
***Handles/Covers Ship Loose
White Multi - Point Lock
Extruded Aluminum Screen

RO 33" X 59 5/8"
Egress Information
Width: 24 57/64" Height: 54 1/64"
Net Clear Opening: 9.34 SqFt
Performance Information
U-Factor: 0.3
Solar Heat Gain Coefficient: 0.26
Visible Light Transmittance: 0.44
Condensation Resistance: 58
CPD Number: MAR-N-342-40342-00001
Paint Specification
Clad Exterior Color: AAMA 2605

White Surround
Bright View Mesh
***Screen/Combo Ship Loose
6 9/16" Jamb's 72.21
Nailing Fin
***Note: Unit Availability and Price is Subject to Change

Line #34	Mark Unit: Office Side	Net Price:		1,748.35
Qty: 1		Ext. Net Price:	USD	1,748.35



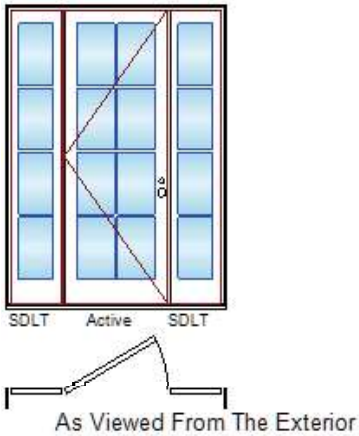
Entered As: Size by Units
MO 48 1/2" X 47 3/8"
FS 48" X 47 1/8"
RO 49" X 47 5/8"
Egress Information A1, A2
No Egress Information available.
Performance Information A1, A2
U-Factor: 0.3
Solar Heat Gain Coefficient: 0.26
Visible Light Transmittance: 0.44
Condensation Resistance: 58
CPD Number: MAR-N-342-40342-00001
Performance Information OA
Paint Specification
Clad Exterior Color: AAMA 2605

Ebony Clad Exterior
Primed Pine Interior89.11
2W1H - Rectangle Assembly
Assembly Rough Opening
49" X 47 5/8"

Unit: A1568.45
Ultimate Casement - Stationary
CN 2448
Rough Opening 25" X 47 5/8"
Frame Size 24" X 47 1/8"
Ebony Clad Sash Exterior
Primed Pine Sash Interior
IG - 3/4"
Low E2 w/Argon
Black Perimeter and Spacer Bar
7/8" SDL - With Spacer Bar - Black203.56
Rectangular - Standard Cut 2W3H
Ebony Clad Ext - Primed Pine Int
Putty Exterior Glazing Profile
Ogee Interior Glazing Profile
Standard Bottom Rail
Black Weather Strip
Solid Wood Covers

Unit: A2568.45
Ultimate Casement - Stationary
CN 2448
Rough Opening 25" X 47 5/8"
Frame Size 24" X 47 1/8"
Ebony Clad Sash Exterior
Primed Pine Sash Interior
IG - 3/4"
Low E2 w/Argon
Black Perimeter and Spacer Bar
7/8" SDL - With Spacer Bar - Black203.56
Rectangular - Standard Cut 2W3H
Ebony Clad Ext - Primed Pine Int
Putty Exterior Glazing Profile
Ogee Interior Glazing Profile
Standard Bottom Rail
Black Weather Strip
Solid Wood Covers
Standard Mull Charge39.94
6 9/16" Jamb's 75.28
Nailing Fin
***Note: This configuration meets a minimum structural performance of DP 20
through either physical testing or calculations in accordance with AAMA 450 and
building code requirements. Mull certification ratings may vary from individual
unit certification ratings. Reference the mulling chapter of the ADM for
additional information.
***Note: Unit Availability and Price is Subject to Change

Line #35	Mark Unit: Front Entry	Net Price:		8,325.41
Qty: 1		Ext. Net Price:	USD	8,325.41

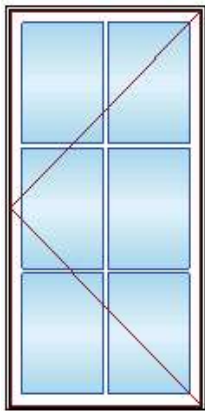


Entered As: FS x CN
MO 73 1/8" X 98 1/4"
FS 72 5/8" X 98"
RO 73 5/8" X 98 1/2"
Egress Information
Width: 32 1/16" Height: 94 3/8"
Net Clear Opening: 21.02 SqFt
Performance Information
U-Factor: 0.3
Solar Heat Gain Coefficient: 0.21
Visible Light Transmittance: 0.35
CPD Number: MAR-N-476-02976-00009
Paint Specification
Clad Exterior Color: AAMA 2605

Ebony Clad Exterior	
Primed Pine Interior	179.75
Ultimate Inswing French Door G2 6 9/16" - SLXSL Left Hand	6,822.88
Frame Size 72 5/8" X Call Number 80	
Rough Opening 73 5/8" X 98 1/2"	
Unequal Standard Panels	
Left Panel	
CN 1680	
Ebony Clad Sash Exterior	
Primed Pine Sash Interior	
IG	
Tempered Low E2 w/Argon	
Black Perimeter and Spacer Bar	
7/8" SDL - With Spacer Bar - Black	212.01
Rectangular - Special Cut 1W4H	
Ebony Clad Ext - Primed Pine Int	
Putty Exterior Glazing Profile	
Ogee Interior Glazing Profile	
Standard Bottom Rail	
Center Panel	
CN 3080	
Ebony Clad Sash Exterior	
Primed Pine Sash Interior	
IG	
Tempered Low E2 w/Argon	
Black Perimeter and Spacer Bar	
7/8" SDL - With Spacer Bar - Black	424.03
Rectangular - Special Cut 2W4H	
Ebony Clad Ext - Primed Pine Int	
Putty Exterior Glazing Profile	
Ogee Interior Glazing Profile	
Standard Bottom Rail	
Right Panel	
CN 1680	
Ebony Clad Sash Exterior	
Primed Pine Sash Interior	
IG	
Tempered Low E2 w/Argon	
Black Perimeter and Spacer Bar	
7/8" SDL - With Spacer Bar - Black	212.01
Rectangular - Special Cut 1W4H	
Ebony Clad Ext - Primed Pine Int	
Putty Exterior Glazing Profile	
Ogee Interior Glazing Profile	
Standard Bottom Rail	
Non Finger-Jointed Door Option for Secondary Surface	166.69
Traditional Lever(s)	
Multi-Point Lock on Active Panel	
Dark Bronze Active Exterior Handle Set on Active Panel Keyed	175.91
Dark Bronze Active Interior Handle Set on Active Panel	
Keyed	
Keyed Alike - Keyed Alike Group 1	19.97
Dark Bronze Adjustable Hinges 3 Per Panel	39.18
Ebony Performance Sill	
Black Weather Strip	
6 9/16" Jamb	
Thru Jamb Installation w/ AL Nailing Fin	72.98
Skid Plate Applied	
***Note: Unit Availability and Price is Subject to Change	

Line #36	Mark Unit: Owner Bedroom	Net Price:		2,000.31
Qty: 1		Ext. Net Price:	USD	2,000.31

Ebony Clad Exterior



As Viewed From The Exterior

Entered As: CN
MO 36 1/2" X 71 3/8"
CN 3672
FS 36" X 71 1/8"
RO 37" X 71 5/8"
Egress Information
Width: 28 57/64" Height: 66 1/64"
Net Clear Opening: 13.24 SqFt
Sash Limiters and Window Opening Control
Devices, when engaged, may reduce the egress
opening dimensions of windows.
Performance Information
U-Factor: 0.3
Solar Heat Gain Coefficient: 0.26
Visible Light Transmittance: 0.44
Condensation Resistance: 58
CPD Number: MAR-N-342-40342-00001
Paint Specification
Clad Exterior Color: AAMA 2605

Primed Pine Interior	44.55
Ultimate Casement - Left Hand	1,091.57
CN 3672	
Rough Opening 37" X 71 5/8"	
Frame Size 36" X 71 1/8"	
Ebony Clad Sash Exterior	
Primed Pine Sash Interior	
IG - 3/4"	391.00
Tempered Low E2 w/Argon	
Black Perimeter and Spacer Bar	
7/8" SDL - With Spacer Bar - Black	325.70
Rectangular - Special Cut 2W3H	
Ebony Clad Ext - Primed Pine Int	
Putty Exterior Glazing Profile	
Ogee Interior Glazing Profile	
Standard Bottom Rail	
Black Weather Strip	
White Folding Handle	
***Handles/Covers Ship Loose	
White Multi - Point Lock	
Sash Limiter - 3" Travel	62.99
Extruded Aluminum Screen	
White Surround	
Bright View Mesh	
***Screen/Combo Ship Loose	
6 9/16" Jambs	84.50
Nailing Fin	
***Note: Unit Availability and Price is Subject to Change	

Project Subtotal Net Price: USD	133,230.33
8.000% Sales Tax: USD	10,658.43
Project Total Net Price: USD	143,888.76

TERMS AND CONDITIONS

Net 15 days from delivery to site, not to exceed 30 days from receipt of goods at SNA facilities.

Accounts past due will incur interest charges of 1.5% per month. Said charges are enforceable under the lien laws in the state of Ohio.

A builder and or homeowner signature is required prior to the order being placed with our manufacturer. I/we agree the information provided in the quotation and listed above is correct and that this order is being placed with the criteria listed both above and on the final quotation. My/our signature below indicates that we have reviewed and agree with all the aspects of the order. All orders are understood to be custom and changes cannot be made after the order has been placed with the manufacturer. Any errors or changes on my part will be charged to me or my account in full. Any damages or shortages must be reported within 24 hours; reports can be made by calling (614) 505-7336. Returns are not permitted. A Delivery charge of \$135.00 may apply.

Homeowner _____ Date _____

Builder _____ Date _____

PRODUCT AND PERFORMANCE INFORMATION

NFRC Ratings:

NFRC energy ratings may vary depending on the exact configuration of glass thickness used on the unit. NFRC energy values and ratings may change over time due to ongoing product changes, updated test results or requirements. NFRC values and ratings are finalized on the date of manufacture.

The National Fenestration Rating Council (NFRC) has developed and operates a uniform rating system for the energy performance of fenestration products, including windows, doors and skylights. For additional information regarding this rating system, see www.nfrc.org.

Code (residential, building or energy) Compliance:

Determining the suitability and compliance with state, provincial, local, or other applicable building codes or standards, including energy codes, is the responsibility of the buyer, user, architect, contractor, installer, and/or other construction professional.