

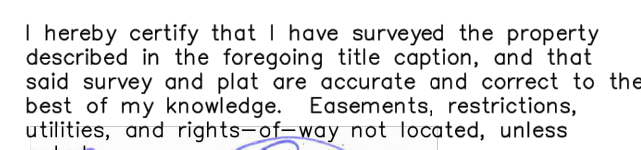


PARCEL ID:	273403355800
ZONING:	HR HISTORIC RESIDENTIAL
HEIGHT DISTRICT:	24' TO MEAN OF CABLE
PROPOSED HEIGHT:	21'-6"
LOT AREA:	21,524.7 SF
HISTORIC DISTRICT:	YES
FLOOD ZONE:	YES
EXISTING ZONE:	VACANT
PROPOSED USE:	SINGLE FAMILY RESIDENCE
MAX LOT COVERAGE:	45% OR 9,686.1 SF
PROPOSED LOT COVERAGE:	5,693.97 OR 26.4%
MAX BUILDING COVERAGE:	25% OR 5,381.2 SF
PROPOSED BUILDING COVERAGE:	2,896 SF OR 13.4%
FRONT YARD SETBACK:	0%
SIDE YARD SETBACK:	3'
TOTAL COMBINED SIDE YARD SETBACK:	12'
REAR YARD SETBACK:	20%

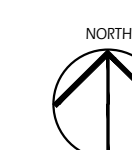


190 S. RIVERVIEW ST
DUBLIN, OH 43017

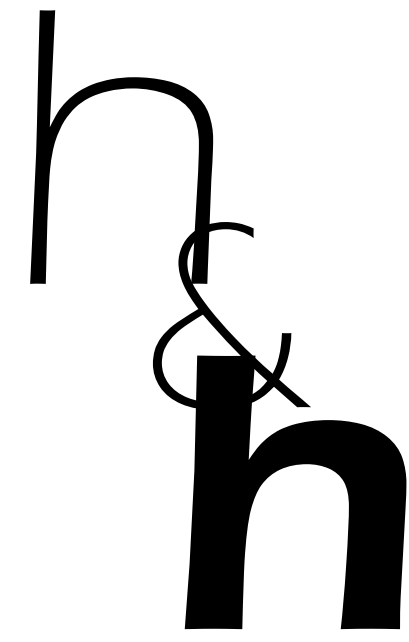
ZONING PLAN



Robert T. Patridge Jr.
Professional Surveyor No. 7462



* ALL DRAINAGE TO BE TO DAYLIGHT TO THE EAST FOLLOWING THE NATURAL SLOPE OF THE SITE
* CONTACT THE CITY FORESTER PRIOR TO PLANTING, REMOVING, PRUNING, OR DIGGING WITHIN 10' OF A TREE



HIS & HERS ARCHITECTS
7422 SILVERLEAF CT
COLUMBUS, OHIO 43232
937.260.7927
HISANDHERSARCHITECTS@GMAIL.COM

WALL TYPES

	NEW WALL
	MASONRY
	POURED CONCRETE

GENERAL STRUCTURAL NOTES

- TRUSSES TO BE DESIGNED BY TRUSS MANUFACTURER
- GENERAL CONTRACTOR TO VERIFY ALL NAILING PATTERNS & BEAM CALCULATIONS WITH LUMBER SUPPLIER PRIOR TO PURCHASE
- BUILDER TO VERIFY THAT ALL STRUCTURAL LOADS TRANSFER TO FOUNDATION
- TYPICAL SUBFLOOR TO BE 3/4" T&G FLOOR OR EQUAL PANELS, GLED AND NAILED
- PROVIDE 2x2 POSTS MINIMUM, GLED AND NAILED AT EACH END OF HEADERS & BEAMS
- PROVIDE SIMPSON STRONG-IE OR EQUAL BEAM AND JOIST HANGERS AT ALL FLUSH FRAMING CONNECTIONS AS REQUIRED BY CODE UNLESS NOTED OTHERWISE - NOTIFY ARCHITECT OF DISCREPANCIES
- FASTEN ALL 2X WINDOW HEADERS WITH 2 ROWS OF 12d COMMON NAILS AT 12" O.C. 1-1/2" FROM EACH END
- FASTEN ALL HEADERS TO KING STUDS W/ (3) 12d TENSILS PER SIDE
- FASTEN ALL JACK STUDS AND KING STUDS TO EACH OTHER W/ (3) 12d NAILS AT 18" O.C.
- ALL BEAMS MUST BE SUPPORTED BY A COLUMN OF EQUAL OR GREATER DEPTH. ALL 2X BEAMS TO BE SUPPORTED BY AN EQUAL NUMBER OF STUDS AT EACH END. ALL LVL BEAMS TO BE SUPPORTED BY A GREATER NUMBER OF STUDS. FOR EXAMPLE: 2- 13'4" LVL'S 3 1/2" WIDE AND MUST BE SUPPORTED BY 3 2X STUDS + 4 1/2"

STANDARD STEEL UNTEL NOTES

PROVIDE UNTELS OVER ALL OPENINGS IN MASONRY WALLS. NOT ALL UNTELS ARE SHOWN ON THE STRUCTURAL DRAWINGS. REFER TO ARCHITECTURAL DRAWINGS FOR SIZES AND LOCATIONS OF OPENINGS. FOR STANDARD UNTELS, USE THE APPROPRIATE UNTEL FROM THE SCHEDULE IN NOTE 1 BELOW.

PROVIDE ONE ANGLE FOR EACH "F" OF WALL THICKNESS AND USE 5" MINIMUM BEARING EACH END. FOR BEAM UNTELS, STOP BOTTOM PLATE 1/8" SHORT OF JAMBS AND USE 8" MINIMUM BEARING EACH END.

MASONRY OPENING	UNTEL SIZE
UP TO 4'-0"	L 3 1/2" x 3 1/2" (2" x 5/16")
4'-1" TO 6'-0" 6 1/4" TO 8'-0" 8 1/4" TO 10'-0"	L 5" x 3 1/2" x 5/16" LVL
8'-1" TO 10'-0"	L 6" x 3 1/2" x 5/16" LVL
OVER 10'-0"	L 8" x 3 1/2" x 5/16" LVL W/ 1/2" DIA. LAG BOLTS AT 24" O.C.

NOTIFY ARCHITECT

IN 6" WALLS, PROVIDE (2) L 3 1/2" x 2 1/2" x 5/16" WITH LONG LEGS BACK TO BACK UNLESS NOTED OTHERWISE. IN 10" WALLS, PROVIDE (2) L 5 1/2" x 5/16" UNLESS NOTED OTHERWISE.

FOR UNTELS SUPPORTING TRUE STONE VENEER, THE HORIZONTAL LEG OF THE STEEL ANGLE SHALL BE INCREASED TO 5" MIN. THE VERTICAL LEG FOR OPENINGS UP TO 6'-0" SHALL BE INCREASED TO 5" MIN.

NOTIFY ARCHITECT OF DISCREPANCIES

EMERGENCY ESCAPE & RESCUE OPENING REQUIREMENTS

- SILL HEIGHT ≤ 44"
- MINIMUM NET CLEAR OPENING OF 5' 7 1/2"
- EXCEPTION: GRADE FLOOR OPENINGS = MIN. 5'6"
- MINIMUM NET CLEAR OPENING HEIGHT = 24"
- MINIMUM NET CLEAR OPENING WIDTH = 20"
- EMERGENCY ESCAPE AND RESCUE OPENINGS SHALL BE OPERATIONAL FROM THE INSIDE OF THE ROOM WITHOUT THE USE OF KEYS, TOOLS OR SPECIAL KNOWLEDGE

PLUMBING FIXTURE SCHEDULE

MARK	DESCRIPTION	REMARKS
P1	KITCHEN SINK	
P2	LAUNDRY SINK	
P3	POWDER SINK	48" VANITY
P4	TOILET	
P5	PRIMARY SINK	
P6	SHOWER	FLUSH ENTRY
P7	TOILET	
P8	TUB	36" X 72"
P9	BATH SINK	60" VANITY
P10	TOILET	
P11	SHOWER	36" X 60" W/ CURB
P12	TUB/SHOWER	
P13	TOILET	
P14	BATH SINK	48" VANITY
P15	BAR SINK	
P16	TOILET	
P17	POWDER SINK	48" VANITY

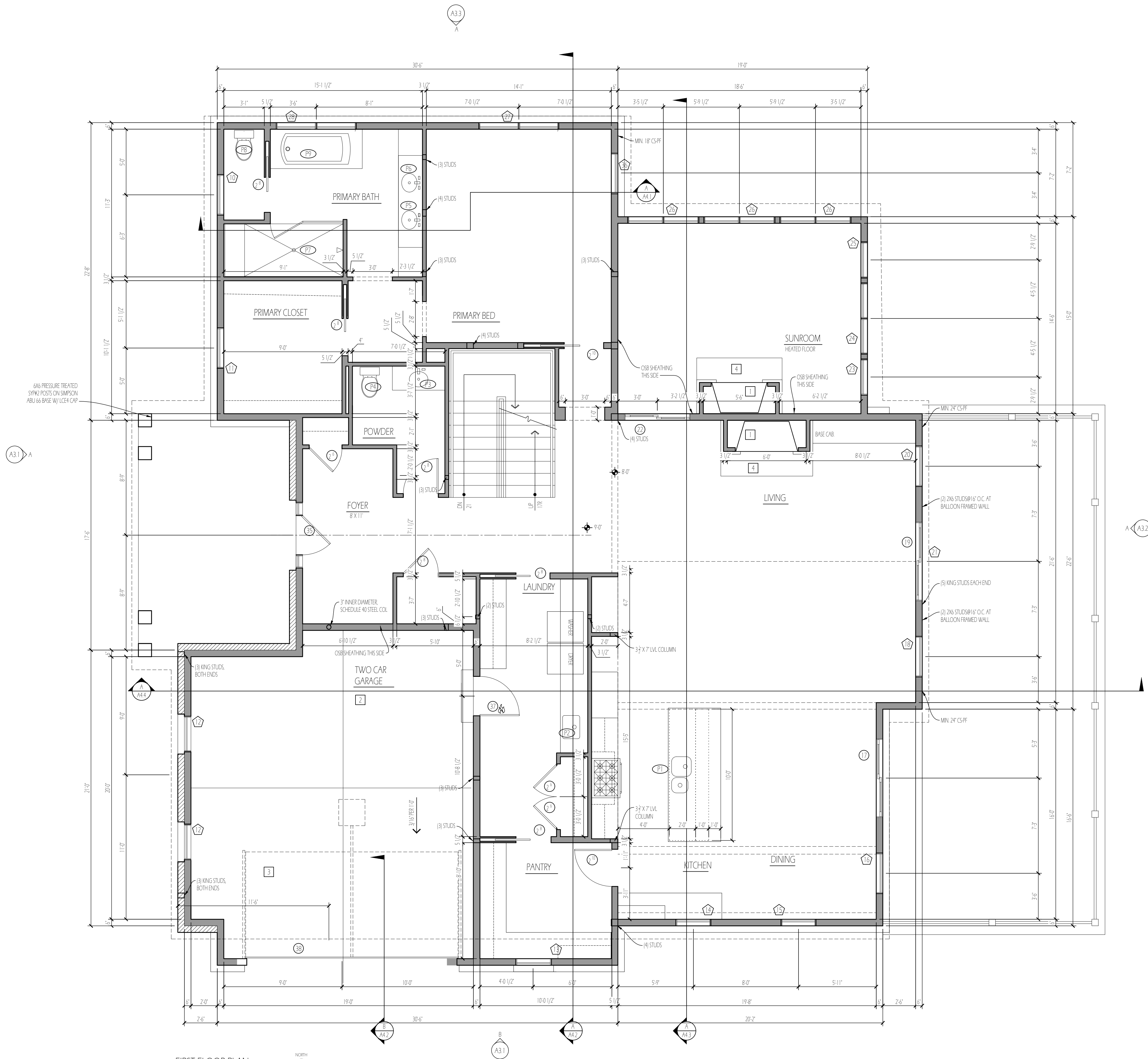
CODED PLAN NOTES

MARK	NOTE
1	FIREPLACE INSERT - SELECTION TBD. INSTALL PER MANUFACTURER'S SPECIFICATIONS G.C. TO VERIFY THAT PROPOSED STRUCTURE AND CLEARANCE IS SUFFICIENT PRIOR TO PURCHASE
2	5/8" TYPE X DRYWALL CEILING 1/2" Gypsum BOARD WALL FINISH
3	INSULATED ATTIC ACCESS PANEL, MIN. 22" X 30" ABOVE LOCATED TO PROVIDE MIN. 30" HEIGHT AT ACCESS POINT
4	HEARTH AND MANTEL REQUIREMENTS ARE DEPENDANT UPON FIREPLACE INSERT SELECTION. VERIFY WITH MANUFACTURER AND ARCHITECT PRIOR TO PURCHASE

FIRST FLOOR PLAN

SCALE: 1/4" = 1'-0"

*ALL HEADERS REQUIRE MIN. (1) JACK & (1) KING STUD AT EACH END, TYP UNLESS NOTED OTHERWISE
*PROVIDE GYPSUM BOARD THAT IS AT LEAST 1/2" INCH THICK OR WOOD STRUCTURAL PANELS THAT ARE AT LEAST 3/8" INCH THICK OR OTHER APPROVED DRAFT STOPPING TO DIVIDE PLENUM INTO APPROXIMATELY EQUAL SPACES THAT DO NOT EXCEED 1,000 SF

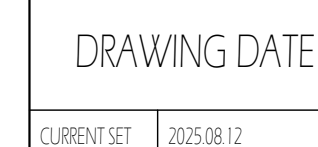
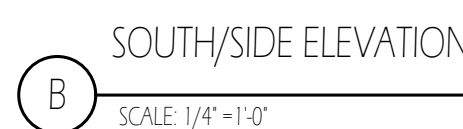


LAIRD RESIDENCE

190 S. RIVERVIEW ST
DUBLIN, OH 43017

A1.2

FIRST FLOOR PLAN/SECOND FLOOR FRAMING



LAIRD RESIDENCE

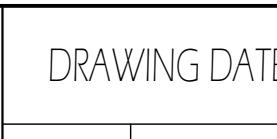
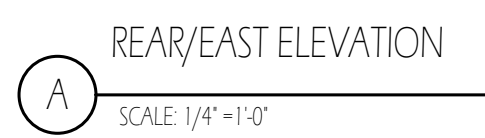
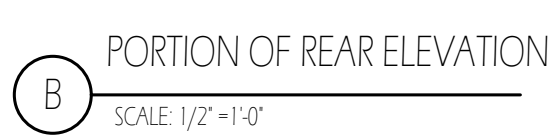
190 S. RIVERVIEW ST
DUBLIN, OH 43017

A3.1

EXTERIOR ELEVATIONS

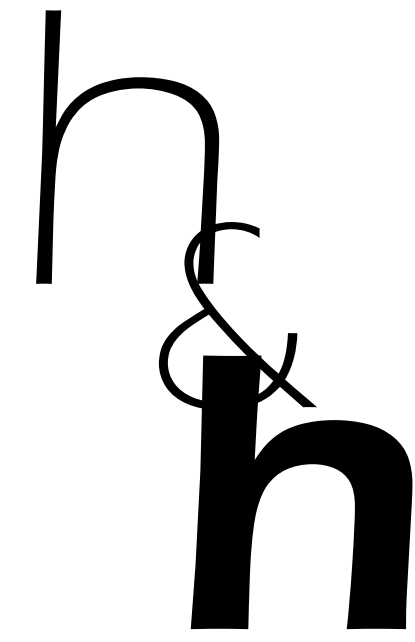


MATERIALS SCHEDULE					
	SURFACE	MANUFACTURER	LINE	MATERIAL	COLOR
	WINDOWS	MARVIN	CLAD ULTIMATE	ALUMINUM CLAD WOOD	EBONY (BLACK)
ROOFING	ARCHITECTURAL DIMENSIONAL SHINGLE	CERTAINTEED	LANDMARK PRO	ASPHALT	WEATHERED WOOD
	STANDING SEAM	COATED METALS GROUP	STANDING SEAM	METAL	IRON ORE - ULTRA GLASS
	GUTTERS & DOWNSPOUTS	COATED METALS GROUP	6" HALF ROUND GUTTERS & 4" ROUND DOWNSPOUTS	METAL	IRON ORE - ULTRA GLASS
	SHAKE	HARDIE	STRAIGHT EDGE	FIBER CEMENT	SW OYSTER BAY
SIDING	BORDED AND BATTEN	HARDIE	SMOOTH W/ BATTENS @ 12" O.C.	FIBER CEMENT	SW ALABASTER
	TRIM	HARDIE	SMOOTH	FIBER CEMENT	SW ALABASTER
	STONE	HARCOURT	DIMENSIONAL	STONE	BEAVER CREEK
CUT STONE HEADERS, SILL & WATER TABLE CAP				INDIANA LIMESTONE	
	CEILING	TRV	PAINTAGE	COMPOSITE	HONEY CROWN

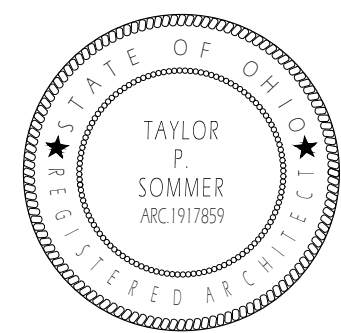
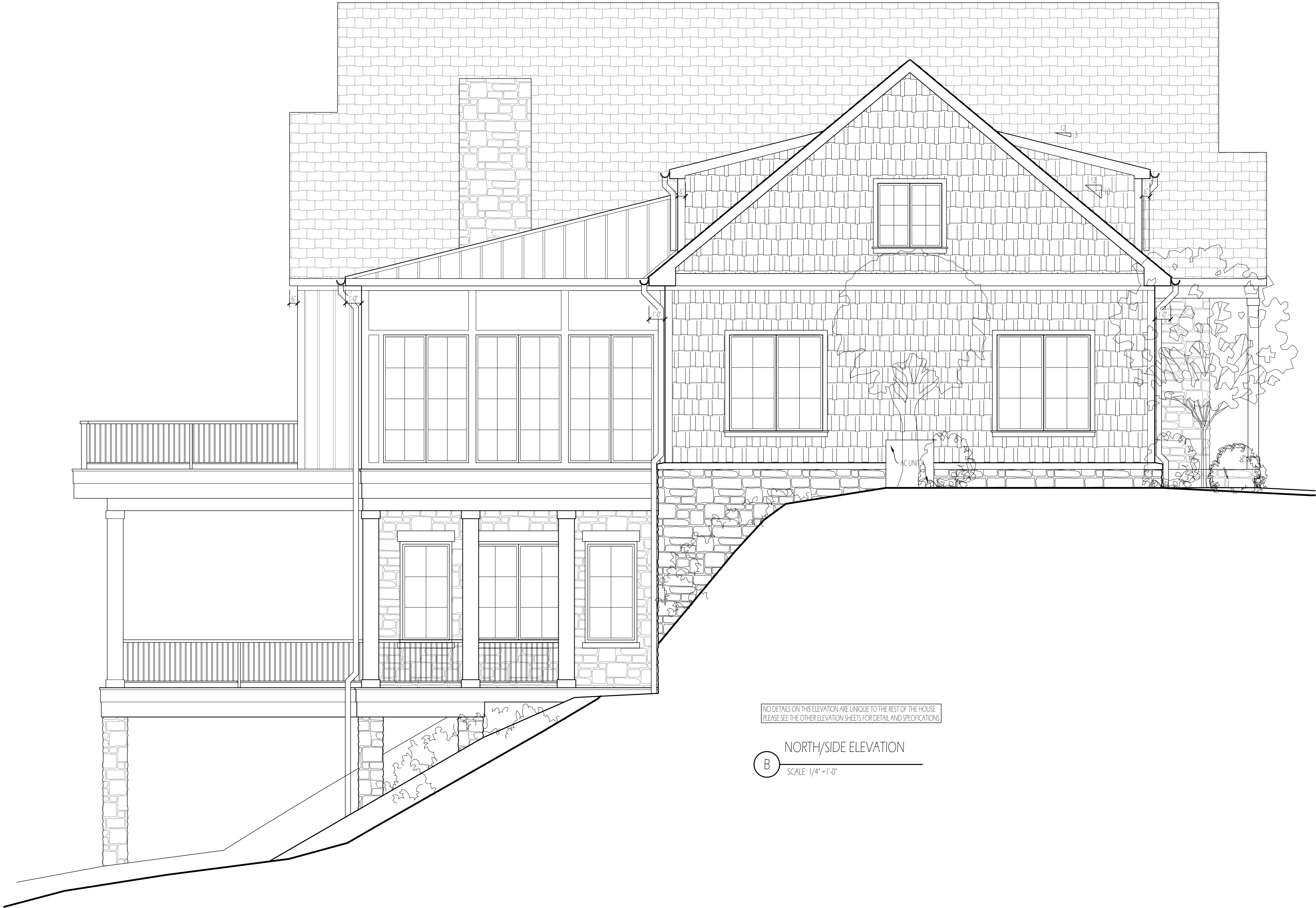


190 S. RIVERVIEW ST.
DUBLIN, OH 43017

EXTERIOR ELEVATIONS



HIS & HERS ARCHITECTS
7422 SILVERLEAF CT
COLUMBUS, OHIO 43232
9372607927
HISANDHERSARCHITECTS@GMAIL.COM



DRAWING DATE
CURRENT SET 2025.08.12

LAIRD RESIDENCE
190 S. RIVERVIEW ST
DUBLIN, OH 43017

A3.3

EXTERIOR ELEVATIONS

VISUAL COMFORT & Co.

8737401-12: Large One Light Outdoor Wall Lantern



Dimensions:

Diameter:	14.0"	Extends:	21.125'
Width:	14.0"	Extends Max:	27.125'
Height:	13.5"	Wire:	6.5" (color;Black/White)
Weight:	3.4 lbs.	Mounting Proc.:	Cap Nuts
		Connection:	Mounted To Box

Bulbs:

1 - Medium A19 75.0w Max. 120v Not included

Features:

- Dark Sky friendly. Designed to emit no light above the 90° horizontal plane. Photometry unavailable.
- Easily converts to LED with optional replacement lamps
- Meets Title 24 energy efficiency standards
- Title 24 compliant if used with Joint Appendix (JA8) approved light bulbs listed in the California Energy Commission Appliance database.

Material List:

1 Body - Aluminum - Black

Safety Listing:

Safety Listed for Wet Locations

Instruction Sheets:

English (8537401 8637401 8737401 8837401)
Trilingual (English, Spanish, and French) (8537401 8637401 8737401 8837401)
Trilingual (English, Spanish, and French) (990W8_37401-BRL)

Collection: Barn Light

Featured in the decorative Barn Light collection

1 A19 Medium 75 watt light bulb

Dark sky friendly. Designed to emit no light above the 90° horizontal plane. Photometry unavailable.

Easily converts to LED with optional replacement lamps

Meets Title 24 energy efficiency standards

UPC #:785652069390

Finish: Black (12)

Backplate / Canopy Details:

Type	Height / Length	Width	Depth	Diameter	Outlet Box Up	Outlet Box Down
Back Plate			1.25	5.0	5.25	8.25

Shipping Information:

Package Type	Product #	Quantity	UPC	Length	Width	Height	Cube	Weight	Fr. Class	UPS Ship
Individual	8737401-12	1	785652069390	20.5	16.5	16.38	3.21	5.3	0	Yes
Master Pack	8737401-12	0	10785652069397							No
NJ Pallet		24		48.0	40.0	70.0	77.78	127.0		No
NV Pallet		24		48.0	40.0	70.0	77.78	85.0		No

VISUAL COMFORT & Co.

8831101EN7-12: Extra Large One Light Outdoor Wall Lantern



Dimensions:

Width: 8.0"
Height: 23.0"

Extends: 9.5'
Wire: 6.5" (color;Black/White)
Mounting Proc.: Cap Nuts
Connection: Mounted To Box
Watts: 8
Lumens: 800

Bulbs:

1 - LEDMedium A19 8.0w Max. 120v included

Features:

- ENERGY STAR® Qualified
- LED Bulbs are an efficient, versatile and durable light source that deliver exceptional performance.
- Meets Title 24 energy efficiency standards
- Title 24 compliant when used with included Joint Appendix (JA8) approved lamp.

Material List:

1 Body - Aluminum - Black

Safety Listing:

Safety Listed for Wet Locations

Instruction Sheets:

Trilingual (English, Spanish, and French) (VADO_OD_WALL)
Trilingual (English, Spanish, and French) (8531101 8631101 8731101 8831101)

Shade / Glass / Diffuser Details:

Part	Material	Finish	Quantity	Item Number	Length	Width	Height	Diameter	Fitter Diameter	Shade Top Length	Shade Top Width	Shade Top Diameter
Shade	Glass	Clear	1				12.0	5.0				

Backplate / Canopy Details:

Type	Height / Length	Width	Depth	Diameter	Outlet Box Up	Outlet Box Down
Back Plate	8.0	6.0	0.75		3.5	

Replacement Bulb Data:

Product #	Type	Base	Watts	Watts Consumed	Volts	Hours	Lumens	Temp (°K)	CRI
-----------	------	------	-------	----------------	-------	-------	--------	-----------	-----

Shipping Information:

Package Type	Product #	Quantity	UPC	Length	Width	Height	Cube	Weight	Fr. Class	UPS Ship
Individual	8531101-12	1	785652130441	27.1	11.2	10.4	1.83	6.35	0	Yes
Master Pack	8831101EN7-12	0	10785652130448							No
NJ Pallet		42		48.0	40.0	77.0	85.56	266.7		No
NV Pallet		42		48.0	40.0	77.0	85.56	266.7		No



America's Favorite Garage Doors®

THE BEAUTY OF NATURAL WOOD



WOOD PRODUCT SELECTION GUIDE



CLASSIC™ WOOD

Add the beauty of natural wood to your home with a handcrafted door from Clopay's Classic™ Wood garage doors, featuring traditional raised, recessed and flush panel styles that complement most homes.

CLASSIC™ WOOD

MODELS 20 & 10

RECESSED PANEL WOOD DOORS

- Handcrafted 1-3/8" section thickness with stile and rail construction in Hemlock.
- Model 20 offers Luan or Okoume panels, both available in stain grade or paint grade options.
- Model 10 features paint grade Hardboard panels.
- Multiple panel and section configurations available. Visit www.clopaydoor.com for details.
- All doors can be factory primed or finish painted White. Custom stain and paint colors also available.
- Nine factory finished stain options are available on all stain grade wood species, resulting in stain colors that complement most home trim and entry door colors. See pages 40–43 for staining options.



20

SHORT PANEL

10



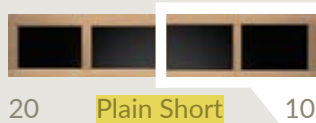
20

LONG PANEL

10

Door designs shown 8' wide × 7' high.

Window/Top Sections



20

Plain Short

10



20

Plain Long

10



20

Stockton Short



20

Stockton Long



20

Cathedral Short

10



20

Cathedral Long



20

Horizon | Sunset

10



20

Sherwood



20

Solid Short

10



20

Solid Long

10

Wood Options



Smooth Luan (S)



Okoume (R)



Hardboard

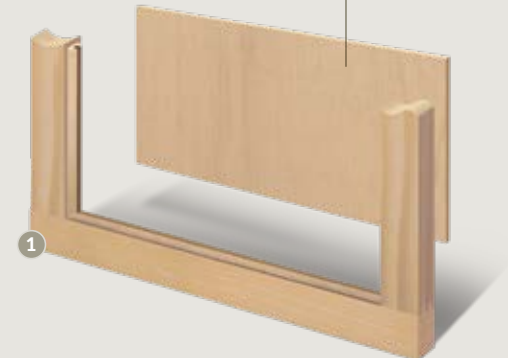
MODEL 20

MODEL 10

Solid or Finger-Jointed Hemlock Frame (H) Finger-Jointed Hemlock Frame (H)

1 WOOD FRAME AND PANELS

WOOD PANELS SLIDE INTO BEADED SLOTS



Designer inserts constructed of carved wood on Model 20 and White ABS with UV resistant capstock on Model 10.

To view additional designs, windows and top sections available, please visit www.clopaydoor.com.



Wood Base

Latex Primer

White Latex
Exterior Paint First Coat

White Latex
Exterior Paint Second Coat

- Factory painted Clopay wood doors have one layer of primer and two coats of White exterior latex paint.
- Additionally, doors can be painted by the consumer with a high-quality exterior latex paint to match the home's trim.
- Door panels are sealed with a paintable caulk to resist moisture.

With Clopay's factory finish White paint option, your wood door arrives primed, painted and ready to install. We've eliminated the extra expense of hiring a contractor to finish the door on-site and the added worry that the job will be done right. You have peace of mind knowing that the door is stored and finished according to Clopay warranty guidelines for a durable, flawless, vibrant finish that is worthy of the most discriminating close-ups.

PAINT

LIMITED
1 YR
WARRANTY

DESIGNING YOUR DOOR

Use the information below to select the appropriate model number.

RESERVE® WOOD LIMITED EDITION

Custom Reserve Door Design Base Material Overlay Material

CRD 1 L F

MATERIAL ORDERING CODES KEY:

BASE MATERIAL

M = Meranti R = Redwood
C = Cedar F = Fir
L = Luan P = Smooth Extria
G = Grooved Extria

OVERLAY MATERIAL

M = Meranti
R = Redwood
C = Cedar
F = Fir

CLASSIC™ WOOD MODEL 44

Raised Panel Rail/Stile Material Panel Material Panels Wide Panels High

44 F P # #

ORDERING CODES KEY:

RAIL/STILE MATERIAL

R = Redwood F = FJ Hemlock
C = Cedar P = Extria
H = Hemlock

PANEL MATERIAL

R = Redwood
C = Cedar
H = Hemlock
P = Smooth Extria

RESERVE® WOOD SEMI-CUSTOM

Reserve Door Rail/Stile Material Design Panel Material

R H 1 C

MATERIAL ORDERING CODES KEY:

RAIL/STILE MATERIAL

R = Redwood
C = Cedar
H = Hemlock

PANEL MATERIAL

R = Redwood P = Smooth Extria
C = Cedar G = Grooved Extria
H = Hemlock

CLASSIC™ WOOD MODEL 20

Recessed Panel Material Finish Panels Wide Panels High

20 S P 8# 4#

MODEL 10

Recessed Panel Number of Panels Wide Numbers of Panels High

10 # #

ORDERING CODES KEY:

MATERIAL

F = FJ Hemlock R = Okoume
S = Smooth Luan

FINISH

S = Stain Grade
P = Paint Grade

RESERVE® WOOD MODERN

OFFSET WINDOW

Modern Reserve Door Design Material

MRD OW M

ACCENT STRIP

Modern Reserve Door Design Material

MRD AS C

HORIZONTAL CLADDING

Modern Reserve Door Design Material

MRD HC R

MATERIAL ORDERING CODES KEY:

C = Cedar F = Fir
R = Redwood M = Meranti

CLASSIC™ WOOD MODEL 33

Flush Material Finish

33 S S

ORDERING CODES KEY:

MATERIAL

S = Smooth Luan R = Okoume

FINISH

S = Stain Grade P = Paint Grade



Visit clopaydoor.com or call 1-800-2CLOPAY (225-6729) for more information on Clopay, America's Favorite Garage Doors.

Follow us on



©2025 Clopay Corporation. All rights reserved.

RSDR-WOODIDEA-10_REV0425



START DESIGNING
YOUR NEW
GARAGE DOOR
OPEN CAMERA
AND POINT!

DECORATIVE HARDWARE

STANDARD



Spade Step Plate



Spade Lift
Handles

Attractive black powder coated handles and step plates are provided standard on Reserve® Wood garage doors. To further enhance the design of your door, optional decorative hardware, including handles, operable L-keylocks and strap hinges are available.

OPTIONAL



Spear Lift
Handles



Colonial Lift
Handles



Spade Strap Hinge*

*Complements Standard Spade Lift Handles
and Spade Step Plate*



Escutcheon
Plates



Spear
Step Plate



Colonial
Step Plate



Decorative Handles
with Keyholes



Spear Strap Hinge*



Colonial Strap Hinge*



Ring Door
Knocker



Aluminum Grip
Handles

(Reserve® Wood Modern)

*Door may not open properly if installed near the top depending on opening dimensions and lift type. See your Clopay Dealer for more details.



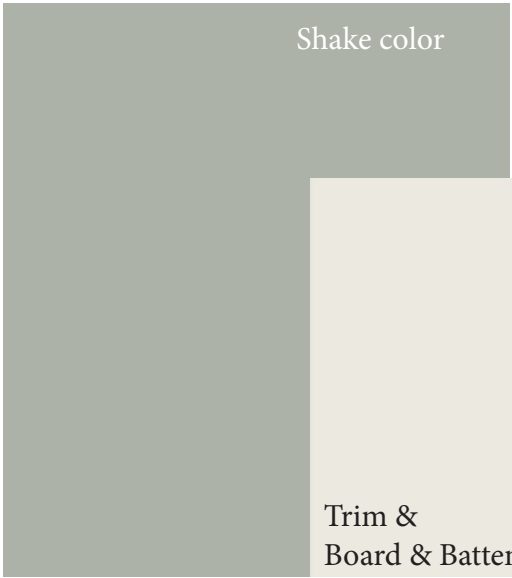
Standing seam



Roof shingles



Shake



Shake color

Trim &
Board & Batten



Stone





Search for Products & Ideas

Home

Rhinebeck Hand-Forged Iron Shutter Dog



SH500739



\$15⁰⁰

- 1 +

ADD TO CART



Estimate your Delivery Date

Enter ZIP Code to estimate your delivery date

ESTIMATE

Details

Add lasting functional flair to your window shutters with the Rhinebeck Hand-Forged Iron Shutter Dog. Hand-forged from iron in a classic design, the shutter holdbacks keep shutters in place reliably and timelessly. Sold individually.
Sold individually.
Includes fastening hardware.



Chat

Specifications

Features

Product Type	Window Hardware
Product Finish	Black Powder Coat
Mounting Hardware Concealed	No
Mounting Hardware Included	Yes
Weight (lbs)	0.52

Dimensions

Depth	5/8"
Length	6"
Width	1-1/8"

Resources

Installation Instructions

Associate Information

[Back to Top](#)

Frequently Bought Together

			
Hand Forged Iron Georgetown Shutter Holdbacks	Anchorage Hand-Forged Iron Shutter Dog	Scroll Hand-Forged Iron Shutter Dog	H
\$29 ⁰⁰	\$15 ⁰⁰	\$20 ⁰⁰	\$

Close 

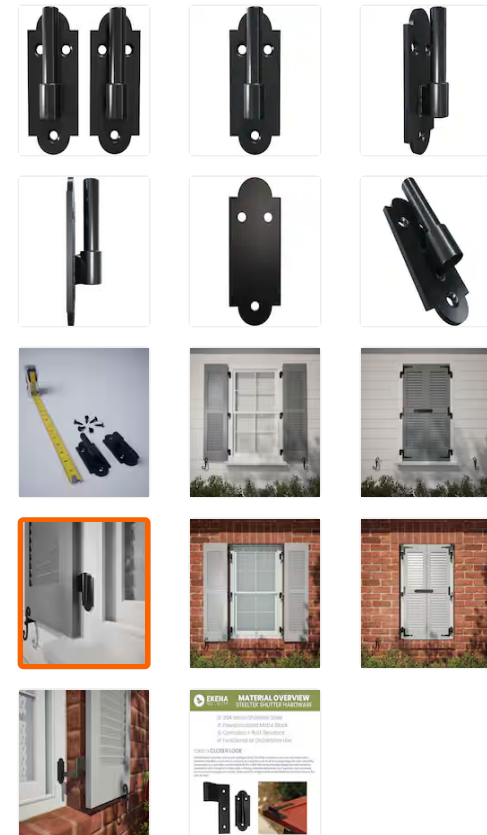


Hover Image to Zoom


SteelTek Pintel on Plate with-1/2-in Offset (Sold as Pair), 304 Stainless Steel, Powder Coated Black

by **Ekena Millwork**

Product Images



 Feedback

 How soon can I get this delivered to my zip code?