

1 EXISTING NORTH BUILDING ELEVATION
SCALE: 3/16"=1'-0" (FULL SIZE)
3/32"=1'-0" (11x17)

NOTES:

- THIS DRAWING IS FOR EXHIBIT PURPOSES ONLY
- PLEASE REFER TO STRUCTURAL REPORT PROVIDED BY OTHERS FOR CONFIRMATION OF ADEQUATE STRUCTURE CAPACITY.
- NO LINE OR ANTENNA WORK TO BEGIN PRIOR TO CONFIRMATION OF ADEQUATE TOWER AND MOUNT CAPACITY USING THE FINAL CONFIGURATION.
- ALL EXISTING & PROPOSED INFORMATION PROVIDED BY LL AND VERIZON WIRELESS.
- NO NEW ELECTRICAL WORK BEING DONE AND NO NEW VOLTAGE REQUIRED.
- ALL NEW OVPS MUST BE INSTALLED ON A MOUNT, NOT DIRECTLY ON THE TOWER LEG.

ANTENNA REPLACEMENT NOTES:

- CONTRACTOR TO INSPECT THE CONDITION OF EXISTING MOUNTING PIPES. CONFIRM THE FOLLOWING:
 - CORROSION; IF MOUNTS ARE FOUND TO BE CORRODED CONTACT VERIZON REP. FOR DIRECTION.
 - CHECK CONDITION OF ATTACHMENT BOLTS. IF FOUND LOOSE, TIGHTEN TO ORIGINAL SPECIFICATIONS (ALSO, TURN OF THE NUT METHOD).
 - IF BOLTS ARE MISSING, REPLACE TO SUITE.
 - CONFIRM MOUNTING PIPE IS ADEQUATELY SIZED TO ACCOMMODATE PROPOSED ANTENNA INSTALL.
- ALL WORK DEPICTED ON THIS DRAWING DESIGNED IN ACCORDANCE WITH 2024 OBC AND AMENDMENTS.



7575 COMMERCE COURT
LEWIS CENTER, OH 43035

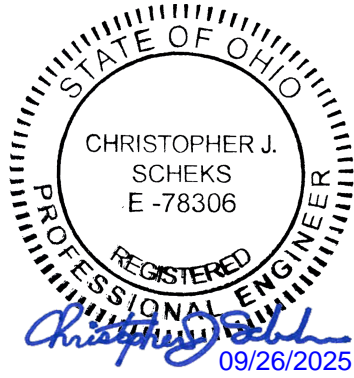
LATITUDE: 40° 4' 38.3016" N
(40.077306)
LONGITUDE: 83° 7' 39.7992" W
(-83.127722)



Glaus, Pyle, Schomer, Burns & DeHaven, Inc.

520 South Main Street, Suite 2531
Akron, OH 44311
330.572.2100 Fax 330.572.2101
Copyright: Glaus, Pyle, Schomer, Burns & DeHaven, Inc. 2025

REVISIONS					
NO	DESCRIPTION	DATE	BY	TD	TD
A	ISSUED FOR REVIEW	09/12/2025			
0	ISSUED FOR CONSTRUCTION	09/12/2025			
1	RE-ISSUED FOR CONSTRUCTION	09/16/2025			
2	RE-ISSUED FOR CONSTRUCTION	09/25/2025			



IT IS A VIOLATION OF LAW FOR ANY PERSON, UNLESS THEY ARE ACTING UNDER THE DIRECTION OF THE LICENSED PROFESSIONAL ENGINEER, TO ALTER THIS DOCUMENT.

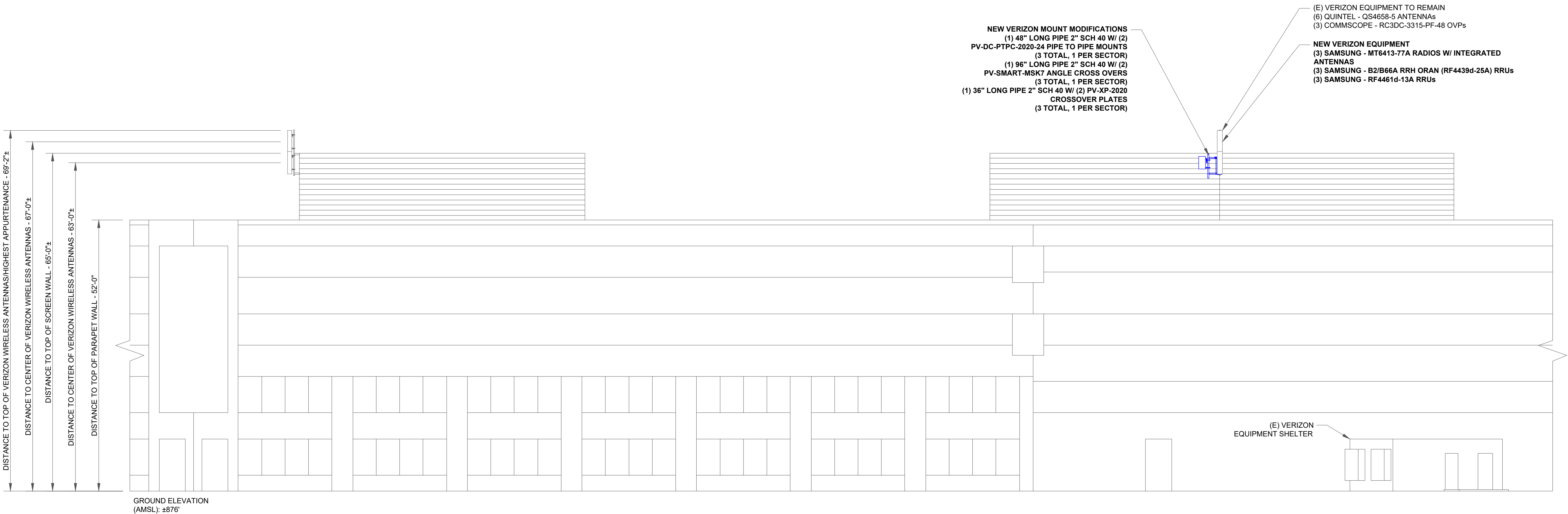
SITE ID: 411123
FUZE PROJECT ID: 17080741
MDG LOCATION ID:
5000305363
TUTTLE CROSSING
5080 TUTTLE CROSSING
BLVD
DUBLIN, OH 43016

DRAWN BY:	TD
CHECKED BY:	ZT
DATE:	09/25/2025
PROJECT #:	2024737.00.149814.01

SHEET TITLE
EXISTING NORTH
BUILDING ELEVATION

SHEET NUMBER

C-1.1



DISTANCE TO TOP OF VERIZON WIRELESS ANTENNAS HIGHEST APPURTENANCE - 69'-2"
DISTANCE TO CENTER OF VERIZON WIRELESS ANTENNAS - 67'-0"
DISTANCE TO TOP OF SCREEN WALL - 65'-0"
DISTANCE TO CENTER OF VERIZON WIRELESS ANTENNAS - 63'-0"
DISTANCE TO TOP OF PARAPET WALL - 52'-0"

GROUND ELEVATION
(AMSL): ±876'

NEW VERIZON MOUNT MODIFICATIONS
(1) 48" LONG PIPE 2" SCH 40 W/ (2) PV-DC-PTPC-2020-24 PIPE TO PIPE MOUNTS (3 TOTAL, 1 PER SECTOR)
(1) 96" LONG PIPE 2" SCH 40 W/ (2) PV-SMART-MSK7 ANGLE CROSS OVERS (3 TOTAL, 1 PER SECTOR)
(1) 36" LONG PIPE 2" SCH 40 W/ (2) PV-XP-2020 CROSSOVER PLATES (3 TOTAL, 1 PER SECTOR)

(E) VERIZON EQUIPMENT TO REMAIN
(6) QUINTEL - QS4658-S ANTENNAS
(3) COMMScope - RC3DC-3315-PF-48 OVPs

NEW VERIZON EQUIPMENT
(3) SAMSUNG - MT6413-77A RADIOS W/ INTEGRATED ANTENNAS
(3) SAMSUNG - B2/B66A RRH ORAN (RF4439d-25A) RRUs
(3) SAMSUNG - RF4461d-13A RRUs

(E) VERIZON
EQUIPMENT SHELTER

- NOTES:
 - THIS DRAWING IS FOR EXHIBIT PURPOSES ONLY
 - PLEASE REFER TO STRUCTURAL REPORT PROVIDED BY OTHERS FOR CONFIRMATION OF ADEQUATE STRUCTURE CAPACITY.
 - NO LINE OR ANTENNA WORK TO BEGIN PRIOR TO CONFIRMATION OF ADEQUATE TOWER AND MOUNT CAPACITY USING THE FINAL CONFIGURATION.
 - ALL EXISTING & PROPOSED INFORMATION PROVIDED BY LL AND VERIZON WIRELESS.
 - NO NEW ELECTRICAL WORK BEING DONE AND NO NEW VOLTAGE REQUIRED.
 - ALL NEW OVPS MUST BE INSTALLED ON A MOUNT, NOT DIRECTLY ON THE TOWER LEG.
- ANTENNA REPLACEMENT NOTES:
 - CONTRACTOR TO INSPECT THE CONDITION OF EXISTING MOUNTING PIPES. CONFIRM THE FOLLOWING:
 - CORROSION; IF MOUNTS ARE FOUND TO BE CORRODED CONTACT VERIZON REP. FOR DIRECTION.
 - CHECK CONDITION OF ATTACHMENT BOLTS. IF FOUND LOOSE, TIGHTEN TO ORIGINAL SPECIFICATIONS (ALSO, TURN OF THE NUT METHOD).
 - IF BOLTS ARE MISSING, REPLACE TO SUITE.
 - CONFIRM MOUNTING PIPE IS ADEQUATELY SIZED TO ACCOMMODATE PROPOSED ANTENNA INSTALL.
 - ALL WORK DEPICTED ON THIS DRAWING DESIGNED IN ACCORDANCE WITH 2024 OBC AND AMENDMENTS.

7575 COMMERCE COURT
LEWIS CENTER, OH 43035

LATITUDE: 40° 4' 38.3016" N
(40.077306)
LONGITUDE: 83° 7' 39.7992" W
(-83.127722)

Glaus, Pyle, Schomer, Burns & DeHaven, Inc.

520 South Main Street, Suite 2531
Akron, OH 44311
330.572.2100 Fax 330.572.2101
Copyright: Glaus, Pyle, Schomer, Burns & DeHaven, Inc. 2025

NO	DESCRIPTION	DATE	BY	TD	TD	TD	TD
A	ISSUED FOR REVIEW	09/12/2025					
0	ISSUED FOR CONSTRUCTION	09/12/2025					
1	RE-ISSUED FOR CONSTRUCTION	09/16/2025					
2	RE-ISSUED FOR CONSTRUCTION	09/25/2025					

IT IS A VIOLATION OF LAW FOR ANY PERSON, UNLESS THEY ARE ACTING UNDER THE DIRECTION OF THE LICENSED PROFESSIONAL ENGINEER, TO ALTER THIS DOCUMENT.

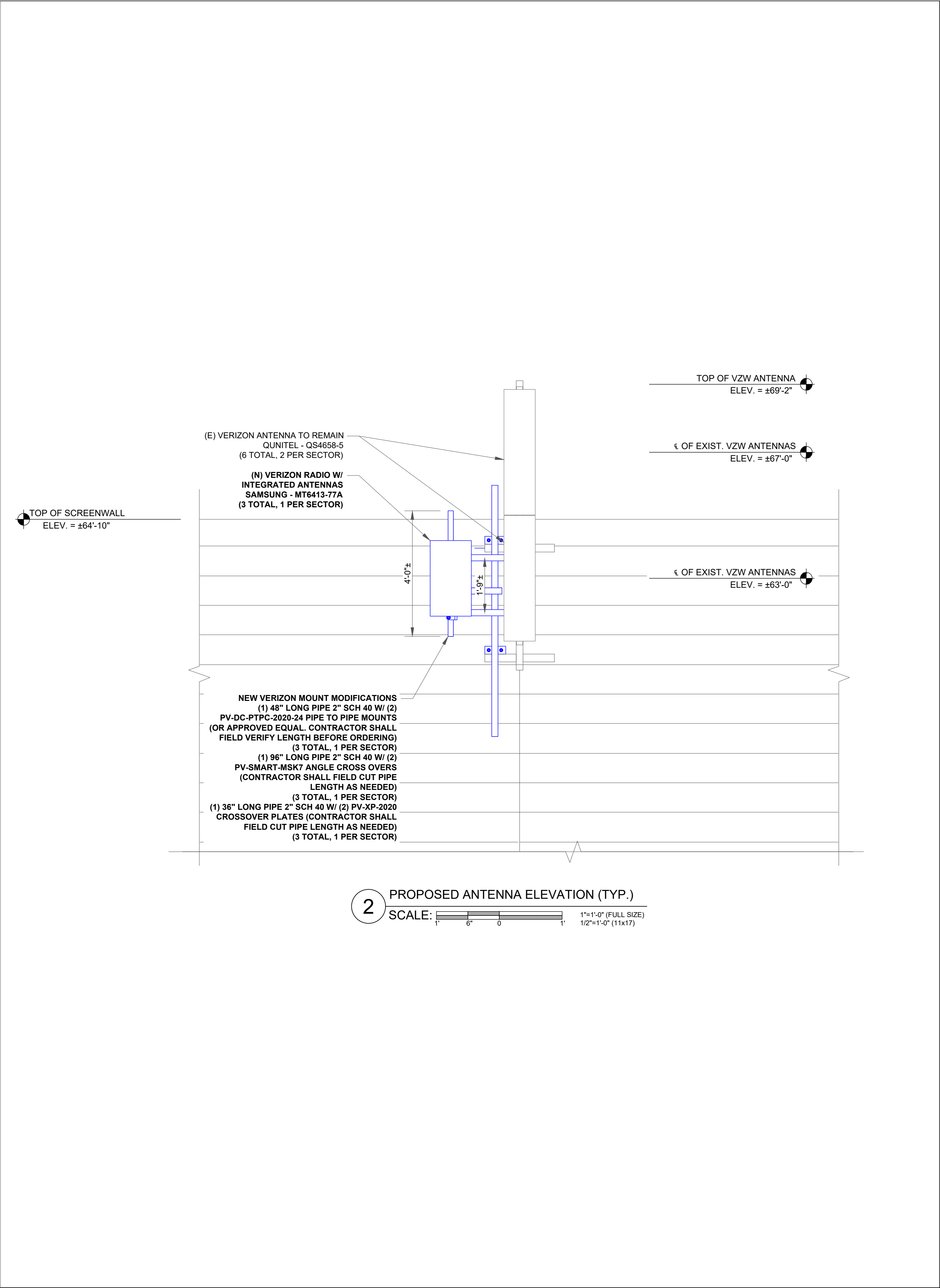
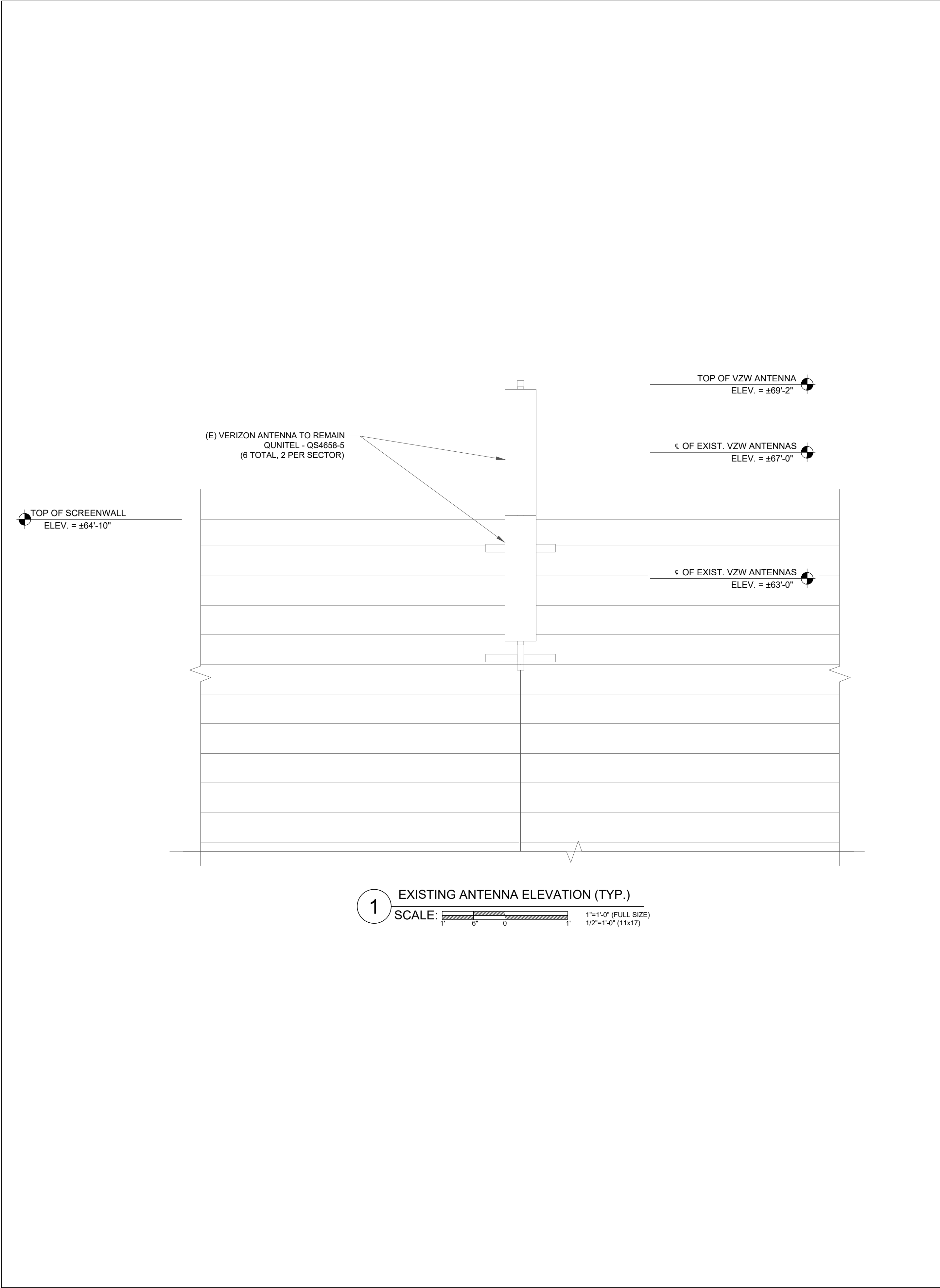
SITE ID: 411123
FUZE PROJECT ID: 17080741
MDG LOCATION ID:
5000305363
TUTTLE CROSSING
5080 TUTTLE CROSSING
BLVD
DUBLIN, OH 43016

DRAWN BY:	TD
CHECKED BY:	ZT
DATE:	09/25/2025
PROJECT #:	2024737.00.149814.01

SHEET TITLE
PROPOSED NORTH
BUILDING ELEVATION

SHEET NUMBER
C-1.2

1 PROPOSED NORTH BUILDING ELEVATION
SCALE: 3/16"=1'-0" (FULL SIZE)
3/32"=1'-0" (11x17)



7575 COMMERCE COURT
LEWIS CENTER, OH 43035

LATITUDE: 40° 4' 38.3016" N (40.077306)
LONGITUDE: 83° 7' 39.7992" W (-83.127722)

Glaus, Pyle, Schomer, Burns & DeHaven, Inc.
520 South Main Street, Suite 2531
Akron, OH 44311
330.572.2100 Fax 330.572.2101
Copyright: Glaus, Pyle, Schomer, Burns & DeHaven, Inc. 2025

NO	DESCRIPTION	DATE	BY	TD	TD	TD	TD
A	ISSUED FOR REVIEW	09/12/2025					
0	ISSUED FOR CONSTRUCTION	09/12/2025					
1	RE-ISSUED FOR CONSTRUCTION	09/16/2025					
2	RE-ISSUED FOR CONSTRUCTION	09/25/2025					

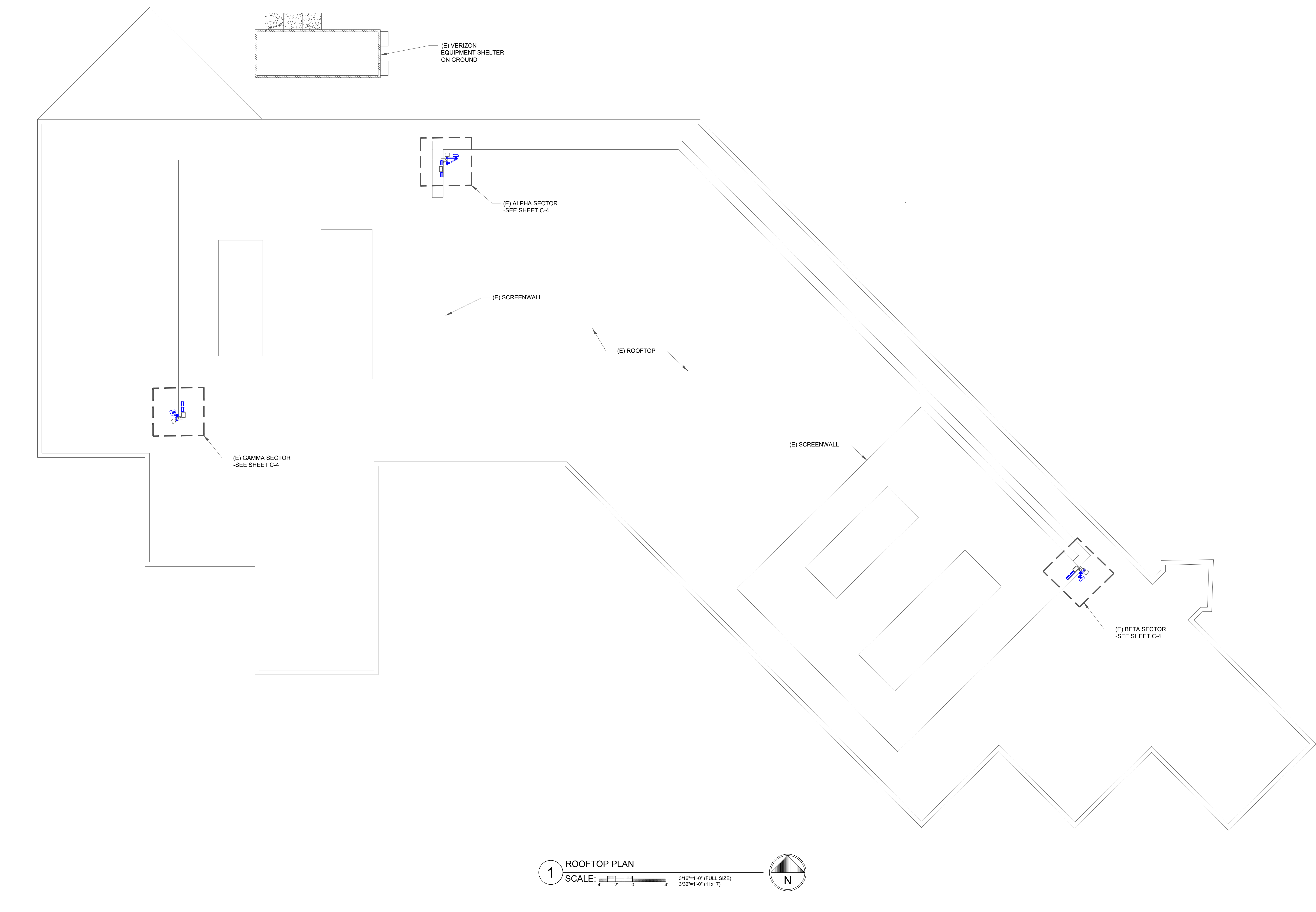
IT IS A VIOLATION OF LAW FOR ANY PERSON, UNLESS THEY ARE ACTING UNDER THE DIRECTION OF THE LICENSED PROFESSIONAL ENGINEER, TO ALTER THIS DOCUMENT.

SITE ID: 411123
FUZE PROJECT ID: 17080741
MDG LOCATION ID: 5000305363
TUTTLE CROSSING
5080 TUTTLE CROSSING BLVD
DUBLIN, OH 43016

DRAWN BY:	TD
CHECKED BY:	ZT
DATE:	09/25/2025
PROJECT #:	2024737.00.149814.01

SHEET TITLE
EXISTING/PROPOSED
EQUIPMENT ELEVATIONS

SHEET NUMBER
C-2



7575 COMMERCE COURT
LEWIS CENTER, OH 43035

LATITUDE: 40° 4' 38.3016" N
(40.077306)
LONGITUDE: 83° 7' 39.7992" W
(-83.127722)



Glaus, Pyle, Schomer, Burns & DeHaven, Inc.

520 South Main Street, Suite 2531
Akron, OH 44311
330.572.2100 Fax 330.572.2101
Copyright: Glaus, Pyle, Schomer, Burns & DeHaven, Inc. 2025

REVISIONS					
NO	DESCRIPTION	DATE	BY	TD	TD
A	ISSUED FOR REVIEW	09/12/2025			
0	ISSUED FOR CONSTRUCTION	09/12/2025			
1	RE-ISSUED FOR CONSTRUCTION	09/16/2025			
2	RE-ISSUED FOR CONSTRUCTION	09/25/2025			



IT IS A VIOLATION OF LAW FOR ANY PERSON, UNLESS THEY ARE ACTING UNDER THE DIRECTION OF THE LICENSED PROFESSIONAL ENGINEER, TO ALTER THIS DOCUMENT.

SITE ID: 411123
FUZE PROJECT ID: 17080741
MDG LOCATION ID:
5000305363
TUTTLE CROSSING
5080 TUTTLE CROSSING
BLVD
DUBLIN, OH 43016

DRAWN BY:	TD
CHECKED BY:	ZT
DATE:	09/25/2025
PROJECT #:	2024737.00.149814.01

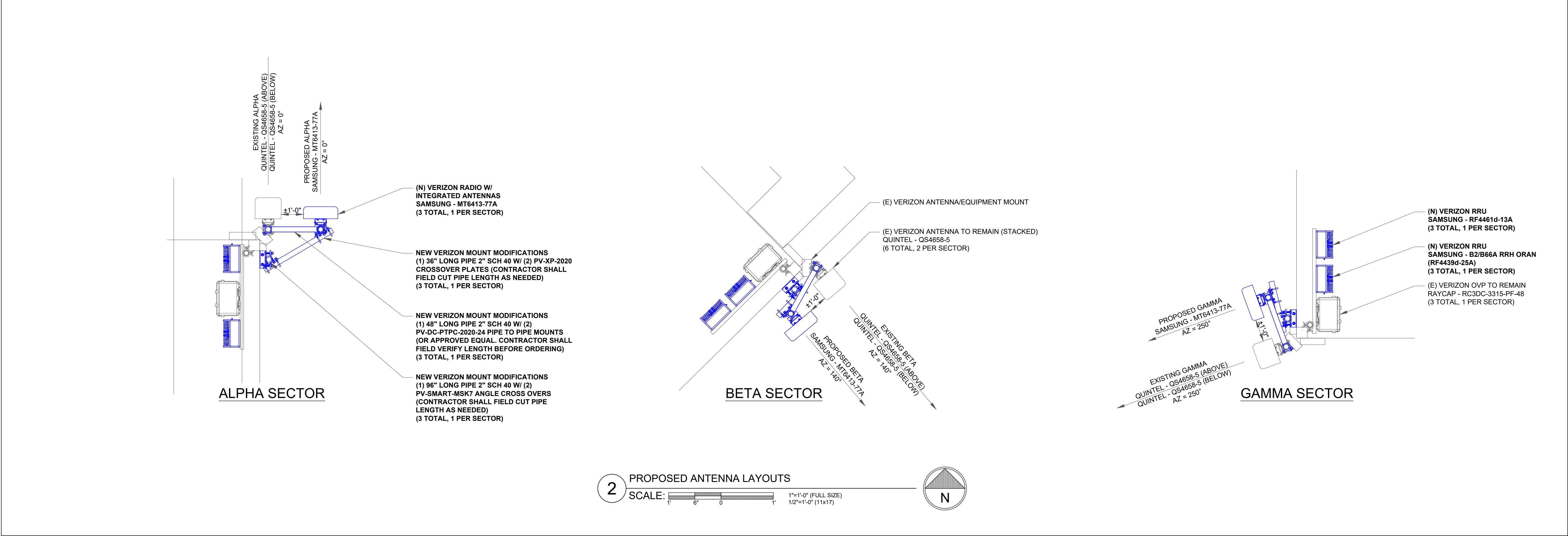
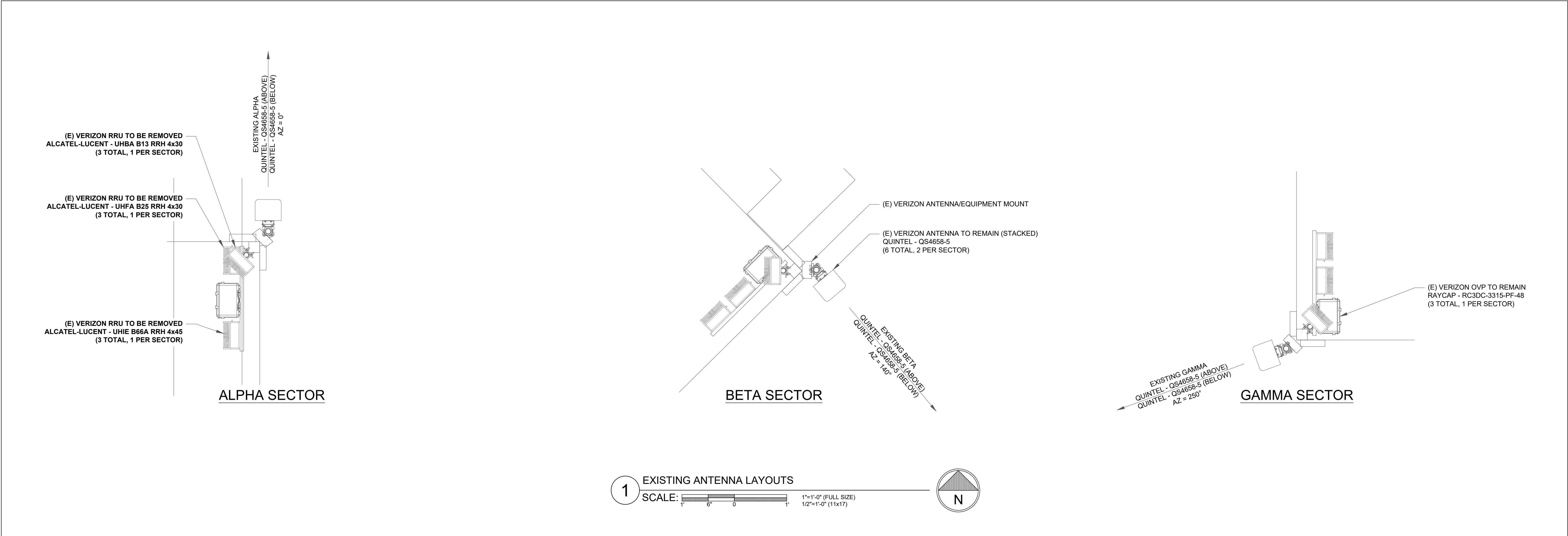
SHEET TITLE
ROOFTOP
PLAN

SHEET NUMBER

C-3

1 ROOFTOP PLAN
SCALE: 3/16"=1'-0" (FULL SIZE)
3/32"=1'-0" (11x17)





7575 COMMERCE COURT
LEWIS CENTER, OH 43035

LATITUDE: 40° 4' 38.3016" N
(40.077306)
LONGITUDE: 83° 7' 39.7992" W
(-83.127722)

520 South Main Street, Suite 2531
Akron, OH 44311
330.572.2100 Fax 330.572.2101
Copyright: Glaus, Pyle, Schomer, Burns & DeHaven, Inc. 2025

NO	DESCRIPTION	DATE	BY	TD
		09/12/2025		
A	ISSUED FOR REVIEW	09/12/2025		
0	ISSUED FOR CONSTRUCTION	09/12/2025		
1	RE-ISSUED FOR CONSTRUCTION	09/16/2025		
2	RE-ISSUED FOR CONSTRUCTION	09/25/2025		

IT IS A VIOLATION OF LAW FOR ANY PERSON, UNLESS THEY ARE ACTING UNDER THE DIRECTION OF THE LICENSED PROFESSIONAL ENGINEER, TO ALTER THIS DOCUMENT.

SITE ID: 411123
FUZE PROJECT ID: 17080741
MDG LOCATION ID: 5000305363
TUTTLE CROSSING
5080 TUTTLE CROSSING BLVD
DUBLIN, OH 43016

DRAWN BY:	TD
CHECKED BY:	ZT
DATE:	09/25/2025
PROJECT #:	2024737.00.149814.01

SHEET TITLE

ANTENNA LAYOUTS

SHEET NUMBER

C-4