

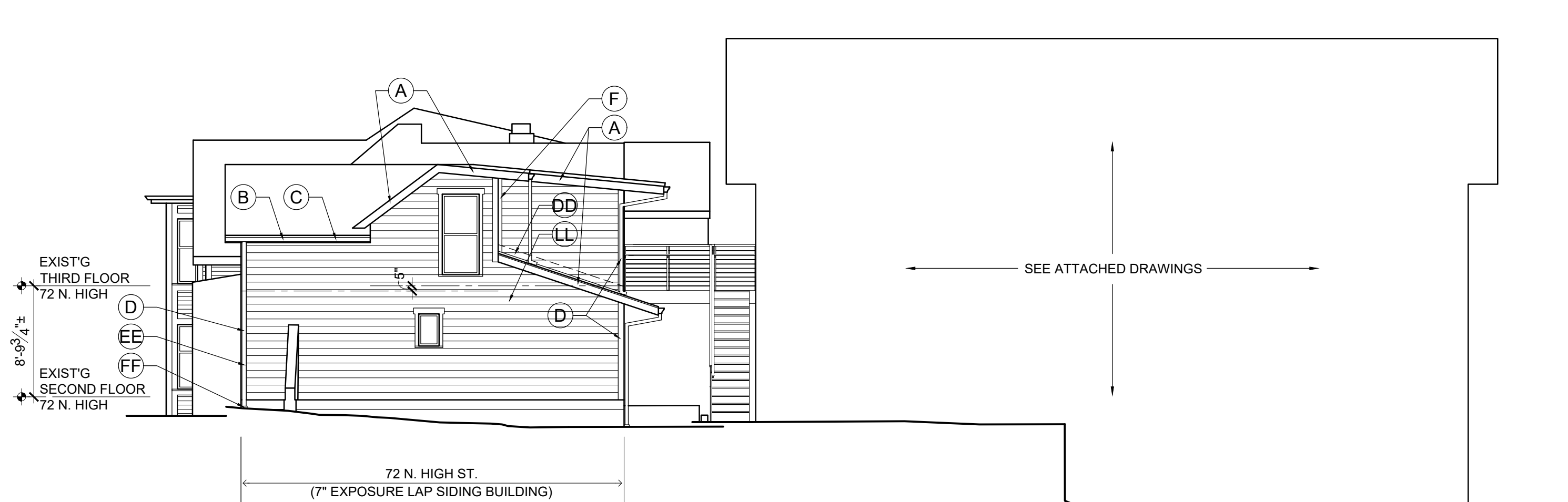
WEST ELEVATION - PROPOSED

SCALE: 1/8" = 1'-0"



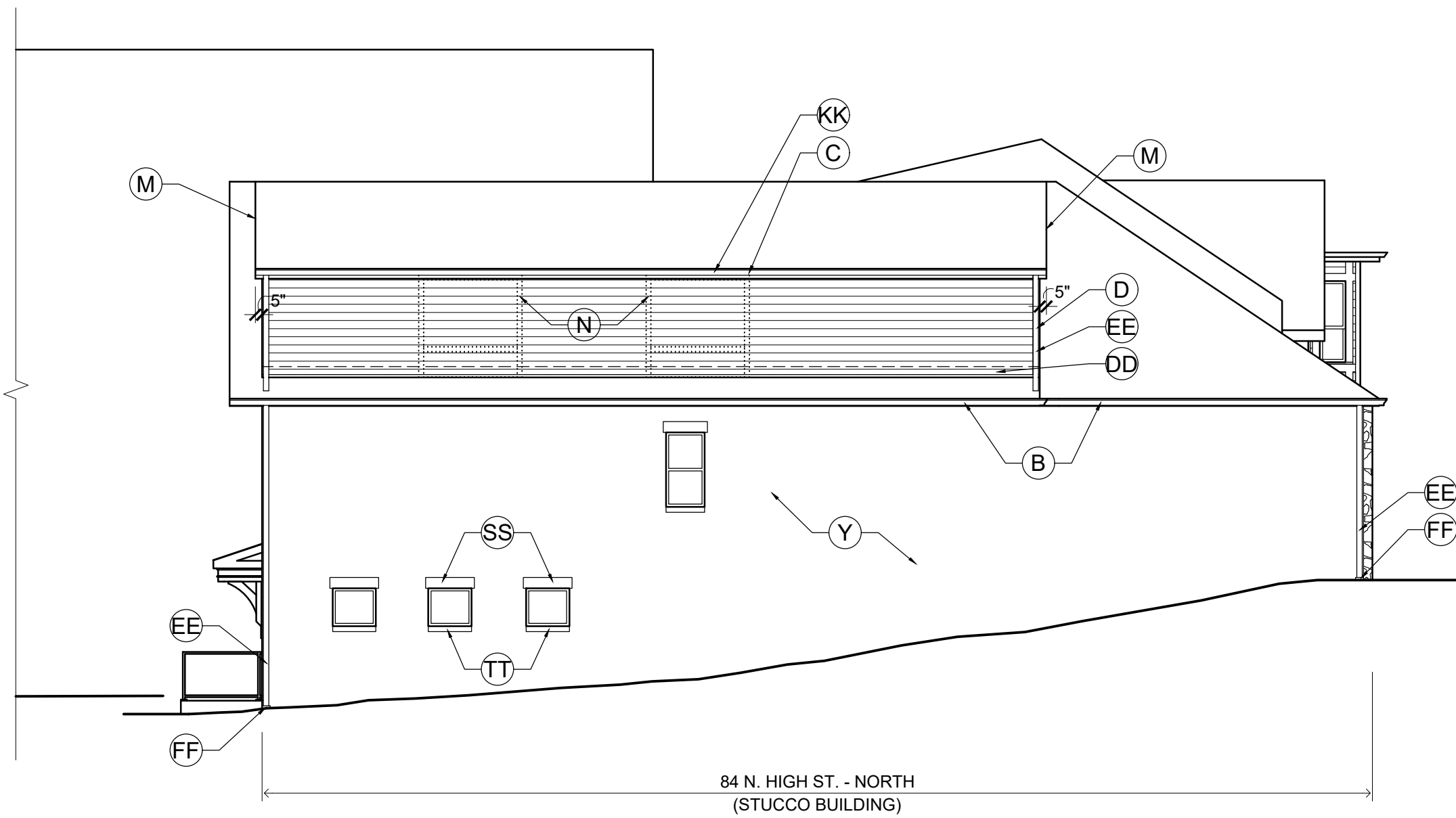
WEST ELEVATION - EXISTING

SCALE: 1/8" = 1'-0"



SOUTH ELEVATION - PROPOSED

SCALE: 1/8" = 1'-0"



NORTH ELEVATION - PROPOSED

SCALE: 1/8" = 1'-0"

- ELEVATION NOTES**
- ALL EXTERIOR TRIM TO BE REDWOOD OR SMOOTH FINISH CEDAR, UNLESS NOTED OTHERWISE. ALL SURFACES OF TRIM TO BE PRIMED PRIOR TO INSTALLATION. SAW CUTS AND NAIL HOLES TO BE PRIMED.
 - ALL GUTTERS AND DOWNSPOUTS TO CONNECT UNDERGROUND TO DRAIN TILE. IF EXISTING DRAIN TILE ARE TO BE USED, CONTRACTOR TO VERIFY THAT EXISTING DRAIN TILE ARE OPERATING PROPERLY PRIOR TO CONNECTING NEW DOWNSPOUTS
- A. RAKE BOARD TO REMAIN
B. FASCIA TO REMAIN
C. GUTTER, 5" OGEE PROFILE
D. 5/4 X 6 CORNER BOARD - NEW
E. 5/4 X 6 RAKE TRIM - NEW
F. 5/4 X 3 INSIDE CORNER BOARD - NEW
G. REMOVE EXISTING SOFFIT
H. RAKE BOARD TO REMAIN
I. 5/4 X 6 TRIM WITH HEAD FLASHING
J. SILL, PROFILE TO MATCH HOLMES LUMBER, SILL 920019
K. 2" X 1 1/2"
L. 5/4 X 10 POLY ASH TRIM WITH HEAD FLASHING
M. 5/4 TRIM OVER THE END OF EXISTING FIN
N. REDUCE OVERHANG OF EXISTING RAKE TRIM - SEE DET. 10
O. REMOVE EXISTING TRIM
P. REDUCE EXISTING SOFFIT DEPTH - SEE DET. 8
Q. ADD TRIM, 5/4 X 6 TRIM BOARD
R. STUCCO, TEXTURE TO MATCH EXISTING, PAINT APPROVED COLOR
S. REMOVE EXISTING STONE
T. REMOVE EXISTING AIR CONDITIONING UNITS
U. SKYLIGHT TO BE REMOVED
V. FLUE TO BE REMOVED
W. EXTEND EXISTING ROOF
X. MECHANICAL EQUIPMENT SCREEN
Y. NEW RAKE TRIM - SEE DET. 10
Z. REPAIR EXISTING STUCCO AS REQUIRED, PAINT STUCCO
AA. REMOVE RETURN - SEE DETAIL
BB. 1X TRIM, 3 1/2" EXPOSURE
CC. 4" TALL STONE SILL, FULL DEPTH
DD. SIDE WALL FLASHING, EXTEND UP BEHIND SIDING, HOLD SIDING 2" OFF ROOF SURFACE
EE. 3" X 4" PREFINISHED ALUMINUM DOWNSPOUT
FF. DOWNSPOUT BOOT
GG. 5/4 X 6 TRIM WITH PANEL MOLDING - SEE DET. 3
HH. OR APPROVED EQUAL
II. WINDOW TO MATCH DIMENSIONS OF EXISTING LOWER WINDOW IN NORTH BAY
JJ. 5/4 POLY ASH CAP OVER EXISTING WING WALL
KK. 1X8 FASCIA
LL. FIBER CEMENT LAP SIDING, 7" EXPOSURE, SMOOTH FINISH, BLIND NAILED
MM. 5/4 X 8 TRIM WITH HEAD FLASHING, ALIGN WITH FASCIA
NN. DROP SIDING, WOOD MATCHING ORIGINAL, WITHIN BAY
OO. 5/4 X 6 TRIM
PP. SOFFIT LIGHTING TO BE REMOVED
QQ. SURFACE MOUNTED LIGHT TO BE REMOVED
RR. FLASHING PER RUBBER ROOFING MANUFACTURER
SS. 6" TALL LIMESTONE TRIM - SEE DET. 4
TT. 4" TALL LIMESTONE TRIM - SEE DET. 4
UU. SIGNAGE LIGHTING, G.C. COORDINATE WITH SIGNAGE PLACEMENT, SEE ELECTRICAL DRAWINGS FOR SPECIFICATIONS
VV. WALL MOUNTED LIGHT FIXTURE. SEE ELECTRICAL SPECIFICATIONS
- WINDOWS**
WINDOWS IN BAYS (4)
KAWNEER TR9700
ALUMINUM - SINGLE HUNG
WINDOWS - ALL OTHERS
KAWNEER TRIFAB VERSA GLAZE 451T
ALUMINUM - FIXED WINDOW
- ENTRY DOORS**
KAWNEER 500 TUFLINE, WIDE STILE DOOR
ALUMINUM, 5" SIDE RAILS, 10" BOTTOM RAIL

ELEVATION COLORS		
72 N. HIGH		
SIDING	-	SW2836 QUARTER SAWN OAK
TRIM, GUTTERS	-	SW2829 CLASSIC WHITE
DOWNSPOUTS		
WINDOW FRAMES	-	SW2829 CLASSIC WHITE
84 N. HIGH - SOUTH		
SIDING	-	SW2828 ROYCROFT PEWTER
TRIM, GUTTERS	-	SW2829 CLASSIC WHITE
DOWNSPOUTS		
WINDOW FRAMES		
84 N. HIGH - NORTH		
STUCCO	-	SW2829 CLASSIC WHITE
TRIM, GUTTERS	-	SW2829 CLASSIC WHITE
DOWNSPOUTS		
WINDOW FRAMES		
EXTERIOR RAILINGS	-	SW7069 IRON ORE
ROOF	-	TIMBERLINE HDZ ASPHALT GAF SHINGLES PEWTER GRAY
DECKING, RAILING TOP CAP	-	TIMBERTECH DRIFTWOOD

THE RENOVATION OF
72 AND 84 N. HIGH STREET



Gary J. Alexander,
Architect
1265 Neil Avenue, Columbus, Ohio 43201
(614) 487-0637

M.P. REVIEW: 02/05/25
M.P. REVIEW
REVISIONS: 03/20/25
PERMIT: 09/17/25

REVISED: 11/10/25
REVISED: 01/13/26

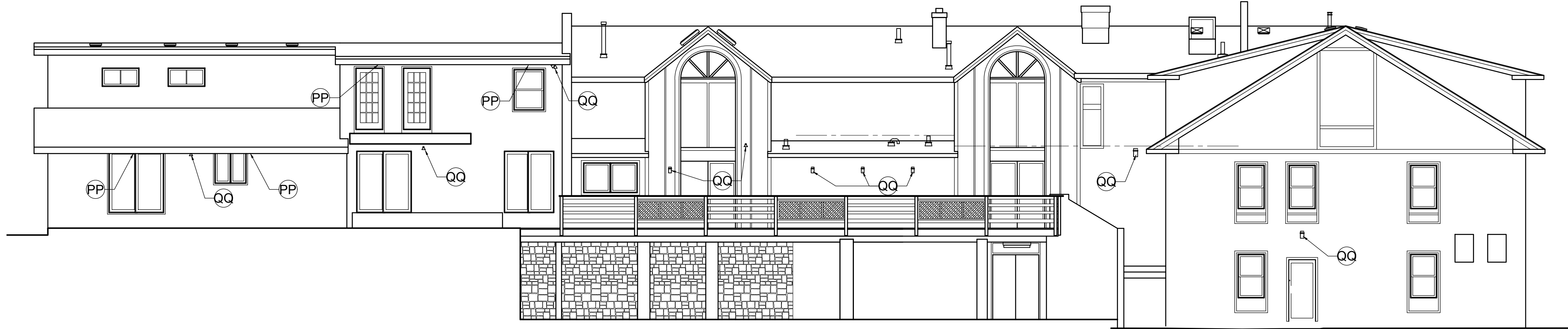
A-9

COPYRIGHT 2025
THE DRAWINGS, SPECIFICATIONS AND OTHER DOCUMENTS GENERATED SHALL REMAIN THE PROPERTY OF GARY J. ALEXANDER, ARCHITECT AND MAY NOT BE USED, DUPLICATED, OR ALTERED, WITHOUT WRITTEN CONSENT OF THE ARCHITECT.



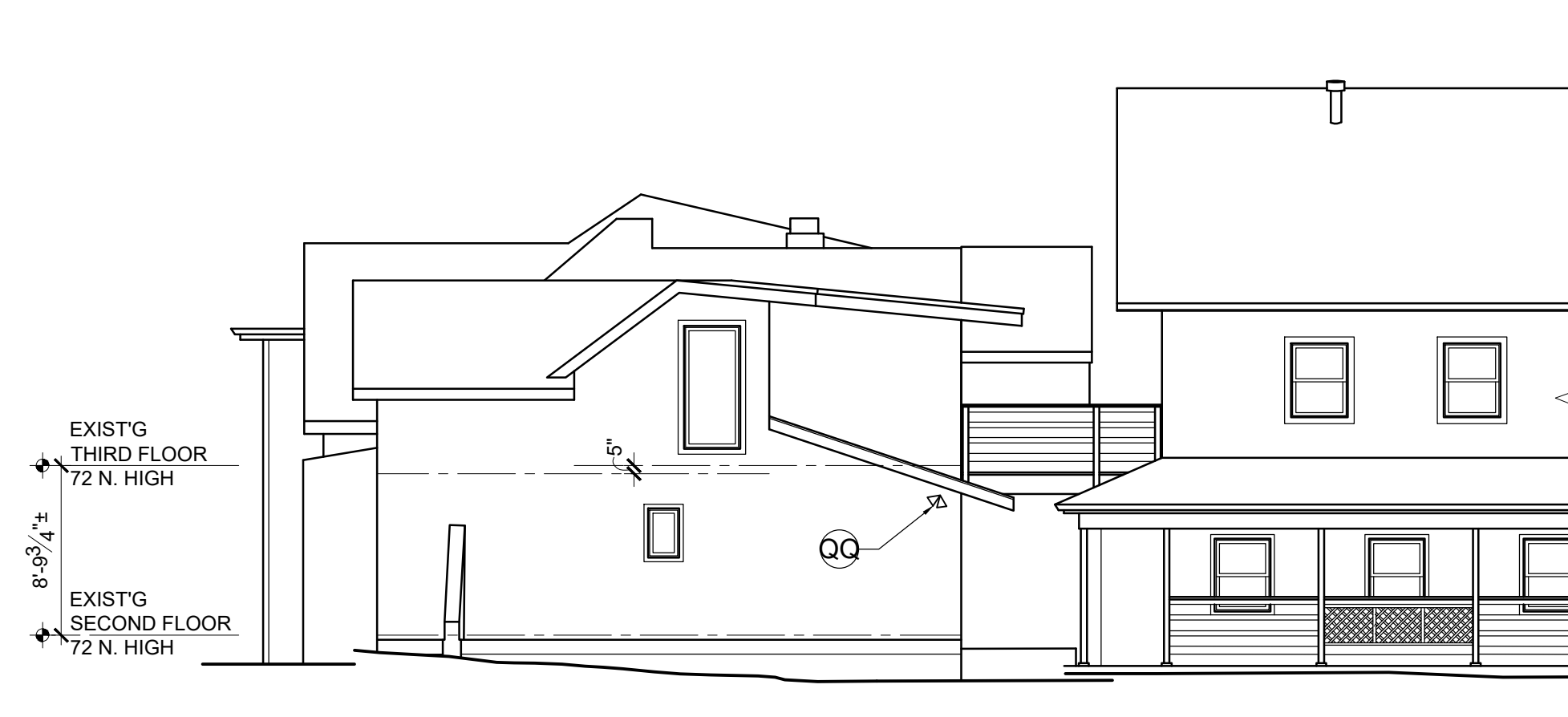
EAST ELEVATION - PROPOSED

SCALE: 1/8" = 1'-0"



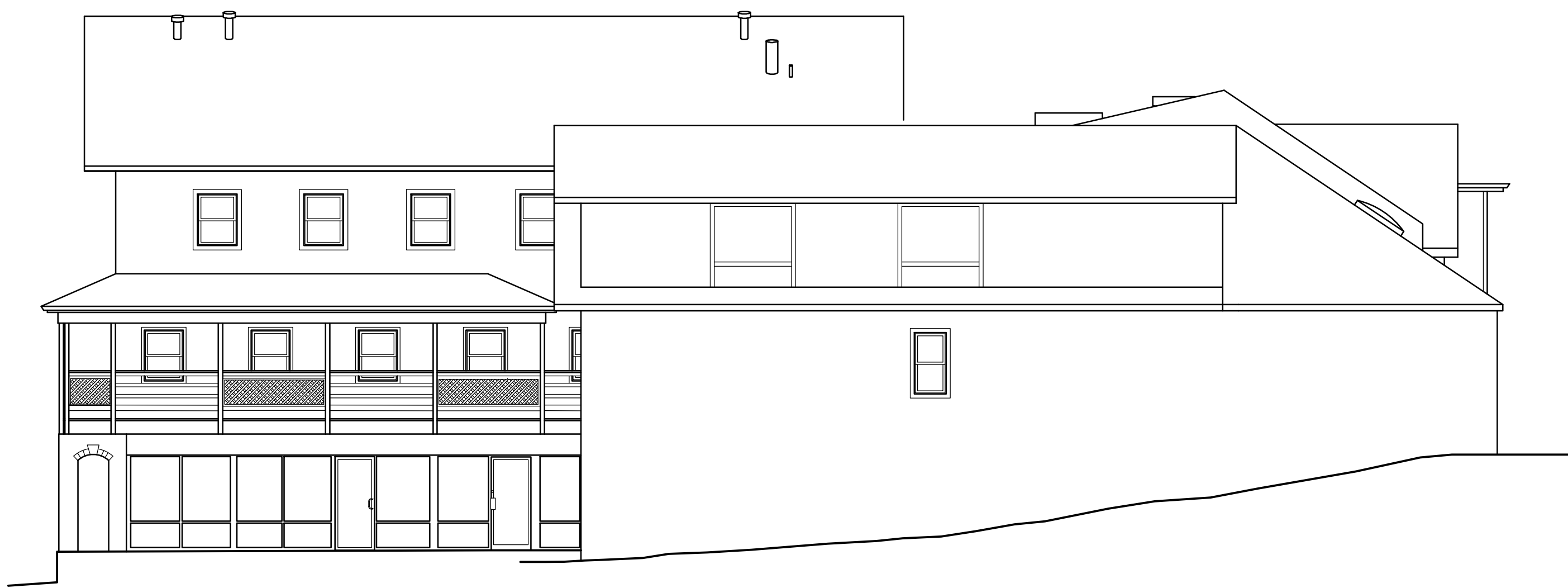
EAST ELEVATION - EXISTING

SCALE: 1/8" = 1'-0"



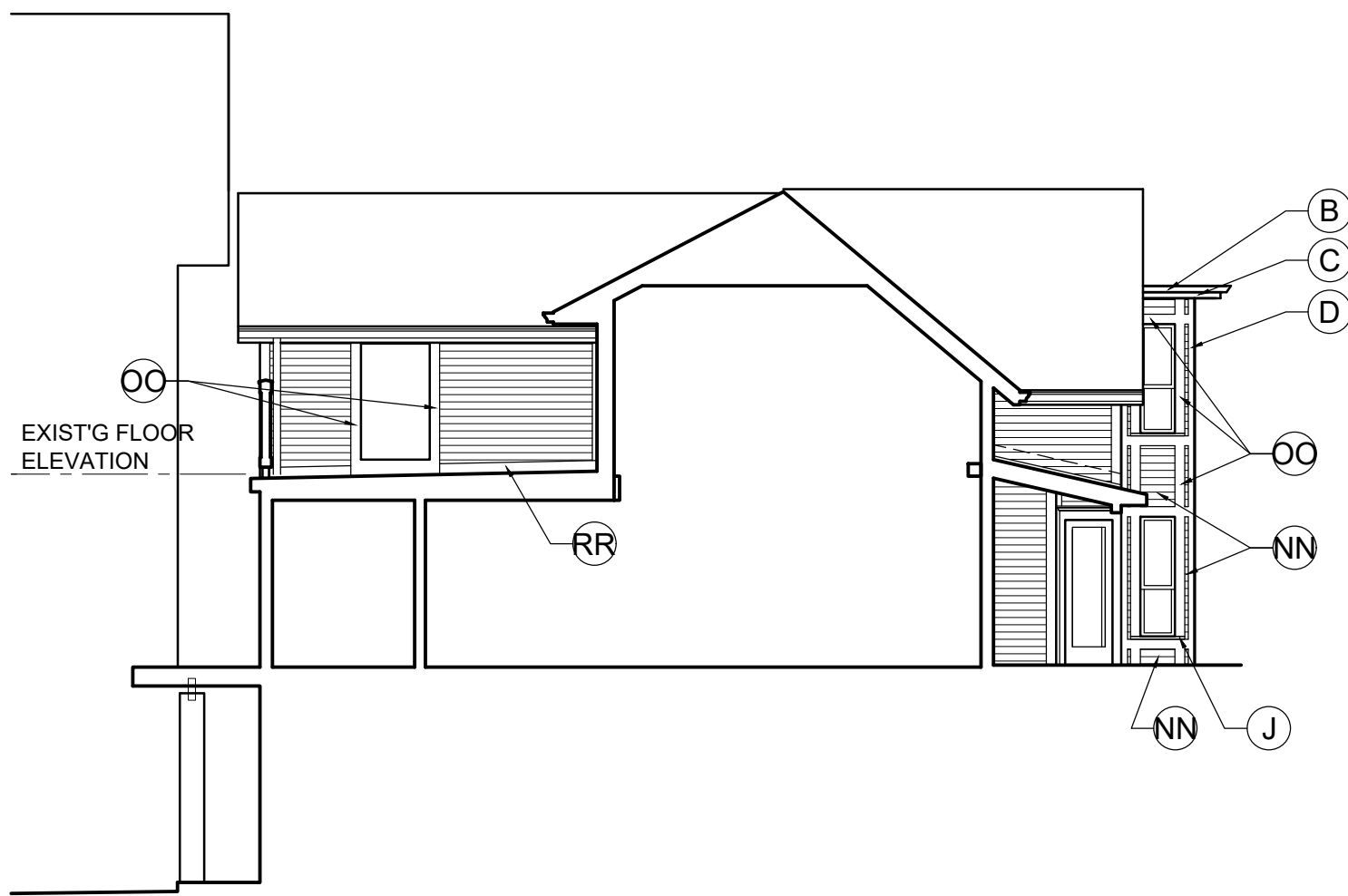
SOUTH ELEVATION - EXISTING

SCALE: 1/8" = 1'-0"



NORTH ELEVATION - EXISTING

SCALE: 1/8" = 1'-0"



SECTION/PARTIAL ELEVATION - PROPOSED

SCALE: 1/8" = 1'-0"

ELEVATION NOTES

- ALL EXTERIOR TRIM TO BE REDWOOD OR SMOOTH FINISH CEDAR, UNLESS NOTED OTHERWISE. ALL SURFACES OF TRIM TO BE PRIMED PRIOR TO INSTALLATION. SAW CUTS AND NAIL HOLES TO BE PRIMED.

- ALL GUTTERS AND DOWNSPOUTS TO CONNECT UNDERGROUND TO DRAIN TILE. IF EXISTING DRAIN TILE ARE TO BE USED, CONTRACTOR TO VERIFY THAT EXISTING DRAIN TILE ARE OPERATING PROPERLY PRIOR TO CONNECTING NEW DOWNSPOUTS

A. RAKE BOARD TO REMAIN
B. FASCIA TO REMAIN
C. GUTTER, 5" OCEE PROFILE
D. 5/4 X 6 CORNER BOARD - NEW
E. 5/4 X 6 RAKE TRIM - NEW
F. 5/4 X 3 INSIDE CORNER BOARD - NEW
G. REMOVE EXISTING SOFFIT
H. RAKE BOARD TO REMAIN
I. 5/4 X 6 TRIM WITH HEAD FLASHING
J. SILL, PROFILE TO MATCH HOLMES LUMBER, SILL 920019 2" X 1 1/2"

ELEVATION COLORS

72 N. HIGH	-	SW2836 QUARTER SAWN OAK
SIDING	-	SW2829 CLASSIC WHITE
TRIM, GUTTERS	-	SW2829 CLASSIC WHITE
DOWNSPOUTS	-	SW2829 CLASSIC WHITE
WINDOW FRAMES	-	SW2829 CLASSIC WHITE
84 N. HIGH - SOUTH	-	SW2828 ROYCROFT PEWTER
SIDING	-	SW2829 CLASSIC WHITE
TRIM, GUTTERS	-	SW2829 CLASSIC WHITE
DOWNSPOUTS	-	SW2829 CLASSIC WHITE
WINDOW FRAMES	-	SW2829 CLASSIC WHITE
84 N. HIGH - NORTH	-	SW2829 CLASSIC WHITE
STUCCO	-	SW2829 CLASSIC WHITE
TRIM, GUTTERS	-	SW2829 CLASSIC WHITE
DOWNSPOUTS	-	SW2829 CLASSIC WHITE
WINDOW FRAMES	-	SW2829 CLASSIC WHITE
EXTERIOR RAILINGS	-	SW7069 IRON ORE
ROOF	-	TIMBERLINE HDZ ASPHALT GAF SHINGLES
PEWTER GRAY	-	PEWTER GRAY
DECKING, RAILING TOP CAP	-	TIMBERTECH DRIFTWOOD

K. 5/4 X 10 POLY ASH TRIM WITH HEAD FLASHING
L. 5/4 TRIM OVER THE END OF EXISTING FIN
M. REDUCE OVERHANG OF EXISTING RAKE TRIM - SEE DET. 10
N. REMOVE EXISTING TRIM
O. REDUCE EXISTING SOFFIT DEPTH - SEE DET. 8
P. ADD TRIM, 5/4 X 6 TRIM BOARD
Q. STUCCO, TEXTURE TO MATCH EXISTING, PAINT APPROVED COLOR
R. REMOVE EXISTING STONE
S. REMOVE EXISTING AIR CONDITIONING UNITS
T. SKYLIGHT TO BE REMOVED
U. FLUE TO BE REMOVED
V. EXTEND EXISTING ROOF
W. MECHANICAL EQUIPMENT SCREEN
X. NEW RAKE TRIM - SEE DET. 10
Y. REPAIR EXISTING STUCCO AS REQUIRED. PAINT STUCCO APPROVED COLOR
Z. REMOVE RETURN - SEE DETAIL
AA. 1X TRIM, 3 1/2" EXPOSURE
BB. 1X TRIM, 2" EXPOSURE
CC. 4" TALL STONE SILL, FULL DEPTH
DD. SIDE WALL FLASHING, EXTEND UP BEHIND SIDING. HOLD SIDING 2" OFF ROOF SURFACE
EE. 3" X 4" PREFINISHED ALUMINUM DOWNSPOUT DOWNSPOUT BOOT
FF. 5/4 X 6 TRIM WITH PANEL MOLDING - SEE DET. 3
GG. FIBER CEMENT PANEL, SMOOTH FINISH. HARDI PANEL OR APPROVED EQUAL
HH. WINDOW TO MATCH DIMENSIONS OF EXISTING LOWER WINDOW IN NORTH BAY
II. WINDOW IN NORTH BAY
JJ. 5/4 POLY ASH CAP OVER EXISTING WING WALL
KK. 1X8 FASCIA
LL. FIBER CEMENT LAP SIDING, 7" EXPOSURE, SMOOTH FINISH, BLIND NAILED
MM. 5/4 X 8 TRIM WITH HEAD FLASHING. ALIGN WITH FASCIA
NN. DROP SIDING, WOOD MATCHING ORIGINAL, WITHIN BAY
OO. 5/4 X 6 TRIM
PP. SOFFIT LIGHTING TO BE REMOVED
QQ. SURFACE MOUNTED LIGHT TO BE REMOVED
RR. FLASHING PER RUBBER ROOFING MANUFACTURER
SS. 6" TALL LIMESTONE TRIM - SEE DET. 4
TT. 4" TALL LIMESTONE TRIM - SEE DET. 4
UU. SIGNAGE LIGHTING. G.C. COORDINATE WITH SIGNAGE PLACEMENT. SEE ELECTRICAL DRAWINGS FOR SPECIFICATIONS
VV. WALL MOUNTED LIGHT FIXTURE. SEE ELECTRICAL SPECIFICATIONS

WINDOWS

WINDOWS IN BAYS (4)
KAWNEER TR9700
ALUMINUM - SINGLE HUNG
WINDOWS - ALL OTHERS
KAWNEER TRIFAB VERSA GLAZE 451T
ALUMINUM - FIXED WINDOW

ENTRY DOORS

KAWNEER 500 TUFTLINE, WIDE STILE DOOR
ALUMINUM, 5" SIDE RAILS, 10" BOTTOM RAIL

THE RENOVATION OF 72 AND 84 N. HIGH STREET



Gary J. Alexander,
Architect

1265 Neil Avenue, Columbus, Ohio 43201
(614) 487-0637

M.P. REVIEW: 02/05/25
M.P. REVIEW
REVISIONS: 03/20/25
PERMIT: 09/17/25

REVISED: 11/10/25
REVISED: 01/13/26

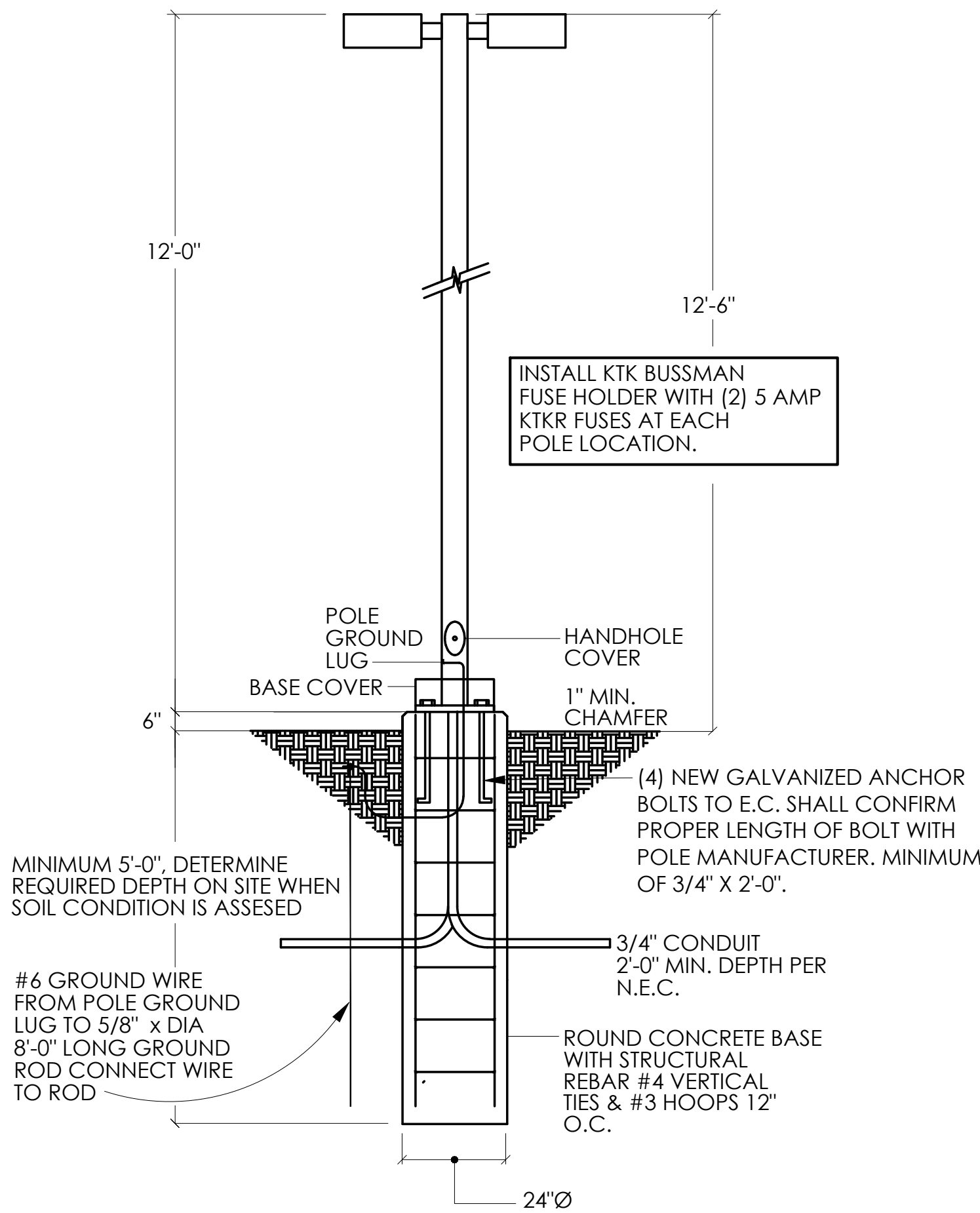
A-10

COPYRIGHT 2025

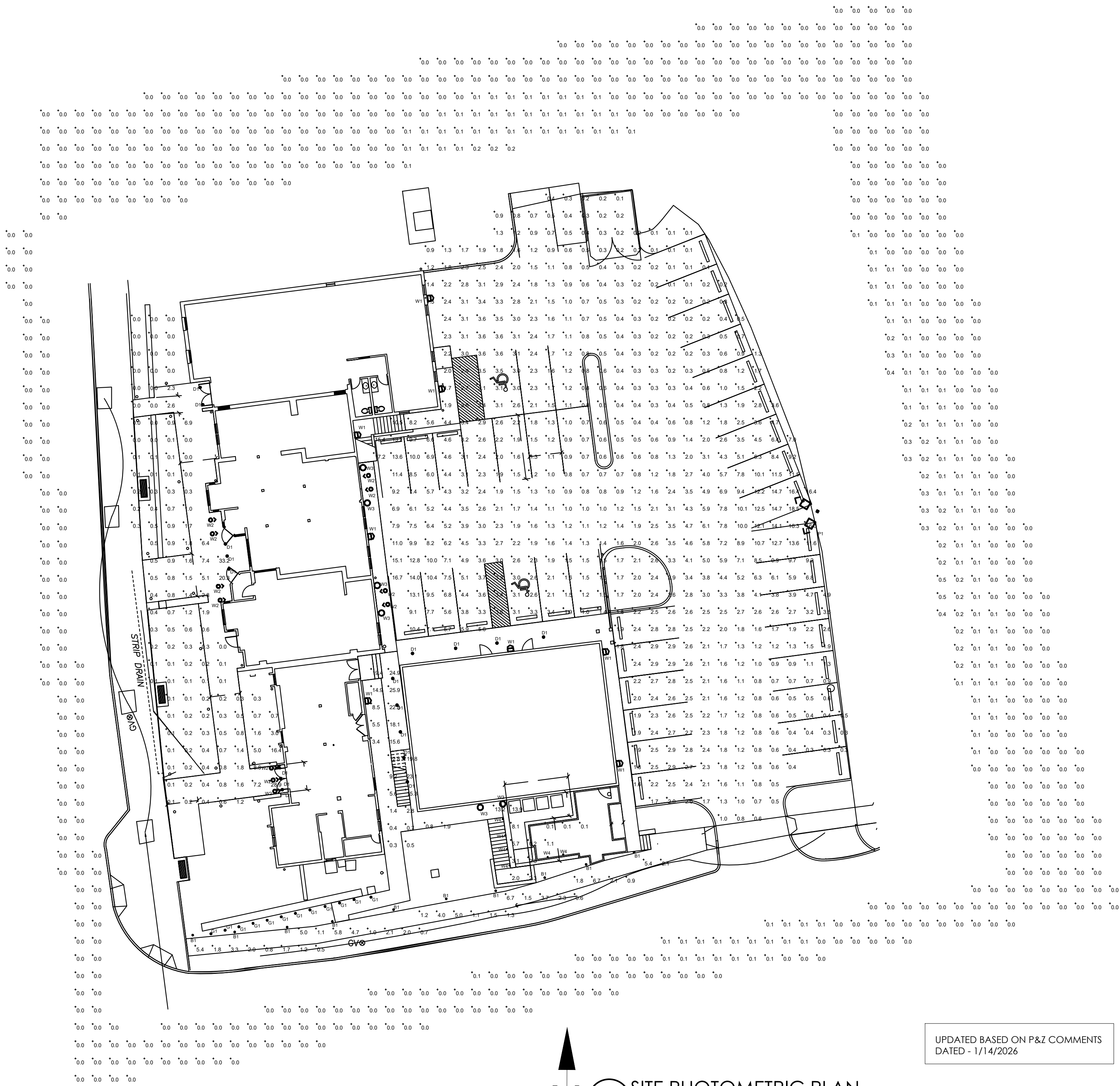
THE DRAWINGS, SPECIFICATIONS AND OTHER DOCUMENTS GENERATED SHALL REMAIN THE PROPERTY OF GARY J. ALEXANDER, ARCHITECT AND MAY NOT BE USED, DUPLICATED, OR ALTERED, WITHOUT WRITTEN CONSENT OF THE ARCHITECT.

Statistics						
Description	Symbol	Avg	Max	Min	Max/Min	Avg/Min
East Parking Lot	+	2.9 fc	18.5 fc	0.1 fc	185.0:1	29.0:1
South Walkway	+	2.6 fc	6.7 fc	0.5 fc	13.4:1	5.2:1
West (Storefront)	+	1.8 fc	35.5 fc	0.0 fc	N/A	N/A
Calc Zone #5	+	0.0 fc	0.5 fc	0.0 fc	N/A	N/A
Walkway Between Buildings	+	11.4 fc	25.9 fc	0.3 fc	86.3:1	38.0:1
Walkway/Stair S North Bldg	+	3.5 fc	13.9 fc	0.1 fc	139.0:1	35.0:1

LIGHT FIXTURE SCHEDULE						
FIXTURE ID	DESCRIPTION	LAMP TYPE	LAMP QTY	VOLTAGE	ADDITIONAL INFORMATION	
B1	DECORATIVE BOLLARD HADCO LIGHTING CAT#TB361-B-B5-10-W-A	550 LUMENS 25W 3000K	--	120	FIXTURE SPECIFIED AS BLACK HOUSING COLOR.	
D1	6" LED DOWNLIGHT LITHONIA LIGHTING CAT#LDN6-30-15-L06-AR-LSS-TRW-MVOLT-GZ10	1500 LUMENS 25W 3000K	--	120		
G1	IN-GROUND UP-LIGHT WAC LIGHTING CAT#5033-30-B8R	1000 LUMENS 15W 3000K	--	120	FIXTURE SPECIFIED AS BRONZE ON BRASS COLOR.	
P1	POLE LIGHT FIXTURE CAT# LITHONIA - DSX1LED-P5-30K-80CRI-T4M-MVOLT-SPA-PIR-HS-DBLXD POLE CAT# LITHONIA - SS-12-4C-DM29AS-DBLXD	17000 LUMENS PER HEAD 138W 3000K	--	MVOLT	FIXTURE AND POLE SPECIFIED AS BLACK HOUSING COLOR. 12'-0" TALL SQUARE STEEL POLE.	
W1	EXTERIOR WALL PACK LITHONIA LIGHTING - ARC2 LED P4 30K DBLXD	4000 LUMENS 30W 3000K	--	120	FIXTURE SPECIFIED AS BLACK HOUSING COLOR. COORDINATE WITH ARCHITECTURAL ELEVATIONS FOR MOUNTING HEIGHT.	
W2	EXTERIOR SIGN LIGHT 10" BOCK LIGHTING - SN610-G0-LAC03-GN23A-23	2750 LUMENS 23W 3000K	--	120	FIXTURE SPECIFIED AS BLACK HOUSING COLOR. COORDINATE WITH ARCHITECTURAL ELEVATIONS FOR MOUNTING HEIGHT.	
W3	EXTERIOR WALL SCENCE MAUVO CANYON 15.5" TALL	500 LUMENS 8W 3000K	--	120	FIXTURE SPECIFIED AS BLACK HOUSING COLOR. COORDINATE WITH ARCHITECTURAL ELEVATIONS FOR MOUNTING HEIGHT.	
W4	EXTERIOR STEP LIGHT SPJ LIGHTING CAT# SPJ-FB-275-3-B-2W-3000K-120V-38d	150 LUMENS 2W 3000K	--	120	FIXTURE SPECIFIED AS BLACK HOUSING COLOR. COORDINATE WITH ARCHITECTURAL ELEVATIONS FOR MOUNTING HEIGHT.	



A POLE BASE DETAIL FOR P1
SCALE: N.T.S.



UPDATED BASED ON P&Z COMMENTS
DATED - 1/14/2026

It is a violation of the law for any person, unless acting under the direction of a registered engineer, to alter these plans and specifications. This document contains proprietary information and shall not be used or reproduced, or its contents disclosed, in whole or in part, without the written consent of EM Engineering Group.

© EM Engineering Group, Ltd.

PROJECT NUMBER: 250023
DESIGN BY:

DUBLIN RD 72-84 NORTH HIGH ST.
INTERIOR AND EXTERIOR IMPROVEMENTS

72-84 N DUBLIN RD
DUBLIN OH 43017

DATE		
NOVEMBER 10, 2025		
REV#	DATE	DESCRIPTION



SITE LIGHTING PHOTOMETRIC PLAN

SP1.0



Ordering guide

example: TB361 A B5 12L N A

Product Code	Finish	Optics	Wattage	CCT	Voltage
TB361					
TB361 LED Bollard	A Black B White G Verde H Bronze J Green	B5 Type V Refractive Panels L0 Opal Panels KF Type V Cone	12L¹ 9.5W LED 10² 25W LED	N Neutral W Warm	A 120-277VAC E 120V

1. Only available with B5 or L0 options. Only available in Warm color temperature. Only available in E voltage (120V).
2. Only available with KF optics. Only available with A (120-277V) voltage.

Anchor & Bolts Templates (ordered separately)

12NC	Description
912400110296	ANCHOR BOLT, 1/2-13x15x3, 4/PK
912400128321	TEMP, AR, OB361/TB361

Specifications

Housing

356 HM high-strength, low-copper, proprietary cast aluminum alloy. Cast aluminum alloy base with 0.250" minimum wall thickness. All non-ferrous fasteners prevent corrosion and ensure longer life.

Finish

Color in accordance with the AAMA 2603 standard. Application of polyester powder coat paint (4 mils/100 microns) with ± 1 mils / 24 microns of tolerance. The Thermosetting resins provides a discoloration resistant finish in accordance with the ASTM D2244 standard, as well as luster retention in keeping with the ASTM D523 standard and humidity proof in accordance with the ASTM D2247 standard.

Optical Assembly

Type V Cone Optics. Optically designed, U.V. stabilized, injection molded, acrylic refractive panels. U.V. stabilized opal acrylic panels.

Lamping

Color Temperature (CCT): 4,000K nominal or 3,000K nominal. Approximately 50,000 hours of operational life (at 25°C ambient temp. and 70% lumen maintenance). >80 CRI. 25W 10 LED Module. 9.5W Philips LED EnduraLED lamp, medium base A19.

Electrical Assembly

Smart Select Electronic Driver 120 to 277 VAC input; 50-60Hz; auto-sensing. Operating start temperature -30°C (-22°F). 25 watts consumed (total fixture consumption). 25 watts consumed for 10 LED module (total fixture consumption). 4kv rated porcelain mini-can base. Nickel-plated screw shell with center contact.

Installation & Mounting

Internal cast aluminum base plate is secured to anchor foundation by four (4) 1/2" x 15" galvanized steel bolts and nuts on a 6"-8", or 9 3/4" bolt circle. (Order separately). Base of bollard can be leveled with over and under nut. Bollard housing is mounted directly to the plate with four (4) 5/16-18 stainless steel set screws.

Certifications

cETLus Listed for Canada and U.S. to the UL 1598 and UL8750 standards, suitable for Wet Locations. The quality systems of the facility where manufactured have been registered by UL to the ISO 9001 series standards. LM80 & LM79 tested.

Warranty

5-year limited warranty. Options available for extended warranties - contact factory. See signify.com/warranties for details and restrictions.

LED products manufacturing standard

The electronic components sensitive to electrostatic discharge (ESD) such as light emitting diodes (LEDs) are assembled in compliance with IEC61340 5 1 and ANSI/ESD S20.20 standards so as to eliminate ESD events that could decrease the useful life of the product.

Buy American Act of 1933 (BAA)

This product is manufactured in one of our US factories and, as of the date of this document, this product was considered a commercially available off-the-shelf (COTS) item meeting the requirements of the BAA. This BAA designation hereunder does not address (i) the applicability of, or availability of a waiver under, the Trade Agreements Act, or (ii) the "Buy America" domestic content requirements imposed on states, localities, and other non-federal entities as a condition of receiving funds administered by the Department of Transportation or other federal agencies. Prior to ordering, please visit www.signify.com/baa to view a current list of BAA-compliant products to confirm this product's current compliance.

Height

37 11/16" (96cm)

Width

10 3/8" (26cm)

Max Weight

40lbs

Anchor Rods (order separately)

Internal. (4) 1/2" dia. x 15" long (1.3cm x 38 cm)

Base Dimensions

8 3/4" x 10 3/8" (22.2cm x 26.4cm)

Bolt Circle

6"-8" (15cm-20cm) or 9 3/4" (25cm)



FEATURES & SPECIFICATIONS

INTENDED USE — Typical applications include corridors, lobbies, conference rooms and private offices.

CONSTRUCTION — Galvanized steel mounting/plaster frame; galvanized steel junction box with bottom-hinged access covers and spring latches. Reflectors are retained by torsion springs.

Vertically adjustable mounting brackets with commercial bar hangers provide 3-3/4" total adjustment.

Two combination 1/2"-3/4" and four 1/2" knockouts for straight-through conduit runs. Capacity: 8 (4 in, 4 out). No. 12 AWG conductors, rated for 90°C.

Accommodates 12"-24" joist spacing.

Passive cooling thermal management for 25°C standard; high ambient (40°C) option available. Light engine and drivers are accessible from above or below ceiling.

Max ceiling thickness 1-1/2".

OPTICS — LEDs are binned to a 3-step MacAdam Ellipse; 80 CRI minimum. 90 CRI optional.

LED light source concealed with diffusing optical lens.

General illumination lighting with 1.0 S/MH and 55° cutoff to source and source image.

Self-flanged anodized reflectors in specular, semi-specular, or matte diffuse finishes. Also available in white and black painted reflectors.

Controls (Optional) —

- Luminaire can be equipped with interface for nLight wired, allowing it to communicate over an nLight network. Couple with nLight-enabled sensors, power packs, or WallPods using CAT-5 cabling to create an nLight Control Zone. Link Control Zone to a Gateway directly or via a Bridge for remote status monitoring and control using SensorView software.

- Luminaire can be equipped with interface for nLight Air, allowing it to communicate over the wireless nLight control platform. Can be paired to other luminaires and wall switches through CLAIRITY+, a mobile app, which allows individual fixture control.

UGR — UGR is zero for fixtures aimed at nadir with a cut-off equal to or less than 60deg, per CIE 117-1996 Discomfort Glare in Interior Lighting.

ELECTRICAL — Multi-volt (120-277V, 50/60Hz) 0-10V dimming drivers mounted to junction box, 10% or 1% minimum dimming level available.

0-10V dimming fixture requires two (2) additional low-voltage wires to be pulled.

LUMEN MAINTENANCE — 70% lumen maintenance at 60,000 hours. L70/60,000 hours

LISTINGS — Certified to US and Canadian safety standards. Wet location standard (covered ceiling). IP55 rated. Drivers are RoHS compliant

GOVERNMENT PROCUREMENT — BAA — Product with the BAA option qualifies as a domestic end product under the Buy American Act as implemented in the FAR and DFARS. Product with the BAA option also qualifies as manufactured in the United States under DOT Buy America regulations.

BABA — Build America Buy America: Product with the BAA option also qualifies as produced in the United States under the definitions of the Build America, Buy America Act.

Please refer to www.acuitybrands.com/buy-american for additional information.

WARRANTY — 5-year limited warranty. This is the only warranty provided and no other statements in this specification sheet create any warranty of any kind. All other express and implied warranties are disclaimed.

Complete warranty terms located at: www.acuitybrands.com/support/warranty/terms-and-conditions

Note: Actual performance may differ as a result of end-user environment and application.

All values are design or typical values, measured under laboratory conditions at 25 °C.

Specifications subject to change without notice.

PERFORMANCE DATA

LDN6 3500K AR LSS 80CRI			
Nominal Lumens	Lumens	Wattage	Lm/W
500	527.9	5.8	90.5
750	758.1	8.9	85.1
1000	950.1	10.4	91.0
1500	1514	17.5	86.4
2000	2006	22.5	89.1
2500	2504	28.3	88.6
3000	3021	34.8	86.9
4000	4008	44.3	90.6
5000	4975	57.7	86.3

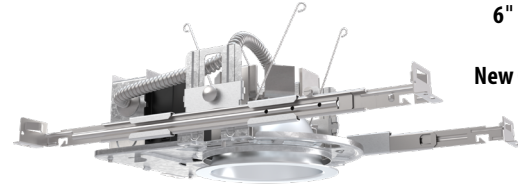
Notes

- Tested in accordance with IESNA LM-79-08.
- Tested to current IES and NEMA standards under stabilized laboratory conditions.
- CRI: 80 typical.



Catalog Number
Notes
Type

LDN6 STATIC WHITE



**6" Open and Wallwash LED
Non-IC
New Construction Downlight**

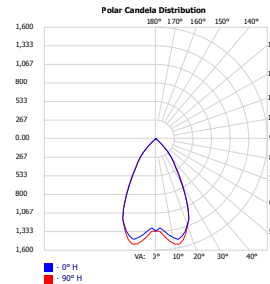


Open Trim

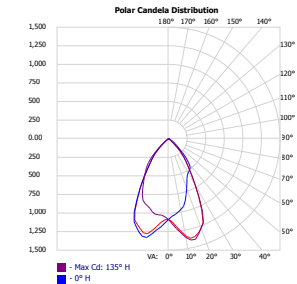


Wallwash Trim

DISTRIBUTIONS



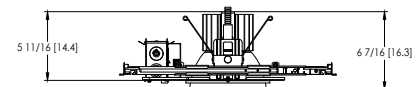
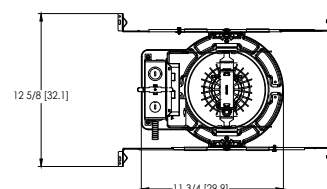
Open



Wallwash

DIMENSIONS

LDN6 500-3000 Lumens



Aperture: Ø 6-1/4" [15.9]
Ceiling Cutout: Ø 7-1/8" [18.1] Self-flanged
Overlap Trim: Ø 7-1/2" [19.1]

See page 4 for other fixture dimensions

ORDERING INFORMATION

Lead times will vary depending on options selected. Consult with your sales representative.

Example: LDN6 35/15 L06 AR LSS MVOLT EZ10

LDN6							
Series	Color temperature	Lumens ‡	Trim Style	Trim Color	Trim Finish	Flange Color ‡	Voltage
LDN6 6" round	27/ 2700K 30/ 3000K 35/ 3500K 40/ 4000K 50/ 5000K	05 500 lumens 07 750 lumens 10 1000 lumens 15 1500 lumens 20 2000 lumens 25 2500 lumens 30 3000 lumens 40 4000 lumens 50 5000 lumens	L06 Downlight LW6 Wallwash	AR Clear WR ‡ White BR ‡ Black TCPC ‡ Custom painted trim TRALTB ‡ RAL painted trim	LSS Semi-specular LD Matte diffuse LS Specular	TRW White painted flange TRBL Black painted flange FCPC Custom painted flange only FRALTB RAL painted flange only	MVOLT Multi-volt 120 120V 277 277V 347 ‡ 347V

Driver	Emergency ‡	Control Input ‡	Options
GZ10 0-10V driver dims to 10%	(blank) No Emergency Needed	(blank) No Control Input Needed	HAO ‡ High ambient option (40°C)
GZ1 0-10V driver dims to 1%	EL Battery pack (10W constant power), non-T20 compliant, integral test switch	SSAIR Wireless standalone embedded control by SensorSwitch	CP ‡ Chicago Plenum
D10 Minimum dimming 10% driver for use with SSAIR	ELR Battery pack (10W constant power), non-T20 compliant, remote test switch	NPP16D nLight® network power/relay pack with 0-10V dimming for non-eldoLED drivers (GZ10, GZ1).	RRL___ RELOC®-ready luminaire connectors enable a simple and consistent factory installed option across all ABL luminaire brands. Refer to RRL for complete nomenclature. Available only in RRLA, RRLB, RRLAE, and RRLC12S.
D1 Minimum dimming 1% driver for use with SSAIR	ELSD Self-diagnostic battery pack (10W constant power), non-T20 compliant, integral test switch	NPP16DER nLight® network power/relay pack with 0-10V dimming for non-eldoLED drivers (GZ10, GZ1). ER controls fixtures on emergency circuit.	BAA Buy America(n) Act and/or Build America Buy America Qualified
EZ1 0-10V eldoLED driver with smooth and flicker-free deep dimming performance down to 1%	ELRSD Self-diagnostic battery pack (10W constant power), non-T20 compliant, remote test switch	NPS80EZ nLight® dimming pack controls 0-10V eldoLED drivers (EZ1).	90CRI High CRI (90+)
EDAB eldoLED DALI SOLDRIIVE dim to dark	E10WCP Battery pack (10W constant power), T20 compliant, integral test switch	NPS80EZER nLight® dimming pack controls 0-10V eldoLED drivers (EZ1). ER controls fixtures on emergency circuit.	SF ‡ Single fuse
	E10WCPR Battery pack (10W constant power), T20 compliant, remote test switch	N80 nLight™ Lumen Compensation	
	E10WRSTAR Emergency battery pack, 10W with remote test switch and Iota STAR technology	NLTAIR2 nLight® Air enabled	
		NLTAIRER2 nLight® AIR Dimming Pack Wireless Controls. Controls fixtures on emergency circuit, not available with battery pack options	
		NLTAIREM2 nLight® AIR Dimming Pack Wireless Controls. UL924 Emergency Operation, via power interrupt detection. Available with battery pack options.	

‡ Option Value Ordering Restrictions

Option value	Restriction
Lumens	Overall height varies based on lumen package; refer to dimensional chart.
WR, BR	Not available with finishes.
347	Not available with emergency options.
SF	Must specify voltage 120V or 277V.
TRW, TRBL	Available with clear (AR) reflector only.
EL, ELR, ELSD, ELRSD, E10WCP, E10WCPR	12.5" of plenum depth or top access required for battery pack maintenance.
NPP16D, NPP16DER, NPS80EZ, NPS80EZER	Specify voltage. ER for use with generator supply EM power. Will require an emergency hot feed and normal hot feed. See UL 924 Sequence of Operation table.
N80	Fixture begins at 80% light level. Must be specified with NPS80EZ or NPS80EZ ER. Only available with EZ1 drivers.
NLTAIR, NLTAIR2, NLTAIRER2, NLTAIREM2	Not available with CP, NPS80EZ, NPS80EZER, NPP16D, NPP16DER or N80 options. Not recommended for metal ceiling installations.
HAO	Fixture height is 6.5" for all lumen packages with HAO.
CP	Must specify voltage for 3000lm and above. 5000lm with marked spacing 24 L x 24 W x 14 H. Not available with emergency battery pack option.
JOT	Must specify D10 or D1 driver. Not available with nLight options. Not available with CP. Not recommended for metal ceiling installation. Not for use with emergency backup power systems other than battery packs.
Reloc® Options	Refer to RRL specification sheet on acuitybrands.com for further details.
RRLAE	Commercial fixtures should disconnect the TSPL before unplugging the RRL so it does not go into discharge mode.
RRLC12S	RRLC12S option is to be used with the OnePass OCU, OCS, OD, OFC and OD for 0-24V integrated single-circuit or 0-10V low voltage controls applications. Not available with integral dimming sensors.
TRALTB, FRALTB	RALTB for pricing only. Replace with applicable RAL number and finish when ready to order. See the RAL BROCHURE for available color options. Not available with TCPC or FCPC
TCPC, FCPC	CPC options for pricing only. Custom color chip needs to be sent in to your Customer Resolution specialist before order can be processed. Click HERE for more details. Not available with TRAL or FRAL
E10WRSTAR	Not available with wet location, EC1, EC6, QDS, CP, 347V, NPS80EZ ER, NLTAIRER2, NLTAIREM2, AL03 & AL04 w/DALI, OR 2000-4500 lumens w/SSAIR. Top access installation or 17.5" plenum clearance required for roomside installation. Not available with integral test switch

Accessories: Order as separate catalog number.

EAC ISSM 375	Compact interruptible emergency AC power system	SCA6 Sloped Ceiling Adapter. Degree of slope must be specified (SD, 10D, 15D, 20D, 25D, 30D). Ex: SCA6 10D
EAC ISSM 125	Compact interruptible emergency AC power system	
GRA68 JZ	Oversized trim ring with 8" outside diameter	



Items marked by a shaded background qualify for the Design Select program and ship in 15 days or less. To learn more about Design Select, visit www.acuitybrands.com/designselect.

*See ordering tree for details

(Maximum order quantity for design select lead times is 112.)

Emergency Battery Pack Options - Field Installable

Battery Model Number	Wattage	Runtime (Minutes)	Lumen Output* @ 120 Lumens/Watt	Other
ILB CP07 2H A	7W	120	840	Storm Shelter / 2 Hour Runtime
ILB CP10 A	10W	90	1200	
ILBLP CP10 HE SD A+	10W	90	1200	Title 20, Self Diagnostic
ILBLP CP15 HE SD A+	15W	90	1800	Title 20, Self Diagnostic
ILB CP20 HE A	20W	90	2400	Title 20
ILB CP20 HE SD A	20W	90	2400	Title 20, Self Diagnostic
ILBHI CP10 HE SD A+	10W	90	1200	347-480V AC Input, Title 20, Self Diagnostic
ILBHI CP15 HE SD A+	15W	90	1800	347-480V AC Input, Title 20, Self Diagnostic

All the above are UL Listed products that are certified for field install external/remote to the fixture.

*Minimum delivered lumen output to assist in product selection for increased fixture mounting height.

The CP10 delivered emergency illumination outperforms legacy 1400 lumen fluorescent emergency ballast.

Please contact us at techsupport@iotaengineering.com for any Emergency Battery related questions.

COMPATIBLE 0-10V WALL-MOUNT DIMMERS		
MANUFACTURER	PART NO.	POWER BOOSTER AVAILABLE
Lutron®	Diva® DDTV	
	Diva® DVSCVT	
	Nova T® NTFTV	
	Nova® NFTV	
Leviton®	AWSMT-7DW	CN100
	AWSMG-7DW	PE300
	AMRMG-7DW	
	Leviton Centura Fluorescent Control System	
	IllumaTech® IP7 Series	
Synergy®	ISD BC	RDMFC
	SLD LPCS	
	Digital Equinox (DEQ BC)	
Douglas Lighting Controls	WPC-5721	
Entertainment Technology	Tap Glide TG600FAM120 (120V)	
	Tap Glide Heatsink TGH1500FAM120 (120V)	
	Oasis OA2000FAMU	
Honeywell	EL7315A1019	EL7305A1010 (optional)
	EL7315A1009	
HUNT Dimming	Preset slide: PS-010-IV and PS-010-WH	
	Preset slide: PS-010-3W-IV and PS-010-3W-WH	
	Preset slide, controls FD-010: PS-IFC-010-IV and PS-IFC-010-WH-120/277V	
	Preset slide, controls FD-010: PS-IFC-010-3W-IV and PS-IFC-010-3W-WH-120/277V	
	Remote mounted unit: FD-010	
Lehigh Electronic Products	Solitaire	PBX
PDM Electrical Products	WPC-5721	
Starfield Controls	TR61 with DALI interface port	RT03 DALI.net Router
WattStopper®	LS-4 used with LCD-101 and LCD-103	

A+ Capable Luminaire

This item is an A+ capable luminaire, which has been designed and tested to provide consistent color appearance and out-of-the-box control capability with simple commissioning when used with Acuity Brands controls products.

All configurations of this luminaire are calibrated and tested to meet the Acuity Brands' specification for chromatic consistency - including color rendering, color fidelity and color temperature tolerance around standard CIE chromaticity coordinates.

To learn more about A+, visit www.acuitybrands.com/aplus.

PHOTOMETRY

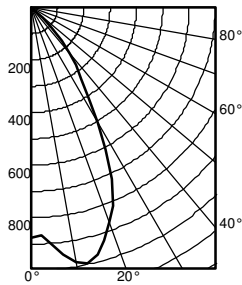
Distribution Curve

Distribution Data

Output Data

Illuminance Data at 30" Above Floor for
a Single Luminaire

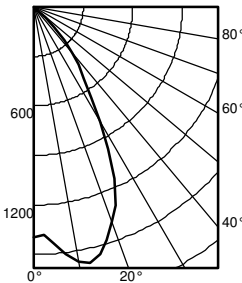
LDN6 35/10 L06AR, input watts: 10.44, delivered lumens: 987.10, LM/W = 94.54, spacing criterion at 0= 1.02, test no. ISF 30716P262.



Ave	Lumens	Zone	Lumens	% Lamp
0	876	0° - 30°	680.7	69.0
5	905	0° - 40°	895.0	90.7
15	971	0° - 60°	986.0	99.9
25	720	0° - 90°	987.0	100.0
35	330	90° - 120°	0.0	0.0
45	110	90° - 130°	0.0	0.0
55	1	90° - 150°	0.0	0.0
65	1	90° - 180°	0.0	0.0
75	0	0° - 180°	987.0	*100.0
85	0			
90	0			

		50% beam - 54.5°		10% beam - 82.2°	
Initial FC					
Mounting	Center				
Height	Beam	Diameter	FC	Diameter	FC
8.0	29.0	5.7	14.5	9.6	2.9
10.0	15.6	7.7	7.8	13.1	1.6
12.0	9.7	9.8	4.9	16.6	1.0
14.0	6.6	11.8	3.3	20.1	0.7
16.0	4.8	13.9	2.4	23.6	0.5

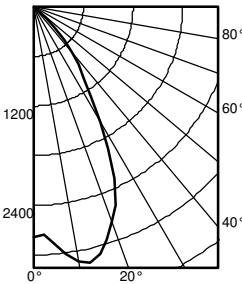
LDN6 35/15 L06AR, input watts: 17.52, delivered lumens: 1572.9, LM/W = 89.77, spacing criterion at 0= 1.02, test no. ISF 30716P265.



Ave	Lumens	Zone	Lumens	% Lamp
0	1396	0° - 30°	1084.6	69.0
5	1442	0° - 40°	1426.2	90.7
15	1547	0° - 60°	1571.3	99.9
25	1147	0° - 90°	1572.9	100.0
35	526	90° - 120°	0.0	0.0
45	176	90° - 130°	0.0	0.0
55	2	90° - 150°	0.0	0.0
65	1	90° - 180°	0.0	0.0
75	1	0° - 180°	1572.9	*100.0
85	0			
90	0			

		50% beam - 54.5°		10% beam - 82.2°	
Initial FC					
Mounting	Center				
Height	Beam	Diameter	FC	Diameter	FC
8.0	46.2	5.7	23.1	9.6	4.6
10.0	24.8	7.7	12.4	13.1	2.5
12.0	15.5	9.8	7.7	16.6	1.5
14.0	10.6	11.8	5.3	20.1	1.1
16.0	7.7	13.9	3.8	23.6	0.8

LDN6 35/30 L06AR, input watts: 34.75, delivered lumens: 3138.5, LM/W = 90.31, spacing criterion at 0= 1.02, test no. ISF 30716P274.



Ave	Lumens	Zone	Lumens	% Lamp
0	2786	0° - 30°	2164.3	69.0
5	2877	0° - 40°	2845.9	90.7
15	3087	0° - 60°	3135.3	99.9
25	2289	0° - 90°	3138.5	100.0
35	1049	90° - 120°	0.0	0.0
45	350	90° - 130°	0.0	0.0
55	5	90° - 150°	0.0	0.0
65	2	90° - 180°	0.0	0.0
75	1	0° - 180°	3138.5	*100.0
85	0			
90	0			

		50% beam - 54.5°		10% beam - 82.2°	
Initial FC					
Mounting	Center				
Height	Beam	Diameter	FC	Diameter	FC
8.0	92.1	5.7	46.1	9.6	9.2
10.0	49.5	7.7	24.8	13.1	5.0
12.0	30.9	9.8	15.4	16.6	3.1
14.0	21.1	11.8	10.5	20.1	2.1
16.0	15.3	13.9	7.6	23.6	1.5

HOW TO ESTIMATE DELIVERED LUMENS IN EMERGENCY MODE

Use the formula below to estimate the delivered lumens in emergency mode

$$\text{Delivered Lumens} = 1.25 \times P \times \text{LPW}$$

P = Output power of emergency driver. P = 10W

LPW = Lumen per watt rating of the luminaire. This information is available on the ABL luminaire spec sheet.

The LPW rating is also available at Designlight Consortium.

Notes

- Tested in accordance with IESNA LM-79-08.
- Tested to current IES and NEMA standards under stabilized laboratory conditions.
- CRI: 80 typical.

LUMEN OUTPUT MULTIPLIERS - FINISH

	Clear (AR)	White (WR)	Black (BR)
Specular (LS)	1.0	N/A	N/A
Semi-specular (LSS)	0.950	N/A	N/A
Matte diffuse (LD)	0.85	N/A	N/A
Painted	N/A	0.87	0.73

LUMEN OUTPUT MULTIPLIERS - CRI

80	1.0
90	0.874

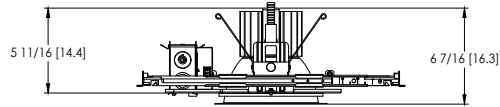
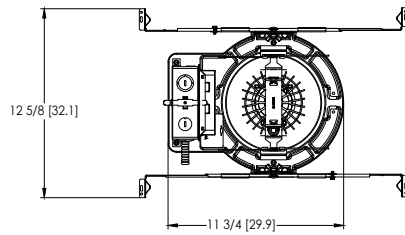
LUMEN OUTPUT MULTIPLIERS - CCT

	2700K	3000K	3500K	4000K	5000K
80CRI	0.950	0.966	1.000	1.025	1.101

LDN6

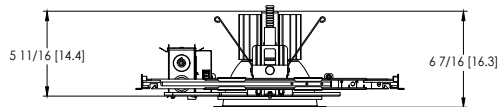
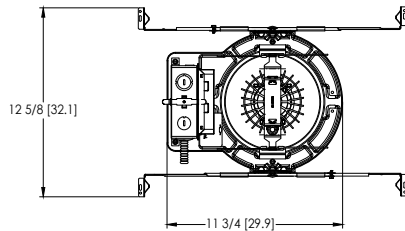
* All dimensions are inches (centimeters) unless otherwise noted.

LDN6 500-3000 Lumens



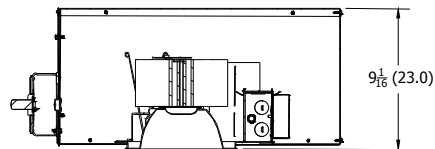
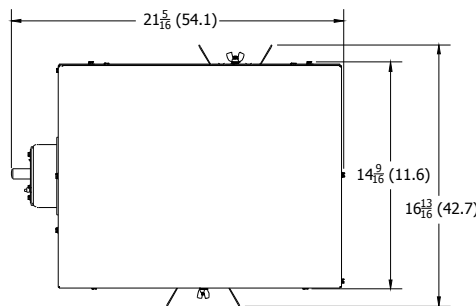
Aperture: \varnothing 6-1/4" [15.9]
Ceiling Cutout: \varnothing 7-1/8" [18.1] Self-flanged
Overlap Trim: \varnothing 7-1/2" [19.1]

LDN6 4000-5000 Lumens



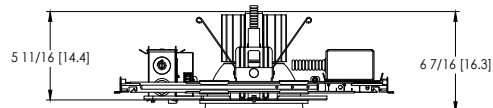
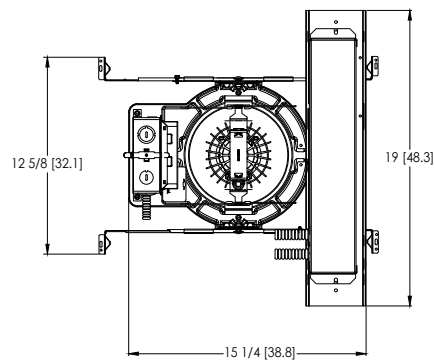
Marked Spacing: 24" x 24" x 10"
Aperture: \varnothing 6-1/4" [15.9]
Ceiling Cutout: \varnothing 7-1/8" [18.1] Self-flanged
Overlap Trim: \varnothing 7-1/2" [19.1]

LDN6 CP



Aperture: 6-1/4 (15.9)
Ceiling Opening: 7-1/8 (18.1)
Overlap Trim: 7-1/2 (19.1)

LDN6 EL



Marked Spacing above 3000lm: 24" x 24" x 10"
Aperture: \varnothing 6-1/4" [15.9]
Ceiling Cutout: \varnothing 7-1/8" [18.1] Self-flanged
Overlap Trim: \varnothing 7-1/2" [19.1]



Performance You Can Count On

SensorSwitch™ offers standalone wired and wireless lighting controls solutions designed for room-based applications. Our products offer reliable performance and ease of installation.

Sensorswitch.com

Wireless Embedded Controls



1. Install the luminaires with embedded controls
2. Insert the pairing tool into the pinhole on the wall switch; press and hold any button for 6 seconds.
3. Once paired, each fixture will individually dim down to 10% brightness. All products will be fully functional.



SensorSwitch
WSXA SSA

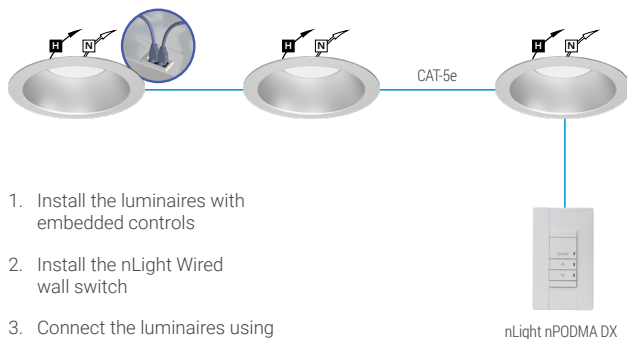


Single Lighting Controls Platform for Indoor & Outdoor Spaces

nLight® is your networked lighting controls platform, for indoor and outdoor applications, providing wired or wireless options. Scaling from room to campus-wide applications, it is the one platform that grows with your business today and tomorrow; to seamlessly address energy cost optimization, building code compliance, improved occupant comfort, and much more. nLight also interfaces with DALI®, BACnet®, DMX and additional third-party devices.

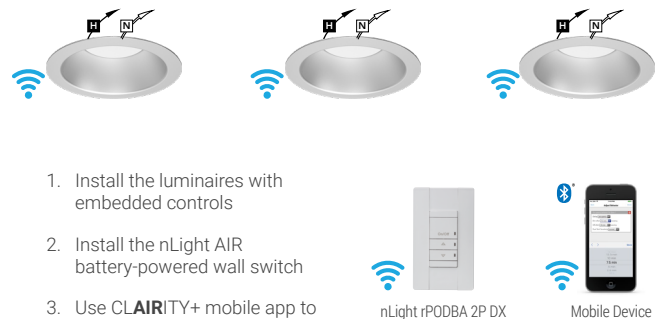
nlightcontrols.com

Wired Embedded Controls



1. Install the luminaires with embedded controls
2. Install the nLight Wired wall switch
3. Connect the luminaires using standard CAT-5e cables and the controls devices will automatically discover each other and work (plug and play)

Wireless Embedded Controls



1. Install the luminaires with embedded controls
2. Install the nLight AIR battery-powered wall switch
3. Use CLAIRITY+ mobile app to pair the fixtures with the wall switch and if desired, customize the sensor settings

UL924 Sequence of Operation

The below information applies to all nLight AIR devices with an EM option.

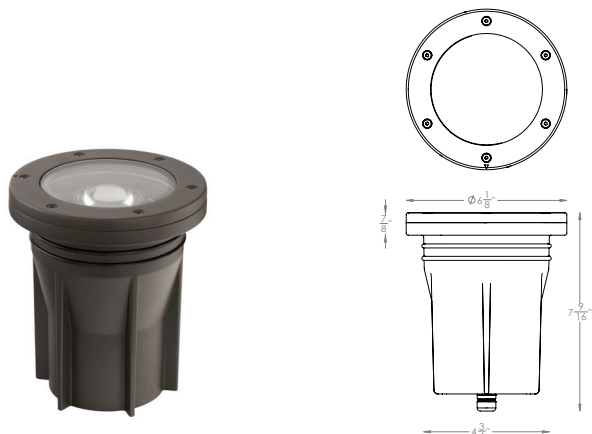
- EM devices will remain at their high-end trim and ignore wireless lighting control commands, unless a normal-power-sensed (NPS) broadcast is received at least every 8 seconds.
- Using the CLAIRITY+ mobile app, EM devices must be associated with a group that includes a normal power sensing device to receive NPS broadcasts.
- Only non-emergency rPP20, rLSXR, rSBOR, rSDGR, and nLight AIR luminaires with version 3.4 or later firmware can provide normal power sensing for EM devices. See specification sheets for control devices and luminaires for more information on options that support normal power sensing.

GRAND INGROUND 12V

5033

WAC

LANDSCAPE LIGHTING



Fixture Type:

Catalog Number:

Project:

Location:

PRODUCT DESCRIPTION

Landscape high output In-ground luminaire with dynamic beam changing and integral on-board dimming.

FEATURES

- Tiltable and adjustable beam angle
- Integral dimmer
- IP67 rated, protected from temporary immersion under water
- Drive over up to 4500lbs
- Solid diecast brass or corrosion resistant aluminum
- Available concrete pour kit
- 6' lead wire and direct burial gel filled wire nuts included
- Maintains constant lumen output against voltage drop
- UL 1838 Listed
- MLV dimmable with remote MLV dimmers

SPECIFICATIONS

Input: 9 - 15VAC (Transformer is required)
Power: 2W to 25W / 3VA - 33VA
Brightness: 105 lm to 2000 lm
Beam Angle: 20° to 60°
CRI: 85
Rated Life: 50,000 hours

IEC safety Standard	Walk over	Drive over
Resistance to static load test	Yes (1125lbs)	Yes (4496lbs)
Resistance to torque and shear loads test	N/A	Yes

ORDERING NUMBER

		Color Temp		Finish	
5033	3" Inground 12V	27	2700K	BZ	Bronze on Aluminum
		30	3000K	BBR	Bronze on Brass

5033-_____

Example: 5033-30BBR

wacighting.com

Phone (800) 526.2588

Fax (800) 526.2585

Headquarters, East Manufacturing Facility

44 Harbor Park Drive

Port Washington, NY 11050

South East Manufacturing Facility

1600 Distribution Ct

Lithia Springs, GA 30122

Central Manufacturing Facility

1700 South J Elmer Freeway, Ste 100

Cedar Hill, TX 75104

West Manufacturing Facility

1750 S Archibald Ave

Ontario, CA 91761

Rock Guard

Protects the fixture face



5830-GRD-BZ
Bronze on Aluminum

5830-GRD-BBR
Bronze on Brass

Concrete Pour Kit

*For installation in concrete
Five ½" NPT threaded holes, PC*



5830-PIP-PVC
Shown with temporary dense foam cap

Magnetic Transformers

*Stainless Steel, 12-15V output, IP65 rated, UL 1838 listed
See transformer spec sheet for details and its accessories*

9075-TRN-SS
75W Max

9150-TRN-SS
150W Max

9300-TRN-SS
300W Max

9600-TRN-SS
600W Max





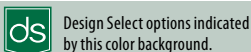
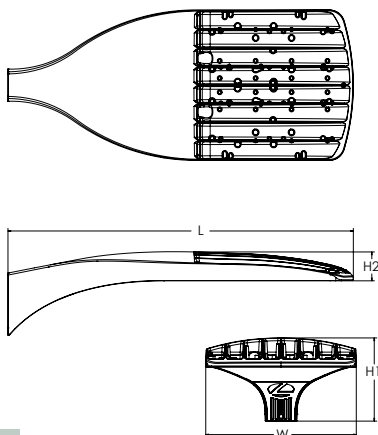
D-Series Size 1 LED Area Luminaire



d#series

Specifications

EPA:	0.69 ft ² (0.06 m ²)
Length:	32.71" (83.1 cm)
Width:	14.26" (36.2 cm)
Height H1:	7.88" (20.0 cm)
Height H2:	2.73" (6.9 cm)
Weight:	34 lbs (15.4 kg)



Catalog
Number

Notes

Type

Hit the Tab key or mouse over the page to see all interactive elements.

Introduction

The modern styling of the D-Series features a highly refined aesthetic that blends seamlessly with its environment. The D-Series offers the benefits of the latest in LED technology into a high performance, high efficacy, long-life luminaire.

The photometric performance results in sites with excellent uniformity, greater pole spacing and lower power density. D-Series outstanding photometry aids in reducing the number of poles required in area lighting applications with typical energy savings of 65% and expected service life of over 100,000 hours.



Items marked by a shaded background qualify for the Design Select program and ship in 15 days or less. To learn more about Design Select, visit www.acuitybrands.com/designselect.
*See ordering tree for details

Ordering Information

EXAMPLE: DSX1 LED P7 40K 70CRI T3M MVOLT SPA NLTAIR2 PIRHN DDBXD

DSX1 LED						
Series	LEDs	Color temperature ²	Color Rendering Index ²	Distribution	Voltage	Mounting
DSX1 LED	Forward optics P1 P6 P2 P7 P3 P8 P4 P9 P5 Rotated optics P10 ¹ P12 ¹ P11 ¹ P13 ¹	(this section 70CRI only) 30K 3000K 40K 4000K 50K 5000K 27K 2700K 30K 3000K 35K 3500K 40K 4000K 50K 5000K	70CRI 70CRI 70CRI 80CRI 80CRI 80CRI 80CRI 80CRI	AFR Automotive front row T1S Type I short T2M Type II medium T3M Type III medium T3LG Type III low glare ³ T4M Type IV medium T4LG Type IV low glare ³ TFTM Forward throw medium T5M Type V medium T5LG Type V low glare T5W Type V wide BLC3 Type III backlight control ³ BLC4 Type IV backlight control ³ LCCO Left corner cutoff ³ RCCO Right corner cutoff ³	MVOLT (120V-277V) ⁴ HVOLT (347V-480V) ^{5,6} XVOLT (277V - 480V) ^{7,8} 120 ^{16,26} 208 ^{16,26} 240 ^{16,26} 277 ^{16,26} 347 ^{16,26} 480 ^{16,26}	Shipped included SPA Square pole mounting (#8 drilling) RPA Round pole mounting (#8 drilling) SPA5 Square pole mounting #5 drilling ⁹ RPA5 Round pole mounting #5 drilling ⁹ SPA8N Square narrow pole mounting #8 drilling WBA Wall bracket ¹⁰ MA Mast arm adapter (mounts on 2 3/8" OD horizontal tenon)

Control options	Other options	Finish (required)
Shipped installed NLTAIR2 PIRHN nLight AIR gen 2 enabled with bi-level motion / ambient sensor, 8-40' mounting height, ambient sensor enabled at 2fc. ^{11,12,20,21} PIR High/low, motion/ambient sensor, 8-40' mounting height, ambient sensor enabled at 2fc. ^{11,12,20,21} PER NEMA twist-lock receptacle only (controls ordered separately) ¹⁴ PER5 Five-pin receptacle only (controls ordered separate) ^{14,21} PER7 Seven-pin receptacle only (controls ordered separate) ^{18,21} FAO Field adjustable output ^{15,21} BL30 Bi-level switched dimming, 30% ^{16,21} BL50 Bi-level switched dimming, 50% ^{16,21} DMG 0-10v dimming wires pulled outside fixture (for use with an external control, ordered separately) ¹⁷ DS Dual switching ^{18,19,21}	Shipped installed SPD20KV 20KV surge protection HS Houseside shield (black finish standard) ²² L90 Left rotated optics ¹ R90 Right rotated optics ¹ CCE Coastal Construction ²³ HA 50°C ambient operation ²⁴ BAA Buy America(n) Act and/or Build America Buy America Qualified SF Single fuse (120, 277, 347V) ²⁵ DF Double fuse (208, 240, 480V) ²⁶ Shipped separately EGSR External Glare Shield (reversible, field install required, matches housing finish) BSDB Bird Spikes (field install required)	DDBXD Dark Bronze DBLXD Black DNAXD Natural Aluminum DWHXD White DDBTXD Textured dark bronze DBLBXD Textured black DNATXD Textured natural aluminum DWHGXD Textured white



COMMERCIAL OUTDOOR

1 Acuity Way • Decatur, Georgia 30035 • Phone: 1-800-705-SERV (7378) • www.lithonia.com
© 2011-2025 Acuity Brands Lighting, Inc. All rights reserved.

DSX1-LED
Rev. 08/28/25
Page 1 of 10

Ordering Information

Accessories

Ordered and shipped separately.

DLL127F 1.5 JU	Photocell - SSL twist-lock (120-277V) ²⁵
DLL347F 1.5 CUL JU	Photocell - SSL twist-lock (347V) ²⁵
DLL480F 1.5 CUL JU	Photocell - SSL twist-lock (480V) ²⁵
DSHORT SBK	Shorting cap ²⁵
DSX1HS P#	House-side shield (enter package number 1-13 in place of #)
DSX1RPA (FINISH)	Round pole adapter (#8 drilling, specify finish)
DSXSPAS (FINISH)	Square pole adapter #5 drilling (specify finish)
DSXRPAS (FINISH)	Round pole adapter #5 drilling (specify finish)
DSX1EGSR (FINISH)	External glare shield (specify finish)
DSX1BSDB (FINISH)	Bird spike deterrent bracket (specify finish)

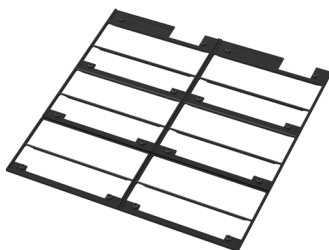
NOTES

- Rotated optics available with packages P10, P11, P12 and P13. Must be combined with option L90 or R90.
- 30K, 40K, and 50K available in 70CRI and 80CRI. 27K and 35K only available with 80CRI. Contact Technical Support for other possible combinations.
- T3LG, T4LG, BLC3, BLC4, LCCO, RCCO not available with option HS.
- MVOLT driver operates on any line voltage from 120-277V (50/60 Hz).
- HVOLT driver operates on any line voltage from 347-480V (50/60 Hz).
- HVOLT not available with package P1 and P10 when combined with option NLTAIR2 PIRHN or option PIR.
- XVOLT operates with any voltage between 277V and 480V (50/60 Hz).
- XVOLT not available in packages P1 or P10. XVOLT not available with P1, P2, P5, P7, P9, P10, P11 and P13 when combined with option NLTAIR2 PIRHN or PIR. XVOLT not available with fusing (SF or DF).
- SPA5 and RPA5 for use with #5 drilling only (Not for use with #8 drilling).
- WBA cannot be combined with Type 5 distributions plus photocell (PER).
- NLTAIR2 and PIRHN must be ordered together. For more information on nLight AIR2 visit this [link](#).
- NLTAIR2 PIRHN not available with other controls including PIR, PER, PER5, PER7, FAO, BL30, BL50, DMG and DS. NLTAIR2 PIRHN not available with P1 and P10 using HVOLT.
- PIR not available with NLTAIR2 PIRHN, PER, PER5, PER7, FAO BL30, BL50, DMG and DS.
- PER/PER5/PER7 not available with NLTAIR2 PIRHN, PIR, BL30, BL50, FAO, DMG and DS. Photocell ordered and shipped as a separate line item from Acuity Brands Controls. See accessories. Shorting Cap included.
- FAO not available with other dimming control options NLTAIR2 PIRHN, PIR, PER5, PER7, BL30, BL50, DMG and DS.
- BL30 and BL50 are not available with NLTAIR2 PIRHN, PIR, PER, PER5, PER7, FAO, DMG and DS. BL30 or BL50 must specify 120 or 277V.
- DMG not available with NLTAIR2 PIRHN, PIR, PER, PER5, PER7, BL30, BL50, FAO and DS.
- DS not available with NLTAIR2 PIRHN, PIR, PER, PER5, PER7, BL30, BL50, FAO and DMG.
- DS requires (2) separately switched circuits. DS provides 50/50 fixture operation via (2) different sets of leads using (2) drivers. DS only available with packages P8, P9, P10, P11, P12 and P13.
- Reference Motion Sensor Default Settings table on page 4 to see functionality.
- Reference Controls Options table on page 4.
- HS not available with T3LG, T4LG, BLC3, BLC4, LCCO and RCCO distribution. Also available as a separate accessory; see Accessories information.
- CCE option not available with option BS and EGSR. Contact Technical Support for availability.
- Option HA not available with performance packages P4, P5, P7, P8, P9 and P13.
- Requires luminaire to be specified with PER, PER5 or PER7 option. See Controls Table on page 4.
- Single fuse (SF) requires 120V, 277V, or 347V. Double fuse (DF) requires 208V, 240V or 480V. XVOLT not available with fusing (SF or DF).

Shield Accessories



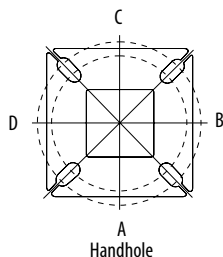
External Glare Shield (EGSR)



House Side Shield (HS)

Drilling

HANDHOLE ORIENTATION

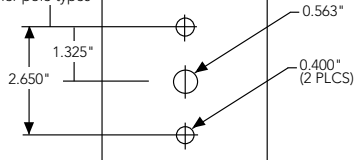


Handhole

Template #8

Top of Pole

1.75" for aluminum poles
2.75" for other pole types



Tenon Mounting Slipfitter

Tenon O.D.	Mounting	Single Unit	2 @ 180	2 @ 90	3 @ 90	3 @ 120	4 @ 90
2-3/8"	RPA	AS3-5 190	AS3-5 280	AS3-5 290	AS3-5 390	AS3-5 320	AS3-5 490
2-7/8"	RPA	AST25-190	AST25-280	AST25-290	AST25-390	AST25-320	AST25-490
4"	RPA	AST35-190	AST35-280	AST35-290	AST35-390	AST35-320	AST35-490

Mounting Option	Drilling Template	Single	2 @ 180	2 @ 90	3 @ 90	3 @ 120	4 @ 90
Head Location		Side B	Side B & D	Side B & C	Side B, C & D	Round Pole Only	Side A, B, C & D
Drill Nomenclature	#8	DM19AS	DM28AS	DM29AS	DM39AS	DM32AS	DM49AS
Minimum Acceptable Outside Pole Dimension							
SPA	#8	3.5"	3.5"	3.5"	3.5"		3.5"
RPA	#8	3"	3"	3"	3"	3"	3"
SPA5	#5	3"	3"	3"	3"		3"
RPA5	#5	3"	3"	3"	3"	3"	3"
SPA8N	#8	3"	3"	3"	3"		3"

DSX1 Area Luminaire - EPA

*Includes luminaire and integral mounting arm. Other tenons, arms, brackets or other accessories are not included in this EPA data.

Fixture Quantity & Mounting Configuration	Single DM19	2 @ 180 DM28	2 @ 90 DM29	3 @ 90 DM39	3 @ 120 DM32	4 @ 90 DM49
Mounting Type						
DSX1 with SPA	0.69	1.38	1.23	1.54	---	1.58
DSX1 with SPA5, SPA8N	0.70	1.40	1.30	1.66	---	1.68
DSX1 with RPA, RPA5	0.70	1.40	1.30	1.66	1.60	1.68
DSX1 with MA	0.83	1.66	1.50	2.09	2.09	2.09

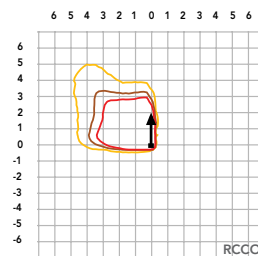
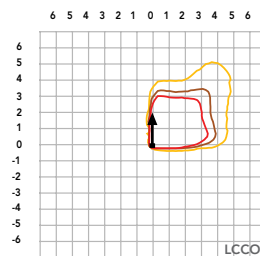
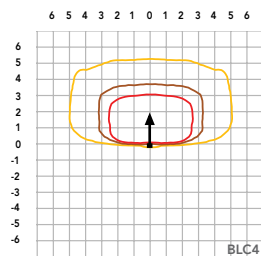
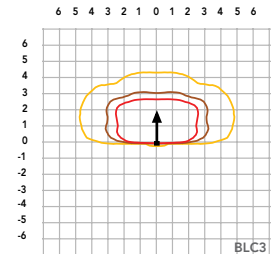
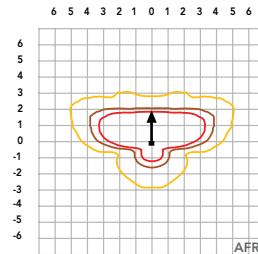
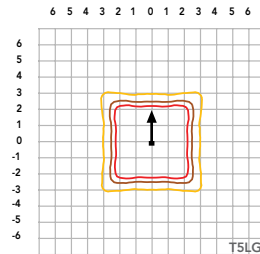
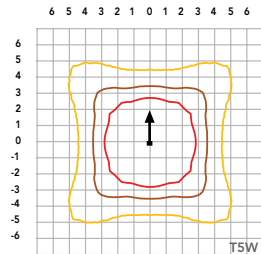
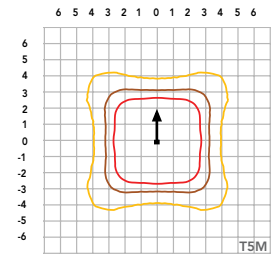
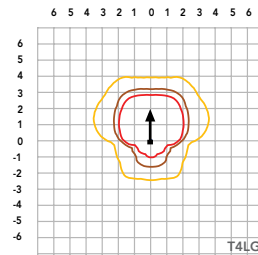
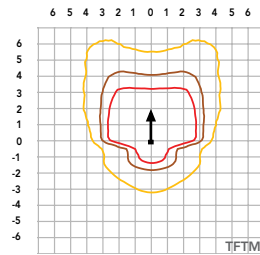
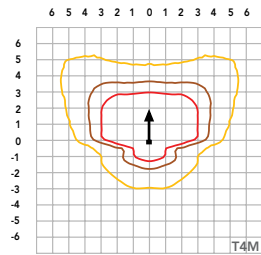
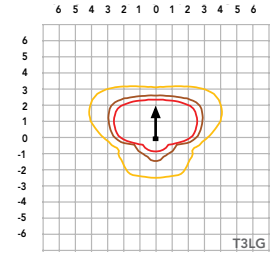
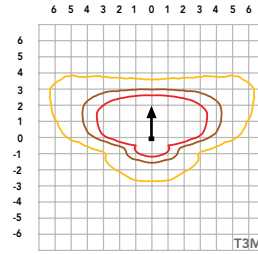
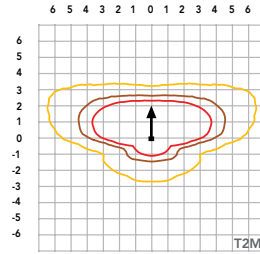
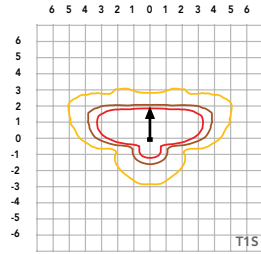
Photometric Diagrams

To see complete photometric reports or download .ies files for this product, visit Lithonia Lighting's [homepage](https://www.lithonia.com).

Isofootcandle plots for the DSX1 LED P9 40K 70CRI. Distances are in units of mounting height (25').

LEGEND

- 0.1 fc
- 0.5 fc
- 1.0 fc



Performance Data

Lumen Ambient Temperature (LAT) Multipliers

Use these factors to determine relative lumen output for average ambient temperatures from 0-40°C (32-104°F).

Ambient		Lumen Multiplier
0°C	32°F	1.04
5°C	41°F	1.04
10°C	50°F	1.03
15°C	59°F	1.02
20°C	68°F	1.01
25°C	77°F	1.00
30°C	86°F	0.99
35°C	95°F	0.98
40°C	104°F	0.97

Projected LED Lumen Maintenance

Data references the extrapolated performance projections for the platforms noted in a **25°C ambient**, based on 10,000 hours of LED testing (tested per IESNA LM-80-08 and projected per IESNA TM-21-11).

To calculate LLF, use the lumen maintenance factor that corresponds to the desired number of operating hours below. For other lumen maintenance values, contact factory.

Operating Hours	Lumen Maintenance Factor
0	1.00
25,000	0.95
50,000	0.90
100,000	0.81

FAO Dimming Settings

FAO Position	% Wattage	% Lumen Output
8	100%	100%
7	93%	95%
6	80%	85%
5	66%	73%
4	54%	61%
3	41%	49%
2	29%	36%
1	15%	20%

*Note: Calculated values are based on original performance package data. When calculating new values for given FAO position, use maximum published values by package listed on specification sheet (input watts and lumens by optic type).

Electrical Load

	Performance Package	LED Count	Drive Current (mA)	Wattage	Current (A)					
					120V	208V	240V	277V	347V	480V
Forward Optics (Non-Rotated)	P1	30	530	51	0.42	0.24	0.21	0.18	0.15	0.11
	P2	30	700	68	0.56	0.33	0.28	0.24	0.20	0.14
	P3	30	1050	104	0.85	0.49	0.43	0.37	0.29	0.21
	P4	30	1250	125	1.03	0.60	0.52	0.45	0.36	0.26
	P5	30	1400	142	1.15	0.66	0.58	0.50	0.40	0.29
	P6	40	1250	167	1.38	0.79	0.69	0.60	0.48	0.34
	P7	40	1400	188	1.54	0.89	0.77	0.67	0.53	0.38
	P8	60	1100	216	1.80	1.04	0.90	0.78	0.62	0.45
	P9	60	1400	279	2.31	1.33	1.15	1.00	0.80	0.58
Rotated Optics (Requires L90 or R90)	P10	60	530	101	0.84	0.49	0.42	0.37	0.29	0.21
	P11	60	700	135	1.12	0.65	0.56	0.49	0.39	0.28
	P12	60	1050	206	1.72	0.99	0.86	0.74	0.59	0.43
	P13	60	1400	279	2.30	1.33	1.15	1.00	0.79	0.57

LED Color Temperature / Color Rendering Multipliers

	70 CRI		80CRI		90CRI	
	Lumen Multiplier	Availability	Lumen Multiplier	Availability	Lumen Multiplier	Availability
5000K	102%	Standard	92%	Extended lead-time	71%	(see note)
4000K	100%	Standard	92%	Extended lead-time	67%	(see note)
3500K	100%	(see note)	90%	Extended lead-time	63%	(see note)
3000K	96%	Standard	87%	Extended lead-time	61%	(see note)
2700K	94%	(see note)	85%	Extended lead-time	57%	(see note)

Note: Some LED types are available as per special request. Contact Technical Support for more information.

Motion Sensor Default Settings

Option	Unoccupied Dimmed Level	High Level (when occupied)	Photocell Operation	Dwell Time	Ramp-up Time	Dimming Fade Rate
PIR	30%	100%	Enabled @ 2FC	7.5 min	3 sec	5 min
NLTAIR2 PIRHN	30%	100%	Enabled @ 2FC	7.5 min	3 sec	5 min

Controls Options

Nomenclature	Description	Functionality	Primary control device	Notes
FAO	Field adjustable output device installed inside the luminaire; wired to the driver dimming leads.	Allows the luminaire to be manually dimmed, effectively trimming the light output.	FAO device	Cannot be used with other controls options that need the 0-10V leads
DS (not available on DSX0)	Drivers wired independently for 50/50 luminaire operation	The luminaire is wired to two separate circuits, allowing for 50/50 operation.	Independently wired drivers	Requires two separately switched circuits. Consider nLight AIR as a more cost effective alternative.
PERS or PER7	Twist-lock photocell receptacle	Compatible with standard twist-lock photocells for dusk to dawn operation, or advanced control nodes that provide 0-10V dimming signals.	Twist-lock photocells such as DLL Elite or advanced control nodes such as ROAM.	Pins 4 & 5 to dimming leads on driver, Pins 6 & 7 are capped inside luminaire. Cannot be used with other controls options that need the 0-10V leads.
PIR	Motion sensor with integral photocell. Sensor suitable for 8' to 40' mounting height.	Luminaires dim when no occupancy is detected.	Acuity Controls rSBG	Cannot be used with other controls options that need the 0-10V leads.
NLTAIR2 PIRHN	nLight AIR enabled luminaire for motion sensing, photocell and wireless communication.	Motion and ambient light sensing with group response. Scheduled dimming with motion sensor over-ride when wirelessly connected to the nLight Eclipse.	nLight Air rSBG	nLight AIR sensors can be programmed and commissioned from the ground using the CIAIRity Pro app. Cannot be used with other controls options that need the 0-10V leads.
BL30 or BL50	Integrated bi-level device that allows a second control circuit to switch all light engines to either 30% or 50% light output	BLC device provides input to 0-10V dimming leads on all drivers providing either 100% or dimmed (30% or 50%) control by a secondary circuit	BLC UVOLT1	BLC device is powered off the 0-10V dimming leads, thus can be used with any input voltage from 120 to 480V



COMMERCIAL OUTDOOR

1 Acuity Way • Decatur, Georgia 30035 • Phone: 1-800-705-SERV (7378) • www.lithonia.com
© 2011-2025 Acuity Brands Lighting, Inc. All rights reserved.

DSX1-LED
Rev. 08/28/25
Page 4 of 10

Performance Data

Lumen Output

Lumen values are from photometric tests performed in accordance with IESNA LM-79-08. Data is considered to be representative of configurations shown within the tolerances described within LM-79. Contact factory for performance data on any configurations not shown here.

Forward Optics

Performance Package	System Watts	LED Count	Drive Current (mA)	Distribution Type	30K					40K					50K				
					(3000K, 70 CRI)					(4000K, 70 CRI)					(5000K, 70 CRI)				
					Lumens	B	U	G	LPW	Lumens	B	U	G	LPW	Lumens	B	U	G	LPW
P1	51W	30	530	T1S	7,776	1	0	2	153	8,104	1	0	2	159	8,262	1	0	2	162
				T2M	7,203	1	0	3	142	7,507	2	0	3	147	7,653	2	0	3	150
				T3M	7,287	1	0	3	143	7,594	1	0	3	149	7,742	1	0	3	152
				T3LG	6,509	1	0	1	128	6,783	1	0	1	133	6,916	1	0	1	136
				T4M	7,395	1	0	3	145	7,707	1	0	3	151	7,857	1	0	3	154
				T4LG	6,726	1	0	1	132	7,010	1	0	1	138	7,146	1	0	1	140
				TFTM	7,446	1	0	3	146	7,760	1	0	3	152	7,912	1	0	3	155
				T5M	7,609	3	0	2	149	7,930	3	0	2	156	8,084	3	0	2	159
				T5W	7,732	3	0	2	152	8,058	4	0	2	158	8,215	4	0	2	161
				T5LG	7,631	3	0	1	150	7,953	3	0	1	156	8,108	3	0	1	159
				BLC3	5,300	0	0	2	104	5,524	0	0	2	109	5,631	0	0	2	111
				BLC4	5,474	0	0	3	108	5,705	0	0	3	112	5,816	0	0	3	114
				RCCO	5,348	0	0	2	105	5,573	0	0	2	109	5,682	0	0	2	112
				LCCO	5,348	0	0	2	105	5,573	0	0	2	109	5,682	0	0	2	112
				AFR	7,776	1	0	2	153	8,104	1	0	2	159	8,262	1	0	2	162
P2	68W	30	700	T1S	9,997	1	0	2	147	10,418	1	0	2	154	10,621	1	0	2	157
				T2M	9,260	2	0	3	137	9,651	2	0	3	142	9,839	2	0	3	145
				T3M	9,368	2	0	3	138	9,763	2	0	3	144	9,953	2	0	3	147
				T3LG	8,368	1	0	2	123	8,721	1	0	2	129	8,891	1	0	2	131
				T4M	9,507	2	0	3	140	9,909	2	0	3	146	10,102	2	0	3	149
				T4LG	8,647	1	0	2	128	9,012	1	0	2	133	9,187	1	0	2	136
				TFTM	9,573	2	0	3	141	9,977	2	0	3	147	10,172	2	0	3	150
				T5M	9,782	4	0	2	144	10,195	4	0	2	150	10,393	4	0	2	153
				T5W	9,940	4	0	2	147	10,360	4	0	2	153	10,562	4	0	2	156
				T5LG	9,810	3	0	1	145	10,224	3	0	1	151	10,423	3	0	1	154
				BLC3	6,814	0	0	2	101	7,101	0	0	2	105	7,240	0	0	2	107
				BLC4	7,038	0	0	3	104	7,334	0	0	3	108	7,477	0	0	3	110
				RCCO	6,875	1	0	2	101	7,165	1	0	2	106	7,305	1	0	2	108
				LCCO	6,875	1	0	2	101	7,165	1	0	2	106	7,305	1	0	2	108
				AFR	9,997	1	0	2	147	10,418	1	0	2	154	10,621	1	0	2	157
P3	102W	30	1050	T1S	14,093	2	0	2	138	14,687	2	0	2	144	14,973	2	0	2	147
				T2M	13,055	2	0	3	128	13,605	2	0	3	133	13,871	2	0	3	136
				T3M	13,206	2	0	4	129	13,763	2	0	4	135	14,031	2	0	4	137
				T3LG	11,797	2	0	2	115	12,294	2	0	2	120	12,534	2	0	2	123
				T4M	13,403	2	0	4	131	13,968	2	0	4	137	14,241	2	0	4	139
				T4LG	12,190	2	0	2	119	12,704	2	0	2	124	12,952	2	0	2	127
				TFTM	13,496	2	0	4	132	14,065	2	0	4	138	14,339	2	0	4	140
				T5M	13,790	4	0	2	135	14,371	4	0	2	141	14,652	4	0	2	143
				T5W	14,013	4	0	3	137	14,605	4	0	3	143	14,889	4	0	3	146
				T5LG	13,830	3	0	2	135	14,413	3	0	2	141	14,694	3	0	2	144
				BLC3	9,606	0	0	2	94	10,011	0	0	2	98	10,206	0	0	2	100
				BLC4	9,921	0	0	3	97	10,340	0	0	3	101	10,541	0	0	3	103
				RCCO	9,692	1	0	2	95	10,101	1	0	2	99	10,298	1	0	2	101
				LCCO	9,692	1	0	2	95	10,101	1	0	2	99	10,298	1	0	2	101
				AFR	14,093	2	0	2	138	14,687	2	0	2	144	14,973	2	0	2	147

Performance Data

Lumen Output

Lumen values are from photometric tests performed in accordance with IESNA LM-79-08. Data is considered to be representative of configurations shown within the tolerances described within LM-79. Contact factory for performance data on any configurations not shown here.

Forward Optics

Performance Package	System Watts	LED Count	Drive Current (mA)	Distribution Type	30K					40K					50K				
					(3000K, 70 CRI)					(4000K, 70 CRI)					(5000K, 70 CRI)				
					Lumens	B	U	G	LPW	Lumens	B	U	G	LPW	Lumens	B	U	G	LPW
P4	124W	30	1250	T1S	16,416	2	0	3	132	17,109	2	0	3	138	17,442	2	0	3	141
				T2M	15,207	3	0	4	123	15,849	3	0	4	128	16,158	3	0	4	130
				T3M	15,383	2	0	4	124	16,032	2	0	4	129	16,345	2	0	4	132
				T3LG	13,742	2	0	2	111	14,321	2	0	2	116	14,600	2	0	2	118
				T4M	15,613	2	0	4	126	16,272	2	0	4	131	16,589	2	0	4	134
				T4LG	14,200	2	0	2	115	14,799	2	0	2	119	15,087	2	0	2	122
				TFTM	15,721	2	0	4	127	16,384	2	0	4	132	16,703	2	0	4	135
				T5M	16,063	4	0	2	130	16,741	4	0	2	135	17,067	4	0	2	138
				T5W	16,324	5	0	3	132	17,013	5	0	3	137	17,344	5	0	3	140
				T5LG	16,110	3	0	2	130	16,790	4	0	2	135	17,117	4	0	2	138
				BLC3	11,190	0	0	3	90	11,662	0	0	3	94	11,889	0	0	3	96
				BLC4	11,557	0	0	3	93	12,044	0	0	3	97	12,279	0	0	3	99
				RCCO	11,291	1	0	3	91	11,767	1	0	3	95	11,996	1	0	3	97
				LCCO	11,291	1	0	3	91	11,767	1	0	3	95	11,996	1	0	3	97
				AFR	16,416	2	0	3	132	17,109	2	0	3	138	17,442	2	0	3	141
P5	138W	30	1400	T1S	18,052	2	0	3	131	18,814	2	0	3	136	19,180	2	0	3	139
				T2M	16,723	3	0	4	121	17,428	3	0	4	126	17,768	3	0	4	129
				T3M	16,917	3	0	4	122	17,630	3	0	4	128	17,974	3	0	4	130
				T3LG	15,111	2	0	2	109	15,749	2	0	2	114	16,055	2	0	2	116
				T4M	17,169	3	0	5	124	17,893	3	0	5	130	18,242	3	0	5	132
				T4LG	15,615	2	0	2	113	16,274	2	0	2	118	16,591	2	0	2	120
				TFTM	17,288	2	0	4	125	18,017	2	0	5	130	18,368	3	0	5	133
				T5M	17,664	5	0	3	128	18,410	5	0	3	133	18,768	5	0	3	136
				T5W	17,951	5	0	3	130	18,708	5	0	3	135	19,073	5	0	3	138
				T5LG	17,716	4	0	2	128	18,463	4	0	2	134	18,823	4	0	2	136
				BLC3	12,305	0	0	3	89	12,824	0	0	3	93	13,074	0	0	3	95
				BLC4	12,709	0	0	4	92	13,245	0	0	4	96	13,503	0	0	4	98
				RCCO	12,416	1	0	3	90	12,940	1	0	3	94	13,192	1	0	3	95
				LCCO	12,416	1	0	3	90	12,940	1	0	3	94	13,192	1	0	3	95
				AFR	18,052	2	0	3	131	18,814	2	0	3	136	19,180	2	0	3	139
P6	165W	40	1250	T1S	21,031	2	0	3	127	21,918	2	0	3	133	22,345	2	0	3	135
				T2M	19,482	3	0	4	118	20,303	3	0	4	123	20,699	3	0	4	125
				T3M	19,708	3	0	5	119	20,539	3	0	5	124	20,939	3	0	5	127
				T3LG	17,604	2	0	2	107	18,347	2	0	2	111	18,704	2	0	2	113
				T4M	20,001	3	0	5	121	20,845	3	0	5	126	21,251	3	0	5	129
				T4LG	18,191	2	0	2	110	18,959	2	0	2	115	19,328	2	0	2	117
				TFTM	20,140	3	0	5	122	20,989	3	0	5	127	21,398	3	0	5	129
				T5M	20,579	5	0	3	125	21,447	5	0	3	130	21,865	5	0	3	132
				T5W	20,912	5	0	3	127	21,795	5	0	3	132	22,219	5	0	3	134
				T5LG	20,638	4	0	2	125	21,509	4	0	2	130	21,928	4	0	2	133
				BLC3	14,335	0	0	3	87	14,940	0	0	3	90	15,231	0	0	3	92
				BLC4	14,805	0	0	4	90	15,430	0	0	4	93	15,731	0	0	4	95
				RCCO	14,464	1	0	3	88	15,074	1	0	3	91	15,368	1	0	3	93
				LCCO	14,464	1	0	3	88	15,074	1	0	3	91	15,368	1	0	3	93
				AFR	21,031	2	0	3	127	21,918	2	0	3	133	22,345	2	0	3	135

Performance Data

Lumen Output

Lumen values are from photometric tests performed in accordance with IESNA LM-79-08. Data is considered to be representative of configurations shown within the tolerances described within LM-79. Contact factory for performance data on any configurations not shown here.

Forward Optics

Performance Package	System Watts	LED Count	Drive Current (mA)	Distribution Type	30K					40K					50K				
					(3000K, 70 CRI)					(4000K, 70 CRI)					(5000K, 70 CRI)				
					Lumens	B	U	G	LPW	Lumens	B	U	G	LPW	Lumens	B	U	G	LPW
P7	184W	40	1400	T1S	22,741	2	0	3	123	23,700	2	0	3	129	24,162	3	0	3	131
				T2M	21,066	3	0	4	114	21,955	3	0	4	119	22,383	3	0	4	121
				T3M	21,311	3	0	5	116	22,210	3	0	5	120	22,642	3	0	5	123
				T3LG	19,036	2	0	2	103	19,839	2	0	3	108	20,226	2	0	3	110
				T4M	21,628	3	0	5	117	22,541	3	0	5	122	22,980	3	0	5	125
				T4LG	19,671	2	0	2	107	20,501	2	0	3	111	20,900	2	0	3	113
				TFTM	21,778	3	0	5	118	22,697	3	0	5	123	23,139	3	0	5	125
				T5M	22,252	5	0	3	121	23,191	5	0	3	126	23,643	5	0	3	128
				T5W	22,613	5	0	3	123	23,567	5	0	4	128	24,027	5	0	4	130
				T5LG	22,317	4	0	2	121	23,258	4	0	2	126	23,712	4	0	2	129
				BLC3	15,501	0	0	3	84	16,155	0	0	4	88	16,470	0	0	4	89
				BLC4	16,010	0	0	4	87	16,685	0	0	4	90	17,010	0	0	4	92
				RCCO	15,641	1	0	3	85	16,301	1	0	3	89	16,619	1	0	3	90
				LCCO	15,641	1	0	3	85	16,301	1	0	3	89	16,619	1	0	3	90
				AFR	22,741	2	0	3	123	23,700	2	0	3	129	24,162	3	0	3	131
P8	216W	60	1100	T1S	28,701	3	0	3	133	29,912	3	0	4	139	30,495	3	0	4	141
				T2M	26,587	3	0	5	123	27,709	3	0	5	128	28,249	3	0	5	131
				T3M	26,895	3	0	5	125	28,030	3	0	5	130	28,576	3	0	5	132
				T3LG	24,025	3	0	3	111	25,038	3	0	3	116	25,526	3	0	3	118
				T4M	27,296	3	0	5	127	28,448	3	0	5	132	29,002	3	0	5	134
				T4LG	24,826	3	0	3	115	25,873	3	0	3	120	26,378	3	0	3	122
				TFTM	27,485	3	0	5	127	28,645	3	0	5	133	29,203	3	0	5	135
				T5M	28,084	5	0	4	130	29,269	5	0	4	136	29,839	5	0	4	138
				T5W	28,539	5	0	4	132	29,743	5	0	4	138	30,323	5	0	4	141
				T5LG	28,165	4	0	2	131	29,354	4	0	2	136	29,926	4	0	2	139
				BLC3	19,563	0	0	4	91	20,388	0	0	4	94	20,786	0	0	4	96
				BLC4	20,205	0	0	5	94	21,057	0	0	5	98	21,468	0	0	5	99
				RCCO	19,740	1	0	4	91	20,572	1	0	4	95	20,973	1	0	4	97
				LCCO	19,740	1	0	4	91	20,572	1	0	4	95	20,973	1	0	4	97
				AFR	28,701	3	0	3	133	29,912	3	0	4	139	30,495	3	0	4	141
P9	277W	60	1400	T1S	34,819	3	0	4	126	36,288	3	0	4	131	36,996	3	0	4	134
				T2M	32,255	3	0	5	116	33,616	3	0	5	121	34,271	3	0	5	124
				T3M	32,629	3	0	5	118	34,006	3	0	5	123	34,668	3	0	5	125
				T3LG	29,146	3	0	3	105	30,376	3	0	4	110	30,968	3	0	4	112
				T4M	33,116	3	0	5	120	34,513	3	0	5	125	35,185	3	0	5	127
				T4LG	30,119	3	0	3	109	31,389	3	0	4	113	32,001	3	0	4	116
				TFTM	33,345	3	0	5	120	34,751	3	0	5	125	35,429	3	0	5	128
				T5M	34,071	5	0	4	123	35,509	5	0	4	128	36,201	5	0	4	131
				T5W	34,624	5	0	4	125	36,084	5	0	4	130	36,788	5	0	4	133
				T5LG	34,170	5	0	3	123	35,612	5	0	3	129	36,306	5	0	3	131
				BLC3	23,734	0	0	4	86	24,735	0	0	4	89	25,217	0	0	4	91
				BLC4	24,513	0	0	5	88	25,547	0	0	5	92	26,045	0	0	5	94
				RCCO	23,948	1	0	4	86	24,958	1	0	4	90	25,445	1	0	4	92
				LCCO	23,948	1	0	4	86	24,958	1	0	4	90	25,445	1	0	4	92
				AFR	34,819	3	0	4	126	36,288	3	0	4	131	36,996	3	0	4	134

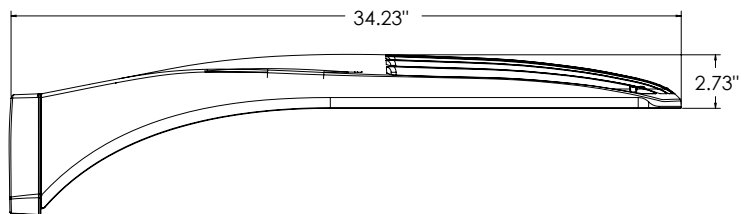
Performance Data

Lumen Output

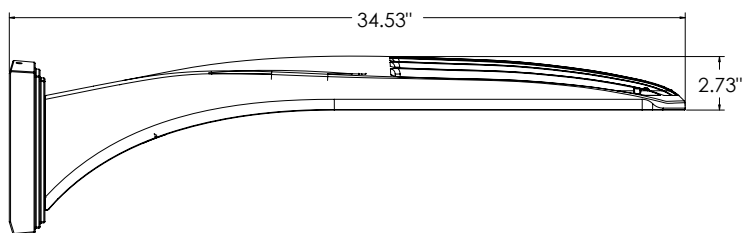
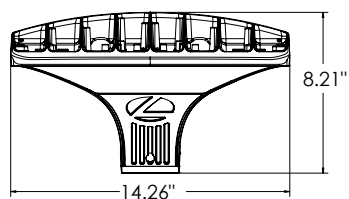
Lumen values are from photometric tests performed in accordance with IESNA LM-79-08. Data is considered to be representative of configurations shown within the tolerances described within LM-79. Contact factory for performance data on any configurations not shown here.

Rotated Optics																			
Performance Package	System Watts	LED Count	Drive Current (mA)	Distribution Type	30K					40K					50K				
					(3000K, 70 CRI)					(4000K, 70 CRI)					(5000K, 70 CRI)				
					Lumens	B	U	G	LPW	Lumens	B	U	G	LPW	Lumens	B	U	G	LPW
P10	101W	60	530	T1S	15,164	3	0	3	150	15,803	3	0	3	156	16,112	3	0	3	159
				T2M	14,047	4	0	4	139	14,640	4	0	4	145	14,925	4	0	4	147
				T3M	14,208	4	0	4	140	14,807	4	0	4	146	15,096	4	0	4	149
				T3LG	12,693	3	0	3	125	13,229	3	0	3	131	13,487	3	0	3	133
				T4M	14,420	4	0	4	142	15,028	4	0	4	148	15,321	4	0	4	151
				T4LG	13,115	3	0	3	129	13,668	3	0	3	135	13,934	3	0	3	138
				TFTM	14,522	4	0	4	143	15,134	4	0	4	149	15,429	4	0	4	152
				T5M	14,836	4	0	2	146	15,462	4	0	2	153	15,763	4	0	2	156
				T5W	15,076	4	0	3	149	15,712	5	0	3	155	16,019	5	0	3	158
				T5LG	14,879	3	0	2	147	15,507	3	0	2	153	15,809	3	0	2	156
				BLC3	10,335	3	0	3	102	10,771	4	0	4	106	10,981	4	0	4	108
				BLC4	10,674	4	0	4	105	11,124	4	0	4	110	11,341	4	0	4	112
				RCCO	10,429	1	0	2	103	10,869	1	0	2	107	11,080	1	0	2	109
				LCCO	10,429	1	0	2	103	10,869	1	0	2	107	11,080	1	0	2	109
				AFR	15,164	3	0	3	150	15,803	3	0	3	156	16,112	3	0	3	159
P11	135W	60	700	T1S	19,437	4	0	4	144	20,257	4	0	4	150	20,651	4	0	4	153
				T2M	18,005	4	0	4	133	18,765	4	0	4	139	19,131	4	0	4	142
				T3M	18,211	4	0	4	135	18,980	4	0	4	141	19,350	4	0	4	143
				T3LG	16,270	3	0	3	121	16,957	3	0	3	126	17,287	4	0	4	128
				T4M	18,483	4	0	4	137	19,263	5	0	5	143	19,638	5	0	5	146
				T4LG	16,810	3	0	3	125	17,519	3	0	3	130	17,861	3	0	3	132
				TFTM	18,614	4	0	4	138	19,399	4	0	4	144	19,777	5	0	5	147
				T5M	19,017	5	0	3	141	19,819	5	0	3	147	20,205	5	0	3	150
				T5W	19,325	5	0	3	143	20,140	5	0	3	149	20,533	5	0	3	152
				T5LG	19,072	4	0	2	141	19,876	4	0	2	147	20,264	4	0	2	150
				BLC3	13,247	4	0	4	98	13,806	4	0	4	102	14,075	4	0	4	104
				BLC4	13,682	4	0	4	101	14,259	4	0	4	106	14,537	4	0	4	108
				RCCO	13,367	1	0	3	99	13,931	1	0	3	103	14,203	1	0	3	105
				LCCO	13,367	1	0	3	99	13,931	1	0	3	103	14,203	1	0	3	105
				AFR	19,437	4	0	4	144	20,257	4	0	4	150	20,651	4	0	4	153
P12	206W	60	1050	T1S	27,457	4	0	4	133	28,616	4	0	4	139	29,174	4	0	4	142
				T2M	25,436	5	0	5	124	26,509	5	0	5	129	27,025	5	0	5	131
				T3M	25,727	5	0	5	125	26,812	5	0	5	130	27,335	5	0	5	133
				T3LG	22,984	4	0	4	112	23,954	4	0	4	116	24,421	4	0	4	119
				T4M	26,110	5	0	5	127	27,212	5	0	5	132	27,742	5	0	5	135
				T4LG	23,747	4	0	4	115	24,749	4	0	4	120	25,231	4	0	4	123
				TFTM	26,295	5	0	5	128	27,404	5	0	5	133	27,938	5	0	5	136
				T5M	26,864	5	0	4	130	27,997	5	0	4	136	28,543	5	0	4	139
				T5W	27,299	5	0	4	133	28,451	5	0	4	138	29,006	5	0	4	141
				T5LG	26,942	4	0	2	131	28,078	4	0	2	136	28,626	4	0	2	139
				BLC3	18,714	4	0	4	91	19,504	4	0	4	95	19,884	4	0	4	97
				BLC4	19,327	5	0	5	94	20,143	5	0	5	98	20,535	5	0	5	100
				RCCO	18,883	1	0	4	92	19,680	1	0	4	96	20,064	1	0	4	97
				LCCO	18,883	1	0	4	92	19,680	1	0	4	96	20,064	1	0	4	97
				AFR	27,457	4	0	4	133	28,616	4	0	4	139	29,174	4	0	4	142
P13	276W	60	1400	T1S	34,436	5	0	5	125	35,889	5	0	5	130	36,588	5	0	5	133
				T2M	31,900	5	0	5	116	33,246	5	0	5	121	33,894	5	0	5	123
				T3M	32,265	5	0	5	117	33,626	5	0	5	122	34,282	5	0	5	124
				T3LG	28,826	4	0	4	105	30,042	4	0	4	109	30,628	4	0	4	111
				T4M	32,746	5	0	5	119	34,128	5	0	5	124	34,793	5	0	5	126
				T4LG	29,782	4	0	4	108	31,039	4	0	4	113	31,644	5	0	4	115
				TFTM	32,978	5	0	5	120	34,369	5	0	5	125	35,039	5	0	5	127
				T5M	33,692	5	0	4	122	35,113	5	0	4	127	35,797	5	0	4	130
				T5W	34,238	5	0	4	124	35,682	5	0	4	129	36,378	5	0	4	132
				T5LG	33,789	5	0	3	122	35,215	5	0	3	128	35,901	5	0	3	130
				BLC3	23,471	5	0	5	85	24,461	5	0	5	89	24,937	5	0	5	90
				BLC4	24,240	5	0	5	88	25,262	5	0	5	92	25,755	5	0	5	93
				RCCO	23,683	1	0	4	86	24,682	1	0	4	89	25,163	1	0	4	91
				LCCO	23,683	1	0	4	86	24,682	1	0	4	89	25,163	1	0	4	91
				AFR	34,436	5	0	5	125	35,889	5	0	5	130	36,588	5	0	5	133

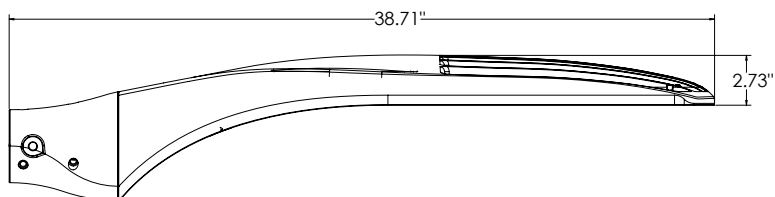
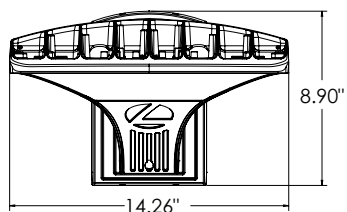
Dimensions



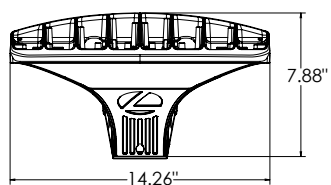
DSX1 with RPA, RPA5, SPA5, SPA8N mount
Weight: 36 lbs



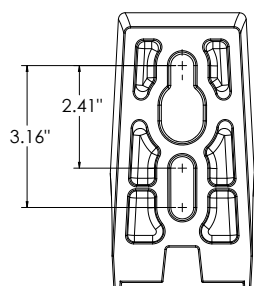
DSX1 with WBA mount
Weight: 38 lbs



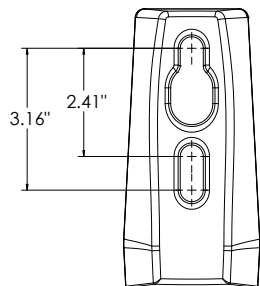
DSX1 with MA mount
Weight: 39 lbs



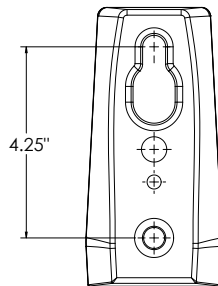
SPA (STANDARD ARM)



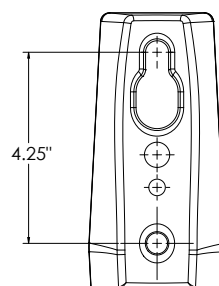
RPA



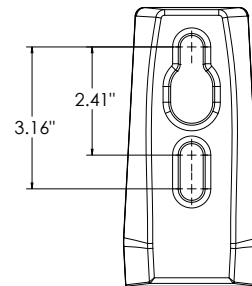
SPA5



RPA5

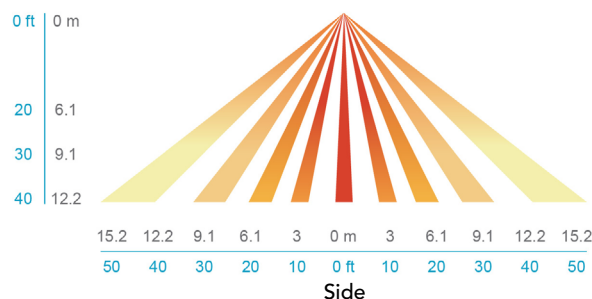
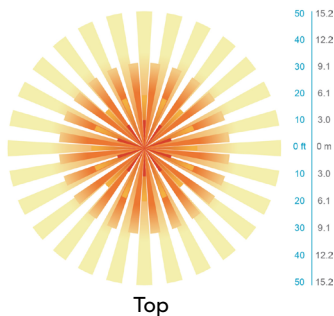
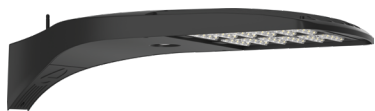


SPA8N



nLight Sensor Coverage Pattern

NLTAIR2 PIRHN



FEATURES & SPECIFICATIONS

INTENDED USE

The sleek design of the D-Series Size 1 reflects the embedded high performance LED technology. It is ideal for many commercial and municipal applications, such as parking lots, plazas, campuses, and streetscapes.

CONSTRUCTION

Single-piece die-cast aluminum housing has integral heat sink fins to optimize thermal management through conductive and convective cooling. Modular design allows for ease of maintenance and future light engine upgrades. The LED drivers are mounted in direct contact with the casting to promote low operating temperature and long life. Housing driver compartment is completely sealed against moisture and environmental contaminants (IP66). Vibration rated per ANSI C136.31 for 3G for SPA and MA. 1.5G for mountings RPA, RPA5, SPA5 and SPA8N. Low EPA (0.69 ft²) for optimized pole wind loading.

FINISH

Exterior parts are protected by a zinc-infused Super Durable TGIC thermoset powder coat finish that provides superior resistance to corrosion and weathering. A tightly controlled multi-stage process ensures a minimum 3 mils thickness for a finish that can withstand extreme climate changes without cracking or peeling. Available in both textured and non-textured finishes.

Coastal Construction (CCE)

Optional corrosion resistant construction is engineered with added corrosion protection in materials and/or pre-treatment of base material under super durable paint. Provides additional corrosion protection for applications near coastal areas. Finish is salt spray tested to over 5,000 hours per ASTM B117 with scribe rating of 10. Additional lead-times may apply.

OPTICS

Precision-molded proprietary silicone lenses are engineered for superior area lighting distribution, uniformity, and pole spacing. Light engines are available in standard 3000 K, 4000 K and 5000 K (70 CRI) configurations. 80CRI configurations are also available. The D-Series Size 1 has zero uplight and qualifies as a Nighttime Friendly™ product, meaning it is consistent with the LEED® and Green Globes™ criteria for eliminating wasteful uplight.

ELECTRICAL

Light engine configurations consist of high-efficacy LEDs mounted to metal-core circuit boards to maximize heat dissipation and promote long life (up to L81/100,000 hours at 25°C). Class 1 electronic drivers are designed to have a power factor >90%, THD <20%, and an expected life of 100,000 hours with <1% failure rate. Easily serviceable 10kV surge protection device meets a minimum Category C Low operation (per ANSI/IEEE C62.41.2).

STANDARD CONTROLS

The DSX1 LED area luminaire has a number of control options. DSX Size 1, comes standard with 0-10V dimming drivers. Dusk to dawn controls can be utilized via optional NEMA twist-lock photocell receptacles. Integrated motion sensor with on-board photocells feature field-adjustable programming and are suitable for mounting heights up to 40 feet. Control option BL features a bi-level device that allows a second control circuit to switch all light engines to either 30% or 50% light output.

nLIGHT AIR CONTROLS

The DSX1 LED area luminaire is also available with nLight® AIR for the ultimate in wireless control. This powerful controls platform provides out-of-the-box basic motion sensing and photocontrol functionality and is suitable for mounting heights up to 40 feet. Once commissioned using a smartphone and the easy-to-use CLAIRITY app, nLight AIR equipped luminaires can be grouped, resulting in motion sensor and photocell group response without the need for additional equipment. Scheduled dimming with motion sensor over-ride can be achieved when used with the nLight Eclipse. Additional information about nLight Air can be found here.

INSTALLATION

Integral mounting arm allows for fast mounting using Lithonia standard #8 drilling and accommodates pole drilling's from 2.41 to 3.12" on center. The standard "SPA" option for square poles and the "RPA" option for round poles use the #8 drilling. For #5 pole drillings, use SPA5 or RPA5. Additional mountings are available including a wall bracket (WBA) and mast arm (MA) option that allows luminaire attachment to a 2 3/8" horizontal mast arm.

LISTINGS

UL listed to meet U.S. and Canadian standards. UL Listed for wet locations. Light engines are IP66 rated; luminaire is IP66 rated. Rated for -40°C minimum ambient.

DesignLights Consortium® (DLC) Premium qualified product and DLC qualified product. Not all versions of this product may be DLC Premium qualified or DLC qualified. Please check the DLC Qualified Products List at www.designlights.org/QPL to confirm which versions are qualified.

International Dark-Sky Association (IDA) Fixture Seal of Approval (FSA) is available for all products on this page utilizing 3000K color temperature only.

GOVERNMENT PROCUREMENT

BAA – Buy America(n) Act: Product with the BAA option qualifies as a domestic end product under the Buy American Act as implemented in the FAR and DFARS. Product with the BAA option also qualifies as manufactured in the United States under DOT Buy America regulations.

BABA – Build America Buy America: Product with the BAA option also qualifies as produced in the United States under the definitions of the Build America, Buy America Act.

Please refer to www.acuitybrands.com/buy-american for additional information.

WARRANTY

5-year limited warranty. This is the only warranty provided and no other statements in this specification sheet create any warranty of any kind. All other express and implied warranties are disclaimed. Complete warranty terms located at: www.acuitybrands.com/support/warranty/terms-and-conditions

Note: Actual performance may differ as a result of end-user environment and application. All values are design or typical values, measured under laboratory conditions at 25 °C. Specifications subject to change without notice.

FEATURES & SPECIFICATIONS

INTENDED USE — These specifications are for USA standards only. Square Straight Steel is a general purpose light pole for up to 39-foot mounting heights. This pole provides a robust yet cost effective option for mounting area lights and floodlights.

CONSTRUCTION —

Pole Shaft: The pole shaft is of uniform dimension and wall thickness and is made of a weldable-grade, hot-rolled, commercial-quality steel tubing with a minimum yield of 55 KSI (11-gauge, 0.120"), or 50 KSI (7-gauge, 0.179"). Shaft is one-piece with a full-length longitudinal high-frequency electric resistance weld. Uniformly square in cross-section with flat sides, small corner radii and excellent torsional qualities. Available shaft widths are 4", 5" and 6".

Pole Top: Options include 4" tenon top, drilled for side mount fixture, tenon with drilling (includes extra handhole) and open top. Side drilled and open top poles include a removable top cap.

Handhole: A reinforced handhole with grounding provision is provided at 18" from the base on side A. Positioning the handhole lower may not be possible and requires engineering review; consult Tech Support-Outdoor for further information. Every handhole includes a cover and cover attachment hardware. The handhole has a nominal dimension of 2.5" x 5".

Base Cover: A durable ABS plastic two-piece full base cover, finished to match the pole, is provided with each pole assembly. Additional base cover options are available upon request.

Anchor Base/Bolts: Anchor base is fabricated from steel that meets ASTM A36 standards and can be altered to match existing foundations; consult factory for modifications. Anchor bolts are manufactured to ASTM F1554 Standards grade 55, (55 KSI minimum yield strength and tensile strength of 75-95 KSI). Top threaded portion (nominal 12") is hot-dipped galvanized per ASTM A-153.

HARDWARE — All structural fasteners are high-strength galvanized carbon steel. All non-structural fasteners are galvanized or zinc-plated carbon steel or stainless steel.

FINISH — Extra durable painted finish is coated with TGIC (Triglycidyl Isocyanurate) Polyester powder that meets 5A and 5B classifications of ASTM D3359. Powder-coat finishes include Dark Bronze, White, Black, and Natural Aluminum colors. Architectural Colors and Special Finishes are available by quote and include, but are not limited to Paint over Hot-dipped Galvanized, RAL Colors, Custom Colors and Extended Warranty Finishes.

GOVERNMENT PROCUREMENT —

BAA — Buy America(n) Act: Product qualifies as a domestic end product under the Buy American Act as implemented in the FAR and DFARS. Product also qualifies as manufactured in the United States under DOT Buy America regulations.

BABA — Build America Buy America: Product qualifies as produced in the United States under the definitions of the Build America, Buy America Act.

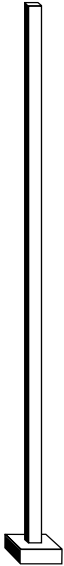
Please refer to www.acuitybrands.com/buy-american for additional information.

INSTALLATION — **Do not** erect poles without having fixtures installed. Factory-supplied templates must be used when setting anchor bolts. Lithonia Lighting will not accept claim for incorrect anchorage placement due to failure to use Lithonia Lighting factory templates. If poles are stored outside, all protective wrapping must be removed immediately upon delivery to prevent finish damage. Lithonia Lighting is not responsible for the foundation design.

WARRANTY — 1-year limited warranty. This is the only warranty provided and no other statements in this specification sheet create any warranty of any kind. All other express and implied warranties are disclaimed. Complete warranty terms located at: www.acuitybrands.com/support/warranty/terms-and-conditions

NOTE: Actual performance may differ as a result of end-user environment and application. Specifications subject to change without notice.

Catalog Number
Notes
Type



Anchor Base Poles

SSS

SQUARE STRAIGHT STEEL



SSS Square Straight Steel Poles

ORDERING INFORMATION Lead times will vary depending on options selected. Consult with your sales representative. Example: SSS 20 5C DM28AS DDBXD

SSS					
Series	Nominal fixture mounting height	Nominal shaft base size/wall thickness ¹	Mounting ²	Options	Finish
SSS	10'-39' (for 1/2 ft increments, add -6 to the pole height. Ex: 20-6 equals 20ft 6in.) (See technical information table for complete ordering information.)	4C 4" 11g (0.120") 4G 4" 7g (0.179") 5C 5" 11g (0.120") 5G 5" 7g (0.179") 6G 6" 7g (0.179") (See technical information table for complete ordering information.)	<u>Tenon mounting</u> PT Open top (includes top cap) T20 2-3/8" O.D. (2" NPS) T25 2-7/8" O.D. (2-1/2" NPS) T30 3-1/2" O.D. (3" NPS) T35 4" O.D. (3-1/2" NPS) <u>DSX/RSX/OMERO™ Drill mounting³</u> DM19AS 1 at 90° DM28AS 2 at 180° DM29AS 2 at 90° DM39AS 3 at 90° DM49AS 4 at 90° <u>RAD drill mounting³</u> DM19RAD 1 at 90° DM28RAD 2 at 180° DM29RAD 2 at 90° DM39RAD 3 at 90° DM49RAD 4 at 90° <u>ESX Drill mounting³</u> DM19ESX 1 at 90° DM28ESX 2 at 180° DM29ESX 2 at 90° DM39ESX 3 at 90° DM49ESX 4 at 90° <u>Arm drill mounting</u> To be added as series + drill orientations EX: SMAC19 for SMAC arm drilling 1 at 90°	<u>Shipped installed</u> VD Vibration damper ⁴ JHxy J-Hook for cable strain relief ⁵ HAXy Horizontal arm bracket (1 fixture) ^{5,6} FDLxy Festoon outlet less electrical ^{5,7} FDLGFCLxy Festoon with GFCI outlet and in-use cover ^{5,8} CPL12/xy 1/2" coupling ⁵ CPL34/xy 3/4" coupling ⁵ CPL1/xy 1" coupling ⁵ NPL12/xy 1/2" threaded nipple ⁵ NPL34/xy 3/4" threaded nipple ⁵ NPL1/xy 1" threaded nipple ⁵ EHHxy Extra handhole ^{5,9} STLTMP Steel anchor bolt template (standard is paper) STLHHC Steel handhole cover (standard is plastic, finish is smooth) ¹⁰ FBCSTL2PC 2 Piece steel base cover (standard is plastic) ¹⁰ IC Interior coating ¹¹ L/AB Less anchor bolts (Include when anchor bolts are not needed) TP Tamper resistant handhole cover fasteners NEC NEC 410.30 compliant gasketed handhole (Not UL Labeled) UL UL listed with label (Includes NEC compliant cover) BAA Buy America(n) Act Compliant ¹² VM/original order# Match pole to prior order or project ¹³	<u>Super durable paint colors</u> DDBXD Dark bronze DBLXD Black DNAXD Natural aluminum DWHXD White DSSXD Sandstone DGCXD Charcoal gray DTGXD Tennis green DBRXD Bright red DSBXD Steel blue DDBTXD Textured dark bronze DBLBXD Textured black DNATXD Textured natural aluminum DWHGXD Textured white <u>Other finishes</u> GALV Galvanized finish <u>Architectural colors and special finishes¹⁴</u> [PAINT] GALV Paint over galvanizing VP30 3 year warranty extension VP53 5 year warranty extension RAL#### Use designated Lithonia Lighting nomenclature in brochure Custom color Nomenclature assigned through Customer Care "Custom Color Process"

Accessories: Order as separate catalog number.	
PL DT20	Plugs for ESX drillings
PL DT8	Plugs for DMxxAS drillings
FVD xxFT	Field installed vibration damper (snake style)

- NOTES:**

 - Wall thickness will be signified with a "C" (11 Gauge) or a "G" (7-Gauge) in nomenclature. "C" - 0.120" | "G" - 0.179".
 - PT open top poles include top cap. When ordering tenon mounting and drill mounting for the same pole, specify as drilling option/tenon option. The combination includes a required extra handhole.
Example: DM28/T20.
 - Refer to the fixture spec sheet for the correct drilling template pattern and orientation compatibility.
 - On 4" and 5" poles, VD cannot be installed if provisions (EHH, FDL, NPL, CPL) are located higher than 2/3 of the pole's total height.
Example: Pole height is 25ft, A provision cannot be placed above 16ft.
 - Specify location and orientation when ordering option.
For "x": Specify the height above the base of pole in feet or feet and inches; separate feet and inches with a "-".
Example: 5ft = 5 and 20ft 3in = 20-3
For "y": Specify orientation from handhole (A,B,C,D) Refer to the Handhole Orientation diagram below.
Example: 1/2" coupling at S' 8", orientation C = CPL12/S-8C
 - Horizontal arm is 18" x 2-3/8" O.D. tenon standard, with radius curve providing 12" rise and 2-3/8" O.D. If ordering two horizontal arm at the same height, specify with HAXxy.
Example: HA20BD.
- FDL does not come with GFCI outlet or handhole cover. These must be supplied by contractor or electrician.
 - Festoon option that comes with GFCI and in-use cover. GFCI and in-use cover ship separately from pole.
 - Combination of tenon-top and drill mount includes extra handhole. EHH includes cover.
 - Plastic hand hole cover and base covers come standard with all poles. Items ship separately. Additional parts can be ordered as replacements.
 - N/A with GALV.
 - Use when mill certifications are required.
 - Must add original order number. Not for replacement parts or post sales issues, contact tech support or post sales teams. VM is used to ensure poles match in appearance exactly from order to order, on a single project site. A common use case would be a multi-phase project with multiple orders. *Example: VM/010-36784*
 - Must be quoted through AQD. Finishes do not require RFA. RAL colors available are shown in "Architectural Colors brochure". Lead times may be extended up to 2 weeks due to paint procurement.

SSS Square Straight Steel Poles

TECHNICAL INFORMATION — EPA (ft²) with 1.3 gust											
Catalog Number	Nominal Shaft Length (ft.)*	Pole Shaft Size (Base in. x Top in. x ft.)	Wall thick (in.)	Gauge	EPA (ft²) with 1.3 gust						Approximate ship weight (lbs.)
					80 MPH	Max. weight	90 MPH	Max. weight	100 MPH	Max. weight	
SSS 10 4C	10	4.0 x 10.0	0.120"	11	30.6	765	23.8	595	18.9	473	75
SSS 12 4C	12	4.0 x 12.0	0.120"	11	24.4	610	18.8	470	14.8	370	90
SSS 14 4C	14	4.0 x 14.0	0.120"	11	19.9	498	15.1	378	11.7	293	100
SSS 16 4C	16	4.0 x 16.0	0.120"	11	15.9	398	11.8	295	8.9	223	115
SSS 18 4C	18	4.0 x 18.0	0.120"	11	12.6	315	9.2	230	6.7	168	125
SSS 20 4C	20	4.0 x 20.0	0.120"	11	9.6	240	6.7	167	4.5	150	140
SSS 20 4G	20	4.0 x 20.0	0.179"	7	14	350	11	275	8	200	198
SSS 20 5C	20	5.0 x 20.0	0.120"	11	17.7	443	12.7	343	9.4	235	185
SSS 20 5G	20	5.0 x 20.0	0.179"	7	28.1	703	21.4	535	16.2	405	265
SSS 25 4C	25	4.0 x 25.0	0.120"	11	4.8	150	2.6	100	1	50	170
SSS 25 4G	25	4.0 x 25.0	0.179"	7	10.8	270	7.7	188	5.4	135	245
SSS 25 5C	25	5.0 x 25.0	0.120"	11	9.8	245	6.3	157	3.7	150	225
SSS 25 5G	25	5.0 x 25.0	0.179"	7	18.5	463	13.3	333	9.5	238	360
SSS 30 4G	30	4.0 x 30.0	0.179"	7	6.7	168	4.4	110	2.6	65	295
SSS 30 5C	30	5.0 x 30.0	0.120"	11	4.7	150	2	50	--	--	265
SSS 30 5G	30	5.0 x 30.0	0.179"	7	10.7	267	6.7	167	3.9	100	380
SSS 30 6G	30	6.0 x 30.0	0.179"	7	19	475	13.2	330	9	225	520
SSS 35 5G	35	5.0 x 35.0	0.179"	7	5.9	150	2.5	100	--	--	440
SSS 35 6G	35	6.0 x 35.0	0.179"	7	12.4	310	7.6	190	4.2	105	540
SSS 39 6G	39	6.0 x 39.0	0.179"	7	7.2	180	3	75	--	--	605

NOTE: EPA values are based ASCE 7-93 wind map.
* For 1/2 ft increments, add -6 to the pole height. Ex: 20-6 equals 20ft 6in.

TECHNICAL INFORMATION — EPA (ft²) WITH 3-SECOND GUST PER AASHTO 2013																	
Series	Mounting Height (ft.)*	Shaft Base Size	90 MPH	Max. weight	100 MPH	Max. weight	110 MPH	Max. weight	120 MPH	Max. weight	130 MPH	Max. weight	140 MPH	Max. weight	150 MPH	Max. weight	Approximate ship weight (lbs.)
SSS	10	4C	20	500	16	400	13	325	10.5	263	8.5	213	7	175	6	150	75
SSS	12	4C	16	400	13	325	10	250	8	200	6.5	163	5	125	4	100	90
SSS	14	4C	13.5	338	10	250	7.5	188	6	150	4.5	113	3.5	88	2.5	63	100
SSS	16	4C	10.5	263	7.5	188	5.5	138	4	100	3	75	1.5	38	1	25	115
SSS	18	4C	8	200	5.5	138	4	100	2.5	63	1.5	38	0.5	13	-	-	125
SSS	18	4G	13	325	9.5	238	7	175	5	125	3.5	88	2.5	63	1.5	38	185
SSS	18	5C	13	325	9.5	238	6.5	163	4.5	113	3	75	1.5	38	.5	13	170
SSS	20	4C	6	150	4	100	2.5	63	1	25	-	-	-	-	-	-	140
SSS	20	4G	10.5	263	7.5	188	5.5	138	3.5	88	2	50	1	25			205
SSS	20	5C	10	250	7	175	4.5	113	2.5	63	1	25	-	-	-	-	185
SSS	20	5G	20	500	15	375	11.5	288	8.5	213	6	150	4.5	113	3	75	265
SSS	25	4C	2	50	0.5	13	-	-	-	-	-	-	-	-	-	-	170
SSS	25	4G	5.5	138	3	75	1.5	38	-	-	-	-	-	-	-	-	245
SSS	25	5C	4.5	113	2	50	-	-	-	-	-	-	-	-	-	-	225
SSS	25	5G	12	300	8.5	213	5.5	138	3	75	1.5	38	-	-	-	-	360
SSS	25	6G	19	475	13.5	338	9	225	5.5	138	3	75	1	25			445
SSS	30	4G	1.5	38	-	-	-	-	-	-	-	-	-	-	-	-	291
SSS	30	5C	-	-	-	-	-	-	-	-	-	-	-	-	-	-	265
SSS	30	5G	6.5	163	3.5	88	1	25	-	-	-	-	-	-	-	-	380
SSS	30	6G	11	275	6	150	2.5	63	-	-	-	-	-	-	-	-	520
SSS	35	5G	2	50	-	-	-	-	-	-	-	-	-	-	-	-	440
SSS	35	6G	4	100	-	-	-	-	-	-	-	-	-	-	-	-	540
SSS	39	6G	-	-	-	-	-	-	-	-	-	-	-	-	-	-	605

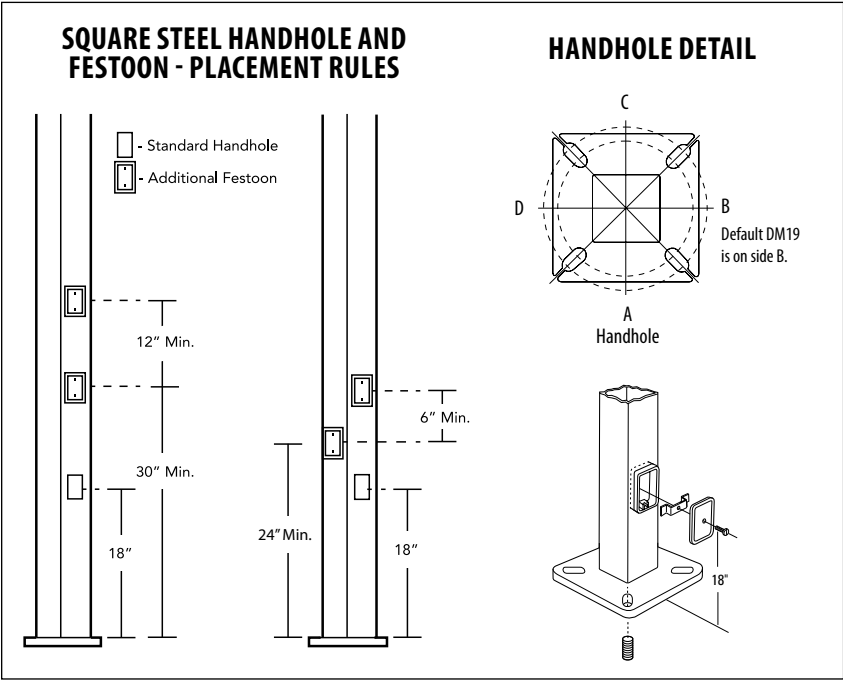
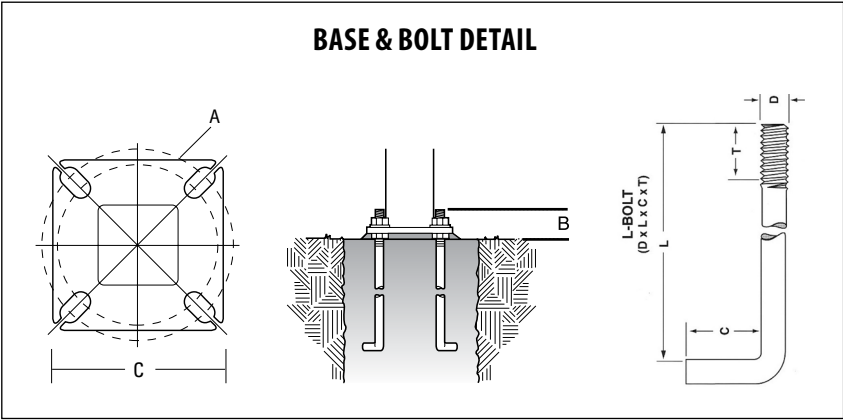
NOTE: AASHTO 2013 design criteria is the most common EPA and uses wind map ASCE7-05. Please review the project Spec document to determine the correct design criteria for the poles on your jobsite.
*For 1/2 ft increments, add -6 to the pole height. Ex: 20-6 equals 20ft 6in.



SSS Square Straight Steel Poles

ANCHORAGE AND TEMPLATE INFORMATION								
Shaft base size	Bolt circle A	Bolt projection B	Base square C	Base plate thickness	Template description *	Anchor bolt description	Bolt size (in.) D x L x C	Anchor bolt/Template Combo
4"C	8" – 9"	3.25" - 3.75"	8" - 8.25"	0.75"	ABTEMPLATE PJ50004	AB18-0	3/4 x 18 x 3	ABSSS-4C
4"G	8" – 9"	3.38" - 3.75"	8" - 8.25"	0.875"	ABTEMPLATE PJ50004	AB30-0	3/4 x 30 x 3	ABSSS-4G
5"	10" – 12"	3.5" - 4"	11"	1"	ABTEMPLATE PJ50010	AB36-0	1 x 36 x 4	ABSSS-5
6"	11" – 13"	4" - 4.50"	12.5"	1"	ABTEMPLATE PJ50011	AB36-0	1 x 36 x 4	N/A

* Paper template standard. Add STL to end of description for the steel template.



IMPORTANT INSTALLATION NOTES:

- **Do not** erect poles without having fixtures installed.
- Factory-supplied templates must be used when setting anchor bolts. Lithonia Lighting will not accept claim for incorrect anchorage placement due to failure to use Lithonia Lighting factory templates.
- If poles are stored outside, all protective wrapping must be removed immediately upon delivery to prevent finish damage.
- Lithonia Lighting is not responsible for the foundation design.
- Bolt circles have +/- 1/2" tolerance.

CAUTION: These specifications are intended for general purposes only. Lithonia Lighting reserves the right to change material or design, without prior notice, in a continuing effort to upgrade its products.





ARC2 LED

Architectural Wall Luminaire



Catalog
Number

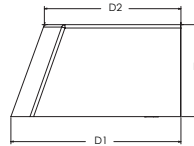
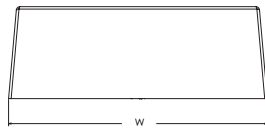
Notes

Type

Hit the Tab key or mouse over the page to see all interactive elements.

Specifications

Depth (D1): 9.25"
Depth (D2): 7.5"
Height: 5"
Width: 14"
Weight: 11 lbs
(without options)



Introduction

The Lithonia Lighting ARC LED wall-mounted luminaires provide both architectural styling and visually comfortable illumination while providing the high energy savings and low initial costs for quick financial payback.

ARC2 delivers up to 6,500 lumens with a soft, non-pixelated light source, creating a visually comfortable environment. It offers integrated emergency battery backup options, including an 8W cold temperature option, making it suitable for pedestrian scale applications in any environment.

ARC LED Family Overview

Luminaire	Standard EM, 0°C	Cold EM, -20°C	Approximate Lumens (4000K)				
			P1	P2	P3	P4	P5
ARC1 LED	4W	--	1,500	2,000	3,000	--	--
ARC2 LED	4W	8W	1,500	2,000	3,000	4,000	6,500

Ordering Information

EXAMPLE: ARC2 LED P2 40K MVOLT PE DDBXD

Series	Package	Color Temperature	Voltage	Options	Finish
ARC2 LED	P1 1,500 Lumens	30K 3000K	MVOLT 347 ¹	E4WH Emergency battery backup, CEC compliant (4W, 0°C min) ¹	DDBXD Dark bronze
	P2 2,000 Lumens	40K 4000K		E8WC Emergency battery backup, CEC compliant (8W, -20°C min) ¹	DBLXD Black
	P3 3,000 Lumens	50K 5000K		PE Button type photocell for dusk-to-dawn operation	DNAXD Natural aluminum
	P4 4,000 Lumens			DMG 0-10V dimming wires pulled outside fixture (for use with an external control, ordered separately) ²	DWHXD White
	P5 6,500 Lumens			SPD6KV 6kV surge protection ¹	DSSXD Sandstone
				FAO Field adjustable light output device. Allows for easy adjustment to the desired light levels, from 20% to 100% ²	DDBTXD Textured dark bronze
				LDS18 18" Fixture leads	DBLBXD Textured black
					DNATXD Textured natural aluminum
					DWHGXD Textured white
					DSSTXD Textured sandstone

Accessories

Ordered and shipped separately.

WSBBW DDBXD U

Surface - mounted back box (specify finish)

NOTES

- 347V not available with E4WH, E8WC and SPD6KV.
- FAO not available with DMG.



COMMERCIAL OUTDOOR

One Lithonia Way • Conyers, Georgia 30012 • Phone: 1-800-705-SERV (7378) • www.lithonia.com
© 2020-2024 Acuity Brands Lighting, Inc. All rights reserved.

ARC2 LED
Rev. 08/27/24

Performance Data

Lumen Output

Lumen values are from photometric tests performed in accordance with IESNA LM-79-08. Data is considered to be representative of the configurations shown, within the tolerances allowed by Lighting Facts. Contact factory for performance data on any configurations not shown here.

Performance Package	System Watts	30K (3000K, 80 CRI)					40K (4000K, 80 CRI)					50K (5000K, 80 CRI)				
		Lumens	LPW	B	U	G	Lumens	LPW	B	U	G	Lumens	LPW	B	U	G
P1	11W	1,502	142	0	0	1	1,587	150	0	0	1	1,598	151	0	0	1
P2	16W	2,250	140	0	0	1	2,377	147	0	0	1	2,393	148	0	0	1
P3	24W	3,206	135	0	0	1	3,387	143	0	0	1	3,410	144	0	0	1
P4	30W	3,903	128	1	0	1	4,124	136	1	0	1	4,152	136	1	0	1
P5	51W	6,260	122	1	0	1	6,615	129	1	0	1	6,659	130	1	0	1

Electrical Load

Performance Package	System Watts	Current (A)				
		120V	208V	240V	277V	347V
P1	11W	0.090	0.055	0.049	0.046	0.045
P2	16W	0.141	0.081	0.072	0.064	0.059
P3	24W	0.202	0.117	0.103	0.091	0.079
P4	30W	0.280	0.162	0.144	0.128	0.095
P5	51W	0.471	0.272	0.239	0.212	0.158

Lumen Output in Emergency Mode (4000K, 80 CRI)

Option	Lumens
E4WH	693
E8WC	1,413

Lumen Ambient Temperature (LAT) Multipliers

Use these factors to determine relative lumen output for average ambient temperatures from 0-40°C (32-104°F).

Ambient		Lumen Multiplier
0°C	32°F	1.04
10°C	50°F	1.03
20°C	68°F	1.01
25°C	77°F	1.00
30°C	86°F	0.99
40°C	104°F	0.97

Projected LED Lumen Maintenance

Data references the extrapolated performance projections for the platforms noted in a 25°C ambient, based on 10,000 hours of LED testing (tested per IESNA LM-80-08 and projected per IESNA TM-21-11). To calculate LLF, use the lumen maintenance factor that corresponds to the desired number of operating hours below. For other lumen maintenance values, contact factory.

Operating Hours	0	25,000	50,000	100,000
Lumen Maintenance Factor	1.0	>0.96	>0.93	>0.88

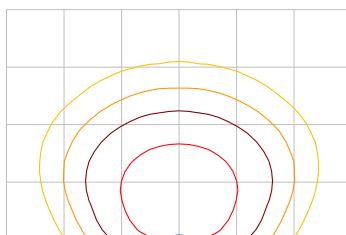
Photometric Diagrams

To see complete photometric reports or download .ies files for this product, visit the Lithonia Lighting ARC LED homepage. Tested in accordance with IESNA LM-79 and LM-80 standards.

LEGEND

- 0.25 fc
- 0.5 fc
- 1.0 fc
- 3.0 fc

MH = 15ft
Grid = 15ft x 15ft



ARC2 LED P3 40K



COMMERCIAL OUTDOOR

One Lithonia Way • Conyers, Georgia 30012 • Phone: 1-800-705-SERV (7378) • www.lithonia.com
© 2020-2024 Acuity Brands Lighting, Inc. All rights reserved.

ARC2 LED
Rev. 08/27/24

Emergency Egress Options

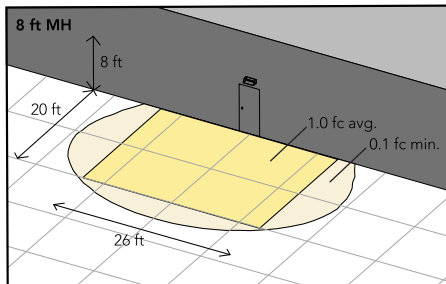
Emergency Battery Backup

The emergency battery backup is integral to the luminaire — no external housing required! This design provides reliable emergency operation while maintaining the aesthetics of the product. All emergency battery backup configurations include an independent secondary driver with an integral relay to immediately detect loss of normal power and automatically energize the luminaire. The emergency battery will power the luminaire for a minimum duration of 90 minutes (maximum duration of three hours) from the time normal power is lost and maintain a minimum of 60% of the light output at the end of 90 minutes.

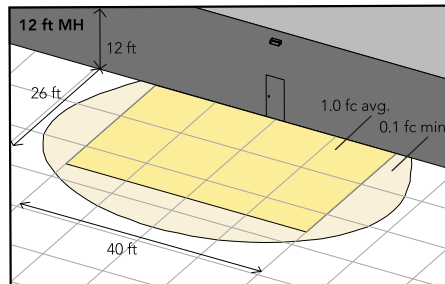
Applicable codes: NFPA 70/NEC – section 700.16, NFPA 101 Life Safety Code Section 7.9

The example below shows illuminance of 1 fc average and 0.1 fc minimum in emergency mode.

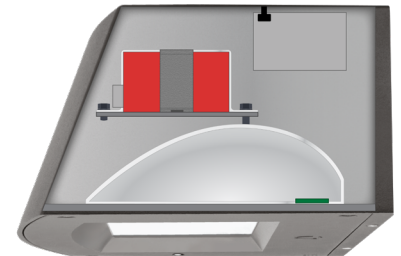
Grid = 10ft x 10ft



ARC2 LED 40K MVOLT E4WH



ARC2 LED 40K MVOLT E8WC



Self-contained solution for clean aesthetic

Mounting, Options & Accessories

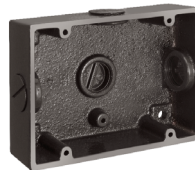


E4WH and E8WC – Emergency Battery Backup

D = 6.5"

H = 5"

W = 11"



BBW – Standard Back Box

D = 1.5"

H = 4"

W = 5.5"

For surface conduit applications.
3/4" conduit entry holes.

FEATURES & SPECIFICATIONS

INTENDED USE

The clean architectural shape of the ARC LED was designed for applications such as hospitals, schools, malls, restaurants, and commercial buildings. The long-life LEDs and driver make this luminaire nearly maintenance-free.

CONSTRUCTION

The die-cast aluminum housing and door act as heat sinks to optimize thermal transfer from the light engine and driver to promote long-life. The die-cast door frame is fully gasketed with a one-piece solid silicone gasket to keep out moisture and dust, providing an IP65 rating for the luminaire.

FINISH

Exterior painted parts are protected by a zinc-infused Super Durable TGIC thermoset powder coat finish that provides superior resistance to corrosion and weathering. A tightly controlled multi-stage process ensures a 3 mils thickness for a finish that can withstand extreme climate changes without cracking or peeling. Standard Super Durable colors include dark bronze, black, natural aluminum, sandstone and white. Available in textured and non-textured finishes.

OPTICS

Recessed lens to cut off high angle light and reduce glare. Combination of diffused lens and reflector design has low surface brightness creating a visually comfortable environment with great distribution. LEDs are fully hidden from view to eliminate pixelization and harsh glare. The ARC LED has zero uplight and qualifies as a Nighttime Friendly™ product, meaning it is consistent with the LEED® and Green Globes™ criteria for eliminating wasteful uplight.

ELECTRICAL

Light engine consists of high-efficiency LEDs mounted to metal-core circuit boards to maximize heat dissipation and promote long-life (up to L88/100,000 hours at 25°C). The electronic driver has a power factor of >90%, THD <20%. Luminaire is 0-10V dimmable.

INSTALLATION

The universal wall plate, supplied with the luminaire, fits multiple size junction boxes and supports it during wiring for easy installation. Built-in wet location wiring compartment on the luminaire to accommodate wiring connections for applications with no junction box. Design can withstand up to a 1.5 G vibration load rating per ANSI C136.31.

LISTINGS

CSA certified to U.S. and Canadian standards. Luminaire is IP65 rated. DesignLights Consortium® (DLC) Premium qualified product and DLC qualified product. Not all versions of this product may be DLC Premium qualified or DLC qualified. Please check the DLC Qualified Products List at www.designlights.org/QPL to confirm which versions are qualified. International DarkSky Association (IDA) Fixture Seal of approval (FSA) is available for all products on this page utilizing 3000K color temperature only. Rated for -40°C minimum ambient.

WARRANTY

5-year limited warranty. This is the only warranty provided and no other statements in this specification sheet create any warranty of any kind. All other express and implied warranties are disclaimed. Complete warranty terms located at: www.acuitybrands.com/support/warranty/terms-and-conditions

Note: Actual performance may differ as a result of end-user environment and application. All values are design or typical values, measured under laboratory conditions at 25 °C. Specifications subject to change without notice.



COMMERCIAL OUTDOOR

One Lithonia Way • Conyers, Georgia 30012 • Phone: 1-800-705-SERV (7378) • www.lithonia.com
© 2020-2024 Acuity Brands Lighting, Inc. All rights reserved.

ARC2 LED
Rev. 08/27/24

Step Neck Angle - Gooseneck Mounted



A - SERIES

B - FINISH

C - LAMP TYPE

D - GOOSENECK

E - GOOSENECK FINISH

A Series

Step Neck Angle:

Code	Name	Wattage
SN608	8" Step Neck Angle	
SN610	10" Step Neck Angle	
SN612	12" Step Neck Angle	
SN614	14" Step Neck Angle	

BAA/BABA: Please add either BAA or BABA to end of part number if job requires.

B Finish

iGXX for Interior, eGXX for Exterior
Powder Coat Finishes:

Code	Name
GXX	To be determined.
G0	Black
G1	White
G2	Red
G4	Blue
G5	Green
G6	Brown
G8	Dark Bronze

C Lamp Type

Sockets:

Code	Name
MED5	E26 Medium Base Socket

Adjustable LED Lumens & Kelvin Module - Indoor/Outdoor:

Code	Name
LAC02	
LAC03	LAC03 1650-2750LM, 27-50K, 23W, 90CRI

D Gooseneck

Gooseneck Top - Top Mounted:

Code	Name
GN23A	23" Style A Gooseneck
GN10K	10" Style K Gooseneck
GN15H	15" Style H Gooseneck
GN17A	17" Style A Gooseneck
GN22H	22" Style H Gooseneck
GN24D	24" Style D Gooseneck
GN25J	25" Style J Gooseneck
GN30C	30" Style C Gooseneck
GN32G	32" Style G Gooseneck
GN40E	40" Style E Gooseneck
GN48B	48" Style B Gooseneck
GN56F	56" Style F Gooseneck

E Gooseneck Finish

See B

Fixture Size Option

SN608

SN610

SN612

SN614

2476 Edison Blvd
Twinsburg, Ohio 44087

p: (216) 912-7050
e: sales@bocklighting.com

PAGE 1 OF 3

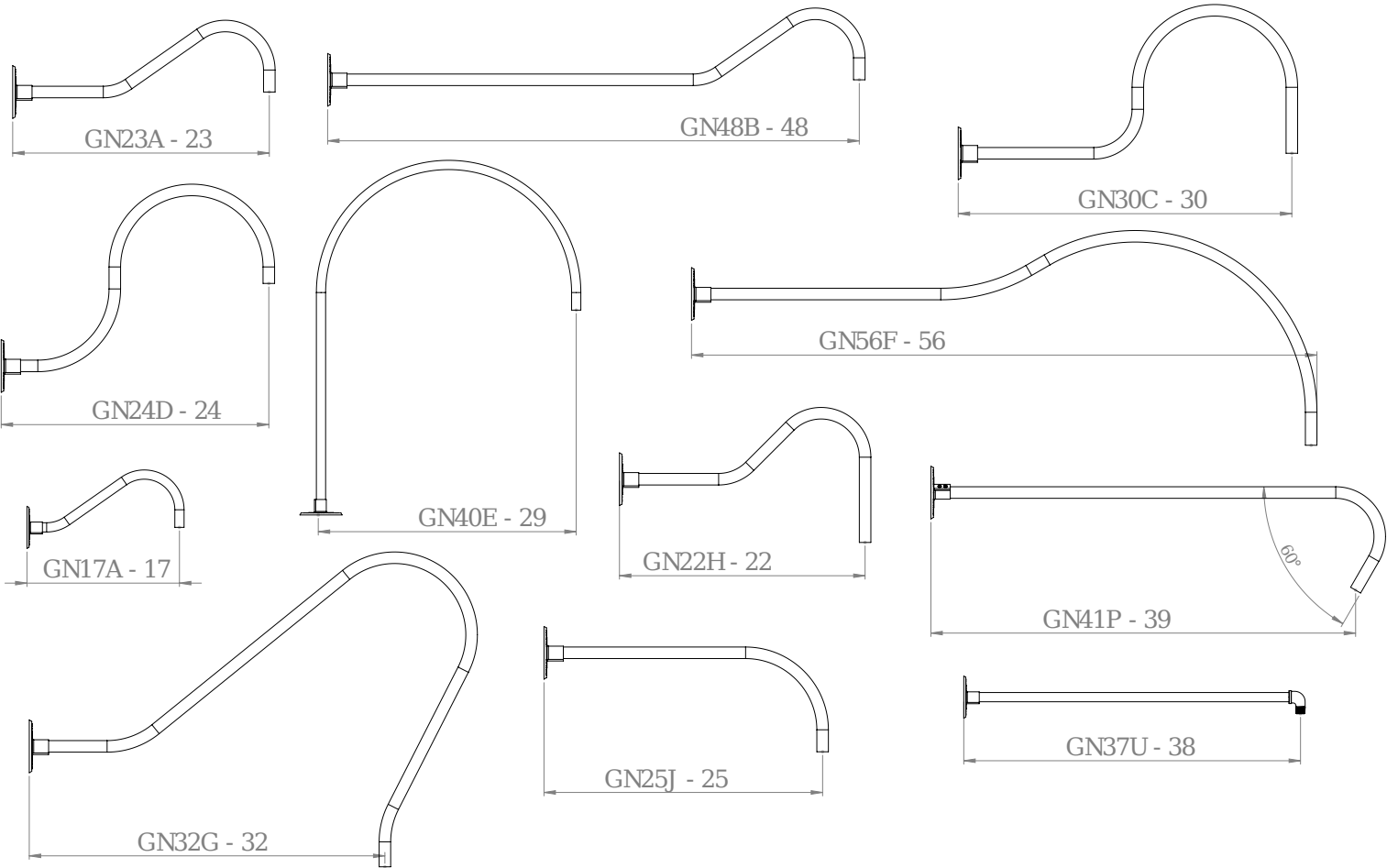
Step Neck Angle - Gooseneck Mounted

Standard Color Option



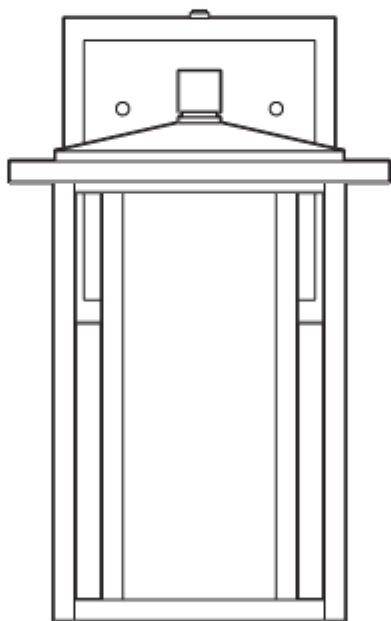
Gooseneck option

Step Neck Angle - Gooseneck Mounted



USE AND CARE GUIDE

LED OUTDOOR WALL LANTERN



Questions, problems, missing parts? Before returning to the store,
call Home Decorators Collection Customer Service
8 a.m. - 7 p.m., EST, Monday – Friday, 9 a.m. – 6 p.m., EST, Saturday

1-800-986-3460

HOMEDEPOT.COM/HOMEDECORATORS

Home Decorators Collection

Mauvo Canyon 15.5 in. Black Dusk to Dawn LED Outdoor Wall Light Fixture Porch Sconce with Seeded Glass

★★★★★ (974) Questions & Answers (140)

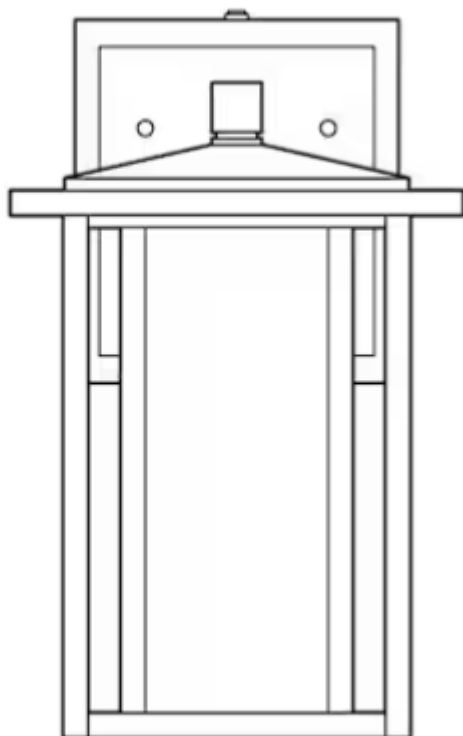


Hover Image to Zoom



width
7.5 in.
(19 cm)

height
15.5 in.
(39.4 cm)



depth
8.5 in.
(21.6 cm)



Warm White

INTEGRATED
LED
TECHNOLOGY

690

Lumens

VL

Line Voltage



LIGHTING PERFORMANCE

LIGHT OUTPUT
(Lumens)

690

WATTS

12.45

LUMENS PER WATT
(Efficacy)

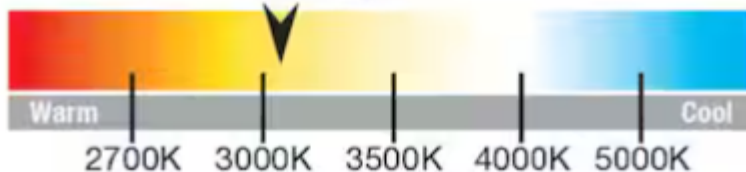
55.42

COLOR ACCURACY
(CRI)

80

LIGHT APPEARANCE (CCT)

3123K





MODEL: **SPJ-FB-275-3**
MATERIAL: **Cast Brass**
FINISH SHOWN: **Matte Bronze**
ELECTRICAL: **8-15V, 120V**
WATTAGE: **2W**
ENGINE: **FB-2W-CYL-TA16**
LUMENS: **150**
OPTIC: **Wide Angle Flood**
MOUNTING: **Recessed**

FINISHES

- ☐ Matte Bronze (MBR)
- ☐ Verde (V)
- ☐ Moss (M)
- ☐ Black (B)
- ☐ Rusty (R)
- ☐ Satin Brass (SB)
- ☐ Aged Brass (AG)
- ☐ Raw Copper (RC)
- ☐ Natural Copper (NC)

PVD PREMIUM

- ☐ PVD Polished (PVDP)
- ☐ PVD Satin (PVDS)
- ☐ PVD Graphite (PVDG)
- ☐ PVD Bronze (PVDBZ)
- ☐ PVD Black (PVDBL)

WATTAGE LUMENS

- | | |
|-----------------------------|-----|
| <input type="checkbox"/> 1W | 80 |
| <input type="checkbox"/> 2W | 150 |
| <input type="checkbox"/> 3W | 200 |
| <input type="checkbox"/> 6W | 300 |

Custom lumen packages are available upon request

COLOR TEMPERATURE

- | | |
|--------------------------------|-------------------------------------|
| <input type="checkbox"/> 2200K | <input type="checkbox"/> 5000K |
| <input type="checkbox"/> 2700K | <input type="checkbox"/> 6500K |
| <input type="checkbox"/> 3000K | <input type="checkbox"/> RGBW |
| <input type="checkbox"/> 4000K | <input type="checkbox"/> AMBER (TF) |

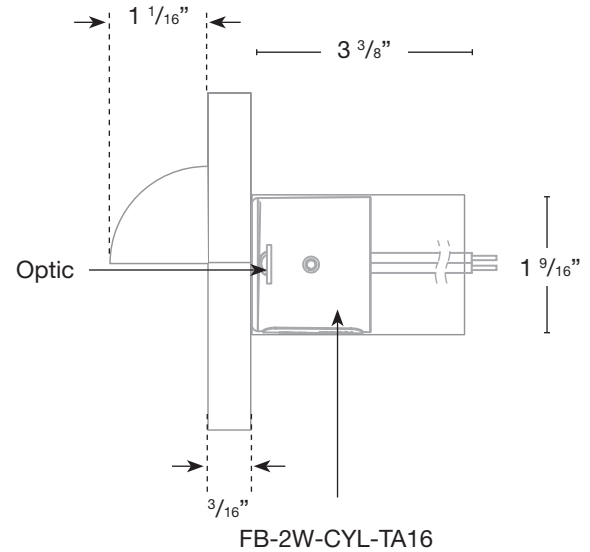
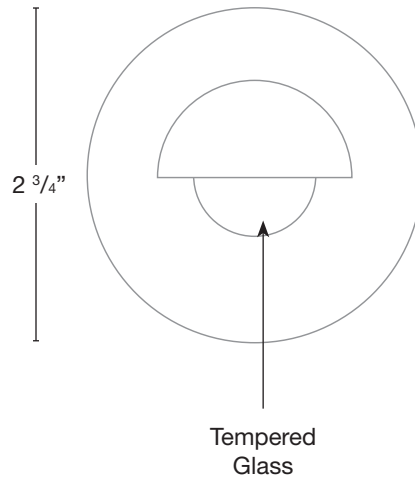
Custom options are available

ELECTRICAL

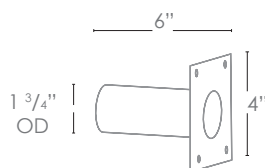
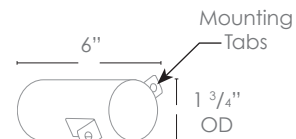
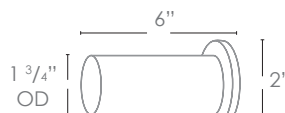
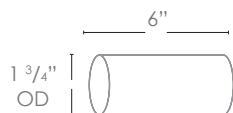
- ☐ 8-15V ☐ 120V

OPTICS

- | | |
|---|------|
| <input type="checkbox"/> SPOT | 19d |
| <input type="checkbox"/> FLOOD | 38d |
| <input type="checkbox"/> WIDE FLOOD | 54d |
| <input type="checkbox"/> WIDE ANGLE FLOOD | 120d |



Concrete Pour Sleeve



Wet Listed



Ordering Example

Customer Approval

Date

SPJ-FB-275-3-MBR-2W-27K-8-15V