





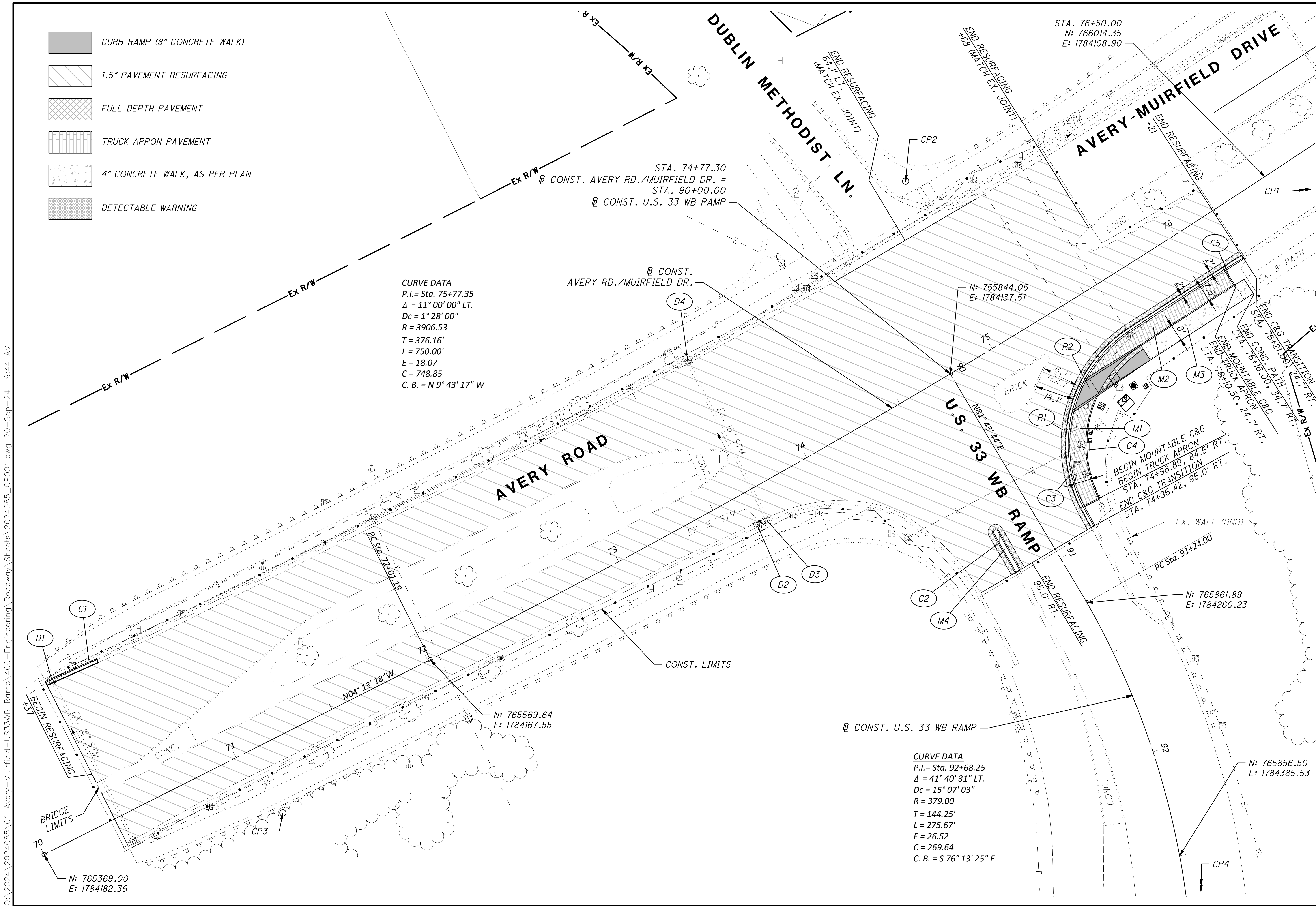
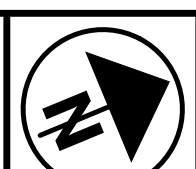


-  CURB RAMP (8" CONCRETE WALK)
-  1.5" PAVEMENT RESURFACING
-  FULL DEPTH PAVEMENT
-  TRUCK APRON PAVEMENT
-  4" CONCRETE WALK, AS PER PLAN
-  DETECTABLE WARNING

CURVE DATA
 P.I. = Sta. 75+77.35
 $\Delta = 11^\circ 00' 00''$ LT.
 $D_c = 1^\circ 28' 00''$
 $R = 3906.53$
 $T = 376.16'$
 $L = 750.00'$
 $E = 18.07$
 $C = 748.85$
 $C. B. = N 9^\circ 43' 17'' W$

CURVE DATA
 P.I. = Sta. 92+68.25
 $\Delta = 41^\circ 40' 31''$ LT.
 $D_c = 15^\circ 07' 03''$
 $R = 379.00$
 $T = 144.25'$
 $L = 275.67'$
 $E = 26.52$
 $C = 269.64$
 $C. B. = S 76^\circ 13' 25'' E$





 0 10 20 40
 HORIZONTAL
 SCALE IN FEET
 CALCULATED BHF CHECKED KJG

INTERSECTION PLAN

AVERY-MUIRFIELD DR. & U.S. 33 WB RAMP SIGNAL IMPROVEMENTS

O:\2024\2024085\01 Avery-Muirfield-US33WB Ramp\400-Engineering\Roadway\Sheets\2024085_GP001.dwg 20-Sep-24 9:44 AM