

6'-9 3/4"

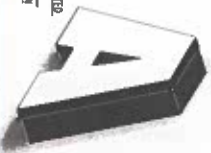
SOUTH COLLEGE

62'-4"

#S1-2552.25: FLUSH MOUNT (LED) ILLUMINATED CHANNEL LETTERS 1/8" x 1-0"

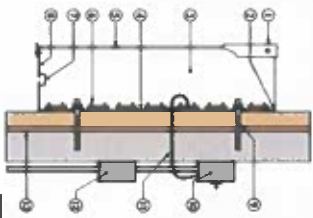
300 SQFT

DIGITAL FLUSH MOUNTED CHANNEL LETTERS 3 DIMENSIONAL VIEW



- LOGO: WHITE ALUMINUM CHANNELS.
 - LOGO FACE: WHITE ACRYLIC WITH BLACK TRIM-CAP AND DIGITALLY PRINTED VINYL OVERLAY.
 - ILLUMINATION: WHITE LEDS.
 - LETTERS: WHITE ALUMINUM CHANNELS.
 - LETTER FACES: WHITE ACRYLIC WITH BLACK TRIM-CAP.
 - ILLUMINATION: WHITE LEDS.
- VECTOR OR HIGH RESOLUTION ARTWORK IS REQUIRED FROM CLIENT PRIOR TO PRODUCTION.**

FLUSH MOUNT LED FACE-LIT CHANNEL LETTERS



1. FACE TRIM-CAP
2. SILICONE SEAL - TYPICAL
3. INTERIOR PAINTED WHITE
4. JAGT ALUMINUM BACK
5. ACRYLIC FACE
6. LED MODULES
7. NEEPE HOLES (BUSHES AS REQUIRED)
8. JAGT ALUMINUM RETURN
9. VOLT. X 4' LONG ALL-TIMEAD WITH SILICONE ADHESIVE
10. LOW VOLTAGE LED POWER SUPPLY WITH DISCONNECT
11. 18 GA. OUTDOOR LOW VOLTAGE WIRE TO THE LEDS
12. 20 AMP / 120 VOLT JUNCTION BOX BY OTHERS
13. 1 1/2" EPS OVER SIPR PLYWOOD ON STUDS @ 16" O/C



PROPOSED CONCEPTUAL 3/31/11 1-0"

DANTE SIGN CO.

Proudly Serving Central Ohio Since 1951
1640 Harmon Ave. Columbus, Ohio, 43223
(614) 494-3333
www.dantesign.com

UL LISTED via STANDARD U48
FILE NO.E60042 DANTE SIGN CO

IN APPLIES TO
ILLUMINATED SIGNAGE ONLY
The location of the disconnect switch after installation shall comply with Section 908.010 of the National Electrical Code



EXISTING STOREFRONT

COLORS

- WHITE
- BLACK
- DIGITALLY PRINTED VINYL OVERLAY

APPROVED-CLIENT DATE

KSA KSA SIGN ASSOCIATION **MAE W-Q** WORLD SIGN ASSOCIATES

JOB NO: 1070 SOUTH COLLEGE #S1-2552.25
 CITY: 5525 PARKCENTER CIRCLE
 CITY STATE: DUBLIN, OH
 SIGN TYPE: WALL SIGN
 DATE: 10/29/09 REV. DATE:
 FILE #/JOB: SOUTH COLLEGE.CDR
 CONNECTION: BELLA * 2025 * S

SCALE: AS NOTED Scale: 1/8" = 1'-0" BM