

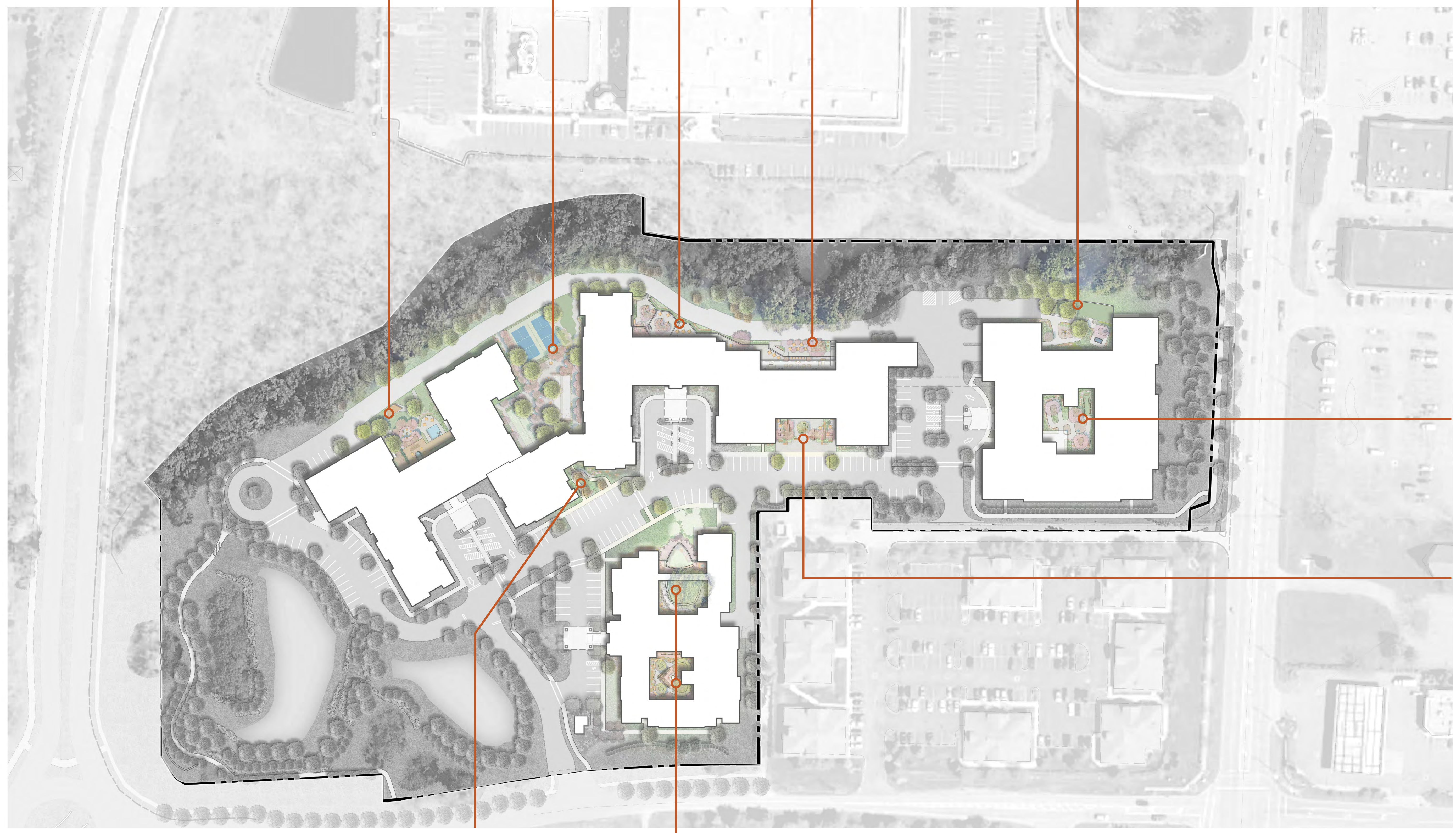
PRIVATE COURTYARD + POOL

ATHLETICS + RECREATION COURTYARD

COMMUNITY GARDEN

PRIVATE DINING + OUTDOOR COURTYARD

PRIVATE OUTDOOR COURTYARD

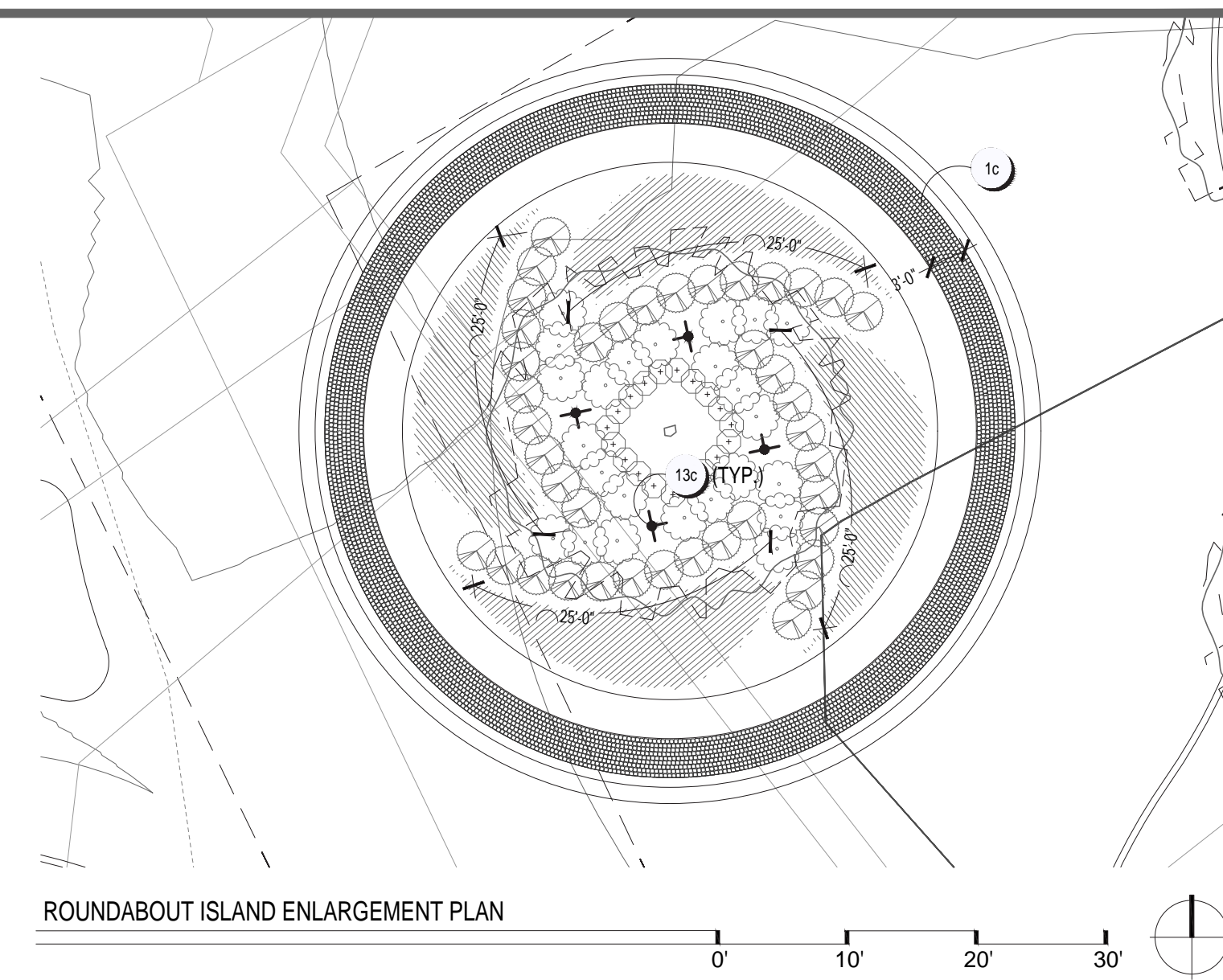
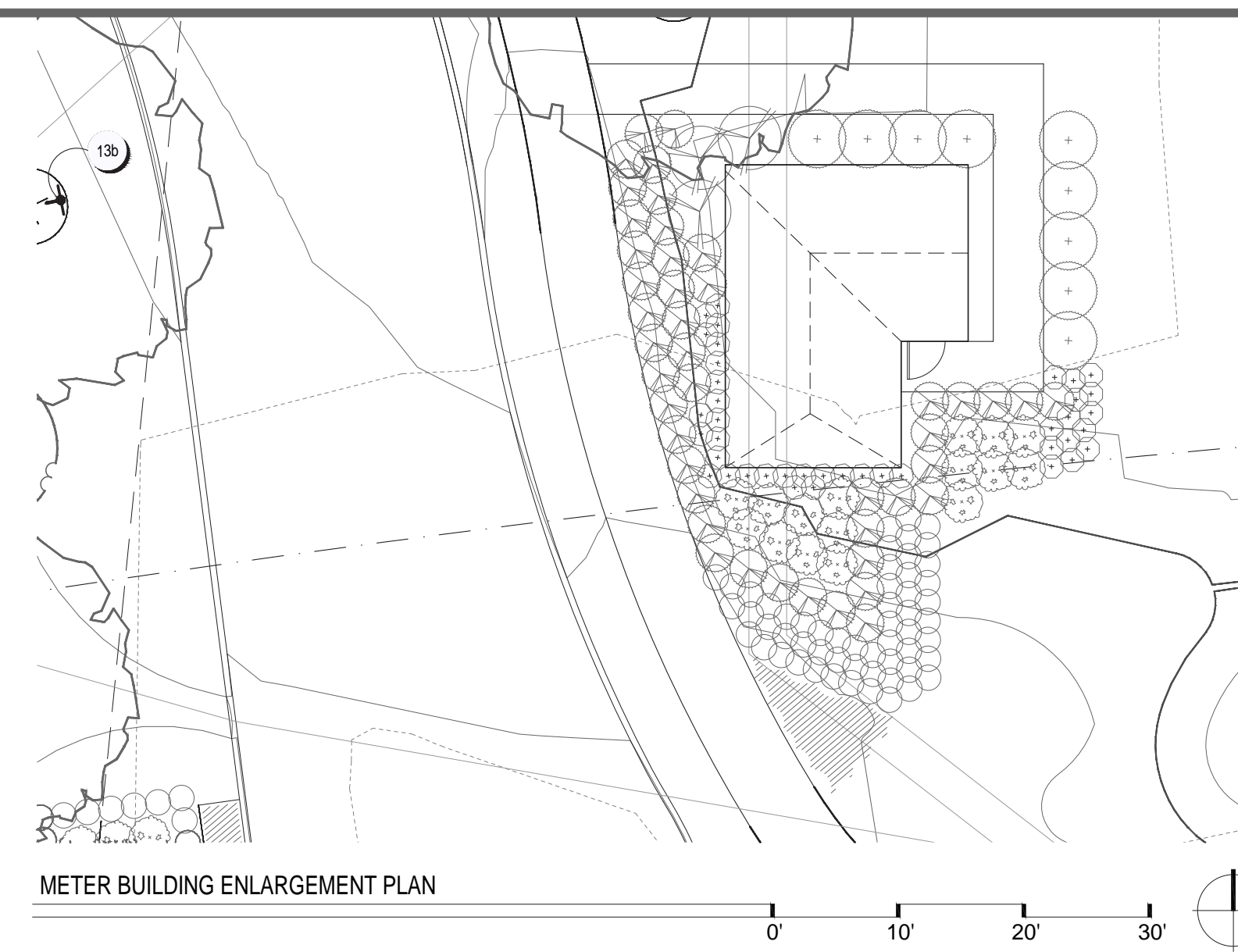
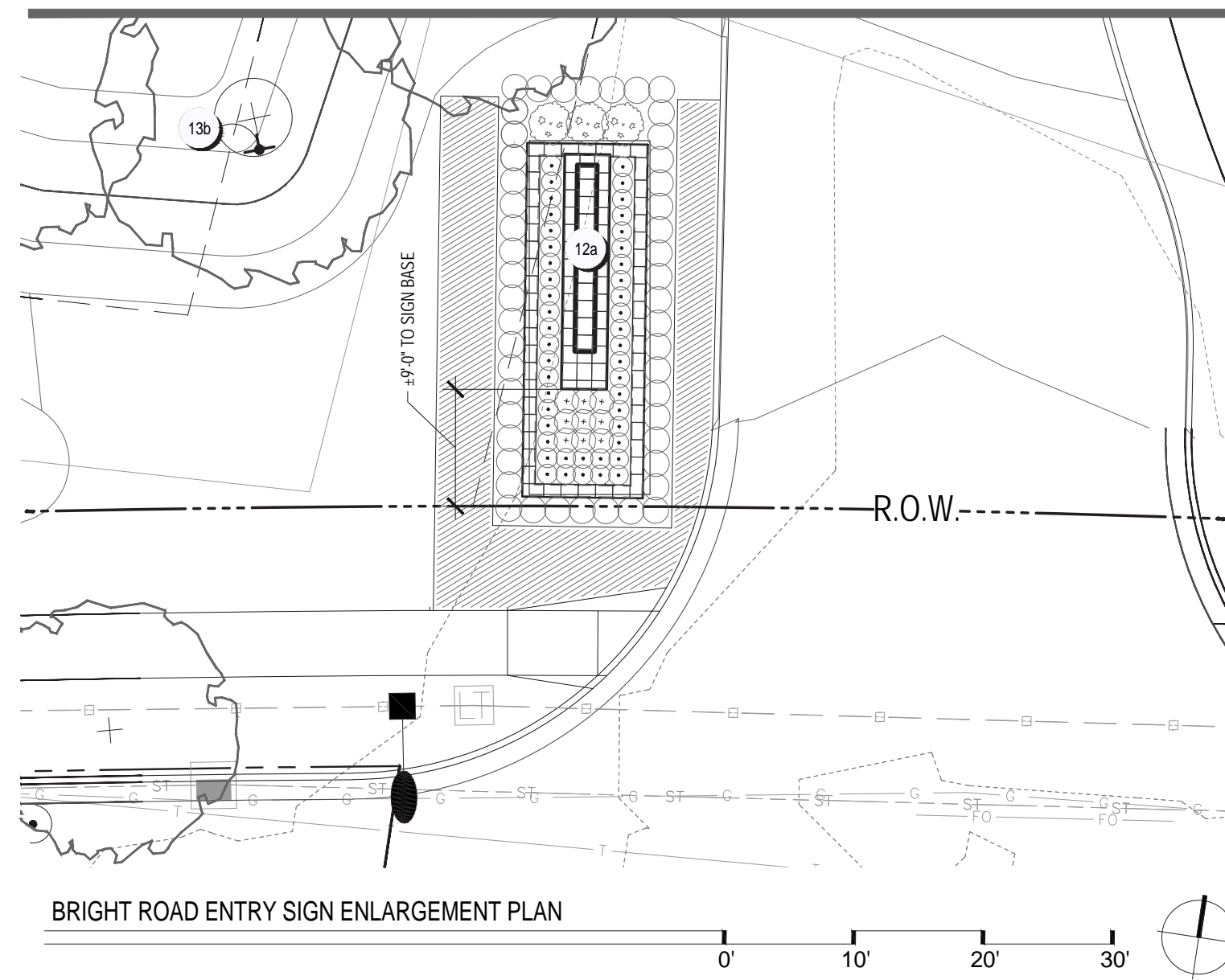


PRIVATE ENCLOSED COURTYARD

OUTDOOR COURTYARD

OUTDOOR COURTYARD

PRIVATE ENCLOSED COURTYARD



PROJECT FOR:



SEAL

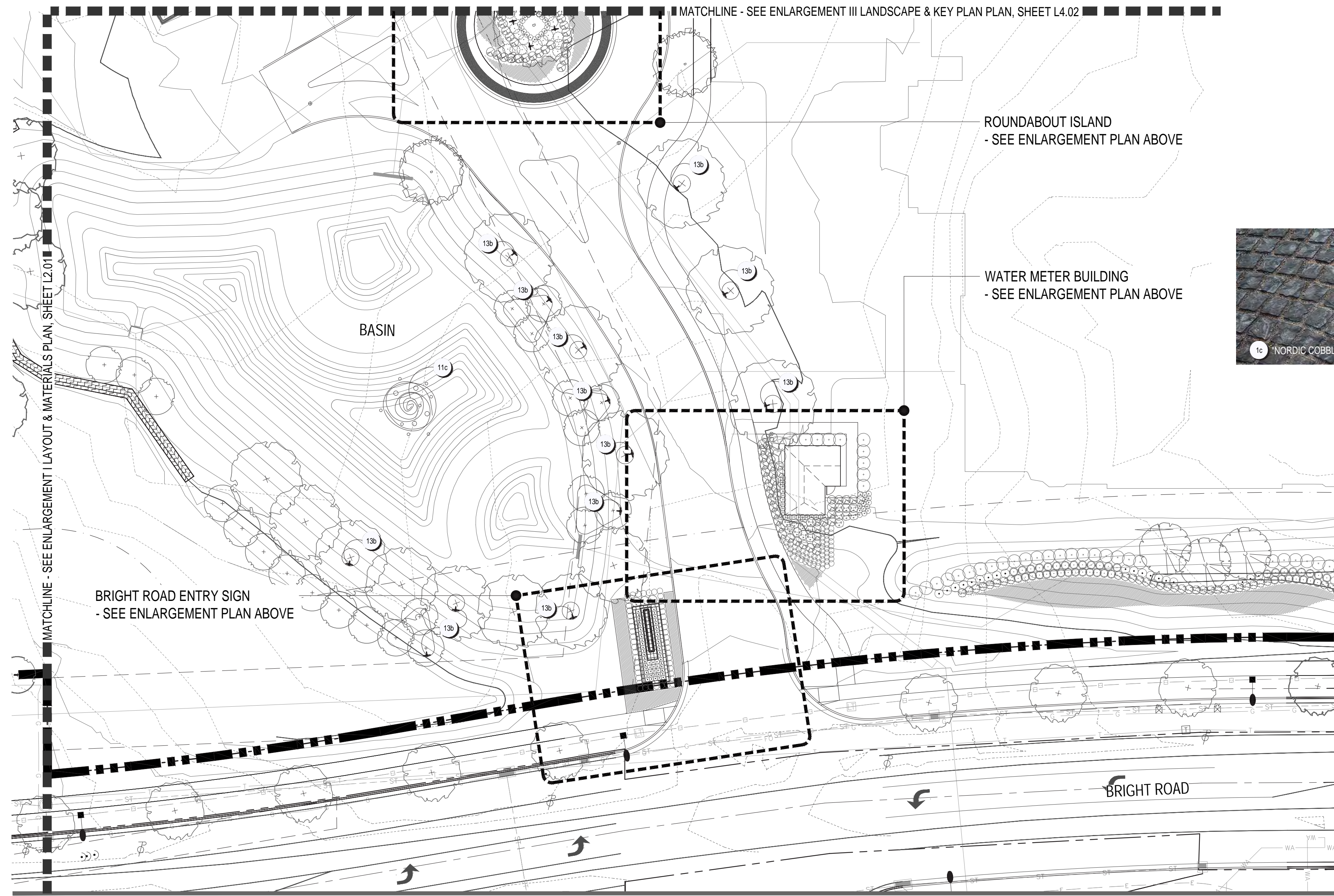
CHECK SET
Not For Construction

DESIGN TEAM

Civil Engineer: Orange frog Design Group
761 Science Boulevard, Suite 100
Gahanna, Ohio 43230
p 614.428.7750

Architect: Orange frog Design Group
629 N High St, 4th Floor
Columbus, Ohio 43215
p 614.290.4131

Landscape Architect: G2 Planning and Design
720 E. Broad St, Suite 200
Columbus, Ohio 43215
p 614.583.9230



CODED LAYOUT & MATERIALS NOTES

KEY	ITEM	REFERENCE	NOTES
1c	CONCRETE PAVERS	B L3.01	"NORDIC COBBLE" PAVERS IN GRANITE FUSION (OR OWNER-APPROVED EQUAL) AVAILABLE FROM UNLOCK
4a	STONE SLAB WALL	-	"SALT CREEK BUFF" AND/OR "OTTAWA SMOOTH" SLABS (OR OWNER-APPROVED EQUAL) AVAILABLE FROM LANG STONE: 614.228.5489
11c	FOUNTAIN	F L7.01	FOUNTAIN: AIRMAX ECOSERIES (OR OWNER-APPROVED EQUAL) 1/2 HP, 115 VOLT. PROVIDE 120V GFCI OUTLET. FINAL SPEC AND OPTIONS BY OWNER. AVAILABLE THROUGH FOUTECH: 1-614-539-4670.
11b	FOUNTAIN CONTROL PANEL	-	FOUNTAIN: AIRMAX 115V/15A PLUG & PLAY CONTROL PANEL (OR OWNER-APPROVED EQUAL). FINAL SPEC AND CONTROL OPTIONS BY OWNER. AVAILABLE THROUGH FOUTECH: 1-614-539-4670.
11c	FOUNTAIN POWER CORD	-	FOUNTAIN: AIRMAX 150' POWER CORD (OR OWNER-APPROVED EQUAL). FINAL CORD SPEC AND LENGTH BY OWNER. AVAILABLE THROUGH FOUTECH: 1-614-539-4670.
12a	PROJECT IDENTIFICATION SIGN	A L3.11	DOUBLE-SIDED MONUMENT SIGN WITH MASONRY BASE SEE DETAIL A, SHEET L3.11 FOR MORE INFORMATION
13a	LV TRANSFORMER/CONTROLLER	-	FX LUMINAIRE LUXOR CONTROLLER/TRANSFORMER. (OR OWNER-APPROVED) PROVIDE GFCI OUTLET AND SLEEVING FOR LV WIRING PER CURRENT NEC CODE.
13b	NARROW SPREAD UPLIGHT	-	FX LUMINAIRE UPLIGHT NP-ZDC-6LED-FB DIMMABLE/RGBW (OR OWNER-APPROVED).
13c	WIDE SPREAD UPLIGHT	-	FX LUMINAIRE UPLIGHT PB-ZDC-...-FB DIMMABLE/RGBW (OR OWNER-APPROVED).

REVISIONS

date	issued	notes

drawn by: STW checked by: PEM
issue date: 05.14.26 PROJECT NO.: 22049

SITE ENLARGEMENT II LAYOUT & MATERIALS PLAN

L3.01

CODED LAYOUT & MATERIALS NOTES

KEY	ITEM	REFERENCE	NOTES
10c	6' BENCH	A L7.04	SEE DETAIL A, SHEET L7.04 FOR MORE INFORMATION

PROJECT FOR:



SEAL

CHECK SET
Not For Construction

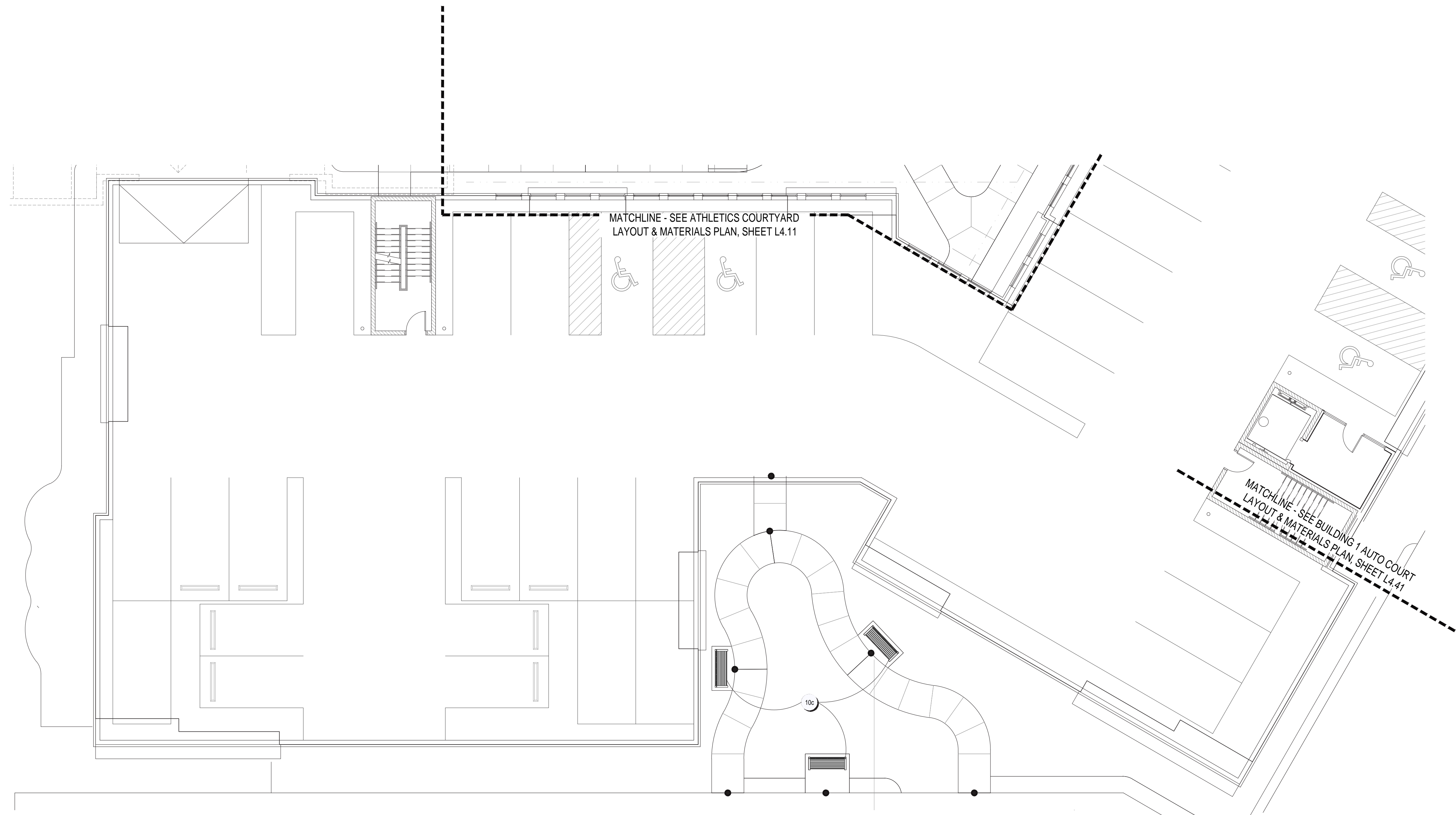
DESIGN TEAM

Civil Engineer: Orange frog Design Group
783 Science Boulevard, Suite 100
Gahanna, Ohio 43230
p 614.426.7750

Architect: Orange frog Design Group
629 N High St. 4th Floor
Columbus, Ohio 43215
p 614.230.4131

Landscape Architect

G2 Planning and Design
720 E. Broad St. Suite 200
Columbus, Ohio 43215
p 614.583.9230



FINAL DEVELOPMENT PLAN
FOR
THE BEACON C.C.R.C. - PHASE I
Sawmill Road
City of Dublin, Ohio 43016

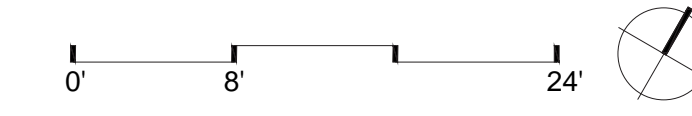
REVISIONS

date	issued	NOTES

drawn by: STW issue date: 03.16.26 checked by: PEM PROJECT NO.: 22049

BLDG. 1 SOUTHWEST LAYOUT & MATERIALS PLAN

L4.31





FIRE LANE / PEDESTRIAN WALKWAY

CONCRETE SIDEWALK

ASPHALT SIDEWALK

