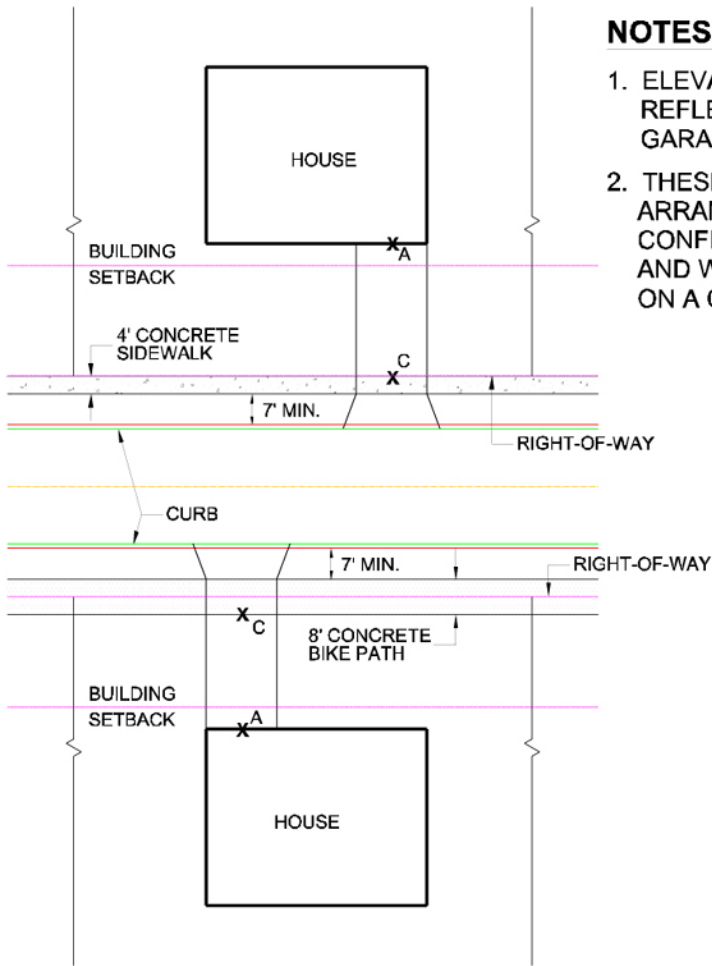


NOTES:

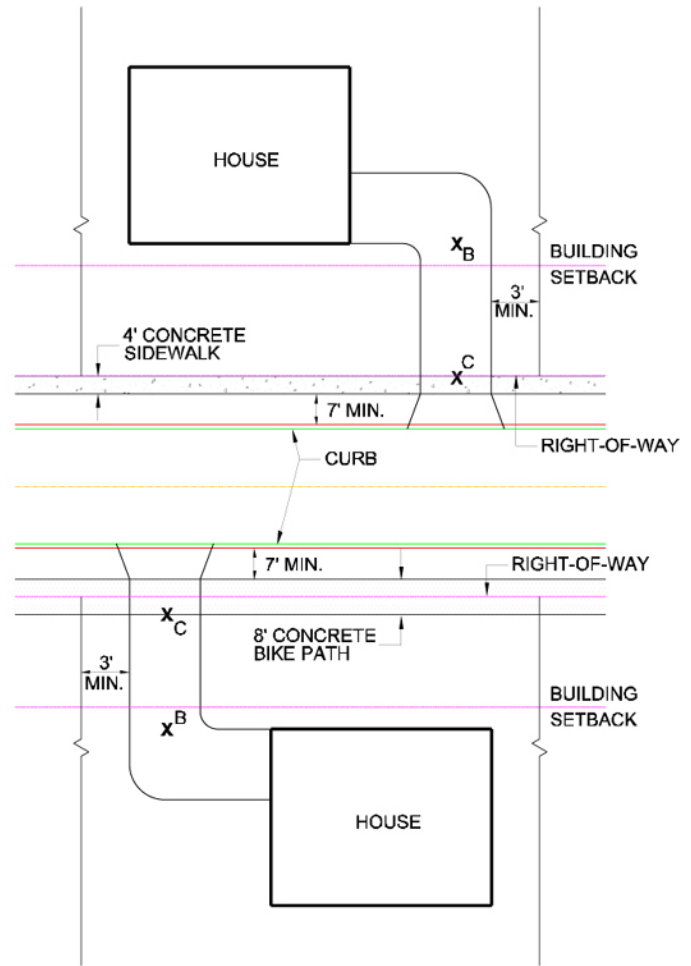
1. ELEVATION 'B' SHALL TYPICALLY REFLECT A 2% SLOPE FROM THE GARAGE FLOOR.
2. THESE ARE TYPICAL DRIVEWAY ARRANGEMENTS. OTHER CONFIGURATIONS CAN OCCUR AND WILL BE REVIEWED ON A CASE BY CASE BASIS.



TYPICAL FRONT LOAD GARAGE

A = ELEVATION OF THE GARAGE FLOOR
 C = ELEVATION AT THE BACK EDGE OF THE PEDESTRIAN PATH

$$\text{SLOPE} = \frac{A - C}{\text{DISTANCE BETWEEN A \& C}} \times 100\% \leq 8.00\%$$



TYPICAL SIDE LOAD GARAGE

B = ELEVATION OF THE DRIVEWAY
 C = ELEVATION AT THE BACK EDGE OF THE PEDESTRIAN PATH

$$\text{SLOPE} = \frac{B - C}{\text{DISTANCE BETWEEN B \& C}} \times 100\% \leq 8.00\%$$

APPROVED:

DIRECTOR OF ENGINEERING / CITY ENGINEER _____ DATE _____

DRIVEWAY SLOPES

INITIAL DATE: **03.04.03** REVISED DATE: **00.00.00**

STANDARD DRAWING NO. **0000** PAGE 1 OF 1