



BRIDGE PARK

DUBLIN, OH

FIBER CEMENT PANEL CHARACTERISTICS:

- 7/16" commercial grade panels
- Panelized reveal system or battens for distinct look on each building.
- Engineered for superior durability in all climate conditions.
- Ventilated rain screen assembly for moisture management.

Technical Attributes HardiePanel™ Vertical Siding

James Hardie Building Products, Inc.
HardiePanel™ Vertical Siding has been comprehensively tested and displays the following typical physical properties.

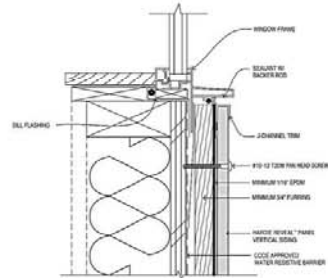
General Property	Test Method	Unit or Characteristic	Requirement	Result
PHYSICAL ATTRIBUTES	ASTM C1185	Length	± 0.5%	Pass
	ASTM C1185	Width	± 0.5%	Pass
	ASTM C1185	Thickness	± 0.04 in.	Pass
	ASTM C1185	Squareness	< 1/32 in./ft. of length	Pass
ASTM C1185	Edge Straightness	< 1/32 in./ft. of length	Pass	
Density, lb/ft ³	ASTM C1185		As reported	< 82
Water Absorption, % by mass	ASTM C1185		As reported	< 36
Water Tightness	ASTM C1185	Physical Observations	No drop formation	Pass
Moisture Content, %	ASTM C1185		As reported	≤ 5
Moisture Movement, % Linear Change	ASTM C1185	30 – 90% Relative Humidity	As reported	≤ 0.05
Flexural Strength	ASTM C1185	Wet conditioned, psi	> 1015 psi	Pass
	ASTM C1185	Equilibrium conditioned, psi	> 1450 psi	Pass
THERMAL	ASTM C177	$k_w = 8T_u / (t_e R) - F$	As reported	2.07
	ASTM C177	(k _a)	As reported	6.62
	ASTM C177	R – 1/k _w	As reported	0.48
	ASTM C177	(R _s)	As reported	0.15
DURABILITY	ASTM C1185	Physical Observations	No visible cracks or structural alteration	Pass
	ASTM C1185	Warm Water, % wet retention	± 65%	Pass
	ASTM C1185	Physical Observations	No visible cracks or structural alteration	Pass
	ASTM C1185	Physical Observations	No visible cracks or structural alteration	Pass
	ASTM C1185	Mass Loss, %	≤ 3.0	Pass
UV Accelerated Weathering Test	ASTM C1185	Freeze/Thaw, % wet retention	± 80%	Pass
	ASTM G23	Physical Observations	No cracking, checking, or crazing	Pass
FIRE CHARACTERISTICS	ASTM E84	Flames Spread Index (FSI)	0	Pass
	ASTM E84	Smoke Developed Index (SDI)	≤ 5	Pass
	ASTM E84	Fuel Contributed	0	Pass
		NFPA Class	As reported	A
		Uniform Building Code™ Class	As reported	1
		International Building Code™ Class	As reported	A
Noncombustibility	ASTM E136	Noncombustible	Pass/fail	Pass
Fire Resistance Rated Construction	ASTM E119	Fire Resistance Rating	1-hour	Note 1

Note 1: Listed on Warnock Hersey and ICC-ES ESR-1045

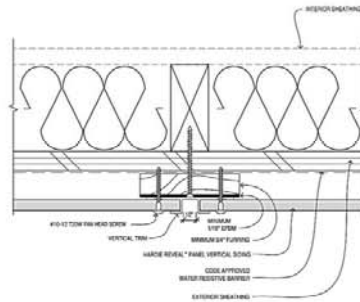
NOTE: In addition to the above product properties, building assemblies incorporating this product have been tested for fire and impact performance.

© 2007 James Hardie International Finance B.V. All rights reserved. TM, SM, and ® denote trademarks or registered trademarks of James Hardie International Finance B.V.

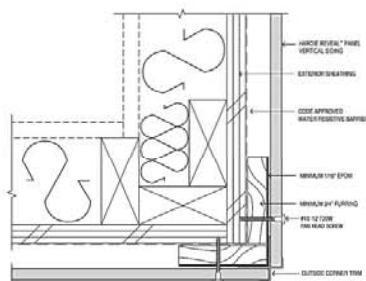
Additional installation information, warranties, and warnings are available at www.jameshardie.com



WINDOW SILL



VERTICAL REVEAL JOINT



CORNER TRIM



Lennox Apartments



Board and Batten



Cement Fiber Board Reveal System



C1-C2-C3-C4

FIBER CEMENT BOARD DETAILS

MOODY•NOLAN
RESPONSIVE ARCHITECTURE

02-26-2015



BRIDGE PARK

DUBLIN, OH

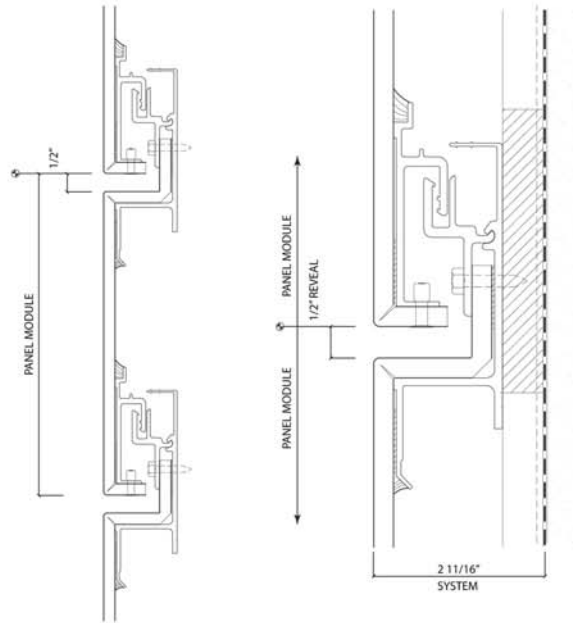
CENTRIA FORMABOND used at building C2 only

Description

FormaBond MCS Panels create a dry seal exterior wall system through the use of a unique joinery system. With continuous venting along the length of each joint, the panel system is a high performance Pressure Equalized Rainscreen System even with an imperfect air barrier. Panels are available in a 2 11/16" thickness and offer various reveal widths up to 6". FormaBond thickness offers enhanced structural and surface impact strength and is the ideal choice for high human interaction zones on buildings.

General Design Options

PLANK DEPTH	8mm.
SYSTEM DEPTH	2 11/16"
MAXIMUM MODULE	5' - 6"
MINIMUM MODULE	6 1/2"
MAXIMUM HORIZONTAL PANEL SIZE	15' x 5'
MAXIMUM VERTICAL PANEL SIZE	5' x 15'
STANDARD PLANK SKIN THICKNESS	.020"
OPTIONAL PLANK SKIN THICKNESS	.032"
HORIZONTAL STANDARD REVEAL	1/2"
HORIZONTAL OPTIONAL REVEAL	1" - 6"
VERTICAL STANDARD REVEAL	1/2"
VERTICAL OPTIONAL REVEAL	5/8" - 6"
PANEL LENGTH MAX	15'
PANEL SYSTEM WEIGHT	<2 lbs. per sq. ft.
STANDARD VERTICAL JOINT MATERIAL	Spline
OPTIONAL VERTICAL JOINT MATERIAL	Gasket
STANDARD TEXTURE	Smooth
OPTIONAL TEXTURE	Embossed
CURVED APPLICATIONS	Contact CENTRIA
FINISHES	See CENTRIA Color Chart



02-26-2015

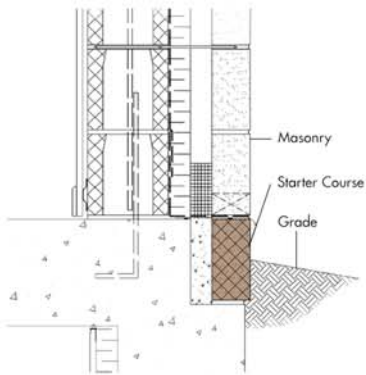


BRIDGE PARK

DUBLIN, OH

Incorporate an
Adair® Limestone Starter Course
Starter Course

Installing a starter course of Adair® dolomite will maintain the aesthetic integrity of the masonry. Its greater density and lower absorption is ideally suited to resist the conditions at grade.



Adair® Limestone starter course



Top Left:
4501 North Fairfax Office Complex
Fairfax, VA
WOG Architects
Renaissance® Wheat Sandblasted

Top Right:
Providence
Palatine, IL
Tinaglia Architects
Renaissance® White Sandblasted

Left:
Saint Nektarios Southeast
Greek Orthodox Parish, Inc.,
Charlotte, NC
One on One Design
Renaissance® Custom Color Smooth and Rocked



Below:
St. George 5th Court House
St. George, UT
VCRD Architecture
Renaissance® Custom Color Clef Rocked



ARRISCRAFT STONE is used at buildings C1 & C4/ C5



THE ARRISCRAFT ADVANTAGE:

- High strength, high density, and natural absorption translate into superior durability;
- Exceptionally tight dimensional tolerances;
- No cement or chemical additives; Renaissance® is not subject to the degree of shrinkage associated with cement-based products;
- Consistent color throughout the entire stone; Renaissance® can be cut, chiseled and dressed in the field while maintaining its color and texture.
- Arriscraft products can contribute to LEED® points and to sustainability in the LEED categories of Energy and Atmosphere, Materials and Resources, and Innovation in Design.
- Arriscraft offers an industry-unique Lifetime Product Warranty.

02-26-2015