



# BRIDGE PARK

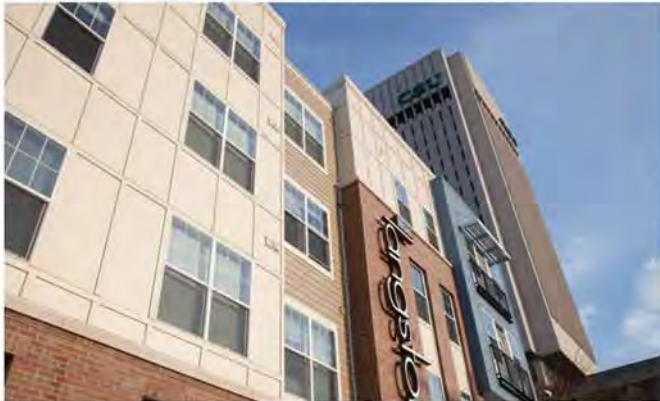
DUBLIN, OH



Vinyl Casements, awnings, and Patio Doors – The Benchmark  
COLUMBUS



Vinyl Windows Single Hungs and Patio Doors – Palmer House (Clubhouses for both are Premium Painted vinyl),  
by Preferred Living  
NEW ALBANY



Vinyl Windows Single Hungs – The Langston: Cleveland State University off campus  
housing by Corna Kokosing

#### Benefits:

- Vinyl windows offer a high thermal performance, low maintenance alternative to other materials.
- The Green aspects of using a locally manufactured product, from a global manufacturer (as well as the service benefits this provides)
- Vinyl is not the low-grade “cheap” material that it once was. Product lifespan as well as structural and thermal properties have drastically improved with the new generation of vinyl windows.

02-26-2015



# BRIDGE PARK

DUBLIN, OH



Single Hungs and Patio Doors –Grandview Yard, by Nationwide Realty Investors  
GRANDVIEW



-Vinyl windows are known for their superior energy efficiency, long term durability, solid craftsmanship, and the ultra-smooth operation that makes the windows easy to open or close.

-Vinyl windows are factory painted with unlimited custom colors. More importantly, the 6-step paint system is backed by a 10 year warranty finish.

-They portray clean, classic lines, contoured exterior styling and seamless finishes.

02-26-2015



# BRIDGE PARK

DUBLIN, OH

## INSTALLATION DETAILS

Outsulation systems typically consist of the following components, as determined by code and performance requirements.



## EIFS CLEANING AND RESTORATION



EIFS ALLOWS A NUMBER OF OPTIONS TO RESTORE A BUILDING BACK TO NEW WITH CLEANING AND RECOATING APPLICATIONS.

02-26-2015



# BRIDGE PARK

DUBLIN, OH



COLUMBUS CONVENTION CENTER



COLUMBUS CONVENTION CENTER



COLUMBUS CONVENTION CENTER



MARRIOTT FAIRFIELD INN & SUITES  
COLUMBUS REGIONAL AIRPORT



EASTON



EASTON



SHORT NORTH

02-26-2015



# BRIDGE PARK

DUBLIN, OH



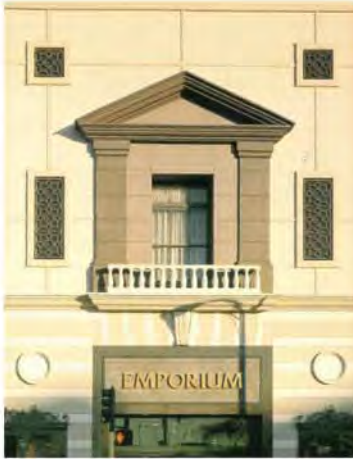
Retail Center, Sioux Falls, SD



Sakre & Siran Gabrielian Child Care Learning Center, Hickorysack, NJ



Royal Private Residences, Kirkwood, BC



Retail Center, Sioux Falls, SD



## EIFS DURABILITY:

-All Outsulation systems incorporate alkali and fire-resistant fibreglass mesh that is embedded into the base coat over the entire surface of the insulation board.

-This combination provides the primary weather barrier, as well as tensile strength and impact resistance for the system, and these factors all play a critical role in protecting the physical integrity and beauty of the building exterior.

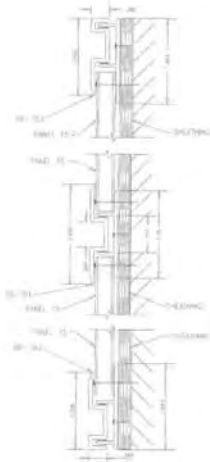
-Heavy mesh backup will be used at reachable locations such as balconies for abuse resistance.

02-26-2015



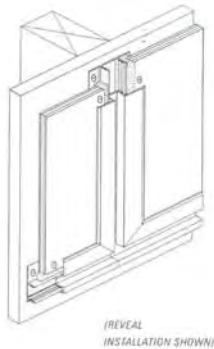
# BRIDGE PARK

DUBLIN, OH



P15 PROJECT	FREMONT ROAD SCHOOL
OWNER	FREMONT SCHOOL DISTRICT
LOCATION	MUNDELEIN, IL
ARCHITECT	LEGAT ARCHITECTS, IL
INSTALLER	M & E CONSTRUCTION
SYSTEM	2-PART REVEAL MOLDINGS
SOLD BY	S & S PANEL SALES, IL

PANEL FEATURES 15 YEAR WARRANTY, DURABILITY, PROVEN INDUSTRY			
FACE	.010" TEXT ALUM	WEIGHT	1.10 LBS/SQ FT
CORE	5/16" EXT. PLYWOOD	R-VALUE	1.16
BACK	.004" FOIL VAPOR BARRIER	STIFFNESS	33,000 LB-IN/FT <sup>2</sup>
THICKNESS	5/16" NOMINAL	IMPACT	300 FT/LB
SIZES	48" X 96" UP TO 60" X 120"	FLAME	CLASS A
FINISH	PPG TRUFORM® COATING		



## CITADEL PANEL 15 used at buildings C1, C3, C4 / C5

► **DURABLE.** A benchmark of quality for over 30 years, Panel 15® was designed to provide an economical, long-lasting solution in a laminated wood-core panel.

Named for its 15-Year Standard Warranty, these panels are ideal for cladding, fascia, soffits and accent bands.

And with 20 molding profiles available, you can create virtually any look and be confident it will remain for years to come.



02-26-2015



# BRIDGE PARK

DUBLIN, OH

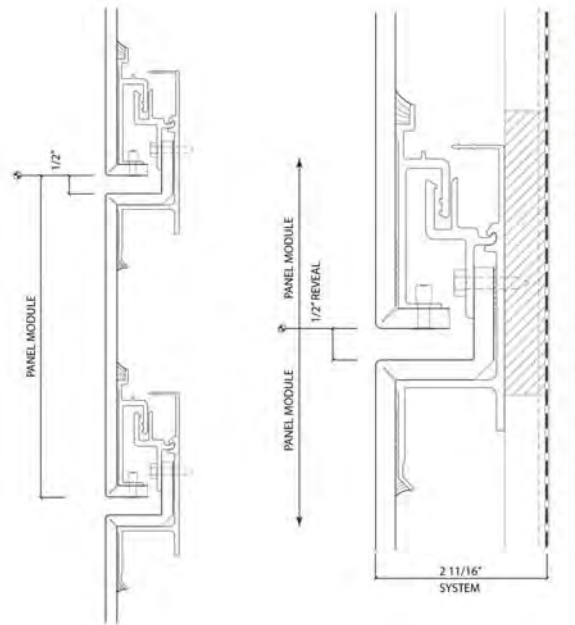
**CENTRIA FORMABOND used at building C2 only**

## Description

FormaBond MCS Panels create a dry seal exterior wall system through the use of a unique joinery system. With continuous venting along the length of each joint, the panel system is a high performance Pressure Equalized Rainscreen System even with an imperfect air barrier. Panels are available in a 2 11/16" thickness and offer various reveal widths up to 6". FormaBond thickness offers enhanced structural and surface impact strength and is the ideal choice for high human interaction zones on buildings.

## General Design Options

PLANK DEPTH	8mm
SYSTEM DEPTH	2 11/16"
MAXIMUM MODULE	5' 6"
MINIMUM MODULE	6 1/2"
MAXIMUM HORIZONTAL PANEL SIZE	15' x 5'
MAXIMUM VERTICAL PANEL SIZE	5' x 15'
STANDARD PLANK SKIN THICKNESS	.020"
OPTIONAL PLANK SKIN THICKNESS	.032"
HORIZONTAL STANDARD REVEAL	1/2"
HORIZONTAL OPTIONAL REVEAL	1" - 6"
VERTICAL STANDARD REVEAL	1/2"
VERTICAL OPTIONAL REVEAL	5/8" - 6"
PANEL LENGTH MAX	15'
PANEL SYSTEM WEIGHT	<2 lbs. per sq. ft.
STANDARD VERTICAL JOINT MATERIAL	Spine
OPTIONAL VERTICAL JOINT MATERIAL	Gasket
STANDARD TEXTURE	Smooth
OPTIONAL TEXTURE	Embossed
CURVED APPLICATIONS	Contact CENTRIA
FINISHES	See CENTRIA Color Chart



02-26-2015

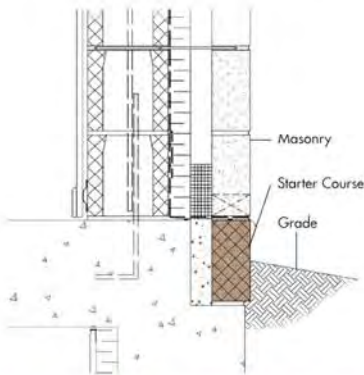


# BRIDGE PARK

DUBLIN, OH

Incorporate an **Adair® Limestone Starter Course**

Installing a starter course of Adair® dolomite will maintain the aesthetic integrity of the masonry. Its greater density and lower absorption is ideally suited to resist the conditions at grade.



Adair® limestone starter course



**Top Left:**  
4501 North Fairfax Office Complex  
Fairfax, VA  
WDG Architects  
Renaissance® Wheat Sandblasted

**Top Right:**  
Providence  
Palatine, IL  
Teraglia Architects  
Renaissance® White Sandblasted

**Left:**  
Saint Nektarios Southeast  
Greek Orthodox Parish, Inc.,  
Charlotte, NC  
One on One Design  
Renaissance® Custom Color Smooth and Rocked



**Below:**  
St. George 5th Court House  
St. George, UT  
VCRD Architecture  
Renaissance® Custom Color Cleft Rocked

**ARRISCRAFT STONE is used at building bases of C1 & C4**



### THE ARRISCRAFT ADVANTAGE:

- High strength, high density, and natural absorption translate into superior durability;
- Exceptionally tight dimensional tolerances;
- No cement or chemical additives; Renaissance® is not subject to the degree of shrinkage associated with cement-based products;
- Consistent color throughout the entire stone; Renaissance® can be cut, chiseled and dressed in the field while maintaining its color and texture.
- Arriscraft products can contribute to LEED® points and to sustainability in the LEED categories of Energy and Atmosphere, Materials and Resources, and Innovation in Design.
- Arriscraft offers an industry-unique Lifetime Product Warranty.

02-26-2015