

83 S. High St, Dublin Ohio 43017

Project Description:

The property was built in 1835. We have a photograph of the house take in the 1860's, at which time it had a covered porch facing S. High St. We would like to reconstruct a covered porch, using the original photograph as a guideline for design, construction and scale.

Documents included: Application

1. Site map
2. Photograph C1860
3. Current picture of the residence
4. Concrete patio dimensions in relation to pavement on S. High St.
5. Sketch - Street view of proposed porch (to scale)
6. Sketch - Side elevation (to scale)
7. Picture of existing covered porch at 138 S. High St. The elements are very similar to the former porch on 83. S. High St and in conjunction with the photograph taken in 1860 will be used as a guide for proposed porch
8. As above
9. Proposed porch post - cedar, 9ft purchased from Vintage Woodworks
10. Proposed bracket - Vintage Woodworks
11. Proposed spandrels - Vintage Woodworks
12. Proposed running trim - Vintage Woodworks
13. Proposed metal roofing (to match existing metal roofing) - Metal Roofing Wholesalers
14. Color Swatches - Sherwin Williams exterior acrylic paint (to match existing house colors)
15. List of neighbors

83 S High St, Dublin, OH

1.

Our Office

Your Property

Search

On-Line Tools

Reference

Contact Us

Summary

ParcelID: 273-000007-00
SEEL JULIE

Map-Rt: 273-N089 -035-00
83 S HIGH ST

Land Profile

Residential

Commercial

Improvements

Permits

Mapping

Sketch

Photo

Aerial Photos

Transfers

BOR Status

CAUV Status

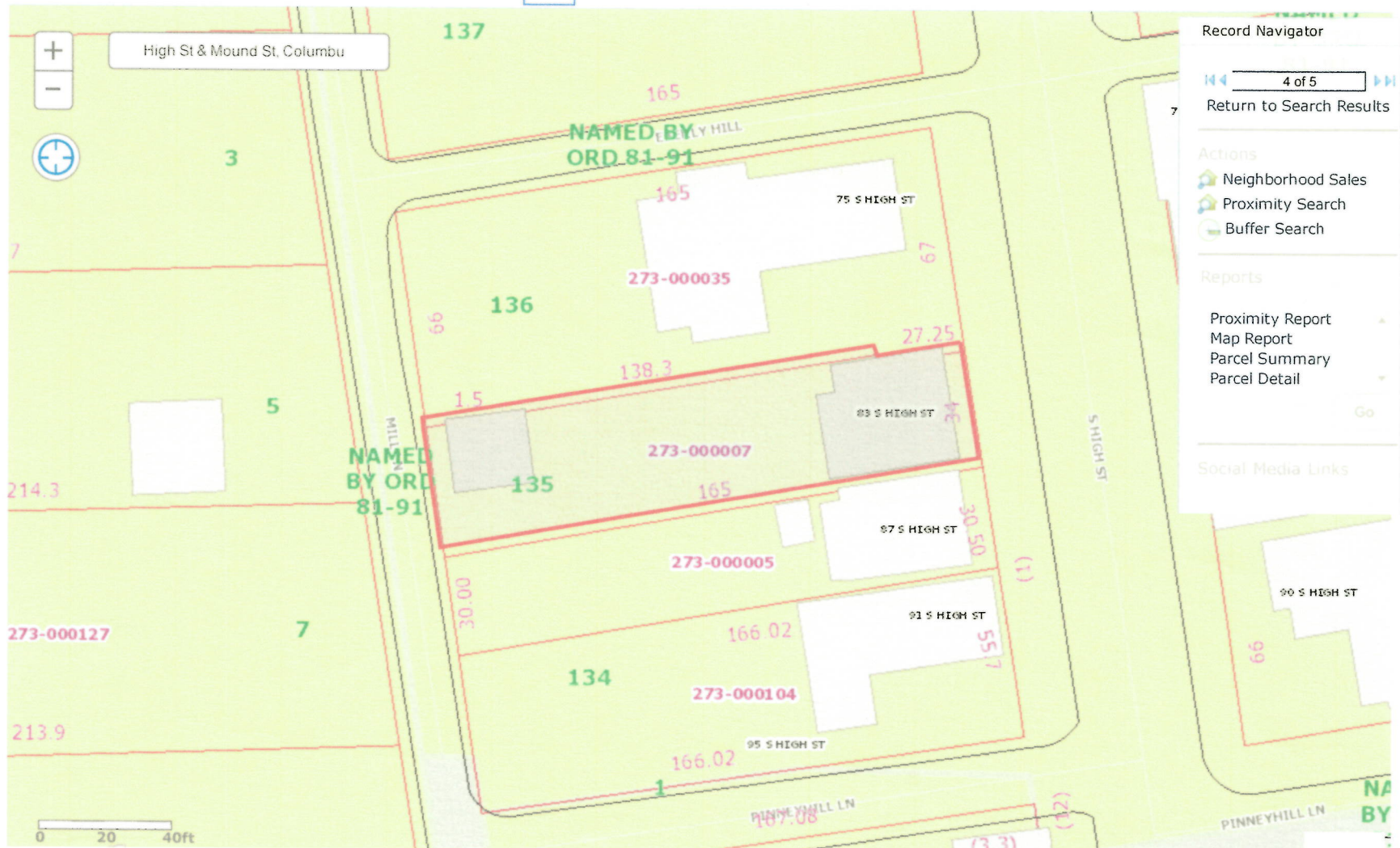
Tax & Payments

Tax Distribution

Value History

Rental Contact

Quick Links



Record Navigator

4 of 5

Return to Search Results

Actions

- Neighborhood Sales
- Proximity Search
- Buffer Search

Reports

- Proximity Report
- Map Report
- Parcel Summary
- Parcel Detail

Go

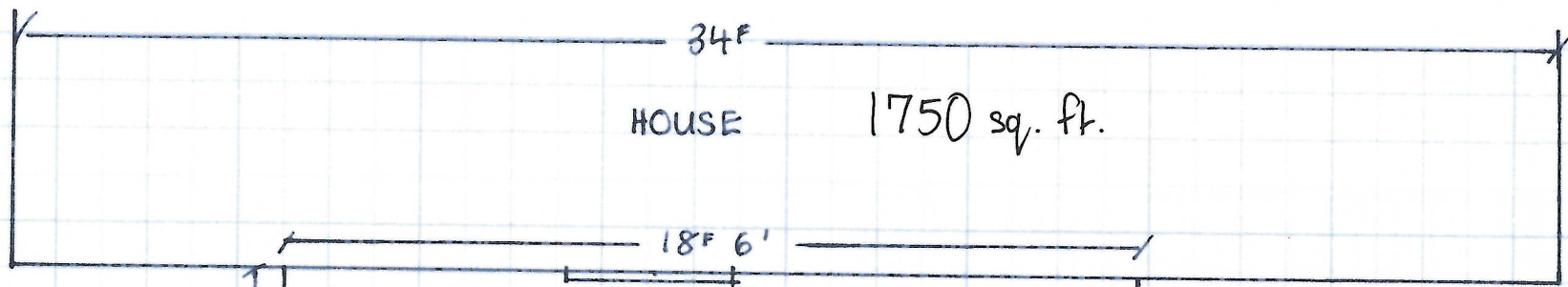
Social Media Links

83. S. High St. Dublin 2.
43017

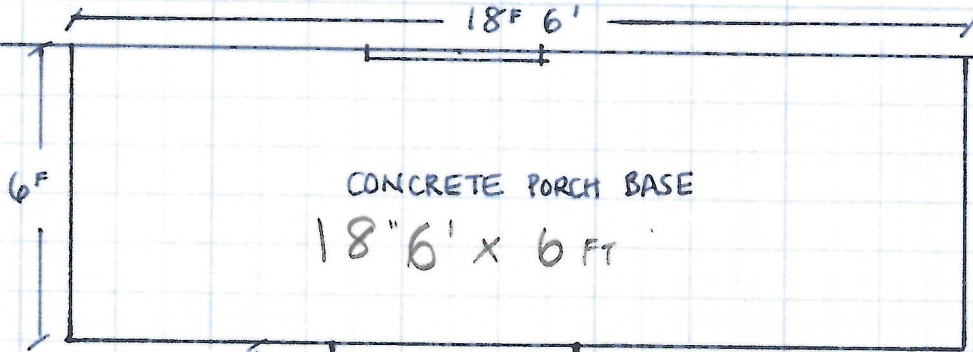


83. S. High St 3.
Dublin, Ohio 43017

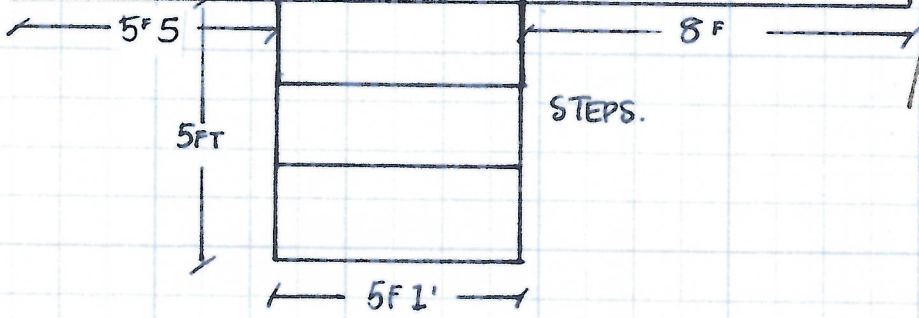




34F
HOUSE 1750 sq. ft.



CONCRETE PORCH BASE
18'6" x 6 FT



STEPS.

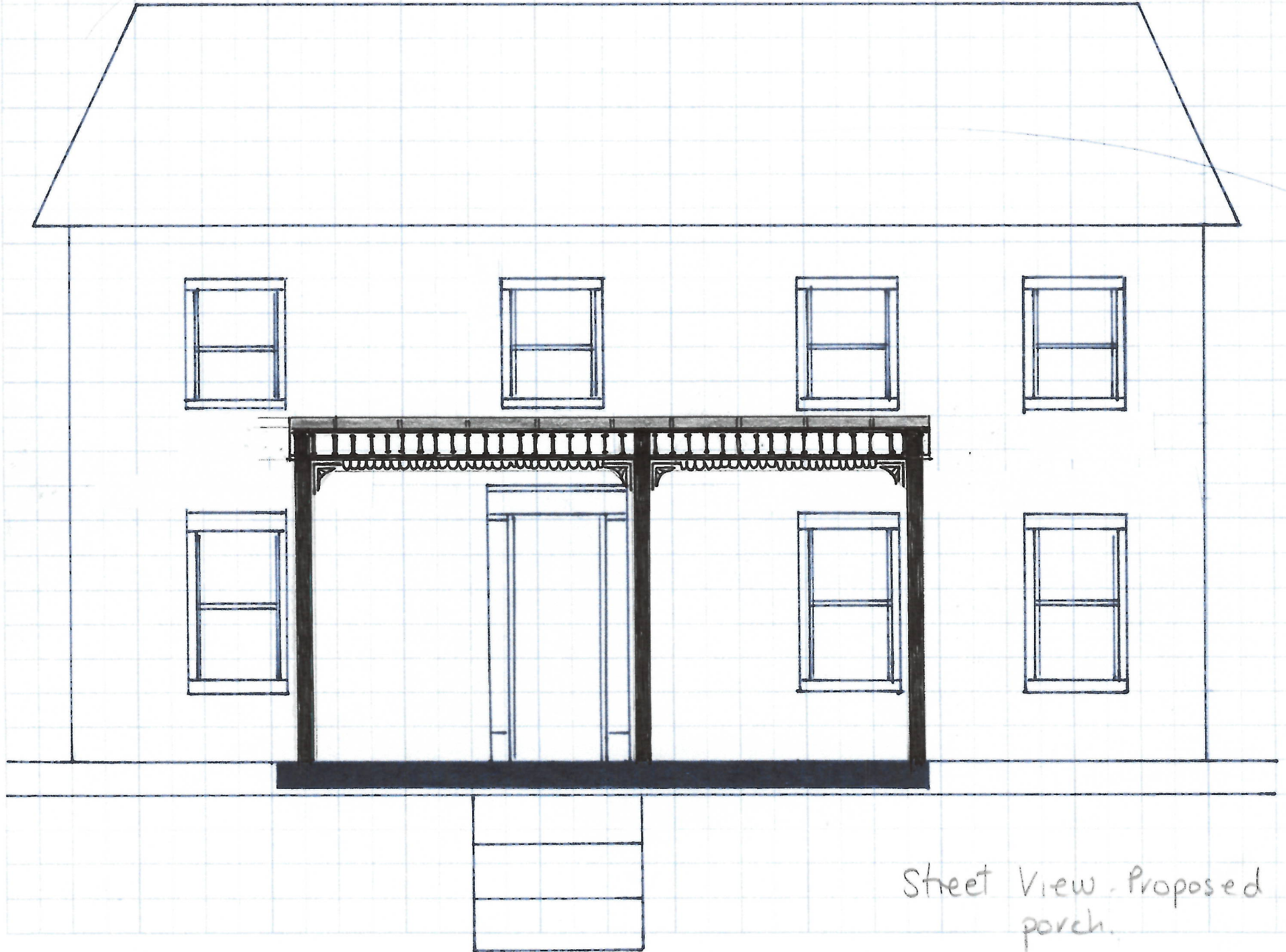
9 FT. to pavement.



PAVEMENT. S. HIGH ST.

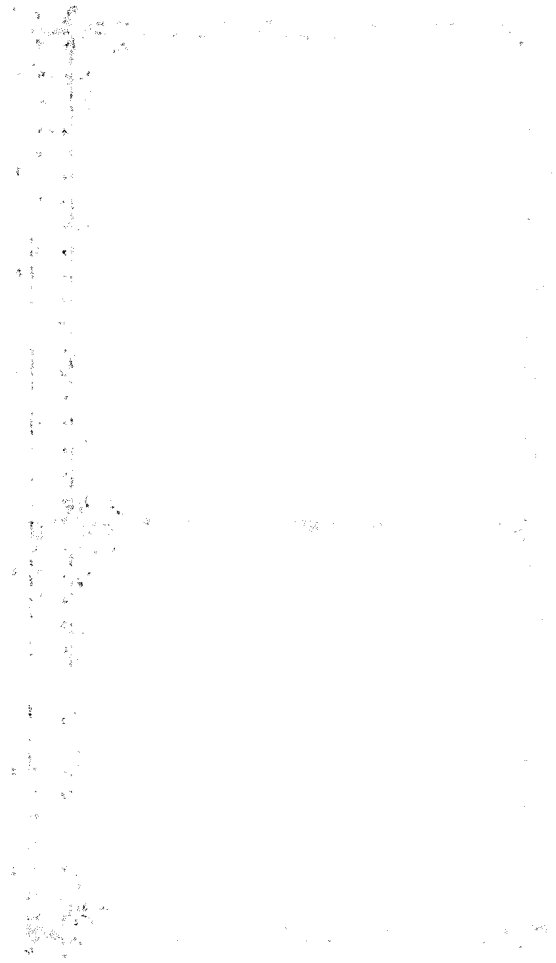
Existing: 83. S. High St. Dublin
1sq = 1ft.

83. S. High St. Dublin 5.

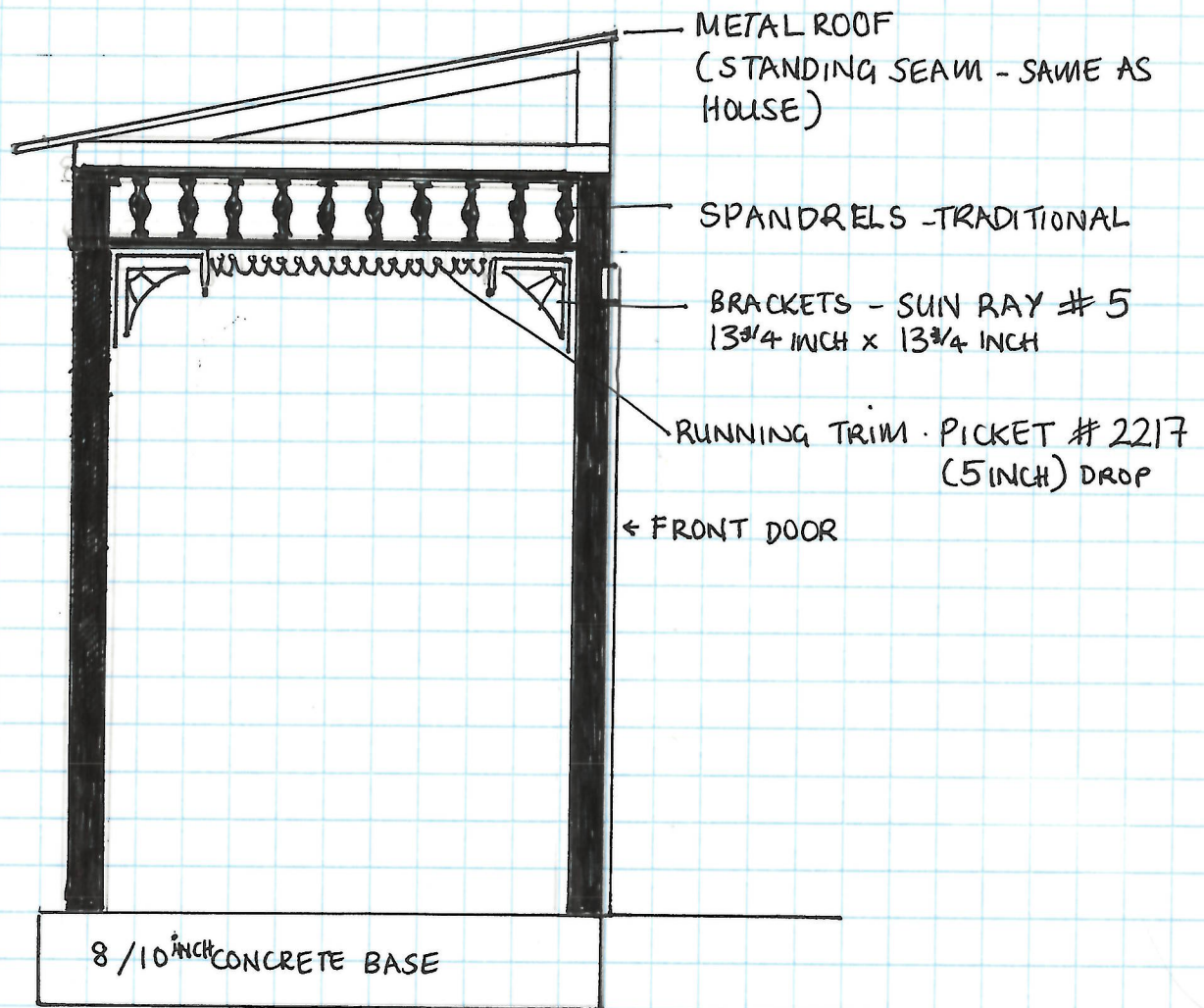


Street View - Proposed porch.

10



83. S. High St. Dublin 6



83. S. High St, Dublin

138 S. High 7.
(v. similar)



83. S. High St, Dublin

138. S. High St
(v. similar)

8.



16" apart 2x4 ced

2 - 2x6 beams
make frame
(cedar)

83 S High St. Dublin.

903-356-2158

9.

Search

PRODUCT CATEGORIES [Home](#) > [Products](#) > [Porch Posts](#) > [Standard Wood Porch Posts](#) > [Traditional Wood Porch Posts](#)

- [Appliques](#)
- [AZEK® Brand PVC](#)
- [Balusters \(Spindles\)](#)
- [Baseboards](#)
- [Beadboard & V-Groove](#)
- [Blocks, Corner/Base/Etc](#)
- [Brackets](#)
- [Caps, Door & Window](#)
- [Casings, Door & Window](#)
- [Ceiling Medallions](#)
- [Columns](#)
- [Corbels](#)
- [Corner Guards \(Beads\)](#)
- [Cornices](#)
- [Crown Mouldings](#)
- [Deck Boards, Etc](#)
- [Entry & Window Systems](#)
- [Finials & Drops](#)
- [Gable Decorations](#)



Traditional Wood Porch Posts # (caf)

[< Previous Page](#)

Turned from clear, kiln-dried Western softwoods such as Pine. Finger-jointed and edge-glued, with hollow centers on 5" and 6" sizes for better stability.

Options

- [Half Porch Posts](#) split lengthwise for use at walls
- [Base Mounting Blocks and Plates](#) help protect Posts from water damage.

Order Below ↓

[Installation Instructions.](#) Quantity discounts available.

Overall Length	Square Base	Turning	Square Top
96"	30"	40"	26"
96"	32"	40"	24"
96"	36"	40"	20"
96"	38"	40"	18"
96"	42"	40"	14"
108"	42"	40"	26"
120"	48"	40"	32"

4" size = 3-1/4" actual

5" size = 4-1/4" actual

6" size = 5-1/4" actual

- [Gallery Rails](#)
- [Handrails](#)
- [Headers](#)
- [Lamp Posts](#)
- [Mantels](#)
- [Mouldings](#)
- [Newel Posts](#)
- [Niches, Wall](#)
- [Panels/Medallions, Fretwork](#)
- [Pediments](#)
- [Pilasters](#)
- [Polyurethane Products](#)
- [Porches - START HERE!](#)
- [Porch Flooring](#)
- [Porch Posts](#)
- [Rails](#)
- [Roof Spires](#)
- [Running Trim](#)
- [Screen/Storm Doors](#)
- [Shingles, Cedar](#)
- [Shutters](#)
- [Signs](#)
- [Small Parts](#)
- [Spandrels](#)
- [Spindles \(and Balusters\)](#)
- [Stair Parts, Interior](#)
- [Sunburst Fans](#)

Important Shipping Info

ORDER HERE (Please select options to calculate Price)

Size & Base Length:

Add Base Mounting Block or Plate:

Price: \$187.42

Special Packaging: Required for safe shipment - \$5.00

Total Unit Price: \$192.42

Quantity: 1

Add to Cart

RELATED PAGES



[Info - Porch Posts](#)



[Wood Porch Post Installation](#)



[Installation Accessories](#)



[Post Face Appliques](#)



[Polyurethane Wood Core Newel Post](#)

Search

PRODUCT CATEGORIES

Home > Products > Brackets > Bracket Product Listings > Wood and PVC Brackets > Sun Ray Brackets > Sun Ray #5 Bracket

Appliques

AZEK® Brand PVC

Balusters (Spindles)

Baseboards

Beadboard & V-Groove

Blocks, Corner/Base/Etc

Brackets

Caps, Door & Window

Casings, Door & Window

Ceiling Medallions

Columns

Corbels

Corner Guards (Beads)

Cornices

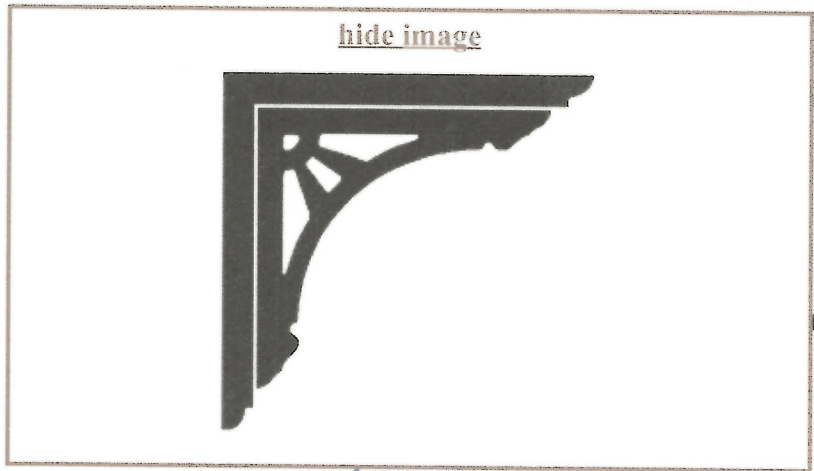
Crown Mouldings

Deck Boards, Etc

Entry & Window Systems

Finials & Drops

Gable Decorations



< Previous Page

10 3/4 inches

... first and are correct for 3/4" and 1" thick framed 1/2" thick Brackets, please add 1/2" to both width and

ORDER HERE (Please select options to calculate Price)

Size:

Material and Cutwork Thickness:

Framing:

Price: (displays after selecting options)

Quantity: 1

Add to Cart

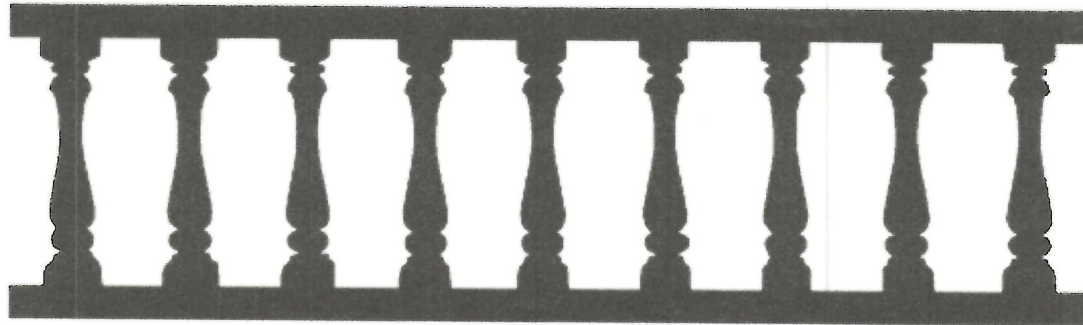
RELATED PAGES

83. S. High St. Dublin
43017



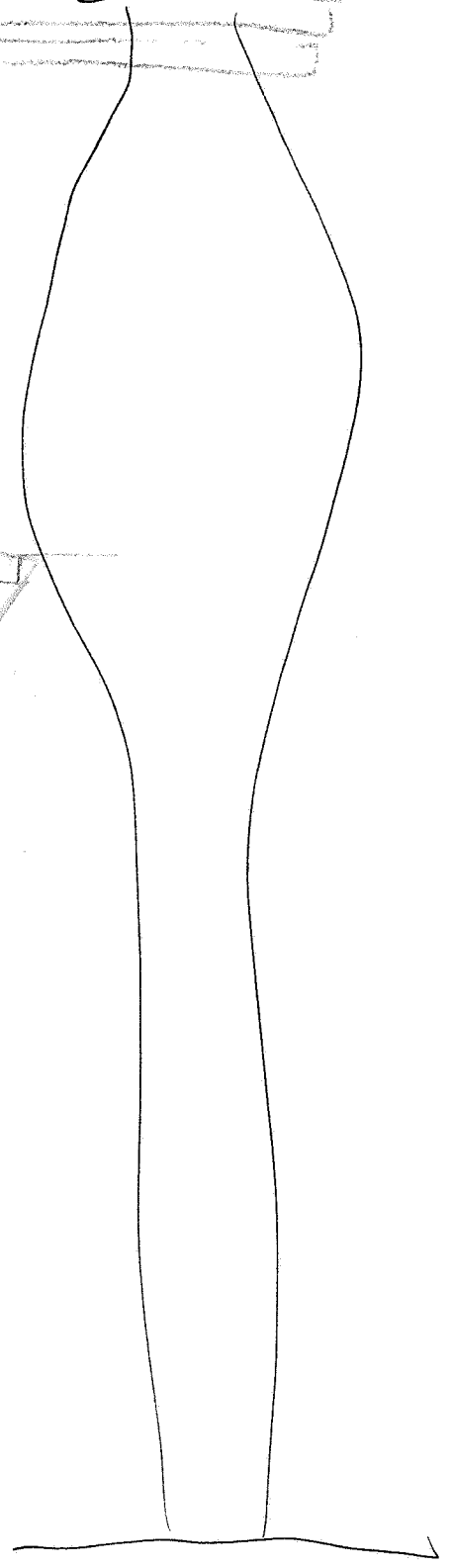
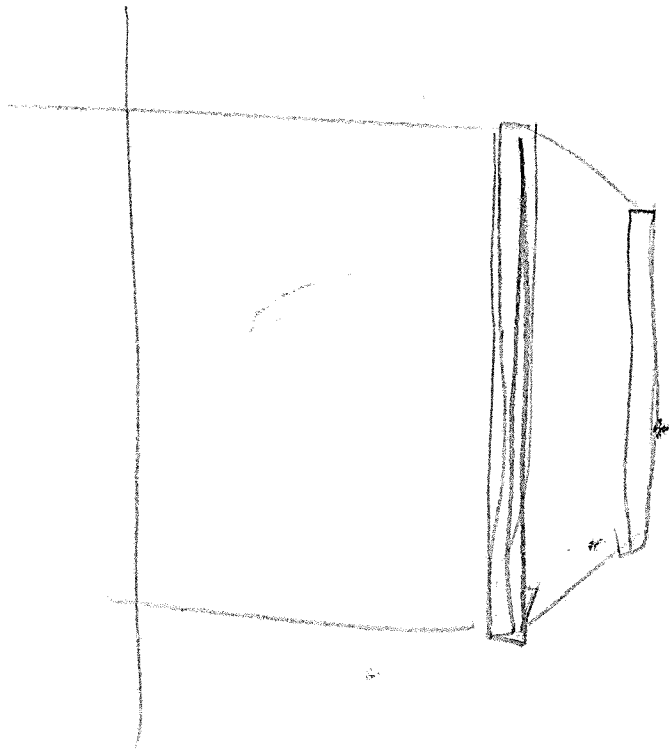
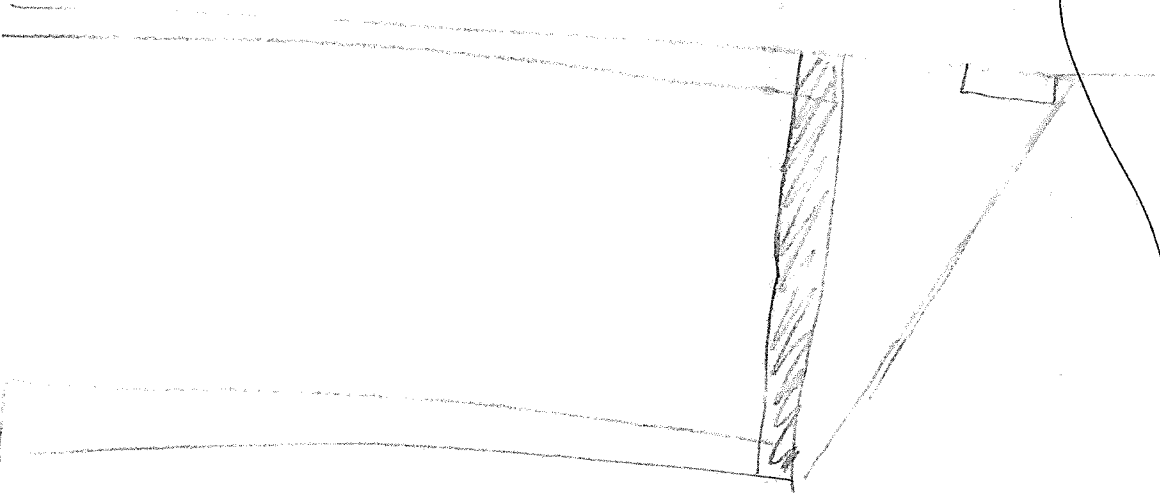
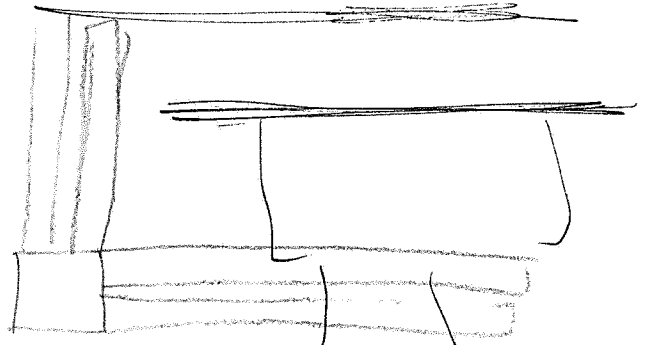
[Close this window](#)

10-3/4" Traditional Spandrel



[Close this window](#)

Ceiling Joists
Ledge wood 2x10



83. S High St. Dublin

903-356-2158

Search

PRODUCT CATEGORIES

Home > Products > Running Trim > Wood and PVC Running Trim > Running Trims, Pg 1

Appliques

AZEK® Brand PVC

Balusters (Spindles)

Baseboards

Beadboard & V-Groove

Blocks, Corner/Base/Etc

Brackets

Caps, Door & Window

Casings, Door & Window

Ceiling Medallions

Columns

Corbels

Corner Guards (Beads)

Cornices

Crown Mouldings

Deck Boards, Etc

Entry & Window Systems

Finials & Drops

Gable Decorations







Running Trims, Pg 1

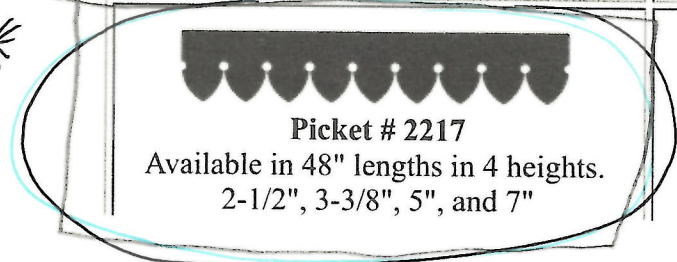
vww

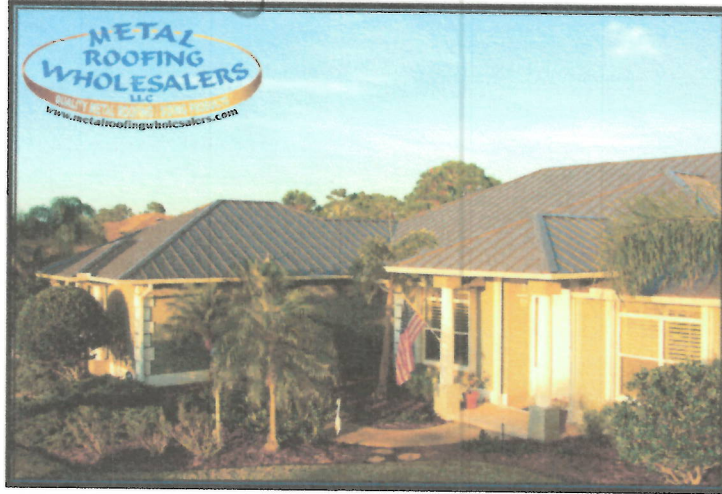
< Previous Page

The Running Trims on this page come in set lengths. Their patterns will repeat perfectly when 2 pieces are butted together, or you can trim to fit. Shorter sections are illustrated below.

Order Below ↓

 <p>Fleur # 2206 Available in 48" lengths in 4 heights. 2-1/2", 3-3/8", 5", and 7"</p>	 <p>Open Fleur # 2213 Available in 48" lengths in 4 heights. 2-1/2", 3-3/8", 5", and 7" See Usage Drawing.</p>
 <p>Pendant Fleur # 2211 1-1/4" thick x 5-1/4" height x 45" long (Please note special thickness and length) Order here</p>	 <p>Fleur Spandrel # 4173 7" tall x 48" long. Cut from a single board. See Usage Drawing as Bargeboard.</p>
 <p>Picket # 2217 Available in 48" lengths in 4 heights. 2-1/2", 3-3/8", 5", and 7"</p>	 <p>Arrow Head # 2225 Available in 48" lengths in 4 heights.</p>



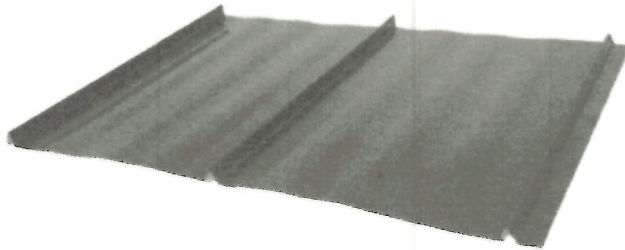


Standing Seam Image II

Our most popular standing seam roofing system, Image II Standing Seam is a hidden interlocking fastener system, hiding screws on both the panels and trim. The screws are fastened into a sidelap which is then hidden by the rib of the next panel. No clips are required, which saves time and money. we cutom cut these panels to the inch up to 40' long.

Specifications

- 16" wide coverage
- 1" high ribs spaced 16" apart
- Concealed fastened architectural panel
- Can be installed over decking/plywood
- Gauges: 26ga and 24ga
- Finishes: Baked on enamel Paint or bare Galvalume®
- Warranty: Painted - 40 years, Galvalume® - 25 years
- Minimum Recomend roof slope 3:12
- Energy Star® rated



Standing Seam Panel - 16" Wide Coverage



With Minor Ribs (not available at all plants - please ask)

Click Here to [View Color Chart](#) Click Here For [Install Guide](#) Click Here For [Panel Brochure](#)

[Click Here to Contact Us](#) For more info Or Pricing on Standing Seam Panels

83. S. High St. Dublin

14.



SW 2822
Downing Sand

DS



SW 2809
Rookwood Shutter Green

RSG



SW 2801
Rookwood Dark Red

RDR

