



POLICE DEPARTMENT

Annual Report

2016



Mission & Values

Dublin Division of Police employees are committed to protecting life, liberty and property. We will provide the highest level of service and work in partnership with our community to ensure public safety by focusing on the following core principles;

- Vigilant, Ethical and Impartial Enforcement of Law
- Critical Incident Preparedness and Response
- Crime Prevention, Reduction and Deterrence
- Improvement of Traffic Safety

We will remain dedicated to service and committed to excellence, focusing on the following core values: Professionalism, Integrity, Respect, Commitment

- **Professionalism:** We are members of an exceptional and highly trained law enforcement organization. Our conduct and demeanor adhere to the highest standards of personal and organizational excellence.
- **Integrity:** We hold ourselves accountable to the highest level of honesty, truthfulness, and ethical conduct.
- **Respect:** We ensure that all persons are treated with equality, dignity and courtesy.
- **Commitment:** We are dedicated to our Profession, our Community, our Agency and our Mission

Department Profile

Command Staff

The command staff for the Dublin Police Department consists of the Chief of Police and three bureau commanders. The agency is organized into three bureaus:

- Support Services Bureau • Operations Bureau • Technical Services Bureau

The Support Services bureau consists of the Detective Section, Community Impact Unit and Community Education Unit. The Operations Bureau consists of the Patrol Section which is broken down into three shifts providing seven day a week/24 hour a day patrol service to the community. The Technical Services Bureau includes our Communications, Training, Accreditation and Records Sections.

The department’s law enforcement planner provides analysis and reporting services, as well as functioning as the department’s crime analyst. Additionally, this position functions as the city’s emergency operations coordinator. He works closely with all other city and township departments to ensure the city is prepared to handle any type of emergency.

The accreditation manager is responsible for administering and supervising the department’s accreditation process. This position is also responsible for career development, training records, the agency’s temporary holding facility, police records and the property function.



Heinz von Eckartsberg
Chief of Police



Lieutenant Justin Paez
Operations Bureau



Lieutenant Steve Farmer
Support Services Bureau



Jay Somerville
Technical Services Bureau



Tom Hirschy
Law Enforcement Planner



Lynn Odenthal
Accreditation Manager

Focus & Results

Goal #1: Enhance our readiness and demonstrate our ability to effectively respond to and successfully resolve critical incidents, major crimes, and/or issues of significant community concern.

- 19.0% decrease in violent crimes from 2015
- 16.3% increase in all crimes from 2015

Goal #2: Reduce theft offenses throughout the city.

- 4.0% increase in theft offenses from 2015
- 4.4% decrease in thefts from vehicles from 2015
- 6.8% decrease in burglaries and B&Es from 2015

Goal #3: Improve overall traffic safety in the city.

- 1.5% increase in traffic crashes from 2015
- 12.6% decrease in injury traffic crashes from 2015
- 237.5% increase in OVI related traffic crashes from 2015

City Demographics & Police Operating Budget

The City of Dublin encompasses approximately 25 square miles with a residential population of 44,641. It is estimated however that Dublin’s population increases to approximately 70,000+ during daytime hours.

The 2016 operating budget for the police department was \$11,395,135.00. See below for more information:

2016 Operating Budget	Police
Personal Services	
Salaries/Wages	6,966,380.00
Overtime Wages	521,100.00
Employee Benefits	3,135,270.00
Uniform & Cloting	186,900.00
Other Expenses	
Conferences/Mileage	109,000.00
Meeting Expenses	8,500.00
Seminar Expenses	2,000.00
County Auditor Deduction	18,075.00
Communications	15,000.00
Other Professional Services	11,000.00
Maintenance of Equipment	87,600.00
Contractual Services	147,400.00
Memberships/Subscriptions	46,160.00
Office Supplies	20,000.00
Operating Supplies	88,750.00
DARE Program	5,500.00
Refunds	500.00
Capital Outlay	
Equipment & Furniture	26,000.00
Totals	11,395,135.00

Department Profile

Support Services Bureau

The **Community Education Unit** (CEU) operated successfully in 2016. Due to temporary staffing concerns across the Department, the CEU stepped up to cover many patrol shifts in order to reduce overtime and provide some relief for officers in the operations bureau. Adding Officer Burks in the fall afforded the unit the ability to once again provide SROs in each Middle School as well as provide APP, PDP, Stranger Danger and ALICE courses for the schools and the community. Capping off these presentations was the Active Threat video written and produced by the CEU in 2016.



The CEU presented the Drug Abuse Prevention Program to over 2500 students while providing various other educational programs as well. The unit continued its partnership with Maria's Message while partnering with WBNS channel 10 Television for presentations. The CEU also participated in the City of Dublin Town Hall meeting which addressed the growing heroin epidemic in Central Ohio. The unit provided 27 Active Shooter presentations to the City's corporate partners and the driving Simulators were deployed 20 times to various locations and events within the City. The CEU added a stranger danger presentation through a partnership with the Dublin Recreation Center. While this program was only presented 3 times in the fall of 2016 it was filled to capacity during each presentation.

The **Detective Bureau** saw the retirement of Detective Scott Davis and the addition of Detective Andrea Shull. Prior to her appointment Andrea had been assisting the Detective Bureau on a temporary basis conducting background investigations and working criminal cases. Andrea brought with her a significant amount of training which enabled her to assume a full case load immediately. Jake Williams has been appointed as the fifth detective and assumed this position in January. Detective Gilleland continues to participate in the FBI's Child Exploitation Task Force.

The bureau successfully cleared **44%** of the burglaries/B&Es in 2016. The clearance rate for thefts from vehicles was **39%**, while the overall clearance rate for cases was **34%**. The detectives continue to assist the CIU Investigators as well as each unit within the department to address crime concerns in the City.

In 2016 the **Community Impact Unit** Investigator Kyle Groves was named the newest member of the CIU and began his assignment in January. Additionally, on May 31, Investigator Joel Hall began his full-time assignment with the Delaware County Drug Task Force.

In 2016 the **Traffic Enforcement** officers were reduced from five to four with the elimination of the canine position. The four remaining officers made **1,454** traffic stops, issued **980** traffic citations and were assigned five (**5**) formal traffic complaints. These four officers effectively investigated **73** informal complaints, as well as all departmentally received school bus complaints (**34**). Additionally, traffic officers maintained presence in enforcement in **six** designated "maintenance zones" throughout the year. These included: Glick Road, Muirfield Drive (north of Brand Road), Shier Rings Road, Woerner-Temple Road, Rings Road (west of Avery Road), Summit view Road. Traffic officers were tasked throughout the year with additional assignments in support of CIU Investigators. These assignments included: plain clothes surveillance and operations, security for controlled purchases, warrant service, and search warrant execution and processing. Lastly, Officers Sterling and Brown were assigned for several months as background investigators in support of an officer new hire process.

The CIU **Investigators** engaged in proactive investigations using a combination of criminal intelligence, human and technical surveillance, undercover operations and standard investigative techniques. Investigators were assigned **24** Projects in 2016 of which **58%** resulted in successful clearance by arrest, charge, or Grand Jury summary submitted. It should be noted that three cases from 2016 remain open. With a full time member assigned to the Delaware County Drug Task force, investigators have had the opportunity to assist in a mutual aid capacity with surveillance operations, controlled purchases, and search warrant execution throughout the year. Additionally, investigators provided Hilliard PD with assistance on surveillance and search warrant execution multiple times during 2016.

During 2016, CIU began a few initiatives in order to provide enhanced protection and service to the City of Dublin. First, the unit began utilizing the Ohio State Highway Patrol's Aviation Unit for both targeted traffic enforcement (e.g., highway construction zones, State Route 161 and State Route 257 roundabout) and surveillance. Additionally, with assistance from detectives with the Franklin County H.O.P.E. Task Force and in collaboration with the Franklin County Prosecutor's Office, CIU investigators began investigation into non-fatal drug overdoses in hopes of combatting suppliers of illegal narcotics.



Department Profile

Operations Bureau

The Operations Bureau was led in 2016 by Bureau Commander Justin Paez, and consists of the Patrol Section, with support from the Department's Staff Assistant/Court Liaison, the Field Training Officer Program and our Community Service Officer Program.



Patrol Section

The Patrol Section is staffed with three (3) sergeants who command the three patrol shifts. Each sergeant is assisted by two (2) corporals. Current staffing (including supervisors) in the Patrol Section is 44; this included officers in training. Patrol shifts operate as follows:

First Shift: 7 am to 3 pm ▪ Second Shift: 3 pm to 11 pm ▪ Third Shift: 11 pm to 7 am

The Patrol Section is responsible for 24/7 uniformed service to the community. Minimum staffing standards for the section are determined based on workload and vary from five officers to eight. Officers assigned to Patrol operate in either one of the five identified Patrol Districts, or as a general response unit.

In 2016 the Patrol Section was responsible for the following activity:

Calls for Service:	47,301 (includes some officer initiated activity such as traffic stops)
Offense Reports:	1,207
Traffic Citations:	4,181
Traffic Crashes:	932

Field Training Officers

The Field Training Officer Program currently consists of 17 officers chosen by a selection process and have consistently demonstrated a professional and working knowledge of the law and agency procedures. The objective of the program is to produce highly trained positively motivated employees and provide equal and standardized training to all newly hired members. In the past year, these officers have trained 11 new employee's and have committed countless hours to developing them into well trained officers.

Community Service Officers

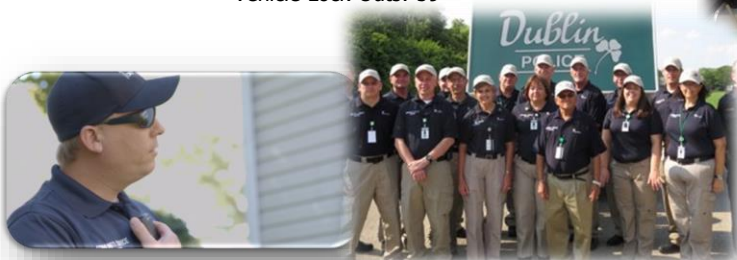
In 2016 the Community Service Officer (CSO) Program entered its fourth year serving the City of Dublin as a team of skilled volunteers. The mission of the CSO Program continues to be focused on serving as an example of community partnership by deploying a volunteer force that enhances the department's ability to achieve its goals. The Unit began the year with 15 members however three members resigned from the unit during the course of the year. All three members resigned due to health, time constraints or change in volunteer priorities. No new members were added this year due to budget constraints and unit size. The following information summarizes the unit's efforts to assist the Dublin Division of Police in achieving unit and divisional goals.

Volunteer Service Hours

Patrol Duties and Special
Events: 1,600

Patrol Activities

Vacation House Checks: 1,160
Business & Park Checks: 548
Crime Prevention Notices: 150
Vehicle Lock-Outs: 59



Department Profile

Technical Services Bureau

The Technical Services Bureau consists of Communications, Records, and the Department's Accreditation function. The bureau is led by Bureau Director Jay Somerville. In 2016 Communications Section completed its third full year operating as a consolidated communications center. The center, designated now as the Northwest Regional Emergency Communications Center (NRECC) provides 24-7 emergency dispatching services to the following entities:

- Dublin Police
- Hilliard Police
- Washington Township Fire
- Norwich Township Fire
- City of Dublin Public Services



In addition to the Bureau Commander, the Communications Section is comprised of an Operations Manager, three Communications Supervisors and 20 communications technician positions. In 2016, the Communications Technicians received 111,319 incoming telephone calls; 37,741 of those were 911 calls.

The department's Records Section maintains all police records in addition to providing clerical support for staff and reception duties.



Accreditation Manager Lynn Odenthal administers the agency's accreditation functions by maintaining all accreditation files and helping to coordinate all the reviews, analysis, reports and training functions necessary to meet all of the industry standards set by the Commission for the Accreditation of Law Enforcement Agencies (CALEA). She also supervises five employees in the Department's Records Section, Property Function and coordinates Training for the Department.

The Records Section is staffed by four employees; three employees handle all paperwork, records requests, special duty, training requests and citizen contacts via telephone and in person on a daily basis for the Department. The fourth employee is tasked with purchase order and accounts payable processing for the Department.

The Property Function, one employee, is responsible for intake, processing, storage, tracking and disposal of evidence and other property taken into the Department. Additionally, this employee coordinates disposal of the prescription drug drop box located in the lobby of the Justice Center as well as assisting with drug take back days coordinated in conjunction with SWACO.



- Prescription drug abuse causes the largest percentage of deaths from drug overdosing.
- Every day in the US, 2,500 youth (12 to 17) abuse a prescription pain reliever for the first time

- Two-thirds of teens who abuse prescription drugs did so before the age of 16.
- 14% of teens (about 1 in 7) in a recent study reported using prescription pain relievers not prescribed for them in the past year, and 9% (about 1 in 11) reported doing so in the past month
- In 2011, about 1.4 million emergency room visits involved the nonmedical use of pharmaceuticals. Among those ER visits, 501,207 visits were related to anti-anxiety and insomnia medications, and 420,040 visits were related to opioid analgesics.
- Of the 22,767 deaths relating to pharmaceutical overdose in 2013, 16,235 (71.3%) involved opioid analgesics (also called opioid pain relievers or prescription painkillers), and 6,973 (30.6%) involved benzodiazepines.8 (Some deaths include more than one type of drug.)
- The drug overdose death rate has more than doubled from 1999 through 2013.
- As many as 1 in every 5 teens in America say they have taken a prescription drug that was not prescribed for them.
- After marijuana and alcohol, prescription drugs are the most commonly abused substances by Americans age 14 and older.



2016 Operating Budget	Communications
Personal Services	
Salaries/Wages	1,502,400.00
Overtime Wages	75,000.00
Employee Benefits	630,665.00
Uniform & Cloting	10,000.00
Other Expenses	
Conferences/Mileage	18,000.00
Communications	2,000.00
Maintenance of Equipment	43,000.00
Memberships/Subscriptions	3,700.00
Office Supplies	4,000.00
Operating Supplies	1,000.00
Capital Outlay	
Equipment & Furniture	0.00
Totals	2,289,765.00



Rx Drug Drop Box

24/7 ACCESS

Dublin Justice Center Lobby
6565 Commerce Parkway
Dublin, Ohio 43017

SAFELY DISPOSE OF:
Unused or expired prescription pills & patches
Medication samples
Pet medications

Medications must be in a container
Do not bring needles, lancets, syringes, inhalers or liquids



Special Recognition

Honored for their 2016 Accomplishments



Officer Andrew Clark
Sworn Employee of the Year



Debbie Giddings
Volunteer of the Year



Communications Technician
Caitlynn Seymour
Civilian Employee of the Year

Certificate of Merit: Bureau Commander Jay Somerville, Officer Matthew Rahde, Officer Lore Griffith, Communications Supervisor Carolyn Fergus, Communications Supervisor Stephanie Skipworth, Communications Technician Paul Richmond, Communications Technician Barbi Conaway

Life Saving Awards: Corporal Tom Gallagher, Officer Phillip Hetzel, Officer Eric Cochrun

Chief's Award of Excellence: Corporals Tom Gallagher, William Morris, Chad Patrick, Paul Ricca, Officers Phillip Hetzel, Jake Williams, Jeremy Miller, Eric Cochrun, Mike Laws, Andrew Clark, Steve Borton, Justin Chapplelear, Jace Dalgord, Bryan McClain, Investigators Dave Jaeger, Kyle Groves, Joel Hall, Detective Andrea Shull; Communications Technician Paul Richmond

Award of Merit: Corporals Tom Gallagher, Paul Ricca, Officers David Gatterdam, Stoll, Byers, Detective Chuck Rudy, Investigators Kyle Groves, Joel Hall, David Jaeger, Officer Scott Brown

Leadership Award: Sergeant Greg Lattanzi

Exceptional Attendance Award: Bureau Commander Jay Somerville, Sergeants Nick Tabernik, Tim Hosterman, Greg Lattanzi, Corporals Tom Gallagher, William Morris, Officers Steve Borton, Justin Chapplelear, Eric Cochrun, Jace Dalgord, David Gatterdam, Lore Griffith, Kyle Groves, Bryan McClain, Joseph Popson, Jacob Stoll, Jacob Williams, Communications Technicians Christopher Burkhardt, Benjamin Karns, Caitlynn Seymour

Special Recognition:

Ohio CIT Officer of the Year – Officer Paul Burks
Master Level SRO – Officer Bruce McKenna
Recruiting – Lindsay Weisenauer

Military Service Award – Officer David Traves



2017 Service Awards: **5 Years** – Officer Scott Brown, Officer Rigoberto Quintanilla; **10 Years** – Officer Joel Hall, Communications Technician Kristopher Harris; **15 Years** – Communications Supervisor – Carolyn Fergus

2017 Longevity Awards: **20 Years** – Lieutenant Steve Farmer, Sergeant Tim Hosterman, Corporal Kevin Keiffer, Officer Dan Beam, Officer Steve Krumm, Officer Lore Griffith; **25 Years** – Bureau Commander Jay Somerville, Communications Technician Paul Richmond, Communications Technician Mike Pineault, Property Technician JoAnn Muether

Personnel Highlights & Staffing

New Additions

Tiffany Myers, Communications Technician 1/4/2016
 Noah Harris, Communications Technician 1/5/2016
 Jennifer Cain, Communications Technician 1/6/2016
 Meghan Kniola, Administrative Support II 4/4/2016
 Matthew Rahde, Police Officer 6/8/2016
 Blake Andrews, Police Officer 6/16/2016
 Daniel Craft, Police Officer 6/16/2016
 David Traves, Police Officer 6/20/2016
 Jalisha Anderson, Communications Technician 9/12/2016
 Steven Watsford, Communications Technician 9/13/2016
 Nathan Hysell, Police Officer 12/15/2016
 Nickolas Bottoms, Police Officer 12/15/2016
 Katherine Fox, Police Officer 12/15/2016

Selections & Promotions

Stephanie Skipworth - Promoted to Communications Supervisor - 2/22/2016
 Paul Burks, School Resource Officer – Selected 8/1/2016
 Andrea Shull, Detective – Selected 10/3/2016

Retirements & Resignations

Kristen Kougendakis, Police Officer – Resigned 2/16/2016
 Jeffrey Hall, Police Officer – Retired 3/16/2016
 Noah Harris, Communication Technician - Resigned 4/18/2016
 Stephen Alloway, Police Officer – Resigned 5/3/2016
 Kevin Miller, Police Officer – Retired 5/16/2016
 Michael Dunson, Police Officer – Retired 5/31/2016
 Scott Davis, Detective – Retired 7/29/2016
 Dillon Williams, Police Officer – Resigned 10/12/2016
 Christopher Fown, Police Officer – Resigned 10/24/2016

Staffing Levels:	Authorized/Actual
Chief of Police	1/1
Police Lieutenant	2/2
Civilian Bureau Commander	1/1
Police Sergeant	6/6
Police Corporal	6/6
Police Officer	**55/53
Law Enforcement Planner	1/1
Accreditation Manager	1/1
Administrative Support III	1/1
Administrative Assistant/CL	1/1
Administrative Support II	4/4
Police Property Technician	1/1
Communications Technician	20/19*
Communications Supervisor	3/3
Communications Manager	1/1
Totals	**104/101*

*below authorized staffing level

**authorized by council to hire two over authorized in anticipation of pending retirements



[click to view](#)



Analytical Review

Investigations , Complaints and Grievances	Sworn Personnel	Civilian Personnel	Findings (click for more details)
Internal Investigations	0	0	No Internal Investigations
Formal Complaints	9	0	1 Unfounded 2 Improper Conduct 2 Proper Conduct 4 Insufficient Evidence
Informal Complaints	3	3	3 Unfounded 1 Improper Conduct 2 Proper Conduct
Grievances	1	1	1 Denied Step 3 1 Resolved Step 1
Use of Force Incidents	5	0	N/A
Use of Force Reports	9	0	N/A

Agency Activity 2016

Calls for Service

Total Calls for Service = 47,301

Total Citizen Initiated Calls = 18,545

911 Calls Received = 37,741

Average Response Time: 7 minutes

Average Total Time to Handle Calls: 38 minutes



Other Reported Activity

Total Offenses Reported = 1,207

Total Citations = 4,181

Number of Adults Arrested = 636

Adult Arrest Charges = 914

Number of Juveniles Arrested = 117

Juvenile Arrest Charges = 151

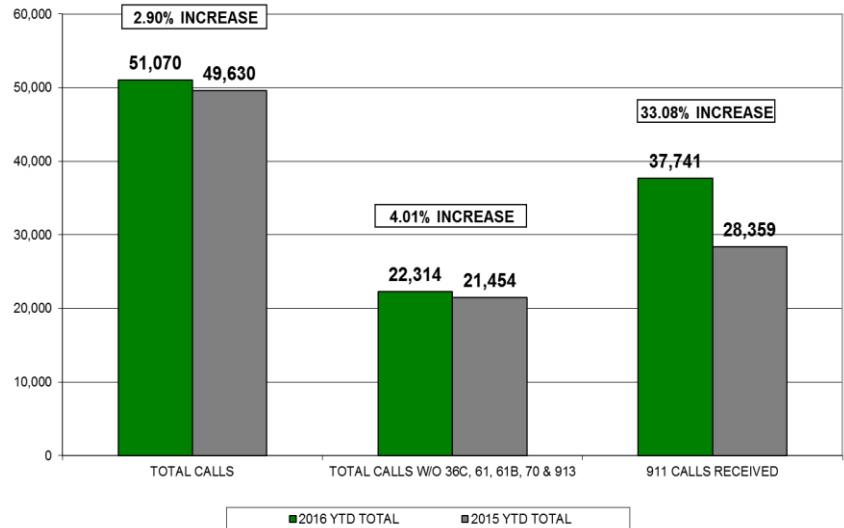
Total Accidents Reported = 932



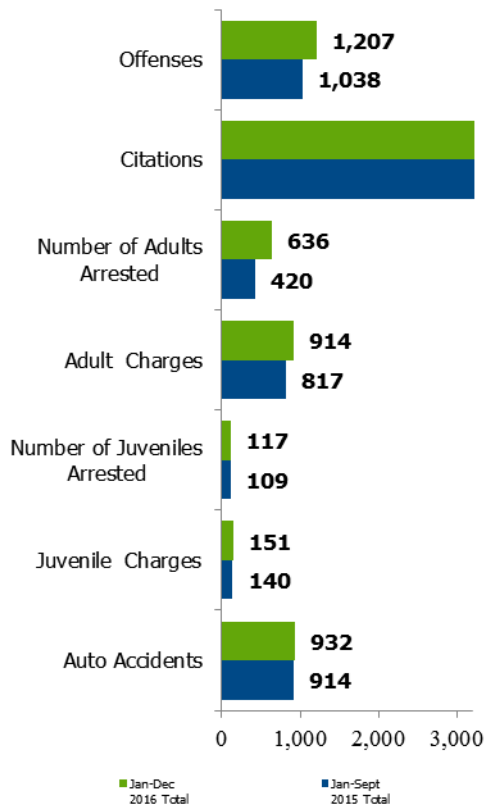
click to view

CALLS FOR SERVICE

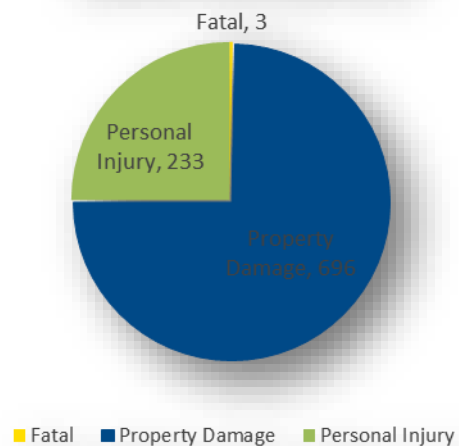
JANUARY 1, 2016 - DECEMBER 31, 2016



January - December 2016 vs 2015



Auto Accidents



#whyidontdrivedistracted

Agency Quarterly Activity 2016

October - December Calls for Service

Total Calls for Service = 10,809

Total Citizen Initiated Calls = 4,334

911 Calls Received = 8,925

Average Response Time: 7 minutes

Average Total Time to Handle Calls: 38 minutes



Other Reported Activity

Total Offenses Reported = 293

Total Citations = 989

Number of Adults Arrested = 152

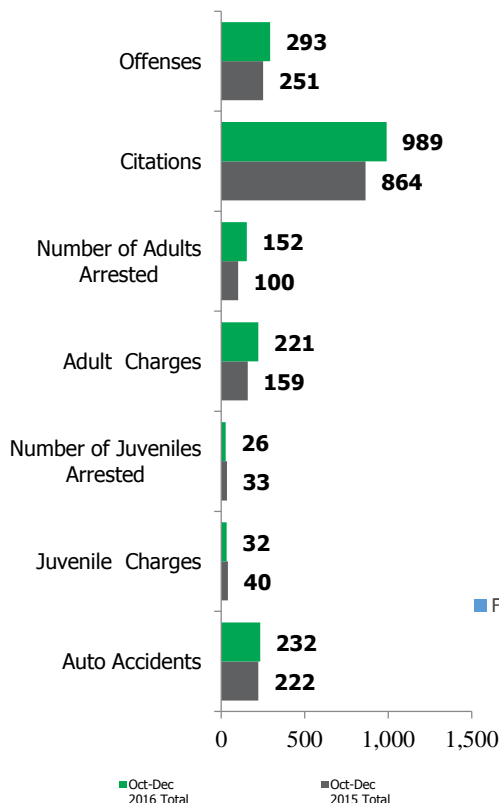
Adult Arrest Charges = 221

Number of Juveniles Arrested = 26

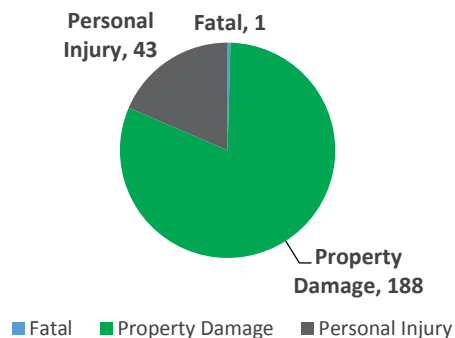
Juvenile Arrest Charges = 32

Total Accidents Reported = 232

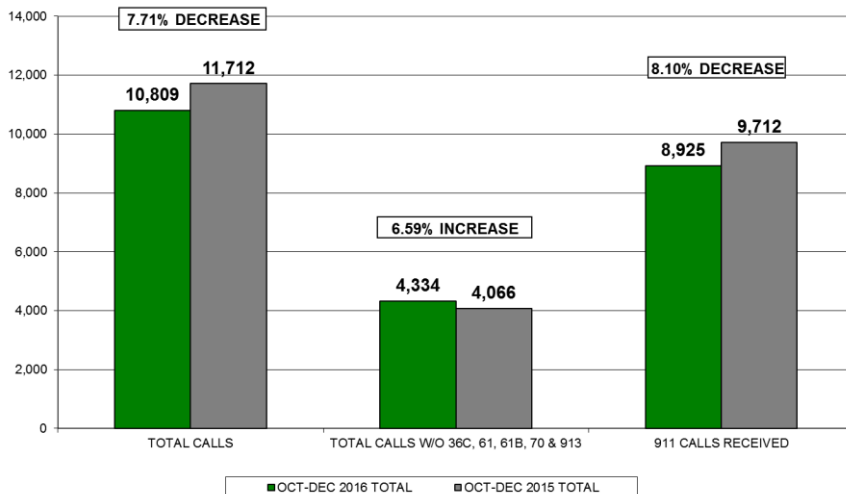
October - December 2016 vs 2015



Auto Accidents

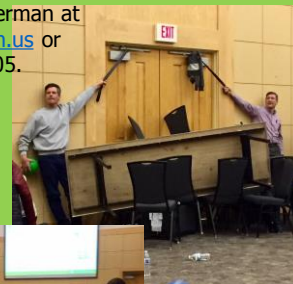


CALLS FOR SERVICE OCTOBER 1, 2016 - DECEMBER 31, 2016



DID YOU KNOW ?

If you would like Active Shooter Training for your business or facility, you can contact Sgt. Tim Hosterman at thosterman@dublin.oh.us or by calling 614.410.4805.



Active Shooter Situations

It can happen anywhere – the movie theater or grocery store, at work or school. Active shooter incidents are unpredictable and evolve quickly. While it is unlikely that you will ever be involved in an active shooter incident, your chances for survival are best if you are prepared for the worst.

<http://dublinohiousa.gov/dublin-police/active-shooter-situations/>

Other helpful links:

<http://www.dhs.gov/active-shooter-preparedness>

<https://www.fbi.gov/about-us/office-of-partner-engagement/active-shooter-incidents>

<http://www.alicetraining.com/alice-101/faq/>

Internal Affairs Investigations

In 2016, zero (0) internal affairs investigations were conducted by our agency. Compared to 2015, there was one (1) internal affairs investigation conducted by our agency.

Analysis and Conclusions:

Due to the fact there were no investigations in 2016 a review could not be conducted to identify a pattern of employee or type of misconduct.

Internal Affairs Investigations by Employee Status:

January – December 2016

Sworn: 0 Civilian: 0

Complaints

In 2016 there were nine (9) formal complaints and six (6) informal complaints filed against personnel of the police department. The circumstances surrounding the formal complaints were as follows: 1) interview of juvenile without parental consent; 2) cruiser operation-speed and racial bias; 3) timeliness of report submission; 4) racial profiling; 5) pointing firearm; 6) pointing firearm; 7) pointing firearm; 8) pointing firearm; and 9) demeanor. Five of the nine complaints (four pointing firearms and one demeanor) were out of one singular incident. Thorough investigations were conducted into each complaint. The results of the complaints were as follows: 1) proper conduct; 2) improper conduct reference cruiser operation – employee received counseling; no evidence of racial bias; 3) proper conduct; 4) unfounded complaint; 5) insufficient evidence; 6) insufficient evidence; 7) insufficient evidence; 8) insufficient evidence; and 9) improper conduct – employee received counseling.

Complaints by Employee Status:

Formal Complaints

January – December 2016

Sworn: 9 Civilian: 0

Informal Complaints

January – December 2016

Sworn: 3 Civilian: 3

The circumstances surrounding the formal complaints were as follows: 1) dispatch protocol; 2) unprofessional demeanor; 3) handling of call for service; 4) handling of call for service; 5) handling of traffic stop; and 6) handling of traffic stop. Two of the six complaints (handling of call for service) were out of one singular incident. Thorough investigations were conducted into each complaint. The results of the informal complaints were as follows: 1) improper conduct – employee received an oral reprimand; 2) unfounded complaint; 3) proper conduct; 4) proper conduct; 5) unfounded complaint; and 6) unfounded complaint. Compared to 2015, there were five (5) formal complaints and five (5) informal complaints filed involving personnel of the police department.

Analysis and Conclusions:

A review of complaints both formal and informal for 2016 indicated one (1) employee named on two separate occasions. The circumstances surrounding these complaints were not similar; one concluded with proper conduct; the second unfounded. No other identifiable patterns of employee or misconduct was identified in 2016. In comparison to 2015 formal and informal complaints, there was one (1) employee named who received complaints in both 2015 and 2016. The nature of the 2015 complaint was not similar to those occurring in 2016 and was closed with a resolution of unfounded. Comparison of all other complaints did not indicate an identifiable pattern of employee or misconduct.

Grievances

In 2016 there were two (2) grievances filed by employees. The first was filed due to denial of holiday pay. The grievance was not sustained and is closed. The second grievance was filed due to a denied overtime opportunity. A resolution to the grievance was accepted by the employee and closed. In 2015 there were two (2) grievances filed by employees. The first grievance was filed due to denial of health insurance. The grievance was resolved. The second grievance was filed due to denied use of personal leave. This grievance was withdrawn by the employee.

Grievances by Employee Status:

January – December 2015

Sworn: 2 Civilian: 0

Analysis and Conclusions:

A review of the grievances did not indicate an identifiable pattern of employee or type of grievance. Additionally, when compared to 2015 there was no pattern of employee or type of grievance.

Use of Force

Use of force reports are used to document bodily force by means of a defensive tactic or technique or any other bodily force to overcome resistive tension. Minor hand to hand control techniques, such as handcuffing, physically touching, or gripping to overcome minor resistive tension, shall be reported on an incident report or narrative of the arrest form. Use of force reports are also used to document the use of a less lethal and/or lethal weapon (in the course of a use of force). Any bodily force, use of a less lethal weapon, or use of a lethal weapon resulting in an injury must be reported on a use of force report.

Use of Force Incidents

Use of Force	2014	2015	2016
Use of Force Incidents	10	5	9
Use of Force Reports	23	9	17

In 2016, nine (9) use of force incidents occurred that resulted in seventeen (17) use of force reports being filed. It should be noted that in some years, more reports were filed than total number of incidents due to more than one officer using force out of a single incident in some, but not all cases. The number of use of force incidents has fluctuated slightly over the past three years.

Injuries Resulting from Use of Force (based on incidents)

Use of Force Injuries	2014	2015	2016
Officer Injured	2	1	0
Suspect Injured	6	3	4

In 2016, there were no use of force incidents that resulted in an injury to an officer. In 2016, four (4) use of force incidents resulted in injuries to suspects. A review of the injuries indicated that the injuries were generally minor in nature. It should be noted that in some cases, these injuries could have been sustained by the suspect prior to the contact with the officer(s). Over the past three years, the number of incidents where the officer and/or the suspect was injured has been generally low.

Reasons for the Use of Force (Incidents)

Reasons for Use of Force	2014	2015	2016
Necessary to Effect Arrest	7	2	7
Necessary to Defend Officer	5	1	4
Other	0	3	3

In 2016, the most common reasons for the use of force were: 1) Necessary to Effect an Arrest, 2) Necessary to Defend Officer, and 3) Other. Over the past three years, "Necessary to Effect Arrest" was the most common reason for use of force in 2014 and 2016. In some cases, the numbers may not match up due to some reports having more than one description for the suspect or none being marked on the report.

Officer's Response – Use of Force Incidents

Officer's Response	2014	2015	2016
Firearm/Other Deadly Force	0	0	3*
Baton/Flashlight Techniques	0	0	0
Kicking/Striking Structural Area	0	1	0
Kicking/Striking Motor Point Areas	2	0	0
Chemical Agent (O.C.)	0	0	0
Taser	5	2	2
Baton Restraints	0	0	0
Takedowns	5	1	5
Joint Manipulation	5	0	2
Balance Displacement	1	3	2
Escort Position	1	2	3
Assistance from Other Officers	8	4	7
Verbal or Physical Commands	9	5	9
Officer Presence	9	5	9

*All Three (3) Firearm were pointing only (in combination with bodily use of force).

In 2016, the most common officer responses to use of force incidents included: 1) Officer Presence, 2) Verbal or Physical Commands, 3) Assistance from Other Officers, and 4) Takedowns. Officer Presence, Verbal or Physical Commands, Assistance from Other Officers, and Takedowns have been in the top four officer's responses to use of force incidents in 2014 and 2016. In some cases, the numbers may not match up due to some reports having more than one officer response or none being marked on the report.

Use of Force Conclusion

In reviewing the seventeen (17) use of force reports out of the nine (9) use of force incidents that occurred in 2016, it was clear that all policies regarding the use of force were followed. All nine (9) use of force incidents were correctly reported, investigated, and reviewed by the chain of command. All use of force incidents were classified as force reasonable and consistent with policy. It appeared that the level of suspect resistance actions has fluctuated over the past three years. 2016 use of force more mirrored 2014 use of force. This information should be noted by the defensive tactics training staff for future training cycles. Use of force training was conducted with all sworn personnel in 2016 as part of the police department's annual mandatory training cycle. Based on this analysis, use of force training will continue to be a part of the police department's annual mandatory in-service training for sworn personnel. Based on this analysis of use of force, no patterns or trends were identified that would require any further training needs or policy modifications.

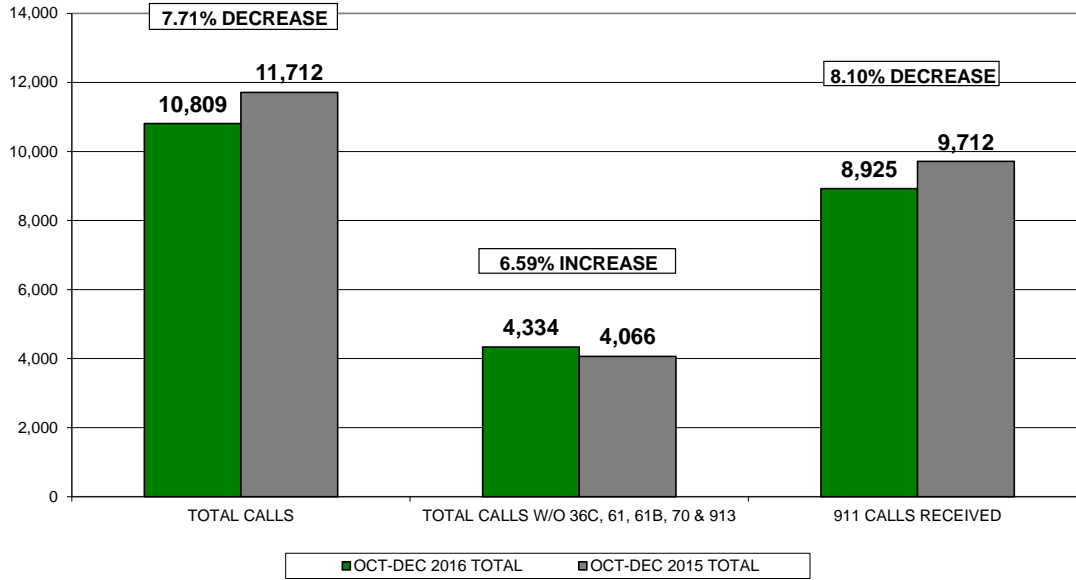
**CALLS FOR SERVICE SUMMARY
OCTOBER - DECEMBER 2016**

CODE# & DESCRIPTION	DISTRICTS					DISTRICT 0 MUTUAL AID OUTSIDE	OCT-DEC 2016 TOTAL	2016 YTD TOTAL	vs.	OCT-DEC 2015 TOTAL	2015 YTD TOTAL
	001	002	003	004	005						
10-ASSIST OTHER AGENCY	7	2	5	9	12	68	103	373		43	309
100-BOMB THREAT	0	0	0	0	0	0	0	0		1	2
100D-BOMB DEVICE	0	0	1	0	0	0	1	1		0	0
102-NARCOTICS	9	10	5	10	2	0	36	108		40	110
12-BURGLARY	1	8	4	4	2	0	19	112		27	121
12AL BURGLAR ALARM	112	112	113	83	108	0	528	2,081		506	2,278
12B-OPEN DOOR OR WINDOW	1	4	9	10	6	0	30	113		32	134
13-MISCELLANEOUS CALL	39	39	31	129	40	27	305	1,156		226	869
13B-BANK ESCORT	5	0	0	0	0	0	5	10		1	6
13T-PRISONER TRANSPORT	0	0	0	2	0	6	8	39		2	31
14-FRAUD BAD CHECK	13	12	22	20	13	0	80	323		47	311
15-WARRANT SERVICE	4	5	5	19	2	16	51	227		32	160
16-DECEASED PERSON	1	1	1	0	0	0	3	25		6	27
16A-DECEASED ANIMAL	0	3	6	0	0	0	9	51		15	47
18-ANIMAL BITE	1	0	2	0	0	0	3	18		1	9
18A-ANIMAL COMPLAINT	4	8	13	13	6	1	45	292		57	285
18B-BARKING DOG	0	1	3	1	2	0	7	28		13	57
2-ACCIDENT NON INJURY	44	100	16	50	80	9	299	1,094		255	1,021
20-DOMESTIC VIOLENCE	4	6	11	11	1	0	33	102		24	101
24-INTOXICATED PERSON	1	8	0	5	2	0	16	114		15	108
24A -OMVI	7	20	7	17	16	20	87	369		76	313
26-FIGHT	1	1	0	1	0	0	3	13		8	23
28-FIRE RUN	2	2	1	3	4	0	12	58		16	66
29-EMS RUN	4	6	3	15	4	0	32	155		32	136
2A-HIT SKIP NON INJURY	11	14	8	25	12	2	72	268		53	226
2P-ACCIDENT PRIVATE PROPERTY	12	9	0	20	3	0	44	216		50	210
30-VICE COMPLAINT	0	0	0	0	0	0	0	5		1	7
34-JUVENILE COMPLAINT	5	9	14	20	3	0	51	251		44	246
36-THEFT	29	59	19	45	25	1	178	725		161	729
36B-FOUND PROPERTY	6	9	2	29	5	0	51	261		59	254
36C-COURTESY CARD	202	242	8	96	173	2	723	3,967		1,326	5,310
38-MISSING PERSON	1	1	1	4	1	2	10	54		9	60
38A-MISSING PERSON RETURNED	0	1	0	3	0	0	4	14		1	6
4-ACCIDENT INJURIES	5	19	4	6	14	2	50	260		74	285
40-PERSON WITH A GUN	1	0	0	0	0	0	1	10		4	15
40A-PERSON WITH A KNIFE	0	1	0	0	0	0	1	4		1	5
42-UNKNOWN CIRCUMSTANCES	3	1	0	1	2	0	7	29		5	19
42-UNKNOWN EMERGENCY	0	0	1	0	0	0	1	7		2	5
42A-911 HANG UP CALL	44	14	9	22	12	14	115	467		105	429
44-OFFICER IN TROUBLE	0	0	0	0	0	0	0	0		0	2
46-PROWLER	1	0	1	0	1	0	3	8		0	5
48-RAPE	0	0	1	1	0	0	2	9		0	6
48B-SEX OFFENSE	3	1	0	1	1	0	6	30		5	29
4A-HIT SKIP INJURY	0	0	1	0	0	0	1	9		4	5
4F-ACCIDENT FATAL	0	0	1	0	0	0	1	3		0	2
4P-ACCIDENT PRIV PROP INJURY	0	1	0	0	0	0	1	7		4	17
50-ROBBERY	0	0	0	1	0	0	1	8		2	11
50ALB-ROBBERY ALARM BUSINESS	3	9	1	5	4	0	22	94		17	93
50ALR-ROBBERY ALARM RESIDENCE	3	3	15	3	4	0	28	116		35	95
52-SHOOTING	0	0	0	0	0	0	0	1		0	1
52A-SHOTS FIRED	0	2	2	4	1	1	10	45		11	42
54-STABBING	0	0	0	0	0	0	0	0		0	3
56-STOLEN VEHICLE	0	0	0	2	0	1	3	34		8	39
56B-RECOVERED STOLEN VEHICLE	1	2	0	1	1	3	8	30		2	13
58-SUICIDE	0	0	2	0	0	0	2	7		0	3
58A-SUICIDE ATTEMPT	4	3	1	3	2	0	13	98		11	62
6-AIRCRAFT CRASH	0	0	0	0	0	0	0	1		0	0
60-SUSPICIOUS PERSON	65	88	98	137	68	5	461	1,948		471	1,657
60A-SUSPICIOUS VEHICLE	19	44	25	34	22	1	145	883		192	724
61-HOUSE CHECK	28	64	169	88	98	14	461	2,553		741	2,983
61A-EXTRA PATROL	13	12	22	31	20	0	98	409		83	444
61B-TARGET PATROL	36	112	72	136	117	3	476	2,691		901	3,130
62-TRAFFIC DETAIL	3	7	3	1	2	0	16	62		14	90
64-VANDALISM	4	7	10	9	4	0	34	205		64	250
70-TRAFFIC VIOLATOR	482	222	177	314	537	185	1,917	7,423		1,462	5,450
72-SPEEDER OR RECKLESS DRIVER	12	39	12	26	77	35	201	899		175	788
74-DISABLED OR MOTORIST ASSIST	33	43	13	29	93	12	223	840		204	945
76-VEHICLE BLOCKING	27	21	7	37	35	4	131	532		102	520
76A-PARKING VIOLATOR	8	7	16	38	12	0	81	438		79	455
78-VEHICLE LOCKOUT	40	21	9	43	22	2	137	592		127	634
8-ASSAULT	0	1	1	5	0	0	7	45		10	43
80-ROADWAY OBSTRUCTION	14	19	5	10	37	2	87	399		96	388
8A-MENACING THREATS	4	2	1	5	2	0	14	66		22	54
8B-TELEPHONE HARASSMENT	3	1	2	4	1	0	11	55		15	79
90-DISTURBANCE 2 UNITS	24	33	28	54	25	0	164	595		132	519
90A-DISTURBANCE 1 UNIT	11	24	22	35	9	1	102	551		115	501
90S-SMOKING VIOLATION	0	0	0	0	0	0	0	1		0	0
913-FOOT PATROL	420	735	199	887	495	162	2,898	12,122		3,216	11,303
96-MENTAL	4	4	7	5	1	0	21	92		22	88

CALLS FOR SERVICE SUMMARY
OCTOBER - DECEMBER 2016

CODE# & DESCRIPTION	DISTRICTS					DISTRICT 0 MUTUAL AID OUTSIDE	OCT-DEC 2016 TOTAL	2016 YTD TOTAL	VS.	OCT-DEC 2015 TOTAL	2015 YTD TOTAL
	001	002	003	004	005						
TOTAL CALLS	1,844	2,254	1,247	2,622	2,241	601	10,809	47,301		11,712	45,803
TOTAL CALLS W/O 36C, 61, 61B, 70 & 913	676	879	622	1,101	821	235	4,334	18,545		4,066	17,627
911 CALLS RECEIVED							8,925	37,741		9,712	28,359

CALLS FOR SERVICE
OCTOBER 1, 2016 - DECEMBER 31, 2016



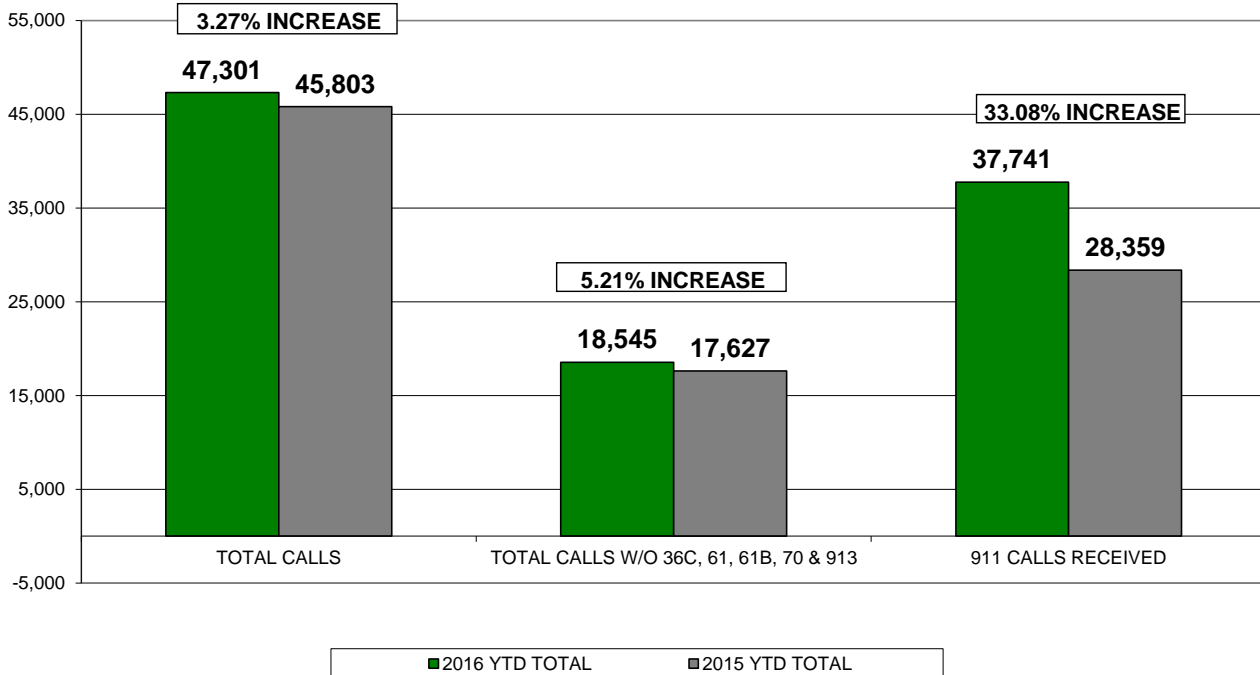
CALLS FOR SERVICE SUMMARY
JANUARY 1 - DECEMBER 31, 2016

CODE# & DESCRIPTION	DISTRICTS					DISTRICT 0	2016 YTD TOTAL	VS.	2015 YTD TOTAL
	001	002	003	004	005	MUTUAL AID OUTSIDE CITY			
10-ASSIST OTHER AGENCY	35	40	21	49	45	183	373		309
100-BOMB THREAT	0	0	0	0	0	0	0		2
100D-BOMB DEVICE	0	0	1	0	0	0	1		0
102-NARCOTICS	23	20	18	30	15	2	108		110
12-BURGLARY	12	29	16	40	15	0	112		121
12AL BURGLAR ALARM	394	404	479	402	400	2	2,081		2,278
12B-OPEN DOOR OR WINDOW	11	19	30	40	13	0	113		134
13-MISCELLANEOUS CALL	135	129	113	533	133	113	1,156		869
13B-BANK ESCORT	7	1	0	2	0	0	10		6
13T-PRISONER TRANSPORT	0	0	0	8	0	31	39		31
14-FRAUD BAD CHECK	47	49	84	86	57	0	323		311
15-WARRANT SERVICE	13	22	8	96	11	77	227		160
16-DECEASED PERSON	1	6	6	6	5	1	25		27
16A-DECEASED ANIMAL	2	16	21	10	2	0	51		47
18-ANIMAL BITE	3	3	4	6	2	0	18		9
18A-ANIMAL COMPLAINT	29	67	61	88	44	3	292		285
18B-BARKING DOG	4	4	5	9	6	0	28		57
2-ACCIDENT NON INJURY	171	328	78	160	326	31	1,094		1,021
20-DOMESTIC VIOLENCE	13	16	22	38	12	1	102		101
24-INTOXICATED PERSON	15	31	9	48	8	3	114		108
24A -OMVI	41	82	18	61	91	76	369		313
26-FIGHT	4	3	0	3	3	0	13		23
28-FIRE RUN	12	11	14	10	9	2	58		66
29-EMS RUN	29	29	17	57	20	3	155		136
2A-HIT SKIP NON INJURY	55	64	18	70	58	3	268		226
2P-ACCIDENT PRIVATE PROPERTY	59	44	9	89	14	1	216		210
30-VICE COMPLAINT	1	0	0	3	1	0	5		7
34-JUVENILE COMPLAINT	36	28	51	107	27	2	251		246
36-THEFT	155	232	74	176	85	3	725		729
36B-FOUND PROPERTY	33	33	27	138	24	6	261		254
36C-COURTESY CARD	1,184	1,121	125	580	948	9	3,967		5,310
38-MISSING PERSON	2	10	12	23	4	3	54		60
38A-MISSING PERSON RETURNED	1	2	4	6	0	1	14		6
4-ACCIDENT INJURIES	32	73	17	43	90	5	260		285
40-PERSON WITH A GUN	3	1	1	0	4	1	10		15
40A-PERSON WITH A KNIFE	0	2	1	1	0	0	4		5
42-UNKNOWN CIRCUMSTANCES	10	2	2	8	6	1	29		19
42-UNKNOWN EMERGENCY	0	3	1	3	0	0	7		5
42A-911 HANG UP CALL	126	60	46	112	78	45	467		429
44-OFFICER IN TROUBLE	0	0	0	0	0	0	0		2
46-PROWLER	3	0	1	2	2	0	8		5
48-RAPE	0	0	3	6	0	0	9		6
48B-SEX OFFENSE	5	1	2	16	5	1	30		29
4A-HIT SKIP INJURY	3	1	2	2	1	0	9		5
4F-ACCIDENT FATAL	0	1	1	0	1	0	3		2
4P-ACCIDENT PRIV PROP INJURY	1	3	0	2	1	0	7		17
50-ROBBERY	3	1	0	3	0	1	8		11
50ALB-ROBBERY ALARM BUSINESS	30	30	2	22	8	2	94		93
50ALR-ROBBERY ALARM RESIDENCE	5	9	58	29	13	2	116		95
52-SHOOTING	0	0	0	0	1	0	1		1
52A-SHOTS FIRED	1	9	9	14	11	1	45		42
54-STABBING	0	0	0	0	0	0	0		3
56-STOLEN VEHICLE	5	18	2	5	3	1	34		39
56B-RECOVERED STOLEN VEHICLE	5	8	0	10	3	4	30		13
58-SUICIDE	2	0	3	0	2	0	7		3
58A-SUICIDE ATTEMPT	14	19	16	37	9	3	98		62
6-AIRCRAFT CRASH	0	0	0	0	1	0	1		0
60-SUSPICIOUS PERSON	310	399	313	601	305	20	1,948		1,657
60A-SUSPICIOUS VEHICLE	116	276	112	198	178	3	883		724
61-HOUSE CHECK	249	276	919	617	470	22	2,553		2,983
61A-EXTRA PATROL	62	63	74	134	75	1	409		444
61B-TARGET PATROL	382	613	198	949	525	24	2,691		3,130
62-TRAFFIC DETAIL	21	12	5	11	13	0	62		90

CALLS FOR SERVICE SUMMARY
JANUARY 1 - DECEMBER 31, 2016

CODE# & DESCRIPTION	DISTRICTS					DISTRICT 0	2016 YTD TOTAL	VS.	2015 YTD TOTAL
	001	002	003	004	005	MUTUAL AID OUTSIDE CITY			
64-VANDALISM	18	32	51	83	21	0	205		250
70-TRAFFIC VIOLATOR	1,687	923	540	1,533	2,196	544	7,423		5,450
72-SPEEDER OR RECKLESS DRIVER	53	194	64	111	346	131	899		788
74-DISABLED OR MOTORIST ASSIST	130	151	36	107	372	44	840		945
76-VEHICLE BLOCKING	78	112	31	142	154	15	532		520
76A-PARKING VIOLATOR	71	52	96	141	77	1	438		455
78-VEHICLE LOCKOUT	159	99	42	189	97	6	592		634
8-ASSAULT	8	10	4	20	3	0	45		43
80-ROADWAY OBSTRUCTION	71	92	22	42	166	6	399		388
8A-MENACING THREATS	17	13	8	20	6	2	66		54
8B-TELEPHONE HARASSMENT	11	4	12	20	8	0	55		79
90-DISTURBANCE 2 UNITS	94	125	88	191	91	6	595		519
90A-DISTURBANCE 1 UNIT	83	94	115	187	65	7	551		501
90S-SMOKING VIOLATION	0	0	0	1	0	0	1		0
913-FOOT PATROL	1,935	2,818	841	3,914	2,156	458	12,122		11,303
96-MENTAL	23	18	17	25	9	0	92		88
TOTAL CALLS	8,353	9,460	5,100	12,525	9,950	1,913	47,301		45,803
TOTAL CALLS W/O 36C, 61, 61B, 70 & 913	2,916	3,709	2,477	4,932	3,655	856	18,545		17,627
911 CALLS RECEIVED							37,741		28,359

CALLS FOR SERVICE
JANUARY 1, 2016 - DECEMBER 31, 2016



OFFENSE REPORT SUMMARY

GROUP A	DEPARTMENT CLASSIFICATION	IBR CODE	OCT-DEC 2016	2016 YTD	VS	OCT-DEC 2015	2015 YTD
	AGGRAVATED ASSAULT	13A	1	8		1	9
	ARSON	200	1	2		0	81
	BURGLARY/BREAKING AND ENTERING	220	17	97		22	22
	COUNTERFEITING/FORGERY	250	6	11		4	13
	CREDIT CARD/AUTOMATIC TELLER MACHINE FRAUD	26B	1	8		3	6
	DISTRUCTION/DAMAGE/VANDALISM OF PROPERTY	290	16	55		18	78
	DRUG EQUIPMENT VIOLATIONS	35B	14	49		10	26
	DRUG/NARCOTIC VIOLATIONS	35A	29	122		23	58
	EXTORTION/BLACKMAIL	210	0	0		1	2
	FALSE PRETENSES/SWINDLE/CONFIDENCE GAME	26A	3	19		1	5
	FORCIBLE FONDLING	11D	3	10		1	6
	FORCIBLE RAPE	11A	2	12		1	6
	IMPERSONATION	26C	4	53		12	65
	INTIMIDATION	13C	8	27		7	14
	KIDNAPPING/ABDUCTION	100	1	1		1	2
	MOTOR VEHICLE THEFT	240	1	15		3	14
	PORNOGRAPHY/OBSCENE MATERIAL	370	0	1		0	2
	ROBBERY	120	1	5		2	9
	SIMPLE ASSAULT	13B	25	83		21	71
	STOLEN PROPERTY OFFENSES	280	3	10		1	6
	THEFT - ALL OTHER LARCENY	23H	47	180		43	196
	THEFT - FROM COIN OPERATED MACHINE	23E	0	1		0	0
	THEFT - POCKET PICKING	23A	0	0		1	1
	THEFT - PURSE SNATCHING	23B	0	1		0	1
	THEFT - SHOPLIFTING	23C	8	28		7	32
	THEFT - THEFT FROM BUILDING	23D	7	32		2	17
	THEFT - THEFT FROM MOTOR VEHICLE	23F	47	156		36	145
	THEFT - THEFT OF VEHICLE PARTS OR ACCESSORIES	23G	3	16		2	12
	WEAPON LAW VIOLATIONS	520	3	6		1	7
	WIRE FRAUD	26E	0	2		0	0
	TOTAL GROUP A		251	1,010		224	906

B	DEPARTMENT CLASSIFICATION	IBR CODE	OCT-DEC 2016	2016 YTD	VS	OCT-DEC 2015	2015 YTD
	BAD CHECKS	90A	2	8		0	4
	CURFEW/LOITERING/VAGRANCY VIOLATIONS	90B	1	12		3	15
	DISORDERLY CONDUCT	90C	3	23		7	30
	DRIVING UNDER THE INFLUENCE	90D	20	81		1	2
	LIQUOR LAW VIOLATIONS	90G	6	34		6	31
	RUNAWAY	90I	0	3		0	1
	TRESPASS OF REAL PROPERTY	90J	2	5		1	3
	ALL OTHER OFFENSES	90Z	8	31		9	46
	TOTAL GROUP B		42	197		27	132

TOTAL OFFENSES REPORTED

293

1,207

251

1,038

TRAFFIC ENFORCEMENT SUMMARY

NUMBER OF CITATIONS ISSUED	OCT-DEC 2016 TOTAL	2016 YTD	VS	OCT-DEC 2015 TOTAL	2015 YTD
TOTAL	852	3,610		769	3,080

TRAFFIC CHARGES

TYPE OF CITATION	OCT-DEC 2016 TOTAL	2016 YTD	VS	OCT-DEC 2015 TOTAL	2015 YTD
ACDA	60	316		74	273
ALLOW UNAUTH. PERSON	0	0		0	1
ASSURED CLEAR DISTANCE, SPEED/ACDA	15	49		0	13
CHILD RESTRAINT SYSTEM, EXCEPTIONS	1	3		1	5
CHILD SUPPORT (SUS)	0	2		0	1
COMPLIANCE WITH LAWFUL ORDER OF POLICE OFFICER; FLEEING	0	4		0	0
CROSSING ROADWAY OUTSIDE OF CROSSWALK	0	0		1	1
DISPLAY LICENSE/VALIDATION	2	10		1	6
DISPLAY OF LICENSE PLATES	67	356		69	266
DIVIDED ROADWAYS	2	3		0	0
DRIVER LICENSE SUSPENDED	4	15		3	9
DRIVING ON BERM	0	0		1	1
DRIVING ON CLOSED ROADWAY	1	1		0	2
DRIVING ON RIGHT HALF OF ROADWAY	0	2		0	0
DRIVING SIDEWALK/LAWN	0	1		0	1
DRIVING THRU SAFETY ZONE	0	0		1	3
DRIVING TO LEFT OF CENTER LINE	0	1		2	3
DRIVING UNDER SUSPENSION OR VIOLATION OF LICENSE RESTRICTION	0	1		1	1
DRIVING UNSAFE VEHICLE	0	0		1	7
DRIVING UPON DIVIDED ROADWAYS	2	3		1	5
DRIVING WHILE UNDER THE INFLUENCE OF ALCOHOL/ DRUGS	32	107		22	81
DRIVING WHILE UNDER THE INFLUENCE OF ALCOHOL/ DRUGS JUVENILE	0	0		0	4
DRIVING WITH TEMP PERMIT W/O LICENSED DRIVER	2	5		0	1
DRIVING WITHIN MARKED LANES	8	60		13	53
DRIVING WITHOUT TEMP PERMIT	0	3		2	5
DUS - 12 POINT SUSPENSION	0	6		0	0
DUS - FRA	33	119		18	62
DUS - OVI COURT SUSPENSION	3	12		2	8
DUS - OVI SUSPENSION	6	18		3	8
DUS NON COMPLIANCE SUSPENSION	1	9		0	0
DUS OR VIOLATION OF LICENSE RESTRICTION	17	89		19	68
DUS- FAIL TO REINSTATE	1	14		1	5
DUS/REVOCATION	0	0		0	5
EXP REGISTRATION	3	8		0	8
FAILURE TO REGISTER	0	9		0	2
FAIL TO CONTROL	8	26		3	11
FAIL TO CONTROL; WEAVING,FULL TIME ATT. SEND/READ/WRT TXT ME	0	1		0	2
FAIL TO STOP AT RED LIGHT	17	73		13	51
FAIL TO YIELD/STOP SIGN	0	0		0	1
FAIL TO YIELD-PRIVATE DRIVE	3	11		4	29
FAILURE TO COMPLY	0	1		0	0
FAILURE TO COMPLY WITH ORDER OR SIGNAL OF P.O. - ELUDE OR F	1	1		0	0
FAILURE TO CONTROL	35	117		23	79
FAILURE TO REGISTER	1	11		7	11
FAILURE TO REINSTATE OL	10	40		0	9
FAILURE TO YIELD RIGHT OF WAY	0	1		0	2
FAULTY EXHAUST SYSTEM	0	1		0	0
FICTIOUS PLATES	1	6		0	2
FLASHING RED LIGHT	3	11		1	1
FOLL. EMERG/PUB. VEH. PROH. STATION/PUBLIC VEH/CAUTION	0	1		0	1
FOLLOW/PARK TOO CLOSE TO EMERGENCY VEH.	0	3		0	1
FOLLOWING TOO CLOSELY	1	2		0	1
FTY - EMERGENCY VEHICLE	0	1		0	1
FTY - STOPPED CRUISER	0	11		0	1
FTY - TURNING LEFT	17	62		6	28
HAZARDOUS OR NO PASSING ZONES	0	1		0	1
HEADLIGHT ILLUMINATION REQUIREMENTS	0	2		1	3
HIT/SKIP - CODE 2/4	7	15		3	15
HIT/SKIP - CODE 2P/4P	1	6		0	5
HIT/SKIP PRIVATE PROPERTY	0	1		0	0
IMPROPER BACKING AND STARTING	0	0		0	1
IMPROPER TURN - PRIVATE DRIVE, ALLEY	0	1		0	0
IMPROPER TURNS AT INTERSECTION	0	4		2	2
INATTENTION	2	17		6	31

TRAFFIC ENFORCEMENT SUMMARY

NUMBER OF CITATIONS ISSUED	OCT-DEC 2016 TOTAL	2016 YTD	VS	OCT-DEC 2015 TOTAL	2015 YTD
TOTAL	852	3,610		769	3,080

TRAFFIC CHARGES

TYPE OF CITATION	OCT-DEC 2016 TOTAL	2016 YTD	VS	OCT-DEC 2015 TOTAL	2015 YTD
JUNK VEHICLE	0	1		0	0
JUVENILE TRAFFIC OFFENDER	2	6		2	2
LANE CHANGE - UNSAFE	21	64		15	43
LEAVING THE SCENE OF AN ACCIDENT	1	5		0	1
LEFT OF CENTER	1	2		0	1
LICENSE FORFEIT	0	7		0	2
LITTERING - FROM MV	0	0		0	0
LIGHT EQUIPMENT VIOLATION	1	1		0	0
LITTERING - FROM MV	0	2		0	0
LOADS DROPPING - LEAKING; TRACKING MUD	0	3		1	3
MARKED LANES	3	14		3	10
MUFFLERS - EXCESS SMOKE OR GAS	1	1		0	1
MV STOP LIGHTS	0	6		1	6
NO LAMP EMITTING FLASHING OR STEADY RED LIGHT VISIBLE	0	0		1	1
NO LICENSE PLATE LIGHT	0	3		0	1
NO OPERATOR'S LICENSE	42	161		21	90
NON COMPLIANCE SUSPENSION	5	32		4	21
OBEYING TRAFFIC CONTROL DEVICES	5	14		2	10
OBSURED PLATES	0	4		0	0
OCCUPENT RESTRAINING DEVICES	0	1		0	0
ONE WAY STREETS & ROTARY TRAFFIC ISLAND	0	1		0	0
OPEN CONTAINER LIQUOR	0	2		0	0
OPERATING MV OR MOTORCYCLE WITHOUT VALID LICENSE	0	4		0	43
OPERATION OF VEHICLE OTHER THAN BICYCLE ON SIDEWALK	0	0		1	1
OPERATION AT YIELD SIGN	1	1		0	0
OVERTAKING AND PASSING OF VEHICLES	0	2		1	3
OVERTAKING AND PASSING ON RIGHT	0	2		0	0
OVI	0	0		0	2
OVI .17% >	0	0		0	1
OVI PER SE BREATH (.17 + (SUPER)	0	10		0	5
OVI REFUSAL (PRIOR W/20 YRS)	8	20		5	12
OVI, BREATH	5	15		2	17
OWNER OR OPERATOR ALLOWING ANOTHER TO DRIVE	0	2		3	5
PASSING - DOUBLE YELLOW	0	2		0	3
PASSING LEFT OF CENTER	1	2		0	2
PEDESTRIAN SOLICITING	0	0		0	1
PHYSICAL CONTROL	0	5		0	3
PHYSICAL CONTROL OF VEHICLE WHILE UNDER INFLUENCE	1	3		0	0
PROHIBITED TURN IN ROADWAY	3	6		0	0
PROHIBITED U-TURN	0	1		0	1
PROVIDING FALSE INFORMATION TO POLICE OFFICER	0	1		0	0
REAR RED REFLECTORS REQUIRED	1	1		0	0
RECKLESS OPERATION	0	1		1	3
RECKLESS OPERATION - PRIVATE	2	3		1	2
RECKLESS OPERATION - ROADWAY	0	2		0	0
RIGHT OF WAY AT INTERSECTIONS	0	1		0	0
RIGHT OF WAY OF PEDESTRIAN W/IN CROSSWALK	0	1		0	1
RIGHT OF WAY OF PUBLIC SAFETY VEHICLES	0	0		0	1
RIGHT OF WAY YIELDED TO PEDESTRIAN ON SIDEWALK	0	0		0	0
RIGHT OF WAY/LEFT	3	14		8	30
RIGHT-OF-WAY ON ROADWAY	3	10		1	7
RIGHT-OF-WAY TO PEDESTRIAN ON SIDEWALK	1	2		0	0
RULES FOR STARTING AND BACKING VEHICLES	0	1		0	1
RULES FOR TURNS AT INTERSECTIONS	1	3		1	4
SAFETY BELT, BOOSTER SEAT	0	0		1	1
SEAT BELTS REQUIRED	0	8		1	10
SHIFTING LOAD - LOOSE LOADS	0	1		0	0
SIGNAL LIGHTS	1	4		1	5
SLOW SPEED	0	0		0	2
SPACE BETWEEN MOVING VEHICLES	0	1		1	1
SPEED - SCHOOL ZONE	18	77		33	82
SPEED LIMIT	412	1681		383	1572
SPEED LIMITATIONS OVER BRIDGES	0	0		0	1
SQUEALING TIRES - NOISE	0	0		0	1

TRAFFIC ENFORCEMENT SUMMARY

NUMBER OF CITATIONS ISSUED	OCT-DEC 2016 TOTAL	2016 YTD	VS	OCT-DEC 2015 TOTAL	2015 YTD
TOTAL	852	3,610		769	3,080

TRAFFIC CHARGES

TYPE OF CITATION	OCT-DEC 2016 TOTAL	2016 YTD	VS	OCT-DEC 2015 TOTAL	2015 YTD
STARTING AND BACKING VEHICLE	1	5		1	5
STOP AND YIELD RIGHT OF WAY SIGNS	0	1		0	0
STOP AND YIELD SIGNS	8	17		1	20
STOP SIGNS	11	43		13	27
STOPPING AFTER ACCIDENT	1	3		1	5
STOPPING AFTER ACCIDENT INVOLVING INJURY TO PERSONS OR PROP.	0	0		0	4
STOPPING AFTER ACCIDENT INVOLVING DAMAGE TO REALITY	0	0		1	1
STOPPING AFTER INJURY ACCIDENT	0	0		1	2
STOPPING FOR SCHOOL BUS	1	8		6	10
TAIL LIGHT - ILLUMINATION OF REAR LICENSE PLATE	0	2		1	3
TEMP PERMIT (OPERATING SOLO)	3	10		1	8
TEXTING WHILE DRIVING	1	2		0	1
TIME FOR LIGHTED LIGHTS ON MOTOR VEHICLES	1	2		0	1
TOWING REQUIREMENTS	0	0		0	1
TRAFFIC CHARGES - HEADLIGHTS	0	4		0	4
TRAFFIC CHARGES - RIGHT OF WAY	0	0		1	1
TRAFFIC CHARGES ILLEGAL OR REAR PLATES	1	8		1	1
TRAFFIC CONTROL DEVICE	1	6		1	5
TRAFFIC CONTROL SIGNAL TERMS AND LIGHTS	0	1		2	5
TRAFFIC SIGNAL RIGHT TURN ON RED	1	2		1	1
TURN AND STOP SIGNAL	3	10		2	12
TURN SIGNAL REQUIRED	2	6		2	4
TURNING INTO PRIVATE DRIVEWAY, ALLEY OR BUILDING	0	1		0	0
TURNING IN ROADWAY PROHIBITED	0	0		1	2
TWO LIGHTS DISPLAYED	3	7		4	8
U-TURN PROHIBITED	5	8		0	2
UNRULY JUVENILE OFFENSES	0	0		2	3
UNSAFE BACKING	0	6		5	9
UNSAFE LANE CHANGE	1	5		0	13
UNSAFE VEHICLE	0	2		0	1
USE ILLEGAL PLATES; TRANSFER OF REGISTRATION	0	1		0	5
USE OF SUNSCREENING, WINDOW TINT	1	4		0	2
U-TURN PROHIBITED	0	0		0	1
VIOL. PROBATIONARY LICENSE	1	7		3	3
WEAVING	0	1		0	0
WRONGFUL ENTRUSTMENT	0	3		0	1
YIELD SIGNS	24	56		4	7
MISCELLANEOUS CITATIONS	0	6		2	22
TOTAL	980	4,107		856	3,412

PARKING CITATION CHARGES

TYPE OF CITATION	OCT-DEC 2016 TOTAL	2016 YTD	VS	OCT-DEC 2015 TOTAL	2015 YTD
PROHIBITED STANDING OR PARKING PLACES	6	23		1	51
MANNER OF PARALLEL PARKING; HANDICAPPED PARKING	1	14		4	13
HANDICAP PARKING	0	33		0	15
OPEN VEHICLE DOOR ON TRAFFIC SIDE	0	0		0	2
PROHIBITED PARKING ON STREETS & HIGHWAYS	0	1		1	1
MAX CONTINUOUS STREET PARKING - SAME LOCATON	0	0		1	1
PARKING RESTRICTIONS IN RESIDENTIAL DISTRICTS	0	0		0	2
PARKING FIRE LANE	2	3		1	1
TOTAL	9	74		8	86

TOTAL CITATIONS	989	4,181	864	3,498
------------------------	------------	--------------	------------	--------------

ADULT ARREST SUMMARY

ACTUAL NUMBER OF ADULTS ARRESTED	OCT-DEC 2016 TOTAL	2016 YTD	VS	OCT-DEC 2015 TOTAL	2015 YTD
TOTAL	152	636		100	420

BREAKDOWN OF CHARGES	OCT-DEC 2016 TOTAL	2016 YTD	VS	OCT-DEC 2015 TOTAL	2015 YTD
ACDA	0	1		1	10
AGG. TRESPASS	0	0		0	2
AGGRAVATED BURGLAR - INFLICT HARM	0	0		1	1
AGGRAVATED MENACING	1	5		1	3
AGGRAVATED POSSESSION OF DRUGS	0	0		0	5
AGGRAVATED ROBBERY	0	1		0	0
AGGRAVATED VEHICULAR HOMICIDE	0	0		1	1
ALCOHOL-FAKE/ALTERED ID	0	0		0	2
ALCOHOL-UNDERAGE POSSESSION	1	7		4	38
ANIMAL AT LARGE	0	1		0	0
ANIMALS OR FOWL RUNNING AT LARGE	0	4		0	10
ARSON	1	1		0	0
ASSAULT	7	23		0	3
ASSAULT - KNOWINGLY HARM VICTIM	0	0		8	30
ATTEMPT	0	1		0	0
BENCH WARRANT	0	0		0	0
BREAKING AND ENTERING	0	0		0	0
BURGLARY	0	2		0	0
BURGLARY - TRESPASS IN OCCUPIED STRUCTURE, SEPARATELY SECUR	0	0		1	1
CARRYING CONCEALED WEAPONS	1	3		0	0
CHILD RESTRAINT	0	0		0	1
COMPLICITY	1	4		1	7
COMPLICITY TRAFFICKING IN HEROIN	0	0		0	1
CONFINEMENT OF DOGS-DANGEROUS/VICIOUS DOGS-DEBARKED VIC DOG	0	0		1	1
CONTRIBUTING TO THE UNRLINESS/ DELINQUENCY OF A CHILD - AID,	0	1		0	0
CRIMINAL DAMAGING/ENDANGERING	1	3		1	3
CRIMINAL MISCHIEF	1	1		1	4
CRIMINAL TRESPASS	1	3		1	9
CRIMINAL TRESPASS - FAIL TO LEAVE; RECKLESSLY	0	0		0	1
CRIMINAL TRESPASS - LAND PREMISES OF ANOTHER	0	0		0	1
DECEPTION TO OBTAIN A DANGEROUS DRUG	0	0		1	3
DISCHARGE OF WEAPONS	0	1		0	1
DISORDERLY CONDUCT	1	12		1	6
DISORDERLY CONDUCT - INTOXICATED CREATE RISK OF HARM	0	0		1	1
DISORDERLY CONDUCT/INTOX.	0	0		0	24
DISORDERLY CONDUCT-INTOX. PERSISTENT	0	1		0	0
DOG AT LARGE	1	1		0	0
DOMESTIC VIOLENCE	2	15		1	10
DOMESTIC VIOLENCE - CAUSE BELIEF OF IMMINTENT PHYSICAL HARM	0	0		0	4
DOMESTIC VIOLENCE - KNOWINGLY CAUSE PHYSICAL HARM	0	0		6	25
DOMESTIC VIOLENCE - MENACING OR INTIMIDATION	1	5		0	0
DOMESTIC VIOLENCE - SIMPLE ASSAULT	7	12		0	0
DOMESTIC VIOLENCE - USE OF WEAPON OR AGGRAVATED INJURY	0	0		0	1
DRIVING UNDER OVI SUSPENSION	2	6		0	0
DRIVING UNDER SUSPENSION	2	6		4	17
DRIVING UNDER SUSPENSION OR VIOLATION OF LICENSE RESTRICTION	3	5		0	0
DRIVING WHILE UNDER INFLUENCE	0	1		0	0
DRIVING WHILE UNDER THE INFLUENCE OF ALCOHOL/ DRUGS	31	90		22	70
DRIVING WITHIN MARKED LANES	0	2		0	11
DRUG ABUSE - INSTRUMENT	0	5		0	4
DRUG ABUSE - MARIJUANA	19	71		8	28
DRUG ABUSE - MARIJUANA LESS THAN 100G	0	1		3	5
DRUG ABUSE - SCHEDULE I OR II SUBSTANCE	0	5		1	5
DRUG ABUSE - SCHEDULE III, IV, V SUBSTANCE	0	2		0	3
DRUG ABUSE; CONTROLLED SUBSTANCE POSSESSION OR USE	0	0		0	1
DRUG PARAPHERNALIA	15	55		8	29
DRUG PARAPHERNALIA - POSS./USE	0	4		1	6
DUS - 12 POINT SUSPENSION	0	1		0	2
DUS - OVI SUSPENSION	0	0		2	7

ADULT ARREST SUMMARY

ACTUAL NUMBER OF ADULTS ARRESTED	OCT-DEC 2016 TOTAL	2016 YTD	VS	OCT-DEC 2015 TOTAL	2015 YTD
TOTAL	152	636		100	420

BREAKDOWN OF CHARGES	OCT-DEC 2016 TOTAL	2016 YTD	VS	OCT-DEC 2015 TOTAL	2015 YTD
DUS- FAIL TO REINSTATE	0	0		0	2
DUS NON COMPLIANCE SUSPENSION	1	2		2	6
ENDANGERING CHILDREN	0	3		0	2
ENDANGERING CHILDREN - OPERATING VEHICLE UNDER INFLUENCE OF	0	0		0	2
EXP REGISTRATION	0	0		1	4
FAIL TO STOP AT RED LIGHT	0	0		0	2
FAILURE TO APPEAR	0	0		0	2
FAILURE TO REGISTER	0	1		0	2
FAIL TO YIELD-PRIVATE DRIVE	0	1		0	0
FAILURE TO AID A L.E. OFFICER	0	1		0	0
FAILURE TO APPEAR	1	9		3	35
FAILURE TO APPEAR; ISSUANCE OF WARRANT	3	8		0	0
FAILURE TO COMPLY WITH ORDER OR SIGNAL OF P.O.	2	3		0	0
FAILURE TO COMPLY/FLEEING	0	0		0	0
FAILURE TO CONTROL	6	18		6	7
FAILURE TO DISCLOSE PERSONAL INFORMATION	0	1		0	0
FAILURE TO YIELD RIGHT OF WAY	1	1		0	0
FALSIFICATION	2	11		1	3
FALSIFICATION - PUBLIC OFFICIAL, MISLEAD	0	0		1	2
FELONIOUS ASSAULT	0	0		0	2
FLASHING RED LIGHT	0	1		0	1
FORGERY	1	1		0	0
FTA/FTC	0	1		0	2
FTY - TURNING LEFT	0	1		0	1
HARASSMENT BY INMATE	1	1		0	0
HAVING PHYSICAL CONTROL OF VEHICLE WHILE UNDER THE INFLUENCE	1	3		0	0
HIT/SKIP - CODE 2/4	1	4		2	2
HIT/SKIP - CODE 2P/4P	0	0		1	1
IDENTITY FRAUD	0	3		0	0
ILLEGAL ASSEMBLY OR POSSESSION OF CHEMICALS - MANF OF DRUGS	0	0		0	0
ILLEGAL POSSESSION OF INTOXICATING BEER OR LIQUOR	0	2		0	0
ILLEGAL PROCESSING OF DRUG DOCUMENTS - THEFT	0	1		0	0
ILLEGAL USE OR POSSESSION OF DRUG PARAPHERNALIA	0	0		2	2
IMPERSONATING A PEACE OFFICER OR PRIVATE POLICEMAN - IMPERSONATING	0	0		0	1
IMPROPERLY HANDLING FIREARMS IN A MOTOR VEHICLE	0	1		0	5
IMPROPER TURNS AT INTERSECTION	0	0		2	2
INTIMIDATION	0	1		0	0
KIDNAPPING	0	1		0	2
LANE CHANGE - UNSAFE	0	2		0	0
LEAVING THE SCENE OF AN ACCIDENT	1	5		0	1
LEFT OF CENTER	0	2		1	5
LITTERING - FROM MV	0	1		0	0
MARIJUANA - LESS THAN 100 GRAMS	0	3		1	6
MARIJUANA DRUG PARAPHERNALIA	12	43		0	0
MARKED LANES	2	6		1	7
MENACING	1	3		1	4
MINOR CONSUMPTION	0	0		0	1
MOTOR VEHICLE THEFT	0	1		0	0
NO OPS	1	5		5	8
NONSUPPORT OF DEPENDENTS	0	1		0	0
OBSTRUCTING OFFICIAL BUSINESS	0	8		1	9
OFFENSES INVOLVING UNDERAGE PERSONS	2	18		0	0
OPEN CONTAINER	0	2		0	2
OPEN CONTAINER - OPERATOR OR PASSENGER OF MOTOR VEHICLE	0	1		1	3
OPEN CONTAINER LIQUOR	4	10		0	0
OUT OF JURISDICTION WARRANT	0	1		0	4
OVI	1	15		0	17
OVI .17% >	0	1		0	1
OVI BREATH	0	3		2	20

ADULT ARREST SUMMARY

ACTUAL NUMBER OF ADULTS ARRESTED	OCT-DEC 2016 TOTAL	2016 YTD	VS	OCT-DEC 2015 TOTAL	2015 YTD
TOTAL	152	636		100	420

BREAKDOWN OF CHARGES	OCT-DEC 2016 TOTAL	2016 YTD	VS	OCT-DEC 2015 TOTAL	2015 YTD
OVI PER SE	0	2		1	1
OVI PER SE BREATH (.17 + (SUPER)	0	2		0	5
OVI PRIOR CONVICTION W/IN 20 YEARS, REFUSAL	0	1		0	2
OVI - REFUSAL	0	0		0	4
OVI REFUSAL (PRIOR W/20 YRS)	0	2		3	9
PERSONS UNDER 21 NOT TO PURCHASE BEER OR LIQUOR	0	1		0	0
PETTY THEFT	0	1		0	2
PHYSICAL CONTROL	0	5		0	10
POSSESSING CRIMINAL TOOLS	1	13		0	1
POSSESSING DRUG ABUSE INSTRUMENTS	2	1		0	2
POSSESSING DRUG ABUSE INSTRUMENT - OBTAIN, USE	0	1		4	9
POSSESSION OF DRUGS	7	27		0	3
POSSESSION OF MARIJUANA	1	4		0	1
PROBATION VIOLATION	1	1		0	0
PROHIBITED ACTS	0	1		0	5
PROHIBITIONS - PERSONS UNDER 21	0	0		0	1
PROVIDING FALSE INFORMATION TO POLICE OFFICER	0	0		1	2
PUBLIC INDECENCY	2	3		0	0
RECEIVING STOLEN PROPERTY	2	9		0	7
RECKLESS OPERATION	0	0		0	1
RSP < \$500	0	0		0	1
RESISTING ARREST	2	2		0	0
ROBBERY - FORCE,THREAT OF FORCE	0	0		0	2
ROBBERY - USE OR THREATEN THE IMMEDIATE USE OF FORCE AGAINST	0	0		0	2
RULES FOR TURNS AT INTERSECTIONS	0	0		1	1
SALE, PURCHASE, OR USE OF ALCOHOL VAPORIZING DEVICE PROH.	0	1		0	0
SALE OF LIQUOR TO UNDERAGE PERSON - UNDERAGE CONSUME BEER IN	0	0		0	2
SALES TO & USE BY UNDERAGE PERSONS; SECURING PUBLIC ACCOMA.	0	0		1	9
SEXUAL IMPOSITION	1	1		0	0
SOCIAL HOSTING	0	1		0	0
SOLICITING - W/O PERMIT	0	0		1	1
SPACE BETWEEN MOVING VEHICLES	0	1		0	0
SPEED	3	11		2	15
STOP SIGN VIOLATION	0	0		0	1
TAIL LIGHT - ILLUMINATION OF REAR LICENSE PLATE	1	3		0	0
TAMPERING W/ EVIDENCE	0	0		1	1
TELEPHONE HARASSMENT	0	0		0	1
TELEPHONE HARASSMENT - CALL W/ PURPOSE TO ABUSE, THREATEN,AN	0	0		1	1
TELEPHONE HARASSMENT - FAIL TO DESIST	0	0		0	2
THEFT	0	0		1	1
THEFT - ALL OTHER LARCENY	6	12		0	6
THEFT - BEYOND EXPRESS / IMPLIED CONSENT	0	0		1	1
THEFT - FROM BUILDING	0	0		0	1
THEFT - FROM MOTOR VEHICLE	0	1		0	0
THEFT - PETTY (<\$500)	0	0		0	6
THEFT - PETTY (<\$1000)	0	6		2	14
THEFT - SHOPLIFTING	0	3		0	6
TRAFFIC CONTROL DEVICE	0	0		0	2
TRAFFIC CHARGES - HEADLIGHTS 4513.14A	0	0		0	9
TRAFFICKING IN DRUGS	0	0		0	2
TURN AND STOP SIGNAL	0	2		0	0
TURN SIGNAL REQUIRED	0	2		1	2
UNAUTHORIZED USE OF MOTOR VEHICLE	0	1		0	0
UNDERAGE CONSUMPTION OF ALCOHOL	0	1		0	0
UNDERAGE POSSESSION - PURCHASE - CONSUMPTION	1	2		1	3
UNDERAGE POSSESSION OF ALCOHOL	0	0		1	1
UNLAWFUL RESTRAINT - KNOWINGLY RESTRAIN PERSON`S LIBERTY	0	0		0	1
USE ILLEGAL PLATES; TRANSFER OF REGISTRATION	0	0		1	1
VIOLATE PROTECTION ORDER OR CONSENT AGREEMENT	1	6		4	5

ADULT ARREST SUMMARY

ACTUAL NUMBER OF ADULTS ARRESTED	OCT-DEC 2016 TOTAL	2016 YTD	VS	OCT-DEC 2015 TOTAL	2015 YTD
TOTAL	152	636		100	420

BREAKDOWN OF CHARGES	OCT-DEC 2016 TOTAL	2016 YTD	VS	OCT-DEC 2015 TOTAL	2015 YTD
WARRANT ARREST	1	1		0	0
WARRANT ARREST FOREIGN AGENCY	28	105		7	36
WARRANT ARREST FTA/FTC	18	105		9	41
TOTAL	221	914		159	817

JUVENILE ARREST SUMMARY

ACTUAL NUMBER OF JUVENILES ARRESTED	OCT-DEC 2016 TOTAL	2016 YTD	VS	OCT-DEC 2015 TOTAL	2015 YTD
TOTAL	26	117		33	109

BREAKDOWN OF CHARGES	OCT-DEC 2016 TOTAL	2016 YTD	VS	OCT-DEC 2015 TOTAL	2015 YTD
AGGRAVATED POSSESSION OF DRUGS	0	0		1	1
ALCOHOL-UNDERAGE POSSESSION	2	6		6	30
ARSON	1	1		0	0
ASSAULT	4	13		0	1
ASSAULT - KNOWINGLY HARM VICTIM	0	2		2	4
CARRYING CONCEALED WEAPONS	0	1		0	1
COMPLICITY	1	1		0	0
CONVEYANCE OR POSSESSION OF A DEADLY WEAPON - SCHOOL	1	1		2	3
CRIMINAL DAMAGING	0	0		0	1
CRIMINAL DAMAGING/ENDANGERING	0	0		0	1
CRIMINAL MISCHIEF	1	1		0	0
CRIMINAL TRESPASS	1	2		0	0
CURFEW	1	5		0	8
CURFEW (13-17)	1	34		8	26
DISCHARGE OF FIREARM ON OR NEAR PROHIBITED PREMISES	1	1		0	0
DISORDERLY CONDUCT	1	2		3	8
DOMESTIC VIOLENCE	0	7		1	1
DOMESTIC VIOLENCE - CAUSE BELIEF OF IMMINTENT PHYSICAL HARM	0	0		0	1
DOMESTIC VIOLENCE - SIMPLE ASSAULT	4	5		0	0
DRIVING WHILE UNDER THE INFLUENCE OF ALCOHOL/ DRUGS	0	0		0	1
DRUG ABUSE; CONTROLLED SUBSTANCE POSSESSION OR USE	0	0		1	1
DRUG ABUSE - MARIJUANA	1	6		3	5
DRUG ABUSE - MARIJUANA LESS THAN 100G	0	0		1	1
DRUG ABUSE - SCHEDULE III, IV, V SUBSTANCE	0	0		1	2
DRUG PARAPHERNALIA	2	6		4	12
DRUG PARAPHERNALIA - POSS./USE	0	1		0	0
ESCAPE	0	1		0	0
FALSIFICATION	2	5		0	2
ILLEGAL CONSUMPTION OF INTOXICATING BEER OR LIQUOR	1	1		0	0
ILLEGAL POSSESSION OF INTOXICATING BEER OR LIQUOR	1	4		0	0
IMPROPERLY HANDLING FIREARMS IN A MOTOR VEHICLE	0	1		0	0
INDUCING PANIC	1	1		0	0
MARIJUANA DRUG PARAPHERNALIA	0	1		0	0
MARKED LANES	0	0		0	1
MENACING	0	0		0	1
NO OPS	0	1		1	1
OBSTRUCTING OFFICIAL BUSINESS	0	6		0	3
OFFENSES INVOLVING UNDERAGE PERSONS	1	15		0	0
OMVUAC	0	0		0	1
OVI, BREATH	0	0		0	1
PARKS HOURS OF OPERATIONS	0	1		0	0
PERSONS UNDER 21 NOT TO PURCHASE BEER OR LIQUOR	0	1		0	0
POSS. DRUG ABUSE INSTRUMENTS	0	0		0	1
POSSESSION OF CONTROLLED SUBSTANCE	0	0		1	1
POSSESSION OF DRUGS	1	3		0	0
POSSESSION OF MARIJUANA	1	2		0	0
PROHIBITED ACTS	0	1		0	0
PUBLIC INDECENCY	0	2		0	0
RECEIVING STOLEN PROPERTY	2	2		0	6
SALES TO & USE BY UNDERAGE PERSONS; SECURING PUBLIC ACCOMA.	0	1		1	5
THEFT	0	0		0	1
THEFT-LARCENY/NON MOTOR VEHICLE	0	0		0	1
THEFT - ALL OTHER LARCENY	0	1		0	2
THEFT - PETTY (<\$1000)	0	1		0	1
TOBACCO	0	2		1	1
TRAFFIC CONTROL DEVICE	0	0		1	1
TRAFFICKING IN DRUGS	0	1		0	0
TRAFFICKING IN HARMFUL INTOXICANTS	0	1		0	0
UNDERAGE POSSESSION - PURCHASE - CONSUMPTION	0	1		2	2
TOTAL	32	151		40	140

ACCIDENTS

TYPE OF ACCIDENT	OCT-DEC 2016 TOTAL	2016 YTD	VS	OCT-DEC 2015 TOTAL	2015 YTD
FATAL	1	3		0	1
PROPERTY DAMAGE	156	573		134	549
HIT SKIP	32	123		19	97
INJURY ACCIDENT	42	221		63	256
INJURY HIT SKIP	1	12		6	11
TOTALS	232	932		222	914

ACCIDENT ANALYSIS

October - December 2016

October 1, 2016 through December 31, 2016 there were 232 reported traffic accidents, resulting in an average 2.52 accidents/day. Compared to 2015, accidents increased 4.50% (2016 = 232; 2015 = 222).

Personal injury accidents (44) accounted for 18.97% of the total (1 fatality). Property damage accidents accounted for the majority of our activity with 188 reports being filed (81.03%).

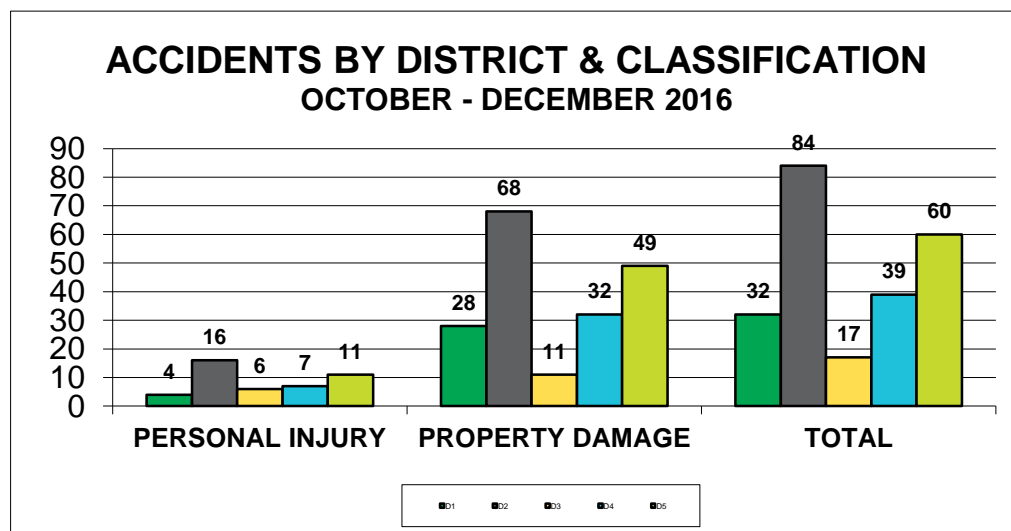
District 2 experienced the majority of accidents (84 or 36.2%) followed by District 5 with 60 accidents (25.9%). There were 32 collisions each in District 1 (13.8%), 17 collision in District 3 (7.3%) and 39 collisions in District 4 (16.8%). The busiest day of the week for accident activity for the reporting period was Tuesday with 55 accidents (23.7%) reported. The second busiest day was Monday with 38 accidents (16.4%) reported. Accident activity for the remaining days of the week were as follows: Sunday = 16 (6.9%); Wednesday = 30 (12.9%); Thursday = 33 (14.2%); Friday = 30 (12.9%); and Saturday = 30 (12.9%).

The most frequent contributing factor was Following Too Closely, which accounted for 66 or 28.4% of the accidents. The next most recurrent contributing factor was Failure To Yield 63 or 27.2% of the accidents for the reporting period. The busiest time of day for accident activity was between 5PM-6PM with 21 (9.1%) accidents.

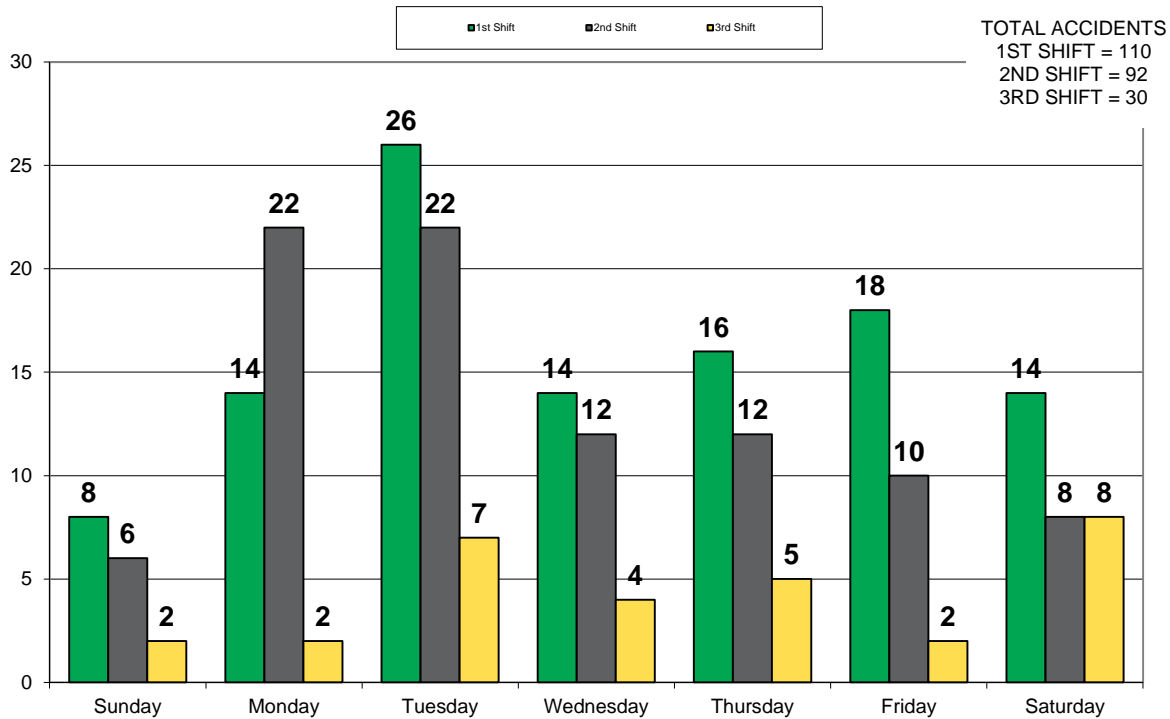
Eight (8) crashes were identified as having been alcohol related (3.4%). The drivers in these accidents were arrested and charged with OVI. One hundred ninety-two (192) citations were issued to at fault drivers as a result of their accidents (82.8%).

ACCIDENTS BY DISTRICT & CLASSIFICATION

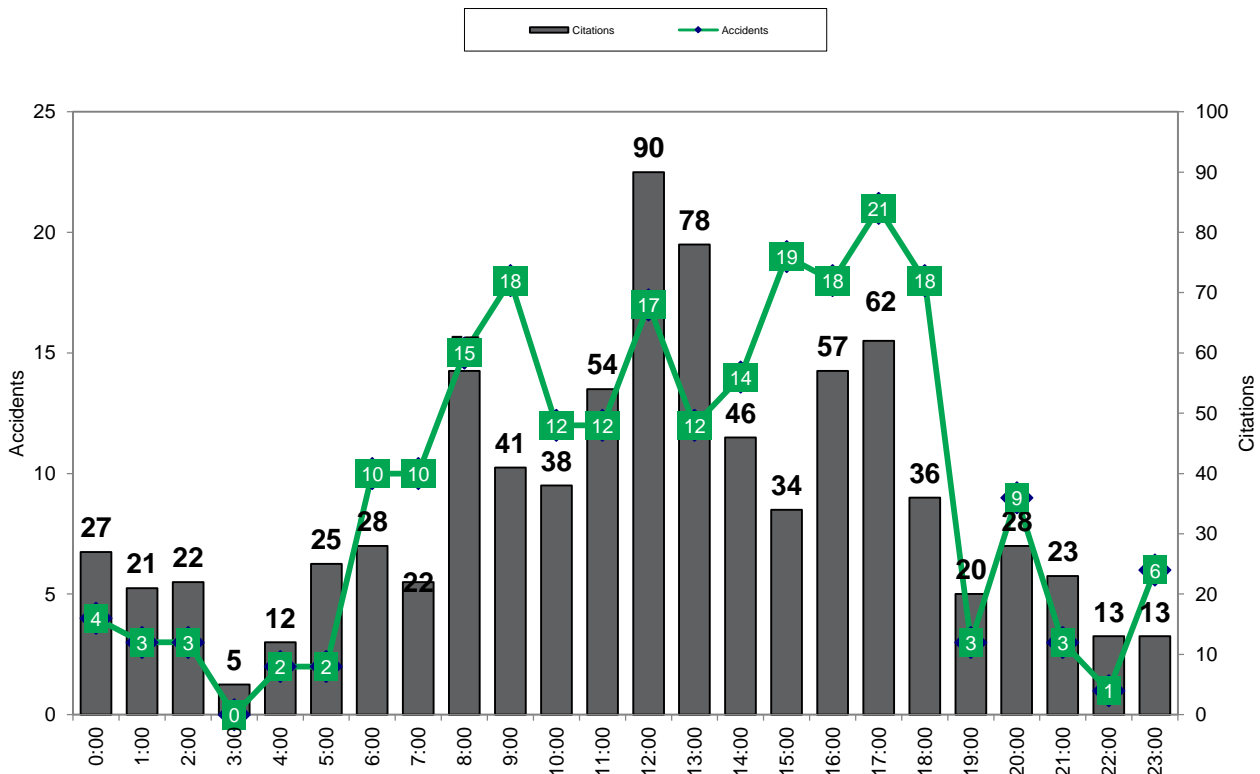
DISTRICT	PERSONAL INJURY	PROPERTY DAMAGE	TOTAL
D1	4	28	32
D2	16	68	84
D3	6	11	17
D4	7	32	39
D5	11	49	60
TOTAL	44	188	232



ACCIDENTS BY DAY OF WEEK & SHIFT OCTOBER 1 - DECEMBER 31, 2016



ACCIDENTS & CITATIONS BY HOUR OCTOBER 1 - DECEMBER 31, 2016



ACCIDENT ANALYSIS

January - December 2016

January 1, 2016 through December 31, 2016 there were 932 reported traffic accidents, resulting in an average 2.55 accidents/day. Compared to 2015, accidents increased 1.97% (2016 = 932; 2015 = 914).

Personal injury accidents (236) accounted for 25.3% of the total. Property damage accidents accounted for the majority of our activity with 696 reports being filed (74.7%).

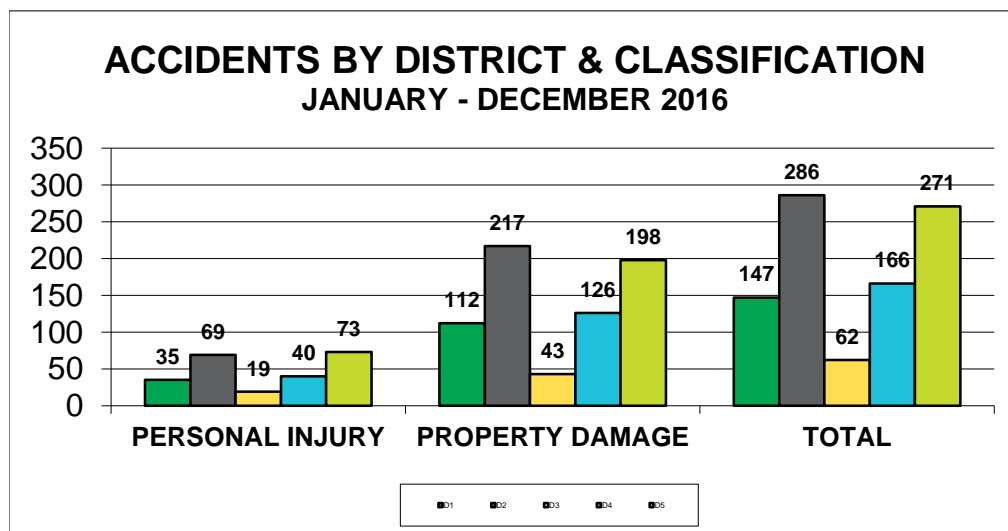
District 2 experienced the majority of accidents (286 or 30.7%) followed by District 5 with 271 accidents (29.1%). There were 147 collisions in District 1 (15.8%), 62 collisions in District 3 (6.7%) and in District 4, 166 accidents (17.8%). The busiest day of the week for accident activity for the reporting period was Tuesday with 177 accidents (19.0%) reported. The next busiest day was Friday with 162 accidents (17.4%) reported. Accident activity for the remaining days of the week were as follows: Sunday = 72 (7.7%); Monday = 136 (14.6%); Wednesday = 144 (15.5%); Thursday = 140 (15.0%) and Saturday = 101 (10.8%).

The most frequent contributing factor was Following Too Closely, which accounted for 304 or 32.6% of the accidents. The next most recurrent contributing factor was Failure To Yield (162 or 17.4%) followed by Failure To Control accounting for 129 or 13.8% of the accidents for the reporting period. The busiest time of day for accident activity was between 5PM-6PM with 111 (11.9%) accidents.

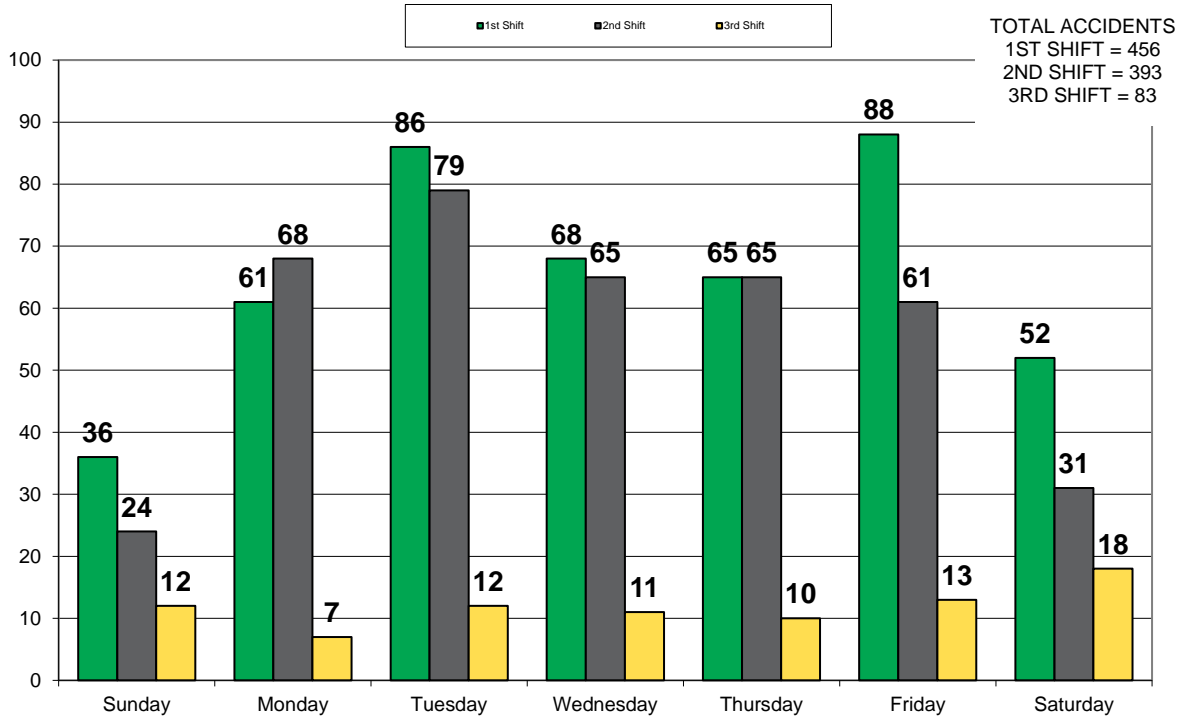
Twenty-seven (27) crashes were identified as having been alcohol related (2.9%). The drivers in these accidents were arrested and charged with OVI. Seven hundred fifty-nine (759) citations were issued to at fault drivers as a result of their accidents (81.4%).

ACCIDENTS BY DISTRICT & CLASSIFICATION

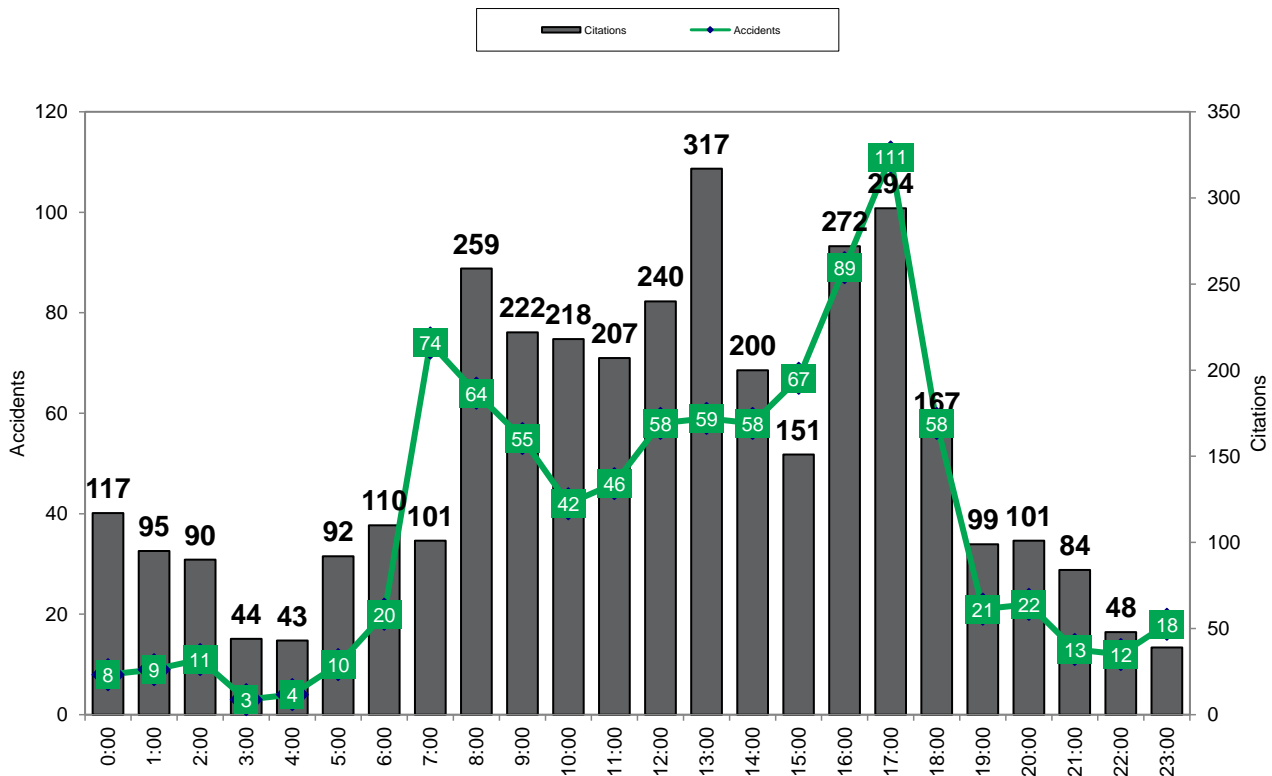
DISTRICT	PERSONAL INJURY	PROPERTY DAMAGE	TOTAL
D1	35	112	147
D2	69	217	286
D3	19	43	62
D4	40	126	166
D5	73	198	271
TOTAL	236	696	932



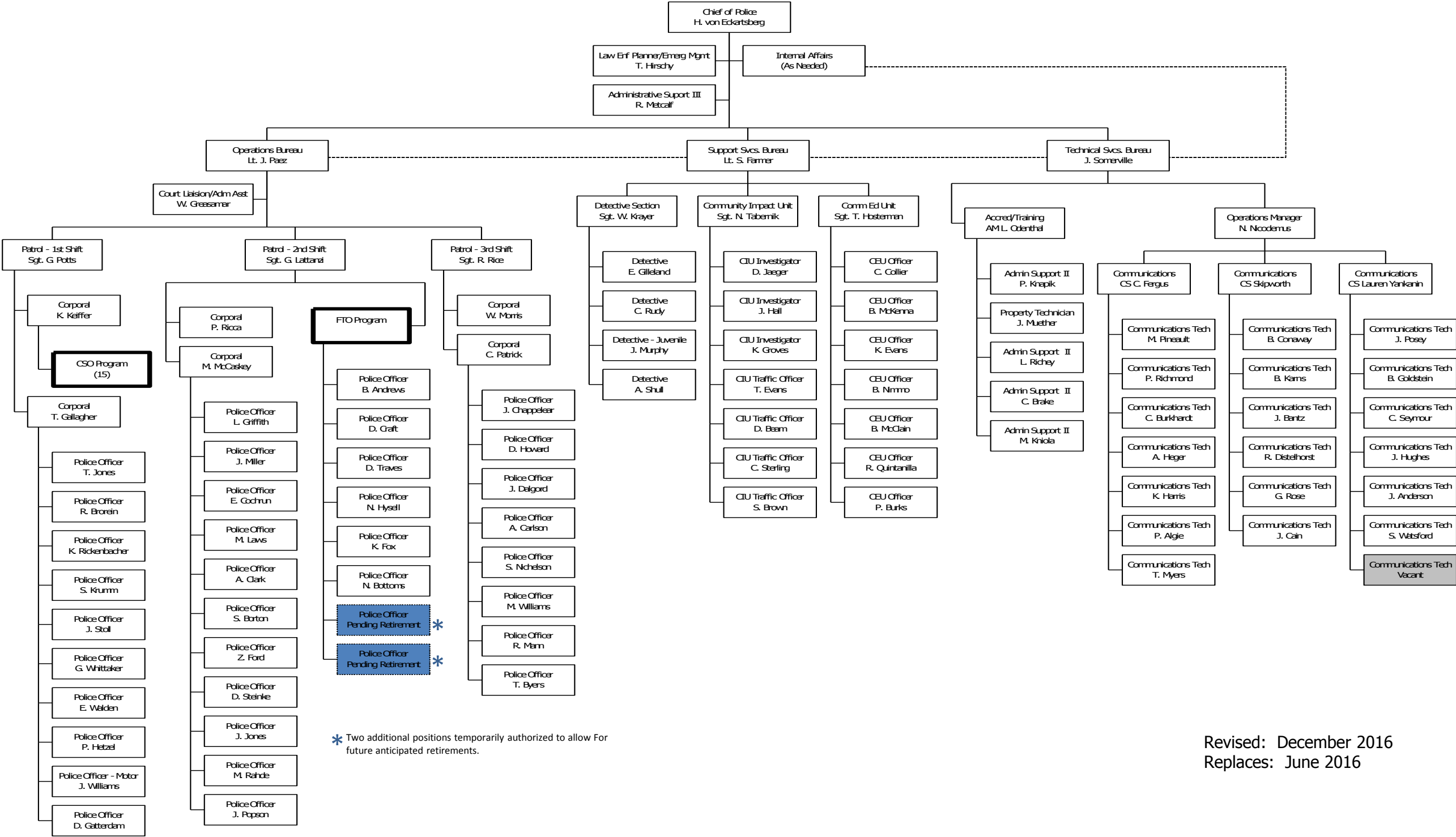
ACCIDENTS BY DAY OF WEEK & SHIFT JANUARY 1 - DECEMBER 31, 2016



ACCIDENTS & CITATIONS BY HOUR APRIL 1 - DECEMBER 31, 2016



City of Dublin - Division of Police - Organizational Chart - Standard 11.1.2



* Two additional positions temporarily authorized to allow For future anticipated retirements.

Revised: December 2016
Replaces: June 2016