

FINAL SITE PLAN

**BUILDING Z2 - MIXED USE**

88 NORTH HIGH STREET

DUBLIN, OHIO 43017

USE	AREA
RETAIL	9,586 SF
STORAGE	842 SF
PATIO	1,805 SF
RESIDENTIAL	6,319 SF
BALCONIES	436 SF
TOTAL	18,988 SF

REFER TO PARKING CALCULATION  
SHEET FOR REQUIRED NUMBER  
OF PARKING SPACES FOR BLOCK Z

DIMENSIONAL ASPHALT SHINGLES  
*CERTAINTED LANDMARK SERIES  
WEATHERED WOOD, or similar*

FIBER CEMENT SIDING  
*Sherwin Williams  
SW 7316 Aqua-Sphere, or similar*

FIBER CEMENT TRIM  
*Sherwin Williams  
SW 7566 Westhighland White,  
or similar*

ALUMINUM WINDOW  
*Linetec Dark Bronze  
ANO-303*

ROWLOCK COURSES

METAL GUARDRAIL  
*Paint to match  
Storefront System*

SOLDIER COURSE  
BRICK #1  
*GENERAL SHALE  
MORNING SMOKE, or similar*

ROWLOCK COURSE

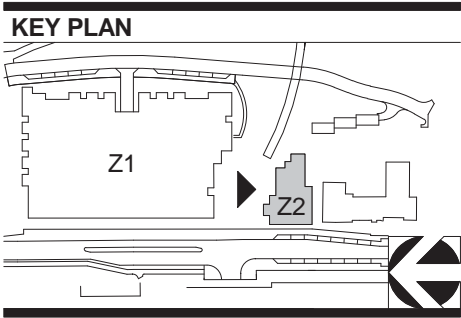
GLAZED STOREFRONT SYSTEM  
*Tubelite Dark Bronze - DB  
Class 1 Anodized Finish, Dark Range*

ALUMINUM CANOPY  
*Finish to match Storefront System*

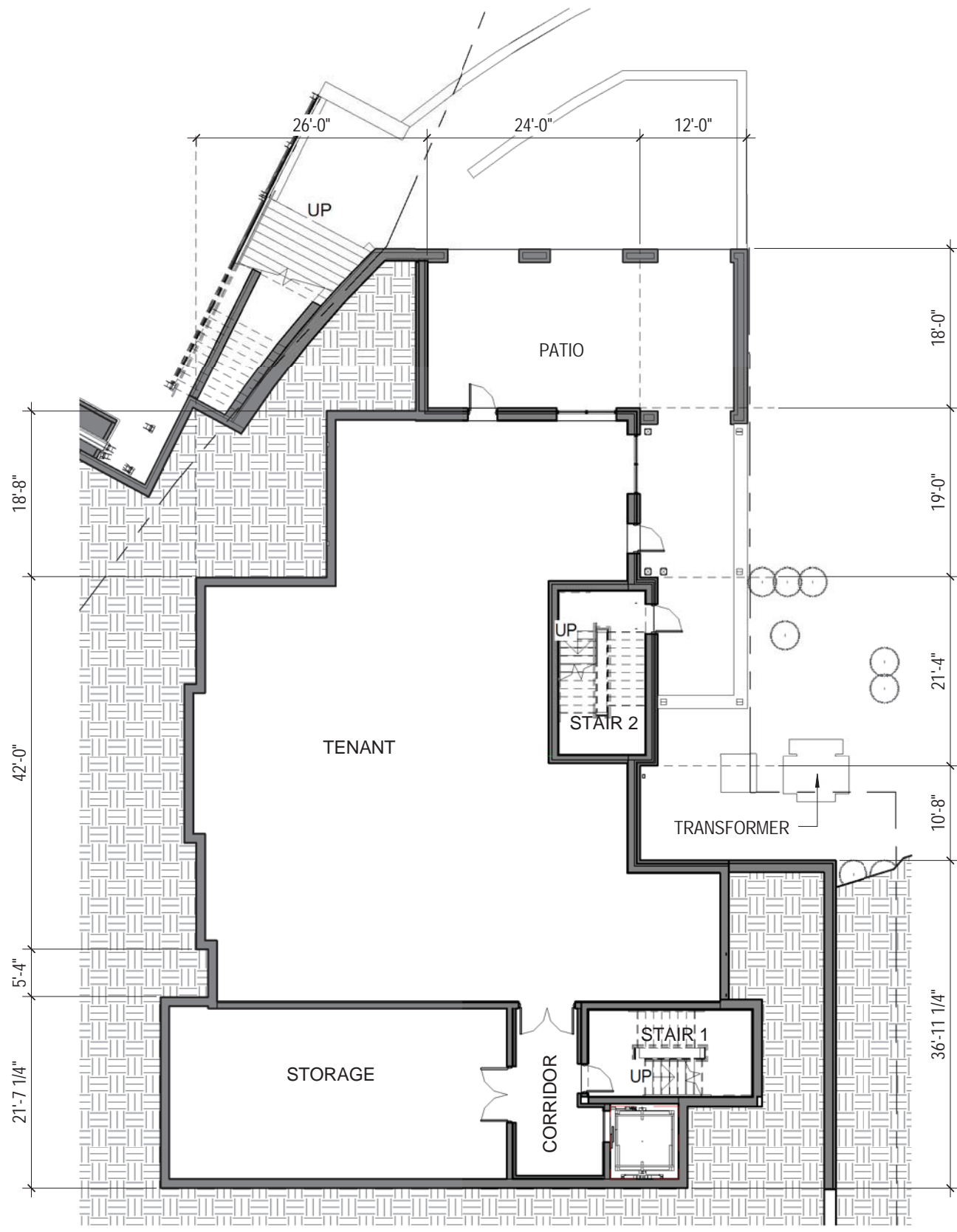
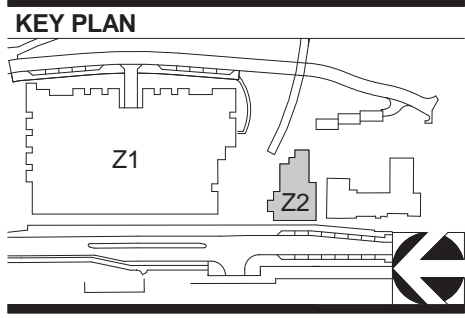
WOOD SIDING & TRIM  
*Natural Red Cedar, Stained*

BRICK #2  
*GLEN GERY  
VALDOSTA, or similar*

EXTERIOR WALL SCONCE  
*KICHLER ATWOOD, or similar*



HISTORIC MIXED USE BUILDING TYPE



**1** **00 - LOWER FLOOR PLAN - Z2**  
1/16" = 1'-0"

HISTORIC MIXED USE BUILDING TYPE

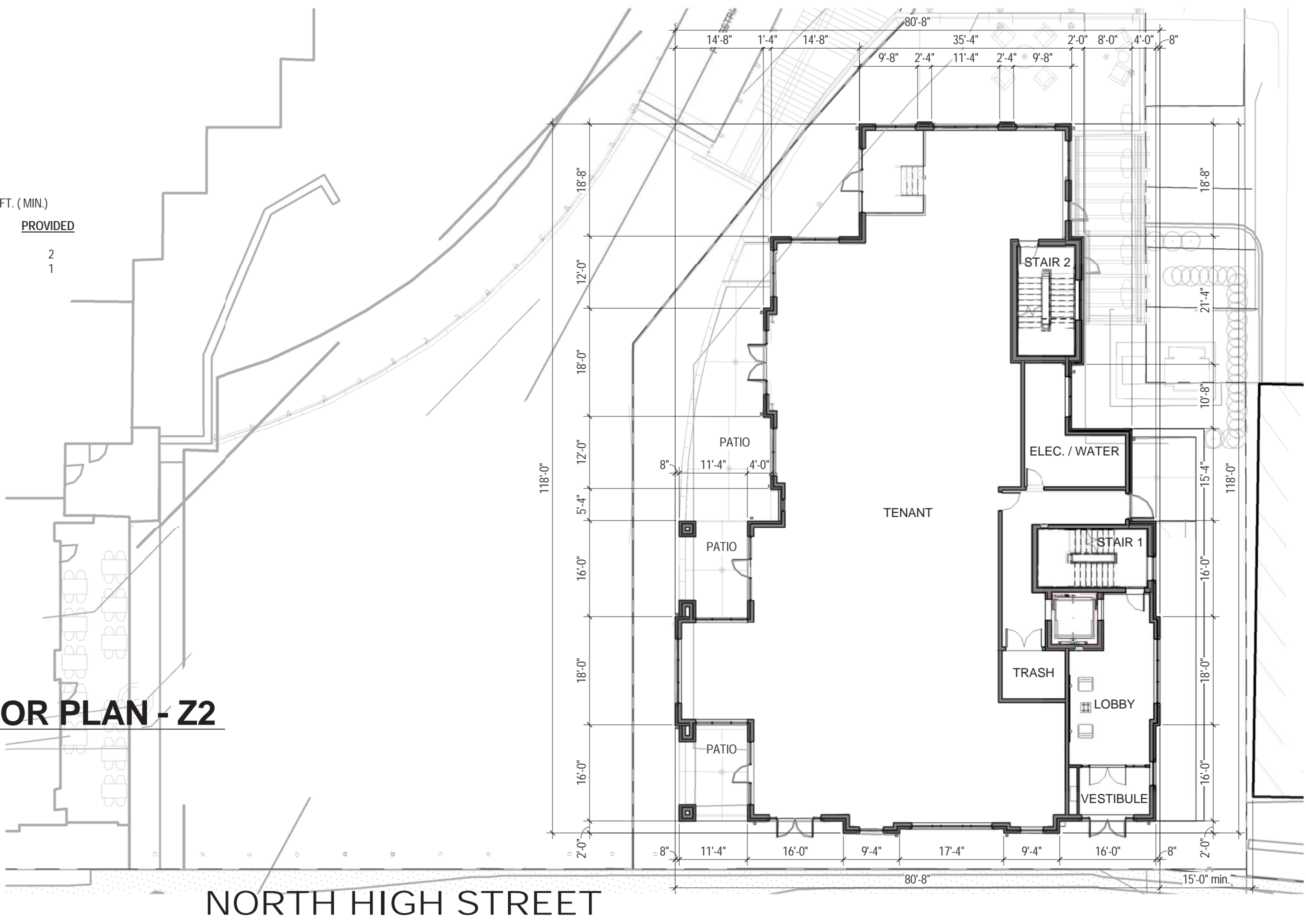
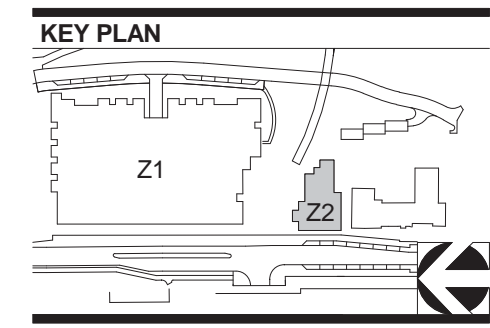


STREET FACADE ENTRANCES REQUIRED  
1 PER 40' OF FACADE WALL FOR BUILDINGS OVER 60 FT. ( MIN.)

STREET	FACADE LENGTH	# REQ'D	PROVIDED
NORTH HIGH STREET	80'-8"	2	2
NORTH RIVERVIEW	80'-8"	2	1

1

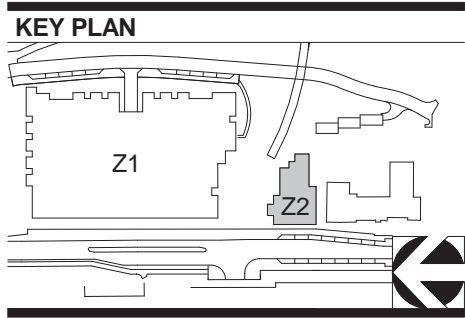
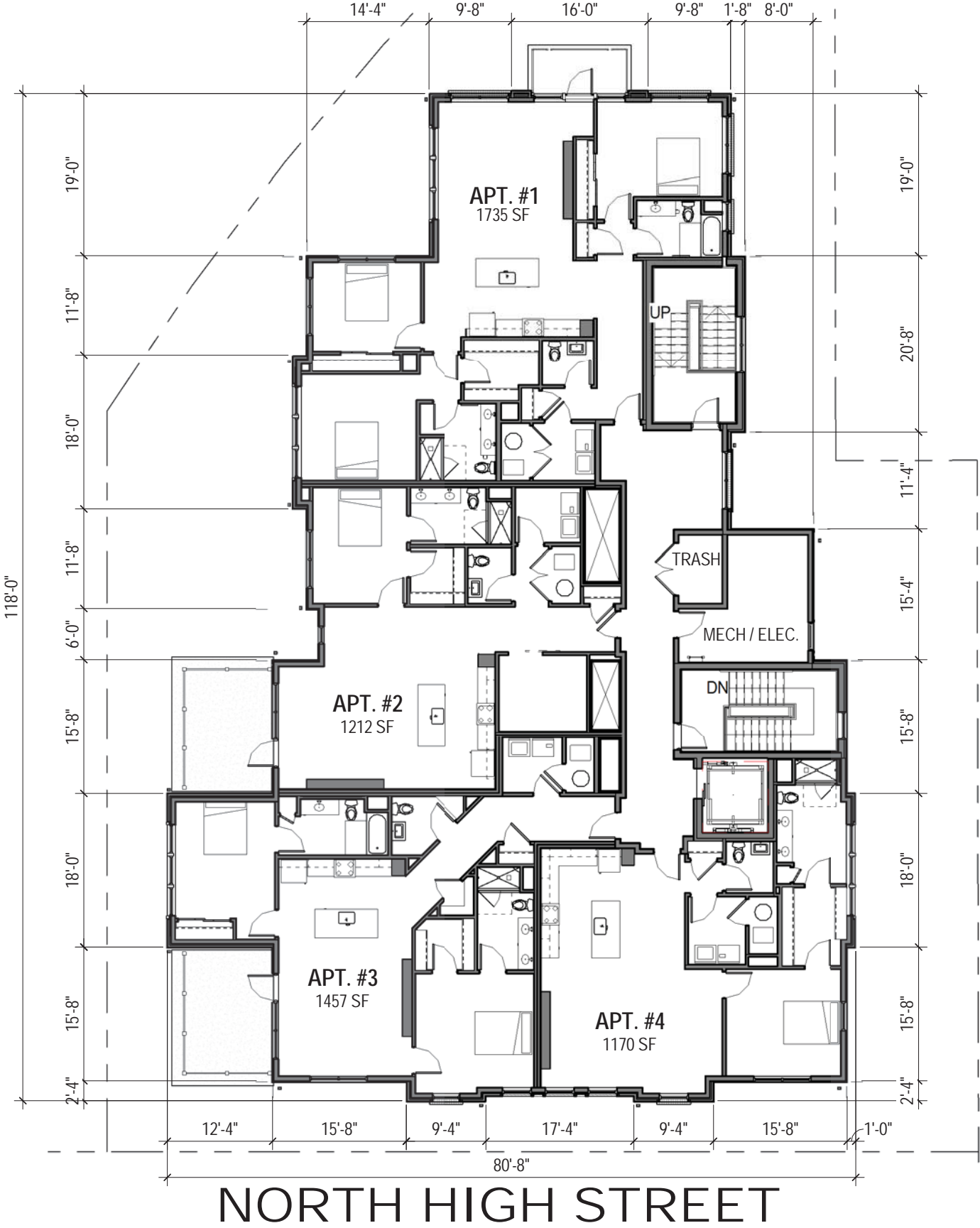
01 FIRST FLOOR PLAN - Z2  
1/16" = 1'-0"



NORTH HIGH STREET

HISTORIC MIXED USE BUILDING TYPE

UNIT	AREA
3 BR (APT. #1)	1,735 SF
2 BR (APT. #3)	1,457 SF
1 BR (APT. #2)	1,212 SF
1 BR (APT. #4)	1,170 SF
TOTAL	5,574 SF

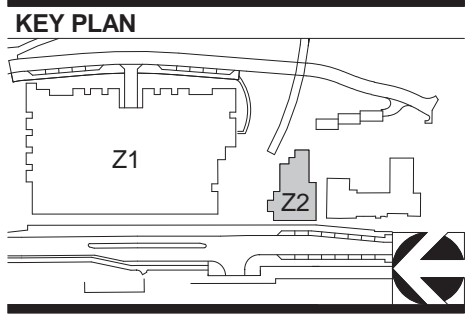
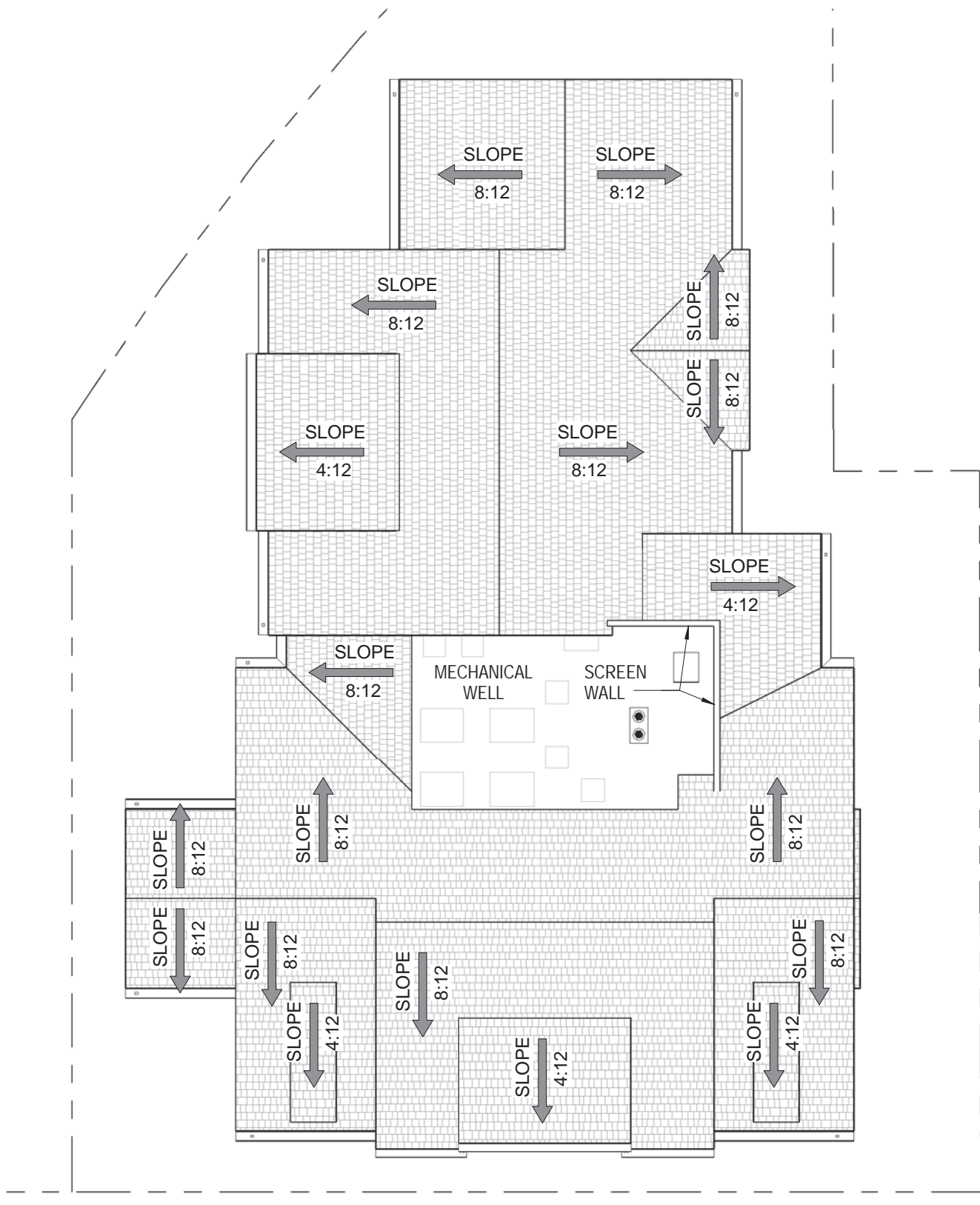


1

SECOND FLOOR PLAN - Z2

1/16" = 1'-0"

HISTORIC MIXED USE BUILDING TYPE



**1** **04 ROOF PLAN - Z2**  
1/16" = 1'-0"

**HISTORIC MIXED USE BUILDING TYPE**





STREET FACADE TRANSPARENCY			
Ground Story		2nd Story	
Story Area:	484 sf	Story Area:	891 sf
Transparency:	260 sf	Transparency:	233 sf
Required:	40%	Required:	20%
Provided:	54%	Provided:	26%

FACADE MATERIALS					
Overall Area of West Elevation:		1,991 sf			
Area of Windows / Doors:		- 684 sf			
Net Area of Elevation:		1,307 sf			
Material	Primary/Secondary	Area (SF)	Percentage	Required	Met?
Brick	Primary	841 sf	64%	80%	Y
Wood Siding	Primary	279 sf	21%		
		1,120 sf	85%		
Cement Fiber Siding & Trim	Secondary	173 sf	14%	<20%	Y
Misc. Elements	Canopies	14 sf	1%		
		187 sf	15%		

VERTICAL INCREMENTS NO GREATER THAN 30 FT.

CHANGE IN ROOF PLANE OR TYPE  
AT EVERY VERTICAL DIVISION

DIMENSIONAL  
ASPHALT SHINGLE  
ROOF, TYP.

METAL RAILING

BRICK 1

BRICK 2

WOOD TRIM &  
HEADERS, TYP.

ALUMINUM  
STOREFRONT,  
TYP.

WOOD SIDING

METAL ENTRY  
CANOPY

SHED  
DORMER

ALUMINUM  
WINDOW, TYP.

FIBER CEMENT  
SIDING

WOOD  
SIDING

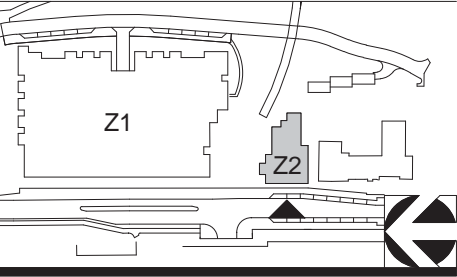
WALL  
SCONCE, TYP.

Z2 - ROOF  
123'-8 3/8"

Z2 - LEVEL 2  
114'-8"

Z2 - LEVEL 1  
100'-0"  
(823.15')

KEY PLAN



1

WEST ELEVATION - Z2

3/32" = 1'-0"

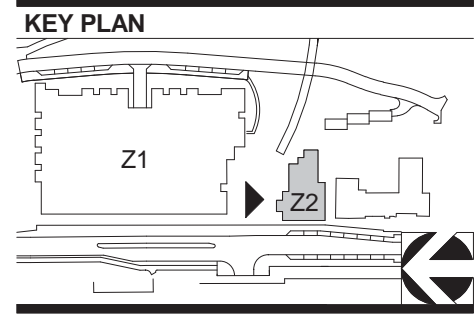
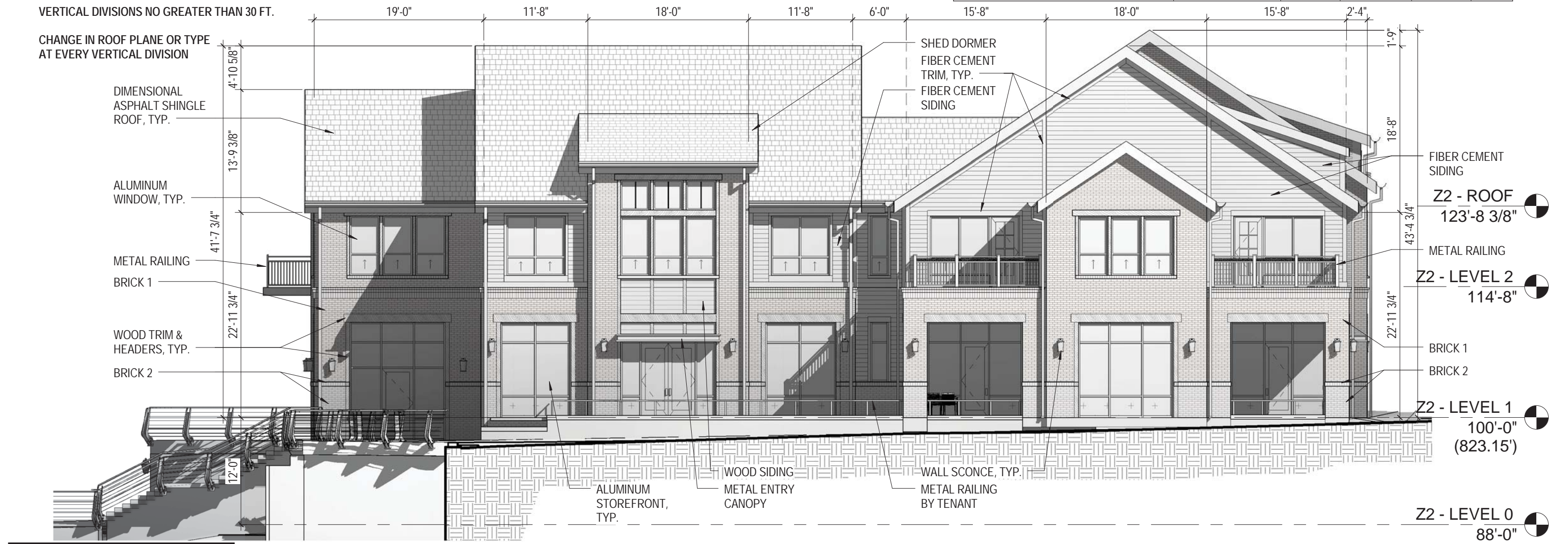
HISTORIC MIXED USE BUILDING TYPE





STREET FACADE TRANSPARENCY					
Ground Story			2nd Story		
Story Area:	737 sf		Story Area:	1,110 sf	
Transparency:	415 sf		Transparency:	391 sf	
Required:	40%		Required:	20%	
Provided:	56%		Provided:	35%	

FACADE MATERIALS					
Overall Area of North Elevation:		3,503 sf			
Area of Windows / Doors:		- 1,236 sf			
Net Area of Elevation:		2,267 sf			
Material	Primary/Secondary	Area (SF)	Percentage	Required	Met?
Brick	Primary	1,296 sf	57%		
Wood Siding	Primary	225 sf	10%		
		1,521 sf	67%	80%	N
Cement Fiber Siding & Trim	Secondary	736 sf	32%		
Misc. Elements	Canopies	10 sf	1%		
		746 sf	33%	<20%	N

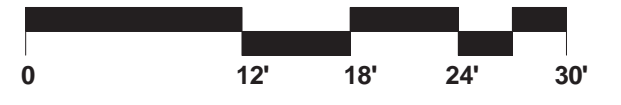


1

# NORTH ELEVATION - Z2

3/32" = 1'-0"

HISTORIC MIXED USE BUILDING TYPE



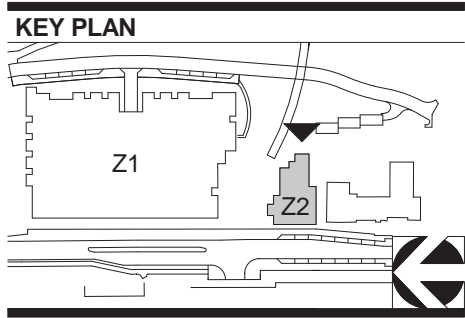


STREET FACADE TRANSPARENCY					
Ground Story		2nd Story		Basement / Lower Level	
Story Area:	484 sf	Story Area:	670 sf	Story Area:	268 sf
Transparency:	144 sf	Transparency:	178 sf	Transparency:	63 sf
Required:	40%	Required:	20%	Required:	20%
Provided:	30%	Provided:	26%	Provided:	24%

FACADE MATERIALS					
Overall Area of East Elevation:		2,773 sf			
Area of Windows / Doors:		- 743 sf			
Net Area of Elevation:		2,030 sf			
Material	Primary/Secondary	Area (SF)	Percentage	Required	Met?
Brick	Primary	1,348 sf	66%		
Wood Siding	Primary	116 sf	6%		
		1,464 sf	72%	80%	N
Cement Fiber Siding & Trim	Secondary	566 sf	28%		
Misc. Elements	Canopies	0 sf	0%		
		566 sf	28%	<20%	N

VERTICAL INCREMENTS NO GREATER THAN 30 FT.

CHANGE IN ROOF PLANE OR TYPE  
AT EVERY VERTICAL DIVISION



1

**EAST ELEVATION - Z2**

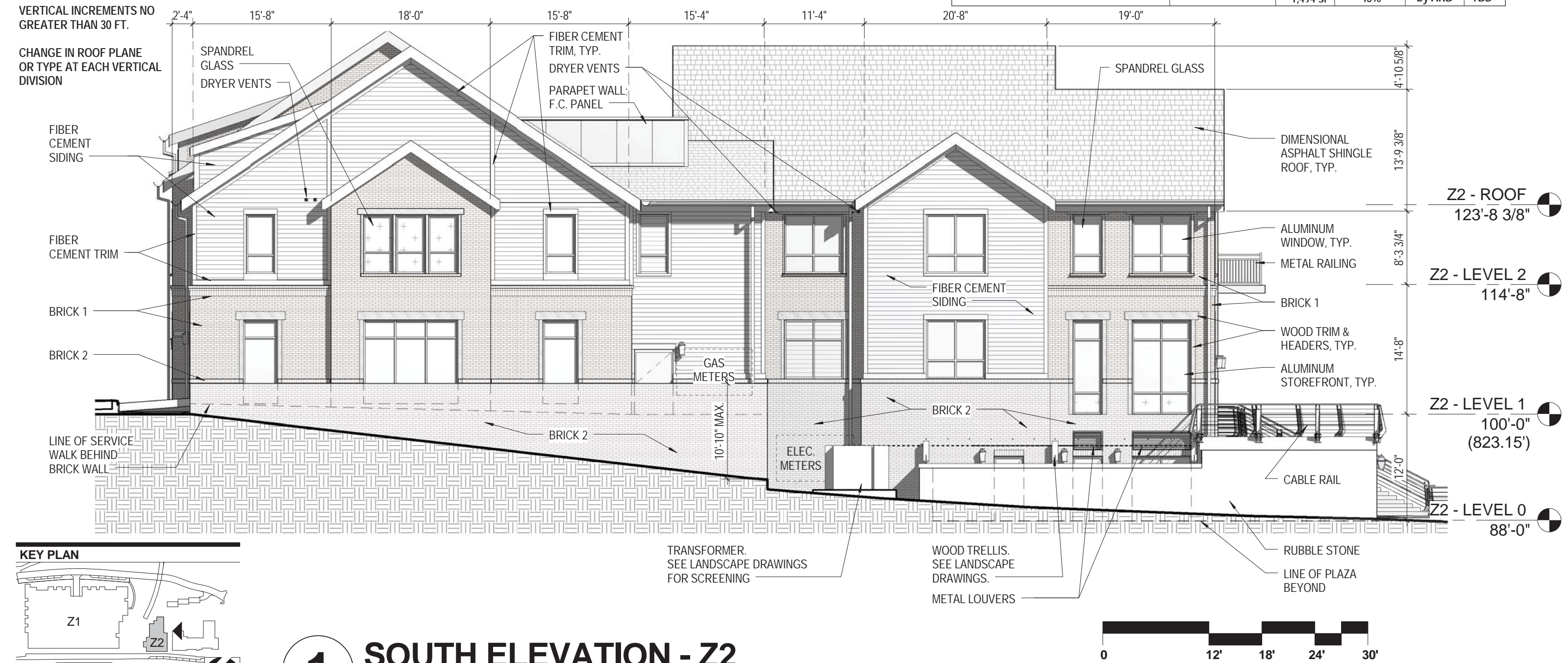
3/32" = 1'-0"

**HISTORIC MIXED USE BUILDING TYPE**



NON-STREET FACADE TRANSPARENCY					
Ground Story		2nd Story		Basement / Lower Level	
Story Area:	1,737 sf	Story Area:	1,099 sf	Story Area:	579 sf
Transparency:	244 sf	Transparency:	178 sf	Transparency:	73 sf
Required:	15%	Required:	15%	Required:	15%
Provided:	14%	Provided:	16%	Provided:	12%

FACADE MATERIALS					
Overall Area of South Elevation:		4,059 sf			
Area of Windows / Doors:		- 723 sf			
Net Area of Elevation:		3,336 sf			
Material	Primary/Secondary	Area (SF)	Percentage	Required	Met?
Brick	Primary	1,733 sf	52%		
Wood Siding	Primary	109 sf	3%		
		1,842 sf	55%	by ARB	TBD
Cement Fiber Siding & Trim	Secondary	1,404 sf	42%		
Misc. Elements	Louvers / Mtl. Panel	90 sf	3%		
		1,494 sf	45%	by ARB	TBD



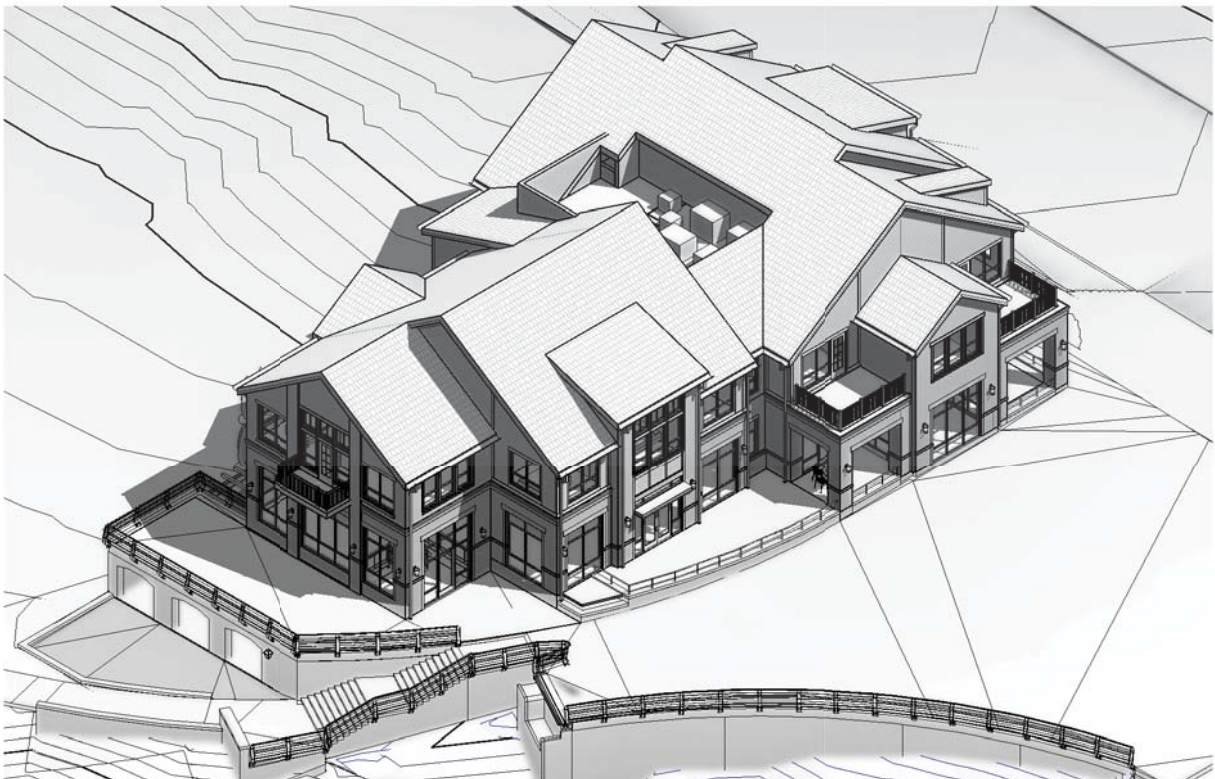
1 SOUTH ELEVATION - Z2  
3/32" = 1'-0"

HISTORIC MIXED USE BUILDING TYPE





NORTHWEST AXON VIEW



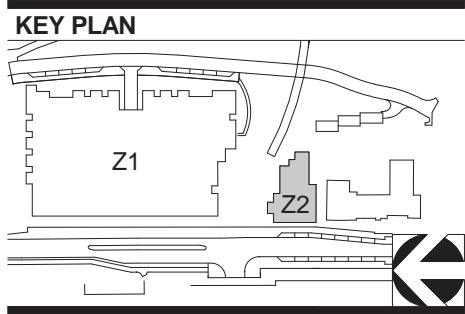
NORTHEAST AXON VIEW



SOUTHWEST AXON VIEW



SOUTHEAST AXON VIEW



**HISTORIC MIXED USE BUILDING TYPE**





- MATERIAL LEGEND**
- 1. ASPHALT SHINGLES
  - 2. BRICK
  - 3. FIBER CEMENT
  - 4. WOOD SIDING & TRIM
  - 5. ALUMINUM WINDOWS
  - 6. ALUMINUM CANOPY
  - 7. METAL RAILING
  - 8. CABLE RAIL
  - 9. RUBBLE STONE

**PROPOSED EXTERIOR MATERIALS**

BRICK #1:  
*General Shale Morning Smoke, or similar*

BRICK #2:  
*Glen Gery Valdosta, or similar*

WOOD SIDING & TRIM:  
*Natural red cedar*  
*Stain color TBD with Staff*

FIBER CEMENT SIDING:  
*Sherwin Williams SW 7613 Aqua-Sphere, or similar*

FIBER CEMENT TRIM:  
*Sherwin Williams SW 7566 Westhighland White, or similar*

DIMENSIONAL ASPHALT SHINGLES:  
*CertainTeed Landmark Series "Weathered Wood", or similar*

GLAZED STOREFRONT SYSTEM:  
*Tubelite Dark Bronze - DB*  
*Class 1 Anodized Finish, Dark Range*

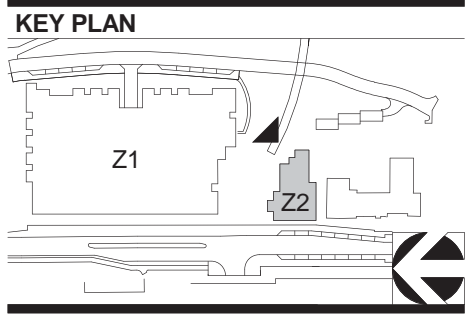
ALUMINUM WINDOWS:  
*Linotec Dark Bronze, ANO-303*

ALUMINUM CANOPY:  
*Finish to match Storefront System*

METAL GUARDRAIL:  
*Paint to match Storefront System*

EXTERIOR LIGHT FIXTURE:  
*Kichler Atwood 49073BSTFL (Brown Stone), or similar*

**1 NE VIEW**



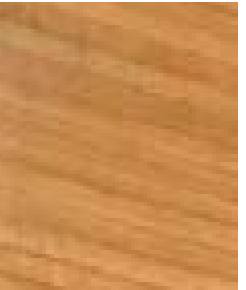
EXTERIOR LIGHT  
FIXTURE



BRICK 1



BRICK 2 (BASE)



WOOD SIDING



FIBER CEMENT  
SIDING & TRIM



DIMENSIONAL ASPHALT  
SHINGLE ROOF

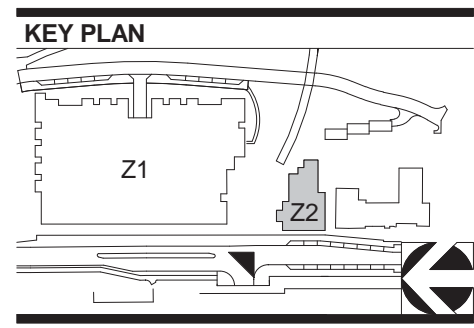
**HISTORIC MIXED USE BUILDING TYPE**



- MATERIAL LEGEND
- 1. ASPHALT SHINGLES
  - 2. BRICK
  - 3. FIBER CEMENT
  - 4. WOOD SIDING & TRIM
  - 5. ALUMINUM WINDOWS
  - 6. ALUMINUM CANOPY
  - 7. METAL RAILING
  - 8. CABLE RAIL
  - 9. RUBBLE STONE



1 NW VIEW



HISTORIC MIXED USE BUILDING TYPE





**1** **ELEVATION** NORTH HIGH STREET - STREETSCAPE  
1" = 40'-0"

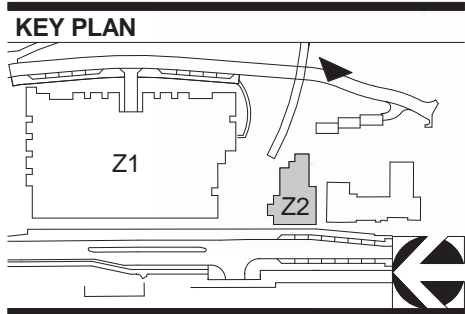
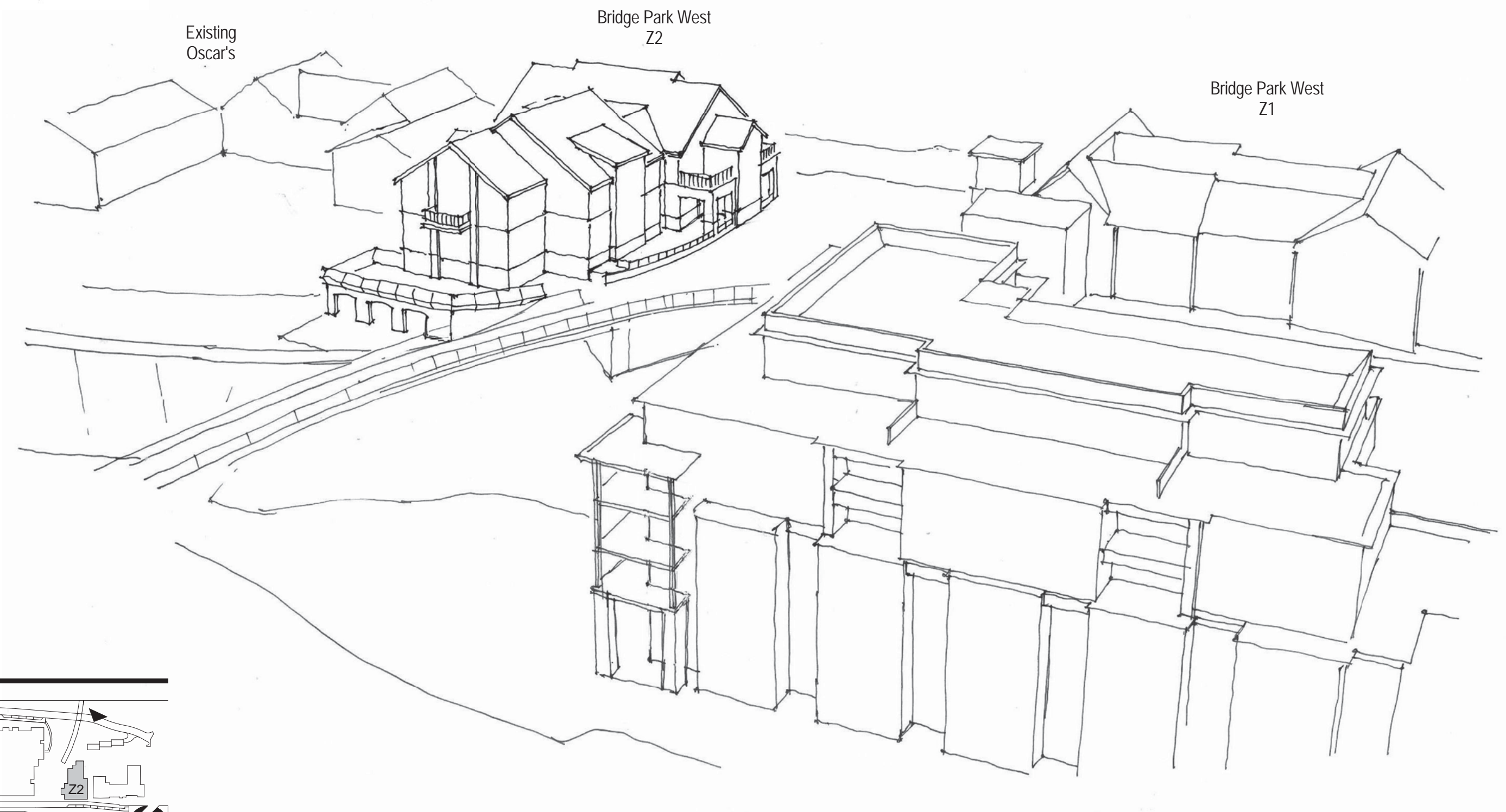


**2** **ELEVATION** NORTH RIVERVIEW STREET - STREETSCAPE  
1" = 40'-0"

HISTORIC MIXED USE BUILDING TYPE



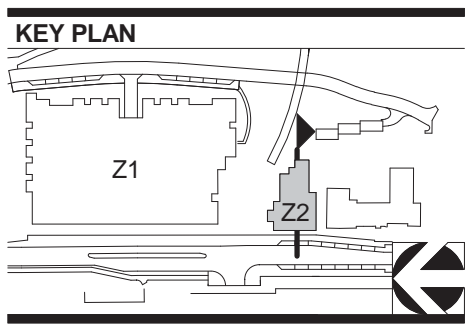
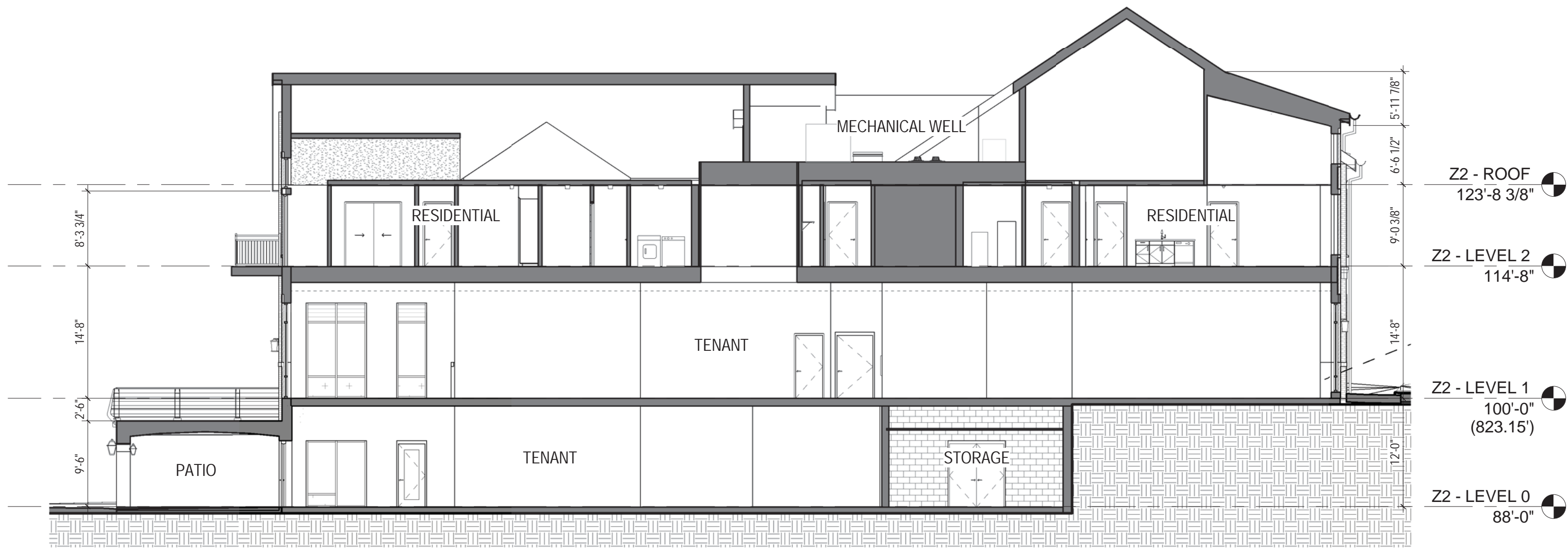
BRIDGE PARK  
DUBLIN, OH



HISTORIC MIXED USE BUILDING TYPE

02-21-2017



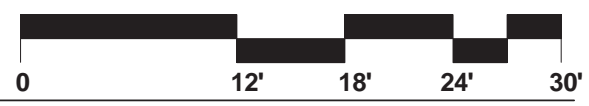


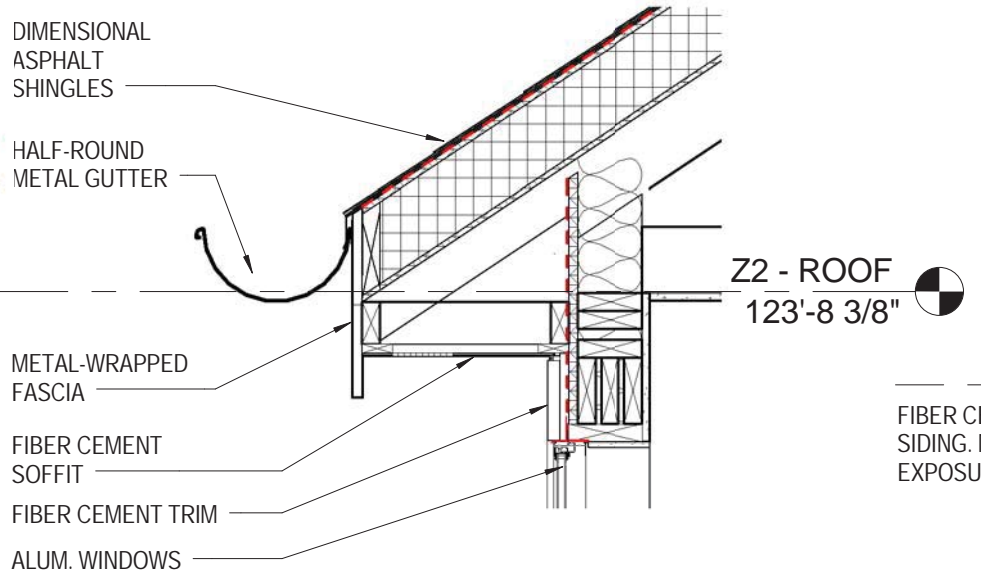
1

**E/W SECTION - Z2**

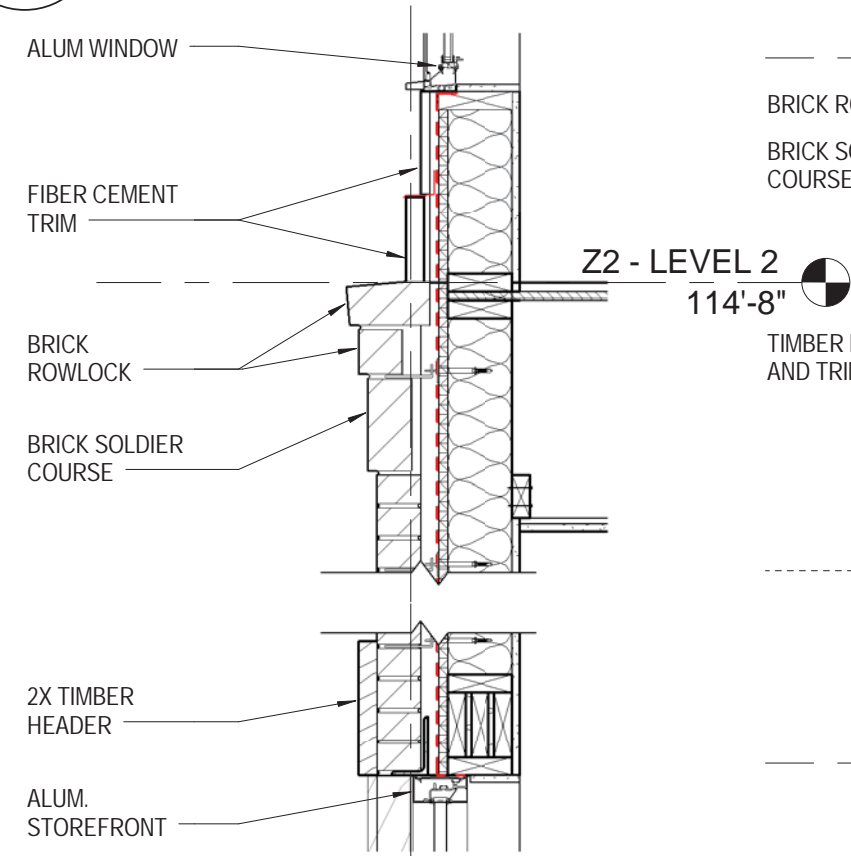
3/32" = 1'-0"

**HISTORIC MIXED USE BUILDING TYPE**

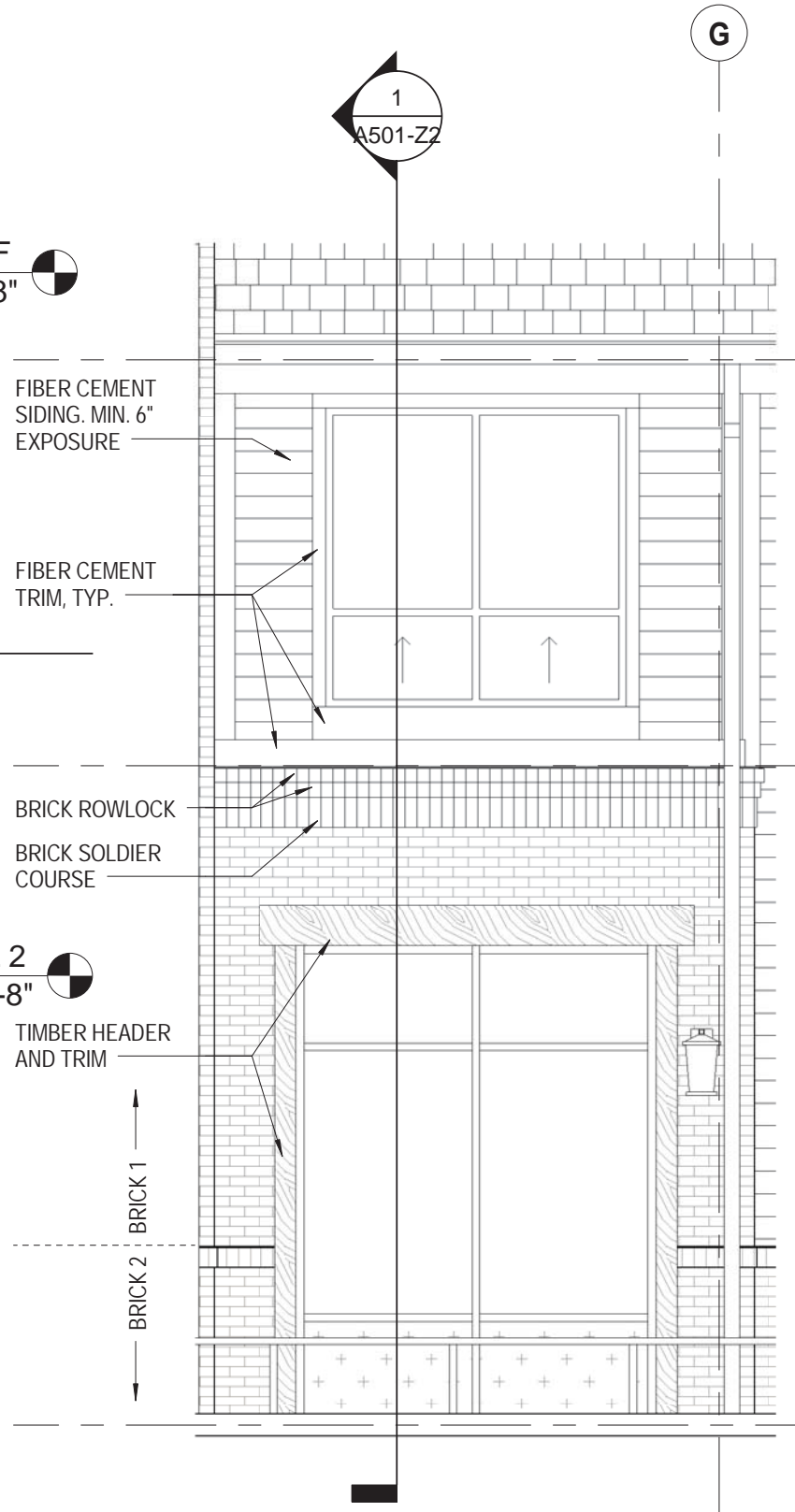




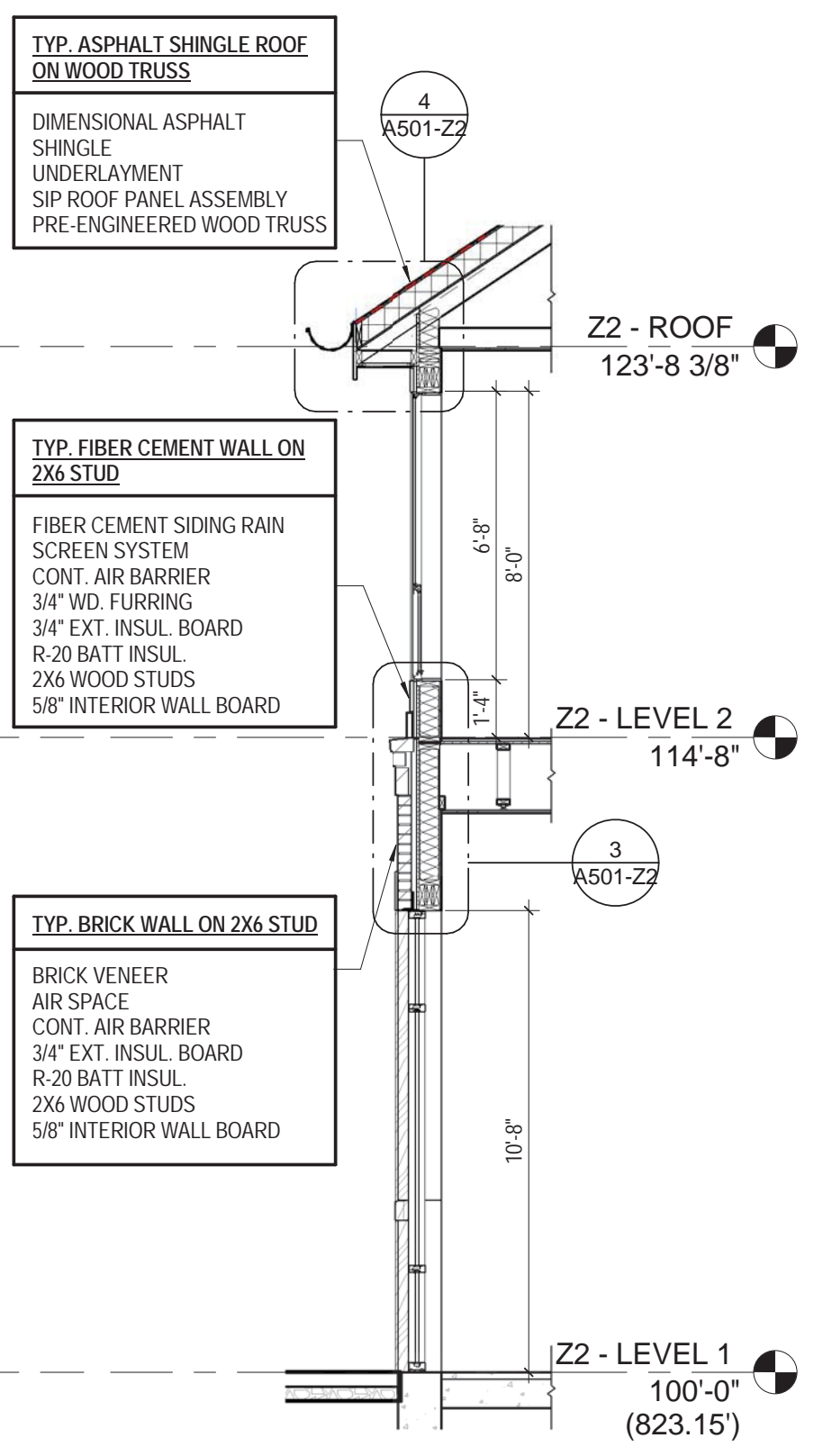
**4 DETAIL HEAD DETAIL**  
3/4" = 1'-0" REF: 1/ A501-Z2



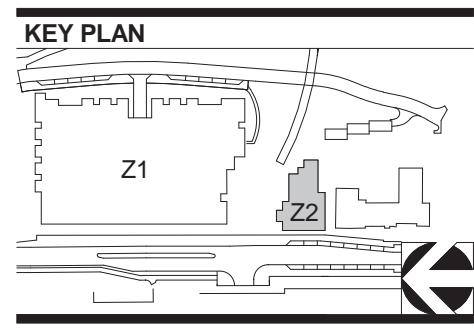
**3 DETAIL SILL/HEAD DETAIL**  
3/4" = 1'-0" REF: 1/ A501-Z2



**2 ELEVATION Z2 WINDOW ELEVATION**  
1/4" = 1'-0"

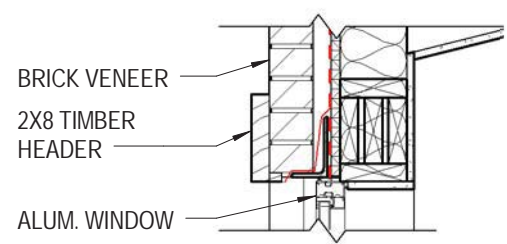


**1 SECTION Z2 WINDOW SECTION**  
1/4" = 1'-0"

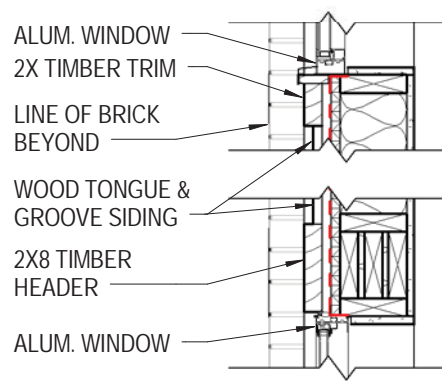


**HISTORIC MIXED USE BUILDING TYPE**

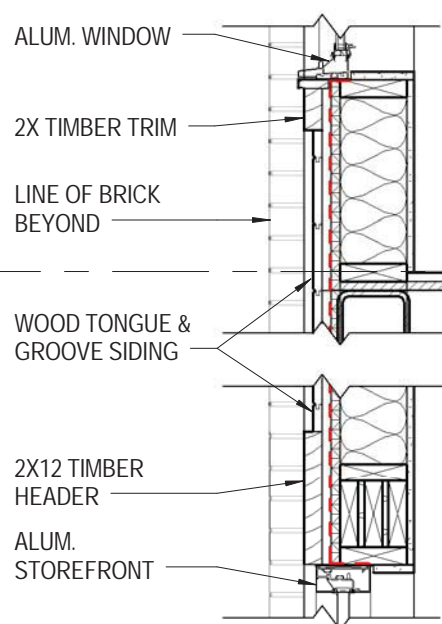




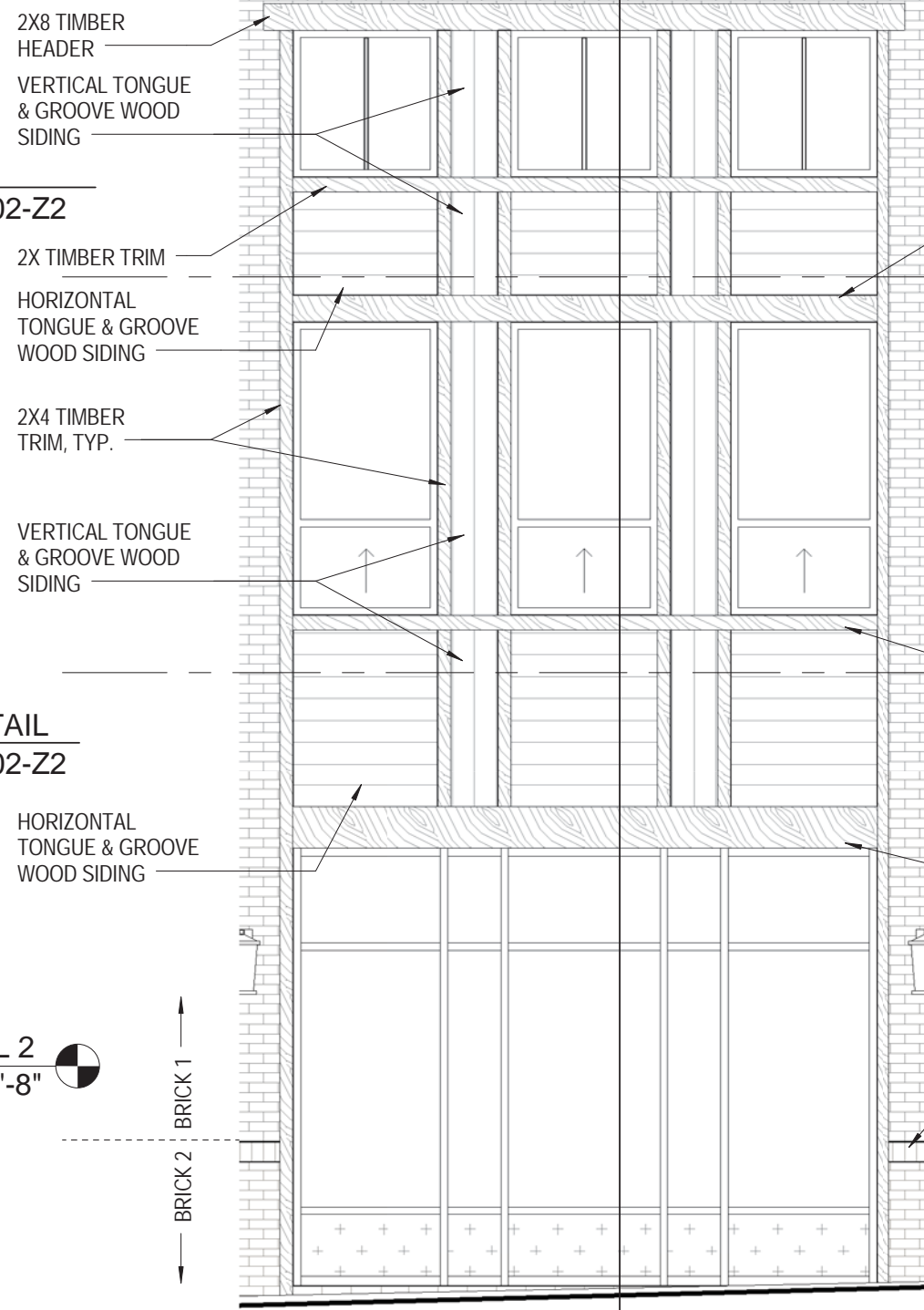
**5** **DETAIL** HEAD  
3/4" = 1'-0" REF: 1/ A502-Z2



**4** **DETAIL** SILL/HEAD DETAIL  
3/4" = 1'-0" REF: 1/ A502-Z2



**3** **DETAIL** SILL/HEAD DETAIL  
3/4" = 1'-0" REF: 1/ A502-Z2

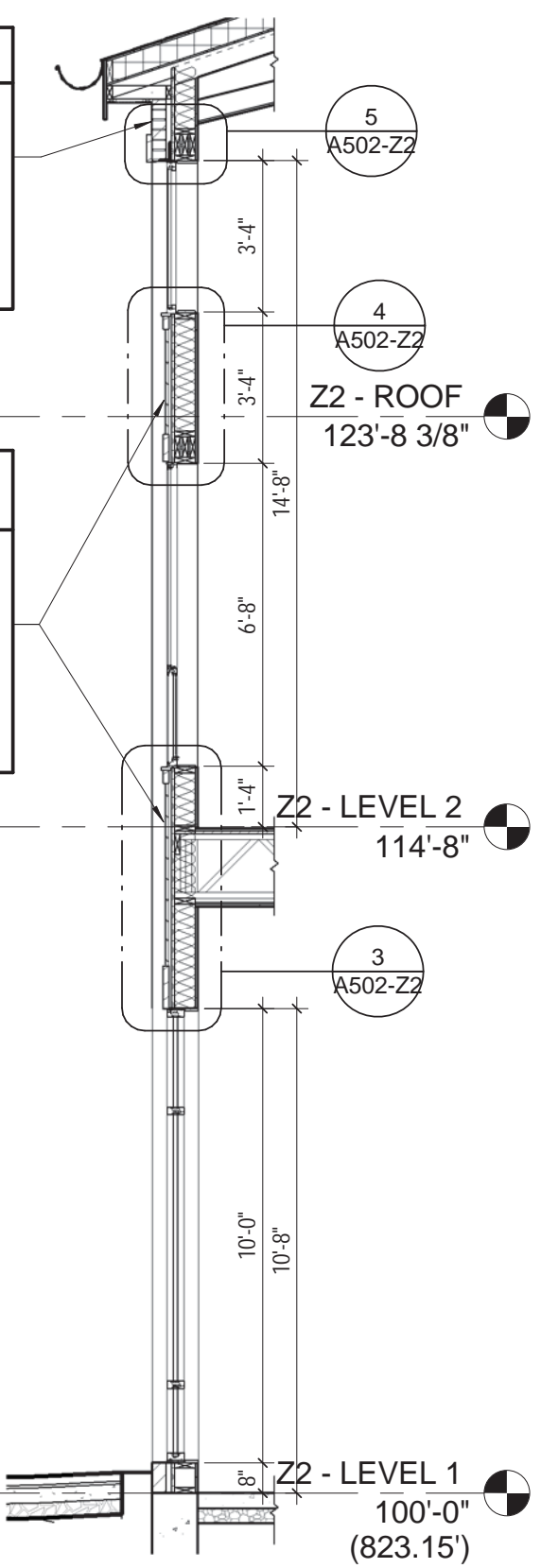


**2** **ELEVATION** Z2 WINDOW ELEVATION  
1/4" = 1'-0"

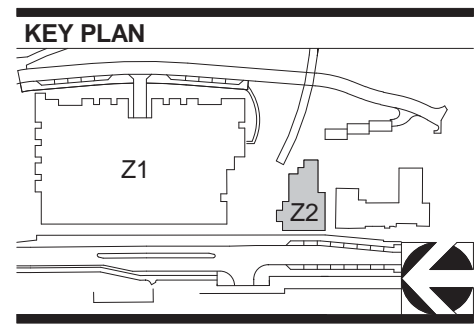
HISTORIC MIXED USE BUILDING TYPE

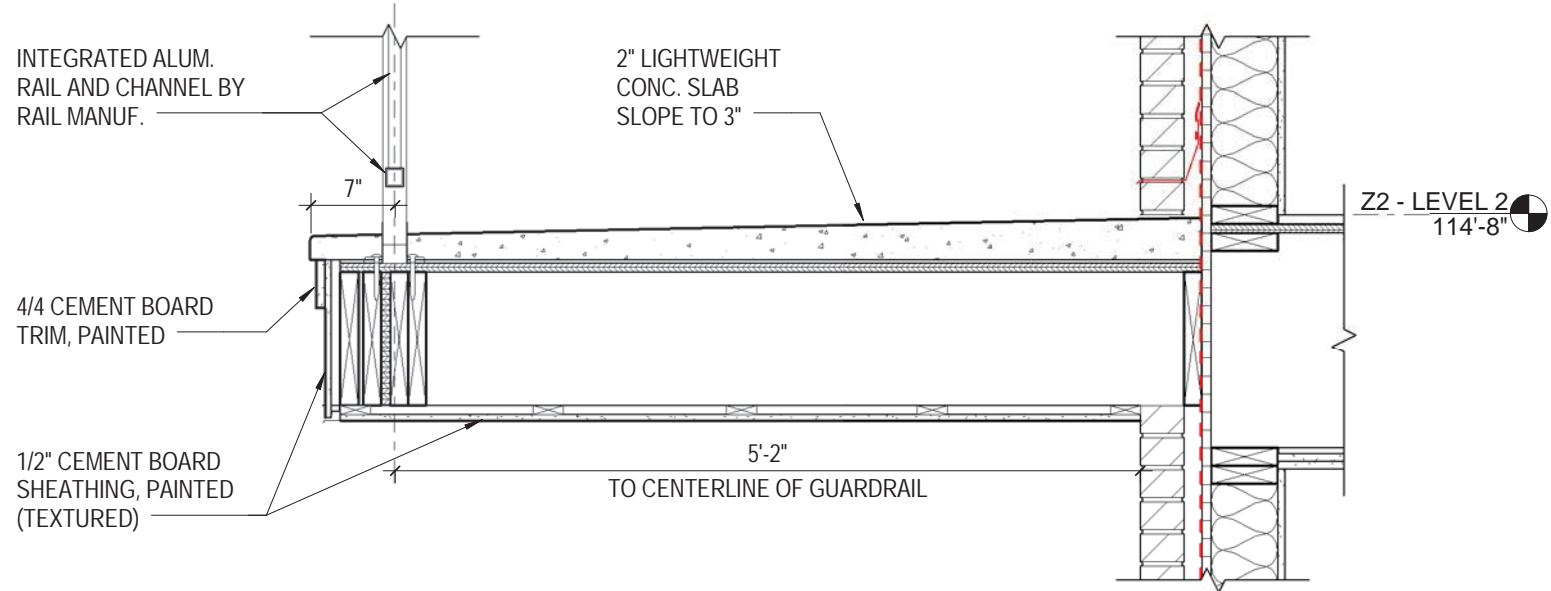
**TYP. BRICK WALL ON 2X6 STUD**  
BRICK VENEER  
AIR SPACE  
CONT. AIR BARRIER  
3/4" EXT. INSUL. BOARD  
R-20 BATT INSUL.  
2X6 WOOD STUDS  
5/8" INTERIOR WALL BOARD

**TYP. WOOD SIDING WALL ON 2X6 STUD**  
1X6 WOOD TONGUE & GROOVE  
SIDING RAIN SCREEN SYSTEM  
3/4" WD. FURRING  
CONT. AIR BARRIER  
3/4" EXT. INSUL. BOARD  
R-20 BATT INSUL.  
2X6 WOOD STUDS  
5/8" INTERIOR WALL BOARD

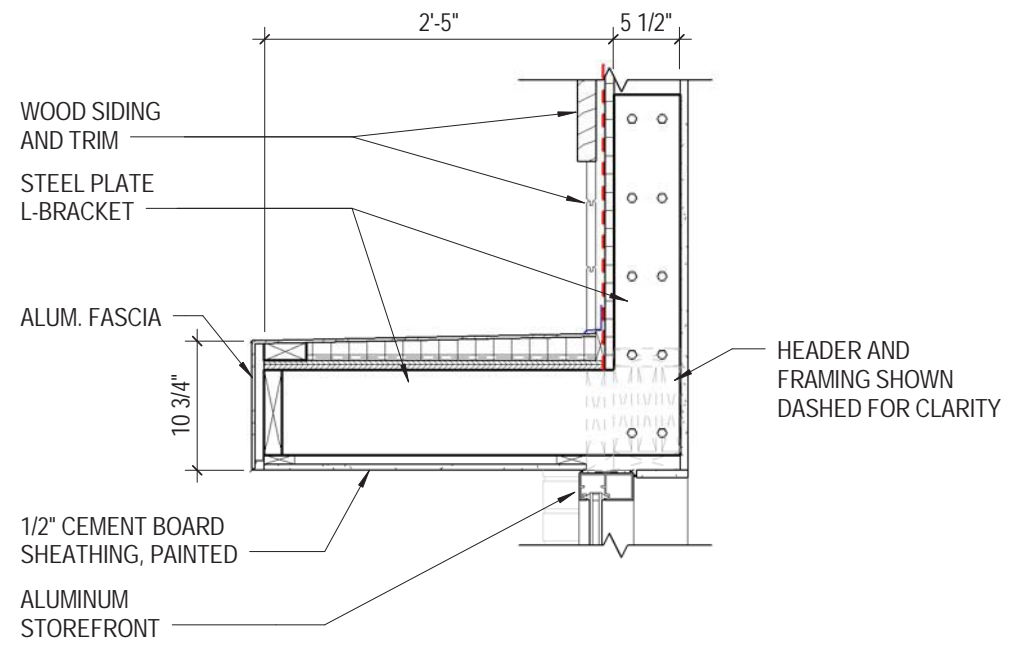
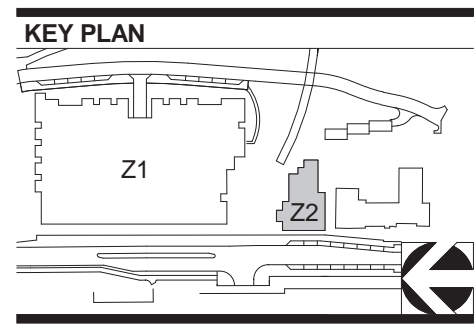


**1** **SECTION** Z2 WINDOW SECTION  
1/4" = 1'-0"

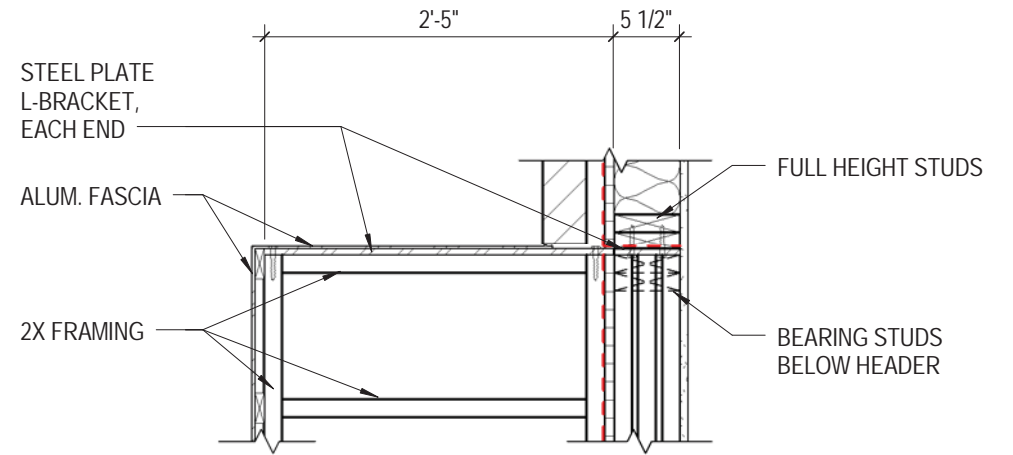




**2** **DETAIL** CANTILEVERED BALCONY  
3/4" = 1'-0"



**SECTION**



**PLAN**

**1** **DETAIL** CANTILEVERED METAL CANOPY ATTACHMENT  
3/4" = 1'-0"

HISTORIC MIXED USE BUILDING TYPE



## LUMINAIRE TYPE G1

**Precision**  
**B-K LIGHTING**  
Integral Transformer (TR)

**PROJECT:** \_\_\_\_\_  
**TYPE:** \_\_\_\_\_  
**CATALOG NUMBER:** B-HP2-LED-TR-604-NSP-A9-K-12-11-MT  
**SOURCE:** \_\_\_\_\_  
**NOTES:** \_\_\_\_\_

**CATALOG NUMBER LOGIC**

Example: B - HP2 - LED - TR - 604 - NSP - A9 - K - 12 - 11 - MT - AH

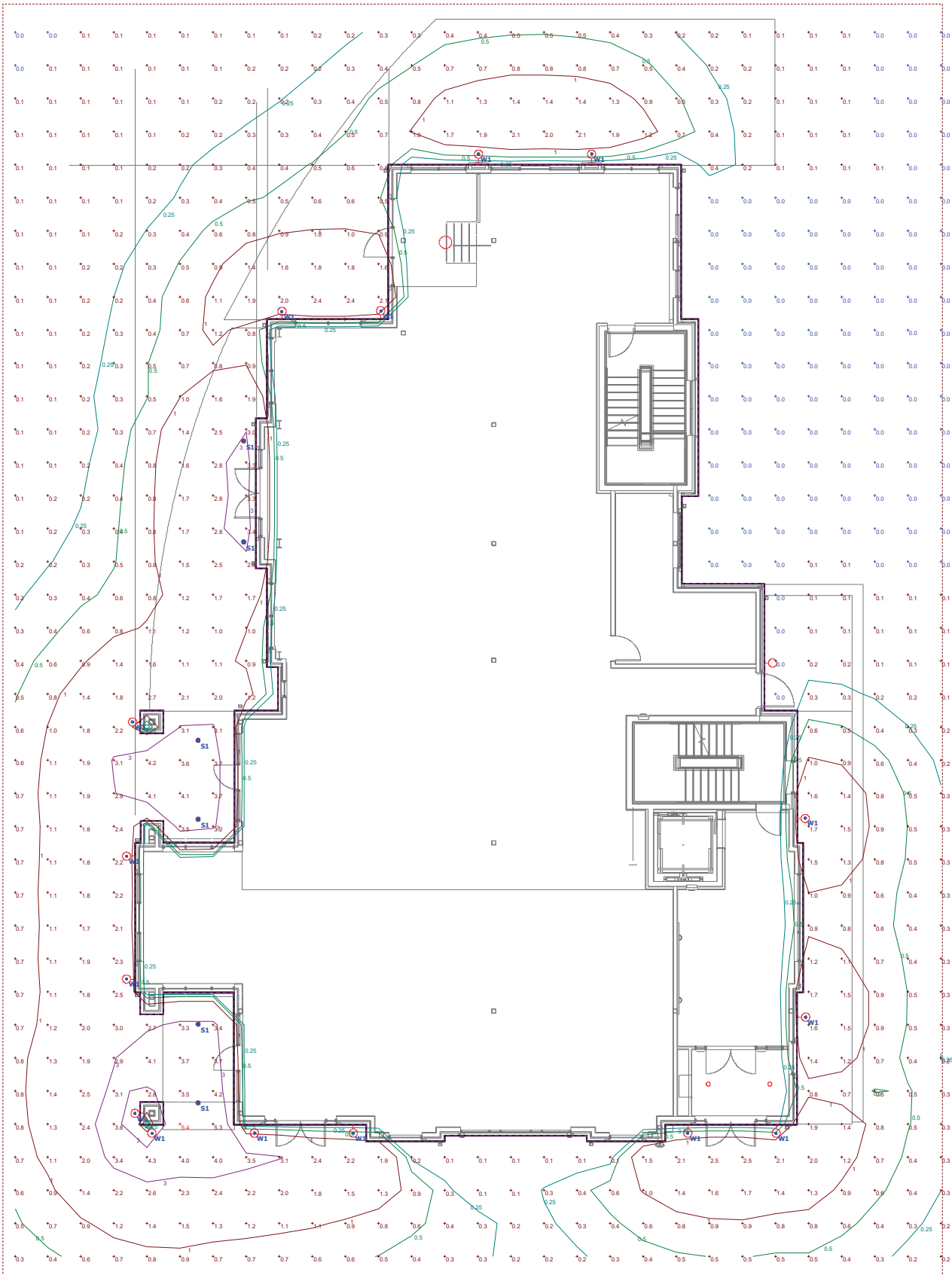
**Material:** \_\_\_\_\_  
**Faceplate:** \_\_\_\_\_  
**Optical:** \_\_\_\_\_  
**LED Type:** \_\_\_\_\_  
**Options:** \_\_\_\_\_  
**Adjust-e-Lume® Output Intensity:** \_\_\_\_\_  
**Finish:** \_\_\_\_\_  
**Lens Type:** \_\_\_\_\_  
**Shielding:** \_\_\_\_\_  
**Input Voltage:** \_\_\_\_\_  
**Options:** \_\_\_\_\_  
**DRIVER DATA:** \_\_\_\_\_  
**LM79 DATA:** \_\_\_\_\_  
**L70 DATA:** \_\_\_\_\_  
**OPTICAL DATA:** \_\_\_\_\_  
**B-K LIGHTING**

**Precision**  
**B-K LIGHTING**  
Integral Transformer (TR)

**PROJECT:** \_\_\_\_\_  
**TYPE:** \_\_\_\_\_  
**FACEPLATE:** \_\_\_\_\_  
**BOTTOM VIEW:** \_\_\_\_\_

**SPECIFICATIONS**

**General Information:** \_\_\_\_\_  
**Optics:** \_\_\_\_\_  
**Material:** \_\_\_\_\_  
**Finish:** \_\_\_\_\_  
**LED Type:** \_\_\_\_\_  
**Options:** \_\_\_\_\_  
**Adjust-e-Lume® Output Intensity:** \_\_\_\_\_  
**Finish:** \_\_\_\_\_  
**Lens Type:** \_\_\_\_\_  
**Shielding:** \_\_\_\_\_  
**Input Voltage:** \_\_\_\_\_  
**Options:** \_\_\_\_\_  
**DRIVER DATA:** \_\_\_\_\_  
**LM79 DATA:** \_\_\_\_\_  
**L70 DATA:** \_\_\_\_\_  
**OPTICAL DATA:** \_\_\_\_\_  
**B-K LIGHTING**



Plan View  
Scale - 1" = 8ft

## LUMINAIRE TYPE S1

### HALO

**LED DRIVER**

- Driver is a 120V input, high efficiency, dimmable electronic power supply providing DC power to the LED array.
- Driver features high power factor, low THD, and has integral thermal protection in the event of over temperature or internal failure.
- Driver is replaceable if it should be required.

**DIMMING**

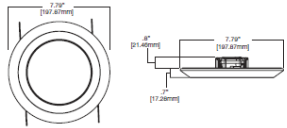
- Designed for continuous dimming capability to nominally 8% with many 120V Leading Edge (LE) and Trailing Edge (TE) phase control dimmers. Dimming to 8% is best assured using dimmers with low end trim adjustment. Consult dimmer manufacturer for compatibility and conditions of use. (Note some dimmers require a neutral in the wallbox.)

**COMPLIANCE**

- cULus Listed ceiling and wall
- cULus Damp Location listed ceiling and wall
- cULus Wet Location listed, ceiling only (shower rated)
- Suitable for use in closets compliant with NFPA® 70, NEC® Section 410.16 (A)(3) and 410.16 (C)(8)
- SLD may be used in compatible electrical junction boxes in direct contact with insulation including spray foam insulation
- May be installed in IC recessed housings in direct contact with spray foam insulation. Refer to NEMA L8D 67-2013
- UL Classified when used in retrofit with listed housings (See Housing Compatibility)
- EMC/RFI meets FCC 47CFR Part 15 Class B limits, and is suitable for use in residential and commercial installations

- Airtight certified per ASTM E283 (not exceeding 2.0 CFM under 57 Pascals pressure difference)
- 90 CRI. Can be used to comply with California Title 24 High Efficacy requirements. Certified to California Title 24 Appliance Efficiency Database
- 90 CRI. Can be used to comply with California Title 24 Non-Residential Lighting Controls requirements as a LED luminaire.
- Can be used for International Energy Conservation Code (IECC) and Washington State Energy Code high efficiency luminaire compliance
- ENERGY STAR® certified luminaire - consult ENERGY STAR® Certified Product List
- Contains no mercury on lead and RoHS compliant
- Photometric testing in accordance with IES LM-79
- Lumen maintenance projections in accordance with IES LM-80 and TM-21

### DIMENSIONS



### ORDERING INFORMATION

Model	Color Rendering Index	Color Temperature (°C)	Finish	Accessories
SLD6068-6" Surface LED Downlight, 150W 80 Series	80-90 CRI	27-3000K	WH-White	Downlight Trim
	80-90 CRI	35-4000K		For use with SLD for a designer trim
				SLD6068-6" SLD 60 Series
				SLD6068-6" SLD 60 Series
				SLD6068-6" SLD 60 Series
				SLD6068-6" SLD 60 Series
				SLD6068-6" SLD 60 Series
				SLD6068-6" SLD 60 Series
				SLD6068-6" SLD 60 Series
				SLD6068-6" SLD 60 Series

## LUMINAIRE TYPE W1

Atwood Collection  
Atwood 1 Light Outdoor Wall in BST  
49073BST (Brown Stone)



### Dimensions

Height	17.75"
Width	10.00"

### Alternate Lamps

Lamp Included	Bulb Listing	Light Source	Max Wattage/Range	Bulb Product ID	Dimming
No	Hybrid	CFL	30-50W		

Project Name: \_\_\_\_\_  
Location: \_\_\_\_\_  
Type: **W1**  
City: \_\_\_\_\_  
Comments: Lamp: Sylvania LED15A21/DIM/O/827/G4

### Ordering Information

Product ID	49073BST
Finish	Brown Stone
Available Finishes	BST, BST
Collection	Atwood Collection

### Dimensions

Extension	11.00"
Height from center of Wall opening	3.25"
Base Backplate	5.75 X 9.50
Weight	9.00 LBS

### Specifications

Material	Cast Aluminum
Glass Description	Light Umber Mist

### Electrical

Voltage	120V
---------	------

### Qualifications

Safety Rated	Wet
Warranty	www.kichler.com/warranty

### Primary Lighting

Light Source	Incandescent
Lamp Included	Not Included
Number of Lights/LEDs	1
Max or Nominal Watt	150W
Socket Wire	150
Socket Wire	Medium
Lamp Type	A21

**Kichler**  
7711 East Pleasant Valley Road  
Cincinnati, Ohio 45215-0115  
Tel: 800.556.5738 or kichler.com

**Notes:**  
1) Information provided is subject to change without notice.  
2) Information is provided for reference only.  
3) Information is provided for reference only.  
4) Information is provided for reference only.

**KICHLER**

Statistics	Description	Symbol	Avg	Max	Min	Max/Min	Avg/Min
Calc. Zone #1	+	0.8 fc	5.4 fc	0.0 fc	N/A	N/A	N/A

The specified luminaire type "W1" does not have a manufacturer provide photometric file, so we chose a similar fixture to approximate light levels.

Symbol	Label	Quantity	Manufacturer	Catalog Number	Description	Lamp	Number Lamps	Filename	Lumens Per Lamp	Light Loss Factor	Wattage
○	W1	15	Lithonia Lighting	OVT 1501 120	VAPOR TIGHT WITH GLASS GLOBE AND CAST ALUMINUM HOUSING	ONE 100-WATT EQUIVALENT COATED A21 LED	1	JELLY JAR with 15W LED (100W) ies	1600	0.92	15
○	S1	6	EATON - HALO (FORMER COOPER LIGHTING)	SLD612927WH	HALO 6 INCH SURFACE LED DOWNLIGHT	LED 90CRI / 2700K CCT ABSOLUTE PHOTOMETRY IS BASED ON CALIBRATION FACTORS CREATED USING LAB LUMEN STANDARDS IN GONIOPHOTOMETER WITH TEST DISTANCE OF 28.75 FEET	1	SLD612927WH.ies	880	0.92	14.8

Designer  
MECI  
Date  
3/1/2017  
Scale  
As Noted  
Drawing No.  
Summary