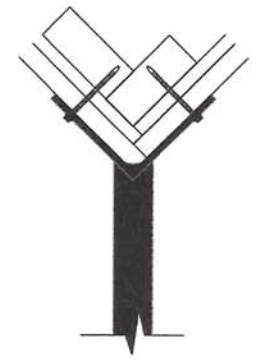


BLADE SIGN

- (2) 30" X 36" X 1-1/2" SINGLE FACE ROUTED HDU SANDBLASTED WOODGRAIN BACKGROUND
- LOGO AND EST. 1950 = 11-1/2" X 20"
- JOHNSON'S REAL ICE CREAM = 9-1/2" X 31"
- RAISED COPY GRAPHICS & 1-1/2" BORDER
- BOARDER & BACKGROUND TO MATCH PANTONE 7499 @ 90% BLACK COPY & GRAPHICS
- FACES MOUNTED BACK TO BACK TO ALUMINUM CENTER PLATE
- CUSTOM 9" X 4-1/5" X 4-1/2" X 1/4" ALUMINUM MOUNTING BRACKET
- 3" X 1-1/2" X 48" ALUMINUM TUBE PAINTED BLACK
- FASTENED AT 45 DEGREE ANGLE TO NORTHEAST CORNER OF ELEVATION
- WITH (4) 3/8" WOOD SCREWS WITH 1" MINIMUM EMBEDMENT
- (2) CUSTOM MOUNTING BRACKETS
- CHAINS & HARDWARE PAINTED BLACK
- (2) GOOSENECK LIGHTS ATTACHED TO HANG BAR PAINTED BLACK

BOARDER & BACKGROUND TO MATCH PANTONE 7499 @ 90%
MOUNTING BRACKET HARDWARE COPY AND GRAPHICS PAINTED SATIN BLACK



ALL SISTER'S SWEET SHOPPE WINDOW AND EXTERIOR SIGNAGE WILL BE REMOVED



THE DESIGN AND/OR ENGINEERING CONCEPTS WITHIN THIS DOCUMENTATION WILL REMAIN THE EXCLUSIVE PROPERTY OF COLUMBUS SIGN COMPANY, UNLESS APPROVED AND ACCEPTED THROUGH WRITTEN AGREEMENT BY CLIENT. LABEL ON THESE DRAWINGS AND COLUMBUS SIGN COMPANY. A SEPARATE PURCHASE AGREEMENT WILL BE REQUIRED TO RELEASE THE RIGHTS OF THIS DRAWING ILLUSTRATIONS WITHIN THIS DOCUMENT. ALL COLOR AND ILLUSTRATIVE TECHNIQUES ARE FOR PRESENTATION ONLY.

JOHNSON'S ICE CREAM
55 W. Bridge St. Dublin OH
Gary\CHRIS\Johnsons Ice Cream\PDF

Project Layout
Approved _____
Approved as Noted

UL Yes No
Install per NEC 600
- Grounding
- Bonding

SALES DESIGN G HORN
DWG # 217-042
JOB # 000

03302017
01.3

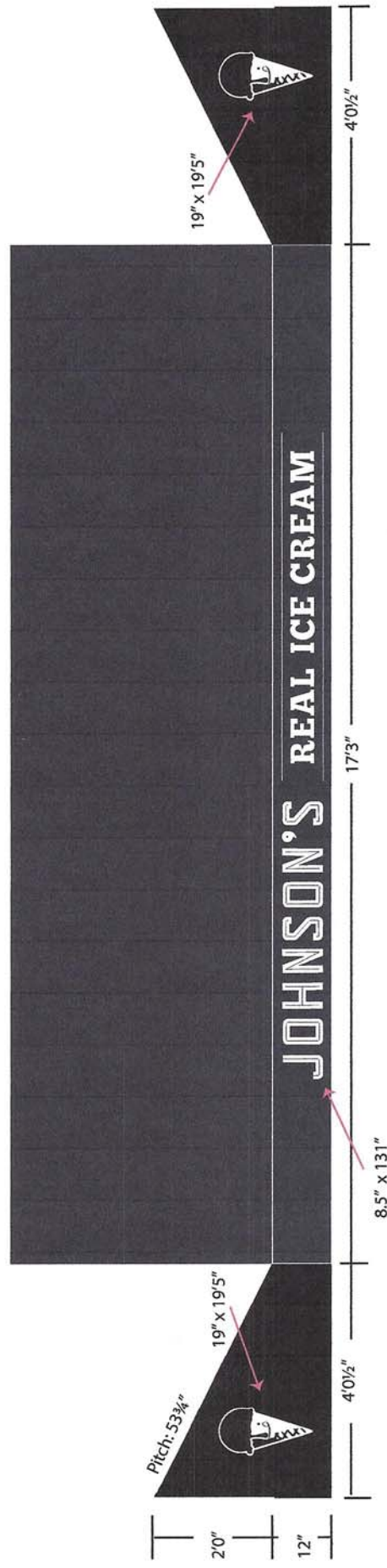
1515 E. Fith Ave. Columbus OH 43219 Phone: 614.252-3133 Fax: 614.252.2494 www.ColumbusSign.com

FILE COPY



RECEIVED
 17-030MSP
 APR 03 2017
 CITY OF DUBLIN
 PLANNING

FILE COPY



This file will be used to generate the graphics on your awning.
 Review this mock-up carefully before giving us your approval.

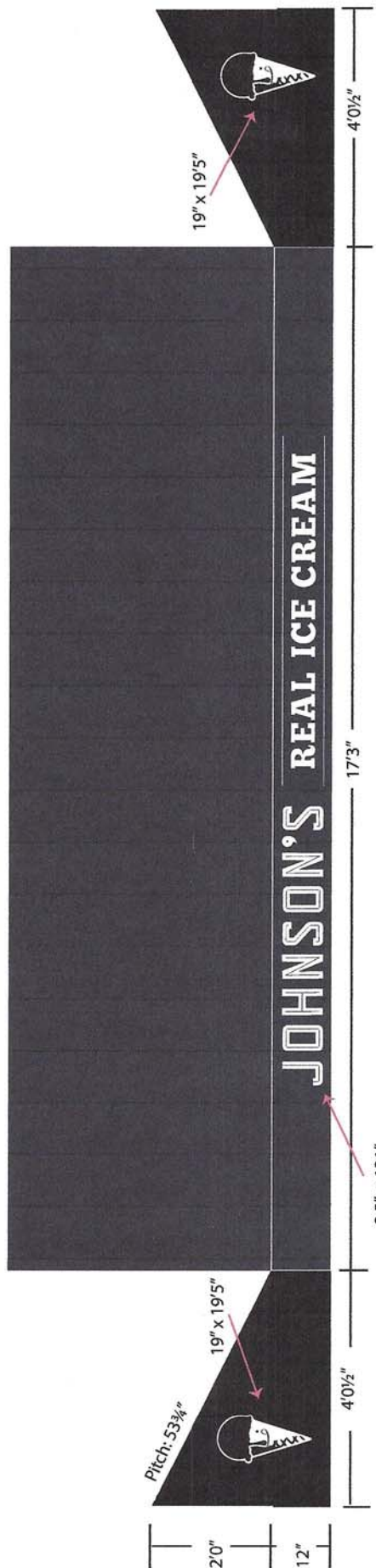
Approval: _____
 Date: _____

• Fabric: Black Firesist
 • Graphics: Cream

Job Title:
 Johnson's Real Ice Cream

capitalcityawning.com
 614-221-5404
 Fax: 614-365-9420

CANVAS PRODUCTS
 Salesperson: BG



RECEIVED
 17-030MSP
 APR 03 2017
 CITY OF DUBLIN
 PLANNING

FILE COPY

This file will be used to generate the graphics on your awning.
 Review this mock-up carefully before giving us your approval.

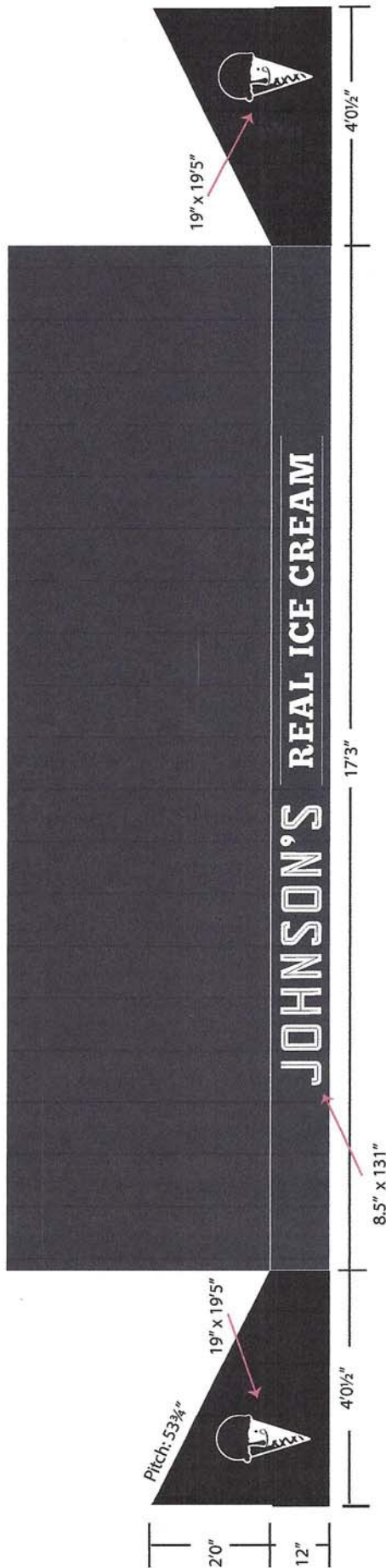
Approval: _____
 Date: _____

Job Title:
 Johnson's Real Ice Cream

• Fabric: Black Firesist
 • Graphics: Cream

Capital City Awning
 CANVAS PRODUCTS
 Salesperson: BG

capitalcityawning.com
 614-221-5404
 Fax: 614-365-9420



RECEIVED
 17-030MSP
 APR 03 2017
 CITY OF DUBLIN
 PLANNING

FILE COPY

This file will be used to generate the graphics on your awning.
 Review this mock-up carefully before giving us your approval.

Approval: _____
 Date: _____

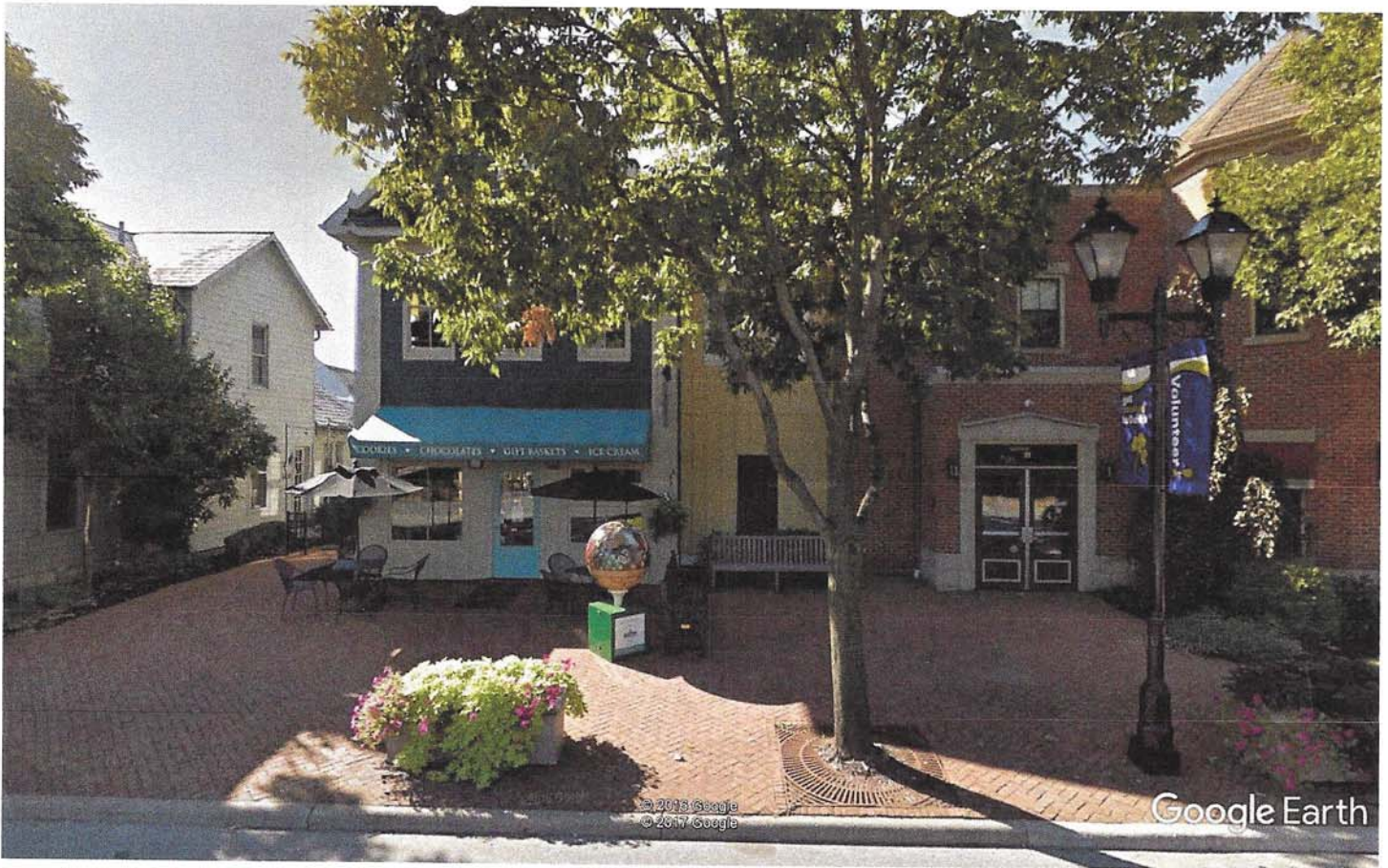
- Fabric: Black Firest
- Graphics: Cream

Job Title:
 Johnson's Real Ice Cream



capitalcityawning.com
 614-221-5404
 Fax: 614-365-9420

CANVAS PRODUCTS
 Salesperson: BG

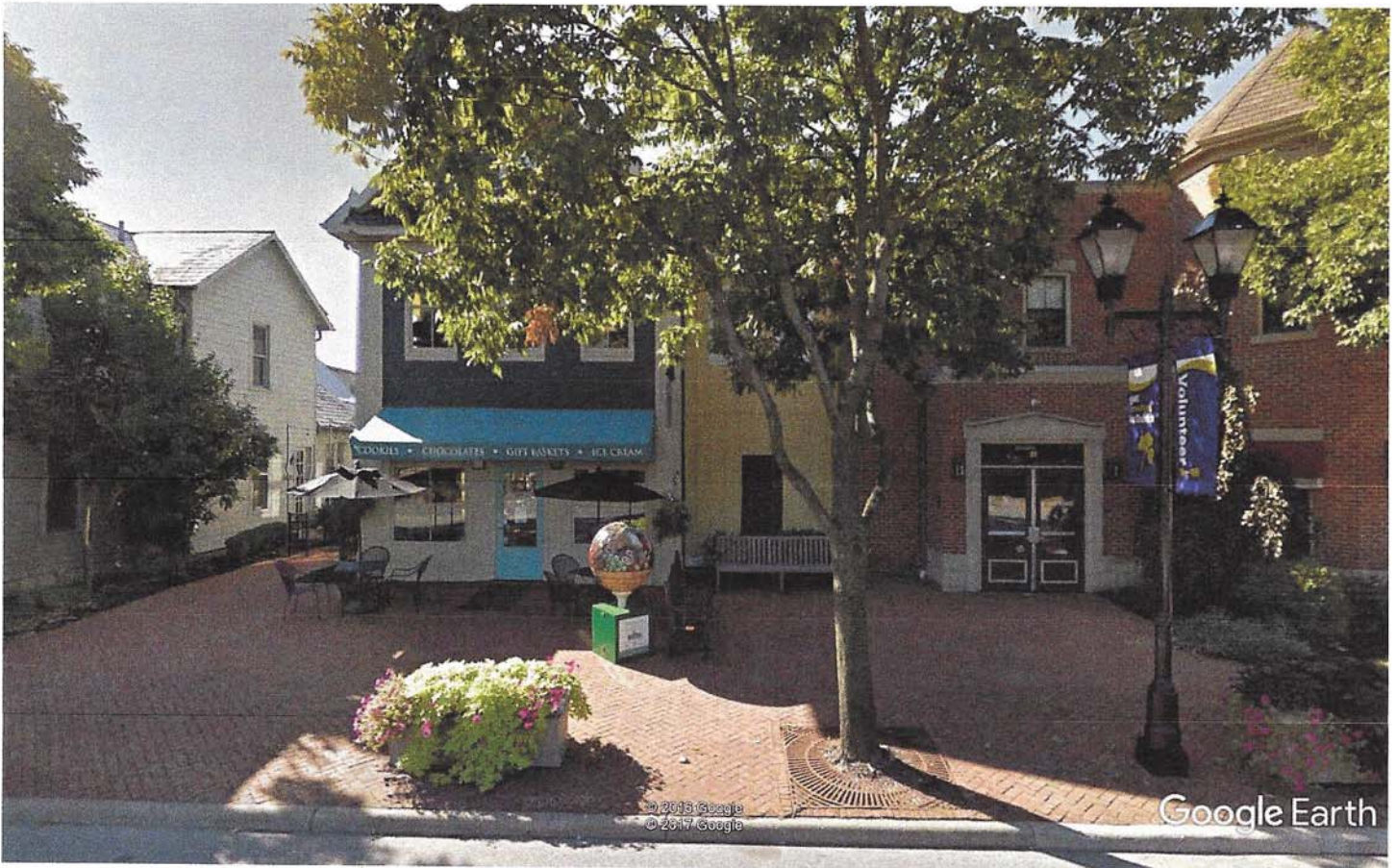


Google Earth



FILE COPY

RECEIVED
17-030MSP
APR 03 2017
CITY OF DUBLIN
PLANNING



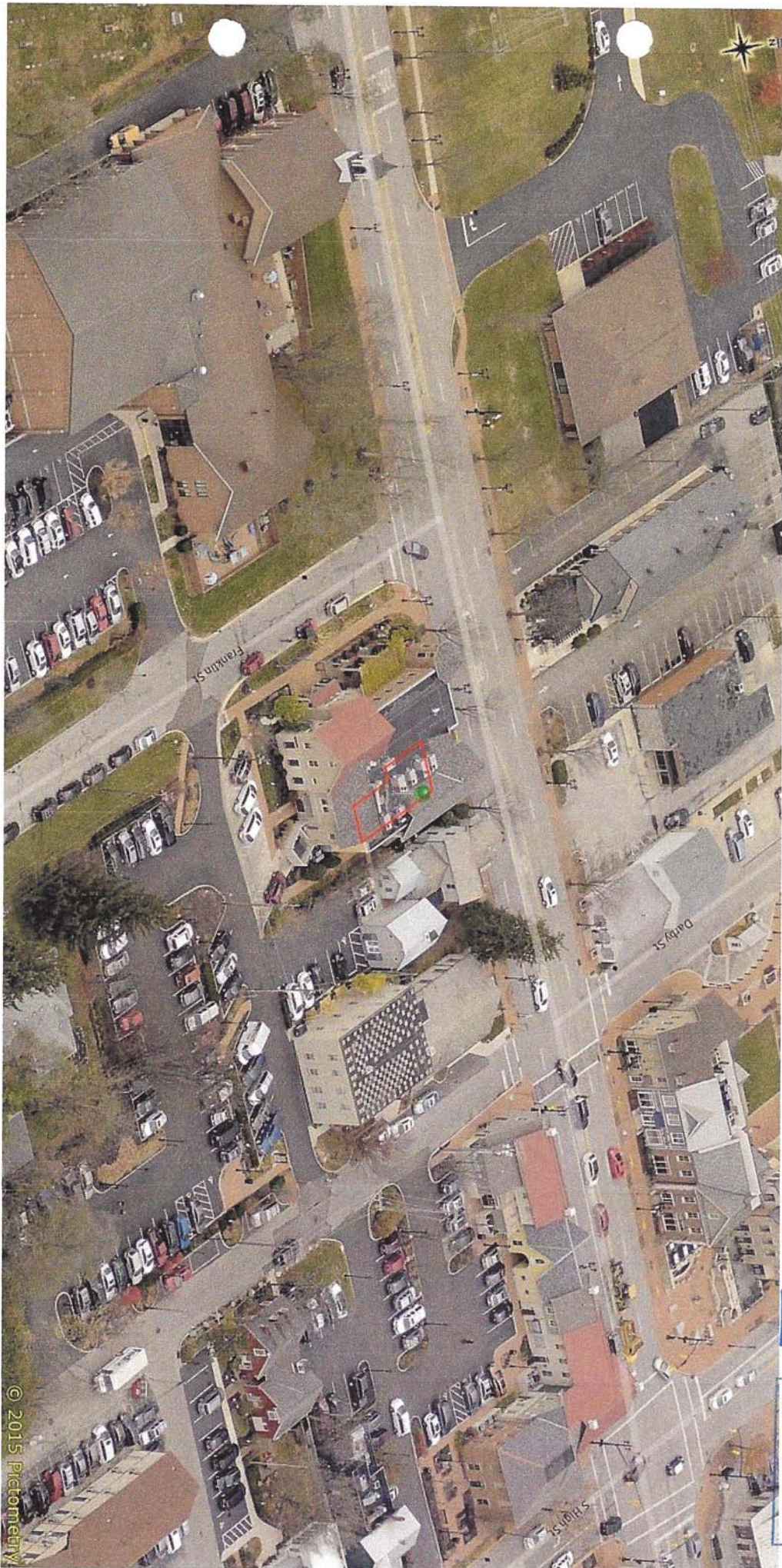
Google Earth



FILE COPY

RECEIVED
17-030 MSP
APR 03 2017
CITY OF DUBLIN
PLANNING

55 W. Bridge Street



FILE COPY

RECEIVED
17-030MSP
APR 03 2017
CITY OF DUBLIN
PLANNING

© 2015 Pictometry

